

Factors to consider in pregnancy of unknown location

Women's Health
2017, Vol. 13(2) 27–33
© The Author(s) 2017
Reprints and permissions:
sagepub.co.uk/journalsPermissions.nav
DOI: 10.1177/1745505717709677
journals.sagepub.com/home/whe



Shabnam Bobdiwala¹, Maya Al-Memar¹, Jessica Farren¹
and Tom Bourne^{1,2,3}

Abstract

The management of women with a pregnancy of unknown location (PUL) can vary significantly and often lacks a clear evidence base. Intensive follow-up is usually required for women with a final outcome of an ectopic pregnancy. This, however, only accounts for a small proportion of women with a pregnancy of unknown PUL location. There remains a clear clinical need to rationalize the follow-up of PUL so women at high risk of having a final outcome of an ectopic pregnancy are followed up more intensively and those PUL at low risk of having an ectopic pregnancy have their follow-up streamlined. This review covers the main management strategies published in the current literature and aims to give clinicians an overview of the most up-to-date evidence that they can take away into their everyday clinical practice when caring for women with a PUL.

Keywords

ectopic pregnancy, human chorionic gonadotropin, pregnancy, pregnancy of unknown location, progesterone, risk prediction models

Date received: 19 December 2016; revised: 8 April 2017; accepted: 12 April 2017

Introduction

A pregnancy of unknown location (PUL) may be defined as the clinical scenario when a woman presents with a positive urine pregnancy test but the location of the pregnancy (either intrauterine or extrauterine) cannot be located using transvaginal ultrasonography (TVS) at the initial scan. It is important to note that is a classification and not a diagnosis. Further tests and follow-up are then required before the location and/or the viability of a pregnancy can be defined.

The final outcome in a woman initially classified as a PUL is as follows:

1. Intrauterine pregnancy (IUP – this can either be viable (VIUP) or non-viable (NVIUP));
2. Failed PUL (FPUL);
3. Ectopic pregnancy (EP);
4. Persistent PUL (PPUL).

A VIUP is defined as the presence of an intrauterine gestation sac containing an embryo with a visible heartbeat. A NVIUP is defined as a pregnancy that is confirmed

as intrauterine but then subsequently miscarries (meeting national criteria for a miscarriage, which includes a crown-rump length (CRL) of ≥ 7 mm with no evidence of a foetal heartbeat or a mean gestation sac diameter of ≥ 25 mm in a gestation sac that contains no other structures^{1,2}). A FPUL is defined as a woman who has a negative pregnancy test 2 weeks after her initial follow-up.³ An EP is defined as an extrauterine mass positively visualized on TVS or confirmed via histology after a salpingectomy.⁴ The definition

¹Tommys' National Centre for Miscarriage Research, Queen Charlottes' & Chelsea Hospital, Imperial College, London, UK

²Department of Development and Regeneration, KU Leuven, Leuven, Belgium

³Department of Obstetrics and Gynaecology, University Hospitals Leuven, Campus Gasthuisberg, KU Leuven, Leuven, Belgium

Corresponding author:

Tom Bourne, Tommys' National Centre for Miscarriage Research, Queen Charlottes' & Chelsea Hospital, Imperial College, Du Cane Road, London W12 0HS, UK.

Email: t.bourne@ic.ac.uk



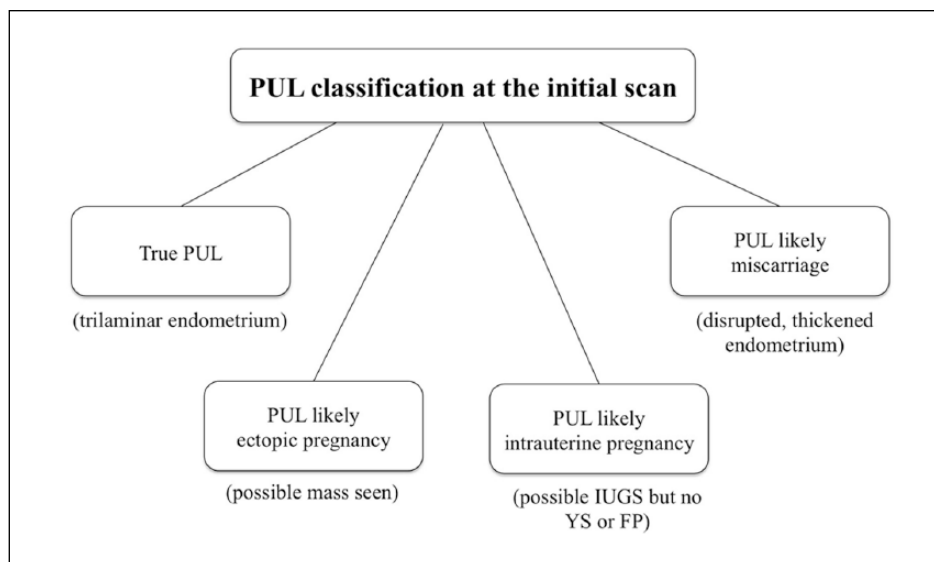


Figure 1. Schematic for PUL classification at the initial transvaginal ultrasound scan.

of a PPUL remains contentious but is commonly defined as when >3 serial serum human chorionic gonadotropin (hCG) levels change less than 15%, while the location of the pregnancy remains unclear using TVS.

Women with a PUL may undergo multiple blood tests, ultrasound scans and visits in the fear that an EP is being missed. The reality is that the majority of PUL will either have a final outcome of an IUP (17%–41%) or FPUL (47%–70%) rather than EP (8%–16%).⁵ There is, therefore, a clinical need to rationalize the management of PUL so few EP are missed while avoiding unnecessary and costly follow-up for the remaining PUL with a final outcome of FPUL or IUP. Accordingly, there has been a move towards managing PUL based on the likelihood that they will be associated with complications (in general related to EP), that is, as either ‘low risk of complications’ (i.e. a final outcome of IUP or FPUL) or ‘high risk of complications’ (i.e. a final outcome of EP or PPUL), rather than focussing on determining the location of the pregnancy.⁶ This approach to risk stratification is clinically relevant as it allows follow-up to be focussed on those deemed at high risk of complications with the follow-up of women at low risk reduced. Having a robust evidence-based system that allows management to be streamlined offers several advantages both for the woman concerned and the health-care system within which she is seen.

Many women classified as having a PUL will present with lower abdominal pain or vaginal bleeding. These symptoms, however, are not useful determinants of which PUL are at high risk of complications.^{7,8}

It is inevitable that there is a degree of heterogeneity within populations of pregnancies classified as being a PUL. The number of early pregnancies initially classified as PUL within a unit has been reported as anywhere

between 8% and 42%.⁶ A lower PUL rate is felt to correlate to higher quality ultrasonography as it relates to the ability of examiners to identify the location of a pregnancy at an initial ultrasound scan.⁶ As a general rule, a PUL rate of <15% is accepted as an indication that the quality of scanning in early pregnancy is adequate.⁹ It should be noted, however, that other factors (such as the gestational age women present at) unrelated to the scanning quality in a unit can also contribute to the PUL rate.

Defining PUL

There are two time-points when the classification of a PUL is clinically relevant:

1. At the initial scan and when reviewing both initial and subsequent 48-h serum hCG levels (to plan further management);
2. When the final outcome is defined (to determine the risk of future negative pregnancy outcomes).

An issue encountered when considering the management of PUL is variation in the way it is initially defined. Various consensus documents have been published to resolve this issue,^{9–11} but there also remains variability between these. The most widely accepted is the consensus classification system published in fertility and sterility.¹⁰

We propose two simplified classifications derived from the data above (see Figure 1).

PUL classification at the initial scan:

1. True PUL (no evidence of a pregnancy seen inside or outside the uterus);

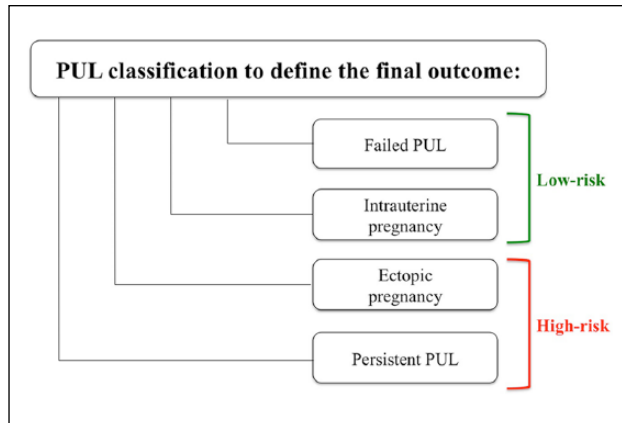


Figure 2. Schematic for PUL classification to define the final outcome.

2. PUL likely EP (possible adnexal mass seen);
3. PUL likely IUP (possible intrauterine gestation sac but no yolk sac or foetal pole seen);
4. PUL likely miscarriage (possible products of conception seen in the endometrial cavity).

Defining final outcome in PUL (see Figure 2):

1. FPUL;
2. IUP;
3. EP;
4. PPUL.

This list is in order of prevalence, with a final outcome of FPUL being most common and that of a PPUL least common.

Investigation/biomarkers

Several management protocols have been put forward to achieve reliable risk stratification in PUL. These centre on the serum biomarkers progesterone and hCG.

Serum progesterone

A meta-analysis on the accuracy of single progesterone levels for predicting pregnancy outcome in PUL found it is a good predictor of pregnancy viability but not pregnancy location.¹² It has been shown that serum progesterone levels of ≤ 10 nmol/L are associated with a failing PUL^{13,14} and that this can be used as criterion to select women for reduced follow-up. The cut-off value used is a trade off, as selecting a threshold of 10 nmol/L is associated with more EP being misclassified into the low risk group. On the other hand, lowering the threshold exacerbates the main drawback of using progesterone by classifying almost all VIUP as high risk.¹⁵

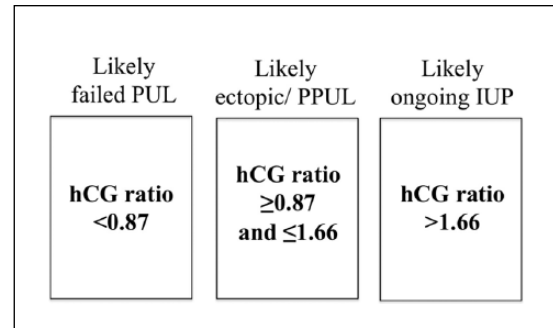


Figure 3. hCG ratio cut-off values and the likely final outcomes with a PUL.

hCG: human chorionic gonadotropin; PUL: pregnancy of unknown location; IUP: intrauterine pregnancy.

Serum hCG

Serum hCG is the most common commercially available biomarker used to manage women with a PUL. Single measurements of serum hCG are generally not helpful. Furthermore, a 'discriminatory zone' (i.e. a single hCG cut-off of 1000 or 1500 IU/L above which an IUP should be visualized) should not be used to decide when to perform a TVS as the majority of EP will be visualized at hCG levels under 1000 IU/L.¹⁶ It is particularly important that the discriminatory zone is not used to make a presumptive diagnosis of EP. The assumption that a VIUP is incompatible with findings of a PUL and an hCG of 1000 or 1500 IU/L is dangerous and should never form the basis for a decision for intervention with methotrexate as it could lead to the inadvertent termination of a wanted IUP.¹⁶ National guidelines in the United Kingdom¹ support this, stating that single hCG values are not useful but trends in hCG levels help predict the final outcome in a PUL. This finding is also supported by a meta-analysis¹⁷ which showed that an absolute single serum hCG level has no diagnostic value. Various approaches to the interpretation of hCG trends are in current clinical use.

hCG ratio

The hCG ratio is defined as the 48-h hCG level divided by the initial (0-h) hCG. A ratio of < 0.87 (consistent with a drop in hCG levels of $\geq 13\%$ over 48 h) is considered consistent with a final outcome of FPUL.¹⁸ A ratio of > 1.66 is likely to result in a final outcome of IUP¹⁹ and a ratio in between those two values is more indicative of an EP/PPUL (see Figure 3).^{7,20}

Mathematical prediction models

Mathematical models developed as decision support tools help determine the likely location and therefore risk of complications in women classified as a PUL.⁷ The M4 model²¹ is a logistic regression model based on the initial serum hCG and the hCG ratio as variables. It was found to

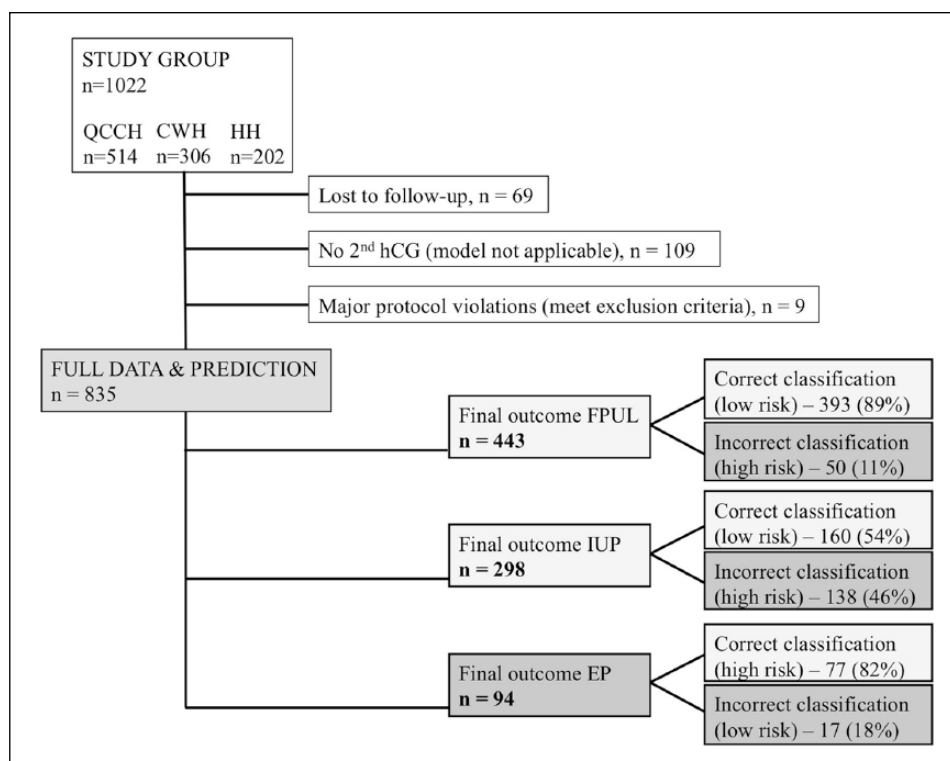


Figure 4. Flowchart of final outcome data and correct versus incorrect risk stratification by the M4 model.

Source: Taken from Bobdiwala et al.²²

hCG: human chorionic gonadotropin; FPUL: failed pregnancy of unknown location; IUP: intrauterine pregnancy; EP: ectopic pregnancy.

be able to classify 69.6% PUL as at low risk of complications with a negative predictive value (NPV) of 97.5% (i.e. the model was correct in its low risk classification 97.5% of the time).⁵ It had a sensitivity of 88.0%, that is, it correctly classified 88.0% of PUL with a final outcome of EP/PPUL as at high risk of complications. This model was found to be superior in performance to a single progesterone cut-off of <10 nmol/L or the hCG ratio alone.¹⁵

The M4 model has been validated clinically as part of a multi-centre cohort study²² where 835 women classified as a PUL were managed according to the M4 model. It predicted 70% (585/835) PUL as low risk, of which 568 (97%) were confirmed as an FPUL or IUP (see Figure 4). Of the 17 EP/PPUL misclassified as low risk by the model, none came to any significant harm (i.e. none of the missed EP had ruptured either on TVS (on the basis of visualizing blood in the pelvis) or at the time of surgery, required a blood transfusion, had a prolonged hospital stay or suffered any other additional impairment). The low number of adverse events demonstrates that expectant management of PUL using the M4 prediction model is effective and safe.

Further work following on from this has led to the development of a two-step protocol with a new prediction model (M6).²³ This utilizes both serum hCG and progesterone levels in the expectation that when used in combination, they may improve the risk stratification of PUL. The first step selects low risk PUL at presentation if the

serum progesterone is ≤ 2 nmol/L. These women have no further serum hCG levels or ultrasound scans, but a follow-up urine pregnancy test in 2 weeks to confirm a negative result. In this study, this cut-off threshold applied to 16% of PUL. The remaining PUL have a 48-h serum hCG level taken and are triaged using the M6 model (see Figure 5). This logistic regression model is based on the hCG ratio and the initial serum hCG and progesterone levels. There is also a second version of the M6 model that does not use the initial serum progesterone as a variable for women who are on progesterone supplementation.

The M4 model required a minimum of two visits for all women. The aim of the two-step protocol was to utilize the initial serum progesterone level to allow discharge of some PUL after just one visit. Furthermore, the M4 model had been developed on a relatively small number of PUL, so to improve accuracy and reliability, the M6 model was developed on a much larger cohort of 2753 cases of PUL. Overall, the two-step protocol classified 62.1% of PUL as low risk, with an NPV of 98.6% and sensitivity for correctly classifying EP as high risk of 92.0% (see Table 1).

There is a prospective multi-centre cohort study across eight sites in the United Kingdom currently underway to assess the utility of this two-step protocol in everyday clinical practice. In all, 3000 PUL have already been recruited. The M6 model is available for clinical use at no

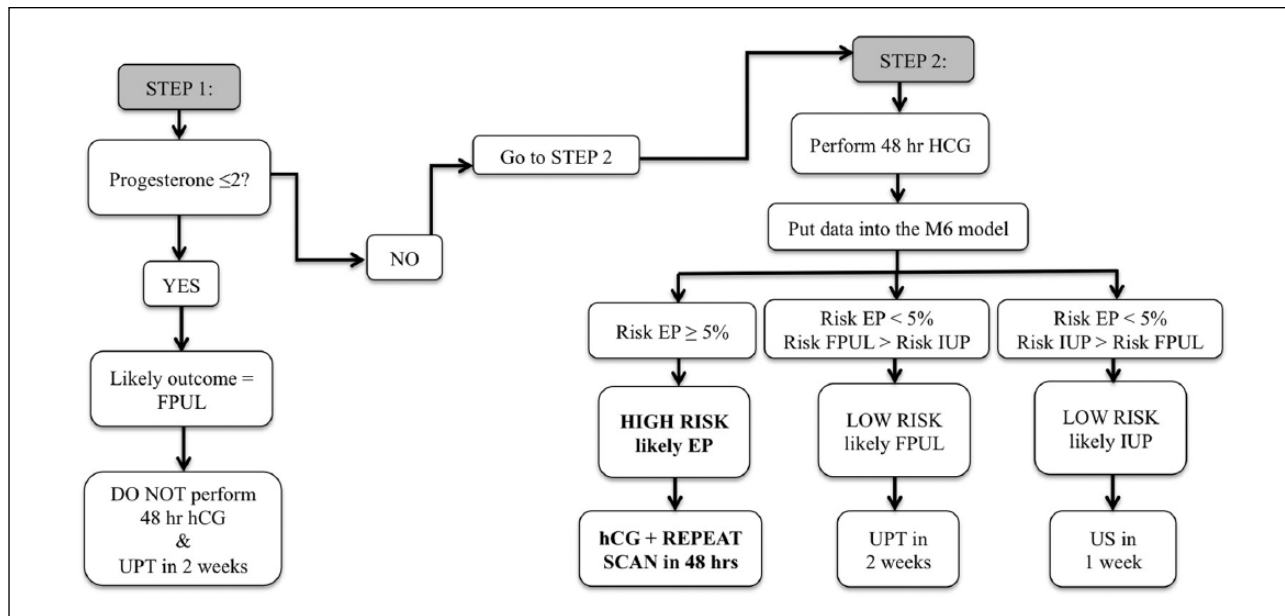


Figure 5. Flow diagram of the two-step approach for managing PUL.

Source: Taken from Van Calster et al.²³

hCG: human chorionic gonadotropin; UPT: urine pregnancy test; PUL: pregnancy of unknown location.

Table 1. Performance of PUL classification approaches.

Data classification approach	PUL classified as low risk	Negative predictive value	Sensitivity for EP	False-positive rate
<i>Validation data</i>				
Step 1 only: Progesterone cut-off	210/1304, 16.1% (14.2–18.2)	206/210, 98.1% (95.0–99.3)	134/138, 97.1% (92.4–98.9)	960/1166, 82.3% (80.0–84.5)
Two-step protocol: Step 1 + M6 _p model	810/1304, 62.1% (58.8–65.3)	799/810, 98.6% (97.5–99.3)	127/138, 92.0% (85.9–95.6)	367/1166, 31.5% (28.1–35.0)
Two-step protocol: Step 1 + M6 _{NP} model	754/1304, 57.7% (53.2–62.1)	740/754, 98.1% (96.8–98.9)	124/138, 89.6% (83.0–93.9)	426/1166, 36.6% (32.0–41.5)
M6 _p model in isolation	789/1304, 60.5% (57.1–63.8)	782/789, 99.1% (98.1–99.6)	131/138, 94.9% (89.4–97.6)	384/1166, 32.9% (29.5–36.5)
M6 _{NP} model in isolation	716/1304, 54.5% (49.8–59.2)	706/716, 98.6% (97.3–99.2)	128/138, 92.5% (86.4–96.1)	460/1166, 39.9% (35.0–45.1)
M4-based triage	921/1304, 70.6% (68.0–73.1)	895/921, 97.2% (95.9–98.1)	112/138, 81.4% (73.9–87.2)	271/1166, 23.2% (20.8–25.8)
Single-visit prog ≤ 10 nmol/L	572/1304, 43.8% (41.1–46.6)	542/572, 94.7% (92.5–96.3)	108/138, 78.1% (70.3–84.3)	625/1166, 53.6% (50.7–56.5)

Source: Taken from Van Calster et al.²³

EP: ectopic pregnancy; PUL: pregnancy of unknown location; prog: progesterone.

Confidence intervals are given between parentheses.

charge via this link: www.earlypregnancy.com/m6. It can also be downloaded as an app for smartphones (search ‘early pregnancy Leuven’).

Novel biomarkers

Biomarker discovery with PUL is focussed on five key areas (*adapted from* Cartwright et al.²⁴). This includes biomarkers associated with abnormalities in the:

- Fallopian tube (e.g. creatine kinase (CK) and vascular endothelial growth factor (VEGF));
- Uterus (e.g. activin B and leukaemia inhibitory factor (LIF));
- Embryo/trophoblast (e.g. hCG, pregnancy-associated plasma protein (PAPP-A), α -fetoprotein (AFP), activin A and cell-free foetal DNA);
- Corpus luteum (e.g. progesterone, oestradiol, relaxin and inhibin A);

- Inflammation/peritoneal irritation (cancer antigen 25 (CA125), interleukin 6 (IL-6), IL-8 and tumour necrosis factor (TNF- α)).

While serum hCG and progesterone remain the only biomarkers in current clinical use for the management of PUL, there is a limit to their accuracy in risk stratification. This has led to the search for numerous novel biomarkers that may be useful either in conjunction with, or as a replacement for, hCG and progesterone.

Studies in this field have concluded that it is unlikely that there will be a single biomarker capable of determining which PUL are at high risk of complications. Future work in this field is now focussing on developing multiplexed serum biomarker tests^{25,26} that can then potentially be incorporated into logistic regression models.

Management

As long as the patient is haemodynamically stable, PUL should be managed expectantly until the final outcome is determined. Women should be given clear written information advising them that until the location of the pregnancy is known, there is a risk of EP with its associated complications. Those with a final outcome of an IUP or FPUL will rarely need any intervention.

What is the best treatment option if the final outcome is a PPUL?

The classification of PPUL assumes that a final outcome of a VIUP has definitively been ruled out. Similar to EP, PPUL can be managed either expectantly, medically (Methotrexate) or surgically (laparoscopy/uterine curettage). There is no consensus on which of these management options is best. There is currently a randomized controlled trial (RCT) underway to address this question where women with a PPUL are randomized to one of three arms: expectant management, treatment with Methotrexate or uterine curettage. Women undergoing uterine curettage are given Methotrexate if their hCG levels do not sufficiently decline after the procedure.²⁷

Conclusion

More sophisticated interpretation of serum hCG and progesterone levels have allowed us to improve the care we offer to women with a PUL. EP still accounts for the highest rate of maternal deaths related to early pregnancy.²⁸ Accordingly, the correct classification of PUL as at low or high risk of complications is clinically important. Single progesterone levels, the hCG ratio and risk prediction models are currently used to risk stratify PUL. Risk prediction models have been shown to be superior to other management strategies.¹⁵ The M6 model is available for

clinical use and is based on one of the largest cohorts of PUL reported to date. It is an evidence-based tool to rationalize and improve triage in this cohort of women.

Declaration of conflicting interests

The author(s) declared no potential conflicts of interest with respect to the research, authorship and/or publication of this article.

Funding

The author(s) disclosed receipt of the following financial support for the research, authorship, and/or publication of this article: T.B. is supported by the NIHR Biomedical Research Center based at Imperial College Healthcare NHS Trust and Imperial College London. S.B. is supported by NIHR CLAHRC NWL (Collaboration for Leadership in Applied Health Research & Care, Northwest London). The views expressed are those of the author(s) and not necessarily those of the NHS, the NIHR or the Department of Health. M.A.-M. is supported by Tommys' National Centre for Miscarriage Research.

References

1. NICE guidelines [CG154]. Ectopic pregnancy and miscarriage: diagnosis and initial management in early pregnancy of ectopic pregnancy and miscarriage. 2012, <https://www.ncbi.nlm.nih.gov/pubmed/23638497>
2. Abdallah Y, Daemen A, Kirk E, et al. Limitations of current definitions of miscarriage using mean gestational sac diameter and crown-rump length measurements: a multicenter observational study. *Ultrasound Obstet Gynecol* 2011; 38(5): 497–502.
3. Condous G, Okaro E and Bourne T. The conservative management of early pregnancy complications: a review of the literature. *Ultrasound Obstet Gynecol* 2003; 22: 420–430.
4. Condous G, Okaro E, Khalid A, et al. The accuracy of transvaginal ultrasonography for the diagnosis of ectopic pregnancy prior to surgery. *Hum Reprod* 2005; 20: 1404–1409.
5. Van Calster B, Abdallah Y, Guha S, et al. Rationalizing the management of pregnancies of unknown location: temporal and external validation of a risk prediction model on 1962 pregnancies. *Hum Reprod* 2013; 28(3): 609–616.
6. Kirk E, Bottomley C and Bourne T. Diagnosing ectopic pregnancy and current concepts in the management of pregnancy of unknown location. *Hum Reprod Update* 2014; 20: 250–261.
7. Condous G, Van Calster B, Kirk E, et al. Prospective cross-validation of three methods of predicting failing pregnancies of unknown location. *Hum Reprod* 2007; 22(4): 1156–1160.
8. Ayim F, Tapp S, Guha S, et al. Do risk factors, clinical history and symptoms predict the risk of ectopic pregnancy in women attending an early pregnancy assessment unit? *Ultrasound Obstet Gynecol* 2016; 48(5): 656–662.
9. Condous G, Timmerman D, Goldstein S, et al. Pregnancies of unknown location: consensus statement. *Ultrasound Obstet Gynecol* 2006; 28: 121–122.
10. Barnhart KT, van Mello NM, Bourne T, et al. Pregnancy of unknown location: a consensus statement of nomenclature, definitions and outcome. *Fertil Steril* 2011; 95: 857–866.

11. Kolte AM, Bernardi LA, Christiansen OB, et al. ESHRE Special Interest Group, Early Pregnancy. Terminology for pregnancy loss prior to viability: a consensus statement from the ESHRE early pregnancy special interest group. *Hum Reprod* 2015; 30(3): 495–498.
12. Verhaegen J, Gallos ID, van Mello NM, et al. Accuracy of single progesterone test to predict early pregnancy outcome in women with pain or bleeding: meta-analysis of cohort studies. *BMJ* 2012; 27: 345.
13. Day A, Sawyer E, Mavrelou D, et al. Use of serum progesterone measurements to reduce need for follow-up in women with pregnancies of unknown location. *Ultrasound Obstet Gynecol* 2009; 33: 704–710.
14. Cordina M, Schramm-Gajraj K, Ross JA, et al. Introduction of a single visit protocol in the management of selected patients with pregnancy of unknown location: a prospective study. *BJOG* 2011; 118: 693–697.
15. Guha S, Ayim F, Ludlow J, et al. Triaging pregnancies of unknown location: the performance of protocols based on single serum progesterone or repeated serum hCG levels. *Hum Reprod* 2014; 29: 938–945.
16. Condous G, Kirk E, Lu C, et al. Diagnostic accuracy of varying discriminatory zones for the prediction of ectopic pregnancy in women with a pregnancy of unknown location. *Ultrasound Obstet Gynecol* 2005; 26(7): 770–775.
17. Van Mello N, Mol F, Opmeer BC, et al. Diagnostic value of serum hCG on the outcome of pregnancy of unknown location: a systematic review and meta-analysis. *Hum Reprod Update* 2012; 18: 603–617.
18. Condous G, Kirk E, Van Calster B, et al. Failing pregnancies of unknown location: a prospective evaluation of the human chorionic gonadotrophin ratio. *BJOG* 2006; 113: 521–527.
19. Condous G, Okaro E and Bourne T. Pregnancies of unknown location: diagnostic dilemmas and management. *Curr Opin Obstet Gynecol* 2005; 17(6): 568–573.
20. Kirk E, Condous G, Van Calster B, et al. Rationalizing the follow-up of pregnancies of unknown location. *Hum Reprod* 2007; 22(6): 1744–1750.
21. Condous G, Van Calster B, Kirk E, et al. Prediction of ectopic pregnancy in women with a pregnancy of unknown location. *Ultrasound Obstet Gynecol* 2007; 29: 680–687.
22. Bobdiwala S, Guha S, Van Calster B, et al. The clinical performance of the M4 decision support model to triage women with a pregnancy of unknown location as at low or high risk of complications. *Hum Reprod* 2016; 31(7): 1425–1435.
23. Van Calster B, Bobdiwala S, Guha S, et al. Managing pregnancy of unknown location based on initial serum progesterone and serial serum hCG: development and validation of a two-step triage protocol. *Ultrasound Obstet Gynecol* 2016; 48(5): 642–649.
24. Cartwright J, Duncan WC, Critchley HO, et al. Serum biomarkers of tubal ectopic pregnancy: current candidates and future possibilities. *Reproduction* 2009; 138: 9–22.
25. Barnhart K and Speicher DW. Molecular diagnosis of ectopic pregnancy. *Expert Rev Mol Diagn* 2011; 11: 759–762.
26. Senapati S and Barnhart K. Biomarkers of ectopic pregnancy and pregnancy of unknown location. *Fertil Steril* 2013; 99: 1107–1116.
27. *RCT for women with a persisting pregnancy of unknown location*. University of Pennsylvania, <https://clinicaltrials.gov/ct2/show/NCT01800162>
28. Saving mothers' lives: reviewing maternal deaths to make motherhood safer. CEMACH report, 2007, <http://www.publichealth.hscni.net/sites/default/files/Saving%20Mothers'%20Lives'%202003-05%20.pdf>