

RESEARCH ARTICLE

Maternal undernutrition aggravates renal tubular necrosis and interstitial fibrosis after unilateral ureteral obstruction in male rat offspring

Midori Awazu^{1*}, Tokiya Abe², Akinori Hashiguchi², Mariko Hida¹

1 Department of Pediatrics, Keio University School of Medicine, Tokyo, Japan, **2** Department of Pathology, Keio University School of Medicine, Tokyo, Japan

* awazu@keio.jp

Abstract

Maternal undernutrition is known to reduce glomerular number but it may also affect tubulointerstitium, capillary density, and response to oxidative stress. To investigate whether the latter elements are affected, we examined the response to unilateral ureteral obstruction (UUO), an established model of renal tubulointerstitial fibrosis, in the kidney of offspring from control and nutrient restricted rats. Six-week old male offspring from rats given food ad libitum (CON) and those subjected to 50% food restriction throughout pregnancy (NR) were subjected to UUO for 7 days. Body weight was significantly lower in NR. Systolic blood pressure and blood urea nitrogen increased similarly in CON and NR after UUO. Tubular necrosis in the obstructed kidney, on the other hand, was more extensive in NR. Also, the collagen area, a marker of fibrosis, of the obstructed kidney was significantly increased compared with the contralateral kidney only in NR. Capillary density was decreased similarly in the obstructed kidney of CON and NR compared with the contralateral kidney. Urine nitrate/nitrite, a marker of nitric oxide production, from the obstructed kidney was significantly increased in NR compared with CON. Nitrotyrosine, a marker of nitric oxide-mediated free radical injury, was increased in the obstructed kidney compared with the contralateral kidney in both CON and NR, but the extent was significantly greater in NR.

In conclusion, more severe tubular necrosis and fibrosis after UUO was observed in NR, which was thought to be due to increased nitrosative stress.

OPEN ACCESS

Citation: Awazu M, Abe T, Hashiguchi A, Hida M (2019) Maternal undernutrition aggravates renal tubular necrosis and interstitial fibrosis after unilateral ureteral obstruction in male rat offspring. *PLoS ONE* 14(9): e0221686. <https://doi.org/10.1371/journal.pone.0221686>

Editor: Michael Bader, Max Delbrück Centrum für Molekulare Medizin Berlin Buch, GERMANY

Received: July 2, 2019

Accepted: August 13, 2019

Published: September 3, 2019

Copyright: © 2019 Awazu et al. This is an open access article distributed under the terms of the [Creative Commons Attribution License](https://creativecommons.org/licenses/by/4.0/), which permits unrestricted use, distribution, and reproduction in any medium, provided the original author and source are credited.

Data Availability Statement: All relevant data are within the manuscript.

Funding: This work was supported by MA, JSPS KAKENHI grant Number JP17K10152.

Competing interests: The authors have declared that no competing interests exist.

Introduction

The concept of developmental origins of health and disease, also referred to as programming, is important in the pathogenesis of kidney diseases [1]. Low birth weight is associated with a risk for renal diseases as well as hypertension, and reduced glomerular number is linked to these associations epidemiologically as well as experimentally [1]. Disturbed intrauterine environment, however, may also affect tubules, interstitium, capillary density, and oxidative stress

[2, 3]. The expression of tubular transporters has been shown to be altered by maternal low protein diet [4]. Subjects with extremely low birth weight were reported to have various tubular dysfunctions [2]. Not much attention has been paid to the effect of an adverse intrauterine environment on the interstitium, despite the fact that interstitial fibrosis is an important factor in the progression of kidney disease. Vehaskari et al. [5] reported that the offspring of rats fed a low protein diet showed normal renal histology at 8 weeks of age. At 18 months, however, low protein group showed more pronounced tubular atrophy/dilation and interstitial fibrosis along with more severe glomerulosclerosis compared with controls. Others reported, on the other hand, that renal histology including glomerulosclerosis and interstitial fibrosis was not different at 32 and 100 weeks between female offspring of protein-restricted rats and controls, although renal function was deteriorated in the former at 100 weeks [6]. While aging may or may not reveal the effect of an adverse intrauterine environment, the insult may become apparent by a more severe secondary injury. In support of this possibility, a previous study demonstrated that renal tubular injury score was similar to controls at baseline in rats with intrauterine growth restriction (IUGR) induced by reduced uterine perfusion [7]. After ischemia-reperfusion, however, histological tubular injury was significantly more severe in IUGR rats. Tubulointerstitial fibrosis after injection of anti-Thy-1 antibody was also reported to be increased in IUGR rats induced by uterine artery ligation [8]. In these IUGR rats, however, glomeruli were more sclerosed compared with controls, which may explain the more pronounced fibrosis *via* decreased peritubular capillary blood flow. In humans, low birth weight was suggested to be a risk factor for the development of renal scarring after urinary tract infection [9]. This suggests that an adverse intrauterine environment affects the development of tubulointerstitial injury directly. Experimental studies that examined the primary injury to the interstitium in IUGR animals are lacking.

In the present study, therefore, we examined the response to unilateral ureteral obstruction (UUO), an established model of renal tubulointerstitial fibrosis, in the male offspring from control and nutrient restricted rat dams.

Materials and methods

Experimental animals

Approval was obtained from the Animal Experiment Committee of Keio University. Female Sprague Dawley rats at day 1 of pregnancy were purchased from Sankyo Labo Service corporation, Inc. (Tokyo, Japan). Animal experiments were performed at the laboratory of department of Pediatrics, Keio University School of Medicine. The male offspring of dams given food *ad libitum* ($n = 8$ litters, 1 offspring/litter) and those subjected to 50% food restriction throughout pregnancy ($n = 7$ litters, 1 offspring/litter) were examined. Sample size was determined according to the review for DOHaD research [10] and our previous study [11]. We previously showed that maternal nutrient restriction suppressed ureteric branching during the fetal period and induced low glomerular number in adult kidneys. Male rats were examined because the effect of programming is stronger in males than females in general [12]. Also most of our current knowledge of UUO has been obtained from studies using male rats. At 6 weeks of age, rats were anesthetized with an intraperitoneal injection of sodium pentobarbital and blood pressure was measured by a tail cuff method using BP-98A (Softron, Japan). Briefly, rats were kept at 36°C and blood pressure measurements were made for at least 5 times within a few minutes. High initial values and or the maximum and the minimum values were discarded and the remaining values were averaged. Blood was collected from the tail vein. They then underwent left unilateral ureteral ligation through an abdominal midline incision [13]. After 7 days, rats were anesthetized and blood pressure was measured in the same way. Blood were collected

from the tail vein and after abdominal incision, urine was obtained from the obstructed kidney by pelvic puncture. Kidneys were then removed and fixed in 4% paraformaldehyde for histological examination or lysed for immunoblot analysis. Although comparison between obstructed and sham-operated kidney is ideal, we used contralateral kidney as a control because a previous study reported no difference between sham-operated kidney and contralateral kidney regarding apoptosis and fibrosis [14].

Reagents

The following primary antibodies were used: CD31 (clone TLD-3A12, BioRad, Hercules, CA), eNOS (BD Transduction Laboratories, San Diego, CA), nitrotyrosine (Calbiochem, San Diego, CA), and GAPDH (Cell Signaling Technology, Beverly, MA). Horseradish peroxidase-conjugated anti-mouse IgG and anti-rabbit IgG were from Amersham (Buckinghamshire, UK).

Histology

After fixation, kidneys were embedded in paraffin. For quantification of fibrosis, specimens were stained with elastic van Gieson (EVG). A whole slide image (WSI) of each specimen was acquired using the NanoZoomer 2.0HT (Hamamatsu Photonics K.K., Hamamatsu, Japan). The WSI pixels were classified into collagen fibers, elastic fibers, nucleus, cytoplasm, and non-tissue component as previously reported [15]. At least 30 fields of view were examined in the cortex excluding the necrotic area. For the assessment of acute tubular necrosis (ATN), sections were stained with hematoxylin and eosin.

Immunohistochemistry

Sections were deparaffinized and rehydrated. Staining was performed with a Leica Biosystems' Bond-Max (Leica Biosystems, Melbourne, Australia). Epitope retrieval was performed by incubating the slides in Bond Epitope Retrieval Solution 1 (Leica Microsystems) at 100°C for 20 min. The dilution of anti-CD31 antibody was 1:20000. Sections were photographed at a magnification of x200 and CD31-positive area was measured using ImageJ software (National Institute of Health, Bethesda, MD).

Immunoblot analysis

Kidneys were lysed in solubilization buffer containing 20 mM HEPES (pH 7.2), 1% Triton X-100, 10% glycerol, 20 mM sodium fluoride, 1 mM sodium orthovanadate, 1 mM PMSF, 10 µg/mL aprotinin, and 10 µg/mL leupeptin. Insoluble material was removed by centrifugation (10,500 g, 10 min). Lysates were resolved by SDS-PAGE and transferred to PVDF membranes (Immobilon, Millipore, Bedford, MA). Nonspecific binding sites were blocked in TBS buffer (10 mM Tris•HCl, pH 7.4, 0.15 M NaCl) containing 0.1% Tween 20 and 5% BSA overnight at 4°C or for 1 h at 25°C. Antibodies were added to TBS containing 0.1% Tween 20 with 5% BSA and incubated with mixing for 24 h at 4°C. After incubating with secondary antibody, bound antibodies were detected using the ECL Western blotting system (Amersham, Arlington Heights, IL) and visualized using Chemi Doc system (Bio-Rad Laboratories, Hercules, CA). All experiments were repeated at least three times on separate samples.

Urine nitrate/nitrite (NOx)

Urine was stored at -80°C until the time of assay. Urine NOx, metabolites of nitric oxide (NO), was measured using Nitric Oxide (total), detection kit (Enzo Life Sciences, Farmingdale, NY). Briefly, 50 µl of samples and standards were placed into duplicate wells, followed by addition

of 25 μ l of NADH and 25 μ l of nitrate reductase. The plate was then incubated for 30 min at 37°C. Then 50 μ l of the Griess reagent I and II were placed into each well. The optical density of each well was read at 540 nm after blanking against the blank wells.

Serum and urine chemistry measurements

Blood urea nitrogen was measured using Fuji Dry Chem NX500V (Fujifilm, Tokyo, Japan). Urine chemistry measurements were made at SRL Inc (Tokyo, Japan). Urine osmolality, protein, sodium, N-acetyl- β -D-glucosaminidase, magnesium, and creatinine were measured by freezing point depression method, pyrogallol red method, electrode method, colorimetric method, xylydyl blue method, and enzymatic method, respectively. Fractional excretion of magnesium was reported to correlate with tubulointerstitial fibrosis in human nephrotic syndrome [16]. Since fractional excretion values are influenced by glomerular filtration rate, we used urine magnesium corrected by creatinine.

Statistical analysis

The results are expressed as means \pm SE. After checking normal distribution of the data, statistical analysis was performed with paired *t* test, unpaired *t* test, ANOVA followed by Tukey's test as appropriate using JMP software (SAS institute Inc., NC). Statistical significance was determined as *P* < 0.05.

Results

Body weight, blood pressure, and blood urea nitrogen

Body weight of offspring from dams subjected to 50% food restriction throughout pregnancy (NR) was significantly lower than that of offspring from dams given food ad libitum (CON) (Table 1). Systolic pressure increased significantly after UUU in both CON and NR, which may be due to the growth rather than the effect of UUU. Thus body weight increased significantly in both groups. Since body weight, and presumably muscle mass, was different between CON and NR, blood urea nitrogen (BUN) was used to assess renal function instead of serum creatinine. BUN increased significantly after UUU in both CON and NR. There was no difference between CON and NR either before or after UUU except for body weight.

Table 1. Body weight, blood pressure, and blood urea nitrogen.

		CON	NR	P
Number of litters		8	7	
Body weight (g)	before UUU	171 \pm 6	134 \pm 8	0.0026
	after UUU	203 \pm 7*	161 \pm 9*	0.0021
Blood pressure				
Systolic (mmHg)	before UUU	92 \pm 4	98 \pm 4	NS
	after UUU	105 \pm 5*	112 \pm 4*	NS
Diastolic (mmHg)	before UUU	50 \pm 3	58 \pm 5	NS
	after UUU	61 \pm 4	67 \pm 7	NS
BUN (mg/dl)	before UUU	15.9 \pm 2.1	17.5 \pm 1.0	NS
	after UUU	22.7 \pm 2.8*	21.0 \pm 1.2*	NS

Means \pm SE. Abbreviations: CON, offspring of normally fed mothers; NR, offspring of nutrient restricted mothers; UUU, unilateral ureteral obstruction; BUN, blood urea nitrogen.

*, *P* < 0.05 vs before UUU.

<https://doi.org/10.1371/journal.pone.0221686.t001>

Urine parameters

Urine from obstructed kidneys was examined for osmolality, protein-to-creatinine ratio, sodium-to-creatinine ratio, N-acetyl- β -D-glucosaminidase-to-creatinine ratio, and magnesium-to-creatinine ratio (Table 2). There was no difference in these parameters between NR and CON.

Acute tubular necrosis

Extensive ATN was observed in 5 out of 7 obstructed kidneys of NR (Fig 1). None of 8 obstructed kidneys of CON showed extensive ATN.

Tubulointerstitial fibrosis

Kidneys were stained with EVG and interstitial fibrosis was quantified as collagen area ratio (Fig 2A). Collagen area ratio in the contralateral kidney was low and there was no significant difference between CON and NR (Fig 2B). Collagen area ratio in the obstructed kidney was significantly larger compared with the contralateral kidney only in NR.

Peritubular capillary density

We examined whether extensive ATN and interstitial fibrosis observed in NR obstructed kidneys was secondary to decreased density of peritubular capillaries, since reduced capillary density leads to renal hypoxia which characterizes UUO [17]. The area positive for the endothelial marker CD31 was significantly decreased in the obstructed kidney compared with the contralateral kidney in both CON and NR (Fig 3A). However, there was no difference between CON and NR in either obstructed or contralateral kidneys (Fig 3B).

Urine NOx

Urine NOx, a marker of NO bioavailability, was reported to increase after UUO [18]. We examined whether there was a difference in urine NOx between NR and CON. Urine NOx from the obstructed kidney was significantly increased in NR compared with CON (Table 2).

Table 2. Urine from the obstructed kidney.

	CON	NR
Urine chemistry (n of litters)	4	6
Osmolality (mOsm/kg)	309 \pm 3	341 \pm 16
Protein/Cr (g/g)	14.7 \pm 8.7	33.4 \pm 16.5
Na/Cr (mEq/g)	5.2 \pm 1.1	6.7 \pm 2.5
NAG/Cr (U/g)	420 \pm 93	367 \pm 156
Urine NOx (n of litters)	7	5
(nmol/mgCr)	727 \pm 164	2859 \pm 890*

CON, offspring of normally fed mothers; NR, offspring of nutrient restricted mothers; Means \pm SE. Abbreviations: CON, controls; NR, offspring of nutrient restricted mothers; Cr, creatinine; NAG, N-acetyl- β -D-glucosaminidase; NOx, nitrate/nitrite.

*, P<0.05 vs CON. Not all the urine parameters were measured because of insufficient amount of samples.

<https://doi.org/10.1371/journal.pone.0221686.t002>

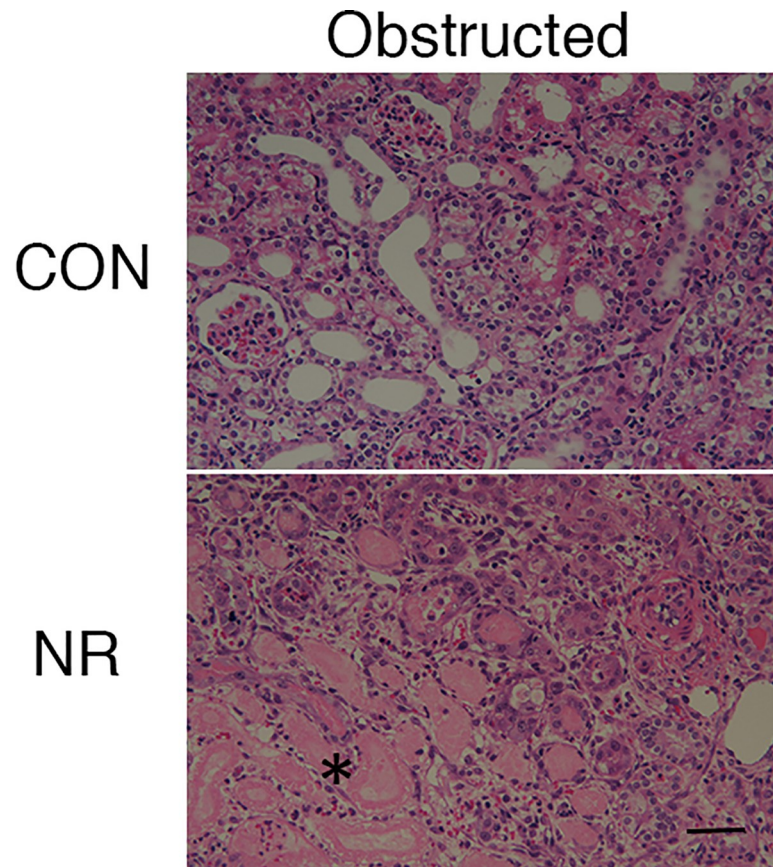


Fig 1. Acute tubular necrosis in the obstructed kidney of offspring from control and nutrient restricted mothers. Representative hematoxylin and eosin staining. CON, controls; NR, maternal nutrient restriction; *, necrosis of tubular cells, loss of brush border, and casts are observed. Scale bar, 50 μ m.

<https://doi.org/10.1371/journal.pone.0221686.g001>

Endothelial nitric oxide synthase (eNOS) expression

In association with increased NO production, increased eNOS expression has been reported in obstructed kidneys [18]. Immunoblot analysis showed that eNOS expression in the contralateral kidney was not different between CON and NR (Fig 4). The expression of eNOS was significantly greater in the obstructed kidney than the contralateral kidney in CON. In NR, however, the statistical significance was not achieved due to high variability. The eNOS level in the obstructed kidney was not different between CON and NR.

Nitrotyrosine

An adverse intrauterine environment is known to increase oxidative stress [19], which may aggravate injury due to obstruction resulting in more severe ATN and tubulointerstitial fibrosis. While low concentration NO alleviates renal injury in UUO, high concentration NO is cytotoxic generating peroxynitrate, a potent oxidant. We therefore examined the expression of nitrotyrosine, a marker of peroxynitrate, which was reported to be increased in the kidney of offspring of dams fed low protein diet [19]. As shown in Fig 5, the level of nitrotyrosine in the contralateral kidney was not different between CON and NR. Nitrotyrosine expression in the obstructed kidney was increased compared with the contralateral kidney, and the extent was significantly greater in NR compared with CON (Fig 5).

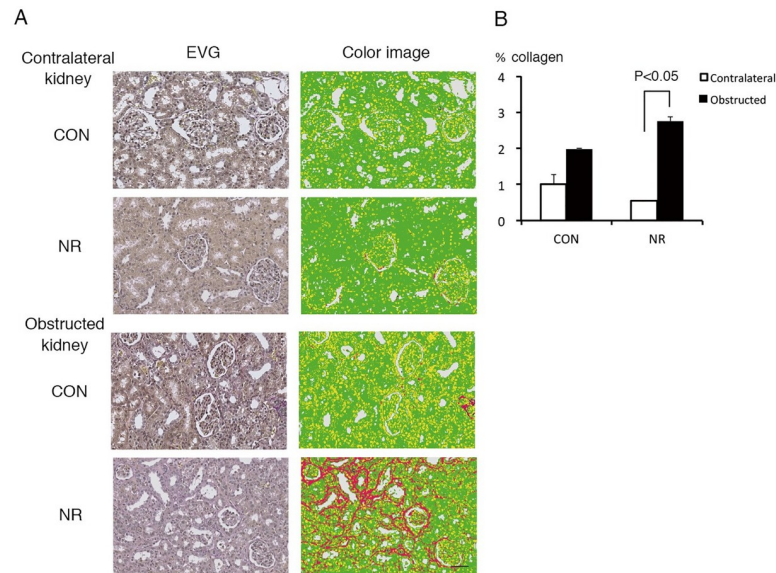


Fig 2. Tubulointerstitial fibrosis in the contralateral and obstructed kidney of offspring from control and nutrient restricted mothers. (A) Representative EVG staining and the color classification. CON, controls; NR, maternal nutrient restriction. After staining with EVG, WSI of each specimen was acquired. The WSI pixels were classified into collagen fibers, elastic fibers, nuclei, and cytoplasm were red, blue, yellow, and green, respectively. Scale bar, 50 μ m. (B) Quantitative analysis. The area ratio of collagen fibers is the sum of pixels for collagen fibers divided by the total number of pixels of the four tissue components. $n = 5$ litters each. Not all the samples were examined because the variation was small easily reaching statistical significance.

<https://doi.org/10.1371/journal.pone.0221686.g002>

Discussion

In the present study, we found that ATN and interstitial fibrosis after UUU were more severe in male offspring of nutrient-restricted rat dams. This was thought to be due to increased nitrosative stress in the obstructed kidney of NR as evidenced by increased urine NO_x and nitrotyrosine expression. Oxidative stress, including nitrosative stress, is known to contribute to the pathogenesis of obstructive uropathy leading to tubular cell death and development of interstitial fibrosis [20]. Various markers of oxidative stress including superoxide anion, hydrogen peroxide, nitrotyrosine, malondialdehyde, 8-isoprostaglandin F₂ α , and others have been reported to be increased in UUU kidneys [20, 21]. Levels of antioxidant enzymes catalase and superoxide dismutase were decreased in the UUU kidney [21]. Mice deficient in catalase were shown to have more severe renal fibrosis after UUU indicating the importance of oxidants in the pathogenesis of UUU [22]. In support of this, exogenous antioxidants such as flavastatin decreased the severity of fibrosis and reduced oxidative stress markers [23].

Maternal protein restriction is associated with age-associated increased oxidative stress and impairment of antioxidant defense capacity in rat islets [24]. In the same model, kidney oxidative stress was shown to contribute to the pathogenesis of hypertension [19]. In the study by Ojeda, the production of superoxide was increased in the kidney of IUGR rats both at baseline and after ischemia-reperfusion [7]. Moreover, tempol, a mimetic of superoxide dismutase, alleviated the tubular injury in IUGR rats. In the present study, the expression of nitrotyrosine in the obstructed kidney was greater in NR than CON. The increased urine NO_x, a NO metabolite, also suggests increased nitrosative stress. As will be discussed later, NO has opposite cytoprotective and prooxidant actions. Prooxidant action is noted with high concentrations of NO [25]. Taken together, the more severe ATN and fibrosis in the obstructed kidney of NR may be explained by the increased nitrosative stress.

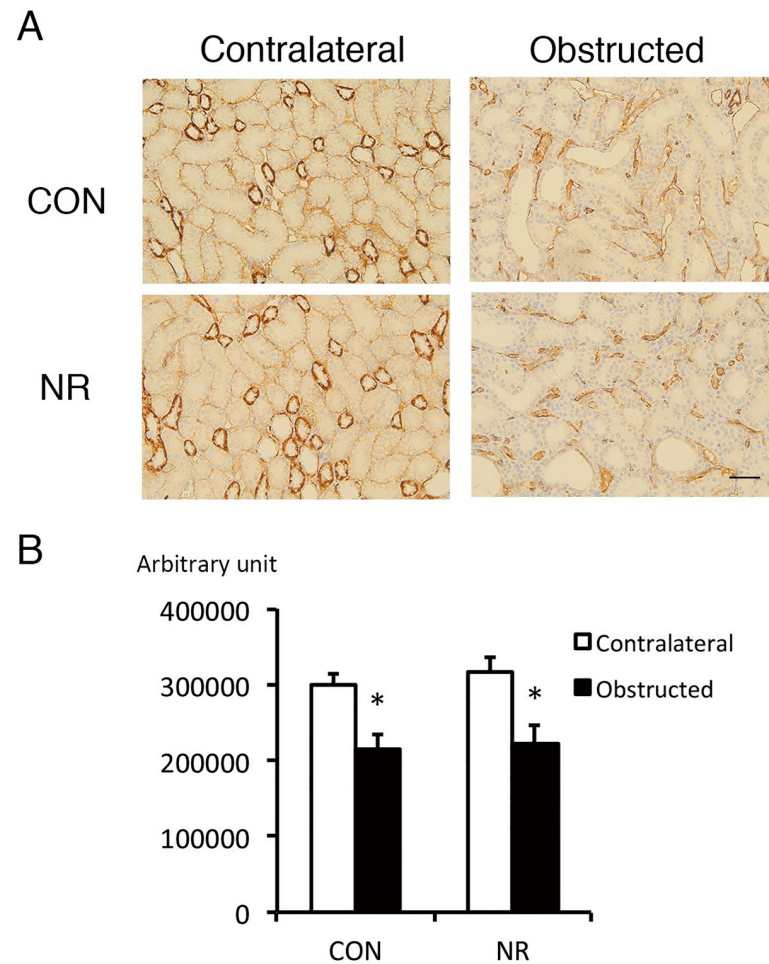


Fig 3. CD31-positive area in the contralateral and obstructed kidney of offspring from control and nutrient restricted mothers. (A) Representative CD31 staining. (B) Quantitative analysis. CON, controls; NR, maternal nutrient restriction. n = 4 litters each. CD31-positive area is expressed as arbitrary unit. *, $P < 0.05$ vs contralateral kidneys. Not all the samples were examined because the variation was small easily reaching statistical significance.

<https://doi.org/10.1371/journal.pone.0221686.g003>

The role of NO in the kidney is complex. NO production in the obstructed kidney is known to increase, which was speculated to counterbalance angiotensin II-induced vasoconstriction [18]. The increased NO was shown to be due, in part, to increased NOS protein expression [18, 26, 27]. In UUU, eNOS, expressed in the vasculature and tubules, has been reported to be increased and is considered to protect against renal injury [18]. The loss of eNOS in peritubular capillary was associated with increased tubulointerstitial fibrosis in aging rats probably through decreased vasodilation [28]. Agents that produce NO such as L-arginine and adrenomedullin ameliorated UUU-induced fibrosis, whereas L-NAME, a NOS inhibitor, aggravated it [29, 30]. Inducible NOS (iNOS) was also shown to be increased by UUU [26]. Tubular injury after UUU was more severe in mice lacking iNOS suggesting the protective role of NO in UUU [31]. While these results suggest the beneficial action of NO, detrimental effects of NO have been reported. As stated above, NO can produce nitrosative stress. A stimulatory action of NO on collagen deposition *via* iNOS overexpression [32] and even dietary L-arginine supplementation has been reported in various organs including the kidney [33]. Animal models characterized by injurious effect of NO include lupus nephritis and others [34]. Elevated NO

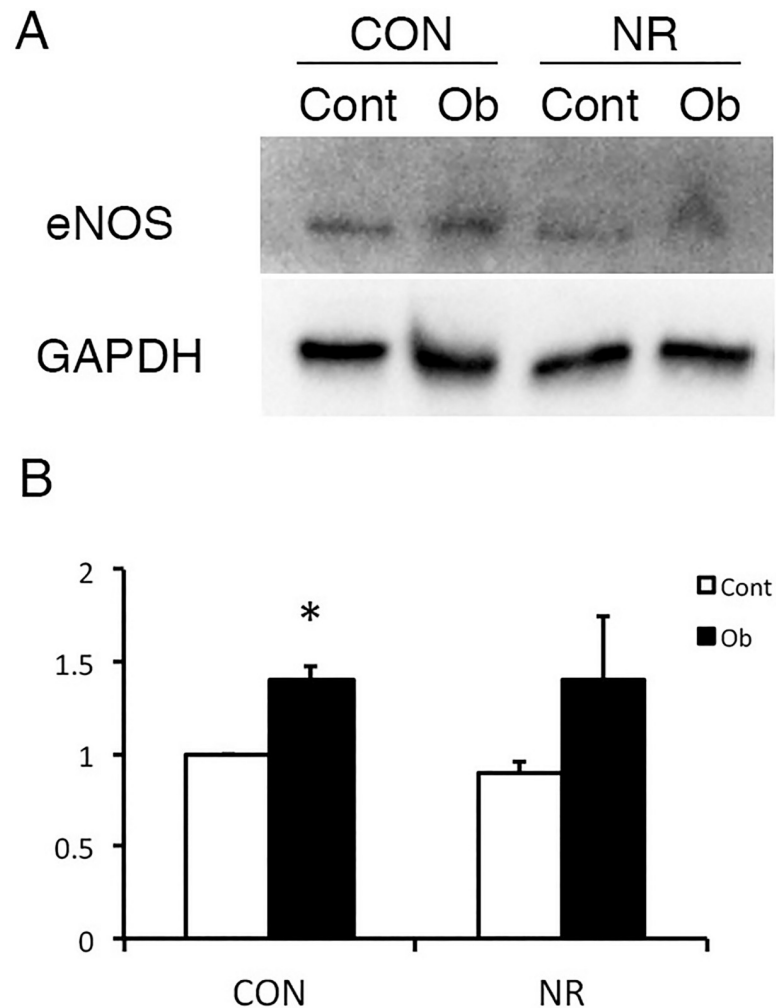


Fig 4. eNOS expression in the contralateral and obstructed kidney of offspring from control and nutrient restricted mothers. (A) A representative immunoblot. (B) Quantitative analysis. CON, controls; NR, maternal nutrient restriction; Cont, contralateral kidneys; Ob, obstructed kidneys; n = 4; *, P<0.05 vs Cont. Not all the samples were examined because the variation was small easily reaching statistical significance.

<https://doi.org/10.1371/journal.pone.0221686.g004>

production was ascribed to increased iNOS activity. Genetically engineered mice with reduced tubular NO activity was shown to be protected against progressive fibrosis in folate and UUO nephropathy [35]. In that study, reduced NO activity was associated with reduced expression of collagen. Thus NO could be injurious in the UUO model depending on the setting.

Evidence suggests that cytotoxic effects of NO is attributed to peroxynitrite which is produced from the reaction between NO and superoxide anion [36]. Peroxynitrite then oxidizes lipids and nitrates tyrosine residues of proteins forming nitrotyrosine. Thus nitrotyrosine is considered to be a marker of peroxynitrite formation as well as NO production. In the present study, nitrotyrosine was upregulated in the obstructed kidney of NR compared with CON indicating the increased formation of peroxynitrite. One of the mechanisms of action of peroxynitrite is cell signaling. Of particular relevance to UUO is the activation of ERK by peroxynitrite [36]. Thus ERK has been shown to be involved in fibrosis, apoptosis, and TGF- β 1 production induced by kidney obstruction [23, 37].

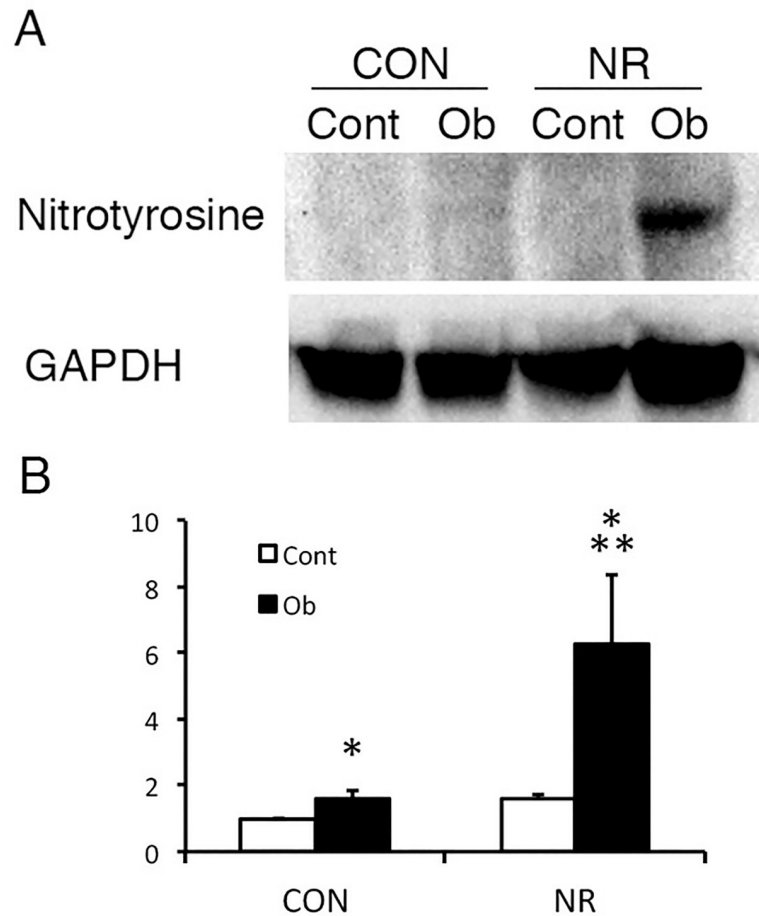


Fig 5. Nitrotyrosine expression in the contralateral and obstructed kidney of offspring from control and nutrient restricted mothers. (A) A representative immunoblot. (B) Quantitative analysis. CON, controls; NR, maternal nutrient restriction; Cont, contralateral kidneys; Ob, obstructed kidneys; n = 4; *, P<0.05 vs Cont; **, P<0.05 vs Ob of CON. Not all the samples were examined because the variation was small easily reaching statistical significance.

<https://doi.org/10.1371/journal.pone.0221686.g005>

In animal models of IUGR, eNOS in aorta and pulmonary artery endothelial cells was reported to be decreased [38, 39]. In our study, however, eNOS expression in NR was not different from that in CON in either the contralateral or obstructed kidney. In contrast to eNOS, iNOS expression was reported to be elevated in the kidney of IUGR rabbits induced by uteroplacental ligation, which was associated with increased reactive oxygen species and nitrotyrosine [40]. Increase in iNOS, therefore, may be the cause of the increased NO and subsequent formation of nitrotyrosine in the obstructed kidney of NR.

Capillary rarefaction is known to occur in various organs by an adverse intrauterine environment [41]. In the kidney, we recently reported peritubular capillary rarefaction in humans born with extremely low birth weight and IUGR [3]. Reduced peritubular capillaries, a crucial factor in the progression of fibrosis *via* aggravation of hypoxia, have also been reported in adult sheep exposed to maternal protein restriction [42]. In UUU, capillary rarefaction has been observed and associated with tubulointerstitial fibrosis. In the present study also, capillary density was decreased in the obstructed kidney compared with the contralateral kidney. There was, however, no difference between CON and NR in either contralateral or obstructed kidneys.

While more severe tubulointerstitial damage in IUGR models may have been ascribed to greater glomerular injury, we showed that maternal nutrient restriction has a direct effect on the tubulointerstitium since one-week UUU does not induce glomerulosclerosis. Of note, our previous study in extremely low birth weight survivors found that the frequency of elevated urine β_2 microglobulin, a marker of tubulointerstitial damage, increased with age in no association with low glomerular filtration rate [2]. It is possible that urine β_2 microglobulin or urine NOx may prove to be a marker for intrauterine stress. Also, other animal models with direct injury to the tubulointerstitium such as folic acid or cyclosporine A nephropathy may be helpful to confirm the effect of programming in renal fibrosis. The mechanisms for the increased oxidative/nitrosative stress in the kidney programmed by adverse intrauterine events need to be investigated. Epigenetic modifications are likely to play a role, which may give an opportunity for intervention.

Limitation of the present study is that we could not demonstrate the difference in blood pressure or renal function between CON and NR both before and after UUU. A more precise technique of measuring blood pressure, with telemetry in conscious rats, and or a higher number of litters may reveal the difference. The same applies to glomerular filtration rate. Also, we could not demonstrate the difference in other oxidative stress markers even if we tried several markers including urine 8-iso-prostaglandin F $_{2\alpha}$ and renal malonaldehyde expression.

Conclusions

Maternal nutrient restriction aggravates tubular necrosis and interstitial fibrosis after UUU in the offspring. The cause seems to be increased oxidative stress probably primed by the adverse intrauterine environment.

Supporting information

S1 File. NC3Rs ARRIVE guidelines checklist.

(PDF)

S1 Fig. Original raw image for Fig 1 CON.

(JPG)

S2 Fig. Original raw image for Fig 1 NR.

(JPG)

S3 Fig. Original raw image for Fig 2 CON contralateral.

(JPG)

S4 Fig. Original raw image for Fig 2 CON obstructed.

(JPG)

S5 Fig. Original raw image for Fig 2 NR contralateral.

(JPG)

S6 Fig. Original raw image for Fig 2 NR obstructed.

(JPG)

S7 Fig. Original raw image for Fig 3 CON CON.

(JPG)

S8 Fig. Original raw image for Fig 3 NR CON.

(JPG)

S9 Fig. Original raw image for Fig 3 CON Ob.
(JPG)

S10 Fig. Original raw image for Fig 3 NR Ob.
(JPG)

S11 Fig. Original raw image for Fig 4 eNOS. Left half is the used image.
(TIF)

S12 Fig. Original raw image for Fig 4 GAPDH. Left half is the used image.
(TIF)

S13 Fig. Original raw image for Fig 5 nitrotyrosine. Upper half is the used image.
(TIF)

S14 Fig. Original raw image for Fig 5 GAPDH. Right lower is the used image.
(TIF)

Acknowledgments

We are grateful for the technical assistance of the laboratory staff of Department of Pathology, Keio University School of Medicine.

Author Contributions

Conceptualization: Midori Awazu.

Data curation: Midori Awazu, Tokiya Abe, Mariko Hida.

Formal analysis: Midori Awazu, Tokiya Abe.

Funding acquisition: Midori Awazu, Mariko Hida.

Investigation: Midori Awazu, Akinori Hashiguchi.

Methodology: Tokiya Abe.

Project administration: Akinori Hashiguchi.

Supervision: Midori Awazu.

Writing – original draft: Midori Awazu.

Writing – review & editing: Midori Awazu.

References

1. Luyckx VA, Brenner BM. Birth weight, malnutrition and kidney-associated outcomes—a global concern. *Nat Rev Nephrol.* 2015; 11(3):135–49. Epub 2015/01/21. <https://doi.org/10.1038/nrneph.2014.251> PMID: 25599618.
2. Matsumura K, Matsuzaki Y, Hida M, Ikeda K, Awazu M. Tubular dysfunction in extremely low birth weight survivors. *Clin Exp Nephrol.* 2018; 20(10):1618–1645.
3. Asada N, Tsukahara T, Furuhashi M, Matsuoka D, Noda S, Naganuma K, et al. Polycythemia, capillary rarefaction, and focal glomerulosclerosis in two adolescents born extremely low birth weight and prematurity. *Pediatr Nephrol.* 2017; 32(7):1275–8. <https://doi.org/10.1007/s00467-017-3654-z> Epub 2017 Apr 24. PMID: 28435991
4. Manning J, Beutler K, Knepper MA, Vehaskari VM. Upregulation of renal BSC1 and TSC in prenatally programmed hypertension. *Am J Physiol Renal Physiol.* 2002; 283(1):F202–6. Epub 2002/06/13. <https://doi.org/10.1152/ajprenal.00358.2001> PMID: 12060603.

5. Vehaskari VM, Aviles DH, Manning J. Prenatal programming of adult hypertension in the rat. *Kidney Int.* 2001; 59(1):238–45. Epub 2001/01/03. <https://doi.org/10.1046/j.1523-1755.2001.00484.x> PMID: 11135076.
6. Black MJ, Lim K, Zimanyi MA, Sampson AK, Bubb KJ, Flower RL, et al. Accelerated age-related decline in renal and vascular function in female rats following early-life growth restriction. *Am J Physiol Regul Integr Comp Physiol.* 2015; 309(9):R1153–61. Epub 2015/09/18. <https://doi.org/10.1152/ajpregu.00403.2014> PMID: 26377562.
7. Ojeda NB. Low birth weight increases susceptibility to renal injury in a rat model of mild ischemia-reperfusion. *Am J Physiol Renal Physiol.* 2011; 301(2):F420–6. Epub 2011/05/27. <https://doi.org/10.1152/ajprenal.00045.2011> PMID: 21613420.
8. Plank C, Nusken KD, Menendez-Castro C, Hartner A, Ostreicher I, Amann K, et al. Intrauterine growth restriction following ligation of the uterine arteries leads to more severe glomerulosclerosis after mesangioproliferative glomerulonephritis in the offspring. *Am J Nephrol.* 2010; 32(4):287–95. Epub 2010/08/18. <https://doi.org/10.1159/000319045> PMID: 20714134.
9. Hellstrom M, Hessel H, Jacobsson B, Jodal U, Niklasson A, Wennerstrom M, et al. Association between urinary tract infection, renal damage and birth size. *Acta Paediatr.* 2001; 90(6):628–31. Epub 2001/07/07. PMID: 11440094.
10. Dickinson H, Moss TJ, Gatford KL, Moritz KM, Akison L, Fullston T, et al. A review of fundamental principles for animal models of DOHaD research: an Australian perspective. *J Dev Orig Health Dis.* 2016; 7(5):449–72. <https://doi.org/10.1017/S2040174416000477> PMID: 27689313
11. Awazu M, Hida M. Maternal nutrient restriction inhibits ureteric bud branching but does not affect the duration of nephrogenesis in rats. *Pediatr Res.* 2015; 77(5):633–9. Epub 2015/02/13. <https://doi.org/10.1038/pr.2015.24> PMID: 25675424.
12. Woods LL, Weeks DA, Rasch R. Programming of adult blood pressure by maternal protein restriction: role of nephrogenesis. *Kidney Int.* 2004; 65(4):1339–48. <https://doi.org/10.1111/j.1523-1755.2004.00511.x> PMID: 15086473
13. Buerkert J, Martin D, Head M, Prasad J, Klahr S. Deep nephron function after release of acute unilateral ureteral obstruction in the young rat. *J Clin Invest.* 1978; 62(6):1228–39. <https://doi.org/10.1172/JCI109243> PMID: 748376
14. Duymelincq C, Dauwe SE, De Greef KE, Ysebaert DK, Verpooten GA, De Broe ME. TIMP-1 gene expression and PAI-1 antigen after unilateral ureteral obstruction in the adult male rat. *Kidney Int.* 2000; 58(3):1186–201. <https://doi.org/10.1046/j.1523-1755.2000.00274.x> PMID: 10972681
15. Abe T, Hashiguchi A, Yamazaki K, Ebinuma H, Saito H, Kumada H, et al. Quantification of collagen and elastic fibers using whole-slide images of liver biopsy specimens. *Pathol Int.* 2013; 63(6):305–10. Epub 2013/06/21. <https://doi.org/10.1111/pin.12064> PMID: 23782332.
16. Futrakul P, Yenrudi S, Futrakul N, Sensirivatana R, Kingwatanakul P, Jungthirapanich J, et al. Tubular function and tubulointerstitial disease. *Am J Kidney Dis.* 1999; 33(5):886–91. Epub 1999/04/23. [https://doi.org/10.1016/s0272-6386\(99\)70421-x](https://doi.org/10.1016/s0272-6386(99)70421-x) PMID: 10213644.
17. Higgins DF, Kimura K, Bernhardt WM, Shrimanker N, Akai Y, Hohenstein B, et al. Hypoxia promotes fibrogenesis *in vivo* via HIF-1 stimulation of epithelial-to-mesenchymal transition. *J Clin Invest.* 2007; 117(12):3810–20. Epub 2007/11/27. <https://doi.org/10.1172/JCI30487> PMID: 18037992; PubMed Central PMCID: PMC2082142.
18. Ito K, Chen J, El Chaar M, Stern JM, Seshan SV, Khodadadian JJ, et al. Renal damage progresses despite improvement of renal function after relief of unilateral ureteral obstruction in adult rats. *Am J Physiol Renal Physiol.* 2004; 287(6):F1283–93. Epub 2004/08/26. <https://doi.org/10.1152/ajprenal.00441.2003> PMID: 15328069.
19. Stewart T, Jung FF, Manning J, Vehaskari VM. Kidney immune cell infiltration and oxidative stress contribute to prenatally programmed hypertension. *Kidney Int.* 2005; 68(5):2180–8. Epub 2005/10/14. <https://doi.org/10.1111/j.1523-1755.2005.00674.x> PMID: 16221217.
20. Dendooven A, Ishola DA Jr., Nguyen TQ, Van der Giezen DM, Kok RJ, Goldschmeding R, et al. Oxidative stress in obstructive nephropathy. *Int J Exp Pathol.* 2011; 92(3):202–10. Epub 2010/09/02. <https://doi.org/10.1111/j.1365-2613.2010.00730.x> PMID: 20804541; PubMed Central PMCID: PMC3101492.
21. Ricardo SD, Ding G, Eufemio M, Diamond JR. Antioxidant expression in experimental hydronephrosis: role of mechanical stretch and growth factors. *Am J Physiol.* 1997; 272(6 Pt 2):F789–98. Epub 1997/06/01. <https://doi.org/10.1152/ajprenal.1997.272.6.F789> PMID: 9227641.
22. Sunami R, Sugiyama H, Wang DH, Kobayashi M, Maeshima Y, Yamasaki Y, et al. Acatlasemia sensitizes renal tubular epithelial cells to apoptosis and exacerbates renal fibrosis after unilateral ureteral obstruction. *Am J Physiol Renal Physiol.* 2004; 286(6):F1030–8. Epub 2004/01/15. <https://doi.org/10.1152/ajprenal.00266.2003> PMID: 14722014.

23. Pat B, Yang T, Kong C, Watters D, Johnson DW, Gobe G. Activation of ERK in renal fibrosis after unilateral ureteral obstruction: modulation by antioxidants. *Kidney Int.* 2005; 67(3):931–43. <https://doi.org/10.1111/j.1523-1755.2005.00157.x> PMID: 15698432
24. Tarry-Adkins JL, Chen JH, Jones RH, Smith NH, Ozanne SE. Poor maternal nutrition leads to alterations in oxidative stress, antioxidant defense capacity, and markers of fibrosis in rat islets: potential underlying mechanisms for development of the diabetic phenotype in later life. *FASEB J.* 2010; 24(8):2762–71. Epub 2010/04/15. <https://doi.org/10.1096/fj.10.156075> PMID: 20388698.
25. Manucha W. Biochemical-molecular markers in unilateral ureteral obstruction. *Biocell.* 2007; 31(1):1–12. PMID: 17665634
26. Hegarty NJ, Young LS, Kirwan CN, O'Neill AJ, Bouchier-Hayes DM, Sweeney P, et al. Nitric oxide in unilateral ureteral obstruction: effect on regional renal blood flow. *Kidney Int.* 2001; 59(3):1059–65. Epub 2001/03/07. <https://doi.org/10.1046/j.1523-1755.2001.0590031059.x> PMID: 11231361.
27. Manucha W, Oliveros L, Carrizo L, Seltzer A, Valles P. Losartan modulation on NOS isoforms and COX-2 expression in early renal fibrogenesis in unilateral obstruction. *Kidney Int.* 2004; 65(6):2091–107. Epub 2004/05/20. <https://doi.org/10.1111/j.1523-1755.2004.00643.x> PMID: 15149322.
28. Thomas SE, Anderson S, Gordon KL, Oyama TT, Shankland SJ, Johnson RJ. Tubulointerstitial disease in aging: evidence for underlying peritubular capillary damage, a potential role for renal ischemia. *J Am Soc Nephrol.* 1998; 9(2):231–42. Epub 1998/04/04. PMID: 9527399.
29. Morrissey JJ, Ishidoya S, McCracken R, Klahr S. Nitric oxide generation ameliorates the tubulointerstitial fibrosis of obstructive nephropathy. *J Am Soc Nephrol.* 1996; 7(10):2202–12. Epub 1996/10/01. PMID: 8915981.
30. Ito K, Yoshii H, Asano T, Seta K, Mizuguchi Y, Yamanaka M, et al. Adrenomedullin increases renal nitric oxide production and ameliorates renal injury in mice with unilateral ureteral obstruction. *J Urol.* 2010; 183(4):1630–5. Epub 2010/02/23. <https://doi.org/10.1016/j.juro.2009.12.002> PMID: 20172553.
31. Miyajima A, Chen J, Poppas DP, Vaughan ED Jr., Felsen D. Role of nitric oxide in renal tubular apoptosis of unilateral ureteral obstruction. *Kidney Int.* 2001; 59(4):1290–303. Epub 2001/03/22. <https://doi.org/10.1046/j.1523-1755.2001.0590041290.x> PMID: 11260390.
32. Xia W, Szomor Z, Wang Y, Murrell GA. Nitric oxide enhances collagen synthesis in cultured human tendon cells. *J Orthop Res.* 2006; 24(2):159–72. <https://doi.org/10.1002/jor.20060> PMID: 16435353
33. Thornton FJ, Schaffer MR, Witte MB, Moldawer LL, MacKay SL, Abouhamze A, et al. Enhanced collagen accumulation following direct transfection of the inducible nitric oxide synthase gene in cutaneous wounds. *Biochem Biophys Res Commun.* 1998; 246(3):654–9. <https://doi.org/10.1006/bbrc.1998.8681> PMID: 9618268
34. Njoku CJ, Patrick KS, Ruiz P Jr., Oates JC. Inducible nitric oxide synthase inhibitors reduce urinary markers of systemic oxidant stress in murine proliferative lupus nephritis. *J Investig Med.* 2005; 53(7):347–52. <https://doi.org/10.2310/6650.2005.53705> PMID: 16297360
35. Tomlinson JA, Caplin B, Boruc O, Bruce-Cobbold C, Cutillas P, Dormann D, et al. Reduced renal methylarginine metabolism protects against progressive kidney damage. *J Am Soc Nephrol.* 2015; 26(12):3045–59. <https://doi.org/10.1681/ASN.2014030280> Epub 2015 Apr 8. PMID: 25855779
36. Pacher P, Beckman JS, Liaudet L. Nitric oxide and peroxynitrite in health and disease. *Physiol Rev.* 2007; 87(1):315–424. <https://doi.org/10.1152/physrev.00029.2006> PMID: 17237348
37. Fujita H, Hida M, Kanemoto K, Fukuda K, Nagata M, Awazu M. Cyclic stretch induces proliferation and TGF- β 1-mediated apoptosis via p38 and ERK in ureteric bud cells. *Am J Physiol Renal Physiol.* 2010; 299(3):F648–55. Epub 2010/04/16. <https://doi.org/10.1152/ajprenal.00402.2009> PMID: 20392803.
38. Franco Mdo C, Arruda RM, Dantas AP, Kawamoto EM, Fortes ZB, Scavone C, et al. Intrauterine undernutrition: expression and activity of the endothelial nitric oxide synthase in male and female adult offspring. *Cardiovasc Res.* 2002; 56(1):145–53. Epub 2002/09/19. PMID: 12237175.
39. Rozance PJ, Seedorf GJ, Brown A, Roe G, O'Meara MC, Gien J, et al. Intrauterine growth restriction decreases pulmonary alveolar and vessel growth and causes pulmonary artery endothelial cell dysfunction in vitro in fetal sheep. *Am J Physiol Lung Cell Mol Physiol.* 2011; 301(6):L860–71. Epub 2011/08/30. <https://doi.org/10.1152/ajplung.00197.2011> PMID: 21873446; PubMed Central PMCID: PMC3233832.
40. Figueroa H, Cifuentes J, Lozano M, Alvarado C, Cabezas C, Eixarch E, et al. Nitric oxide synthase and changes in oxidative stress levels in embryonic kidney observed in a rabbit model of intrauterine growth restriction. *Prenat Diagn.* 2016; 36(7):628–35. Epub 2016/04/26. <https://doi.org/10.1002/pd.4829> PMID: 27109011.
41. Norman M. Low birth weight and the developing vascular tree: a systematic review. *Acta Paediatr.* 2008; 97(9):1165–72. Epub 2008/06/17. <https://doi.org/10.1111/j.1651-2227.2008.00904.x> PMID: 18554273.

42. Lloyd LJ, Foster T, Rhodes P, Rhind SM, Gardner DS. Protein-energy malnutrition during early gestation in sheep blunts fetal renal vascular and nephron development and compromises adult renal function. *J Physiol*. 2012; 590(2):377–93. Epub 2011/11/23. <https://doi.org/10.1113/jphysiol.2011.220186> PMID: [22106177](https://pubmed.ncbi.nlm.nih.gov/22106177/); PubMed Central PMCID: PMC3276846.