



Resolution of morphology-based taxonomic delusions: *Acrocordiella*, *Basiseptospora*, *Blogiascospora*, *Clypeosphaeria*, *Hymenopleella*, *Lepteutypa*, *Pseudapiospora*, *Requienella*, *Seiridium* and *Strickeria*

W.M. Jaklitsch^{1,2}, A. Gardiennet³, H. Voglmayr²

Key words

Ascomycota
Dothideomycetes
new genus
phylogenetic analysis
pyrenomycetes
Pyrenulales
Sordariomycetes
Xylariales

Abstract Fresh material, type studies and molecular phylogeny were used to clarify phylogenetic relationships of the nine genera *Acrocordiella*, *Blogiascospora*, *Clypeosphaeria*, *Hymenopleella*, *Lepteutypa*, *Pseudapiospora*, *Requienella*, *Seiridium* and *Strickeria*. At first sight, some of these genera do not seem to have much in common, but all were found to belong to the *Xylariales*, based on their generic types. Thus, the most peculiar finding is the phylogenetic affinity of the genera *Acrocordiella*, *Requienella* and *Strickeria*, which had been classified in the *Dothideomycetes* or *Eurotiomycetes*, to the *Xylariales*. *Acrocordiella* and *Requienella* are closely related but distinct genera of the *Requienellaceae*. Although their ascospores are similar to those of *Lepteutypa*, phylogenetic analyses do not reveal a particularly close relationship. The generic type of *Lepteutypa*, *L. fuckelii*, belongs to the *Amphisphaeriaceae*. *Lepteutypa sambuci* is newly described. *Hymenopleella* is recognised as phylogenetically distinct from *Lepteutypa*, and *Hymenopleella hippophaëicola* is proposed as new name for its generic type, *Sphaeria* (= *Lepteutypa*) *hippophaës*. *Clypeosphaeria uniseptata* is combined in *Lepteutypa*. No asexual morphs have been detected in species of *Lepteutypa*. *Pseudomassaria fallax*, unrelated to the generic type, *P. chondrospora*, is transferred to the new genus *Basiseptospora*, the genus *Pseudapiospora* is revived for *P. corni*, and *Pseudomassaria carolinensis* is combined in *Beltraniella* (*Beltraniaceae*). The family *Clypeosphaeriaceae* is discontinued, because the generic type of *Clypeosphaeria*, *C. mamillana*, is a member of the *Xylariaceae*. The genus *Seiridium*, of which the sexual morph *Blogiascospora* is confirmed, is unrelated to *Lepteutypa*, as is *Lepteutypa cupressi*. The taxonomy of the cypress canker agents is discussed. The family *Sporocadaceae* is revived for a large clade of the *Xylariales* that contains *Hymenopleella*, *Seiridium* and *Strickeria* among a number of other genera. Neotypes are proposed for *Massaria fuckelii* and *Sphaeria hippophaës*. *Didymella vexata*, *Seiridium marginatum*, *Sphaeria corni*, *Sphaeria hippophaës*, *Sphaeria seminuda* are epitypified, *Apiosporina fallax*, *Massaria occulta*, *Sphaeria mamillana* and *Strickeria kochii* are lecto- and epitypified. We also provide DNA data for *Broomella vitalbae*, *Cainia desmazieri* and *Creosphaeria sassafras*.

Article info Received: 19 August 2015; Accepted: 11 November 2015; Published: 13 January 2016.

INTRODUCTION

The starting point of this work was the collection of a fungus in Northern England during the BMS Ascomycete workshop in May 2011. This fungus was initially identified as *Requienella seminuda*. Later collections of true *Requienella* spp. from *Fraxinus* in Scandinavia and *Olea* in Crete, however, showed that the fungus from England on *Sambucus* is not congeneric with *Requienella* but with *Lepteutypa* and is thus described as the new species *Lepteutypa sambuci* below. To determine this relationship, the type species of *Lepteutypa*, *L. fuckelii*, was recollected and sequenced. *Seiridium* has been claimed to be the asexual morph of *Lepteutypa* (implemented in Index Fungorum) and the latter was proposed to be synonymised under *Seiridium* in a nomenclatural session at the IMC10 in Bangkok based on the sexual-asexual connection implemented in Index Fungorum, although the relationship was not based on the generic types of *Lepteutypa* and *Seiridium*. Therefore the generic type of

Seiridium, *S. marginatum* and its *Blogiascospora* sexual morph were recollected and sequenced. *Acrocordiella* was included in the study in order to assess its relationship to *Requienella*, of which it was treated as a synonym. The *Requienellaceae* are here determined as a family of the *Xylariales*. Last but not least, *Strickeria* was included, because it had been used for species of *Dothideomycetes*, but turned out to belong to the *Xylariales* in this study. The history of taxonomic treatments is given for each genus in the Taxonomy section. This work is a continuation of Jaklitsch & Voglmayr (2012), who determined the phylogenetic affiliations of five genera of the *Xylariales*. Additional data and phylogenetic evidence allow us also to reclassify species of *Pseudomassaria*, which are not congeneric with the generic type, *P. chondrospora*. During manuscript preparation the phylogenetic treatment of the *Xylariomycetidae* by Senanayake et al. (2015) became available, which finally called for inclusion of *Clypeosphaeria mamillana* and *Pseudapiospora* (*Pseudomassaria*) *corni* in this work.

MATERIALS AND METHODS

Isolates and specimens

All isolates used in this study originated from ascospores or conidia of fresh specimens. Numbers of strains including

¹ Institute of Forest Entomology, Forest Pathology and Forest Protection, Dept. of Forest and Soil Sciences, BOKU-University of Natural Resources and Life Sciences, Hasenauerstraße 38, 1190 Vienna, Austria.

² Division of Systematic and Evolutionary Botany, Department of Botany and Biodiversity Research, University of Vienna, Rennweg 14, 1030 Vienna, Austria; corresponding author e-mail: walter.jaklitsch@univie.ac.at.

³ 14 rue Roulette, F-21260 Véronnes, France.

Table 1 Isolates and accession numbers used in the phylogenetic analyses. Isolates/sequences in **bold** were isolated/sequenced in the present study.

Taxon	Strain	GenBank accessions		Taxon	Strain	GenBank accessions	
		ITS	LSU			ITS	LSU
Acrocordiella occulta	RS9	KT949893	KT949893	<i>Leiosphaerella praeclara</i>	CBS 125586	JF440976	JF440976
	RS10	KT949894	KT949894	<i>Lepteutypa cupressi</i>	IMI 052255	AF009817	AF382379
<i>Adisciso tricellulare</i>	NBRC 32705	AB594796	AB593728	<i>Lepteutypa fuckelii</i>	LEF = CBS 140409	KT949902	KT949902
<i>Adisciso yakushimense</i>	HHUF 29671	AB594789	AB593721		LEF1	KT949903	KT949903
<i>Alnecium auctum</i>	CBS 124263	–	KF570154	<i>Lepteutypa sambuci</i>	RS = CBS 131707	KT949904	KT949904
<i>Amphibambusa bambusicola</i>	MFLUCC 11-0617	KP744433	KP744474		RS5	KT949905	KT949905
<i>Amphisphaeria sorbi</i>	MFLUCC 13-0721	KR092797	KP744475		RS6	KT949906	KT949906
<i>Amphisphaeria umbrina</i>	HKUCC 994	AF009805	AF452029	<i>Lopadostoma dryophilum</i>	CBS 133213	KC774570	KC774570
<i>Anthostoma decipiens</i>	CD = CBS 133221	KC774565	KC774565	<i>Lopadostoma gastrinum</i>	CBS 134632	KC774584	KC774584
<i>Anthostomella brabeji</i>	CBS 110128	EU552098	EU552098	<i>Lopadostoma turgidum</i>	CBS 133207	KC774618	KC774618
<i>Anthostomella eucalyptorum</i>	CBS 120036	DQ890026	DQ890026	<i>Melanconis stilbostoma</i>	CBS 121894	–	JQ926229
<i>Apiospora bambusae</i>	ICMP 6889	–	DQ368630	<i>Melogramma campylosporium</i>	MBU	JF440978	JF440978
<i>Apiospora setosa</i>	ICMP 4207	–	DQ368631	<i>Microdochium lycopodium</i>	CBS 122885	JQ440979	JQ440979
<i>Arecophila bambusae</i>	HKUCC 4794	–	AF452038	<i>Microdochium phragmitis</i>	CBS 285.71	AJ279449	EU926218
<i>Arthrinium phragmites</i>	CBS 135458	KF144909	KF144956	<i>Monochaetia kansensis</i>	PSHI2004Endo1030	DQ534044	DQ534035
<i>Arthrinium saccharicola</i>	CBS 831.71	KF144922	KF144969	<i>Monochaetia monochaeta</i>	CBS 199.82	–	AF382370
<i>Atrotorquata lineata</i>	HKUCC 3263	AF009807	–	<i>Morinia pestalozzioides</i>	F-090354	AY929325	–
<i>Barmaelia macrospora</i>	BM	KC774566	KC774566	<i>Nectria cinnabarina</i>	CBS 125165	–	HM484562
<i>Bartalinia laurina</i>	HKUCC 6537	AF405302	AF382369	<i>Neopestalotiopsis protearum</i>	CBS 114178	JN712498	JN712564
<i>Bartalinia pondoensis</i>	CMW 31067	GU291796	GU291796	<i>Neopestalotiopsis rosae</i>	CBS 101057	KM199359	KM116245
<i>Bartalinia robillardoides</i>	CBS 122705	KJ710460	KJ710438	<i>Ophiostoma piliferum</i>	CBS 158.74	–	DQ470955
<i>Basiseptospora fallax</i>	PSC	JF440983	JF440983	<i>Pestalotiopsis knightiae</i>	CBS 114138	KM199310	KM116227
<i>Beltrania pseudorhombica</i>	CBS 138003	KJ869158	KJ869215	<i>Pestalotiopsis malayana</i>	CBS 102220	KM199306	KM116238
<i>Beltrania rhombica</i>	strain 16.1	–	–	<i>Phlogicylindrium eucalyptorum</i>	CBS 111689	KF251205	KF251708
<i>Beltraniella carolinensis</i>	IFO 9502 = NBRC 9502	00950202*	DQ810233	<i>Phlogicylindrium uniforme</i>	CBS 131312	JQ044426	JQ044445
				<i>Polyancora globosa</i>	CBS 118182	DQ396469	DQ396466
<i>Beltraniella endiandrae</i>	CBS 137976	KJ869128	KJ869185	<i>Pseudapiospora corni</i>	PCO = CBS 140736	KT949907	KT949907
<i>Beltraniella odinae</i>	NBRC 6774	00677401*	00677401*		PCO1	KT949908	KT949908
<i>Beltraniella portoricensis</i>	NBRC 9079	00907901*	00907901*	<i>Pseudomassaria chondrospora</i>	CBS 125600	JF440981	JF440981
<i>Beltraniopsis neolitsea</i>	CBS 137974	KJ869126	KJ869183	<i>Pseudomassaria sepincoli-</i> <i>formis</i>	CBS 129022	JF440984	JF440984
<i>Biscogniauxia nummularia</i>	MUCL 51395	JX658444	KT281894	<i>Pseudomassariella vexata</i>	LVE	JF440977	JF440977
<i>Broomella vitalbae</i>	BV = CBS 140412	KT949895	KT949895	<i>Pseudopestalotiopsis cocos</i>	CBS 272.29	KM199378	KM116276
<i>Cainia desmazieri</i>	CAI	KT949896	KT949896	<i>Pseudopestalotiopsis theae</i>	MFLUCC 12–0055	NR_111716	KM116282
<i>Cainia graminis</i>	CBS 136.62	KR092793	AF431949	<i>Repetophragma inflatum</i>	NN 42958	–	DQ408576
<i>Calosphaeria pulchella</i>	CCTU 316	–	JX876611	<i>Requienella fraxini</i>	RS2	KT949909	KT949909
<i>Camillea obularia</i>	ATCC 28093	AF201714	–		RS3	KT949910	KT949910
<i>Chaetosphaeria innumera</i>	MR 1175	–	AF178551		RS7	KT949911	KT949911
<i>Ciliochorella castaneae</i>	HHUF 28799	–	AB433277	<i>Requienella seminuda</i>	RS12	KT949912	KT949912
<i>Clypeosphaeria mamillana</i>	CLM = CBS 140735	KT949897	KT949897		RS13	KT949913	KT949913
				<i>Robillarda africana</i>	CBS 122.75	KR873253	KR873281
				<i>Robillarda sessilis</i>	CBS 114312	KR873256	KR873284
<i>Clypeosphaeria uniseptata</i>	HKUCC 6349	–	DQ810219	<i>Sarcostroma restionis</i>	CBS 118154	DQ278922	DQ278924
<i>Colodiscula japonica</i>	CBS 124266	JF440974	JF440974	<i>Seimatosporium eucalypti</i>	CBS 115131	JN871200	JN871209
<i>Conioecia maxima</i>	strain Co117	GU553332	GU553344	<i>Seimatosporium hypericinum</i>	NBRC 32647	AB594805	AB593737
<i>Conioecia nodulisporioides</i>	CBS 281.77	GU553333	GU553352	<i>Seimatosporium rosae</i>	MFLUCC 14-0621	KT198726	KT198727
<i>Creosphaeria sassafras</i>	CrS = CBS 127876	KT949900	KT949900	<i>Seiridium cardinale</i>	CBS 172.56	–	AF382376
<i>Cryptovalsa rabenhorstii</i>	Crel = CBS 125574	KC774567	KC774567	<i>Seiridium cupressi</i>	ATCC 48158	FJ430600	–
<i>Daldinia concentrica</i>	CBS 113277	AY616683	KT281895	<i>Seiridium marginatum</i>	BLO = CBS 140403	KT949914	KT949914
<i>Diaporthe eres</i>	CBS 109767	–	AF408350		SEI	KT949915	KT949915
<i>Diatrype disciformis</i>	CBS 197.49	–	DQ470964		SEI1 = CBS 140404	KT949916	KT949916
<i>Diatrype palmicola</i>	MFLUCC 11–0018	KP744439	KP744481	<i>Seiridium papillatum</i>	CBS 340.97	–	DQ414531
<i>Diatrype whitmanensis</i>	ATCC MYA-4417	FJ746656	FJ430587	<i>Seiridium phylicae</i>	CPC 19965	KC005787	KC005809
<i>Discosia artocreas</i>	NBRC 8975	AB594773	AB593705	<i>Seynesia erumpens</i>	SMH 1291	–	AF279410
<i>Discosia pini</i>	MAFF 410149	AB594776	AB593708	<i>Sporidesmium knawiae</i>	CBS 123529	FJ349609	FJ349610
<i>Discostroma tostum</i>	NBRC 32626	AB594795	AB593727	<i>Strickeria kochii</i>	C138	KT949917	KT949917
<i>Dyrithiopsis lakefuiensis</i>	HKUCC 7303	–	AF452047		C143 = CBS 140411	KT949918	KT949918
<i>Ellurema indica</i>	IMI 136542	AF009816	–	<i>Stromatonectria caraganae</i>	CBS 125579	–	HQ112288
<i>Eutypa lata</i>	CBS 208.87	DQ006927	–	<i>Truncatella angustata</i>	ICMP 7062	AF405306	AF382383
<i>Funiliomyces biseptatus</i>	CBS 100373	–	AY772015	<i>Truncatella hartigii</i>	CBS 118148	DQ278913	DQ278928
<i>Graphostroma platystoma</i>	CBS 270.87	JX658535	AY083827	<i>Truncatella restionacearum</i>	CMW 18755	DQ278915	DQ278929
<i>Hymenoplectra hippo-</i> <i>phaëicola</i>	LH = CBS 140410	KT949901	KT949901	<i>Vialaea mangifera</i>	MFLUCC 12–0808	KF724974	KF724975
<i>Hyponectria buxi</i>	UME 31430	–	AY083834	<i>Vialaea minutella</i>	BRIP 56959	KC181926	KC181924
<i>Hypoxyylon fragiforme</i>	MUCL 51264	KC477229	–	<i>Xylaria hypomyxon</i>	CBS 122620	AM993141	–
<i>Idriella lunata</i>	MUCL 7551	KC775735	KC775710	<i>Xylaria polyomorpha</i>	MUCL_49904	FN689809	KT281899
<i>Immersidiscosia eucalypti</i>	MAFF 242781	AB594793	AB593725	<i>Zetiaspizna acaciae</i>	CBS 137994	KJ869149	KJ869206
<i>Kretzschmaria deusta</i>	CBS 163.93	KC477237	KT281896				
<i>Leiosphaerella lycopodina</i>	CBS 125717	JF440975	JF440975				

* Sequence downloaded from the Biological Resource Center (NBRC), NITE, Japan (<http://www.nbrc.nite.go.jp/>)

NCBI GenBank accession numbers of gene sequences used to compute the phylogenetic trees are listed in Table 1. Strain acronyms other than those of official culture collections are used here primarily as strain identifiers throughout the work. Representative isolates have been deposited at the CBS-KNAW Fungal Biodiversity Centre, Utrecht, The Netherlands (CBS). Details of the specimens used for morphological investigations are listed in the Taxonomy section under the respective descriptions. Herbarium acronyms are according to Thiers (2015), abbreviations of exsiccata according to Triebel & Scholz (2015). Freshly collected specimens have been deposited in the Herbarium of the Institute of Botany, University of Vienna (WU).

Culture preparation, growth rate determination and phenotype analysis

Cultures were prepared and maintained as described previously (Jaklitsch 2009) except that CMD (CMA: Sigma, St Louis, Missouri; supplemented with 2 % (w/v) D(+)-glucose-mono-hydrate) or 2 % malt extract agar (MEA; 2 % w/v malt extract, 2 % w/v agar-agar; Merck, Darmstadt, Germany) was used as the isolation medium. Cultures used for the study of asexual morph micro-morphology were grown on CMD or 2 % MEA at 22 ± 3 °C under alternating 12 h cool daylight and 12 h darkness. Microscopic observations were made in tap water except where noted. Morphological analyses of microscopic

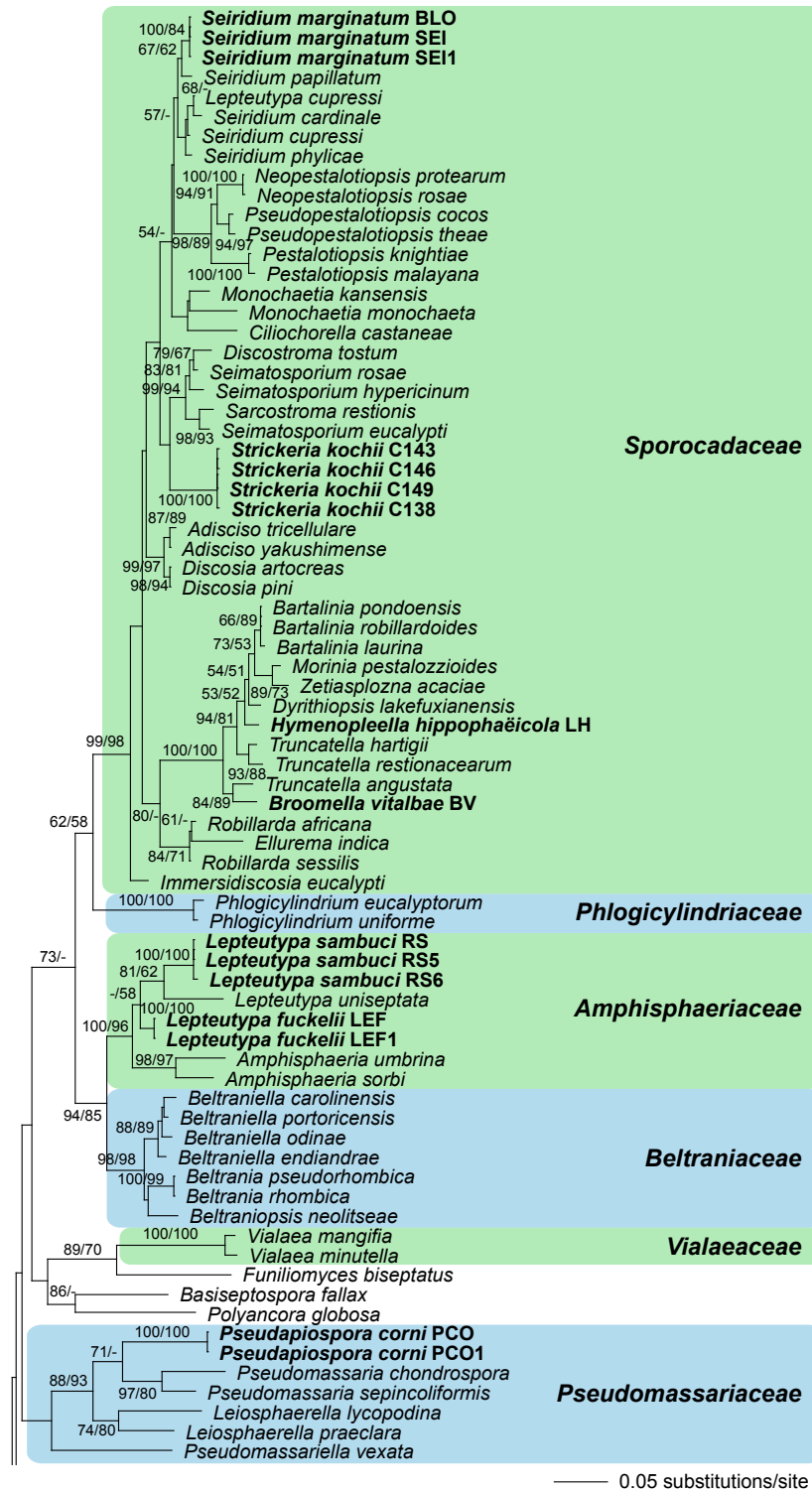


Fig. 1 Phylogram of the best maximum likelihood tree (lnL = -19786.9825) revealed by RAxML from an analysis of a representative ITS-LSU rDNA matrix from Xylariales, showing the phylogenetic position of *Acrocordiella*, *Basiseptospora*, *Blogiascospora*, *Clypeosphaeria*, *Hymenopleella*, *Lepteutypa*, *Pseudapiospora*, *Requienella*, *Seiridium* and *Strickeria*. ML and MP bootstrap support above 50 % are given above or below the branches. The tree was rooted with eight taxa from Sordariomycetes. Taxa in **bold** were sequenced in the present study.

characters were carried out as described earlier (Jaklitsch 2009). Methods of microscopy included stereomicroscopy using a Nikon SMZ 1500 and Nomarski differential interference contrast (DIC) using the compound microscopes Nikon Eclipse E600 and Zeiss Axio Imager A1 microscope equipped with a Zeiss Axiocam 506 colour digital camera. Images and data were gathered using a Nikon Coolpix 4500 or a Nikon DS-U2 digital camera and measured by using the NIS-Elements D v. 3.0 or Zeiss ZEN Blue Edition softwares. For certain images of ascomata the stacking software Zerene Stacker v. 1.04 (Zerene Systems LLC, Richland, WA, USA) was used. Measurements are reported as maximum and minimum in parentheses and the mean plus and minus the standard deviation of a number of measurements given in parentheses.

DNA extraction and sequencing methods

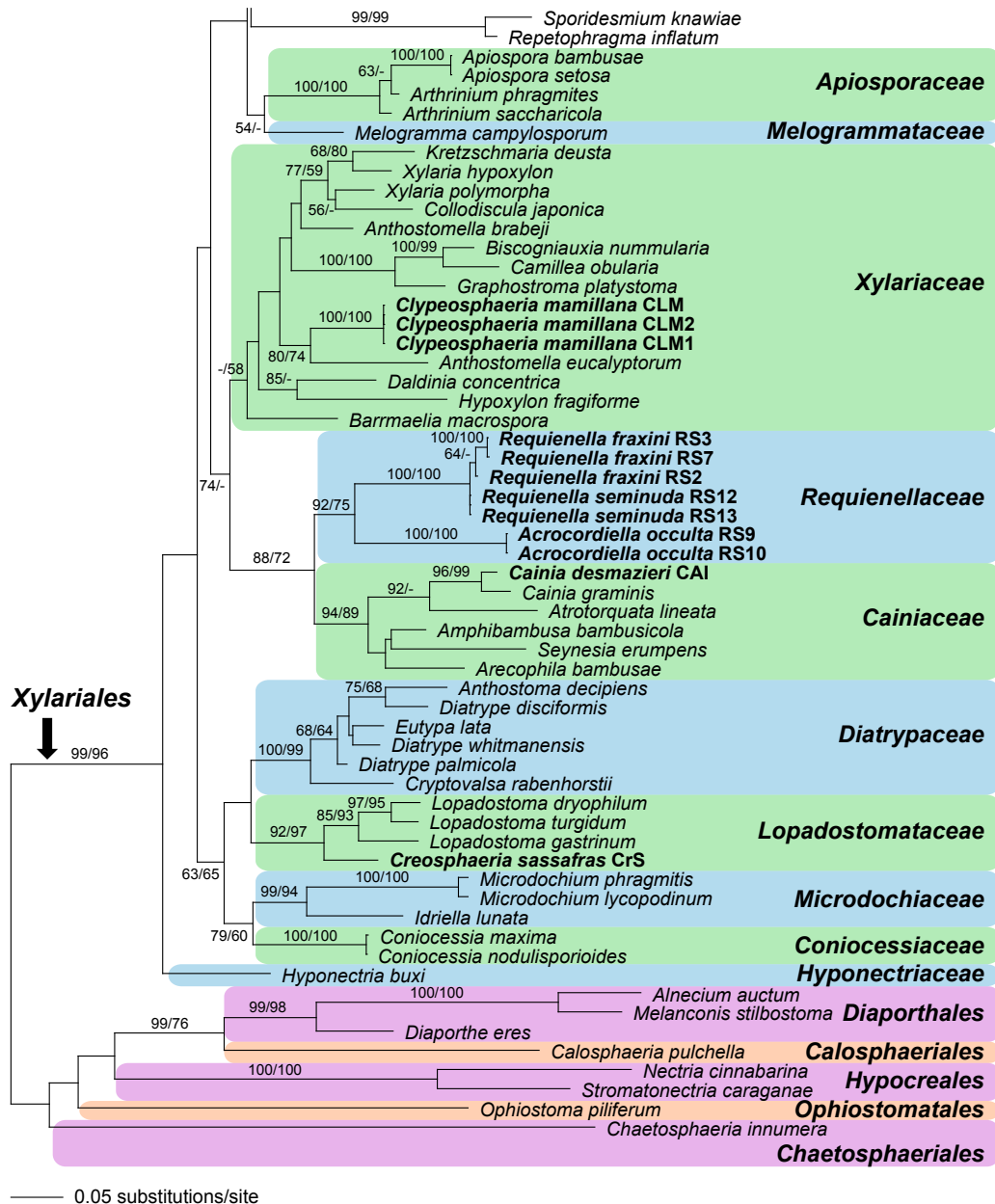
The extraction of genomic DNA was performed as reported previously (Voglmayr & Jaklitsch 2011, Jaklitsch et al. 2012) using the DNeasy Plant Mini Kit (QIAGEN GmbH, Hilden, Germany) or the modified CTAB method of Riethmüller et al. (2002). The following loci were amplified and sequenced: the complete internally transcribed spacer region (ITS1-5.8S-ITS2) and a c. 900 bp fragment of the large subunit nuclear ribosomal DNA

(nLSU rDNA), amplified and sequenced as a single fragment with primers V9G (De Hoog & Gerrits van den Ende 1998) and LR5 (Vilgalys & Hester 1990); a c. 1.2 kb fragment of the RNA polymerase II subunit 2 (*rpb2*) with primers fRPB2-5f and fRPB2-7cr (Liu et al. 1999); and a c. 1.3 kb fragment of the translation elongation factor 1-alpha (*tef1*) with primers EF1-728F (Carbone & Kohn 1999) and TEF1LLErev (Jaklitsch et al. 2005). PCR products were purified using an enzymatic PCR cleanup (Werle et al. 1994) as described in Voglmayr & Jaklitsch (2008). DNA was cycle-sequenced using the ABI PRISM Big Dye Terminator Cycle Sequencing Ready Reaction Kit v. 3.1 (Applied Biosystems, Warrington, UK) with the same primers as in PCR and an automated DNA sequencer (3730xl Genetic Analyzer, Applied Biosystems).

Analysis of sequence data

Due to the poor representation of other gene sequences for *Xylariales*, only the ITS and LSU rDNA were used for phylogenetic inference. To complement the data matrix, ITS and LSU sequences of a representative selection of *Xylariales* were downloaded from GenBank; for rooting the tree, LSU sequences of eight taxa of *Sordariomycetes* were included (Table 1). All alignments were produced with the server version of MAFFT

Fig. 1 (cont.)



(www.ebi.ac.uk/Tools/mafft), checked and refined using BioEdit v. 7.0.4.1 (Hall 1999). For phylogenetic analyses, the ITS and LSU matrices were combined. After exclusion of poorly aligned regions for the ITS containing large indels, the final matrix contained 518 and 852 nucleotide characters from the ITS and LSU, respectively.

Maximum likelihood (ML) analyses were performed with RAxML (Stamatakis 2006) as implemented in raxmlGUI 1.3 (Silvestro & Michalak 2012), using the ML + rapid bootstrap setting and the GTRGAMMAI substitution model with 1 000 bootstrap replicates. The matrix was partitioned for ITS and LSU, and substitution model parameters were calculated separately for the two regions.

Maximum parsimony (MP) bootstrap analysis of the combined matrix was performed with PAUP v. 4.0a142 (Swofford 2002). All molecular characters were unordered and given equal weight; analyses were performed with gaps treated as missing data; the COLLAPSE command was set to MINBRELEN. 1 000 MP bootstrap replicates were performed, with 5 rounds of random sequence addition and subsequent TBR branch swapping (MULTREES option in effect, steepest descent option not in effect), with each replicate limited to 1 million rearrangements.

RESULTS

Molecular phylogeny

Of the 1 370 characters, 519 were parsimony informative (273 for ITS, 246 for LSU). Fig. 1 shows the phylogram of the best ML tree (lnL = -19786.9825) obtained by RAxML. While most families except *Xylariaceae* received high bootstrap support, the deeper nodes of the tree backbone were mostly unsupported. The genus *Lepteutypa* was revealed as polyphyletic: while the generic type, *L. fuckelii*, *L. sambuci* and *Clypeosphaeria* (*Lepteutypa*) *uniseptata* formed a sister clade to *Amphisphaeria* within *Amphisphaeriaceae*, *L. hippophaës* and *L. cupressi* were placed within *Sporocadaceae* in the *Bartalinia*-*Broomella*-*Truncatella* and *Seiridium* subclades, respectively. *Strickeria kochii* was placed in the *Sporocadaceae* as well, with an unsupported sister group relationship to the *Discostroma*-*Seimatosporium* subclade (Fig. 1). The generic type of *Seiridium*, *Seiridium marginatum*, was placed within the *Seiridium* subclade, and sequence data confirmed *Blogiascospora marginata* as its sexual morph. *Acrocardiella* and *Requienella* were revealed as sister genera with medium (MP) to high (ML) support, and their sister group relationship to *Cainiaceae* received medium (MP) to high (ML) support. *Cainia desmazieri* was revealed as closely related to the generic type, *Cainia graminis*. *Clypeosphaeria mamillana* is shown to be unrelated to *Clypeosphaeria* (*Lepteutypa*) *uniseptata* but closest relative to *Anthostomella eucalyptorum* within *Xylariaceae*. *Pseudapiospora corni* was placed within *Pseudomassariaceae* as closest relative of *Pseudomassaria* with medium (ML) or no (MP) support. In agreement with Jaklitsch & Voglmayr (2012), *Pseudomassaria carolinensis* and *P. fallax* are not contained within *Pseudomassariaceae*, the former being placed within *Beltraniella* (*Beltraniaceae*) with high support, whereas the latter is closest relative of *Polyancora globosa*.

Taxonomy

Families are given in alphabetical order and the treated taxa are presented under each family: *Amphisphaeriaceae* (*Lepteutypa*), *Beltraniaceae* (*Beltraniella carolinensis*), *Pseudomassariaceae* (*Pseudapiospora*, *Pseudomassariella*), *Requienellaceae* (*Acrocardiella*, *Requienella*), *Sporocadaceae* (*Blogiascospora*/*Seiridium*, *Hymenoplella*, *Strickeria*), *Xylariaceae* (*Clypeosphaeria*), *Xylariales* inc. sed. (*Basiseptospora*).

Amphisphaeriaceae G. Winter 1885

Lepteutypa Petr., Ann. Mycol. 21: 276. 1923

Type species. *Lepteutypa fuckelii* (G.H. Otth) Petr.

Lepteutypa fuckelii (G.H. Otth) Petr., Ann. Mycol. 21: 276. 1923 — Fig. 2

Basionym. *Massaria fuckelii* G.H. Otth, Mitth. Naturf. Ges. Bern Nr. 654–683: 50. 1868.

= *Massaria fuckelii* Fuckel, Jahrb. Nassauischen Vereins Naturk. 23–24: 155. 1870. [1869–70].

Typification. Neotype proposed here: BELGIUM, Leuven, Heferlee, Heferleebos, on *Tilia cordata*, soc. *Amphisphaeria multipunctata*, 31 May 2012, P. Bormans (WU 33554; MBT202953; ex-neotype culture LEF = CBS 140409).

Perithecia immersed in sometimes slightly uneven bark, only visible as minute dark dots, sometimes surrounded by grey clypei 0.3–0.6 mm diam on the otherwise unaltered, light-coloured bark surface, scattered or aggregated in small groups, depressed globose, dark, (0.25–)0.45–0.57(–0.6) mm diam, 0.2–0.4 mm high; peridium 20–40 µm thick, brown, hyaline inside, pseudoparenchymatous. *Ostioles* inconspicuous to blunt papillate and shiny black, 80–150 µm diam, sometimes region around ostiole slightly darker and depressed; sometimes whitish to greyish brown mycelium present around perithecia. Apically free paraphyses 2–6 µm wide, simple, multiguttulate. *Asci* (107–)111–155(–185) × (9.8–)10.5–13.3(–14.5) µm (n = 20), cylindrical, with 8 uniseriate ascospores, with a short stipe, croziers and a thickened apex containing a thin amyloid apical ring, (3.0–)3.2–4.2(–4.5) µm wide and (0.7–)0.8–1.2(–1.4) µm high (n = 20). *Ascospores* (15.5–)17.5–22.8(–29.7) × (5.7–)6.5–8.0(–8.7) µm, l/w (2.0–)2.4–3.2(–4.2) (n = 114), oblong or narrowly fusiform, first hyaline, turning yellow to yellow-brown, with 1 median, slightly constricted euseptum and 2 distosepta, straight to slightly curved, multiguttulate when vital, hyaline to yellowish and with a narrow mucous sheath (e.g. 1.5 µm wide) or polar caps in the ascus when young, turning olive-green in Lugol, with 1 guttule per cell, massaria-like, i.e. with a dramatic difference between the living and dead state.

Culture characteristics — Growth radius after 1 mo at room temperature on CMD up to c. 25 mm, on MEA to c. 32 mm; colony circular, sometimes finely zonate, white, becoming brown, olive to nearly black from the centre, odour indistinct. No asexual morph observed.

Habitat — In bark of *Tilia* spp.

Distribution — Europe.

Additional material examined. GERMANY, Nordrhein-Westfalen, Schlosspark Tünnich at Kerpen, MTB 5106/142, 4 Mar. 2013, on attached branches of *Tilia cordata*, B. Wergen (WU 33555; culture LEF1); Rheingau, on *Tilia*, L. Fuckel, det. Th. Nitschke (B700009241); near Kiedrich, on *Tilia*, in spring, L. Fuckel, *Fungi Rhen. Exs.* 1769 (B700009240, G00127792); Oestrich, at Schloß Reichartshausen, on *Tilia*, in the winter, L. Fuckel (Nassau's flora, G00127791).

Notes — *Lepteutypa fuckelii* is an uncommon fungus. A good description of the species can be found in Petrak (1923). He interpreted perithecial colonies as eutypoid stromata forming small irregular spots, but noted that stromatic tissue is only comprised by subhyaline to brownish hyphae. Aberrant ascospores may contain 5 septa with sizes up to 35 × 10 µm. No asexual morph has been found for this species.

Nomenclatural background: Nitschke created the name *Massaria fuckelii*, but did not publish it. However, he corresponded with both Otth and Fuckel about the fungus, who collected their own materials and independently described the fungus. Otth (1868) was first, i.e. Fuckel's *Massaria fuckelii* is a heterotypic



Fig. 2 *Lepteutypa fuckelii*. a–c. Ostioles and clypei on the bark surface; d, i. ascus apices in Lugol; e–h. asci (g, h. in Lugol); j–q. ascospores (l, n–p. in 3% KOH; q. in Lugol) (a, b, j, k: WU 33555; c, e–h, l, m, q: WU 33554; d, i, n: G00127792; o: B700009240; p: G00127791). — Scale bars: a, c = 0.4 mm; b = 0.2 mm; d, j–m, p, q = 7 μ m; e–h, n, o = 15 μ m; i = 5 μ m.

homonym. Both authors cited Nitschke as the author in order to honour him as the creator of the name, but Nitschke did not provide the descriptions. Nitschke's impact could be honoured as author citations Nitschke ex Otth and Nitschke ex Fuckel, which, however, is not necessary. Specimens of *Massaria fuckelii* Fuckel collected by Fuckel, which are extant in B and G and labelled Typus, are not type specimens of *Massaria fuckelii* G.H. Otth. As there is no type material of G.H. Otth available, we propose a neotype here.

Lepteutypa hederæ (Fuckel) Rappaz, Mycol. Helv. 7: 160. 1995 — Fig. 3

Basionym. *Amphisphaeria hederæ* Fuckel, Jahrb. Nassauischen Vereins Naturk. 25–26: 304. 1871.

\equiv *Anthostoma hederæ* (Fuckel) Sacc., Syll. Fung. (Abellini) 1: 301. 1882.

Holotype. SWITZERLAND, near Neuchâtel, on dead, corticated branches of *Hedera helix*, by xyloxy probably *Viburnum* sp., Mar. 1867, P. Morthier (G001117261; Herbarium Fuckel 1894 ex Herb. Barbey-Boissier, as *Amphisphaeria hederæ* and *Anthostoma hederæ* on the label).

Perithecia immersed in bark and wood beneath black clypei being distinct in wood but diffuse in bark in surface view, flat, convex to pulvinate, 0.7–1.2 mm diam, 80–160 μ m thick; perithecia globose, 0.35–0.7 mm diam, 0.25–0.6 mm high; peridium brown, pseudoparenchymatous. *Paraphyses* numerous, simple. *Asci* oblong, containing 8 uniseriate ascospores, unitunicate but thick-walled, apex not containing a ring, inamyloid, not staining with Congo Red, a diffuse pulvillus turning blue in Cotton Blue (in water); stipe short. *Ascospores* (19.5–)22–29.2(–35.3) \times (7.0–)9.2–12.2(–14) μ m, l/w (1.6–)1.8–3.1(–4.6) (n = 40), ellipsoid, ovoid to oblong, usually inequilateral with pointed ends, 3-distoseptate, first hyaline, turning brown, indistinctly striate, appearing warted in section.

Habitat — In bark and wood of ?*Viburnum* sp.

Distribution — Switzerland, only known from the holotype.

Notes — See under *Lepteutypa sambuci* for a comparison of *L. hederæ* with that species. The generic affiliation of *L. hederæ* is still unverified, as no fresh material and sequence data are available.

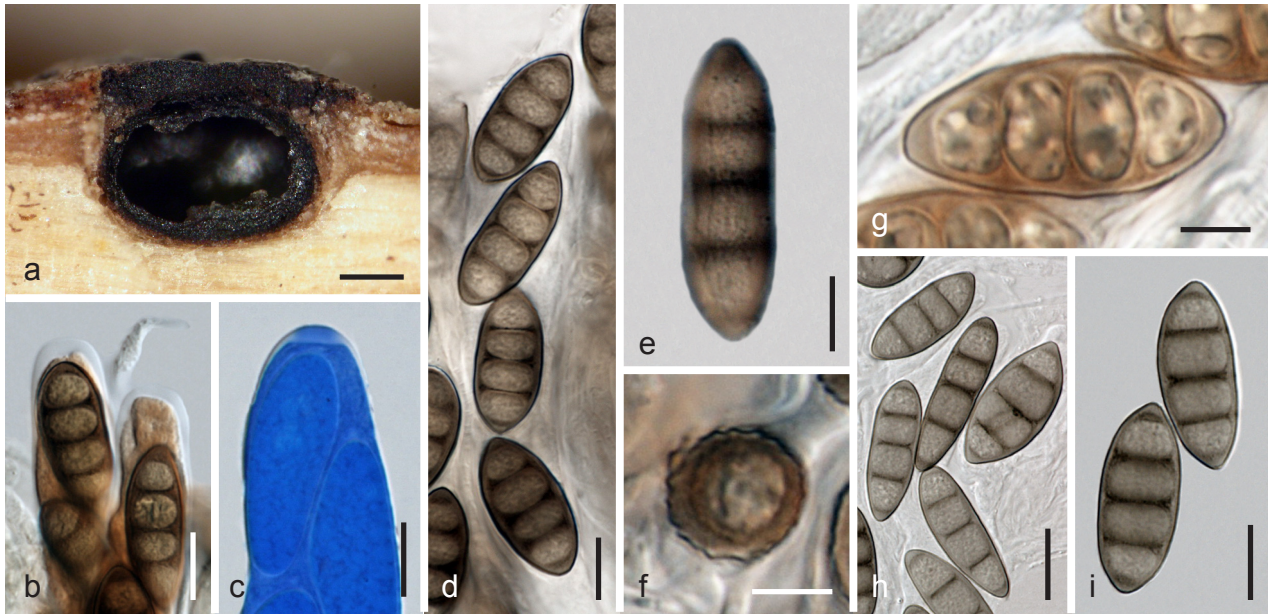


Fig. 3 *Lepteutypa hederæ* (G00111726). a. Ascoma and clypeus in vertical section; b, c. ascus apices (b. in Lugol; c. in aqueous cotton blue); d–i. ascospores (e, f. showing ridges; f. in transverse optical section; h, i. in 3% KOH). — Scale bars: a = 0.2 mm; b–d, i = 10 μ m; e = 7 μ m; f, g = 5 μ m; h = 15 μ m.

Lepteutypa sambuci Jaklitsch & Voglmayr, *sp. nov.* — MycoBank MB814827; Fig. 4

Etymology. Referring to its occurrence on *Sambucus*.

Holotype. ENGLAND, Yorkshire, Worksop, Rotherham, Anston, Anstonstones Wood, on partly decorticated branches of *Sambucus nigra*, 16 May 2011, T. Læssøe *et al.* (WU 33556, culture RS = CBS 131707).

Pseudostromata erumpent from wood, eutypoid, very variable in shape and size, roundish to longish, extending from a few mm to several cm, covered by a grey to black, 20–80 μ m thick ectostromatic zone, containing indistinct to white prosenchymatous entostroma and one to numerous perithecia; on bark only visible as minute circular ostiolar discs 50–180 μ m diam, with umbilicate perforation, sometimes surrounded by some clypeate ectostroma. *Ascomata* immersed in wood, depressed globose, 0.4–0.8 mm diam, 0.25–0.5 mm high; peridium consisting of a dark brown, 15–40 μ m thick pseudoparenchymatous outer layer and a narrow hyaline to yellowish hyphal inner layer. *Paraphyses* apically free, simple, 3–4 μ m wide, attenuated to pointed at the apices. *Asci* (166–)175–228(–241) \times (11.5–)12.3–16.8(–21.5) μ m ($n = 20$), cylindrical, with short stipe, thick-walled, appearing bitunicate and sometimes fissitunicate, containing (4–)8 uniseriate ascospores, apex thickened, with a small but distinct ocular chamber and a minute thin amyloid subapical ring (3.2–)3.3–4.1(–4.3) μ m wide, (0.4–)0.5–0.9(–1.2) μ m high ($n = 24$), turning pinkish in Congo Red and blue in Waterman black ink. *Ascospores* (21–)24.5–31.3(–35.7) \times (8.3–)9.0–11.2(–13.5) μ m, l/w (2.1–)2.4–3.1(–4) ($n = 117$), oblong to ellipsoid, straight, rarely curved, light to yellow- or medium brown, with a central scarcely constricted euseptum and 2–4(–6) distosepta, i.e. 3–5(–7)-distoseptate, thick-walled, multiguttulate, when young with a thick sheath or small hyaline terminal caps visible in water and India ink but not stained by Waterman black ink nor aqueous nigrosin; sides sometimes pinched; occasionally with an oblique longitudinal septum; turning olive, sometimes with yellow contents in Lugol.

Culture characteristics — Growth on CMD and MEA slow, colony radius 27–37 mm after 1 mo at 20 °C; colony white, turning yellow-brown to black from the centre, odour lacking.

Ecology — On mostly decorticated branches of *Sambucus nigra* lying on the ground, sometimes submerged in aquatic habitats.

Distribution — Europe (England, France, Germany).

Additional material examined. ENGLAND, Buckinghamshire, High Wycombe, Hughenden Manor grounds (National Trust), grid reference SU 860 955, on *Sambucus nigra*, 30 Mar. 2013, P. Thompson (WU 33557, culture RS5); East Cornwall, between Liskeard and Callington, Gang, UK grid reference SX307681 (N50°29'17" W4°23'17"), on *Sambucus nigra*, 9 Mar. 2013, K. Preston-Mafham, comm. P. Cannon. — FRANCE, Ariège, Castelnau-Durban, Artillac stream, down-stream from the marble quarry, elev. 410 m, on a submerged decorticated branch of *Sambucus nigra*, 17 Aug. 2015, J. Fournier JF15060; Rimont, La Maille, elev. 550 m, on a submerged decorticated branch of *Sambucus nigra*, soc. *Melanomma fusciculatum*, *Aquaticola* spp., 2 Apr. 2013, J. Fournier JF13064 (WU 33558, culture RS6); same area, La Maille brook, elev. 550 m, submerged decorticated branch of *Sambucus nigra*, 2 Oct. 2013, J. Fournier JF13177. — GERMANY, Mecklenburg-Vorpommern, Westmecklenburg, S from Rehna, forest 'Benziner Tannen', on *Sambucus nigra*, 15 July 2012, T. Richter, comm. H.-O. Baral and G. Friebe (WU 33559).

Notes — Unlike *Lepteutypa fuckelii*, where perithecia are immersed in bark, *L. sambuci* forms its ascomata immersed in the wood, resembling in this respect *L. hederæ*, which differs by consistently 3-septate ascospores lacking a median euseptum and by inamyloid ascus apices.

Lepteutypa uniseptata (K.M. Tsui *et al.*) Jaklitsch & Voglmayr, *comb. nov.* — MycoBank MB814830

Basionym. *Clypeosphaeria uniseptata* K.M. Tsui *et al.*, Mycologia 93: 1004. 2001.

Notes — All morphological criteria of *L. uniseptata* used in the protologue to justify its affiliation to the genus *Clypeosphaeria* such as the presence of a clypeus, long cylindrical asci with subapical, amyloid rings and uniseriate, ellipsoidal, brown ascospores fit to *Lepteutypa*, which was not considered. Particularly differences from the generic type *Clypeosphaeria mamillana*, such as a discoid apical ring in *C. uniseptata* (vs wedge-shaped in *C. mamillana*), thick-walled ascospores in *C. uniseptata*, but also the absence of an asexual morph are all typical of *Lepteutypa*. The shape or structure of the apical discharge apparatus in the ascus appears to be genus-specific in certain groups of the *Xylariales* (see e.g. Jaklitsch *et al.* 2014). Thus, the only difference to other species of *Lepteutypa* is ascospore septation, which can be regarded as negligible when considering the variable septation among other species of *Lepteutypa* and the clear phylogenetic affiliation of *L. uniseptata* to *L. fuckelii*.

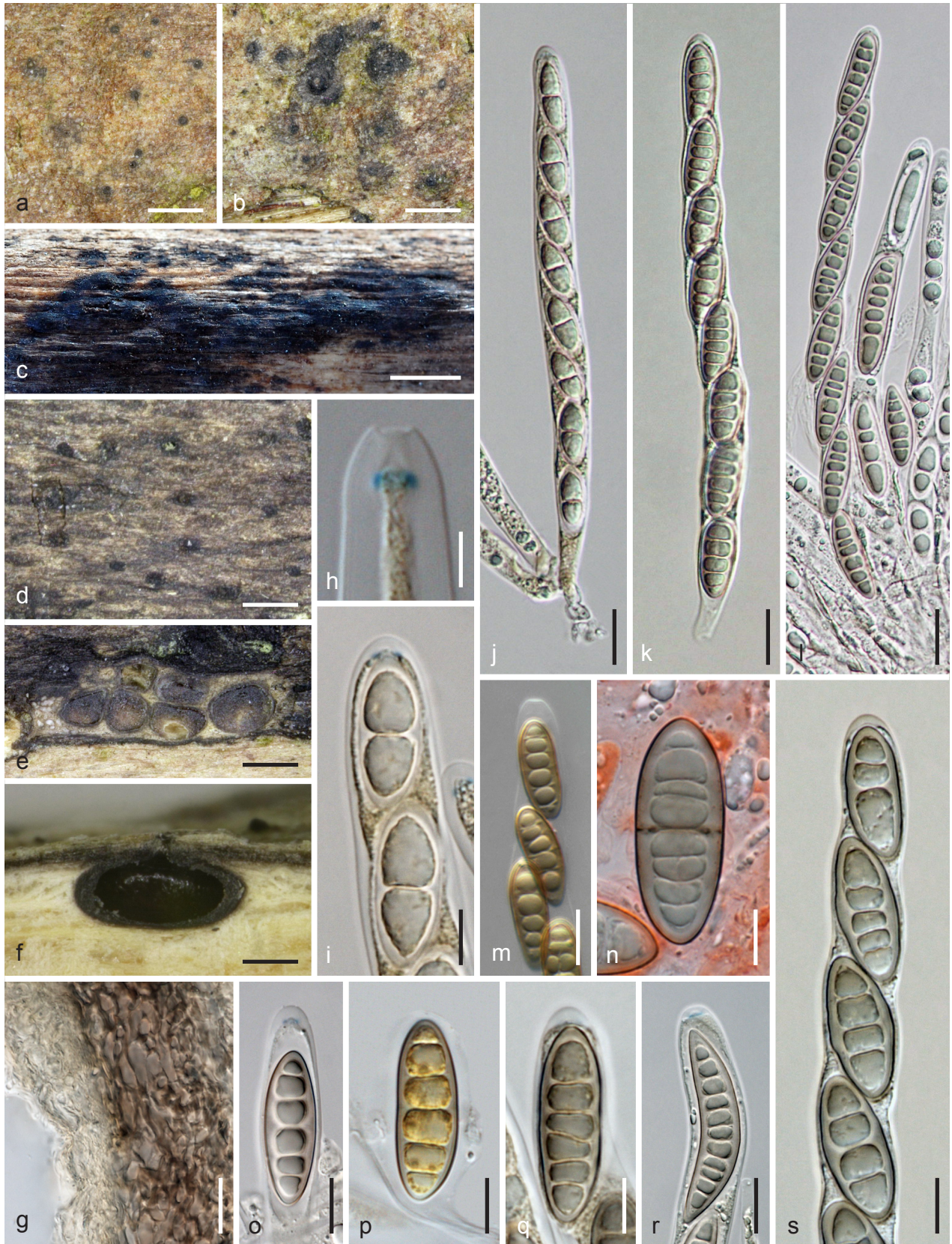


Fig. 4 *Lepteutypa sambuci*. a, b. Ostioles and clypei on the bark surface; c, d. stromata in face view in wood; e. stroma and ascomata in transverse section; f. ascoma in vertical section; g. ascomatal wall in section; h, i, m, s. ascus apices (h, i, s. in Lugol; h, i. immature); j–l. asci (j. immature, in Lugol; l. in 3 % KOH); n–r. ascospores (n. in Congo Red; o, r. in Lugol/KOH; p, q. in Lugol) (a, b, g, n: WU 33556 RS; c, h, p: WU 33559 (c. image by T. Richter); d, e, l, o, r: WU 33558; f, i–k, q, s: WU 33557; m: East Cornwall (k. image by P. Cannon)). — Scale bars: a, b, d, e = 0.5 mm; c = 2 mm; f = 0.2 mm; g, j–m, r = 15 µm; h = 3 µm; i, n, p, q = 7 µm; o, s = 10 µm.

Beltraniaceae Nann. 1934

Beltraniella carolinensis (M.E. Barr & Hodges) Jaklitsch & Voglmayr, *comb. nov.* — MycoBank MB814945

Basionym. *Pseudomassaria carolinensis* M.E. Barr & Hodges, *Mycologia* 63: 562. 1971.

Notes — *Pseudomassaria carolinensis* is phylogenetically distinct from *P. chondrospora* but contained within the highly supported *Beltraniella* clade (Fig. 1, as *Beltraniella carolinensis*). Hodges & Barr (1971) obtained a *Beltraniella* asexual morph in pure cultures of *Pseudomassaria carolinensis*, which they tentatively attributed to *B. portoricensis* (F. Stevens) Piroz. & S.D. Patil. However, they already raised serious doubts about conspecificity due to numerous differences, i.e. smooth setae (verrucose in *B. portoricensis*; see also key in Castañeda Ruiz et al. 1996); frequent production of ascomata in nature as well

as pure cultures (unknown in *B. portoricensis* and any other *Beltraniella* species); high host specificity, being constantly associated with ascomata of *Phyllachora perseae* in circular necrotic spots on living or recently shed leaves of *Persea borboni* (*B. portoricensis* being a common leaf litter fungus with low host specificity, widespread in tropical to mild temperate areas); and culture characteristics distinctly different from isolates of *B. portoricensis* obtained from leaf litter. Only an LSU but no ITS sequence is deposited for *P. carolinensis* at GenBank, but at the NBRC (Biological Resource Center, NITE, Japan, <http://www.nbrc.nite.go.jp/>) an ITS sequence is available for the authentic (likely ex-type) strain IFO 9502 (= NBRC 9502). This ITS sequence differs from all available sequences of *B. portoricensis* deposited at GenBank (GU905993, KJ512150) and NBRC. Considering the molecular, morphological as well as ecological differences, *Pseudomassaria carolinensis* is considered a distinct species and here combined in *Beltraniella*.

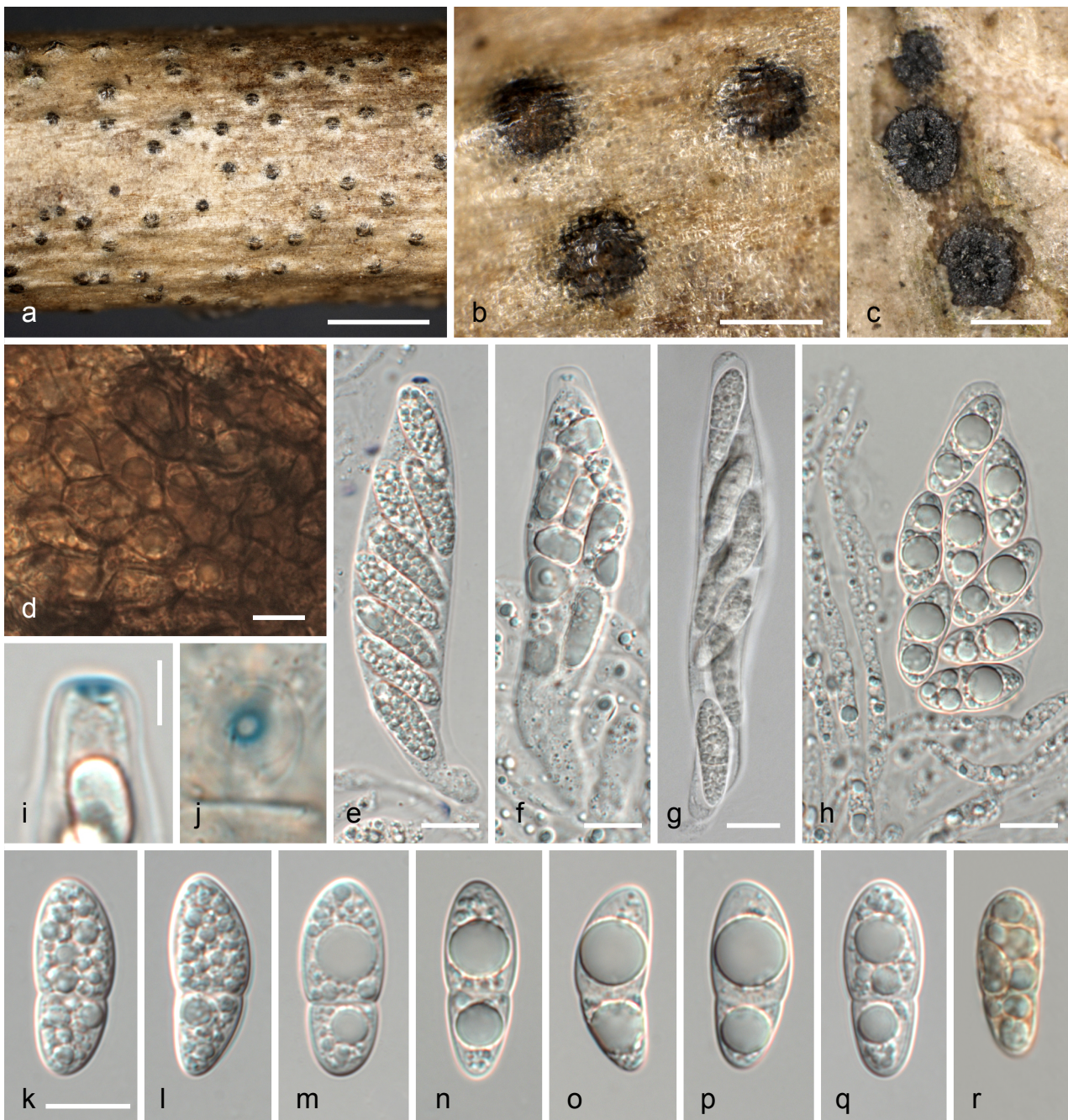


Fig. 5 *Pseudapiospora corni*. a, b. Ascomata in face view, showing the distinct clypeus; c. black ascomata exposed by epidermis cracks; d. perithecial wall; e–g. immature asci (e. in 3% KOH + Lugol; f, g. in 3% KOH); h. mature ascus; i, j. ascus apices in side (i) and face (j) view (in Lugol); k–r. ascospores (r. in Lugol) (a–f, h–r: WU 36852; g: WU 36853). — Scale bars: a = 1 mm; b, c = 0.2 mm; d–r = 10 μ m.

Pseudomassariaceae Senan. & K.D. Hyde 2015***Pseudapiospora corni*** (Sowerby) Petr., Hedwigia 68: 233. 1928 — Fig. 5

Basionym. *Sphaeria corni* Sowerby, Col. Fig. Engl. Fung. Mushr. (London) 3, 25: pl. 370. 1802.

≡ *Pseudomassaria corni* (Sowerby) Arx, Ber. Schweiz. Bot. Ges. 62: 349. 1952.

For additional synonyms see Barr (1964).

Typification. *Neotype*, here designated: AUSTRIA, Vienna, 3rd district, Botanical Garden of the University, in bark of *Cornus alba* cv. *elegantissima*, 21 Aug. 2015, H. Voglmayr (WU 36852; MBT 202954; ex-neotype culture PCO = CBS 140736).

Ascomata perithecial, scattered, immersed below rounded, distinct, greyish brown to blackish clypei in slightly elevated epidermis of the host, depressed globose, 170–250 µm wide, corresponding to the width of the clypeus, black. *Peridium* 10–20 µm wide at the base, thickened up to 50 µm toward the apex, of dark brown pseudoparenchymatous cells 5–22 µm diam. *Hamathecium* of apically free, sparsely branched paraphyses embedded in gel, distinct in water, indistinct in 3 % KOH, 1.5–6 µm wide. *Asci* in water (60–)65–88(–94) × (17–)18–21(–23) µm (n = 12), broadly fusoid, unitunicate, unstable when fresh, disintegrated by pressure, clavate, with 8 irregularly biserial ascospores and short narrow stipe; apex rounded to attenuated, thickened to c. 1.5 µm, containing an amyloid ring 2.5–3.7 × c. 1 µm, indistinct in water, distinct in 3 % KOH. *Ascospores* (17.5–)20–23.5(–25.5) × (6.5–)7.5–9.0(–9.5) µm, l/w (2.1–)2.4–2.9(–3.3) (n = 72), broadly ellipsoid to clavate, with rounded ends, apiosporous with the septum at or above the lower third of the ascospore, small lower cell (7–)8–10(–11) µm (n = 25) long; straight or curved, thick-walled, smooth; contents of vital spores multiguttulate, commonly with a large and several smaller guttules per cell.

Colonies on MEA and CMD first hyaline to pure white, becoming dark olive grey with age, aerial mycelium cottony on MEA, scant on CMD; reverse first dull whitish, becoming black with age; growth radius at 22 °C after 6 wk to c. 60 mm on CMD, to c. 43 mm on MEA. *Ascomata* produced on MEA after c. 1 mo, (160–)190–400(–550) µm wide. *Asci* in 3 % KOH (83–)85–101(–108) × (14–)14.3–16.7(–17.5) µm (n = 7), oblong to fusoid. *Ascospores* in 3 % KOH (15.5–)19.3–24.5(–26) × (5.3–)6.0–7.2 µm, l/w (2.8–)3.1–3.6(–4) (n = 13), similar to, but slightly smaller than, those from ascomata on the natural substrate, with a distinct gelatinous sheath in the ascus. No asexual morph observed.

Habitat — In bark of *Cornus alba* and *C. sericea*.

Distribution — Europe, North America.

Additional material examined. AUSTRIA, Kärnten, Griffen, parking lot of Mochoritsch Griffen-Rast, in bark of *Cornus alba*, 3 Nov. 2015, H. Voglmayr & W. Jaklitsch (WU 36855); Oberösterreich, St. Willibald, communal tennis court, in bark of *Cornus alba* cv. *elegantissima*, 30 Aug. 2015, H. Voglmayr (WU 36854). — FRANCE, 21, Til-Châtel, Le Tertre, 19 Aug. 2015, A. Gardiennet AG15055 (WU 36853, culture PCO1).

Notes — Sowerby (1802) described and illustrated *Sphaeria corni*, the basionym, from *Cornus suecica*. No type material is extant in K (B. Auguirre-Hudson, pers. comm.), where the Sowerby collection is maintained after transfer from BM, and the original illustration is insufficient to serve as lectotype. No specimens from the type host are known to us, but in the lack of a type specimen we consider it desirable to propose a neotype from *Cornus alba* to maintain the species concept in its current use, in accordance with earlier detailed descriptions (e.g. Petrak 1925, Müller & Von Arx 1962, Barr 1964, Corlett 1978, 1981). All these descriptions were based on collections from *Cornus alba* or the closely related *C. sericea*.

Pseudapiospora corni typically occurs on *Cornus alba* on which it is common. We have not seen it on *C. sanguinea*, and we are not aware of any confirmed records from that host. Senanayake et al. (2015) alleged to treat this fungus under the name *Pseudomassaria corni*. Based on a specimen collected by E. Camporesi from *Cornus sanguinea* in Italy, they ignored all earlier detailed descriptions (see above), and made a description and illustration of an immature ascomycete with unicellular ascospores. Apparently this specimen also contains *Pseudomassariella vexata*, because the ITS sequence (KR092791) obtained from this specimen and deposited by Senanayake et al. (2015) in GenBank represents *Pseudomassariella vexata*. Apart from few obvious sequencing errors at the very beginning and the end, the sequence is identical with the *P. vexata* ex-epitype sequence JF440977 published by Jaklitsch & Voglmayr (2012). At last they defined this specimen even as ‘reference specimen of *Pseudomassaria corni*’, which, however, has no formal status as it is not governed by the ICN.

Pseudomassariella vexata (Sacc.) Petr., Sydowia 9: 603. 1955

Basionym. *Didymella vexata* Sacc., Michelia 2 (no. 6): 58. 1880.

≡ *Leiosphaerella vexata* (Sacc.) E. Müll., in Müller & Von Arx, Beitr. Kryptogamenfl. Schweiz 11 (no. 2): 674. 1962.

Typification. *Holotype* of *Didymella vexata*: FRANCE, Rouen, Quevilly, on corticated twigs of *Cornus sanguinea*, J.B.P. Letendre (PAD). *Epitype*, here designated: AUSTRIA, Vienna, 3rd district, Botanical Garden of the University, on corticated twigs of *Cornus sanguinea*, 9 Jan. 2011, H. Voglmayr (WU 31333, ex-epitype culture CBS 129022 = LVE; MBT203100; ITS-LSU sequence JF440977).

Notes — When Fuckel (1871) combined *Sphaeria oblitescens* in *Didymosphaeria*, he gave a description of a specimen of his own, which corresponds to *P. vexata*. However, the type of *Sphaeria oblitescens* represents a true *Didymosphaeria* (Scheinpflug 1958). Fuckel (1871) noticed differences in the description and illustration from the original fungus, but ascribed this to the “younger state of the fungus in his specimen”. Saccardo (1880) received French material from J.B.P. Letendre, noticed that it conforms to Fuckel’s fungus and described it as *Didymella vexata*. In the *Didymella* folder in PAD there are two specimens labelled *D. vexata*, one collected by Krieger, and a second specimen without any collection data on the specimen which we identify as the holotype. The latter contains a short hand-written Latin description by Saccardo, a drawing of perithecium, asci and ascospores labelled with size ranges identical to those given in the original description, and several small corticated twig fragments. However, the material is scant and not sent out on loan, therefore we epitypify the name with a recently collected specimen which was illustrated in Jaklitsch & Voglmayr (2012) and for which a culture and sequences are available. See Jaklitsch & Voglmayr (2012) for a detailed description and illustration. Placement of *Pseudomassariella* in *Pseudomassariaceae* receives no bootstrap support (Fig. 1), familial affiliation is therefore provisional.

Requienellaceae Boise 1986, emend.

Type genus. *Requienella* Fabre. Other genus in the family: *Acrocordiella* O.E. Erikss.

Ascomata immersed or erumpent, subglobose; ostiolar necks inconspicuous or massive and strongly erumpent, black; extra-ascomatal tissue present. *Hamathecium* comprising two types of apically free paraphyses differing in length and width. *Asci* bitunicate, fissitunicate, cylindrical, subfusiform to narrowly clavate, with thick-walled apex, wide ocular chamber comprising a slightly refractive, inversely funnel-shaped dome turning slightly reddish in Congo Red, containing 8 uni- to biserially ar-

ranged ascospores. *Ascospores* ellipsoid to oblong, olivaceous or brown, sometimes with lighter ends, with several transverse distosepta and large lumina.

Acrocordiella O.E. Erikss., Mycotaxon 15: 189. 1982

Type species. Acrocordiella occulta (Romell) O.E. Erikss.

Acrocordiella was described by Eriksson (1982) for the single species *Massaria occulta*, compared by him with *Acrocordia* and *Pyrenula* and assigned to the *Pyrenulaceae*. Later Boise (1986) and Barr (1990b) treated the genus as a synonym of *Requienella*. Barr (pers. comm., Jan. 2001) concluded that the genus is “quite separate from *Requienella*”, upon examination of a specimen (W.J. 1537) collected by the senior author in Austria. In order to test this hypothesis, fresh material of this fungus and of *Requienella* species were recollected, cultured and sequenced. Phylogenetic analyses as well as morphological re-investigations confirmed *Acrocordiella* to represent a distinct genus closely related to *Requienella* (see below).

Acrocordiella occulta (Romell) O.E. Erikss., Mycotaxon 15: 189. 1982 — Fig. 6

Basionym. Massaria occulta Romell, Hedwigia 24: 262. 1885.

≡ *Hymenopleella occulta* (Romell) Shoemaker & Leclair, Canad. J. Bot. 53: 1587. 1975.

≡ *Pseudovalsa occulta* (Romell) Berl., Icon. Fungorum (Abellini) 1, 1: t. 34, f. 3. 1890.

Lectotype, here designated: SWEDEN, Närke, Kumla, on twigs of *Ribes grossularia*, 1885, L. Romell, in *Winter, Fungi Eur. Extraeur. Exs.* 3354 (S, MBT202955). *Epitype*, here designated: AUSTRIA, Osttirol, Virgental, Prägraten, Umbalfälle, elev. 1420 m, on dead twigs of *Ribes petraeum* attached to the shrubs, 17 June 2015, H. Voglmayr & W. Jaklitsch (WU 33551; MBT202956; ex-epitype culture RS9 = CBS 140500).

Ascomata virtually invisible on the unchanged or sometimes slightly lifted bark, but on the surface often indicated by small white spots 120–300 µm diam around ostiolar openings or independent from them; sometimes, particularly with overmature ascomata, by circular black, non-projecting 50–125 µm wide ostiolar openings with a sunken minute circular perforation. *Ascomata* immersed in bark, singly or in small groups, within the bark often surrounded by white mycelium of hyaline 2–4 µm wide hyphae, depressed globose to ellipsoid, black, 400–800 µm diam, c. 300–500 µm high. *Ostioles* containing terminally 1–2.5 µm wide paraphyses. Peridium 20–40 µm thick, comprising a *textura angularis* of small thick-walled angular cells (2.5–)3.0–7.5(–12.5) µm (n = 32) diam. *Hamathecium* of apically free, scarcely branched, 2–5 µm wide regular paraphyses, sometimes with basal cells inflated to 7 µm, and numerous, variously curved, 1–2.5(–3) µm wide elongated paraphyses in a gel matrix. *Asci* emerging from the base and sides of the ascoma nearly up to the ostiole, (150–)160–183(–191) × (11.5–)12–16.5(–21.7) µm (n = 23), cylindrical, attenuated toward the apex, containing 8 (obliquely) uniseriate ascospores, not obviously fissitunicate, thin-walled; apex attenuated and distinctly thickened, containing a slightly refractive, inversely funnel-shaped canal 4–5.5 µm high, 3–5.7 µm diam, extending up to 11 µm in 3% KOH, staining blue in aqueous Cotton Blue and faintly reddish in Congo Red; base simple or knob-like. *Ascospores* (16.5–)20–24.3(–27.7) × (6.8–)8.3–10(–11) µm, l/w (1.8–)2.2–2.7(–3.2) (n = 70), ellipsoid, ends narrowly rounded to nearly acute, straight to slightly curved, olivaceous, greyish olive when young, dark brown when dead, 3-distoseptate, lumina rhomboid to square-shaped, central ones slightly larger than terminal ones, multiguttulate, sides often slightly pinched, smooth, without sheath; in KOH more angular and eventually terminal distosepta disappearing; darkening in Lugol; turning pale brown in Cotton Blue/lactic acid.

Culture characteristics — Growth slow; decreased temperatures (15–22 °C) required; colonies white. No asexual morph observed.

Habitat — In bark of *Ribes* spp.

Distribution — Central, Eastern and Northern Europe (Austria, Russia, Sweden).

Additional material examined. AUSTRIA, Osttirol, Virgental, Prägraten, Umbalfälle, elev. 1450 m, on dead twigs of *Ribes petraeum*, 17 June 2015, W. Jaklitsch & H. Voglmayr (WU 33552, culture RS10 = CBS 140501); *ibid.*, 28 Aug. 2000, W. Jaklitsch W.J. 1537 (WU 33550). — SWEDEN, Närke, Kumla, on *Ribes grossularia*; 29 June 1889, L. Romell, *Fungi exs. praes. scand.* 73 (GZU).

Notes — As the epithet implies, *A. occulta* is an inconspicuous fungus, well hidden in the bark. This character, a simpler ascus apex, a different ascospore anatomy, different ecology and the results of phylogenetic analyses clearly demonstrate that *Acrocordiella* is not congeneric with *Requienella*. Previously only known from *Ribes uva-crispa* (= *R. grossularia*) in Scandinavia and from *Ribes nigrum* in Russia, it was also collected in Austria in 2000 (Hausknecht et al. 2003), but not cultured at that time. Cultures were prepared from specimens collected recently in the same area.

Requienella Fabre, Ann. Sci. Nat., Bot., sér. 6, 15: 55. 1883

= *Trematomyces* Schrantz, Bull. Soc. Mycol. France 76: 324. 1961.

Type species. Requienella seminuda (Pers.) Boise.

Boise (1986) described the family *Requienellaceae* for *Requienella* Fabre in the *Dothideomycetes* (as *Loculoascomycetes*). She lectotypified *Requienella* with *R. olearum*, determined its earliest epithet as *Sphaeria seminuda* Pers. 1801 and stated that the three other species recognised by Fabre (1883) in *Requienella* belonged to other genera. The family *Requienellaceae* was not accepted by Eriksson (in Eriksson & Hawksworth 1986) and he maintained *Requienella* in the *Pyrenulaceae*. He also supposed that the ‘non-branched pseudoparaphyses’ are true paraphyses, as in *Pyrenula*. Barr (1990b) listed the *Requienellaceae* as a family of her order *Melanommatales*. Aptroot (1991) accepted Barr’s system, treated the *Pyrenulales* as synonym of the *Melanommatales* and added five genera of lichenised fungi to the non-lichenised *Requienella* in the *Requienellaceae*. Harris (1995) considered to accept the *Requienellaceae* but being only restricted to the single genus *Requienella*. Kirk et al. (2008) listed the *Requienellaceae* as a family of the *Pyrenulales*. Here we show that *Requienella* surprisingly belongs to the *Xylariales*, despite its fissitunicate asci.

Requienella seminuda (Pers.) Boise, Mycologia 78: 38. 1986 — Fig. 7

Basionym. Sphaeria seminuda Pers., Syn. Meth. Fung. (Göttingen) 1: 70. 1801.

= *Sphaeria olearum* Castagne, Cat. Pl. Marseille: 116. 1845 [non *Sphaeria olearum* De Not., 1845, nom. illegit., art. 53.1].

≡ *Caryospora olearum* (Castagne) Sacc., Syll. Fung. (Abellini) 2: 118. 1883.

≡ *Requienella olearum* (Castagne) Fabre, Ann. Sci. Nat., Bot., sér. 6, 15: 1883.

≡ *Trematosphaeria olearum* (Castagne) Sacc., Syll. Fung. (Abellini) 2: 118. 1883.

≡ *Trematomyces olearum* (Castagne) Schrantz, Bull. Trimestriel Soc. Mycol. France 76: 323. 1961.

Typification. *Lectotype* of *Sphaeria seminuda* designated by Boise (1986): ?FRANCE, Herb. Persoon L0113128 (= 910269-31, L!). *Epitype*, here designated: GREECE, Crete, Rethymno, Armeni, on bark of *Olea europaea*, 9 June 2015, H. Voglmayr & W. Jaklitsch (WU 33568; MBT 202957; ex-epitype culture RS12 = CBS 140502).



Fig. 6 *Acrocordiella occulta*. a, b. Ostioles and white spots on the bark surface; c. ascoma in vertical section; d. ascomata in transverse section; e. ascomatal wall in section; f, g. asci; h. ascus apex in aqueous Cotton Blue; i. paraphysis between young asci; j. elongated paraphysis in aqueous Cotton Blue; k–s. ascospores (k, n. in 3 % KOH; o, p. dead, in water; q. in Lugol; r. in Cotton Blue/lactic acid; s. in Congo Red) (a, k: GZU; b–j, l–s: WU 33551). — Scale bars: a, d = 0.5 mm; b = 0.8 mm; c = 150 μ m; e, i, q = 10 μ m; f, g = 15 μ m; h, j–p, r, s = 7 μ m.

Ascomata solitary or aggregated in groups of 2–5, perithecioid, conical with rounded base or more or less globose with a prominent apex, immersed, large, (0.35–)0.45–0.9(–1.1) mm diam, 0.6–1.2 mm high, often height exceeding the diam, often surrounded by whitish, greyish to black matter. *Ostiole* erumpent, massive, papillate to conical, shiny black, apex typically 25–160 μ m wide, round, blunt to pointed, sometimes flattened and 90–300 μ m diam. *Peridium* 15–40 μ m wide at the base, thickened to 160 μ m in upper regions, dark brown, consisting of minute thick-walled angular cells. *Hamathecium* consisting of 2–5 μ m wide, apically free paraphyses similarly long as the asci, and numerous long, not or scarcely branched,

1–2.5 wide, apically free elongated paraphyses (‘pseudo-trabeculae’) nearly reaching the ostiolum, and periphyses of similar width in the ostiolum, all immersed in a gel matrix. *Asci* (148–)158–178(–182) \times (21.7–)23.5–29(–32.5) μ m (n = 13), bitunicate, fissitunicate, oblong to subfusiform, with thick-walled apex, wide ocular chamber comprising a slightly refractive, inversely funnel-shaped dome 5.5–7 μ m high, 6.5–7.7 μ m wide at the base, turning slightly reddish in Congo Red, demarcated by a basal plate, with short stipe and simple to knob-shaped base, containing 8 uni-, in the middle often biserially arranged ascospores. *Ascospores* (25.3–)28.3–32.7(–37) \times (9.8–)10.8–12.7(–13.3) μ m, l/w (2.2–)2.3–2.9(–3.7) (n = 50), first hyaline,

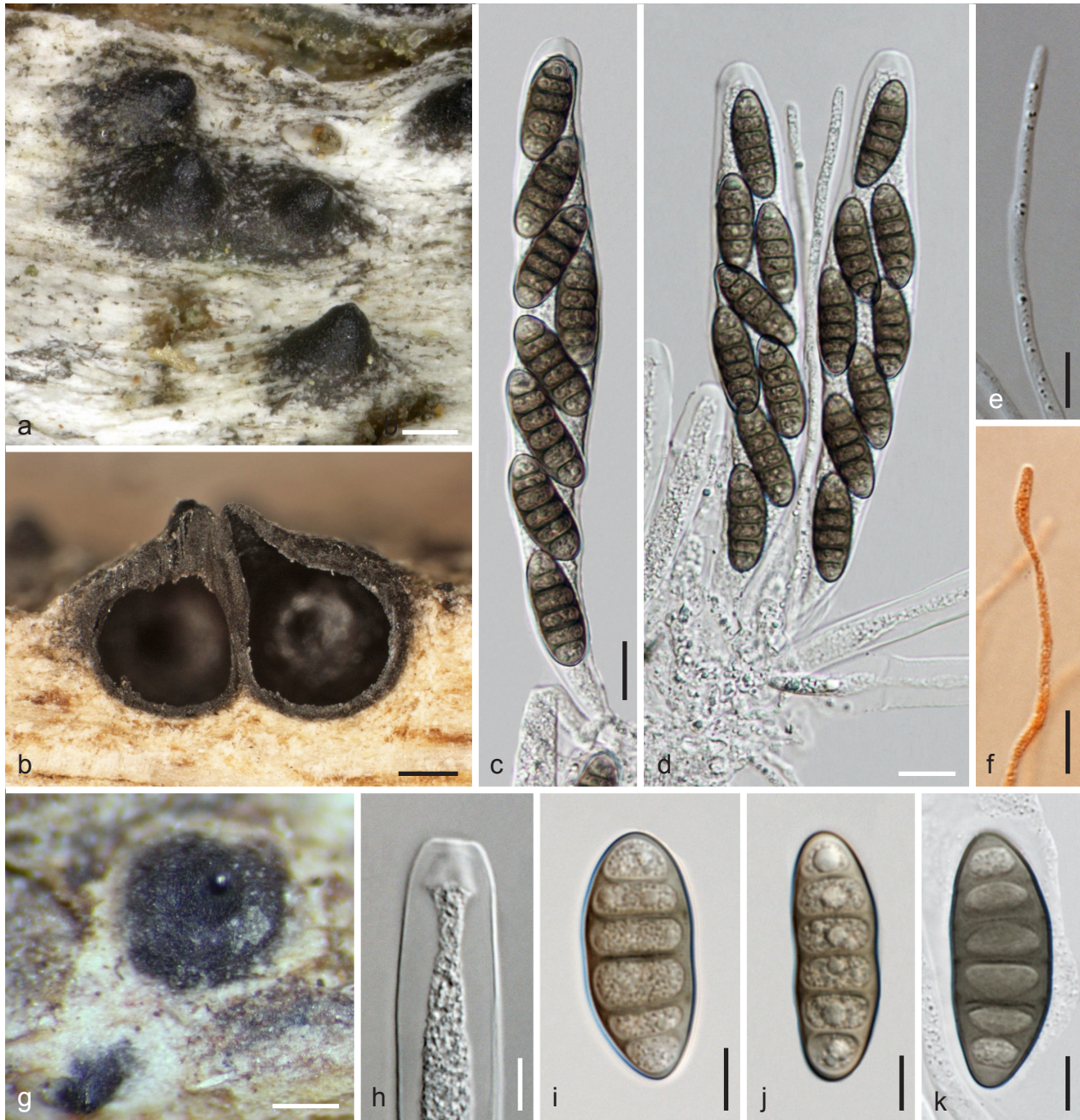


Fig. 7 *Requienella seminuda*. a, g. Ascomata in face view; b. ascomata in vertical section; c, d. asci (note apically free paraphyses in d); e. apically free paraphysis; f. free apex of elongated paraphysis (in Congo Red); h. ascus apex; i–k. ascospores (a, c, f, h, j; WU 33569; b, i; WU 33567; d, e, k; WU 33568; g: lectotype L0113128). — Scale bars: a, b, g = 0.2 mm; c, d = 15 μ m; e, h–k = 7 μ m; f = 10 μ m.

1-celled, inequilateral, developing 1–3 septa and turning brown with slightly paler end cells, becoming (3–)5(–7)-distoseptate, ellipsoid, with the width lumina exceeding their length, turning darker olivaceous in KOH and lumina becoming smaller and more angular.

Culture characteristics — Growth of cultures extremely slow (few mm per month), only somewhat enhanced by overlay of sterile water; colonies white. No asexual morph observed.

Habitat — In dead bark, less commonly wood of living trunks of old *Olea europaea* trees.

Distribution — Southern and Western Europe (France, Greece, Italy).

Additional material examined (all from bark of *Olea europaea*). GREECE, Crete, Chania, Platanias, Pananiana, 4 June 2015, H. Voglmayr & W. Jaklitsch (WU 33566); Rethymno, Ambelaki, 9 June 2015, W. Jaklitsch & H. Voglmayr (WU 33567, culture RS11); Vizari, 9 June 2015, W. Jaklitsch & H. Voglmayr (WU 33569, culture RS13).

Notes — *Requienella seminuda* is a peculiar fungus. Its distinctly fissitunicate asci have prevented a placement outside groups of ascomycetes with bitunicate asci. The hamathecium has never been studied in detail resulting in controversial reports: Barr (1990b) found narrow, scarcely branched trabeculae, whereas Eriksson (in Eriksson & Hawksworth 1986) anticipated that the ‘non-branched pseudoparaphyses’ are probably true paraphyses. Peculiar is the fact that three kinds of threads are present, a mass of numerous long and extremely narrow hyphae with free ends extending to the upper part of the ascoma (‘pseudo-trabeculae’), wider ‘normal’ paraphyses between asci, best seen among immature asci, and paraphyses in the ostiole. It is difficult to determine the nature of the entire hamathecium. As a matter of fact, all threads appear to have free ends, which suggests that some paraphyses are strongly elongated and taper upwards forming long straight ‘pseudo-trabeculae’ at upper levels of the ascoma. In any case, the presence of true paraphyses is in line with other *Sordariomycetes*, as are the

sequences of the phylogenetic markers used here. According to Fabre (1883) and Saccardo (1883) ascospores of *R. seminuda* are 5- or more-septate. We found only rarely a number of septa deviating from five.

Nomenclatural background: *Sphaeria olearum* was based on a specimen collected by Desmazières. Boise (1986), upon examination of an ?isotype of this material from NY and of Persoon's type material of *Sphaeria seminuda* from Leiden, determined that they represent the same species, that *S. seminuda* is older than *S. olearum* and chose Persoon's material as lectotype. She also illustrated regularly 5-distoseptate ascospores for Persoon's material L0113128 (= 910269-31, L!). Later Aptroot (1991) examined the original type material of *Sphaeria olearum* (France, Bouches-du-Rhône, Desmazières 1767) present in G and confirmed conspecificity of the two taxa. We examined and illustrate ascomata of the lectotype of *R. seminuda*. As Boise

(1986) illustrated 5-distoseptate ascospores for the lectotype, we conclude that Persoon's material, like Desmazières's original material, originates from *Olea europaea*, most probably from France. We epitypify *S. seminuda* with material from *Olea*, due to an earlier mix-up of *R. seminuda* by several authors with *Acrocordiella occulta* and *Requienella fraxini* described below.

***Requienella fraxini* Jaklitsch & Voglmayr, sp. nov.** — MycoBank MB814828; Fig. 8

Etymology. Referring to its occurrence on *Fraxinus*.

Holotype. NORWAY, Akershus, Bærum kommune, Jonsrudtjern, UTM 32: 0580011/6649407, at the steep slope of the small lake, soc. *Navicella pileata*, 18 Sept. 2012, B. Norden (WU 33561, ex-type culture RS3 = CBS 140475).

Ascomata perithecioid, immersed, with the ostium, often including an upper part of the ascoma, erumpent to 0.2–0.9 mm



Fig. 8 *Requienella fraxini*. a–d. Ascomata in face and lateral views; e. ascoma in vertical section (note wall thickening in ostiolar region); f. hamathecium in the upper ascomatal region; g. young asci with paraphyses; h. free apical ends of paraphyses; i, v. asci (i in Lugol; note fissitunicate dehiscence in v); j–l. ascus apices (k. in Lugol + Congo Red; l. in Lugol); m–u. ascospores (m, n. immature; o–q. vital) (a, b: WU 33560; c, d: WU 33564; e–i, k, n, s–v: WU 33561; j, l: WU31483; m, o–q: WU 33565; r: WU31482). — Scale bars: a–d = 0.5 mm; e = 0.3 mm; f, i, v = 25 µm; g = 50 µm; h, j, l–t = 10 µm; k, u = 15 µm.

above the host surface, solitary or aggregated in small numbers, 0.5–1.1 mm high, 0.45–1 mm diam, conical with rounded base or more or less globose with a prominent, conical, more or less acute, shiny black, apically 26–160 µm wide papilla, circular in transverse section, black; often surrounded by white amorphous tissue containing some hyaline 2–6 µm wide hyphae; tissue sometimes turning black by ejected ascospores. *Peridium* 15–30 µm wide at the base, thickened to 150 µm and hard in upper regions, dark brown, consisting of small pseudoparenchymatous cells. *Hamathecium* complex, consisting of 2–5 µm wide, apically free paraphyses containing oil drops when vital, and similarly long as the asci, superposed by masses of long, sparsely branched, 1–2.5 wide, apically free ‘pseudo-trabeculae’ nearly reaching the ostiolum and variously curved periphyses of same width in the ostiolum, all immersed in a gel matrix. *Asci* 153–206 × 20–30(–33) µm (n = 10), bitunicate, fissitunicate, oblong to narrowly clavate, with thick-walled apex, wide ocular chamber comprising a slightly refractive, inversely funnel-shaped dome 9–11 µm long, 6.5–9.5 µm wide at the base, turning reddish in Congo Red, demarcated by a basal plate, with short simple stipe, containing 8 uni- to biseriately arranged ascospores. *Ascospores* (23.3–)26.7–31.5(–36) × (8.0–)9.5–12(–14.5) µm, l/w (2.1–)2.4–3.1(–3.9) (n = 100), ellipsoid, oblong to fusiform, first hyaline, 1-celled, with narrow sheath, becoming septate and yellow, finally brown with lighter ends, 3(–5)-distoseptate, with large lumina and faintly punctate perispore.

Culture characteristics — Growth of cultures extremely slow, only somewhat enhanced by overlay of sterile water; colonies white. No asexual morph observed.

Habitat — In bark of living trunks of old trees of *Fraxinus excelsior*.

Distribution — Northern and Western Europe (France, Norway, Sweden), probably North America.

Additional material examined (all from bark of *Fraxinus excelsior*). FRANCE, Poitou-Charentes, Le Vanneau, Marais Poitevin, 30 Oct. 2013, A. Gardienet AG13205 (WU 33564 = RS7; culture lost). — NORWAY, Akershus, Bærum kommune, Jonsrudtjern, UTM 32: 0580020/6649407, 18 Sept. 2012, B. Norden (WU 33560, culture RS2); Akershus, Rogaland kommune, Strand, Rag, UTM 32: 26104/55362, 4 Oct. 2012, B. Norden & J.B. Jordal (WU 33563 = RS4); Bærum kommune, Tanumbråtan north, UTM 32: 0582366/6640274, 20 Sept. 2012, B. Norden (WU 33562); Vest-Agder, Kristiansand kommune, Nedre Timenes, 5 Oct. 2014, H. Voglmayr & W. Jaklitsch (WU 33565, culture RS8 = CBS 140476). — SWEDEN, Västra Götaland, Bohuslän, Uddevalla, Ljungskile, 1 Apr. 2001, N. Vassbosjön (WU 31582); Blekinge, Angölsmåla, Olofström, Kyrkhult, 27 Apr. 2002, B. Norden (WU 31583).

Notes — Prior to the recent recollection of *Requienella seminuda* on *Olea europaea* we identified *R. fraxini* as *R. seminuda*, following Boise (1986). However, molecular data clearly separate these two species. Moreover, the description of *R. seminuda* by Boise (1986), Aptroot (1991) and Barr (1990b) as having regularly 3–6-, or 3–7-septate ascospores suggested that the different septations occur at comparable frequencies. This is, however, not the case, as ascospores of *R. seminuda* are regularly 5-septate and those of *R. fraxini* 3-septate. In each species only a very small fraction may have deviant numbers of septa. This is also supported by the description of ascospores for *R. olearum* as 5- or more septate by all authors dealing with the taxon in the 19th century. Distinction criteria other than ascospore septation are different hosts (*Olea* vs *Fraxinus*) and the geographical distribution, *R. fraxini* in northern humid regions, *R. seminuda* in southern mediterranean regions of Europe, with southern France as an overlapping zone. *Requienella fraxini* appears to be confined to old trees in areas of high humidity and is therefore much rarer than its host. It may be in decline and endangered due to ash dieback. Nordén & Jordal (2014) gave an account of *R. fraxini* under the name *R. seminuda*, i.e. before we collected *R. seminuda* on *Olea*.

Sporocadaceae Corda (as ‘*Sporocadeae*’), Icon. Fungorum (Prague) 5: 34. 1842

Type genus. *Sporocadus* Corda, Icon. Fungorum (Prague) 3: 23. 1839. (synonymous with *Seimatosporium* Corda, in Sturm, Deutschl. Fl., Abt. 3, Pilze Deutschl. 3: 79. 1833.)

Hughes (1958) lectotypified *Sporocadus* with *S. lichenicola*, which is currently known as the plurivorous species *Seimatosporium lichenicola*, the asexual morph of *Discostroma corticola* (Shoemaker & Müller 1964), currently being treated as a synonym of *D. fuscellum*.

Hymenopleella Munk, Dansk Bot. Ark. 15: 89. 1953

Type species. *Hymenopleella hippophaëicola* Jaklitsch & Voglmayr.

Ascomata perithecial, immersed in bark, depressed globose. Ostioles periphysate. *Peridium* pseudoparenchymatous, 2-layered. *Hamathecium* of apically free paraphyses. *Asci* cylindrical, with 8 uni- to partially biseriate ascospores, containing a flat, V-shaped to sinuous, amyloid apical ring. *Ascospores* oblong, ellipsoid or fusoid, symmetric, with several eusepta, light yellow- to reddish brown wall and septa more strongly pigmented than contents, smooth, partly turning dull green in Lugol, lacking a sheath. *Asexual morph* monochaetia-like.

Hymenopleella hippophaëicola Jaklitsch & Voglmayr, *nom. nov.* — MycoBank MB814829; Fig. 9

Etymology. Referring to its occurrence on *Hippophaë*.

Replaced synonym. *Sphaeria hippophaës* Sollm., Bot. Zeitung 20: 379. 1862, non *Hymenopleella hippophaës* (Fabre) Rulamort, Bull. Soc. Bot. Centre-Ouest, Nouv. sér. 17: 192. 1986.

≡ *Leptosphaeria hippophaës* (Sollm.) Sacc., Syll. Fung. (Abellini) 22: 222. 1913.

≡ *Lepteutypa hippophaës* (Sollm.) Arx, Gen. Fungi Sporul. Cult. (Lehr): 118. 1970.

≡ *Massaria hippophaës* (Sollm.) Jacz., Bull. Herb. Boissier 2: 684. 1894.

≡ *Hymenopleella sollmannii* Shoemaker & E. Müll., Canad. J. Bot. 43: 1457. nom. inval. Art. 52.1

= *Melanomma hippophaës* Fabre, Ann. Sci. Nat., Bot., sér. 6, 9: 92. 1878.

≡ *Hymenopleella hippophaës* (Fabre) Munk, Dansk Bot. Ark. 15: 90. 1953, nom. inval. Art. 41.5

≡ *Hymenopleella hippophaës* (Fabre) Rulamort, Bull. Soc. Bot. Centre-Ouest, Nouv. sér. 17: 192. 1986.

Typification. No holotype seems to be extant, but there is an authentic specimen present in B, which was collected by the author of the replaced synonym, August Sollmann, two years after his publication. We designate this specimen as *neotype* of *Sphaeria hippophaës*: GERMANY, Coburg, on twigs of *Hippophaë rhamnoides*, 1864, A. Sollmann (B700021868; MBT203103). *Epitype*, here designated: AUSTRIA, Niederösterreich, Gerasdorf, Marchfeldkanalweg, on twigs of *Hippophaë rhamnoides*, 12 Aug. 2012, W. Jaklitsch (WU 32027; MBT202958; ex-epitype culture LH = CBS 140410).

Ascomata perithecial, immersed in bark, scattered or in small groups, 0.2–0.4(–0.5) mm diam, lifting the bark only slightly producing inconspicuous irregular bumps with small black ostiolar dots 30–80 µm diam. *Ostioles* 25–50 µm wide inside, central, short-papillate, periphysate; *peridium* 20–40 µm thick, pseudoparenchymatous, of a thin hyaline inner layer and a dense small-celled dull orange-brown outer *textura angularis*, sometimes surrounded by some whitish, buff to brown hyphal tissue. *Paraphyses* uncommon, simple, rarely branched, 3–5 µm wide. *Asci* (90–)97–126(–134) × (12–)12.5–16(–17) µm (n = 14), cylindrical, with 8 (partly obliquely) uniseriate, rarely more or less biseriate ascospores, with a short stipe; apex thickened to 2 µm (to 3.5 µm when young), containing a flat, V-shaped to sinuous, amyloid apical ring (4.0–)4.5–5.3(–5.5) × (0.7–)0.8–1.2(–1.5) µm (n = 17). *Ascospores* (15.2–)17.5–22.5(–26.5) × (7.2–)8.0–9.0(–9.7) µm, l/w (1.8–)2.1–2.7(–3.3) (n = 100), oblong, ellipsoid or fusoid, symmetric, ends rounded

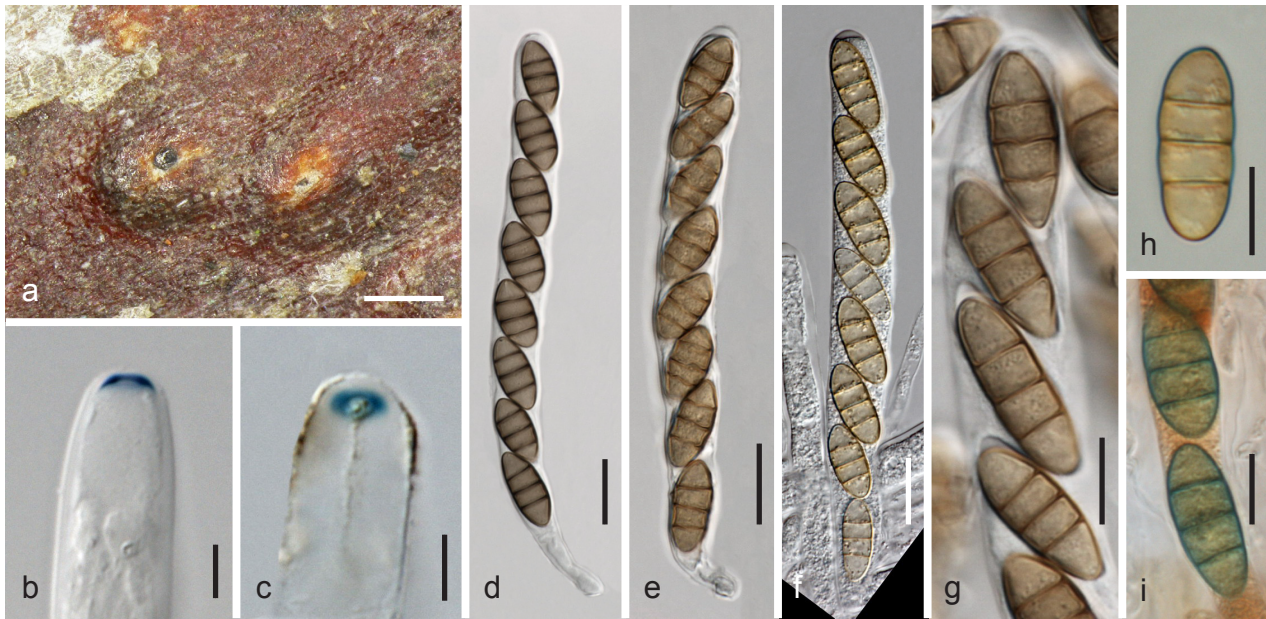


Fig. 9 *Hymenopleella hippophaëicola*. a. Ostioles and bumps on the bark surface; b, c. ascus rings in Lugol; d–f. asci (d, e. in 3% KOH); g–i. ascospores (g. in 3% KOH; i. in Lugol) (a, b, d, e, g: B700021868; c, f, h, i: WU 32027). — Scale bars: a = 0.2 mm; b, c = 5 µm; d–f = 15 µm; g–i = 10 µm.

or attenuated, with 3 non-constricted eusepta, straight or slightly curved, light yellow- to reddish brown, darker brown in KOH, wall and septa more strongly pigmented than contents, smooth, partly turning dull green in Lugol, lacking a sheath.

Culture characteristics — Growth better on MEA than on CMD and better at 15 °C than at room temperature; colony first whitish, turning greyish brown to olive. No asexual morph observed here, but reported by Shoemaker & Müller (1965; under *Hymenopleella sollmannii*) from malt agar: *Conidia* formed in spherical cavities 140–300 µm diam, surrounded by a 15–50 µm thick wall of reddish brown hyphae. *Conidiophores* hyaline, simple, 10–30 × 2–3 µm, 1–2-septate, with fine annellations. *Conidia* fusoid, 20–27 × 6–9 µm, straight or rarely curved, mostly 4-septate, with medium yellow-brown central cells and colourless end cells, apical cell with an acuminate 3–6 µm long appendage sometimes separated by an additional septum, basal cell narrowed to 3 µm wide truncate base usually bearing a central, 2–4 µm long appendage.

Habitat — In bark of *Hippophaë rhamnoides*.

Distribution — Europe.

Additional material examined. AUSTRIA, Vienna, 21st district, Donauinsel, grid square 7764/3, on twigs of *Hippophaë rhamnoides*, 20 June 1999, W. Jaklitsch W.J. 1326 (WU 32027).

Notes — A detailed description of *Hymenopleella hippophaëicola* was given by Petrak (1947) under the name *Leptosphaeria hippophaës*. Ascospores mature asynchronously, starting from the ascus base. The taxonomic and nomenclatural history of this species is complicated. Munk (1953) based *Hymenopleella* on *Melanomma hippophaës* Fabre, which is younger than *Sphaeria hippophaës* Sollm. Winter (1887) recognised that these heterotypic names represent the same species, which was confirmed by Shoemaker & Müller (1965). Therefore Shoemaker & Müller (1965) introduced the new name *Hymenopleella sollmanni* as a replaced synonym for *Sphaeria hippophaës* Sollm., non *Hymenopleella hippophaës* (Fabre) Munk. However, they missed that, according to Art. 41.5 of the ICN, the combination *Hymenopleella hippophaës* (Fabre) Munk is invalid, as Munk (1953) did not give a reference to the place of valid publication of the basionym. Therefore, according to Art. 52.1 of the ICN, *Hymenopleella sollmannii* is a superfluous, illegitimate new name. However, since De Rulamort (1986) validated the combination *Hymenopleella hippophaës* based on

Melanomma hippophaës Fabre, *Sphaeria hippophaës* Sollm. cannot be combined in *Hymenopleella* any more, and a new replacement name is necessary. Shoemaker & Müller (1965) accepted *Hymenopleella* as different from *Lepteutypa* due to the ascospores of *Lepteutypa fuckelii*, in being 'narrower and thinner-walled, octagonal in section and having a sheath and a peculiar brown deposit in the middle line of each septum'. In our experience, a more striking difference is the euseptate nature of ascospores in *H. hippophaëicola* as opposed to distoseptate in *L. fuckelii*.

Seiridium Nees, Syst. Pilze (Würzburg): 22. 1816

Type species. *Seiridium marginatum* Nees.

Seiridium is characterised by acervular coelomycetes with versicolorous, 5-septate, appendaged conidia. Its type species *Seiridium marginatum* Nees 1816 (not *Seiridium marginatum* Schwein. 1832, a later homonym representing a rust fungus species of *Phragmidium*), was redescribed by Sutton (1980) and Shoemaker et al. (1966), who described its sexual morph as *Blogiascospora marginata*, based on co-occurrence. Here we confirm this relationship using DNA data.

Seiridium marginatum Nees, Syst. Pilze (Würzburg): 23. 1816 — Fig. 10

(non *Seiridium marginatum* Schwein., Trans. Amer. Philos. Soc., n.s. 4: 306. 1832 [1834].)

= *Blogiascospora marginata* (Fuckel) Shoemaker, E. Müll. & Morgan-Jones, Canad. J. Bot. 44: 248. 1966.

≡ *Massaria marginata* Fuckel, Jahrb. Nassauischen Vereins Naturk. 27–28: 28. 1874.

Typification. *Neotype* of *Seiridium marginatum*, proposed by Shoemaker et al. (1966): SWITZERLAND, Jura, on twigs of *Rosa*, in spring, P. Morthier, in Fuckel, *Fungi Rhen. Exs.* 2136 (previously BM; now K(M) 200376). *Epitype*, here designated: FRANCE, Burgundy, Côte-d'Or, Til-Chatel, on twigs of *Rosa canina*; holomorph, 1 Apr. 2015, A. Gardiennet AG15018 (WU 33575; MBT202960; ex-epitype culture from ascospores: CBS 140403 = BLO; culture from conidia: SEI).

Sexual morph visible through bark fissures as pale brownish spots with a central black papilla or, after removal of upper bark layers, as flattened greyish to brownish pustules 0.2–0.6 mm diam. *Ascomata* perithecial, immersed in bark, depressed

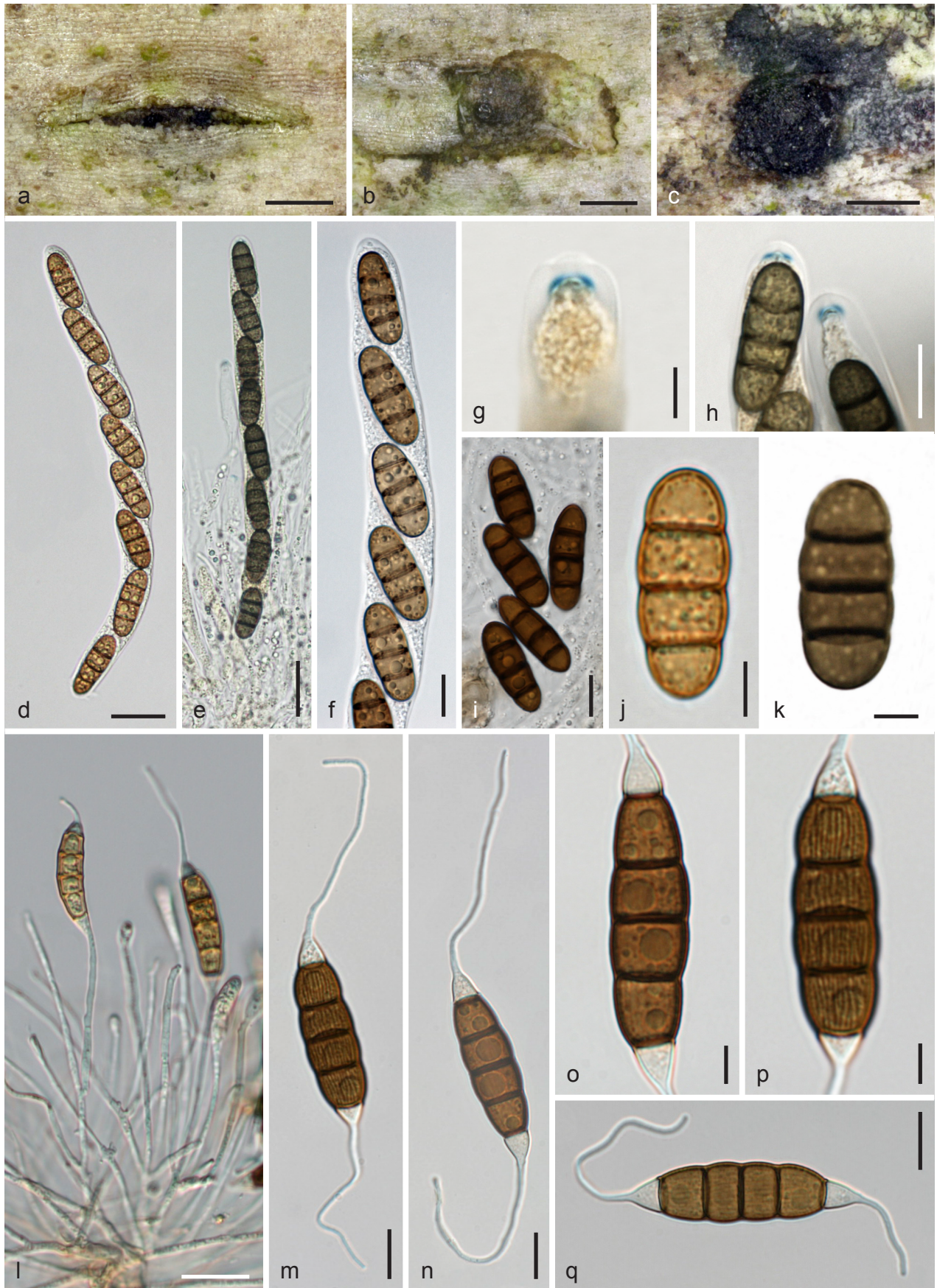


Fig. 10 *Seiridium marginatum* (WU 33575). a. Ascomata in bark fissure; b. ascoma in face view; c. conidioma in face view; d–f. asci (e. in Lugol; f. upper part with thickened apex); g, h. ascus apex in Lugol; i–k. ascospores (i. in 3% KOH; k. in Lugol; note the pitted surface); l. conidiophores; m–q. conidia (o, p. detail in section and surface view). — Scale bars: a–c = 0.3 mm; d, e, l = 20 μm; f, h, i, m, n, q = 10 μm; g, j, k, o, p = 5 μm.

globose to pyriform, 0.3–0.6 × 0.2–0.5 mm, scattered or confluent in numbers of 2–3; peridium 20–30 µm thick, dark brown, pseudoparenchymatous. *Ostioles* central, slightly papillate, black, circular in section, periphysate. *Paraphyses* filiform, 1.5–2 µm wide at the free apex, widening to 4.5 µm downwards. *Asci* cylindrical, (145–)150–178(–190) × (9.0–)10.5–14.8(–16) µm (n = 10), containing 8 (obliquely) uniseriate ascospores, unitunicate, thin-walled, with a knob-like base and crozier and a slightly thickened apex containing an amyloid ring (3.2–)3.5–4.5(–4.8) µm wide, (0.6–)0.9–1.6(–1.8) µm high (n = 21). *Ascospores* (17.5–)21–25.7(–32.5) × (8.0–)8.5–10(–11.5) µm, l/w (2.1–)2.3–2.8(–3.7) (n = 56), cylindrical-oblong, with 3, rarely 5 thick eusepta often thicker than the wall, yellow- to dark brown, darkening in KOH and Lugol, multiguttulate when fresh and often with irregularly disposed minute light dots 0.5–1 µm diam. *Conidiomata* on the natural host acervular but often with a narrow opening, depressed globose, 0.3–0.6 mm diam, 0.2–0.4 mm high, immersed-erumpent, dehiscent by irregular crumbling, scattered or confluent, dark grey to black. Basal wall pseudoparenchymatous, of small dark brown cells. *Conidiophores* hyaline, cylindrical, more or less straight, sparsely and mostly asymmetrically branched near the base, up to c. 90 × 4 µm, branches up to 60 µm long. *Conidia* formed terminally, (35.2–)38.2–42(–45) × (8.2–)8.8–10.2(–11) µm, l/w (3.5–)3.9–4.6(–4.9) (n = 51), fusiform, straight, with 5 thick, scarcely constricted eusepta, versicolorous, of 4 brown cells (24.5–35) µm long, with striate surface and hyaline end cells, each with a hyaline unbranched filiform appendage to 52 µm long.

Habitat — In bark of *Rosa canina*.

Distribution — Europe (France, Germany, Switzerland).

Additional material examined. AUSTRIA, Niederösterreich, Hardegg, Max-plateau, on twigs of *Rosa canina*, 27 Apr. 2015, H. Voglmayr (WU 33576, culture SE11 = CBS 140404).

Notes — A detailed description of the sexual morph was given by Shoemaker & Leclair (1975); see also Fuckel (1874) under *Massaria marginata*. Although *Seiridium marginatum* is morphologically well-defined, its host genus is extremely diverse and distributed all over the world. Therefore, it cannot be ruled out that morphologically similar but phylogenetically deviating species may appear in future. For this reason we fix the application of the name via epitypification.

Strickeria Körb., Parerga Lichenol. (Breslau) 5: 400. 1865

Type species. *Strickeria kochii* Körb.

Strickeria was originally described as a genus of lichenised fungi (Körber 1865). Since then this generic name was used by several authors for some *Dothideomycetes* with brown muriform ascospores, often with *Teichospora* in synonymy (Winter 1887) or *Strickeria* as a synonym of *Teichospora*. Barr (1990a, b), however, treated them as distinct genera of *Dothideomycetes*. Eriksson (in Eriksson & Hawksworth 1991), upon examination of original material of *S. kochii*, determined that the asci are unitunicate and therefore *Strickeria* was classified as *Sordariomycetes* incertae sedis (Lumbsch & Huhndorf 2010) or *Ascomycetes* (Kirk et al. 2008). We show here that Eriksson's observation was correct and determine the phylogenetic relationship of *S. kochii* in *Xylariales*.

Strickeria kochii Körb., Parerga Lichenol. (Breslau) 5: 400. 1865 — Fig. 11

= *Teichospora pezizoides* Sacc. & Speng., *Michelia* 1(no. 3): 350 (1878).

= *Hendersonia fusarioides* Sacc., *Michelia* 1: 213 (1878).

≡ *Scolicosporium pauciseptatum* Constant., *Mycotaxon* 41(2): 467 (1991).

Lectotype, here designated: AUSTRIA, Oberösterreich, Kremsmünster, on bark of *Robinia pseudoacacia*, 1862, Clar. Poetsch, in Koerber, *Lich. Sel. Germ.* 264 (W 1915-11805!; MBT202961). *Epitype*, here designated due to the earlier confusion with genera of *Dothideomycetes*: AUSTRIA, Vienna, 22nd district, Lobau, near Panozzalacke, on bark of *Robinia pseudoacacia*, 7 Mar. 2015, W. Jaklitsch (WU 33571; MBT202962; ex-epitype culture CBS 140411 = C143).

Ascomata superficial, scattered, (110–)170–260(–315) µm diam (n = 20), first nearly globose, soon collapsing, discoid, cupulate or turbinate with circular outline, broadly attached or downward slightly attenuated (broadly turbinate); surface black, warted, peridium thick and hard, dark brown, pseudoparenchymatous. Apex often with a short central, 45–80 µm wide papilla, roundish, angular to slightly elongate, ostiole periphysate. *Hamathecium* of simple, 1.5–4.5 µm wide, apically free paraphyses. *Asci* (106–)110–129(–132) × (11–)11.5–13(–13.5) µm (n = 10), cylindrical, with 8 uniseriate ascospores, short stipe and thickened apex without a distinct discharge apparatus, in KOH ascus wall thicker, ocular chamber larger, sometimes branched (thickened apex indented). *Ascospores* (12–)14.8–19(–24.2) × (6.0–)6.5–7.8(–8.5) µm, l/w (1.7–)2.1–2.7(–3.3) (n = 72), ellipsoid or broadly fusiform, with 3 transverse non-constricted septa and 1 longitudinal septum in mid cells, brown, with (sub-)hyaline end cells, smooth.

Asexual morph in nature: *Ascomata* associated with minute black pycnidia, 70–105 µm diam, globose, warted, with central pore. *Pycnidial wall* pseudoparenchymatous, of dark brown angular to globose cells 5–13 µm diam. *Conidiophores* 1–3-celled, hyaline, simple, to c. 40 µm long. No phialides present. *Conidia* formed in fascicles, (23.5–)32.5–48.3(–51) × (4.7–)5.0–6.0(–6.3) µm, l/w (4.4–)6.0–8.8(–9.6) (n = 21), falcate, first hyaline, 1-celled, finally brown, with 3–4 non-constricted septa, thin-walled, mid cells cylindrical, end cells lighter, acute and curved.

Asexual morph in culture: *Colonies* on CMD at 22 °C reaching after 1 mo a radius of up to c. 45 mm, hyaline to whitish, dense, slightly zonate, centre turning brown due to minute dark dots; the latter developing to pycnidia after c. 2 weeks. *Pycnidia* 70–175 µm diam, globose to cylindrical, dark brown, smooth, containing short hyaline cylindrical conidiophores producing strongly curved falcate conidia 35–49 × 4.7–6.0 µm of 2–5 cylindrical to nearly globose brown mid cells, a subhyaline, acute end cell and a subhyaline cylindrical base cell.

Habitat — On bark, particularly in recessed regions of thick bark of living trunks of *Robinia pseudoacacia*.

Distribution — Europe (Austria, Germany, Italy).

Additional material examined (all from bark of standing trees of *Robinia pseudoacacia*). AUSTRIA, Niederösterreich, Gumpoldskirchen, from Melkerhof upward, 1 Mar. 2015, W. Jaklitsch & H. Voglmayr (WU 33570, culture C138); Manhartsbrunn, 8 Mar. 2015, W. Jaklitsch & H. Voglmayr (WU 33572, culture C146); Mannersdorf im Leithagebirge, Schweingraben, 14 Mar. 2015, H. Voglmayr & I. Greilhuber (WU 33573, culture C149); Mödling, Eichkogel, 19 Apr. 2015, W. Jaklitsch & H. Voglmayr (WU 33574). — ITALY, Tuscany, Florence, Tavarnuzze, roadside, close to the motorway A1, 29 Oct. 2015, W. Jaklitsch (WU 36856).

Notes — Maturation of asci of *Strickeria kochii* in nature is asynchronous and due to the habitat-related exposition of the ascomata to drought many asci are not optimally developed or overmature in most specimens. Often they contain aberrant ascospores, with up to 8 septa and up to 33 × 7 µm.

Teichospora pezizoides and *Hendersonia fusarioides*, which were also described from *Robinia*, are evidently synonymous with *Strickeria kochii*; for a description and illustrations of *H. fusarioides* (as *Scolicosporium pauciseptatum*) see Constantinescu (1991).

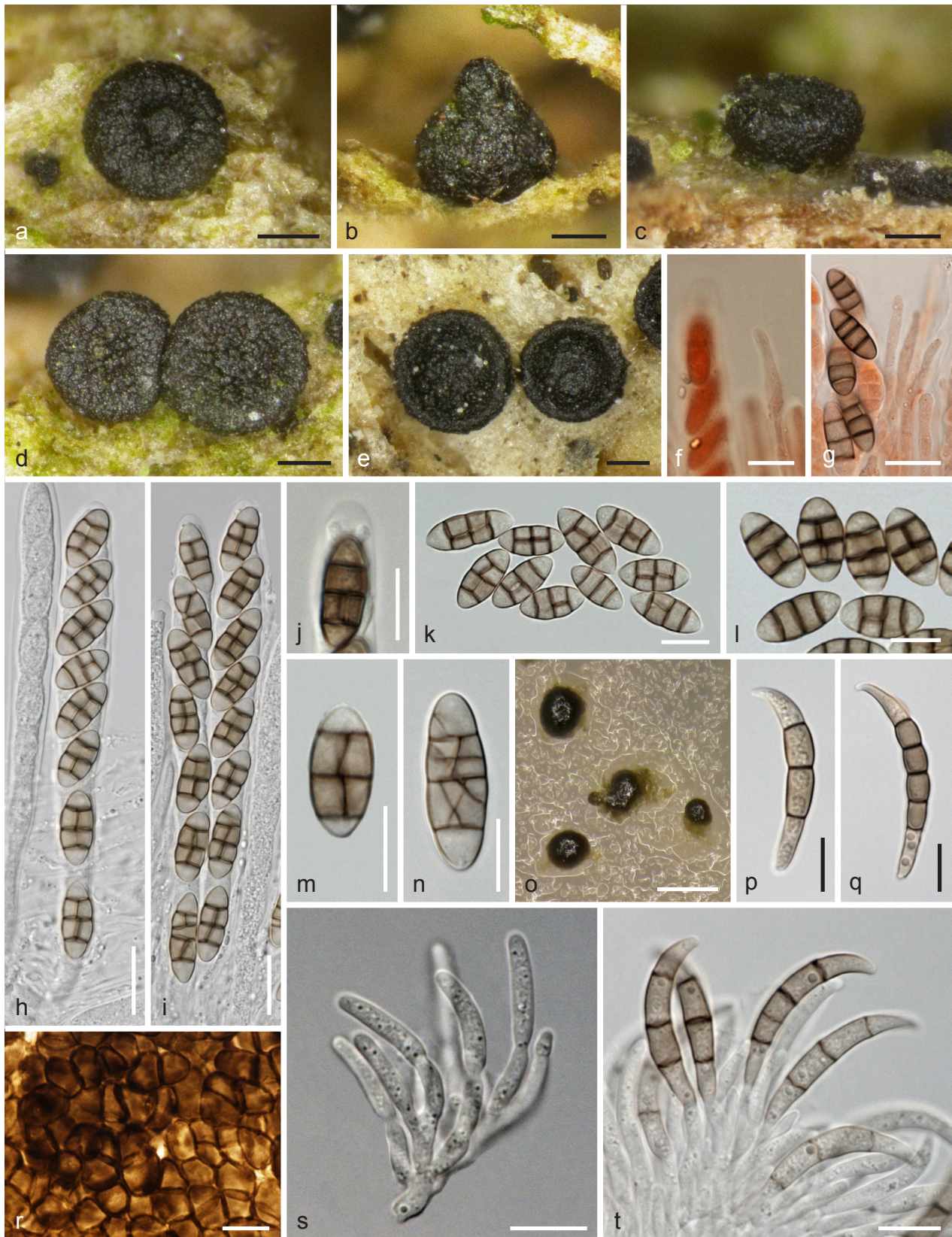


Fig. 11 *Strickeria kochii*. a–e. Ascomata (b, c. in side view); f, g. free apical ends of paraphyses in Congo Red; h, i. asci; j. ascus apex; k–n. ascospores; o–q. asexual morph in culture (CMD, 17–24 d, 22 °C); o. pycnidia; p, q. conidia; r–t. asexual morph from the natural substrate (r. pycnidial wall; s, t. conidiophores and conidia) (a, b, d: WU 33572; e, m, n: lectotype W 1915-11805; p, q: WU 33570; c, f–l, o, r–t: WU 33571). — Scale bars: a–e = 100 µm; f, j–n, p–t = 10 µm; g–i = 15 µm; o = 150 µm.

Xylariaceae Tul. & C. Tul. 1863**Clypeosphaeria** Fuckel, Jahrb. Nassauischen Vereins Naturk. 23–24: 117 (1870) [1869–70]

Type species. *Clypeosphaeria notarisii* Fuckel (a synonym of *C. mamillana* (Fr.) Lambotte).

Clypeosphaeria is characterised by ascomata with a conspicuous clypeus and brown, oblong, 1-celled ascospores with 3 indistinct pseudosepta and without a germ slit (Munk 1957). Barr (1989) extended the generic concept to include species without pseudosepta, but it is doubtful that the two other species recognised in *Clypeosphaeria* by Barr (1989), *C. perfidiosa* and *C. americana*, are congeneric with *C. mamillana*, the current name of *C. notarisii*.

Clypeosphaeria mamillana (Fr.) Lambotte, Fl. Mycol. Belgique (Verviers) 2: 247. 1880 — Fig. 12

Basionym. *Sphaeria mamillana* Fr., Kongl. Vetensk. Acad. Handl. 39: 103. 1818.

= *Clypeosphaeria notarisii* Fuckel, Jahrb. Nassauischen Vereins Naturk. 23–24: 117. 1870 [1869–70].

For additional synonyms, see Barr (1989).

Typification. *Lectotype* of *Sphaeria mamillana*, here designated: FRANCE, on *Cornus sanguinea* (*C. alba*, according to branch colour), Herb. Guepin (UPS F-175463!; MBT202963). *Epitype* of *Sphaeria mamillana*, here designated: FRANCE, 21, Dijon, Rue de Malines, on branches of *Cornus alba*, 28 Aug. 2015, A. Gardiennet AG15060 (WU 33598; MBT202964; ex-epitype culture CLM = CBS 140735). *Lectotype* of *Clypeosphaeria notarisii*, here designated: GERMANY, Oestrich, Oestricher Wald, on branches of *Rubus fruticosus*, without date, L. Fuckel, *Fungi Rhen. Exs. 1823* (W 2015-04170!; MBT203104).

Ascomata perithecial, immersed in a distinct clypeate stroma, with a black clypeus 0.5–1.2 mm diam and a central apical papilla, scattered to densely aggregated with confluent clypei, depressed globose to ellipsoid, 400–600 µm diam, circular in transverse section. Apical papilla distinct, black, 50–90 µm diam, commonly surrounded by a lighter coloured zone. *Peridium* 15–25 µm wide, blackish brown above, lighter brown at the base. *Hamathecium* of apically free, sparsely branched, 1.3–4 µm wide paraphyses similarly long as the asci. *Asci* in 3 % KOH (139–)150–174(–181) × (6.5–)7.5–10.5(–12) µm (n = 15), unitunicate, cylindrical, with 8 (partly obliquely) uniseriate, rarely more or less biseriate ascospores, with a short stipe; apex containing a wedge-shaped amyloid apical ring (2.2–)2.5–2.8(–3.0) × (2.3–)2.5–3.2(–3.5) µm (n = 21). *Ascospores* (13.7–)17.8–21.5(–25.2) × (4.6–)5.3–6.2(–7.2) µm, l/w (2.2–)3.1–3.8(–4.4) (n = 232), ellipsoid, oblong to fusiform, commonly slightly curved, with subacute to rounded ends, light to dark brown, 1-celled and when vital with 3 indistinct pseudosepta and few small guttules, when dead cytoplasm separating from the concave side and forming 4 compartments at the other side, in 3 % KOH pseudosepta becoming faint to invisible. *Colonies* on MEA and CMD hyaline to pure white, dense, radial, growth radius at 22 °C after 1 mo to c. 50 mm on CMD, to c. 40 mm on MEA. No asexual morph observed.

Habitat — In bark of various shrubs and herbaceous plants; e.g. on *Cornus* (type host of *S. mamillana*), especially *C. alba* including its cultivars; *Rubus fruticosus* (type host of *C. notarisii*); *Epilobium* spp.

Distribution — Europe, probably North America.

Additional material examined. FRANCE, 21, Saint-Apollinaire, D700, L'Arc, on branches of *Cornus alba*, 28 Aug. 2015, A. Gardiennet AG15061 (WU 33599, culture CLM1); Marcille-sur-Tille, Grand rue, on branches of *Cornus alba*, 19 Aug. 2015, A. Gardiennet AG15056 (WU 36850, culture CLM2); Marcille-sur-Tille, Rue de Messageries, on branches of *Cornus alba*, 19 Aug. 2015, A. Gardiennet AG15059 (WU 36851). — GERMANY, Steinberg, on branches of *Rubus fruticosus*, spring, without date, L. Fuckel, Nassau's

Flora, ex Herb. *Barbey-Boissier* (W 1904-3852); Oestrich, Oestricher Wald, Mappen, on branches of *Rubus fruticosus*, winter, without date, L. Fuckel, *Herbier Fuckel 1894* ex Herb. *Barbey-Boissier* (W 1922-11835).

Notes — We treat *Clypeosphaeria mamillana* here as it is the type of *Clypeosphaeriaceae*, which has not been included in recent molecular phylogenies. The generic type, *Clypeosphaeria notarisii*, is generally accepted to be synonymous with *C. mamillana*, which has priority (for details see Barr 1989). A Guepin specimen of *Sphaeria mamillana* ex Herb. Fries, which is here designated as lectotype, was examined and documented; its ascospore size (20.2–24.8 × 5–6.2 µm) and septation perfectly fit recent French collections of the species. To stabilise the nomenclature, the recent collection WU 33598, which also originates from France and for which a culture and sequences are available, is here designated as epitype of *Sphaeria mamillana*. Our investigations of material of *C. notarisii* collected by Fuckel revealed identical ascospore size and septation, confirming synonymy of *Clypeosphaeria notarisii* with *C. mamillana*. The specimen of Fuckel's *Fungi Rhenani* 1823 (mentioned in the protologue) preserved in W is here designated as lectotype of *C. notarisii*. Upon colonisation by *Clypeosphaeria*, the small branches of *Cornus alba* and *Rubus fruticosus* are usually cleared, becoming light brown to whitish, and ascomata are then easy to spot. Barr (1989) reported occasional occurrence of a basal euseptum and small germ pores or slits at the ends of the ascospores, which could not be observed in our investigations. Our phylogenetic analyses places *C. mamillana* in *Xylariaceae* (Fig. 1), and classification in a separate family *Clypeosphaeriaceae* is therefore unjustified.

Clypeosphaeria uniseptata, included as representative of *Clypeosphaeriaceae* by Senanayake et al. (2015), is not congeneric with *Clypeosphaeria* but belongs to *Lepteutypa* (see above).

Xylariales Nannf. 1932 inc. sed.**Basiseptospora** Jaklitsch & Voglmayr, *gen. nov.* — MycoBank MB814844

Etymology. Referring to the basal ascospore septum.

Type species. *Basiseptospora fallax* (Petr.) Jaklitsch & Voglmayr.

Genus of *Xylariales*. *Perithecia* small, immersed in host bark below pallid to brownish patches, scattered, depressed globose, hyaline to yellowish, with a (sub-)hyaline pseudoparenchymatous peridium of thin-walled cells, outermost peridial cell layer becoming brownish with age. *Hamathecium* of apically free, septate paraphyses embedded in gel. *Asci* fusoid to clavate, octosporous, unstable when fresh, apex containing an amyloid ring. *Ascospores* distinctly apiosporous with a small lower cell, straight or slightly curved, surrounded by a gelatinous sheath swelling in 3 % KOH. *Asexual morph* not known.

Notes — *Basiseptospora* differs from the unrelated genus *Pseudomassaria* primarily in its pallid peridium. The phylogenetic relationship to *Polyancora*, a genus with peculiar conical morphology and ecology (Voglmayr & Yule 2006), is highly supported in ML bootstrap analyses, but receives no significant bootstrap support in MP analyses. The familial affiliation of *Basiseptospora* is currently unresolved, and we refrain from describing a new family due to lack of significant backbone support of the deeper nodes of the phylogenetic trees.

Basiseptospora fallax (Petr.) Jaklitsch & Voglmayr, *comb. nov.* — MycoBank MB814845

Basionym. *Apiosporina fallax* Petr., Ann. Mycol. 25, 3/4: 279. 1927.

≡ *Pseudapiospora fallax* (Petr.) Petr., Hedwigia 68: 233. 1928.

≡ *Pseudomassaria fallax* (Petr.) Arx, Ber. Schweiz. Bot. Ges. 62: 349. 1952.

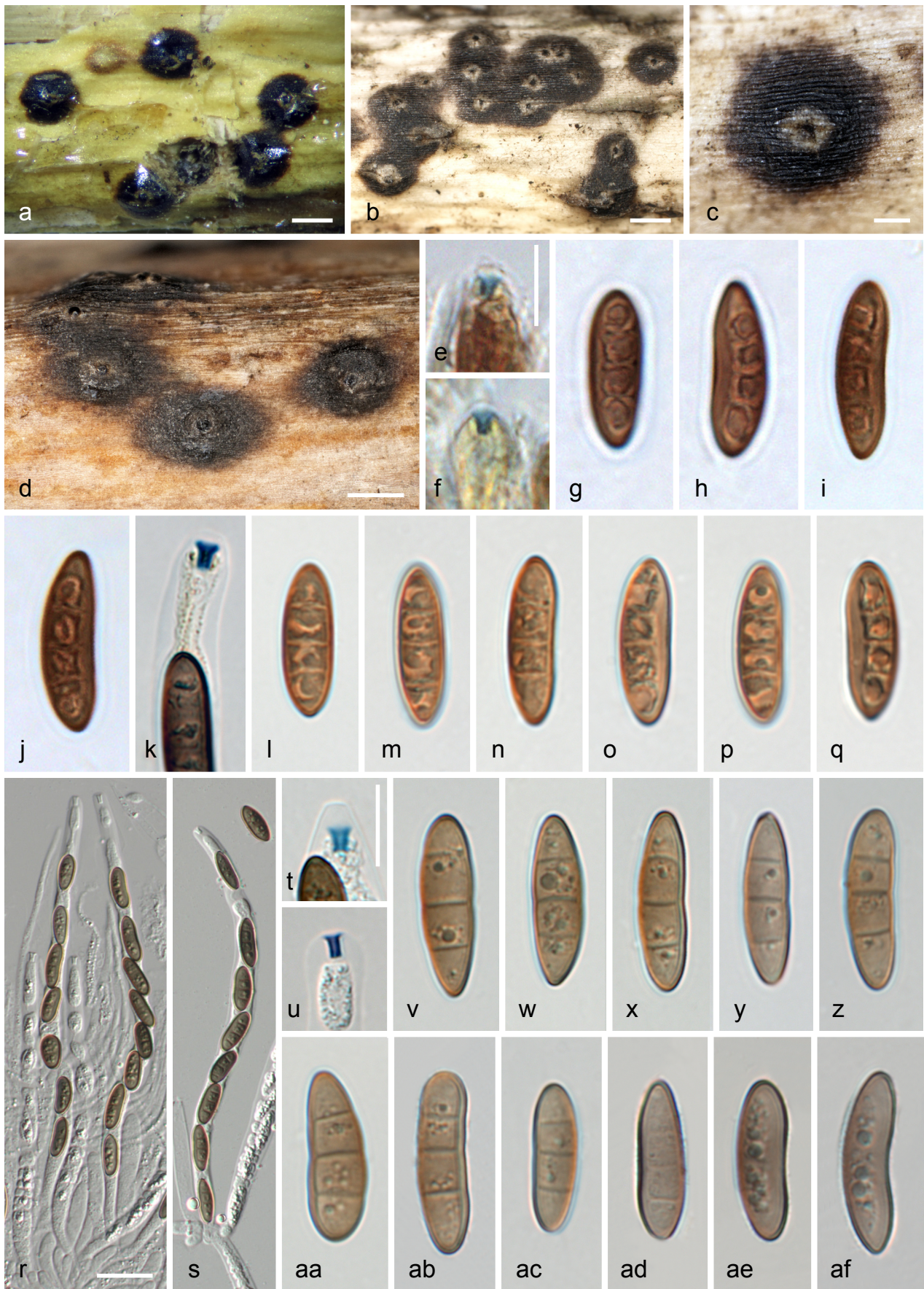


Fig. 12 *Clypeosphaeria mamillana*. a–g. Ascomata in face view embedded in cleared host tissue, showing the clypeus and ostiole; e, f, k, t, u. ascus apices (e, f, t. in Lugol; k, u. in 3 % KOH + Lugol); g–j, l–q, v–af. ascospores, note the three pseudosepta disappearing in 3 % KOH (ad–af) and the plasma separating from the concave side of dead ascospores (h–j, o, q); r, s. asci with filiform paraphyses (in 3 % KOH) (a, e–j: UPS F-175463 (lectotype of *Sphaeria mamillana*; images by I. Olariaga); b, c, r–s, ad–af: WU 33598 (epitype of *Sphaeria mamillana*); d, k–q: Fuckel, Fungi Rhenani 1823 (W 2015-04170, lectotype of *Clypeosphaeria notarisii*); t–ac: WU 33599). — Scale bars: a, b, d = 0.5 mm; c = 0.2 mm; e–q, t–af = 10 µm; r, s = 20 µm.

Typification. *Lectotype* of *Apiosporina fallax*, here designated: CZECH REPUBLIC, Moravia, Hranice (Mährisch-Weißkirchen), shrubs at the margin of the common pasture of Velká (Welka), on dead twigs of *Cornus sanguinea*, Oct. 1926, F. Petrak (W 1978-0010762; MBT203101); same collection data (W 1992-0005924, isotype). *Epitype*, here designated: AUSTRIA, Vienna, 3rd district, Botanical Garden of the University, on corticated twigs of *Cornus sanguinea*, 9 Jan. 2011, H. Voglmayr (WU 31326, ex-epitype culture CBS 129020 = PSC; MBT203102; ITS-LSU sequence JF440983).

Notes — This species has been described and illustrated as *Pseudomassaria fallax* in detail by Jaklitsch & Voglmayr (2012). Two collections are mentioned in the protologue, and of the first of these, two specimens are extant in W, one of which is here selected as lectotype. To stabilise the nomenclature, the recent collection WU 31326, which was illustrated in Jaklitsch & Voglmayr (2012) and for which a culture and sequences are available, is here designated as epitype.

DISCUSSION

All genera treated here in detail are represented by their type species, which were recently collected, cultured and sequenced. This enabled us to determine their phylogenetic relationships and thus several taxonomic and nomenclatural conclusions can be drawn on the generic or higher levels. Quite unexpectedly *Requienella* and the *Requienellaceae* belong to the *Xylariales* despite their clearly fissitunicate asci. Although this may be surprising, fissitunicate dehiscence of asci has been also noted in other groups of *Sordariomycetes*, such as the *Diaporthales*, e.g. in sexual morphs of *Stegosporium* (see Voglmayr & Jaklitsch 2008 under *Prosthecium*, Voglmayr & Jaklitsch 2014) or in the *Calosphaeriales* (Damm et al. 2008). We also show that earlier opinions about synonymy in *Requienella* are erroneous: two different species, *R. seminuda* and *R. fraxini*, whose differences are corroborated by *rpb2* and *tef1* sequences, occur on *Olea* and *Fraxinus*. *Acrocordiella occulta* is even generically different from *Requienella*.

In recent publications on xylarialean fungi several new families were described, also the order *Amphisphaeriales* was revived by Senanayake et al. (2015). In our analysis approximately the upper third of the phylogenetic tree (Fig. 1) forms a statistically highly supported clade, which, however, does not include *Amphisphaeria* and is thus not congruent with the *Amphisphaeriales*. We name this clade after the earliest available name, *Sporocadaceae* with *Robillardaceae* (Crous et al. 2015) as a synonym. Also the families *Bartalinaceae*, *Discosiaceae* and *Pestalotiopsisaceae* of Senanayake et al. (2015) are relegated to synonymy. In lack of other markers for the great majority of taxa the current phylogenies of *Xylariales* are primarily based on rDNA sequence data, and resolution of these phylogenies is simply insufficient to allow far-reaching subdivisions into formal higher taxa (Fig. 1). A subgrouping also appears inappropriate, because the *Sporocadaceae* obviously represent a natural grouping, which has the following common basis: (most) asexual morph genera are acervular coelomycetes with the same type of conidiogenesis and conidium, the latter only differing in colour (hyaline, pale or dark brown), septation (phragmo- or dictyosporous) and the number, orientation and type of appendages (exogenous/cellular or endogenous/cell elongation, branched/unbranched). As Sutton (1980: 265) pointed out, genera were either lumped (Guba 1961) or split in a large number of genera (Steyaert 1949 and later publications), in part illogically, as most genera are defined by conidial septation and numbers of appendages, whereas there is no such splitting in *Seimatosporium*. A subsequent splitting of *Seimatosporium* into five genera (Nag Raj 1991) was disproven by Tanaka et al. (2011). In any case, the definition and delimitation of genera but also species is far from clear, and molecular data

of type species are lacking for many genera. Genera and species had been defined based on dried herbarium specimens, but conidial traits are much more variable in culture. Sutton (1980) also noted that the complex containing *Monochaetia*, *Morinia*, *Pestalotia*, *Pestalotiopsis*, *Seimatosporium*, *Seiridium* and *Truncatella* is a well-defined group. This group, augmented by *Discosia* s.l., is highly supported in our analyses and named *Sporocadaceae* as noted above. *Strickeria kochii* falls in a subclade of this group, which is no surprise when the asexual morph is considered. In any case, our result confirms Eriksson's (Eriksson & Hawksworth 1991) view that the genus *Strickeria* belongs to the *Sordariomycetes* and is thus unavailable for *Dothideomycetes* that had been segregated from *Teichospora*. *Lepteutypa hippophaës*, for which Shoemaker & Müller (1965) found a monochaetia-like asexual morph (due to its 4-septate conidia) in culture and which is member of another subclade of the *Sporocadaceae*, is segregated from *Lepteutypa* and placed in *Hymenopleella* under the new name *H. hippophaëicola*. Much more sampling is necessary to evaluate different taxonomic approaches. In our opinion currently too much splitting is going on and too many family names are being created, for phylogenetic clades, which are statistically poorly supported and may change, when more data become available. Our phylogenetic characterisation of the generic types of *Lepteutypa*, *L. fuckelii*, and *Seiridium*, *S. marginatum*, clearly shows that these genera are unrelated and thus earlier views of congenericity are erroneous. A good taxonomy of these fungi, esp. *Seiridium* spp., is phytopathologically relevant, as important diseases like cypress canker (or 'Seiridium canker of Cupressus'; see e.g. Krokene et al. 2004) are known. *Lepteutypa fuckelii* does not form an asexual morph, but asexual morphs have been described for several species assigned to *Lepteutypa*, often by association on the natural host: e.g. *Seiridium canariense* for *Lepteutypa cisticola* (Nag Raj & Kendrick 1985), *S. cardinale*, *S. cupressi* and *S. unicolorne* for *L. cupressi* (Swart 1973, Nag Raj & Kendrick 1985) or *Pestalotiopsis* sp. for *L. podocarp* (Van der Aa 1986). These species are likely not congeneric with *L. fuckelii*. For *Lepteutypa cupressi* this is shown in the present work (Fig. 1). This species was described from *Cupressus macrocarpa* in Kenya as *Rhynchosphaeria cupressi* (syn. *Cryptostictis cupressi*). Sequences deposited in GenBank are from the strain IMI 052255, also from Kenya, but *Cupressus forbesii* (*Hesperocyparis forbesii*) is given as host in the CABI database. This may represent *Lepteutypa cupressi*, but is probably not conspecific with isolates of *Seiridium cupressi* from Australia (Cunnington 2007), South Africa and New Zealand (Barnes et al. 2001). Although Swart (1973) interpreted the high morphological variation of *Seiridium* on *Cupressus* only as variants of a single species, Barnes et al. (2001) separated *S. cardinale*, *S. cupressi* and *S. unicolorne* as distinct species using histone and tubulin sequences and determined that the major pathogens are *S. cardinale* and *S. cupressi*. Cunnington (2007) correlated tubulin sequences with conidial morphology and determined *S. cupressi* as the common cause of cypress canker in south-eastern Australia. He also maintained that the sexual morph of *S. cupressi* is *Lepteutypa cupressi*, and that the sexual morphs of the other *Seiridium* species are not known. However, there is still no evidence of a direct molecular connection of the African *L. cupressi* and the Australian *S. cupressi* and its sexual morph. Unfortunately, no African material of the sexual morph, *Lepteutypa cupressi*, was included in these analyses, and no histone and tubulin sequences are yet available for the African *L. cupressi*. For the strain ATCC 48158 of *S. cupressi* originating from New Zealand, ITS as well as histone and tubulin sequences are available. In the phylogenetic analyses of Barnes et al. (2001) and Cunnington (2007), this strain is contained within the *S. cupressi* clade. However, in our

phylogenetic analyses based on ITS (Fig. 1), *S. cupressi* strain ATCC 48158 is distinct from *L. cupressi* IMI 052255, indicating that they are not conspecific. If this is the case, it may have the undesirable consequence that the current species concept of *S. cupressi* is inappropriate, as both *S. cupressi* and *L. cupressi* are based on material from the same hosts collected in Kenya. This group therefore requires substantial taxonomic revision, including a representative sampling of well-identified strains as well as additional sequence regions other than ITS-LSU. In conclusion *Lepteutypa* had been ill-defined and it was wise to recognise genera like *Ellurema* (Nag Raj & Kendrick 1985) or *Pestalospaeria* (Barr 1975), which belong to the *Sporocadaceae*. On the other hand *Seiridium* was treated as a synonym of *Monochaetia* (see Sutton 1980), until Shoemaker et al. (1966) resurrected the genus. It is still unclear whether these genera should be recognised as separate entities.

Clypeosphaeria uniseptata, a non-type species was taken as the basis of the *Clypeosphaeriaceae* (Hernández-Restrepo et al. 2015, Senanayake et al. 2015). Here we combine this species in *Lepteutypa*. As a consequence, the concept of the *Clypeosphaeriaceae* as based on *C. uniseptata* in Senanayake et al. (2015) is erroneous, because it is not closely related to the generic type, *Clypeosphaeria mamillana* (Fig. 1), and we do not recognise a family *Clypeosphaeriaceae*. DNA data of fresh material of *C. mamillana* clearly place the fungus and thus the genus *Clypeosphaeria* in the *Xylariaceae*. This position was also found for the GenBank ITS accession AF009808 labelled *Clypeosphaeria mamillana* (not shown), but this sequence is different from ours, suggesting a different species of *Clypeosphaeria*.

As a continuation of our previous study on *Pseudomassaria* (Jaklitsch & Voglmayr 2012), we also evaluated the phylogenetic relationships of *Pseudomassaria corni*, *P. carolinensis* and *P. fallax*, and new materials as well as extended sequence data and phylogenies called for implementing necessary taxonomic changes. In the ML tree (Fig. 1), the newly included *P. corni* is sister species to *Pseudomassaria*; however, this position was usually not supported in MP analyses, which mostly revealed an unsupported sister group relationship to *Leiosphaerella* (data not shown). We are therefore using the already available genus *Pseudopiospora* for *P. corni*, of which it is the generic type. The septum of its ascospores is much closer to the middle of the ascospore than in species of *Pseudomassaria*, which may be another argument for its classification in *Pseudopiospora*. In agreement with previous studies (Shirouzu et al. 2010, Jaklitsch & Voglmayr 2012), *Pseudomassaria carolinensis* is contained within the genus *Beltraniella* (*Beltraniellaceae*) with high support (Fig. 1). However, its ITS sequence is distinct from *B. porticensis*, which was tentatively given as asexual morph by Hodges & Barr (1971), although they already noticed some morphological and ecological differences. Acknowledging these differences, it is here combined in *Beltraniella*. For *P. fallax*, also phylogenetically distant from *Pseudomassaria*, the new genus *Basiseptospora* is described.

Last but not least, we provide sequences of *Broomella vitalbae*, *Cainia desmazieri* and *Creosphaeria sassafras*. *Broomella vitalbae* is revealed as a close relative of the generic type of *Truncatella*, *T. angustata* (syn. *T. truncata*). Based on priority, the generic name *Broomella* should be applied. *Cainia desmazieri* is confirmed to be closely related to the generic type, *Cainia graminis*, which is corroborated by similar morphology. *Creosphaeria sassafras* is sister genus to *Lopadostoma*, which is in line with Senanayake et al. (2015).

Acknowledgements We thank the fungarium curators of B, G, GZU, W and Walter Till at WU for sending and managing collections, the staff at L for access to Persoon's material, I. Olariaga for the examination and imaging of UPS specimens, A. Igersheim for information on specimens in W, H.-O. Baral, P. Bormans, P. Cannon, J. Fournier, G. Friebe, T. Læssøe, B. Norden, K. Preston-Mafham, T. Richter, E. Rubio, P. Thompson and B. Wergen for fresh material and/or data and B. Aguirre-Hudson (K) for information about the types of *Sphaeria corni* and *Seiridium marginatum*. The financial support by the Austrian Science Fund (FWF; project P25870-B16) is gratefully acknowledged.

REFERENCES

- Aptroot A. 1991. A monograph of the Pyrenulaceae (excluding Anthracothecium and Pyrenula) and the Requiellaceae, with notes on the Pleomassariaceae, the Trypetheliaceae and Mycomicrothelia. *Bibliotheca Lichenologica* 44: 1–178.
- Barnes I, Roux J, Wingfield MJ, et al. 2001. Characterization of *Seiridium* spp. associated with cypress canker based on β -tubulin and histone sequences. *Plant Disease* 85: 317–321.
- Barr ME. 1964. The genus *Pseudomassaria* in North America. *Mycologia* 56: 841–862.
- Barr ME. 1975. *Pestalospaeria*, a new genus in the *Amphisphaeriaceae*. *Mycologia* 67: 187–194.
- Barr ME. 1989. *Clypeosphaeria* and the *Clypeosphaeriaceae*. *Systema Ascomycetum* 8: 1–8.
- Barr ME. 1990a. Some dictyosporous genera and species of Pleosporales in North America. *Memoirs of the New York Botanical Garden* 62: 1–92.
- Barr ME. 1990b. *Melanommatales* (Loculoascomycetes). *North American Flora. Series II*, 13: 1–129.
- Boise JR. 1986. *Requiellaceae*, a new family of Loculoascomycetes. *Mycologia* 78: 37–41.
- Carbone I, Kohn LM. 1999. A method for designing primer sets for speciation studies in filamentous ascomycetes. *Mycologia* 91: 553–556.
- Castañeda Ruiz RF, Cano J, Guarro J. 1996. Notes on conidial fungi. VII. Two new species of *Beltraniella* from Cuba. *Mycotaxon* 58: 243–251.
- Constantinescu O. 1991. *Scolicosporium pauciseptatum* nom. nov. *Mycotaxon* 41: 467–470.
- Corlett M. 1978. *Pseudomassaria corni*. *Fungi Canadenses* No. 121. National Mycological Herbarium, Agriculture Canada, Ottawa, Ontario (available online at the CBS).
- Corlett M. 1981. A taxonomic survey of some species of *Didymella* and *Didymella*-like species. *Canadian Journal of Botany* 59: 2016–2042.
- Crous PW, Carris LM, Giraldo A, et al. 2015. The genera of fungi – fixing the application of the type species of generic names – G 2: Allantophomopsis, Latorua, Macrodiplodiopsis, Macrohilum, Milospium, Protostegia, Pyricularia, Robillarda, Rutola, Septoriella, Torula, and Wojnowicia. *IMA Fungus* 6: 163–198.
- Cunnington JH. 2007. *Seiridium cupressi* is the common cause of cypress canker in south-eastern Australia. *Australasian Plant Disease Notes* 2: 53–55.
- Damm U, Crous PW, Fourie PH. 2008. A fissitunicate ascus mechanism in the *Calosphaeriaceae*, and novel species of *Jattaea* and *Calosphaeria* on *Prunus* wood. *Persoonia* 20: 39–52.
- De Hoog GS, Gerrits van den Ende AHG. 1998. Molecular diagnostics of clinical strains of filamentous basidiomycetes. *Mycoses* 41: 183–189.
- De Rulmort M. 1986. Remarques taxinomiques et nomenclaturales sur quelques micromycètes. *Bulletin de la Société Botanique du Centre-Ouest, nouvelle série* 17: 191–192.
- Eriksson OE. 1982. Notes on ascomycetes and coelomycetes from NW. Europe. *Mycotaxon* 15: 189–202.
- Eriksson OE, Hawksworth DL. 1986. Notes on ascomycete systematics. Nos. 1–224. *Systema Ascomycetum* 5: 113–174.
- Eriksson OE, Hawksworth DL. 1991. Notes on ascomycete systematics. Nos. 1252–1293. *Systema Ascomycetum* 10: 135–149.
- Fabre JHC. 1883. Sphériacées du département de vaucluse. *Annales des Sciences Naturelles, sixième série, Botanique* 15: 31–69, pl. 1–3.
- Fuckel L. 1871 [1871–72]. *Symbolae Mycologicae. Beiträge zur Kenntnis der Rheinischen Pilze. Erster Nachtrag. Jahrbücher des Nassauischen Vereins für Naturkunde* 25–26: 287–346.
- Fuckel L. 1874 [1873–74]. *Symbolae Mycologicae. Zweiter Nachtrag. Jahrbücher des Nassauischen Vereins für Naturkunde* 27–28: 1–99.
- Guba EF. 1961. *Monograph of Monochaetia and Pestalotia*. Harvard University Press, Cambridge, Massachusetts.
- Hall TA. 1999. BioEdit: a user-friendly biological sequence alignment editor and analysis program for Windows 95/98/NT. *Nucleic Acids Symposium Series* 41: 95–98.

- Harris RC. 1995. More Florida lichens, including the 10¢ tour of the pyrenolichens. New York, R.C. Harris.
- Hausknecht A, Greilhuber I, Jaklitsch W. 2003. Rezente Pilzfunde aus Osttirol. *Österreichische Zeitschrift für Pilzkunde* 12: 153–192.
- Hernández-Restrepo M, Groenewald JZ, Crous PW. 2015. Taxonomic and phylogenetic re-evaluation of *Microdothium*, *Monographella* and *Idriella*. *Persoonia* 36: 57–82.
- Hodges CS, Barr ME. 1971. A new species of *Pseudomassaria* and its *Beltraniella* conidial state. *Mycologia* 63: 562–566.
- Hughes SJ. 1958. Revisionses hyphomycetum aliquot cum appendice de nominibus rejiciendis. *Canadian Journal of Botany* 36: 727–836.
- Jaklitsch WM. 2009. European species of *Hypocrea* – Part I. *Studies in Mycology* 63: 1–91.
- Jaklitsch WM, Fournier J, Rogers JD, et al. 2014. Phylogenetic and taxonomic revision of *Lopadostoma*. *Persoonia* 32: 52–82.
- Jaklitsch WM, Komon M, Kubicek CP, et al. 2005. *Hypocrea voglmayrii* sp. nov. from the Austrian Alps represents a new phylogenetic clade in *Hypocrea*/*Trichoderma*. *Mycologia* 97: 1365–1378.
- Jaklitsch WM, Stadler M, Voglmayr H. 2012. Blue pigment in *Hypocrea caerulea* sp. nov. and two additional new species in sect. *Trichoderma*. *Mycologia* 104: 925–941.
- Jaklitsch WM, Voglmayr H. 2012. Phylogenetic relationships of five genera of *Xylariales* and *Rosasphaeria* gen. nov. (*Hypocreales*). *Fungal Diversity* 52: 75–98.
- Kirk PM, Cannon PF, Minter DW, et al. 2008. *Ainsworth & Bisby's dictionary of the fungi*, 10th edn. CABI, Wallingford.
- Körber GW. 1865. *Parerga lichenologica*. *Ergänzungen zum Systema lichenum Germaniae*: 385–501.
- Krokene P, Barnes I, Wingfield BD, et al. 2004. APCR-RFLP based diagnostic technique to rapidly identify *Seiridium* species causing cypress canker. *Mycologia* 96: 1352–1354.
- Liu YL, Whelen S, Hall BD. 1999. Phylogenetic relationships among ascomycetes: evidence from an RNA polymerase II subunit. *Molecular Biology and Evolution* 16: 1799–1808.
- Lumbsch HT, Huhndorf SM. 2010. *Myconet* volume 14. Part one. Outline of ascomycota 2009. Part two. Notes on ascomycete systematics. Nos. 4751–5113. *Fieldiana, Life and Earth Sciences* 1–64.
- Müller E, Von Arx JA. 1962. Die Gattungen der didymosporen Pyrenomyceten. *Beiträge zur Kryptogamenflora der Schweiz* 11, 2: 1–922.
- Munk A. 1953. The system of the Pyrenomycetes. A contribution to a natural classification of the group *Sphaeriales* sensu Lindau. *Dansk Botanisk Arkiv* 15, 2: 1–163.
- Munk A. 1957. Danish Pyrenomycetes. *Dansk Botanisk Arkiv* 17: 1–491.
- Nag Raj TR. 1991. Updates on some species of *Discosia*. *Canadian Journal of Botany* 69: 1246–1250.
- Nag Raj TR, Kendrick B. 1985. *Ellurema* gen. nov., with notes on *Lepteutypa cisticola* and *Seiridium canariense*. *Sydowia* 38: 178–193.
- Nordén B, Jordal JB. 2014. *Requienella seminuda*, a corticolous ascomycete on *Fraxinus excelsior* new to Norway. *Agarica* 35: 29–34.
- Otth G. 1868. Sechster Nachtrag zu dem in Nr. 15–23 enthaltenen Verzeichnisse schweizerischer Pilze. *Mitteilungen der Naturforschenden Gesellschaft in Bern* Nr. 654–683: 37–70.
- Petrak F. 1923. *Mykologische Notizen VI*. *Annales Mycologici* 21: 182–335.
- Petrak F. 1925. *Mykologische Notizen VIII*. *Annales Mycologici* 23: 1–143.
- Petrak F. 1947. *Kleine Beiträge zur Pilzflora von Tirol*. *Sydowia* 1: 313–327.
- Riethmüller A, Voglmayr H, Göker M, et al. 2002. Phylogenetic relationships of the downy mildews (*Peronosporales*) and related groups based on nuclear large subunit ribosomal DNA sequences. *Mycologia* 94: 834–849.
- Saccardo PA. 1880. *Fungi Gallici lecti a cl. viris P. Brunaud, Abb. Letendre, A. Malbranche, J. Thery vel editi in Mycotheca Gallica C. Roumeguéri. Series II. Michelia* 2, 6: 39–135.
- Saccardo PA. 1883. *Sphaeriaceae, Pleophragmiae, Trematosphaeria*. *Sylogae Fungorum* II: 118.
- Scheinflug H. 1958. Untersuchungen über die Gattung *Didymosphaeria* Fuck. und einige verwandte Gattungen. *Berichte der Schweizerischen Botanischen Gesellschaft* 68: 325–385.
- Senanayake IC, Maharachchikumbura SSN, Hyde KD, et al. 2015. Towards unraveling relationships in *Xylariomycetidae* (*Sordariomycetes*). *Fungal Diversity* 73: 73–144.
- Shirouzu T, Hirose D, Tokumasu S, et al. 2010. Host affinity and phylogenetic position of a new anamorphic fungus *Beltraniella botryospora* from living and fallen leaves of evergreen oaks. *Fungal Diversity* 43: 85–92.
- Shoemaker RA, Leclair PM. 1975. Type studies of *Massaria* from the Wehmeyer collection. *Canadian Journal of Botany* 53: 1568–1598.
- Shoemaker RA, Müller E. 1964. Generic correlations and concepts: *Clathridium* (= *Griphosphaeria*) and *Seimatosporium* (= *Sporocadus*). *Canadian Journal of Botany* 42: 403–410.
- Shoemaker RA, Müller E. 1965. Types of the pyrenomycete genera *Hymenoplella* and *Lepteutypa*. *Canadian Journal of Botany* 43: 1457–1460.
- Shoemaker RA, Müller E, Morgan-Jones C. 1966. *Fuckel's Massaria marginata* and *Seiridium marginatum* Nees ex Steudel. *Canadian Journal of Botany* 44: 247–254.
- Silvestro D, Michalak I. 2012. *raxmlGUI: a graphical front-end for RAxML*. *Organisms Diversity & Evolution* 12: 335–337.
- Sowerby J. 1802. *Coloured figures of English fungi or mushrooms* 3, 25: plates 361–374. Sowerby, London.
- Stamatakis E. 2006. *RAxML-VI-HPC: maximum likelihood-based phylogenetic analyses with thousands of taxa and mixed models*. *Bioinformatics* 22: 2688–2690.
- Steyaert RL. 1949. Contribution à l'étude monographique de *Pestalotia* de Not. et *Monochaetia* Sacc. (*Truncatella* gen. nov. et *Pestalotiopsis* gen. nov.). *Bulletin du Jardin Botanique de l'État à Bruxelles* 19: 285–354.
- Sutton BC. 1980. *The Coelomycetes. Fungi imperfecti with pycnidia, acervuli and stromata*. CMI, Kew.
- Swart HJ. 1973. The fungus causing cypress canker. *Transactions of the British Mycological Society* 61: 71–82.
- Swofford DL. 2002. *PAUP* 4.0b10: phylogenetic analysis using parsimony (*and other methods)*. Sinauer Associates, Sunderland, Massachusetts.
- Tanaka K, Endo M, Hirayama K, et al. 2011. Phylogeny of *Discosia* and *Seimatosporium*, and introduction of *Adisciso* and *Immersidiscosia* genera nova. *Persoonia* 26: 85–98.
- Thiers B. 2015. *Index Herbariorum: A global directory of public herbaria and associated staff*. New York Botanical Garden's Virtual Herbarium. <http://sweetgum.nybg.org/ih/>
- Triebel D, Scholz P. 2015. *IndExs – Index of Exsiccatae*. Botanische Staatssammlung München. <http://indexs.botanischestaatssammlung.de/>.
- Van der Aa JA. 1986. Revision of *Keissleriella podocarpi* Butin. *Sydowia* 39: 1–7.
- Vilgalys R, Hester M. 1990. Rapid genetic identification and mapping of enzymatically amplified ribosomal DNA from several *Cryptococcus* species. *Journal of Bacteriology* 172: 4238–4246.
- Voglmayr H, Jaklitsch WM. 2008. *Prosthecium* species with *Stegonsporium* anamorphs on *Acer*. *Mycological Research* 112: 885–905.
- Voglmayr H, Jaklitsch WM. 2011. Molecular data reveal high host specificity in the phylogenetically isolated genus *Massaria* (*Ascomycota*, *Massariaceae*). *Fungal Diversity* 46: 133–170.
- Voglmayr H, Jaklitsch WM. 2014. *Stilbosporaceae* resurrected: generic reclassification and speciation. *Persoonia* 33: 61–82.
- Voglmayr H, Yule C. 2006. *Polyancora globosa* gen. et sp. nov., an aero-aquatic fungus from Malaysian peat swamp forests. *Mycological Research* 110: 1242–1252.
- Werle E, Schneider C, Renner M, et al. 1994. Convenient single-step, one tube purification of PCR products for direct sequencing. *Nucleic Acids Research* 22: 4354–4355.
- Winter G. 1887. *Ascomyceten: Gymnoasceen und Pyrenomyceten*. *Rabenhorst's Kryptogamen-Flora* 2: 1–928.