

Sonography to Rule Out Tuberculosis in Sub-Saharan Africa: A Prospective Observational Study

Robert Ndege,^{1,2,a} Maja Weisser,^{1,3,4,5,a} Luigia Elzi,^{5,6} Flavia Diggelmann,⁵ Farida Bani,^{1,2} Winfrid Gingo,² George Sikalengo,^{1,2} Herry Mapesi,^{1,2} Elisante Mchomvu,² Lujeko Kamwela,¹ Dorcas Mnzava,¹ Manuel Bategay,^{3,5} Klaus Reither,^{4,5} Daniel H. Paris,^{4,5} and Martin Rohacek^{1,2,4,5}

¹Ifakara Health Institute, United Republic of Tanzania; ²St. Francis Referral Hospital, Ifakara, United Republic of Tanzania; ³Division of Infectious Diseases, University Hospital Basel, Switzerland; ⁴Department of Medicine, Swiss Tropical and Public Health Institute, Basel, Switzerland; ⁵Faculty of Medicine, University of Basel, Switzerland; ⁶Regional Hospital of Bellinzona e Valli, Switzerland

Background. Patients with suspected tuberculosis are often overtreated with antituberculosis drugs. We evaluated the diagnostic value of the focused assessment with sonography for HIV-associated tuberculosis (FASH) in rural Tanzania.

Methods. In a prospective cohort study, the frequency of FASH signs was compared between patients with confirmed tuberculosis and those without tuberculosis. Clinical and laboratory examination, chest x-ray, Xpert MTB/RIF assay, and culture from sputum, sterile body fluids, lymph node aspirates, and Xpert MTB/RIF urine assay was done.

Results. Of 191 analyzed patients with a 6-month follow-up, 52.4% tested positive for human immunodeficiency virus, 21.5% had clinically suspected pulmonary tuberculosis, 3.7% had extrapulmonary tuberculosis, and 74.9% had extrapulmonary and pulmonary tuberculosis. Tuberculosis was microbiologically confirmed in 57.6%, probable in 13.1%, and excluded in 29.3%. Ten of eleven patients with splenic or hepatic hypoechogenic lesions had confirmed tuberculosis. In a univariate model, abdominal lymphadenopathy was significantly associated with confirmed tuberculosis. Pleural- and pericardial effusion, ascites, and thickened ileum wall lacked significant association. In a multiple regression model, abnormal chest x-ray (odds ratio [OR] = 6.19; 95% confidence interval [CI], 1.96–19.6; $P < .002$), ≥ 1 FASH-sign (OR = 3.33; 95% CI, 1.21–9.12; $P = .019$), and body temperature (OR = 2.48; 95% CI, 1.52–5.03; $P = .001$ per °C increase) remained associated with tuberculosis. A combination of ≥ 1 FASH sign, abnormal chest x-ray, and temperature $\geq 37.5^\circ\text{C}$ had 99.1% sensitivity (95% CI, 94.9–99.9), 35.2% specificity (95% CI, 22.7–49.4), and a positive and negative predictive value of 75.2% (95% CI, 71.3–78.7) and 95.0% (95% CI, 72.3–99.3).

Conclusions. The absence of FASH signs combined with a normal chest x-ray and body temperature $< 37.5^\circ\text{C}$ might exclude tuberculosis.

Keywords. FASH; sonography; sub-Saharan Africa; tuberculosis.

Tuberculosis remains one of the world's deadliest communicable diseases. In 2017, an estimated 10 million people fell ill with tuberculosis worldwide, and 1.6 million died of the disease [1]. In resource-limited settings with high tuberculosis prevalence, up to half of patients with suspected disease are treated with antituberculosis drugs without microbiological confirmation, and 30%–60% of these empirically treated patients do not have active tuberculosis [2, 3]. Among reasons for the decision to treat without a positive test result are limited availability and reduced sensitivity of microbiological tests, particularly in patients coinfecting with human immunodeficiency virus (HIV) or with suspected extrapulmonary tuberculosis [4–8]. The overtreatment of patients without tuberculosis is typically

followed by a delay or lack of diagnosis of the real underlying disease, causing unnecessary drug exposure, side effects, and costs.

Focused Assessment with Sonography for HIV-associated Tuberculosis (FASH) was developed as a method to detect signs of extrapulmonary tuberculosis, which can be learned and performed by personnel with little or no previous experience in ultrasonography [9]. The FASH consists of a rapid sonographic evaluation of the abdomen, pleural space, and heart, to identify pleural and pericardial effusion, abdominal lymphadenopathy, hypoechogenic lesions in the spleen and the liver, ascites, and thickening of the bowel wall [10]. Some of these signs have been reported to occur in the majority of HIV-positive patients with suspected extrapulmonary tuberculosis, but tuberculosis was microbiologically confirmed in only a minority of those patients [11–14].

The diagnostic value of FASH in patients with tuberculosis has not been evaluated to date [15]. To address this need, we performed a prospective observational cohort study of patients with suspected tuberculosis and 6-month follow-up in a rural region in Tanzania. In particular, we aimed (1) to compare the frequency of sonographic signs of extrapulmonary tuberculosis

Received 6 December 2018; editorial decision 18 March 2019; accepted 31 March 2019.

^aR. N. and M. W. contributed equally to this manuscript.

Correspondence: M. Rohacek, MD, Ifakara Health Institute, Mlabani Passage, P.O. Box 53, Ifakara, Tanzania (mrohacek@ihi.or.tz).

Open Forum Infectious Diseases®

© The Author(s) 2019. Published by Oxford University Press on behalf of Infectious Diseases Society of America. This is an Open Access article distributed under the terms of the Creative Commons Attribution License (<http://creativecommons.org/licenses/by/4.0/>), which permits unrestricted reuse, distribution, and reproduction in any medium, provided the original work is properly cited. DOI: 10.1093/ofid/ofz154

in patients with confirmed tuberculosis to patients with no tuberculosis and (2) to determine the sensitivity, specificity, and predictive values of FASH.

METHODS

Study Site

This prospective observational study was performed at the St. Francis Referral Hospital in Ifakara, Tanzania. The hospital serves a rural population of approximately 1 million people living in the Kilombero, Ulang, and Malinyi districts as a referral center. The hospital has 360 beds, runs an emergency department, and includes the Chronic Diseases Clinic Ifakara, which specializes in HIV and tuberculosis management [16, 17].

Study Population

Human immunodeficiency virus-positive and -negative adults aged ≥ 18 years presenting to any department of the St. Francis Referral Hospital or to the Chronic Diseases Clinic of Ifakara and fulfilling the following criteria were eligible: (1) suspected pulmonary tuberculosis, defined as presence of fever of any duration and/or night sweats during 3 weeks within the last 4 weeks, and/or weight loss, together with cough of any duration and/or hemoptysis or infiltrate on chest x-ray; (2) suspected extrapulmonary tuberculosis, defined as presence of ≥ 1 of the following signs or symptoms: fever of any duration, night sweats during 3 weeks within the last 4 weeks, weight loss, lymphadenopathy, abdominal pain, or ascites, or neurological symptoms, presence of severe anemia (hemoglobin < 8 g/dL) in an HIV-infected patient under antiretroviral treatment [18], with no cough, infiltrate in chest x-ray, or other obvious clinical explanation for those signs and symptoms listed above; (3) suspected combination of pulmonary and extrapulmonary tuberculosis, defined as presence of fever of any duration and/or night sweats during 3 weeks within the last 4 weeks, and/or weight loss, together with pulmonary and extrapulmonary signs and symptoms. Pregnant women, patients who refused to participate, and patients under pre-existing treatment with antituberculosis drugs were excluded.

Study Procedures

Patients were consecutively recruited from routine care during 1 year starting from July 2016. All included patients were interviewed and examined according to a standardized, predefined questionnaire. Axillary body temperature was measured with a digital thermometer. Chest x-ray with posterior-anterior projection was performed on the day of enrollment together with an HIV test (SD Bioline HIV 1/2 3.0; Abbott), which was confirmed by a Uni-Gold HIV Rapid Test (Trinity Biotech), if positive. Blood tests for hemoglobin, creatinine, and alanine aminotransferase were performed using Reflotron (Roche, Basel, Switzerland). All chest x-rays were reviewed and analyzed by R.N., M.W., and M.R., the last 2 of whom are board-certified

physicians. Unclear findings were discussed and interpreted by this team.

At enrollment, early morning urine and sputum samples were collected from all patients. If spontaneous sputum was not available, sputum was induced by inhalation of nebulized 3% saline solution. To ensure consistent sputum quality, a video (https://www.youtube.com/watch?v=2sd2d2_pNBA) on how to deliver sputum was shown to all patients. In case of pleural or pericardial effusion, ascites, lymphadenopathy, or meningitis, ultrasound-guided puncture and fluid aspiration was performed.

All sputum and aspirated fluid samples were analyzed by Xpert MTB/RIF assay (Cepheid, Sunnyvale, CA). In addition, sputum was processed by adding cetylpyridium chloride and *N*-acetyl-L-cysteine-sodium hydroxide and inoculated on Löwenstein-Jensen medium [19]. Sterile fluids (pleural, pericardial, and cerebrospinal fluids, ascites, and lymph node aspirates) were inoculated into liquid culture using bacteria growth indicator tube (MGIT) with a BACTEC 960 Instrument (BD Microbiology Systems, Sparks, MD). Urine was examined with Xpert MTB/RIF assay after centrifugation. Adenosine deaminase (Diazyme, Poway, CA) was measured in pleural, ascitic, and pericardial fluids.

All patients received a sonographic examination according to the FASH protocol (see [Supplementary Table S1](#)), which was performed by R.N. and F.D. The examination was supervised by M.R., either in person or by reviewing recorded images and video clips. R.N. and M.R. are board-certified sonographers. All examinations were performed with a Mindray M7 ultrasound machine (Mindray, Shenzhen, China). A convex array probe C5-2s was used, except for sonography of the ileum, where a linear array 7L-4s probe was used. All sonographic examinations were done prior to sample taking, and microbiological results were not available to the sonographers. Clinical information could not be masked to the sonographers, but it was masked to the laboratory personnel performing microbiological tests.

All data were entered into standardized electronic questionnaires (EpiData). During follow-up, decisions on whether to administer antituberculosis treatment were considered by the patients' treating physicians, who were not blinded to the results of the sonographic examination. Patients were scheduled for follow-up visits 2 and 6 months after enrollment. If patients missed their appointment, they were traced by repeated phone calls or physically by visiting their homes by motorcycle. During follow-up visits, clinical evaluation and FASH were done at 2 and 6 months.

Definitions

FASH Signs

Original FASH signs consisted of pleural or pericardial effusion, ascites, abdominal lymph nodes > 1.5 cm, hyperechogenic lesions in the liver or spleen, ileum wall thickening > 4 mm, or

deconstructed ileum wall architecture. In addition, we systematically evaluated the presence of splenomegaly, hepatomegaly, and pleural or pericardial fibrin strands in presence of effusion.

Confirmed tuberculosis was defined as ≥ 1 positive microbiological result from any site confirmed by Xpert MTB/RIF assay and/or bacteriologic culture (growth of *Mycobacterium tuberculosis*) in sputum, pleural fluid, ascites, cerebrospinal fluid, urine, or lymph node aspirate. In addition, the identification of acid-fast bacilli in sputum by another health center or adenosine deaminase (ADA) ≥ 40 U/mL in pleural fluid [20], ≥ 35 U/mL in pericardial fluid [4], and ≥ 30 U/mL in ascitic fluid [21] were accepted as microbiological confirmation.

Probable tuberculosis was defined as negative microbiological tests in a patient in whom antituberculosis therapy (prescribed based on clinical suspicion or on chest x-ray) in the absence of an alternative diagnosis led to a resolution of clinical signs and symptoms, radiographic and sonographic signs, and to an increase in body weight documented 2 months after start of antituberculosis treatment.

No tuberculosis was defined as consistently negative microbiological tests in a patient in whom signs and symptoms, radiographic, and sonographic signs subsided during follow-up and body weight increased without antituberculosis treatment, or if a patient with negative microbiological results had no resolution of clinical, radiographic, or sonographic signs during follow-up despite empirical antituberculosis treatment.

Abnormal chest x-ray was defined as the presence of upper lobe or any other infiltrate, cavernous lesion, miliary infiltrates, or pleural effusion on chest radiogram in posterior to anterior projection.

Statistical Analysis

Basic demographic characteristics, clinical and laboratory parameters, chest x-ray, and FASH signs were compared according to diagnosis of (1) confirmed tuberculosis versus no tuberculosis and (2) confirmed or probable tuberculosis versus no tuberculosis. We chose confirmed tuberculosis as the primary outcome, because it reflects the microbiological reference standard. As a secondary outcome, we chose the composite reference standard of confirmed or probable tuberculosis as a clinically relevant outcome [22]. We used χ^2 test or Fisher's exact test for categorical variables and the Mann-Whitney U test for continuous variables. Logistic regression was used to estimate the prediction of confirmed and confirmed or probable tuberculosis according to different clinical and radiological criteria including FASH. A backward stepwise multivariable logistic regression analysis on the selected variables to form the prediction model (entry criteria = $P < .05$; removal criteria = $P \geq .10$) was used. We retained those variables that are known to be associated with tuberculosis (younger age, male sex, HIV infection, lower body mass index). Likelihood ratio tests were used to measure goodness of the fit of the regression models. Results

are presented as crude and adjusted odds ratios (ORs) after adjusting for potential confounders as indicated. Finally, we checked the models for any interactions. Patients with missing baseline- or follow-up data were excluded from analysis. All analyses were performed using STATA software version 13 for Windows (Stata Corp., College Station, TX).

Ethical Statement

The study was approved by the Swiss ethics committee Ethikkommission Nordwest und Zentralschweiz (Nr 2015/243) and the ethics committees of the Ifakara Health Institute (Institutional Review Board, IHI/IRB/No 02-2016) and the National Institute for Medical Research, Tanzania (Ref. NIMR/HQ/R.8a/Vol. IX/2244). All participants signed an informed consent form.

RESULTS

From July 2016 through to June 2017, 261 patients were enrolled. Seventy patients were excluded: 64 with negative microbiological results at baseline and insufficient follow-up information to classify them as confirmed, probable, or no tuberculosis, and 6 with insufficient baseline information. Overall, 191 patients were included in the final analysis; of these, 100 (52.4%) were HIV-positive and 36 (18.8%) were hospitalized. A total of 41 (21.5%) patients were clinically suspected to have pulmonary tuberculosis only, 7 (3.7%) were suspected to have extrapulmonary tuberculosis only, and 143 (74.9%) were suspected to have combined extrapulmonary and pulmonary tuberculosis. After 6 months follow-up, 110 (57.6%) patients had a final diagnosis of confirmed tuberculosis, 25 (13.1%) had a diagnosis of probable tuberculosis, and 56 (29.3%) had no tuberculosis (Figure 1).

Table 1 shows baseline characteristics according to the final diagnosis. Compared to patients with no tuberculosis, patients with confirmed tuberculosis were younger, were more likely to be male, had a lower body mass index, reported weight loss more frequently, were less likely to be HIV-positive, and had distinct clinical presentations (higher temperature, lower oxygen saturation, more frequent lymphadenopathy, and abnormal chest x-ray). On sonography, patients with confirmed tuberculosis had significantly more signs of pleural effusion, pleural fibrin strands, abdominal lymphadenopathy, hepatomegaly, or ≥ 1 original FASH sign than patients with no tuberculosis.

Of the 11 (6%) patients with hypoechoic lesions in the liver or spleen (median diameter 10.3 mm, range 4–32 mm), all but 1 were HIV-positive, and all had confirmed ($n = 10$) or probable ($n = 1$) tuberculosis. There was no difference in the occurrence of ascites between the 2 groups. Of the 110 patients with confirmed tuberculosis, only 7 (6.3%) had a body temperature below 37.5°C together with a normal chest x-ray, and 6 of these had a positive FASH. When patients with confirmed or probable tuberculosis were compared with patients without

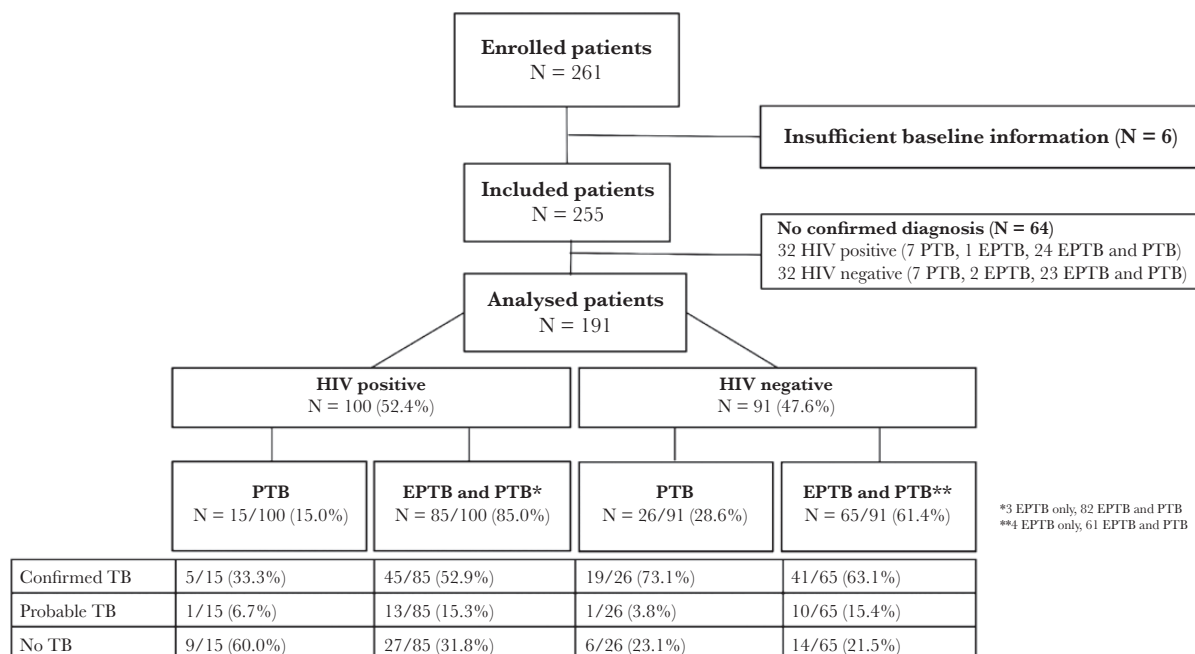


Figure 1. Enrollment of patients. Patients are presented according human immunodeficiency virus (HIV) status and final diagnosis reached. No confirmed diagnosis, no confirmed tuberculosis (TB) at inclusion, and lost to follow-up; confirmed TB, microbiologically confirmed TB; PTB, pulmonary tuberculosis; EPTB, extrapulmonary tuberculosis; EPTB and PTB, presence of EPTB and PTB in a patient.

tuberculosis, results were similar (see [Supplementary Table S2](#)). [Supplementary Table S3](#) shows the baseline characteristics of the 64 patients lost to follow-up.

Association of Clinical, Radiographic, and Sonographic Signs With Confirmed Tuberculosis

Univariate and multivariate regression models of predictors of confirmed tuberculosis versus no tuberculosis are shown in [Tables 2](#) and [3](#), respectively. In the univariate model, older age (OR = 0.67; 95% confidence interval [CI], 0.53–0.85; $P < .001$), female sex (OR = 0.46; 95% CI, 0.24–0.88; $P = .020$), body mass index (OR = 0.37; 95% CI, 0.23–0.59; $P < .001$, per 5 kg/m² increase), HIV infection (OR = 0.46; 95% CI, 0.24–0.89; $P = .023$), and presence of abdominal symptoms (OR = 0.27; 95% CI, 0.13–0.53; $P < .001$) were negatively associated with confirmed tuberculosis. Higher body temperature (OR = 3.2; 95% CI, 2.00–5.12; $P < .001$) and abnormal chest x-ray (OR = 6.32; 95% CI, 2.83–14.2; $P < .001$) were positively associated with confirmed tuberculosis. From the FASH signs, abdominal lymphadenopathy (OR = 7.14; 95% CI, 1.62–31.5; $P = .009$) and ≥ 1 original FASH sign (OR = 3.11; 95% CI, 1.56–6.21; $P = .001$) was associated with confirmed tuberculosis. We found no significant association between pleural effusion, pericardial effusion, ascites, or thickened ileum wall and confirmed tuberculosis. In the multivariate regression model, the association of increased body temperature (OR = 2.48; 95% CI, 1.52–5.03; $P = .001$ per each °C increase), pathological chest x-ray (OR = 6.19; 95% CI, 1.96–19.6; $P = .002$), and ≥ 1 original FASH signs (OR = 3.33; 95% CI, 1.21–9.12; $P = .019$) remained

significant with confirmed tuberculosis. [Supplementary Tables S4](#) and [S5](#) show the univariate and multivariate regression models of predictors of the composite outcome of confirmed or probable tuberculosis versus no tuberculosis. The results were similar except that pleural effusion in FASH (OR = 3.63; 95% CI, 1.44–9.14; $P = .006$) and pleural fibrin strands (OR = 5.84; 95% CI, 1.33–25.6; $P = .019$) were significantly associated with confirmed or probable tuberculosis in the univariate model. Analyzing only patients with signs of extrapulmonary tuberculosis (N = 150), no relevant difference was found (data not shown).

Sensitivity, Specificity, and Predictive Values of Clinical, Radiographic, and Sonographic Signs

[Table 4](#) shows sensitivity and specificity for the most important clinical and FASH signs. The combination ≥ 1 original FASH sign, abnormal chest x-ray, and body temperature $\geq 37.5^\circ\text{C}$ had a sensitivity of 99.1% (95% CI, 94.9–99.9), a specificity of 35.2% (95% CI, 22.7–49.4), a positive predictive value of 75.2% (95% CI, 71.3–78.7), and a negative predictive value of 95.0% (95% CI, 72.3–99.3). This did not change substantially if the composite outcome confirmed or probable tuberculosis versus no tuberculosis was analyzed (see [Supplementary Table S6](#)).

Microbiological Results in Patients With Confirmed Tuberculosis

Of 110 patients with a microbiologically confirmed tuberculosis, 80 were sputum-positive. Thirty patients had no sputum or a negative sputum assay. Of these 30 patients, 5 had a positive Xpert MTB/RIF assay in urine, 3 had a positive assay in pleural

Table 1. Patient's Characteristics According to Diagnosis Confirmed TB Versus No TB

Characteristic	Confirmed TB		No TB		P Value
	N = 110	N = 56	N	% or IQR	
Median age, years	36.5	27.1–43.3	41.5	34.2–57.3	.002
Male sex	70	63.6	25	44.6	.019
Body mass index, kg/m ²	18.3	16.7–20.6	21.2	19.1–23.8	<.001
HIV infection	50	45.5	36	64.3	.022
Symptoms					
Fever	74	67.3	36	64.3	.700
Cough	104	94.5	49	87.5	.110
Hemoptysis	20	18.8	10	17.9	.959
Dyspnea	55	50.0	30	53.6	.663
Chest pain	67	60.9	40	71.4	.181
Night sweats	74	67.3	29	51.8	.052
Weight loss	86	78.9	33	62.3	.024
Abdominal symptoms	44	40.0	40	71.4	<.001
Neurological symptoms	29	26.4	15	26.8	.954
Clinical signs					
Median temperature, °C	37.4	36.7–38.0	36.6	36.0–37.0	<.001
Median SaO ₂	97	95–98	98	96–98	.026
Pulmonary signs ^a	76	69.1	28	50.0	.016
Cardiac signs ^b	8	7.3	6	10.7	.451
Abdominal signs ^c	64	58.2	33	58.9	.926
Lymphadenopathy ^d	70	63.4	24	42.9	.011
Chest x-ray					
Upper lobe infiltrates	64	58.2	12	21.4	<.001
Cavernous lesion	36	32.7	1	1.8	<.001
Miliary infiltrates	3	2.2	1	1.8	.664
Other infiltrates	65	59.0	21	37.5	.077
Pleural effusion	23	20.9	6	10.7	.111
Clinical TB					
PTB	24	21.8	15	26.8	.061
EPTB	2	1.8	5	8.9	
EPTB and PTB	84	76.4	36	64.3	
Original FASH signs					
Pleural effusion	26	23.6	6	10.7	.046
Pericardial effusion	20	18.8	5	8.9	.086
Ascites	28	25.5	11	19.6	.404
Abdominal LN	23	20.9	2	3.6	.002
Hypoechogenic lesions in liver/spleen	10	9.1	0	-	-
Ileum wall thickening	7	6.4	3	5.4	.604
Ileum wall destruction	6	5.4	4	7.1	.410
Additional sonographic signs					
Splenomegaly	29	26.3	16	29.1	.711
Hepatomegaly	58	52.7	20	35.7	.038
Pleural fibrin strands	14	12.7	2	3.6	.047
Pericardial fibrin strands	2	1.8	0	-	-
≥1 original FASH sign	61	55.5	16	28.6	.001
≥1 sonographic sign ^e	88	80.0	38	67.9	.084
Number of sonographic signs ^e					
0	22	20.0	18	32.1	.038
1	34	30.9	21	37.5	
2	16	14.6	7	12.5	
≥3	38	34.5	10	17.9	

P values in bold numbers indicate that the difference is statistically significant.

Abbreviations: abdominal LN, abdominal lymph nodes >1.5 cm; EPTB, extrapulmonary tuberculosis; FASH, focused assessment with sonography for HIV-associated tuberculosis; HIV, human immunodeficiency virus; IQR, interquartile range; LN, lymph nodes; PTB, pulmonary tuberculosis, SaO₂, oxygen saturation; TB, tuberculosis.

^aPulmonary signs included crackles, wheezing, pleural friction in lung auscultation, or dullness in lung percussion.

^bCardiac signs were dilated jugular veins, lateralized apex beat, or heart murmur.

^cAbdominal signs included organomegaly, ascites, and abnormal bowel sound.

^dLymphadenopathy was diagnosed if palpable enlarged axillary, cervical, or nuchal lymph nodes were present on physical examination.

^ePresence of at least any of the original FASH sign and/or splenomegaly, hepatomegaly, or pleural- or pericardial fibrin strands.

fluid, and 3 had a positive assay in lymph node aspirates. Positive sputum cultures were found in 9 patients with an initially negative Xpert MTB/RIF assay, confirmed to be *M tuberculosis*. In 7

patients, tuberculosis was diagnosed by elevated ADA alone (3 in pleural fluid, 2 in pericardial fluid, and 2 in ascitic fluid). One patient tested positive only on pleural fluid culture, and 1 patient

Table 2. Predictors of Confirmed Tuberculosis Versus No Tuberculosis (Univariate Logistic Regression)

Predictor	Odds Ratios	95% CI	P Value	
Age, per 10 years older	0.67	0.53–0.85	<.001	
Female versus male	0.46	0.24–0.88	.020	
Body mass index, per 5 kg/m ² increase	0.37	0.23–0.59	<.001	
HIV infection	0.46	0.24–0.89	.023	
Fever	1.14	0.58–2.24	.700	
Cough	2.47	0.79–7.76	.120	
Hemoptysis	1.02	0.44–2.36	.959	
Dyspnea	0.87	0.45–1.65	.663	
Chest pain	0.62	0.31–1.25	.182	
Night sweats	1.91	0.99–3.69	.053	
Weight loss	2.26	1.10–4.66	.026	
Abdominal symptoms	0.27	0.13–0.53	<.001	
Neurological symptoms	0.98	0.47–2.03	.954	
Temperature, per each °C increase	3.20	2.00–5.12	<.001	
SaO ₂	0.87	0.75–1.02	.071	
Pulmonary signs ^a	2.23	1.15–4.33	.017	
Cardiac signs ^b	0.65	0.22–1.98	.453	
Abdominal signs ^c	0.97	0.50–1.86	.926	
Lymphadenopathy ^d	2.33	1.20–4.49	.011	
Chest x-ray	Upper lobe infiltrates	5.09	2.41–10.8	<.001
	Cavernous lesion	26.9	3.57–202.3	.001
	Miliary infiltrates	1.54	0.15–15.3	.710
	Other infiltrates	2.37	1.22–4.64	.011
	Pleural effusion	2.16	0.82–5.68	.117
Original FASH signs	Abnormal chest x-ray	6.32	2.83–14.2	<.001
	Pleural effusion	3.58	0.99–6.70	.052
	Pericardial effusion	2.27	0.80–6.40	.122
	Ascites	1.39	0.63–3.07	.405
	Abdominal LN	7.14	1.62–31.5	.009
Additional sonographic signs	Mesenterial LN	1.77	1.27–2.45	.001
	Splenomegaly	0.87	0.41–1.79	.711
	Hepatomegaly	2.01	1.03–3.89	.039
	Pleural fibrin	3.94	0.86–17.9	.077
	Ileum wall thickening	1.20	0.29–4.83	.797
Ileum wall destruction	0.50	0.20–2.77	.666	
≥1 original FASH sign	3.11	1.56–6.21	.001	
Number of any sonographic sign ^e	0	-	-	-
	1	1.32	0.58–3.02	.505
	2	1.87	0.63–5.53	.258
	≥3	3.11	1.22–7.91	.017

P values in bold numbers indicate that the association is statistically significant.

Abbreviations: CI, confidence interval; EPTB, extrapulmonary tuberculosis; FASH, focused assessment with sonography for HIV-associated tuberculosis; HIV, human immunodeficiency virus; LN, lymph nodes; PTB pulmonary tuberculosis; SaO₂, oxygen saturation.

^aPulmonary signs included crackles, wheezing, pleural friction in lung auscultation, or dullness in lung percussion.

^bCardiac signs included dilated jugular veins, lateralised apex beat, or heart murmur.

^cAbdominal signs were organomegaly, ascites, and abnormal bowel sounds.

^dLymphadenopathy included palpable enlarged axillary, cervical, or nuchal lymph nodes on physical examination.

^ePresence of at least any of the original FASH criteria and/or splenomegaly, hepatomegaly, or pleural- or pericardial fibrin strands.

tested positive only on ascites culture. One patient had only a positive acid-fast bacilli microscopy (see [Supplementary Table S7](#)). We did not note any adverse events after puncturing procedures.

DISCUSSION

In this prospective, observational cohort study of HIV-positive and -negative patients with suspected tuberculosis,

we found that the combination of ≥1 original FASH sign, an abnormal chest-x ray, and a body temperature of ≥37.5°C had an excellent sensitivity and negative predictive value for tuberculosis. All but 1 patient with hypoechoic splenic or hepatic lesions had confirmed tuberculosis. The 2 most common FASH signs, abdominal lymphadenopathy and pleural effusion, were associated with tuberculosis, the latter with the

Table 3. Predictors of Confirmed Tuberculosis (n = 110 vs 56): Multivariate Logistic Regression

Predictor	Odds Ratios	95% CI	P Value
Age, per 10 years older	0.72	0.51–1.00	.054
Female versus male	0.75	0.38–2.67	.971
Body mass index, per 5 kg/m ² increase	0.87	0.74–1.03	.087
HIV infection	0.61	0.21–1.75	.361
Cough	2.63	0.50–13.7	.251
Night sweats	0.68	0.25–1.84	.444
Weight loss	0.77	0.22–2.74	.688
Temperature, per each °C increase	2.48	1.52–5.03	.001
Pulmonary signs ^a	1.10	0.39–3.05	.859
Abdominal signs ^b	0.71	0.26–1.90	.493
Lymphadenopathy ^c	1.68	0.58–4.83	.338
Abnormal chest x-ray ^d	6.19	1.96–19.6	.002
≥1 FASH sign	3.33	1.21–9.12	.019

Odds ratios were adjusted for all variables listed; ≥1 FASH sign, presence of at least 1 original FASH sign. P values in bold numbers indicate that the association is statistically significant.

Abbreviations: CI, confidence interval; FASH, focused assessment with sonography for HIV-associated tuberculosis; HIV, human immunodeficiency virus.

^aPulmonary signs included crackles, wheezing, pleural friction in lung auscultation, or dullness in lung percussion.

^bAbdominal signs included organomegaly, ascites, and abnormal bowel sound.

^cLymphadenopathy was diagnosed if palpable enlarged axillary, cervical, or nuchal lymph nodes were present on physical examination.

^dAbnormal chest radiogram included any infiltrate, cavernous lesions, miliary pattern, or pleural effusion.

composite outcome confirmed or probable tuberculosis only. This composite outcome is clinically relevant, because culture as the gold standard is not always available, and its sensitivity is suboptimal [22, 23].

The positive association between hypoechoic splenic or hepatic lesions, abdominal lymphadenopathy, and pleural effusion with tuberculosis is in agreement with a recently published study from India where 27% of 285 patients with confirmed or

probable tuberculosis had pleural effusion, 14% had abdominal lymphadenopathy, and 6% had splenic or liver lesions [15]. The major difference to our study was the comparably low proportion of HIV-infected patients (20%) and the lack of follow-up by ultrasound in that study. Previous studies in HIV-positive patients in South Africa and Italy have reported even higher rates of FASH signs with 76% abdominal lymphadenopathy and 41% spleen and 31% liver lesions [12, 13]. However, these populations were small, and microbiologically confirmed tuberculosis was present in only a minority of patients.

Although pericardial effusion was more than twice as frequent in patients with tuberculosis as in patients without tuberculosis, we could not demonstrate a significant association in our study. Tuberculosis has been reported as the cause of pericardial effusions in 70% of South African patients, indicating other possible causes, eg, viral, malignancy, or connective tissue disease [24]. Thickened ileum wall might have been caused by other bacterial infections or chronic inflammatory diseases, and it was not associated with tuberculosis in our study. Ascites has a broad differential diagnosis, eg, pelvic inflammatory disease, liver or kidney disease, heart failure, or cancer [25, 26]. Thus, other diseases than tuberculosis should be considered and looked for in a patient with thickened ileum wall or ascites.

Fever and upper lobe infiltrate in chest x-ray are known signs of tuberculosis and were the strongest predictors of pulmonary tuberculosis in hospitalized HIV-positive and -negative patients in North America [27, 28]. Besides presence of cough and night sweats, fever of any duration was a predictor for tuberculosis in HIV-positive outpatients in Southeast Asia [29].

In contrast to the high sensitivity of the combination of FASH, chest x-ray, and body temperature, specificity of this combination and of most FASH signs was poor. Although the absence of sonographic and radiographic signs combined

Table 4. Sensitivity, Specificity, Predictive Values, and Accuracy of the Most Important Test Combinations Predicting Confirmed Tuberculosis (n = 166)

Predictor	Sensitivity	Specificity	PPV	NPV	Accuracy
	% (95% CI)	% (95% CI)	% (95% CI)	% (95% CI)	% (95% CI)
≥1 FASH sign	55.5 (45.7–64.9)	60.6 (47.8–72.4)	70.1 (62.5–76.8)	44.9 (38.5–52.1)	57.4 (49.7–64.8)
Abnormal chest x-ray	88.8 (81.2–94.1)	44.4 (30.9–58.6)	76.0 (71.2–80.2)	66.7 (52.1–78.7)	73.9 (66.4–80.5)
Measured T ≥37.5°	41.8 (32.5–51.6)	96.4 (87.7–99.6)	95.8 (85.3–98.9)	45.8 (41.7–49.9)	60.2 (52.5–67.7)
Constitutional symptoms ^a	96.3 (90.9–98.9)	17.0 (8.1–29.8)	70.5 (67.8–73.1)	69.2 (42.1–87.5)	70.4 (62.7–77.3)
Cough	94.6 (88.5–97.9)	12.5 (5.2–24.1)	68.0 (65.6–70.3)	53.9 (29.2–76.8)	66.9 (59.2–74.0)
Lymphadenopathy in clinical exam	63.6 (53.9–72.6)	57.1 (43.2–70.3)	74.5 (67.6–80.3)	44.4 (36.4–52.8)	61.4 (53.6–68.9)
Constitutional symptoms ^a and T ≥37.5°	41.3 (31.9–51.1)	96.2 (87.0–99.5)	95.7 (85.0–98.9)	44.4 (40.3–48.5)	59.3 (51.3–66.9)
≥1 FASH sign and T ≥37.5°	75.5 (66.3–83.2)	67.9 (54.0–79.7)	82.2 (75.6–87.3)	58.5 (49.2–67.2)	72.9 (65.5–79.5)
Abnormal chest x-ray and T ≥37.5°	92.5 (85.8–96.7)	42.6 (29.3–56.8)	76.2 (71.6–80.2)	74.2 (57.9–85.7)	75.8 (68.4–82.2)
≥1 FASH sign and abnormal chest x-ray	98.1 (93.4–99.8)	37.0 (24.3–51.3)	75.5 (71.5–79.2)	90.9 (70.8–97.6)	77.6 (70.4–83.8)
≥1 FASH sign and abnormal chest x-ray and T ≥37.5°	99.1 (94.9–99.9)	35.2 (22.7–49.4)	75.2 (71.3–78.7)	95.0 (72.3–99.3)	77.6 (70.4–83.8)

Abbreviations: CI, confidence interval; FASH, focused assessment with sonography for HIV-associated tuberculosis; NPV, negative predictive value; PPV, positive predictive value; T, body temperature.

NOTE: ≥1 FASH sign, presence of at least 1 original FASH sign.

^aHistory of weight loss, night sweat, or fever.

with a temperature $<37.5^{\circ}\text{C}$ might lower the probability of tuberculosis substantially, the presence of those signs would not confirm it. On the other hand, Xpert MTB/RIF assay has a high specificity of up to 99% in sputum and body fluids, and it is easy to handle even under difficult working environments [30]. However, the sensitivity of the Xpert MTB/RIF assay is reduced in HIV-positive individuals, patients with paucibacillary disease, and in extrapulmonary tuberculosis with low amounts of mycobacteria in pleural and other body fluids [4–7]. In these circumstances, overtreatment would not be reduced by implementing the Xpert MTB/RIF assay only, especially in an environment of high pretest probability for tuberculosis [2]. Thus, a diagnostic process including the combination of clinical, sonographic, radiographic, and microbiological findings might increase the rate of appropriate decisions on whether to treat patients with antituberculosis drugs.

In case of negative microbiology, normal chest x-ray, and absent FASH signs or presence of ascites only, empirical antituberculosis therapy might be safely withheld, and further tests such as full abdominal sonography and laboratory tests to examine for other diseases than tuberculosis might be done. In presence of pleural effusion, abdominal lymphadenopathy, or pericardial effusion, empirical antituberculosis therapy might be considered and started if tuberculoma in liver or spleen were detected. This is being studied in a randomized controlled trial (registration number: PACTR201712002829221).

Our study had limitations. First, 70 patients were excluded because of insufficient information or loss to follow-up. The 64 patients lost to follow-up resembled the group of patients with tuberculosis. Therefore, independent predictors for tuberculosis remained stable in the statistical models. Second, because the study was observational, the performance of FASH might have affected physicians' treatment choices, because the results were not blinded. Third, we could not verify tuberculosis as the cause for every single FASH sign in a patient with confirmed disease, because confirmed tuberculosis was defined as ≥ 1 positive microbiological result, regardless where the sample was taken from. Furthermore, we cannot exclude (1) other disease agents in patients with probable tuberculosis or (2) drug resistance in patients who were classified as having no tuberculosis and did not improve on antituberculosis therapy. However, we did not find any drug resistance in our study population, and the estimated percentage of multidrug resistance cases in Tanzania is only 0.9% among new tuberculosis cases [1]. Fourth, we were not able to perform an analysis stratified by pulmonary and extrapulmonary tuberculosis, because three fourths of the patients had both pulmonary and extrapulmonary tuberculosis. Fifth, the study was done in a referral center, where the patient population might differ from primary care centers. Thus, results should be interpreted in

this context. Finally, this was a single-center study done in rural Tanzania, and our results might not be generalizable to centers in higher-income countries.

CONCLUSIONS

In conclusion, the combination of ≥ 1 original FASH sign, an abnormal chest x-ray, and a body temperature of $\geq 37.5^{\circ}\text{C}$ had an excellent sensitivity and negative predictive value for tuberculosis. Its absence may substantially decrease the probability of tuberculosis in HIV-positive and -negative patients with clinically suspected pulmonary or extrapulmonary tuberculosis. This may help clinicians in deciding whether to withhold empirical antituberculosis therapy and might reduce overtreatment of tuberculosis.

Supplementary Data

Supplementary materials are available at *Open Forum Infectious Diseases* online. Consisting of data provided by the authors to benefit the reader, the posted materials are not copyedited and are the sole responsibility of the authors, so questions or comments should be addressed to the corresponding author.

Acknowledgments

We thank Peele Stolt for language editing.

Author contributions. M. R. and M. W. contributed to study design, data collection, data analysis, and manuscript writing. R. N. contributed to manuscript writing, data collection, and data analysis. L. E. performed statistical analyses. F. D., F. B., G. S., H. M., W. G., and E. M. contributed to data collection. L. K. and D. M. performed microbiological tests. M. B. and K. R. contributed to study design and manuscript writing. D. H. P. contributed to manuscript writing.

Financial support. M. R. received the funding for the project and takes the responsibility overall. This work was funded by the Foundation Freiwillige Akademische Gesellschaft (Basel, Switzerland).

Potential conflicts of interest. All authors: No reported conflicts of interest. All authors have submitted the ICMJE Form for Disclosure of Potential Conflicts of Interest.

References

1. World Health Organization. Global tuberculosis report 2018. Available at: https://www.who.int/tb/publications/global_report/en/. Accessed 12 April 2019.
2. Theron G, Peter J, Dowdy D, et al. Do high rates of empirical treatment undermine the potential effect of new diagnostic tests for tuberculosis in high-burden settings? *Lancet Infect Dis* 2014; 14:527–32.
3. Hanrahan CF, Selibas K, Deery CB, et al. Time to treatment and patient outcomes among TB suspects screened by a single point-of-care Xpert MTB/RIF at a primary care clinic in Johannesburg, South Africa. *PLoS One* 2013; 8:e65421.
4. Pandie S, Peter JG, Kerbelker ZS, et al. Diagnostic accuracy of quantitative PCR (Xpert MTB/RIF) for tuberculous pericarditis compared to adenosine deaminase and unstimulated interferon- γ in a high burden setting: a prospective study. *BMC Med* 2014; 12:101.
5. Kohli M, Schiller I, Dendukuri N, et al. Xpert[®] MTB/RIF assay for extrapulmonary tuberculosis and rifampicin resistance. *Cochrane Database Syst Rev* 2018; 8:CD012768.
6. Steingart KR, Schiller I, Horne DJ, et al. Xpert[®] MTB/RIF assay for pulmonary tuberculosis and rifampicin resistance in adults. *Cochrane Database Syst Rev* 2014; CD009593.
7. Dorman SE, Schumacher SG, Alland D, et al. Xpert MTB/RIF Ultra for detection of *Mycobacterium tuberculosis* and rifampicin resistance: a prospective multicentre diagnostic accuracy study. *Lancet Infect Dis* 2018; 18:76–84.
8. Walusimbi S, Bwanga F, De Costa A, et al. Meta-analysis to compare the accuracy of GeneXpert, MODS and the WHO 2007 algorithm for diagnosis of smear-negative pulmonary tuberculosis. *BMC Infect Dis* 2013; 13:507.
9. Heller T, Wallrauch C, Lessells RJ, et al. Short course for focused assessment with sonography for human immunodeficiency virus/tuberculosis: preliminary results

- in a rural setting in South Africa with high prevalence of human immunodeficiency virus and tuberculosis. *Am J Trop Med Hyg* **2010**; 82:512–5.
10. Heller T, Wallrauch C, Goblirsch S, Brunetti E. Focused assessment with sonography for HIV-associated tuberculosis (FASH): a short protocol and a pictorial review. *Crit Ultrasound J* **2012**; 4:21.
 11. Heller T, Goblirsch S, Wallrauch C, et al. Abdominal tuberculosis: sonographic diagnosis and treatment response in HIV-positive adults in rural South Africa. *Int J Infect Dis* **2010**; 14 (Suppl 3):e108–12.
 12. Heller T, Goblirsch S, Bahlas S, et al. Diagnostic value of FASH ultrasound and chest X-ray in HIV-co-infected patients with abdominal tuberculosis. *Int J Tuberc Lung Dis* **2013**; 17:342–4.
 13. Heller T, Wallrauch C, Brunetti E, Giordani MT. Changes of FASH ultrasound findings in TB-HIV patients during anti-tuberculosis treatment. *Int J Tuberc Lung Dis* **2014**; 18:837–9.
 14. Skoura E, Zumla A, Bomanji J. Imaging in tuberculosis. *Int J Infect Dis* **2015**; 32:87–93.
 15. Weber SE, Saravu K, Heller T, et al. Point-of-care ultrasound for extrapulmonary tuberculosis in India: a prospective cohort study in HIV-positive and HIV-negative presumptive tuberculosis patients. *Am J Trop Med Hyg* **2018**; 98:266–73.
 16. Letang E, Kalinjuma AV, Glass TR, et al. Cohort profile: the Kilombero and Ulanga antiretroviral cohort (KIULARCO)—a prospective HIV cohort in rural Tanzania. *Swiss Med Wkly* **2017**; 147:w14485.
 17. Vanobberghen F, Letang E, Gamell A, et al. A decade of HIV care in rural Tanzania: trends in clinical outcomes and impact of clinic optimisation in an open, prospective cohort. *PLoS One* **2017**; 12:e0180983.
 18. Kerkhoff AD, Wood R, Cobelens FG, et al. The predictive value of current haemoglobin levels for incident tuberculosis and/or mortality during long-term antiretroviral therapy in South Africa: a cohort study. *BMC Med* **2015**; 13:70.
 19. Hiza H, Doulla B, Sasamalo M, et al. Preservation of sputum samples with cetylpyridinium chloride (CPC) for tuberculosis cultures and Xpert MTB/RIF in a low-income country. *BMC Infect Dis* **2017**; 17:542.
 20. Gui X, Xiao H. Diagnosis of tuberculosis pleurisy with adenosine deaminase (ADA): a systematic review and meta-analysis. *Int J Clin Exp Med* **2014**; 7:3126–35.
 21. Tao L, Ning HJ, Nie HM, et al. Diagnostic value of adenosine deaminase in ascites for tuberculosis ascites: a meta-analysis. *Diagn Microbiol Infect Dis* **2014**; 79:102–7.
 22. Mayosi BM, Ntsekhe M, Bosch J, et al. Prednisolone and *Mycobacterium indicus pranii* in tuberculous pericarditis. *N Engl J Med* **2014**; 371:1121–30.
 23. Morgan MA, Horstmeier CD, DeYoung DR, Roberts GD. Comparison of a radiometric method (BACTEC) and conventional culture media for recovery of mycobacteria from smear-negative specimens. *J Clin Microbiol* **1983**; 18:384–8.
 24. Reuter H, Burgess LJ, Doubell AF. Epidemiology of pericardial effusions at a large academic hospital in South Africa. *Epidemiol Infect* **2005**; 133:393–9.
 25. Brunham RC, Gottlieb SL, Paavonen J. Pelvic inflammatory disease. *N Engl J Med* **2015**; 372:2039–48.
 26. Dilauro S, Crum-Cianflone NE. Ileitis: when it is not Crohn's disease. *Curr Gastroenterol Rep* **2010**; 12:249–58.
 27. Wisnivesky JP, Kaplan J, Henschke C, et al. Evaluation of clinical parameters to predict *Mycobacterium tuberculosis* in inpatients. *Arch Intern Med* **2000**; 160:2471–6.
 28. Wisnivesky JP, Henschke C, Balentine J, et al. Prospective validation of a prediction model for isolating inpatients with suspected pulmonary tuberculosis. *Arch Intern Med* **2005**; 165:453–7.
 29. Cain KP, McCarthy KD, Heilig CM, et al. An algorithm for tuberculosis screening and diagnosis in people with HIV. *N Engl J Med* **2010**; 362:707–16.
 30. Boehme CC, Nabeta P, Hillemann D, et al. Rapid molecular detection of tuberculosis and rifampin resistance. *N Engl J Med* **2010**; 363:1005–15.