

RESEARCH ARTICLE

Polygenic risk scores for Alzheimer's disease are related to dementia risk in APOE ϵ 4 negatives

Jenna Najar^{1,2} | Sven J. van der Lee^{3,4} | Erik Joas¹ | Hanna Wetterberg¹ |
 John Hardy^{5,6,7,8,9} | Rita Guerreiro¹⁰ | Jose Bras¹⁰ | Margda Waern^{1,11} |
 Silke Kern^{1,2} | Henrik Zetterberg^{5,6,12,13} | Kaj Blennow^{12,13} | Ingmar Skoog^{1,2} |
 Anna Zettergren¹

¹ Department of Psychiatry and Neurochemistry, Neuropsychiatric Epidemiology Unit, Institute of Neuroscience and Physiology, the Sahlgrenska Academy, Centre for Ageing and Health (AGECAP), at the University of Gothenburg, Mölndal, Sweden

² Region Västra Götaland, Sahlgrenska University Hospital, Psychiatry, Cognition and Old Age Psychiatry Clinic, Gothenburg, Sweden

³ Section Genomics of Neurdegenerative Diseases and Aging, Department of Clinical Genetics, Vrije Universiteit Amsterdam, Amsterdam UMC, Amsterdam, The Netherlands

⁴ Alzheimer Center Amsterdam, Department of Neurology, Amsterdam Neuroscience, Vrije Universiteit Amsterdam, Amsterdam UMC, Amsterdam, The Netherlands

⁵ Department of Neurodegenerative Disease, UCL Institute of Neurology, London, UK

⁶ UK Dementia Research Institute at UCL, London, UK

⁷ Reta Lila Weston Institute, UCL Queen Square Institute of Neurology, London, UK

⁸ NIHR University College London Hospitals Biomedical Research Centre, London, UK

⁹ Institute of Advanced Study, the Hong Kong University of Science and Technology, Hong Kong, SAR, China

¹⁰ Center for Neurodegenerative Science, Van Andel Institute, Grand Rapids, Michigan, USA

¹¹ Region Västra Götaland, Sahlgrenska University Hospital, Psychosis Clinic, Gothenburg, Sweden

¹² Department of Psychiatry and Neurochemistry, Institute of Neuroscience and Physiology, The Sahlgrenska Academy at the University of Gothenburg, Mölndal, Sweden

¹³ Clinical Neurochemistry Laboratory, Sahlgrenska University Hospital, Mölndal, Sweden

Correspondence

Jenna Najar, Department of Psychiatry and Neurochemistry, Neuropsychiatric Epidemiology Unit, Institute of Neuroscience and Physiology, the Sahlgrenska Academy, Centre for Ageing and Health (AGECAP), at the University of Gothenburg, Wallingsgatan 6, 431 41, Mölndal, Sweden.
 E-mail: jenna.najar@gu.se

Ingmar Skoog and Anna Zettergren share last authorship.

Funding information

Swedish state under the agreement between the Swedish government and the county councils; the Swedish State Support for Clinical Research, Grant/Award Numbers: ALF 716681, ALFGBG-81392, ALFGBG-715986,

Abstract

Introduction: Studies examining the effect of polygenic risk scores (PRS) for Alzheimer's disease (AD) and apolipoprotein E (APOE) genotype on incident dementia in very old individuals are lacking.

Methods: A population-based sample of 2052 individuals ages 70 to 111, from Sweden, was followed in relation to dementia. AD-PRSs including 39, 57, 1333, and 13,942 single nucleotide polymorphisms (SNPs) were used.

Results: AD-PRSs (including 39 or 57 SNPs) were associated with dementia (57-SNPs AD-PRS: hazard ratio 1.09, confidence interval 1.01–1.19, $P = .03$), particularly in APOE ϵ 4 non-carriers (57-SNPs AD-PRS: 1.15, 1.05–1.27, $P = 4 \times 10^{-3}$, 39-SNPs AD-PRS: 1.22, 1.10–1.35, $P = 2 \times 10^{-4}$). No association was found with the other AD-PRSs. Further, APOE ϵ 4 was associated with increased risk of dementia (1.60, 1.35–1.92,

This is an open access article under the terms of the [Creative Commons Attribution](https://creativecommons.org/licenses/by/4.0/) License, which permits use, distribution and reproduction in any medium, provided the original work is properly cited.

© 2021 The Authors. *Alzheimer's & Dementia: Diagnosis, Assessment & Disease Monitoring* published by Wiley Periodicals, LLC on behalf of Alzheimer's Association

ALFGBG-720931, ALFGBG-81392, ALFGBG-771071; the Swedish Research Council, Grant/Award Numbers: 11267, 825-2012-5041, 2013-8717, 2015-02830, 2017-00639, 2017-00915, 2018-02532, 2019-01096, 2019-02075, 2018-02532; Swedish Research Council for Health, Working Life and Welfare, Grant/Award Numbers: 2001-2646, 2001-2835, 2001-2849, 2003-0234, 2004-0150, 2005-0762, 2006-0020, 2008-1229, 2008-1210, 2012-1138, 2004-0145, 2006-0596, 2008-1111, 2010-0870, 2013-1202, 2013-2300, 2013-2496; Swedish Alzheimer Foundation, Grant/Award Numbers: AF-742881, AF-930582, AF-646061, AF-741361, AF-842471, AF-737641; Swedish Brain Power, Hjärnfonden, Sweden, Grant/Award Numbers: FO2016-0214, FO2017-0243, FO2018-0214, FO2019-0163; The Alzheimer's Association Zenith Award, Grant/Award Number: ZEN-01-3151; The Alzheimer's Association Stephanie B. Overstreet Scholars, Grant/Award Number: IIRG-00-2159; The Alzheimer's Association, Grant/Award Numbers: IIRG-03-6168, IIRG-09-131338; The Bank of Sweden Tercentenary Foundation; Stiftelsen Söderström-Königska Sjukhemmet; Magnus Bergvalls Stiftelse; Stiftelsen för Gamla Tjänarinnor; Handlanden Hjalmar Svenssons Forskningsfond; Fredrik och Ingrid Thuring's Stiftelse, Grant/Award Number: 2019-00522; UK Medical Research Council, Alzheimer's Society and Alzheimer's Research UK; Medical Research Council, Grant/Award Number: MR/N026004/1; Wellcome Trust Hardy, Grant/Award Number: 202903/Z/16/Z; Dolby Family Fund, National Institute of Health Research University College London Hospitals Biomedical Research Centre; National Institute for Health Research University College London Hospitals Biomedical Research Centre; European Research Council, Grant/Award Number: 81712; Alzheimer Drug Discovery Foundation (ADDF), USA, Grant/Award Number: 201809-2016862; Alzheimer Drug Discovery Foundation, Grant/Award Number: RDAPB-201809-2016615; European Union Joint Program for Neurodegenerative Disorders, Grant/Award Number: JPND2019-466-236

$P = 1 \times 10^{-7}$). In those aged ≥ 95 years, the results were similar for the AD-PRSs, while *APOE* $\epsilon 4$ only predicted dementia in the low-risk tertile of AD-PRSs.

Discussion: These results provide information to identify individuals at increased risk of dementia.

KEYWORDS

Alzheimer's disease, apolipoprotein E genotype, dementia, polygenic risk score, risk factors in epidemiology

1 | BACKGROUND

In addition to the apolipoprotein E (*APOE*) gene, Alzheimer's disease (AD)-associated single nucleotide polymorphisms (SNPs) have been identified through genome-wide association studies (GWASs).¹⁻³ These variants are usually combined into polygenic risk scores (PRSs), representing the accumulated effect of variants associated with AD.⁴ PRSs for AD (AD-PRS) have been associated with AD and dementia in clinical⁵⁻⁹ and population-based samples.¹⁰⁻¹³ Thus far, population-based studies mainly included individuals around age 60 years and the number of participants above age 95 years was relatively low.

Previous studies examining the effect of *APOE* genotype¹⁴⁻¹⁶ and other candidate genes^{17,18} on cognitive impairment among the oldest old have generated conflicting results. The 90+ study (hazard ratio [HR] 1.04; 95% confidence interval [CI] 0.71-1.53) and the Vantaa 85+ study (HR 1.78; 95% CI 0.88-3.60) did not find an effect of the *APOE* $\epsilon 4$ allele on dementia risk,^{14,16} while the Leiden 85+ study found an increased dementia risk among *APOE* $\epsilon 4$ carriers (odds ratio [OR] 4.1; 95% CI 2.1-8.4).¹⁵ The Rotterdam study reported an effect of AD-PRS (including 23 SNPs) on dementia, with the strongest effects in *APOE* $\epsilon 4$ carriers.¹⁰ However, none of these studies investigated the effect of AD-PRSs and the possible interaction with *APOE* genotypes on dementia risk in very old individuals.

We examined the effect of AD-PRSs and *APOE* genotype on incident dementia, in a large population-based study of individuals aged 70 to 111 years. We studied if the AD-PRSs, the *APOE* genotype, and the interaction of these, predicted risk of dementia by analyzing the full age spectrum, as well as subgroups aged 70 to 94 years and 95 years or older.

2 | METHODS

2.1 | Study population

We used a population-based sample of 3612 participants (1257 men, 2355 women), aged 70 to 111 years, with genotyped data from the Gothenburg H70 Birth Cohort Studies (including the H70, H75, H85, and H95+ studies, and the Prospective Population Study of Women). The participants were all residents of Gothenburg, Sweden, and were born 1901–1911, 1914, 1918, 1922–1924, 1930, or 1944. They were systematically selected from the Swedish Population Registry based on specific birth dates to yield representative samples at the ages studied.^{19–23} All participants were examined at least once between 2000 and 2016. Age at first examination ranged from 70 to 100 years.

In total, 3467 of 3612 had genotyped data after performing quality control (QC), of which 3449 (1196 men and 2253 women) had data on dementia status (see assessment procedures, sections 2.6 and 2.7). After exclusion of 266 persons with dementia at baseline, 3183 participants were eligible for the present follow-up study. Of these, 1118 were excluded due to having cross-sectional information only and 13 died within a year of baseline, leaving 2052 participants for the analytic sample (Figure 1).

The total sample was stratified based on age at blood sampling (70–94 years and ≥ 95 years). In those aged 70 to 94 years, 1717 were followed in relation to incident dementia and 387 developed dementia. Among those aged ≥ 95 years, 335 were followed in relation to incident dementia and 219 developed dementia (Figure 1).

2.2 | Standard protocol approvals, registrations, and patient consents

The Ethics Committee for Medical Research at the University of Gothenburg approved the study and all participants gave informed consent to participate according to the Declaration of Helsinki.

2.3 | Genetic analysis

Blood sampling for genetic analyses was performed in 2000–2011 and 2014–2016. Mean age at blood sampling was 80 years (standard deviation [SD] 9.5 years). Genotyping was performed with the NeuroChip (Illumina).²⁴ QC included the removal of participants due to any of the following: per-sample call rate $< 98\%$, sex mismatch, and excessive heterozygosity (FHET [F coefficient estimate for assessing

RESEARCH IN CONTEXT

- 1. Systematic review:** The authors used PubMed to identify previous studies examining polygenic risk scores (PRSs) in relation to Alzheimer's disease (AD) and dementia. However, population-based studies examining the effect of AD-PRSs and *APOE* genotype on incident dementia in samples of very old individuals are lacking.
- 2. Interpretation:** In a population-based sample of 2052 individuals aged 70 to 111 years, we found that AD-PRSs (including 39 or 57 genetic variants) were associated with incident dementia, particularly in *APOE* $\epsilon 4$ non-carriers and in those aged 95 years or older. *APOE* $\epsilon 4$ carriership was associated with increased, and $\epsilon 2$ carriership with reduced risk of dementia. Among those aged 95 years or older, *APOE* $\epsilon 4$ predicted dementia only in the low-risk tertile of the AD-PRSs.
- 3. Future directions:** Results from this type of study could provide additional information to identify individuals at risk of dementia for implementation of potential preventative strategies before dementia pathology starts to accumulate.

heterozygosity] outside ± 0.2). Samples were defined as non-European ancestral outliers, and removed, if their first two principal components (PCs) exceeded six standard deviations from the mean values of the European samples in the 1000 Genomes Project global reference population. Closely related samples were removed based on pairwise PI_HAT (i.e., proportion of genome that are in identity-by-descent; calculated using `- genome` option in PLINK) ≥ 0.2 (first- and second-degree relatives). Further, markers were excluded due to per-SNP call rate $< 98\%$, minor allele frequency (MAF) < 0.01 , and Hardy-Weinberg disequilibrium ($P < 1 \times 10^{-6}$). The Sanger imputation service was used to impute post-QC, using the reference panel of Haplotype Reference Consortium data (HRC1.1). Post-imputation QC included removal of SNPs with low imputation quality (RSQ [imputation quality] ≤ 0.3). The mean RSQ for the SNPs included in the AD-PRSs was 0.83 (SD 0.13).

The variants rs7412 and rs429358 (which define the $\epsilon 2$, $\epsilon 3$, and $\epsilon 4$ alleles) in the *APOE* gene were also genotyped with the KASPar PCR SNP genotyping system (LGC Genomics, Hoddesdon, Herts, UK) or by mini-sequencing, as previously described in detail.²⁵

2.4 | Polygenic risk scores

AD-PRSs were generated using summary statistics from stage 1 of the most recent AD GWAS including clinically defined AD.² SNPs were selected using linkage disequilibrium (LD) clumping. In short, the European ancestry samples from the 1000 Genomes Project were

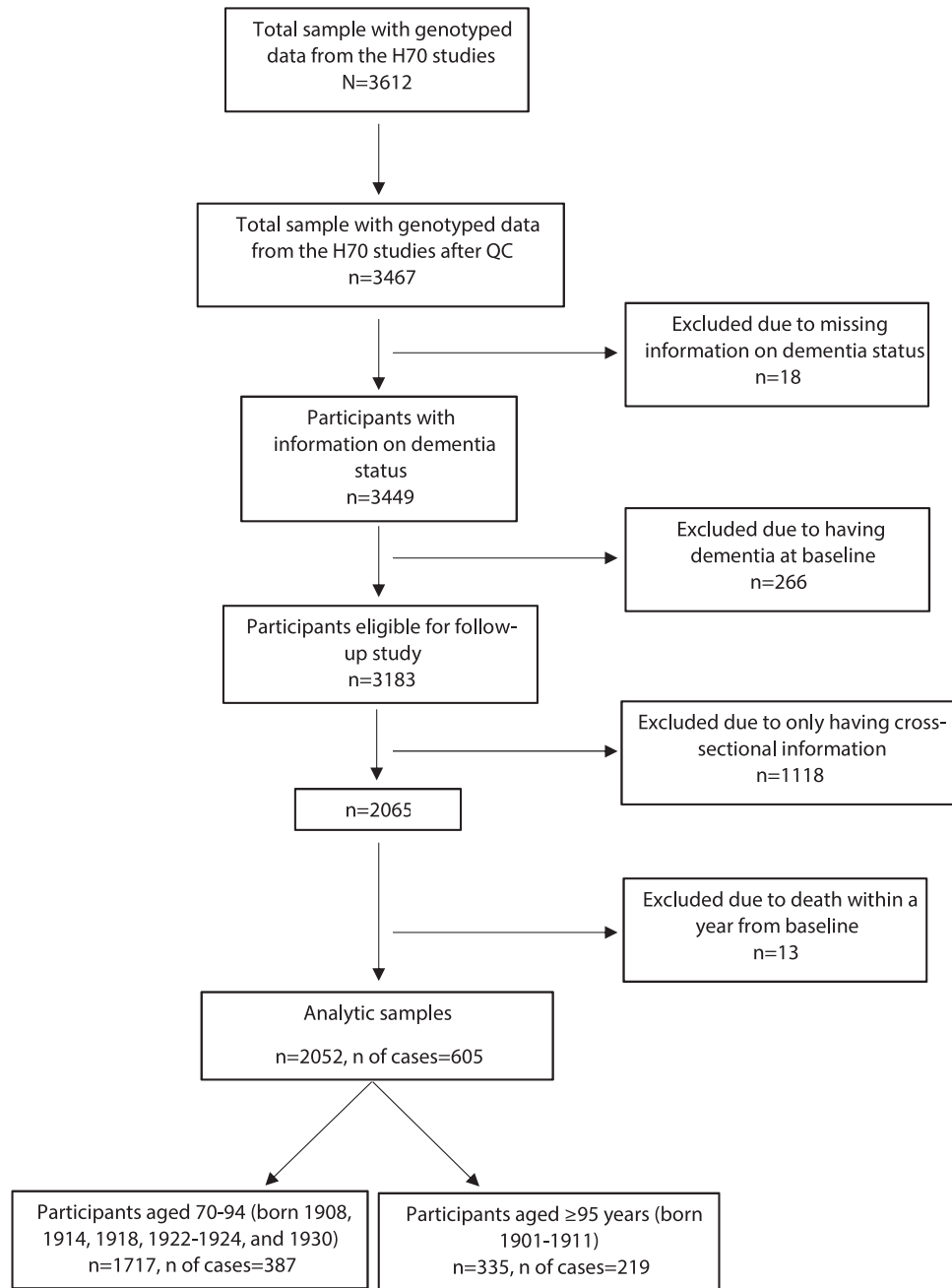


FIGURE 1 Flowchart of the participants included from the Gothenburg H70 Birth Cohort Study in the analytic samples of the present study (total analytic sample, and age subgroups)

used as a reference panel to remove variants in LD, all variants 250 kb upstream and downstream of top signal were removed ($R^2 < 0.001$). All variants in the APOE region (chromosome 19, coordinates hg19 [GRCh37]: 44412079 to 46412079) were removed. In the present study, we created PRSs including variants that surpassed four P value thresholds ($P < 1e^{-5}$, $P < 1e^{-3}$, $P < 1e^{-1}$), referred to as $1e^{-5}$ AD-PRS (including 57 SNPs, Table S1 in supporting information), $1e^{-3}$ AD-PRS (including 1333 SNPs), and $1e^{-1}$ AD-PRS (including 13,942 SNPs). For the $P < 5e^{-8}$ level we used an AD-PRS based on 39 SNPs (39-SNPs AD-PRS, Table S1) that have shown genome-wide significant association with AD after combined meta-analyses in the most recent GWAS

by de Rojas et al.³ In the same study, the 39-SNPs AD-PRS was also validated for the first time in a clinical sample.³ All AD-PRSs were calculated as the sum of the β -coefficient multiplied with the number (or dosage) of effect alleles of each SNP.

The population was further divided into low-, middle-, and high-risk tertiles of AD-PRSs. To avoid boundaries being affected by survival to old age, limits of the tertiles were calculated using data from 1130 participants born 1944 (mean age at blood sampling 70.6 years, SD 0.3 years). The AD-PRSs were standardized and used as continuous variables in all analyses, while tertiles of AD-PRSs were used to stratify the data.

2.5 | APOE genotype

APOE genotype was divided into $\epsilon 4$ carriers ($\epsilon 4/\epsilon 2$, $\epsilon 4/\epsilon 3$, or $\epsilon 4/\epsilon 4$) and $\epsilon 4$ non-carriers ($\epsilon 2/\epsilon 2$, $\epsilon 3/\epsilon 3$, or $\epsilon 3/\epsilon 2$), as well as into $\epsilon 2$ carriers ($\epsilon 2/\epsilon 2$, $\epsilon 2/\epsilon 3$, $\epsilon 2/\epsilon 4$) and $\epsilon 2$ non-carriers ($\epsilon 3/\epsilon 3$, $\epsilon 3/\epsilon 4$, $\epsilon 4/\epsilon 4$).

In sensitivity analyses, we excluded $\epsilon 4/\epsilon 2$ heterozygotes. Thus, APOE genotype was divided into $\epsilon 4$ carriers comprising $\epsilon 4/\epsilon 3$ heterozygotes and $\epsilon 4/\epsilon 4$ homozygotes, and $\epsilon 2$ carriers comprising $\epsilon 3/\epsilon 2$ heterozygotes and $\epsilon 2/\epsilon 2$ homozygotes.

2.6 | Neuropsychiatric examination

Neuropsychiatric examinations were performed by experienced psychiatric nurses in 2000–2016. The examinations were semi-structured and included comprehensive neuropsychiatric examinations and an extensive battery of neuropsychological tests.²⁶ Close informant interviews were performed by psychiatric nurses or psychologists. The interviews were semi-structured and comprised questions about changes in behavior and intellectual function; psychiatric symptoms; activities of daily living; and in cases of dementia, age of onset and disease course.²⁷

2.7 | Diagnosis of dementia

The diagnosis of dementia at each examination was based on Diagnostic and Statistical Manual of Mental Disorders Third Edition-Revised (DSM-III-R) criteria,²⁸ using information from neuropsychiatric examinations and close informant interviews.^{26,27} Dementia diagnoses for individuals lost to follow-up were based on information obtained from the Swedish Inpatient Registry until 2012.²⁶ In the present study, 441 (72.9%) of 605 dementia diagnoses were based on neuropsychiatric examinations.

Age of dementia onset was based on information provided by close informants, the examinations, and the Swedish Inpatient Register. If no information could be obtained from these sources, the age of onset was determined as the mid-point between the last examination at which dementia criteria were not fulfilled and the first with a dementia diagnosis. Information on deaths during follow-up was obtained from the Swedish Population Registry until December 31, 2016.

2.8 | Statistical analysis

All analyses were done in R (version 4.0.0) using the survival and survminer packages. Sample characteristics are presented as numbers, mean and median values, SD, minimum (min) and maximum (max) values, and percentages. Information on years of education and Mini-Mental State Examination (MMSE) score was obtained through semi-structured interviews at age of blood sampling.

Cox regression models using age as time scale were used to analyze the effect of the AD-PRSs and APOE genotype on incident dementia,

presented as HR and 95% CI in a model including the following covariates: age at blood sampling, birth year, sex, and 10 PCs to correct for population stratification. Participants were censored at the date of (1) dementia diagnosis, (2) death, or (3) end of follow-up (December 31, 2016 for those with last examination year in 2015–2016, and December 31, 2012 for those with last examination year in 2009–2010, and register data until 2012). The proportional hazard assumption was verified using Schoenfeld residuals.

We examined the interaction of APOE genotype (based on $\epsilon 4$ or $\epsilon 2$ carriership in separate models) and AD-PRSs in relation to incident dementia. Further, based on the results of the interaction analyses, we examined the effect of the AD-PRSs stratified by APOE $\epsilon 4$ carriership, and the effect of APOE $\epsilon 4$ carriership stratified by tertiles of 39-SNPs AD-PRS and $1e^{-5}$ AD-PRS, respectively. The analyses were carried out in the total sample, and in those aged 70–94 years and ≥ 95 years.

In a subsample of individuals with genotyped data and information on MMSE and years of education ($n = 1394$), we repeated the analyses of APOE genotype and the 39-SNPs AD-PRS, and $1e^{-5}$ AD-PRS in relation to incident dementia using Cox regression models adjusted for age at blood sampling, birth year, sex, 10 PCs, MMSE score, and years of education.

Furthermore, we examined the effect of the 39-SNPs AD-PRS, the $1e^{-5}$ AD-PRS, and APOE genotype on mortality in a Cox regression model adjusted for age at blood sampling, birth year, sex, and 10 PCs. We also examined the interaction between APOE $\epsilon 4$ status and the two AD-PRSs in relation to mortality.

Finally, we examined the individual effect of the different SNPs included in the 39-SNPs AD-PRS and $1e^{-5}$ AD-PRS on incident dementia in Cox regression models using age as time scale, adjusted for age at blood sampling, birth year, sex, and 10 PCs. Further, to examine whether any of those SNPs drove the associations with the AD-PRSs, analyses were performed with the exclusion of the SNPs associated with incident dementia, one by one.

3 | RESULTS

Sample characteristics by APOE genotype and tertiles of the 39-SNPs AD-PRS and the $1e^{-5}$ AD-PRS are shown in Table 1. During a mean follow-up of 7.2 years (SD 4.7 years; 14,775 person-years), 605 participants developed dementia, with mean age of dementia onset 89.4 years (SD 8.2 years). In total, 1243 participants were censored due to death (72.5% women) with a median age at death of 90 years (range, 71–111 years). Compared to those excluded ($n = 1131$, Figure 1), participants who were followed up ($n = 2052$) had a higher mean age at baseline ($P < .001$), were more likely women ($P < .001$), and had a lower frequency of APOE $\epsilon 4$ carriers ($P < .001$), while no differences were found in AD-PRSs (the 39-SNPs AD-PRS and $1e^{-5}$ AD-PRS) or median age at death. Compared to those with prevalent dementia ($n = 266$, Figure 1), individuals with incident dementia ($n = 605$) had a higher age at death ($P < .001$) and a lower frequency of APOE $\epsilon 4$ carriers ($P = .049$), while no differences were found in sex, the AD-PRSs (the 39-SNPs AD-PRS and $1e^{-5}$ AD-PRS), or age at baseline.

TABLE 1 Sample characteristics by APOE ε4 allele and tertile of AD-PRSs

Characteristics	Total sample (n = 2052)	APOE genotype		39-SNPs AD-PRS tertile			1e ⁻⁵ tertile AD-PRS		
		APOE ε4 carriers (n = 505)	APOE ε4 non-carriers (n = 1547)	Low-risk (n = 652)	Middle-risk (n = 653)	High-risk (n = 747)	Low-risk (n = 723)	Middle-risk (n = 638)	High-risk (n = 691)
Age at blood sampling (years), mean (SD)	80 (9.5)	78.7 (8.8)	80.6 (9.7)	80.3 (9.9)	80.6 (9.4)	79.5 (9.2)	80.5 (9.8)	79.7 (9.3)	80.1 (9.3)
Education (years), mean (SD) ^a	9.7 (5.4)	10.1 (6.2)	9.5 (5.1)	10.0 (5.0)	9.6 (6.1)	9.5 (5.2)	9.9 (5.2)	9.8 (6.1)	9.3 (4.9)
APOE ε4 carrier ship, % (cases/total)	24.6 (505/2052)	NA	NA	48.9 (319/652)	18.5 (121/653)	8.7 (65/747)	25.4 (184/723)	22.4 (143/638)	25.8 (178/691)
APOE ε2 carrier ship, % (cases/total)	14.8 (303/2052)	7.3 (37/505)	17.2 (266/1547)	12.1 (79/652)	14.4 (94/653)	17.4 (130/747)	14.0 (101/753)	16.5 (105/638)	14.0 (97/691)
39-SNPs AD-PRS, median (min, max)	0.1 (-3.5, 4.1)	-0.8 (-3.5, 1.6)	0.3 (-3.1, 4.1)	-1.0 (-3.5, -0.5)	0.003 (-0.5, 0.4)	0.9 (0.4, 4.1)	-0.5 (-3.5, 2.3)	0.1 (-2.9, 3.1)	0.6 (-1.9, 4.1)
1e ⁻⁵ AD-PRS, median (min, max)	-0.1 (-3.6, 3.7)	-0.1 (-2.9, 3.7)	-0.1 (-3.6, 3.4)	-0.6 (-3.6, 3.3)	-0.1 (-2.5, 3.7)	0.5 (-2.8, 3.4)	-1.0 (-3.6, -0.4)	-0.1 (-0.4, 0.4)	0.9 (0.4, 3.7)
Sex female, % (cases/total)	70.3 (1442/2052)	70.5 (356/505)	70.2 (1086/1547)	70.2 (458/652)	73.0 (477/653)	67.9 (507/747)	70.7 (511/723)	69.4 (443/638)	70.5 (487/691)
Dementia diagnosis, % (cases/total)	29.5 (605/2052)	36.0 (182/505)	27.3 (423/1547)	31.0 (202/652)	27.7 (181/653)	29.7 (222/747)	28.8 (208/723)	28.2 (180/638)	31.4 (217/691)
Age at dementia onset (years), mean (SD)	89.4 (8.2)	87.3 (7.8)	90.3 (8.2)	89.7 (8.3)	89.4 (7.8)	89.1 (8.4)	90.2 (8.0)	88.6 (8.5)	89.2 (8.1)
MMSE score at baseline, median (min, max) ^b	28 (0, 30)	28 (2, 30)	28 (0, 30)	28 (2, 30)	28 (0, 30)	28 (0, 30)	28 (0, 30)	28 (0, 30)	28 (0, 30)
Mortality during follow-up, % (cases/total)	60.6 (1243/2052)	61.4 (310/505)	60.3 (933/1547)	63.0 (411/652)	60.3 (394/653)	58.6 (438/747)	63.9 (462/723)	56.3 (359/638)	61.1 (422/691)
Age at death (years), median (min, max)	90.0 (71, 111)	89.0 (72, 106)	91.0 (71, 111)	90.0 (72, 111)	90.0 (71, 107)	90.0 (72, 107)	91 (72, 111)	90 (73, 107)	90 (71, 106)

^an = 1471, information on years of education was obtained through semi-structured interviews at age of blood sampling.

^bn = 1669, MMSE score was obtained through neuropsychiatric examinations at age of blood sampling.

Abbreviations: AD, Alzheimer's disease; APOE, apolipoprotein E; MMSE, Mini-Mental State Examination; PRS, polygenic risk score; SD, standard deviation; SNP, single nucleotide polymorphism.

TABLE 2 Associations between AD-PRSs (the 39-SNPs AD-PRS and the $1e^{-5}$ AD-PRS) and incident dementia, stratified by age groups and APOE $\epsilon 4$ carriership

	Total sample (n = 2052)			
	HR ^a	CI	P value	Number of events
39-SNPs AD-PRS	1.03	0.95-1.11	.5	605
39-SNPs AD-PRS in APOE $\epsilon 4$ non-carriers	1.22	1.10-1.35	2×10^{-4}	423
39-SNPs AD-PRS in APOE $\epsilon 4$ carriers	0.94	0.79-1.12	.5	182
70-94 years (n = 1717)				
39-SNPs AD-PRS	0.99	0.89-1.09	.8	386
39-SNPs AD-PRS in APOE $\epsilon 4$ non-carriers	1.16	1.01-1.34	.03	247
39-SNPs AD-PRS in APOE $\epsilon 4$ carriers	1.08	0.88-1.33	.5	139
95+ years (n = 335)				
39-SNPs AD-PRS	1.12	0.98-1.29	.1	219
39-SNPs AD-PRS in APOE $\epsilon 4$ non-carriers	1.28	1.10-1.50	2×10^{-3}	176
39-SNPs AD-PRS in APOE $\epsilon 4$ carriers	0.62	0.41-0.95	.03	43
1e⁻⁵ AD-PRS				
1e ⁻⁵ AD-PRS	1.09	1.01-1.19	.03	605
1e ⁻⁵ AD-PRS in APOE $\epsilon 4$ non-carriers	1.15	1.05-1.27	4×10^{-3}	423
1e ⁻⁵ AD-PRS in APOE $\epsilon 4$ carriers	0.94	0.81-1.09	.4	182
70-94 years (n = 1717)				
1e ⁻⁵ AD-PRS	1.07	0.96-1.19	.2	386
1e ⁻⁵ AD-PRS in APOE $\epsilon 4$ non-carriers	1.18	0.98-1.27	.1	247
1e ⁻⁵ AD-PRS in APOE $\epsilon 4$ carriers	0.99	0.83-1.17	.9	139
95+ years (n = 335)				
1e ⁻⁵ AD-PRS	1.15	1.01-1.32	.04	219
1e ⁻⁵ AD-PRS in APOE $\epsilon 4$ non-carriers	1.12	0.98-1.27	.1	176
1e ⁻⁵ AD-PRS in APOE $\epsilon 4$ carriers	0.75	0.52-1.08	.1	43

Notes: Stage 1 of the most recent AD GWAS (Kunkle et al.²) was used to generate the AD-PRSs.

^aHR per standard deviation (SD) of the score.

Abbreviations: AD, Alzheimer's disease; APOE, apolipoprotein E; GWAS, genome-wide association study; HR, hazard ratio; PRS, polygenic risk score; SNP, single nucleotide polymorphism.

In all individuals with follow-up data (n = 2052), APOE $\epsilon 4$ carriership (see Table 3; HR 1.60; 95% CI 1.35-1.92, $P = 1 \times 10^{-7}$) and the $1e^{-5}$ AD-PRS (see Table 2; HR 1.09; 95% CI 1.01-1.19, $P = .03$) were associated with increased risk of dementia, while $\epsilon 2$ carriership was associated with reduced risk (HR 0.74; 95% CI 0.59-0.95, $P = .02$). No association was found between the 39-SNPs AD-PRS (see Table 2; HR 1.03; 95% CI 0.95-1.11, $P = .5$), $1e^{-3}$ AD-PRS (HR 1.05; 95% CI 0.97-1.14, $P = .2$), and $1e^{-1}$ AD-PRS (HR 0.99; 95% CI 0.91-1.08, $P = .8$) and incident dementia. However, there was an interaction between APOE $\epsilon 4$ carriership and the 39-SNPs AD-PRS ($P = .02$), and between APOE $\epsilon 4$ status and the $1e^{-5}$ AD-PRS ($P = .05$) in relation to incident dementia. No interaction was observed between APOE $\epsilon 4$ carriership and the $1e^{-3}$ AD-PRS ($P = .6$) or the $1e^{-1}$ AD-PRS ($P = .4$) in relation to incident dementia. Stratified analysis showed that the 39-SNPs AD-PRS and the $1e^{-5}$ AD-PRS were associated with dementia among APOE $\epsilon 4$ non-carriers (39-SNPs AD-PRS: HR 1.22; 95% CI 1.10-1.35, $P = 2 \times 10^{-4}$, $1e^{-5}$ AD-PRS: HR 1.15, 95% CI 1.05-1.27, $P = 4 \times 10^{-3}$), while no association was found among $\epsilon 4$

carriers (Table 2, Figure 2). After stratifying by the AD-PRSs tertiles, APOE $\epsilon 4$ carriership was only associated with incident dementia among those in the low- and middle-risk tertiles (Table 3, Figure 3). No interaction was found between APOE $\epsilon 2$ carriership and the 39-SNPs AD-PRS ($P = .6$) or the $1e^{-5}$ AD-PRS ($P = .3$). In sensitivity analyses, APOE $\epsilon 4$ (HR 1.68; 95% CI 1.41-2.02, $P = 1 \times 10^{-8}$) and $\epsilon 2$ carriership (HR 0.76; 95% CI 0.59-0.97, $P = .03$) remained associated with incident dementia, after excluding APOE $\epsilon 4/\epsilon 2$ heterozygotes (n = 2015).

In a subsample of individuals with genotyped data and information on years of education and MMSE score (n = 1394), the main results described above did not change after including these variables as covariates (data not shown).

Among those aged 70 to 94 years, the 39-SNPs AD-PRS was associated with incident dementia in APOE $\epsilon 4$ non-carriers (HR 1.16; 95% CI 1.01-1.34, $P = .03$; Table 2), but not in $\epsilon 4$ carriers (HR 1.08; 95% CI 0.88-1.33, $P = .5$; Table 2). The $1e^{-5}$ AD-PRS was not associated with incident dementia in this age group (HR 1.07; 95% CI 0.96-1.19,

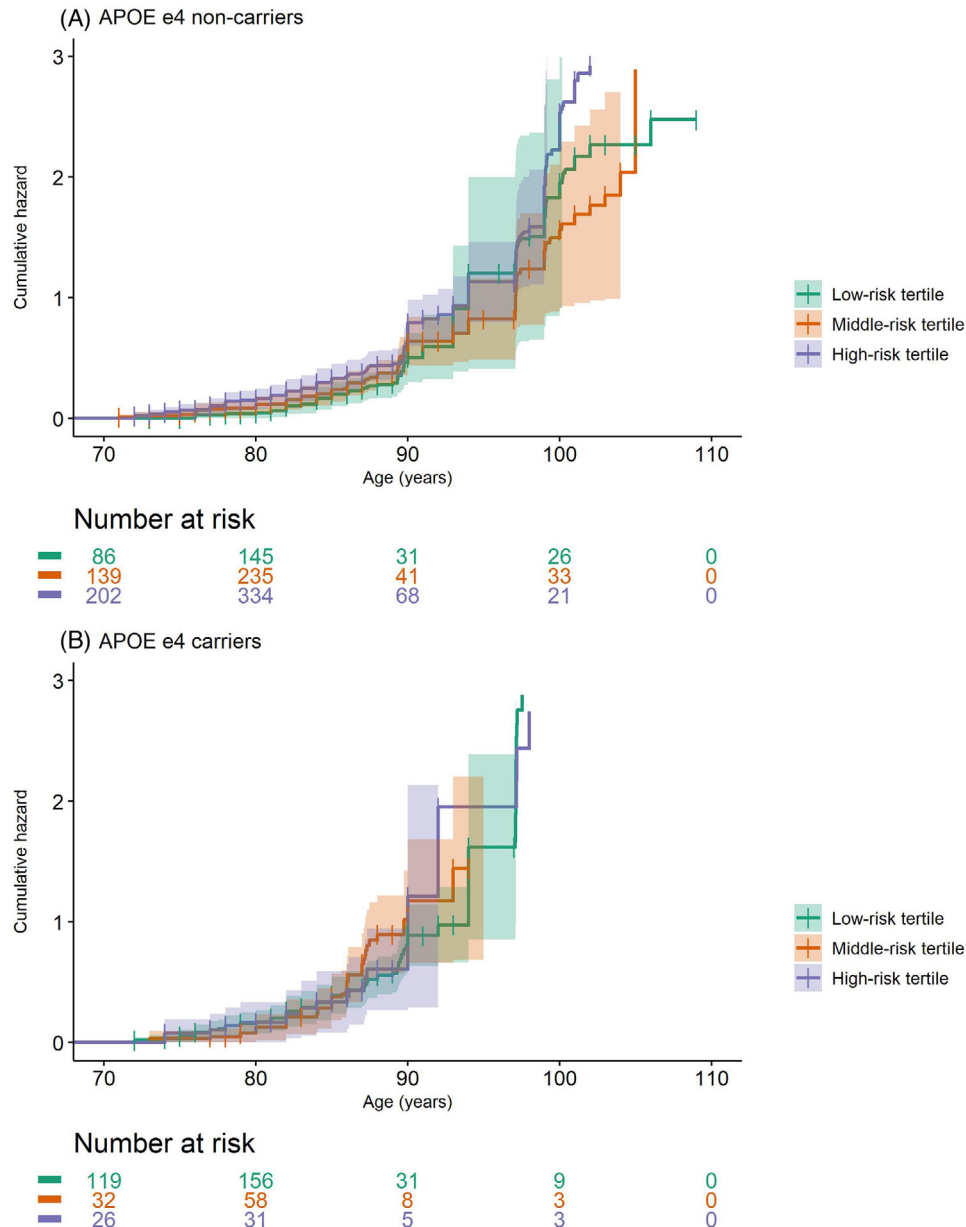


FIGURE 2 Cumulative hazard of dementia by tertile of the 39-single nucleotide polymorphisms (SNPs) Alzheimer's disease (AD)-polygenic risk scores (PRS; low-risk tertile, middle-risk tertile, and high-risk-tertile) stratified by apolipoprotein E (APOE) ϵ 4 carriership (A, APOE ϵ 4 non-carriers, and B, APOE ϵ 4 carriers). Analysis adjusted for covariates (age at blood sampling, birth year, sex, and 10 principal components to correct for population stratification) set to sample average

$P = .2$; Table 2). APOE ϵ 4 carriership predicted dementia in the low- and middle-risk tertiles of the 39-SNPs AD-PRS, and in all tertiles of the $1e^{-5}$ AD-PRS (Table 3). Moreover, APOE ϵ 2 carriership was associated with reduced risk of dementia (HR 0.69; 95% CI 0.51–0.95, $P = .02$).

In those aged ≥ 95 years, $1e^{-5}$ AD-PRS was associated with incident dementia (HR 1.15, 95% CI 1.01–1.32, $P = .04$), while the 39-SNPs AD-PRS was associated with incident dementia among APOE ϵ 4 non-carriers only (HR 1.28; 95% CI 1.10–1.50, $P = 2 \times 10^{-3}$; Table 2). In APOE ϵ 4 carriers the 39-SNPs AD-PRS was instead related to a reduced risk of dementia (HR 0.62; 95% CI 0.41–0.95, $P = .03$; Table 2). APOE ϵ 4 carriership only predicted dementia in the low-risk tertile of

the AD-PRSs (39-SNPs AD-PRS: HR 1.72; 95% CI 1.01–2.92, $P = .05$, $1e^{-5}$ AD-PRS: HR 3.66; 95% CI 1.99–6.73, $P = 3 \times 10^{-5}$; Table 3). No association was found between APOE ϵ 2 carriership and dementia (HR 0.80; 95% CI 0.55–1.17, $P = .3$) in this age group.

Furthermore, APOE ϵ 4 carriership was associated with increased risk of mortality (HR 1.21; 95% CI 1.07–1.39, $P = 3 \times 10^{-3}$), while ϵ 2 carriership (HR 1.01; 95% CI 0.87–1.18, $P = .8$), the 39-SNPs AD-PRS (HR 1.0; 95% CI 0.87–1.15, $P > .9$), and the $1e^{-5}$ AD-PRS (HR 1.03; 95% CI 0.97–1.09, $P = .4$) were not. There was no interaction between APOE ϵ 4 allele and the 39-SNPs AD-PRS ($P = .1$) or the $1e^{-5}$ AD-PRS ($P > .9$) in relation to risk of mortality.

TABLE 3 Associations between APOE ϵ 4 allele and incident dementia, stratified by age groups and tertiles of AD-PRSs

	Total sample (n = 2052)			
	HR	CI	P value	Number of events
APOE ϵ 4	1.60	1.35–1.92	1×10^{-7}	605
APOE ϵ 4 in low-risk 39-SNPs AD-PRS	1.98	1.47–2.66	7×10^{-6}	202
APOE ϵ 4 in middle-risk 39-SNPs AD-PRS	2.00	1.43–2.81	6×10^{-5}	181
APOE ϵ 4 in high-risk 39-SNPs AD-PRS	1.18	0.75–1.84	.48	222
70–94 years (n = 1717)				
APOE ϵ 4	1.75	1.42–2.16	2×10^{-7}	386
APOE ϵ 4 in low-risk 39-SNPs AD-PRS	2.01	1.37–2.95	4×10^{-4}	124
APOE ϵ 4 in middle-risk 39-SNPs AD-PRS	2.39	1.61–3.55	2×10^{-5}	117
APOE ϵ 4 in high-risk 39-SNPs AD-PRS	1.65	0.99–2.77	.06	145
APOE ϵ 4 in low-risk $1e^{-5}$ AD-PRS	2.13	1.48–3.08	6×10^{-5}	125
APOE ϵ 4 in middle-risk $1e^{-5}$ AD-PRS	1.87	1.26–2.77	2×10^{-3}	119
APOE ϵ 4 in high-risk $1e^{-5}$ AD-PRS	1.44	1.01–2.06	.04	142
95+ years (n = 335)				
APOE ϵ 4	1.33	0.94–1.88	.11	219
APOE ϵ 4 in low-risk 39-SNPs AD-PRS	1.72	1.01–2.92	.05	78
APOE ϵ 4 in middle-risk 39-SNPs AD-PRS	1.27	0.55–2.95	.58	64
APOE ϵ 4 in high-risk 39-SNPs AD-PRS	0.79	0.30–2.09	.63	77
APOE ϵ 4 in low-risk $1e^{-5}$ AD-PRS	3.66	1.99–6.73	3×10^{-5}	83
APOE ϵ 4 in middle-risk $1e^{-5}$ AD-PRS	0.71	0.35–1.43	.3	61
APOE ϵ 4 in high-risk $1e^{-5}$ AD-PRS	1.06	0.55–2.02	.9	75

Note: Stage 1 of the most recent AD GWAS (Kunkle et al.²) was used to generate the AD-PRSs.

Abbreviations: AD, Alzheimer's disease; APOE, apolipoprotein E; CI, confidence interval; HR, hazard ratio; PRS, polygenic risk score; SNP, single nucleotide polymorphism.

The SNPs rs876461 (*PRKD3*; $P = .02$), rs117618017 (*APH1B*; $P = .03$), rs4844610 (*CR1*; $P = .04$), rs7584040 (*BIN1*; $P = 2 \times 10^{-3}$), rs11168036 (*HBEGF*; $P = 8 \times 10^{-3}$), rs143429938 (*CLU/MIR6843*; $P = .04$), and rs8064326 (*KCTD2*; $P = 3 \times 10^{-4}$) were independently associated with incident dementia (Table S1). Among APOE ϵ 4 non-carriers, the 39-SNPs AD-PRS remained associated with incident dementia after removal of rs876461, rs117618017, and rs4844610 (for all analyses: $P = 2 \times 10^{-4}$). The $1e^{-5}$ AD-PRS remained associated with incident dementia among APOE ϵ 4 non-carriers after removal of rs7584040 ($P = .01$), rs11168036 ($P = 9 \times 10^{-3}$), rs143429938 ($P = 6 \times 10^{-3}$), and rs8064326 ($P = .01$). However, the association between the $1e^{-5}$ AD-PRS and incident dementia in the total sample (not stratified by APOE ϵ 4 status) was slightly attenuated after removal of the SNPs (for all analyses: $P = .06$). Overall, our analyses indicated that the associations seen with the AD-PRSs were not mainly driven by one, or a few, SNPs.

4 | DISCUSSION

In a population-based sample of individuals aged 70 to 111 years, AD-PRSs (including 39 or 57 SNPs) were associated with incident dementia, particularly in APOE ϵ 4 non-carriers and in those aged 95 years or older. However, no association was found between the wider AD-PRSs (including >1000 SNPs, P values $\geq 1e^{-3}$) and incident dementia. APOE ϵ 4 carriership was associated with increased risk of dementia, especially in the low- and middle-risk tertiles of the AD-PRSs, while ϵ 2 carriership was associated with reduced risk. Among those aged 95 years or older, APOE ϵ 4 carriership only predicted dementia in the low-risk tertile of the AD-PRSs. To our knowledge, this is the first study reporting an effect of AD-related genetic variants beyond that of APOE genotype on dementia risk in the oldest old.

Previous studies have reported an association between AD-PRS and dementia in clinical^{3,5,7,9} and population-based samples.^{10,13}

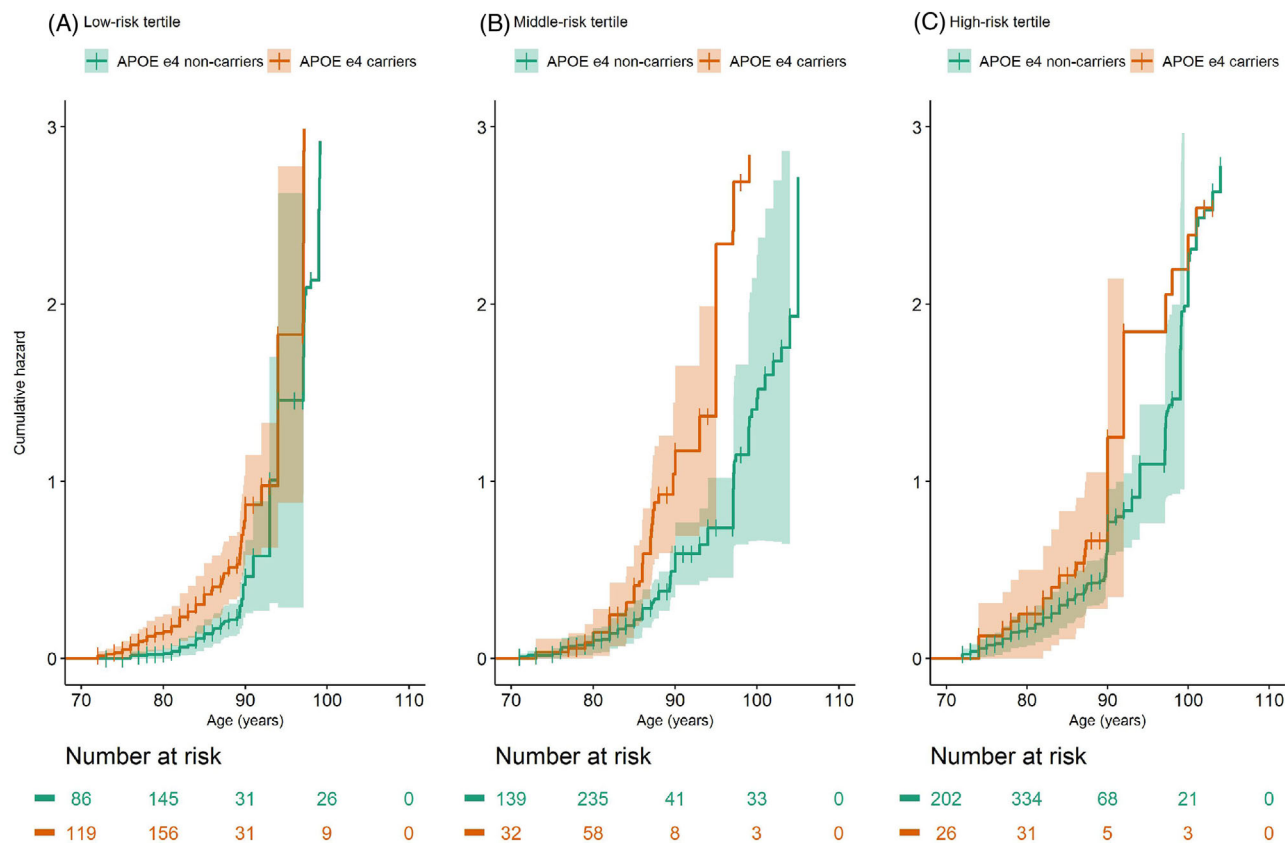


FIGURE 3 Cumulative hazard of dementia by APOE $\epsilon 4$ carriership (APOE $\epsilon 4$ carriers and non-carriers), stratified by tertile of the 39-single nucleotide polymorphisms (SNPs) Alzheimer's disease (AD)-polygenic risk scores (PRS; A, low-risk tertile, B, middle-risk tertile, and C, high-risk tertile). Analysis adjusted for covariates (age at blood sampling, birth year, sex, and 10 principal components to correct for population stratification) set to sample average

However, the modifying effect of APOE $\epsilon 4$ status on the association between AD-PRS and dementia varies; clinical samples report a similar effect of AD-PRS on AD in APOE $\epsilon 4$ carriers and non-carriers,^{3,5,7} while the population-based Rotterdam Study reported a higher effect of an AD-PRS on AD and dementia among APOE $\epsilon 4$ carriers compared to non-carriers.¹⁰ We found an association between AD-PRSs (including 39 and 57 SNPs) and dementia among APOE $\epsilon 4$ non-carriers. One reason for the discrepancy could be that our study had a rather high mean age at baseline (80 years), whereas the Rotterdam Study had a considerably lower age at inclusion (mean 67.5 years).¹⁰ APOE $\epsilon 4$ carriership is related to earlier age of dementia onset²⁹ as well as premature death.³⁰ In the current study, the inclusion of older participants renders a selection of healthier APOE $\epsilon 4$ carriers who may carry additional genetic variants preventing them from developing dementia at the ages observed. Further, our AD-PRSs included 39 SNPs and 57 SNPs, while the population-based Rotterdam Study, reporting a higher effect among APOE $\epsilon 4$ carriers, used an AD-PRS including 23 SNPs.¹⁰ However, analysis using this 23 SNPs AD-PRS in our sample showed similar results as for the 39 SNPs AD-PRS (data not shown).

We found no effect of the wider AD-PRSs (including more than 1000 SNPs, P values $\geq 1e^{-3}$) on incident dementia. In contrast, Escott-Price et al. reported that AD-PRSs including genetic variants at P value ≤ 0.5 had the highest prediction of AD.⁹ Discrep-

ancies could be due to differences in study setting and design, such as diagnostic status (i.e., dementia in our study and AD in the study by Escott-Price et al.) and age at inclusion. Further, discrepancies could also arise due to differences in the construction of the PRSs (e.g., we used a rather strict R^2 threshold [$R^2 = 0.001$] for clumping, while Escott-Price et al. chose a more liberal level [$R^2 = 0.2$]).⁹

We did not find an effect of APOE $\epsilon 4$ carriership on dementia risk in participants aged 95 years or older. However, we found that the APOE $\epsilon 4$ allele predicted dementia in the low-risk AD-PRSs tertile. This finding indicates, once again, that very old dementia-free survivors, carrying genetic high-risk variants (i.e., both APOE $\epsilon 4$ and a high or medium risk based on the AD-PRSs), probably carry undiscovered protective genetic variants. In line with this, we found that the AD-PRS was associated with reduced risk of dementia in APOE $\epsilon 4$ carriers, while it was associated with increased risk of dementia in APOE $\epsilon 4$ non-carriers. Consistent with other studies,^{14,31,32} we found no effect of APOE $\epsilon 2$ carriership on dementia risk in those aged 95 years or older.

Strengths of this study include the population-based sample and a large subsample of participants aged 95 years and above. In addition, psychiatric nurses performed the neuropsychiatric examinations and multiple sources of information were used to detect and diagnose dementia according to established diagnostic criteria throughout

the study. There are also some possible limitations. First, we cannot exclude that our results could have been affected by selection bias. Although the larger proportion of individuals aged 95 years or older can be considered a strength, our results should be interpreted with regard to the selection of healthier individuals at these higher ages. Second, there might be unidentified dementia cases in the control group. However, our frequent follow-ups with neuropsychiatric examinations, standardized diagnostic procedures, and use of registers to detect dementia reduces this possibility. Third, cumulative attrition is a problem in long-term prospective studies. Although this issue was partially alleviated by using the Swedish Inpatient Registry to detect dementia in those lost to follow-up, these sources underestimate the number of dementia cases.³³ However, it should be noted that almost all people in Sweden receive hospital treatment within the public health-care system and that the Swedish Inpatient Registry covers the entire country. If anything, underestimation of dementia cases would reduce the possibility of finding true associations. Fourth, the AD-PRSs comprise SNPs associated with AD. We examined the effect of the AD-PRSs on incident dementia, which could include dementia subtypes other than AD, not as strongly linked to the SNPs included in the AD-PRSs. This would most likely attenuate the associations. It is noteworthy that in Swedish populations, approximately two thirds of those with dementia have AD.^{34,35} Fifth, *APOE* ϵ 4 allele was associated with mortality and competing risk of death is likely to have affected the results. Sixth, all members of the sample are White and living in Sweden, thereby limiting the possibility to generalize to other populations.

In conclusion, we found an effect of AD-PRSs (including 39 SNPs or 57 SNPs) and *APOE* genotype on dementia risk in the general population up to very old ages, especially among *APOE* ϵ 4 non-carriers. Results from this type of study could provide additional information to identify individuals at increased risk of dementia for implementation of potential preventative strategies before dementia pathology starts to accumulate.

ACKNOWLEDGMENTS

The authors thank the participants in the Prospective Population Study of Women, and the Gothenburg H70 Birth Cohort Study. The authors also thank the members of the study group for their cooperation in data collection and management; UCL Genomics, London, UK, for performing the genotyping; and the Genomic Aggregation Project in Sweden (GAPS), the Karolinska Institute, Stockholm, for help and advice with the QC and imputation. Further, we thank the International Genomics of Alzheimer's Project (IGAP) for providing summary results data for these analyses. The investigators within IGAP contributed to the design and implementation of IGAP and/or provided data but did not participate in analysis or writing of this report. IGAP was made possible by the generous participation of the control subjects, the patients, and their families. The i-Select chips was funded by the French National Foundation on Alzheimer's disease and related disorders. EADI was supported by the LABEX (laboratory of excellence program investment for the future) DISTALZ grant, Inserm, Institut Pasteur de Lille, Université de Lille 2 and the Lille University Hospital. GERAD/PERADES was supported by the Medical Research Coun-

cil (Grant no 503480), Alzheimer's Research UK (Grant no 503176), the Wellcome Trust (Grant n° 082604/2/07/Z) and German Federal Ministry of Education and Research (BMBF): Competence Network Dementia (CND) grant no 01GI0102, 01GI0711, 01GI0420. CHARGE was partially supported by the NIH/NIA grant R01 AG033193 and the NIA AG081220 and AGES contract N01-AG-12100, the NHLBI grant R01 HL105756, the Icelandic Heart Association, and the Erasmus Medical Center and Erasmus University. ADGC was supported by the NIH/NIA grants: U01 AG032984, U24 AG021886, U01 AG016976, and the Alzheimer's Association grant ADGC-10-196728. The study was financed by grants from the Swedish state under the agreement between the Swedish government and the county councils, the Swedish State Support for Clinical Research (the ALF-agreement; ALF 716681, ALFGBG-81392, ALFGBG-715986, ALFGBG-720931, ALFGBG-81392, ALF GBG-771071), the Swedish Research Council (no 11267, 825-2012-5041, 2013-8717, 2015-02830, 2017-00639, 2017-00915, 2018-02532, 2019-01096, 2019-02075, 2018-02532), [Swedish Research Council for Health, Working Life and Welfare](#) (no 2001-2646, 2001-2835, 2001-2849, 2003-0234, 2004-0150, 2005-0762, 2006-0020, 2008-1229, 2008-1210, 2012-1138, 2004-0145, 2006-0596, 2008-1111, 2010-0870, 2013-1202, 2013-2300, 2013-2496), the Swedish Alzheimer Foundation (AF-742881, AF-930582, AF-646061, AF-741361, AF-842471, AF-737641), Swedish Brain Power, Hjärnfonden, Sweden (FO2016-0214, FO2017-0243, FO2018-0214, FO2019-0163), The Alzheimer's Association Zenith Award (ZEN-01-3151), The Alzheimer's Association Stephanie B. Overstreet Scholars (IIRG-00-2159), The Alzheimer's Association (IIRG-03-6168, IIRG-09-131338), The Bank of Sweden Tercentenary Foundation, Stiftelsen Söderström-Königskasjukhemmet, [Magnus Bergvalls Stiftelse](#), [Stiftelsen för Gamla Tjänarinnor](#), Handlanden Hjalmar Svenssons Forskningsfond, and [Fredrik och Ingrid Thurings Stiftelse](#) (2019-00522). John Hardy is supported by the UK Dementia Research Institute, which receives its funding from DRI Ltd and is funded by the UK Medical Research Council, Alzheimer's Society and Alzheimer's Research UK, and [Medical Research Council](#) (award number MR/N026004/1), Wellcome Trust Hardy (award number 202903/Z/16/Z), Dolby Family Fund, National Institute of Health Research University College London Hospitals Biomedical Research Centre, and supported by the National Institute for Health Research University College London Hospitals Biomedical Research Centre. Henrik Zetterberg is a Wallenberg Scholar and is further supported by grants from the [European Research Council](#) (81712), the Alzheimer Drug Discovery Foundation (ADDF), USA (201809-2016862), and the UK Dementia Research Institute at UCL. Kaj Blennow is further supported by the Alzheimer Drug Discovery Foundation (ADDF), USA (RDAPB-201809-2016615), and European Union Joint Program for Neurodegenerative Disorders (JPND2019-466-236). The funding organizations had no role in design, conduct of the study, or preparation of the manuscript.

CONFLICTS OF INTEREST

Henrik Zetterberg has served at scientific advisory boards for Denali, Roche Diagnostics, Wave, Samumed, Siemens Healthineers, Pinteon

Therapeutics, and CogRx; has given lectures in symposia sponsored by Fujirebio, Alzecure, and Biogen; and is a co-founder of Brain Biomarker Solutions in Gothenburg AB (BBS), which is a part of the GU Ventures Incubator Program (outside submitted work). Kaj Blennow has served as a consultant or on advisory boards for Abcam, Axon, Biogen, Lilly, MagQu, Novartis, and Roche Diagnostics, and is a co-founder of Brain Biomarker Solutions in Gothenburg AB (BBS), which is a part of the GU Ventures Incubator Program (outside submitted work). Jenna Najjar, Sven Van der Lee, Erik Joas, Hanna Wetterberg, John Hardy, Rita Guerreiro, Jose Bras, Margda Waern, Silke Kern, Ingmar Skoog, and Anna Zettergren declare no competing interests.

REFERENCES

- Lambert JC, Ibrahim-Verbaas CA, Harold D, et al. Meta-analysis of 74,046 individuals identifies 11 new susceptibility loci for Alzheimer's disease. *Nat Genet.* 2013;45(12):1452-1458.
- Kunkle BW, Grenier-Boley B, Sims R, et al. Author Correction: genetic meta-analysis of diagnosed Alzheimer's disease identifies new risk loci and implicates A β , tau, immunity and lipid processing. *Nat Genet.* 2019;51(9):1423-1424.
- de Rojas I, Moreno-Grau S, Tesi N, et al. Common variants in Alzheimer's disease: novel association of six genetic variants with AD and risk stratification by polygenic risk scores. *medRxiv.* 2020:19012021.
- Chasioti D, Yan J, Nho K, Saykin AJ. Progress in polygenic composite scores in Alzheimer's and other complex diseases. *Trends Genet.* 2019;35(5):371-382.
- Sleegers K, Bettens K, De Roeck A, et al. A 22-single nucleotide polymorphism Alzheimer's disease risk score correlates with family history, onset age, and cerebrospinal fluid Abeta42. *Alzheimers Dement.* 2015;11(12):1452-1460.
- Desikan RS, Fan CC, Wang Y, et al. Genetic assessment of age-associated Alzheimer disease risk: development and validation of a polygenic hazard score. *PLoS Med.* 2017;14(3):e1002258.
- Escott-Price V, Myers A, Huettelmann M, Shuai M, Hardy J. Polygenic risk score analysis of Alzheimer's disease in cases without APOE4 or APOE2 alleles. *J Prev Alzheimers Dis.* 2019;6(1):16-19.
- Leonenko G, Sims R, Shuai M, et al. Polygenic risk and hazard scores for Alzheimer's disease prediction. *Ann Clin Transl Neurol.* 2019;6(3):456-465.
- Escott-Price V, Sims R, Bannister C, et al. Common polygenic variation enhances risk prediction for Alzheimer's disease. *Brain.* 2015;138(Pt 12):3673-3684.
- van der Lee SJ, Wolters FJ, Ikram MK, et al. The effect of APOE and other common genetic variants on the onset of Alzheimer's disease and dementia: a community-based cohort study. *Lancet Neurol.* 2018;17(5):434-444.
- Licher S, Ahmad S, Karamujic-Comic H, et al. Genetic predisposition, modifiable-risk-factor profile and long-term dementia risk in the general population. *Nat Med.* 2019;25(9):1364-1369.
- Lourida I, Hannon E, Littlejohns TJ, et al. Association of lifestyle and genetic risk with incidence of dementia. *JAMA.* 2019;322(5):430-437.
- Chouraki V, Reitz C, Maury F, et al. Evaluation of a genetic risk score to improve risk prediction for Alzheimer's disease. *J Alzheimer's Dis.* 2016;53(3):921-932.
- Corrada MM, Paganini-Hill A, Berlau DJ, Kawas CH. Apolipoprotein E genotype, dementia, and mortality in the oldest old: the 90+ Study. *Alzheimers Dement.* 2013;9(1):12-18.
- Heijmans BT, Slagboom PE, Gussekloo J, et al. Association of APOE epsilon2/epsilon3/epsilon4 and promoter gene variants with dementia but not cardiovascular mortality in old age. *Am J Med Genet.* 2002;107(3):201-208.
- Juva K, Verkkoniemi A, Viramo P, et al. APOE epsilon4 does not predict mortality, cognitive decline, or dementia in the oldest old. *Neurology.* 2000;54(2):412-415.
- Mengel-From J, Christensen K, McGue M, Christiansen L. Genetic variations in the CLU and PICALM genes are associated with cognitive function in the oldest old. *Neurobiol Aging.* 2011;32(3):554.e557-511.
- Mengel-From J, Thinggaard M, Lindahl-Jacobsen R, McGue M, Christensen K, Christiansen L. CLU genetic variants and cognitive decline among elderly and oldest old. *PLoS One.* 2013;8(11):e79105.
- Bengtsson C, Ahlqvist M, Andersson K, Bjorkelund C, Lissner L, Soderstrom M. The prospective population study of women in Gothenburg, Sweden, 1968-69 to 1992-93. A 24-year follow-up study with special reference to participation, representativeness, and mortality. *Scand J Prim Health Care.* 1997;15(4):214-219.
- Lissner L, Skoog I, Andersson K, et al. Participation bias in longitudinal studies: experience from the population study of women in Gothenburg, Sweden. *Scand J Prim Health Care.* 2003;21(4):242-247.
- Rinder L, Rouse S, Steen B, Svanborg A. Seventy-year-old people in Gothenburg. A population study in an industrialized Swedish city. *Acta Med Scand.* 1975;198(5):397-407.
- Skoog I. Psychiatric epidemiology of old age: the H70 study—the NAPE lecture 2003. *Acta Psychiatr Scand.* 2004;109(1):4-18.
- Rydberg Sterner T, Ahlner F, Blennow K, et al. The Gothenburg H70 Birth cohort study 2014-16: design, methods and study population. *Eur J Epidemiol.* 2019;34(2):191-209.
- Blauwendraat C, Faghri F, Pihlstrom L, et al. NeuroChip, an updated version of the NeuroX genotyping platform to rapidly screen for variants associated with neurological diseases. *Neurobiol Aging.* 2017;57:247.e249-247.e213.
- Blennow K, Ricksten A, Prince JA, et al. No association between the alpha2-macroglobulin (A2M) deletion and Alzheimer's disease, and no change in A2M mRNA, protein, or protein expression. *J Neural Transm (Vienna).* 2000;107(8-9):1065-1079.
- Guo X, Waern M, Sjogren K, et al. Midlife respiratory function and incidence of Alzheimer's disease: a 29-year longitudinal study in women. *Neurobiol Aging.* 2007;28(3):343-350.
- Skoog I, Nilsson L, Palmertz B, Andreasson LA, Svanborg A. A population-based study of dementia in 85-year-olds. *N Engl J Med.* 1993;328(3):153-158.
- American Psychiatric Association. Diagnostic and Statistical Manual of Mental Health Disorders (DSM-III-R). American Psychiatric Association; 1987.
- Breitner JC, Wyse BW, Anthony JC, et al. APOE-epsilon4 count predicts age when prevalence of AD increases, then declines: the Cache County Study. *Neurology.* 1999;53(2):321-331.
- Wolters FJ, Yang Q, Biggs ML, et al. The impact of APOE genotype on survival: results of 38,537 participants from six population-based cohorts (E2-CHARGE). *PLoS One.* 2019;14(7):e0219668-e0219668.
- Skoog I, Hesse C, Aevansson O, et al. A population study of apoE genotype at the age of 85: relation to dementia, cerebrovascular disease, and mortality. *J Neurol Neurosurg Psychiatry.* 1998;64(1):37-43.
- Juva K, Verkkoniemi A, Viramo P, et al. Apolipoprotein E, cognitive function, and dementia in a general population aged 85 years and over. *Int Psychogeriatr.* 2000;12(3):379-387.
- Rizzuto D, Feldman AL, Karlsson IK, Dahl Aslan AK, Gatz M, Pedersen NL. Detection of dementia cases in two Swedish health registers: a validation study. *J Alzheimer's Dis.* 2018;61(4):1301-1310.
- Skoog I, Börjesson-Hanson A, Kern S, et al. Decreasing prevalence of dementia in 85-year olds examined 22 years apart: the influence of education and stroke. *Sci Rep.* 2017;7(1):6136.

35. Najjar J, Ostling S, Gudmundsson P, et al. Cognitive and physical activity and dementia: a 44-year longitudinal population study of women. *Neurology*. 2019;92(12):e1322-e1330.

SUPPORTING INFORMATION

Additional supporting information may be found online in the Supporting Information section at the end of the article.

How to cite this article: Najjar J, Van der Lee S, Joas E, et al. Polygenic risk scores for Alzheimer's disease are related to dementia risk in APOE ϵ 4 negatives. *Alzheimer's Dement*. 2021;13:e12142. <https://doi.org/10.1002/dad2.12142>