



# Evaluating the adaptive evolutionary convergence of carnivorous plant taxa through functional genomics

Gregory L. Wheeler and Bryan C. Carstens

Department of Evolution, Ecology, & Organismal Biology, The Ohio State University, Columbus, OH, United States of America

## ABSTRACT

Carnivorous plants are striking examples of evolutionary convergence, displaying complex and often highly similar adaptations despite lack of shared ancestry. Using available carnivorous plant genomes along with non-carnivorous reference taxa, this study examines the convergence of functional overrepresentation of genes previously implicated in plant carnivory. Gene Ontology (GO) coding was used to quantitatively score functional representation in these taxa, in terms of proportion of carnivory-associated functions relative to all functional sequence. Statistical analysis revealed that, in carnivorous plants as a group, only two of the 24 functions tested showed a signal of substantial overrepresentation. However, when the four carnivorous taxa were analyzed individually, 11 functions were found to be significant in at least one taxon. Though carnivorous plants collectively may show overrepresentation in functions from the predicted set, the specific functions that are overrepresented vary substantially from taxon to taxon. While it is possible that some functions serve a similar practical purpose such that one taxon does not need to utilize both to achieve the same result, it appears that there are multiple approaches for the evolution of carnivorous function in plant genomes. Our approach could be applied to tests of functional convergence in other systems provided on the availability of genomes and annotation data for a group.

Submitted 27 October 2017  
Accepted 13 January 2018  
Published 31 January 2018

Corresponding author  
Gregory L. Wheeler,  
wheeler.1008@osu.edu,  
gwheeler.eb@gmail.com

Academic editor  
Todd Vision

Additional Information and  
Declarations can be found on  
page 21

DOI 10.7717/peerj.4322

© Copyright  
2018 Wheeler and Carstens

Distributed under  
Creative Commons CC-BY 4.0

OPEN ACCESS

**Subjects** Bioinformatics, Evolutionary Studies, Genomics, Plant Science

**Keywords** Carnivorous plants, Gene Ontology, Functional genomics, Convergent evolution

## INTRODUCTION

Convergent evolution provides some of the strongest support for the theory of evolution through natural selection. In the case of evolutionary convergence, organisms that may have very different evolutionary histories (as measured phylogenetically), are driven by similar selective pressures to a highly similar phenotype (*Losos, 2011*). These selective pressures repeatedly create the same adaptive syndrome—a set of characteristics which come together to allow a specific lifestyle or perform a certain task (*Reich et al., 2003*). In many instances in the past, convergent evolutionary syndromes have confounded taxonomists, who (for example) mistakenly grouped New-World and Old-World vultures (*Seibold & Helbig, 1995*), all marine mammals (*Foote et al., 2015*), and many disparate lineages of microscopic organisms (*Scamardella, 1999; Palenik & Haselkorn, 1992; Gupta, 2000*), into clades which ultimately proved to be paraphyletic.

While phenotypic features of convergent taxa will appear superficially similar, they are not expected to share genomic similarity due to their evolutionary independence. Large number of possible sequence combinations can result in the same protein (Storz, 2016) and potentially large number of protein forms and combinations of multiple proteins that can produce the same effect (Bork, Sander & Valencia, 1993; Doolittle, 1994), so objectively defining an evolutionary syndrome using genomic data is challenging. One possible solution is to define these syndromes as a set of discrete functions rather than as a set of nucleotide sequences. In this way, convergent syndromes are described in the same way they have evolved—adaptively by function—and can be evaluated as convergent or not based on sequence similarity. Gene Ontology (GO) coding (Ashburner et al., 2000) provides an objective system by which to achieve this goal. By designating numerical codes for all possible biological activities and components, ranked hierarchically from general to specific, synonymy of function can easily be measured between even distantly related organisms throughout this text, when a discrete GO term is being referenced, it will be presented in italics, whereas when functions are being referenced in the more general sense, it will be presented in plain text. Using either experimentally determined gene/protein function or sequence similarity to previously identified functions, the activities of individual genes are paired with specific numeric codes. Gene Ontology analyses have been used in other studies to determine the functional components to a variety of traits, adaptations and physiologies of interest, including adaptation to high altitudes (Qiu et al., 2012), depth tolerance in deep-sea bacteria (Vezi et al., 2005), and a number of human disorders (Ahn et al., 2003; Holmans et al., 2009); however, these have identified known genes of interest and then drawn conclusions of function *post hoc*. Rather than assigning the Gene Ontology codes first and subsequently determining the functions of particular interest as has been done previously, we can select functions of expected relevance *a priori* in order to allow for quantitative testing of their adaptive relevance by comparing functions in genomes in species that exhibit a convergent function. To the best of our knowledge, this is a novel approach.

### **Plant carnivory**

One particularly notable convergent polyphyletic group is that of the carnivorous (alternatively, insectivorous) plants. Carnivorous plant taxa were originally classified as a single group due to their most striking and apparent feature, while disregarding features that would typically be used to define a botanical group (e.g., floral morphology; Primack, 1987). Subsequent work has demonstrated that a substantial number of phylogenetically distant plant lineages have evolved a carnivorous lifestyle (Givnish, 2015), presumably in response to similar selective pressures. As different lineages (or branches of the same lineage) have approached the process of insect trapping and digestion in different ways, this has in some cases made the defining of a plant as carnivorous or non-carnivorous difficult (Lloyd, 1934).

Givnish et al. (1984) defines a carnivorous plant as one that fulfills two requirements: it must gain some detectable fitness benefit from animal remains in contact with its surfaces, and it must possess adaptations that facilitate the attraction, capture, or digestion

of these prey animals. By considering only functional attributes, this definition allows a wide range of variability in the evolutionary histories and routes of adaptation of plants that are considered carnivores. Currently, nearly 600 angiosperm species are recognized as carnivorous, representing as many as nine independent origins across five families (Givnish, 2015). In addition, investigations into possible carnivorous traits in non-vascular plants such as liverworts are ongoing (Hess, Frahm & Theisen, 2005), suggesting that evolutionary shifts in nutrient acquisition strategies are perhaps even more common than currently recognized. The multiple origins and evolutionary convergence demonstrated by radiations such as those in *Nepenthes* and *Sarracenia* indicate that plant carnivory is not phylogenetically constrained; rather, it is likely that these plants are limited by their specific nutrient economics (Bloom, Chapin & Mooney, 1985), which allow them to outcompete more typical nutrient acquisition strategies only in specific habitats (Ellison & Gotelli, 2001; Ellison et al., 2003).

Carnivorous plants occupy habitat where there is little competition for sunlight. Previous studies have shown that, by leaf mass, many carnivorous plants have poor photosynthetic yield (Ellison & Farnsworth, 2005; Ellison, 2006), a likely consequence of the adaptations of their leaves for the capture of insect prey. Additionally, some carnivorous plants invest photosynthetic carbon in the fluids or secretions utilized for prey capture. In *Drosera*, some 3–6% this carbon, which would otherwise be expended on reproduction or vegetative growth, is used to capture prey (Adamec, 2002). As a result of these compromises, carnivorous plants only outcompete other plants in habitat where the resources that they sacrifice as a consequence of the carnivorous lifestyle (carbon, water, sunlight) are plentiful, while the resources they specialize in obtaining (nitrogen, phosphorus) are scarce. These environments are likely to be wet and sunny, with acidic, nutrient-deficient soils (Givnish et al., 1984; Ellison & Gotelli, 2001).

### Carnivory-associated functions

The most apparent trait of carnivorous plants is their ability to break down prey items using digestive enzymes. As digesting animal tissue is presumably not in the repertoire of ancestral angiosperms, a question of interest is how these enzymes have evolved. In many cases, genes for digestive enzymes are apparent modifications of genes utilized in resistance and correspond to pre-existing pathways related to herbivores and pathogens (Schulze et al., 2012; Fukushima et al., 2017) or other processes present in most plants. Examples of such enzymes include chitinases, which were modified from anti-fungal and insect herbivore deterrence enzymes (Hatano & Hamada, 2008; Renner & Specht, 2012), proteases, likely derived from those involved in bacterial resistance (Mithöfer, 2011), and lipases, which are involved in metabolizing stored energy (Seth et al., 2014). Furthermore, it appears that enzymes with similar functions have evolved convergently in taxa with independent carnivorous origins (Fukushima et al., 2017), suggesting that it may not be difficult to evolve into the carnivorous niche. However, digestive enzymes may also be obtained through symbiotic interactions with micro- (Koopman et al., 2010; Caravieri et al., 2014) or macroorganisms (Midgley & Stock, 1998; Anderson & Midgley, 2003), suggesting that it may be possible to evolve into the carnivorous niche in part by appropriating the

digestive enzymes of other species. While these plants fit *Givnish et al.*'s (1984) definition of carnivores, these digestion-associated genes would not be identifiable in the plant itself and thus would not contribute to functional overrepresentation in genomic analyses.

In addition to modifications or resistance genes or the appropriation of enzymes produced by symbionts, evidence suggests that genes used in nutrient transport are particularly important to the carnivorous lifestyle. Plant genomes possess as many as 10 times the number of peptide transport genes compared to other eukaryotes (*Stacey et al., 2002*), in addition to a wide variety of transport pathways for nitrate and ammonium (*Williams & Miller, 2001*). In carnivorous plants, the relative number of these pathways may be even higher. For example, in a transcriptomic analysis of *Utricularia gibba* L., a carnivorous bladderwort with a minute genome of only 80 megabases, 77 unique sequences corresponding to nitrogen transport were identified (*Ibarra-Laclette et al., 2011*). Modification and specialization has also occurred in transporters for other resources. For plants with traps involving rapid movement such as *Dionaea muscipula* Sol. ex J.Ellis, uptake of prey nutrients may be coupled to a trap's electrical potential (*Scherzer et al., 2013*). Modified pathways for osmolite uptake have been identified in *D. muscipula*, which uses the HKT1-type ion channel to absorb sodium without disrupting the action potential of the trap (*Böhm et al., 2016*). Similar adaptations may benefit less active traps as well, as for example in *Sarracenia flava* L. amino acid uptake is dependent on a potassium ion gradient (*Plummer & Kethley, 1964*).

Genomics represent a new approach to investigate the evolution of novel organismal function. While the origin of novel biological functions and their role in adaptation to new habitats and ecological niches has been an important topic in evolutionary biology since the inception of the field (*Darwin & Darwin, 1888*), we now know that genes may be preferentially duplicated and modified, a common route to increased complexity and the possibility of new structures (*Vandenbussche et al., 2003*) and pathways (*Monson, 2003*). In more extreme cases, a whole-genome duplication event precedes an episode of major adaptive change (*Soltis et al., 2009*), leaving a lineage with thousands of redundant additional genes on which evolutionary processes can act. Gene copies with adaptive value are preferentially retained, while others are silenced and eventually lost (*Adams & Wendel, 2005*). If this general pattern is true of the genes involved in plant carnivory, such genes should be identifiable on the basis of function and would be expected to show a signal of overrepresentation in the genome.

Gene Ontology coding is an essential tool for resolving the issue of relating functionally similar (but non-homologous) genes—by design, genes that differ substantially in ancestry but provide the same function should be assigned the same Gene Ontology code(s). These descriptors are originally assigned based on experimental studies of specific genes in model organisms, which later allows non-experimental assignment using sequence homology; however, as automated annotation must be based on the content of a reference database, known biases in these databases must be considered. For example, studies addressing multiple genes often focus on a specific gene class within a specific organism, resulting in an overemphasis of that class in that organism and its relatives; experiment-based annotations will be far more common for model organisms or those of economic interest; and, as

more sequences are assigned function through extrapolation rather than experimentation, those assignments can be further propagated, progressively increasing the distance from the original experimental basis (Altenhoff *et al.*, 2012; Thomas *et al.*, 2012). In particular, due to these biases and methods of accurately matching samples to references, there is concern that functional divergence may be missed in cases where divergent sequences remain similar, or conversely, that erroneous function may be assigned when there is substantial divergence from the nearest-matching reference sequence. Despite this, it has been previously shown that known functionally-divergent paralogs also diverged (by 32% on average) in GO codes assigned by automation (Blanc & Wolfe, 2004) and that genes typically retain highly similar functions at amino acid identity levels as low as 40% (Sangar *et al.*, 2007). Thus, there is reason to believe that identifying function from sequence data should be sufficiently accurate at our desired level of specificity.

### Hypotheses

This study seeks to test for a functional genetic signal of evolutionary convergence at the level of the genome. Specifically, it seeks to test whether or not a convergently evolved functional syndrome (i.e., metabolic pathways of carnivory) will rely on the same functions across lineages (as seen in Yang *et al.*, 2015). Three possibilities will be considered. First, organisms sharing this syndrome may not be genomically distinct from others. This is possible if the functional changes required for this syndrome are not substantial at the genome level (e.g., changes based on slight modification of regulatory elements or alternative splicing), or if neutral variation among taxa is so substantial that the changes fall within the range of normal lineages. In this case, no signal should be detected differentiating experimental taxa from control samples (i.e., GO codes matching to expected carnivory-associated functions are not overrepresented). Second, a syndrome may require a specific set of functions at high representational levels in every lineage where it arises. This would be expected if the use of certain molecular machinery were unavoidable for a task, preventing evolution of the syndrome by any other pathways. In this case, it would be expected that a strong signal would be detected for functions across all experimental taxa (i.e., GO codes matching to expected carnivory-associated functions are uniformly overrepresented across carnivorous taxa). Lastly, a syndrome may indeed make use of some functions from a set list each time it arises, but not necessarily the same functions in each case. This would occur where there are several ways to address the same problem. A result where many of the predicted functions show strong signal, but with greatly different findings in each taxon, would support this model (i.e., GO codes matching to different carnivory-associated functions are overrepresented in each carnivorous taxon).

## MATERIALS & METHODS

### Identification of carnivory-associated functions

A literature review was conducted to develop a reference set of functions previously found to be associated with plant carnivory. A topic search was performed on Web of Science in December, 2016 with the following parameters: (“carnivorous plant” OR “insectivorous plant”) AND (“gene” OR “genome” OR “transcriptome” OR “protein”) AND (“digestion”

**Table 1 Carnivory-associated functions identified via literature review.** Functions were matched to Gene Ontology terms and codes using the AmiGO2 database (Balsa-Canto et al., 2016). In cases where multiple GO codes are given, they are equivalent to or deprecated from the best-matching current term. See Table S1 for more information.

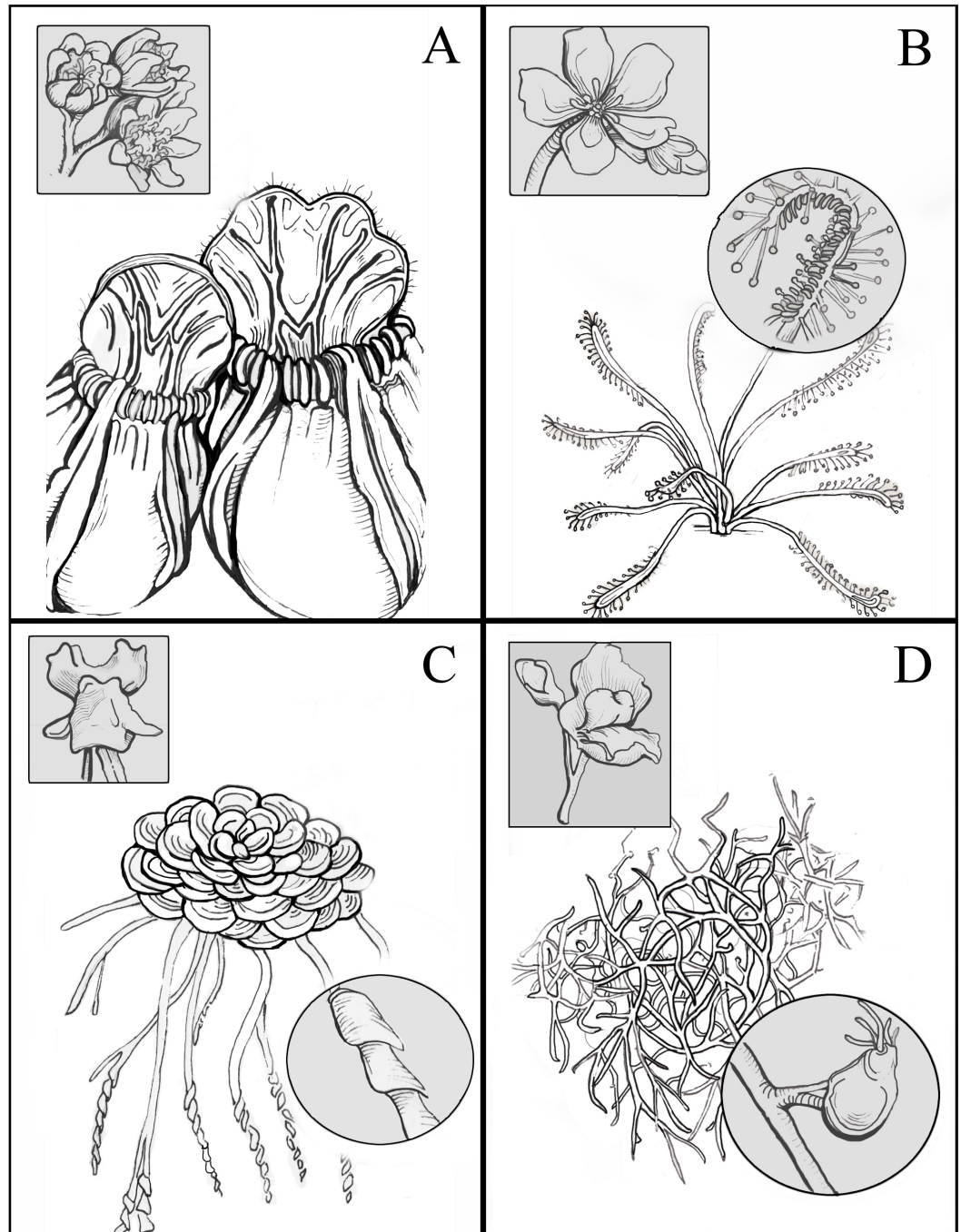
Gene Ontology term	GO code	Gene Ontology term	GO code
actin filament	GO:0005884	heat shock protein activity	GO:0042026; GO:0006986; GO:0034620
alpha-galactosidase activity	GO:0004557	lipase activity	GO:0016298
alternative oxidase activity	GO:0009916	lipid transport	GO:0006869
ammonium transmembrane transport	GO:0008519; GO:0072488	methylammonium channel activity	GO:0015264
aspartic-type endopeptidase activity	GO:0004190	peroxidase activity	GO:0004601
ATP:ADP antiporter activity	GO:0005471	phosphatase activity	GO:0016791
ATPase activity	GO:0016887	phospholipase activity	GO:0004620
beta-galactosidase activity	GO:0004565	polygalacturonase activity	GO:0004650
beta-glucanase activity	GO:0052736	polygalacturonase inhibitor activity	GO:0090353
chitinase activity	GO:0004568	protein homodimerization activity	GO:0042803
cinnamyl-alcohol dehydrogenase activity	GO:0045551	ribonuclease activity	GO:0004540
cyclic-nucleotide phosphodiesterase activity	GO:0004112	serine-type carboxypeptidase activity	GO:0004185
cysteine-type peptidase activity	GO:0008234	sodium ion transmembrane transporter activity	GO:0022816
endonuclease complex	GO:1905348	superoxide dismutase activity	GO:0004784
formate dehydrogenase complex	GO:0009326	symplast	GO:0055044
fructose-bisphosphate aldolase activity	GO:0004332	thioglucosidase activity	GO:0019137
glucosidase complex	GO:1902687	water channel activity	GO:0015250
glutathione transferase activity	GO:0004364	xylanase activity	GO:0097599

OR “transport”), producing 21 results. Publications discussing specific genes (Owen, 1999; An, Fukusaki & Kobayashi, 2002; Scherzer et al., 2013; Böhm et al., 2016) or overviews of putatively carnivory-associated genes (Ibarra-Laclette et al., 2011; Schulze et al., 2012; Rottloff et al., 2016) in sequenced carnivorous plant taxa were included (details in Table S1). From *Dionaea muscipula*, functions of proteins identified via proteomic analysis of the trap fluid (Schulze et al., 2012) were listed, with the addition of genes related to transport that had been specifically targeted by other studies (Owen, 1999; Böhm et al., 2016). Similarly, in *Nepenthes*, proteomic analysis of trap fluid released a list of functions likely to be associated with plant carnivory (Rottloff et al., 2016) with other studies assaying for a specific digestion-associated enzyme and detecting transport activity via traps’ glandular symplasts (An, Fukusaki & Kobayashi, 2002; Scherzer et al., 2013, respectively). In the bladderwort *Utricularia gibba* L., transcriptomic analysis was used to detect statistically increased expression of genes in traps and leaves putatively associated with carnivory (Ibarra-Laclette et al., 2011). Gene function terms, as given by these publications, were cross-referenced with the AmiGO2 Gene Ontology Database (Balsa-Canto et al., 2016) and matched to discrete GO codes that accurately represent their functions (Table 1). Of 54 total terms selected, 36 final GO codes were matched, with five terms synonymized and combined with matched terms and 13 terms having no appropriate match.

## Taxon sampling

GenBank's list of assessed plant genomes was surveyed for the inclusion of plants historically considered to be carnivorous. Four were available: *Cephalotus follicularis* (Fukushima et al., 2017), *Drosera capensis* (Butts, Bierma & Martin, 2016), *Genlisea aurea* (Leushkin et al., 2013), and *Utricularia gibba* (Lan et al., 2017). The carnivorous taxa sampled represent three independent origins of plant carnivory (*Genlisea* and *Utricularia* likely sharing a single origin) in three plant orders (Caryophyllales, Oxalidales, and Lamiales). They also exemplify four different strategies for prey-capture. *Cephalotus* is a pitcher/pitfall trap, using a nectar lure, slippery rim, and downward-facing projections to guide prey into a digestive soup and prevent their escape; this strategy is also seen in *Nepenthes*, most *Sarracenia*, and some carnivorous bromeliads. *Drosera* is a sticky-trap plant, with glandular trichomes on its leaves that secrete both sticky compounds to prevent prey's escape and digestive enzymes to break them down; *Pinguicula* and *Byblis* also use this strategy. *Genlisea* is considered a lobster-pot trap, where prey species are guided to a small, funnel-like opening, through which exit is impossible; *Sarracenia psittacina* and, arguably, *Darlingtonia californica* employ this strategy. Lastly, *Utricularia gibba*, an aquatic carnivorous plant, uses a number of air-filled bladders to capture and digest prey. A trigger hair is stimulated as potential prey investigates the trap, releasing an air bubble contained within; the resulting vacuum pulls the prey inside, and the trap closes behind them. While no other carnivorous taxa possess this specific form, it does share some characteristics (a fast-moving trap activated by the stimulation of a trigger hair) with *Aldrovanda* and *Dionaea muscipula*. The trap characteristics, floral morphology, and overall growth form of the carnivorous taxa included in this study are depicted in Fig. 1.

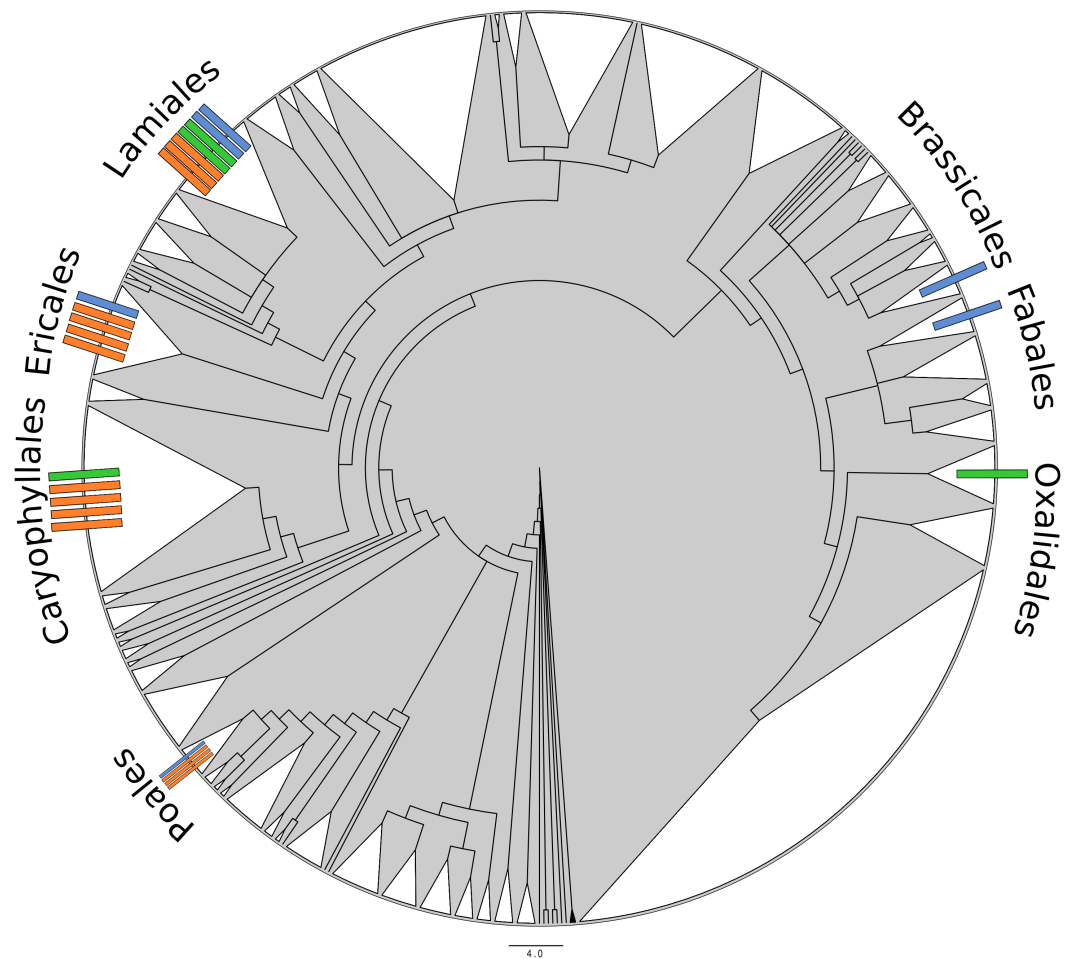
Non-carnivorous plants were also surveyed in order to establish a control range of "typical" flowering plants. All assessed plant genomes for which Gene Ontology-coded annotations are already available were included: *Arabidopsis thaliana* (Swarbreck et al., 2008), *Boea hygrometrica* (Xiao et al., 2015), *Glycine soja* (Kim et al., 2010; Qi et al., 2014), and *Oryza sativa* (Ohyanagi, 2006). Note that one of the carnivorous taxa, *Genlisea aurea*, also possessed GO annotations. Lastly, the genomes of the two non-carnivorous plants most closely related to carnivorous taxa were included: *Ocimum tenuiflorum* (Upadhyay et al., 2015), closest sequenced relative of *Byblis*, *Genlisea*, *Pinguicula*, and *Utricularia*; and *Actinidia chinensis* (Swarbreck et al., 2008), closest sequenced relative of *Darlingtonia*, *Heliophora*, *Roridula*, and *Sarracenia*. *Boea hygrometrica*, included for its available annotations, is also within the order of *Genlisea* and *Utricularia*. The reference-range taxa selected cover five orders (Brassicales, Ericales, Fabales, Lamiales, and Poales), including both Monocots and Eudicots; thus, these samples can be considered a reasonable representation of the diversity and variation of angiosperms as a whole (Fig. 2). While pairwise sampling and analysis of related carnivorous and non-carnivorous taxa would be optimal to explicitly control for phylogenetic effects, this is unfortunately not possible at present due to the lack of sequenced genomes for many plant orders and the scarcity of annotated plant genomes in general. However, we expect our current reference sampling



**Figure 1** Illustrations of the carnivorous taxa included in this study. Floral characteristics (square inset) and trap morphology (circle inset) are shown, as well as overall growth form. Taxa shown are (A) *Cephalotus follicularis*, (B) *Drosera capensis*, (C) *Genlisea aurea*, and (D) *Utricularia gibba*. Illustrations by Abbie Zimmer, 2017, included with permission.

Full-size  DOI: [10.7717/peerj.4322/fig-1](https://doi.org/10.7717/peerj.4322/fig-1)





**Figure 2** Radial phylogeny of all angiosperms, indicating the position of taxa relevant to this study. White-filled triangles indicate monophyletic plant orders. Each bar indicates one genus. Blue indicates a typical/non-carnivorous control taxon included in this study; green indicates a carnivorous taxon included in this study; orange indicates a carnivorous genus (as listed in *Givnish, 2015*) for which no genome is available. Created from tree data found in *Soltis et al. (2011)*, visualized in FigTree (*Rambaut, 2009*) and manually edited in InkScape.

Full-size  DOI: [10.7717/peerj.4322/fig-2](https://doi.org/10.7717/peerj.4322/fig-2)

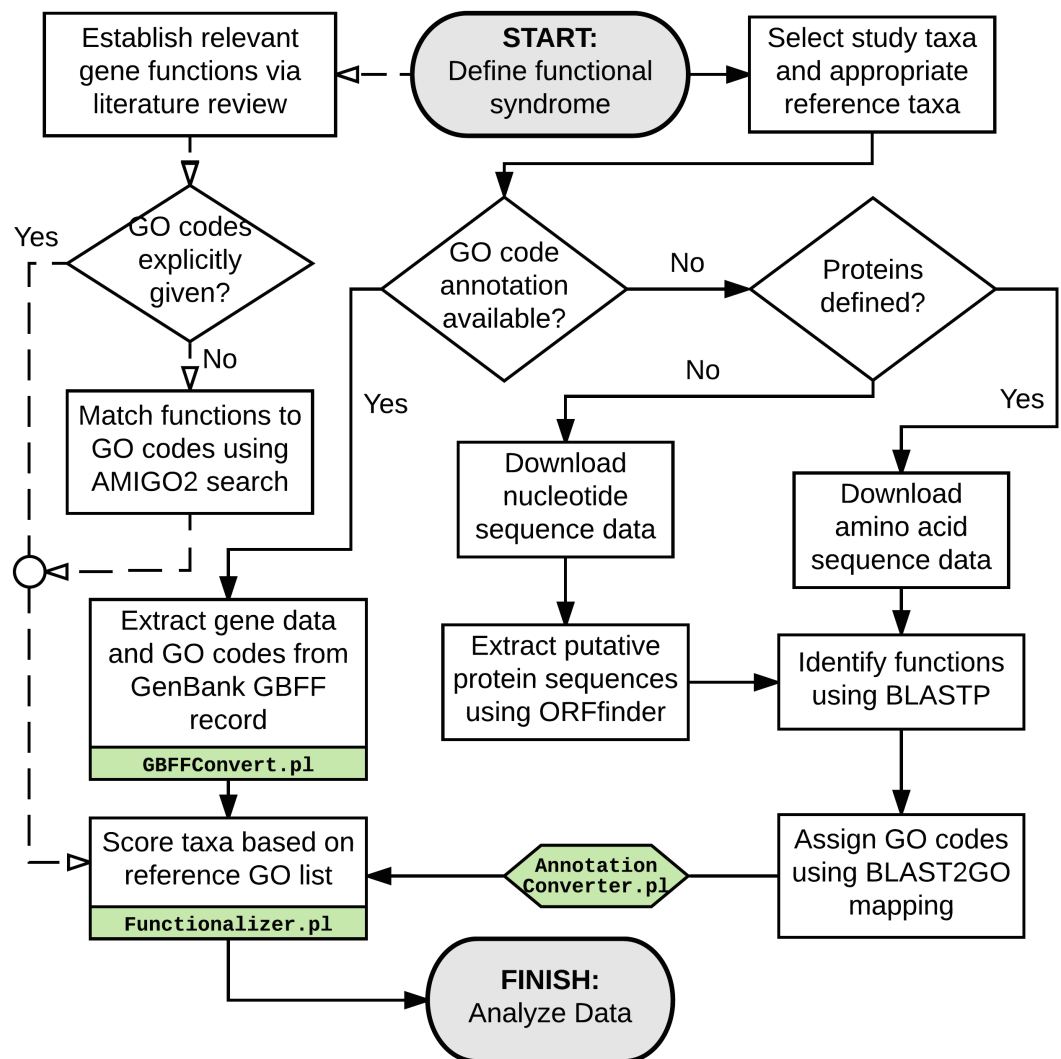
design, which includes both non-carnivorous representatives from several carnivore-containing orders and a wide phylogenetic range of taxa overall, to somewhat mitigate this potential source of bias.

### Data processing

For taxa lacking GO annotation but having putative genes already identified (e.g., *Cephalotus follicularis*), FASTA-formatted amino acid sequence data was downloaded. The remaining samples (*Actinidia chinensis*, *Ocimum tenuiflorum*, *Drosera capensis*, and *Utricularia gibba*) lacked any usable annotation data. While ideally genes and gene functions are predicted by in-depth transcriptomic studies, the training of species-specific gene identification models, and then confirmed by individual-gene experimental studies, this

is simply unfeasible for studies of diverse sets of non-model taxa. Instead, predictions of genes had to be made on the simpler basis of reading frame detection. Unannotated genomes were downloaded as FASTA-formatted nucleotide sequence and processed with ORFFinder (Wheeler et al., 2003) using parameters: (-ml 450 -n false). These parameters were selected to identify putative genes and extract the predicted amino acid sequence. While some error in gene prediction are still likely from this method, parameters were set with the hope of preventing truncated or erroneously-predicted genes from entering the pipeline, e.g., very short of less than 150 amino acids and those contained entirely within the reading frame of another longer gene. Amino acid sequence data was then analyzed via BLAST-P on the Ohio Supercomputer (Ohio Supercomputer Center, 1987) with the following parameters: (-db nr -task blastp-fast -seg yes -num\_alignments 10 -max\_hsps 2 -evalue 1e-3), searching against the non-redundant protein sequence database (Pruitt, Tatusova & Maglott, 2007). BLAST outputs were imported into Blast2GO (Conesa et al., 2005) and matched to GO codes using the automated “Mapping” function. Exported mapping results were then processed via the custom “AnnotationConverter.pl” script, to convert data into a more accessible simplified text format. For taxa already accompanied by GO-coded gene annotations (*Arabidopsis thaliana*, *Boea hygrometrica*, *Glycine soja*, *Oryza sativa*, and *Genlisea aurea*), GenBank GBFF files were downloaded. The custom Perl script “GBFFConverter.pl” was used to extract genes with associated GO information as simplified text. Using the “Functionalizer.pl” Perl script, the resulting text data was then scanned for GO codes matching to the hypothesized carnivory-associated functions selected. Counts of carnivory-associated genes were weighted against total number of genes for which at least one function could be assigned, with the resulting proportions (count of function, per thousand genes) used for subsequent statistical analyses. This process is summarized graphically in Fig. 3. Putative genes that could not be assigned to any function, or that were assigned functions that could not be mapped to any GO codes, were not included in total gene counts or proportional weighting of data. By using a conservative *E*-value parameter in BLAST assignment of protein functions, we hoped to filter out low-certainty annotations, particularly those potentially arising from erroneously-predicted protein sequences. Following this process, a data normalization step was performed to correct for differences in tendency to detect certain functions in BLAST searches vs. from GenBank annotation data.

To correct for differences in the likelihood of assigning a given function between samples accompanied by previous annotation and those coded using BLAST and mapping, *Arabidopsis thaliana* was analyzed by both methods, with the additional data set following the nucleotide sequence data preparation steps detailed above. The raw results of BLAST-annotated data were then multiplied by the quotient of the pre-annotated data results and the *A. thaliana* BLAST data results to produce corrected gene representation data. These data, along with pre-annotated samples that did not require correction, were used in all statistical tests; raw data were subjected to the same analyses, to ensure that the magnitude of changes in results would not be extreme (suggesting the need for more complex methods of error correction). The overall assessment of carnivory-associated function (“Total Carnivorous” vs. “None of the Above”) was recalculated for each taxon



**Figure 3** Flowchart detailing the preparation and processing steps to obtain gene function representation data used for subsequent statistical analyses. Solid lines indicate processing of sampled taxa, while dashed lines indicate preparation of the reference functional set by which the taxa will be evaluated. Green boxes indicate stages utilizing custom data-processing scripts (available in [Supplemental Information 4](#)).

Full-size [DOI: 10.7717/peerj.4322/fig-3](https://doi.org/10.7717/peerj.4322/fig-3)

from the adjusted values of each function and the total gene count (“Total”). Statistical significance was considered to have six levels (“NS”, “.”, “\*”, “\*\*”, “\*\*\*”, “\*\*\*\*”); number of levels changed—either increasing or decreasing—were noted. The raw values used in these corrections are listed in [Table S2](#).

### Statistical analyses

Species were divided into “carnivorous” and “non-carnivorous” groups and analyzed on 25 criteria (24 carnivory-associated functions, plus the sum representation of all carnivory-associated functions in the genome) using a series of upper-tailed *t*-tests. To correct for multiple tests, Storey’s correction, which uses a Bayesian approach to determine

**Table 2** General statistics of the plant genomes included in this study. “Sequence (Mb)” indicates the available genome sequence in million base pairs. “# Genes” indicates the number of putative genes identified, either as indicated in GenBank documentation or detected via ORFfinder. “% Results” indicates the portion of genes that could be associated with at least one GO code. “GO Hits” indicates the total number of GOs matched to a gene across all genes. The number of unique codes present in this number is given as “Unique GOs”.

	Sequence (Mb)	# Genes	% Results	GO Hits	Unique GOs
<i>A. chinensis</i>	604.2	70,250	54.5%	182,315	3,830
<i>A. thaliana</i>	119.7	48,350	56.3%	173,184	6,503
<i>B. hygrometrica</i>	1,521.3	47,778	23.2%	76,891	2,916
<i>G. soja</i>	863.6	50,399	51.4%	76,044	1,421
<i>O. sativa</i>	382.8	28,382	45.7%	35,445	1,262
<i>O. tenuiflorum</i>	321.9	34,920	47.8%	76,891	2,916
<i>C. follicularis</i>	1,614.5	36,667	42.2%	80,567	4,664
<i>D. capensis</i>	263.8	89,073	24.5%	113,593	3,723
<i>G. aurea</i>	43.3	17,685	96.6%	79,194	4,883
<i>U. gibba</i>	100.7	32,621	40.5%	64,529	3,276

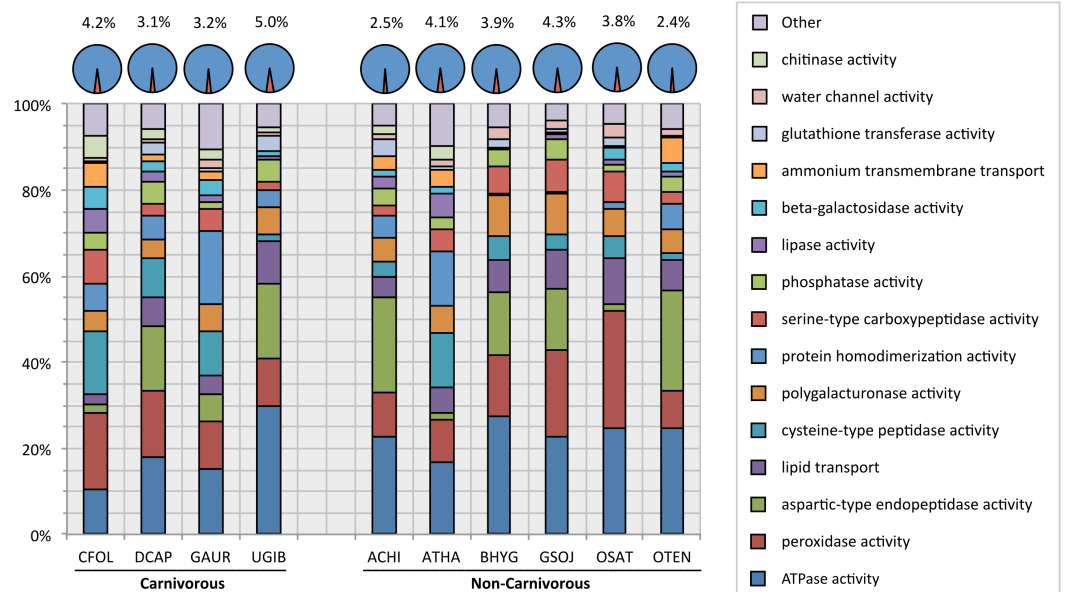
realistic false discovery rate (FDR) for the numerous tests involved in genome-wide studies (Storey, 2003; Storey & Tibshirani, 2003; Dabney, Storey & Warnes, 2010) was applied, with resulting  $q$ -values used to assess significance ( $\alpha = 0.05$ ).

Carnivorous taxa were also tested individually, against reference normal distributions created by assessing the values seen in non-carnivorous taxa. Twenty-five reference distributions were used (24 functions + overall), each defined by the median and standard deviation value determined for that function in the non-carnivorous reference taxa. Statistical evaluations were conducted via a series of upper-tailed  $Z$ -tests, with Storey’s correction then used within each series of tests (four sets of 25 tests) to account for repeat testing effects.

## RESULTS

### Genome information

A general assessment of all included genomes for genome size, total gene number, and number of unique Gene Ontology codes identified (a representation of diversity of functions encoded) showed largely overlapping ranges of values (Table 2). Both the largest and smallest genomes analyzed were to carnivorous plants: *Genlisea aurea* at 43.3 Mb and *Cephalotus follicularis* with 1.6 Gb (non-carnivorous plants ranged from 119.7 Mb to 1.5 Gb). Similar results were found for number of genes encoded, ranging from 17,685 in *G. aurea* to 89,073 in *Drosera capensis* (typical plants: 28,382 to 70,250). The largest number of unique GO codes identified was found in *Arabidopsis thaliana*; however, this results from the utilization of *A. thaliana* in the development of plant GO codes. The smallest number was found in *Oryza sativa* (1262), with the largest (after *A. thaliana*) found in *C. follicularis* (4664). Interestingly, when testing for relationships between these factors, no significant ( $\alpha = 0.05$ ) associations were found between genome size and gene number ( $p = 0.857$ ,



**Figure 4** Chart of proportional representation of carnivorous functions vs. overall gene functions in all taxa sampled. Pie-charts above indicate total proportion of all carnivorous functions combined (red & percentage) vs. all other genes for which at least one function could be identified (blue). Stacked bars below indicate the proportion ascribed to each carnivory-associated function within the total, sorted from (on average) most represented (bottom) to least represented (top). The final bar, “Other”, combines the rarest nine functions, which each on average represent only 0.7% of the carnivory-associated functions detected. A complete numerical view of this data is available in [Table S2](#).

Full-size DOI: [10.7717/peerj.4322/fig-4](https://doi.org/10.7717/peerj.4322/fig-4)

$R^2 = 0.1202$ ), genome size and number of unique GOs ( $p = 0.630$   $R^2 = 0.0909$ ), or gene number and number of unique GOs ( $p = 0.901$ ,  $R^2 = 0.1227$ ).

When comparing proportion of functionally identifiable genes that could be mapped to a carnivory associated function, there was little difference between carnivorous and non-carnivorous taxa. The percentage of genes mapping to a carnivory associated function in carnivorous taxa ranged from 3.1% to 5.0% of all function-assigned genes; in typical plants, this value ranged from 2.4% to 4.3%. In terms of which specific carnivory associated functions made up each plant’s proportion, the representation of each function varied wildly from taxon to taxon (Fig. 4; Table S3).

Statistical comparisons of the genomic representation of each carnivory associated function in carnivorous vs. typical plants yielded two significant ( $\alpha = 0.05$  results: “Alternative oxidase activity” ( $t = 3.14$ ,  $p = 0.011$ ,  $q = 0.047$ ) and “ATP:ADP antiporter activity” ( $t = 4.00$ ,  $p = 4.30E-03$ ,  $q = 0.037$ ). A third function, “phospholipase activity” ( $t = 2.79$ ,  $p = 0.019$ ,  $q = 0.053$ ), was detected as significant before correction, but retained only marginal significance ( $\alpha = 0.10$  after accounting for multiple tests. Detailed results of these tests are presented in Table 3. For each test, statistical power reaches 50% ( $\beta = 0.50$  at an effect size of 1.06 standard deviations and 95% ( $\beta = 0.05$  at an effect size of 2.12 standard deviations ( $\alpha = 0.05$ ).

**Table 3** Results of statistical analyses comparing non-carnivorous plants to carnivorous plants for each of 24 carnivory-associated functions, plus the total of all functions. “*t*” indicates the test statistic of an upper-tailed Student’s *t*-test. “*p*” indicates the *p*-value of this test. “*q*” indicates a corrected *p*-value accounting for multiple comparisons, using Storey’s correction. Significance (“Sig.”) is indicated by bolding and with “\*” for  $q < 0.05$ , “\*\*” for  $q < 0.01$ , and “\*\*\*” for  $q < 0.001$ . A non-bolded “.” indicates marginal values ( $q < 0.10$ ), while “NS” indicates non-significance ( $q > 0.10$ ).

	<i>Z</i>	<i>p</i>	<i>q</i>	Sig.
Actin	0.24	0.407	0.218	NS
AltOx	<b>3.14</b>	<b>0.011</b>	<b>0.047</b>	*
AspPep	0.01	0.496	0.241	NS
ATP	−0.24	0.590	0.241	NS
ATP_ADP	<b>4.00</b>	<b>4.30E−03</b>	<b>0.037</b>	*
BGal	1.90	0.062	0.127	NS
Chit	−1.82	0.944	0.324	NS
CinAlc	0.39	0.355	0.218	NS
CystPep	−0.32	0.619	0.241	NS
FrucBPA	0.66	0.266	0.217	NS
GlutTrans	0.29	0.391	0.218	NS
H2OChan	1.68	0.074	0.127	NS
HeatShock	0.32	0.377	0.218	NS
Lipase	0.53	0.309	0.218	NS
LipTrans	0.94	0.193	0.217	NS
NHTrans	0.64	0.278	0.217	NS
Perox	−0.14	0.552	0.241	NS
Phoslip	2.79	0.019	0.053	.
Phosp	0.77	0.240	0.217	NS
Polygal	−0.75	0.763	0.284	NS
ProtHomo	1.27	0.122	0.174	NS
RiboNuc	−1.10	0.841	0.300	NS
SerCarPep	−0.29	0.608	0.241	NS
ThioGluc	−0.18	0.570	0.241	NS
Total	0.62	0.278	0.217	NS

Testing of individual carnivorous taxa yielded a total of 13 significant ( $\alpha = 0.05$ ) results and an additional five marginal ( $\alpha = 0.10$ ) results, out of 100 total tests (4 species  $\times$  25 distributions). *Genlisea aurea* and *Drosera capensis* had very few functions that showed a signal of genomic overrepresentation. In *Genlisea aurea*, only a single function, “phospholipase activity” ( $Z = 2.76$ ,  $p = 2.89\text{E}−03$ ,  $q = 0.054$ ) result reached marginal significance. *Drosera capensis* had one significant function: “alternative oxidase activity” ( $Z = 3.72$ ,  $p = 1.01\text{E}−04$ ,  $q = 2.45\text{E}−03$ ). *Utricularia gibba* and *Cephalotus follicularis* were found to have a substantial portion of carnivory-associated functions showing strong signals of genomic overrepresentation. In *U. gibba*, five functions reached statistical significance: “alternative oxidase activity” ( $Z = 2.36$ ,  $p = 9.17\text{E}−03$ ,  $q = 0.025$ ), “ammonium transmembrane transport” ( $Z = 3.58$ ,  $p = 1.74\text{E}−04$ ,  $q = 2.09\text{E}−03$ ),

“ATPase activity” ( $Z = 3.19, p = 7.19E - 04, q = 4.31E - 03$ ), “cysteine-type peptidase activity” ( $Z = 2.00, p = 0.023, q = 0.046$ ), “phosphatase activity” ( $Z = 2.65, p = 4.05E - 03, q = 0.016$ ), and “phospholipase activity” ( $Z = 2.30, p = 0.011, q = 0.025$ ). An additional three test results were marginally significant: “aspartic-type peptidase activity” ( $Z = 1.75, p = 0.040, q = 0.060$ ), “ATP:ADP antiporter activity” ( $Z = 1.54, p = 0.062, q = 0.083$ ), and total proportion of carnivory-associated functions ( $Z = 1.79, p = 0.036, q = 0.060$ ). In *C. follicularis*, seven functions reached significance: “alternative oxidase activity” ( $Z = 2.36, p = 9.10E - 03, q = 0.030$ ), “beta-galactosidase activity” ( $Z = 4.19, p = 1.40E - 05, q = 1.99E - 04$ ), “glutathione transferase activity” ( $Z = 2.22, p = 0.13, q = 0.31$ ), “lipase activity” ( $Z = 2.14, p = 0.016, q = 0.033$ ), “lipid transport” ( $Z = 2.31, p = 0.010, q = 0.030$ ), “phospholipase activity” ( $Z = 3.50, p = 2.28E - 04, q = 0.002$ ), and “water channel activity” ( $Z = 3.08, p = 1.04E - 03, q = 4.96E - 03$ ). One additional function, “ATP:ADP antiporter activity” ( $Z = 1.91, p = 0.028, q = 0.050$ ), was marginally significant. Detailed results of these tests are presented in [Table 4](#). For each test, statistical power reaches 50% ( $\beta = 0.50$  at an effect size of 2.62 standard deviations and 95% ( $\beta = 0.05$  at an effect size of 4.94 standard deviations ( $\alpha = 0.05$ ).

Some changes in results of the above analyses were observed when testing with the raw data sets. In analysis 1 ([Table S4](#)), a *t*-test comparison of carnivorous vs. non-carnivorous taxa as groups, *beta-galactosidase activity*, *phosphatase activity*, *protein homodimerization*, *thioglucosidase activity*, and *water channel activity* were noted as marginally significant when using uncorrected data; these values dropped below marginal significance ( $q < 0.10$ ) when using corrected data. *Phospholipase activity* was identified as significant ( $q < 0.05$ ) from uncorrected data, but decreased to marginal significance after correction. In analysis 2 ([Table S5](#)), changes were as follows: *Genlisea aurea*: no changes. *Drosera capensis*: *ATP:ADP antiporter activity*, *phospholipase activity*, and *thioglucosidase activity* declined from significant ( $q < 0.05$ ) to NS ( $q > 0.10$ ), while *cysteine-type peptidase activity* declined from marginal to NS. *Utricularia gibba*: *ammonium transmembrane transport activity* and *ATPase activity* increased from NS to \*\* ( $q < 0.01$ ), *cysteine-type peptidase activity*, and *phospholipase activity* increased from NS to significant, and *aspartic-type peptidase activity* and total carnivorous function increased from NS to marginal; however, *phosphatase activity* declined from \*\* to significant, and *cinnamyl-alcohol dehydrogenase activity*, *polygalactosidase activity*, and *protein homodimerization activity* declined from significant to NS. *Cephalotus follicularis*: *beta-galactosidase activity* increased from NS to \*\*\* ( $q < 0.001$ ), *phospholipase activity* and *water channel activity* increased from NS to \*\*, *glutathione transferase activity* increase from marginal to significant, and *lipase activity* and *lipid transferase activity* increased from NS to significant; *heat shock protein activity* decreased from \*\*\*\* ( $q < 0.0001$ ) to NS, *ATP:ADP antiporter activity* declined from \*\* to marginal, *ATPase activity* and *protein homodimerization activity* decreased from \*\* to NS, *polygalactosidase activity* declined from significant to NS, and *fructose bisphosphate aldolase activity* declined from marginal to NS.

In total across all tests, 81% of results remained unchanged in designation ([Table 5](#)). For those that did change, a decrease in significance was more common (10%) than an

**Table 4** Results of statistical analyses comparing non-carnivorous plants to carnivorous plants in four sets, with each evaluating 24 carnivory-associated functions, plus the total of all functions. “Z” indicates the test-statistic of an upper-tailed Z-test (equal to number of standard deviations from the mean). “p” indicates the p-value of this test. “q” indicates a corrected p-value accounting for multiple comparisons, using Storey’s correction. Significance (“Sig.”) is indicated by bolding and with “\*” for  $q < 0.05$ , “\*\*” for  $q < 0.01$ , and “\*\*\*” for  $q < 0.001$ . A non-bolded “.” indicates marginal values ( $q < 0.10$ ), while “NS” indicates non-significance ( $q > 0.10$ ).

	<i>Genlisea aurea</i>				<i>Drosera capensis</i>				<i>Utricularia gibba</i>				<i>Cephalotus follicularis</i>			
	Z	p	q	Sig.	Z	p	q	Sig.	Z	p	q	Sig.	Z	p	q	Sig.
Actin	0.25	0.403	0.626	NS	-0.69	0.755	0.861	NS	-0.06	0.525	0.351	NS	1.04	0.150	0.214	NS
AltOx	0.75	0.228	0.416	NS	<b>3.72</b>	<b>1.01E-04</b>	<b>2.45E-03</b>	**	<b>2.36</b>	<b>9.17E-03</b>	<b>0.025</b>	*	<b>2.36</b>	<b>9.10E-03</b>	<b>0.030</b>	*
AspPep	-0.74	0.771	0.674	NS	0.20	0.421	0.861	NS	1.75	0.040	0.060	.	-1.17	0.880	0.544	NS
ATP	-1.50	0.933	0.697	NS	-1.22	0.889	0.861	NS	<b>3.19</b>	<b>7.19E-04</b>	<b>4.31E-03</b>	**	-1.67	0.952	0.544	NS
ATP_ADP	1.52	0.064	0.238	NS	1.71	0.043	0.523	NS	1.54	0.062	0.083	.	1.91	0.028	0.050	.
BGal	1.92	0.028	0.172	NS	0.55	0.291	0.861	NS	0.55	0.291	0.296	NS	<b>4.19</b>	<b>1.40E-05</b>	<b>1.99E-04</b>	***
Chit	-0.35	0.637	0.674	NS	-1.19	0.884	0.861	NS	-0.70	0.757	0.392	NS	-1.03	0.847	0.544	NS
CinAlc	1.22	0.111	0.345	NS	-0.39	0.650	0.861	NS	0.31	0.379	0.311	NS	-0.29	0.616	0.482	NS
CystPep	-1.15	0.876	0.697	NS	-0.55	0.708	0.861	NS	<b>2.00</b>	<b>0.023</b>	<b>0.046</b>	*	-1.43	0.923	0.544	NS
FrucBPA	1.56	0.059	0.238	NS	-0.64	0.739	0.861	NS	0.75	0.227	0.273	NS	-0.02	0.508	0.454	NS
GlutTrans	-0.19	0.577	0.674	NS	-0.20	0.578	0.861	NS	-0.90	0.817	0.392	NS	<b>2.22</b>	<b>0.013</b>	<b>0.031</b>	*
H2OChan	0.74	0.229	0.416	NS	0.65	0.259	0.861	NS	0.48	0.314	0.296	NS	<b>3.08</b>	<b>1.04E-03</b>	<b>4.96E-03</b>	**
HeatShock	0.69	0.244	0.416	NS	-0.74	0.771	0.861	NS	-0.07	0.527	0.351	NS	0.83	0.204	0.224	NS
Lipase	-0.26	0.602	0.674	NS	-0.02	0.508	0.861	NS	-0.35	0.637	0.376	NS	<b>2.14</b>	<b>0.016</b>	<b>0.033</b>	*
LipTrans	0.69	0.245	0.416	NS	0.41	0.340	0.861	NS	-0.65	0.741	0.392	NS	<b>2.31</b>	<b>0.010</b>	<b>0.030</b>	*
NHTrans	-0.82	0.794	0.674	NS	0.98	0.163	0.861	NS	<b>3.58</b>	<b>1.74E-04</b>	<b>2.09E-03</b>	**	-0.86	0.806	0.544	NS
Perox	-0.59	0.722	0.674	NS	-0.24	0.596	0.861	NS	0.00	0.499	0.351	NS	0.57	0.284	0.270	NS
Phoslip	2.76	2.89E-03	0.054	.	0.31	0.379	0.861	NS	<b>2.30</b>	<b>0.011</b>	<b>0.025</b>	*	<b>3.50</b>	<b>2.28E-04</b>	<b>0.002</b>	**
Phosp	-1.35	0.912	0.697	NS	0.69	0.244	0.861	NS	<b>2.65</b>	<b>4.05E-03</b>	<b>0.016</b>	*	0.83	0.203	0.224	NS
Polygal	-0.46	0.678	0.674	NS	-1.13	0.870	0.861	NS	0.47	0.320	0.296	NS	-0.45	0.674	0.482	NS
ProtHomo	2.09	0.018	0.169	NS	0.11	0.458	0.861	NS	0.28	0.388	0.311	NS	0.62	0.269	0.270	NS
RiboNuc	-0.62	0.734	0.674	NS	-0.42	0.661	0.861	NS	-0.34	0.635	0.376	NS	-0.43	0.668	0.482	NS
SerCarPep	-0.32	0.626	0.674	NS	-0.92	0.821	0.861	NS	-0.87	0.808	0.392	NS	1.35	0.089	0.142	NS
ThioGluc	0.85	0.198	0.416	NS	-0.41	0.658	0.861	NS	-0.41	0.658	0.376	NS	-0.41	0.658	0.482	NS
Total	-0.38	0.649	0.674	NS	-0.56	0.711	0.861	NS	1.79	0.036	0.060	.	0.86	0.195	0.224	NS



**Table 5** Effects of data adjustment on statistical significance detected in results. Change was measured in significance levels, considering six levels:  $q > 0.10$  (NS),  $q < 0.10$  (.),  $q < 0.05$  (\*),  $q < 0.01$  (\*\*),  $q < 0.001$  (\*\*\*),  $q < 0.0001$  (\*\*\*\*). “Increase” shows cases where a result went up one or more significance levels; “Decrease” shows cases where a result went down one or more significance levels; “Change > 1” shows cases where a result went either up or down two or more significance levels. “Class” indicates the results based off the categorical correction seen in Table S4 vs. main text Table 3. “Individual” indicates the total of individual comparison results as shown by Table S5 vs. main text Table 4; species names show these comparisons for each species considered separately. “Overall” shows the total of all tests.

	No change	Increase	Decrease	Change > 1
Class	19 (76%)	0 (0%)	6 (24%)	0 (0%)
Individual	83 (83%)	10 (10%)	5 (5%)	9 (9%)
<i>C. follicularis</i>	17 (68%)	6 (24%)	2 (8%)	6 (24%)
<i>D. capensis</i>	21 (80%)	0 (0%)	4 (16%)	2 (8%)
<i>G. aurea</i>	25 (100%)	0 (0%)	0 (0%)	0 (0%)
<i>U. gibba</i>	20 (80%)	4 (16%)	0 (0%)	1 (4%)
Overall	102 (82%)	10 (8%)	12 (10%)	9 (7%)

increase (8%). Less than half of all changes (7% of total tests) were of more than a single significance level. Thus, the analyses presented in the main text are performed using the adjusted data.

## DISCUSSION

The analyses presented here were designed to identify similarities in function among carnivorous plants, and we found mixed support for our hypotheses. The null hypothesis (“ $H_0$ : Carnivorous plant genomes are not distinct from typical plants in functional terms”) cannot be rejected for 11 of the 24 functions tested. The first alternate hypothesis (“ $H_1$ : All carnivorous plants contain a shared functional signal as a result of convergence”) is given some support by the results of statistical comparisons between carnivorous and typical plants overall, as it does appear that alternative oxidase activity and ATP:ADP antiporter activity (as well as, potentially, phospholipase activity) may be commonly overrepresented in carnivorous taxa. Our results support the other alternative hypothesis (“ $H_2$ : Carnivorous plants are distinct in gene function from typical plants, but this difference varies from taxon to taxon”), as seen in nine (and one additional, marginally) of the 24 functions tested. In short, only a small number of functions appear to be consistently over-represented in taxa sharing the syndrome of plant carnivory; others, while from a predictable set, are over-represented on a taxon-to-taxon basis but in an unpredictable manner. A majority of functions, even if involved in the functional syndrome described, will likely not show a detectable signal, either due to high levels of variation within the control group or because other methods of up-regulation (transcriptional, translational, or structural) have been employed. In any case, our study suggests that plant carnivory can evolve using multiple independent metabolic pathways.

### Overall effects

This study sought to detect a signal of genomic overrepresentation of functions researchers had previously determined were associated with carnivory in plants. The two functions

consistently identified as significantly overrepresented were “alternative oxidase activity” and “ATP:ADP anti-porter activity”. Alternative oxidase functions primarily in the mitochondria, as part of the electron transport chain. It is believed to function as a “protective” enzyme, to prevent over-oxidation in the mitochondria and can be activated in response to oxidative stress (Day & Wiskich, 1995). For this function to be of common importance to carnivorous taxa, there are three possible explanations: (i) carnivorous plants, due to their digestive function, produce larger amounts of reactive oxygen species (consistent with Chia et al., 2004), requiring more alternative oxidase to counteract their negative effects; (ii) alternative oxidase is encoded in a modified form, having been co-opted to perform a different function outside the mitochondrion; or (iii) alternative oxidase is functioning as it would typically, but due to the similar habitat parameters of carnivorous plants, they require its effects more frequently. ATP:ADP anti-porter activity has two functions: It is involved in the maintenance of cellular electrical potential (due to an H<sup>+</sup> gradient) in the presence of free fatty acids (Vianello, Petrusa & Macrì, 1994) and it allows exchange of cellular ATP for plastid or bacterial-symbiont ADP (Greub & Raoult, 2003). In the first case, it may be responsible for interacting with the cellular proton gradient if pH changes substantially during digestion; in the second, it may provide aid to the symbiotic bacteria that assist carnivorous plants in digestion. A third function, “phospholipase activity”, was marginally significant. Phospholipases are involved in signaling interactions as well as in metabolism of fatty acids and in degrading cell membranes (Chapman, 1998). Carnivorous plants may possess an increased need for complex signaling pathways to regulate their digestive machinery, as well as a clear need to break down cell membranes to access the contents of insect cells.

### Individual taxa

In individual analyses of each carnivorous taxon, alternative oxidase was found to be significant in three species and phospholipase in two species (plus one marginal). Interestingly, ATP:ADP anti-porter activity overall signal was driven by marginal results in two taxa. *Genlisea aurea* and *Drosera capensis* had no significant or marginal functions outside of this set (with one each). In stark contrast, *Utricularia gibba* and *Cephalotus follicularis* both had large numbers of significantly overrepresented carnivory associated functions. Other than alternative oxidase (significant in both), phospholipase (significant in both), and ATP:ADP anti-porter activity (marginal in both), the two taxa did not overlap in any of their other nine (combined) over-represented functions.

*Utricularia gibba* uniquely possessed overrepresentation in *ATPase activity*, *cysteine-type peptidase activity*, *ammonium transmembrane transport*, *phosphatase activity*, and *aspartic-type endopeptidase activity*. Phosphatase, aspartic peptidase, and cysteine peptidase, as catabolic enzymes found localized to the digestive fluids of other carnivorous taxa (Schulze et al., 2012; Rottloff et al., 2016), most likely have roles in direct digestive function. *Ammonium transmembrane transport*, while required in some amount by all plants, may be more vital for *Utricularia*, which must extract the concentrated nitrogenous products of digestion from an aquatic environment. ATPase in plants is involved in regulation of endocytotic and secretory processes (Dettmer et al., 2006), which would logically be

involved in both the release of digestive enzymes and the absorption of digested material. *Utricularia gibba* was the only taxon studied that had even marginal significance in the total genomic proportion of carnivorous functions. Also of note is the vast difference in portion of carnivory-associated functions between *U. gibba* and its close relative *Genlisea aurea*. While both taxa have characteristically-reduced genomes, *G. aurea* has approximately half the genome size and gene number of *U. gibba* (Table 2). It may be that in *Genlisea*, selective pressure strongly favored deletion of duplicated genes, with up-regulation or modification instead occurring at the transcriptional or translational stage.

In *Cephalotus follicularis*, *beta-galactosidase activity*, *water channel activity*, *glutathione transferase activity*, *lipase activity*, and *lipid transferase activity* were found to be uniquely overrepresented. Lipase and beta-galactosidase (which breaks polysaccharide bonds) are likely to have direct involvement in digestion, having also been found in the digestive fluids of other carnivorous taxa (Schulze et al., 2012; Rottloff et al., 2016); lipid transferase would logically accompany lipase, either to localize lipid substrates or to move the products of their decomposition. As *C. follicularis* must transfer water to the interior of its pitchers for digestive functions to be possible at all, high levels of *water channel activity* is also a logical finding.

### Non-significant functions

Conversely, 11 functions (*actin*, *chitinase activity*, *cinnamyl-alcohol dehydrogenase activity*, *fructose biphosphate aldolase activity*, *heat shock protein activity*, *peroxidase activity*, *polygalactonuronase activity*, *protein homodimerization activity*, *ribonuclease activity*, *serine-type carboxypeptidase activity*, and *thioglucoisidase activity*) showed no significant overrepresentation in any taxa sampled. However, due to the relatively low statistical power to detect low to moderate effect sizes with the tests performed, it is possible that these effects do exist but cannot be detected. Even if accepting these negative results as accurate, it is possible that these functions are preferentially utilized in other ways, such as increased transcription, increased protein translation, or increased protein efficiency due to changes in amino acid sequence. Any of these scenarios may also explain why certain functions are overrepresented in the genomes of some carnivorous taxa but not in others.

## CONCLUSIONS

The findings of this study are consistent with expectations of evolutionary convergence. As distant taxa converge on a similar phenotype, predictable functional convergence occurs. This was seen in the cases where there predicted functions, gathered from past studies of carnivorous taxa, were determined to be significantly overrepresented in the taxa sampled. However, this effect was not seen in all functions predicted, nor were the functions showing significant overrepresentation consistent across all four taxa. It is likely that, while these taxa may often show strong signal in some of the functions predicted, the number of potential avenues by which to reach the same practical result is too great for any prediction to hold true in all cases.

The degree of molecular specificity required to meet an organism's needs can also be expected to play a role, with ability to predict a specific functional set increasing

proportional to specificity of the convergent syndrome. In carnivorous plants, a wide range of morphologies (as evidenced by the taxa included in this study) have arisen to reach the same end. In other cases, there is little flexibility in how an organism can reach the needed outcome. For example, organisms that rely on the mimicry of pheromones, such as orchids that imitate bee sex and alarm pheromones, are far less likely to show variation in the functions required for the end-result (Stökl *et al.*, 2005; Stökl *et al.*, 2007; Brodmann *et al.*, 2009). Conversely, even broadly-defined, frequently re-derived evolutionary syndromes may still show repeated selection for specific functional codes. It has been shown that organisms experience substantial convergence of microbiome even for classes as broad as “carnivore” vs. “herbivore” (Muegge *et al.*, 2011); it is reasonable to consider that this occurrence may be accompanied by host genome functional convergence as well. However, to detect a signal in these broader groups, where it may be difficult to assemble a manageable list of target syndrome-associated functions, much more thorough sampling would likely be required.

### **Future directions**

This study is currently limited primarily by the lack of available genomic sequence data for carnivorous taxa, as well as the lack of thorough Gene Ontology annotation of plant taxa in general. This study’s BLAST-based annotation methodology is currently impractical for substantially larger taxon sampling, and even in limited taxon sets, greater accuracy is desirable. As more annotated genomes, more consistently high-quality genome assemblies, and more accompanying transcriptomic data sets on which to train gene prediction models become available, it will be possible to more thoroughly assess this phenomenon. As more carnivorous plant taxa are sequenced and annotated (*Nepenthes* and *Dionaea* are expected, as well as *Sarracenia* by the authors), it also becomes possible to refine the reference GO set created for this study, e.g., using functions implicated in previous studies in at least three of 10 taxa. Another potential approach is to apply similar methods to a different functional syndrome. While results may differ based on the evolutionary idiosyncrasies of groups of organisms or from one specific syndrome to another, the same methods could be employed.

### **ACKNOWLEDGEMENTS**

We thank the members of the Carstens Lab for suggestions and feedback on the methods and presentation of this study. We also thank Abbie Zimmer, who created original illustrations for this study’s four carnivorous plant taxa (Fig. 1). Finally, we thank the editor and reviewers for their highly constructive feedback.

## ADDITIONAL INFORMATION AND DECLARATIONS

### Funding

Gregory L. Wheeler's doctoral studies are supported by a Distinguished University Fellowship, awarded by The Ohio State University Graduate School. Computational resources were provided by the Ohio Supercomputer Center (project PAS1172). The funders had no role in study design, data collection and analysis, decision to publish, or preparation of the manuscript.

### Grant Disclosures

The following grant information was disclosed by the authors:

The Ohio State University Graduate School.

Ohio Supercomputer Center: PAS1172.

### Competing Interests

The authors declare there are no competing interests.

### Author Contributions

- Gregory L. Wheeler conceived and designed the experiments, performed the experiments, analyzed the data, wrote the paper, prepared figures and/or tables, reviewed drafts of the paper.
- Bryan C. Carstens conceived and designed the experiments, contributed reagents/materials/analysis tools, wrote the paper, reviewed drafts of the paper.

### Data Availability

The following information was supplied regarding data availability:

Data and scripts used in this study (included in the [Supplemental Files](#)) are also available on GitHub: <https://github.com/GWheelerEB/PlantCarnivoryPub-Scripts>.

### Supplemental Information

Supplemental information for this article can be found online at <http://dx.doi.org/10.7717/peerj.4322#supplemental-information>.

## REFERENCES

- Adamec L. 2002.** Leaf absorption of mineral nutrients in carnivorous plants stimulates root nutrient uptake. *New Phytologist* **155**:89–100  
[DOI 10.1046/j.1469-8137.2002.00441.x](https://doi.org/10.1046/j.1469-8137.2002.00441.x).
- Adams KL, Wendel JF. 2005.** Polyploidy and genome evolution in plants. *Current Opinion in Plant Biology* **8**:135–141 [DOI 10.1016/J.PBI.2005.01.001](https://doi.org/10.1016/J.PBI.2005.01.001).
- Ahn WS, Kim K-W, Bae SM, Yoon JH, Lee JM, Namkoong SE, Kim JH, Kim CK, Lee YJ, Kim Y-W. 2003.** Targeted cellular process profiling approach for uterine leiomyoma using cDNA microarray, proteomics and gene ontology analysis. *International Journal of Experimental Pathology* **84**:267–279 [DOI 10.1111/J.0959-9673.2003.00362.X](https://doi.org/10.1111/J.0959-9673.2003.00362.X).

- Altenhoff AM, Studer RA, Robinson-Rechavi M, Dessimoz C. 2012.** Resolving the ortholog conjecture: orthologs tend to be weakly, but significantly, more similar in function than paralogs. *PLoS Computational Biology* **8**:e1002514 DOI [10.1371/journal.pcbi.1002514](https://doi.org/10.1371/journal.pcbi.1002514).
- An CI, Fukusaki EI, Kobayashi A. 2002.** Aspartic proteinases are expressed in pitchers of the carnivorous plant *Nepenthes alata* Blanco. *Planta* **214**:661–667 DOI [10.1007/s004250100665](https://doi.org/10.1007/s004250100665).
- Anderson B, Midgley JJ. 2003.** Digestive mutualism, an alternate pathway in plant carnivory. *Oikos* **102**:221–224 DOI [10.1034/j.1600-0706.2003.12478.x](https://doi.org/10.1034/j.1600-0706.2003.12478.x).
- Ashburner M, Ball CA, Blake JA, Botstein D, Butler H, Cherry JM, Davis AP, Dolinski K, Dwight SS, Eppig JT, Harris MA, Hill DP, Issel-Tarver L, Kasarskis A, Lewis S, Matese JC, Richardson JE, Ringwald M, Rubin GM, Sherlock G. 2000.** Gene Ontology: tool for the unification of biology. *Nature Genetics* **25**:25–29 DOI [10.1038/75556](https://doi.org/10.1038/75556).
- Balsa-Canto E, Henriques D, Gabor A, Banga JR. 2016.** AMIGO2, a toolbox for dynamic modeling, optimization and control in systems biology. *Bioinformatics* **32**:3357–3359 DOI [10.1093/bioinformatics/btw411](https://doi.org/10.1093/bioinformatics/btw411).
- Blanc G, Wolfe KH. 2004.** Functional divergence of duplicated genes formed by polyploidy during arabidopsis evolution. *The Plant Cell Online* **16**:1679–1691 DOI [10.1105/tpc.021410](https://doi.org/10.1105/tpc.021410).
- Bloom AJ, Chapin SF, Mooney HA. 1985.** Resource limitation in plants—an economic analogy. *Annual Review of Ecology and Systematics* **16**:363–392 DOI [10.1146/annurev.ecolsys.16.1.363](https://doi.org/10.1146/annurev.ecolsys.16.1.363).
- Böhm J, Scherzer S, Krol E, Kreuzer I, Von Meyer K, Lorey C, Mueller TD, Shabala L, Monte I, Solano R, Al-Rasheid KAS, Rennenberg H, Shabala S, Neher E, Hedrich R. 2016.** The venus flytrap *Dionaea muscipula* counts prey-induced action potentials to induce sodium uptake. *Current Biology* **26**:286–295 DOI [10.1016/j.cub.2015.11.057](https://doi.org/10.1016/j.cub.2015.11.057).
- Bork P, Sander C, Valencia A. 1993.** Convergent evolution of similar enzymatic function on different protein folds: the hexokinase, ribokinase, and galactokinase families of sugar kinases. *Protein Science* **2**:31–40 DOI [10.1002/pro.5560020104](https://doi.org/10.1002/pro.5560020104).
- Brodmann J, Twele R, Francke W, Yi-bo L, Xi-qiang S, Ayasse M. 2009.** Orchid mimics honey bee alarm pheromone in order to attract hornets for pollination. *Current Biology* **19**:1368–1372 DOI [10.1016/j.cub.2009.06.067](https://doi.org/10.1016/j.cub.2009.06.067).
- Butts CT, Bierma JC, Martin RW. 2016.** Novel proteases from the genome of the carnivorous plant *Drosera capensis*: structural prediction and comparative analysis. *Proteins: Structure, Function and Bioinformatics* **84**:1517–1533 DOI [10.1002/prot.25095](https://doi.org/10.1002/prot.25095).
- Caravieri FA, Ferreira AJ, Ferreira A, Clivati D, De Miranda VFO, Araújo WL. 2014.** Bacterial community associated with traps of the carnivorous plants *Utricularia hydrocarpa* and *Genlisea filiformis*. *Aquatic Botany* **116**:8–12 DOI [10.1016/j.aquabot.2013.12.008](https://doi.org/10.1016/j.aquabot.2013.12.008).
- Chapman KD. 1998.** Phospholipase activity during plant growth and development and in response to environmental stress. *Trends in Plant Science* **3**:419–426 DOI [10.1016/S1360-1385\(98\)01326-0](https://doi.org/10.1016/S1360-1385(98)01326-0).

- Chia TF, Aung HH, Osipov AN, Goh NK, Chia LS. 2004. Carnivorous pitcher plant uses free radicals in the digestion of prey. *Redox Report* 9:255–261 DOI 10.1179/135100004225006029.
- Conesa A, Götz S, García-Gómez JM, Terol J, Talón M, Robles M. 2005. Blast2GO: a universal annotation and visualization tool in functional genomics research. Application note. *Bioinformatics* 21:3674–3676 DOI 10.1093/bioinformatics/bti610.
- Dabney A, Storey JD, Warnes GR. 2010. Q-value estimation for false discovery rate control. Available at [www.bioconductor.org/packages/release/bioc/html/qvalue.html](http://www.bioconductor.org/packages/release/bioc/html/qvalue.html).
- Darwin C, Darwin F. 1888. *Insectivorous plants*. London: John Murray.
- Day DA, Wiskich JT. 1995. Regulation of alternative oxidase activity in higher plants. *Journal of Bioenergetics and Biomembranes* 27:379–385.
- Dettmer J, Hong-Hermesdorf A, Stierhof Y-D, Schumacher K. 2006. Vacuolar H<sup>+</sup>-ATPase activity is required for endocytic and secretory trafficking in *Arabidopsis*. *The Plant Cell Online* 18:715–730.
- Doolittle RF. 1994. Convergent evolution: the need to be explicit. *Trends in Biochemical Sciences* 19:15–18 DOI 10.1016/0968-0004(94)90167-8.
- Ellison AM. 2006. Nutrient limitation and stoichiometry of carnivorous plants. *Plant Biology* 8(6):740–747 DOI 10.1055/s-2006-923956.
- Ellison AM, Farnsworth EJ. 2005. The cost of carnivory for *Darlingtonia californica* (Sarraceniaceae): evidence from relationships among leaf traits. *American Journal of Botany* 92:1085–1093 DOI 10.3732/ajb.92.7.1085.
- Ellison AM, Gotelli NJ. 2001. Evolutionary ecology of carnivorous plants. *Trends in Ecology and Evolution* 16:623–629 DOI 10.1016/S0169-5347(01)02269-8.
- Ellison AM, Gotelli NJ, Brewer JS, Cochran-Stafira DL, Kneitel JM, Miller TE, Worley AC, Zamora R. 2003. The evolutionary ecology of carnivorous plants. *Advances in Ecological Research* 33:1–74 DOI 10.1016/S0065-2504(03)33009-0.
- Foote AD, Liu Y, Thomas GWC, Vinař T, Alföldi J, Deng J, Dugan S, Van Elk CE, Hunter ME, Joshi V, Khan Z, Kovar C, Lee SL, Lindblad-Toh K, Mancina A, Nielsen R, Qin X, Qu J, Raney BJ, Vijay N, Wolf JBW, Hahn MW, Muzny DM, Worley KC, Gilbert MTP, Gibbs RA. 2015. Convergent evolution of the genomes of marine mammals. *Nature Genetics* 47:272–275 DOI 10.1038/ng.3198.
- Fukushima K, Fang X, Alvarez-Ponce D, Cai H, Carretero-Paulet L, Chen C, Chang T-H, Farr KM, Fujita T, Hiwatashi Y, Hoshi Y, Imai T, Kasahara M, Librado P, Mao L, Mori H, Nishiyama T, Nozawa M, Pálfalvi G, Pollard ST, Rozas J, Sánchez-Gracia A, Sankoff D, Shibata TF, Shigenobu S, Sumikawa N, Uzawa T, Xie M, Zheng C, Pollock DD, Albert VA, Li S, Hasebe M. 2017. Genome of the pitcher plant *Cephalotus* reveals genetic changes associated with carnivory. *Nature Ecology & Evolution* 1:Article 0059 DOI 10.1038/s41559-016-0059.
- Givnish TJ. 2015. New evidence on the origin of carnivorous plants. *Proceedings of the National Academy of Sciences of the United States of America* 112:10–11 DOI 10.1073/pnas.1422278112.

- Givnish TJ, Burkhardt EL, Happel RE, Weintraub JD. 1984.** Carnivory in the bromeliad *Brocchinia reducta*, with a cost/benefit model for the general restriction of carnivorous plants to sunny, moist, nutrient-poor habitats. *The American Naturalist* 124:479–497 DOI 10.1086/284289.
- Greub G, Raoult D. 2003.** History of the ADP/ATP-translocase-encoding gene, a parasitism gene transferred from a Chlamydiales ancestor to plants 1 billion years ago. *Applied and Environmental Microbiology* 69:5530–5535 DOI 10.1128/AEM.69.9.5530-5535.2003.
- Gupta RS. 2000.** The natural evolutionary relationships among prokaryotes. *Critical Reviews in Microbiology* 26:111–131 DOI 10.1080/10408410091154219.
- Hatano N, Hamada T. 2008.** Proteome analysis of pitcher fluid of the carnivorous plant *Nepenthes alata*. *Journal of Proteome Research* 7:809–816 DOI 10.1021/pr700566d.
- Hess S, Frahm J-P, Theisen I. 2005.** Evidence of zoophagy in a second liverwort species, *Pleurozia purpurea*. *The Bryologist* 108:212–218.
- Holmans P, Green EK, Pahwa JS, Ferreira MAR, Purcell SM, Sklar P, Owen MJ, O'Donovan MC, Craddock N. 2009.** Gene ontology analysis of GWA study data sets provides insights into the biology of bipolar disorder. *American Journal of Human Genetics* 85:13–24 DOI 10.1016/j.ajhg.2009.05.011.
- Ibarra-Laclette E, Albert VA, Pérez-Torres CA, Zamudio-Hernández F, Ortega-Estrada M de J, Herrera-Estrella A, Herrera-Estrella L. 2011.** Transcriptomics and molecular evolutionary rate analysis of the bladderwort (*Utricularia*), a carnivorous plant with a minimal genome. *BMC Plant Biology* 11:101 DOI 10.1186/1471-2229-11-101.
- Kim MY, Lee S, Van K, Kim T-H, Jeong S-C, Choi I-Y, Kim D-S, Lee Y-S, Park D, Ma J, Kim W-Y, Kim B-C, Park S, Lee K-A, Kim DH, Kim KH, Shin JH, Jang YE, Kim KD, Liu WX, Chaisan T, Kang YJ, Lee Y-H, Kim K-H, Moon J-K, Schmutz J, Jackson SA, Bhak J, Lee S-H. 2010.** Whole-genome sequencing and intensive analysis of the undomesticated soybean (*Glycine soja* Sieb and Zucc) genome. *Proceedings of the National Academy of Sciences of the United States of America* 107:22032–22037 DOI 10.1073/pnas.1009526107.
- Koopman MM, Fuselier DM, Hird S, Carstens BC. 2010.** The carnivorous pale pitcher plant harbors diverse, distinct, and time-dependent bacterial communities. *Applied and Environmental Microbiology* 76:1851–1860 DOI 10.1128/AEM.02440-09.
- Lan T, Renner T, Ibarra-Laclette E, Farr KM, Chang T-H, Cervantes-Pérez SA, Zheng C, Sankoff D, Tang H, Purbojati RW, Putra A, Drautz-Moses DI, Schuster SC, Herrera-Estrella L, Albert VA. 2017.** Long-read sequencing uncovers the adaptive topography of a carnivorous plant genome. *Proceedings of the National Academy of Sciences of the United States of America* 114:E4435–E4441 DOI 10.1073/pnas.1702072114.
- Leushkin EV, Sutormin RA, Nabieva ER, Penin AA, Kondrashov AS, Logacheva MD. 2013.** The miniature genome of a carnivorous plant *Genlisea aurea* contains a low number of genes and short non-coding sequences. *BMC Genomics* 14:476 DOI 10.1186/1471-2164-14-476.
- Lloyd FE. 1934.** Is *Roridula* a carnivorous plant? *Canadian Journal of Research* 10:780–786.



- Losos JB. 2011.** Convergence, adaptation, and constraint. *Evolution* **65**:1827–1840 DOI [10.2307/41240779](https://doi.org/10.2307/41240779).
- Midgley JJ, Stock WD. 1998.** Natural abundance of d15N confirms insectivorous habit of *Roridula gorgonias*, despite it having no proteolytic enzymes. *Annals of Botany* **82**:387–388 DOI [10.1006/anbo.1998.0684](https://doi.org/10.1006/anbo.1998.0684).
- Mithöfer A. 2011.** Carnivorous pitcher plants: insights in an old topic. *Phytochemistry* **72**:1678–1682 DOI [10.1016/j.phytochem.2010.11.024](https://doi.org/10.1016/j.phytochem.2010.11.024).
- Monson RK. 2003.** Gene duplication, neofunctionalization, and the evolution of C4 photosynthesis. *International Journal of Plant Sciences* **164**:S43–S54 DOI [10.1086/368400](https://doi.org/10.1086/368400).
- Muegge BD, Kuczynski J, Knights D, Clemente JC, González A, Fontana L, Henrissat B, Knight R, Gordon JI. 2011.** Diet drives convergence in gut microbiome functions across mammalian phylogeny and within humans. *Science* **332**:970–974 DOI [10.1126/science.1198719](https://doi.org/10.1126/science.1198719).
- Ohio Supercomputer Center. 1987.** *Ohio supercomputer center*. Columbus: Ohio Supercomputer Center.
- Ohyanagi H. 2006.** The Rice Annotation Project Database (RAP-DB): hub for *Oryza sativa* ssp. *japonica* genome information. *Nucleic Acids Research* **34**:D741–D744 DOI [10.1093/nar/gkj094](https://doi.org/10.1093/nar/gkj094).
- Owen Jr T. 1999.** Pathways for nutrient transport in the pitchers of the carnivorous plant *nepenthes alata*. *Annals of Botany* **84**:459–466 DOI [10.1006/anbo.1998.0944](https://doi.org/10.1006/anbo.1998.0944).
- Palenik B, Haselkorn R. 1992.** Multiple evolutionary origins of prochlorophytes, the chlorophyll b-containing prokaryotes. *Nature* **355**:265–267 DOI [10.1038/355265a0](https://doi.org/10.1038/355265a0).
- Plummer G, Kethley J. 1964.** Foliar absorption of amino acids, peptides, and other nutrients by the pitcher plant, *Sarracenia flava*. *Botanical Gazette* **125**:245–260 DOI [10.1086/336280](https://doi.org/10.1086/336280).
- Primack RB. 1987.** Relationships among flowers, fruits, and seeds. *Annual Review of Ecology, Evolution, and Systematics* **18**:409–430 DOI [10.1146/annurev.es.18.110187.002205](https://doi.org/10.1146/annurev.es.18.110187.002205).
- Pruitt KD, Tatusova T, Maglott DR. 2007.** NCBI reference sequences (RefSeq): a curated non-redundant sequence database of genomes, transcripts and proteins. *Nucleic Acids Research* **35**:D61–D65 DOI [10.1093/nar/gkl842](https://doi.org/10.1093/nar/gkl842).
- Qi X, Li MW, Xie M, Liu X, Ni M, Shao G, Song C, KayYuen Yim A, Tao Y, Wong FL, Isobe S, Wong CF, Wong KS, Xu C, Li C, Wang Y, Guan R, Sun F, Fan G, Xiao Z, Zhou F, Phang TH, Liu X, Tong SW, Chan TF, Yiu SM, Tabata S, Wang J, Xu X, Lam HM. 2014.** Identification of a novel salt tolerance gene in wild soybean by wholegenome sequencing. *Nature Communications* **5**:Article 4340 DOI [10.1038/ncomms5340](https://doi.org/10.1038/ncomms5340).
- Qiu Q, Zhang G, Ma T, Qian W, Wang J, Ye Z, Cao C, Hu Q, Kim J, Larkin DM, Auvil L, Capitanu B, Ma J, Lewin HA, Qian X, Lang Y, Zhou R, Wang L, Wang K, Xia J, Liao S, Pan S, Lu X, Hou H, Wang Y, Zang X, Yin Y, Ma H, Zhang J, Wang Z, Zhang Y, Zhang D, Yonezawa T, Hasegawa M, Zhong Y, Liu W, Zhang Y, Huang Z, Zhang S, Long R, Yang H, Wang J, Lenstra JA, Cooper DN, Wu Y, Wang J, Shi P, Wang J, Liu J. 2012.** The yak genome and adaptation to life at high altitude. *Nature Genetics* **44**:946–949 DOI [10.1038/ng.2343](https://doi.org/10.1038/ng.2343).

- Rambaut A. 2009. FigTree, a graphical viewer of phylogenetic trees. Institute of Evolutionary Biology University of Edinburgh. Available at <http://tree.bio.ed.ac.uk/software/figtree>.
- Reich PB, Wright IJ, Cavender-Bares J, Craine JM, Oleksyn J, Westoby M, Walters MB. 2003. The evolution of plant functional variation: traits, spectra, and strategies. *International Journal of Plant Sciences* 164:S143–S164 DOI 10.1086/374368.
- Renner T, Specht CD. 2012. Molecular and functional evolution of class I chitinases for plant carnivory in the Caryophyllales. *Molecular Biology and Evolution* 29:2971–2985 DOI 10.1093/molbev/mss106.
- Rottloff S, Miguel S, Biseau F, Nisse E, Hammann P, Kuhn L, Chicher J, Bazile V, Gaume L, Mignard B, Hehn A, Bourgaud F. 2016. Proteome analysis of digestive fluids in *Nepenthes* pitchers. *Annals of Botany* 117:479–495 DOI 10.1093/aob/mcw001.
- Sangar V, Blankenberg DJ, Altman N, Lesk AM. 2007. Quantitative sequence-function relationships in proteins based on gene ontology. *BMC Bioinformatics* 8:294 DOI 10.1186/1471-2105-8-294.
- Scamardella JM. 1999. Not plants or animals: a brief history of the origin of kingdoms protozoa, protista and protocista. *International Microbiology* 2:207–216 DOI 10.2436/im.v2i4.9219.
- Scherzer S, Krol E, Kreuzer I, Kruse J, Karl F, Von Rüden M, Escalante-Perez M, Müller T, Rennenberg H, Al-Rasheid KAS, Neher E, Hedrich R. 2013. The *Dionaea muscipula* ammonium channel DmAMT1 provides NH<sub>4</sub><sup>+</sup> uptake associated with Venus flytrap's prey digestion. *Current Biology* 23:1649–1657 DOI 10.1016/j.cub.2013.07.028.
- Schulze WX, Sanggaard KW, Kreuzer I, Knudsen AD, Bemm F, Thøgersen IB, Bräutigam A, Thomsen LR, Schliesky S, Dyrland TF, Escalante-Perez M, Becker D, Schultz J, Karring H, Weber A, Højrup P, Hedrich R, Enghild JJ. 2012. The protein composition of the digestive fluid from the Venus flytrap sheds light on prey digestion mechanisms. *Molecular & Cellular Proteomics* 11:1306–1319 DOI 10.1074/mcp.M112.021006.
- Seibold I, Helbig AJ. 1995. Evolutionary history of New and Old World vultures inferred from nucleotide sequences of the mitochondrial cytochrome b gene. *Philosophical Transactions of the Royal Society of London B* 350:163–178 DOI 10.2307/56332.
- Seth S, Chakravorty D, Dubey VK, Patra S. 2014. An insight into plant lipase research—Challenges encountered. *Protein Expression and Purification* 95:13–21 DOI 10.1016/j.pep.2013.11.006.
- Soltis DE, Albert VA, Leebens-Mack J, Bell CD, Paterson AH, Zheng C, Sankoff D, DePamphilis CW, Wall PK, Soltis PS. 2009. Polyploidy and angiosperm diversification. *American Journal of Botany* 96:336–348 DOI 10.3732/ajb.0800079.
- Soltis DE, Smith SA, Cellinese N, Wurdack KJ, Tank DC, Brockington SF, Refulio-Rodriguez NF, Walker JB, Moore MJ, Carlswald BS, Bell CD, Latvis M, Crawley S, Black C, Diouf D, Xi Z, Rushworth CA, Gitzendanner MA, Sytsma KJ, Qiu Y-L, Hilu KW, Davis CC, Sanderson MJ, Beaman RS, Olmstead RG, Judd WS, Donoghue MJ, Soltis PS. 2011. Angiosperm phylogeny: 17 genes, 640 taxa. *American Journal of Botany* 98:704–730 DOI 10.3732/ajb.1000404.

- Stacey G, Koh S, Granger C, Becker JM. 2002. Peptide transport in plants. *Trends in Plant Science* 7:257–263 DOI 10.1016/S1360-1385(02)02249-5.
- Stökl J, Paulus H, Dafni A, Schulz C, Francke W, Ayasse M. 2005. Pollinator attracting odour signals in sexually deceptive orchids of the *Ophrys fusca* group. *Plant Systematics and Evolution* 254:105–120 DOI 10.1007/s00606-005-0330-8.
- Stökl J, Twele R, Erdmann DH, Francke W, Ayasse M. 2007. Comparison of the flower scent of the sexually deceptive orchid *Ophrys iricolor* and the female sex pheromone of its pollinator *Andrena morio*. *Chemoecology* 17:231–233 DOI 10.1007/s00049-007-0383-y.
- Storey JD. 2003. The positive false discovery rate: a Bayesian interpretation and the  $q$ -value. *Annals of Statistics* 31:2013–2035 DOI 10.1214/aos/1074290335.
- Storey JD, Tibshirani R. 2003. Statistical significance for genomewide studies. *Proceedings of the National Academy of Sciences of the United States of America* 100:9440–9445 DOI 10.1073/PNAS.1530509100.
- Storz JF. 2016. Causes of molecular convergence and parallelism in protein evolution. *Nature Reviews Genetics* 17:239–250 DOI 10.1038/nrg.2016.11.
- Swarbreck D, Wilks C, Lamesch P, Berardini TZ, Garcia-Hernandez M, Foerster H, Li D, Meyer T, Muller R, Ploetz L, Radenbaugh A, Singh S, Swing V, Tissier C, Zhang P, Huala E. 2008. The Arabidopsis Information Resource (TAIR): gene structure and function annotation. *Nucleic Acids Research* 36:D1009–D1014 DOI 10.1093/nar/gkm965.
- Thomas PD, Wood V, Mungall CJ, Lewis SE, Blake JA. 2012. On the use of gene ontology annotations to assess functional similarity among orthologs and paralogs: a short report. *PLOS Computational Biology* 8:e1002386 DOI 10.1371/journal.pcbi.1002386.
- Upadhyay AK, Chacko AR, Gandhimathi A, Ghosh P, Harini K, Joseph AP, Joshi AG, Karpe SD, Kaushik S, Kuravadi N, Lingu CS, Mahita J, Malarini R, Malhotra S, Malini M, Mathew OK, Mutt E, Naika M, Nitish S, Pasha SN, Raghavender US, Rajamani A, Shilpa S, Shingate PN, Singh HR, Sukhwal A, Sunitha MS, Sumathi M, Ramaswamy S, Gowda M, Sowdhamini R. 2015. Genome sequencing of herb Tulsi (*Ocimum tenuiflorum*) unravels key genes behind its strong medicinal properties. *BMC Plant Biology* 15:212 DOI 10.1186/s12870-015-0562-x.
- Vandenbussche M, Theissen G, Van de Peer Y, Gerats T. 2003. Structural diversification and neo-functionalization during floral MADS-box gene evolution by C-terminal frameshift mutations. *Nucleic Acids Research* 31:4401–4409 DOI 10.1093/nar/gkg642.
- Vezi A, Campanaro S, D'Angelo M, Simonato F, Vitulo N, Lauro FM, Cestaro A, Malacrida G, Simionati B, Cannata N, Romualdi C, Bartlett DH, Valle G. 2005. Life at depth: photobacterium profundum genome sequence and expression analysis. *Science* 307:1459–1461 DOI 10.1126/science.1103341.
- Vianello A, Petrusa E, Macri F. 1994. ATP/ADP antiporter is involved in uncoupling of plant mitochondria induced by low concentrations of palmitate. *FEBS Letters* 347:239–242 DOI 10.1016/0014-5793(94)00540-0.

- Wheeler DL, Church DM, Federhen S, Lash AE, Madden TL, Pontius JU, Schuler GD, Schriml LM, Sequeira E, Tatusova TA, Wagner L. 2003.** Database resources of the national center for biotechnology. *Nucleic Acids Research* **31**:28–33 DOI [10.1093/nar/gkg033](https://doi.org/10.1093/nar/gkg033).
- Williams L, Miller A. 2001.** Transporters responsible for the uptake and partitioning of nitrogenous solutes. *Annual Review of Plant Physiology and Plant Molecular Biology* **52**:659–688 DOI [10.1146/annurev.arplant.52.1.659](https://doi.org/10.1146/annurev.arplant.52.1.659).
- Xiao L, Yang G, Zhang L, Yang X, Zhao S, Ji Z, Zhou Q, Hu M, Wang Y, Chen M, Xu Y, Jin H, Xiao X, Hu G, Bao F, Hu Y, Wan P, Li L, Deng X, Kuang T, Xiang C, Zhu J-K, Oliver MJ, He Y. 2015.** The resurrection genome of *Boea hygrometrica*: a blueprint for survival of dehydration. *Proceedings of the National Academy of Sciences of the United States of America* **112**:5833–5837 DOI [10.1073/pnas.1505811112](https://doi.org/10.1073/pnas.1505811112).
- Yang Z, Wafula EK, Honaas LA, Zhang H, Das M, Fernandez-Aparicio M, Huang K, Bandaranayake PCG, Wu B, Der JP, Clarke CR, Ralph PE, Landherr L, Altman NS, Timko MP, Yoder JI, Westwood JH, DePamphilis CW. 2015.** Comparative transcriptome analyses reveal core parasitism genes and suggest gene duplication and repurposing as sources of structural novelty. *Molecular Biology and Evolution* **32**:767–790 DOI [10.1093/molbev/msu343](https://doi.org/10.1093/molbev/msu343).