

---

## Supplementary information

---

# LTP induction by structural rather than enzymatic functions of CaMKII

---

In the format provided by the  
authors and unedited

## SI Guide

### LTP induction by structural rather than enzymatic functions of CaMKII

Jonathan E. Tullis<sup>1\*</sup>, Matthew E. Larsen<sup>1,2\*</sup>, Nicole L. Rumian<sup>1,2</sup>, Ronald K. Freund<sup>1</sup>, Emma E. Boxer<sup>1,2</sup>, Carolyn Nicole Brown<sup>1</sup>, Steven J. Coultrap<sup>1</sup>, Howard Schulman<sup>3</sup>, Jason Aoto<sup>1,2</sup>, Mark L. Dell'Acqua<sup>1,2</sup>, and K. Ulrich Bayer<sup>1,2‡</sup>

#### Author affiliations

<sup>1</sup>Department of Pharmacology, and <sup>2</sup>Program in Neuroscience, University of Colorado Anschutz Medical Campus, Aurora, CO 80045, USA

<sup>3</sup>Department of Neurobiology, Stanford University School of Medicine, Stanford, CA94305, USA

\*These authors contributed equally to this work.

‡Correspondence should be addressed to K. Ulrich Bayer; email:

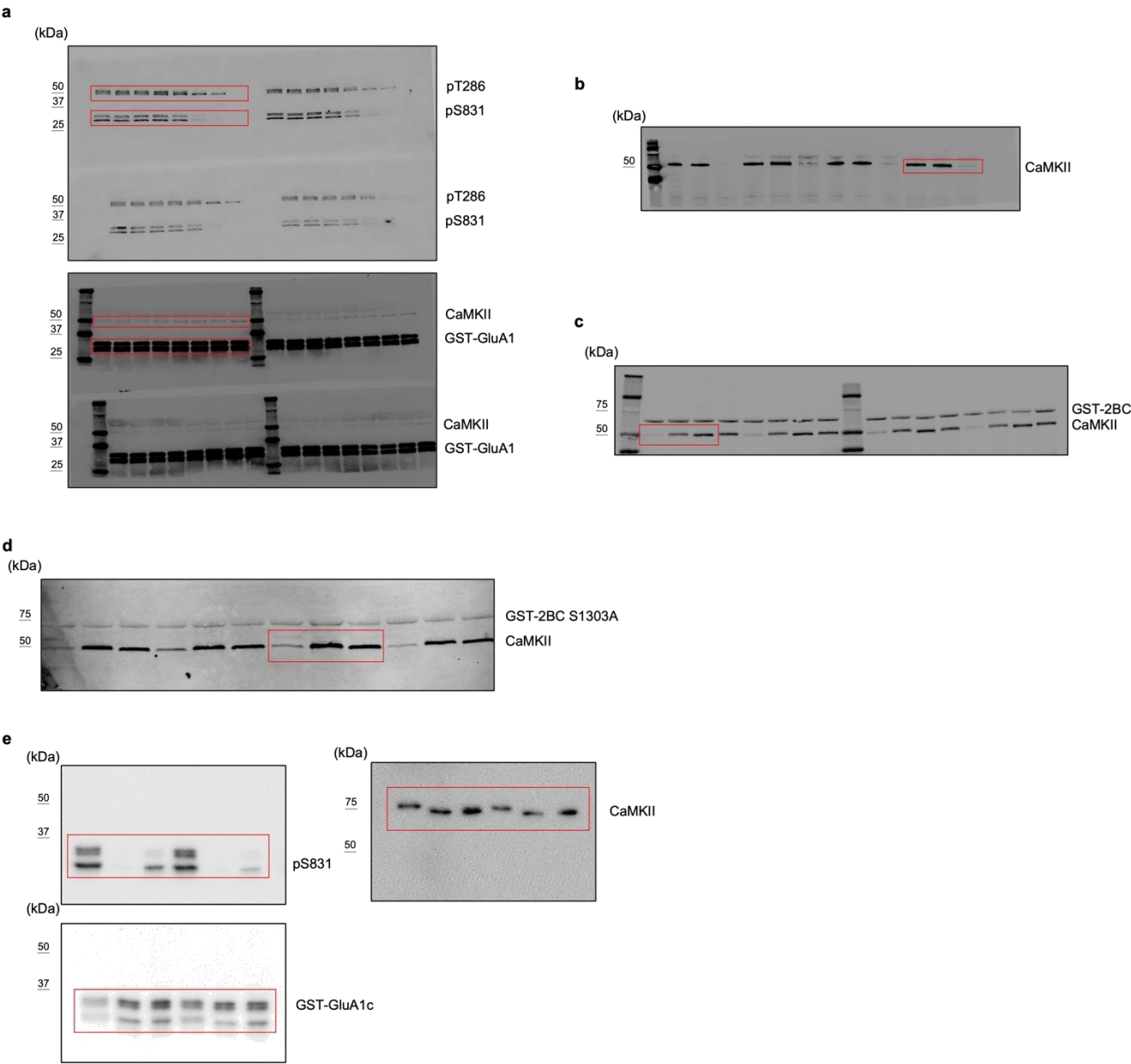
[ulli.bayer@cuanschutz.edu](mailto:ulli.bayer@cuanschutz.edu).

## **Table of contents:**

**SI Figure 1 | Uncropped immunoblots from Main Figures.** Proteins were detected by western blotting, using the indicated antibodies and the red rectangles show the cropping location. **a**, Immunoblots for Fig.2b from in vitro kinase assay with increasing concentration of AS283 measuring changes in pT286 and pS831 from purified CaMKII and GST-GluA1. **b**, Immunoblots for Fig.2c showing CaMKII binding to immobilized GST-2BC under ADP or AS283 conditions. **c**, Immunoblots for Fig.3e showing CaMKII binding to immobilized GST-2BC WT under ATP or AS283 conditions. **d**, Immunoblots for Fig.3f showing CaMKII binding to immobilized GST-2BC S1303A under ATP or AS283 conditions. **e**, Immunoblots for Fig.4b showing CaMKII WT, K42M, and F89G phosphorylation of GST-GluA1 at S831.

**SI Figure 2 | Uncropped immunoblots from Extended Data Figures.** Proteins were detected by western blotting, using the indicated antibodies and the red rectangles show the cropping location. **a**, Immunoblots for ED Fig.1c showing paCaMKII binding to immobilized GST-2BC under dark vs light with and without ADP. **b**, Immunoblots for ED Fig.2b from in vitro kinase assay with increasing concentration of ATP measuring changes in pS831 from purified CaMKII and GST-GluA1. **c**, Immunoblots for ED Fig.2d showing CaMKII binding to immobilized GST-2BC under ADP or AS105 conditions. **d**, Immunoblots for ED Fig.3c showing pT286 in dissociated neurons treated with cLTP or cLTP + AS283. **e**, Immunoblots for ED Fig.3d from in vitro kinase assay measuring pS1303 from purified CaMKII and GST-2BC and inhibition by AS283. **f**, Immunoblots for ED Fig.4a showing CaMKII WT and F89G phosphorylation of pT286 and effect of NM-PP1. **g**, Immunoblots for ED Fig.4c showing CaMKII-F89G binding to immobilized GST-2BC under ADP or NM-PP1 conditions.

Tullis et al., SI Figure 1



Tullis et al., SI Figure 2

