



CLINICAL IMAGE

Emphysematous gastritis

Ryosuke Takase^{1,2}  | Naoko Fukuda² | Osamu Sui³ | Hideharu Hagiya^{1,2} 

¹Department of General Medicine, Okayama University Graduate School of Medicine, Dentistry, and Pharmaceutical Sciences, Okayama, Japan

²Department of Internal Medicine, Marugame Medical Center, Marugame, Kagawa, Japan

³Department of Radiology, Marugame Medical Center, Marugame, Kagawa, Japan

Correspondence

Hideharu Hagiya, Department of General Medicine, Okayama University Graduate School of Medicine, Dentistry and Pharmaceutical Sciences, 2-5-1 Shikata-cho, Kita-ku, Okayama 700-8558, Japan.
Email: hagiya@okayama-u.ac.jp

Funding information

None to report

Abstract

An 89-year-old woman who had type 2 diabetes mellitus suddenly presented with abdominal pain. Abdominal computed tomography showed thickening of the wall and intramural gas in the gastric hilum, suggesting emphysematous gastritis. The patient underwent treatment with a proton-pump inhibitor and broad-spectrum antibacterial agents.

KEYWORDS

emphysematous gastritis, phlegmonous gastritis, portal venous gas

An 89-year-old woman who had type 2 diabetes mellitus and chronic kidney disease had been admitted to our hospital for rehabilitation. She suddenly presented with abdominal pain, vomiting, and hypotension. Abdominal computed tomography showed thickening of the wall and intramural gas in the gastric hilum, suggesting emphysematous gastritis, along with portal gas in the left lobe of the liver (Figure 1A). The patient underwent treatment with a proton-pump inhibitor and broad-spectrum antibacterial agents. Blood cultures taken prior to the initiation of antimicrobial therapy were negative. Two weeks after the onset, endoscopy showed post-hemorrhagic changes in

the gastric mucosa on the upper gastric bends (Figure 1B). The patient gradually recovered, resumed oral intake, and was discharged.

Emphysematous gastritis is caused by gas-producing bacteria, the mortality rate has been reported to be 55.3%.¹ As in our case, diabetes mellitus, malnutrition, and renal failure are risk factors for the disease.¹ Although it is important to differentiate it from gastric emphysema, cystic emphysema in the gastric wall is a characteristic of emphysematous gastritis on a CT scan.² When a patient with the abovementioned risk factors has sudden abdominal pain, emphysematous gastritis should be included in differential diagnosis.

This is an open access article under the terms of the Creative Commons Attribution License, which permits use, distribution and reproduction in any medium, provided the original work is properly cited.

© 2021 The Authors. *Clinical Case Reports* published by John Wiley & Sons Ltd.

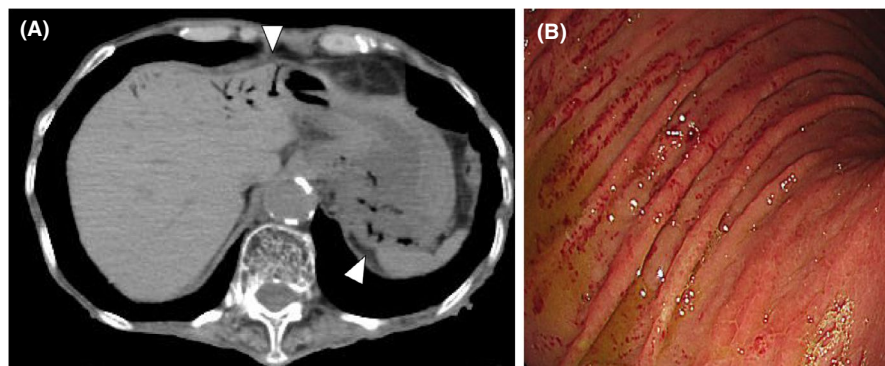


FIGURE 1 Abdominal computed tomography showing emphysematous gastritis and portal venous gas (A) and endoscopic findings (B)

CONFLICTS OF INTEREST

The authors state that there are no conflicts of interest to declare.

AUTHOR CONTRIBUTION

RT contributed to data collection, literature review, consent taking, and manuscript writing. NF and OS contributed to the clinical management of the patient. HH organized writing the manuscript.

ETHICAL APPROVAL

Written consent was obtained from the patient.

CONSENT

All the mentioned authors obtained for publication.

DATA AVAILABILITY STATEMENT

Data sharing is not applicable to this article as no datasets were generated or analyzed during the current study.

ORCID

Ryosuke Takase  <https://orcid.org/0000-0001-7124-9258>

Hideharu Hagiya  <https://orcid.org/0000-0002-5086-1891>

REFERENCES

1. Matsushima K, Won EJ, Tangel MR, et al. Emphysematous gastritis and gastric emphysema: similar radiographic findings, distinct clinical entities. *World J Surg.* 2015;39:1008-1017.
2. Zenooz NA, Robbin MR, Perez V. Gastric pneumatosis following nasogastric tube placement: a case report with literature review. *Emerg Radiol.* 2007;13:205-207.

How to cite this article: Takase R, Fukuda N, Sui O, Hagiya H. Emphysematous gastritis. *Clin Case Rep.* 2021;9:e05094. <https://doi.org/10.1002/ccr3.5094>