

RESEARCH ARTICLE

Open Access

The genes and enzymes of the carotenoid metabolic pathway in *Vitis vinifera* L.

Philip R Young¹, Justin G Lashbrooke¹, Erik Alexandersson^{1,2}, Dan Jacobson¹, Claudio Moser³, Riccardo Velasco³ and Melané A Vivier^{1*}

Abstract

Background: Carotenoids are a heterogeneous group of plant isoprenoids primarily involved in photosynthesis. In plants the cleavage of carotenoids leads to the formation of the phytohormones abscisic acid and strigolactone, and C₁₃-norisoprenoids involved in the characteristic flavour and aroma compounds in flowers and fruits and are of specific importance in the varietal character of grapes and wine. This work extends the previous reports of carotenoid gene expression and photosynthetic pigment analysis by providing an up-to-date pathway analysis and an important framework for the analysis of carotenoid metabolic pathways in grapevine.

Results: Comparative genomics was used to identify 42 genes putatively involved in carotenoid biosynthesis/catabolism in grapevine. The genes are distributed on 16 of the 19 chromosomes and have been localised to the physical map of the heterozygous ENTAV115 grapevine sequence. Nine of the genes occur as single copies whereas the rest of the carotenoid metabolic genes have more than one paralogue. The cDNA copies of eleven corresponding genes from *Vitis vinifera* L. cv. Pinotage were characterised, and four were shown to be functional. Microarrays provided expression profiles of 39 accessions in the metabolic pathway during three berry developmental stages in Sauvignon blanc, whereas an optimised HPLC analysis provided the concentrations of individual carotenoids. This provides evidence of the functioning of the lutein epoxide cycle and the respective genes in grapevine. Similarly, orthologues of genes leading to the formation of strigolactone involved in shoot branching inhibition were identified: *CCD7*, *CCD8* and *MAX1*. Moreover, the isoforms typically have different expression patterns, confirming the complex regulation of the pathway. Of particular interest is the expression pattern of the three *VvNCEDs*: Our results support previous findings that *VvNCED3* is likely the isoform linked to ABA content in berries.

Conclusions: The carotenoid metabolic pathway is well characterised, and the genes and enzymes have been studied in a number of plants. The study of the 42 carotenoid pathway genes of grapevine showed that they share a high degree of similarity with other eudicots. Expression and pigment profiling of developing berries provided insights into the most complete grapevine carotenoid pathway representation. This study represents an important reference study for further characterisation of carotenoid biosynthesis and catabolism in grapevine.

Background

In the last decade genomic research has been characterised by the initiation and completion of a number of sequencing projects from a diverse array of genus/species, including grapevine. With two grapevine genome sequences completed [1,2] the non-trivial task of identifying and assigning biological functions to the putative gene assignments

begins [3]. The availability of sequenced genomes and comparative genomics currently makes it possible to identify putative orthologues quite rapidly [4,5]. The annotation of unknown proteins with unclear functions presents a significant challenge and potentially holds unique/novel information specifically for grapevine research. This study targeted the carotenoid biosynthetic/catabolic pathways of grapevine to provide a baseline understanding of the genes, their genomic organisation and their expression patterns in developing berries. Previous studies reporting on genome organization and/or expression patterns in grapevine relied

* Correspondence: mav@sun.ac.za

¹Institute for Wine Biotechnology, Department of Viticulture and Oenology, Stellenbosch University, Matieland 7602, South Africa
Full list of author information is available at the end of the article

on ESTs, partial genome sequences or candidate genes. The carotenoid metabolic pathway is highly conserved and ubiquitous in photosynthetic organisms. (reviewed in [6]). Carotenoids are essential pigments in photosynthetic organisms (plants and some micro-organisms) and are involved in a number of physiological and developmental processes. In plants, carotenoids accumulate in leaves, flowers and fruits; and their major function is the protection of the photosynthetic membranes. The enzymatic or oxidative cleavage of carotenoids leads to the formation of apocarotenoids with functions ranging from phytohormones (i.e. abscisic acid and strigolactone) to volatile flavour/aroma compounds (e.g. β -ionone, β -damascenone and trimethyl- dihydro-naphthalene (TDN) (reviewed in [7-9]). The carotenoid content of plants has also received attention due to their antioxidant- and provitamin A potential and thus their importance to both animal and human nutrition [10,11]. The genes involved in carotenoid biosynthesis and catabolism are therefore attractive targets for genetic manipulation to increase the carotenoid content of fruits and seeds. A number of papers have been published reporting the successful genetic modification of crop plants and includes rice, tomato, potato and canola [12-15].

Comparative genomics was used to identify 42 putative orthologues in the grapevine genomic sequence for all the known enzymatic reactions in the carotenoid biosynthetic and catabolic pathways of plants. Grape-specific arrays were used to profile the expression of the annotated genes in the carotenoid biosynthetic/catabolic pathways during three distinct stages of berry development: green, véraison and ripe/harvest stages and the expression correlated to experimentally obtained berry carotenoid concentrations. Pathway analysis (both biosynthetic and catabolic) of the respective genes and metabolites was used to follow carotenoid evolution during berry development in *Vitis vinifera* L. cv Sauvignon blanc. The corresponding cDNA copies of 11 of the 42 orthologues identified have been isolated, sequenced and additionally four have been shown to be functional and are discussed in the broader context of carotenoid biosynthesis.

Results

In silico characterisation of the carotenoid metabolic pathway genes from *Vitis vinifera*

Forty two *V. vinifera* putative carotenoid metabolic gene orthologues were identified by *in silico* screening of the PLAZA [4,5] grapevine database using the *Arabidopsis* sequences obtained from AtIPD [16]. A multiple alignment was created using the 42 *Vitis* sequences and the corresponding *Arabidopsis* orthologues and a maximum likelihood method [17] used to generate a bootstrapped molecular phylogenetic tree (Figure 1). Sequence similarity was used to assign putative function(s) to the identified grapevine orthologues. Additional file 1 lists the grapevine

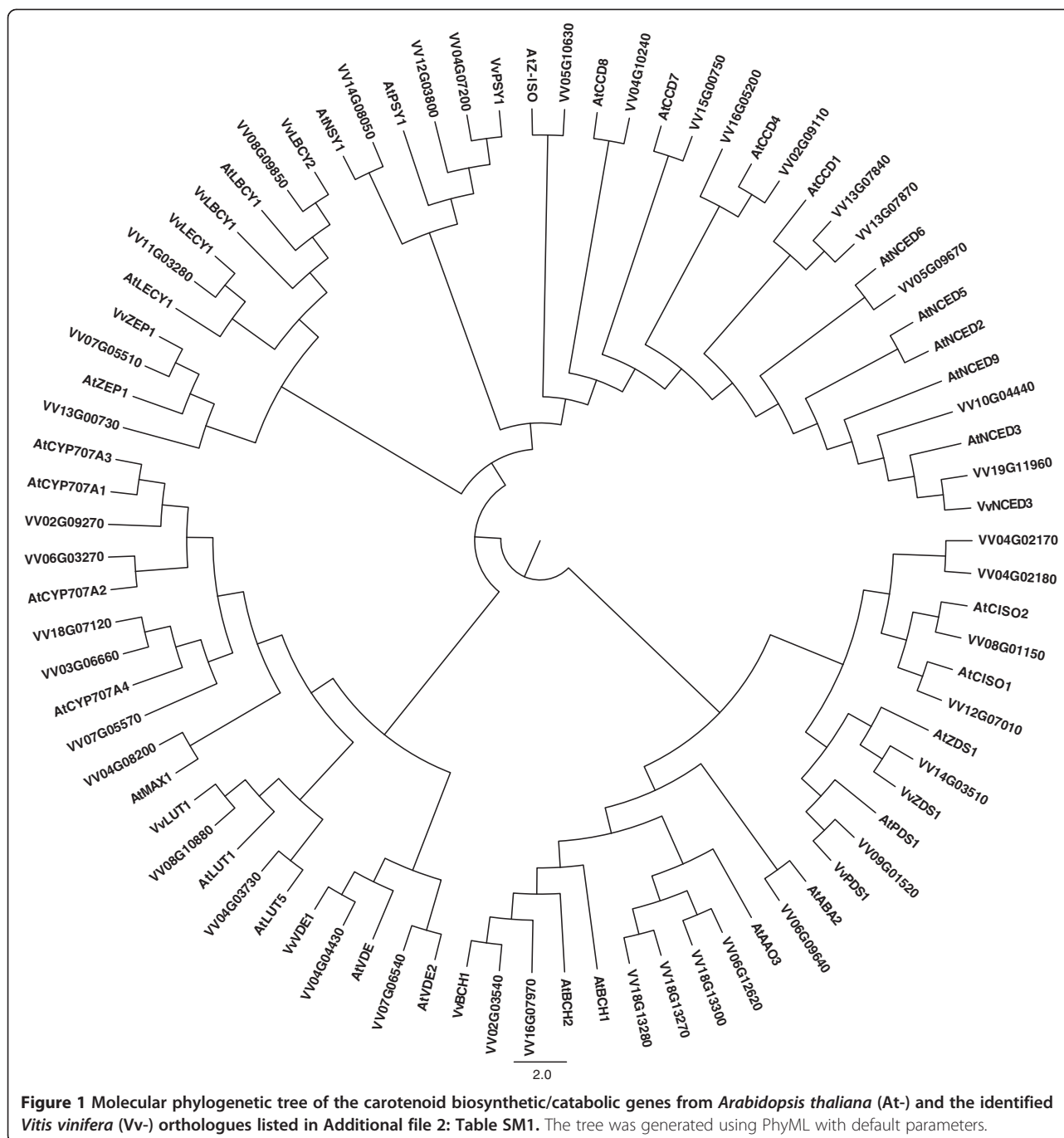
gene name, the corresponding PLAZA accession(s), the associated Roche Nimblegen probe accession, the *Arabidopsis* orthologue accession and the putative gene assignment.

Additional file 2 shows the distribution of the 37 (of the 42) genes identified and listed in Additional file 1 in the grapevine genome. Where possible the genes were positioned on the genome sequence assembly of the heterozygous ENTAV115 described in Velasco et al. [1]. Five of the genes could not be localised on the ENTAV115 genome sequence, but were localised in the PN40024 genome sequence. The putative genes are shown on the corresponding linkage groups together with reference markers of the genetic map described in Troggio et al. [18]. The carotenoid metabolic genes are distributed throughout the grapevine genome, and are positioned on 16 of the 19 chromosomes (all except chromosomes 1, 9 and 17 contain pathway members). Two tandem duplications are evident amongst the genes analysed: *VvPDH1* and *VvPDH2* on chromosome 4, and *VvCCD1.1* and *VvCCD1.2* on chromosome 13. Two segmental duplication events are also present: *VvCYP707A2.2* on chromosome 7 and *VvCYP707A2.3* on chromosome 18, as well as *VvBCH1* on chromosome 2 and *VvBCH2* on chromosome 16.

Isolation and characterisation of 11 of the carotenoid metabolic pathway genes from *Vitis vinifera*

The full-length cDNA copies of 11 of the 42 genes listed in Additional file 1 were PCR-amplified from *V. vinifera* L. cv Pinotage cDNA, namely: *VvPSY1*, *-PDS1*, *-ZDS1*, *-LECY1*, *-LUT1*, *-LBCY2*, *LBCY1*, *-BCH1*, *-ZEP1*, *-VDE1*, and *-NCED3*. The cDNA fragments were isolated, cloned and verified by sequencing and submitted to Genbank: *VvPSY1* (JQ319634), *-PDS1* (JQ319635), *-ZDS1* (JQ319636), *-LECY1* (JQ319637), *-LUT1* (JQ319638), *-LBCY2* (JQ319639), *LBCY1* (JQ319643), *-BCH1* (JQ319640), *-ZEP1* (JQ319641), *-VDE1* (JQ319642), and *-NCED3* (JQ319644). Additional file 1 lists the genes, sequence information and the closest *Arabidopsis* match in the publicly available grapevine sequence repositories.

The ProtComp server [19] was used to predict the sub-cellular localisation of the respective predicted proteins (of the isolated genes) (Table 1). These results indicated that the predicted proteins of the *V. vinifera* genes are likely localised in the chloroplast, as found in other species [6]. The respective genomic sequences of the isolated carotenoid metabolic genes were identified based on homology to the cDNA sequences. Table 1 lists the sizes of the full-length cDNA- and genomic copies of the isolated grapevine genes as well as the associated linkage groups. Analysis of the genomic structure of a subset of the carotenoid metabolic genes (listed in Additional file 1) showed that the number of exons of the isolated carotenoid metabolic genes in the available plant genomes is remarkably



well conserved (Table 2). The degree of identity between the predicted amino acid sequence for each isolated grapevine carotenoid biosynthetic/catabolic genes and the respective orthologues in *A. thaliana*, *P. trichocarpa* and *O. sativa* was calculated. The amino acid sequences of the grapevine genes are highly conserved and phylogenetically more similar to members of the eudicots (e.g. *Arabidopsis* and *Populus*) than the monocots (e.g. *Oryza* and *Sorghum*) (Table 3).

Functional analysis of VvPSY1, VvLECY1, VvLBCY2 and VvBCH1

The functionality of the isolated VvPSY1, VvLECY1, VvLBCY2 and VvBCH1 was assayed using a bacterial complementation system (described in [20,21]). The pigments accumulated in the transformed *E. coli* cells were extracted and analysed by HPLC and the characteristic formation/degradation of pigments used to determine the functionality of the expressed plant genes. The grapevine VvPSY1, a

Table 1 Sequence information and related accessions

GENE	cTP ¹	cDNA (bp) ²	gDNA (bp) ³	DFCI TIGRAccession ⁴	Unigene Accession ⁵	Associated Linkage Group (LG) ⁶	
						IASMA ⁷	Genoscope ⁸
<i>VvPSY1</i>	YES	1317	3837	TC43355	Vvi.4169	LG4	LG4
<i>VvPDS1</i>	YES	1749	26291	CN007512	Vvi.17887	ND ⁹	LG9
<i>VvZDS1</i>	YES	1752	12807	TC4818	Vvi.6755	LG14	LG14
<i>VvLECY1</i>	YES	1593	6670	TC49056	Vvi.11880	LG11	LG11
<i>VvLUT1</i>	YES	1692	5244	EC943050	None ¹⁰	LG8	LG8
<i>VvLBCY2</i>	YES	1515	1515	TC50860	Vvi.2624	LG8	LG8
<i>VvLBCY1</i>	YES	1494	1494	EC925449	Vvi.18979	LG6	LG6
<i>VvBCH1</i>	YES	900	1660	TC42069	Vvi.2348	LG2	LG2
<i>VvZEP1</i>	YES	1977	7524	TC46508	Vvi.1307	LG7	LG7
<i>VvVDE1</i>	YES	1440	4971	TC47195	Vvi.1247	LG4	LG4
<i>VvNCED3</i>	YES	1833	1833	TC48377	Vvi.509	LG19	LG19

¹ cTP: Softberry ProtComp (<http://www.softberry.com/berry.phtml>) prediction for a chloroplast transit peptide.

² The size in base pairs of the cDNA copy of the gene from the predicted ATG to the predicted STOP codon;

³ The size in base pairs of the genomic copy of the gene from the predicted ATG to the predicted STOP codon;

⁴ The DFCI TIGR (www.tigr.org) accession number(s) of tentative consensus sequence corresponding to the isolated gene;

⁵ The Unigene (www.ncbi.nlm.nih.gov/unigene) accession numbers(s) corresponding to the isolated gene;

⁶ The grapevine linkage group (LG) associated with the isolated gene;

⁷ The heterozygous ENTAV115 Pinot noir genome sequence from IASMA (<http://genomics.research.iasma.it/iasma/>);

⁸ The homozygous PN40024 Pinot noir genome sequence from Genoscope (www.cns.fr/spip/Vitis-vinifera-whole-genome.html);

⁹ ND: Not determined; could not be mapped to the ENTAV115 genomic sequence.

¹⁰ None: No associated *Vitis* Unigene(s) (<http://www.ncbi.nlm.nih.gov/UniGene/UGOrg.cgi?TAXID=29760>).

putative phytoene synthase, could functionally complement a bacterial phytoene synthase in the heterologous bacterial assay (Table 4). *VvLECY1*, a putative lycopene ϵ -cyclase converted 42.1% of the available lycopene to ζ -carotene; *VvLBCY2*, a putative lycopene β -cyclase, converted 72.1% of the available lycopene to β -carotene; whereas *VvBCH1*, a putative β -carotene hydroxylase, converted 94.5% of the available β -carotene to β -cryptoxanthin (26.9%) and zeaxanthin (67.6%) (Table 4).

Expression analysis of the 42 carotenoid metabolic genes in developing *Vitis vinifera* L. Cv Sauvignon blanc berries

The expression of the 42 carotenoid biosynthetic/catabolic genes listed in Additional file 1 was analysed by Nimblegen microarrays (12 × 135 K). The expression data (Additional file 3 is represented in Figure 2 as a heat map in the context of the individual gene's position within the carotenoid metabolic pathway). Cluster analysis was used to identify and group the carotenoid metabolic genes having similar developmental expression patterns (Figure 3).

From Figures 2 and 3 it can be seen that the expression of six of the carotenoid metabolic genes increased throughout the berry developmental stages: *VvPDH1*, *VvZISO1*, *VvLBCY2*, *VvVDE2*, *VvCCD4a* and *VvCCD4b*. The expression of *VvCCD4b* increased dramatically from relatively low levels in the green stage reaching ~256-fold upregulation by véraison and ~315-fold by ripe/harvest stage (relative to the green stage). Similarly, but to a lesser extent,

VvCCD4a shows a 13-fold upregulation at the ripe/harvest stage (relative to the initial transcript levels at the green stage). Conversely the expression of ten genes decreases as the season progresses: *VvA8H-CYP707A2.1*, *VvBCH2*, *VvLBCY1*, *VvLUT1*, *VvNCED2*, *VvPDH1*, *VvPDS1*, *VvPSY1*, *VvZEP1* and *VvZEP2*. *VvA8H-CYP707A2.1* displays the most downregulation, reaching a 70-fold decrease from the green to the ripe/harvest stage. Similarly, the expression of *VvBCH2*, *VvLUT1*, *VvPSY1* and *VvNCED2* is downregulated 4–6-fold by the ripe/harvest stage (relative to the green stage). The expression profiles of a number of genes change at or around the véraison stage. For *VvA8H-CYP707A1*, *VvCCD1.1*, *VvCCD1.2*, *VvCISO1*, *VvNCED3*, *VvNSY1*, *VvPSY2*, *VvVDE1* and *VvZDS1* the expression peaks at véraison; and for *VvLECY1*, *VvMAX1* and *VvVDE2* the expression is lowest at véraison and increases up until the ripe/harvest stage. Absolute expression values were constitutively low for *VvA8H-CYP707A2_3*, *VvA8H-CYP707A4*, *VvABA2*, *VvBCH1*, *VvCCD4c*, *VvCCD7* and *VvCCD8* in the berry stages investigated, and transcriptional regulation of these genes may be tissue-specific and/or developmental regulated. *VvBCH1* was, however, shown to be functional in a heterologous complementation system (Table 4).

Only *VvZDS1*, *VvZISO1*, *VvABA2*, *VvLECY1*, *VvLUT1*, *VvLUT5*, *VvNSY1*, *VvCCD7* and *VvCCD8* occur as single copy genes in the grapevine genome; the rest of the carotenoid metabolic genes have more than one paralogue (isoforms). The different isoforms of the carotenoid metabolic genes typically have distinctly different expression

Table 2 Percentage identity of the predicted protein sequences of the carotenoid metabolic genes (expressed relative to the *Vitis vinifera* orthologue)

GENE	<i>Vitis vinifera</i>	Accession number ¹		
		Percentage identity ² relative to the <i>Vitis vinifera</i> orthologue		
		<i>Arabidopsis thaliana</i>	<i>Populus trichocarpa</i>	<i>Oryza sativa</i>
VvBCH1	W02G00220 100%	AT4G25700 66.24%	PT00G07815 66.67%	OS03G03370 68.04%
VvECH1	W08G13950 100%	AT3G53130 76.68%	PT00G01240 80.33%	OS10G39930 69.91%
VvLBCY2	W08G15130 100%	AT3G10230 79.49%	PT16G03200 89.09%	OS02G09750 69.67%
VvLBCY1	W00G44920 100%	No orthologue	PT09G01040 76.91%	No orthologue
VvLECY1	W11G01840 100%	AT5G57030 76.13%	PT06G09650 84.16%	OS01G39960 68.68%
VvNCED3	W19G09570 100%	AT3G14440 71.64%	PT11G07980 79.39%	OS03G44380 64.43%
VvPDS1	W09G00040 100%	AT4G14210 81.66%	PT14G09510 84.74%	OS03G08570 77.15%
VvPSY1	W00G37410 100%	AT5G17230 71.14%	PT00G07390 87.32%	OS06G51290 68.78%
VvVDE1	W00G14320 100%	AT1G08550 66.02%	PT13G04830 86.75%	OS04G31040
VvZDS1	W14G05860 100%	AT3G04870 82.72%	PT00G12105 89.62%	OS07G10490 80.10%
VvZEP1	W07G11310 100%	AT5G67030 71.41%	PT05G05140 72.73%	OS04G37619 69.30%

¹ Accession from Plaza 1.0 (April 2009): http://bioinformatics.psb.ugent.be/plaza_v1/.

² Percentage identity calculated by pairwise alignments of protein sequences using Jalview.

patterns (Figure 2 and Figure 3). For example, the expression profiles of the three putative *VvPDS/PDH*-encoding genes have three distinct expression patterns: *VvPDS1* and *VvPDH1* have similar profiles with expression decreasing as the growth season progresses. *VvPDH1*, however, has an inverse expression pattern and increased, peaking at harvest. *VvZEP1* and *VvZEP2* are an exception and have a similar expression pattern (both profiles decreased from the green to the ripe/harvest stage) (Figure 2).

Four groupings of genes are of particular interest in the pathway representation in Figure 2: (1) the genes encoding for enzymes involved in the violaxanthin- and lutein epoxide (xanthophyll) cycles involved in photoprotection (*VvVDE1*, *VvVDE2*, *VvZEP1* and *VvZEP2*); (2) genes encoding for enzymes that cleave carotenoids to form the phytohormone ABA (*VvNCED1*, *VvNCED2* and *VvNCED3*); (3) genes encoding for enzymes that cleave carotenoids to form the phytohormone strigolactone (*VvCCD7*, *VvCCD8* and *MAX1*); and (4) genes encoding for enzymes that cleave carotenoids to form volatile flavour- and aroma-related

compounds e.g. β -ionone (*VvCCD1*, *VvCCD4a* and *VvCCD4b*) [22-24].

Carotenoids and chlorophylls in developing Sauvignon blanc berries

The photosynthetic pigments (chlorophylls and carotenoids) were monitored at the three sampling time-points. Additional file 4 and Figures 2 and 3 show the changes in carotenoid and chlorophyll concentrations during ripening in the grape berries. The majority of the photosynthetic pigments (chlorophyll a and b, β -carotene, lutein, violaxanthin and neoxanthin) decreased throughout ripening (i.e. from the early/green stage till the ripe/harvest date). The total carotenoid content decreases approximately 3-fold during ripening/maturation (Additional file 4). This trend can be mainly attributed to decreases in lutein and β -carotene that represent the most abundant carotenoids in berries (representing 55-60% of the total carotenoid pool size). Interestingly, the xanthophylls zeaxanthin and antheraxanthin showed an inverse trend by increasing, with zeaxanthin

Table 3 The carotenoid metabolic genes: Gene families and the conservation of exon number

Gene	Gene family ⁶	Sub family ⁷	<i>Vitis</i>	<i>Arabidopsis</i>	<i>Populus</i>	<i>Oryza</i>	Average
			<i>vinifera</i> ¹	<i>thaliana</i> ²	<i>trichocarpa</i> ³	<i>sativa</i> ⁴	
			Accession	Accession	Accession	Accession	Exon number
			Exon (intron) ⁵	Exon (intron)	Exon (intron)	Exon (intron)	
PSY	HOM001375	ORTHO001026	W00G37410 6 (5)	AT5G17230 6 (5)	PT00G07390 6 (5)	OS06G51290 6 (5)	6
PDS	HOM001528	ORTHO003376	W09G00040 14 (13)	AT4G14210 14 (13)	PT14G09510 14 (13)	OS03G08570 14 (13)	14
ZDS	HOM001528	ORTHO003216	W14G05860 14 (13)	AT3G04870 15 (14)	PT00G12105 14 (13)	OS07G10490 14 (13)	14 ± 0.8
CISO	HOM003569	-	W08G02490 13 (12)	AT1G06820 13 (12)	PT16G05590 13 (12)	OS11G36440 13 (12)	13
LECY	HOM001393	ORTHO004775	W11G01840 11 (10)	AT5G57030 11 (10)	PT06G09650 6 (5)	OS01G39960 10 (9)	9.5 ± 2.4
ECH	HOM000057	-	W08G13950 9 (8)	AT3G53130 9 (8)	PT00G01240 9 (8)	OS10G39930 10 (9)	9.3 ± 0.5
LBCY	HOM001393	ORTHO005684	W08G15130 1 (0)	AT3G10230 1 (0)	PT16G03200 1 (0)	OS02G09750 1 (0)	1
BCH	HOM002126	-	W02G00220 7 (6)	AT4G25700 7 (6)	PT00G07815 7 (6)	OS03G03370 6 (5)	6.8 ± 0.5
ZEP	HOM004000	-	W07G11310 16 (15)	AT5G67030 16 (15)	PT05G05140 16 (15)	OS04G37619 16 (15)	16
VDE	HOM005780	-	W00G14320 5 (4)	AT1G08550 5 (4)	PT13G04830 2 (1)	OS04G31040 5 (4)	4.3 ± 1.5
NSY	HOM001393	ORTHO015350	W00G44920 1 (0)	NA	PT09G01040 1 (0)	NA	1
NCED	HOM000257	ORTHO000562	W19G09570 1 (0)	AT3G14440 1 (0)	PT11G07980 1 (0)	OS03G44380 1 (0)	1
CCD	HOM000257	ORTHO003354	W13G12530 14 (13)	AT3G63520 14 (13)	PT01G17700 14 (13)	OS12G44310 14 (13)	14

¹ *Vitis vinifera* sequence data from Genoscope v1: http://grup.bio.unipd.it/index.php/Grape_Genome.

² *Arabidopsis thaliana* sequence data from TAIR8: <http://www.arabidopsis.org/>.

³ *Populus trichocarpa* sequence data from JGI 1.1: http://genome.jgi-psf.org/Poptr1_1/Poptr1_1.home.html.

⁴ *Oryza sativa* sequence information from TIGR5: <http://rice.plantbiology.msu.edu/>.

⁵ Accession number from Plaza 1.0 (April 2009): (PLAZA v1: http://bioinformatics.psb.ugent.be/plaza_v1/).

⁶ The gene family that the homologues are group into (PLAZA v1: http://bioinformatics.psb.ugent.be/plaza_v1/).

⁷ The sub-family that the orthologues group into (PLAZA v1: http://bioinformatics.psb.ugent.be/plaza_v1/).

peaking at harvest (E-L stage 38); and antheraxanthin peaking at véraison (E-L stage 34). The ratio of carotenoids/chlorophylls (~0.2) as well as the ratio of chlorophyll a/chlorophyll b (~1.7) remains relatively constant throughout the sampling stages.

Abscisic acid levels in developing Sauvignon blanc berries
 ABA was measured at the three sampling time-points. Additional file 5 shows the changes in ABA levels during ripening in the grape berries. The skin and pulp (without seeds) were analysed collectively. ABA concentration

increased from the initial green stage, peaking at véraison. ABA levels increase ~5-fold from the green to véraison stage, and decreases ~4-fold from the véraison stage to the ripe/harvest stage.

Discussion

Distribution of the carotenoid metabolic genes in the grape genome

The number of grapevine cultivars is estimated at between 5,000 and 8,000. The availability of this relatively large germplasm collection, and the fact that crosses

Table 4 Functional complementation of grapevine carotenoid biosynthetic genes in *Escherichia coli*

Strain	Lycopene	δ -carotene	β -carotene	β -cryptoxanthin	zeaxanthin	Unknown	Total pigments
pAC-LYC + pGEM (control)	100.00	ND ¹	ND	ND	ND	ND	100.00
pAC-LYC + VvLBCY2	22.4	ND	72.1	ND	ND	5.5	100.00
pAC-LYC + VvLECY1	57.90	42.10	ND	ND	ND	ND	100.00
pAC-BETA + pGEM (control)	ND	ND	100.00	ND	ND	ND	100.00
pAC-BETA + VvBCH1	ND	ND	5.5	26.9	67.6	ND	100.00
pAC-85b + pGEM (control)	ND	ND	ND	ND	ND	ND	ND
pAC-85b + VvPSY1	ND	ND	100.00	ND	ND	ND	100.00

¹ "ND", not detected.

Carotenoid accumulating *E. coli* cells were transformed with the respective cloned cDNA copies of the grapevine genes. The individual carotenoids analysed are expressed as percentages of the total pigments formed (standard error $\leq 5\%$ ($n \geq 3$)).

between wild and domesticated grape species result in fertile hybrids; makes the use of marker assisted selection (MAS) particularly useful for breeders. MAS allows the monitoring of segregation patterns of specific markers in the progeny, as well as the potential to identify genotypes with multiple loci at a relatively early stage.

Gene targeted markers (or functional markers) are especially useful for the MAS approach because in this case the marker coincides with the gene sequence and it is strictly associated with the trait of interest, if known. An example of the potential of this approach in grapevine has been reported by Battilana and co-workers [25]. They demonstrated that the *DXS* gene (encoding a 1-deoxy-D-xylulose 5-phosphate synthase) is the major determinant of monoterpene content in the grapes by QTL analysis and candidate gene approach. Similarly, linking the genes of the carotenoid metabolic pathway to a viticultural/oenological quality parameter can facilitate targeted marker-assisted (molecular) breeding.

Here we show that the carotenoid metabolic genes are distributed on 17 of the 19 grapevine chromosomes (Additional file 2) and we identified the flanking molecular markers. Moreover, through functional complementation assays in bacteria, we confirm the functions of VvPSY1, VvLECY1, VvLBCY2 and VvBCH1, thus providing functional markers for carotenoid metabolism (Additional file 2). The system showed conversion of the substrates to form the products shown in Table 4, confirming the usefulness of this bacterial system for heterologous expression of plant carotenoid metabolic genes. The reasons for the partial or incomplete conversion observed in the functional complementation assay were not investigated, but is possibly due to the difficulties experienced when expressing plant (eukaryotic) proteins in bacterial (prokaryotic) systems.

The grapevine orthologues involved in the formation of the phytohormone strigolactone: *VvCCD7*, *VvCCD8* and *VvMAX1* have been identified. The absolute expression values of all three genes remained relatively low in the berry stages analysed (Figure 2). Whether or not these genes are transcriptionally active in other plant

organs (i.e. the roots) is currently not known and requires further study.

The *in silico* analysis showed conservation of the number of exons of the isolated carotenoid biosynthetic/catabolic genes across plant species. This phenomenon has previously been observed in carotenoid metabolic genes in both the maize and rice phytoene desaturase encoding (*PDS*) genes [26] and to a lesser extent in the *CCD* gene family (*CCD1*, *CCD4a*, *CCD4b*, *CCD7* and *CCD8*) [27]. The reason for the observed conservation of intron number/density/abundance is unclear but the phenomenon seems quite common. For example, a study comparing 117 human and mouse orthologous genes found that 95% of these genes had the same number of exons [28].

Carotenoid biosynthesis and catabolism in developing Sauvignon blanc berries

Grapevine berry development and ripening is a relatively well-studied process. The carotenoid content of grapevine berries has similarly received much attention and typically a steady decline in the abundance of carotenoids after véraison occurs [29-32]. This decline in the carotenoid content of grape berries appears to be associated with the disappearance of chloroplasts [30] and the formation of important aromatic C₁₃-norisoprenoids (e.g. β -ionone, β -damascenone and vitispirane) in a number of cultivars including Sauvignon blanc [24,33]. Crupi et al. [34] suggested that this change in carotenoid concentration from véraison to harvest can be correlated with the ultimate flavour and aroma of grapes and wine. As alluded to by Kamffer et al. [35] and subsequently demonstrated by Lashbrooke et al. [36]; the analysis of the carotenoid and chlorophyll content of grapevine berries is technically quite challenging due to the susceptibility of these compounds to degradation. Papers utilising HPLC to determine carotenoid content often show evidence of chlorophyll degradation products in the respective chromatograms (i.e. pheophytin) (e.g. [32,35,37]). It is generally not reported if this is an artifact of the extraction method, or a true reflection of the carotenoid content of the berries [32,35]. Lashbrooke et al. [36], however, showed that conditions

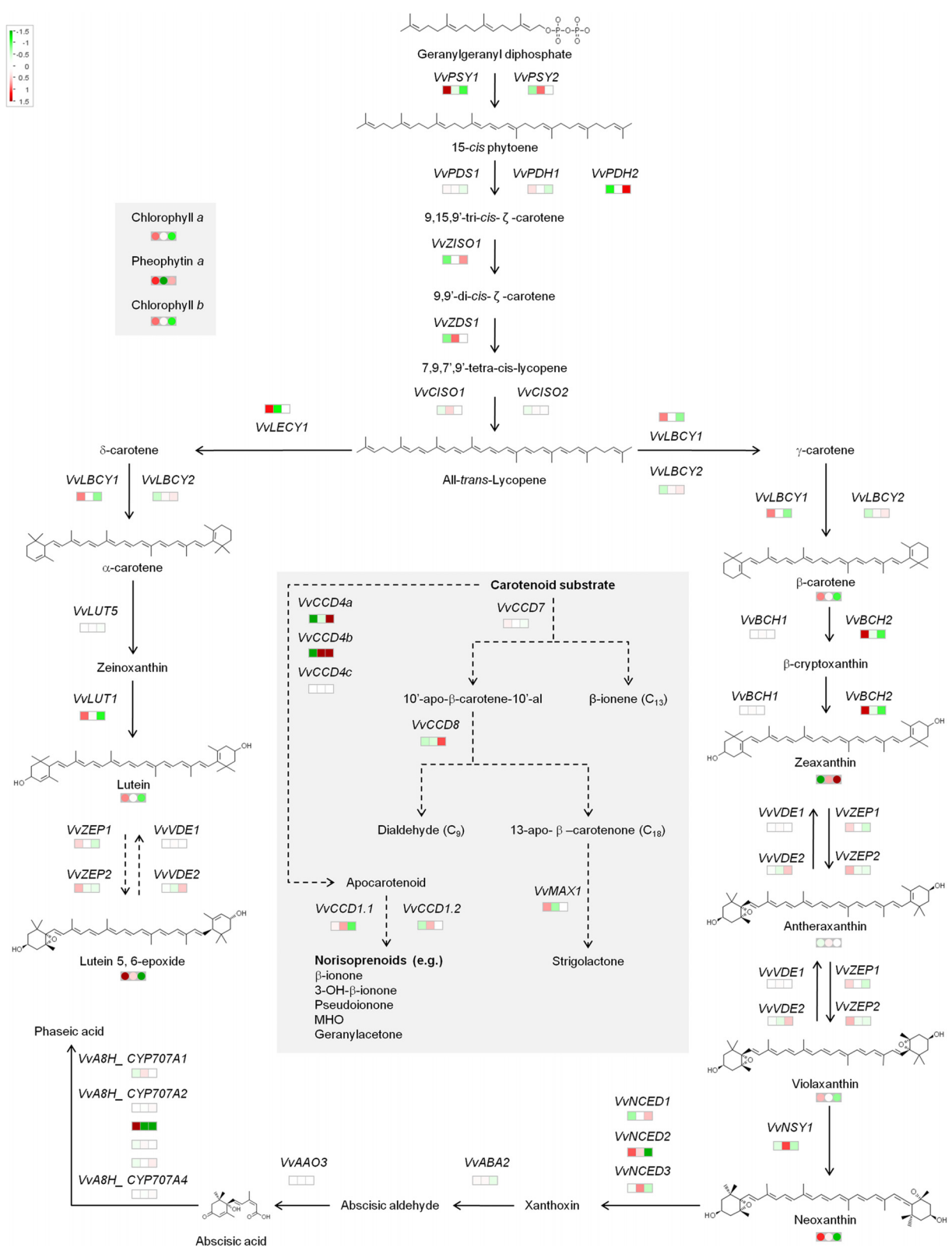


Figure 2 (See legend on next page.)

(See figure on previous page.)

Figure 2 Pathway analysis of the carotenoid biosynthetic and catabolic pathways. A Mapman heat map representation of the relative changes in gene and metabolites levels at the three stages of berry development (E-L stage 31, -34 and -38). The values for the transcripts (squares) and carotenoids (circles) have been log₂-scaled and mean centred. The amplitude of the carotenoid values are scaled up 100x for visualisation. Refer to Additional file 3: Table SM2 (expression values) and Additional file 5: Table SM3 (carotenoid concentrations) for the absolute values.

leading to the degradation of chlorophylls (and the concomitant formation of pheophytin) also lead to a degradation of carotenoids. Since degradation is not constant for all the pigments investigated (carotenoids and chlorophylls); an internal standard will not compensate accurately for this loss and this should be considered when attempting to correlate metabolite levels to, for example, transcript levels.

The total carotenoid concentration of the Sauvignon blanc berries showed a gradual decrease throughout the growth season with the lowest levels at harvest (Additional file 4). The concentration of only two carotenoids increased, namely: zeaxanthin and antheraxanthin (Additional file 4). In photosynthetic tissues, these two xanthophylls (together with violaxanthin) are involved in the xanthophyll (or violaxanthin) cycle: the reversible enzymatic conversion of violaxanthin to zeaxanthin (via the intermediate antheraxanthin). Under normal, non-stressed conditions, zeaxanthin is converted to violaxanthin by zeaxanthin epoxidase (ZEP). However, when photoprotection is required, violaxanthin is rapidly converted via antheraxanthin to zeaxanthin by violaxanthin de-epoxidase (VDE). Grapevine berries photosynthesise during the early stages of development in which case the carotenoids play a crucial role in the photosynthetic membranes by harvesting light and assisting in photoprotection [38-40]. The decline in total carotenoids closely follows the decline observed in total chlorophylls (carotenoid/chlorophyll ratios in Additional file 4). Only zeaxanthin and antheraxanthin showed an increase during ripening. Carotenoids have been shown to be more abundant in the skin versus the pulp or juice and although the abundance of carotenoids in berries is approximately 100-times lower than in leaves; the ratios of the photosynthetic pigments in berries are similar. Similar studies have shown comparable trends in carotenoid levels. In a water stress study conducted on berries of Cabernet Sauvignon and Chardonnay grapevine cultivars, the well-watered control plants of both cultivars showed a decrease in carotenoids during ripening [37]. Chlorophyll levels, however, were relatively low and antheraxanthin decreased and zeaxanthin could not be quantified at all. The authors attributed the low levels of chlorophylls (and the concomitant increase in pheophytin) as being artifacts of the extraction protocol, but added that carotenoid levels were unaffected. Lashbrooke et al. [36] demonstrated that carotenoids (especially the xanthophylls) are degraded under the conditions described in Deluc et al. [37] with the individual pigments having varying susceptibilities to degradation. Degradation would most likely have affected the

concentration of other carotenoids, without necessarily affecting the observed trends.

Interestingly, the pigment analysis of the carotenoids showed the presence of lutein 5,6 epoxide; a xanthophyll involved in the lutein epoxide (Lx) cycle (reviewed in [41]) (Additional file 4 and Figure 2). The Lx cycle occurs in the α -carotene branch of the carotenoid biosynthetic pathway and functions similarly to the violaxanthin pathway (in the β -branch): during low light conditions (shade) there is an accumulation of lutein 5,6 epoxide that is de-epoxidised to lutein following light exposure. It is thought that the Lx cycle requires the same enzymes as the violaxanthin cycle (i.e. ZEP and VDE) [42], although there is some doubt whether lutein is a substrate for ZEP [43]. Kinetic experiments by Matsubara et al. [44] showed that the conversion of Lx to lutein is only slowly reversible. The authors speculated that the Lx cycle serves as an additional, slower reversible mechanism of photoprotection that supplements the violaxanthin cycle in shade plants. Not all plant species accumulate Lx, and the Lx cycle has been described as having an irregular taxonomical distribution in unrelated taxa [41]. Here we show that grapevine forms the carotenoids for both a violaxanthin cycle (violaxanthin and zeaxanthin) as well as an Lx cycle (lutein and lutein 5,6 epoxide); and possesses two isoforms for each of the required enzymes (i.e. ZEP and VDE) (Figure 2 and Additional file 4). Little is known about the regulation of these two pathways: that dedicated enzymes (ZEP and VDE) are required is improbable since the carotenoid substrates occur in the same localisation (the chloroplast), and whether or not transcriptional regulation is involved requires further study.

In later stages of berry development the products of the enzymatic cleavage of carotenoids (by the VvCCDs) are known to be potent flavour and aroma compounds (reviewed in [23]). It is possible that the CCDs have a recycling function converting their carotenoid substrates to volatile products that are desirable flavour and aroma compounds in grapes and wine. Interestingly the expression profiles of *VvCCD1.1* and *VvCCD1.2* increase up until véraison, and *VvCCD4a* and *VvCCD4b* increase dramatically throughout berry development and total carotenoid content concomitantly decreases (Figure 2 and Figure 3). Previous work in berries of Muscat of Alexandria and Shiraz [24], Trincadeira [45], and Chardonnay and Cabernet Sauvignon [31] grapevine

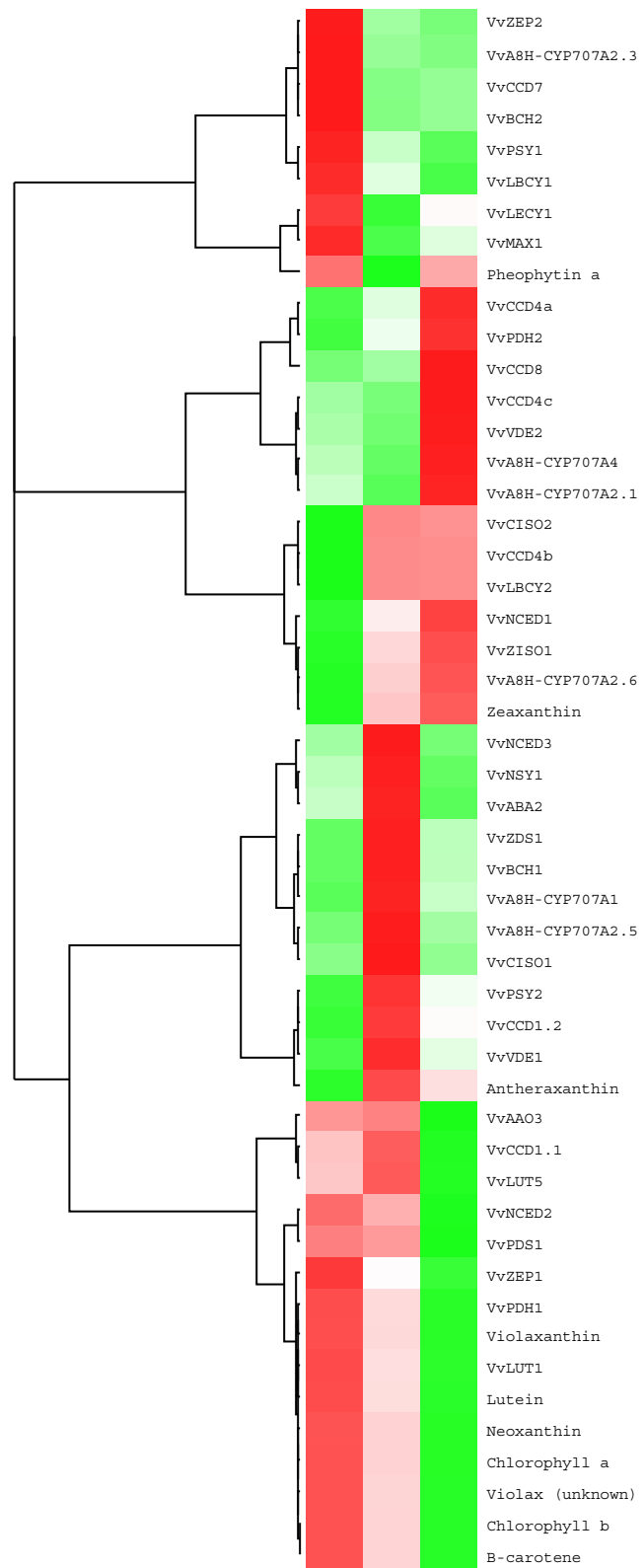


Figure 3 Hierarchical cluster analysis of the expression and metabolites of the carotenoid biosynthetic and catabolic pathway.

cultivars showed that expression of the grapevine *VvCCD1* was induced approaching véraison. *VvCCD1* was shown to be functional and can cleave both lutein and zeaxanthin, but not β -carotene, to form 3-hydroxy- β -ionone [24]. The authors showed a concomitant increase in the glycosylated and free forms of C_{13} -norisoprenoids in berries of both cultivars (Muscat of Alexandria and Shiraz). It is currently not known if *VvCCD1* is capable of cleaving additional carotenoids present in berries. *VvCCD4a* has recently been identified in grapevine and the authors reported the upregulation of the gene towards the end of ripening [27,28]. The authors suggest a possible role of *CCD4a* in berry colour, flavour and aroma of Chardonnay berries, even though functionality could not be demonstrated with a number of carotenoid substrates that included β -carotene and zeaxanthin [46]. Similarly, our data shows upregulation of *VvCCD4a* as well as *VvCCD4b* during ripening in Sauvignon blanc (Figure 2 and Additional file 3).

In grapevine, ABA, together with other phytohormones (e.g. ethylene), is thought to be responsible for the control of grape berry ripening and ABA levels typically peak at or around véraison [47]. Due to its importance, the components and regulation of the ABA biosynthetic pathway has similarly received much attention [48,49]. Wheeler et al. [50] showed that the expression pattern of two genes known to be crucial to ABA synthesis in plants (i.e. zeaxanthin epoxidase, *ZEP*; and a 9-*cis* epoxy carotenoid dioxygenase, *NCED*) could not be correlated to changes in ABA levels in grapevine berries. Sun et al. [47], however, showed that *VvNCED1* (AY337613) transcript levels correlated to the ABA content in peel, seed and pulp. These studies have illustrated the complex developmental regulation of ABA levels in a ripening berry [47,50,51]. Our results show that ABA levels increased from the initial green stage, peaking at véraison. A decrease in ABA occurs after véraison. It should also be noted that both skin and pulp (without seeds) were analysed collectively in this study. Grimplet et al. [52] have shown that more than 28% of transcripts in the berry display a more than 2-fold difference in transcript levels between the major tissue types: skin, pulp and seeds. The authors reported that most of the genes involved in carotenoid metabolism displayed a skin-specific expression pattern.

In a similar study, two *VvNCED*-encoding genes were identified in grapevine (*V. vinifera* L. cv. Shiraz): *VvNCED1* (Genbank accession number AY337613; *VvNCED3* in Additional file 1) and *VvNCED2* (Genbank accession number AY337614; *VvNCED2* in Additional file 1) [53]. The authors reported that the *VvNCED1* (*VvNCED3* in this study) and *VvNCED2* (*VvNCED2* in this study) cDNA sequences are 71.8% identical. Based on expression studies they showed that the majority of the detectable *NCED* expression in leaf tissue was *VvNCED1*-derived and that

VvNCED2 transcription was comparatively low and appears to be associated with the leaf ABA concentration. The authors hypothesised that *VvNCED1* responds to stresses (such as water loss), whereas *VvNCED2* performs more of a “house-keeping” function in leaves [53]. A study by Lund et al. [54] on Cabernet Sauvignon berries showed that *VvNCED1* expression was not significantly changed during berry ripening initiation (véraison), whereas *VvNCED2* showed upregulation in the later stages of ripening initiation. *VvNCED2* was also shown to be upregulated in maturing seeds in the same study.

From the expression analysis in Sauvignon blanc grape berry from our study (Figure 2 and Figure 3) it is clear that the three *VvNCEDs* have distinctly different expression profiles. *VvNCED2* expression decreases as berry ripening progresses; whereas *VvNCED3* expression peaks at véraison. *VvNCED1* shows low expression levels in all of the berry stages, but increases after véraison. Since it has been demonstrated that the ABA levels peak at véraison (Additional file 5) [47], the transcriptomic analysis from this study supports the findings of Sun et al. [47] that *VvNCED3* is the enzymatic isoform correlated to the content of ABA in Sauvignon blanc berries.

The role and possible interplay of the *NCED* isoforms in the different tissue types of berries, as well as other grapevine tissues/organs, requires further elucidation. This study analysed *VvNCED* expression and ABA levels in the skin and pulp collectively without the seeds. Differential expression of *VvNCEDs* has previously been reported in the skin (exocarp), pulp (mesocarp) and seed of Cabernet Sauvignon during ripening initiation (véraison) with *VvNCED2* being transcriptionally upregulated at the later stages of véraison [54].

Due to the role of carotenoids and apocarotenoids to abiotic stress (e.g. the role of the xanthophylls in light stress; and ABA in water stress) and quality factors (e.g. the apocarotenoids and flavour and aroma formation); these compounds have been extensively studied (reviewed in [55] and references within). For example, the effect of environmental conditions on carotenoid metabolic genes is well known, but typically studied via a candidate gene approach. Collectively these studies have revealed the complex nature of carotenoid regulation that can occur at multiple levels, and although relatively well studied biochemically, the transcriptional regulation of this pathway is still not well understood. In general, it is becoming increasingly clear that an integrated analysis at the molecular level is required to elucidate function and gene-to-metabolite and/or metabolite-to-metabolite interactions.

Similarly, several of the isoforms of the carotenoid metabolic genes have distinctly different expression profiles and thus one can speculate that they have distinctly different functions in the developing grape berry and/or other

grapevine organs. Further work investigating the environmental factors and relative changes in other plant metabolites present in berries at these stages will contribute to our understanding of the regulation of these genes.

From the cluster analysis in Figure 3 it seems that a number of the carotenoid metabolic genes with similar profiles are possibly co-regulated/co-responding. Analysis of the upstream promoter sequences of these gene clusters could aid in the identification of berry-specific/developmental-specific transcription factor binding sites. Although not addressed in this study, the availability of two grapevine genomic sequence makes this approach feasible.

Conclusions

Forty-two *Vitis vinifera* carotenoid metabolic pathway genes have been putatively identified and eleven have been isolated, sequenced and characterised in this study. The genes and their predicted protein sequences are highly conserved as reported in other plant studies. The grapevine genomic sequence facilitates the characterisation of gene functions and interactions, but more importantly facilitates the study of the complex frameworks between genes controlling metabolic pathways and ultimately the relationship of genes to phenotype. In a crop like grapevine, the ability to analyse the molecular “phenotype” is useful for quantifying the impact of, for example, a viticultural practice or a specific stress condition (biotic and/or abiotic).

The genes of the carotenoid metabolic pathway potentially form the basis for a number of genomic applications that include: gene-associated molecular marker developments (e.g. functional markers), biochemical characterisation of the corresponding recombinant proteins and transgenic approaches to manipulate carotenoid biosynthesis. Collectively these data form the most up-to-date pathway analysis and a baseline that will broaden our understanding of this central metabolic pathway and provides insights into the evolution of these compounds that also serve as substrates for quality impact factors (i.e. β -ionone, β -damascenone and vitispirane) and regulating phytohormones (i.e. ABA and strigolactone).

Methods

Plant material

Vitis vinifera L. cv. Pinotage leaf tissue and Sauvignon blanc berries were collected in the field and immediately flash frozen in liquid nitrogen. Berries were collected throughout the growth season (from the Stellenbosch and Elgin regions of South Africa from December through March) and flash frozen in the field in liquid nitrogen. The frozen tissue was ground in liquid nitrogen and, if not used immediately, stored at -80°C . At least three independent berry samples were collected (with $n \geq 50$ berries per sample) at three time points: at pre-véraison/green stage (Eichhorn-Lorenz (E-L)

system stage 31), at véraison (E-L stage 34) and at ripe/harvest stage (E-L stage 38) [56].

Plasmids, bacterial strains and growth conditions

Escherichia coli cultures were grown in LB media, and transformed cultures were grown in LB media supplemented with the appropriate antibiotic(s) [57]. Unless otherwise stated, all bacterial cultures were grown at 37°C . The plasmids for the functional complementation assay (i.e. pAC-85b, pAC-LYC, pAC-BETA, and pAC-ZEAX) were obtained from F. X. Cunningham (Department of Cell Biology and Molecular Genetics, University of Maryland, MD, USA) and are described in [20,21].

Isolation and manipulation of nucleic acids

All DNA fragments for cloning were separated in 1.0% (w/v) agarose TAE gels and the fragments of interest were isolated using the QIAquick Gel Extraction Kit as instructed by the supplier (Qiagen GmbH, Hilden, Germany). High molecular weight genomic DNA was isolated from fully expanded *V. vinifera* leaves as described in [58]. Total RNA from grapevine tissues was extracted according to the methods described in [59]. Unless otherwise stated, all standard methods for plasmid DNA isolation, manipulations and cloning of DNA fragments, and agarose gel electrophoresis were used as described in [57].

PCR reactions were performed using 10–50 ng of genomic DNA or cDNA as template. PCR amplifications were performed in an Applied Biosystems 2720 PCR thermal cycler (Applied Biosystems) using the following programme: an initial denaturation at 94°C for 5 min; subsequent denaturation at 94°C for 30 s; annealing at 5°C lower than the respective primer's T_m for 30 s and extension at 72°C for 1 min per kbp (refer to Additional file 6 for the respective amplicon sizes and primer T_m) for 30 cycles; with a final elongation at 72°C for 10 min.

cDNA synthesis for full-length gene isolation

cDNA was synthesised from 1 μg of DNase I-treated (Promega, Madison, WI) total RNA from Pinotage tissue samples using the Superscript III Platinum first strand synthesis system (Invitrogen) in a 20 μL reaction volume as described by the supplier. A duplicate reaction was performed without reverse transcriptase to verify the absence of genomic DNA in the RNA extractions (data not shown).

Construction of vectors

Additional file 6 lists the PCR primers used to amplify the full-length carotenoid biosynthetic/catabolic genes from cDNA. The PCR-generated fragments were gel-purified and cloned into the pGEM-T Easy[®] vector system according to the specifications of the supplier (Promega) (Additional file 7 lists the constructed vectors). Cloned PCR-amplified

products were sequenced with an ABI Prism 3100 Genetic Analyser at the Central Analytical Facility, Stellenbosch University, South Africa.

NimbleGen 12x135K arrays

Global gene expression analysis was done from grape berries harvested at three time points with three repeats per time point: (1) green stage (E-L stage 31), (2) véraison (E-L stage 34) and (3) ripe/harvest stage (E-L stage 38), using the Roche NimbleGen Grape Whole-Genome array (Madison, WI in collaboration with Dr Massimo Delladonna from the Department of Biotechnology, University of Verona, Italy). The E-L stages were determined as described in [56]. Representative berries were sampled for all three stages. The arrays were run by a commercial enterprise, MoGene (St. Louis, MO), according to the instructions and recommendations of the supplier (NimbleGen). The resulting probe intensities were background corrected and normalised using a Robust Multichip Average (RMA) [60-62] and differentially expressed genes were identified/assessed using the Limma package (<http://bioinf.wehi.edu.au/limma/>) [63]. Data was deposited to the NCBI Gene Expression Omnibus (GEO) (accession number GSE34634).

Statistical analysis

The microarray data was processed in R and background corrected and normalised with RMA [61]. The Nimblegen probe sequences were mapped to the Grapevine Genome by the use of blastn [64]. Statistical significance of differential changes in gene expression, pigment concentrations and ABA concentrations between the green, véraison and ripe/harvest developmental stages was determined by the use of the Benjamini-Hochberg method [65] as implemented in Qlucore version 2.2 (Lund, Sweden) with a q-value threshold of 0.05.

In silico analyses

The National Center for Biotechnology Information (NCBI) Entrez search and retrieval system was used to obtain nucleotide and protein sequences from the Genbank databases (<http://www.ncbi.nlm.nih.gov/Entrez/>). Alignments to sequences in the Genbank databases were performed using the relevant BLAST algorithm (<http://www.ncbi.nlm.nih.gov/BLAST/>) [64]. Nucleotide sequences were aligned using ClustalX [66] and Dialign [67-69]. Amino acid sequences were aligned with MUSCLE [70]. Molecular phylogenetic analysis was performed with PhyML [17] and visualised using Treeview [71] and Figtree (<http://tree.bio.ed.ac.uk/software/figtree/>). Comparative genomic analyses (gene structure prediction, homologue/orthologue retrieval, and phylogenetic analyses) were performed via Plaza (<http://bioinformatics.psb.ugent.be/plaza/>) [4,5].

Intron- and exon splice sites in the genomic sequences were determined by aligning the cDNA and genomic

sequences (Spidey: <http://www.ncbi.nlm.nih.gov/spidey/>) [72]. The putative sub-cellular localisation of protein sequences were predicted using ProtComp (<http://www.softberry.com/berry.phtml>). *V. vinifera* expressed sequence tags (ESTs) were retrieved from The Institute for Genomic Research (TIGR) Grape Gene Index (<http://compbio.dfci.harvard.edu/tgi/>) or NCBI. The *V. vinifera* genomic sequences were retrieved from NCBI, Genoscope (PN40042 genome sequence: <http://www.cns.fr/externe/GenomeBrowser/Vitis/>) and IASMA/FEM (ENTAV115 genome sequence: <http://genomics.research.iasma.it>).

Identification of putative carotenoid and apocarotenoid biosynthetic and catabolic genes

Arabidopsis thaliana isoprenoid pathways and respective genes from AtIPD (<http://www.atipd.ethz.ch/>) [16] were used to identify putative *V. vinifera* orthologues via PLAZA (<http://bioinformatics.psb.ugent.be/plaza/>). Similarly, the annotations relating specifically to carotenoid biosynthesis were obtained from the VitisNet database (section 1.9: "Biosynthesis of Secondary Metabolites: Carotenoid Biosynthesis" <http://www.sdstate.edu/aes/vitis/pathways.cfm>) [73] and the corresponding accessions retrieved from PLAZA. The carotenoid and apocarotenoid biosynthetic and catabolic pathway used for Mapman [74] visualisation of expression and metabolite data was constructed using pathway information obtained from KEGG (map00906), AtIPD and VitisNet. Unique Roche Nimblegen probes were identified for the 42 accessions listed in Additional file 1. For simplicity, the nomenclature of the identified *V. vinifera* orthologues are based on sequence similarity to the closest *A. thaliana* orthologues, but numbered in ascending order relative to their chromosomal localization on the ENTAV115 genome sequence [1].

Positioning of the carotenoid metabolic genes in the grapevine genome

The carotenoid metabolic genes listed in Additional file 1 were positioned on the genome sequence assembly described in [1]. The carotenoid biosynthetic/catabolic genes were mapped to the respective linkage groups of the heterozygous ENTAV115 genome sequence as position on the assembled linkage groups (in bp) as well as relative to representative markers of the genetic map described in [18].

Bacterial functional complementation: Pigment extraction and HPLC analysis

Escherichia coli cultures containing the plasmids expressing carotenoid biosynthetic genes from *Erwinia herbicola* were used for the functional complementation assay as previously described in [20]. Briefly, for functional complementation of enzymes acting on lycopene an *E. coli* culture accumulating lycopene (via pAC-LYC), was transformed

with a plasmid carrying the putative lycopene ϵ -cyclase encoding gene (*VvLECY1* from pGEM-cLECY1) or a plasmid carrying the putative lycopene β -cyclase encoding gene (*VvLBCY2* from pGEM-cLBCY2). For functional complementation of phytoene synthase (PSY) an *E. coli* culture accumulating phytoene (via pAC-85b), was transformed with a plasmid carrying the putative PSY (*VvPSY1* from pGEM-cPSY1). Similarly, a β -carotene accumulating strain (via pAC-BETA) was transformed with a plasmid carrying the putative β -carotene hydroxylase encoding gene (*VvBCH1* from pGEM-cBCH1). The functionality of the carotenoid genes was determined by analysing the pigment content of the cultures by reverse phase (RP)-HPLC. Care was taken to avoid light and air exposure to the cells during incubation and the subsequently isolated pigments. Pigments were extracted from 5 mL of an overnight culture by harvesting the cells by centrifugation ($4,000 \times g$ for 5 min at room temperature). The media was decanted and the cells were resuspended in sterile water in order to remove residual media components, and recovered by centrifugation (as above). The cells were vortexed briefly to loosen the pellet, and resuspended in 1 mL acetone. The extraction was placed at 65°C for 10 min with subsequent centrifugation at $13,000 \times g$ for 10 min, and the supernatant containing the pigments was aspirated into a clean 2 mL microfuge tube. The extracted pigments were concentrated by centrifugation in a DNA110 Speed Vac concentrator (Savant Instruments, Inc., Farmingdale, NY). The recovered pigments were resuspended in ethyl acetate:methanol (1:4) and separated by RP-HPLC as described in [75].

Extraction and HPLC analysis of carotenoids and chlorophylls in grapevine berries

Carotenoids and chlorophylls were extracted from grapevine berries and analysed by RP-HPLC as described in [36].

Extraction and UPLC-MS/MS analysis of abscisic acid

Extraction of ABA from grapevine berries was adapted from Feurtado et al. [76]. Seeds were removed from berries, prior to freezing in liquid nitrogen and homogenisation in a bead mill. To extract the samples, 1 mL extraction solvent (80% isopropanol/1% acetic acid/19% water) and glass beads were added to 50 mg tissue. The samples were shaken at 200 rpm for 30 min at 4°C before centrifuging. Following collection of the supernatant, pellets were rinsed with 0.5 mL of extraction solvent. The combined supernatants were lyophilised, then reconstituted in 100 μL of acidified methanol and adjusted to 1 mL in acidified water. The reconstituted samples were passed through equilibrated 3 cm^3 Oasis hydrophilic lipophilic balance (HLB) solid-phase extraction cartridges (Waters, Milford, MA, USA). After washing with 5% methanol, analytes were eluted with 80% acidified methanol water and lyophilised. Lyophilisates were dissolved in

200 μL 15% acetonitrile/0.07% acetic acid and clarified by centrifugation prior to transfer to UPLC-MS/MS analysis. ABA was quantified using a standard curve.

UPLC-MS/MS analyses were performed on a Waters Xevo triple quadrupole mass spectrometer coupled to a Waters Acquity UPLC. Separation was achieved on a Waters UPLC BEH Phenyl column (2.1x100 mm, 1.7 μm particle size). A 0.1% formic acid to acetonitrile gradient was used. The gradient was increased from 15% acetonitrile to 70% after 180 s and 95% after 190 s and returned to initial composition for a total run time of 5 min. The injection volume was 10 μL and a column temperature of 40°C was maintained. Solvents were LCMS grade and supplied by Sigma-Aldrich. Data acquisition was in multiple reaction monitoring mode (MRM). The precursor/product ions monitored were $263 > 153$ and $263 > 219.2$ (cone voltage 20 V, collision energy 10 V). The source temperature was 100°C , desolvation temperature was 400°C and desolvation gas of 600 L/h was applied, the remainder of the MS settings were optimised for the best possible sensitivity.

Additional files

Additional file 1: Gene names, relevant accession numbers and putative gene assignments for the predicted genes encoding carotenoid biosynthetic and catabolic enzymes. Gene sequences isolated in this study are underlined.

Additional file 2: Chromosomal localisation of the carotenoid metabolic genes. The 37 of the 42 carotenoid metabolic pathway members are depicted on the heterozygous ENTAV115 *V. vinifera* L. cv Pinot noir genome sequence assembly together with the closest genetic markers and with other well distributed markers along the chromosomes as taken from Troggio et al. [18]. The genes from Additional file 2: Table SM1 are in italic (red); isolated genes are in bold italic (red). Relative positions on each chromosome in bp are indicated on the left of each linkage group (LG).

Additional file 3: Expression of the carotenoid biosynthetic/catabolic genes at the three berry developmental stages. Average expression values of the carotenoid metabolic genes at the three stages of berry development (E-L stage 31, -34 and -38). Average expression values from the Nimblegen whole-genome grape arrays are shown with their standard deviations ($n = 3$). Genes in bold indicate significant differential expression (q -value ≤ 0.05 ; $n = 3$) in the green stage (E-L stage 31) versus véraison stage (E-L stage 34)^a; véraison stage (E-L stage 34) versus ripe/harvest stage (E-L stage 38)^b; green stage (E-L stage 31) versus ripe/harvest stage (E-L stage 38)^c.

Additional file 4: Photosynthetic pigments concentrations and ratios in three berry developmental stages. Photosynthetic pigments extracted from green, véraison and ripe/harvest stage berries were separated by HPLC and quantified relative to authentic standards. Average carotenoid and chlorophyll concentrations in berries are shown in ng/mg FW, with the respective standard deviations ($n = 3$). Pigments in bold indicate significant differences (q -value ≤ 0.05 ; $n = 3$) in pigment concentrations in the green stage (E-L stage 31) versus véraison stage (E-L stage 34)^a; véraison stage (E-L stage 34) versus ripe/harvest stage (E-L stage 38)^b; green stage (E-L stage 31) versus ripe/harvest stage (E-L stage 38)^c.

Additional file 5: Abscisic acid concentration in the three berry developmental stages. Abscisic acid was extracted from the three stages of berry development (E-L stage 31, -34 and -38) and analysed using UPLC MS/MS and quantified relative to an authentic standard. Abscisic acid concentrations in berries are shown in ng/g FW, with the

respective standard deviations ($n = 3$). Significant differences in ABA concentrations (q -value ≤ 0.05 ; $n = 3$) in the green stage (E-L stage 31) versus véraison stage (E-L stage 34)^a; véraison stage (E-L stage 34) versus ripe/harvest stage (E-L stage 38)^b; green stage (E-L stage 31) versus ripe/harvest stage (E-L stage 38)^c.

Additional file 6: PCR primers used in this study. The table lists the primers used, the respective sequences, melting temperatures (T_m 's) and a brief description of the amplified product. Where applicable, restriction sites incorporated to facilitate cloning are indicated in lowercase letters in the respective primer sequence.

Additional file 7: Plasmids and constructs used in this study. Plasmids constructed in this study were named according to the carotenoid biosynthetic/catabolic gene they contained. The primers used and the size of the PCR product cloned are listed in the respective columns.

Competing interests

The authors declare that they have no competing interests.

Authors' contributions

MV and PY conceptualised the study. PY, EA, DJ and MV were involved in the experimental layout. PY, JL, EA and DJ did the field sampling. EA processed the samples for RNA isolation for subsequent microarray analysis. PY and JL processed the samples for pigment extractions and performed the HPLC analysis. PY, JL and DJ created the pathway visualisation. DJ provided statistical and bioinformatics support for the study. PY isolated and cloned the genes of interest and performed the bacterial functional complementation assay. CM and RV performed the mapping of the identified genes to the respective linkage groups. PY and MV drafted the initial manuscript. All authors contributed to discussion of the results, reviewing of the manuscript and approved the final manuscript.

Acknowledgements

The authors wish to thank Susanna Dalsant for technical assistance during gene isolation of *WvPDS1*; Dr Alessandro Cestaro for bioinformatic assistance; Dr Francis Cunningham for providing the carotenoid producing strains for the functional complementation assay; Dr Massimo Delladonna for the MTA for the Roche NimbleGen Grape Whole-Genome; Dr Alain Deloire and Zelmar Coetzee for viticultural assistance and berry physiological data; Carin Basson, Mukani Moyo and Dr Marietjie Stander for the ABA analysis in grapevine berries.

This work was supported by grants from the Wine Industry Network for Expertise and Technology (Winetech), South African Table Grape Industry (SATI), Technology and Human Resources for Industry Programme (THRIP), National Research Foundation (NRF), Grape Research Coordination Network (GRCN) National Science Foundation (NSF, grant no. DBI 0741876); Carl Tryggers Stiftelse för Vetenskaplig Forskning; South Africa-Italy Programme on Research Co-operation (Project no. AEB#4).

Author details

¹Institute for Wine Biotechnology, Department of Viticulture and Oenology, Stellenbosch University, Matieland 7602, South Africa. ²Department of Plant Protection Biology, Swedish University of Agricultural Sciences, SE-230 53, Alnarp, Sweden. ³Genomics and Biology of Fruit Crops Department, IASMA Research and Innovation Centre, Fondazione Edmund Mach Via E. Mach 1, San Michele all'Adige 38010, TN, Italy.

Received: 15 December 2011 Accepted: 3 May 2012

Published: 15 June 2012

References

1. Velasco R, Zharkikh A, Troggio M, Cartwright DA, Cestaro A, Pruss D, Pindo M, FitzGerald LM, Vezzulli S, Reid J, et al: A high quality draft consensus sequence of the genome of a heterozygous grapevine variety. *PLoS One* 2007, **2**:e1326.
2. Jaillon O, Aury JM, Noel B, Policriti A, Clepet C, Casagrande A, Choisne N, Aubourg S, Vitulo N, Jubin C, et al: The grapevine genome sequence suggests ancestral hexaploidization in major angiosperm phyla. *Nature* 2007, **449**:463–467.
3. Martinez-Zapater JM, Carmona M, Diaz-Riquelme J, Fernandez L, Lijavetzky D: Grapevine genetics after the genome sequence: Challenges and limitations. *Aust J Grape and Wine Res* 2010, **16**:33–46.
4. Proost S, Van Bel M, Sterck L, Billiau K, Van Parys T, Van de Peer Y, Vandepoele K: PLAZA: A comparative genomics resource to study gene and genome evolution in plants. *The Plant Cell Online* 2009, **21**:3718–3731.
5. Van Bel M, Proost S, Wischnitzki E, Movahedi S, Scheerlinck C, Van de Peer Y, Vandepoele K: Dissecting plant genomes with the plaza comparative genomics platform. *Plant Physiol* 2012, **158**:590–600.
6. Cunningham FX, Gantt E: Genes and enzymes of carotenoid biosynthesis in plants. *Ann Rev Plant Physiol Plant Mol Biol* 1998, **49**:557–583.
7. Beveridge CA, Kyoizuka J: New genes in the strigolactone-related shoot branching pathway. *Curr Opin Plant Biol* 2010, **13**:34–39.
8. Dun EA, Brewer PB, Beveridge CA: Strigolactones: discovery of the elusive shoot branching hormone. *Trends Plant Sci* 2009, **14**:364–372.
9. Mendes-Pinto MM: Carotenoid breakdown products the norisoprenoids-in wine aroma. *Arch Biochem Biophys* 2009, **483**:236–245.
10. Castenmiller JJM, West CE: Bioavailability and bioconversion of carotenoids. *Annu Rev Nutr* 1998, **18**:19–38.
11. Yeum KJ, Russell RM: Carotenoid bioavailability and bioconversion. *Annu Rev Nutr* 2002, **22**:483–504.
12. Shewmaker CK, Sheehy JA, Daley M, Colburn S, Ke DY: Seed-specific overexpression of phytoene synthase: increase in carotenoids and other metabolic effects. *Plant J* 1999, **20**:401–412.
13. D'Ambrosio C, Giorio G, Marino I, Merendino A, Petrozsa A, Salfi L, Stigliani AL, Cellini F: Virtually complete conversion of lycopene into β -carotene in fruits of tomato plants transformed with the tomato lycopene β -cyclase (*tlcy-b*) cDNA. *Plant Sci* 2004, **166**:207–214.
14. Romer S, Lnbeck J, Kauder F, Steiger S, Adomat C, Sandmann G: Genetic engineering of a zeaxanthin-rich potato by antisense inactivation and co-suppression of carotenoid epoxidation. *Metab Eng* 2002, **4**:263–272.
15. Paine JA, Shipton CA, Chaggar S, Howells RM, Kennedy MJ, Vernon G, Wright SY, Hinchliffe E, Adams JL, Silverstone AL, et al: Improving the nutritional value of Golden Rice through increased pro-vitamin A content. *Nat Biotechnol* 2005, **23**:482–487.
16. Vranova E, Hirsch-Hoffmann M, Gruissem W: AtIPD: A curated database of *Arabidopsis* isoprenoid pathway models and genes for isoprenoid network analysis. *Plant Physiol* 2011, **156**:1655–1660.
17. Guindon Sp, Lethiec F, Duroux P, Gascuel O: PHYML Online—a web server for fast maximum likelihood-based phylogenetic inference. *Nucleic Acids Res* 2005, **33**:W557–W559.
18. Troggio M, Malacarne G, Coppola G, Segala C, Cartwright DA, Pindo M, Stefanini M, Mank R, Moroldo M, Morgante M, et al: A dense single-nucleotide polymorphism-based genetic linkage map of grapevine (*Vitis vinifera* L.) anchoring pinot noir bacterial artificial chromosome contigs. *Genetics* 2007, **176**:2637–2650.
19. Softberry ProtComp 9.0: Predict the sub-cellular localization for plant proteins. Retrieved May 2011 from the Softberry website: www.softberry.com.
20. Cunningham FX, Sun ZR, Chamovitz D, Hirschberg J, Gantt E: Molecular structure and enzymatic function of lycopene cyclase from the cyanobacterium *Synechococcus* sp strain PCC7942. *Plant Cell* 1994, **6**:1107–1121.
21. Cunningham FX, Chamovitz D, Misawa N, Gantt E, Hirschberg J: Cloning and functional expression in *Escherichia-coli* of a cyanobacterial gene for lycopene cyclase, the enzyme that catalyzes the biosynthesis of β -carotene. *FEBS Lett* 1993, **328**:130–138.
22. Ohmiya A: Carotenoid cleavage dioxygenases and their apocarotenoid products in plants. *Plant Biotechnology* 2009, **26**:351–358.
23. Walter MH, Floss DS, Strack D: Apocarotenoids: hormones, mycorrhizal metabolites and aroma volatiles. *Planta* 2010, **232**:1–17.
24. Mathieu S, Terrier N, Procureur J, Bigey F, Gunata Z: A carotenoid cleavage dioxygenase from *Vitis vinifera* L.: functional characterization and expression during grape berry development in relation to C-13-norisoprenoid accumulation. *J Exp Bot* 2005, **56**:2721–2731.
25. Battilana J, Costantini L, Emanuelli F, Sevini F, Segala C, Moser S, Velasco R, Versini G, Grando MS: The 1-deoxy-d-xylulose 5-phosphate synthase gene co-localizes with a major QTL affecting monoterpene content in grapevine. *Theor Appl Genet* 2009, **118**:653–669.
26. Matthews PD, Luo RB, Wurtzel ET: Maize phytoene desaturase and ζ -carotene desaturase catalyse a poly-Z desaturation pathway: implications for genetic engineering of carotenoid content among cereal crops. *J Exp Bot* 2003, **54**:2215–2230.

27. Ahrazem O, Trapero A, Gomez MD, Rubio-Moraga A, Gomez-Gomez L: **Genomic analysis and gene structure of the plant carotenoid dioxygenase 4 family: A deeper study in *Crocus sativus* and its allies.** *Genomics* 2010, **96**:239–250.
28. Boue S, Letunic I, Bork P: **Alternative splicing and evolution.** *Bioessays* 2003, **25**:1031–1034.
29. Razungles AJ, Babic I, Sapis JC, Bayonove CL: **Particular behavior of epoxy xanthophylls during veraison and maturation of grape.** *J Agric Food Chem* 1996, **44**:3821–3825.
30. Baumes R, Wirth J, Bureau S, Gunata Y, Razungles A: **Biogenesis of C-13-norisoprenoid compounds: experiments supportive for an apocarotenoid pathway in grapevines.** *Anal Chim Acta* 2002, **458**:3–14.
31. Deluc L, Bogs J, Walker AR, Ferrier T, Decendit A, Merillon JM, Robinson SP, Barrieu F: **The transcription factor VvMYB5b contributes to the regulation of anthocyanin and proanthocyanidin biosynthesis in developing grape berries.** *Plant Physiol* 2008, **147**:2041–2053.
32. Oliveira C, Ferreira ACS, Pinto MM, Hogg T, Alves F, de Pinho PG: **Carotenoid compounds in grapes and their relationship to plant water status.** *J Agric Food Chem* 2003, **51**:5967–5971.
33. Sefton MA, Skouroumounis GK, Massywestropp RA, Williams PJ: **Norisoprenoids in *Vitis vinifera* white wine grapes and the identification of a precursor of damascenone in these fruits.** *Aust J Chem* 1989, **42**:2071–2084.
34. Crupi P, Coletta A, Antonacci D: **Analysis of carotenoids in grapes to predict norisoprenoid varietal aroma of wines from Apulia.** *J Agric Food Chem* 2010, **58**:9647–9656.
35. Kamffer Z, Bindon KA, Oberholster A: **Optimization of a method for the extraction and quantification of carotenoids and chlorophylls during ripening in grape berries (*Vitis vinifera* cv. Merlot).** *J Agric Food Chem* 2010, **58**:6578–6586.
36. Lashbrooke JG, Young PR, Strever AE, Stander C, Vivier MA: **The development of a method for the extraction of carotenoids and chlorophylls from grapevine leaves and berries for HPLC profiling.** *Aust J Grape and Wine Res* 2010, **16**:349–360.
37. Deluc L, Quilici D, Decendit A, Grimplet J, Wheatley M, Schlauch K, Merillon JM, Cushman J, Cramer G: **Water deficit alters differentially metabolic pathways affecting important flavor and quality traits in grape berries of Cabernet Sauvignon and Chardonnay.** *BMC Genomics* 2009, **10**:212.
38. Zamboni A, Di Carli M, Guzzo F, Stocchero M, Zenoni S, Ferrarini A, Tononi P, Toffali K, Desiderio A, Lilley KS, et al: **Identification of putative stage-specific grapevine berry biomarkers and omics data integration into networks.** *Plant Physiol* 2010, **154**:1439–1459.
39. Pandey R, Farmahan H: **Changes in the rate of photosynthesis and respiration in leaves and berries of *Vitis vinifera* grapevines at various stages of berry development.** *Vitis* 1977, **16**:106–111.
40. Lebon G, Brun O, Magné C, Clément C: **Photosynthesis of the grapevine (*Vitis vinifera*) inflorescence.** *Tree Physiol* 2005, **25**:633–639.
41. Garcia-Plazaola JL, Matsubara S, Osmond CB: **Review: The lutein epoxide cycle in higher plants: its relationships to other xanthophyll cycles and possible functions.** *Funct Plant Biol* 2007, **34**:759–773.
42. Esteban R, Becerril JM, Garcia-Plazaola JL: **Lutein epoxide cycle, more than just a forest tale.** *Plant Signal Behav* 2009, **4**:342–344.
43. Bouvier F, Dharlingue A, Huguency P, Marin E, Marion-Poll A, Camara B: **Xanthophyll biosynthesis - Cloning, expression, functional reconstitution, and regulation of β -cyclohexenyl carotenoid epoxidase from pepper (*Capsicum annuum*).** *J Biol Chem* 1996, **271**:28861–28867.
44. Matsubara S, Morosinotto T, Osmond CB, Bassi R: **Short- and long-term operation of the lutein-epoxide cycle in light-harvesting antenna complexes.** *Plant Physiol* 2007, **144**:926–941.
45. Fortes AM, Agudelo-Romero P, Silva MS, Ali K, Sousa L, Maltese F, Choi YH, Grimplet J, Martinez-Zapater JM, Verpoorte R, et al: **Transcript and metabolite analysis in Trincadeira cultivar reveals novel information regarding the dynamics of grape ripening.** *BMC Plant Biol* 2011, **11**:149–183.
46. Guillaumie S, Fouquet R, Kappel C, Camps C, Terrier N, Moncomble D, Dunlevy J, Davies C, Boss P, Delrot S: **Transcriptional analysis of late ripening stages of grapevine berry.** *BMC Plant Biol* 2011, **11**:165–192.
47. Sun LA, Zhang M, Ren J, Qi JX, Zhang GJ, Leng P: **Reciprocity between abscisic acid and ethylene at the onset of berry ripening and after harvest.** *BMC Plant Biol* 2010, **10**:257–268.
48. Lee SH, Seo MJ, Riu M, Cotta JP, Block DE, Dokoozlian NK, Ebeler SE: **Vine microclimate and norisoprenoid concentration in Cabernet Sauvignon grapes and wines.** *Am J Enol Vitic* 2007, **58**:291–301.
49. Liotenberg S, North H, Marion-Poll A: **Molecular biology and regulation of abscisic acid biosynthesis in plants.** *Plant Physiol Biochem* 1999, **37**:341–350.
50. Wheeler S, Loveys B, Ford C, Davies C: **The relationship between the expression of abscisic acid biosynthesis genes, accumulation of abscisic acid and the promotion of *Vitis vinifera* L. berry ripening by abscisic acid.** *Aust J Grape and Wine Res* 2009, **15**:195–204.
51. Zhang M, Leng P, Zhang G, Li X: **Cloning and functional analysis of 9-cis-epoxycarotenoid dioxygenase (*NCED*) genes encoding a key enzyme during abscisic acid biosynthesis from peach and grape fruits.** *J Plant Physiol* 2009, **166**:1241–1252.
52. Grimplet J, Deluc L, Tillett R, Wheatley M, Schlauch K, Cramer G, Cushman J: **Tissue-specific mRNA expression profiling in grape berry tissues.** *BMC Genomics* 2007, **8**:187.
53. Soar CJ, Speirs J, Maffei SM, Loveys BR: **Gradients in stomatal conductance, xylem sap ABA and bulk leaf ABA along canes of *Vitis vinifera* cv. Shiraz: molecular and physiological studies investigating their source.** *Funct Plant Biol* 2004, **31**:659–669.
54. Lund ST, Peng FY, Nayar T, Reid KE, Schlosser J: **Gene expression analyses in individual grape (*Vitis vinifera* L.) berries during ripening initiation reveal that pigmentation intensity is a valid indicator of developmental staging within the cluster.** *Plant Mol Biol* 2008, **68**:301–315.
55. Walter MW, Strack D: **Carotenoids and their cleavage products: Biosynthesis and functions.** *Nat Prod Rep* 2011, **28**:663–692.
56. Coombe BG: **Growth stages of the grapevine: Adoption of a system for identifying grapevine growth stages.** *Aust J Grape and Wine Res* 1995, **1**:104–110.
57. Maniatis T: *In Molecular cloning: A laboratory manual/T.* Edited by Maniatis EF, FJ Sambrook. Cold Spring Harbor, N.Y.: Cold Spring Harbor Laboratory; 1982.
58. Steenkamp J, Wild I, Lourens A, van Helden P: **Improved method for DNA extraction from *Vitis vinifera*.** *Am J Enol Vitic* 1994, **45**:102–106.
59. Reid K, Olsson N, Schlosser J, Peng F, Lund S: **An optimized grapevine RNA isolation procedure and statistical determination of reference genes for real-time RT-PCR during berry development.** *BMC Plant Biol* 2006, **6**:27.
60. Bolstad BM, Irizarry RA, Astrand M, Speed TP: **A comparison of normalization methods for high density oligonucleotide array data based on variance and bias.** *Bioinformatics* 2003, **19**:185–193.
61. Irizarry RA, Bolstad BM, Collin F, Cope LM, Hobbs B, Speed TP: **Summaries of Affymetrix GeneChip probe level data.** *Nucleic Acids Res* 2003, **31**:e15.
62. Irizarry RA, Hobbs B, Collin F, Beazer-Barclay YD, Antonellis KJ, Scherf U, Speed TP: **Exploration, normalization, and summaries of high density oligonucleotide array probe level data.** *Biostatistics* 2003, **4**:249–264.
63. Smyth GK, Michaud J, Scott HS: **Use of within-array replicate spots for assessing differential expression in microarray experiments.** *Bioinformatics* 2005, **21**:2067–2075.
64. Altschul SF, Gish W, Miller W, Myers EW, Lipman DJ: **Basic local alignment search tool.** *J Mol Biol* 1990, **215**:403–410.
65. Benjamini Y, Hochberg Y: **Controlling the False Discovery Rate - A practical and powerful approach to multiple testing.** *J Royal Stat Soc Series B-Methodol* 1995, **57**:289–300.
66. Thompson JD, Higgins DG, Gibson TJ: **Clustal-W - Improving the sensitivity of progressive multiple sequence alignment through sequence weighting, position-specific gap penalties and weight matrix choice.** *Nucleic Acids Res* 1994, **22**:4673–4680.
67. Morgenstern B: **DIALIGN: multiple DNA and protein sequence alignment at BiBiServ.** *Nucleic Acids Res* 2004, **32**:W33–W36.
68. Morgenstern B: **The DIALIGN multiple alignment program: Recent developments and applications.** *Cladistics-the Int J Willi Hennig Soc* 2004, **20**:89–90.
69. Morgenstern B, Frech K, Dress A, Werner T: **DIALIGN: Finding local similarities by multiple sequence alignment.** *Bioinformatics* 1998, **14**:290–294.
70. Edgar RC: **MUSCLE: multiple sequence alignment with high accuracy and high throughput.** *Nucleic Acids Res* 2004, **32**:1792–1797.
71. Page RDM: **TreeView: An application to display phylogenetic trees on personal computers.** *Comput Appl Biosci* 1996, **12**:357–358.
72. Wheelan SJ, Church DM, Ostell JM: **Spidey: A tool for mRNA-to-genomic alignments.** *Genome Res* 2001, **11**:1952–1957.

73. Grimplet J, Cramer GR, Dickerson JA, Mathiason K, Van Hemert J, Fennell AY: **VitisNet: "Omics" integration through grapevine molecular networks.** *PLoS One* 2009, **4**:e8365.
74. Usadel B, Poree F, Nagel A, Lohse M, Czedik-Eysenberg A, Stitt M: **A guide to using MapMan to visualize and compare Omics data in plants: a case study in the crop species, Maize.** *Plant Cell Environ* 2009, **32**:1211–1229.
75. Taylor KL, Brackenridge AE, Vivier MA, Oberholster A: **High-performance liquid chromatography profiling of the major carotenoids in *Arabidopsis thaliana* leaf tissue.** *J Chromatogr A* 2006, **1121**:83–91.
76. Feurtado JA, Ambrose SJ, Cutler AJ, Ross ARS, Abrams SR, Kermode AR: **Dormancy termination of western white pine (*Pinus monticola* Dougl. Ex D. Don) seeds is associated with changes in abscisic acid metabolism.** *Planta* 2004, **218**:630–639.

doi:10.1186/1471-2164-13-243

Cite this article as: Young et al.: The genes and enzymes of the carotenoid metabolic pathway in *Vitis vinifera* L.. *BMC Genomics* 2012 **13**:243.

Submit your next manuscript to BioMed Central and take full advantage of:

- Convenient online submission
- Thorough peer review
- No space constraints or color figure charges
- Immediate publication on acceptance
- Inclusion in PubMed, CAS, Scopus and Google Scholar
- Research which is freely available for redistribution

Submit your manuscript at
www.biomedcentral.com/submit

