



REVIEW

Oocyte Maturation and Development [version 1; referees: 2 approved]

Marie-Hélène Verlhac, Marie-Emilie Terret

CIRB, Collège de France, Paris, France

v1 **First published:** 09 Mar 2016, 5(F1000 Faculty Rev):309 (doi: [10.12688/f1000research.7892.1](https://doi.org/10.12688/f1000research.7892.1))

Latest published: 09 Mar 2016, 5(F1000 Faculty Rev):309 (doi: [10.12688/f1000research.7892.1](https://doi.org/10.12688/f1000research.7892.1))

Abstract

Sexual reproduction is essential for many organisms to propagate themselves. It requires the formation of haploid female and male gametes: oocytes and sperms. These specialized cells are generated through meiosis, a particular type of cell division that produces cells with recombined genomes that differ from their parental origin. In this review, we highlight the end process of female meiosis, the divisions per se, and how they can give rise to a functional female gamete preparing itself for the ensuing zygotic development. In particular, we discuss why such an essential process in the propagation of species is so poorly controlled, producing a strong percentage of abnormal female gametes in the end. Eventually, we examine aspects related to the lack of centrosomes in female oocytes, the asymmetry in size of the mammalian oocyte upon division, and in mammals the direct consequences of these long-lived cells in the ovary.



This article is included in the **F1000 Faculty Reviews** channel.

Open Peer Review

Referee Status:

	Invited Referees	
	1	2
version 1 published 09 Mar 2016		

F1000 Faculty Reviews are commissioned from members of the prestigious **F1000 Faculty**. In order to make these reviews as comprehensive and accessible as possible, peer review takes place before publication; the referees are listed below, but their reports are not formally published.

- Keith Jones**, University of Southampton UK
- John Carroll**, Monash University Australia

Discuss this article

Comments (0)

Corresponding author: Marie-Hélène Verlhac (marie-helene.verlhac@college-de-france.fr)

How to cite this article: Verlhac MH and Terret ME. **Oocyte Maturation and Development [version 1; referees: 2 approved]** *F1000Research* 2016, 5(F1000 Faculty Rev):309 (doi: [10.12688/f1000research.7892.1](https://doi.org/10.12688/f1000research.7892.1))

Copyright: © 2016 Verlhac MH and Terret ME. This is an open access article distributed under the terms of the **Creative Commons Attribution Licence**, which permits unrestricted use, distribution, and reproduction in any medium, provided the original work is properly cited.

Grant information: The author(s) declared that no grants were involved in supporting this work.

Competing interests: The authors declare that they have no competing interests.

First published: 09 Mar 2016, 5(F1000 Faculty Rev):309 (doi: [10.12688/f1000research.7892.1](https://doi.org/10.12688/f1000research.7892.1))

Introduction: definitions

All oocytes undergo induced arrest at the dictyate stage of prophase I during meiosis in the ovary. This arrest takes place after chromosome pairing and crossing-over formation between parental chromosomes. It can last months in mice and decades in humans. Upon hormonal surge, oocytes will exit the prophase I arrest and resume meiosis. All stages from meiosis resumption, starting with nuclear envelope breakdown (NEBD) until the next arrest where oocytes are fertilized, belong to the meiotic maturation process (Figure 1). This process terminates meiosis, allowing the gamete to go through two successive rounds of extremely asymmetric divisions in size. Between these divisions, there is no intervening DNA replication, truly rendering the gamete haploid after, at, or before the second meiotic arrest at fertilization. Indeed, depending on the species, this second arrest will take place at different cell cycle stages: coincident with meiosis resumption at NEBD in nematodes, in metaphase I in *Drosophila*, in metaphase II for most vertebrates, or after the end of the second meiotic division in starfish oocytes.

There are three essential features that we would like to highlight in this review: (1) meiotic divisions take place in the absence of centrosomes in most animals; (2) these divisions are highly asymmetric in size to produce large oocytes; and (3) in mammals, oocytes display an extreme longevity in the ovary.

We would like to propose that these three features, among other things, predispose oocytes to errors in chromosome segregation. In mammals, this aspect has been particularly well studied, especially in human oocytes, which present a basal rate of errors close to 20% in women younger than 35 years of age and which can be as high as 60% in older women¹⁻³. Indeed, it remains puzzling that given the extreme parental investment in juvenile care in many species, such little attention is being paid to oocyte ploidy, as if errors in chromosome segregation were part of a selection process for gamete fitness.

Acentriolar divisions

Centrosomes, consisting of a pair of centrioles surrounded by a cloud of pericentriolar material (PCM), are the major centers for microtubule assembly (microtubule-organizing center). Most oocytes lose their centrioles during oogenesis; if not, like in starfish, they are progressively eliminated and inactivated during meiotic divisions⁴⁻⁸. Even though centrosomes are not strictly required to segregate chromosomes (as shown in flies, planarians, or mice⁹⁻¹²), they contribute to the coordination of spindle assembly and increase its robustness. The immediate consequence of centrosome loss is that meiotic spindles are devoid of astral microtubules and so lack the main connector between the spindle poles and the cell cortex (Figure 2). Hence, spindle positioning cannot rely on astral

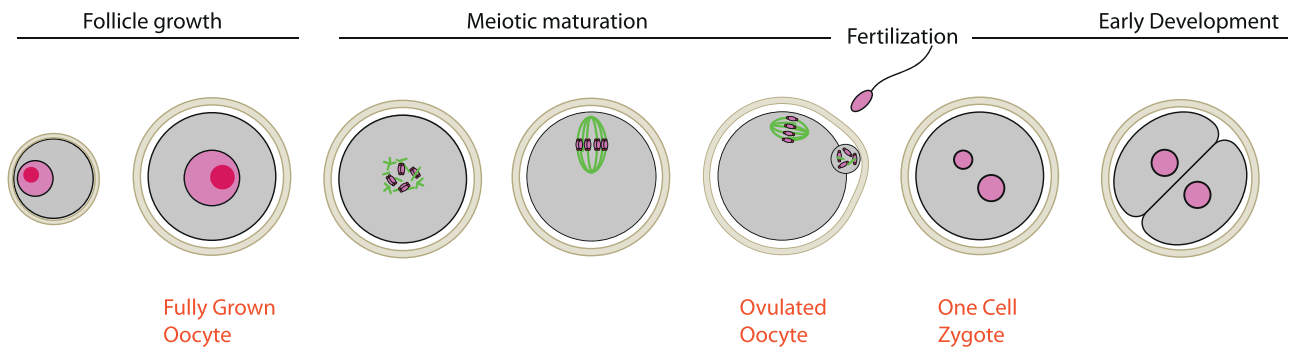


Figure 1. Meiotic maturation and first stages of embryo development in mammals. Meiotic maturation starts with nuclear envelope breakdown (NEBD) and is followed by the first meiotic division where bivalents are separated, the first polar body is extruded and then, in vertebrates, arrest in metaphase of the second meiotic division (MII stage) occurs. The oocyte is ovulated at the MII stage. Sister chromatids will be segregated after fertilization. Zygotic development follows fertilization. Oocytes (in gray) are surrounded by a protective glycoprotein layer, the zona pellucida (beige). DNA is in pink, microtubules in green.

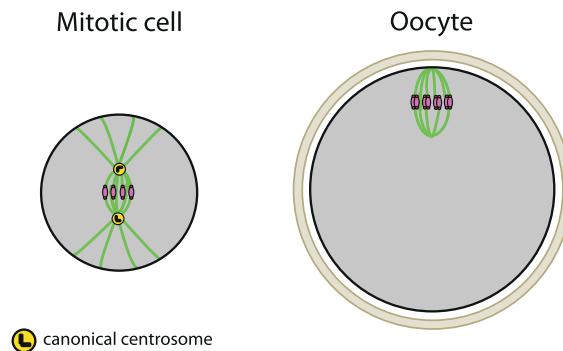


Figure 2. Oocytes assemble and position their spindle in the absence of centrosomes. Cells are in gray, and oocytes are surrounded by a protective glycoprotein layer, the zona pellucida (beige). DNA is in pink, microtubules in green, centrioles in black, and pericentriolar material (PCM) in yellow.

microtubules as it happens in most somatic cells^{13–16}. Furthermore, centrosome-nucleated microtubules cannot capture chromosomes¹⁴. In mitotic cells, duplicated centrosomes are positioned on opposite sides of the nucleus such that in prometaphase the spindle axis is already set^{17–20}. On the contrary, meiotic spindle bipolarity is not predefined by the position of the two centrosomes. Instead, during meiosis I, spindle bipolarity is progressively established and this can take about 40 minutes in *Drosophila*, 3 hours in mouse, and up to 6.5 hours in human oocytes^{21–25}. Not only is meiotic spindle bipolarity an extremely slow process in meiosis I but it appears that assembly of K fibers (microtubule bundles that connect the kinetochores of chromosomes) is quite long: 50 minutes in *Drosophila*, 6 to 7 hours in mice, and about 16 hours in humans^{26–28}. The biological significance of such a progressive K fiber assembly during oocyte meiosis I remains unknown, but it is clear that in both *Drosophila* and mice precocious stabilization of K fibers is deleterious for bivalent alignment, orientation, and segregation^{28,29}.

Oocytes use an inside/outside mode of spindle assembly, first promoting the assembly of microtubules around chromatin and then defining the spindle poles^{25,30–33}. As a result, meiotic spindle poles in oocytes appear less robust, not being anchored into unique and well-defined centrosomes. In some species, like *Drosophila*, nematodes, *Xenopus*, and even human oocytes, microtubule minus ends at spindle poles are not even connected or anchored to discrete PCM foci^{25,34–38}, unlike in rodents^{25,34–38}. The lack of anchoring raises issues not only on spindle pole organization and maintenance but also on the nature of the force integration that allows all chromosomes to end up midway in between both poles, on the metaphase plate. As a consequence of having poles formed by more than one entity, pole integrity can be compromised and splitting of poles may occur, as in cancer cells with extra-centrosomes presenting unbalanced poles composed of multiple centrosomes^{23,31,39}. It may not be so surprising that the rate of chromosome mis-segregation in oocytes is very high compared with most somatic cells in the presence of non-equilibrated spindle poles, which favor merotelic attachments not detected by the spindle assembly checkpoint (SAC)⁴⁰ as shown in cells with extra-centrosomes^{41,42}.

In addition to lacking robust spindle poles, many oocytes use actin-based propulsion forces to position their chromosomes^{43–50}. In starfish oocytes, an actin fishnet is transiently formed at meiosis resumption, prior to the microtubule capture, to maintain all chromosomes spatially confined, avoiding their dispersal in the huge volume of the nucleus, beyond the reach of microtubules^{51–53}. In mitotic cells, even though astral microtubules dictate the orientation of the spindle apparatus, they are also connected to F-actin, which helps transmit forces exerted by the cell enviroing tissue^{54–57}. In mitosis, microfilaments cooperate in spindle assembly: they help separate the two centrosomes in prometaphase, hence promoting spindle bipolarization⁵⁸, and they modulate spindle orientation and favor spindle assembly through mitotic cell rounding⁵⁹. However, in mammalian oocytes, where spindle bipolarization in meiosis I can take hours, it seems important that microfilaments do not interfere with spindle assembly and are thus nucleated around the microtubule spindle only once the latter is robust enough⁶⁰. It was very recently shown that the centrosome can also be a major filament-organizing center (it could be named an FTOC)⁶¹. The centrosome

thus acts as a coordinator of microtubule and microfilament networks inside the cytoplasm. In oocytes, this coordination is missing. Therefore, it is conceivable that other mechanisms have emerged to avoid premature interference between the two meshes and also to modulate their interaction.

Extremely asymmetric divisions in size

Oocytes undergo extremely asymmetric divisions, leading to the formation of a large cell, the oocyte, and two minuscule polar bodies. This size asymmetry is essential to maintain the maternal reserves accumulated during oogenesis in order to sustain embryo development. For this, they rely on very asymmetric spindle positioning. In the case of the *Xenopus* oocyte, 1 mm wide (Figure 3), the asymmetry is clearly extreme where one spindle pole is anchored at the cortex while the other pole cannot reach the opposite cortex (the spindle being approximately 30 μm long). The asymmetric anchoring of the meiotic spindle to the cortex generates a strong imbalance of the forces experienced by each spindle pole, converted into asymmetric forces exerted on the chromosomes. How do oocytes achieve the equilibrium of tension on both sides of each bivalent (meiosis I) or univalent (meiosis II)? Moreover, when somatic cells enter mitosis, they round up and their cortical tension increases and this helps to equilibrate forces coming from each spindle poles to the chromosomes^{54,62–64}. Unexpectedly, mouse oocytes experience a drop in cortical tension during meiosis and this is absolutely necessary for spindle positioning as well as for the asymmetry of the division^{65–67}. One can easily understand that a soft and deformable

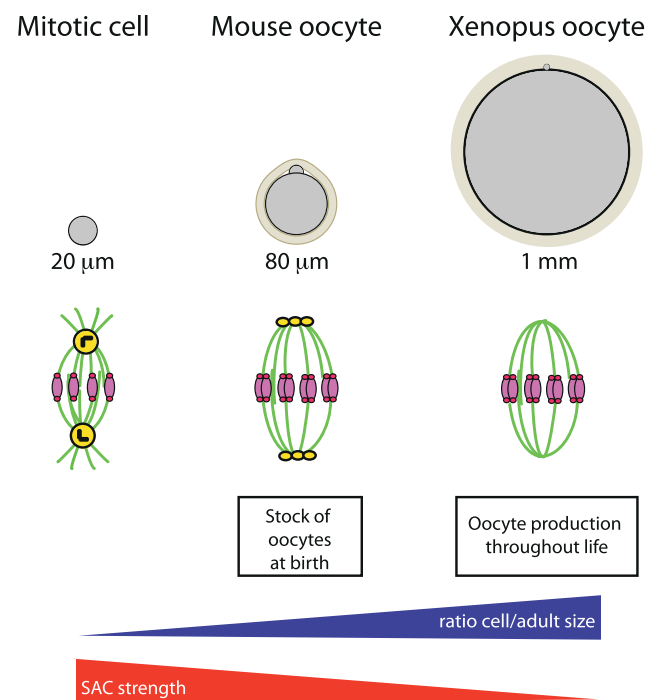


Figure 3. Spindle assembly checkpoint strength in different cells. Cells are in gray and oocytes are surrounded by a protective glycoprotein layer, the zona pellucida (beige). DNA is in pink, kinetochores in dark pink, microtubules in green, centrioles in black, and pericentriolar material (PCM) in yellow.

cortex favors the extrusion of polar bodies tailored to the chromatin mass better than a stiff cortex, as in mitosis. However, it is difficult to conceive how spindle microtubules can transmit and propagate the tension to chromosomes when their poles are not symmetrically anchored and when one pole is actually anchored on a soft material. One has to imagine that pushing or pulling forces might be transmitted more locally or maybe via yet-to-be-discovered structures/mechanisms inside the meiotic spindle. In worm oocytes, a solution has emerged with extensive meiotic spindle pole depolymerization at anaphase I and with most microtubule forces required to separate bivalent chromosomes coming from local microtubule assembly at the chiasmata, allowing the chromosomes to be pushed apart⁶⁸.

Another feature which characterizes oocytes is the poor sensitivity of the SAC to errors in chromosome alignment or to a global drop in tension exerted on bivalents⁶⁹⁻⁷³. In nematodes and *Xenopus* oocytes, there is no SAC response, and no cell cycle arrest is observed in *Caenorhabditis elegans* mutants with severe meiotic spindle defects or after complete microtubule depolymerization in the frog⁷⁴⁻⁷⁷. Similarly, mutations in multiple SAC genes do not affect cyclin B levels or chromosome segregation in *Drosophila* oocytes⁷⁸. In contrast, SAC-deficient *Drosophila* neuroblasts, genetically modified to lack centrosomes, present a higher incidence of chromosome segregation errors than acentrosomal neuroblasts with a functional SAC. This shows that, in *Drosophila* mitosis, a functional SAC is required, in the absence of centrosomes, contrary to what is observed in oocytes⁷⁹. Interestingly, all three of the above species assemble meiotic spindles without discrete PCM foci at their poles and this might contribute to the absence of a SAC response (Figure 3).

As suggested by pioneering work from *Xenopus* early development, the origin of the poor SAC response in oocytes might come from their large size (Figure 3)⁸⁰. The SAC signal, which inhibits the activation of the anaphase-promoting complex/cyclosome (APC/C) and thus the degradation of two key substrates, cyclin B and securin that trigger the metaphase-to-anaphase transition, is produced by unattached kinetochores and might be diluted in the large cytoplasmic volume. It will be very interesting to reduce oocyte size and see whether this restores a mitotic-like SAC response. Alternatively, it may not be strictly the oocyte size per se, but rather its size with respect to the dimensions of the adult female (Figure 3). This ratio might relate better to the amount of energy invested by the species in its reproductive capacity. It could explain why, in nematodes and *Drosophila*, organisms a thousand times smaller than a mouse but producing eggs of comparable size as mammals, there is no SAC response during oocyte meiosis, as in *Xenopus* oocytes that lay eggs 12.5 times larger than mouse eggs for a comparable adult body size.

Exacerbated longevity of mammalian oocytes

Thanks to a renewable population of germ cells that supports gametogenesis in their ovaries, nematodes, *Drosophila*, and amphibian females produce oocytes during their whole life. On the contrary, eutherian mammals possess a finite reserve of germ cells that are formed and stored during embryogenesis. The different reproductive strategies used by these model organisms might also explain the differences in SAC sensitivity (Figure 3). Rapidly spawning a lot of eggs at the right season might have been selected to allow

frog dissemination at the expense of gamete quality production. In contrast to species that lay eggs or embryos in the external milieu, in mammals, the longevity of oocytes from birth to ovulation can reach decades. This raises issues about chromatin architecture maintenance to sustain such a long-lived metabolism, in particular for the turnover of key elements involved in chromosome segregation. Meiotic spindle morphology is altered, with poor chromosome alignment and split poles in aging human oocytes obtained from normal naturally cycling women⁸¹. Also, it has been clearly established that the amount of maternal mRNA encoding for genes involved in the SAC response, spindle integrity, and spindle positioning decreases in aged mouse oocytes^{82,83}. More importantly, the number of proteins maintaining chromosome pairing reaches a critical low level in aged mouse and human oocytes, which impedes the integrity of chiasmata⁸⁴⁻⁸⁶. Furthermore, artificially abolishing one key meiotic cohesin, SMC1 β , by gene targeting already has profound effects on the integrity of bivalents, and aged oocytes deficient for SMC1 β display evidence of chiasma terminalization⁸⁷. The reduction in cohesin levels can be attributed to their lack of turnover. Indeed, genetic studies aimed at assessing the turnover of key cohesin subunits, such as the meiotic cohesin Rec8 or SMC1 β , have demonstrated that these cohesins are not replenished after birth in the growing follicles of the mouse^{88,89}. The progressive deterioration of cohesion could potentially be a leading cause for the increase in errors in chromosome segregation (in particular, errors in meiosis I) observed with age^{1,3,90}. Nonetheless, in *Drosophila* oocytes, evidence for cohesin rejuvenation during oogenesis has been shown⁹¹. Whether this aspect is specific to *Drosophila* or can be extended to mammals is currently unknown.

The effect of cohesin deterioration can be further amplified by the poor sensitivity of the SAC, at least in mice, to a reduction in tension on bivalents⁷¹. Recently, direct observations made on human oocytes have shown that sister kinetochores tend to split prematurely during meiosis I and that this effect increases with age^{92,93}. Premature splitting potentially favors precocious bivalent dissociation into univalent, contributing to aneuploidy.

Conclusions

Amazing progress has been made since the pioneering review that put into the limelight the fact that human oocytes are error prone and that the rate of errors increases with the age of the mother¹. This review challenged scientists in the field to try to understand a major societal issue of our modern societies where women postpone childbearing and to which female scientists were maybe already particularly exposed. Advance has come from studies on diverse model systems presenting both similarities and differences with human oocyte meiosis. Importantly, observations made in human oocytes have been challenged by hypotheses tested in model systems where genetics or biochemistry can be performed. Obviously, it is a combination of factors that seem to predispose oocytes to aneuploidy: their confounding fragile mode of spindle assembly and positioning, coupled to the pressure to preserve maternal stores in a gigantic cell via extreme asymmetry in size of their divisions as well as their longevity. Of course, many other factors not highlighted here, such as the distribution as well as the rate of recombination between homologues, which have a direct influence on chromosome segregation, can also predispose for aneuploidy in oocytes³. The major discovery of PRDM9, a key factor controlling

the distribution of hot spots for recombination in some species but not others, will certainly help us to understand the impact of recombination on aneuploidy in oocytes^{94–96}. Indeed, meiotic maturation is embedded in a continuous process that started in the embryo and that resumes later in the life of an animal. Meiotic maturation also prepares the gamete for fertilization and early development; hence, gamete quality does greatly influence the chances of a successful pregnancy.

Competing interests

The authors declare that they have no competing interests.

Grant information

The author(s) declared that no grants were involved in supporting this work.

Acknowledgments

We wish to thank Maria Almonacid (CIRB, Collège de France, Paris) for her help with the iconography of figures and Agathe Chaigne (Laboratory for Molecular Biology, University College London, UK), Julien Dumont (Institut Jacques Monod, Paris), and Renata Basto (Institut Curie, Paris) as well as all the members of the Verlhac lab for constructive comments on this review. We would like to apologize to those whose work we have not cited here, owing to space constraints.

References



- Hassold T, Hunt P: **To err (meiotically) is human: the genesis of human aneuploidy.** *Nat Rev Genet.* 2001; **2**(4): 280–91.
[PubMed Abstract](#) | [Publisher Full Text](#)
- Hassold T, Hall H, Hunt P: **The origin of human aneuploidy: where we have been, where we are going.** *Hum Mol Genet.* 2007; **16**(R2): R203–8.
[PubMed Abstract](#) | [Publisher Full Text](#)
- Nagaoka SI, Hassold TJ, Hunt PA: **Human aneuploidy: mechanisms and new insights into an age-old problem.** *Nat Rev Genet.* 2012; **13**(7): 493–504.
[PubMed Abstract](#) | [Publisher Full Text](#) | [Free Full Text](#)
- Szollosi D, Calarco P, Donahue RP: **Absence of centrioles in the first and second meiotic spindles of mouse oocytes.** *J Cell Sci.* 1972; **11**(2): 521–41.
[PubMed Abstract](#)
- Tamura M, Nemoto S: **Reproductive maternal centrosomes are cast off into polar bodies during maturation division in starfish oocytes.** *Exp Cell Res.* 2001; **269**(1): 130–9.
[PubMed Abstract](#) | [Publisher Full Text](#)
- Manandhar G, Schatten H, Sutovsky P: **Centrosome reduction during gametogenesis and its significance.** *Biol Reprod.* 2005; **72**(1): 2–13.
[PubMed Abstract](#) | [Publisher Full Text](#)
- Shirato Y, Tamura M, Yoneda M, et al.: **Centrosome destined to decay in starfish oocytes.** *Development.* 2006; **133**(2): 343–50.
[PubMed Abstract](#) | [Publisher Full Text](#)
- Januschke J, Gervais L, Gillet L, et al.: **The centrosome-nucleus complex and microtubule organization in the *Drosophila* oocyte.** *Development.* 2006; **133**(1): 129–39.
[PubMed Abstract](#) | [Publisher Full Text](#)
- Basto R, Lau J, Vinogradova T, et al.: **Flies without centrioles.** *Cell.* 2006; **125**(7): 1375–86.
[PubMed Abstract](#) | [Publisher Full Text](#) | [F1000 Recommendation](#)
- Stevens NR, Raposo AA, Basto R, et al.: **From stem cell to embryo without centrioles.** *Curr Biol.* 2007; **17**(17): 1498–503.
[PubMed Abstract](#) | [Publisher Full Text](#) | [Free Full Text](#) | [F1000 Recommendation](#)
- Azimzadeh J, Wong ML, Downhour DM, et al.: **Centrosome loss in the evolution of planarians.** *Science.* 2012; **335**(6067): 461–3.
[PubMed Abstract](#) | [Publisher Full Text](#) | [Free Full Text](#) | [F1000 Recommendation](#)
- Bazzi H, Anderson KV: **Acentriolar mitosis activates a p53-dependent apoptosis pathway in the mouse embryo.** *Proc Natl Acad Sci U S A.* 2014; **111**(15): E1491–500.
[PubMed Abstract](#) | [Publisher Full Text](#) | [Free Full Text](#) | [F1000 Recommendation](#)
- Kirschner M, Mitchison T: **Beyond self-assembly: from microtubules to morphogenesis.** *Cell.* 1986; **45**(3): 329–42.
[PubMed Abstract](#) | [Publisher Full Text](#)
- Heald R, Khodjakov A: **Thirty years of search and capture: The complex simplicity of mitotic spindle assembly.** *J Cell Biol.* 2015; **211**(6): 1103–11.
[PubMed Abstract](#) | [Publisher Full Text](#) | [Free Full Text](#)
- Gönczy P: **Mechanisms of spindle positioning: focus on flies and worms.** *Trends Cell Biol.* 2002; **12**(7): 332–9.
[PubMed Abstract](#) | [Publisher Full Text](#)
- Kotak S, Gönczy P: **Mechanisms of spindle positioning: cortical force generators in the limelight.** *Curr Opin Cell Biol.* 2013; **25**(6): 741–8.
[PubMed Abstract](#) | [Publisher Full Text](#)
- Rattner JB, Berns MW: **Centriole behavior in early mitosis of rat kangaroo cells (PTK₂).** *Chromosoma.* 1976; **54**(4): 387–95.
[PubMed Abstract](#) | [Publisher Full Text](#)
- Aubin JE, Osborn M, Weber K: **Variations in the distribution and migration of centriole duplexes in mitotic Ptk2 cells studied by immunofluorescence microscopy.** *J Cell Sci.* 1980; **43**: 177–94.
[PubMed Abstract](#)
- Waters JC, Cole RW, Rieder CL: **The force-producing mechanism for centrosome separation during spindle formation in vertebrates is intrinsic to each aster.** *J Cell Biol.* 1993; **122**(2): 361–72.
[PubMed Abstract](#) | [Free Full Text](#)
- Toso A, Winter JR, Garrod AJ, et al.: **Kinetochore-generated pushing forces separate centrosomes during bipolar spindle assembly.** *J Cell Biol.* 2009; **184**(3): 365–72.
[PubMed Abstract](#) | [Publisher Full Text](#) | [Free Full Text](#) | [F1000 Recommendation](#)
- Sköld HN, Komma DJ, Endow SA: **Assembly pathway of the anastral *Drosophila* oocyte meiosis I spindle.** *J Cell Sci.* 2005; **118**(Pt 8): 1745–55.
[PubMed Abstract](#) | [Publisher Full Text](#) | [Free Full Text](#)
- Dumont J, Petri S, Pellegrin F, et al.: **A centriole- and RanGTP-independent spindle assembly pathway in meiosis I of vertebrate oocytes.** *J Cell Biol.* 2007; **176**(3): 295–305.
[PubMed Abstract](#) | [Publisher Full Text](#) | [Free Full Text](#) | [F1000 Recommendation](#)
- Schuh M, Ellenberg J: **Self-organization of MTOCs replaces centrosome function during acentrosomal spindle assembly in live mouse oocytes.** *Cell.* 2007; **130**(3): 484–98.
[PubMed Abstract](#) | [Publisher Full Text](#)
- Hinchcliffe EH: **The centrosome and bipolar spindle assembly: does one have anything to do with the other?** *Cell Cycle.* 2011; **10**(22): 3841–8.
[PubMed Abstract](#) | [Publisher Full Text](#) | [Free Full Text](#)
- Holubcová Z, Blayney M, Elder K, et al.: **Human oocytes. Error-prone chromosome-mediated spindle assembly favors chromosome segregation defects in human oocytes.** *Science.* 2015; **348**(6239): 1143–7.
[PubMed Abstract](#) | [Publisher Full Text](#) | [Free Full Text](#) | [F1000 Recommendation](#)
- Brunet S, Maria AS, Guillaud P, et al.: **Kinetochore fibers are not involved in the formation of the first meiotic spindle in mouse oocytes, but control the exit from the first meiotic M phase.** *J Cell Biol.* 1999; **146**(1): 1–12.
[PubMed Abstract](#) | [Publisher Full Text](#) | [Free Full Text](#)
- Kitajima TS, Ohsugi M, Ellenberg J: **Complete kinetochore tracking reveals error-prone homologous chromosome biorientation in mammalian oocytes.** *Cell.* 2011; **146**(4): 568–81.
[PubMed Abstract](#) | [Publisher Full Text](#) | [F1000 Recommendation](#)
- Gluszek AA, Cullen CF, Li W, et al.: **The microtubule catastrophe promoter Sentin delays stable kinetochore-microtubule attachment in oocytes.** *J Cell Biol.* 2015; **211**(6): 1113–20.
[PubMed Abstract](#) | [Publisher Full Text](#) | [Free Full Text](#) | [F1000 Recommendation](#)

29. **F** Davydenko O, Schultz RM, Lampson MA: **Increased CDK1 activity determines the timing of kinetochore-microtubule attachments in meiosis I.** *J Cell Biol.* 2013; **202**(2): 221–9.
[PubMed Abstract](#) | [Publisher Full Text](#) | [Free Full Text](#) | [F1000 Recommendation](#)
30. Heald R, Tournebise R, Blank T, *et al.*: **Self-organization of microtubules into bipolar spindles around artificial chromosomes in *Xenopus* egg extracts.** *Nature.* 1996; **382**(6590): 420–5.
[PubMed Abstract](#) | [Publisher Full Text](#)
31. Breuer M, Kolano A, Kwon M, *et al.*: **HURP permits MTOC sorting for robust meiotic spindle bipolarity, similar to extra centrosome clustering in cancer cells.** *J Cell Biol.* 2010; **191**(7): 1251–60.
[PubMed Abstract](#) | [Publisher Full Text](#) | [Free Full Text](#)
32. **F** Colombié N, Gtuzsek AA, Meireles AM, *et al.*: **Meiosis-specific stable binding of augmin to acentrosomal spindle poles promotes biased microtubule assembly in oocytes.** *PLoS Genet.* 2013; **9**(6): e1003562.
[PubMed Abstract](#) | [Publisher Full Text](#) | [Free Full Text](#) | [F1000 Recommendation](#)
33. Ohkura H: **Meiosis: an overview of key differences from mitosis.** *Cold Spring Harb Perspect Biol.* 2015; **7**(5): pii: a015859.
[PubMed Abstract](#) | [Publisher Full Text](#)
34. Maro B, Howlett SK, Webb M: **Non-spindle microtubule organizing centers in metaphase II-arrested mouse oocytes.** *J Cell Biol.* 1985; **101**(5 Pt 1): 1665–72.
[PubMed Abstract](#) | [Publisher Full Text](#) | [Free Full Text](#)
35. Gard DL: **Microtubule organization during maturation of *Xenopus* oocytes: assembly and rotation of the meiotic spindles.** *Dev Biol.* 1992; **151**(2): 516–30.
[PubMed Abstract](#) | [Publisher Full Text](#)
36. Gard DL: **Gamma-tubulin is asymmetrically distributed in the cortex of *Xenopus* oocytes.** *Dev Biol.* 1994; **161**(1): 131–40.
[PubMed Abstract](#) | [Publisher Full Text](#)
37. **F** Srayko M, Buster DW, Bazirgan OA, *et al.*: **MEI-1/MEI-2 katanin-like microtubule severing activity is required for *Caenorhabditis elegans* meiosis.** *Genes Dev.* 2000; **14**(9): 1072–84.
[PubMed Abstract](#) | [Free Full Text](#) | [F1000 Recommendation](#)
38. Cullen CF, Ohkura H: **Msp1 protein is localized to acentrosomal poles to ensure bipolarity of *Drosophila* meiotic spindles.** *Nat Cell Biol.* 2001; **3**(7): 637–42.
[PubMed Abstract](#) | [Publisher Full Text](#)
39. **F** Kwon M, Godinho SA, Chandhok NS, *et al.*: **Mechanisms to suppress multipolar divisions in cancer cells with extra centrosomes.** *Genes Dev.* 2008; **22**(16): 2189–203.
[PubMed Abstract](#) | [Publisher Full Text](#) | [Free Full Text](#) | [F1000 Recommendation](#)
40. Cimini D, Howell B, Maddox P, *et al.*: **Merotelic kinetochore orientation is a major mechanism of aneuploidy in mitotic mammalian tissue cells.** *J Cell Biol.* 2007; **153**(3): 517–27.
[PubMed Abstract](#) | [Publisher Full Text](#) | [Free Full Text](#)
41. **F** Ganem NJ, Godinho SA, Pellman D: **A mechanism linking extra centrosomes to chromosomal instability.** *Nature.* 2009; **460**(7252): 278–82.
[PubMed Abstract](#) | [Publisher Full Text](#) | [Free Full Text](#) | [F1000 Recommendation](#)
42. Silkworth WT, Nardi IK, Scholl LM, *et al.*: **Multipolar spindle pole coalescence is a major source of kinetochore mis-attachment and chromosome mis-segregation in cancer cells.** *PLoS One.* 2009; **4**(8): e6564.
[PubMed Abstract](#) | [Publisher Full Text](#) | [Free Full Text](#)
43. Longo FJ, Chen DY: **Development of cortical polarity in mouse eggs: involvement of the meiotic apparatus.** *Dev Biol.* 1985; **107**(2): 382–94.
[PubMed Abstract](#) | [Publisher Full Text](#)
44. Verhac MH, Lefebvre C, Kubiak JZ, *et al.*: **Mos activates MAP kinase in mouse oocytes through two opposite pathways.** *EMBO J.* 2000; **19**(22): 6065–74.
[PubMed Abstract](#) | [Publisher Full Text](#) | [Free Full Text](#)
45. **F** Weber KL, Sokac AM, Berg JS, *et al.*: **A microtubule-binding myosin required for nuclear anchoring and spindle assembly.** *Nature.* 2004; **431**(7006): 325–9.
[PubMed Abstract](#) | [Publisher Full Text](#) | [F1000 Recommendation](#)
46. Prodon F, Chenevert J, Sardet C: **Establishment of animal-vegetal polarity during maturation in ascidian oocytes.** *Dev Biol.* 2006; **290**(2): 297–311.
[PubMed Abstract](#) | [Publisher Full Text](#)
47. Dumont J, Million K, Sunderland K, *et al.*: **Formin-2 is required for spindle migration and for the late steps of cytokinesis in mouse oocytes.** *Dev Biol.* 2007; **301**(1): 254–65.
[PubMed Abstract](#) | [Publisher Full Text](#)
48. Azoury J, Lee KW, Georget V, *et al.*: **Spindle positioning in mouse oocytes relies on a dynamic meshwork of actin filaments.** *Curr Biol.* 2008; **18**(19): 1514–9.
[PubMed Abstract](#) | [Publisher Full Text](#)
49. Schuh M, Ellenberg J: **A new model for asymmetric spindle positioning in mouse oocytes.** *Curr Biol.* 2008; **18**(24): 1986–92.
[PubMed Abstract](#) | [Publisher Full Text](#)
50. Amiel A, Leclère L, Robert L, *et al.*: **Conserved functions for Mos in eumetazoan oocyte maturation revealed by studies in a cnidarian.** *Curr Biol.* 2009; **19**(4): 305–11.
[PubMed Abstract](#) | [Publisher Full Text](#)
51. **F** Lénárt P, Bacher CP, Daigle N, *et al.*: **A contractile nuclear actin network drives chromosome congression in oocytes.** *Nature.* 2005; **436**(7052): 812–8.
[PubMed Abstract](#) | [Publisher Full Text](#) | [F1000 Recommendation](#)
52. **F** Mori M, Monnier N, Daigle N, *et al.*: **Intracellular transport by an anchored homogeneously contracting F-actin meshwork.** *Curr Biol.* 2011; **21**(7): 606–11.
[PubMed Abstract](#) | [Publisher Full Text](#) | [F1000 Recommendation](#)
53. **F** Mori M, Somogyi K, Kondo H, *et al.*: **An Arp2/3 nucleated F-actin shell fragments nuclear membranes at nuclear envelope breakdown in starfish oocytes.** *Curr Biol.* 2014; **24**(12): 1421–8.
[PubMed Abstract](#) | [Publisher Full Text](#) | [F1000 Recommendation](#)
54. **F** Théry M, Jiménez-Dalmaroni A, Racine V, *et al.*: **Experimental and theoretical study of mitotic spindle orientation.** *Nature.* 2007; **447**(7143): 493–6.
[PubMed Abstract](#) | [Publisher Full Text](#) | [F1000 Recommendation](#)
55. **F** Mitsuhashi M, Aoki K, Ebisuya M, *et al.*: **Revolving movement of a dynamic cluster of actin filaments during mitosis.** *J Cell Biol.* 2010; **191**(3): 453–62.
[PubMed Abstract](#) | [Publisher Full Text](#) | [Free Full Text](#) | [F1000 Recommendation](#)
56. **F** Fink J, Carpi N, Betz T, *et al.*: **External forces control mitotic spindle positioning.** *Nat Cell Biol.* 2011; **13**(7): 771–8.
[PubMed Abstract](#) | [Publisher Full Text](#) | [F1000 Recommendation](#)
57. Kwon M, Bagonis M, Danuser G, *et al.*: **Direct Microtubule-Binding by Myosin-10 Orients Centrosomes toward Retraction Fibers and Subcortical Actin Clouds.** *Dev Cell.* 2015; **34**(3): 323–37.
[PubMed Abstract](#) | [Publisher Full Text](#) | [Free Full Text](#)
58. Agircaan FG, Schiebel E, Mardin BR: **Separate to operate: control of centrosome positioning and separation.** *Philos Trans R Soc Lond B Biol Sci.* 2014; **369**(1650): pii: 20130461.
[PubMed Abstract](#) | [Publisher Full Text](#) | [Free Full Text](#)
59. **F** Lancaster OM, Le Berre M, Dimitracopoulos A, *et al.*: **Mitotic rounding alters cell geometry to ensure efficient bipolar spindle formation.** *Dev Cell.* 2013; **25**(3): 270–83.
[PubMed Abstract](#) | [Publisher Full Text](#) | [F1000 Recommendation](#)
60. Azoury J, Lee KW, Georget V, *et al.*: **Symmetry breaking in mouse oocytes requires transient F-actin meshwork destabilization.** *Development.* 2011; **138**(14): 2903–8.
[PubMed Abstract](#) | [Publisher Full Text](#)
61. **F** Farina F, Gaillard J, Guérin C, *et al.*: **The centrosome is an actin-organizing centre.** *Nat Cell Biol.* 2016; **18**(1): 65–75.
[PubMed Abstract](#) | [Publisher Full Text](#) | [F1000 Recommendation](#)
62. **F** Kunda P, Pelling AE, Liu T, *et al.*: **Moesin controls cortical rigidity, cell rounding, and spindle morphogenesis during mitosis.** *Curr Biol.* 2008; **18**(2): 91–101.
[PubMed Abstract](#) | [Publisher Full Text](#) | [F1000 Recommendation](#)
63. Carreno S, Kouranti I, Glusman ES, *et al.*: **Moesin and its activating kinase Slik are required for cortical stability and microtubule organization in mitotic cells.** *J Cell Biol.* 2008; **180**(4): 739–46.
[PubMed Abstract](#) | [Publisher Full Text](#) | [Free Full Text](#)
64. Roubinet C, Decelle B, Chicanne G, *et al.*: **Molecular networks linked by Moesin drive remodeling of the cell cortex during mitosis.** *J Cell Biol.* 2011; **195**(1): 99–112.
[PubMed Abstract](#) | [Publisher Full Text](#) | [Free Full Text](#)
65. **F** Larson SM, Lee HJ, Hung PH, *et al.*: **Cortical mechanics and meiosis II completion in mammalian oocytes are mediated by myosin-II and Ezrin-Radixin-Moesin (ERM) proteins.** *Mol Biol Cell.* 2010; **21**(18): 3182–92.
[PubMed Abstract](#) | [Publisher Full Text](#) | [Free Full Text](#) | [F1000 Recommendation](#)
66. Chaigne A, Campillo C, Gov NS, *et al.*: **A soft cortex is essential for asymmetric spindle positioning in mouse oocytes.** *Nat Cell Biol.* 2013; **15**(8): 958–66.
[PubMed Abstract](#) | [Publisher Full Text](#)
67. Chaigne A, Campillo C, Gov NS, *et al.*: **A narrow window of cortical tension guides asymmetric spindle positioning in the mouse oocyte.** *Nat Commun.* 2015; **6**: 6027.
[PubMed Abstract](#) | [Publisher Full Text](#)
68. **F** Dumont J, Oegema K, Desai A: **A kinetochore-independent mechanism drives anaphase chromosome separation during acentrosomal meiosis.** *Nat Cell Biol.* 2010; **12**(9): 894–901.
[PubMed Abstract](#) | [Publisher Full Text](#) | [Free Full Text](#) | [F1000 Recommendation](#)
69. **F** Nagaoka SI, Hodges CA, Albertini DF, *et al.*: **Oocyte-specific differences in cell-cycle control create an innate susceptibility to meiotic errors.** *Curr Biol.* 2011; **21**(8): 651–7.
[PubMed Abstract](#) | [Publisher Full Text](#) | [Free Full Text](#) | [F1000 Recommendation](#)
70. **F** Lane SI, Yun Y, Jones KT: **Timing of anaphase-promoting complex activation in mouse oocytes is predicted by microtubule-kinetochore attachment but not by bivalent alignment or tension.** *Development.* 2012; **139**(11): 1947–55.
[PubMed Abstract](#) | [Publisher Full Text](#) | [F1000 Recommendation](#)
71. **F** Kolano A, Brunet S, Silk AD, *et al.*: **Error-prone mammalian female meiosis from silencing the spindle assembly checkpoint without normal interkinetochore tension.** *Proc Natl Acad Sci U S A.* 2012; **109**(27): E1858–67.
[PubMed Abstract](#) | [Publisher Full Text](#) | [Free Full Text](#) | [F1000 Recommendation](#)
72. **F** Gui L, Homer H: **Spindle assembly checkpoint signalling is uncoupled from chromosomal position in mouse oocytes.** *Development.* 2012; **139**(11): 1941–6.
[PubMed Abstract](#) | [Publisher Full Text](#) | [Free Full Text](#) | [F1000 Recommendation](#)
73. Sebestova J, Danyilevska A, Novakova L, *et al.*: **Lack of response to unaligned chromosomes in mammalian female gametes.** *Cell Cycle.* 2012; **11**(16): 3011–8.
[PubMed Abstract](#) | [Publisher Full Text](#) | [Free Full Text](#)
74. Clark-Maguire S, Mains PE: **Localization of the mei-1 gene product of *Caenorhabditis elegans*, a meiotic-specific spindle component.** *J Cell Biol.* 1994; **126**(1): 199–209.
[PubMed Abstract](#) | [Publisher Full Text](#) | [Free Full Text](#)

75. Matthews LR, Carter P, Thierry-Mieg D, *et al.*: **ZYG-9, a *Caenorhabditis elegans* protein required for microtubule organization and function, is a component of meiotic and mitotic spindle poles.** *J Cell Biol.* 1998; **141**(5): 1159–68.
[PubMed Abstract](#) | [Publisher Full Text](#) | [Free Full Text](#)
76. Peter M, Castro A, Lorca T, *et al.*: **The APC is dispensable for first meiotic anaphase in *Xenopus* oocytes.** *Nat Cell Biol.* 2001; **3**(1): 83–7.
[PubMed Abstract](#) | [Publisher Full Text](#)
77. **F** Shao H, Li R, Ma C, *et al.*: ***Xenopus* oocyte meiosis lacks spindle assembly checkpoint control.** *J Cell Biol.* 2013; **201**(2): 191–200.
[PubMed Abstract](#) | [Publisher Full Text](#) | [Free Full Text](#) | [F1000 Recommendation](#)
78. Batiha O, Swan A: **Evidence that the spindle assembly checkpoint does not regulate APC^{cy} activity in *Drosophila* female meiosis.** *Genome.* 2012; **55**(1): 63–7.
[PubMed Abstract](#) | [Publisher Full Text](#)
79. **F** Buffin E, Emre D, Karess RE: **Flies without a spindle checkpoint.** *Nat Cell Biol.* 2007; **9**(5): 565–72.
[PubMed Abstract](#) | [Publisher Full Text](#) | [F1000 Recommendation](#)
80. Newport JW, Kirschner MW: **Regulation of the cell cycle during early *Xenopus* development.** *Cell.* 1984; **37**(3): 731–42.
[PubMed Abstract](#) | [Publisher Full Text](#)
81. Battaglia DE, Goodwin P, Klein NA, *et al.*: **Influence of maternal age on meiotic spindle assembly in oocytes from naturally cycling women.** *Hum Reprod.* 1996; **11**(10): 2217–22.
[PubMed Abstract](#)
82. Hamatani T, Falco G, Carter MG, *et al.*: **Age-associated alteration of gene expression patterns in mouse oocytes.** *Hum Mol Genet.* 2004; **13**(19): 2263–78.
[PubMed Abstract](#) | [Publisher Full Text](#)
83. **F** Pan H, Ma P, Zhu W, *et al.*: **Age-associated increase in aneuploidy and changes in gene expression in mouse eggs.** *Dev Biol.* 2008; **316**(2): 397–407.
[PubMed Abstract](#) | [Publisher Full Text](#) | [Free Full Text](#) | [F1000 Recommendation](#)
84. **F** Lister LM, Kouznetsova A, Hyslop LA, *et al.*: **Age-related meiotic segregation errors in mammalian oocytes are preceded by depletion of cohesin and Sgo2.** *Curr Biol.* 2010; **20**(17): 1511–21.
[PubMed Abstract](#) | [Publisher Full Text](#) | [F1000 Recommendation](#)
85. **F** Chiang T, Duncan FE, Schindler K, *et al.*: **Evidence that weakened centromere cohesion is a leading cause of age-related aneuploidy in oocytes.** *Curr Biol.* 2010; **20**(17): 1522–8.
[PubMed Abstract](#) | [Publisher Full Text](#) | [Free Full Text](#) | [F1000 Recommendation](#)
86. **F** Duncan FE, Hornick JE, Lampson MA, *et al.*: **Chromosome cohesion decreases in human eggs with advanced maternal age.** *Aging Cell.* 2012; **11**(6): 1121–4.
[PubMed Abstract](#) | [Publisher Full Text](#) | [Free Full Text](#) | [F1000 Recommendation](#)
87. **F** Hodges CA, Revenkova E, Jessberger R, *et al.*: **SMC1beta-deficient female mice provide evidence that cohesins are a missing link in age-related nondisjunction.** *Nat Genet.* 2005; **37**(12): 1351–5.
[PubMed Abstract](#) | [Publisher Full Text](#) | [F1000 Recommendation](#)
88. **F** Revenkova E, Herrmann K, Adelfalk C, *et al.*: **Oocyte cohesin expression restricted to pre-dictyate stages provides full fertility and prevents aneuploidy.** *Curr Biol.* 2010; **20**(17): 1529–33.
[PubMed Abstract](#) | [Publisher Full Text](#) | [Free Full Text](#) | [F1000 Recommendation](#)
89. **F** Tachibana-Konwalski K, Godwin J, van der Weyden L, *et al.*: **Rec8-containing cohesin maintains bivalents without turnover during the growing phase of mouse oocytes.** *Genes Dev.* 2010; **24**(22): 2505–16.
[PubMed Abstract](#) | [Publisher Full Text](#) | [Free Full Text](#) | [F1000 Recommendation](#)
90. Jessberger R: **Age-related aneuploidy through cohesion exhaustion.** *EMBO Rep.* 2012; **13**(6): 539–46.
[PubMed Abstract](#) | [Publisher Full Text](#) | [Free Full Text](#)
91. **F** Weng KA, Jeffreys CA, Bickel SE: **Rejuvenation of meiotic cohesion in oocytes during prophase I is required for chiasma maintenance and accurate chromosome segregation.** *PLoS Genet.* 2014; **10**(9): e1004607.
[PubMed Abstract](#) | [Publisher Full Text](#) | [Free Full Text](#) | [F1000 Recommendation](#)
92. Patel J, Tan SL, Hartshorne GM, *et al.*: **Unique geometry of sister kinetochores in human oocytes during meiosis I may explain maternal age-associated increases in chromosomal abnormalities.** *Biol Open.* 2015; **5**(2): 178–84.
[PubMed Abstract](#) | [Publisher Full Text](#)
93. **F** Zielinska AP, Holubcova Z, Blayney M, *et al.*: **Sister kinetochore splitting and precocious disintegration of bivalents could explain the maternal age effect.** *eLife.* 2015; **4**: pii: e11389.
[PubMed Abstract](#) | [Publisher Full Text](#) | [Free Full Text](#) | [F1000 Recommendation](#)
94. **F** Baudat F, Buard J, Grey C, *et al.*: **PRDM9 is a major determinant of meiotic recombination hotspots in humans and mice.** *Science.* 2010; **327**(5967): 836–40.
[PubMed Abstract](#) | [Publisher Full Text](#) | [Free Full Text](#) | [F1000 Recommendation](#)
95. **F** Myers S, Bowden R, Tumian A, *et al.*: **Drive against hotspot motifs in primates implicates the PRDM9 gene in meiotic recombination.** *Science.* 2010; **327**(5967): 876–9.
[PubMed Abstract](#) | [Publisher Full Text](#) | [Free Full Text](#) | [F1000 Recommendation](#)
96. Parvanov ED, Petkov PM, Paigen K: **Prdm9 controls activation of mammalian recombination hotspots.** *Science.* 2010; **327**(5967): 835.
[PubMed Abstract](#) | [Publisher Full Text](#) | [Free Full Text](#)

Open Peer Review

Current Referee Status:



Editorial Note on the Review Process

F1000 Faculty Reviews are commissioned from members of the prestigious F1000 Faculty and are edited as a service to readers. In order to make these reviews as comprehensive and accessible as possible, the referees provide input before publication and only the final, revised version is published. The referees who approved the final version are listed with their names and affiliations but without their reports on earlier versions (any comments will already have been addressed in the published version).

The referees who approved this article are:

Version 1

- 1 **John Carroll**, Monash University, Melbourne, Australia
Competing Interests: No competing interests were disclosed.
- 2 **Keith Jones**, University of Southampton, Southampton, UK
Competing Interests: No competing interests were disclosed.