


RESEARCH ARTICLE

Delayed detection of leprosy cases: A systematic review of healthcare-related factors

Yudhy Dharmawan ^{1,2*}, Ahmad Fuady^{1,3,4}, Ida J. Korfage¹, Jan Hendrik Richardus¹

1 Department of Public Health, Erasmus MC, University Medical Center Rotterdam, Rotterdam, The Netherlands, **2** Faculty of Public Health, Universitas Diponegoro, Semarang, Indonesia, **3** Department of Community Medicine, Faculty of Medicine, Universitas Indonesia, Jakarta, Indonesia, **4** Primary Health Care Research and Innovation Center, Indonesian Medical Education and Research Institute, Faculty of Medicine Universitas Indonesia, Jakarta, Indonesia

* y.dharmawan@erasmusmc.nl, yudhydharmawan@lecturer.undip.ac.id



Abstract

OPEN ACCESS

Citation: Dharmawan Y, Fuady A, Korfage IJ, Richardus JH (2022) Delayed detection of leprosy cases: A systematic review of healthcare-related factors. *PLoS Negl Trop Dis* 16(9): e0010756. <https://doi.org/10.1371/journal.pntd.0010756>

Editor: Alberto Novaes Ramos, Jr, Federal University of Ceará, Fortaleza, Brazil, BRAZIL

Received: January 28, 2022

Accepted: August 19, 2022

Published: September 6, 2022

Peer Review History: PLOS recognizes the benefits of transparency in the peer review process; therefore, we enable the publication of all of the content of peer review and author responses alongside final, published articles. The editorial history of this article is available here: <https://doi.org/10.1371/journal.pntd.0010756>

Copyright: © 2022 Dharmawan et al. This is an open access article distributed under the terms of the [Creative Commons Attribution License](https://creativecommons.org/licenses/by/4.0/), which permits unrestricted use, distribution, and reproduction in any medium, provided the original author and source are credited.

Data Availability Statement: All relevant data are within the manuscript and its [Supporting Information](#) files.

Funding: This work was done as part of a PhD scholarship in Health Sciences at Erasmus MC,

Background

In new leprosy cases, grade 2 disability (G2D) is still a public health burden worldwide. It is often associated with the delayed leprosy diagnoses that healthcare systems should play a crucial role in preventing. The aim of this systematic review was to identify healthcare factors related to delays in case detection in leprosy.

Methods

PRISMA (Preferred Reporting Items for Systematic Reviews and Meta-Analysis) was used as a guideline in this research. The study protocol was registered in the PROSPERO (International Prospective Register of Systematic Reviews) with reference code CRD42020189274. Data was collected from five electronic databases: Embase, Medline All Ovid, Web of Science, Cochrane CENTRAL, and the WHO Global Health Library.

Results

After applying the selection criteria for original empirical studies, and after removing duplicates, we included 20 papers from 4313 records. They had been conducted in ten countries and published between January 1, 2000, and January 31, 2021. We identified three categories of healthcare factors related to delayed case. 1) Structural factors, such as i) financial and logistic issues, and geographical circumstances (which we classified as barriers); ii) Health service organization and management including the level of decentralization (classified as facilitators). 2) Health service factors, such as problems or shortages involving referral centers, healthcare personnel, and case-detection methods. 3) Intermediate factors, such as misdiagnosis, higher numbers of consultations before diagnosis, and inappropriate healthcare services visited by people with leprosy.

University Medical Center Rotterdam, that was generously provided by Universitas Diponegoro in Indonesia to YD. The funder of this scholarship played no role in the study design, data collection, data analysis, decision to publish, or preparation of the manuscript.

Competing interests: The authors have declared that no competing interests exist.

Conclusions

Delays in leprosy case detection are due mainly to misdiagnosis. It is crucial to improve the training and capacity of healthcare staff. To avoid misdiagnosis and reduce detection delays, national leprosy control programs should ensure the sustainability of leprosy control within integrated health services.

Author summary

New leprosy patients diagnosed with visible physical deformities represent a significant disease burden that also poses an important public health challenge. The physical deformities often result from long delays in case detection. Greater insight into the healthcare factors that contribute to such delays will support the development of effective prevention programs. We therefore reviewed all studies on the healthcare factors related to case-detection delay that had been published between January 1, 2000, and January 31, 2021. Twenty studies were included in our analysis. We found that misdiagnosis was a core healthcare factor related to delays. Other common factors included inappropriate health services, a high number of consultations before diagnosis; and a lack of referral centers, healthcare personnel, and case-detection methods. Detection delay was further influenced by geographical circumstances, financial and logistic issues, and health-service organization and management including the level of the decentralization of healthcare programs. Because delays in leprosy case detection are due mainly to misdiagnosis, we recommend to improve the training and capacity of healthcare staff. To avoid misdiagnosis and reduce detection delays, national leprosy control programs should ensure the sustainability of leprosy control within integrated health services.

Introduction

Over recent decades, leprosy-control programs have substantially reduced the number of new leprosy cases worldwide [1]. The process started in the 1980s, when the introduction of multi-drug therapy (MDT) was combined with nationwide elimination programs that involved health education, case-detection campaigns, and improvements in the quality of leprosy-related services [1,2]. Unfortunately, however, leprosy remains a public-health problem, mainly because the nerve damage it causes often leads to irreversible secondary impairments of the hands, feet, and eyes [3]. Visible impairments and disabilities such as claw hand, foot drop, and lagophthalmos are classified by the World Health Organization (WHO) as leprosy grade 2 disability (G2D) [4,5].

With 10,816 new cases diagnosed in 2019, G2D leprosy now represents a considerable disease burden [6]. It is often associated with delays in diagnosis and appropriate treatment [5,7,8]: the percentage of new G2D cases correlates clearly with delays in case detection—and the longer the delay, the higher the percentage with G2D [9]. The WHO therefore views the rate of G2D cases as an indicator of the quality of the leprosy health services: if the G2D rate is high, it is a clear indication that these services need to be improved, especially with regard to detection [8,10,11]. Relative to the 2020 baseline rate of 1.30 per million population with G2D, the WHO's Leprosy Global Strategy aims for a 90% reduction of G2D in new leprosy cases by 2030 [6].

Detection delays may have many causes. In our recent systematic review identifying the individual and community factors determinants of these delays [9], we concluded that interventions should focus on health-service-seeking behavior and should also consider relevant individual, socioeconomic, and community factors, including stigmatization. However, healthcare-related factors are also important, such as an inability to diagnose leprosy, and health staff's inability to recognize its early signs and symptoms [6,12]. National healthcare systems, including referral centers and primary care services, have a crucial role in preventing the resulting delays [13]. Improved quality of care and interventions to reduce detection delays depend on the systematic identification of healthcare-related factors to decrease leprosy disability in high and low endemic countries, which is what this systematic literature review aimed to achieve.

Methods

The protocol for this review was based on the Preferred Reporting Items for Systematic Reviews and Meta-Analyses (PRISMA) guidelines for systematic reviews and meta-analyses [14]. The study protocol was registered in the International Prospective Register of Systematic Reviews (PROSPERO) under reference code CRD42020189274.

Selection criteria and search

Our search for delayed leprosy case detection was based on (a) the period of delay calculated from the beginning of signs or symptoms to diagnosis, either in numerical or categorical values; and (b) the occurrence of G2D. To identify factors determining delayed detection, we used PICO (Population, Intervention/Exposure, Comparison and Outcome) to make structured inclusion and exclusion criteria. Population: leprosy patients in leprosy high and low endemic countries were included. Exposure: Health care services factors. Comparison: we included all studies which presented case detection delay as expressed in time periods of months and as cases categorized as G2D without comparing the health care services factors that contributed to them. Outcome: the disability in leprosy. We systematically searched five electronic databases: Embase, Medline All Ovid, Web of Science, Cochrane CENTRAL, and the WHO Global Health Library (for details of the search strategy, see [S1 Text](#)). We included original empirical leprosy-related studies published in English between January 1, 2000, and January 31, 2021. We excluded case reports, articles without full text (abstract only), and articles that made no reference either to delayed case detection or to factors associated with it.

Data extraction

To select articles for full-text screening, two reviewers (YD and AF) independently screened article titles and abstracts. Data from articles were extracted and double-entered into Microsoft Excel. Disagreements were settled by a third reviewer (IK or JHR). The extracted data included author(s), year of publication, article title, journal title, study design, study setting, number of study participants, and summaries of the relationship between healthcare factors and delays in leprosy case detection.

Data analysis

After reviewing all the possible healthcare factors, we listed them as variables associated with delays in leprosy case detection. These variables were then categorized into three main groups: 1) Structural factors; 2) Health service factors; and 3) Intermediate factors by considering causal pathways written in each study reviewed. In the quantitative studies, the strength of the

association between factors was expressed as Odds Ratios (ORs), adjusted Odds Ratios (aORs), Hazard Ratios (HRs), and/or significance p-values. In the qualitative studies, we summarized the content of the studies that stated a relationship between healthcare factors and delayed leprosy case-detection or G2D. We conducted a narrative analysis. A meta-analysis was not feasible due to the variation in the methods as applied in the included studies. The methods and results have been reported following the PRISMA guidelines (see [S1 Table](#)).

Evaluation of the quality of studies

The quality of articles was assessed using a risk-of-bias instrument for potential study-design biases. For quantitative studies, a scoring checklist was used to assess the quality of the research hypothesis, the study population, selection bias, exposure, outcome, and confounding; and to formulate an overall opinion of the study's validity and applicability through the accumulation score of the assessment of the method, sampling, data, result, ethics, implications, and usefulness of the study. This assessment was used for all papers that have been reviewed, which all have observational study design [15]. For qualitative studies, a COREQ checklist was used to evaluate the research team and reflexivity; the study design; and our analysis and findings [16]. For mixed-method studies, both methods were combined. Quality was evaluated by two reviewers (YD and AF). In cases of disagreement, a third reviewer (IK or JHR) was invited to resolve the issue.

Results

In the five databases we identified 7048 articles published between January 2000 and January 2021. After removing duplicates, 4313 articles remained. After the titles and abstracts had been screened, 65 full papers were assessed for eligibility. In the final stage, after the full-text screening, 20 studies were included for analysis. [Fig 1](#) shows the flowchart of article selection according to the PRISMA guidelines.

Twelve articles were observational studies with quantitative analysis [17–28]: nine cross-sectional studies [17,18,21–27], one pre–post study [20], one longitudinal cohort [19], and one retrospective study [28]. Two articles used qualitative analysis [29,30], and six used mixed-methods analysis [31–36]. Fourteen studies (70%) collected data through interviews [17,18,21,23,24,26,28–32,34–36]; while five studies assessed delayed case-detection by reviewing medical records [19,22,25,27,33]; and one assessed delayed case detection through registered data [20]. Most studies were conducted in Asia (five in China, three in India, two in Nepal, one in India and Bangladesh, and one in Myanmar), followed by seven studies in South America (four in Brazil and one each in Colombia, Peru, and Paraguay), and one study in the United Kingdom. Studies were done in various settings: community (n = 7) [17,18,23,27,31,34]; hospital (n = 5) [19,25,29,32,33]; clinic (n = 5) [20–22,30,35]; *hospital and clinic combined* (n = 1) [26]; and *clinic and regions/states combined* (n = 1) [36]. One was a nation-wide data assessment (n = 1) [24]. As well as assessing the experiences of leprosy patients, three studies also involved healthcare professionals [29,35,36]; one study involved pastors [29]; and one study involved the parents of leprosy patients [31]. Detailed information on the selected studies is given in [Table 1](#).

[Fig 2](#) provides a framework for the factors showing their interrelationships and their contribution pathways to delayed case detection. Most factors and their interactions were based on the literature-review findings, supplemented with the interaction between some factors that are inferred to be based on plausibility. This interaction is indicated by the color code in the figure.

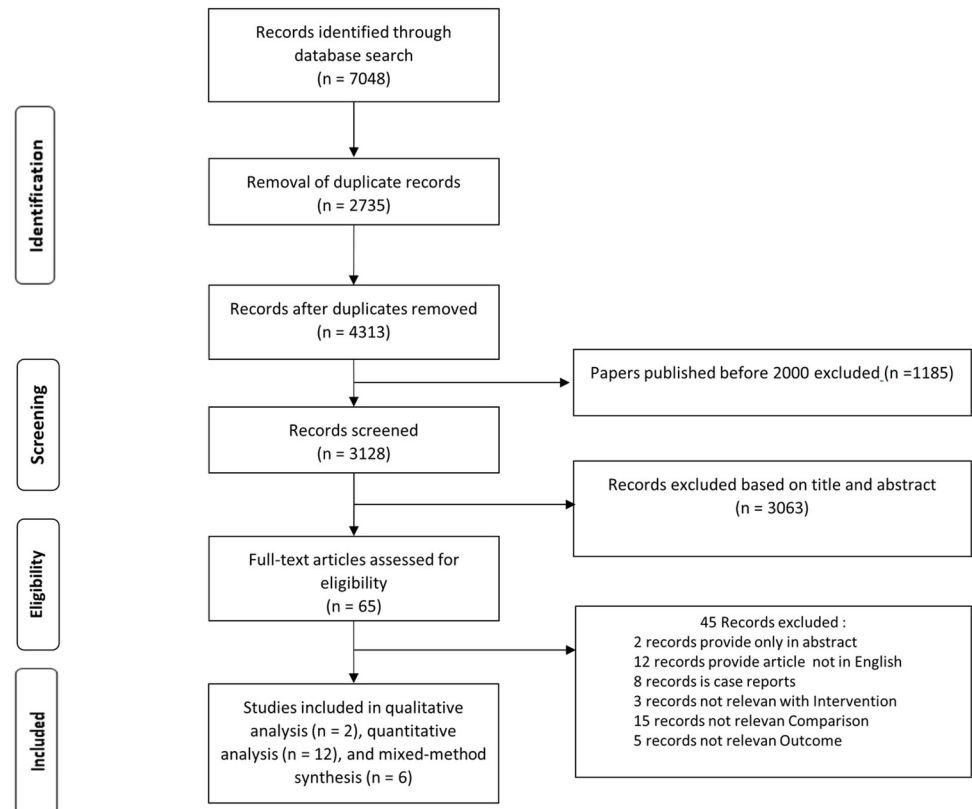


Fig 1. Flow diagram of the selection process.

<https://doi.org/10.1371/journal.pntd.0010756.g001>

1. Structural factors

Structural factors are basic health-service-related factors that contribute to delays in case detection. They include i) financial and logistic issues, and geographical circumstance (which we classified as barriers); ii) health service organization and management including of the level of decentralization of healthcare services (classified as facilitators).

Two studies in Peru and Brazil [30,35] both published in 2020 reported delays related to poor geographical access to healthcare services. Another barrier described by one study post-elimination in Myanmar (2020) was related to lack of financial and logistic support, which limited community-based leprosy field activities [36]; health staff faced high transportation costs for supervising the leprosy control program, and relied on other health programs for field activities [36]. One study in Peru (2010) that evaluated pre and post the leprosy control program decentralization reported that the decentralization of leprosy control and its integration into primary healthcare was a facilitator that led to significantly earlier case detection ($p = 0.012$) [20]. Decentralization led people with leprosy to visit health services closer to their home with percentages increasing from 23.5% to 46.6% ($p < 0.001$), which led in turn to an increase in self-reporting from 38.7% to 51.1% ($p = 0.010$) and to a reduction of G2D leprosy at diagnosis from 16.2% to 7.6% ($p = 0.012$). In contrast, disruptions of decentralized leprosy care, such as a high turnover of health staff and low commitment, contributed to longer case-detection intervals [35], as reported in one study in Brasil (2020) that aimed to analyze assistance provided to people affected leprosy by healthcare management. One paper reported [32] that, in Nepal, the implementation of fully integrated leprosy services contributed to earlier

Table 1. Study characteristics of the included papers.

First author, year of publication	Study design	Country	Setting	Sample size
Quantitative study design				
Libardo Gomez, 2018 [17]	Cross-sectional study based on interviews	Colombia	Community	249
Furen Zhang, 2009 [23]	Cross-sectional study based on interviews	China	Community	88
Peter Nicholls, 2005 [18]	Cross-sectional study based on interviews	India	Community	356
Cacilda Da Silva Souza, 2003 [26]	Cross-sectional study based on interviews	Brazil	Hospital, Clinic	40
Mary Henry, 2016 [21]	Cross-sectional study based on quantitative questionnaires	Brazil	Clinic	122
XS Chen, 2000 [24]	Cross-sectional study based on patient records	China	National	27,928
Jin Lan Li, 2016 [27]	Cross-sectional study based on patient records	China	Community	1274
Liu Jian, 2017 [22]	Cross-sectional study based on patient records	China	Clinic	65
Diana Lockwood, 2001 [25]	Cross-sectional study based on case-note review	UK	Hospital	28
Tongsheng Chu, 2020 [28]	Observational; retrospective study	China	Community	232
Peter Nicholls, 2003 [19]	Observational; by patient cohort	Bangladesh, India	Hospital	2664
Priscila Fuzikawa, 2010 [20]	Pre- and post-analysis of the decentralization of leprosy-control activities.	Brazil	Clinic	435
Qualitative study design				
Peter Nicholls, 2003 [29]	A participatory method based on semi-structured interviews, focus groups, observation, and free listing	Paraguay	Hospital	36
Carmen Osorio-Mejia, 2020 [30]	A qualitative method based on semi-structured interviews	Peru	Clinic	30
Mixed-method design				
Thirumugam Muthuvel, 2017 [31]	A quantitative component based on a matched case-control design with interviews, followed by a descriptive qualitative component	India	Community	210
Sonia Raffe, 2013 [32]	Quantitative component based on a cross-sectional approach. Qualitative data were collected from semi-structured interviews with patients, case-notes review, and brief clinical examinations	Nepal	Hospital	78
Sachin Ramchandra Atre, 2011 [34]	A quantitative component based on a cross-sectional descriptive and qualitative design with semi-structured interviews	India	Community	58
Ulla Britt Engelbrektsson, 2019 [33]	A quantitative and qualitative method based on interviews and review of patients' documents	Nepal	Hospital	81
Cavalcante, 2020 [35]	The program's municipal coordinator provided the quantitative data on the notified cases, and the qualitative data were obtained by semi-structured script	Brazil	Clinic	19
Myo Ko Ko Zaw, 2020 [36]	The quantitative analysis used an ecological study design for regional data aggregation, and the qualitative data were collected by interview	Myanmar	Regions/states, Clinic.	42

<https://doi.org/10.1371/journal.pntd.0010756.t001>

case detection than the earlier non-integrated services, when people visited specialist services as only option for care, often leading to long delays. The low endemicity of leprosy can also contribute to delays in detection: one qualitative study with mix method from India that was done in three districts in one state [31] reported increased detection delays and a lack of involvement by health staff in the National Leprosy Elimination Program (NLEP) after leprosy was declared to have been “eliminated” or “controlled” by the central government.

Fig 2 includes a further structural factor: health-service organization and management. Although this umbrella term was not mentioned explicitly in the articles reviewed, there are many allusions to it.

2. Health services factors

Our review found many Health service factors related to healthcare and human resources that contributed to delayed case detection (Fig 2). One study reported that the limited number of

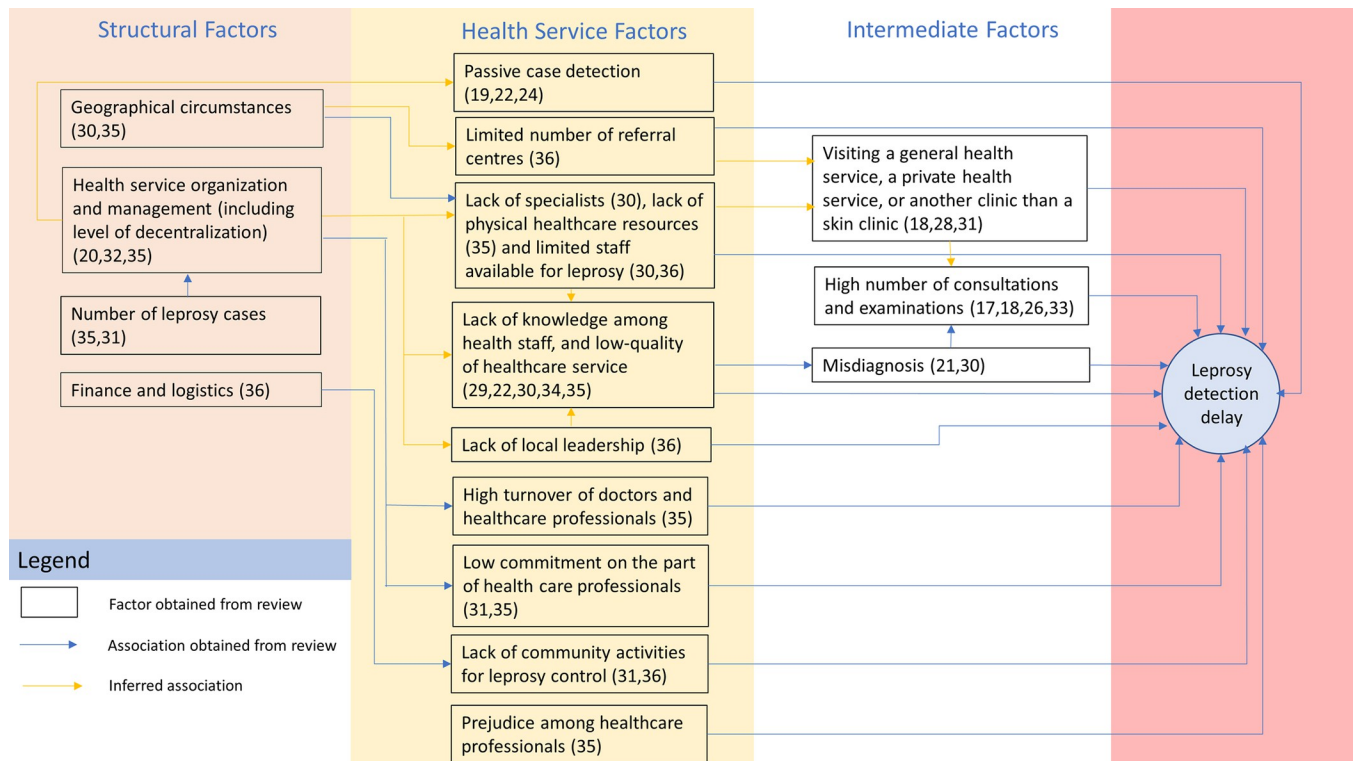


Fig 2. The framework of healthcare factors related to leprosy case-detection delays.

<https://doi.org/10.1371/journal.pntd.0010756.g002>

referral centers for providing appropriate leprosy care [36] was related to such delays. Regarding personnel resources, three studies [30,35,36] reported that the limited availability of healthcare professionals contributed to delays. One study [30] reported that a lack of specialists caused by geographical barriers was associated with delays, as a result of which people with leprosy perceived health services for leprosy to be limited and geographical access to them difficult. One paper [36] stated that, after the completion of leprosy-elimination programs, many members of health staff mentioned that delays had been related to a lack not only to of local leadership, but also of interest in and commitment to leprosy. Another qualitative study [35] mentioned that high personnel turnover, lack of physical resources, and healthcare professionals' low commitment could contribute to detection delays. The same study also reported that prejudice about leprosy among basic healthcare professionals often led to unnecessary referrals and thereby delays [35].

Regarding community perceptions and activities in the leprosy-care services, several studies reported leprosy patients' perceptions of health workers' knowledge and skills and the quality of health services [22,29–31,35]. One qualitative study [31] reported on the important role played by community volunteers in the public health sector, whose involvement helped reduce delays through the early identification and referral of patients to a health facility.

Two studies reported that lack of knowledge regarding leprosy reactions (a complication of leprosy) were an indication of health staff's unfamiliarity with leprosy [22,34]; as staff had difficulty diagnosing leprosy, they contributed to detection delays [22]. Two studies investigating health staff's diagnostic capabilities revealed patients' perceptions that health staff did not know what leprosy was [29], and described health professionals at different levels of the healthcare system as "remarkably unprepared to diagnose leprosy" [35]. Two qualitative studies

reported patients' feelings about the cost of health services, their fear of the diagnosis, the uncertainty of treatment [29], and the mistrust they encountered at the public health facilities [31]. Speaking about the health services, patients referred to a "lack of compassion among doctors" and "long waiting [times]"; and said "They don't treat us good in the government hospital", "I don't like to go to Public Health Centers", and "doctors should be kind to patients" [31].

Case-detection method. Three of the four studies [19,22–24] investigating the role of case-finding methods reported a statistically significant association of these methods with delayed case detection. One quantitative study showed that the shortest detection delay was produced by a contact survey in which each household member of every leprosy patient detected had a physical examination ($p < 0.001$) [19]. One cross-sectional study based on patient records found that household contact survey yielded fewer new patients with a disability than all of the following: a suspect survey (medical examination of people who are suspected of having leprosy); self-reporting (by patients), attending a general skin clinic, and spot surveys (surveys for suspected spots on the skin as a clue to leprosy) ($p < 0.0001$) [22]. One cross-sectional study based on patient records found that detection delays with contact survey (household examination) was shorter by 18 months and notification by skin clinics shorter by 18 months than self-reporting (23 months), screening (25 months), and clue surveys, also known as spot surveys (30 months) ($p < 0.01$) [24]. Although another cross-sectional study based on interviews [23] found no association between mode of leprosy detection and total delay in diagnosis, it provided no p-values.

3. Intermediate factors

We identified three intermediate factors that contributed to delayed case detection (Fig 2). These factors occur in a causal pathway from health service factors to case detection delay. The first was misdiagnosis leading to mistreatment. Misdiagnosis was often cited as a factor in detection delays [17,21,22,26,29,30,32,36]. The misdiagnosis that was reported most was arthritis, photosensitivity, nerve disease or other skin diseases [32]. One study [26] reported that for periods lasting between three months and 10 years before being diagnosed with leprosy, 32.5% of respondents had been living with a diagnosis other than leprosy. Two studies reported that detection had been delayed in 70% [17] and 65% [32] of their patients.

One study [19] reported that patients needing treatment for leprosy reactions (a severe complication of leprosy that often leads to nerve damage) had had shorter delays at the first intake than those without leprosy reactions ($p < 0.01$). This was because leprosy reactions often cause severe acute symptoms such as pain, swelling of patches, and fever, which drove patients to seek medical attention quickly.

Misdiagnosis can occur because of non-specific symptoms of leprosy, or even of being asymptomatic in the initial stage of disease, and because of healthcare staff's low awareness of the initial appearance of leprosy. A study from the UK [25] reported that 6 out of 12 leprosy cases came with unusual presentations, such as pure neuritic leprosy, trigeminal nerve involvement, and anesthetic patches on the thigh, and that these led to misdiagnosis. Another study from Brazil [17] reported that 4.8% of leprosy cases were asymptomatic and diagnosed accidentally.

The second intermediate factor in detection delays was the number of consultations and examinations—physical and otherwise—that were needed before leprosy was diagnosed. Six studies investigated the relationship between delayed case detection and the number of examinations and/or consultations in healthcare services [17,18,21,23,26,33]. On average, the detection delay for patients who needed five or more consultations was 24.4 months longer than for those diagnosed during the initial consultation ($p = 0.009$) [17]. Repeated contact with health-

service practitioners was associated with delayed detection (OR: 2.05, 95% CI: 1.42–2.97, $p < 0.001$) [18]. For every additional examination, the odds of a patient that would receive a quicker diagnosis of leprosy were 46% (OR: 0.539, 95% CI: 0.393–0.739, $p < 0.001$) [21]. One study reported that many patients (45.5%) had been diagnosed at their second to fifth visit [23]. Another study reported that 30% of patients in its sample of cases had needed more than five visits to medical services before the diagnosis was suspected [26]. The delay for those with 1–3 visits was less than it was for those with four or more visits ($p = 0.051$) [33]. In contrast, two studies [17,21] reported that examinations confirming the diagnosis were not associated with detection delay.

The third intermediate factor in detection delays related to the type of healthcare service. Lack of referral services or the existence of integrated leprosy services could lead patients to visit nearby health services that had only limited experience of diagnosing leprosy. Three studies [18,28,31] reported statistically significant relationships between delayed case detection and the type of healthcare service patients had visited. Delayed case detection was associated with a first consultation at a general health service (aOR:2.10, 95% CI: 1.46–3.00, $p < 0.001$) [18]; at another service than a skin clinic (OR: 3.21, 95% CI: 1.68–6.14, $p < 0.001$) [28]; and at a private healthcare provider (aOR:2.6, 95% CI: 1.4–5.2, $p < 0.05$) [31]. One study [21] reported that health system delays were not significantly associated with referral to another doctor (OR: 1.667, 95% CI: 0.8–3.4, $p = 0.176$).

Discussion

This systematic review distinguished three categories of healthcare factors related to delayed case detection of leprosy: 1) Structural factors, which included geographical circumstance, financial and logistic issues, and health-service organization and management including the level of decentralization; 2) health service factors, which included healthcare personnel, case-detection methods, and lack of referral centers or issues with them; and 3) intermediate factors such as misdiagnosis, a high number of consultations, and inappropriate healthcare services visited by people with leprosy.

Misdiagnosis is a key proximal factor related to delays in case detection. Due to the wide variation of signs and symptoms, leprosy is often not easily recognized. While hypopigmented or reddish skin lesions with central hypoesthesia are common presenting skin symptoms, many patients present primarily with signs of peripheral neuropathy [37]. As leprosy is diagnosed on the basis of clinical, microbiological, and histopathological features, diagnosis is difficult for general healthcare professionals [38]. If it is not diagnosed immediately, people with leprosy will need more visits to healthcare providers. Longer detection delays can also be caused by wrong diagnoses [39]. Health staff's ability to diagnose leprosy plays a vital role in detecting leprosy at an early stage [34,40]. Bad experiences with diagnosis and treatment by healthcare professionals will lead to a mistrust of healthcare services, with patients thinking that the leprosy healthcare services are a waste of time and money [31].

While training and capacity building has been shown to increase health workers' capabilities with regard to the early diagnosis and control of leprosy [31,41], any capacity for leprosy detection can be disrupted by high levels of staff mobility and turnover [42]. Maintaining skill levels in leprosy-control programs is also challenging, and there is still a risk that healthcare staff will lose their awareness of the need for early case detection [42]. As periodic efforts should be made to engage and capacitate all healthcare staff [8], training content should be tailored to their needs and skills. This content should also be integrated into health programs, and include aspects of leadership and management [43,44]. To maintain a high awareness of leprosy, improve diagnostic skills, and avoid professionals' prejudice with regard to diagnosing

leprosy, training must be implemented at different levels, including that of specialists such as dermatologists and neurologists [23].

Accessible leprosy health services and referral hospitals are essential to reducing delays in detection [45]. Lack of dedicated healthcare services and laboratory facilities will lead to misdiagnoses and further delays. National leprosy control programs must ensure the availability of healthcare for leprosy patients, with competent staff and minimal staff turnover [46]. National leprosy control programs should also provide sufficient regulations and incentives for maintaining the readiness of health staff to provide proper diagnosis and treatment [28,47]. As case detection is sometimes delayed by visits to private clinics and by a lack of community activities such as active leprosy case-finding surveys, leprosy control programs could adopt approaches developed by tuberculosis programs to find the cases as early as possible, such as a public-private mixed (PPM) approach and the involvement of community health workers in the national leprosy control program. The leprosy control program can create health care network services in one district/city involving all public and private health facilities of leprosy coordinated by the District/City Health Office to increase the leprosy early case detection [48,49].

With regard to national programs, it should be understood that a key component—which also helps reduce detection delays—is sustainability [50]. To achieve the sustainability brought by maintaining these programs and ensuring their financing over time, many leprosy services have now been integrated into essential health and primary care [40]. Early detection would be aided by a strategy of decentralizing and integrating leprosy detection and treatment into general health centers and community programs [26,33,51]. To overcome any lack of specialists, health staff, and referral hospitals, especially in areas with geographic barriers, national leprosy control programs should support their own decentralization and the integration of leprosy control programs into primary healthcare [30,35]. These programs should also take care not to declare prematurely that leprosy has been eliminated, as this can reduce healthcare professionals' awareness of and commitment to the disease, thereby ending its early detection [31,36].

There are various methods for detecting leprosy in the community: household contact surveys, suspect surveys, self-reporting, general skin-clinic examinations, spot surveys, screening, rapid village surveys, and clue surveys [24]. National leprosy control programs should encourage active case finding—especially through household contact surveys—as an effective strategy mainly for targeting high endemic areas (hot spots) in individual districts [8,31]. An effective and feasible intervention recommended by the WHO for reducing leprosy cases is to follow a contact survey by providing post-exposure prophylaxis to eligible contacts with single-dose rifampicin (SDR). This intervention can prevent delay effectively due to the leprosy control program must contact the community directly to increase the awareness of the community through health promotion efforts and do active case finding [52–54].

This article is the first systematic review on healthcare factors related to delays in leprosy case-detection. While it summarizes the factors determining delayed leprosy case detection on the health-system supply side, it also has three main limitations. First, because methods and research settings differed between studies, it is not easy to generalize findings. Second, as we included only studies in English, we could not capture other-language publications that may have originated in countries with a high leprosy burden, such as Indonesia and Brazil [12]. Third, the various definitions used in the different studies made it difficult to achieve standardization.

Conclusion

Misdiagnosis is the main factor in healthcare-related delays in leprosy case-detection. Interventions should focus on avoiding misdiagnosis of leprosy. National leprosy control programs

must prioritize the training and capacity building of their healthcare staff. To avoid misdiagnosis and reduce detection delays, the sustainability of leprosy control within integrated health services should be ensured.

Supporting information

S1 Table. PRISMA Checklist.

(DOC)

S1 Text. Search strategy for each database.

(DOCX)

Acknowledgments

The authors thank Wichor Bramer, Sabrina Meertens-Gunput, Elise Krabbendam, Maarten Engel, and Christa Niehot at the Erasmus MC Medical Library for developing and updating our search strategies.

Author Contributions

Conceptualization: Yudhy Dharmawan, Ida J. Korfage, Jan Hendrik Richardus.

Data curation: Yudhy Dharmawan.

Formal analysis: Yudhy Dharmawan, Ahmad Fuady.

Investigation: Yudhy Dharmawan.

Methodology: Yudhy Dharmawan, Ida J. Korfage, Jan Hendrik Richardus.

Supervision: Ahmad Fuady, Ida J. Korfage, Jan Hendrik Richardus.

Validation: Yudhy Dharmawan, Ahmad Fuady, Ida J. Korfage, Jan Hendrik Richardus.

Visualization: Yudhy Dharmawan.

Writing – original draft: Yudhy Dharmawan.

Writing – review & editing: Yudhy Dharmawan, Ahmad Fuady, Ida J. Korfage, Jan Hendrik Richardus.

References

1. Braber KL. An evaluation of GAEL, the Global Alliance for the Elimination of Leprosy. *Leprosy review*. 2004; 75(3):208. PMID: [15508896](#)
2. Vieira MCA, Nery JS, Paixao ES, Freitas de Andrade KV, Oliveira Penna G, Teixeira MG. Leprosy in children under 15 years of age in Brazil: A systematic review of the literature. *PLoS Negl Trop Dis*. 2018; 12(10):e0006788. Epub 2018/10/03. <https://doi.org/10.1371/journal.pntd.0006788> [pii]. PMID: [30278054](#); PubMed Central PMCID: PMC6168122.
3. Govindarajulu S, Lal V, Davidson ST, Muthuvel T, George S, Vaikundanathan K. Operational cost for management of leprosy-related complicated ulcer in charitable hospitals. *Lepr Rev*. 2015; 86(283):7. PMID: [26665365](#)
4. Sabeena J, Bindu RS. Grade 2 Disability in Leprosy and its Predictors: A 10 year Retrospective Study from Kerala, India. *Indian J Lepr*. 2020; 92:199–209.
5. Raposo MT, Reis MC, Caminha AVQ, Heukelbach J, Parker LA, Pastor-Valero M, et al. Grade 2 disabilities in leprosy patients from Brazil: Need for follow-up after completion of multidrug therapy. *PLoS Negl Trop Dis*. 2018; 12(7):e0006645. Epub 2018/07/17. <https://doi.org/10.1371/journal.pntd.0006645> [pii]. PMID: [30011288](#); PubMed Central PMCID: PMC6062121.
6. WHO. *Toward Zero Leprosy, Global Leprosy (Hansen's disease) Strategy 2021–2030*: WHO; 2021.

7. WHO. Global leprosy update, 2013; reducing disease burden. *Weekly Epidemiological Record*. 2014; 89(36):389–400. PMID: [25202781](#)
8. Srinivas G, Muthuvel T, Lal V, Vaikundanathan K, Schwienhorst-Stich EM, Kasang C. Risk of disability among adult leprosy cases and determinants of delay in diagnosis in five states of India: A case-control study. *PLoS Negl Trop Dis*. 2019; 13(6):e0007495. Epub 2019/06/28. <https://doi.org/10.1371/journal.pntd.0007495> [pii]. PMID: [31247040](#); PubMed Central PMCID: PMC6619834.
9. Dharmawan Y, Fuady A, Korlage I, Richardus JH. Individual and community factors determining delayed leprosy case detection: A systematic review. *PLOS Neglected Tropical Diseases*. 2021; 15(8): e0009651. <https://doi.org/10.1371/journal.pntd.0009651> PMID: [34383768](#)
10. Schreuder PAM, Noto S, Richardus JH. Epidemiologic trends of leprosy for the 21st century. *Clinics in dermatology*. 2016; 34(1):24–31. <https://doi.org/10.1016/j.clinidermatol.2015.11.001> PMID: [26773620](#)
11. WHO. Global leprosy update, 2014: need for early case detection. *Weekly Epidemiological Record*. 2015; 90(36):461–74. PMID: [26343055](#)
12. WHO. Global leprosy (Hansen disease) update, 2019: time to step-up prevention initiatives *Weekly Epidemiological Record*. 2020; 95(36):417–40.
13. Ramos JM, Martínez-Martin M, Reyes F, Lemma D, Belinchón I, Gutiérrez F. Gender differential on characteristics and outcome of leprosy patients admitted to a long-term care rural hospital in South-Eastern Ethiopia. *International Journal for Equity in Health*. 2012; 11(1):1–7. <https://doi.org/10.1186/1475-9276-11-56> PMID: [23035879](#)
14. Liberati A, Altman DG, Tetzlaff J, Mulrow C, Gotzsche PC, Ioannidis JP, et al. The PRISMA statement for reporting systematic reviews and meta-analyses of studies that evaluate health care interventions: explanation and elaboration. *Ann Intern Med*. 2009; 151(4):W65–94. Epub 2009/07/23. <https://doi.org/10.7326/0003-4819-151-4-200908180-00136> [pii] PMID: [19622512](#).
15. Dutch Cochrane C. Guideline for methodological quality assessment of observational studies [in Dutch]. Dutch Cochrane Centre; 2010.
16. Tong A, Sainsbury P, Craig J. Consolidated criteria for reporting qualitative research (COREQ): a 32-item checklist for interviews and focus groups. *Int J Qual Health Care*. 2007; 19(6):349–57. Epub 2007/09/18. doi: [10.1093/intqhc/mzm042](https://doi.org/10.1093/intqhc/mzm042). PMID: [17872937](#).
17. Gomez L, Rivera A, Vidal Y, Bilbao J, Kasang C, Parisi S, et al. Factors associated with the delay of diagnosis of leprosy in north-eastern Colombia: a quantitative analysis. *Trop Med Int Health*. 2018; 23(2):193–8. Epub 2017/12/13. doi: [10.1111/tmi.13023](https://doi.org/10.1111/tmi.13023). PMID: [29230912](#).
18. Nicholls PG, Chhina N, Bro AK, Barkataki P, Kumar R, Withington SG, et al. Factors contributing to delay in diagnosis and start of treatment of leprosy: Analysis of help-seeking narratives in northern Bangladesh and in West Bengal, India. *Lepr Rev*. 2005; 76(1):35–47. PMID: [15881034](#)
19. Nicholls PG, Croft RP, Richardus JH, Withington SG, Smith WCS. Delay in presentation, an indicator for nerve function status at registration and for treatment outcome—The experience of the Bangladesh Acute Nerve Damage Study cohort. *Lepr Rev*. 2003; 74:349–56. PMID: [14750580](#)
20. Fuzikawa PL, Acurcio FDA, Velema JP, Cherchiglia ML. Decentralisation of leprosy control activities in the municipality of Betim, Minas Gerais State, Brazil. *Leprosy review*. 2010; 81(3):184. PMID: [21067059](#)
21. Henry M, GalAn N, Teasdale K, Prado R, Amar H, Rays MS, et al. Factors Contributing to the Delay in Diagnosis and Continued Transmission of Leprosy in Brazil—An Explorative, Quantitative, Questionnaire Based Study. *PLoS Negl Trop Dis*. 2016; 10(3):e0004542. Epub 2016/03/16. <https://doi.org/10.1371/journal.pntd.0004542> [pii]. PMID: [26977811](#); PubMed Central PMCID: PMC4792453.
22. Jian L, Lianchao Y, Shiguo Z, Wang S, Junchao G. Delayed diagnosis of leprosy cases that persist in China. *Lepr Rev*. 2017; 88(3):354–63.
23. Zhang F, Chen S, Sun Y, Chu T. Healthcare seeking behaviour and delay in diagnosis of leprosy in a low endemic area of China. *Lepr Rev*. 2009; 80:416–23. PMID: [20306640](#)
24. Chen XS, Li WZ, Jiang C, Ye GY. Leprosy in China: delay in the detection of cases. *Ann Trop Med Parasitol*. 2000; 94(2):181–8. Epub 2000/05/29. doi: [10.1080/00034980057527](https://doi.org/10.1080/00034980057527). PMID: [10827873](#).
25. Lockwood DNJ, Reid AJC. The diagnosis of leprosy is delayed in the United Kingdom. *QJM Mon J Assoc Phys*. 2001; 94:207–12.
26. Da Silva Souza C, Bacha JT. Delayed diagnosis of leprosy and the potential role of educational activities in Brazil. *Lepr Rev*. 2003; 74:249–58. PMID: [14577470](#)
27. Li J, Yang L, Wang Y, Liu H, Liu J, Cross H. How to improve early case detection in low endemic areas with pockets of leprosy: a study of newly detected leprosy patients in Guizhou Province, People's Republic of China. *Lepr Rev*. 2016; 87:23–31. PMID: [27255055](#)
28. Chu T, Liu D, Huai P, Chen X, Han S, Chen S, et al. Comprehensive measures succeeded in improving early detection of leprosy cases in post-elimination era: Experience from Shandong province, China.

- PLoS neglected tropical diseases. 2020; 14(2):e0007891–e. <https://doi.org/10.1371/journal.pntd.0007891> PMID: 32078623
29. Nicholls PG, Wiens C, Smith WCS. Delay in Presentation in the Context of Local Knowledge and Attitude Towards Leprosy—The Results of Qualitative Fieldwork in Paraguay. *Int J Lepr Other Mycobact Dis.* 2003; 71:198–209. [https://doi.org/10.1489/1544-581X\(2003\)71<198:DIPITC>2.0.CO;2](https://doi.org/10.1489/1544-581X(2003)71<198:DIPITC>2.0.CO;2) PMID: 14608815
 30. Osorio-Mejia C, Falconi-Rosadio E, Acosta J. Interpretation systems, therapeutic itineraries and repertoires of leprosy patients in a low prevalence country Sistemas de interpretacion, itinerarios y repertorios terapeuticos de pacientes con lepra en un pais con baja prevalencia. *Rev Peru Med Exp Salud Publica.* 2020; 37(1):25–31. Epub 2020/06/11. doi: [10.17843/rpmesp.2020.371.4820](https://doi.org/10.17843/rpmesp.2020.371.4820). PMID: 32520188.
 31. Muthuvel T, Govindarajulu S, Isaakidis P, Shewade HD, Rokade V, Singh R, et al. "I Wasted 3 Years, Thinking It's Not a Problem": Patient and Health System Delays in Diagnosis of Leprosy in India: A Mixed-Methods Study. *PLoS Negl Trop Dis.* 2017; 11(1):e0005192. Epub 2017/01/13. <https://doi.org/10.1371/journal.pntd.0005192> [pii]. PMID: 28081131; PubMed Central PMCID: PMC5230757.
 32. Raffe SF, Thapa M, Khadge S, Tamang K, Hagge D, Lockwood DN. Diagnosis and treatment of leprosy reactions in integrated services—the patients' perspective in Nepal. *PLoS Negl Trop Dis.* 2013;7:e2089–e. <https://doi.org/10.1371/journal.pntd.0002089> PMID: 23505585
 33. Engelbrektsson UB, Subedi M, Nicholls P. The challenge of health-seeking: recollections of leprosy inpatients in post-elimination Nepal. *Lepr Rev.* 2019; 90:433–43.
 34. Atre SR, Rangan SG, Shetty VP, Gaikwad N, Mistry NF. Perceptions, health seeking behaviour and access to diagnosis and treatment initiation among previously undetected leprosy cases in rural Maharashtra, India. *Lepr Rev.* 2011; 82(3):222–. PMID: 22125930
 35. Larocca LM, Chaves MMN. Multiple dimensions of healthcare management of leprosy and challenges to its elimination. *Rev Esc Enferm USP.* 2020; 54:e03649. Epub 2020/12/10. <https://doi.org/S0080-62342020000100491> [pii] PMID: 33295529.
 36. Zaw M, Satyanarayana S, Htet KKK, Than K, Aung C. Is Myanmar on the right track after declaring leprosy elimination? Trends in new leprosy cases (2004–2018) and reasons for delay in diagnosis. *Lepr Rev.* 2020; 91:25–40.
 37. Duthie MS, Orcullo FM, Abbelana J, Maghanoy A, Balagon MF. Comparative evaluation of antibody detection tests to facilitate the diagnosis of multibacillary leprosy. *Applied microbiology and biotechnology.* 2016; 100(7):3267–75. <https://doi.org/10.1007/s00253-016-7328-8> PMID: 26820649
 38. Forbes BA, Hall GS, Miller MB, Novak SM, Rowlinson M-C, Salfinger M, et al. Practical guidance for clinical microbiology laboratories: mycobacteria. *Clinical microbiology reviews.* 2018; 31(2):e00038–17. <https://doi.org/10.1128/CMR.00038-17> PMID: 29386234
 39. Subedi M, Engelbrektsson U-B. Factors contributing to delay in diagnosis and start of treatment of leprosy: Analysis of help-seeking narratives from a community study in Dang district. *Dhaulagiri Journal of Sociology and Anthropology.* 2018; 12:11–7.
 40. Turner D, McGuinness S, Leder K. Leprosy: diagnosis and management in a developed setting. *Internal medicine journal.* 2015; 45(1):109–12. <https://doi.org/10.1111/imj.12638> PMID: 25582940
 41. Rao PV, Rao SL, Vijayakrishnan B, Chaudhary AB, Peril S, Reddy BP, et al. Knowledge, attitude and practices about leprosy among medical officers of Hyderabad urban district of Andhra Pradesh. *Indian journal of leprosy.* 2007; 79(1):27–43. PMID: 17578266
 42. Chambers ST. Leprosy in the South Pacific. 2014.
 43. Smith WC. Sustaining anti-leprosy activities requires radical changes. *Lepr Rev.* 2010; 81(4):281–3. PMID: 21313970
 44. Faye O, Hay RJ, Ryan TJ, Keita S, Traore AK, Mahé A. A public health approach for leprosy detection based on a very short term-training of primary health care workers in basic dermatology. *Leprosy review.* 2007; 78(1):11. PMID: 17518081
 45. WHO. Global Strategy for further reducing the leprosy burden and sustaining leprosy control activities: plan period: 2006–2010. 2005.
 46. Pandey A, Patel R, Uddin MJ. Leprosy control activities in India: integration into general health system. *Leprosy review.* 2006; 77(3):210–8. PMID: 17172001
 47. Nsagha DS, Bamgboye EA, Assob JCN, Njunda AL, Kamga HLF, Bissek ACZ-K, et al. Elimination of leprosy as a public health problem by 2000 AD: an epidemiological perspective. *Pan African Medical Journal.* 2011; 9(1).
 48. Fuady A, Pakasi TA, Mansyur M. The social determinants of knowledge and perception on pulmonary tuberculosis among females in Jakarta, Indonesia. *Medical Journal Indonesia.* 2014; 23(2):93–105.

49. Fuady A, Houweling TAJ, Mansyur M, Burhan E, Richardus JH. Cost of seeking care for tuberculosis since the implementation of universal health coverage in Indonesia. *BMC Health Serv Res.* 2020; 20(1):502. Epub 2020/06/05. <https://doi.org/10.1186/s12913-020-05350-y> [pii]. PMID: 32493313; PubMed Central PMCID: PMC7271484.
50. Pannikar V. Enhanced global strategy for further reducing the disease burden due to leprosy: 2011–2015. *Lepr Rev.* 2009; 80(4):353–4. PMID: 20306634
51. Msyamboza KP, Mawaya LR, Kubwalo HW, Ng'oma D, Liabunya M, Manjolo S, et al. Burden of leprosy in Malawi: community camp-based cross-sectional study. *BMC international health and human rights.* 2012; 12(1):1–8. <https://doi.org/10.1186/1472-698X-12-12> PMID: 22867526
52. Taal AT, Blok DJ, van Brakel WH, de Vlas SJ, Richardus JH. Number of people requiring post-exposure prophylaxis to end leprosy: A modeling study. *PLoS neglected tropical diseases.* 2021; 15(2): e0009146. <https://doi.org/10.1371/journal.pntd.0009146> PMID: 33630836
53. Richardus JH, Tiwari A, Barth-Jaeggi T, Arif MA, Banstola NL, Baskota R, et al. Leprosy post-exposure prophylaxis with single-dose rifampicin (LPEP): an international feasibility programme. *The Lancet Global Health.* 2021; 9(1):e81–e90. [https://doi.org/10.1016/S2214-109X\(20\)30396-X](https://doi.org/10.1016/S2214-109X(20)30396-X) PMID: 33129378
54. WHO. Guidelines for the diagnosis, treatment and prevention of leprosy. 2018.