

# High Density of Transmembrane Glycoproteins on the Flagellar Surface of Boar Sperm Cells

ARTUR P. AGUAS and PEDRO PINTO DA SILVA

Membrane Biology Section, Laboratory of Pathophysiology, National Cancer Institute, Frederick Cancer Research Facility, Frederick, Maryland 21701

**ABSTRACT** Membrane halves of boar sperm flagella were produced by freeze-fracture and labeled in situ with concanavalin A and wheat germ agglutinin; the lectins were visualized with protein-gold complexes. Concanavalin A and wheat germ agglutinin binding sites partition with both protoplasmic and exoplasmic halves of the membrane. A high density of lectin marking was found on protoplasmic membrane halves; we conclude that the label corresponds to transmembrane glycoproteins that, on freeze-fracture, are dragged across the outer (exoplasmic) half of the phospholipid bilayer. Our demonstration of numerous transmembrane proteins in sperm flagella offers the structural setting for previous models on flagellar surface motility that postulate accessibility of motile membrane components to the submembranous cytoskeleton.

Flagella of eucaryotic cells are specialized extensions of the cell body composed of similar basic components: a central axoneme, a thin layer of cytoplasm that may include mitochondria, accessory fibers or paraflagellar rods, and the limiting plasma membrane (1–4). They are responsible for two independent forms of whole-cell movement: swimming propelled by coordinated bending of the flagellum (4) and gliding on the surface of a solid substrate (5–7). Swimming is the result of sliding of axonemal microtubules, as characterized in a number of elegant studies (8–12). Gliding was first described in *Chlamydomonas* by Lewin (5) and appears to depend on the dynamics of the flagellar surface in association with cytoskeleton structures (7).

Flagellar surface motility is expressed by the saltatory movement of exogenous markers (polystyrene microspheres or bacteria) (13). Bloodgood proposed that the markers bind to putative “motility-coupled cell-surface receptors” (7, 13). The density of these receptors slowly decreases upon incubation of flagella in inhibitors of protein synthesis (cycloheximide) and protein glycosylation (tunicamycin) (6, 14). Pronase digestion of a high-molecular-weight glycoprotein of the flagellar surface causes reversible loss of gliding ability (6, 15). Structural studies on flagella reported the presence of submembranous cytoskeleton-like elements that, in some cells, may connect the plasma membrane with the outer doublet microtubules of the axoneme (1–4, 16–18). ATPase activity was also found on the submembranous cytoplasm of flagella (19–25).

Current models on the coupling of surface receptors with the cytoskeleton postulate the existence of transmembrane

glycoproteins on the flagellar membrane (3, 14). This topology of glycoproteins in the membrane would allow the same molecule to express (on its outer portion) the surface receptors and to be accessible (on its cytoplasmic portion) for interaction with the membrane skeleton or with axonemal microtubules. Here, we search for the topology of glycoconjugates on the flagellar surface of boar sperm cell using “fracture-label” techniques (26–28). The method allows direct labeling of membrane halves, obtained by freeze-fracture of cells, with specific cytochemical markers. We used lectin-protein-gold complexes to study the partition and density of glycoconjugates with sugar residues of mannose/glucose (concanavalin A [Con A] [29])<sup>1</sup> and sialic acid/*N*-acetyl-glucosamine (wheat germ agglutinin [WGA] [30, 31]) with protoplasmic and exoplasmic halves of the membrane. We show that protoplasmic halves of the flagellar plasma membrane have a high density of Con A and WGA receptors. We conclude that lectin labeling of protoplasmic membrane halves must correspond to transmembrane glycoproteins. Our finding is the first evidence for the transmembrane nature of numerous glycoproteins on a flagellar surface.

## MATERIALS AND METHODS

### Cells

Semen samples from mature boars, *Sus scrofa* (a generous gift of Dr. Larry Johnson, United States Department of Agriculture, Beltsville, MD), were

<sup>1</sup> Abbreviations used in this paper: Con A, concanavalin; WGA, wheat germ agglutinin.

centrifuged (500 g, 5 min), and the cell-rich pellets were washed by successive pelleting and resuspension (three times) in Hanks' balanced salt solution or in PBS. The spermatozoa were fixed in 1.5% glutaraldehyde in PBS, pH 7.4, at ice bath temperature for 1 h, and washed twice in PBS.

## Fracture-Label

**THIN SECTIONS:** Fixed and washed boar spermatozoa were mixed in 30% (wt/vol) BSA in PBS, and centrifuged (2,000 g, 10 min). The pellet of BSA cells was gelled by the addition of glutaraldehyde to a final concentration of 1%. In some samples, glutaraldehyde-fixed human erythrocytes were mixed with the sperm cells as an internal control of the freeze-fracture process: patterns of lectin labeling of freeze-fractured erythrocytes were previously established in this laboratory (42); erythrocytes are a reliable marker for surfaces exposed in gels by slicing at room temperature because, in these instances, the red blood cells are always separated in toto (never cross-fractured) with gel surfaces. The gels were sliced, impregnated in 30% glycerol in PBS (3 h), frozen in partially solidified Freon 22, and fractured in liquid nitrogen with a glass pestle (27, 29, 33). Fractured gel fragments were thawed, deglycerinated, and labeled with Con A-peroxidase-gold or WGA-ovomucoid-gold, as described below (see Cytochemistry). The samples were then processed for thin-section electron microscopy.

Other samples of fixed and washed sperm cells were precoated with cationized ferritin in PBS, pH 7.2 (1 mg/ml, Miles Biochemicals, Elkhart, IN) before fracture-label. Three successive incubations of 15 min were performed to assure saturation of all anionic sites available at the sperm surface. Coated spermatozoa were washed in PBS, and mixed in 30% BSA in PBS. BSA cell gels were obtained by glutaraldehyde cross-linking, and processed for freeze-fracture and WGA-ovomucoid-colloidal-gold labeling (see Cytochemistry).

**PLATINUM-CARBON REPLICAS:** Fixed and washed boar spermatozoa were impregnated in 30% glycerol in PBS, and mixed in a solution of 30% BSA in 30% glycerol (in PBS). The specimens were freeze-fractured with a scalpel, as described before (27), or "sandwiched" between two glass coverslips (28). For the "sandwich" method, small droplets of the mixture were dispersed on precleaned glass coverslips that were superimposed on other coverslips paved with glutaraldehyde (3% in 30% glycerol/PBS). Both types of preparations were frozen in the liquid phase of partially solidified Freon 22, and transferred to liquid nitrogen. Freeze-fracture of "sandwiched" BSA cell gels was performed by mechanical separation of complementary coverslips immersed in liquid nitrogen. The specimens were thawed, deglycerinated, and labeled with Con A-peroxidase-gold or WGA-ovomucoid-gold, as described below (see Cytochemistry). Washed specimens were fixed in 1% osmium tetroxide in veronal buffer for 30 min, dehydrated in ethanol, and critical-point-dried in ethanol/carbon dioxide (27). The fractured gels were shadowed with platinum/carbon in a Balzers 301 apparatus. Replicas of the fracture-faces were isolated by digestion of the gel in sodium hypochloride, and mounted on formvar-coated grids for electron-microscopic observation.

## Cytochemistry

Samples of isolated cells or BSA-sperm gels were incubated in solutions of Con A (0.25 mg/ml) or WGA (0.25 mg/ml) in Sorensen's phosphate buffer, 4% polyvinylpyrrolidone, pH 7.4, for 1 h at room temperature (Con A) or 37°C (WGA). Controls were preincubated in lectin-competitive sugars—0.4 M methyl- $\alpha$ -D-mannopyranoside (Con A experiments) or 0.4 M *N*-acetyl-D-glucosamine (WGA experiments)—for 15 min, followed by incubation in the lectin and the sugar as described above. After washing in Sorensen's buffer, the samples were labeled in a colloidal gold/horseradish peroxidase complex (33–35) (Con A experiments) or in ovomucoid-coated colloidal gold (34–36) (WGA experiments), for 3 h at 4°C. All samples were washed in Sorensen's buffer and processed either for platinum/carbon replication or for thin-section electron microscopy.

## Processing for Thin-Section Electron Microscopy

Gel fragments were postfixated in a solution of 2% osmium tetroxide and 1% potassium ferricyanide (37–39) in veronal buffer, stained en bloc with uranyl acetate (5 mg/ml) in the same buffer, pH 5.8, dehydrated in acetone, and embedded in Epon 812. Thin sections were observed by transmission electron microscopy after counterstaining with lead citrate only.

## RESULTS

### Ultrastructure of Boar Sperm Flagella

Interpretation of our results requires a brief review of the general morphology of the boar sperm flagellum. The central

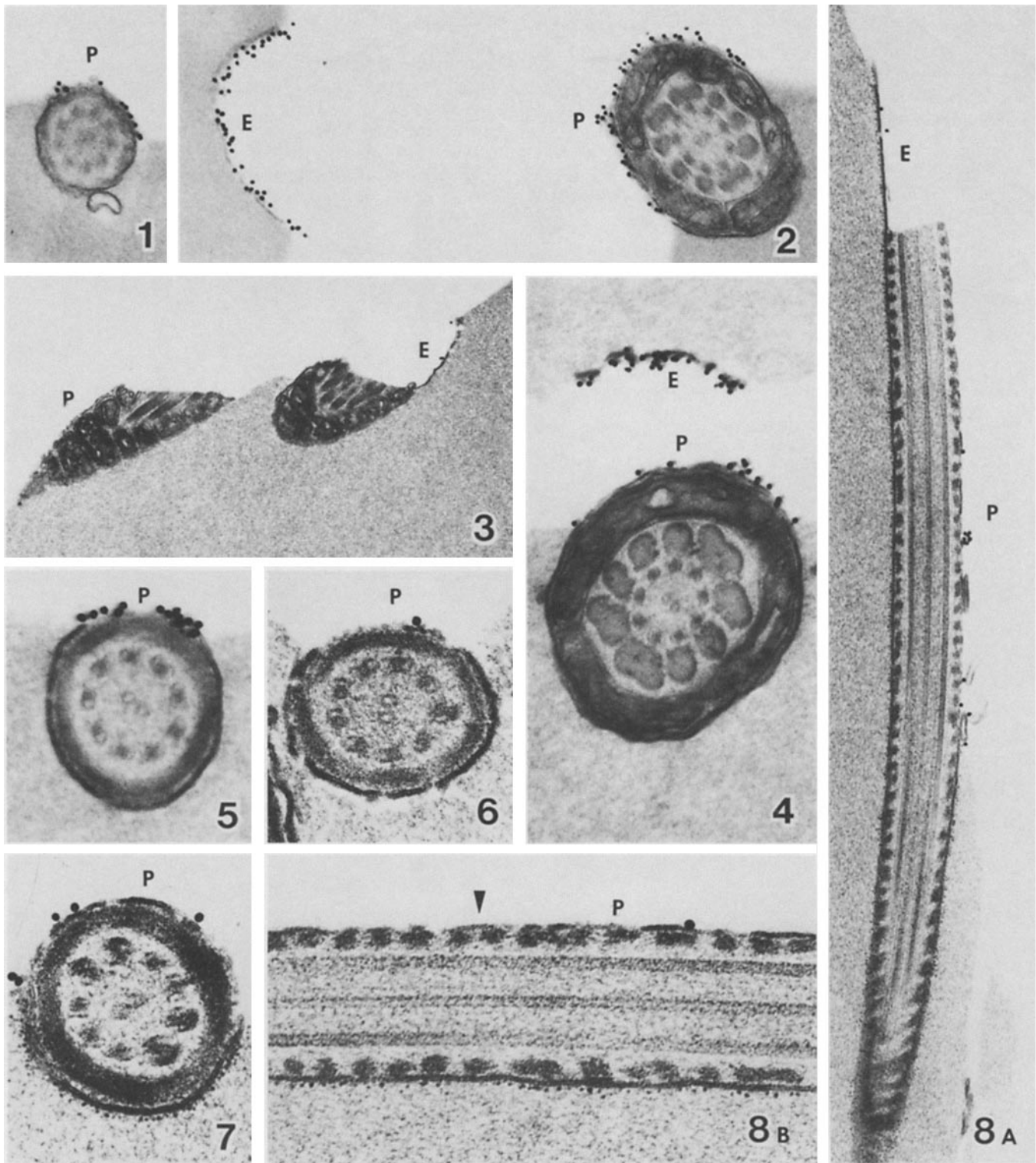
component of the flagellum of boar spermatozoa is a 9 + 2 axoneme. Flagella of mammalian sperm are differentiated into two major segments: the midpiece and the principal piece (for review see reference 41). At the midpiece, the axoneme is surrounded by nine dense fibers that are, on the outside, circumferentially covered by mitochondria (illustrated here in Figs. 2–4). At its proximal end, the dense fibers of the midpiece fuse to form the connecting piece between sperm head and sperm tail. At the principal piece, the longest segment of the sperm flagellum, the axoneme is surrounded only by transversal rings of fibrous material (illustrated here in Figs. 5–8) that terminate short of the distal end of the axoneme (illustrated here in Fig. 1).

### Thin-Section Fracture-Label

Similar to what we observed in sperm heads (28), a notable preservation of the fine structure of boar sperm flagella was found in cells submitted to thin-section fracture-label. Moreover, due to BSA embedding of sperm cells after fixation, the flagellar membrane did not show the usual wrinkling artifact observed when spermatozoa are routinely processed without the support of a cross-linked protein matrix (40). The membrane halves of flagella are seen, in thin sections, as interrupted trilaminar profiles (see Fig. 8B), similar to what was described in other fracture-labeled cells and tissues (26, 28, 32, 41–43). This appearance of membrane halves results from reorganization of membrane apolar groups into bimolecular structures upon exposure of freeze-fracture-induced monolayers to an aqueous environment, on thawing of the preparations (see references 26 and 32 for evidence and detailed discussion of the process).

Both protoplasmic and exoplasmic membrane halves of the boar sperm flagellum show high density of Con A and WGA binding sites visualized by gold/protein complexes (Figs. 1, 2, 4, and 5). This is best seen in gel "cracks" because they provide complementary views of freeze-fractured membranes (Fig. 2). Labeling was virtually absent on membrane halves of flagella incubated in the lectins in the presence of their competitive sugars (Figs. 3 and 6). Drastic reduction (70% or more) of WGA labeling was also found on membrane halves of sperm flagella coated with cationized ferritin prior to freeze-fracture (Figs. 7 and 8).

We observed also thin sections of freeze-fractured gels containing glutaraldehyde-fixed human erythrocytes, in addition to sperm cells. The presence of erythrocytes in sperm-BSA gels was used to identify faces induced by slicing of the gel at room temperature rather than by freeze-fracture: in previous studies (26, 32), we demonstrated that in genuine freeze-fracture edges erythrocytes are frequently cross-fractured; in contrast, gel faces due to slicing at room temperature never display cross-cut erythrocytes as they partition in toto with either side. In addition, the fractured edges of the gels were inspected for frayed edges, an additional signal for a gel "cut" induced at room temperature. In these preparations, labeling patterns of spermatozoa as well as the ultrastructure of their fractured membranes were similar to those reported above. It should be noted that because the gels are crushed into very small fragments, the possibility of observing a "cut" face is far smaller than that of observing a freeze-fracture face since the total surface of freeze-fracture generated during crushing of gels, under liquid nitrogen, far exceeds the original surface of the ("cut") gel piece.



FIGURES 1-8 Thin sections of boar sperm flagella embedded in BSA, freeze-fractured, and labeled with complexes of Con A-peroxidase-gold (Figs. 1-3) or WGA-ovomucoid-gold (Figs. 4-8). Protoplasmic membrane halves (*P*) of the principal piece (Fig. 1 [ $\times 48,000$ ] and Fig. 5 [ $\times 115,000$ ]) and of the midpiece (Fig. 2 [ $\times 50,000$ ] and Fig. 4 [ $\times 61,000$ ]) of flagella are well marked by both Con A (Figs. 1 and 2) and WGA (Figs. 4 and 5). Complementary membrane halves (*P* and *E*) are shown in Figs. 2 and 4. Decrease in lectin-gold labeling is observed in control experiments (Con A incubation in presence of methyl- $\alpha$ -D-mannopyranoside, Fig. 3 [ $\times 30,000$ ], WGA incubation in presence of *N*-acetyl-D-glucosamine, Fig. 6 [ $\times 115,000$ ]). Precoating of flagella with cationized ferritin results in decrease of WGA labeling on membrane halves (Fig. 7 [ $\times 130,000$ ] and 8A [ $\times 44,000$ ]). Membrane halves appear as interrupted trilaminar profiles (Fig. 8B, arrowhead [ $\times 101,000$ ]).

### Critical-Point Drying (CPD) Fracture-Label

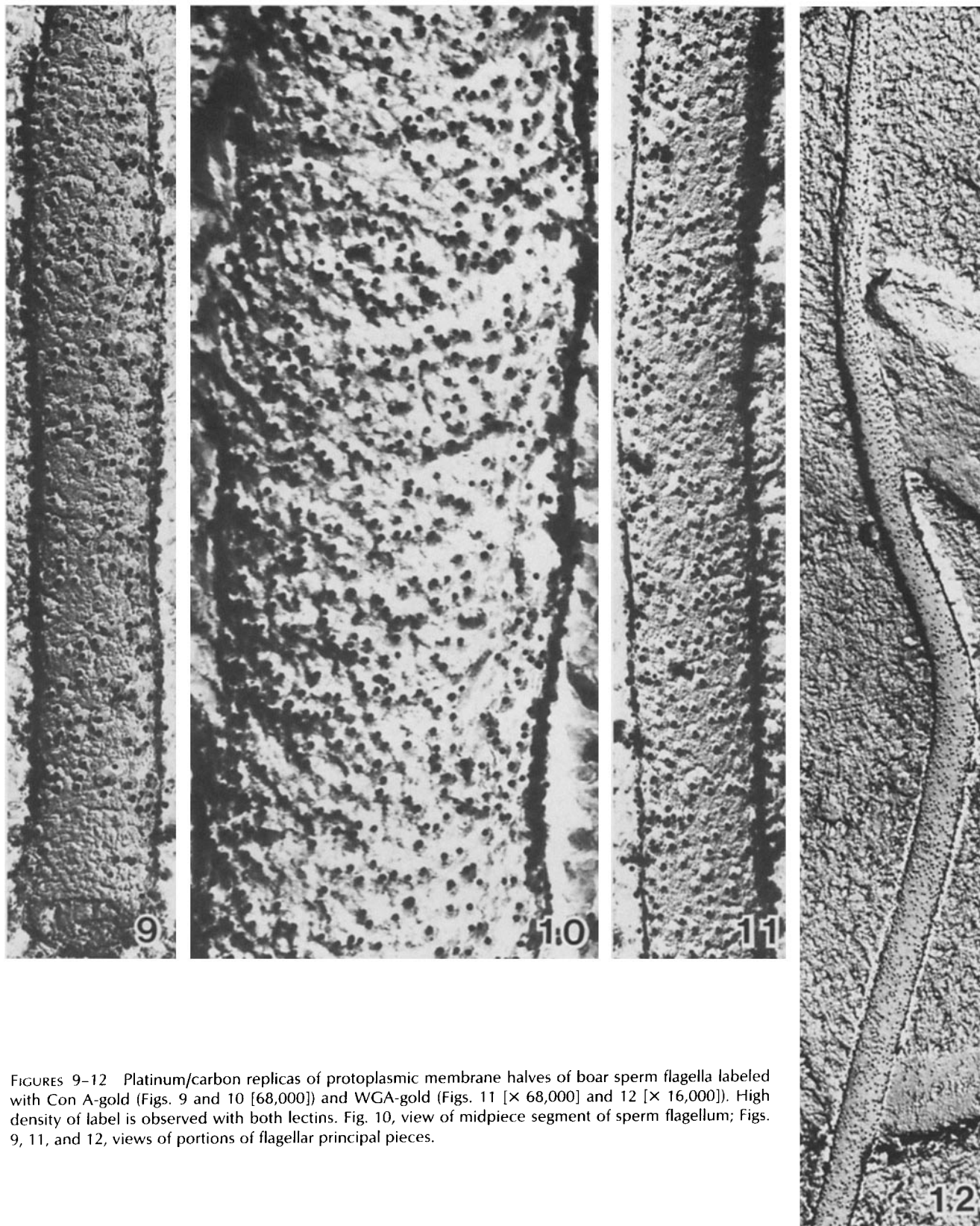
In these preparations, face views of cleaved flagellar membranes are obtained. They contrast with the images seen in

thin-sections where prolonged longitudinal views of membrane halves (as shown in Fig. 8A) are rarely obtained (see reference 28 for explanation). In critical-point drying specimens, reorganization of freeze-fracture membrane halves re-

sults in a rugose structure (Fig. 9) where membrane-intercalated particles are not identifiable (27, 28, 41-43).

Observation of replicas of boar sperm flagella illustrated clearly the high density of both Con A and WGA receptors along protoplasmic membrane halves of the different seg-

ments of the sperm tail (Figs. 9-12). In critical-point drying preparations, the possibility of confusing surfaces exposed during gel slicing at room temperature with genuine faces produced by freeze-fracture is remote: cut faces are excluded during orientation of the gel fragments to platinum/carbon



FIGURES 9-12 Platinum/carbon replicas of protoplasmic membrane halves of boar sperm flagella labeled with Con A-gold (Figs. 9 and 10 [68,000]) and WGA-gold (Figs. 11 [ $\times 68,000$ ] and 12 [ $\times 16,000$ ]). High density of label is observed with both lectins. Fig. 10, view of midpiece segment of sperm flagellum; Figs. 9, 11, and 12, views of portions of flagellar principal pieces.

shadowing, according to their different texture as observed with the dissecting microscope (27, 41). In frozen "sandwiched" preparations, only fracture faces can be revealed (28). The patterns of labeling were similar in both types of critical-point drying specimens and were consistent with the observations made by thin-section "fracture-label."

## DISCUSSION

We characterize here the topology and density of Con A and WGA binding glycoconjugates on a flagellar surface through the analysis of the partition and planar distribution of lectin-gold markers on membrane halves, as induced by freeze-fracture of glutaraldehyde-fixed boar sperm cells. We show that Con A and WGA receptors partition with both protoplasmic and exoplasmic halves of the membrane.

Lectins interact with sugar residues of oligosaccharides of biological membranes (29). Carbohydrates of eucaryotic membranes are exclusively expressed at the exoplasmic surface of the bilayer (28, 44, 45). Therefore, lectin labeling observed either on protoplasmic or on exoplasmic membrane halves must originate from the carbohydrate moieties of glycoconjugates that, in intact cells, are exposed at the outer surface of the plasma membrane. As freeze-fracture splits biological membranes through its hydrophobic plane (46, 47), we conclude that labeling on protoplasmic halves results from dragging, during fracture, of oligosaccharides of transmembrane glycoproteins across the outer (exoplasmic) half of the membrane. Previous comparisons on the partition of the major integral proteins of human erythrocytes with freeze-fracture membrane halves suggested the operation of a stochastic process that reflects the relative expression of each species of transmembrane protein at each side of the membrane as well as its interaction with components of the membrane skeleton (26, 42). We showed that glycoporphin, preferentially expressed at the outer surface and without linkages to the membrane skeleton (48, 49), partitions preferentially with the outer half of the erythrocyte membrane while band 3, which has a large hydrophilic segment exposed at the inner surface and known associations to the membrane skeleton (50, 51), partitions preferentially with the inner half of the membrane (26, 42). Should this interpretation prove correct, lectin labeling of protoplasmic membrane halves suggests that the transmembrane glycoproteins of the sperm flagella are preferentially expressed at the inner surface and/or linked to submembranous components. When the balance of associations of integral proteins is changed in favor of the outer side of the membrane, obtained here through binding of cationized ferritin to the flagellar surface, labeling of protoplasmic membrane halves suffers drastic reduction (Figs. 7 and 8). Lectin labeling of exoplasmic membrane halves is more difficult to ascribe. It may correspond to glycolipids, peripheral and integral glycoproteins; evidence for this interpretation is retrieved on our previous "fracture-label" studies on the partition of lectins with plasma membrane halves of *Acanthamoeba castellanii* (52), and of human erythrocytes (26, 42).

Comprehensive models on the molecular basis of flagellar surface motility proposed by Dentler (3) and Bloodgood (14) postulate the central role of transmembrane membrane proteins on the force transduction from the membrane cytoskeleton or axonemal microtubules to the motile surface receptors. These surface receptors belong to a high-molecular-weight glycoprotein (6, 15); their motility is reversibly inhibited by cytoskeleton disruptors (15). Flagellar surface motility

has been studied using *Chlamydomonas* as the major experimental model because they are easy to grow in the laboratory and immobile mutants are available (3, 7). Surface motility similar to that observed on flagellar membranes has also been found in fibroblasts (53-56), sea urchin blastula cells (57), and neuronal axons (58). Our results are referred to the flagellar segment of boar sperm cells. Structural and cytochemical studies have documented the similarity of sperm tail with flagella from other cells: submembranous cytoskeleton elements, as well as membrane-microtubule "bridges," were described on mammalian sperm tail (2); ATPase activity, detected cytochemically by lead phosphate deposition, was also reported on the submembranous cytoplasm of the sperm tail (20, 24). Our "fracture-label" results provide the first experimental evidence for the transmembrane topology of numerous glycoproteins on a flagellar membrane; they are consistent with models (3, 14) that envisage glycoproteins of flagella as transmembrane couplers of surface receptors with submembranous elements.

We thank Mr. Clifford Parkison for technical assistance.

Received for publication 14 November 1983, and in revised form 22 May 1984.

## REFERENCES

- Allen, R. D. 1968. A reinvestigation of cross-sections of cilia. *J. Cell Biol.* 37:825-831.
- Olson, G. E., and R. W. Linck. 1977. Observations of the structural components of flagellar axonemes and central pair microtubules from rat sperm. *J. Ultrastruct. Res.* 61:21-43.
- Dentler, W. L. 1981. Microtubule-membrane interactions in cilia and flagella. *Int. Rev. Cytol.* 72:1-47.
- Gibbons, I. R. 1981. Cilia and flagella of eukaryotes. *J. Cell Biol.* 91:1075-1245.
- Lewin, R. A. 1952. Studies on the flagella of algae. I. General observations on *Chlamydomonas moewusii* gerloff. *Biol. Bull.* 103:74-79.
- Bloodgood, R. A. 1981. Dynamic properties of the flagellar surface. *Symp. Soc. Exp. Biol.* 35:353-380.
- Bloodgood, R. A. 1981. Flagellum as a model system for studying dynamic cell-surface events. *Cold Spring Harbor Symp. Quant. Biol.* 46:683-693.
- Satir, P. 1968. Studies on cilia. III. Further studies on the cilium tip and a "sliding filament" model of ciliary motility. *J. Cell Biol.* 39:77-94.
- Douglas, G. J. 1975. Sliding filaments in sperm flagella. *J. Theor. Biol.* 53:247-252.
- Gibbons, I. R. 1975. The molecular basis of flagellar motility in sea urchin spermatozoa. In *Molecules and Cell Movement*. S. Inoué and R. E. Stephens, editors. Raven Press, New York 207-232.
- Goodenough, U. W., and J. E. Heuser. 1982. Substructure of the outer dynein arm. *J. Cell Biol.* 95:798-815.
- Johnson, K. A., and J. S. Wall. 1983. Structure and molecular weight of the dynein ATPase. *J. Cell Biol.* 96:669-678.
- Bloodgood, R. A. 1977. Motility occurring in association with the surface of the *Chlamydomonas* flagellum. *J. Cell Biol.* 75:983-989.
- Bloodgood, R. A., E. M. Leffler, and A. T. Bojczuk. 1979. Reversible inhibition of *Chlamydomonas* flagellar surface motility. *J. Cell Biol.* 82:664-674.
- Bloodgood, R. A., and G. S. May. 1982. Functional modification of the *Chlamydomonas* flagellar surface. *J. Cell Biol.* 93:88-96.
- Ringo, D. L. 1967. Flagellar motion and fine structure of the flagellar apparatus on *Chlamydomonas*. *J. Cell Biol.* 33:543-571.
- Gilula, N. B., and P. Satir. 1972. The ciliary necklace. A ciliary membrane specialization. *J. Cell Biol.* 53:494-509.
- Sattler, C. A., and L. A. Staehelin. 1974. Ciliary membrane differentiations in tetrahymena pyriformis. *J. Cell Biol.* 62:473-490.
- Lansing, A. I., and F. Larry. 1961. Localization of ATPase in rotifer cilia. *J. Biophys. Biochem. Cytol.* 11:498-501.
- Nagano, T. 1965. Localization of adenosine triphosphate activity in the rat sperm tail as revealed by electron microscopy. *J. Cell Biol.* 25:101-112. (Suppl.)
- Dentler, W. L. 1977. Fine structural localization of phosphatases in cilia and basal bodies of *Tetrahymena pyriformis*. *Tissue Cell.* 9:209-222.
- Bessen, M., R. B. Fay, and G. B. Witman. 1980. Calcium control of waveform in isolated flagellar axonemes of *Chlamydomonas*. *J. Cell Biol.* 86:446-455.
- Doughty, M. J. 1978. Ciliary Ca<sup>2+</sup>-ATPase from the excitable membrane of paramecium. Some properties and purification by affinity chromatography. *Comp. Biochem. Physiol.* 60B:339-345.
- Baccetti, B., A. G. Burrini, R. Dallai, and V. Pallini. 1979. The dynein electrophoretic bands in axonemes naturally lacking the inner or the outer arm. *J. Cell Biol.* 80:334-340.
- Dentler, W. L., M. M. Pratt, and R. E. Stephens. 1980. Microtubule-membrane interactions in cilia. II. Photochemical cross-linking of bridge-structures and the identification of a membrane-associated dynein-like ATPase. *J. Cell Biol.* 84:381-403.
- Pinto da Silva, P., C. Parkison, and N. Dwyer. 1981. Fracture-label: cytochemistry of freeze-fractured faces in the erythrocyte membrane. *Proc. Natl. Acad. Sci. USA.* 78:343-347.
- Pinto da Silva, P., B. Kachar, M. R. Torrisi, C. Brown, and C. Parkison. 1981. Freeze-fracture cytochemistry: replicas of critical point dried cells and tissues after "fracture

- label." *Science (Wash. DC)*, 213:230-233.
28. Aguas, A. P., and P. Pinto da Silva. 1983. Regionalization of transmembrane glycoproteins in the plasma membrane of boar sperm head is revealed by fracture-label. *J. Cell Biol.* 97:1356-1364.
  29. Nicolson, G. L. 1974. The interaction of lectins with animal cell surfaces. *Int. Rev. Cytol.* 39:89-190.
  30. Bhavanandan, V. P., and A. W. Katlic. 1979. The interaction of wheat germ agglutinin with sialoglycoproteins. The role of sialic acid. *J. Biol. Chem.* 254:4000-4008.
  31. Peters, B. P., S. Ebism, I. J. Goldstein, and M. Flashner. 1979. Interaction of wheat germ agglutinin with sialic acid. *Biochemistry*. 18:5505-5511.
  32. Pinto da Silva, P., C. Parkison, and N. Dwyer. 1981. Freeze-fracture cytochemistry: thin sections of cells and tissues after labeling of fracture-faces. *J. Histochem. Cytochem.* 29:917-928.
  33. Ackerman, G. A., and W. H. Freeman. 1979. Membrane differentiation of developing hemic cells of the bone marrow demonstrated by changes on concanavalin A surface labeling. *J. Histochem. Cytochem.* 27:1613-1623.
  34. Geoghegan, W. D., and G. A. Ackerman. 1977. Adsorption of horseradish peroxidase, ovomucoid and anti-immunoglobulin to colloidal gold for the indirect detection of concanavalin A, wheat germ agglutinin and goat antihuman immunoglobulin G on cell surfaces at the electron microscope level: a new method, theory and application. *J. Histochem. Cytochem.* 25:1187-1200.
  35. Horisberger, M., and J. Rosset. 1977. Colloidal gold, a useful marker for transmission and scanning electron microscopy. *J. Histochem. Cytochem.* 25:295-305.
  36. Ackerman, G. A. 1979. Distribution of wheat germ agglutinin binding sites on normal human and guinea pig marrow cells: an ultrastructural histochemical study. *Anat. Rec.* 195:641-658.
  37. Karnovsky, M. J. 1971. Use of ferrocyanide-reduced osmium tetroxide in electron microscopy. *Am. Soc. Cell Biol. Abstr.*, New Orleans, 1971. p. 146.
  38. Russel, L., R. Peterson, and M. Freund. 1979. Direct evidence for formation of hybrid vesicles by fusion of plasma and outer acrosomal membranes during the acrosome reaction in boar spermatozoa. *J. Exp. Zool.* 208:41-56.
  39. Goldfisher, S., Y. Kres, B. Coltoff-Schiller, and J. Berman. 1981. Primary fixation in osmium-potassium ferricyanide: the staining of glycogen, glycoproteins, elastine, an intranuclear reticular structure, and intercisternal trabeculae. *J. Histochem. Cytochem.* 29:1105-1111.
  40. Fawcett, D. W. 1970. A comparative view of sperm ultrastructure. *Biol. Reprod.* 2:90-127. (Suppl.)
  41. Pinto da Silva, P., M. R. Torrisi, and B. Kachar. 1981. Freeze-fracture cytochemistry: localization of wheat-germ agglutinin and concanavalin A binding sites on freeze-fractured pancreatic cells. *J. Cell Biol.* 91:361-372.
  42. Pinto da Silva, P., and M. R. Torrisi. 1982. Freeze-fracture cytochemistry: partition of glycoporphin in freeze-fractured human erythrocyte membranes. *J. Cell Biol.* 93:463-469.
  43. Torrisi, M. R., and P. Pinto da Silva. 1982. T lymphocyte heterogeneity: wheat germ agglutinin labeling of transmembrane glycoproteins. *Proc. Natl. Acad. Sci. USA.* 79:5671-5674.
  44. Rothman, J., and J. Lenard. 1977. Membrane asymmetry. *Science (Wash. DC)*. 195:743-753.
  45. Robertson, J. D. 1981. Membrane structure. *J. Cell Biol.* 91:189s-204s.
  46. Branton, D. 1966. Fracture faces of frozen membranes. *Proc. Natl. Acad. Sci. USA.* 55:1048-1055.
  47. Pinto da Silva, P., and D. Branton. 1970. Membrane splitting in freeze-etching: covalently bound ferritin as a membrane marker. *J. Cell Biol.* 45:598-605.
  48. Fukuda, M., Y. Eshdat, G. Tarone, and V. T. Marchesi. 1978. Isolation and characterization of peptides derived from the cytoplasmic segment of band 3, the predominant intrinsic membrane protein of the human erythrocyte. *J. Biol. Chem.* 253:2419-2428.
  49. Steck, T. L. 1978. The band 3 protein of the human red cell membrane: a review. *J. Supramol. Struct.* 8:311-324.
  50. Marchesi, V. T. 1979. Functional proteins of the human red cell membrane. *Semin. Hematol.* 16:3-20.
  51. Branton, D., C. M. Cohen, and J. Tyler. 1981. Interaction of cytoskeletal proteins on the erythrocyte membrane. *Cell*. 24:24-32.
  52. Barbosa, M. L. F., and P. Pinto da Silva. 1983. Restriction of glycolipids to the outer half of a plasma membrane: concanavalin A labeling of membrane halves of *Acanthamoeba castellanii*. *Cell*. 36:959-966.
  53. Abercrombie, M., J. E. M. Heaysman, and S. M. Pegrum. 1970. The locomotion of fibroblasts in culture. III. Movement of particles on the dorsal surface of the leading lamella. *Exp. Cell Res.* 62:389-398.
  54. Harris, A., and G. Dunn. 1972. Centripetal transport of attached particles on both surfaces of moving fibroblasts. *Exp. Cell Res.* 73:519-523.
  55. Harris, A. K. 1973. Cell surface movements related to cell locomotion. *Ciba Found. Symp.* 14:3-26.
  56. Albrecht-Buehler, G., and R. D. Goldman. 1976. Microspike-mediated particle transport towards the cell body during early spreading of 3T3 cells. *Exp. Cell Res.* 97:329-339.
  57. Bloodgood, R. A. 1980. Direct visualization of dynamic membrane events in cilia. *J. Exp. Zool.* 213:293-295.
  58. Koda, L. Y., and L. M. Partlow. 1976. Membrane marker movement on sympathetic axons in tissue culture. *J. Neurobiol.* 7:157-172.