




ORIGINAL RESEARCH

External validation of the prognostic relevance of the advanced lung cancer inflammation index (ALI) in pancreatic cancer patients

Dominik Andreas Barth¹  | Carina Brenner¹ | Jakob Michael Riedl¹ | Felix Prinz¹ | Eva Valentina Klocker¹ | Konstantin Schlick² | Peter Kornprat³ | Karoline Lackner⁴ | Herbert Stöger¹ | Michael Stotz¹ | Armin Gerger^{1,5}  | Martin Pichler^{1,6} 

¹Division of Clinical Oncology, Department of Medicine, Comprehensive Cancer Center Graz, Medical University of Graz, Graz, Austria

²3rd Medical Department with Hematology and Medical Oncology, Hemostaseology, Rheumatology and Infectious Diseases, Laboratory for Immunological and Molecular Cancer Research, Oncologic Center, Paracelsus Medical University Salzburg, Salzburg, Austria

³Division of General Surgery, Department of Surgery, Medical University of Graz, Graz, Austria

⁴Institute of Pathology, Medical University of Graz, Graz, Austria

⁵Center for Biomarker Research in Medicine, Graz, Austria

⁶Department of Experimental Therapeutics, The University of Texas MD Anderson Cancer Center, Houston, TX, USA

Correspondence

Martin Pichler, Division of Clinical Oncology, Department of Medicine, Medical University of Graz, Auenbruggerplatz 15, 8036 Graz, Austria. Email: martin.pichler@medunigraz.at

Funding information

This work was supported by a research grant of the Austrian National Bank (Jubiläumsfonds No. 17333) to Michael Stotz. This work was supported by the Austrian Science Fund (FWF) (DK-MCD W1226, to MP).

Abstract

Background: The advanced lung cancer inflammation index (ALI) was first introduced for prognosis prediction in lung cancer patients and since then evaluated in several other malignancies. However, in pancreatic cancer (PC) the ALI and its prognostic utility were only investigated in a comparably small and specific cohort of locally advanced PC patients treated with chemoradiotherapy.

Methods: In our single-center cohort study, we included 429 patients with histologically verified PC who were treated between 2003 and 2015 at our academic institution. The ALI was defined as body mass index (BMI; kg/m²) × serum albumin levels (g/dL)/neutrophil-lymphocyte ratio (NLR) and we defined the optimal cutoff for biomarker dichotomization by ROC-analysis. Kaplan-Meier method as well as uni- and multivariate Cox regression Hazard proportional models were implemented to assess the prognostic potential of ALI in PC patients. We considered cancer-specific survival (CSS) as the primary endpoint of the study.

Results: The ALI showed a significant negative correlation with CA19-9 levels and C-reactive protein levels whereas we found an association with localized tumor stage and better performance status ($P < .05$ for all mentioned variables). As opposed to patients with a high ALI, decreased ALI was significantly associated with shorter CSS (HR = 0.606, 95% CI: 0.471-0.779, $P = .001$). Multivariate analysis demonstrated tumor grade, tumor stage, chemotherapy, C-reactive protein levels, and CA19-9 levels to independently predict for CSS (all $P < .05$). In contrast the ALI failed to independently predict for CSS in the performed multivariate models (HR = 0.878, 95% CI: 0.643-1.198, $P = .411$).

Conclusion: In this large cohort of PC patients, the ALI did not complement existing clinicopathological factors for outcome determination.

KEYWORDS

advanced lung cancer inflammation index, biomarker, pancreatic cancer, prognosis

This is an open access article under the terms of the Creative Commons Attribution License, which permits use, distribution and reproduction in any medium, provided the original work is properly cited.

© 2020 The Authors. *Cancer Medicine* published by John Wiley & Sons Ltd.

1 | INTRODUCTION

Pancreatic cancer (PC) is the fourth most common cause of cancer related death in both men and women and in 2019 approximately 56,770 patients are expected to be newly diagnosed with PC in the United States.¹ Although general progress in cancer screening and therapy is constantly made, estimated survival rates of PC remain poor with a 5-year overall survival (OS) of only 5%.² Prognostic variables at the time of cancer diagnosis may be helpful in estimation of risk of death, patient counseling, and dividing patients into different risk groups to stratify in clinical trials or select more aggressive treatment approaches.

Cancer is closely associated with inflammation³ and within the last years, cost-effective and easily available blood-based prognostic biomarkers, which may influence clinical decision-making, have been studied in various cancer entities.⁴⁻⁷ In PC, routinely assessed indicators of inflammation such as the C-reactive protein (CRP) level,⁸ lymphocyte-monocyte ratio,⁹ neutrophil-lymphocyte ratio (NLR),^{10,11} or platelet size as a marker of inflammation-linked platelet activation¹² were proposed as potential prognostic biomarkers.

Recently, Jafri et al¹³ introduced the advanced lung cancer inflammation index (ALI) as a novel prognostic biomarker for non-small cell lung cancer (NSCLC) patients. The ALI combines the nutritional markers body mass index (BMI) and serum albumin levels with the systemic inflammation response-based NLR.⁹ A decreased ALI significantly predicted adverse prognosis in NSCLC patients. Since then, the ALI has been validated in many different settings of treatment and disease in NSCLC¹⁴⁻²⁰ and additionally in small cell lung cancer (SCLC).^{21,22} Additionally, in various other cancer entities including esophageal cancer,²³ colorectal cancer,²⁴ squamous head and neck cancer,²⁵ and diffuse large B-cell lymphoma²⁶ a significant correlation of low ALI and a detrimental impact on survival rates has been robustly shown.

In PC, the constituents of the ALI, namely the NLR, BMI, and serum albumin levels, and their individual prognostic impact have already been investigated.^{10,27-29} Additionally, a recently published study evaluated its potential prognostic value in locally advanced PC patients treated with chemoradiotherapy, however, in a relatively small sample size.³⁰

Therefore, our study aimed to evaluate and externally validate the usefulness of the ALI as a prognostic biomarker for cancer-specific survival (CSS) in a large cohort of PC patients.

2 | MATERIALS AND METHODS

2.1 | Study design & patients

In this retrospective single-center cohort study, patients with histologically verified pancreatic cancer of all clinical stages

who were treated at the Department of Internal Medicine, Division of Oncology, Medical University of Graz, Austria, between December 2003 and October 2015 were included. We excluded patients with missing parameters for appropriate calculation of the ALI (Figure S1). In total, 429 patients were included in the study. Patient data were obtained from our departments own internal documentation system, our hospitals paper-chart documentation as well as from the electronic health record system of our hospital trust (including all state hospitals in the Austrian state of Styria). As for the change of the TNM system regarding the classification of pancreatic cancer during the study period we uniformly adjusted the tumor stages according to the 7th edition. Routinely assessed laboratory parameters and weight were retrieved within 2 weeks prior a surgical intervention or the initiation of chemotherapy at the closest timepoints to either one of these events. Only laboratory values measured at our hospital were included, to eliminate possible bias due to different laboratory measurements. Patient's postoperative surveillance included routine clinical and laboratory examination and imaging methods. Follow-up evaluations were performed every 3 months within the first 3 years, 6 months for 5 years and annually thereafter for curative resected tumor stages. Dates of death for survival analysis were obtained from the central registry of the Austrian Bureau of Statistics or our own documentation.

2.2 | Statistical analysis

Cancer-specific survival was considered the primary endpoint of the study and was defined as the time (in months) from the histologically confirmed diagnosis to cancer-related death. We reported continuous variables as medians [25th-75th percentile], whereas categorical variables were reported as absolute counts (%). The ALI was defined as: $ALI = BMI (kg/m^2) \times albumin (g/dL) / NLR ([absolute counts])$. Associations between the ALI and clinicopathological parameters were evaluated using Spearman's rank correlation analysis. ROC-curve analysis was conducted to find the optimal cutoff for the dichotomization of the ALI. Kaplan-Meier estimators were used to calculate CSS for the two groups and compared by log-rank tests. Uni- and multivariate Cox proportional models were implemented. Hazard ratios (HRs) were displayed as relative risks with the corresponding 95% confidence interval. Two-sided *P*-values < .05 were considered significant. All statistical analyses were performed using MedCalc version 3.1 software or SPSS® (Statistical Package for Social Sciences) Version 23.0.

Ethical approval for the study was given by the ethics committee of our institution (Ethikkommission der Medizinischen Universität Graz, IRB00002556), before the execution of any patient-related activities (No. 25-458 ex 12/13). Since the

local ethics committee particularly gave a “waiver of consent” for our retrospective database study, written informed consent was not obtained from individual patients. All investigations were performed in accordance with the principles embodied in the declaration of Helsinki.

3 | RESULTS

In total, 429 patients (193 female and 236 male) were included in this study, 305 of which had synchronous metastatic disease. The median age at diagnosis was 65 years (interquartile range: 57-72 years; minimum: 37 years, maximum: 86 years). The median level of the tumor marker CA19-9 was 816 U/l, whereas the median ALI was 28.71. Median OS time was 9 months and 388 patients had already died during the follow-up period. Baseline data of the study population are displayed in Table 1.

A low ALI was significantly correlated with high tumor stage IV ($P = .016$) and a decreased Karnofsky performance status of <80 ($P = .001$), whereas an association with tumor grade, age, gender, and administration of chemotherapy was not observed (data not shown).

Next, to test whether the ALI is correlated with other clinicopathological parameters, we performed a Spearman' rank correlation analysis. In our analysis, we found significant negative correlations of the ALI with CA19-9 levels ($R = -0.237$, $P < .01$), age ($R = -0.111$, $P = .021$), and CRP ($R = -0.449$, $P < .01$), respectively. Moreover, a significant positive correlation of CA19-9 and CRP was found ($R = 0.150$, $P = .011$). In order to explore if the ALI was associated with patient's clinical outcome, we applied ROC-analysis (Youden-Index based selection of the cutoff) and calculated an ALI = 43.5 as the best discriminator of survival in our patient cohort. Figure 1 displays the Kaplan-Meier curve analysis for low and high ALI score according to this discriminator and demonstrates a low ALI score as an adverse prognostic marker ($P < .001$, log rank test).

Univariate Cox proportion analysis confirmed a low ALI as a significant prognostic biomarker for CSS (HR = 0.606 [95% CI: 0.471-0.779], $P < .001$), as well as older age (HR = 1.347 [95% CI: 1.101-1.648], $P = .004$), high tumor grade $> G3$ (HR = 1.386 [95% CI: 1.132-1.697], $P = .002$), high tumor stage (HR = 1.481 [95% CI: 1.357-1.616], $P < .001$), administration of chemotherapy (HR = 0.550 [95% CI: 0.423-0.716], $P < .001$), high CA19-9 levels (HR = 1.785 [95% CI: 1.443-2.208], $P < .001$), and high CRP (HR = 1.005 [95% CI: 1.002-1.008], $P = .001$). To test the independent prognostic relevance of the ALI in PC patients, we calculated a multivariate Cox proportional Hazard model including gender, age, administration of chemotherapy, stage, grade, CA19-9 levels, CRP levels, and the ALI. In this model, the ALI could not be confirmed as an independent predictive tool for CSS (HR = 0.878 [95% CI: 0.643-1.198], $P = .411$; Table 2). In the multivariate Cox model, we discovered tumor grade

TABLE 1 Baseline characteristics of the study population

Variable	n (% miss.)	Summary measure
Demographic variables		
Sex	429 (0%)	
Female		193 (45%)
Male		236 (55%)
Age (y)	429 (0%)	65 [57-72]
BMI (kg/m ²)	429 (0%)	24.17 [21.94-27.12]
Karnofsky Index	425 (1%)	80 [80-90]
Tumor variables		
Tumor stage	429 (0%)	/
Stage I + II	/	100 (23.3%)
Stage III	/	23 (5.4%)
Stage IV	/	306 (71.3%)
Tumor grade	429 (0%)	/
Grade 1 + 2	/	255 (59.4%)
Grade 3 + 4	/	174 (40.6%)
Treatment variables		
Surgery	429 (0%)	117 (27.3%)
Chemotherapy	428 (1%)	352 (82.1%)
Laboratory variables		
Neutrophil count (10 ³ /μL)	429 (0%)	4.7 [3.5-6.2]
Lymphocyte count (10 ³ /μL)	429 (0%)	1.3 [1.1-1.8]
NLR	429 (0%)	3.35 [2.44-4.8]
Albumin (g/dL)	429 (0%)	4 [3.7-4.3]
CA19-9	392 (9%)	816 [122.7-6044]
ALI	429 (0%)	28.71 [18.26-43.05]
CRP	429 (0%)	8.2 [2.6-25.1]

Note: Distribution overall and by therapy line. The column “n (% miss.)” shows the number of patients whose values of the respective variable could be collected (% missing). Continuous variables are reported as medians [25th percentile (Q1)-75th percentile (Q3)], whereas absolute frequencies and percentages are used for categorical variables.

Abbreviations: ALI, advanced lung cancer inflammation index; BMI, Body mass index; CRP, C reactive protein; NLR, neutrophil-lymphocyte ratio.

(HR = 1.459 [95% CI: 1.156-1.932], $P = .002$), tumor stage (HR = 1.512 [95% CI: 1.348-1.696], $P < .001$), administration of chemotherapy (HR = 0.433 [95% CI: 0.307-0.610], $P < .001$), high CA19-9 levels (HR = 1.358 [95% CI: 1.050-1.757], $P = .02$), and high CRP levels (HR = 1.004 [95% CI: 1.001-1.008], $P = .009$) as independent predictors of CSS.

4 | DISCUSSION

Our study tested the hypothesis if the ALI score can serve as a convenient and applicable prognostic biomarker in PC patients. However, in our study we could not externally

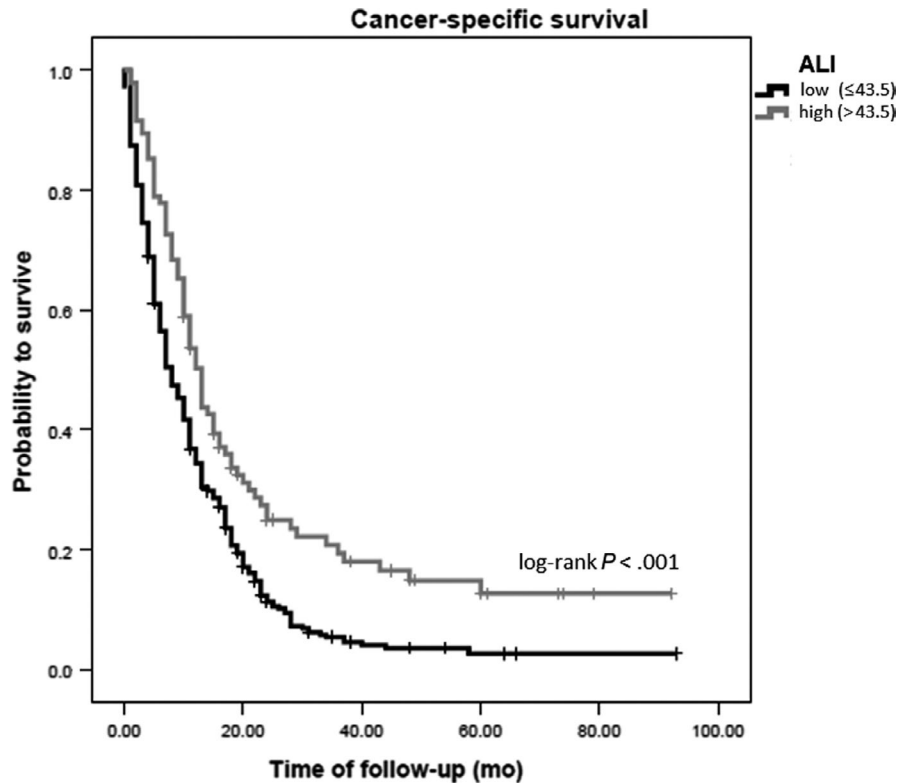


FIGURE 1 Kaplan-Meier curve according to ALI > 43.5 vs ≤ 43.5 for CSS

validate the ALI score as an independent prognostic factor in PC patients. External validation studies are essential before implementing prediction models or prognostic scores in clinical practice. One reason is that prediction models tend to perform better on data on which the score/model were constructed than on new data.³¹ The hypothesis of the ALI score has been generated based on a series of retrospective studies that proposed a prognostic value in SCLC and NSCLC patients in different settings of treatment and disease.¹³⁻²² Moreover, the ALI has been proven to be a significant and reliable predictor of outcome in other cancer types such as esophageal, colorectal, and squamous head and neck cancer, as well as diffuse large B-cell lymphoma.²³⁻²⁶ Recently, the ALI was additionally analyzed in a small cohort including 141 PC patients. This cohort, however, included only patients with locally advanced PC receiving chemoradiotherapy.³⁰ In contrast to this relatively small sample size and specific features in this cohort, our present study is the first to examine the prognostic impact of the pretreatment ALI in a relatively large cohort of PC patients across all tumor stages including chemotherapy and with inclusion of the CRP levels as another systemic inflammation response marker. In our analysis, we found the ALI as a significant marker in univariate analysis, a result that did not prevail after including other clinicopathological parameters into multivariate analysis. As opposed to the results of our present study, Topkan et al³⁰ only recently demonstrated the ALI as a significant and independent predictor for OS as well as progression-free

survival (PFS) in PC patients with locally advanced stages treated with chemoradiotherapy. Besides the specific study cohort of chemoradiotherapy-treated locally advanced patients, the study comprised a smaller sample size ($n = 141$) and only patients with a BMI > 20 kg/m² were included.³⁰ In our study, 46 (10.7%) patients had a BMI of < 20 kg/m², which might be one significant difference as patients with a BMI below 20 are considered to be underweight and cachectic, a feature frequently encountered in metastatic PC patients.³² The background for the failure of the independent prognostic potential of the ALI in our study remains speculative. However, as for the nutritional aspect of the ALI, BMI at times may only be an inaccurate marker of patient's nutritional state. As a result, Kim et al²¹ calculated a modified ALI, replacing the BMI by the L3 muscle index (L3MI), using computer tomography imaging. Nonetheless, although this represents a more accurate quantification of sarcopenia and malnutrition, no significant distinction between the modified ALI and the original ALI calculated using the easy assessable pretreatment BMI was observed.²¹ Furthermore, converse to other cancers of the digestive system, high BMI in adulthood is associated with shorter overall OS of PC patients, whereas high BMI at diagnosis is not significantly related to OS, as confirmed by two meta-analyses.^{27,28} This may be a reason why the ALI could not be validated as a independent prognostic marker in our present study, since the index requires high BMI to be associated with a more favorable outcome, thus leading to an increased ALI. In colorectal and esophageal

TABLE 2 Uni- and multivariate predictors of clinical outcome

Variable	Univariate analysis		Multivariate analysis	
	HR (95% CI)	<i>P</i> -value	HR (95% CI)	<i>P</i> -value
Age at diagnosis (y)				
<65	1 (reference)	.004	1 (reference)	.638
≥65	1.347 (1.101-1.648)		1.062 (0.827 - 1.363)	
Sex				
Female	1 (reference)	.148	1 (reference)	.514
Male	1.160 (0.949-1.419)		1.085 (0.849-1.387)	
Tumor grade				
G1 + G2	1 (reference)	.002	1 (reference)	.002
G3 + G4	1.386 (1.132-1.697)		1.495 (1.156 - 1.932)	
Tumor stage				
I + II	1 (reference)	<.001	1 (reference)	<.001
III + IV	1.481 (1.357-1.616)		1.512 (1.348-1.696)	
Chemotherapy				
No	1 (reference)	<.001	1 (reference)	<.001
Yes	0.550 (0.423-0.716)		0.433 (0.307 - 0.610)	
CA19-9				
<816 U/mL	1 (reference)	<.001	1 (reference)	.02
≥816 U/mL	1.785 (1.443-2.208)		1.358 (1.050-1.757)	
CRP				
Continuous variable	1.005 (1.002 - 1.008)	.001	1.004 (1.001 - 1.008)	.009
ALI				
>43.5	1 (reference)	.001	1 (reference)	.411
≤43.5	0.606 (0.471-0.779)		0.878 (0.643-1.198)	

Note: Hazard ratio of CSS (cancer-specific survival).

Significant of *P*-values ($p < 0.05$) are highlighted in bold.

cancer, which were both comprised in the aforementioned meta-analysis by Han et al,²⁸ a significant association of low ALI and adverse prognosis could be shown.^{23,24} Another constituent of the ALI, a high NLR, is a traditional indicator for systemic inflammatory response and an already known predictor of poor prognosis in PC.^{10,33} In our study, the ALI was significantly negatively correlated with the CRP levels. C-reactive protein levels prevailed as a significant predictor of outcome in the multivariate analysis. However, even after removal of CRP from the multivariate analyses, the ALI was not significantly associated with survival in the multivariate Cox model (HR = 0.853 [95% CI: 0.652-1.118], $P = .249$, data not shown in the results). Last but not least, low albumin levels independently correlate with shorter survival rates in PC.^{29,34} However, the role of albumin levels in PC may remain controversial as a recent retrospective study by Feng et al³⁵ including a validation cohort could not confirm previous results, since low albumin levels were not significantly associated to the survival

outcome. Yet, in the respective study baseline albumin was already higher as in the previous studies, which may explain the different results.³⁵

Although there is strong evidence for the practicality of the ALI through different stages of treatment and disease in various cancer entities, documented by a great number of studies,¹³⁻²⁶ the optimal cutoff value remains controversially. Advanced lung cancer inflammation index cutoffs vary from 18¹³ to 37.67¹⁵ with different methods being used for cutoff determination. Therefore, and because the available studies focus on different treatment settings and tumor stages, a single overall cutoff that applies for all settings and tumor entities may be difficult to be determined. In the current study we chose an optimal cutoff by ROC-curve analysis, which is a common method in biomarker analysis. To date, our cutoff at an ALI of 43.5 is the highest cutoff being used for the discrimination of good and poor risk groups to the best of our knowledge.¹³⁻²⁶ However, even when we used the ALI as a continuous variable in our multivariate Cox model, we

did not observe a significant association of survival (data not shown in the results).

Our study is not without limitations given its retrospective nature. First, we cannot fully exclude selection bias due to the retrospective single-center study design. Second, local or systemic infections of the patients at diagnosis were not assessed, therefore, consequential effects on collected laboratory data may be possible. However, for patients who were fit for surgery or chemotherapy and a relatively short time period for data collection before treatment was chosen, this seems unlikely, since our study lacks external validation further research to externally verify our results is required.

In conclusion, our study could not establish and externally validate the ALI as an independent predictive tool to determine the prognosis of pancreatic cancer patients.

CONFLICT OF INTEREST

The authors declare that there is no conflict of interest.

AUTHOR'S CONTRIBUTIONS

DAB, CB, MP, conceived and designed the study; MP, analyzed the data; DAB, MP, interpretation of the results; DAB, writing—Original Draft Preparation; All authors, Writing—Review & Editing; All authors, Agree with the manuscript's results and conclusions; All authors, ICMJE criteria for authorship read and met.

INFORMED CONSENT

Written informed consent was not obtained from individual patients, since this is not mandated in Austria for retrospective database studies given approval by an ethics committee.

ETHICS STATEMENT

Ethical approval for this study was given by the IRB of the Medical University of Graz prior any patient-related activities were conducted (No.25-458 ex 12/13).

DATA AVAILABILITY STATEMENT

The data that support the findings of this study are not publicly available due to the request of the local ethic committee in order to protect the anonymity of the patients.

ORCID

Dominik Andreas Barth  <https://orcid.org/0000-0003-0812-3024>

Armin Gerger  <https://orcid.org/0000-0002-3888-5401>

Martin Pichler  <https://orcid.org/0000-0002-8701-9462>

REFERENCES

- Siegel RL, Miller KD, Jemal A. Cancer statistics, 2019. *CA Cancer J Clin*. 2019;69(1):7-34.
- Ilic M, Ilic I. Epidemiology of pancreatic cancer. *World J Gastroenterol*. 2016;22(44):9694-9705.
- Mantovani A, Allavena P, Sica A, Balkwill F. Cancer-related inflammation. *Nature*. 2008;454(7203):436-444.
- Dalpiat O, Luef T, Seles M, et al. Critical evaluation of the potential prognostic value of the pretreatment-derived neutrophil-lymphocyte ratio under consideration of C-reactive protein levels in clear cell renal cell carcinoma. *Br J Cancer*. 2017;116(1):85-90.
- Riedl JM, Posch F, Moik F, et al. Inflammatory biomarkers in metastatic colorectal cancer: prognostic and predictive role beyond the first line setting. *Oncotarget*. 2017;8(56):96048-96061.
- Stotz M, Pichler M, Absenger G, et al. The preoperative lymphocyte to monocyte ratio predicts clinical outcome in patients with stage III colon cancer. *Br J Cancer*. 2014;110(2):435-440.
- Barth DA, Riedl JM, Posch F, et al. Critical evaluation of platelet size as a prognostic biomarker in colorectal cancer across multiple treatment settings: a retrospective cohort study. *Clin Transl Oncol*. 2019;21(8):1034-1043.
- Szkandera J, Stotz M, Absenger G, et al. Validation of C-reactive protein levels as a prognostic indicator for survival in a large cohort of pancreatic cancer patients. *Br J Cancer*. 2014;110(1):183-188.
- Stotz M, Szkandera J, Stojakovic T, et al. The lymphocyte to monocyte ratio in peripheral blood represents a novel prognostic marker in patients with pancreatic cancer. *Clin Chem Lab Med*. 2015;53(3):499-506.
- Stotz M, Gerger A, Eisner F, et al. Increased neutrophil-lymphocyte ratio is a poor prognostic factor in patients with primary operable and inoperable pancreatic cancer. *Br J Cancer*. 2013;109(2):416-421.
- Szkandera J, Stotz M, Eisner F, et al. External validation of the derived neutrophil to lymphocyte ratio as a prognostic marker on a large cohort of pancreatic cancer patients. *PLoS ONE*. 2013;8(11):e78225.
- Lembeck AL, Posch F, Klocker EV, et al. Large platelet size is associated with poor outcome in patients with metastatic pancreatic cancer. *Clin Chem Lab Med*. 2018;57(5):740-744.
- Jafri SH, Shi R, Mills G. Advance lung cancer inflammation index (ALI) at diagnosis is a prognostic marker in patients with metastatic non-small cell lung cancer (NSCLC): a retrospective review. *BMC Cancer*. 2013;27(13):13-158.
- Tomita M, Ayabe T, Maeda R, Nakamura K. Comparison of inflammation-based prognostic scores in patients undergoing curative resection for non-small cell lung cancer. *World J Oncol*. 2018;9(3):85-90.
- Tomita M, Ayabe T, Maeda R, Nakamura K. Combination of advanced lung cancer inflammation index and C-reactive protein is a prognostic factor in patients with operable non-small cell lung cancer. *World J Oncol*. 2017;8(6):175-179.
- Ozyurek BA, Ozdemirel TS, Ozden SB, et al. Does advanced lung inflammation index (ALI) have prognostic significance in metastatic non-small cell lung cancer? *Clin Respir J*. 2018;12(6):2013-2019.
- Tomita M, Ayabe T, Nakamura K. The advanced lung cancer inflammation index is an independent prognostic factor after surgical resection in patients with non-small-cell lung cancer. *Interact Cardiovasc Thorac Surg*. 2018;26(2):288-292.
- Shiroyama T, Suzuki H, Tamiya M, et al. Pretreatment advanced lung cancer inflammation index (ALI) for predicting early progression in nivolumab-treated patients with advanced non-small cell lung cancer. *Cancer Med*. 2018;7(1):13-20.
- Zhang Y, Chen B. Prognostic value of the advanced lung cancer inflammation index in patients with lung cancer: a meta-analysis. *Dis Markers*. 2019;1(2019):2513026.

20. Kobayashi S, Karube Y, Inoue T, et al. Advanced lung cancer inflammation index predicts outcomes of patients with pathological stage IA lung adenocarcinoma following surgical resection. *Ann Thorac Cardiovasc Surg*. 2019;25(2):87-94.
21. Kim EY, Kim N, Kim YS, et al. Prognostic significance of modified advanced lung cancer inflammation index (ALI) in patients with small cell lung cancer_ comparison with original ALI. *PLoS ONE*. 2016;11(10):e0164056.
22. He X, Zhou T, Yang Y, et al. Advanced lung cancer inflammation index, a new prognostic score, predicts outcome in patients with small-cell lung cancer. *Clin Lung Cancer*. 2015;16(6):e165-e171.
23. Feng JF, Huang Y, Chen QX. A new inflammation index is useful for patients with esophageal squamous cell carcinoma. *Oncotargets Ther*. 2014;30(7):1811-1815.
24. Shibutani M, Maeda K, Nagahara H, et al. The prognostic significance of the advanced lung cancer inflammation index in patients with unresectable metastatic colorectal cancer: a retrospective study. *BMC Cancer*. 2019;19(1):241-019-5468-9.
25. Jank BJ, Kadletz L, Schnoll J, Selzer E, Perisanidis C, Heiduschka G. Prognostic value of advanced lung cancer inflammation index in head and neck squamous cell carcinoma. *Eur Arch Otorhinolaryngol*. 2019;276(5):1487-1492.
26. Park YH, Yi HG, Lee MH, Kim CS, Lim JH. Prognostic value of the pretreatment advanced lung cancer inflammation index (ALI) in diffuse large B cell lymphoma patients treated with R-CHOP chemotherapy. *Acta Haematol*. 2017;137(2):76-85.
27. Shi Y-Q, Yang J, Du P, et al. Effect of body mass index on overall survival of pancreatic cancer: a meta-analysis. *Medicine (Baltimore)*. 2016;95(14):e3305.
28. Han J, Zhou Y, Zheng Y, et al. Positive effect of higher adult body mass index on overall survival of digestive system cancers except pancreatic cancer: a systematic review and meta-analysis. *Biomed Res Int*. 2017;2017:1049602.
29. Ruiz-Tovar J, Martin-Perez E, Fernandez-Contreras ME, Reguero-Callejas ME, Gamallo-Amat C. Impact of preoperative levels of hemoglobin and albumin on the survival of pancreatic carcinoma. *Rev Esp Enferm Dig*. 2010;102(11):631-636.
30. Topkan E, Mertsoylu H, Ozdemir Y, et al. Prognostic usefulness of advanced lung cancer inflammation index in locally-advanced pancreatic carcinoma patients treated with radical chemoradiotherapy. *Cancer Manag Res*. 2019;7(11):8807-8815.
31. Bleeker SE, Moll HA, Steyerberg EW, et al. External validation is necessary in prediction research: a clinical example. *J Clin Epidemiol*. 2003;56(9):826-832.
32. Yakovenko A, Cameron M, Trevino JG. Molecular therapeutic strategies targeting pancreatic cancer induced cachexia. *World J Gastrointest Surg*. 2018;10(9):95-106.
33. Yang JJ, Hu ZG, Shi WX, Deng T, He SQ, Yuan SG. Prognostic significance of neutrophil to lymphocyte ratio in pancreatic cancer: a meta-analysis. *World J Gastroenterol*. 2015;21(9):2807-2815.
34. Siddiqui A, Heinzerling J, Livingston EH, Huerta S. Predictors of early mortality in veteran patients with pancreatic cancer. *Am J Surg*. 2007;194(3):362-366.
35. Feng L, Gu S, Wang P, et al. Pretreatment values of bilirubin and albumin are not prognostic predictors in patients with advanced pancreatic cancer. *Cancer Med*. 2018;7(12):5943-5951.

SUPPORTING INFORMATION

Additional supporting information may be found online in the Supporting Information section.

How to cite this article: Barth DA, Brenner C, Riedl JM, et al. External validation of the prognostic relevance of the advanced lung cancer inflammation index (ALI) in pancreatic cancer patients. *Cancer Med*. 2020;9:5473–5479. <https://doi.org/10.1002/cam4.3233>