


RESEARCH

Open Access



Impulsivity is longitudinally associated with healthy and unhealthy dietary patterns in individuals with overweight or obesity and metabolic syndrome within the framework of the PREDIMED-Plus trial

Carlos Gómez-Martínez^{1,2,3}, Nancy Babio^{1,2,3*}, Jordi Júlvez⁴, Stephanie K. Nishi^{1,2,3,5,6}, Fernando Fernández-Aranda^{3,7}, Miguel Ángel Martínez-González^{3,8}, Aida Cuenca-Royo^{3,9}, Rebeca Fernández^{3,10}, Susana Jiménez-Murcia^{3,7}, Rafael de la Torre^{3,9,11}, Xavier Pintó^{3,12,13}, Mirjam Bloemendaal^{14,15}, Montse Fitó^{3,9}, Dolores Corella^{3,10}, Alejandro Arias^{14,15} and Jordi Salas-Salvadó^{1,2,3*} 

Abstract

Background: Few studies have analyzed the associations between impulsivity and dietary patterns. Some of them have shown a cross-sectional inverse relationship between impulsivity and healthy diet scores, whereas others reported a positive association with unhealthy dietary assessments. We aimed to examine longitudinal associations of impulsivity trait with adherence to healthy and unhealthy dietary patterns in older participants at high risk of cardiovascular disease over 3 years of follow-up.

Methods: A 3-year prospective cohort analysis within the PREDIMED-Plus-Cognition study conducted in 4 PREDIMED-Plus study centers was performed. The PREDIMED-Plus study aimed to test the beneficial effect of a lifestyle intervention on the primary prevention of cardiovascular disease. The participants with overweight or obesity and metabolic syndrome included in the present study ($n = 462$; mean age of 65.3 years; 51.5% female) completed both the UPPS-P Impulsive Behavior Scale (range: 0–236 points) and the 143-item Food Frequency Questionnaire at baseline, 1-year and 3-years of follow-up. Ten diet scores assessing healthy and unhealthy dietary patterns were evaluated. Linear mixed models were performed adjusting by several confounders to study the longitudinal associations between impulsivity trait and adherence to dietary pattern scores over 3 years of follow-up (also assessing interactions by sex, age, and intervention group).

Results: Impulsivity were negatively associated with adherence to the Healthy Plant-Based [$\beta = -0.92$ (95%CI -1.67, -0.16)], Mediterranean [$\beta = -0.43$ (95%CI -0.79, -0.07)], Energy-Restricted Mediterranean [$\beta = -0.76$ (95%CI -1.16, -0.37)], Alternative Healthy Eating Index [$\beta = -0.88$ (95%CI -1.52, -0.23)], Portfolio [$\beta = -0.57$ (95%CI -0.91, -0.22)], and DASH [$\beta = -0.50$ (95%CI -0.79, -0.22)] diet scores over 3 years of follow-up, whereas impulsivity was positively related with

*Correspondence: nancy.babio@urv.cat; jordi.salas@urv.cat

¹ Universitat Rovira i Virgili, Departament de Bioquímica i Biotecnologia, Unitat de Nutrició Humana, Reus, Spain

Full list of author information is available at the end of the article



© The Author(s) 2022. **Open Access** This article is licensed under a Creative Commons Attribution 4.0 International License, which permits use, sharing, adaptation, distribution and reproduction in any medium or format, as long as you give appropriate credit to the original author(s) and the source, provide a link to the Creative Commons licence, and indicate if changes were made. The images or other third party material in this article are included in the article's Creative Commons licence, unless indicated otherwise in a credit line to the material. If material is not included in the article's Creative Commons licence and your intended use is not permitted by statutory regulation or exceeds the permitted use, you will need to obtain permission directly from the copyright holder. To view a copy of this licence, visit <http://creativecommons.org/licenses/by/4.0/>. The Creative Commons Public Domain Dedication waiver (<http://creativecommons.org/publicdomain/zero/1.0/>) applies to the data made available in this article, unless otherwise stated in a credit line to the data.

adherence to the unhealthy Western diet [$\beta = 1.59$ (95%CI 0.59, 2.58)] over time. An interaction by intervention group was found, with those participants in the intervention group with high impulsivity levels having lower adherence to several healthy dietary patterns.

Conclusions: Heightened impulsivity was longitudinally associated with lower adherence to healthy dietary patterns and higher adherence to the Western diet over 3 years of follow-up. Furthermore, nutritional intervention programs should consider impulsivity as a relevant factor for the intervention success.

Trial registration: Name of registry: Effect of an energy-restricted Mediterranean diet, physical activity and behavioral intervention on the primary prevention of cardiovascular disease. Trial registration number: [ISRCTN 89,898,870](#). Date of registration: 05/28/2014.

Keywords: Alternative Healthy Eating Index, DASH diet, Dietary patterns, Mediterranean diet, MIND diet, Planetary Healthy Dietary Index, Plant-based diet, Portfolio diet, Impulsivity

Introduction

Excessive food consumption and weight gain are recognized public health problems, with obesity prevalence being a global epidemic which has tripled since 1975 [1]. Psychological characteristics, such as psychological traits, are considered relevant factors in regard to food choice and dietary intake throughout the lifespan [2–4]. Impulsivity is one psychological trait that has been proposed as being an important factor conditioning eating behaviors, and therefore weight gain or weight loss, and the risk of obesity [5–8].

Personality traits are relatively stable characteristics of individuals, yet can present as a spectrum of possible behaviors given they may be affected by situational cues, specific environmental and social pressures can induce some extreme behaviors across the spectrum of psychological traits [9]. These psychological traits have been recognized as important predictors for health related-outcomes [10]. For example, the impulsivity trait has been proposed as a key factor in successful weight loss in people with extreme obesity who are candidates for bariatric surgery [11]. Impulsivity is defined as “a predisposition toward rapid unplanned reactions to internal or external stimuli without regard to the negative consequences of these reactions to the impulsive individuals or to others” [12]. Impulsivity can affect different aspects of a persons’ life and may be determined by both the genetic background and an individuals’ development [13, 14]. Impulsivity predisposes individuals to respond to their emotional urges, to lack premeditation and planning, and have sensation seeking [15].

Impulsivity has also been related to difficulties delaying immediate rewards [16–18]. In relation to dietary assessments, few cross-sectional studies have suggested that low impulsivity levels are associated with higher adherence to healthy dietary assessments [3, 5]. Specifically, lower impulsivity has also been related with greater control of food intake and body weight [3], and less emotional eating. Furthermore, in comparison to restrained

and non-restrained dieters, impulsivity has been postulated to play a role in modifying the participants’ capacity to adhere to a specific diet, which could lead to over-eating [6, 7]. Greater impulsivity has also been found to be positively associated with total energy intake, as well as an increased consumption of saturated fats, sugars, appetizers and snacks [5, 19]. Recently, a French study reported that participants with higher levels of impulsivity exhibited a reduced capacity to follow the French nutritional guidelines, assessed by an a priori healthy dietary pattern quality score [5].

To date, limited research has been conducted evaluating the association between impulsivity and dietary assessments, with only cross-sectional evidence being available [3, 5–7]. Additionally, to our knowledge, only one of these aforementioned studies involved analysis of a dietary pattern score [5]. The PREDIMED-Plus-Cognition study presents an opportunity to fill this knowledge gap enabling a longitudinal assessment of impulsivity trait and dietary patterns using repeated measures of impulsivity and diet consumption for a follow-up period of 3 years.

Therefore, the aim of our study was to evaluate longitudinal associations between impulsivity levels and adherence to different dietary pattern scores in an older senior population at high cardiovascular risk. We hypothesized that higher impulsivity trait would be associated with lower adherence to healthy dietary patterns and higher with unhealthy dietary patterns.

Methods

Study design

The present work provides an observational prospective cohort design using baseline, 1-year and 3-year follow-up data of the PREDIMED-Plus-Cognition population, a sub-study conducted within the PREDIMED-plus (in Spanish: PREvención con DIeta MEDiterránea) framework. The PREDIMED-Plus study is an ongoing 6-year multicenter, randomized, parallel-group

clinical trial conducted in Spain for the primary prevention of cardiovascular disease. Participants were recruited between September 2013 and December 2016 and randomly allocated in a 1:1 ratio to either the intervention or control group, using a centrally controlled, computer-generated random-number internet-based system with stratification by center, sex, and age (<65, 65–70, and >70 years). Couples sharing the same household were randomized as pairs, using the couple as a randomization unit. Participants in the intervention group received intensive training to adhere to an energy-reduced Mediterranean diet together with physical activity promotion and behavioral support aimed to achieve and maintain weight loss. Participants in the intervention group were followed 3 times/month (an individual motivational interview, a telephone call, and a group session). Participants in the control group received nutritional educational sessions every 6 months (an individual visit and a group session) to follow a non-caloric reduced Mediterranean diet using the same PREDIMED study approach [20]. No specific advice for increasing physical activity or weight loss was provided to the control group. All participants received free extra virgin olive oil (1 L/month) to reinforce their adherence to the Mediterranean diet. The study protocol has been comprehensively described elsewhere [21, 22], and can be found at <http://www.predimedplus.com>. The trial was registered at the International Standard Randomized Controlled Trial registry (<http://www.isrctn.com/ISRCTN89898870>).

Study population

Eligible participants were aged between 55 and 75 years old with overweight or obesity ($27 \leq \text{BMI} < 40 \text{ kg/m}^2$) meeting at least 3 criteria for metabolic syndrome [23]. From the original PREDIMED-Plus population ($n=6,874$), the present investigation refers to the PREDIMED-Plus-Cognition study subset of participants ($n=487$) randomized in the following recruitment centers: Universitat Rovira i Virgili, Universidad de Valencia, Institut Hospital del Mar d'Investigacions Mèdiques-IMIM and Bellvitge University Hospital-IDIBELL. Exclusion criteria are reported elsewhere [21]. For the present analysis, we excluded 25 participants with implausible energy intake values (≤ 800 or ≥ 4000 kcal/d for males; ≤ 500 or ≥ 3500 kcal/d for females) [24], resulting in a total population of 462 participants for the analysis. The flow-chart of the studied participants is shown in Supplemental Fig. 1 [see Additional file 1].

All participants provided written informed consent, and the ethical committees of all participating institutions approved the study protocol and procedures.

Impulsivity

Impulsivity was assessed at baseline, 1-year and 3-years of follow-up with the Impulsive Behavior Scale (UPPS-P) [15], validated for Spanish populations [25]. The UPPS-P is a 59-item self-reported questionnaire using a 4-point Likert scale (from 1 = “agree” to 4 = “disagree strongly”), which measures impulsivity traits by assessing 5 factors of impulsivity-related pathways: negative urgency, (lack of) perseverance, (lack of) premeditation, sensation seeking, and positive urgency. These 5-related impulsivity factors were obtained by combining their respective items, and the total UPPS-P score was obtained by summing all the unweighted UPPS-P items. Higher UPPS-P scores indicate higher levels of impulsivity. The α Cronbach values for the total score were 0.91 at baseline, 0.93 at 1-year of follow-up and 0.94 at 3-year of follow-up.

Although impulsivity trait is relatively stable over time, in our study it was preferred to assess impulsivity trait as a time-varying variable rather than solely at baseline in order to account for possible minimal variability, as for example impulsivity has been seen to change with increasing age and other factors [14], as well as to give more robustness to the analyses assessing impulsivity trait in more than one time-point.

Covariates

Sex, age, level of education, civil status and smoking status were obtained at baseline from self-reported questionnaires administered by trained staff in face-to-face interviews. Physical activity, BMI, alcohol intake and energy intake were obtained at baseline, 1-year and 3-years of follow-up. Physical activity was evaluated using the short validated version of the Minnesota Leisure-Time Physical Activity Questionnaire [26]. Weight and height were measured by duplicate by trained staff using calibrated scales and wall-mounted stadiometers, respectively. BMI was calculated using the mean values of total body weight and height. Dietary intake was assessed via face-to-face interviews using the validated, semi-quantitative 143-item Food-Frequency Questionnaire (FFQ) [27, 28], and total energy and alcohol intake were obtained from the FFQs [27].

Dietary pattern scores

The FFQ collected information on portion sizes and nine consumption frequencies (from “never or almost never” to “ ≥ 6 times/day”) for each assessed food item consumed over the previous year. Energy and nutrient intakes were obtained using data from the Spanish food composition database and by multiplying the frequency

by the portion size, accounting for the duration of the period considered [29].

A total of 10 dietary pattern adherence scores were calculated. Eight dietary scores (Healthy Plant-Based diet, Unhealthy Plant-Based diet, Alternative Healthy Eating Index, Portfolio diet, Dietary Approaches to Stop Hypertension [DASH], Mediterranean-DASH diet Intervention for Neurodegenerative Delay [MIND], Planetary Healthy Dietary Index, and Western diet) were determined based on data obtained from the 143-FFQ. Another score (the Energy-Restricted Mediterranean diet) was obtained from a 17-item Mediterranean diet questionnaire, which was assessed via face-to-face interviews by trained staff. The remaining diet score (the Mediterranean diet, without energy restriction specified) was obtained using data from the 143-FFQ as well as from equivalent items in the 17-point Mediterranean diet questionnaire.

Plant-based diets, characterized by higher plant food consumption than animal foods, are associated with a favorable cardiovascular disease risk [30]. In the present report, both the Healthy and Unhealthy Plant-Based dietary patterns were determined using the respective diet scores, with adherence scores ranging from 18 to 90 points [31]. Mediterranean diets have been associated with multiple health benefits, in particular cardiovascular health [32]. Adherence to an energy-restricted Mediterranean diet was evaluated by the 17-item Mediterranean diet questionnaire, with a score ranging from 0 to 17 points [33]. Adherence to the Mediterranean diet, without energy restriction, was determined based on the validated 14-item Mediterranean diet questionnaire (also called MEDAS), with the possible score ranging from 0 to 14 points [34, 35]. The 2010- Alternative Healthy Eating Index is a dietary pattern which follows the Dietary Guidelines for Americans and includes dietary factors involved in the development of chronic disease, with a possible score ranging from 0 to 110 points [36]. The Portfolio diet is a plant-based dietary pattern that combines recognized cholesterol-lowering foods, with an adherence score ranging from 6 to 30 points [37]. The DASH diet is a dietary pattern that was developed to reduce hypertension, and possible scores could range from 0 to 40 points [38]. The MIND diet is a diet tailored to protect against cognitive decline, and adherence scores could range from 0 to 15 points [39]. The Planetary Healthy Dietary score defined by the EAT-Lancet commission is an ecological dietary pattern based on sustainable food choices, with possible adherence scores ranging from 0 to 14 points [40]. A Western diet presents high consumption of red meat and fast or fried food and low food intake of fruits, vegetables and fish [41, 42], being this dietary pattern associated with different health issues [42]. Adherence of these 10 dietary scores

were evaluated in order to broadly assess possible differences between impulsivity and several dietary patterns, and for the sake of testing robustness (i.e., to determine if all healthy dietary scores or patterns tend to be negatively associated and all unhealthy dietary patterns are positively related). Supplemental Table 1 provides a description of the method performed to obtain the Western diet score, with a possible score ranging from 12 to 60 points [see Additional file 1]. For all aforementioned dietary patterns evaluated, higher scores indicate higher adherence to their respective dietary pattern.

Statistical analysis

For the current analyses, the PREDIMED-Plus-Cognition study database updated in September 2021 was used.

Baseline participant characteristics are presented as numbers and percentages for categorical variables and mean \pm standard deviation for quantitative variables. Linear mixed models were performed to assess longitudinal associations between the impulsivity trait as the exposure variable and dietary pattern scores as the outcomes, both measured as continuum time-varying variables. Associations between UPPS-P subscales and dietary patterns were also assessed using linear mixed models. Random effects were hierarchically established by center and by members sharing the same household unit ($n=418$), respectively. The random intercept was performed for each participant and the random slope was performed considering baseline, 1-year and 3-years of follow-up data. Linear mixed models handle missing data accounting for the fact that repeated measures for each participant are intracorrelated, in the present study this meant including participants and using data when information from at least one of the three time-points was available. Two models were fitted to adjust linear mixed models. Model 1 was adjusted by sex, age (years) and intervention group. Model 2 was further adjusted by education level (primary school or less; high school or college), civil status (single, divorced, separated or widower; married) and smoking status (never smoked; former or current smoker) at baseline, whereas physical activity (MET min/week), BMI (kg/m^2), alcohol intake (g/d, adding the quadratic term) and energy intake (kcal/d) were adjusted including data at each time-point.

Interaction analyses between impulsivity and sex, age and intervention group were performed by comparing the model with and without the interaction product using the likelihood ratio test. A sensitivity analysis was conducted to test the longitudinal associations between impulsivity and dietary patterns by intervention group. We also analyzed longitudinal associations between baseline UPPS-P score and 3-year adherence to healthy and unhealthy dietary patterns.

As the range of UPPS-P is large (0–236 points), all beta coefficients were multiplied by 100 hundred and robust variance estimators were used in all models to account for intracluster correlations. The data was analyzed using the Stata-14 software program (StataCorp). Statistical significance was set using the Benjamini–Hochberg false discovery rate correction procedure [43] at a Q-value < 0.05.

Results

Descriptive results

Table 1 shows baseline characteristics of the studied population (n = 462). The mean age was 65.3 ± 4.7 years and 51.5% were female. Approximately, a half of the participants had at least the primary school educational level, three quarters were married, and a half had never smoked. A total of 28.1% of the participants presented overweight (BMI < 30 kg/m²), with the rest having obesity (BMI ≥ 30 kg/m²). At baseline, the mean ± SD, minimum and maximum score for UPPS-P were 108.2 ± 22.7,

71 and 196 points, respectively. In regard to the UPPS-P scores at the 1- and 3-year follow-up the mean ± SD, minimum and maximum were 109.2 ± 24.5, 71 and 207, and 106.8 ± 24.1, 68 and 199, respectively. Baseline energy intake, food group consumption, and the 10 dietary pattern scores evaluated as mean ± SD are shown in Table 1.

For longitudinal analyses, UPPS-P measurement was conducted in 438 participants in which dietary assessments were conducted in all the study population.

Impulsivity and dietary pattern scores

Figure 1 shows the longitudinal associations between impulsivity and adherence to diet scores over the 3 years of follow-up. Higher impulsivity values were associated with less adherence to the Healthy Plant-Based diet (β = -1.46; CI 95% [-2.68, -0.23]), Mediterranean diet (β = -0.74; CI 95% [-1.11, -0.38]), Energy-Restricted Mediterranean diet (β = -1.11; CI 95% [-1.73, -0.49]), Alternative Healthy Eating Index (β = -1.48; CI 95% [-2.52,

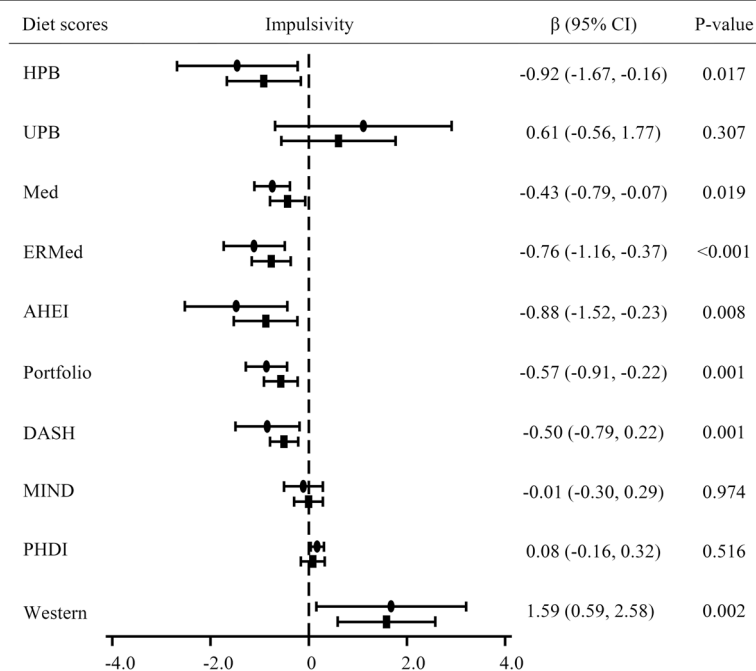


Fig. 1 Longitudinal associations between impulsivity and dietary pattern scores (n = 438). Abbreviations: HPB, Healthy Plant-Based diet; UPB, Unhealthy Plant-Based diet; Med, Mediterranean diet; ERMEd, Energy-Restricted Mediterranean diet; AHEI, Alternative Healthy Eating Index; Portfolio, Portfolio diet; DASH, Dietary Approaches to Stop Hypertension; MIND, Mediterranean-DASH Diet Intervention for Neurodegenerative Delay; PHDI, Planetary Healthy Dietary Index; Western, Western diet. Impulsivity was assessed using the UPPS-P Impulsive Behaviour Scale. Linear mixed models were used to assess associations and Beta coefficients were multiplied by 100, with robust variance estimators to account for intracluster correlations. Only model 2 beta coefficients and p-values were shown at the right of the figure. Circle dots referred model 1: associations were adjusted by sex, age (years) and intervention group at baseline. Square dots referred model 2: associations were further adjusted by education level (primary school or less; higher school or college), civil status (single, divorced, separated or widower; married) and smoking status (never smoked; former or current smoker) at baseline, whereas physical activity (MET min/week), body mass index (kg/m²), alcohol intake (g/d, adding the quadratic term), and energy intake (kcal/d) at each time-point. All significant associations remained significant after Benjamini–Hochberg correction in both model 1 and model 2

Table 1 Baseline participant characteristics ($n = 462$)

General characteristics	Values
Age (years)	65.3 ± 4.7
Sex (women)	238 (51.5)
Intervention group	228 (49.3)
Education level	
Primary school or less	251 (54.3)
High school or college	211 (45.7)
Civil status	
Single, divorced, separated or widower	98 (21.2)
Married	364 (78.8)
Smoking status	
Never smoked	231 (50.0)
Former or current smoker	231 (50.0)
Physical activity (MET min/week)	2343 ± 2004
Body Mass Index (kg/m ²)	32.5 ± 3.4
Psychological assessment (Range)	
UPPS-P Impulsive Behavior Scale (0–236 points)	108.1 ± 22.6
Energy intake and food groups consumption	
Energy intake (kcal/d)	2329 ± 475
Fruit (g/d)	340.2 ± 174.0
Vegetables (g/d)	344.2 ± 136.0
Legumes (g/d)	19.0 ± 9.82
Nuts (g/d)	13.5 ± 13.7
Extra virgin olive oil (g/d)	32.7 ± 19.9
Grains (g/d)	145.4 ± 69.0
Fish (g/d)	109.8 ± 43.1
Meat (g/d)	156.2 ± 56.3
Dairy products (g/d)	323.7 ± 179.7
Alcohol (g/d)	8.7 ± 11.3
Dietary pattern scores (Range)	
Healthy Plant-Based diet (18–90 points)	56.6 ± 7.6
Unhealthy Plant-Based diet (18–90 points)	57.3 ± 6.5
Mediterranean diet (0–14 points)	8.0 ± 1.8
Energy-restricted Mediterranean diet (0–17 points)	7.9 ± 2.5
Alternative Healthy Eating Index (0–110 points)	65.3 ± 8.6
Portfolio diet (6–30 points)	16.7 ± 4.0
DASH diet (0–40 points)	23.8 ± 5.2
MIND diet (0–15 points)	9.2 ± 1.2
Planetary Healthy Dietary Index (0–14 points)	9.2 ± 1.5
Western diet (12–60 points)	28.9 ± 5.6

Abbreviations: DASH Dietary Approaches to Stop Hypertension, MIND Mediterranean-DASH Diet Intervention for Neurodegenerative Delay
Data are expressed as n (%) for categorical variables and mean ± SD for quantitative variables

The UPPS-P was measured only in 349 participants

-0.44]), Portfolio diet ($\beta = -0.86$; CI 95% [-1.28, -0.44]), and DASH diet ($\beta = -0.84$; CI 95% [-1.50, -0.19]) scores over 3 years of follow-up, and contrary, with higher adherence to the Western diet score ($\beta = 1.68$; CI 95% [0.15, 3.21]) over time, in model 1. These associations

remained significant in the fully adjusted model. No significant associations were found in the case of the Unhealthy Plant-Based diets, MIND diet, and Planetary Healthy Dietary Index scores. Supplemental Fig. 2 shows longitudinal associations between UPPS-P subscales and adherence to dietary pattern scores over time [see Additional file 1].

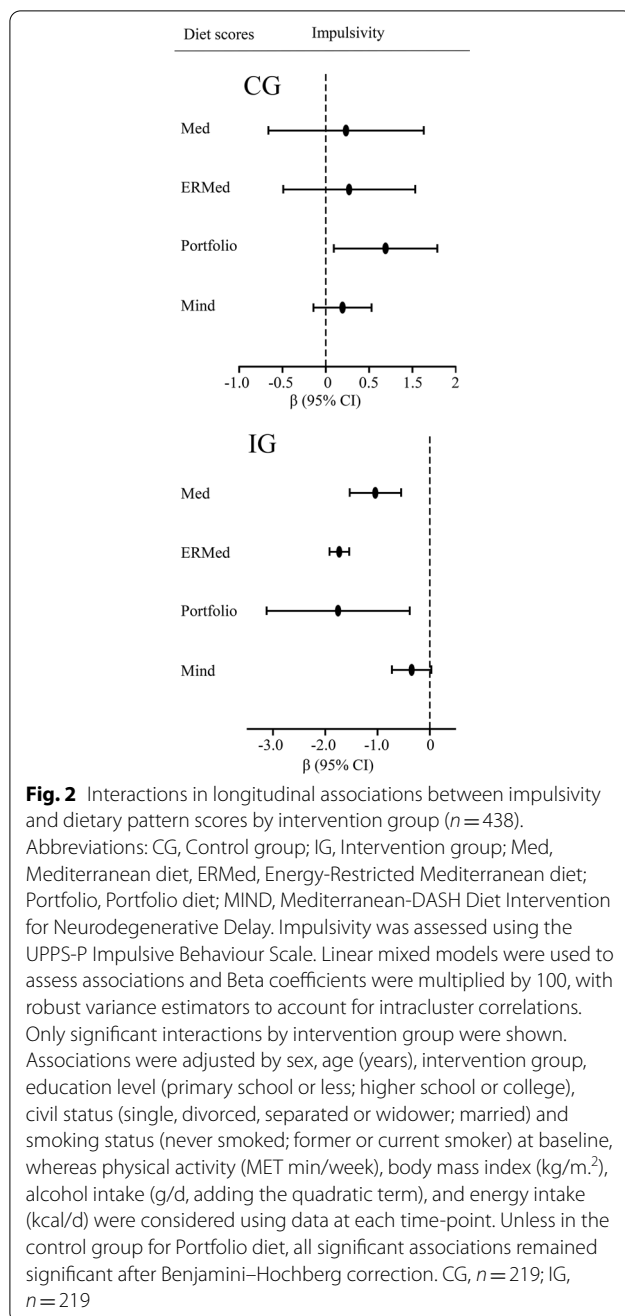
There were no significant interactions by sex and age between impulsivity and dietary pattern scores (data not shown). Significant interactions by intervention or control group were found between impulsivity and adherence to the Mediterranean diet, Energy-Restricted Mediterranean diet, Portfolio diet, and MIND diet adherence scores over time (Fig. 2).

A sensitivity analysis was performed due to several significant interactions being displayed by the PRED-IMED-Plus-Cognition trial intervention or control group between impulsivity and adherence to the assessed dietary patterns over 3 years of follow-up. This sensitivity analysis indicated a positive association between impulsivity and the Western diet score for the control group, whereas impulsivity was associated with lower adherence to the Mediterranean diet, Energy-Restricted Mediterranean diet, Alternative Healthy Eating Index, Portfolio diet, and DASH diet scores over time for the intervention group (Supplemental Table 2) [see Additional file 1]. We further analyzed longitudinal associations between baseline UPPS-P score and adherence to dietary patterns over 3 years of follow-up (data not shown), and the results followed similar trends although only the adherence to the Western diet remained statistically significant ($\beta = 2.45$; CI 95% [0.94, 3.96]).

Discussion

To the best of our knowledge, the present study is the first to investigate longitudinal associations between impulsivity and adherence to various dietary patterns over 3 years of follow-up, while also accounting for several confounders. Our main finding showed that impulsivity was negatively associated with several healthy diet scores and positively related with adherence to an unhealthy dietary pattern in a Mediterranean population with overweight or obesity and metabolic syndrome participating in a lifestyle intervention program with a Mediterranean diet.

Limited research has been conducted studying relationships between impulsivity and dietary patterns. The NutriNet-Santé cohort has assessed cross-sectional associations between impulsivity and the representative score of the French Nutrition Guideline in an adult population, finding an inverse relationship [5]. In line with this study, our work also found in an older population that higher impulsivity levels were related with



less adherence over 3 years of follow-up to most of the dietary scores assessed that have been associated with multiple health benefits [44]. Furthermore, impulsivity trait were positively associated with greater increases in the adherence to a Western diet style over time, a typical food pattern linked with an increased risk of chronic diseases [42]. However, a relationship between impulsivity trait and adherence to the MIND diet was not found. A possible explanation could be that the MIND diet is more permissive with red meat consumption, includes

cheese consumption as a component of the score, and does not consider the consumption of fruits, aside from berries, in contrast to other healthy diet scores reflecting significant negative associations. In addition, impulsivity and adherence to the Planetary Healthy Index over time did not show a relationship either. In comparison with the diet scores displaying significant inverse associations, the Planetary Healthy Index allows for low-moderate but sustainable consumption of foods often considered to be more palatable, such as starchy vegetables, dairy foods, several kinds of protein sources (e.g., red meat or eggs), saturated oils, and added sugars, similar to the MIND diet. This leniency in food quantities and consumption of often more palatable food groups may explain why a non-significant relationship was observed between impulsivity and the MIND diet and the Planetary Healthy Index, instead of a significant inverse association.

In our study, relationships between impulsivity and adherence to unhealthy dietary patterns over 3 years of follow-up showed discrepancies in their findings depending on the food group components of the diet scores assessed. Some evidence was found indicating positive cross-sectional relationships between impulsivity trait and the Western pattern style [19], but it is unknown for other non-healthy dietary patterns as those based in plant foods. In the present study, impulsivity showed a non-significant positive association with adherence to the Unhealthy Plant-Based diet over 3 years of follow-up, whereas a positive relationship was observed with the Western diet. This latter association demonstrated that participants with heightened impulsivity tend to easily follow a diet including a lower adherence to the consumption of healthy food groups (such as whole grains, fruits, vegetables, fish, nuts and legumes) and a higher adherence to the consumption of unhealthy food groups (such as refined grains, fast foods, red and processed meats, butters, sugar drinks, sweets and desserts) over time. Nevertheless, when impulsivity were assessed in relation to adherence to a food pattern representing a non-healthy plant-based diet, no association was shown. The Unhealthy Plant-Based diet considers animal food sources as a negative component, and this may be an explanation for the non-significance seen with impulsivity levels compared to adherence to the Western style diet over 3 years of follow-up.

Impulsivity is characterized by a tendency to act rashly under extreme positive or negative emotions, a lack of perseverance and premeditation, and the search for experiences and feelings [12, 15]. These attributes may predispose an individual to have greater difficulties in following a healthy dietary pattern that could be perceived as being less palatable or presents with restrictions to food groups which are socially commonly consumed. Furthermore,

impulsivity is closely related to the reward system and food addiction [16, 18], and palatable foods have been suggested to affect the reward system in the same way as other kind of addictions such as alcoholism or drug abuse [45]. In addition, situational cues could induce more extreme behaviors in the spectrum of trait impulsivity [9]. For example, the power of heavy marketing has been observed to have an effect on prime automatic eating behaviors based on food advertisements, incrementing unhealthy food choices and the urge to eat [17, 46].

Consequently, our results demonstrated that higher impulsivity levels were more likely to be associated with a greater difficulty in adhering over 3 years of follow-up to healthy dietary patterns that have been shown to be useful in the prevention of cardiovascular-related problems or cancer [30, 32, 36, 37, 39, 44]. At the same time, people with high impulsivity levels tend to easily adhere to the unhealthy Western diet over time, a food pattern largely associated with different chronic diseases and health related conditions [42]. Therefore, food choices which may be driven by this psychological trait of impulsivity may play a role in increasing or reducing the risk of nutrition-related non-communicative diseases.

Our results showed few significant associations between negative urgency, positive urgency, sensation seeking, and perseverance UPPS-P subscales with adherence to some dietary patterns over 3 years of follow-up. This fact could be explained due to impulsivity being a multidimensional construct [15], suggesting that this psychological trait, as a composite, presents stronger associations with dietary patterns than specific impulsivity-related pathways.

Additionally, when impulsivity trait was only assessed at baseline, similar trends were shown for all dietary patterns as when we take into account impulsivity trait as time-varying variable, but only a significant positive association was found between impulsivity trait and adherence to the Western diet over time. These differences could be explained by using impulsivity as time-varying variable gives more robustness to our analyses. Moreover, these results could also manifest that little variations in impulsivity trait may occur over time leading to modifications in behaviors as it relates to adherence to dietary patterns.

In individuals not following an intervention program, we hypothesize that the same results would be found, as some research has shown cross-sectional positive associations between impulsivity trait and adherence to the healthy dietary French score in a total population of 51,043 participants.

Interestingly, interactions by PREDIMED-Plus intervention group were seen between impulsivity and adherence to some of the diet scores assessed over time. In

comparison with participants in the control group, those in the intervention group showed significant negative associations between impulsivity and adherence to the Mediterranean diets and the Portfolio diet over 3 years of follow-up. Personality traits, including the psychological trait of impulsivity, might influence decisions as to whether an immediate over delayed reward is chosen. This could lead to overconsumption influenced by motivations and subsequently the selection of available highly palatable and more convenient foods instead of other more healthful options [8, 16, 47, 48]. As such, participants with higher impulsivity could present with difficulties delaying unhealthy food choices instead of waiting to choose a healthier option promoted by the active intervention program, derived by a lack of perseverance and forethought, and possibly driven by an overactivation of their reward system [16–18]. The key point is that this relationship was not observed in the control group. This may be because these participants were not required to follow the more restrictive intervention program focused on weight reduction and promotion of physical activity with behavioral support. Hence, participants in the control group did not have these added potential stressors and psychological conditions with which participants with higher impulsivity may not be able to manage additional general nutritional recommendations. Thus, higher impulsivity in the context of an active intervention program might result in less adherence to general healthy dietary recommendations.

Impulsivity has been observed to be modified in mindfulness intervention programs in individuals with drug abuse disorders [49, 50]. Therefore, mindfulness interventions could help participants to better follow dietary recommendations made by dietitians in those participants with high impulsivity due to improved emotion regulation and reduction of their impulsivity traits lack of premeditation and positive urgency.

One of the most important strengths of our study is the assessment of impulsivity and multiple dietary patterns at different time-point (3 times during a 3-year period), enabling a relatively robust longitudinal analysis. In addition, our study evaluated the associations between impulsivity and adherence to several dietary patterns over 3 years of follow-up, including healthy and unhealthy dietary patterns, but also other dietary patterns considering nutritional as well as ecological and environmental considerations. Another strength is that our analyses were adjusted for several relevant confounders. Furthermore, the impulsivity construct indicated a strong internal consistency showed by the Cronbach's alpha values in each time point assessed. And finally, this analysis was performed in a relatively large study population compared with other studies

assessing relationships between impulsivity and dietary assessments. However, different study limitations deserve to be recognized. The first and more important limitation is the observational study design, limiting the ability to establish causal relationships. Moreover, our study was conducted in an older Mediterranean population with overweight or obesity and at high risk of cardiovascular disease, and therefore the results may not be able to be extrapolated to other populations. Finally, FFQs present with some limitations of reliability, however in our study a validated FFQ was utilized, reducing the possibility of these reliability issues.

Conclusions

Results showed that higher impulsivity trait values were associated with lower adherence to healthy dietary patterns over 3 years of follow-up in a population at high cardiovascular risk following a lifestyle intervention. Moreover, no associations between impulsivity and adherence to both the unhealthy plant-based dietary pattern and the Planetary Healthy Index diet were found over time, possibly due to their less restrictive nature with regard to animal-based food consumption in its conception. Furthermore, impulsivity was positively related with greater adherence to a typical unhealthy Western style diet over time. Therefore, the impulsivity trait may be a risk factor of health diseases via participants' decision-making related to food consumption. In addition, our results suggest that impulsivity should be considered in case of lifestyle intervention programs aimed at modifying dietary patterns as impulsivity is an important behavioral trait that potentially influence the participants' capacity to adhere to the intervention.

Abbreviations

95%CI: 95% Confidence interval; AHEI: Alternative Healthy Eating Index; BMI: Body Mass Index; DASH: Dietary Approaches to Stop Hypertension; ERMED: Energy-Restricted Mediterranean diet; MIND: Mediterranean-DASH Diet Intervention for Neurodegenerative Delay; Med: Mediterranean diet; PHDI: Planetary Healthy Dietary Index; Portfolio: Portfolio diet; UPB: Unhealthy Plant-Based diet; UPPS-P: Urgency, Premeditation (lack of), Perseverance (lack of), Sensation Seeking, Positive Urgency, Impulsive Behavior Scale; Western: Western diet.

Supplementary Information

The online version contains supplementary material available at <https://doi.org/10.1186/s12966-022-01335-8>.

Additional file 1: Supplemental Table 1. Western diet score. **Supplemental Table 2.** Longitudinal associations between impulsivity and dietary pattern scores by intervention group ($n=438$).

Additional file 2.

Additional file 3.

Acknowledgements

The authors wish to thank the PREDIMED-Plus participants and all staff members for their engagement, as well as to the primary care centers taking part in the study. We also thank the CIBEROBN, CIBERESP and CIBERDEM initiatives of Instituto de Salud Carlos III in Spain, and the CERCA Program of the Generalitat de Catalunya.

Authors' contributions

The principal PREDIMED-Plus-Cognition investigators RT, FF-A, DC, MF, JS-S contributed to study concept and design and to data extraction from the participants, as well as NB and JJ. CG-M, CG-M, SKN performed the statistical analyses, and the interpretation of the results. CG-M, NB, JJ, SKN drafted the manuscript. All authors reviewed the manuscript for important intellectual content and approved the final version to be published.

Funding

This work was supported by the official Spanish Institutions for funding scientific biomedical research, CIBER Fisiopatología de la Obesidad y Nutrición (CIBEROBN) and Instituto de Salud Carlos III (ISCIII), through the Fondo de Investigación para la Salud (FIS), which is co-funded by the European Regional Development Fund (six coordinated FIS projects led by JS-S, including the following projects: PI13/00673, PI13/00492, PI13/00272, PI13/01123, PI13/00462, PI13/00233, PI13/02184, PI13/00728, PI13/01090, PI13/01056, PI14/01722, PI14/00636, PI14/00618, PI14/00696, PI14/01206, PI14/01919, PI14/00853, PI14/01374, PI14/00972, PI14/00728, PI14/01471, PI16/00473, PI16/00662, PI16/01873, PI16/01094, PI16/00501, PI16/00533, PI16/00381, PI16/00366, PI16/01522, PI16/01120, PI17/00764, PI17/01183, PI17/00855, PI17/01347, PI17/00525, PI17/01827, PI17/00532, PI17/00215, PI17/01441, PI17/00508, PI17/01732, PI17/00926, PI19/00957, PI19/00386, PI19/00309, PI19/01032, PI19/00576, PI19/00017, PI19/01226, PI19/00781, PI19/01560, PI19/01332, PI20/01802, PI20/00138, PI20/01532, PI20/00456, PI20/00339, PI20/00557, PI20/00886, PI20/01158); the Especial Action Project entitled: Implementación y evaluación de una intervención intensiva sobre la actividad física Cohorte PREDIMED-Plus grant to JS-S; the Recercaixa (number 2013ACUP00194) grant to JS-S; grants from the Consejería de Salud de la Junta de Andalucía (PI0458/2013, PS0358/2016, PI0137/2018); the PROMETEO/2017/017 and PROMETEO 21/2021 grants from the Generalitat Valenciana, and the grant PID2019-108858RB-I00 funded by AEI 10.13039/501100011033 and by "ERDF A way of making Europe" to DC; the SEMERGEN grant; None of the funding sources took part in the design, collection, analysis, interpretation of the data, or writing the report, or in the decision to submit the manuscript for publication. We thank CERCA Programme/Generalitat de Catalunya for institutional support and partial support was also provided by SLT006/17/00246, funded by the Department of Health of the Generalitat de Catalunya by the calls "Acció instrumental de programes de recerca orientats en l'àmbit de la recerca i la innovació en salut" and "Pla estratègic de recerca i innovació en salut (PERIS)". This research was also partially funded by EU-H2020 Grants (Eat2beNICE/ H2020-SFS-2016-2, Ref 728018; and PRIME/ H2020-SC1-BHC-2018-2020, Ref: 847879). CG-M receives a predoctoral grant from the University of Rovira i Virgili (2020PMF-PIPF-37); JS-S, senior author of this paper, is partially supported by ICREA under the ICREA Academia program. SKN is supported by a postdoctoral fellowship from the Canadian Institutes of Health Research (CIHR, MFE-171207). JJ holds the Miguel Servet-II contract (CPII19/00015) awarded by the Instituto de Salud Carlos III (co-funded by the European Social Fund "Investing in your future").

Availability of data and materials

There are restrictions on the availability of data for the PREDIMED-Plus trial, due to the signed consent agreements around data sharing, which only allow access to external researchers for studies following the project purposes. Requestors wishing to access the PREDIMED-Plus trial data used in this study can make a request to the PREDIMED-Plus trial Steering Committee chair: predimed_plus_committee@googlegroups.com. The request will then be passed to members of the PREDIMED-Plus Steering Committee for deliberation.

Declarations

Ethics approval and consent to participate

All participants provided written informed consent. According to the ethical standards of the Declaration of Helsinki by the Research Ethics Committees,

all the participating institutions approved the study protocol and procedures (PR240/13; PI13/120; 2011–005398-22; 13–07-25/7proj2). All participants signed an informed consent and this manuscript did not publish personal data of participants.

Consent for publication

NA

Competing interests

JS-S reported receiving research support from the Instituto de Salud Carlos III, Ministerio de Educación y Ciencia, Departament de Salut Pública de la Generalitat de Catalunya, the European Commission, the USA National Institutes of Health; receiving consulting fees or travel expenses from Instituto Danone, and Mundipharma, receiving nonfinancial support from Hojiblanca, Patrimonio Comunal Olivarero, the Almond Board of California, Pistachio Growers and Borges S.A; serving on the board of and receiving grant support through his institution from the International Nut and Dried Foundation and the Eroski Foundation; and personal fees from Instituto Danone Spain; Serving in the Scientific Board of Danone Institute International (non-paid member). SKN is a volunteer member of the not-for profit group Plant Based Canada. DC reported receiving grants from Instituto de Salud Carlos III. FF-A received consultancy honoraria from Novo Nordisk and editorial honoraria as EIC from Wiley. All other authors declare no commercial or financial relationships that could be construed as a potential conflict of interest. None of the sponsors had a role in any aspect of the present study, including design and conduct of the study; collection, management, analysis, and interpretation of the data; preparation, review, approval of the manuscript, and decision to submit the manuscript for publication.

Author details

¹Universitat Rovira i Virgili, Departament de Bioquímica i Biotecnologia, Unitat de Nutrició Humana, Reus, Spain. ²Institut d'Investigació Sanitària Pere Virgili (IISPV), Hospital Universitari Sant Joan de Reus, Reus, Spain. ³Centro de Investigación Biomédica en Red de Fisiopatología de la Obesidad y Nutrición (CIBEROBN), Instituto de Salud Carlos III (ISCIII), Madrid, Spain. ⁴Institut d'Investigació Sanitària Pere Virgili (IISPV), Clinical and Epidemiological Neuroscience Group (NeuroÈpia), Reus, Spain. ⁵Toronto 3D (Diet, Digestive Tract and Disease) Knowledge Synthesis and Clinical Trials Unit, Toronto, ON, Canada. ⁶Clinical Nutrition and Risk Factor Modification Centre, St. Michael's Hospital, Unity Health Toronto, Toronto, ON, Canada. ⁷Department of Psychiatry, School of Medicine and Health Sciences, University Hospital Bellvitge-IDIBELL and Department of Clinical Sciences, University of Barcelona, Barcelona, Spain. ⁸Department of Preventive Medicine and Public Health. IdISNA, University of Navarra, Pamplona, Spain. ⁹Integrative Pharmacology and Systems Neurosciences Research Group, Neurosciences Research Program, Hospital del Mar Medical Research Institute (IMIM), Barcelona, Spain. ¹⁰Department of Preventive Medicine, University of Valencia, Valencia, Spain. ¹¹Faculty of Experimental and Health Sciences, Universitat Pompeu Fabra (UPF), Barcelona, Spain. ¹²Lipids and Vascular Risk Unit, Internal Medicine, Hospital Universitari de Bellvitge-IBIDELL, Hospitalet de Llobregat, Barcelona, Spain. ¹³Universitat de Barcelona, Barcelona, Spain. ¹⁴Department of Human Genetics, Donders Institute for Brain, Cognition and Behaviour, Radboud University Medical Center, Nijmegen, The Netherlands. ¹⁵Department of Psychiatry, Donders Institute for Brain, Cognition and Behaviour, Radboud University Medical Center, Nijmegen, The Netherlands.

Received: 27 January 2022 Accepted: 10 July 2022

Published online: 08 August 2022

References

- World Health Organization. A report about overweight and obesity. Geneva: World Health Organization; 2021. <https://www.who.int/news-room/fact-sheets/detail/obesity-and-overweight>. Accessed 18 Jan 2021.
- Gacek M, Kosiba G, Wojtowicz A. Personality determinants of diet quality among polish and spanish physical education students. *Int J Environ Res Public Health*. 2021;18:466.
- van den Bree MBM, Przybeck TR, Robert CC. Diet and personality: associations in a population-based sample. *Appetite*. 2006;46:177–88.
- Möttus R, McNeill G, Jia X, Craig LCA, Starr JM, Deary IJ. The associations between personality, diet and body mass index in older people. *Health Psychol*. 2013;32:353–60.
- Bénard M, Bellisle F, Kesse-Guyot E, Julia C, Andreeva VA, Etile F, Reach G, Dechelotte P, Tavolacci M-P, Hercberg S, et al. Impulsivity is associated with food intake, snacking, and eating disorders in a general population. *Am J Clin Nutr*. 2019;109:117–26.
- Leitch MA, Morgan MJ, Yeomans MR. Different subtypes of impulsivity differentiate uncontrolled eating and dietary restraint. *Appetite*. 2013;69:54–63.
- Guerrieri R, Nederkoorn C, Schrooten M, Martijn C, Jansen A. Inducing impulsivity leads high and low restrained eaters into overeating, whereas current dieters stick to their diet. *Appetite*. 2009;53:93–100.
- Mallorquí-Bagué N, Lozano-Madrid M, Vitró-Alcaraz C, Forcano L, Díaz-López A, Galera A, Fernández-Carrión R, Granero R, Jiménez-Murcia S, Corella D, et al. Effects of a psychosocial intervention at one-year follow-up in a PREDIMED-plus sample with obesity and metabolic syndrome. *Sci Rep*. 2021;11:9144.
- Svrakic DM, Przybeck TR, Cloninger CR. Mood states and personality traits. *J Affect Disord*. 1992;24:217–26.
- Harper RG. Personality-guided therapy in behavioral medicine. 1 ed. Washington DC: American Psychological Association; 2004.
- Sarwer DB, Allison KC, Wadden TA, Ashare R, Spitzer JC, McCuen-Wurst C, LaGrotte C, Williams NN, Edwards M, Tewksbury C, et al. Psychopathology, disordered eating, and impulsivity as predictors of outcomes of bariatric surgery. *Surg Obes Relat Dis*. 2019;5:650–5.
- Moeller FG, Barratt ES, Dougherty DM, Schmitz JM, Swann AC. Psychiatric aspects of impulsivity. *Am J Psychiatry*. 2001;158:1783–93.
- Hollander E, Rosen J. Impulsivity. *J Psychopharmacol*. 2000;14:S39–44.
- Liu M, Argyriou E, Cyders MA. Developmental considerations for assessment and treatment of impulsivity in older adults. *Curr Top Behav Neurosci*. 2020;47:165–77.
- Lynam DR, Smith GT, Whiteside SP, Cyders MA. The UPPS–P: Assessing five personality pathways to impulsive behavior (Technical Report). West Lafayette: Purdue University; 2006.
- Maxwell AL, Gardiner E, Loxton NJ. Investigating the relationship between reward sensitivity, impulsivity, and food addiction: a systematic review. *Eur Eat Disord Rev*. 2020;28:368–84.
- Kidd C, Loxton NJ. Junk food advertising moderates the indirect effect of reward sensitivity and food consumption via the urge to eat. *Physiol Behav*. 2018;188:276–82.
- Loxton NJ. The role of reward sensitivity and impulsivity in overeating and food addiction. *Curr Addict Reports*. 2018;5(2):212–22.
- Lumley J, Stevenson RJ, Oaten MJ, Mahmut M, Yeomans MR. Individual differences in impulsivity and their relationship to a Western-style diet. *Pers Individ Dif*. 2016;97:178–85.
- Estruch R, Ros E, Salas-Salvadó J, Covas M-I, Corella D, Arós F, Gómez-Gracia E, Ruiz-Gutiérrez V, Fiol M, Lapetra J, et al. Primary prevention of cardiovascular disease with a mediterranean diet supplemented with extra-virgin olive oil or nuts. *N Engl J Med*. 2018;378:e34.
- Martínez-González MA, Buil-Cosiales P, Corella D, Bulló M, Fitó M, Vioque J, Romaguera D, Martínez JA, Wärnberg J, López-Miranda J, et al. Cohort profile: design and methods of the PREDIMED-plus randomized trial. *Int J Epidemiol*. 2019;48:387–388.
- Salas-Salvadó J, Díaz-López A, Ruiz-Canela M, Basora J, Fitó M, Corella D, Serra-Majem L, Wärnberg J, Romaguera D, Estruch R, et al. Effect of a Lifestyle Intervention Program With Energy-Restricted Mediterranean Diet and Exercise on Weight Loss and Cardiovascular Risk Factors: One-Year Results of the PREDIMED-Plus Trial. *Diabetes Care*. 2018;42:dc180836.
- Alberti KG, Eckel RH, Grundy SM, Zimmet PZ, Cleeman JI, Donato KA, Fruchart J-C, James WPT, Loria CM, Smith SC. Harmonizing the Metabolic Syndrome. *Circulation*. 2009;120:1640–5.
- Willett W. *Nutritional Epidemiology*. 3rd ed. New York: Oxford University Press; 2012.
- Verdejo-García A, Lozano Ó, Moya M, Alcázar MÁ, Pérez-García M. Psychometric properties of a Spanish version of the UPPS–P impulsive behavior scale: reliability, validity and association with trait and cognitive impulsivity. *J Pers Assess*. 2010;92:70–7.
- Molina L, Sarmiento M, Peñafiel J, Donaire D, García-Aymerich J, Gomez M, Ble M, Ruiz S, Frances A, Schröder H, et al. Validation of the regior

- short physical activity questionnaire for the adult population. *PLoS One*. 2017;12:e0168148.
27. Martín-Moreno JM, Boyle P, Gorgojo L, Maisonneuve P, Fernández-Rodríguez JC, Salvini S, Willett WC. Development and validation of a food frequency questionnaire in Spain. *Int J Epidemiol*. 1993;22:512–9.
 28. Fernández-Ballart JD, Piñol JL, Zazpe I, Corella D, Carrasco P, Toledo E, Pérez-Bauer M, Martínez-González MÁ, Salas-Salvadó J, Martín-Moreno JM. Relative validity of a semi-quantitative food-frequency questionnaire in an elderly Mediterranean population of Spain. *Br J Nutr*. 2010;103:1808–16.
 29. Moreiras O, Carbajal Á, Cabrera L, Cuadrado C. Tablas de composición de alimentos: Guía de prácticas. 19 ed. Madrid: Pirámide; 2018.
 30. Gan ZH, Cheong HC, Tu Y-K, Kuo P-H. Association between plant-based dietary patterns and risk of cardiovascular disease: a systematic review and meta-analysis of prospective cohort studies. *Nutrients*. 2021;13:3952.
 31. Satija A, Bhupathiraju SN, Rimm EB, Spiegelman D, Chiuve SE, Borgi L, Willett WC, Manson JE, Sun Q, Hu FB. Plant-based dietary patterns and incidence of Type 2 diabetes in US men and women: results from three prospective cohort studies. *PLOS Med*. 2016;13:e1002039.
 32. Becerra-Tomás N, Blanco Mejía S, Vigiouliou E, Khan T, Kendall CWC, Kahleova H, Rahelić D, Sievenpiper JL, Salas-Salvadó J. Mediterranean diet, cardiovascular disease and mortality in diabetes: a systematic review and meta-analysis of prospective cohort studies and randomized clinical trials. *Crit Rev Food Sci Nutr*. 2020;60:1207–27.
 33. Schröder H, Zomeño MD, Martínez-González MA, Salas-Salvadó J, Corella D, Vioque J, Romaguera D, Martínez JA, Tinahones FJ, Miranda JL, et al. Validity of the energy-restricted mediterranean diet adherence screener. *Clin Nutr*. 2021;40:4971–9.
 34. García-Conesa M-T, Philippou E, Pafilas C, Massaro M, Quarta S, Andrade V, Jorge R, Chervenkov M, Ivanova T, Dimitrova D, et al. Exploring the validity of the 14-Item Mediterranean Diet Adherence Screener (MEDAS): a cross-national study in seven European countries around the mediterranean region. *Nutrients*. 2020;12:2960.
 35. Schröder H, Fitó M, Estruch R, Martínez-González MA, Corella D, Salas-Salvadó J, Lamuela-Raventós R, Ros E, Salaverría I, Fiol M, et al. A short screener is valid for assessing mediterranean diet adherence among older Spanish men and women. *J Nutr*. 2011;141:1140–5.
 36. Chiuve SE, Fung TT, Rimm EB, Hu FB, McCullough ML, Wang M, Stampfer MJ, Willett WC. Alternative dietary indices both strongly predict risk of chronic disease. *J Nutr*. 2012;142:1009–18.
 37. Chiavaroli L, Nishi SK, Khan TA, Braunstein CR, Glenn AJ, Mejia SB, Rahelić D, Kahleová H, Salas-Salvadó J, Jenkins DJA, et al. Portfolio dietary pattern and cardiovascular disease: a systematic review and meta-analysis of controlled trials. *Prog Cardiovasc Dis*. 2018;61:43–53.
 38. Fung TT. Adherence to a DASH-style diet and risk of coronary heart disease and stroke in women. *Arch Intern Med*. 2008;168:713.
 39. Morris MC, Tangney CC, Wang Y, Sacks FM, Barnes LL, Bennett DA, Aggarwal NT. MIND diet slows cognitive decline with aging. *Alzheimer's Dement*. 2015;11:1015–22.
 40. Cacau LT, De Carli E, de Carvalho AM, Lotufo PA, Moreno LA, Bensenor IM, Marchioni DM. Development and validation of an index based on EAT-lancet recommendations: the planetary health diet index. *Nutrients*. 2021;13:1698.
 41. Cordain L, Eaton SB, Sebastian A, Mann N, Lindeberg S, Watkins BA, O'Keefe JH, Brand-Miller J. Origins and evolution of the Western diet: health implications for the 21st century. *Am J Clin Nutr*. 2005;81:341–54.
 42. Uribarri J, Woodruff S, Goodman S, Cai W, Chen X, Pyzik R, Yong A, Striker GE, Vlassara H. Advanced glycation end products in foods and a practical guide to their reduction in the diet. *J Am Diet Assoc*. 2010;110:911–6.
 43. Benjamini Y, Hochberg Y. Controlling the false discovery rate: a practical and powerful approach to multiple testing. *J R Stat Soc Ser B*. 1995;57:289–300.
 44. Cena H, Calder PC. Defining a healthy diet: evidence for the role of contemporary dietary patterns in health and disease. *Nutrients*. 2020;12:334.
 45. Fletcher PC, Kenny PJ. Food addiction: a valid concept? *Neuropsychopharmacol*. 2018;43:2506–13.
 46. Harris JL, Bargh JA, Brownell KD. Priming effects of television food advertising on eating behavior. *Health Psychol*. 2009;28:404–13.
 47. Keller C, Siegrist M. Successful and unsuccessful restrained eating. does dispositional self-control matter? *Appetite*. 2014;74:101–6.
 48. Sarmugam R, Worsley A. Dietary behaviours, impulsivity and food involvement: identification of three consumer segments. *Nutrients*. 2015;7:8036–57.
 49. Gallo GG, Curado DF, Opaleye ES, Donate APG, Scattone VV, Noto AR. Impulsivity and mindfulness among inpatients with alcohol use disorder. *Subst Use Misuse*. 2021;56:25–32.
 50. Tang Y-Y, Tang R, Posner MI. Mindfulness meditation improves emotion regulation and reduces drug abuse. *Drug Alcohol Depend*. 2016;163:513–8.

Publisher's Note

Springer Nature remains neutral with regard to jurisdictional claims in published maps and institutional affiliations.

Ready to submit your research? Choose BMC and benefit from:

- fast, convenient online submission
- thorough peer review by experienced researchers in your field
- rapid publication on acceptance
- support for research data, including large and complex data types
- gold Open Access which fosters wider collaboration and increased citations
- maximum visibility for your research: over 100M website views per year

At BMC, research is always in progress.

Learn more biomedcentral.com/submissions

