

Automated oxygen titration and weaning with FreeO₂ in patients with acute exacerbation of COPD: a pilot randomized trial

François Lellouche¹
Pierre-Alexandre Bouchard¹
Maude Roberge¹
Serge Simard^{1,2}
Erwan L'Her^{1,3}
François Maltais¹
Yves Lacasse¹

¹Research Centre, ²BioStatistics Department, Quebec Heart and Lung Institute, Laval University, ³Emergency Medicine, Hôtel-Dieu de Lévis, Laval University, Quebec City, QC, Canada



Correspondence: François Lellouche
Centre de Recherche, Institut
Universitaire de Cardiologie et de
Pneumologie de Québec, 2725
Chemin Ste-Foy, Quebec City G1V
4G5, QC, Canada
Tel +1 418 656 8711 ext 3298
Email francois.lellouche@cricuq.ulaval.ca

Introduction: We developed a device (FreeO₂) that automatically adjusts the oxygen flow rates based on patients' needs, in order to limit hyperoxia and hypoxemia and to automatically wean them from oxygen.

Objective: The aim of this study was to evaluate the feasibility of using FreeO₂ in patients hospitalized in the respiratory ward for an acute exacerbation of COPD.

Methods: We conducted a randomized controlled trial comparing FreeO₂ vs manual oxygen titration in the respiratory ward of a university hospital. We measured the perception of appropriateness of oxygen titration and monitoring in both groups by nurses and attending physicians using a Likert scale. We evaluated the time in the target range of oxygen saturation (SpO₂) as defined for each patient by the attending physician, the time with severe desaturation (SpO₂ <85%), and the time with hyperoxia (SpO₂ >5% above the target). We also recorded length of stay, intensive care unit admissions, and readmission rate. Fifty patients were randomized (25 patients in both groups; mean age: 72±8 years; mean forced expiratory volume in 1 second: 1.00±0.49 L; and mean initial O₂ flow 2.0±1.0 L/min).

Results: Nurses and attending physicians felt that oxygen titration and monitoring were equally appropriate with both O₂ administration systems. The percentage of time within the SpO₂ target was significantly higher with FreeO₂, and the time with severe desaturation and hyperoxia was significantly reduced with FreeO₂. Time from study inclusion to hospital discharge was 5.8±4.4 days with FreeO₂ and 8.4±6.0 days with usual oxygen administration (*P*=0.051).

Conclusion: FreeO₂ was deemed as an appropriate oxygen administration system by nurses and physicians of a respiratory unit. This system maintained SpO₂ at the target level better than did manual titration and reduced periods of desaturation and hyperoxia. Our results also suggest that FreeO₂ has the potential to reduce the hospital length of stay.

Keywords: oxygen inhalation therapy, technological innovations, hypoxia, hyperoxia, closed-loop

Introduction

Patients with COPD who are hospitalized for an acute exacerbation often receive oxygen therapy as a part of their treatment. Despite current recommendations,¹ oxygen therapy is often suboptimally adjusted during acute exacerbation of COPD, with episodes of both hypoxemia and hyperoxia reported.² Hyperoxia may be particularly problematic in COPD because of its association with hypercapnia,³⁻⁷ especially in the acute phase of exacerbations,^{3,4,8} where it may be associated with adverse clinical outcomes, including respiratory acidosis and even increased mortality.^{4,8,9} Continuous adjustment of oxygen flows is time consuming, and clinicians are more concerned with oxygen desaturation

than with hyperoxia, potentially leading to the utilization of higher than required oxygen flows for longer than necessary.

Closed-loop adjustment of oxygen administration based on pulsed oxygen saturation (SpO_2) may optimize oxygen therapy and improve patients' safety.¹⁰ We recently developed a closed-loop device, FreeO₂, that automatically adjusts the oxygen flows administered to spontaneously breathing patients to maintain SpO_2 in a predefined target set by physicians and to progressively and automatically wean patients from oxygen.¹¹ This pilot trial was intended to test the acceptability of FreeO₂ by nurses and attending physicians and the potential clinical impact of using such a device in patients hospitalized in the respiratory ward for acute exacerbation of COPD. Our hypotheses were that 1) nurses and physicians would conclude that FreeO₂ is an acceptable oxygen administration device, 2) time spent in the target SpO_2 zone would be increased by automatic O₂ flow adjustments in comparison to manual O₂ titration, and 3) weaning time from oxygen would be shortened by the automatic O₂ adjustment device (FreeO₂).

Methods

Participants

We conducted a randomized trial (Clinical Trial Registration: NCT01393015) comparing manual oxygen titration and automated oxygen adjustment with FreeO₂ in patients hospitalized for an acute exacerbation of COPD in whom oxygen therapy was prescribed by the attending physician based on the documentation of resting hypoxemia ($\text{SpO}_2 < 90\%$). We included patients aged ≥ 40 years with a past or current smoking history of at least 10 pack-years. Patients had to maintain an SpO_2 of $\geq 92\%$ with supplemental oxygen at a maximum flow rate of 8 L/min. We excluded patients admitted for > 24 hours, patients infected with multidrug-resistant bacteria, patients on intermittent noninvasive ventilation (including CPAP for obstructive sleep apnea), and patients with cognitive impairment precluding informed consent or collaboration. The study was conducted at the Institut Universitaire de Cardiologie et de Pneumologie de Québec. The study was approved by the Institutional Ethics Committee (# 20694), and a signed consent was obtained from each participant.

FreeO₂ system

The FreeO₂ system automatically adjusts oxygen flow rates administered via nasal cannula or nonocclusive mask, using a closed-loop algorithm based on physiological data.¹¹ It also provides continuous monitoring of respiratory parameters in spontaneously breathing patients.¹¹ The main parameter that is monitored within this closed-loop system is SpO_2 that continuously feeds the algorithm at a rate of 1 value/s.

A proportional integral controller adjusts the oxygen flow delivered by a mass-flow controller from 0 L/min to 20 L/min (flow accuracy ± 0.1 L/min), with the aim of maintaining SpO_2 at a predefined target. The system was developed by the authors (FL and ELH) in collaboration with the Department of Electronic and Informatics Engineering, Laval University, Quebec (Figure 1).

Protocol

Randomization was conducted with sealed envelopes after inclusion of the patients in the study. Randomization sequences were externally generated using www.random.org. Patients were allocated to either 1) automated oxygen titration by FreeO₂ with continuous monitoring of physiological parameters, including SpO_2 and oxygen flow rates (FreeO₂ arm), at bedside and remotely at the nursing station or 2) manual oxygen administration with bedside titration from usual oxygen flow-meter (rotameter) and usual oxygen monitoring with bedside pulsed oximetry (control arm). In the control group, the nurses manually adjusted the oxygen flows guided by local protocols and by SpO_2 target provided by the attending physician before randomization. SpO_2 monitoring was conducted as per the local practice (ie, approximately three times per day). However, there were no specific training to the oxygen management guidelines and no recording of the compliance to these guidelines. In the FreeO₂ arm, oxygen was titrated automatically every second to maintain SpO_2 in the target zone set by the attending physician before randomization.

The principal investigators of the study did not manage the patients included in the study and were not involved in the treatment and discharge decisions.

Measurements

At baseline, demographic data, arterial or capillary blood gases, oxygen flow rate, and respiratory rate were recorded. Pulmonary function tests (forced expiratory volume in 1 second and forced vital capacity) were conducted using standardized postbronchodilator spirometry. These pulmonary parameters were recorded during a stable period of COPD within 1 year before or after exacerbation and during hospitalization.

In order to evaluate whether FreeO₂ could be used in daily practice and to quantify its acceptance and ease of use by caregivers (primary outcomes), the nurses and physicians' perception of the appropriateness of the oxygen management was monitored by direct interview when available on a daily basis using a 10-point Likert scale (from 0: not appropriate at all to 10: perfectly appropriate). The secondary outcomes were 1) time spent within the SpO_2 target ($\pm 2\%$), 2) time with severe desaturation ($\text{SpO}_2 < 85\%$), 3) time with hyperoxia



Figure 1 Main features of the FreeO₂: oxygen automated titration and weaning with SpO₂-O₂ flow closed-loop and monitoring.

Notes: The FreeO₂ adjusts the oxygen flow rate from 0 L/min to 20 L/min (flow accuracy ± 0.1 L/min) every second, based on the patient's needs. A proportional integral controller adjusts the oxygen flow based on the difference between the SpO₂ target set by clinicians and the continuously measured SpO₂. Several cardiorespiratory parameters are continuously recorded (O₂ flow rate, SpO₂, respiratory rate, and heart rate), and trends for these parameters are available for clinicians. Both heart rate and respiratory rate are derived from the pulse oximeter plethysmographic wave form. The version used in the study was a previous version of the device with similar technical features.

(SpO₂ >5% above the target), 4) total duration of oxygen therapy, and 5) hospital length of stay.

Patients in both groups had continuous monitoring of SpO₂, respiratory rate, heart rate, and end-tidal CO₂ with the FreeO₂ system set in the “FreeO₂ mode” (automated closed-loop adjustment of oxygen and continuous recording) or in the “recording mode” (continuous recording of physiological data without administration of oxygen by the device for those in the control group). Capillary blood gases were collected every day during the first week or up to discharge.

Statistical analyses

We could not calculate a priori a sample size based on the primary outcome as we did not have any data to estimate how the system would be accepted by the caregivers. Nevertheless, we chose to include 50 patients to obtain sufficient exposure and experience with FreeO₂. Data were expressed using mean with standard deviation or median with interquartile ranges for continuous variables or proportions for categorical data, respectively. Categorical variables were compared between groups using the chi-square or Fisher's exact tests, and

continuous variables were compared using one-way analyses of variance. Wilcoxon rank sum tests (nonparametric tests) were performed for data that did not fulfill the normality or variance assumptions after transformation. When different conclusions between analyses from one-way analysis of variance and nonparametric tests occurred, the latest approach was retained. The results were considered significant with P -values ≤ 0.05 . All analyses were conducted using the statistical package SAS, Version 9.4 (SAS Institute Inc., Cary, NC, USA).

Results

We randomized 25 patients with COPD in each group (total of 50 patients) from August 2011 to February 2015. The flow chart of patient participation in the study is shown in Figure 2. Patients' baseline characteristics are shown in Table 1. Overall, baseline characteristics were similar between the two study groups. The mean age was 72 ± 9 years, and the mean forced expiratory volume in 1 second was 1.00 ± 0.49 L, representing $37\% \pm 22\%$ predicted. Twenty-three patients (46%) were women.

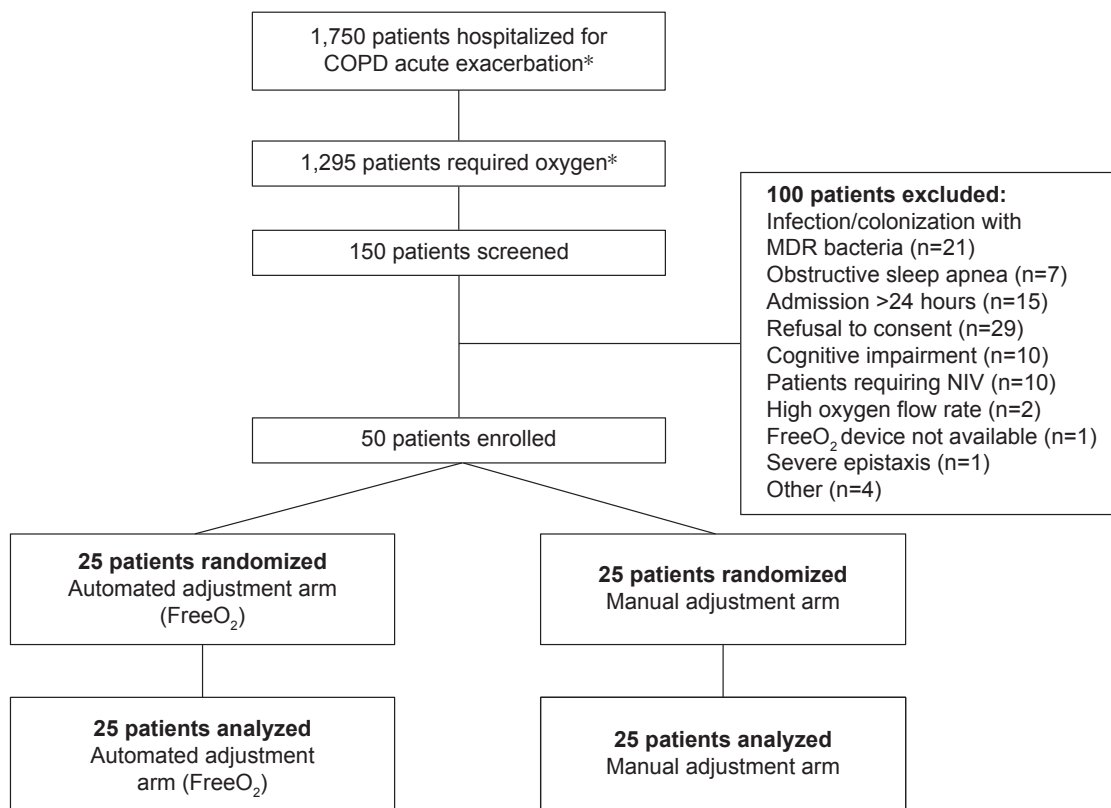


Figure 2 Flow chart of the study.

Note: *Based on administrative records of the institution.

Abbreviations: MDR, multidrug resistant; NIV, noninvasive ventilation.

Table 1 Patient characteristics

Characteristics	FreeO ₂ patients (n=25)	Control patients (n=25)
Age (years)	71±8	73±8
Men, n (%)	15 (60)	12 (48)
ED admission to inclusion (days)	0.6±0.7	0.6±1.1
Spirometry during stable state ^a		
FEV ₁ (L)	1.1±0.3	1.1±0.4
FEV ₁ (% predicted)	40±11	51±20
FEV ₁ /FVC (%)	41±0.11	47±20
Spirometry during hospital stay ^b		
FEV ₁ (L)	1.0±0.5	1.0±0.5
FEV ₁ (% predicted)	36±19	38±24
FEV ₁ /FVC (%)	45±12	49±13
Physiologic data at study inclusion		
O ₂ flow (L/min)	2.0±1.0	2.0±1.0
pH	7.40±0.05	7.39±0.05
PaCO ₂ (mmHg)	46±12	46±11
HCO ₃ ⁻ (mmol/L)	28±5	27±5
SpO ₂ (%)	93±2	93±2
Body temperature (°C)	36.6±0.6	36.7±0.6
Respiratory rate (breaths/min)	22±3	21±2

Notes: Data expressed as mean ± SD, unless otherwise specified. ^aForced spirometry performed within 1 year before or after hospitalization, during a stable state (value available for 62% of the patients). ^bForced spirometry performed during the hospital stay (available for all patients).

Abbreviations: ED, emergency department; FEV₁, forced expiratory volume in 1 second; FVC, forced vital capacity; SD, standard deviation.

Primary outcomes

There were 924 evaluations of the oxygen adjustment and monitoring by nurses and 96 evaluations by physicians. Nurses and physicians considered FreeO₂ adjustments and monitoring to be at least as appropriate and as acceptable as manual oxygen management. Only monitoring was deemed slightly better with FreeO₂ by the physicians, but the difference was not statistically significant (Table 2). We did not directly evaluate patient's tolerance of the system, but 80% of the patients completed the study in both groups. The main reason to prematurely stop the study was related to the difficulty in continuously wearing a pulse oximeter and the reduced mobility (70% of the reasons to stop); this occurred similarly in both groups.

Secondary outcomes

Oxygenation and blood gases

SpO₂ targets chosen by physicians were similar in both groups, averaging 90.0% and 90.1% for FreeO₂ and manual O₂ adjustment, respectively. The mean SpO₂ during the study was 90.9±1.2 in the FreeO₂ group and 91.9±1.2 in the manual adjustment group ($P=0.009$). The proportion of time within SpO₂ target was 81.2%±19.9% with FreeO₂ vs 51.3%±19.7%

Table 2 Evaluation of the nurses' and physicians' perception of the appropriateness of the oxygen therapy management

	FreeO ₂ (n=25)	Control (n=25)	P-value
Nurses			
Oxygen titration	8.9±1.5	8.8±1.8	0.46
Oxygen monitoring	8.9±1.4	8.7±2.0	0.19
Physicians			
Oxygen titration	8.2±2.2	7.8±2.1	0.48
Oxygen monitoring	8.2±2.2	6.7±3.2	0.07

Notes: Data expressed as mean ± standard deviation, unless otherwise specified. Based on a 10-point Likert scale (from 0, not appropriate at all, to 10, perfectly appropriate).

with manual O₂ adjustments ($P<0.001$). The percentage of time with severe desaturation (SpO₂ <85%) and with hyperoxia (SpO₂ >5% above the target) was significantly lower with FreeO₂ in comparison with manual oxygen adjustment (Figure 3 and Table 3). There was no significant difference in blood gases measured on day 3 and day 7 between the two groups.

Clinical outcomes

Duration of oxygen administration was reduced by 1.8 days with FreeO₂, but this difference did not reach statistical significance (Table 4). Time from randomization to hospital discharge was reduced by 2.6 days with FreeO₂ ($P=0.051$). There was no difference between the two groups in the requirement for noninvasive ventilation during hospitalization, need of transfer to the intensive care unit, or death. The readmission rates at 30, 60, and 180 days were also similar in the two groups.

Safety

There was no safety issue as we did not record any oxygen delivery interruption with FreeO₂. Few technical issues occurred with end-tidal CO₂ monitoring, but none concerned

Table 3 Oxygenation and capillary blood gases

	FreeO ₂	Control	P-value
SpO ₂ target defined by the physicians (%) ^a	90.0±1.2	90.1±1.0	0.89
Mean SpO ₂ (%)	90.9±1.2	91.9±1.2	0.009
% of time in the SpO ₂ target ±2%	81.2±15.9	51.3±19.7	<0.001
% of time with hyperoxia ^b	1.5±1.9	10.4±10.3	<0.001
% of time with hypoxemia ^c	0.2±0.2	2.3±2.7	0.001
Mean O ₂ flow (L/min) ^d	0.7±0.7	1.2±1.0	0.06
% of time with SpO ₂ signal available	90.4±7.6	82.4±12.7	0.01
Day 3 ^e			
pH	7.42±0.03	7.41±0.05	0.33
PaCO ₂	45±7	46±10	0.62
HCO ₃ ⁻	29±4	29±5	0.94
O ₂ flow (L/min)	1.0±1.1	1.6±1.4	0.21
Day 7 ^f			
pH	7.43±0.02	7.42±0.06	0.46
PaCO ₂	40±4	47±13	0.09
HCO ₃ ⁻	27±2	30±6	0.13
O ₂ flow (L/min)	0.6±0.4	1.2±1.0	0.47

Notes: Data expressed as mean ± standard deviation, unless otherwise specified. ^aAt study entry. ^bHyperoxia was defined by SpO₂ >5% above the target. ^cHypoxemia was defined by SpO₂ <85%. ^dDuring the time of recording. ^eData available (n=25 in both groups). ^fData available (n=12 in the FreeO₂ arm and n=15 in the control group).

the oxygen delivery valve, and this was not associated with safety issues.

Discussion

Our pilot trial demonstrates the feasibility of providing oxygen therapy with FreeO₂ to patients hospitalized for an acute exacerbation of COPD, even during prolonged administration of oxygen (up to 8 consecutive days). The device was well accepted by nurses and physicians. FreeO₂ maintained SpO₂ within the prespecified target better than manual oxygen administration. It also reduced the periods of hyperoxia and desaturation. In addition, our results suggest that FreeO₂ may have the potential to reduce hospital length of stay,

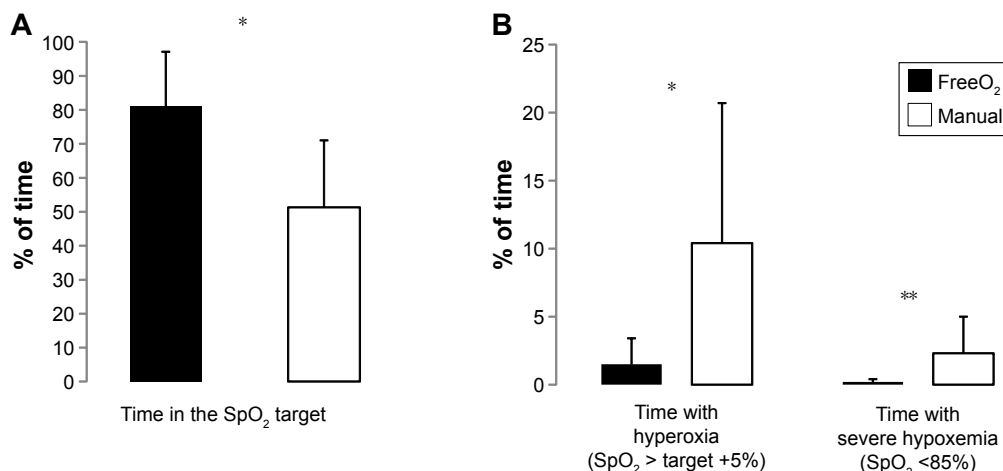


Figure 3 Percentage of time in the SpO₂ target (A), with hyperoxia and with severe hypoxemia (B) with FreeO₂ (black bars) and with manual adjustment (white bars). **Notes:** * $P<0.001$. ** $P=0.01$.

Table 4 Clinical outcome

Outcome	FreeO ₂ patients (n=25)	Control patients (n=25)	P-value
Duration of O₂ administration (days)	4.0±2.1	5.8±9.9	0.14
Length of hospital stay			
Randomization to hospital discharge (days)	5.8±4.4	8.4±6.0	0.051
Admission to hospital discharge (days)	6.7±4.3	9.5±6.0	0.053
Complications			
NIV (n)	0	1	0.48
ICU transfer (n)	0	1	0.48
Death (n)	1	1	1
Readmission rate			
30 days (n)	6	6	1
60 days (n)	6	9	0.54
180 days (n)	10	13	0.57

Note: Data expressed as mean ± standard deviation, unless otherwise specified.
Abbreviations: ICU, intensive care unit; NIV, noninvasive ventilation.

although this pilot observation requires formal testing in a proper clinical trial.

Our study is the first to investigate the potential effects of a continuous and an automated oxygen titration and weaning system on physiological and clinical outcomes in patients hospitalized for an acute exacerbation of COPD. Several studies evaluated similar systems in patients with COPD in other settings, such as home care¹² or during rehabilitation,^{13,14} and in other populations, including neonates^{15,16} and in patients with acute respiratory failure in the emergency department.¹⁷ Automated therapy has always proved effective in safely providing oxygen in these settings and populations, and our results are consistent with this notion.

The introduction of new devices in clinical practice may not be well accepted, and barriers to technology acceptance should not be overlooked.¹⁸ The primary study outcome was selected accordingly. FreeO₂ was deemed at least as adequate for oxygen administration and monitoring as usual oxygen administration. Also, most patients tolerated the instrument, as 80% completed the study in both groups. Few patients did not complete the study due to reduced mobility related to the continuous oximetry recording. Implementation of an oximeter with wireless communication features may further improve the acceptance of O₂ automated systems in the future.

We were successful in continuously recording respiratory parameters with identical oximeters in both groups with second-by-second data available 90.4% and 82.4% of the time in the FreeO₂ and control groups, respectively. As expected and in line with other evaluations of automated oxygen

titration,^{10,14,17} oxygenation parameters were improved in the FreeO₂ group, with more time spent in the targeted range of SpO₂ and less time with oxygen desaturation or hyperoxia. This may be clinically relevant when considering that hyperoxia may induce hypercapnia³⁻⁷ with potentially severe consequences.^{4,8,9} Hyperoxia is also of concern in patients with COPD who frequently have coronary artery disease,¹⁹ as it may increase coronary artery resistance.^{20,21} On the other hand, periods of oxygen desaturations may be responsible for arrhythmias and myocardial ischemia,^{22,23} and they should also be avoided.

In the control group, patients were in the SpO₂ target 50% of the time, which may not be compared with other data, as these are the first data with continuous recording of SpO₂ in this situation to our knowledge. In the recent review of Cousin et al,²⁴ the mean rate of accurate prescription of oxygen therapy in eleven studies was 17.4% before and 51.2% after implementation of specific interventions.

One strength of our study is that we could evaluate an automated oxygen therapy during prolonged duration (ie, up to 8 days), compared with previous studies where automated O₂ titration was provided for a duration of <1 hour^{11,13,14} and up to 3 hours.¹⁷ An important result of our trial is the trend toward a reduction in duration of oxygen therapy and hospital length of stay with automated oxygen titration, although we cannot ascertain whether this effect was related to closer O₂ monitoring and surveillance as a part of the FreeO₂ protocol or whether this was due to the FreeO₂ device itself. Although the trial was not primarily designed to demonstrate an impact on these outcomes, this finding is in agreement with the hypothesis that unnecessarily high flows and prolonged oxygen therapy are common²⁵ and that automated weaning may be useful to abbreviate oxygen therapy in hospitalized patients with COPD. Length of stay must be interpreted in comparison to local statistics obtained off-protocol. In 2010, the mean length of stay for acute exacerbation of COPD in our institution was 9.8±8.1 days (unpublished data), which is in-line with the length of stay in the control group of the present study. Reducing the length of hospital stay by 31% as found in this study would be expected to have major logistic and financial impacts on our health care setting. This study was underpowered to conclude on the hospital length of stay, and larger studies will be required to confirm this potential benefit of automated oxygen titration.

Our study has potential limitations that should be considered for proper interpretation. First, this was a pilot study with a small sample size. A more complete evaluation of

relevant clinical outcomes, such as length of stay and cost effectiveness, will likely require more patients. Second, the recruitment rate was low as we recruited only 50 patients in 3 years. The main reason was the limited resources during prolonged periods that did not allow continuous screening of potential study participants. There were >500 COPD hospitalized every year during the study period, and several of these would have been eligible to the trial. Third, the study was not blinded. Nurses had to be aware of the patients' allocation as they were in charge of the manual titration in the control group, and remote monitoring of cardiorespiratory parameters at the nursing station was available only in the FreeO₂ arm. To limit the impact of this potential source of bias, study investigators were not involved in any treatment or discharge decisions.

Conclusion

This study demonstrates the feasibility of using automated oxygen titration and weaning as well as remote monitoring with the FreeO₂ system in patients hospitalized for acute exacerbation of COPD. The system was well accepted by both nurses and physicians. Automated oxygen titration provided benefits in terms of safety (ie, reduction in the time with severe desaturation and hyperoxia) and may have contributed to a trend toward the reduced hospital length of stay, a potentially important finding, if these benefits are confirmed in subsequent studies specifically designed to demonstrate these effects.

Acknowledgments

Our research laboratory has been funded by the Canadian Foundation for Innovation (Leaders Opportunity Funds) to develop automated systems for respiratory support. Part of this funding was used to make FreeO₂ prototypes. Funding sources had no role in study design, in the collection, analysis, and interpretation of data, in the writing of the report, and in the decision to submit the article for publication. OxyNov provided the FreeO₂ device prototypes. This study was supported by the Groupe de recherche en santé respiratoire de l'Université Laval. This study was presented in part at the 2015 International Conference of the American Thoracic Society, May 15–20, Denver, USA.

Author contributions

All authors contributed toward data analysis, drafting and critically revising the paper, gave final approval of the version to be published, and agree to be accountable for all aspects of the work.

Disclosure

The Fond de Recherche en Santé du Québec contributes to FL's salary for research activities (clinical research scholar) and to the research assistant's salary (clinical research grant). FL and ELH are the coinventors of the FreeO₂ system and made the first prototypes with the engineering department of Laval University. FL and ELH are the cofounders of a Laval University spin-off research and development company (OxyNov) to develop automated systems for respiratory support. FM holds a GlaxoSmithKline/Canadian Institutes of Health Research chair on COPD at Laval University. FM and YL participate in Innovair, a company that owns shares in OxyNov, the owner of the FreeO₂ device. PAB and MR have no financial interests that may be relevant to the submitted work. The authors report no other conflicts of interest in this work.

References

1. Pauwels RA, Buist AS, Calverley PM, Jenkins CR, Hurd SS; GOLD Scientific Committee. Global strategy for the diagnosis, management, and prevention of chronic obstructive pulmonary disease. NHLBI/WHO Global Initiative for chronic obstructive lung disease (GOLD) Workshop summary. *Am J Respir Crit Care Med.* 2001;163(5):1256–1276.
2. Hale KE, Gavin C, O'Driscoll BR. Audit of oxygen use in emergency ambulances and in a hospital emergency department. *Emerg Med J.* 2008;25(11):773–776.
3. Aubier M, Murciano D, Fournier M, Milic-Emili J, Pariente R, Derenne JP. Central respiratory drive in acute respiratory failure of patients with chronic obstructive pulmonary disease. *Am Rev Respir Dis.* 1980;122(2):191–199.
4. Austin MA, Wills KE, Blizzard L, Walters EH, Wood-Baker R. Effect of high flow oxygen on mortality in chronic obstructive pulmonary disease patients in prehospital setting: randomised controlled trial. *BMJ.* 2010;341:c5462.
5. Beasley R, Patel M, Perrin K, O'Driscoll BR. High-concentration oxygen therapy in COPD. *Lancet.* 2011;378(9795):969–970.
6. Sassoon CS, Hassell KT, Mahutte CK. Hyperoxic-induced hypercapnia in stable chronic obstructive pulmonary disease. *Am Rev Respir Dis.* 1987;135(4):907–911.
7. Mithoefer JC, Karetzky MS, Mead GD. Oxygen therapy in respiratory failure. *N Engl J Med.* 1967;277(18):947–949.
8. Plant PK, Owen JL, Elliott MW. One year period prevalence study of respiratory acidosis in acute exacerbations of COPD: implications for the provision of non-invasive ventilation and oxygen administration. *Thorax.* 2000;55(7):550–554.
9. Warren PM, Flenley DC, Millar JS, Avery A. Respiratory failure revisited: acute exacerbations of chronic bronchitis between 1961–68 and 1970–76. *Lancet.* 1980;1(8166):467–470.
10. Claire N, Bancalari E. Automated closed loop control of inspired oxygen concentration. *Respir Care.* 2013;58(1):151–161.
11. Lellouche F, L'Her E. Automated oxygen flow titration to maintain constant oxygenation. *Respir Care.* 2012;57(8):1254–1262.
12. Rice KL, Schmidt MF, Buan JS, Lebahn F, Schwarzock TK. A portable, closed-loop oxygen conserving device for stable COPD patients: comparison with fixed dose delivery systems. *Respir Care.* 2011;56(12):1901–1905.
13. Cirio S, Nava S. Pilot study of a new device to titrate oxygen flow in hypoxic patients on long-term oxygen therapy. *Respir Care.* 2011;56(4):429–434.

14. Lellouche F, Maltais F, Bouchard PA, Brouillard C, L'Her E. FreeO₂: closed-loop adaptation of oxygen flow based on SpO₂. Evaluation in COPD patients during effort. *Respir Care*. In press 2016.
15. Claire N, D'Ugard C, Bancalari E. Automated adjustment of inspired oxygen in preterm infants with frequent fluctuations in oxygenation: a pilot clinical trial. *J Pediatr*. 2009;155(5):640-5.e1-640-5.e2.
16. Claire N, Gerhardt T, Everett R, Musante G, Herrera C, Bancalari E. Closed-loop controlled inspired oxygen concentration for mechanically ventilated very low birth weight infants with frequent episodes of hypoxemia. *Pediatrics*. 2001;107(5):1120-1124.
17. L'Her E, Dias P, Gouillou M, et al. Automatisation of oxygen titration in patients with acute respiratory distress at the emergency department. A multicentric international randomized controlled study. *Am J Respir Critic Care Med*. 2015;191:A6329.
18. Boonstra A, Broekhuis M. Barriers to the acceptance of electronic medical records by physicians from systematic review to taxonomy and interventions. *BMC Health Serv Res*. 2010;10:231.
19. Vanfleteren LE, Franssen FM, Uszko-Lencer NH, et al. Frequency and relevance of ischemic electrocardiographic findings in patients with chronic obstructive pulmonary disease. *Am J Cardiol*. 2011; 108(11):1669-1674.
20. Farquhar H, Weatherall M, Wijesinghe M, et al. Systematic review of studies of the effect of hyperoxia on coronary blood flow. *Am Heart J*. 2009;158(3):371-377.
21. McNulty PH, King N, Scott S, et al. Effects of supplemental oxygen administration on coronary blood flow in patients undergoing cardiac catheterization. *Am J Physiol Heart Circ Physiol*. 2005;288(3): H1057-H1062.
22. Galatius-Jensen S, Hansen J, Rasmussen V, Bildsoe J, Therboe M, Rosenberg J. Nocturnal hypoxaemia after myocardial infarction: association with nocturnal myocardial ischaemia and arrhythmias. *Br Heart J*. 1994;72(1):23-30.
23. Gogenur I, Rosenberg-Adamsen S, Lie C, Carstensen M, Rasmussen V, Rosenberg J. Relationship between nocturnal hypoxaemia, tachycardia and myocardial ischaemia after major abdominal surgery. *Br J Anaesth*. 2004;93(3):333-338.
24. Cousins JL, Wark PA, McDonald VM. Acute oxygen therapy: a review of prescribing and delivery practices. *Int J Chron Obstruct Pulmon Dis*. 2016;11:1067-1075.
25. Brill SE, Wedzicha JA. Oxygen therapy in acute exacerbations of chronic obstructive pulmonary disease. *Int J Chron Obstruct Pulmon Dis*. 2014;9:1241-1252.

International Journal of COPD

Publish your work in this journal

The International Journal of COPD is an international, peer-reviewed journal of therapeutics and pharmacology focusing on concise rapid reporting of clinical studies and reviews in COPD. Special focus is given to the pathophysiological processes underlying the disease, intervention programs, patient focused education, and self management protocols.

Submit your manuscript here: <http://www.dovepress.com/international-journal-of-chronic-obstructive-pulmonary-disease-journal>

Dovepress

This journal is indexed on PubMed Central, MedLine and CAS. The manuscript management system is completely online and includes a very quick and fair peer-review system, which is all easy to use. Visit <http://www.dovepress.com/testimonials.php> to read real quotes from published authors.