

CASE REPORT

Post-Traumatic Ostial Avulsion of a Polar Inferior Renal Artery Treated by Endovascular Covered Aortic Stenting

François Carrozza and Fabrice C. Deprez

Renovascular traumas are rare in abdominal blunt traumas, especially those involving complete avulsion of a renal artery. Their management poses a dilemma between blood flow preservation and the risks of bleeding. We present the case of a rare variant of renovascular injury, with a post traumatic ostial avulsion of a polar inferior renal artery, successfully treated percutaneously by endovascular aortic covered stenting under c-arm cone-beam computed tomography guiding.

Keywords: blunt aortic trauma; accessory renal artery; endovascular treatment; c-arm CBCT

Introduction

Renal trauma accounts for approximately 3% of all trauma admissions [1], the vast majority (80–90%) of cases resulting from blunt rather than penetrating injury. Post-traumatic renovascular lesions are even more rare (0.08% of all abdominal blunt traumas) [2, 3]. In case of serious renal injuries, other organs are frequently injured (75–80%) [2].

Approximately 15–30% of all adult patients have at least one renal accessory artery. Management of injuries to these arteries poses a dilemma between invasiveness, functional loss, blood flow preservation, and the risks of bleeding. We herein present the case of a rare variant of renovascular injury, with an ostial avulsion of a polar inferior artery following blunt trauma that was successfully managed by a covert aortic stenting. No report of this kind was found in the literature.

Case Report

A 34-old-woman without any medical history was admitted after high-speed motorcycle accident. The patient was hemodynamically stable. A multiphase post-contrast total-body computed tomography (CT) revealed several fractures (burst fracture of T4, left scapula, sacrum and several right lumbar transverses processes), pulmonary contusion and avulsion of the right polar inferior artery (RPIA). The RPIA was located 2 cm above the iliac bifurcation, at the same level as the inferior mesenteric artery (IMA). The avulsion

was at the ostium of the artery, showing an ulcer-like contour of the aorta. A retroperitoneal hematoma was associated, but with no active bleeding, meaning a spontaneous thrombosis of the RPIA had occurred. There was no enhancement of the lower pole of the right kidney, corresponding to an infarcted segment supplied by the RPIA (**Figure 1**). A contralateral (left side) polar inferior artery (LPIA) was also present.

Considering the high risk of rebleeding from the aortic stump, we decided to undergo interventional radiology procedure under local anesthesia, using a c-arm CBCT with 3D road-map guidance. The ostial stump of the RPIA was too small to be embolized (4 × 6 mm), with a high risk of perforation. Therefore, we opted for a covered stent. Due to the narrow diameter of the aorta (14 mm), we couldn't use conventional aorto-iliac bifurcated stent graft, so we decided to use a self-expandable stent graft (Zilver 18 × 56 mm, Cook Medical) usually used for iliac extension during endovascular aortic repair (EVAR). This was the shortest one available at the time. A balloon-expandable covered stent was not available either. The inferior mesenteric artery and the left inferior renal artery were inevitably covered, with no consequences for the IMA and an expected infarction of the lower third of the left kidney. The angiographic post-procedure control was excellent (**Figure 2**). Vascular closure device was used (Perclose ProGlide, Abbott Vascular) after 12 Fr vascular sheath removal. Immediate follow-up was without complication. CT performed one year after the treatment confirmed total patency of the aortic stent graft, cortical atrophy of the lower pole of both kidneys and a retrograde perfusion of the IMA. Patient's blood pressure (120/80 mm Hg) and renal function were normal.

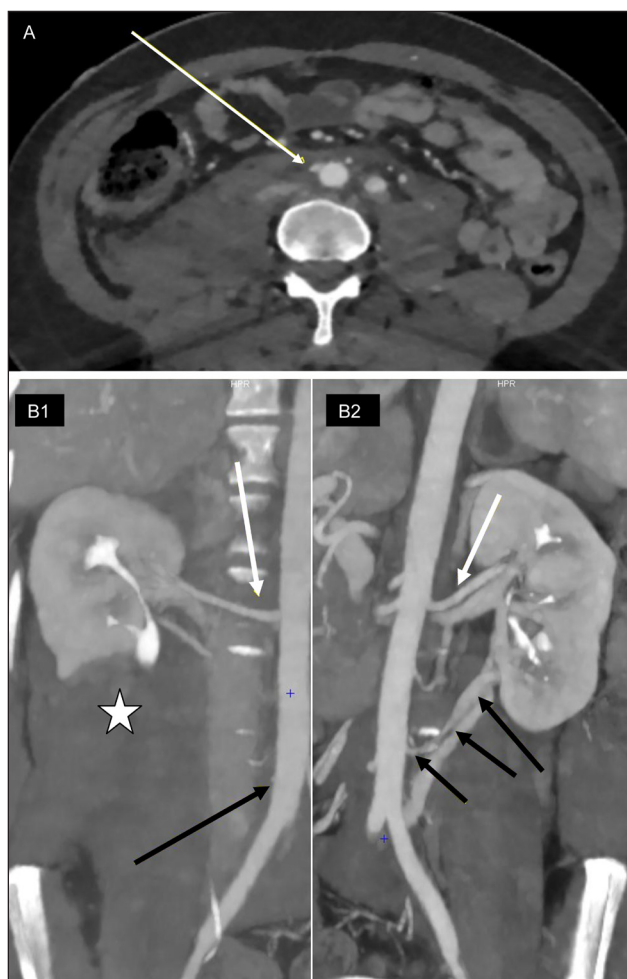


Figure 1: **A:** Enhanced axial CT of the aorta, with an ulcer-like contour (arrow) corresponding to ostial avulsion of the right polar inferior artery (RPIA). **B:** Oblique coronal views of the right (B1) and the left (B2) arterial vascularization of the kidneys, with two main renal arteries (white arrows), a left polar inferior artery (LPPIA – B2, black arrows) and avulsion of the RPIA (B1, black arrow) associated to an infarction of the lower pole of the right kidney (white star).

Discussion

Complete avulsion of the renal artery is a rare but life-threatening injury. CT reveals infarction of the kidney associated with extensive medial perirenal hematoma. Active bleeding on the proximal end of the tear may also be seen [2].

In our case, an accessory renal artery (ARA) was involved, not the main renal artery. Moreover, the lesion was located very close to the ostium of the RPIA. It could be considered as grade 4 renal trauma, corresponding to a segmental renal artery or vein injury (noted by a segmental parenchymal infarct or main renal artery or vein injury with contained hematoma) [4, 5] and as a blunt aortic pseudo-aneurysm.

Complications of blunt abdominal aortic injuries are severe, and non-operative management cannot be considered due to high mortality risk (75%) [6]. The treatment of pseudoaneurysms in blunt aortic trauma is



Figure 2: **A:** 3D(VR) c-arm cone-beam CT view of the aorta, for calibrated measurements, 3D-roadmap and planning of the stenting. The proximal avulsion of the RPIA looks like a 3.7 mm pseudo-aneurysm of the aorta. **B:** 18 x 56 mm self-expandable stent with 14-mm balloon remodeling. **C:** Final angiogram showing perfect positioning of the stent, covering both RPIA and LPPIA, associated with non-enhancement of the lower pole of both left and right kidney.

either surgical or endovascular (stent graft placement). Open surgical treatment with direct aortic suture of the avulsion is a very invasive approach, with a high rate of morbidity, and it involves an unsightly skin scar (to be avoided especially in young female patients). As in our case, patients hemodynamically stable with pseudoaneurysm and with a high likelihood of survival from other associated injuries can be considered for semi-selective (<1 week) repair [7]. Endovascular repair with commercially available stent grafts can safely and effectively treat blunt abdominal aortic injury.

Percutaneous access is associated with a lower frequency of groin infection or lymphocele, and a shorter procedure time and hospital length of stay compared with open surgery. The use of conscious sedation with local anesthesia and percutaneous femoral access has further decreased the morbidity of procedure [8]. Complications of endovascular repair include further aortic wall injury, access complications and contrast-induced nephropathy, but this treatment is associated with less perioperative morbidity and mortality [6]. In our case, the use of endovascular procedure also includes the covering of the LPPIA, increasing the risk of associated renal function loss.

Greenberg et al. reported that accessory renal arteries generally perfuse discrete parenchymal areas and are end arteries [9]. In most cases of their study, accessory renal arteries coverage during EVAR don't result in

compromised renal function or worsening hypertension, even in patients with accessory renal arteries larger than 3 mm in diameter. These results were confirmed by Karmacharya et al. and Malgor et al., confirming that intentional occlusion of accessory renal arteries during EVAR is safe and without consequence [10, 11].

Conclusion

Post-traumatic ostial avulsion of an accessory right polar inferior renal artery is an extremely rare but life-threatening situation that can be successfully treated by endovascular stent-graft placement. Partial renal infarction due to traumatic avulsion or intentional endovascular covering of an ARA is not associated with renal failure or increased hypertension.

Competing Interests

The authors have no competing interests to declare.

References

1. **Miller KS, McAninch JW.** Radiographic assessment of renal trauma: Our 15-year experience. *The Journal of Urology*. 1995; 154(2): 352–55. DOI: [https://doi.org/10.1016/S0022-5347\(01\)67045-9](https://doi.org/10.1016/S0022-5347(01)67045-9)
2. **Kawashima A, Sandler CM, Corl FM,** et al. Imaging of renal trauma: A comprehensive review. *RadioGraphics*. 2001; 21(3): 557–74. DOI: <https://doi.org/10.1148/radiographics.21.3.g01ma11557>
3. **Bittenbinder EN, Reed AB.** Advances in renal intervention for trauma. *Seminars in Vascular Surgery*. 2014; 26(4) 165–69. DOI: <https://doi.org/10.1053/j.semvascsurg.2014.06.012>
4. **Moore EE, Shackford SR, Pachter HL,** et al. Organ injury scaling: Spleen, liver, and kidney. *J Trauma*. 1989; 29(12):1664–66. DOI: <https://doi.org/10.1097/00005373-198912000-00013>
5. **Santucci RA, Mcaninch JW, Safir M, Mario LA, Service S, Segal MR.** Validation of the American Association for the Surgery of Trauma Organ Injury Severity Scale for the Kidney. *The Journal of Trauma and Acute Care Surgery*. 2001; 50(2): 195–200. DOI: <https://doi.org/10.1097/00005373-200102000-00002>
6. **Tobler WD, Tan T-W, Farber A.** Endovascular repair of a blunt abdominal aortic injury. *The International Journal of Angiology: Official Publication of the International College of Angiology*. 2012; 21(2): 117–20. DOI: <https://doi.org/10.1055/s-0032-1315796>
7. **Shalhub S, Starnes BW, Tran NT,** et al. Blunt abdominal aortic injury. *Journal of Vascular Surgery*. 2012; 55(5): 1277–85. DOI: <https://doi.org/10.1016/j.jvs.2011.10.132>
8. **O'Mara JE, Bersin RM.** Endovascular management of abdominal aortic aneurysms: The year in review. *Current Treatment Options in Cardiovascular Medicine*. 2016; 18(8): 54. DOI: <https://doi.org/10.1007/s11936-016-0470-x>
9. **Greenberg JI, Dorsey C, Dalman RL,** et al. Long-term results after accessory renal artery coverage during endovascular aortic aneurysm repair. *Journal of Vascular Surgery*. 2012; 56(2): 291–96; discussion 296–297. DOI: <https://doi.org/10.1016/j.jvs.2012.01.049>
10. **Karmacharya J, Parmer SS, Antezana JN,** et al. Outcomes of accessory renal artery occlusion during endovascular aneurysm repair. *Journal of Vascular Surgery*. 2006; 43(1): 8–13. DOI: <https://doi.org/10.1016/j.jvs.2005.09.008>
11. **Malgor RD, Oderich GS, Vrtiska TJ,** et al. A case-control study of intentional occlusion of accessory renal arteries during endovascular aortic aneurysm repair. *Journal of Vascular Surgery*. 2013; 58(6): 1467–75. DOI: <https://doi.org/10.1016/j.jvs.2013.06.068>

How to cite this article: Carrozza F, Deprez FC. Post-Traumatic Ostial Avulsion of a Polar Inferior Renal Artery Treated by Endovascular Covered Aortic Stenting. *Journal of the Belgian Society of Radiology*. 2020; 104(1): 24, 1–3. DOI: <https://doi.org/10.5334/jbsr.2081>

Submitted: 19 February 2020

Accepted: 17 April 2020

Published: 07 May 2020

Copyright: © 2020 The Author(s). This is an open-access article distributed under the terms of the Creative Commons Attribution 4.0 International License (CC-BY 4.0), which permits unrestricted use, distribution, and reproduction in any medium, provided the original author and source are credited. See <http://creativecommons.org/licenses/by/4.0/>.

Journal of the Belgian Society of Radiology is a peer-reviewed open access journal published by Ubiquity Press.

OPEN ACCESS 