

[¹¹C]-(R)-PK11195 positron emission tomography in patients with complex regional pain syndrome

A pilot study

So Yeon Jeon, MD^a, Seongho Seo, PhD^{b,c}, Jae Sung Lee, PhD^{b,c,d}, Soo-Hee Choi, MD, PhD^{a,e}, Do-Hyeong Lee, MD^a, Ye-Ha Jung, PhD^a, Man-Kyu Song, MD^a, Kyung-Jun Lee, MD^a, Yong Chul Kim, MD, PhD^f, Hyun Woo Kwon, MD^{b,g}, Hyung-Jun Im, MD^{b,g}, Dong Soo Lee, MD, PhD^{b,g}, Gi Jeong Cheon, MD, PhD^{b,d,*}, Do-Hyung Kang, MD, PhD^{a,e,*}

Abstract

Complex regional pain syndrome (CRPS) is characterized by severe and chronic pain, but the pathophysiology of this disease are not clearly understood. The primary aim of our case-control study was to explore neuroinflammation in patients with CRPS using positron emission tomography (PET), with an 18-kDa translocator protein specific radioligand [¹¹C]-(R)-PK11195. [¹¹C]-(R)-PK11195 PET scans were acquired for 11 patients with CRPS (30–55 years) and 12 control subjects (30–52 years). Parametric image of distribution volume ratio (DVR) for each participant was generated by applying a relative equilibrium-based graphical analysis. The DVR of [¹¹C]-(R)-PK11195 in the caudate nucleus ($t_{(21)} = -3.209$, $P = 0.004$), putamen ($t_{(21)} = -2.492$, $P = 0.022$), nucleus accumbens ($t_{(21)} = -2.218$, $P = 0.040$), and thalamus ($t_{(21)} = -2.395$, $P = 0.026$) were significantly higher in CRPS patients than in healthy controls. Those of globus pallidus ($t_{(21)} = -2.045$, $P = 0.054$) tended to be higher in CRPS patients than in healthy controls. In patients with CRPS, there was a positive correlation between the DVR of [¹¹C]-(R)-PK11195 in the caudate nucleus and the pain score, the visual analog scale ($r = 0.661$, $P = 0.026$, $R^2 = 0.408$) and affective subscales of McGill Pain Questionnaire ($r = 0.604$, $P = 0.049$, $R^2 = 0.364$). We demonstrated that neuroinflammation of CRPS patients in basal ganglia. Our results suggest that microglial pathology can be an important pathophysiology of CRPS. Association between the level of caudate nucleus and pain severity indicated that neuroinflammation in this region might play a key role. These results may be essential for developing effective medical treatments.

Abbreviations: BAI = Beck Anxiety Index, BG = basal ganglia, CRPS = complex regional pain syndrome, DVR = distribution volume ratio, MPQ_A = McGill pain Questionnaire_Affective, MRI = magnetic resonance imaging, PET = position emission tomography, ROI = region of interest, SF-MPQ = McGill pain questionnaire Short-form, TSPO = translocator protein, VAS = visual analog scale.

Keywords: central sensitization, complex regional pain syndrome, microglia, neuroinflammation, PK11195-PET

1. Introduction

Complex regional pain syndrome (CRPS) is a debilitating pain condition characterized by chronic severe pain, allodynia, hyperalgesia, motor, and autonomic signs and symptoms, as

well as changes in emotional and cognitive function.^[1] Clinically, CRPS patients are profoundly affected with decreased ability to participate in normal activities of daily living.

Although the pathophysiology of CRPS has not been clearly defined, CRPS is thought to involve peripheral and central

Editor: Orazio Schillaci.

The research was supported by grant no. 04-2010-0560 from the Seoul National University Hospital Research Funds. In addition, it was partly supported by a grant of the Korea Health Technology R&D Project through the Korea Health Industry Development Institute (KHIDI), funded by the Ministry of Health & Welfare, Republic of Korea (grant no. H114C1072). The Seoul National University Hospital had no further role in study design; in the collection, analysis and interpretation of data; in the writing of the report; and in the decision to submit the paper for publication.

The authors have no conflicts of interest to disclose.

^a Department of Neuropsychiatry, Seoul National University Hospital, ^b Department of Nuclear Medicine, Seoul National University College of Medicine, ^c Department of Brain and Cognitive Science, Seoul National University College of Natural Sciences, ^d Institute of Radiation Medicine, Medical Research Center, ^e Department of Psychiatry, Seoul National University College of Medicine, ^f Department of Anesthesiology and Pain Medicine, Seoul National University Hospital, Seoul, ^g Department of Molecular Medicine and Biopharmaceutical Sciences, Graduate School of Convergence Science and Technology, Seoul National University, Suwon, Republic of Korea.

* Correspondence: Gi Jeong Cheon, Department of Nuclear Medicine, Seoul National University College of Medicine, 101 Daehak-ro, Jongno-Gu, Seoul 03080, Republic of Korea (e-mail: larrycheon@gmail.com); Do-Hyung Kang, Department of Psychiatry, Seoul National University College of Medicine, 101 Daehak-ro, Jongno-gu, Seoul 03080, Republic of Korea (e-mail: basuare@hanmail.net)

Copyright © 2017 the Author(s). Published by Wolters Kluwer Health, Inc.

This is an open access article distributed under the Creative Commons Attribution-NoDerivatives License 4.0, which allows for redistribution, commercial and non-commercial, as long as it is passed along unchanged and in whole, with credit to the author.

Medicine (2017) 96:1(e5735)

Received: 1 June 2016 / Received in final form: 30 November 2016 / Accepted: 1 December 2016

<http://dx.doi.org/10.1097/MD.00000000000005735>

sensitization of neuronal function.^[2] Following nerve injury, a cascade of events is initiated that includes peripheral inflammation^[3] and potentially increased inflammation of the central nervous system (CNS). The CNS undergoes functional and structural changes in people with persistent pain. These changes are thought to be particularly important in patients with CRPS^[4] and can lead to central sensitization over the long term.^[5] In CRPS patients, features of central sensitization appear to involve a complex set of neuroinflammatory cellular responses, known as “glial cell activation.”^[4] Normally, glial activation is an adaptive defensive mechanism contributes to handling of acute stress, limiting tissue damage, and restoring homeostasis.^[6] However, malfunctioning glial activation can have deleterious effects and become the primary pathogenic condition.^[7,8] Activated microglia are an important source of inflammatory mediators, thus may play fundamental roles in neuropathic pain.^[9] In a previous study, a cohort of chronic pain patients exhibited persistent microglial activation in their contralateral thalamus by using [¹¹C]-(R)-PK11195 positron emission tomography (PET).^[10] Conversely, the injection of drugs inhibiting glial activation can inhibit, delay, or reverse pain.^[11] Therefore, ongoing CNS inflammation mediated by glial activation is a possible contributing factor to the manifestation and maintenance of the psychophysical/behavioral responses observed in CRPS patients.

Evidence of neuroinflammation is supported by the existence of activated microglia or astrocytes. Activated glial cells demonstrate an increased expression of the 18-kDa translocator protein (TSPO).^[12] [¹¹C]-(R)-(2-chlorophenyl)-N-methyl-N-(1-methylpropyl)-3-isoquinoline-carboxamide PK11195 ([¹¹C]-(R)-PK11195) is a TSPO-specific radioligand.^[13] The normal brain shows relatively low tissue-specific binding of [¹¹C]-(R)-PK11195, as the microglia are in a resting state. [¹¹C]-(R)-PK11195 binding reflects the distribution of microglia activated by brain injury in conditions such as multiple sclerosis and chronic back pain.^[6,14] [¹¹C]-(R)-PK11195 PET is widely used to assess neuroinflammation in neurological diseases (e.g., Alzheimer disease^[15] and idiopathic Parkinson disease^[16]). Although affinities of second-generation TSPO radioligands are known to be varied according to TSPO polymorphism, [¹¹C]-(R)-PK11195 binds to another site on TSPO which is not involved in polymorphism, resulting in no apparent difference in affinity.^[17]

Banati et al^[10] reported an imaging study using [¹¹C]-(R)-PK11195 as a biomarker to visualize neuroinflammation in the CNS *in vivo*. This study indicated that peripheral nerve injury resulted in microglial activation in CNS at the first-order synapses of the injured neurons, and some of this activation propagated to the second-order synapses located in the thalamus.^[10,18] We reviewed studies pertaining to chronic pain, neuroinflammation, and central sensitization to establish a priori hypotheses. In central sensitization, neuroinflammation has often been observed in the thalamus.^[1] In CRPS, putative roles of the basal ganglia (BG) include motor dysfunction as well as alterations in mood, including reward dysfunction.^[19] Furthermore, CRPS patients, especially in type I, exhibit changes in somatosensory systems processing noxious, tactile, and thermal information.^[2] The somatosensory system involving pain perception includes the thalamus, the primary somatosensory cortex, and the insula.^[20] Patients with chronic pain often experience elevated activation of brain regions involved in cognitive and/or emotional pain processing.^[21,22] Therefore, we hypothesized that neuroinflammation would increase in the thalamus, BG, primary somatosensory cortex, insula, and regions involved in pain processing

pathway (primary and secondary somatosensory cortex, anterior cingulate cortex, insula, amygdala, nucleus accumbens (NAc), and thalamus) in CRPS patients.^[1]

The aim of our study was to investigate neuroinflammation using [¹¹C]-(R)-PK11195 PET to observe microglial activation and its association with symptom severity in CRPS patients. Evidence of neuroinflammation in this population would contribute to clarification of CRPS pathophysiology and to the development of objective diagnostic criteria, criteria for evaluation of disease severity, and effective medical treatments.

2. Methods

2.1. Participants

Fifteen patients who fulfilled the International Association for the Study of Pain criteria for CRPS type I were recruited from Seoul National University Hospital (Seoul, Republic of Korea) and United CRPS. Fifteen participants (recruited from an Internet advertisement) who were of comparable age and sex to the CRPS patients were enrolled in this study as healthy controls, and they had no pain or neurological-related symptoms. All participants underwent a detailed neuropsychiatric assessment completed through baseline screening that included a history of accidents, pain symptoms, routine blood analysis, electrocardiogram, and urine analysis. The number of study participants was based on a sample size calculation for a comparison of distribution volume ratio (DVR) between groups. Effect size was estimated from available PK11195 pilot study.^[23] In addition, we used G*power 3.1.9.2 (Heinrich Heine, Universität Düsseldorf, Germany) program^[24] with unpaired *t* test, an 80% power while controlling type I error rate at 5%. The computed sample size was 11 subjects for each group, so we planned to recruit 15 subjects for each group considering potential withdrawal of subjects.

The inclusion criteria for CRPS subjects were as follows: a diagnosis of CRPS type I, an age between 25 and 55 years, and patients who were not taking benzodiazepine or those who could stop the benzodiazepine medication 2 weeks before the study. All eligible patients were enrolled in the clinic and had the project research goals explained to them. The exclusion criteria were as follows: individuals with a major neuropsychiatric disorder before the diagnosis of CRPS, a neurological disease (cerebrovascular disease or brain tumor), a history of brain trauma, and high-sensitivity C-reactive protein (hs-CRP) or leukocytosis, as well as patients who could not undergo the PET/magnetic resonance imaging (MRI) process.

The severity of neuropsychiatric symptoms (depressed mood, anxiety, suicidal tendencies, etc.) was measured in the CRPS patients using the following questionnaires: the Beck Depression Index (BDI),^[25] the Beck Anxiety Index (BAI),^[26] and Korean version of the Mood Disorder Questionnaire.^[27] Sensory and affective dimensions of current pain were assessed with the McGill pain Questionnaire Short-Form (SF-MPQ) which presents 11 McGill pain Questionnaire_Sensory and 4 McGill pain Questionnaire_Affective (MPQ_A) pain items.^[28] SF-MPQ also includes the present pain intensity index and a visual analog scale (VAS). We used subscales of SF-MPQ during analyses. Healthy controls were administered the BAI and BDI questionnaires.

This study was approved by Institutional Review Board at Seoul National University Hospital (Seoul, Republic of Korea). All data were obtained under written informed consent granted by all subjects after a full explanation of the experimental methods.

2.2. Positron emission tomography/magnetic resonance image acquisition

Each participant underwent a 60-minute dynamic [¹¹C]-(R)-PK11195 PET scan using a Siemens Biograph mMR (Siemens medical solution, Knoxville, TN, USA) PET/MRI scanner (PET spatial resolution: 4.4mm at 1cm and 5.2-mm full width half maximum [FWHM] at 10-cm offset from the center of the transverse field-of-view). [¹¹C]-(R)-PK11195 (503±74 MBq) was administered with an intravenous bolus injection, and the PET data were acquired in a 3-dimensional (3D) list mode without arterial blood sampling. A total of 27 dynamic PET frames (12 frames×5 seconds, 5×60, 3×180, 5×300, and 2×600) were reconstructed using filtered back projection followed by 4-mm FWHM Gaussian postfiltering, with routine corrections for physical effects such as radioactive decay and attenuation (using an ultrashort-echo-time MR-based attenuation map).^[29] The reconstructed individual frames consisted of 127 transaxial slices with a matrix size of 344×344, a pixel size of 1.0431×1.0431 mm², and a slice thickness of 2.0313 mm.

2.3. Quantification of binding

A parametric image of the DVR for each participant was generated by applying the relative equilibrium-based graphical analysis based on a reference region to the reconstructed dynamic images.^[30] The time interval for the linearity of the graphical analysis was 30 to 60 minutes for all voxels, and the cerebellum was used as a reference region. The reference input function was obtained by delineating the region of interest (ROI) of the cerebellum on an individual T1-weighted MRI (256×256 matrix; 208 sagittal slices; voxel size: 0.98×0.98×1.00 mm³). The ROI was then placed on the reconstructed dynamic PET images. We did not apply coregistration between PET and MRI because the T1 MRI was simultaneously acquired with the PET data using a 3D Turbo FLASH sequence (repetition time: 1670 ms; echo time: 1.89 ms; flip angle: 9°). For delineating the ROI, we used the FMRIB Integrated Registration and Segmentation Tool (FIRST, FSL v4.0, Oxford University; Oxford, UK, <http://www.fmrib.ox.ac.uk/fsl>). The regional average DVR of ROI were extracted from the spatially normalized unsmoothed DVR images using population-based probability maps,^[31,32] and the mean value for both hemispheres of DVR was used in analyses.

2.4. Synthesis of [¹¹C]-(R)-PK11195 PET

[¹¹C]-(R)-PK11195 was synthesized using the previously reported method with a few modifications.^[33] The precursor and the cold-standard of [¹¹C]-(R)-PK11195 were purchased

from ABX (Radeberg, Germany); the other chemicals were obtained from Sigma-Aldrich Korea (Kyunggi-do, Korea). Briefly, (R)-N-desmethyl-PK11195 (the precursor of [¹¹C]-(R)-PK11195, 1 mg, 2.8 μmol) and sodium hydride (60% in mineral oil, 7mg, 486 μmol) were dissolved in 500 μL of dimethyl sulfoxide in a reaction vial. [¹¹C]CH₃I was bubbled into the reaction vial for 10 minutes, and the reaction mixture was allowed to proceed for an additional 5 minutes. The reaction mixture was purified by preparative high-performance liquid chromatography (HPLC) (Xterra C18 column, 10×250 mm², 10 μm, Waters Corp.; Milford, MA) with the eluent (water: ethanol=55:45, 5 mL/min). The final product solution was reconstituted with 10 mL of a saline solution. The purity of the final product was checked by analytical HPLC (YMC-Triart C18 column, 4.6×100 mm², 3 μm, YMC Co., Ltd.; Kyoto, Japan) with the eluent (water:MeCN=40:60, 1 mL/min). The radioactivity of [¹¹C]-(R)-PK11195 was 5.7±1.8 GBq (156.7±51.3 mCi [n=10]); the specific activity was 215.2±93.7 GBq/μmol (5.8±2.5 Ci/mol [n=10]). The total synthesis time, including formation and purification, was less than 40 minutes from the end of bombardment.

2.5. Statistical analysis

Statistical analyses were performed using SPSS Statistics 21.0 (Chicago, IL). For all the variables, the normality of the distribution was tested with the Kolmogorov–Smirnov test. If normality was satisfied, differences between 2 groups were tested using the Student 2-tailed *t* test, and bivariate correlation was tested using Pearson correlation coefficient. If normality was not satisfied, Mann–Whitney *U* test and the Spearman rho correlation coefficient were used. Regional average DVR of [¹¹C]-(R)-PK11195 were assessed using a Student 2-tailed *t* test. A Pearson correlation analysis was used to evaluated the association between the DVR of [¹¹C]-(R)-PK11195 and the neuropsychiatric assessment scale and subdomain of SF-MPQ. The *P* value deemed to indicate significance was set at 0.05.

3. Results

3.1. Study participants

Fifteen subjects were enrolled in each group, but 11 participants with CRPS and 12 healthy control subjects completed all study procedures. Three CRPS patients and 2 of the healthy control subjects withdrew their consent. Synthesis of the [¹¹C]-(R)-PK11195 precursor failed once in each group. Demographic and clinical characteristics of the subjects are presented in Table 1. Age, the ratio of sex, education, and hs-CRP levels were not

Table 1
Participant’s demographic and clinical characteristics.

Descriptives	Healthy controls (n=12)	CRPS subjects (n=11)	Test value	<i>P</i> [*]
Age, y	42.8±5.9 (30–52)	40.9±8.8 (30–55)	<i>t</i> (21)=0.618	0.543
Sex (n)	10 M, 2 F	8 M, 3 F	$\chi^2_{(1)}$ =0.379	0.538
Education, y	16.1±2.2	14.8±2.4	<i>t</i> (21)=1.333	0.197
hs-CRP, mg/dL	0.13±0.25 (0.01–0.87)	0.29±0.35 (0.01–0.97)	<i>t</i> (21)=−1.278	0.193
Duration of illness, y	N/A	8.9±1.6		
BDI	4.2±4.0 (0–12)	20.6±13.6 (8–53)	<i>t</i> (21)=−3.470	0.003
BAI	3.9±2.6 (0–9)	21.5±15.7 (5–55)	<i>t</i> (21)=−3.641	0.004

Data are shown as mean ± standard deviation (range).

BAI = Beck Anxiety Index, BDI = beck depression index, CRPS = complex regional pain syndrome, F = female, hs-CRP = high-sensitivity C-reactive protein, M = male.

* *P* value derived using 2-sample independent *t* test (χ^2 test for sex).

significantly different between 2 groups. CRPS patients had much higher BDI and BAI scores compared with the healthy control subjects.

3.2. Comparison of [¹¹C]-(R)-PK11195 DVR between the CRPS patients and healthy control subjects

Consistent with our a priori hypotheses, participants with CRPS had a significantly higher [¹¹C]-(R)-PK11195 DVR than the healthy control subjects in the caudate nucleus ($P=0.004$), putamen ($P=0.021$), nucleus accumbens ($P=0.040$), and thalamus ($P=0.026$). Although it was not statistically significant, those of globus pallidus ($P=0.054$) and postcentral gyrus ($P=0.059$) tended to be higher in CRPS patients than in healthy controls (Figs. 1 and 2, Table 2). Contrary to our expectations, there were no significant DVR differences between 2 groups in amygdala ($P=0.998$), cingulate cortex ($P=0.292$), insula ($P=0.232$), and subthalamic nucleus ($P=0.321$).

3.3. Correlation between [¹¹C]-(R)-PK11195 DVR and pain severity in CRPS patients

Our study found significant correlation between pain severity and [¹¹C]-(R)-PK11195 DVR of caudate nucleus among CRPS patients. There is a positive correlation between the [¹¹C]-(R)-PK11195 DVR and the VAS ($r=0.661$, $P=0.026$, $R^2=0.408$) (Fig. 3A), as well as the MPQ_A scores ($P=0.604$, $P=0.049$, $R^2=0.364$) (Fig. 3B). There were no significant correlations between [¹¹C]-(R)-PK11195 DVR of other regions and pain severity. Either, no association was found between [¹¹C]-(R)-PK11195 DVR and hs-CRP, illness duration or other neuropsychiatric assessment scores was observed.

4. Discussion

Neuroinflammation, as indexed by [¹¹C]-(R)-PK11195 DVR, was significantly higher in participants with CRPS than in healthy control subjects. In support of our a priori hypothesis, significant increases in the [¹¹C]-(R)-PK11195 DVR were observed in the caudate nucleus, putamen, nucleus accumbens, and thalamus. In addition, correlation analysis revealed that [¹¹C]-(R)-PK11195

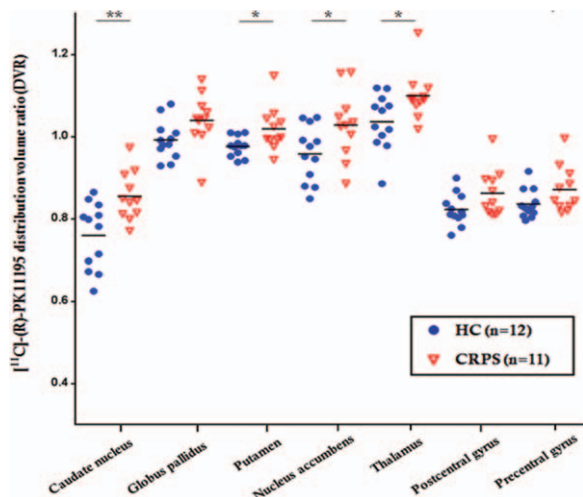


Figure 1. Scatterplot of mean [¹¹C]-(R)-PK11195 distribution volume ratio in healthy controls ($n=12$) and CRPS patients ($n=11$). For each region of interest, the mean value is indicated by horizontal bar. * $P\leq 0.05$, ** $P\leq 0.005$.

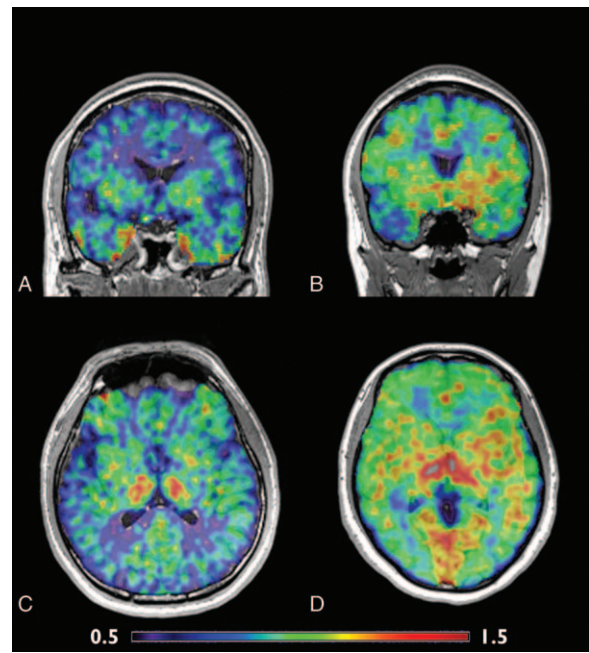


Figure 2. Transverse and coronal sections of [¹¹C]-(R)-PK11195 distribution volume ratio (DVR) maps coregistered to the individual MRI. Compared to a healthy control subject (A and C) a subject with CRPS (B and D) shows increased DVR in basal ganglia. The left brain is shown on the right. The color bar denotes a level of DVR from 0.5 to 1.5.

DVR in the caudate nucleus was associated with higher VAS and MPQ_A scores. Our findings support a role for microglial activation in central sensitization, which could be an underlying contributor to the manifestation and maintenance of psychophysical, behavioral responses, and chronic pain observed in CRPS patients.

Our results are consistent with previously published neurogenic inflammation studies that indicated increased levels of proinflammatory cytokines using methodologically diverse animal and human studies.^[34–36] Although the mechanisms underlying neuroinflammation in CRPS are unclear, 1 plausible explanation is neuronal overactivity. In particular, microglia showed increased activity in pain hypersensitivity following peripheral

Table 2

Regional [¹¹C]-R-PK11195 DVR in 11 CRPS subjects compared to 12 healthy controls.

	Healthy controls	CRPS	P (2-tailed)
Region			
Amygdala	0.97 ± 0.05	0.97 ± 0.08	0.998
Caudate nucleus	0.76 ± 0.08	0.86 ± 0.06	0.004*
Globus pallidus	0.99 ± 0.05	1.04 ± 0.06	0.054
Putamen	0.98 ± 0.02	1.02 ± 0.05	0.021*
Nucleus accumbens	0.96 ± 0.07	1.03 ± 0.08	0.040*
Thalamus	1.04 ± 0.07	1.10 ± 0.06	0.026*
Subthalamic nucleus	1.15 ± 0.08	1.19 ± 0.08	0.321
Cingulate cortex	0.88 ± 0.04	0.90 ± 0.05	0.292
Postcentral gyrus	0.82 ± 0.04	0.86 ± 0.06	0.059
Precentral gyrus	0.84 ± 0.04	0.87 ± 0.06	0.080
Insula	0.92 ± 0.04	0.95 ± 0.06	0.232

Data are mean ± SD. Independent *t* test was conducted. *Significantly different between 2 groups ($P < 0.05$).

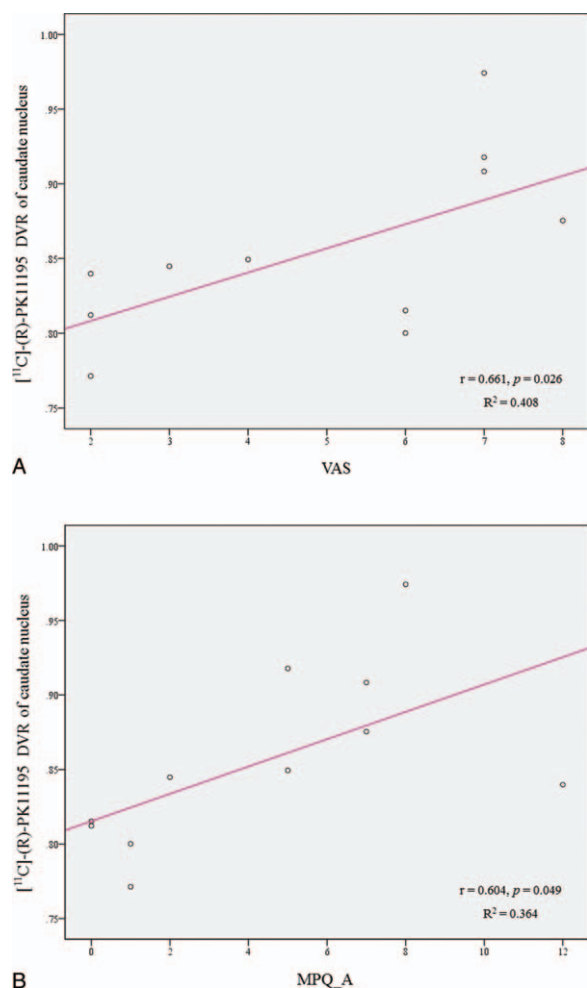


Figure 3. Relationships between $[^{11}\text{C}]-(R)\text{-PK11195}$ distribution volume ratio (DVR) and pain severity scores in CRPS patients. Positive associations were seen between $[^{11}\text{C}]-(R)\text{-PK11195}$ DVR in caudate nucleus and VAS (A), caudate nucleus and McGill Pain Questionnaire_Affective score (B). Pearson coefficient value (r) and P value are shown for each relation. VAS = visual analog scale, MPQ_A = McGill Pain Questionnaire_Affective.

nerve injury.^[37] The microglia play key roles in both neuropathic pain and neurodegenerative diseases, and can respond to proinflammatory signals released from other non-neuronal cells.^[38] Microglial production of proinflammatory cytokines can further recruit microglia and promote the sensitization of CNS nociceptive circuits.^[39] Taken together, because microglia–neuron interactions play a critical role in neuropathic pain, and microglia also control neuronal network excitability,^[40] microglia-related neuroinflammation may be an important mechanism underlying central sensitization in CRPS patients.

As observed in the present study, most subregions of the BG (i.e., the caudate nucleus, putamen, nucleus accumbens, and globus pallidus) show higher $[^{11}\text{C}]-(R)\text{-PK11195}$ DVR in CRPS patients compared with healthy control subjects (Figs. 1 and 2, Table 2). Brain imaging studies performed using various methods (functional MRI, pharmacological MRI, structural MRI, and functional PET) in healthy individuals and those with chronic pain support a role of the BG in pain processing.^[41,42]

In our study, the caudate nucleus was the brain territory that showed the most significant differences between the CRPS and control groups. This region also had a strong positive association with the pain severity scores recorded for each individual. In

support of these findings, a study in another chronic pain disease, a fibromyalgia, demonstrated a decreased regional cerebral blood flow in the caudate nucleus using brain single-photon emission computed tomography.^[43] Previous studies have suggested 2 putative roles for the caudate nucleus in pain: to reduce the pain in affected components elicited by noxious stimuli,^[42] and pain avoidance behavior.^[44] Decreased activation of the caudate nucleus was previously observed in response to mechanical, cold, and heat allodynia in chronic pain conditions.^[45] Similarly, functional imaging in a group of pediatric patients with CRPS also showed a decrease in activation in the caudate nucleus.^[46] Taken together, these data appear to support a neuroinflammation followed by decreased activation of the caudate nucleus in response to pain produced through multiple painful stimuli and is related to the affective component of pain.

BG has been indicated as an important region which take a part in pain processing, including affective, cognitive dimension of pain, and pain modulation.^[42] Studies in patients with lesions of the BG have implied the potential role of BG in pain and analgesia. Patients with infarction of the lenticular nucleus sometimes show sensory deficits.^[47] Deep brain stimulation of the globus pallidus has been reported to alleviate pain symptoms by approximately 70%, and this improvement may persist for a long duration.^[48] Multisensory integration in the BG serves as an important component for the modulation of cortical information to increase data-processing speed.^[49] In acute /chronic pain response, data-processing is fastened in same manner, by the sensory, motor, autonomic, cognitive, and emotional integration.^[42] This mechanism could explain the various symptoms experienced by patients with CRPS. Our results also showed a significant correlation between $[^{11}\text{C}]-(R)\text{-PK11195}$ DVR in the caudate nucleus and pain severity (Fig. 3). Thus, these findings provide an initial understanding of the potential role of the BG in chronic pain disorders.

The thalamus is a key region involved in pain processing; increased neuroinflammation in this region could explain central sensitization of chronic pain in CRPS. Consistent with our results, neuroinflammation of the thalamus has been reported in chronic fatigue syndrome/myalgic encephalomyelitis patients using $[^{11}\text{C}]-(R)\text{-PK11195}$ PET^[12] and in chronic back pain patients using $[^{11}\text{C}]\text{-PBR28}$ PET.^[6]

The paramedian and anterolateral parts of the thalamus are known to be involved with central pain processing. The striatum receives excitatory signals from the thalamus, while the centromedian and parafascicular thalamic nuclei send connections to the putamen and caudate via thalamostriatal projection.^[42] Although not yet observed in the human brains of chronic pain patients, preclinical studies have evaluated various receptor associated with inflammation (Interleukin (IL)-6, IL-1 β , IL-18, and N-methyl-D-aspartate receptors) in the thalamus of mice. The study shows altered reactivity to pain, stress, and anxiety-related behaviors.^[50]

Pain engages emotion/reward/motivational circuitry (e.g., the nucleus accumbens). Induction of acute emotional or physical pain in patients with chronic pain conditions, through exposure to reminders of the deceased or thermal pain, robustly engages the key reward and reinforcement structure.^[51] In the study presented here, we did not observe correlations between DVR uptake in the NAc and pain severity, depressed mood, and/or anxiety symptoms; however, the NAc showed significantly higher uptake of DVR in CRPS patients than in healthy controls. These findings could suggest that persistent neuroinflammation in this region results in a chronic pain state and induces an altered

hedonic state, disorder of pleasure evaluation, and dysfunction of reward processing. The results of the present study indicated increased DVR in the postcentral gyrus, a primary somatosensory cortex, in CRPS patients compared with the healthy control group. This increased uptake may be related to cortical reorganization in CRPS. Studies using structural MRI have reported significant cortical shrinkage of the somatosensory cortex in patients with chronic back pain^[52] and CRPS patients.^[41]

Several limitations of this study should be discussed. Our work only examined a small number of CRPS type I patients. Thus, future studies with larger sample size will be required to generalize this finding to CRPS patients as a whole. The CRPS patients included in this study were taking analgesic agents, including opioids, during the study period, and we were therefore unable to exclude this analgesic effect in the results. However, we did examine subjects who were not taking benzodiazepine drugs, which directly affects TSPO-binding affinities, for at least 2 weeks before the [¹¹C](R)-PK11195 PET examination to minimize medication effect.

In conclusion, this is the first in vivo investigation of neuroinflammation using [¹¹C](R)-PK11195 PET imaging in CRPS patients. The increased DVR was detectable in patients many years after injury, indicating long-term reorganization of these brain regions. This glial activation may reflect continually changed afferent activity, even beyond the first-order projection area of the injured neurons. These results provide evidence of neuroinflammation, potentially a key mechanism underlying the central sensitization in CRPS and highlight a fascinating area for future research.

Acknowledgments

The authors thank all the participants in this study, especially from the CRPS support organization, Korea.

References

- Linnman C, Becerra L, Borsook D. Inflaming the brain: CRPS a model disease to understand neuroimmune interactions in chronic pain. *J Neuroimmune Pharmacol* 2012;8:547–63.
- Jänig W, Baron R. Complex regional pain syndrome is a disease of the central nervous system. *Clin Auton Res* 2002;12:150–64.
- Tal M. A role for inflammation in chronic pain. *Curr Rev Pain* 1999;3:440–6.
- Del Valle L, Schwartzman RJ, Alexander G. Spinal cord histopathological alterations in a patient with longstanding complex regional pain syndrome. *Brain Behav Immun* 2009;23:85–91.
- Woolf CJ, Thompson SW. The induction and maintenance of central sensitization is dependent on N-methyl-D-aspartic acid receptor activation; implications for the treatment of post-injury pain hypersensitivity states. *Pain* 1991;44:293–9.
- Loggia ML, Chonde DB, Akeju O, et al. Evidence for brain glial activation in chronic pain patients. *Brain* 2015;138:604–15.
- Pekny M, Pekna M. Astrocyte reactivity and reactive astrogliosis: costs and benefits. *Physiol Rev* 2014;94:1077–98.
- Rolls A, Shechter R, Schwartz M. The bright side of the glial scar in CNS repair. *Nat Rev Neurosci* 2009;10:235–41.
- Milligan ED, Watkins LR. Pathological and protective roles of glia in chronic pain. *Nat Rev Neurosci* 2009;10:23–36.
- Banati RB, Cagnin A, Brooks DJ, et al. Long-term trans-synaptic glial responses in the human thalamus after peripheral nerve injury. *Neuroreport* 2001;12:3439–42.
- Guo W, Wang H, Watanabe M, et al. Glial-cytokine-neuronal interactions underlying the mechanisms of persistent pain. *J Neurosci* 2007;27:6006–18.
- Nakatomi Y, Mizuno K, Ishii A, et al. Neuroinflammation in patients with chronic fatigue syndrome/myalgic encephalomyelitis: an [¹¹C](R)-PK11195 PET study. *J Nucl Med* 2014;55:945–50.
- Chauveau F, Boutin H, Van Camp N, et al. Nuclear imaging of neuroinflammation: a comprehensive review of [¹¹C] PK11195 challengers. *Eur J Nucl Med Mol Imaging* 2008;35:2304–19.
- Banati RB, Newcombe J, Gunn RN, et al. The peripheral benzodiazepine binding site in the brain in multiple sclerosis. *Brain* 2000;123:2321–37.
- Edison P, Archer HA, Gerhard A, et al. Microglia, amyloid, and cognition in Alzheimer's disease: An [¹¹C](R) PK11195-PET and [¹¹C] PIB-PET study. *Neurobiol Dis* 2008;32:412–9.
- Gerhard A, Pavese N, Hotton G, et al. In vivo imaging of microglial activation with [¹¹C](R)-PK11195 PET in idiopathic Parkinson's disease. *Neurobiol Dis* 2006;21:404–12.
- Owen DR, Yeo AJ, Gunn RN, et al. An 18-kDa translocator protein (TSPO) polymorphism explains differences in binding affinity of the PET radioligand PBR28. *J Cereb Blood Flow Metab* 2012;32:1–5.
- Cooper MS, Clark VP. Neuroinflammation, neuroautoimmunity, and the co-morbidities of complex regional pain syndrome. *J Neuroimmune Pharmacol* 2012;8:452–69.
- Geha PY, Baliki MN, Harden RN, et al. The brain in chronic CRPS pain: abnormal gray-white matter interactions in emotional and autonomic regions. *Neuron* 2008;60:570–81.
- Apkarian AV, Bushnell MC, Treede R-D, et al. Human brain mechanisms of pain perception and regulation in health and disease. *Eur J Pain* 2005;9:463–1463.
- Henry DE, Chiodo AE, Yang W. Central nervous system reorganization in a variety of chronic pain states: a review. *PM&R* 2011;3:1116–25.
- Lee D-H, Lee K-J, Cho KIK, et al. Brain alterations and neurocognitive dysfunction in patients with complex regional pain syndrome. *J Pain* 2015;16:580–6.
- Grover VPB, Pavese N, Koh S-B, et al. Cerebral microglial activation in patients with hepatitis C: in vivo evidence of neuroinflammation. *J Viral Hepat* 2012;19:e89–96.
- Erdfelder E, Faul F, Buchner A. GPOWER: a general power analysis program. *Behav Res Methods Instrum Comput* 1996;28:1–1.
- Beck AT, Steer RA, Carbin MG. Psychometric properties of the beck depression inventory: twenty-five years of evaluation. *Clin Psychol Rev* 1988;8:77–100.
- Beck AT, Epstein N, Brown G, et al. An inventory for measuring clinical anxiety: psychometric properties. *J Consult Clin Psychol* 1988;56:893–7.
- Jon D-I, Hong N, Yoon B-H, et al. Validity and reliability of the Korean version of the Mood Disorder Questionnaire. *Compr Psychiatry* 2009;50:286–91.
- Melzack R. The short-form McGill pain questionnaire. *Pain* 1987;30:191–7.
- An HJ, Seo S, Kang H, et al. MRI-based attenuation correction for PET/MRI using multiphase level-set method. *J Nucl Med* 2016;57:587–93.
- Zhou Y, Ye W, Brasić JR, et al. A consistent and efficient graphical analysis method to improve the quantification of reversible tracer binding in radioligand receptor dynamic PET studies. *Neuroimage* 2009;44:661–70.
- Lee JS, Lee DS. Analysis of functional brain images using population-based probabilistic atlas. *Curr Med Imaging Rev* 2005;1:81–7.
- Kang KW, Lee DS, Cho JH, et al. Quantification of F-18 FDG PET images in temporal lobe epilepsy patients using probabilistic brain atlas. *Neuroimage* 2001;14:1–6.
- Shah F, Hume SP, Pike VW, et al. Synthesis of the enantiomers of [N-methyl-¹¹C] PK 11195 and comparison of their behaviours as radioligands for PK binding sites in rats. *Nucl Med Biol* 1994;21:573–81.
- Birklein F. Complex regional pain syndrome. *J Neurol* 2005;252:131–8.
- LeBlanc BW, Zerah ML, Kadasi LM, et al. Minocycline injection in the ventral posterolateral thalamus reverses microglial reactivity and thermal hyperalgesia secondary to sciatic neuropathy. *Neurosci Lett* 2011;498:138–42.
- Parkitny L, McAuley JH, Di Pietro F, et al. Inflammation in complex regional pain syndrome: a systematic review and meta-analysis. *Neurology* 2013;80:106–17.
- Tsuda M, Mizokoshi A, Shigemoto-Mogami Y, et al. Activation of p38 mitogen-activated protein kinase in spinal hyperactive microglia contributes to pain hypersensitivity following peripheral nerve injury. *Glia* 2004;45:89–95.
- Skaper SD, Facci L, Giusti P. Mast cells, glia and neuroinflammation: partners in crime? *Immunology* 2014;141:314–27.
- Taves S, Berta T, Chen G, et al. Microglia and spinal cord synaptic plasticity in persistent pain. *Neural Plast* 2013;2013:753656–1753656.
- Ferrini F, De Koninck Y. Microglia control neuronal network excitability via BDNF signalling. *Neural Plast* 2013;2013:429815–1429815.

- [41] Barad MJ, Ueno T, Younger J, et al. Complex regional pain syndrome is associated with structural abnormalities in pain-related regions of the human brain. *J Pain* 2014;15:197–203.
- [42] Borsook D, Upadhyay J, Chudler EH, et al. A key role of the basal ganglia in pain and analgesia—insights gained through human functional imaging. *Mol Pain* 2010;6:27.
- [43] Mountz JM, Bradley LA, Modell JG, et al. Fibromyalgia in women. *Arthritis Rheum* 1995;38:926–38.
- [44] Koyama T, Kato K, Mikami A. During pain-avoidance neurons activated in the macaque anterior cingulate and caudate. *Neurosci Lett* 2000;283:17–20.
- [45] Becerra L, Harter K, Gonzalez RG, et al. Functional magnetic resonance imaging measures of the effects of morphine on central nervous system circuitry in opioid-naive healthy volunteers. *Anesth Analg* 2006;103:208–16.
- [46] Lebel A, Becerra L, Wallin D, et al. fMRI reveals distinct CNS processing during symptomatic and recovered complex regional pain syndrome in children. *Brain J Neurol* 2008;131(Pt 7):1854–79.
- [47] Russmann H, Vingerhoets F, Ghika J, et al. Acute infarction limited to the lenticular nucleus: clinical, etiologic, and topographic features. *Arch Neurol* 2003;60:351–5.
- [48] Loher TJ, Burgunder J-M, Weber S, et al. Effect of chronic pallidal deep brain stimulation on off period dystonia and sensory symptoms in advanced Parkinson's disease. *J Neurol Neurosurg Psychiatry* 2002;73:395–9.
- [49] Leyden J, Kleinig T. The role of the basal ganglia in data processing. *Med Hypotheses* 2008;71:61–4.
- [50] Benatti C, Alboni S, Montanari C, et al. Central effects of a local inflammation in three commonly used mouse strains with a different anxious phenotype. *Behav Brain Res* 2011;224:23–34.
- [51] Elman I, Zubieta J-K, Borsook D. The missing p in psychiatric training: why it is important to teach pain to psychiatrists. *Arch Gen Psychiatry* 2011;68:12–20.
- [52] Schmidt-Wilcke T, Leinisch E, Gänßbauer S, et al. Affective components and intensity of pain correlate with structural differences in gray matter in chronic back pain patients. *Pain* 2006;125:89–97.