

Research Article

Clinical Analysis of Fetal Lung Development Index and Pregnancy Outcome in Pregnant Women with Gestational Diabetes Mellitus with Satisfactory Blood Glucose Control

Ting Han,¹ Xiao-dan Jin,² Ju-fang Yang,³ and Yan Tang⁴ 

¹Maternal Health Care Department, Hunan Maternal and Child Health Hospital, Changsha, Hunan, China

²Ultrasound Department, Hunan Maternal and Child Health Hospital, Changsha, Hunan, China

³Medical Section, Hunan Maternal and Child Health Hospital, Changsha, Hunan, China

⁴Health Management Center, Hunan Maternal and Child Health Hospital, Changsha, Hunan, China

Correspondence should be addressed to Yan Tang; tangyan198214@126.com

Received 9 May 2022; Revised 28 July 2022; Accepted 24 August 2022; Published 19 September 2022

Academic Editor: Yuvaraja Teekaraman

Copyright © 2022 Ting Han et al. This is an open access article distributed under the Creative Commons Attribution License, which permits unrestricted use, distribution, and reproduction in any medium, provided the original work is properly cited.

Objective. To explore the regularity of fetal lung development of pregnant women with gestational diabetes mellitus (GDM) with satisfactory blood glucose control and the clinical analysis with pregnancy outcome. **Methods.** 120 GDM pregnant women with satisfactory blood glucose control (GDM group) and 200 normal pregnant women undergoing prenatal examination (Control group) from 31 to 38⁺⁶ weeks of gestation were included. The two groups of pregnant women were divided into 8 time periods according to the gestational age, respectively. The parameters of Doppler flow velocity curve of fetal main pulmonary artery, diameter lines of fetal lung development, mode of delivery, neonatal weight, neonatal asphyxia, neonatal respiratory distress syndrome (NRDS), and neonatal pneumonia were, respectively, compared and analyzed between the two groups. **Results.** Acceleration time (AT) and AT/ejection time (AT/ET) were positively correlated with gestational age, and AT/ET showed stronger correlation than AT, while no significant difference in AT and AT/ET between the two groups ($P > 0.05$). There was a positive correlation between the diameter of fetal lung development and gestational age, but there was no significant difference between the two groups ($P > 0.05$). In addition, there was no significant difference between the two groups in fetal delivery mode, neonatal weight, neonatal asphyxia, NRDS, and neonatal pneumonia ($P > 0.05$). **Conclusion.** AT/ET may be a potential index to evaluate fetal lung maturity. There was no difference in fetal lung development and neonatal birth outcome between pregnant women with satisfactory GDM blood glucose control and the normal pregnant women. The pregnancy of GDM pregnant women lasts until the end of 37~38 weeks, and the neonatal incidence rate is decreased. The key is to manipulate the blood glucose in the normal range.

1. Introduction

Gestational diabetes mellitus (GDM) is a common pregnancy complication affecting the health of mothers and infants, which is a crucial inducing factor for neonatal respiratory distress syndrome (NRDS) as well as a variety of adverse pregnancy outcomes, affecting the growth and development of the fetus and leading to adverse pregnancy outcomes such as abnormal fetus, premature birth, macrosomia, intrauterine distress, fetal asphyxia, and neonatal hypoglycemia [1, 2]. Studies have concluded a spiraling rate

of about 5% in the incidence rate of pregnancy complicated with diabetes in the world [3], and as high as 15% in China. Therefore, analyzing its impact on fetal growth and development is essential and premier for avoiding adverse pregnancy outcomes and enhancing the birth quality of newborns.

Robert et al. found that the risk of NRDS in pregnant women with GDM is six times higher than that in normal pregnant women, whose greatest impact of GDM on the fetus is the delay of fetal lung maturity [4]. Accurate prenatal evaluation of fetal lung maturity can help obstetricians

accurately grasp the delivery opportunity of pregnant women and reduce the incidence of NRDS [5]. Especially in the face of obstetric emergencies such as premature delivery, premature rupture of membranes, and placenta previa, the determination of fetal lung maturity can reduce the perinatal incidence rate and mortality, and plays a vital role in improving the quality of obstetrics [6]. At present, the clinical evaluation of fetal lung maturity is mainly based on amniotic fluid aspiration and analysis of lecithin/sphingomyelin (L/S) ratio and lamellar body count (LBC) [7, 8]. Because amniocentesis is an invasive operation, which has operational risks and accidents, and is difficult for pregnant women to accept, the application of prenatal assessment of fetal lung maturity in clinical work is very limited [9, 10]. Therefore, it is urgent to develop a noninvasive, safe, and efficient method for prenatal assessment of fetal lung maturity to meet the actual clinical needs.

Understanding the growth law of fetal lung and fetal pulmonary circulation is the basis for evaluating fetal lung maturity [11]. Although the tissue structure of fetal lung did not develop until 36 weeks, the outline of fetal lung could be clearly displayed in the second trimester of pregnancy. The growth law of fetal lung could be reflected by measuring the diameter lines of fetal lung through imaging examination [12]. With the development of color Doppler flow imaging technology, it is gradually used to evaluate fetal pulmonary circulation (mainly pulmonary artery flow) [13, 14]. In order to acquire a more objective basis, this subject intends to compare the differences of fetal main pulmonary artery Doppler flow curve parameters, fetal lung development diameter lines, and neonatal birth outcomes between GDM pregnant women with satisfactory blood glucose control and normal pregnant women, exploring the law of fetal lung development in the two groups and the correlation between fetal main pulmonary artery Doppler flow curve parameters and fetal lung maturity, and determining the most significant parameters, so as to reflect the maturity of fetal lung development. It provides a noninvasive method for clinicians to evaluate fetal lung maturity, and also serves as a reference basis for clinical management of GDM pregnant women and grasping the time point of delivery.

2. Data and Methods

2.1. Research Object and Grouping. 160 singleton pregnant women conducting regular prenatal visits and inpatient deliveries in our hospital from October 2020 to December 2021 and diagnosed with GDM before 28 weeks of gestation and satisfactory blood glucose control were selected as the GDM group. 213 normal singleton pregnant women undergoing prenatal examination and delivered in hospital in the same period were selected as the control group. All pregnant women voluntarily accepted the examination on the premise of informed consent. This study was approved by the ethics committee of the Hunan Maternal and Child Health Hospital (2020-S080).

Inclusion criteria (GDM group): ① pregnant women are healthy with accurate and regular menstruation and have no bad habits and other diseases; ② Early ultrasound

examination of the gestational week of the fetus confirmed to the actual gestational week, and structural malformations were excluded by ultrasound system screening during pregnancy; ③ GDM pregnant women had satisfactory blood glucose control from 31 weeks to termination of pregnancy. ④ Single live fetus.

Exclusion criteria (GDM group): ① abnormal blood glucose found in the process of test; ② Failure to satisfactorily display the Doppler flow spectrum of fetal right lung and main pulmonary artery due to maternal obesity or other reasons; ③ The presence of large artery malformations or other malformations which may affect fetal respiratory function.

Inclusion criteria (Control group): ① pregnant women are healthy with accurate and regular menstruation and have no bad habits and other diseases; ② Early ultrasound examination of the gestational week of the fetus confirmed to the actual gestational week, and structural malformations were excluded by ultrasound system screening during pregnancy; ③ Single live fetus.

Exclusion criteria (Control group): ① fetal malformations possibly affecting respiratory function or large artery malformations and other serious cardiac malformations; ② The Doppler flow spectrum of fetal right lung and main pulmonary artery fail to be displayed satisfactorily due to maternal obesity or other reasons.

According to the screening criteria, 120 pregnant women were included in the GDM group and 200 were in the control group. The age of pregnant women in the GDM group was 26~37 years, and the blood glucose was 4.3~5.2 mmol/L. The age of pregnant women in the control group was 25~36 years, and the blood glucose was 3.7~4.9 mmol/L. The two groups of pregnant women were divided into 8 time periods according to the gestational age from 31 to 38⁺⁶ weeks, respectively. 15 persons in the study group and 25 persons in the control group were selected at each time period. Figure 1 shows the inclusion process of the participants.

2.2. Diagnostic Criteria for GDM. The diagnostic criteria for GDM refer to the health industry standard of the people's Republic of China WS 331-2011, diagnosis of gestational diabetes [15]. Pregnant women routinely underwent 75 g glucose tolerance test (OGTT) at point in 24~28 weeks of pregnancy. Patients with abnormal blood glucose at any point are supposed to be diagnosed as GDM. The whole blood fasting or premeal blood glucose ≤ 5.3 mmol/L, and whole blood glucose ≤ 6.7 mmol/L 2 hours after meal were defined as the criteria for satisfactory blood glucose control of pregnant women with GDM.

2.3. Instruments and Methods. Firstly, the fetal systems were screened to eliminate malformations, and the fetal size was determined to be in line with the normal gestational week. Anatomically, the left lung is more likely to be affected by the heart and prone to deviation in the process of measurement, so the right lung is selected to observe the indicators of fetal lung development.

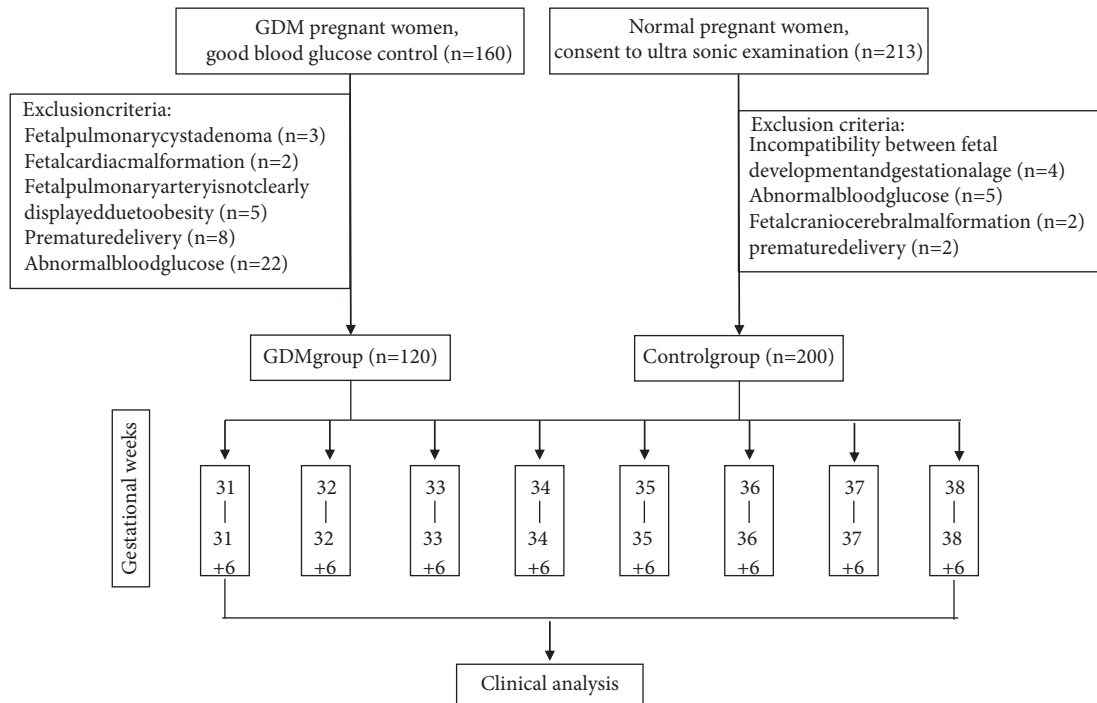


FIGURE 1: Flowchart of participant inclusion.

Measurement of Doppler parameters: the short axis section of fetal heart bottom was taken, the bimodal fetal pulmonary artery flow velocity curve was obtained (Figure 2), acceleration time (AT) and ejection time (ET) were measured by manual spectrum profilometry, with the AT/ET ratio calculated. They were measured at least three times and the average value was taken.

Measurement of fetal lung development index: the standard four chamber cardiac section was taken, and the area of right lung, chest area (excluding spine), anterior posterior diameter of right lung and left and right diameter of right lung at the end of diastole (Figure 3) were manually outlined; the sagittal section of the right lung was taken and the upper and lower diameters of the right lung were measured (Figure 4).

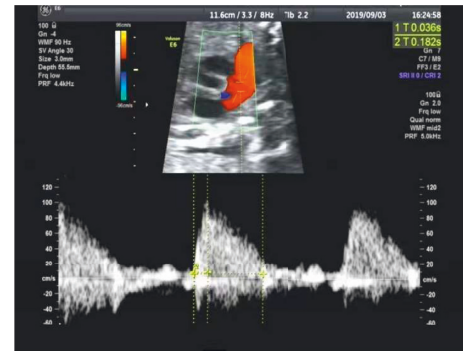


FIGURE 2: Measurement methods of acceleration time (AT) and ejection time (ET).

2.4. Maternal and Infant Follow-Up Records

- (1) Record the basic information: age, gestational week of delivery, mode of delivery and neonatal weight
- (2) Record the neonatal condition: neonatal hypoglycemia, neonatal pneumonia, NRDS, neonatal asphyxia, neonatal death, and other indicators

2.5. Statistical Analysis. All the statistical analyses were performed by using SPSS22.0 software. The statistical description of measurement data was mean ± standard deviation (SD) and Student’s *t*-test was used for the comparison



FIGURE 3: Fetal lung development index: right lung area.

TABLE 1: Comparison of basic conditions between the two groups.

Group	GDM group (n = 120)	Control group (n = 200)	T	P value
Age (year)	31.3 ± 5.1	30.2 ± 4.9	-0.121	0.795
Gestational week of delivery	37.8 ± 0.6	37.2 ± 0.5	1.124	0.192
Mode of delivery (cesarean section rate)	37 (31.16)	57 (28.69)	0.153	0.234
Neonatal weight (g)	3322.23 ± 143.2	3298.54 ± 171.1	0.171	0.215

TABLE 2: Comparison of Doppler flow velocity parameters in pregnant women with gestational diabetes mellitus.

Group	Gestational weeks	N	AT (ms)	ET (ms)	AT/ET
1	31-31 ⁺⁶	15	38.23 ± 4.12	177.79 ± 14.23	0.208 ± 0.016
2	32-32 ⁺⁶	15	39.13 ± 4.25	180.34 ± 11.38	0.218 ± 0.021
3	33-33 ⁺⁶	15	40.34 ± 3.78	179.82 ± 12.68	0.229 ± 0.012
4	34-34 ⁺⁶	15	41.52 ± 3.34	179.56 ± 11.32	0.231 ± 0.011
5	35-35 ⁺⁶	15	42.68 ± 3.49	178.81 ± 15.13	0.239 ± 0.023
6	36-36 ⁺⁶	15	44.72 ± 2.33	180.33 ± 11.61	0.241 ± 0.033
7	37-37 ⁺⁶	15	46.23 ± 3.35	180.26 ± 12.22	0.251 ± 0.019
8	38-38 ⁺⁶	15	46.82 ± 8.12	181.05 ± 10.36	0.257 ± 0.026
	F		43.175	8.625	108.171
	P value		0.023	0.735	0.009

TABLE 3: Comparison of Doppler flow velocity parameters in the control group of pregnant women with different gestational weeks.

Group	Gestational weeks	N	AT (ms)	ET (ms)	AT/ET
1	31-31 ⁺⁶	25	38.83 ± 4.02	178.72 ± 10.23	0.216 ± 0.019
2	32-32 ⁺⁶	25	39.66 ± 4.12	180.92 ± 10.12	0.225 ± 0.029
3	33-33 ⁺⁶	25	41.32 ± 2.23	180.22 ± 10.68	0.231 ± 0.016
4	34-34 ⁺⁶	25	41.62 ± 2.34	180.56 ± 9.32	0.234 ± 0.014
5	35-35 ⁺⁶	25	43.26 ± 3.99	179.81 ± 10.13	0.241 ± 0.023
6	36-36 ⁺⁶	25	45.22 ± 3.18	181.13 ± 11.61	0.245 ± 0.198
7	37-37 ⁺⁶	25	46.03 ± 3.35	180.56 ± 11.36	0.250 ± 0.023
8	38-38 ⁺⁶	25	46.54 ± 4.12	181.45 ± 9.34	0.255 ± 0.022
	F		68.137	4.825	128.064
	P value		0.011	0.827	0.006

TABLE 4: Comparison of Doppler parameters of fetal main pulmonary artery between the two groups.

Gestational weeks		AT (ms)	ET (ms)	AT/ET
31-31 ⁺⁶	T	8.023	5.238	13.242
	P	0.254	0.423	0.132
32-32 ⁺⁶	T	6.547	3.942	12.132
	P	0.486	0.521	0.243
33-33 ⁺⁶	T	5.124	3.432	10.265
	P	0.532	0.611	0.335
34-34 ⁺⁶	T	3.243	2.657	9.465
	P	0.597	0.638	0.413
35-35 ⁺⁶	T	1.738	2.123	8.967
	P	0.797	0.715	0.638
36-36 ⁺⁶	T	1.533	1.874	8.226
	P	0.802	0.756	0.654
37-37 ⁺⁶	T	1.213	1.324	6.325
	P	0.847	0.833	0.713
38-38 ⁺⁶	T	0.823	0.125	1.634
	P	0.839	0.908	0.806

pregnancy; for GDM patients free from insulin therapy, it is recommended to observe until 40 weeks then terminate pregnancy. However, whether the new diagnostic criteria of

GDM should be utilized still remains controversial. This study shows no significant difference in the gestational weeks of delivery, neonatal incidence rate, perinatal

TABLE 5: Comparison of lung development indexes of fetuses in pregnant women with gestational diabetes mellitus.

Group	Gestational weeks	N	RLa	Ta	Upper and lower diameter	Left and right diameter	Anterior and posterior diameter
1	31–31 ⁺⁶	15	10.72 ± 1.09	29.69 ± 3.01	4.44 ± 0.47	2.53 ± 0.27	6.26 ± 0.40
2	32–32 ⁺⁶	15	10.99 ± 1.56	30.80 ± 2.70	4.59 ± 0.46	2.58 ± 0.25	6.40 ± 0.379
3	33–33 ⁺⁶	15	11.14 ± 2.07	31.61 ± 2.55	4.60 ± 0.43	2.73 ± 0.24	6.52 ± 0.38
4	34–34 ⁺⁶	15	11.96 ± 1.15	32.17 ± 1.81	4.68 ± 0.41	2.95 ± 0.24	6.71 ± 0.36
5	35–35 ⁺⁶	15	12.40 ± 1.36	35.13 ± 2.81	4.71 ± 0.42	3.04 ± 0.23	6.93 ± 0.36
6	36–36 ⁺⁶	15	13.36 ± 2.24	37.10 ± 2.35	4.88 ± 0.49	3.10 ± 0.23	7.09 ± 0.36
7	37–37 ⁺⁶	15	14.02 ± 1.75	38.65 ± 1.56	4.98 ± 0.45	3.20 ± 0.22	7.24 ± 0.31
8	38–38 ⁺⁶	15	14.30 ± 2.03	39.26 ± 1.15	5.06 ± 0.44	3.39 ± 0.17	7.31 ± 0.34
	F		36.852	164.119	35.499	111.347	182.359
	P Value		0.003	0.001	0.003	0.002	0.001

TABLE 6: Measurement results of lung development indexes in the control group of pregnant women.

Group	Gestational weeks	N	RLa	Ta	Upper and lower diameter	Left and right diameter	Anterior and posterior diameter
1	31–31 + 6	25	10.28 ± 1.02	28.91 ± 2.46	4.41 ± 0.57	2.48 ± 0.27	6.19 ± 0.33
2	32–32 + 6	25	10.69 ± 1.34	30.22 ± 2.15	4.46 ± 0.43	2.52 ± 0.23	6.33 ± 0.26
3	33–33 + 6	25	10.94 ± 1.62	30.53 ± 2.57	4.48 ± 0.42	2.65 ± 0.19	6.49 ± 0.29
4	34–34 + 6	25	11.23 ± 1.54	31.56 ± 2.38	4.59 ± 0.45	2.74 ± 0.22	6.59 ± 0.26
5	35–35 + 6	25	12.33 ± 2.12	35.56 ± 3.68	4.68 ± 0.16	2.98 ± 0.18	6.88 ± 0.21
6	36–36 + 6	25	13.12 ± 2.11	37.08 ± 2.14	4.85 ± 0.35	3.02 ± 0.17	7.01 ± 0.24
7	37–37 + 6	25	13.88 ± 1.51	38.33 ± 1.85	4.93 ± 0.25	3.18 ± 0.16	7.22 ± 0.33
8	38–38 + 6	25	14.21 ± 2.24	38.82 ± 1.23	5.01 ± 0.21	3.24 ± 0.13	7.31 ± 0.12
	F		22.831	178.031	44.972	105.741	163.185
	P Value		0.002	≤0.001	0.002	0.001	0.001

TABLE 7: Comparison of neonatal outcomes.

Group	GDM group (n = 120)	Control (n = 200)	t	P Value
Neonatal respiratory distress syndrome (NRDS)	3 (2.500)	3 (1.500)	0.962	0.910
Neonatal pneumonia	8 (6.670)	11 (5.550)	0.921	0.891
Neonatal hypoglycemia	7 (5.830)	9 (4.500)	0.954	0.881
Neonatal asphyxia	6 (5.000)	11 (5.550)	0.972	0.923
Neonatal death	0 (0.000)	0 (0.000)	—	—

mortality, and the incidence of macrosomia between the GDM pregnant women satisfied with blood glucose control depending on reasonable diet and exercise and those of normal pregnant women, indicating a possibility that the gestation of GDM pregnant women lasts until the 37th to 38th weeks to reduce the neonatal morbidity, with the crux of controlling blood glucose within the normal range.

In conclusion, pregnant women with GDM who have satisfactory glycemic control do not differ from normal pregnant women in fetal lung development and neonatal birth outcomes. Diabetes screening and examination should be accepted as soon as possible during pregnancy, with the key to ensuring health education guidance and monitoring during GDM pregnancy. Manipulating blood glucose within the standard range can reduce the risk of adverse perinatal outcomes.

Data Availability

The data used to support the findings of this study are available from the corresponding author upon request.

Conflicts of Interest

The authors declare that they have no conflicts of interest.

Acknowledgments

This work was supported by Hunan Provincial Department of Science and Technology Project (Project Nos. 2020SK50604 and 2017SK4006).

References

- [1] M. B. Landon, L. Mele, and C. Y. Spong, "The relationship between maternal glycemia and perinatal outcome," *Obstetrics & Gynecology*, vol. 117, no. 5, pp. 1230–1231, 2011.
- [2] E. D. Szmuiowicz, J. L. Josefson, and B. E. Metzger, "Gestational diabetes mellitus," *Endocrinology and Metabolism Clinics of North America*, vol. 48, no. 3, pp. 479–493, 2019.
- [3] L. Editorial, "The global challenge of diabetes," *The Lancet*, vol. 371, no. 9626, p. 1723, 2008.
- [4] M. F. Robert, R. K. Neff, J. P. Hubbell, H. W. Taeusch, and M. E. Avery, "Association between maternal diabetes and the

- respiratory-distress syndrome in the newborn,” *New England Journal of Medicine*, vol. 294, no. 7, pp. 357–360, 1976.
- [5] B. Marinov, N. Jekova, A. Andreeva, and S. Hitrova, “[Antenatal ambroxol administration for prevention of respiratory distress syndrome in preterm infants: preliminary report],” *Akusherstvo I Ginekologiya*, vol. 50, no. 4, pp. 17–22, 2011.
- [6] J. M. Piper, “Lung maturation in diabetes in pregnancy: if and when to test,” *Seminars in Perinatology*, vol. 26, no. 3, pp. 206–209, 2002.
- [7] L. D. E. Wijnberger, M. de Kleine, H. A. M. Voorbij, and B. W. J. ArabinBruinseVisserBossuytMol, “Prediction of fetal lung immaturity using gestational age, patient characteristics and fetal lung maturity tests: a probabilistic approach,” *Archives of Gynecology and Obstetrics*, vol. 281, no. 1, pp. 15–21, 2010.
- [8] A. E. Besnard, S. A. Wirjosoekarto, K. A. Broeze, B. C. Opmeer, and B. W. J. Mol, “Lecithin/sphingomyelin ratio and lamellar body count for fetal lung maturity: a meta-analysis,” *European Journal of Obstetrics & Gynecology and Reproductive Biology*, vol. 169, no. 2, pp. 177–183, 2013.
- [9] D. G. Grenache and A. M. Gronowski, “Fetal lung maturity,” *Clinical Biochemistry*, vol. 39, no. 1, pp. 1–10, 2006.
- [10] F. López Sánchez, E. Delgado Sánchez, I. Duyos Mateo, and J. González ÁlvarezAntolín AlvaradoBartha, “Evaluation of fetal lung maturity by quantitative analysis (quantusFLM) in women with gestational diabetes mellitus,” *Fetal Diagnosis and Therapy*, vol. 45, no. 5, pp. 345–352, 2019.
- [11] J. A. Kitterman, “Physiological factors in fetal lung growth,” *Canadian Journal of Physiology and Pharmacology*, vol. 66, no. 8, pp. 1122–1128, 1988.
- [12] G. Kasprian, C. Balassy, P. C. Brugger, and D. Prayer, “MRI of normal and pathological fetal lung development,” *European Journal of Radiology*, vol. 57, no. 2, pp. 261–270, 2006.
- [13] R. Gagnon and M. Van den Hof, “The use of fetal Doppler in obstetrics,” *Journal of Obstetrics and Gynaecology Canada*, vol. 25, no. 7, pp. 601–614, 2003.
- [14] E. Cynober, D. Cabro, B. Haddad, and R. GabrielMorettiGamghuijeny, “Fetal pulmonary artery Doppler waveform: a preliminary report,” *Fetal Diagnosis and Therapy*, vol. 12, no. 4, pp. 226–231, 1997.
- [15] S. G. Gabbe and B. Persson, “International association of diabetes and pregnancy study groups recommendations on the diagnosis and classification of hyperglycemia in pregnancy,” *Diabetes Care*, vol. 33, no. 3, pp. 676–682, 2010.
- [16] H. B. Thibault, B. Kurtz, M. J. Raheer, and M. ShaikWaxmanDerumeauxHalpernBlochScherrer-Crosbie, “Noninvasive assessment of murine pulmonary arterial pressure,” *Circulation: Cardiovascular Imaging*, vol. 3, no. 2, pp. 157–163, 2010.
- [17] K. Yared, P. Noseworthy, A. E. Weyman, and A. L. McCabePicardBaggish, “Pulmonary artery acceleration time provides an accurate estimate of systolic pulmonary arterial pressure during transthoracic echocardiography,” *Journal of the American Society of Echocardiography*, vol. 24, no. 6, pp. 687–692, 2011.
- [18] R. Chaoui, F. Taddei, G. Rizzo, and R. BastLenzBollmann, “Doppler echocardiography of the main stems of the pulmonary arteries in the normal human fetus,” *Ultrasound in Obstetrics and Gynecology*, vol. 11, no. 3, pp. 173–179, 1998.
- [19] O. Langer, “The controversy surrounding fetal lung maturity in diabetes in pregnancy: a re-evaluation,” *Journal of Maternal-Fetal and Neonatal Medicine*, vol. 12, no. 6, pp. 428–432, 2002.
- [20] F. Mimouni, M. Miodovnik, J. A. Whitsett, and R. C. HolroydeSiddiqiTsang, “Respiratory distress syndrome in infants of diabetic mothers in the 1980s: no direct adverse effect of maternal diabetes with modern management,” *Obstetrics & Gynecology*, vol. 69, no. 2, pp. 191–195, 1987.