

Nuclear factor- κ B p65 regulates glutaminase I expression in human hepatocellular carcinoma

Meng Dong¹
Lin Miao²
Fengmei Zhang³
Shengshui Li³
Jingzhi Han¹
Ruohui Yu¹
Shuo Qie⁴

¹Department of Hepatobiliary Surgery, Hebei Cangzhou Hospital of Integrated Traditional Chinese and Western Medicine, Cangzhou, Hebei 061001, China; ²Departments of Obstetrics and Gynecology, Yixingbu Hospital, Beichen, Tianjin 300402, China; ³Department of Pathology, Hebei Cangzhou Hospital of Integrated Traditional Chinese and Western Medicine, Cangzhou, Hebei 061001, China; ⁴Department of Biochemistry and Molecular Biology, Medical University of South Carolina, Charleston, SC, USA

Correspondence: Meng Dong
Department of Hepatobiliary Surgery,
Hebei Cangzhou Hospital of Integrated
Translational Chinese and Western
Medicine, 31 Huanghe W Rd, Yunhe Qu,
Cangzhou, Hebei 061001, China
Tel +86 135 8273 0379
Email dongmeng1980@sina.com

Shuo Qie
Department of Biochemistry and
Molecular Biology, Medical University
of South Carolina, Rm HO709, Hollings
Cancer Center, 86 Jonathan Lucas St,
Charleston, SC 29425, USA
Tel +1 215 530 2190
Email qie@musc.edu

Background: Glutaminase (GLS), the key enzyme that catalyzes glutamine catabolism, facilitates the production of energy, building blocks, and factors resisting stresses. Two isoforms of GLS have been identified: GLS1 and GLS2. Elevated GLS1 contributes to tumorigenesis and tumor progression. This study investigates the molecular mechanism by which GLS1 is regulated in human hepatocellular carcinoma (HCC).

Methods: Online databases were investigated to search for factors that co-overexpress with *GLS1*. siRNA knockdown or chemical compounds were utilized to manipulate the activation or inactivation of nuclear factor- κ B (NF- κ B) p65 signaling. Both the mRNA and protein levels of *GLS1* were detected. The biological and clinical importance of p65-GLS1 in HCC was also demonstrated.

Results: NF- κ B p65 regulates GLS1 expression in HCC cells. Knockdown or suppression of GLS1 compromises HCC cell proliferation. Elevated GLS1 expression correlates with neoplasm histological grade, and the dysregulation of p65-GLS1 is associated with poor prognosis in human HCC patients.

Conclusion: GLS1 can be developed as a diagnostic and therapeutic target for human HCC.

Keywords: hepatocellular carcinoma, NF- κ B p65, glutaminase, proliferation, prognosis

Introduction

Hepatocellular carcinoma (HCC) ranks as the sixth most common cancer and is one of the leading causes of death globally.¹ More than 500,000 new cases are diagnosed every year. Although the diagnosis and treatment of HCC have been improved a lot, the prognosis remains poor for most patients.² The development and progression of HCC are the results of aberrant genetic and epigenetic changes that lead to dysregulated signaling pathways. The complexity of these regulating networks makes current treatment ineffective; therefore, there is an urgent need for new therapeutic targets.

Tumorigenesis is a process depending on metabolic reprogramming as the results of activation of oncogenes and/or loss of function of tumor suppressors.^{3,4} For example, dysregulated glucose and glutamine metabolism has been demonstrated in human tumors.^{5,6} Glutamine, a conditionally essential amino acid, can be utilized for energy production, as a nitrogen source, and for antagonizing reactive oxygen species, thus contributing to various biological processes of human tumors.⁷ The key enzymes for glutamine metabolism include two isoforms of glutaminase (GLS): GLS1 and GLS2.⁸ GLS1 is elevated in HCC tissues compared to normal liver and other liver diseases, including hepatocellular adenoma, dysplastic nodules, focal nodular hyperplasia, and fibrotic liver; moreover, elevated GLS1 expression correlates with poor prognosis,

highlighting that GLS1 can be targeted as a therapeutic candidate.⁹ Although GLS2 has been extensively studied in HCC, its biological function remains elusive. Some studies showed that restoration of GLS2 suppresses the growth of HCC cells both *in vitro* and *in vivo*,¹⁰ and elevated GLS2 expression correlates with longer survival;⁹ while another study demonstrated that GLS2 promotes the proliferation of Hepa 1.6 cells in mouse xenograft in a liver receptor homologue-1 (LRH-1)-dependent manner.¹¹ Various mechanisms are involved in the regulation of GLS1 expression in HCC, such as the miR-192/-204–HOTTIP axis,¹² p53,¹³ LRH-1, and peroxisome proliferator-activated receptor- α ;¹⁴ however, it remains unclear whether other mechanisms also regulate GLS1 expression.

Nuclear factor- κ B (NF- κ B), as a transcription factor, regulates various aspects of cell cycle progression, immune responses, cell and tissue differentiation, and DNA damage repair.¹⁵ The NF- κ B family includes NF- κ B1 (p50/p105), NF- κ B2 (p52/p100), RelA (p65), RelB, and c-Rel, which form dimers and regulate gene transcription.¹⁶ Among these dimers, the most commonly activated one is formed by p50 and p65 subunits. Several studies have demonstrated that NF- κ B activation facilitates the production of cytokines and chemokines and the maintenance of an inflammatory environment, leading to the development of HCC.¹⁷ NF- κ B p65 regulates the expression and activity of GLS1 in human breast cancer cells and leukemic cells, and knockdown of *GLS1* compromises cell proliferation.^{18–20}

In this study, online cancer Genomewide databases from OncoPrint™ and cBioPortal were utilized to identify factors that co-overexpress with *GLS1* in human HCC; thereafter, genetic manipulation or chemical treatment was performed to consolidate the correlation between NF- κ B p65 and GLS1 in HCC cell lines; lastly, the biological function and clinical significance of GLS1 were analyzed.

Materials and methods

Patient samples

Six HCC tumor tissues and their normal counterparts were collected from the Department of Pathology at Cangzhou Hospital of Integrated Traditional Chinese and Western Medicine (TCM-WM), Hebei, China.

Ethics approval and informed consent

All patients whose tissue samples were used in this research have provided written informed consent, and the Institutional Review Board for Human Research from Cangzhou Hospital of Integrated TCM-WM approved this study.

OncoPrint analysis

OncoPrint analysis was performed using the online cancer microarray database.^{21,22} The expression of *c-Myc*, *p65*, and *GLS1* was analyzed at the transcriptional level in selected HCC data sets.

cBioPortal analysis

The cBioPortal for Cancer Genomics was accessed.²³ It provides a good source through which to visualize, analyze, and download different cancer genomic data sets.²⁴ Among the HCC data sets, Liver Hepatocellular Carcinoma (LIHC) (The Cancer Genome Atlas [TCGA], Provisional) with 442 samples was selected for further analyses of *GLS1* and neoplasm histological grade.^{25,26}

Cell culture

Human HCC HepG2 and Hep3B cells were obtained from the Chinese Academy of Sciences Cell Bank of Type Culture Collection (CBTCCAS, Shanghai, China). The cells were cultured in DMEM with 10% fetal bovine serum, 2 mM L-glutamine, and 100 U/L penicillin–streptomycin, and maintained at 37°C in a humidified incubator with 5% CO₂.

Chemicals and antibodies

Phorbol 12-myristate 13-acetate (PMA) (P8139) and BAY 11-7082 (B5556) were bought from Sigma-Aldrich (St. Louis, MO, USA). Bis-2-(5-phenyl acetamido-1,3,4-thiadiazol-2-yl)ethyl sulfide (BPTES) (S7753) was purchased from Selleck Chemicals (Houston, TX, USA).

Mouse anti-GLS1 (ab60709), rabbit anti-GLS1 (ab156876), and rabbit anti-p65 (ab16502) antibodies were bought from Abcam (Cambridge, UK); c-Myc (sc-40), β -actin (sc-130300), and Lamin B (sc-6216) antibodies were purchased from Santa Cruz (Dallas, TX, USA).

siRNA transfection

Prior to transfection, cells were seeded into 60 mm dishes and cultured overnight. On the following day, the medium was removed and fresh Opti-MEM (Thermo Fisher Scientific, Waltham, MA, USA) was added. siRNAs were transfected at a concentration of 100 nM. Six hours later, fresh complete medium was added to the cells. Four-eight hours post-transfection, the cells were collected for further analysis. Control, c-Myc, p65, and GLS1 siRNAs were purchased from Sigma-Aldrich (St. Louis, MO, USA).

Quantitative real-time reverse transcription polymerase chain reaction (qRT-PCR)

Upon relative treatment, cells were lysed, and total RNA was isolated using TRIzol (Thermo Fisher Scientific,

Waltham, MA, USA). Total mRNA was reverse transcribed to cDNA using the iScript™ cDNA Synthesis Kit (Bio-Rad, Hercules, CA, USA) following the manufacturer's protocol. After the cDNA was synthesized, qRT-PCR was performed using the SsoAdvanced™ Universal SYBR® Green Supermix (Bio-Rad) on the CFX96 Touch™ Real-Time PCR Detection System (Bio-Rad). Human *GLS1* primers were 5'-CTCCAAGAATACCAAGTC-3' and 5'-TTACAACAATCCATCAAGA-3', and β -*actin* primers were 5'-ATATGAGATGCGTTGTTA-3' and 5'-AAGTATTAAGGCGA AGAT-3'. Data were analyzed in CFX Manager software (Bio-Rad, Hercules, CA, USA).

Protein fractionation

Cells treated with NF- κ B activator or inhibitor were fractionated to test the localization of p65 in the cytoplasm and nucleus. In general, after treatment, cells were collected in harvest buffer (10 mM HEPES pH 7.9, 50 mM NaCl, 0.5 M sucrose, 0.1 mM EDTA, and 0.5% Triton X 100) supplemented with protease and phosphatase inhibitors plus 1 mM DTT. Pelleted nuclei were washed in buffer A with 10 mM HEPES pH 7.9, 10 mM KCl, 0.1 mM EDTA, and 0.1 mM EGTA, and then lysed in buffer C including 10 mM HEPES pH 7.9, 500 mM NaCl, 0.1 mM EDTA, 0.1 mM EGTA, and 0.1% NP-40. Both cytoplasmic and nuclear extracts were centrifuged at 15,000 rpm for 15 min at 4°C and resolved by Western blot.

Western blot analysis

For total protein isolation, cells were lysed in RIPA buffer (50 mM Tris pH 7.5, 150 mM NaCl, 1.0% NP-40, 0.1% sodium dodecyl sulfate [SDS], and 0.5% deoxycholic acid) supplemented with protease and phosphatase inhibitors. The same amount of protein was resolved by 10% SDS-polyacrylamide gel electrophoresis and transferred to a polyvinylidene difluoride (PVDF) membrane (Immobilon P; Millipore, Burlington, MA, USA) using standard procedures. After blocking in 5% non-fat milk, membranes were incubated with primary antibodies overnight at 4°C. Upon incubation with horseradish peroxidase-conjugated secondary antibodies, the signal was monitored using enhanced chemiluminescence (ECL) reagent (Pierce, Waltham, MA, USA).

Cell proliferation

HepG2 and Hep3B cells, transfected with control and *GLS1* siRNA or treated with BPTES, were seeded in 24-well plates with a starting number of 2×10^3 . At 6, 24, 72, and 120 h post-seeding, cells were fixed in 4% paraformaldehyde for 15 min

and then stained with 0.1% crystal violet for 20 min. After washing, the crystal violet signal was extracted using 10% acetic acid. The signal was read at 595 nm in a Bio-Tek Epoch Microplate Reader (Winooski, VT, USA). The 6 h signal was set as Day 0, and the "fold change" was calculated by dividing data of Day 1, Day 3, and Day 5 by data of Day 0.

Immunohistochemical (IHC) staining

Paraffin-embedded sections were microwaved, blocked, and incubated with p65 and *GLS1* antibodies, and the signal was amplified using the SP-9000 kit (Zhangshan Golden Bridge Biotechnology Co., Beijing, China) and detected by Elivision Plus (Zhongshan Golden Bridge Biotechnology Co., Beijing, China). Following IHC staining, all sections were counterstained with hematoxylin, dehydrated, and mounted. Normal rabbit immunoglobulin G was used as a negative control. Sections were assessed by two independent pathologists who were blinded to the clinical information. The staining index was evaluated as previously reported.^{27,28}

SurvExpress survival analysis

SurvExpress is an online biomarker database that can be used to explore patients' survival rate with specific biomarkers.^{29,30} The tool takes a gene list as an input and generates Kaplan–Meier curves as well as gene expression heatmaps. In this study, two data sets with the most HCC samples were chosen. The default setting of SurvExpress was set to perform the correlation analysis between *p65-GLS1* and patients' outcome.

Statistical analysis

SPSS version 24.0 (IBM Corp., Armonk, NY, USA) was used for statistical analysis. Student's *t*-test, one-way analysis of variance, and Kruskal–Wallis test were used to compare data. For survival analysis, survival rates were calculated using the Kaplan–Meier method, and statistical significance was identified using the log-rank test. The significance level was set at 0.05 for all the analyses.

Results

OncoPrint analysis indicates co-overexpression of *GLS1* with p65 in HCC

To directly test the expression of *c-Myc*, *p65*, and *GLS1* in HCC, OncoPrint analysis was performed. OncoPrint is an online cancer microarray database that is suitable for genome-wide expression analyses.²¹ Three independent data sets were chosen from the eight liver cancer data sets: Wurmbach Liver, with 35 HCC and 10 normal tissues; Roessler Liver, with 22 HCC and 21 normal tissues; and

Roessler Liver 2, with 225 HCC and 220 normal tissues. A clear upregulation of *GLS1* in HCC was detected in all three data sets. Elevated *NF- κ B p65* expression was also monitored in these data sets (Figure 1A, B, D, E, G, and H), however, *c-Myc* did not change accordingly (Figure 1C, F, and I), suggesting co-overexpression of *GLS1* with *p65* but not *c-Myc* in HCC samples.

Knockdown or suppression of p65 reduces *GLS1* expression in HCC cells

To investigate how *GLS1* is regulated in HCC, *c-Myc* knockdown was performed in HCC cells. Consistent with the Oncomine data, *c-Myc* knockdown did not alter *GLS1* expression in HCC cells (Figure 2A). Since co-overexpression of *p65* and *GLS1* was detected, to further establish the direct relation between *p65* and *GLS1*, siRNA was transfected to

knockdown *p65* in HCC cells. Western blot showed effective knockdown of *p65* in accordance with *GLS1* downregulation (Figure 2B). A previous report showed that *NF- κ B p65* alters *GLS1* expression at mRNA levels.¹⁸ To demonstrate whether *GLS1* is also transcriptionally regulated by *p65* in HCC cells, qRT-PCR was applied to detect *GLS1* mRNA levels. Knockdown of *p65* reduced *GLS1* mRNA levels (Figure 2C), highlighting a transcriptional regulation. To address the importance of *p65* in controlling *GLS1* expression, chemical compounds were applied to either activate (PMA) or inhibit (BAY 11-7082) the *NF- κ B* signaling pathway. *p65* activation is indicated by its localization to the nucleus.¹⁸ Western blot indicated the localization of *p65* in the nucleus upon PMA treatment, while BAY 11-7082 antagonized its activation (Figure 2D and G). Transcriptionally, PMA induced *GLS1* mRNA while BAY

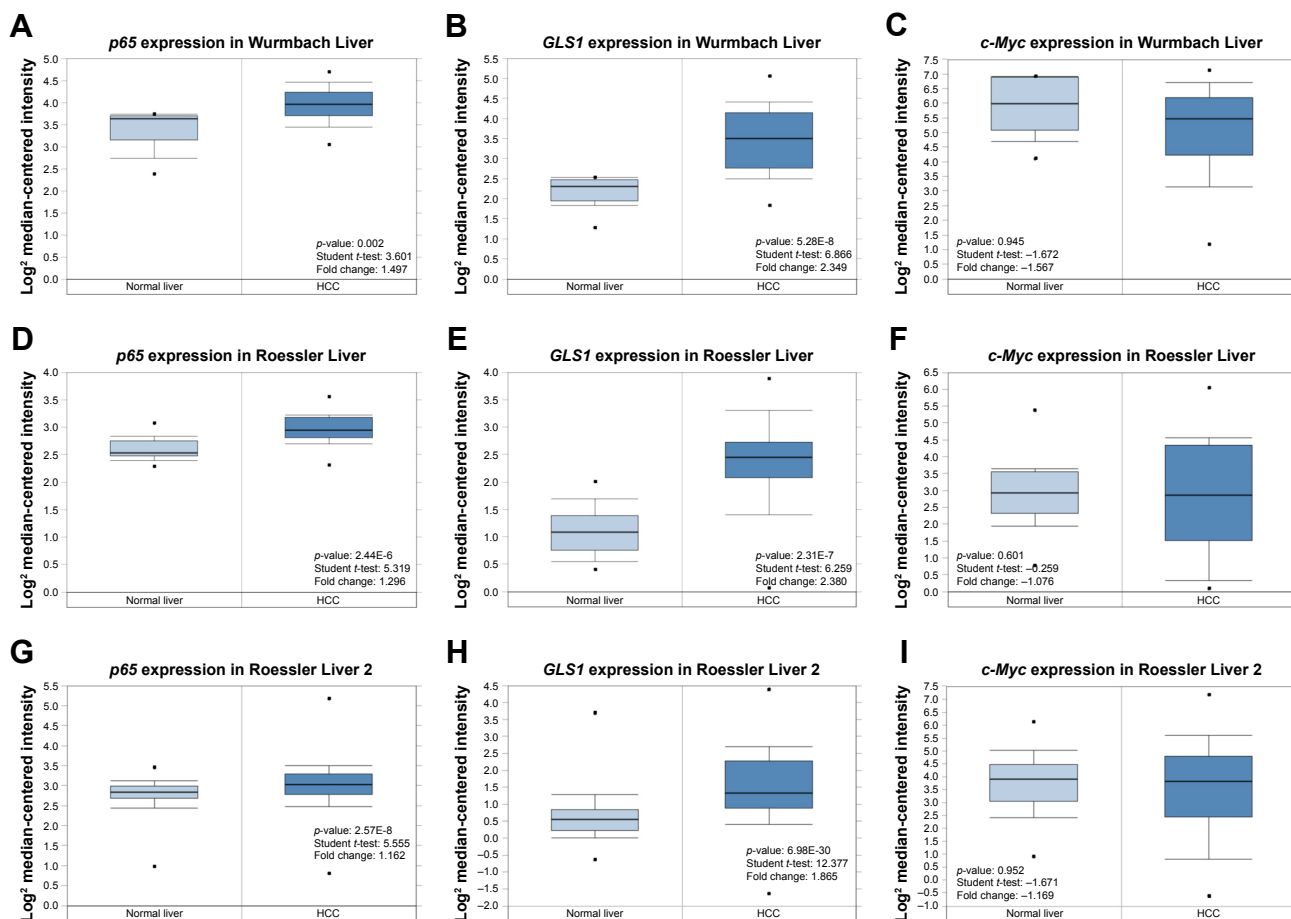


Figure 1 *c-Myc*, *p65*, and *GLS1* expression in HCC indicated by Oncomine analyses. (A) *p65* mRNA is upregulated in HCC samples compared to normal counterparts in the Wurmbach Liver data set. (B) *GLS1* mRNA is upregulated in HCC samples compared to normal counterparts in the Wurmbach Liver data set. (C) *c-Myc* mRNA expression in HCC samples compared to normal counterparts in the Wurmbach Liver data set. (D) *p65* mRNA is upregulated in HCC samples compared to normal counterparts in the Roessler Liver data set. (E) *GLS1* mRNA is upregulated in HCC samples compared to normal counterparts in the Roessler Liver data set. (F) *c-Myc* mRNA expression in HCC samples compared to normal counterparts in the Roessler Liver data set. (G) *p65* mRNA is upregulated in HCC samples compared to normal counterparts in the Roessler Liver 2 data set. (H) *GLS1* mRNA is upregulated in HCC samples compared to normal counterparts in the Roessler Liver 2 data set. (I) *c-Myc* mRNA expression in HCC samples compared to normal counterparts in the Roessler Liver 2 data set.

Abbreviations: *GLS1*, glutaminase 1; HCC, hepatocellular carcinoma.

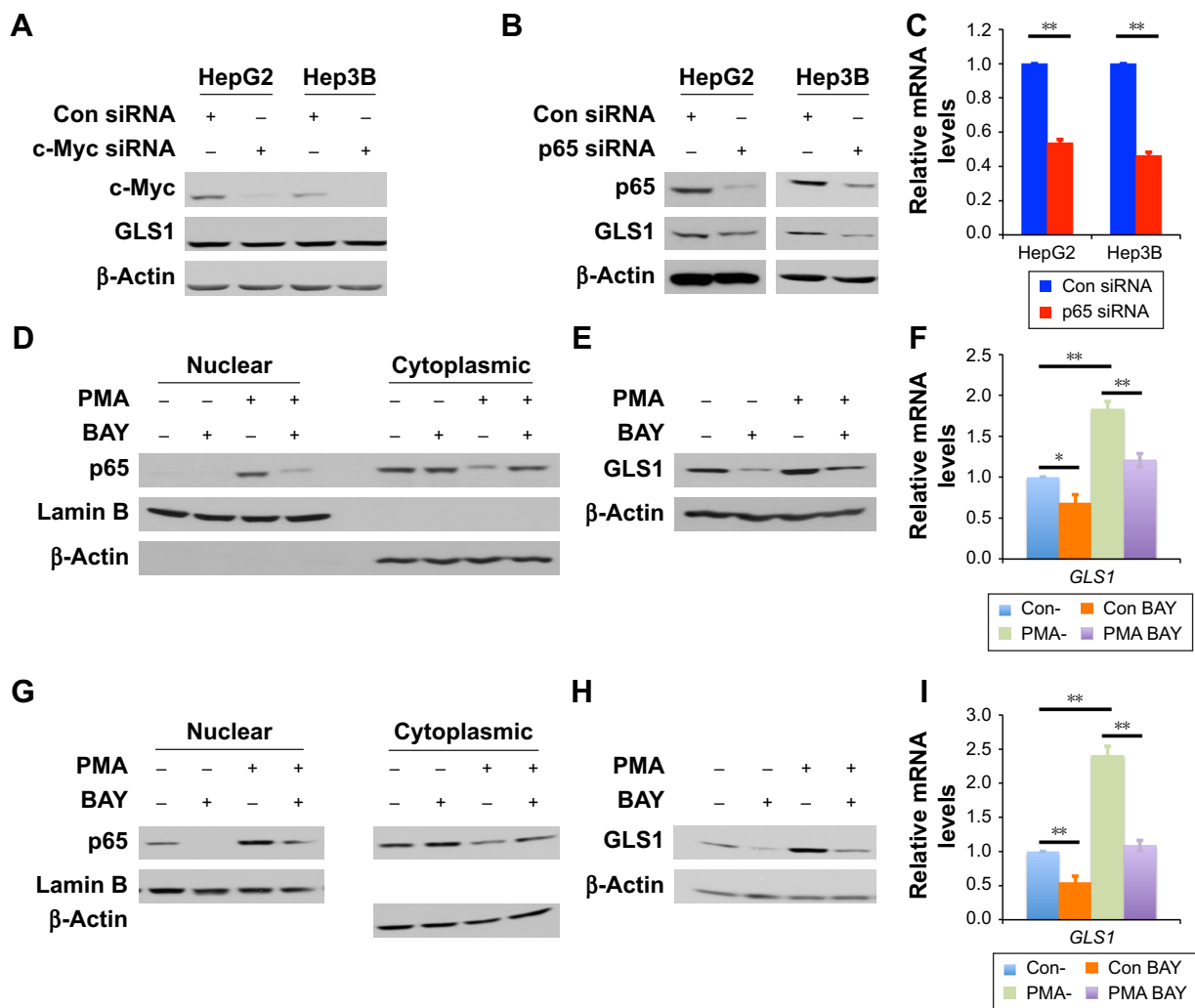


Figure 2 Knockdown or suppression of p65 reduces GLS1 expression in HCC cells. **(A)** Western blot shows the knockdown of *c-Myc* without interfering with GLS1 expression in HepG2 and Hep3B cells. **(B)** Western blot shows that *p65* knockdown reduces GLS1 protein levels in both HepG2 and Hep3B cells. **(C)** qRT-PCR indicates that *p65* knockdown reduces *GLS1* mRNA levels in both HepG2 and Hep3B cells. $**p < 0.01$. **(D, G)** Western blot indicates the activation of NF- κ B p65 upon indicated treatment in HepG2 **(D)** and Hep3B **(G)** cells, indicated by nuclear localization. **(E, H)** Western blot shows GLS1 protein alteration upon chemical treatment in HepG2 **(E)** and Hep3B **(H)** cells. **(F, I)** qRT-PCR indicates that *GLS1* mRNA is altered by activation or inactivation of NF- κ B p65 signaling in HepG2 **(F)** and Hep3B **(I)** cells. $*p < 0.05$, $**p < 0.01$. **Abbreviations:** GLS1, glutaminase I; HCC, hepatocellular carcinoma; qRT-PCR, quantitative real-time reverse transcription polymerase chain reaction; NF- κ B, nuclear factor- κ B; Con, control; PMA, phorbol 12-myristate 13-acetate; BAY, BAY 11-7082.

11-7082 reversed the induction (Figure 2F and I). Consistent with the changing of mRNA levels, GLS1 protein was also induced by PMA while BAY 11-7082 reversed the induction (Figure 2E and H).

GLS1 facilitates the proliferation of HCC cells

GLS1, the key enzyme to catalyze glutaminolysis, facilitates the production of ATP and building blocks for cell proliferation.³¹ The biological significance of GLS1 was studied by siRNA knockdown in HCC cells. Western blot showed the knockdown of GLS1 in HepG2 and Hep3B cells (Figure 3B and E). GLS1 knockdown suppressed cell proliferation in both cells (Figure 3A and D). To assess

whether this finding can be developed for clinical treatment, BPTES, a small molecular GLS1 inhibitor, was applied to HCC cells. Crystal violet assay demonstrated that BPTES successfully inhibited the cell proliferation in a dose-dependent manner (Figure 3C and F).

p65 regulates GLS1 expression in human tissues

To further test the importance of p65 in regulating GLS1, HCC tumor samples and their normal counterparts were collected for IHC staining. Haematoxylin & Eosin staining showed normal and HCC tissues (Figure 4A). IHC staining demonstrated higher p65 and GLS1 in tumor than in normal tissues (Figure 4B–D). cBioPortal data analysis indicated that

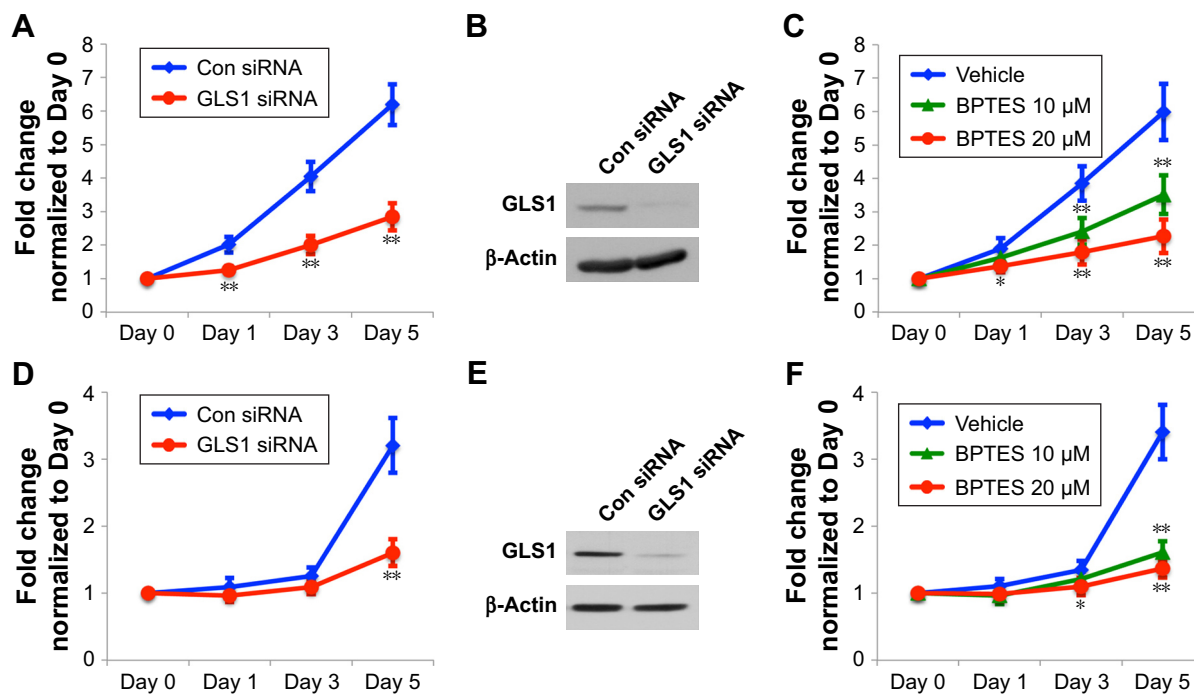


Figure 3 GLS1 promotes cell proliferation of HCC cells. (A–C) Cell proliferation of HepG2 cells. (A) Knockdown of *GLS1* reduces HepG2 cell proliferation. (B) Western blot indicates the knockdown of *GLS1* in HepG2 cells. (C) BPTES suppresses HepG2 cell proliferation. (D–F) Cell proliferation of Hep3B cells. (D) Knockdown of *GLS1* reduces Hep3B cell proliferation. (E) Western blot indicates the knockdown of *GLS1* in Hep3B cells. (F) BPTES suppresses Hep3B cell proliferation. * $p < 0.05$, ** $p < 0.01$. **Abbreviations:** GLS1, glutaminase 1; HCC, hepatocellular carcinoma; Con, control; BPTES, bis-2-(5-phenyl acetamido-1,3,4-thiadiazol-2-yl)ethyl sulfide.

GLS1 levels correlated with neoplasm histological grade of HCC patients (Figure 4E), suggesting that enhanced glutamine metabolism may promote the progression of HCC.

p65-GLS1 correlates with poor prognosis of HCC patients

To demonstrate the clinical significance of p65-GLS1 expression in human HCC patients, SurvExpression analyses were performed. Two independent human HCC TCGA data sets were chosen: “Liver-LIHC-TCGA-Liver hepatocellular carcinoma June 2016,” with 361 patients; and “Liver-TCGA-Liver-Cancer,” with 381 patients. Kaplan–Meier analyses found that the dysregulation of p65-GLS1 correlated with poor prognosis (Figure 5A–D), indicating the importance of this signaling pathway in controlling HCC patients’ outcomes.

Discussion

Dysregulated nutrient metabolism is a hallmark of tumorigenesis.⁴ The activation of tumor oncogenes and/or inactivation of tumor suppressors can not only promote tumor cell proliferation, but also enhance the nutrient metabolism, which provides energy, building blocks, and factors resisting stress conditions.³² The two most commonly dysregulated metabolic processes are the Warburg effect and glutaminolysis. The Warburg effect defines high aerobic glycolysis even in

the presence of oxygen, while glutaminolysis is a process in which glutamine is actively catabolized by GLS to favor tumorigenesis and tumor progression.³¹ Two isoforms of GLS have been identified: GLS1 and GLS2. Oncogenes, such as c-Myc,³³ epidermal growth factor receptor 2 (ErbB2),¹⁸ and epidermal growth factor (EGF),³⁴ promote glutaminolysis through upregulating or activating GLS1. On the other hand, increased GLS1 expression promotes tumor cells’ dependency on glutamine for survival.³⁵ Because of its role in regulating cell survival and proliferation, GLS1 is an ideal candidate to be developed as a therapeutic target.

Although its diagnosis and treatment have been improved, HCC remains one of the most lethal cancers and the patients’ prognosis remains poor owing to tumor invasion, metastasis, and recurrence. These conditions mean that there is an urgent need to look for novel therapeutic targets. The reprogramming of cancer metabolism has provided a new direction to solve this problem. In recent years, more and more studies have investigated the metabolic reprogramming of human HCC,⁵ among which glutamine metabolism has been extensively studied. Clinically, elevated GLS1 associates with poor prognosis of HCC, while there is still disagreement over the role of GLS2. In this study, GLS1 was chosen because of its importance in regulating cell proliferation. Our study demonstrated consistent results with previous reports: GLS1 is a prognostic factor for HCC;

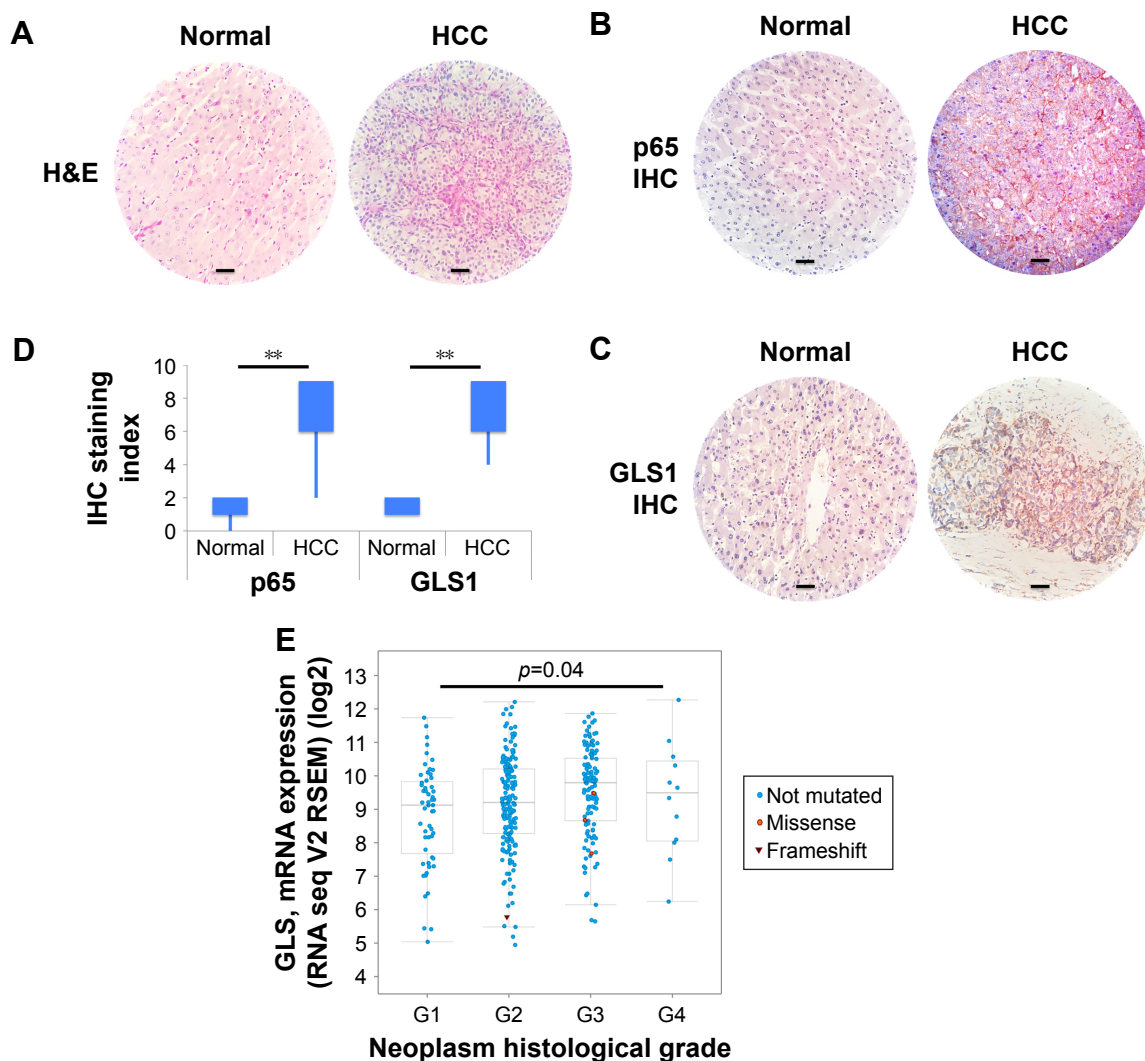


Figure 4 Correlation between p65 and GLS1 in human HCC samples. (A) H&E staining of normal and HCC tissues. Scale bar: 50 μ m. (B) IHC staining of p65 in normal and HCC tissues. Scale bar: 50 μ m. (C) IHC staining of GLS1 in normal and HCC tissues. Scale bar: 50 μ m. (D) Quantification of IHC staining index of p65 and GLS1 in normal and HCC tissues. $**p < 0.01$. (E) cBioPortal analysis indicating the correlation between GLS1 expression and neoplasm histological grade of HCC.

Abbreviations: GLS1, glutaminase I; HCC, hepatocellular carcinoma; IHC, immunohistochemistry; H&E, Haematoxylin & Eosin.

importantly, GLS1 shows a strong correlation with neoplasm histological grade.

Mechanistically, c-Myc is a well-known oncogene that controls GLS1 expression through downregulating microRNA, miR-23a/b.³³ In one study, human HCC samples were collected to compare both mRNA and protein levels of GLS1 and GLS2 in tumor and normal tissues.³⁶ *GLS1* mRNA was upregulated, while *GLS2* mRNA was downregulated in most tumors; moreover, IHC staining indicated high GLS1 expression while the changing of GLS2 protein levels was variable.³⁶ Although a clear increase in *c-Myc* mRNA levels was detected, its expression did not correlate with *GLS1* mRNA levels, indicating that a factor other than c-Myc controls GLS1 expression in HCC.³⁶ Our previous study demonstrated that ErbB2 can upregulate GLS1 via NF- κ B activation in human breast cancer cells.¹⁸ Oncomine

microarray data sets implicated that NF- κ B p65 and GLS1 co-overexpress in human HCC samples; moreover, knockdown of p65 further strengthens our hypothesis that the correlation between p65 and GLS1 is direct, and this regulation is through transcription. Treatment with chemical compounds also ascertained our proposed model. Although GLS1 is regulated by p65 in HCC cells, the detailed mechanism remains elusive. We and another group found that no NF- κ B binding sites exist in the GLS1 promoter region, while a mechanism depending on miR-23a was demonstrated.^{18,19} Further study is proposed to unveil the mechanism of GLS1 regulation in HCC cells.

Conclusion

Our study identified a novel signaling pathway, independent of c-Myc, that controls GLS1 upregulation in HCC through

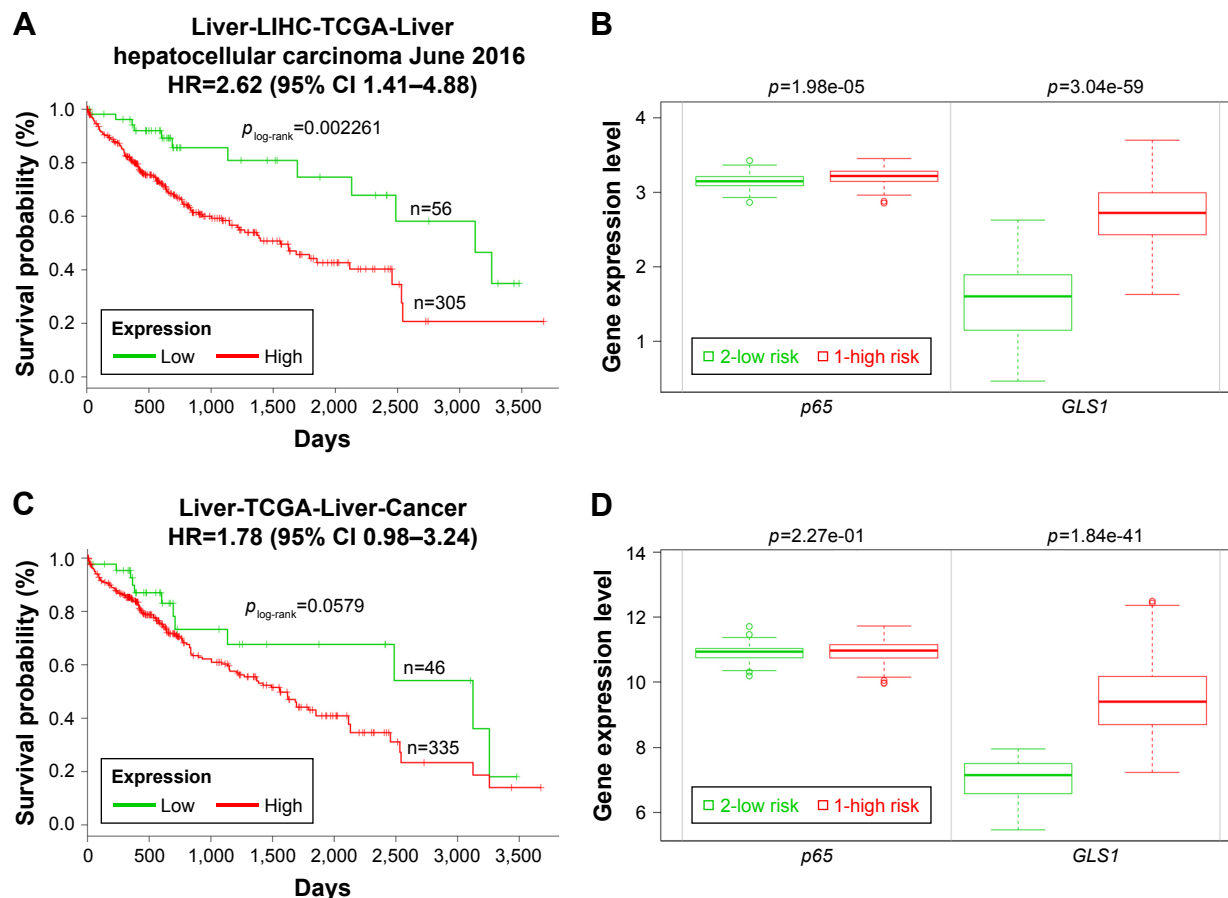


Figure 5 Dysregulation of p65-GLS1 expression correlates with poor prognosis in HCC patients. **(A)** Increased expression of p65-GLS1 correlates with poor prognosis in HCC patients in the Liver-LIHC-TCGA-Liver hepatocellular carcinoma June 2016 data set. **(B)** Gene expression levels of p65 and GLS1 in the HCC patients shown in **(A)**. **(C)** Increased expression of p65-GLS1 correlates with poor prognosis in HCC patients in the Liver-TCGA-Liver-Cancer data set. **(D)** Gene expression levels of p65 and GLS1 in the HCC patients shown in **(C)**.

Abbreviations: GLS1, glutaminase 1; HCC, hepatocellular carcinoma; LIHC, liver hepatocellular carcinoma; TCGA, The Cancer Genome Atlas; n, number included in the analyses; HR, hazard ratio; CI, confidence interval.

NF- κ B p65 activation. Elevated GLS1 promotes tumor cell proliferation and correlates with neoplasm histological grade; furthermore, SurvExpress analyses indicate that p65-GLS1 expression correlates with poor prognosis of HCC patients. Further studies are required to search for upstream factors that control GLS1 expression through the activation of NF- κ B p65.

Data sharing statement

The authors declare that all the data supporting the findings of this study are available within the article and from the corresponding author on reasonable request.

Acknowledgment

The authors thank the Department of Pathology in Cangzhou Hospital of Integrated TCM-WM, Hebei, for helping with the IHC staining.

Author contributions

SQ, MD, and LM designed and interpreted the experiments. MD, LM, FZ, SL, JH, RY, and SQ performed the experiments. SQ, MD, and LM wrote and edited the manuscript. All authors contributed toward data analysis, drafting and revising the paper and agree to be accountable for all aspects of the work.

Disclosure

The authors declare no conflict of interest in this work.

References

- Goh GB, Chang PE, Tan CK. Changing epidemiology of hepatocellular carcinoma in Asia. *Best Pract Res Clin Gastroenterol*. 2015;29(6): 919–928.
- Desai JR, Ochoa S, Prins PA, He AR. Systemic therapy for advanced hepatocellular carcinoma: an update. *J Gastrointest Oncol*. 2017;8(2): 243–255.

3. Qie S, Liang D, Yin C, et al. Glutamine depletion and glucose depletion trigger growth inhibition via distinctive gene expression reprogramming. *Cell Cycle*. 2012;11(19):3679–3690.
4. Hanahan D, Weinberg RA. Hallmarks of cancer: the next generation. *Cell*. 2011;144(5):646–674.
5. Shang RZ, Qu SB, Wang DS. Reprogramming of glucose metabolism in hepatocellular carcinoma: Progress and prospects. *World J Gastroenterol*. 2016;22(45):9933–9943.
6. Wang D, Meng G, Zheng M, et al. The Glutaminase-1 Inhibitor 968 Enhances Dihydroartemisinin-Mediated Antitumor Efficacy in Hepatocellular Carcinoma Cells. *PLoS One*. 2016;11(11):e0166423.
7. Altman BJ, Stine ZE, Dang CV. From Krebs to clinic: glutamine metabolism to cancer therapy. *Nat Rev Cancer*. 2016;16(10):619–634.
8. Zhang C, Liu J, Zhao Y, et al. Glutaminase 2 is a novel negative regulator of small GTPase Rac1 and mediates p53 function in suppressing metastasis. *Elife*. 2016;5:e10727.
9. Yu D, Shi X, Meng G, et al. Kidney-type glutaminase (GLS1) is a biomarker for pathologic diagnosis and prognosis of hepatocellular carcinoma. *Oncotarget*. 2015;6(10):7619–7631.
10. Liu J, Zhang C, Lin M, et al. Glutaminase 2 negatively regulates the PI3K/AKT signaling and shows tumor suppression activity in human hepatocellular carcinoma. *Oncotarget*. 2014;5(9):2635–2647.
11. Xu P, Oosterveer MH, Stein S, et al. LRH-1-dependent programming of mitochondrial glutamine processing drives liver cancer. *Genes Dev*. 2016;30(11):1255–1260.
12. Ge Y, Yan X, Jin Y, et al. MiRNA-192 [corrected] and miRNA-204 Directly Suppress lncRNA HOTTIP and Interrupt GLS1-Mediated Glutaminolysis in Hepatocellular Carcinoma. *PLoS Genet*. 2015;11(12):e1005726.
13. Jennis M, Kung CP, Basu S, et al. An African-specific polymorphism in the TP53 gene impairs p53 tumor suppressor function in a mouse model. *Genes Dev*. 2016;30(8):918–930.
14. Velázquez-Villegas LA, Charabati T, Contreras AV, Alemán G, Torres N, Tovar AR. PPAR α Downregulates Hepatic Glutaminase Expression in Mice Fed Diets with Different Protein:Carbohydrate Ratios. *J Nutr*. 2016;146(9):1634–1640.
15. Park MH, Hong JT. Roles of NF- κ B in Cancer and Inflammatory Diseases and Their Therapeutic Approaches. *Cells*. 2016;5(2):pii:E15.
16. Pires BR, Mencalha AL, Ferreira GM, et al. NF- κ B Is Involved in the Regulation of EMT Genes in Breast Cancer Cells. *PLoS One*. 2017;12(1):e0169622.
17. Shinoda K, Kuboki S, Shimizu H, et al. Pin1 facilitates NF- κ B activation and promotes tumour progression in human hepatocellular carcinoma. *Br J Cancer*. 2015;113(9):1323–1331.
18. Qie S, Chu C, Li W, Wang C, Sang N. ErbB2 activation upregulates glutaminase 1 expression which promotes breast cancer cell proliferation. *J Cell Biochem*. 2014;115(3):498–509.
19. Rathore MG, Saumet A, Rossi JF, et al. The NF- κ B member p65 controls glutamine metabolism through miR-23a. *Int J Biochem Cell Biol*. 2012;44(9):1448–1456.
20. Wang JB, Erickson JW, Fuji R, et al. Targeting mitochondrial glutaminase activity inhibits oncogenic transformation. *Cancer Cell*. 2010;18(3):207–219.
21. Rhodes DR, Yu J, Shanker K, et al. ONCOMINE: a cancer microarray database and integrated data-mining platform. *Neoplasia*. 2004;6(1):1–6.
22. OncoPrint™ [www.oncoPrint.org]. Massachusetts: Thermo Fisher Scientific Inc. Available from: www.oncoPrint.org. Accessed April 11, 2018.
23. cBioPortal for Cancer Genomics [www.cbioportal.org]. New York: Memorial Sloan Kettering Cancer Center; Version 1.13.3-SNAPSHOT. Available from: www.cbioportal.org. Accessed April 11, 2018.
24. Cancer Genome Atlas Network. Comprehensive molecular portraits of human breast tumours. *Nature*. 2012;490(7418):61–70.
25. Gao J, Aksoy BA, Dogrusoz U, et al. Integrative analysis of complex cancer genomics and clinical profiles using the cBioPortal. *Sci Signal*. 2013;6(269):p11.
26. Cerami E, Gao J, Dogrusoz U, et al. The cBio cancer genomics portal: an open platform for exploring multidimensional cancer genomics data. *Cancer Discov*. 2012;2(5):401–404.
27. Sun B, Qie S, Zhang S, et al. Role and mechanism of vasculogenic mimicry in gastrointestinal stromal tumors. *Hum Pathol*. 2008;39(3):444–451.
28. Qie S, Majumder M, Mackiewicz K, et al. Fbxo4-mediated degradation of Fxr1 suppresses tumorigenesis in head and neck squamous cell carcinoma. *Nat Commun*. 2017;8(1):1534.
29. Aguirre-Gamboa R, Gomez-Rueda H, Martinez-Ledesma E, et al. SurvExpress: an online biomarker validation tool and database for cancer gene expression data using survival analysis. *PLoS One*. 2013;8(9):e74250.
30. SurvExpress Biomarker validation for cancer gene expression [http://bioinformatica.mty.itesm.mx:8080/Biomatec/SurvivaX.jsp]. Monterrey, Nuevo León, México: Cátedra de Bioinformática, Tecnológico de Monterrey. Available from: http://bioinformatica.mty.itesm.mx:8080/Biomatec/SurvivaX.jsp. Accessed April 12, 2018.
31. Yin C, Qie S, Sang N. Carbon source metabolism and its regulation in cancer cells. *Crit Rev Eukaryot Gene Expr*. 2012;22(1):17–35.
32. Pavlova NN, Thompson CB. The Emerging Hallmarks of Cancer Metabolism. *Cell Metab*. 2016;23(1):27–47.
33. Gao P, Tchernyshyov I, Chang TC, et al. c-Myc suppression of miR-23a/b enhances mitochondrial glutaminase expression and glutamine metabolism. *Nature*. 2009;458(7239):762–765.
34. Thangavelu K, Pan CQ, Karlberg T, et al. Structural basis for the allosteric inhibitory mechanism of human kidney-type glutaminase (KGA) and its regulation by Raf-Mek-Erk signaling in cancer cell metabolism. *Proc Natl Acad Sci U S A*. 2012;109(20):7705–7710.
35. Yuneva M, Zamboni N, Oefner P, Sachidanandam R, Lazebnik Y. Deficiency in glutamine but not glucose induces MYC-dependent apoptosis in human cells. *J Cell Biol*. 2007;178(1):93–105.
36. Xiang Y, Stine ZE, Xia J, et al. Targeted inhibition of tumor-specific glutaminase diminishes cell-autonomous tumorigenesis. *J Clin Invest*. 2015;125(6):2293–2306.

OncoTargets and Therapy

Publish your work in this journal

OncoTargets and Therapy is an international, peer-reviewed, open access journal focusing on the pathological basis of all cancers, potential targets for therapy and treatment protocols employed to improve the management of cancer patients. The journal also focuses on the impact of management programs and new therapeutic agents and protocols on

Submit your manuscript here: <http://www.dovepress.com/oncotargets-and-therapy-journal>

Dovepress

patient perspectives such as quality of life, adherence and satisfaction. The manuscript management system is completely online and includes a very quick and fair peer-review system, which is all easy to use. Visit <http://www.dovepress.com/testimonials.php> to read real quotes from published authors.