

RESEARCH ARTICLE

Open Access

Elevated levels of serum amyloid A indicate poor prognosis in patients with esophageal squamous cell carcinoma

Jun-ye Wang^{1,2}, Yu-Zhen Zheng^{1,2}, Juan Yang³, Yue-Hao Lin^{1,4}, Shu-Qin Dai^{1,4}, Ge Zhang^{5*} and Wan-Li Liu^{1,4*}

Abstract

Background: Increase of Serum amyloid A (SAA) level has been observed in patients with a variety of cancers. The objective of this study was to determine whether SAA level could be used as a prognostic parameter in patients with esophageal squamous cell carcinoma (ESCC).

Methods: SAA levels were measured by rate nephelometry immunoassay in 167 healthy controls and 167 ESCC patients prior to surgical resection. Statistical associations between clinicopathological observations and SAA levels were determined using the Mann–Whitney U test. The clinical value of SAA level as a prognostic parameter was evaluated using the Cox's proportional hazards model.

Results: SAA levels were significantly higher in patients with ESCC compared to levels in healthy controls (13.88 ± 15.19 mg/L vs. 2.26 ± 1.66 mg/L, $P < 0.001$). Elevation of SAA levels (≥ 8.0 mg/L) was observed in 54.5% (91/167) of patients with ESCC but not in healthy controls. SAA levels were associated with tumor size ($P < 0.001$), histological differentiation ($P = 0.015$), T classification ($P < 0.001$), clinical stage ($P < 0.001$), lymph node metastasis ($P < 0.001$) and distant metastasis ($P < 0.001$), but not with the age and gender of the patients or tumor location. Multivariate analysis revealed that patients with an elevated level of SAA (≥ 8.0 mg/L) had significantly lower 5-year survival rate than those with non-elevated SAA (< 8.0 mg/L, log-rank $P < 0.0001$).

Conclusions: An elevated level of preoperative SAA was found to associate with tumor progression and poor survival in patients with ESCC.

Keywords: Serum amyloid A, Esophageal squamous cell carcinoma, Prognosis, Biomark

Background

Chronic inflammation has been recognized as a key factor that contributes to the development and progression of a wide range of malignancies [1]. A number of studies suggest that inflammatory status is a prognostic factor for many cancers [2-4]. Serum amyloid A (SAA), an acute phase reactant, is a high-density lipoprotein-associated lipoprotein. It is well-known as a modulator of inflammation and it plays a major role in the

metabolism and transport of cholesterol [5]. Levels of SAA may rapidly increase by up to 1000-fold in response to acute inflammation, and it is a well-established indicator of inflammation in the body [6]. SAA is also used to assess low-grade chronic inflammation.

SAA has been investigated in various human malignancies as a predictor of cancer risk and as a prognostic parameter [7-9]. Interestingly, SAA has been recently identified by serum proteomic technologies as a potentially useful biomarker for human tumors, including renal cell carcinoma [10], lung cancer [11], melanoma [12], endometrial cancer [13] and nasopharyngeal cancer [14]. Elevated levels of SAA have been used as a non-invasive biomarker for prognosis of many cancers, such as breast cancer [15], lung cancer [16], melanoma [12], gastric cancer [17] and endometrial cancer [13].

* Correspondence: zhangge@mail.sysu.edu.cn; liuwl@susucc.org.cn

⁴Department of Clinical Laboratory Medicine, Sun Yat-sen University cancer center, 651 Dongfeng Road East, Guangzhou 510060, China

⁵Department of Microbial and Biochemical Pharmacy, School of Pharmaceutical Sciences, Sun Yat-sen University, No.132 Waihuandong Road, University Town, Guangzhou 510006, China

Full list of author information is available at the end of the article

A previous study in sera from patients with esophageal squamous cell carcinoma (ESCC) that used mass spectrometry and proteomic technologies found that SAA was upregulated and could be used to differentiate patients from healthy individuals [18]. ESCC, the major histopathological form of esophageal cancer, is one of the most lethal malignancies of the digestive tract and is the fourth most frequent cause of cancer deaths in China [19]. Inflammatory status has been reported to be a prognostic factor for ESCC. Elevated concentrations of serum C-reactive protein (CRP), another commonly used marker of inflammation, have been shown to be associated with disease progression and poor prognosis in patients with ESCC [20-22]. However, the relationship between SAA and ESCC progression is still unclear.

In this study, we measured the preoperative SAA levels in 167 patients with ESCC to evaluate the clinical value of SAA as a prognostic parameter in those patients.

Methods

Patients and sera

In this study, patients with elevated white blood cell count ($>10 \times 10^9/L$) were considered with inflammatory diseases and were excluded before the measurement of SAA. At last, 167 patients with primary ESCC treated between January 2005 and January 2007 in the Cancer Center of Sun Yat-Sen University were enrolled and considered as the case group. In the cohort, 129 patients were male and 38 patients were female. There were 2 cases with atherosclerotic disease and 6 cases with COPD in group with serum SAA levels ≥ 8.0 mg/L; there were 3 cases with atherosclerotic disease and 4 cases with COPD in group with serum SAA levels < 8.0 mg/L. The patients ranged in age from 38 to 81 years (mean, 58.5 years); none had received radiotherapy or chemotherapy prior to surgery. The patient characteristics are described in Table 1. Surgical resection in this cohort of patients consisted of transthoracic en bloc esophagectomy with two- or three-field lymphadenectomy. All of the patients were classified according to the TNM classification system and resected specimens underwent pathological examination [23]. A total of 123 patients with ESCC underwent surgical resection only, 44 patients received additional platinum-based adjuvant chemotherapy and/or radiotherapy at the discretion of the surgeon and/or oncologist.

Overall survival (OS) was defined as the interval between the date of surgery and the date of death or the date of the last known follow-up visit. Two patients died of causes unrelated to ESCC. The follow-up data from the ESCC patients in this study were available and complete.

Sera from 167 healthy volunteers (129 males, 38 females) with ages ranging from 40 to 70 years (mean: 57.8 years) were collected in physical examination, there

were 1 case with atherosclerotic disease and 2 cases with COPD. Healthy controls were selected from an archive of blood samples; the control samples were matched as closely as possible to the ESCC group for sex, previous handling and the time period of sample collection.

A 5-ml blood sample from each participant (ESCC patients and health controls) was allowed to clot for 30 to 60 min at room temperature. Each clotted samples was centrifuged at 1,500 g for 10 min. All sera were aliquoted and frozen at -70°C until use. This study was approved by the Institute Research Ethics Committee of the Cancer Center of Sun Yat-Sen University and informed consents were obtained from all participants before their sera were used.

Immunoassay of SAA

The concentration of SAA was determined in both the ESCC sera and the healthy control sera using rate nephelometry performed on a BN ProSpec System (Siemens, Germany) with an SAA assay kit based on a polyclonal antibody (Siemens Healthcare Diagnostics Products GmbH, Germany). The normal level for SAA in the healthy Chinese population is < 8.0 mg/L according to the kit's protocol.

Statistical analysis

All statistical analyses were carried out using the SPSS 16.0 statistical software package (SPSS Inc., Chicago, IL). The Mann-Whitney U test was used to evaluate the difference in SAA concentrations between ESCC patients and healthy controls and to analyze the association between SAA levels and the observed clinicopathological characteristics of patients with ESCC. Pearson's chi-squared test was used to analyze the relationship between SAA levels and gender. Survival curves were plotted by the Kaplan-Meier method and compared using the log rank test. The significance of various variables for survival was analyzed using the Cox proportional hazards model (univariate and multivariate analysis). $P < 0.05$ was considered to be statistically significant in all cases.

Results

Figure 1 shows the level of SAA in the healthy controls ($n = 167$) and ESCC patients ($n = 167$), respectively. The mean SAA levels in the healthy controls and ESCC patients prior to surgery were 2.26 mg/L (SD, 1.66; range, 0.10-6.50) and 13.88 mg/L (SD, 15.19; range, 0.76-76.1), respectively. SAA values from ESCC patients were significantly higher than those from the healthy controls ($P < 0.001$).

Extremely high levels of SAA were found only in the patient group. The maximum concentration of SAA that was regarded as normal was set at 8.0 mg/L, as specified

Table 1 Relationship between the SAA concentration and the clinicopathological variables in 167 patients with esophageal carcinoma

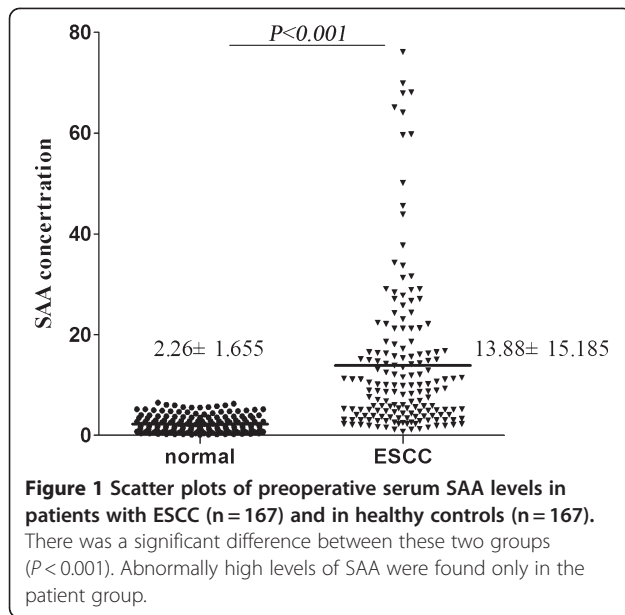
Variables	Cases (n)	SAA(mg/L) (Mean±SD)	Significance (P)*	SAA <8.0 mg/L	SAA ≥8.0 mg/L	Significance (P)*
Gender						
Male	129	14.89±15.72	0.084	54	75	0.126
Female	38	10.62±13.01		21	17	
Age (y)						
<60	83	12.57±13.58	0.083	43	40	0.086
≥60	84	15.41±16.74		32	52	
Location						
Up	49	15.32±17.36	0.381	23	26	0.361
Middle	88	12.61±14.51		43	45	
Low	30	15.80±13.81		10	20	
Tumor diameter						
<50 mm	102	8.02±9.30	<0.001	66	36	<0.001
≥50 mm	65	23.15±17.93		10	55	
Histological differentiation						
Well	53	5.91±3.59	0.015	35	18	<0.001
Moderate	73	16.76±8.88		27	46	
Poor	21	17.42±17.22		4	17	
pT classification						
T1	11	5.06±4.79	<0.001	7	4	<0.001
T2	23	7.17±6.81		16	7	
T3	93	12.96±13.59		42	51	
T4	40	22.08±20.02		6	34	
pN classification						
No	72	9.99±12.88	0.006	43	29	<0.001
Yes	95	17.03±16.38		29	66	
pMetastasis						
No	132	10.21±10.97	<0.001	68	64	<0.001
Yes	35	27.92±20.42		4	31	
Stage						
I	17	5.82±4.81	<0.001	13	4	<0.001
IIa	25	6.90±13.76		16	9	
IIb	25	8.82±7.88		15	10	
III	61	11.68±9.60		26	35	
IV	39	27.73±20.58		3	36	

by the SAA assay kit. Elevation of the SAA levels at or above this value (≥ 8.0 mg/L) were observed in 54.5% (91/167) of patients with ESCC, however, none of the 167 healthy controls had serum SAA levels above 8.0 mg/L.

The associations between median serum SAA levels and clinicopathological parameters are presented in Table 1. SAA levels were not associated with age, gender and tumor location; however, elevated median SAA levels were significant for patients with larger tumors (\geq

50 mm; $P < 0.001$) and for those with more advanced disease, including lymph node metastasis ($P = 0.006$) and distant metastasis ($P < 0.001$). There was also an association between raised SAA levels and poorly differentiated tumors ($P = 0.015$). We also noted that the median levels of SAA significantly increased with increasing T classification ($P < 0.001$) and clinical stage ($P < 0.001$) of the malignancy.

Next, patients were classified into two groups according to their SAA level (< 8.0 mg/L vs. ≥ 8.0 mg/L); the

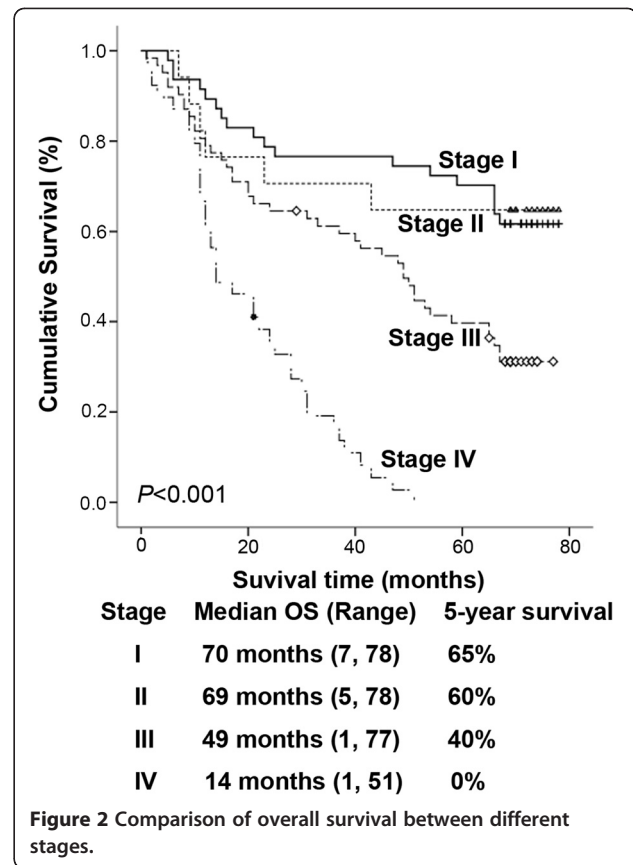


relationships between SAA levels and clinicopathological parameters were assessed. No significant difference in age, gender and tumor location was found between the two groups; however, patients with poor histological differentiation ($P < 0.001$), larger tumor size ($P < 0.001$), higher T classification ($P < 0.001$), lymph node metastasis ($P < 0.001$), distant metastasis ($P < 0.001$) and higher clinical stage ($P < 0.001$) were more frequently observed in the elevated SAA group ($SAA \geq 8.0$ mg/L) than in the non-elevated SAA group ($SAA < 8.0$ mg/L).

The overall survival of patients with ESCC was plotted using the Kaplan-Meier method and a log-rank test was employed to evaluate the prognostic significance of SAA levels. Of the entire cohort, the predicted five-year overall survival rate was 41%, with a median survival time of 45.0 months (range from 1 month to 78 months). Figure 2 shows the comparison of survival time between different stages.

The group with non-elevated SAA levels (< 8.0 mg/L) showed a significantly better 5-year survival rate than the elevated SAA group (≥ 8.0 mg/L; Figure 3a). The cumulative 5-year survival rate in the non-elevated SAA group was 64.1%, whereas it was only 13.2% in the elevated SAA group (log-rank $P < 0.0001$).

We also analyzed the prognostic value of SAA levels in selective patient subgroups stratified according to the disease stage, and T and N classifications, respectively. ESCC patients with elevated SAA levels had significantly shorter overall survival rate compared to patients with non-elevated SAA levels in the clinical stage I-II subgroup (n = 64; log-rank $P < 0.0001$; Figure 3b), the clinical stage III-IV subgroup (n = 101; log-rank $P < 0.0001$; Figure 3c), the T1-T2 subgroup (n = 34; log rank



$P = 0.016$; Figure 3d), the T3-T4 subgroup (n = 131; log rank, $P < 0.0001$; Figure 3e), the N0 subgroup (n = 72; log rank, $P < 0.0001$; Figure 3f) and the N1 subgroup (n = 93; log-rank, $P < 0.0001$; Figure 3g).

Results of univariate Kaplan-Meier analysis and the multivariate Cox regression model with respect to overall survival rate are shown in Table 2. Clinical stage, N classification and SAA levels are significantly correlated with survival in univariate Kaplan-Meier analysis (log rank test $P < 0.001$) respectively. To determine whether SAA levels could be used as an independent prognostic factor for outcomes we performed a multivariate analysis for survival, based on SAA levels, age, clinical stage, N classification and gender. In this analysis, clinical stage (log rank test $P = 0.047$), N classification (log rank test $P < 0.001$) and SAA levels (log rank test $P < 0.001$) were recognized as independent prognostic factors (Table 2). Thus, our findings indicate that the preoperative serum SAA level is an independent prognostic factor for esophageal squamous cell carcinoma.

Discussion

Inflammation appears to play an important role in esophageal carcinogenesis [24]. Mechanisms of inflammation-associated tumor development have been well studied

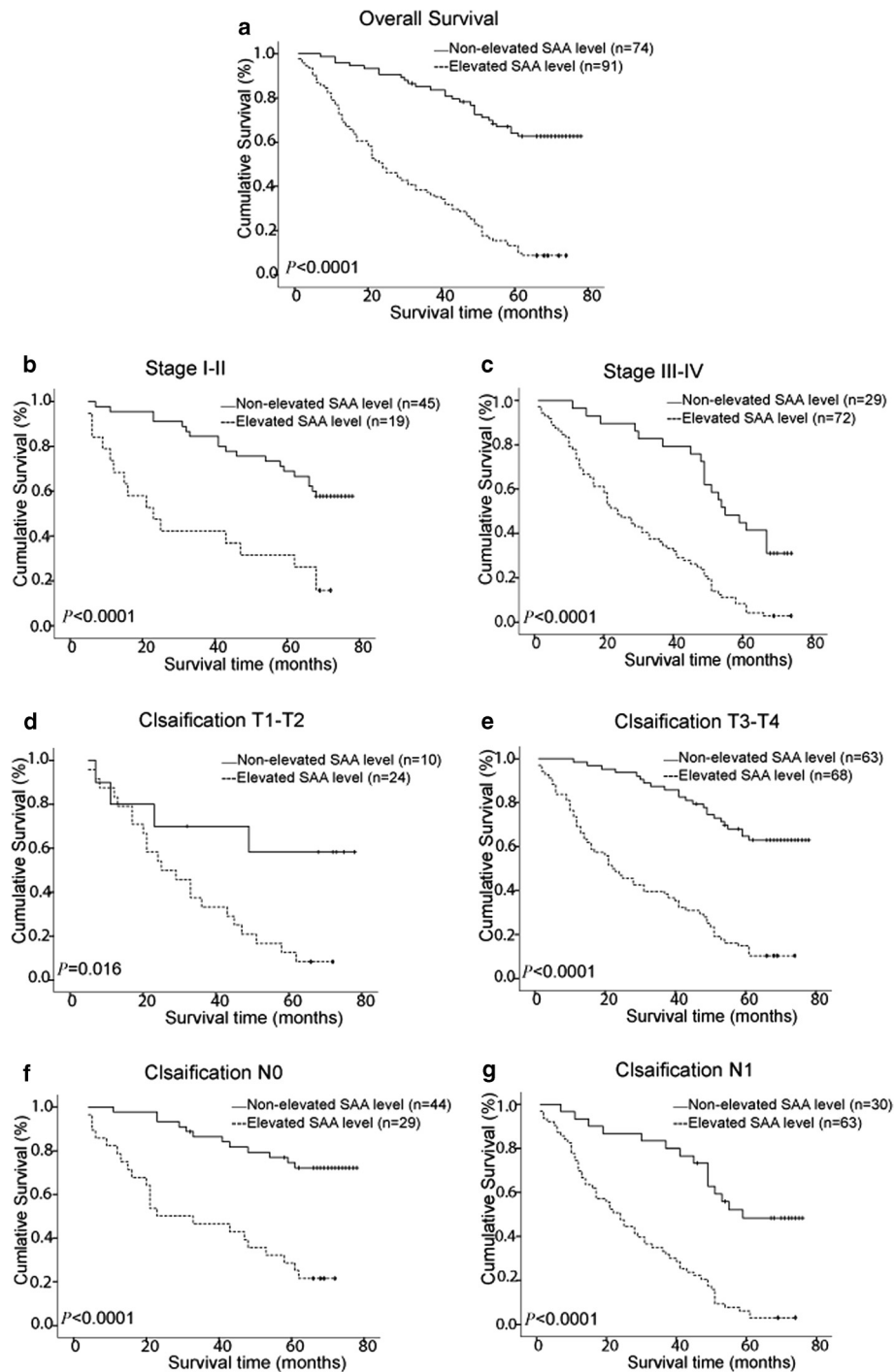


Figure 3 Overall survival curves for patients with ESCC after curative resection. The patients were categorized with elevated (≥ 8.0 mg/L) or non-elevated (< 8.0 mg/L) levels of SAA. The P -values were determined using the log rank test. all patients (a); clinical stage I-II subgroup (b); clinical stage III-IV subgroup (c); T1-T2 subgroup (d); T3-T4 subgroup (e); N0 subgroup (f); N1 subgroup (g).

[25]. Key players in the inflammatory cascade include cytokines and inflammatory enzymes.

SAA, a well-established indicator of inflammation, is a nonspecific, acute-phase, hepatic protein secreted in response to cytokines such as interleukin-1, interleukin-6

and tumor necrosis factor α [26]. SAA participates in cholesterol transport, extracellular matrix degradation and the recruitment of inflammatory cells [5]. Accumulating evidence has suggested that SAA might be used in the clinic to detect a pattern of physiological events that

Table 2 Univariate and multivariate survival analysis in patients with esophageal carcinoma

Characteristic	Univariate analysis			Multivariate analysis		
	HR	95% CI	P value*	HR	95% CI	P value*
Age, years						
< 60 vs. ≥60	1.242	0.847-1.823	0.267	1.254	0.835-1.789	0.302
Gender						
Male vs. Female	0.822	0.510-1.327	0.423	0.568	0.316-0.863	0.093
pN metastasis						
Yes vs. No	1.923	1.112-2.545	<0.001	1.897	1.237-2.675	0.001
pTNM stage						
I-II vs. III-IV	3.3500	2.112-5.315	<0.001	1.636	1.005-2.661	0.047
SAA level						
<8.0 mg/L vs. ≥8.0 mg/L	12.217	7.162-20.842	<0.001	6.762	2.941-15.548	<0.001

Abbreviations: HR, Hazard ratio; 95% CI, 95% confidence interval; * Cox hazard regression modal.

could indicate the growth of a malignancy and/or a host response [7]. Elevated SAA levels have been observed in patients with renal cancer [10], melanoma [12], endometrial cancer [13], nasopharyngeal carcinoma [14], lung cancer [16], gastric cancer [17], colorectal cancer [27] and breast cancer [15]. A previous study using mass spectroscopy found that serum SAA levels increased significantly in postoperative ESCC patients compared with preoperative patients and healthy subjects [18]. However, this study did not determine whether the elevated levels of SAA were related to ESCC or the trauma of surgery.

In this study, we first showed that about 6.1-fold higher levels of SAA in ESCC patients' preoperative sera compared to healthy controls (13.88 mg/L ± 15.19 mg/L vs. 2.26 mg/L ± 1.66 mg/L). We have demonstrated that the preoperative serum SAA level may be an independent and important prognostic indicator in patients with ESCC following curative esophageal resection. The SAA concentration correlated significantly with unfavorable clinicopathological factors such as tumor size, T stage, clinical stage, lymph node metastasis and distant metastasis.

In present study, we have obtained similar prognosis compared with previous studies [28,29]. However, the survival curve was indiscriminate between stage I and II ($P = 0.976$), this may be contributed to the small sample size and, most patients of stage II were nodal negative.

The overall survival rate among patients with elevated SAA (≥ 8.0 mg/L) was significantly lower compared with the rate in the group of patients with non-elevated SAA levels (< 8.0 mg/L). Patients with elevated SAA levels had shorter survival durations compared to those with non-elevated SAA levels. The current data are consistent with previous studies that support the use of SAA as an independent prognostic marker in renal cancer [10], melanoma [12] and lung cancer [16].

It has been reported that SAA is produced by the liver and enters the systemic circulation in response

to stimulation by inflammatory cytokines, such as interleukin-6 (IL-6). IL-6 is a potent proinflammatory cytokine and is produced at local tissue sites. It stimulates the liver to produce acute phase proteins, including SAA [26]. Elevated serum levels of IL-6 have been shown to be correlated with disease progression and poor prognosis in patients with esophageal cancer [30]. It has also been observed that IL-6 expression is elevated (increases in both mRNA and protein concentrations) in esophageal tumor tissues; serum levels of IL-6 have also been correlated with tumor volume. In present study, our data show that gradual elevation of serum SAA levels are associated with increasing T classification, increasing clinical stage as well as disease progression. Based upon these results, we speculate that the rise in SAA may be caused by excess inflammatory cytokines, in particular IL-6, which has previously been shown to be produced by the large number of cancer cells in patients with advanced esophageal carcinoma [31].

On the other hand, elevated SAA levels may also be a primary product of tumors. Highly expressed SAA has been observed in lung cancer tissues and in vitro experiments have shown that the SAA protein can be induced in lung cancer cells by their interaction with THP-1 monocytes [11]. The secretion of SAA by tumor cells has also been measured in renal cancer [10], endometrial carcinoma [13], colorectal cancer [27] and ovarian carcinoma [32]. However, it remains unknown whether esophageal tumor cells express SAA; further investigations are needed to determine whether ESCC tumor tissue-derived cytokines stimulate SAA synthesis in esophageal epithelial cells and thus contribute to elevated circulating SAA levels.

The functions of the SAA protein, described in the context as inflammation, are compatible with the mechanism of tumor invasion and metastasis. A previous study in animal models has demonstrated that the

overexpression of SAA promoted Lewis lung carcinoma (LLC) cells to metastasize and colonize in the lung [11]. It was found that SAA bound to extracellular matrix components with results of subsequent potential modification of cell binding, enhancement of plasminogen activation, stimulation of matrix metalloproteinase (MMP) production, and increase of the invasive potential of tumor cells [33]. It was also reported that SAA stimulated M-CSF and MCP-1 expression in hepatocellular carcinoma cells; and these factors skewed M1 tumor-associated macrophages into M2 tumor-associated macrophages, which exacerbated HCC invasion both in vitro and in vivo [34]. Additionally, SAA-1 could induce anti-inflammatory interleukin-10 (IL-10)-secreting neutrophils, which have been linked to the consequent promotion of melanoma progression [35]. All these known effects of SAA in tumor invasion and metastasis may explain our findings that significantly higher concentrations of SAA were observed in patients with lymph node or distant metastatic disease, and patients with an elevated level of SAA (≥ 8.0 mg/L) had significantly lower 5-year survival rate than those with non-elevated SAA (< 8.0 mg/L).

Conclusion

In conclusion, our study revealed that an elevated level of preoperative serum SAA was significantly associated with progressive disease and reduced survival durations in patients with ESCC. This finding might serve as the basis to explain the poor progression of patients who have undergone ESCC resection. The measurement of SAA is simple, cheap and well-established in clinical chemistry laboratories. This immunoassay could provide a relatively inexpensive and objective clinical prognostic tool for the assessment of ESCC progression.

Abbreviations

SAA: serum amyloid A; ESCC: esophageal squamous cell carcinoma; CRP: C-reactive protein; OS: overall survival; SD: standard deviation; IL: interleukin; LLC: Lewis lung carcinoma; COPD: chronic obstructive pulmonary disease; MMP: matrix metalloproteinase; M-CSF: macrophage colony stimulating factor; MCP: monocyte chemoattractant protein; HCC: hepatocellular carcinoma.

Competing interests

The authors declare that they have no competing interests.

Authors' contributions

J-YW drafted the manuscript. Y-ZZ and J-Y performed statistical analysis. G-Z and W-LL participated in the study design and coordination. S-QD collected serum specimen. Y-HL performed the follow-up. All the authors have read and approved the final manuscript.

Acknowledgements

This work was supported by National Natural Science Foundation of China (No. 30972762; No.81072670).

Author details

¹State Key Laboratory of Oncology in Southern China, Sun Yat-sen University Cancer Center, Guangzhou, China. ²Department of Thoracic Surgery, Sun Yat-

sen University cancer center, Guangzhou, China. ³Department of Clinical Laboratory Medicine, Guangzhou Medical University, Guangzhou, China. ⁴Department of Clinical Laboratory Medicine, Sun Yat-sen University cancer center, 651 Dongfeng Road East, Guangzhou 510060, China. ⁵Department of Microbial and Biochemical Pharmacy, School of Pharmaceutical Sciences, Sun Yat-sen University, No.132 Waihuandong Road, University Town, Guangzhou 510006, China.

Received: 15 April 2012 Accepted: 17 August 2012

Published: 23 August 2012

References

1. Coussens LM, Werb Z: Inflammation and cancer. *Nature* 2002, **420**:860–867.
2. McArdle PA, Mir K, Almushatat AS, Wallace AM, Underwood MA, McMillan DC: Systemic inflammatory response, prostate-specific antigen and survival in patients with metastatic prostate cancer. *Urol Int* 2006, **77**:127–129.
3. McMillan DC, Canna K, McArdle CS: Systemic inflammatory response predicts survival following curative resection of colorectal cancer. *Br J Surg* 2003, **90**:215–219.
4. Scott HR, McMillan DC, Forrest LM, Brown DJ, McArdle CS, Milroy R: The systemic inflammatory response, weight loss, performance status and survival in patients with inoperable non-small cell lung cancer. *Br J Cancer* 2002, **87**:264–267.
5. Yamada T: Serum amyloid A (SAA): a concise review of biology, assay methods and clinical usefulness. *Clin Chem Lab Med* 1999, **37**:381–388.
6. Malle E, De Beer FC: Human serum amyloid A (SAA) protein: a prominent acute-phase reactant for clinical practice. *Eur J Clin Invest* 1996, **26**:427–435.
7. Malle E, Sodin-Semrl S, Kovacevic A: Serum amyloid A: an acute-phase protein involved in tumour pathogenesis. *Cell Mol Life Sci* 2009, **66**:9–26.
8. Kimura M, Tomita Y, Imai T, Saito T, Katagiri A, Ohara-Mikami Y, Matsudo T, Takahashi K: Significance of serum amyloid A on the prognosis in patients with renal cell carcinoma. *Cancer* 2001, **92**:2072–2075.
9. Vermaat JS, van der Tweel I, Mehra N, Sleijfer S, Haanen JB, Roodhart JM, Engwegen JY, Korse CM, Langenberg MH, Kruit W, et al: Two-protein signature of novel serological markers apolipoprotein-A2 and serum amyloid alpha predicts prognosis in patients with metastatic renal cell cancer and improves the currently used prognostic survival models. *Ann Oncol* 2010, **21**:1472–1481.
10. Wood SL, Rogers M, Cairns DA, Paul A, Thompson D, Vasudev NS, Selby PJ, Banks RE: Association of serum amyloid A protein and peptide fragments with prognosis in renal cancer. *Br J Cancer* 2010, **103**:101–111.
11. Sung HJ, Ahn JM, Yoon YH, Rhim TY, Park CS, Park JY, Lee SY, Kim JW, Cho JY: Identification and validation of SAA as a potential lung cancer biomarker and its involvement in metastatic pathogenesis of lung cancer. *J Proteome Res* 2011, **10**:1383–1395.
12. Findeisen P, Zapotka M, Peccerella T, Matzk H, Neumaier M, Schadendorf D, Uguirel S: Serum amyloid A as a prognostic marker in melanoma identified by proteomic profiling. *J Clin Oncol* 2009, **27**:2199–2208.
13. Cocco E, Bellone S, El-Sahwi K, Cargnelutti M, Buza N, Tavassoli FA, Schwartz PE, Rutherford TJ, Pecorelli S, Santin AD: Serum amyloid A: a novel biomarker for endometrial cancer. *Cancer* 2010, **116**:843–851.
14. Cho WC, Yip TT, Yip C, Yip V, Thulasiraman V, Ngan RK, Lau WH, Au JS, Law SC, Cheng WW, et al: Identification of serum amyloid a protein as a potentially useful biomarker to monitor relapse of nasopharyngeal cancer by serum proteomic profiling. *Clin Cancer Res* 2004, **10**:43–52.
15. Pierce BL, Ballard-Barbash R, Bernstein L, Baumgartner RN, Neuhauser ML, Wener MH, Baumgartner KB, Gilliland FD, Sorensen BE, McTiernan A, et al: Elevated biomarkers of inflammation are associated with reduced survival among breast cancer patients. *J Clin Oncol* 2009, **27**:3437–3444.
16. Cho WC, Yip TT, Cheng WW, Au JS: Serum amyloid A is elevated in the serum of lung cancer patients with poor prognosis. *Br J Cancer* 2010, **102**:1731–1735.
17. Chan DC, Chen CJ, Chu HC, Chang WK, Yu JC, Chen YJ, Wen LL, Huang SC, Ku CH, Liu YC, et al: Evaluation of serum amyloid A as a biomarker for gastric cancer. *Ann Surg Oncol* 2007, **14**:84–93.
18. An JY, Fan ZM, Zhuang ZH, Qin YR, Gao SS, Li JL, Wang LD: Proteomic analysis of blood level of proteins before and after operation in patients with esophageal squamous cell carcinoma at high-incidence area in Henan Province. *World J Gastroenterol* 2004, **10**:3365–3368.
19. Enzinger PC, Mayer RJ: Esophageal cancer. *N Engl J Med* 2003, **349**:2241–2252.

20. Nozoe T, Saeki H, Sugimachi K: **Significance of preoperative elevation of serum C-reactive protein as an indicator of prognosis in esophageal carcinoma.** *Am J Surg* 2001, **182**:197–201.
21. Shimada H, Nabeya Y, Okazumi S, Matsubara H, Shiratori T, Aoki T, Sugaya M, Miyazawa Y, Hayashi H, Miyazaki S, et al: **Elevation of preoperative serum C-reactive protein level is related to poor prognosis in esophageal squamous cell carcinoma.** *J Surg Oncol* 2003, **83**:248–252.
22. Crumley AB, McMillan DC, McKernan M, Going JJ, Shearer CJ, Stuart RC: **An elevated C-reactive protein concentration, prior to surgery, predicts poor cancer-specific survival in patients undergoing resection for gastro-oesophageal cancer.** *Br J Cancer* 2006, **94**:1568–1571.
23. Fisseler-Eckhoff A: **New TNM classification of malignant lung tumors 2009 from a pathology perspective.** *Pathologe* 2009, **30**(Suppl 2):193–199.
24. Abdel-Latif MM, Duggan S, Reynolds JV, Kelleher D: **Inflammation and esophageal carcinogenesis.** *Curr Opin Pharmacol* 2009, **9**:396–404.
25. Hanahan D, Weinberg RA: **Hallmarks of cancer: the next generation.** *Cell* 2011, **144**:646–674.
26. Conti P, Bartle L, Barbacane RC, Reale M, Placido FC, Sipe J: **Synergistic activation of serum amyloid A (SAA) by IL-6 and IL-1 in combination on human Hep 3B hepatoma cell line. Role of PGE2 and IL-1 receptor antagonist.** *Immunol Invest* 1995, **24**:523–535.
27. Glojnaric I, Casl MT, Simic D, Lukac J: **Serum amyloid A protein (SAA) in colorectal carcinoma.** *Clin Chem Lab Med* 2001, **39**:129–133.
28. Lerut T, Naftoux P, Moons J, Coosemans W, Decker G, De Leyn P, Van Raemdonck D, Ectors N: **Three-field lymphadenectomy for carcinoma of the esophagus and gastroesophageal junction in 174 R0 resections: impact on staging, disease-free survival, and outcome: a plea for adaptation of TNM classification in upper-half esophageal carcinoma.** *Ann Surg* 2004, **240**:962–972. discussion 972–964.
29. Morita M, Yoshida R, Ikeda K, Egashira A, Oki E, Sadanaga N, Kakeji Y, Yamanaka T, Maehara Y: **Advances in esophageal cancer surgery in Japan: an analysis of 1000 consecutive patients treated at a single institute.** *Surgery* 2008, **143**:499–508.
30. Fujiwara H, Suchi K, Okamura S, Okamura H, Umehara S, Todo M, Shiozaki A, Kubota T, Ichikawa D, Okamoto K, et al: **Elevated serum CRP levels after induction chemoradiotherapy reflect poor treatment response in association with IL-6 in serum and local tumor site in patients with advanced esophageal cancer.** *J Surg Oncol* 2011, **103**:62–68.
31. Oka M, Yamamoto K, Takahashi M, Hakozaaki M, Abe T, Iizuka N, Hazama S, Hirazawa K, Hayashi H, Tangoku A, et al: **Relationship between serum levels of interleukin 6, various disease parameters and malnutrition in patients with esophageal squamous cell carcinoma.** *Cancer Res* 1996, **56**:2776–2780.
32. Urieli-Shoval S, Finci-Yeheskel Z, Dishon S, Galinsky D, Linke RP, Ariel I, Levin M, Ben-Shachar I, Prus D: **Expression of serum amyloid a in human ovarian epithelial tumors: implication for a role in ovarian tumorigenesis.** *J Histochem Cytochem* 2010, **58**:1015–1023.
33. Migita K, Kawabe Y, Tominaga M, Origuchi T, Aoyagi T, Eguchi K: **Serum amyloid A protein induces production of matrix metalloproteinases by human synovial fibroblasts.** *Lab Invest* 1998, **78**:535–539.
34. Li Y, Cai L, Wang H, Wu P, Gu W, Chen Y, Hao H, Tang K, Yi P, Liu M, et al: **Pleiotropic regulation of macrophage polarization and tumorigenesis by formyl peptide receptor-2.** *Oncogene* 2011, **30**:3887–3899.
35. De Santo C, Arscott R, Booth S, Karydis I, Jones M, Asher R, Salio M, Middleton M, Cerundolo V: **Invariant NKT cells modulate the suppressive activity of IL-10-secreting neutrophils differentiated with serum amyloid A.** *Nat Immunol* 2010, **11**:1039–1046.

doi:10.1186/1471-2407-12-365

Cite this article as: Wang et al.: Elevated levels of serum amyloid A indicate poor prognosis in patients with esophageal squamous cell carcinoma. *BMC Cancer* 2012 **12**:365.

Submit your next manuscript to BioMed Central and take full advantage of:

- Convenient online submission
- Thorough peer review
- No space constraints or color figure charges
- Immediate publication on acceptance
- Inclusion in PubMed, CAS, Scopus and Google Scholar
- Research which is freely available for redistribution

Submit your manuscript at
www.biomedcentral.com/submit

