


Association of Cystathionine β -Synthase Gene Polymorphisms With Preeclampsia

Clinical and Applied
Thrombosis/Hemostasis
2018, Vol. 24(9S) 285S-293S
© The Author(s) 2018
Article reuse guidelines:
sagepub.com/journals-permissions
DOI: 10.1177/1076029618808913
journals.sagepub.com/home/cat



Mercedes Piedad de León Bautista, MD, PhD¹,
Mirza Romero-Valdovinos, PhD², Beatriz Zavaleta-Villa, BSc²,
Arony Martínez-Flores, PhD³, and Angélica Olivo-Díaz, PhD² 

Abstract

Preeclampsia (PE) is a pregnancy disorder that increases maternal and fetal morbidity and mortality worldwide. High plasma levels of homocysteine (Hcy) are a risk factor for several cardiovascular diseases. Cystathionine β -synthase (CBS) plays an important role in Hcy homeostasis catalyzing the irreversible degradation of Hcy to cystathionine, protecting the endothelium from injury caused by hypoxia. Several mutations and polymorphisms may alter the expression of the CBS gene, resulting in variable levels of Hcy. The purpose of this study was to investigate the association of CBS gene polymorphisms with PE in Mexican women. A case-control study consisting of 129 pregnant women with PE (37 severe and 92 mild) and 173 women with uncomplicated pregnancies was performed. Polymorphisms, such as G797A, C785T, T833C, G919A, T959C, C1105T, and 844ins68 base pair, in the CBS gene were genotyped. The polymorphism G797A was monomorphic in cases with the presence of only G797A-G allele. Allele C785T-T and genotype C785T-C/T were associated with susceptibility in severe and mild PE. Alleles G797A-G and T959C-T were associated with susceptibility only in severe PE. Haplotype TGTWGTC was of susceptibility for severe PE and of protection for mild PE. Haplotypes CGTWGCC and CATWGTC seem to be protective for severe PE, but the latter is related to susceptibility in mild PE. The results suggest that C785T, G797A, and T959C mutations are contributing in different ways in severe and mild PE in our population and could be count as another related factor for this disease.

Keywords

CBS, hypertension, mutations, gene polymorphisms, preeclampsia, pregnancy

Introduction

Preeclampsia (PE) is a pregnancy disorder defined as the new onset of sustained hypertension, systolic blood pressure (BP) ≥ 140 mm Hg and/or diastolic BP ≥ 90 mm Hg, and proteinuria >300 mg/d arising after 20 weeks of gestation in a previously normotensive woman. In the absence of proteinuria, PE may be associated with any of the following: thrombocytopenia, renal insufficiency, or impaired liver functions.¹ The underlying physiopathology of PE comprises 2-stage process.² The first stage is characterized by reduced placental perfusion with impaired trophoblast invasion and inadequate remodeling of the uterine spiral arteries. The second stage refers to the maternal systemic manifestations characterized by inflammatory, metabolic, and thrombotic responses that converge to alter vascular function, resulting in multi-organ damage.^{3,4} This disorder represents a primary cause of maternal and fetal morbidity and mortality.

It is widely accepted that early and late PE have different etiologies and hemodynamic states; therefore, they should be

considered as different forms of the disease.⁵⁻⁷ Early-onset PE (before 34 weeks) appears to be more frequent in patients with lower body mass index (BMI) and is commonly associated with bilateral notching of the uterine artery Doppler, fetal growth restriction, and adverse maternal and neonatal outcomes.⁷⁻⁹ In contrast, late-onset PE (after 34 weeks) appears to be more frequent in patients with high BMI and low total vascular resistance and is more associated with a normal or mild uterine

¹ Molecular Diagnostic Lab, CENTRAL ADN, Morelia, Michoacán, Mexico

² Department of Molecular Biology and Histocompatibility, General Hospital "Dr Manuel Gea Gonzalez," Mexico City, Mexico

³ Department of Ecology of Pathogens Agents, General Hospital "Dr Manuel Gea Gonzalez," Mexico City, Mexico

Corresponding Author:

Angélica Olivo-Díaz, Department of Molecular Biology and Histocompatibility, General Hospital "Dr Manuel Gea Gonzalez," SSA, Calzada de Tlalpan 4800, Col Sección XVI, 14080 México City, Mexico.
Email: aolivod@yahoo.com



Creative Commons Non Commercial CC BY-NC: This article is distributed under the terms of the Creative Commons Attribution-NonCommercial 4.0 License (<http://www.creativecommons.org/licenses/by-nc/4.0/>) which permits non-commercial use, reproduction and distribution of the work without further permission provided the original work is attributed as specified on the SAGE and Open Access pages (<https://us.sagepub.com/en-us/nam/open-access-at-sage>).

resistance index, a low rate of fetal involvement, and most favorable perinatal outcomes.^{7,9,10}

In the United States, the incidence for PE increased from 3.4% in 1980 to 3.8% in 2010.¹¹ Prevalence is between 2% and 10% worldwide, with ~8.5 million women affected each year.^{12,13} Until 2007 in Mexico, the PE represented ~34% of maternal deceases, being the major cause of death during the pregnancy.¹⁴

Endothelial dysfunction in the placental revascularization is distinctive of PE,¹⁵ and altered levels of homocysteine (Hcy) have been involved as a predisposing factor. The Hcy is a sulfur amino acid originated from the metabolism of methionine, which oxidizes easily forming homocysteic acid and produces free radicals of superoxide anion and hydrogen peroxide, leading to damage of vascular endothelial cells. Thus, Hcy is an important indicator reflecting damage of vascular endothelial cells.^{16,17} It has been described that there are high levels of Hcy, both in mild and severe PE, which indicates that there is a close relationship between Hcy and hypertensive disorders that complicate pregnancy and the severity of PE, presenting a directly proportional relationship between the level of Hcy and PE.^{18,19}

The human cystathionine β -synthase (CBS) is a homotrimer consisting of 63-kDa subunits, which binds 2 cofactors, pyridoxal 5'-phosphate (PLP) and heme. The amino acid conformation of each CBS subunit is of 551. The CBS plays a central role in the regulation of plasma Hcy, catalyzing the PLP (B6 vitamin)-dependent conversion of Hcy to cystathionine.²⁰ It degrades Hcy by condensation with either serine or cysteine. Cysteine is not only required on protein synthesis but also acts as a precursor of glutathione, a potent antioxidant.²¹ In the latter reaction, the formation of hydrogen sulfide (H₂S) takes place, a gasotransmitter involved in many inflammatory processes, such as sepsis and vascular homeostasis,²² which protects the endothelium from injury caused by hypoxia.²³ The expression of CBS is tissue-specific, mainly found in the neural and cardiovascular systems, liver, kidney, and muscle.²⁴ There are evidence indicating that impaired Hcy metabolism is associated with risk of several diseases, such as atherothrombotic stroke,²⁵ neural tube defects,^{26,27} and some cancers.^{28,29} High levels of Hcy are also a risk factor for endothelial dysfunction and cardiovascular disorders.^{30,31}

To date, 164 CBS mutations and polymorphisms have been identified in CBS-deficient patients, of which 68% are missense mutations.³² Some of these mutant alleles are present in all populations (eg, T833C), but others only occur in specific populations. However, there are also studies in which variants of CBS associated with different diseases such as arterial occlusive disease, primary hypertension, or pregnancy complications have been identified.³³⁻³⁶ The aim of this study was to analyze whether there is an association between the development of early or late PE and some CBS mutations/polymorphisms in a case-control study of Mexican women.

Materials and Methods

Patients and Controls

We performed a case-control study, including 129 pregnant women diagnosed with PE and 173 with uncomplicated pregnancies, paired by age and residence with the cases. Afterward, patients were divided into severe (n = 37) and mild (n = 92) PE with the following inclusion criteria: Mild PE comprised women after 20 weeks of gestation who had repeated hypertension ≥ 140 mm Hg for systolic BP and ≥ 90 mm Hg for diastolic BP or proteinuria ≥ 300 mg/d. Severe PE included women after 20 weeks of gestation with recurrent maximum systolic BP ≥ 160 mm Hg and/or maximum diastolic BP ≥ 110 mm Hg or had proteinuria ≥ 300 mg/d. The exclusion criteria considered obstetric complications other than PE, infections during pregnancy, consumption of medicines that potentially affects the metabolism of lipids and carbohydrates, use of alcohol or other illicit drugs, and preexisting hypertension before pregnancy. The definition of the control group was women who, after 20 weeks of pregnancy, did not present signs of hypertension or any other complication. The recruitment of patients and controls was between 2004 and 2005 at the Department of Obstetrics and Gynecology of the Hospital General "Dr Manuel Gea Gonzalez."

This work complies with the current health laws of Mexico and approved by the Ethics in Research and Research Committees of the Hospital General "Dr Manuel Gea Gonzalez." The objective of the study was notified to all participants, who were included only after providing written informed consent.

DNA Extraction and Genotyping

DNA was obtained from 10 mL of EDTA-peripheral blood using proteinase K and phenol/chloroform protocol.³⁷ The single-nucleotide polymorphisms (SNPs) of CBS analyzed were 2 for exon 7 (C785T [rs149119723, T262M] and G797A [rs121964969, R266K]), 2 for exon 8 (T833C [rs5742905, I278T] and G919A [rs121964962, G307S]), 1 for exon 9 (T959C [rs781567152, V320A]), 1 for exon 10 (C1105T [rs117687681, R369C]), and 1 for the intron 7-exon 8 boundary (844ins68 base pair [bp]). The alleles and genotypes of the polymorphic regions were determined using the primers and conditions described by Kim et al,³⁸ who was the one who defined the activity of each mutation in a yeast system, with exception of 844ins68 bp. In addition, these mutations were tested to restore the folding and functional activity of the CBS, using solvents or chaperone molecules, presenting different behaviors that depended on the variant involved.³⁹⁻⁴² Mutation T959C [V320A] was sporadically included in these analysis. All the variants studied were nonsynonymous missense mutations, while 844ins68 bp polymorphism is an insertion. The methodology for the analysis of these polymorphisms was polymerase chain reaction-restriction fragment length polymorphism, with the endonucleases reported by Kim et al.³⁸

Table 1. CBS Allele and Genotype Frequencies in Severe and Mild PE.

Genotypes and Alleles	Control, n = 173	Severe PE, n = 92				Mild PE, n = 37			
	Frequency	Frequency	P ^a	OR (95% CI) ^b	Power	Frequency	P ^a	OR (95% CI) ^b	Power
C785T [rs149119723, T262M]									
C/C	90.00	61.96	1.36E-07	0.18 (0.09-0.36)		70.27	3.56E-03	0.26 (0.11-0.62)	
C/T	10.00	38.04	1.36E-07	5.41 (2.81-10.42)	0.9956	29.73	3.56E-03	3.81 (1.60-9.03)	0.5857
C	95.00	80.98	6.65E-07	0.23 (0.12-0.42)		85.14	5.00E-03	0.29 (0.13-0.67)	
T	5.00	19.02	6.65E-07	4.39 (2.38-8.09)	0.9885	14.86	5.00E-03	3.35 (1.49-7.49)	0.5434
G797A [rs121964969, R266K]									
G/G	91.18	100.00	0.014	9.22 (0.54-156.16)		100.00	0.216	3.74 (0.22-64.00)	
G/A	0.59	0.00	0.416	1.22 (0.04-36.96)		0.00	0.566	3.05 (0.10-92.77)	
A/A	8.24	0.00	0.021	0.12 (0.006-1.99)		0.00	0.258	0.29 (0.02-5.01)	
G	91.47	100.00	1.98E-04	17.47 (1.06-287.79)	0.8474	100.00	0.032	7.06 (0.43-116.85)	
A	8.53	0.00	2.02E-04	0.06 (0.003-0.95)		0.00	0.033	0.14 (0.008-2.36)	
T833C [rs5742905, I278T]									
T/T	98.27	92.39	0.040	0.23 (0.06-0.93)		97.30	0.786	0.49 (0.05-4.94)	
T/C	1.73	7.61	0.040	4.27 (1.08-16.94)		2.70	0.715	1.74 (0.18-17.26)	
T	99.13	96.20	0.042	0.24 (0.06-0.94)		98.65	0.787	0.49 (0.05-4.87)	
C	0.87	3.80	0.042	4.15 (1.06-16.23)		1.35	0.787	2.00 (0.21-19.53)	
844ins68 bp									
W/W	94.05	89.13	0.238	0.52 (0.21-1.30)		94.44	0.765	0.91 (0.19-4.36)	
W/ins	5.95	10.87	0.238	1.92 (0.76-4.80)		5.56	0.765	1.09 (0.23-5.22)	
W	97.02	94.57	0.248	0.53 (0.22-1.31)		97.22	0.769	0.91 (0.19-4.23)	
ins	2.98	5.43	0.248	1.87 (0.76-4.58)		2.78	0.769	1.10 (0.24-5.14)	
G919A [rs121964962, G307S]									
G/G	98.27	97.83	0.823	0.74 (0.12-4.52)		94.29	0.425	0.28 (0.04-1.71)	
G/A	1.73	2.17	0.823	1.35 (0.22-8.20)		5.71	0.425	3.64 (0.58-22.61)	
G	99.13	98.91	0.824	0.74 (0.12-4.49)		97.14	0.428	0.28 (0.05-1.70)	
A	0.87	1.09	0.824	1.34 (0.22-8.12)		2.86	0.428	3.58 (0.59-21.84)	
T959C [rs781567152, V320A]									
T/T	71.10	100.00	5.15E-08	37.82 (2.30-621.23)	0.9970	91.89	0.015	4.03 (1.18-13.73)	0.5173
T/C	28.32	0.00	8.39E-08	0.03 (0.002-0.45)		5.41	6.15E-03	0.18 (0.04-0.76)	
C/C	0.58	0.00	0.409	1.25 (0.04-37.61)		2.70	0.783	4.73 (0.28-77.33)	
T	85.26	100.00	1.92E-07	32.15 (1.97-524.29)	0.9939	94.59	0.048	2.73 (0.95-7.81)	
C	14.74	0.00	1.99E-07	0.03 (0.002-0.51)		5.41	0.048	0.37 (0.12-1.04)	
C1105T [rs117687681, R369C]									
C/C	97.69	95.65	0.586	0.52 (0.13-2.14)		97.30	0.654	0.60 (0.16-2.28)	
C/T	2.31	4.35	0.586	1.92 (0.47-7.84)		2.70	0.654	1.66 (0.44-6.32)	
C	98.84	97.83	0.588	0.53 (0.13-2.13)		98.65	0.656	0.61 (0.16-2.28)	
T	1.16	2.17	0.588	1.89 (0.47-7.68)		1.35	0.656	1.65 (0.44-6.21)	

Abbreviations: CBS, cystathionine β-synthase; CI, confidence interval; OR, odds ratio; PE, preeclampsia.

^aP Value with Yates correction, level of significance at $P \leq .007$.

^bOdds ratio (95% confidence interval) characters in bold and italics indicate statistically significant values associated with susceptibility.

Statistical Analysis

Calculation of allele and genotype frequencies was carried out by direct counting and then it was compared between patients and controls. The bivariate χ^2 analysis with the correction of Yates and the calculation of the odds ratio (OR) and 95% confidence intervals (95% CIs) were performed with the SPSS (v21.0) software (IBM Corp, Armonk, New York). Fisher exact test was used when appropriate. The Bonferroni correction was calculated with the SNPSpD (<https://genepi.qimr.edu.au/general/daledN/SNPSpD>) software, based on the effective number of SNPs.⁴³ It was determined that the effective number of independent tests was 7; therefore, the level of corrected

significance for the SNP association was established at $P \leq .007$. We used logistic regression analysis to determine the association of the CBS SNPs with total PE, severe PE, and mild PE. Statistical power analysis and sample size calculation were performed using the G*Power (v3.1.9.2) program. Based on an effective size index of 0.4 (corresponding to a “moderate” gene effect), the sample size used in our study had >95% power at an α error of .05 with 2 tails.⁴⁴

Haplotypes and linkage disequilibrium (LD) blocks were generated by CI method using Haploview (v4.2).⁴⁵ To establish the most informative model of Mendelian association (dominant, codominant, recessive, overdominant, or log additive), the online program SNPStats (<https://www.snpstats.net/start>).

Table 2. CBS Haplotype Frequencies in Severe and Mild PE.^a

Haplotypes ^b	Control, n = 173		Severe PE, n = 92		Mild PE, n = 37		
	Frequency	Frequency	P ^c	OR (95% CI) ^d	Frequency	P ^c	OR (95% CI) ^d
CGTWGTC	69.54	73.75	0.31	1.23 (0.825-1.837)	74.19	0.46	1.24 (0.701-2.188)
TGTWGTC	3.96	16.47	6.83E-07	4.78 (2.456-9.309)	13.51	0.04	0.30 (0.090-0.990)
CGTWGCC	12.60	0.00	5.03E-07	0.02 (0.001-0.308)	4.05	0.02	0.08 (0.005-1.298)
CATWGTC	7.92	0.00	8.98E-05	0.03 (0.002-0.521)	0.00	6.77E-04	4.10 (1.717-9.795)
CGTinsGTC	1.13	2.01	0.42	1.80 (0.429-7.551)	1.35	0.87	1.20 (0.132-10.969)
CGCinsGTC	0.87	2.72	0.10	3.19 (0.755-13.517)	—	—	—

Abbreviations: CBS, cystathionine β-synthase; CI, confidence interval; ins, ins68 bp; OR, odds ratio; PE, preeclampsia; WV, wild.

^aCharacters in bold and italics indicate statistically significant values associated to susceptibility.

^bCBS haplotypes: C785T-G797A-T833C-844ins68 bp-G919A-T959C-C1105T.

^cP Value with Yates correction, level of significance at P ≤ .05.

^dOdds ratio (95% confidence interval).

htm) was used.⁴⁶ Genotype frequencies for each SNP were tested for possible deviations from the Hardy-Weinberg equilibrium using χ^2 test with 1 degree of freedom.

Results

Characteristics of the Groups

Maternal age in the control group was 24 ± 6 years, while overall in the PE group was 25 ± 7 years; in the severe and mild PE groups, the age was 25 ± 7 years and 26 ± 7 years, respectively.

Cystathionine β-Synthase Allele, Genotype, and Haplotype Distribution

Allele and genotype frequency of CBS polymorphisms in all PE cases and controls is shown in Table 1S. Frequency of controls and patients with severe and mild PE is shown in Table 1. The wild alleles were the most frequent in every group; polymorphism G797A was monomorphic in cases with the presence of only G797A-G allele. Allele C785T-T and genotypes C785T-C/T and T959C-T/T were associated with susceptibility in severe and mild PE, while the counterparts were of protection. Alleles G797A-G and T959C-T were associated with susceptibility only in severe PE. The only SNP not in Hardy-Weinberg equilibrium was G797A (<.0001) and the results found for this SNP could be a bias in our analysis. In all genotype comparisons of the SNPs, the codominant model was prevalent. The general success rate for the typing technique was 99.34%.

The Haploview software established 7 haplotypes for PE, 6 for severe PE, and 5 for mild PE (Tables 2S and 2). When all patients with PE were analyzed, the TGTWGTC haplotype was found to be of susceptibility (P = 4.80E-07; OR [95% CI] = 4.58 [2.42-8.66]), while the CGTWGCC and CATWGTC haplotypes were of protection (Table 2S). However, the TGTWGTC haplotype was of susceptibility for severe PE and of protection for mild PE (Table 2). The CGTWGCC and CATWGTC haplotypes appear to be of protection for severe PE, but the latter is related to susceptibility in mild PE.

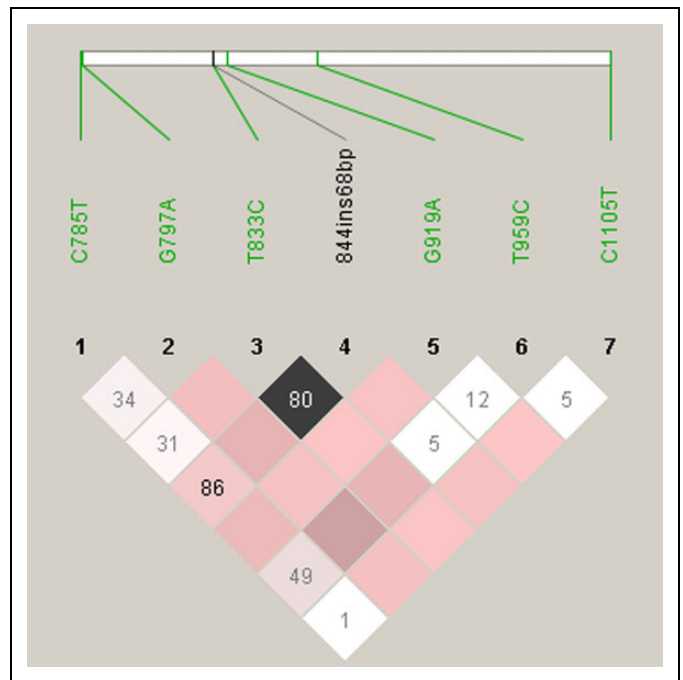


Figure 1. Linkage disequilibrium (LD) among the genotyped CBS SNPs in preeclampsia. The pairwise LD plot was created by HAPLOVIEW 4.2. Within each diamond is presented the standardized coefficient of LD (D'), using the alternate D'/LOD scheme: white represents strong evidence of recombination (low or high LOD and low D'); shades of pink represent uninformative (low LOD and low D'); black represents strong evidence of LD (high LOD and high D'). Intrinsic single-nucleotide polymorphisms (SNPs) C785T, G797A, T833C, G919A, T959C, and C1105T are shown in green. A marker pair is said to show moderate or usable LD if |D'| is between 0.33 and 0.5 and strong LD if |D'| is 0.5 or above (ie, at least half the maximum value).

The power calculation was performed in the significant associations, finding that the values in PE (Table 1S) and severe PE (Table 1) were above the rejection level of the null hypothesis. The values of power were lower in mild PE, probably due to the sample size.

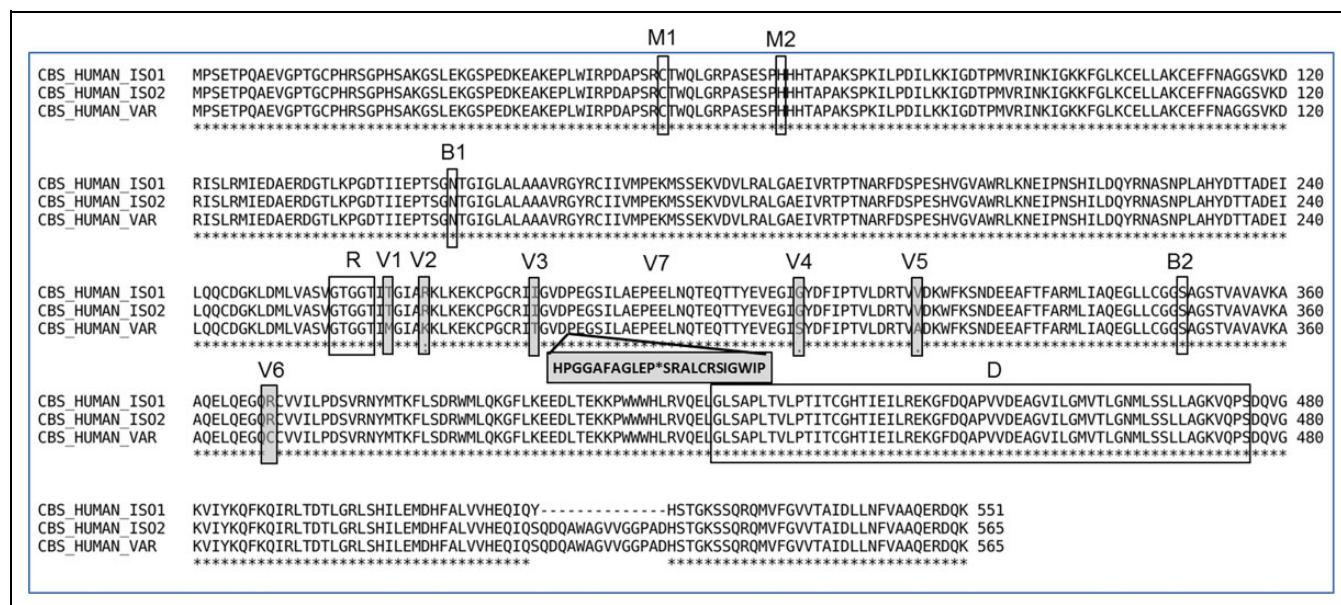


Figure 2. Amino acid sequence alignments among 2 CBS protein isoforms and a generated sequence with the 7 polymorphisms analyzed in the present study. M indicates metal-binding sites 1 and 2; iron, heme axial ligand; B, binding sites 1 and 2; R, pyridoxal phosphate binding region; D, CBS domain; V, natural variants in the protein. V1 indicates VAR_008072. T → M. In CBS deficiency; moderate form. Corresponds to variant dbSNP: rs149119723. V2 indicates VAR_008074. R → K. In CBS deficiency; mild form; decreased cystathionine β-synthase activity; decreased homotetramer formation; no effect on heme-binding; decreased stability. Corresponds to variant dbSNP: rs121964969. V3 indicates VAR_002184. I → T. In CBS deficiency; mild-to-severe form; common mutation; decreased expression; loss of cystathionine β-synthase activity; impaired stimulation by AdoMet and AdoHcy; severely affects homotetramer formation by promoting formation of larger aggregates. Corresponds to variant dbSNP: rs5742905. V4 indicates VAR_002186. G → S. In CBS deficiency; moderate-to-severe form; linked with D-534; common mutation; loss of cystathionine β-synthase activity; impaired stimulation by AdoMet and AdoHcy; no effect on homotetramer formation. Corresponds to variant dbSNP: rs121964962. V5 indicates VAR_008078. V → A. In CBS deficiency; has 36% of wild-type enzyme activity. Corresponds to variant dbSNP: rs781567152. V6 indicates VAR_008084. R → C. In CBS deficiency; when linked with C-491 severe form; decreased cystathionine β-synthase activity; decreased homotetramer formation. Corresponds to variant dbSNP: rs117687681. V7 indicates 844ins68. Insertion of the following sequence: HPGGAFAGLEP*SRALCRSIGWIP. * Stop codon. Data obtained from UniProtKB-P35520 (CBS_HUMAN).⁵⁴

Linkage Disequilibrium

The pairwise LD (D') for all 7 SNPs is presented in Figure 1. Noted in green are the 6 SNPs located in coding regions. The LD plot generated in Haploview (v4.2) indicates that SNPs T833C and 844ins68 bp are in strong LD, while C785T, G797A, G919A, T959C, and C1105T seem to be almost independent of one another.

Discussion

Until now, several risk factors related to PE have been reported, such as the increase in the plasma concentration of Hcy, which is an intermediate amino acid in the metabolism of methionine, giving rise to the methionine or cysteine through the transsulfuration pathway, where CBS has the ability to convert Hcy to cysteine, pyruvate, and H_2S .^{9,47-50}

Therefore, the objective of this study was to test the evidence of association between 7 SNPs in the *CBS* gene with severe and mild PE. We used a population-based case-control design in a Mexican sample, focusing on the point mutations C785T (T262M), G797A (R266K), T833C (I278T), G919A

(G307S), T959C (V302A), C1105T (R369C), and 844ins68 bp, which are located into or near to the heme site and the catalytic domain.

To determine the functional behavior of *CBS* mutations, Kim et al used one growth testing mutations yeast system. They found that strains containing the T833C (I278T), G919A (G307S), and C785T (T262M) mutations were unable to form colonies on standard media without cysteine, indicating a severe affection to CBS enzyme. Cells containing the T959C (V302A) mutation formed significantly smaller colonies than those with the wild-type CBS. Yeast containing the G797A (R266K) and the C1105T (R369C) mutation grew just as well as wild type, indicating that these mutations have less severe effects on enzyme function than the above mentioned.³⁸

Residues Tyr223 and Gly307 seem to be crucial for substrate specificity, since they are spatially adjacent to the substrate-binding site; afterward, mutation Gly307S has shown <1.7% activity in yeast, with respect to wild type.^{51,52} In addition, residue R266 is part of the heme-binding site of CBS, and T262 is in the interface between heme-binding pocket and active site in the α -helix 8, which means that both are adjacent mutations; then, any change in these amino acids will

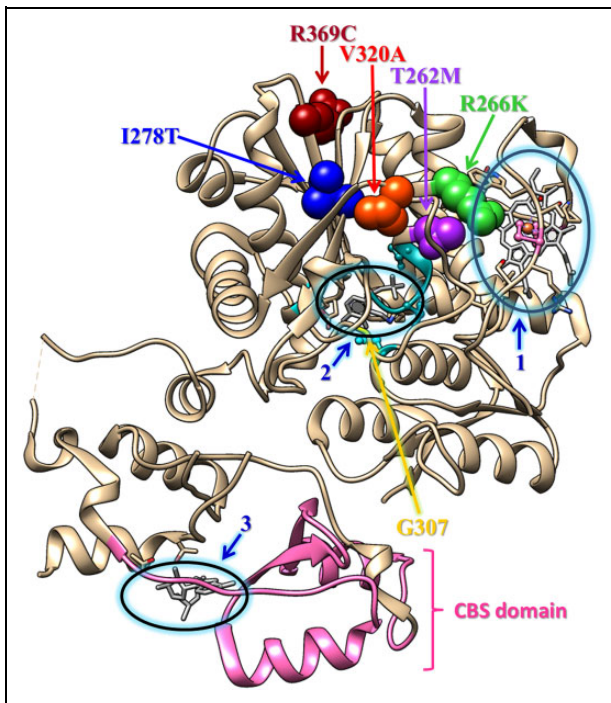


Figure 3. Schematic representation of the tertiary fold of a monomer of CBS (from 4PCU chain A). The molecule is colored in tan. In ball-and-stick representation, colored in dark gray, and surrounded by an ellipse are (1) heme, (2) active site PLP (pyridoxal 5'-phosphate), and (3) AdoMet (*S*-adenosyl-L-methionine) site. The residues analyzed in the present work are marked by an arrow and in sphere representation. The CBS domain is in pink. Cystathionine β -synthase (PDB file 4PCU: A, B). Crystal structure of delta516-525 E201S human cystathionine β -synthase with AdoMet. Doi: 10.2210/pdb4pcu/pdb.

compromise also the protein function.⁵¹ Moreover, clinicians have demonstrated that the patients with these point mutations can be subject of doses of vitamin B₆ treatment responding with a better prognosis of the disease.⁴¹ Mutations I278T and V320A are in the active core and have a phenotype with no response for B₆ in yeast; however, V320A is inducible by AdoMet and is not behaving like the regulatory domain mutants that have been described. The R369C mutation, located equally in the active core, seems to not affect CBS function in yeast and has only 34% of wild-type activity in *Escherichia coli*.^{38,53}

To indicate the position of the mutations along the gene, an amino acid sequence alignment was made (Figure 2), using data from the UniProtKB database for the 2 isoforms (ISO1: P35520 and ISO2: P35520-2) of the human CBS protein and the 7 polymorphisms analyzed in this study.⁵⁵ Similarly, Figure 3 was elaborated using the Chimera (v1.11.2) program to show the mutations in the protein tertiary structure, based in the PBPC 4PCU chain A file.^{56,57} The residues presented in Figure 3 are in the active core, surrounding the pocket where the PLP junction is and in the heme-binding pocket, then residues V320A and T262M, which are associated with PE, are also close to these structures. The third residue associated with PE is R266K, which is as mentioned previously found at the

interface between the heme-binding pocket and the active site. If some of these residues are modified, steric hindrance probably prevents the binding of PLP, altering the function of CBS, which can cause the accumulation of Hcy and the disease.

Although the SNP T833C (I278T) is the prevalent mutation in several populations, in this study it was not associated with PE, which may be due to differences in the ethnic characteristics of the Mexican population. Regarding the 844ins68 mutation of CBS, Tsai et al found that male patients with coronary artery disease in the upper Midwestern regions of the United States showed significantly lower blood Hcy levels compared to fasting blood samples when they consume methionine orally.^{58,59} Our findings demonstrated that this polymorphism does not increase the risk of any form of PE, as was reported by Kim et al and Also-Rallo et al for Caucasian populations, in the United States and Spain, respectively.^{35,60}


In a study in which several *CBS* gene polymorphisms are studied to see their association with early- and late-onset PE, Holwerda et al found that women with the minor allele of rs11203172 have a reduced risk of early-onset PE. They described that normotensive pregnant women with the minor allele of rs11203172 and rs234713 have lower cysteine levels than those who do not, while women with the minor allele of rs1789953 have increased levels of cysteine and cystathionine.³⁶ However, although these results are interesting and support the idea that polymorphisms and mutations of CBS are involved in PE, they cannot be compared with the results of this article, since the polymorphisms analyzed are different.

Our results revealed that CBS SNPs C785T, G797A, and T959C were associated with susceptibility to PE, both severe and mild, in particular the C785T-T allele and the C785T-C/T genotype. These results suggest that CBS SNPs C785T, G797A, and T959C may be influencing the development of PE, as a predisposing factor of the disease, since the statistical power was greater than 0.80 in total PE and in severe PE; however, the sample size of mild PE did not allow to obtain enough power to reject the null hypothesis. Therefore, more studies are needed to confirm these associations, including gene–gene interaction approaches.

Despite the international controversy between the influence of high levels of Hcy and the development of PE, reports continue to emerge supporting this concept, for example, an association of high plasma levels of Hcy and severe PE has been demonstrated in Mexican women, which supports the study of the enzymes involved in the production and consumption of Hcy.⁶¹

Additionally, it should be considered that CBS variants, dietary habits, dietary supplements, and the ethnicity of each population could generate a gradient of the transsulfuration pathway intermediaries, or other pathways involved in vascular protection, affecting the placental microenvironment and producing endothelial dysfunction and impaired placentation. Further studies are necessary to confirm this hypothesis.⁵⁴

ORCID iD

Angélica Olivo-Díaz  <https://orcid.org/0000-0003-0492-1504>

Acknowledgments

The authors wish to thank Rocío Jimenez-Lucio and David Sierra-Barrera for technical support.

Declaration of Conflicting Interests

The author(s) declared no potential conflicts of interest with respect to the research, authorship, and/or publication of this article.

Funding

The author(s) received no financial support for the research, authorship, and/or publication of this article.

Supplemental Material

Supplemental material for this article is available online.

References

- Lambert G, Brichant JF, Hartstein G, Bonhomme V, Dewandre PY. Preeclampsia: an update. *Acta Anaesthesiol Belg.* 2014;65(4):137-149.
- Roberts JM, Hubel CA. Is oxidative stress the link in the two-stage model of pre-eclampsia? *Lancet.* 1999;354(9181):788-789. doi:10.1016/S0140-6736(99)80002-6.
- Roberts JM, Gammill HS. Preeclampsia—recent insights. *Hypertension.* 2005;46(6):1243-1249. doi:10.1161/01.HYP.0000188408.49896.c5.
- Stegers EAP, von Dadelszen P, Duvekot JJ, Pijnenborg R. Preeclampsia. *Lancet.* 2010;376(9741):631-644. doi:10.1016/S0140-6736(10)60279-6.
- Von Dadelszen P, Magee LA, Roberts JM. Subclassification of preeclampsia. *Hypertens Pregnancy.* 2003;22(2):143-148. doi:10.1081/PRG-120021060.
- Huppertz B. Placental origins of preeclampsia: challenging the current hypothesis. *Hypertension.* 2008;51(4):970-975. doi:10.1161/HYPERTENSIONAHA.107.107607.
- Valensise H, Vasapollo B, Gagliardi G, Novelli GP. Early and late preeclampsia: two different maternal hemodynamic states in the latent phase of the disease. *Hypertension.* 2008;52(5):873-880. doi:10.1161/HYPERTENSIONAHA.108.117358.
- Murphy DJ, Striate GM. Mortality and morbidity associated with early-onset preeclampsia. *Hypertens Pregnancy.* 2000;19(2):221-231. doi:10.1081/PRG-100100138.
- Ness RB, Sibai BM. Shared and disparate components of the pathophysiologies of fetal growth restriction and preeclampsia. *Am J Obstet Gynecol.* 2006;195(1):40-49. doi:10.1016/j.ajog.2005.07.049.
- Sibai B, Dekker G, Kupferminc M. Pre-eclampsia. *Lancet.* 2005;365(9461):785-99. doi:10.1016/S0140-6736(05)17987-2.
- Ananth CV, Keyes KM, Wapner RJ. 2013 pre-eclampsia rates in the United States, 1980–2010: age-period-cohort analysis. *BMJ.* 2013;347:f6564. doi:10.1136/bmj.f6564.
- Osungbade KO, Ige OK. Public health perspectives of preeclampsia in developing countries: implication for health system strengthening. *J Pregnancy.* 2011;2011:6. doi:10.1155/2011/481095.
- Anderson UD, Olsson MG, Kristensen KH, Åkerström B, Hansson SR. Review: biochemical markers to predict preeclampsia. *Placenta.* 2012;33(suppl):S42-S47. doi:10.1016/j.placenta.2011.11.021.
- Sánchez-Rodríguez EN, Nava-Salazar S, Morán C, Romero-Arauz JF, Cerbón-Cervantes MA. The two leading hypothesis regarding the molecular mechanisms and etiology of preeclampsia, and the Mexican experience in the world context. *Rev Invest Clin.* 2010;62(3):252-260.
- Refsum H, Ueland PM, Nygård O, Vollset SE. Homocysteine and cardiovascular disease. *Annu Rev Med.* 1998;49:31-62. doi:10.1146/annurev.med.49.1.31.
- Wang XC, Sun WT, Yu CM, et al. ER stress mediates homocysteine-induced endothelial dysfunction: modulation of IKCa and SKCa channels. *Atherosclerosis.* 2015;242(1):191-198. doi:10.1016/j.atherosclerosis.2015.07.021.
- Stiefel P, Miranda ML, Bellido LM, et al. Genotype of the CYBA promoter -930A/G, polymorphism C677T of the MTHFR and APOE genotype in patients with hypertensive disorders of pregnancy: an observational study. *Med Clin (Barc).* 2009;133(17):657-661. doi:10.1016/j.medcli.2009.03.042.
- Dodds L, Fell DB, Dooley KC, et al. Effect of homocysteine concentration in early pregnancy on gestational hypertensive disorders and other pregnancy outcomes. *Clin Chem.* 2008;54(2):326-334. doi:10.1373/clinchem.2007.097469.
- Zeng Y, Li M, Chen Y, Wang S. Homocysteine, endothelin-1 and nitric oxide in patients with hypertensive disorders complicating pregnancy. *Int J Clin Exp Pathol.* 2015;8(11):15275-15279.
- Nazki FH, Sameer AS, Ganaie BA. Folate: metabolism, genes, polymorphisms and the associated diseases. *Gene.* 2014;533(1):11-20. doi:10.1016/j.gene.2013.09.063.
- Blom HJ, Smulders Y. Overview of homocysteine and folate metabolism. With special references to cardiovascular disease and neural tube defects. *J Inherit Metab Dis.* 2011;34(1):75-81. doi:10.1007/s10545-010-9177-4.
- Sponholz C, Kramer M, Schöneweck F, et al. Polymorphisms of cystathionine beta-synthase gene are associated with susceptibility to sepsis. *Eur J Hum Genet.* 2016;24(7):1041-1048. doi:10.1038/ejhg.2015.231.
- Bearden SE, Beard RS Jr, Pfau JC. Extracellular transsulfuration generates hydrogen sulfide from homocysteine and protects endothelium from redox stress. *Am J Physiol Heart Circ Physiol.* 2010;299(5):H1568-H1576. doi:10.1152/ajpheart.00555.2010.
- Quéré I, Paul V, Rouillac C, et al. Spatial and temporal expression of the cystathionine beta-synthase gene during early human development. *Biochem Biophys Res Commun.* 1999;254(1):127-137. doi:10.1006/bbrc.1998.9079.
- Pezzini A, Del Zotto E, Archetti S, et al. Plasma homocysteine concentration, C677T MTHFR genotype, and 844ins68 bp CBS genotype in young adults with spontaneous cervical artery dissection and atherothrombotic stroke. *Stroke.* 2002;33(3):664-669.
- Ouyang S, Li Y, Liu Z, Chang H, Wu J. Association between MTR A2756G and MTRR A66G polymorphisms and maternal risk for neural tube defects: a meta-analysis. *Gene.* 2013;515(2):308-312. doi:10.1016/j.gene.2012.11.070.
- Ouyang S, Liu Z, Li Y, Ma F, Wu J. Cystathionine beta-synthase 844ins68 polymorphism is unrelated to susceptibility to neural

- tube defects. *Gene*. 2014;535(2):119-123. doi:10.1016/j.gene.2013.11.052.
28. Le Marchand L, Haiman CA, Wilkens LR, Kolonel LN, Henderson BE. MTHFR polymorphisms, diet, HRT, and breast cancer risk: the multiethnic cohort study. *Cancer Epidemiol Biomarkers Prev*. 2004;13(12):2071-2077.
29. Le Marchand L, Wilkens LR, Kolonel LN, Henderson B. The MTHFR C677T polymorphism and colorectal cancer: the multiethnic cohort study. *Cancer Epidemiol Biomarkers Prev*. 2005;14(5):1198-1203. doi:10.1158/1055-9965.EPI-04-0840.
30. Ueland PM, Refsum H, Beresford SA, Vollset SE. The controversy over homocysteine and cardiovascular risk. *Am J Clin Nutr*. 2000;72(2):324-332. doi:10.1093/ajcn/72.2.324.
31. Brustolin S, Giugliani R, Félix TM. Genetics of homocysteine metabolism and associated disorders. *Braz J Med Biol Res*. 2010;43(1):1-7.
32. CBS database-all mutations. <http://cbs.lfl.cuni.cz/mutations.php>. Accessed October 18, 2017.
33. Lievers KJ, Kluijtmans LA, Heil SG, et al. Cystathionine beta-synthase polymorphisms and hyperhomocysteinaemia: an association study. *Eur J Hum Genet*. 2003;11(1):23-29. doi:10.1038/sj.ejhg.5200899.
34. Zhang Y, Wang H, Sun HW, et al. Correlation between cystathionine β -synthase T883C genetic polymorphism and primary hypertension. *Exp Ther Med*. 2014;8(3):713-718. doi:10.3892/etm.2014.1799.
35. Also-Rallo E, Lopez-Quesada E, Urreiziti R, et al. Polymorphisms of genes involved in homocysteine metabolism in preeclampsia and in uncomplicated pregnancies. *Eur J Obstet Gynecol Reprod Biol*. 2005;120(1):45-52. doi:10.1016/j.ejogrb.2004.08.008.
36. Holwerda KM, Weedon-Fekjær MS, Staff AC, et al. The association of single nucleotide polymorphisms of the maternal cystathionine- β -synthase gene with early-onset preeclampsia. *Pregnancy Hypertens*. 2016;6(1):60-65. doi:10.1016/j.preghy.2015.12.001.
37. Green MR, Sambrook J. Isolation of high-molecular-weight DNA from monolayer cultures of mammalian cells using proteinase k and phenol. *Cold Spring Harb Protoc*. 2017. doi:10.1101/pdb.prot093468.
38. Kim CE, Gallagher PM, Guttormsen AB, et al. Functional modeling of vitamin responsiveness in yeast: a common pyridoxine-responsive cystathionine beta-synthase mutation in homocystinuria. *Hum Mol Genet*. 1997;6(13):2213-2221. doi:10.1093/hmg/6.13.2213.
39. Kopecká J, Krijt J, Raková K, Kožich V. Restoring assembly and activity of cystathionine β -synthase mutants by ligands and chemical chaperones. *J Inherit Metab Dis*. 2011;34(1):39-48. doi:10.1007/s10545-010-9087-5.
40. Melenovská P, Kopecká J, Krijt J, et al. Chaperone therapy for homocystinuria: the rescue of CBS mutations by heme arginate. *J Inherit Metab Dis*. 2015;38(2):287-294. doi:10.1007/s10545-014-9781-9.
41. Meier M, Oliveriusova J, Kraus JP, Burkhard P. Structural insights into mutations of cystathionine beta-synthase. *Biochim Biophys Acta*. 2003;1647(1-2):206-213. doi:10.1016/S1570-9639(03)00048-7.
42. Kožich V, Sokolová J, Klatovská V, et al. Cystathionine beta-synthase mutations: effect of mutation topology on folding and activity. *Hum Mutat*. 2010;31(7):809-819. doi:10.1002/humu.21273.
43. Li J, Ji L. Adjusting multiple testing in multilocus analyses using the eigenvalues of a correlation matrix. *Heredity (Edinb)*. 2005;95(3):221-227. doi:10.1038/sj.hdy.6800717.
44. Faul F, Erdfelder E, Lang AG, Buchner A. G*Power 3: a flexible statistical power analysis program for the social, behavioral, and biomedical sciences. *Behav Res Methods*. 2007;39(2):175-191. doi:10.3758/BF03193146.
45. Barrett JC, Fry B, Maller J, Daly MJ. Haploview: analysis and visualization of LD and haplotype maps. *Bioinformatics*. 2005;21(2):263-265. doi:10.1093/bioinformatics/bth457.
46. Solé X, Guinó E, Valls J, Iniesta R, Moreno V. SNPStats: a web tool for the analysis of association studies. *Bioinformatics*. 2006;22(15):1928-1929. doi:10.1093/bioinformatics/btl268.
47. Powers RW, Evans RW, Majors AK, et al. Plasma homocysteine concentration is increased in preeclampsia and is associated with evidence of endothelial activation. *Am J Obstet Gynecol*. 1998;179(6 Pt 1):1605-1611. doi:10.1016/S0002-9378(98)70033-X.
48. Holmes VA, Wallace JM, Alexander HD, et al. Homocysteine is lower in the third trimester of pregnancy in women with enhanced folate status from continued folic acid supplementation. *Clin Chem*. 2005;51(3):629-634. doi:10.1373/clinchem.2004.032698.
49. Ueland PM, Vollset SE. Homocysteine and folate in pregnancy. *Clin Chem*. 2004;50(8):1293-1295. doi:10.1373/clinchem.2004.035709.
50. Beard RS Jr, Bearden SE. Vascular complications of cystathionine β -synthase deficiency: future directions for homocysteine-to-hydrogen sulfide research. *Am J Physiol Heart Circ Physiol*. 2011;300(1): H13-H26. doi:10.1152/ajpheart.00598.2010.
51. Meier M, Janosik M, Kery V, Kraus JP, Burkhard P. Structure of human cystathionine beta-synthase: a unique pyridoxal 5'-phosphate-dependent heme protein. *EMBO J*. 2001;20(15):3910-3916. doi:10.1093/emboj/20.15.3910.
52. Kruger WD, Wang L, Jhee KH, Singh RH, Elsas LJ II. Cystathionine β synthase deficiency in Georgia (USA): correlation of clinical and biochemical phenotype with genotype. *Hum Mutat*. 2003;22(6):434-441. doi:10.1002/humu.10290.
53. Janošik M, Sokolová J, Janošiková B, Krijt J, Klatovská V, Kožich V. Birth prevalence of homocystinuria in Central Europe: frequency and pathogenicity of mutation c.1105C T (p.R369C) in the cystathionine beta-synthase gene. *J Pediatr*. 2009;154(3):431-437. doi:10.1016/j.jpeds.2008.09.015.
54. Kasture VV, Sundrani DP, Joshi SR. Maternal one carbon metabolism through increased oxidative stress and disturbed angiogenesis can influence placental apoptosis in preeclampsia. *Life Sci*. 2018;206:61-69. doi:10.1016/j.lfs.2018.05.029.
55. The UniProt Consortium. UniProt: the universal protein knowledgebase. *Nucleic Acids Res*. 2017;45:D158-D169. doi:10.1093/nar/gkw1099.
56. Ereño-Orbea J, Majtan T, Oyenarte I, Kraus JP, Martínez-Cruz LA. Structural insight into the molecular mechanism of allosteric activation of human cystathionine β -synthase by S-adenosylmethionine. *Proc Natl Acad Sci U S A*. 2014;111(37):E3845-E3852. doi:10.1073/pnas.1414545111.

57. Pettersen EF, Goddard TD, Huang CC, et al. UCSF Chimera—a visualization system for exploratory research and analysis. *J Comput Chem.* 2004;25(13):1605-1612. doi:10.1002/jcc.20084.
58. Tsai MY, Welge BG, Hanson NQ, et al. Genetic causes of mild hyperhomocysteinemia in patients with premature occlusive coronary artery diseases. *Atherosclerosis.* 1999;143(1):163-170. doi:10.1016/S0021-9150(98)00271-8.
59. Tsai MY, Bignell M, Yang F, Welge BG, Graham KJ, Hanson NQ. Polygenic influence on plasma homocysteine: association of two prevalent mutations, the 844ins68 of cystathionine beta-synthase and A(2756)G of methionine synthase, with lowered plasma homocysteine levels. *Atherosclerosis.* 2000;149(1):131-137. doi:10.1016/S0021-9150(99)00297-X.
60. Kim YJ, Williamson RA, Murray JC, et al. Genetic susceptibility to preeclampsia: roles of cytosine-to-thymine substitution at nucleotide 677 of the gene for methylene tetrahydrofolate reductase, 68-base pair insertion at nucleotide 844 of the gene for cystathionine beta-synthase, and factor V Leiden mutation. *Am J Obstet Gynecol.* 2001;184(6):1211-1217. doi:10.1067/mob.2001.110411.
61. López-Alarcón M, Montalvo-Velarde I, Vital-Reyes VS, Hinojosa-Cruz JC, Leños-Miranda A, Martínez-Basila A. Serial determinations of asymmetric dimethylarginine and homocysteine during pregnancy to predict pre-eclampsia: a longitudinal study. *BJOG.* 2015;122(12):1586-1592. doi:10.1111/1471-0528.13516.