

# A Retrospective Study of Acute Renal Failure in Children: Its Incidence, Etiology, Complications and Prognosis

Kadar Ismail Hassan <sup>1</sup>, Jama Hodan M <sup>2</sup>, Chunfu Li <sup>3</sup>

1. Nanfang Hospital, Southern Medical University 2. Department of Nephrology, Hargeysa Group Hospital, Hargeysa City, Somalia. 3. Department of Paediatrics, Nanfang Hospital, Southern Medical University, Guangzhou, P.R.China

✉ **Corresponding author:** Kadar Ismail Hassan, santhoshpk73@yahoo.com

Disclosures can be found in Additional Information at the end of the article

---

## Abstract

### Background

Acute renal failure (ARF) developed due to various causes and may lead to significant morbidity and mortality among pediatric patients.

### Objectives

The study was conducted to determine the incidence, etiology, outcome of treatment and clinical presentation of ARF in pediatric patients in Somalia.

### Methods

Comprehensive case history of 39 pediatric patients below 12 years of age, admitted with renal diseases in four tertiary care hospitals in Hargeisa and Borama cities in Somalia during December 2015 to November 2016. They were subjected to clinical investigation and laboratory test analysis based on the inclusion criteria of renal insufficiency characterized by serum creatinine level more than 1.5 mg/dl.

### Results

ARF was most commonly found in five to 12 years age group (53.8%) compared to infant (zero to one year) and pre-school (one to five years) children (23.08%). Mean age of presentation was 6.14 years. Male female ratio in this study was 1.2: 1. Most common presenting clinical feature in our study was oliguria (97.43%), swelling (69.2%), fever (84.1%), abdomen pain and nausea-vomiting (41.02%). Common clinical signs were edema (66.66%), altered sensorium (51.28%), hematuria (48.71%) and hypertension (38.46%). Snake bite and acute post streptococcal glomerulonephritis were the two most common causes of ARF in children in our study. Common complications were hypertension (38.46%), anemia (35.89%), hyperkalemia (25.64%) and infection (20.51%), all of which were within the previously reported range. The factors which correlated positively with increased mortality and morbidity were females with age below one year, etiology like septicemia and systemic lupus erythematosus (SLE), high peak serum creatinine concentration and complicated by disseminated intravascular coagulation (DIC).

### Conclusion

Many causes of ARF are preventable and it should be possible to reduce mortality and morbidity due to ARF through purposive preventive measure and availability of the better medical facility.

**Categories:** Emergency Medicine, Pediatrics, Epidemiology/Public Health

**Keywords:** acute renal failure, incidence, etiology, clinical presentation, complication and outcome

---

## Introduction

Acute renal problems constitute a large proportion of hospital admission and outpatient attendance among pediatric population. Acute renal failure (ARF) in children, compared with adults, are often reported with speedy recovery without any residual effect and complications. Among the hospitalized patients, ARF may often lead to life-threatening conditions and it is regarded as one of the major cause of significant morbidity and mortality among pediatric patients. Five to 10% of patients in pediatric intensive care unit (PICU) have evidence of renal insult and ARF occurs in 8% of neonates in the neonatal intensive care unit (NICU) [1-2].

Despite the major advance in the PICU tools and renal replacement therapy (RRT) methods, the reported mortality rate among inpatients ARF is 29% to 46% [3-4]. The high frequency of occurrence and substantial morbidity and mortality of ARF demands a logical approach to its prevention and early diagnosis and the prompt recognition and management of its complication. Therefore, the emphasis on prevention remains cardinal but early detection and appropriate treatment also could provide complete recovery which is a major goal of ARF therapy.

The ARF is an abrupt cessation of kidney function with life-threatening consequences [5] in association with significant multiple organ system failure (MOSF) [6], the absence of consensus definition of ARF led to significant confusion both in clinical practice and in the medical literature. In 2004, the Acute Dialysis Quality Initiative (ADQI) group published the RIFLE (Risk, Injury, Failure, Loss of kidney function and End-stage kidney disease) classification of ARF that helped in early detection of renal insult before progression to

Received 05/04/2017  
Review began 05/15/2017  
Review ended 05/18/2017  
Published 05/25/2017

© Copyright 2017  
Ismail Hassan et al. This is an open  
access article distributed under the terms  
of the Creative Commons Attribution  
License CC-BY 3.0., which permits  
unrestricted use, distribution, and  
reproduction in any medium, provided the  
original author and source are credited.

### How to cite this article

Ismail hassan K, Hodan m J, Li C (May 25, 2017) A Retrospective Study of Acute Renal Failure in Children: Its Incidence, Etiology, Complications and Prognosis. Cureus 9(5): e1274. DOI 10.7759/cureus.1274

ARF and thus reduced the morbidity and mortality. Moreover, the term acute kidney injury (AKI) was preferred rather than ARF and the criteria for AKI definition was formulated by the Acute Kidney Injury Network (AKIN) [7].

According to AKIN, the following criteria of an abrupt (within 48 hours) reduction in kidney functions are characterized by i) absolute increase in serum creatinine more than or equal to 0.3 mg/dl from baseline or ii) increase in serum creatinine more than or equal to 50% (1.5 fold from baseline) or iii) reduction in urine output (documented oliguria of less than 0.5 ml/kg / hour for more than six hours). But, in most of the cases, the baseline creatinine is not available. ARF may be non-oliguric or even polyuric in 10% to 15% of cases, which may lead to misdiagnosis on clinical assessment if we rely on daily urine volume only [8]. Due to the advancement in complex treatment strategy, children treated with acute and chronic illness associated with ARF may develop inexplicable complications. Hence, it is essential and critical to re-evaluate the incidence, etiology, presentation, complication and outcome in pediatric ARF which may further aid in revising the preventive strategies and implementing appropriate supportive care. Informed consent statement was obtained for this study.

## Materials And Methods

### Study area and population

The children aged 12 years or less, suffering from ARF symptoms were enrolled between December 2015 and November 2016 in pediatric medicine department of four tertiary care hospitals in Hargeisa and Borama cities in Somalia: Hargeisa Group Hospital and Garger Hospital in Hargeisa and Al-Hayat Hospital in Borama, and Emirates Hospital in Hargeisa. The subjects were included in this study based on the inclusion criteria of renal insufficiency characterized by serum creatinine level more than 1.5 mg/dl and were excluded showing the history of any previously reported renal disease. Distinct parameters were characterized such as parameters of incidence, etiology, presentation, complications and clinical outcome. The data collected from these cases were then analyzed.

### Clinical and laboratory investigations

All ARF patients in this study were examined clinically along with proper and complete history recording and subjected to laboratory investigations like serum levels of urea, creatinine, sodium, potassium, cholesterol, triglycerides and with complete blood count, routine and microscopic urinary examination. Other special investigations like ultrasonography (USG), antinuclear antibody (ANA), anti-double-stranded deoxyribonucleic acid (anti- dsDNA), anti-streptolysin O titer (ASO), complement component 3 (C3) level and kidney biopsy were performed whenever necessary.

### Study design

A prospective observational study was undertaken to evaluate the percentage of incidence of ARF among children hospitalized for all causes, the differential etiology of ARF, commonly presented clinical features, age, and sex ratio among children with ARF, and also to delineate the clinical complications and prognosis of treatment and management of cases.

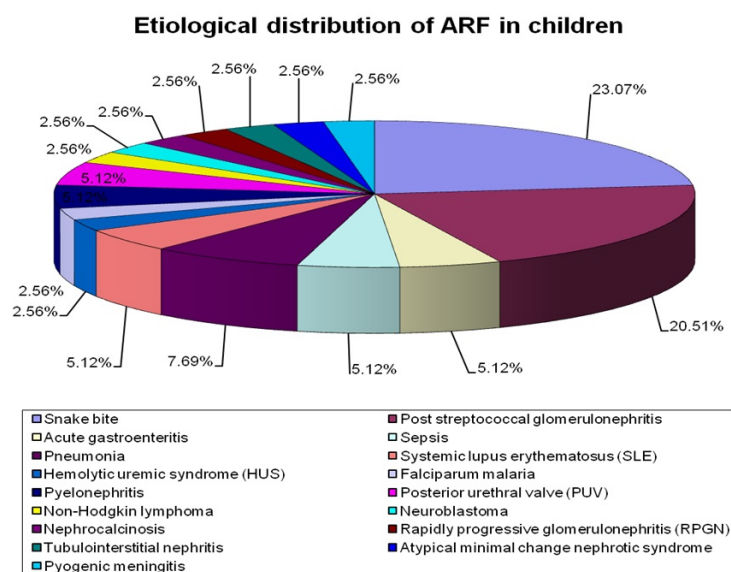
## Results

### Incidence ratio and etiological distribution of ARF in children

In the studied period, a total of 1520 children were admitted in pediatric medicine ward for the different illness and 39 cases were confirmed as ARF. Therefore, the incidence of ARF among hospitalized children in our hospitals was 2.6%. The most common cause of ARF in children in our study was snakebite (nine cases, 23%), followed by post-streptococcal glomerulonephritis (eight cases, 20.5%). Three cases were due to pneumonia and two cases each were due to gastroenteritis, sepsis, systemic lupus erythematosus (SLE), pyelonephritis and posterior urethral valve (PUV). Other cases were due to falciparum malaria, nephrocalcinosis, rapidly progressive glomerulonephritis, non-Hodgkin lymphoma, neuroblastoma, hemolytic uremic syndrome, pyogenic meningitis, atypical minimal change nephrotic syndrome and tubulointerstitial nephritis (Table 1-Figure 1).

| No. | Etiology of ARF                               | No. of cases | Percentage of total cases |
|-----|---|--------------|---------------------------|
| 1   | Snake Bite                                    | 9            | 23.07%                    |
| 2   | Post streptococcal glomerulonephritis         | 8            | 20.51%                    |
| 3   | Acute gastroenteritis                         | 2            | 5.12%                     |
| 4   | Sepsis  | 2            | 5.12%                     |
| 5   | Pneumonia                                     | 3            | 7.69%                     |
| 6   | Systemic lupus erythematosus (SLE)            | 2            | 5.12%                     |
| 7   | Hemolytic uremic syndrome (HUS)               | 1            | 2.56%                     |
| 8   | Falciparum malaria                            | 1            | 2.56%                     |
| 9   | Pyelonephritis                                | 2            | 5.12%                     |
| 10  | Posterior urethral valve (PUV)                | 2            | 5.12%                     |
| 11  | Non-Hodgkin lymphoma                          | 1            | 2.56%                     |
| 12  | Neuroblastoma                                 | 1            | 2.56%                     |
| 13  | Nephrocalcinosis                              | 1            | 2.56%                     |
| 14  | Rapidly progressive glomerulonephritis (RPGN) | 1            | 2.56%                     |
| 15  | Tubulointerstitial nephritis                  | 1            | 2.56%                     |
| 16  | Atypical minimal change nephrotic syndrome    | 1            | 2.56%                     |
| 17  | Pyogenic meningitis                           | 1            | 2.56%                     |

**TABLE 1: Etiological distribution of acute renal failure (ARF) among children**



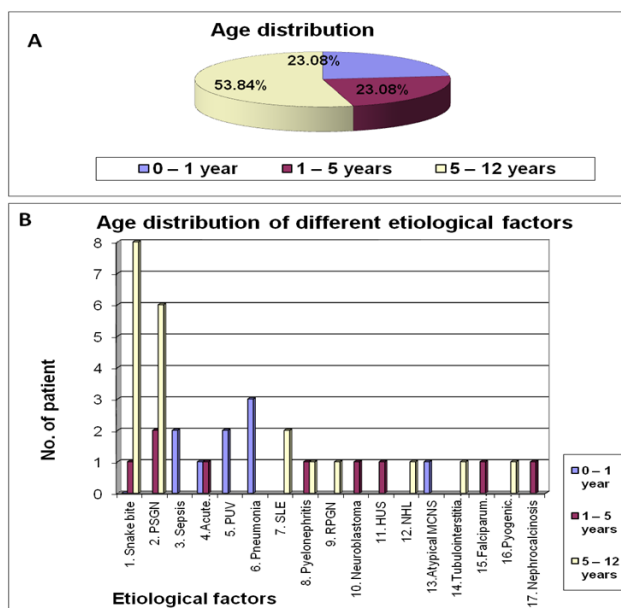
**FIGURE 1: Etiological distribution of acute renal failure among children**

**Age and sex distribution of different etiological factors**

According to the age distribution of cases, nine cases (23.08%) were admitted in zero to one year age group (age up to one year included). Similarly, nine cases (23.08%) were admitted in one to five years age group and 21 cases (53.84%) were admitted to five to 12 years age group (Table 2-Figure 2A-2B).

| Etiology   | 0 – 1 year | 1 – 5 years | 5 -12 years | Total |
|--|------------|-------------|-------------|-------|
| 1. Snake bite  | 0          | 1           | 8           | 9     |
| 2. PSGN  |            | 2           | 6           | 8     |
| 3. Sepsis  | 2          |             |             | 2     |
| 4. Acute gastroenteritis                               | 1          | 1           |             | 2     |
| 5. PUV   | 2          |             |             | 2     |
| 6. Pneumonia   | 3          |             |             | 3     |
| 7. SLE   |            |             | 2           | 2     |
| 8. Pyelonephritis                                      |            | 1           | 1           | 2     |
| 9. RPGN  |            |             | 1           | 1     |
| 10. Neuroblastoma                                      |            | 1           |             | 1     |
| 11. HUS  |            | 1           |             | 1     |
| 12. NHL  |            |             | 1           | 1     |
| 13. AtypicA typically change nephrotic syndrome (MCNS) | 1          |             |             | 1     |
| 14. Tubulointerstitial nephritis                       |            |             | 1           | 1     |
| 15. Falciparum malaria                                 |            | 1           |             | 1     |
| 16. Pyogenic meningitis                                |            |             | 1           | 1     |
| 17. Nephrocalcinosis                                   |            | 1           |             | 1     |
| Total  | 9 (23.08%) | 9 (23.08%)  | 21 (53.84%) |       |

**TABLE 2: Age distribution of different etiological factors**



**FIGURE 2: Age distribution of different etiological factors in acute renal failure patients**

Twenty-one cases (53.85%) were male and 18 cases (46.15%) were female children in our study with a male to female ratio of 1.2: 1. Most common cause of the ARF in the male patient was post-streptococcal glomerulonephritis (five case, 23.8%) followed by snakebite (four case, 19.04%), posterior urethral valve (two case, 9.52%) and one case each were due to ten others different etiologies (Table 3-Figure 3).

In female patients, most common cause was snakebite (five cases, 27.77%) followed by acute post-streptococcal glomerulonephritis (three cases, 16.66%), systemic lupus erythematosus (two cases, 11.11%),

pneumonia (two cases, 11.11%) and one case each were due to six other etiologies (Table 3). No case was due to hemolytic uremic syndrome, falciparum malaria, nephrocalcinosis, non-Hodgkin lymphoma (NHL), atypical minimal change nephrotic syndrome, tubulointerstitial disease, posterior urethral valve etc. Male and female patient in different etiological factor is depicted in Figure 3.

| No. | Etiology of ARF                               | No. of cases | Male | Female |
|-----|---|--------------|------|--------|
| 1   | Snake bite                                    | 9            | 4    | 5      |
| 2   | Poststreptococcal glomerulonephritis (PSGN)   | 8            | 5    | 3      |
| 3   | Acute gastroenteritis (AGE)                   | 2            | 1    | 1      |
| 4   | Sepsis  | 2            | 1    | 1      |
| 5   | Pneumonia                                     | 3            | 1    | 2      |
| 6   | Systemic lupus erythematosus (SLE)            | 2            | 0    | 2      |
| 7   | Hemolytic uremic syndrome (HUS)               | 1            | 1    | 0      |
| 8   | Falciparum malaria                            | 1            | 1    | 0      |
| 9   | Pyelonephritis                                | 2            | 1    | 1      |
| 10  | Posterior urethral valve (PUV)                | 2            | 2    | 0      |
| 11  | Non-Hodgkin lymphoma (NHL)                    | 1            | 1    | 0      |
| 12  | Neuroblastoma                                 | 1            | 0    | 1      |
| 13  | Nephrocalcinosis                              | 1            | 1    | 0      |
| 14  | Rapidly progressive glomerulonephritis (RPGN) | 1            | 0    | 1      |
| 15  | Tubulo interstitial nephritis (TIN)           | 1            | 1    | 0      |
| 16  | Atypical minimal change nephrotic syndrome    | 1            | 1    | 0      |
| 17  | Pyogenic meningitis                           | 1            | 0    | 1      |

TABLE 3: Sex distribution of etiological factors

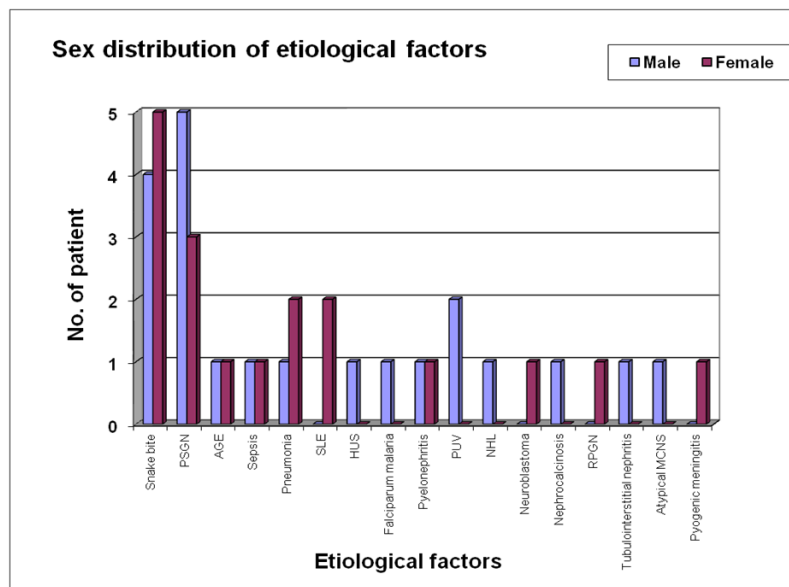


FIGURE 3: Sex distribution of different etiological factors in acute renal failure patients

The mean age of male patients was 6.12 years and for the female patient was 6.15 years. Therefore, in male and female cases, mean age was almost the same. The mean age of each etiological group is given in Table 4. Mean age in snakebite patients was 8.88 years, in post-streptococcal glomerulonephritis (PSGN) cases was 8.47 years and in systemic lupus erythematosus (SLE) was 12 years. So, all the three conditions were more

common in older children. On the other hand, mean age in sepsis was 5.5 month and in pneumonia was 3.5 months which were reported as the most common clinical conditions in small infants.

| No. | Etiology of ARF                               | Mean age   |
|-----|---|------------|
| 1   | Snake bite                                    | 8.88 years |
| 2   | Post streptococcal glomerulonephritis (PSGN)  | 8.47 years |
| 3   | Acute gastroenteritis (AGE)                   | 1.8 years  |
| 4   | Sepsis  | 5.5 months |
| 5   | Pneumonia                                     | 3.5 months |
| 6   | Systemic lupus erythematosus (SLE)            | 12 years   |
| 7   | Hemolytic uremic syndrome (HUS)               | 3 years    |
| 8   | Falciparum malaria                            | 4.5 years  |
| 9   | Pyelonephritis                                | 6 years    |
| 10  | Posterior urethral valve (PUV)                | 23.5 days  |
| 11  | Non-Hodgkin lymphoma (NHL)                    | 7 years    |
| 12  | Neuroblastoma                                 | 3 years    |
| 13  | Nephrocalcinosis                              | 2.5 years  |
| 14  | Rapidly progressive glomerulonephritis (RPGN) | 7 years    |
| 15  | Tubulointerstitial nephritis (TIN)            | 10 years   |
| 16  | Atypical minimal change nephrotic syndrome    | 1 year     |
| 17  | Pyogenic meningitis                           | 10 years   |

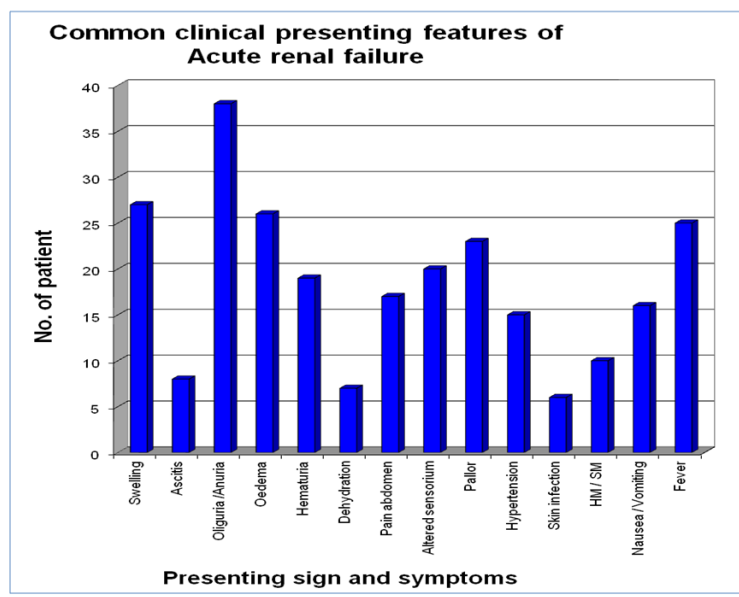
**TABLE 4: Mean age in different etiological groups**

### Clinical presentation of the patients

In this study, the most common presenting symptom was oliguria (38 cases, 97.43%). Oliguria was present in all cases except one, which was the non-oliguric renal failure due to tubulointerstitial nephritis. Other common presenting symptoms were swelling (27 cases, 69.23%), fever (25 cases, 64.10%), abdomen pain (17 cases, 43.58%), nausea or vomiting (16 cases, 41.02%). Common presenting clinical signs were edema (26 cases, 66.66%), altered sensorium (20 cases, 51.28%), hematuria (19 cases, 47.1%), hypertension (15 cases, 38.46%), hepato-splenomegaly (10 cases, 25.64%) and others. Different presentation of ARF is given in Table 5 and graphically depicted in Figure 4.

| No.   | Etiology                     | Swelling | Ascitis | Oliguria /Anuria | Oedema | Hematuria | Dehydration | Pain abdomen | Altered sensorium | Pallor | Hypertension | Skin infection | Hepatomegaly (HM) / Splenomegaly (SM) |
|-------|------------------------------|----------|---------|------------------|--------|-----------|-------------|--------------|-------------------|--------|--------------|----------------|---------------------------------------|
| 1     | Sepsis                       | -        | -       | 2                | -      | -         | 2           |              | 2                 | 2      | -            |                |                                       |
| 2     | PSGN                         | 8        | 3       | 8                | 8      | 7         |             | 1            | 1                 | 3      | 7            | 4              | 3                                     |
| 3     | Acute gastroenteritis        |          |         | 2                |        |           | 2           | 2            | 2                 | -      | -            | -              | -                                     |
| 4     | PUV                          |          |         | 2                | -      | 1         | -           | -            | 2                 | -      | -            | -              |                                       |
| 5     | SLE                          | 1        | 1       | 2                | 1      | 8         |             | 2            |                   | 2      |              | 1              | 2                                     |
| 6     | Snake bite                   | 9        |         | 9                | 9      | -         |             | 5            | 7                 | 6      | 1            | 1              | 1                                     |
| 7     | RPGN                         | 1        | 1       | 1                | 1      | -         | -           | -            | -                 | 1      | 1            | -              | 1                                     |
| 8     | Tubulointerstitial nephritis | 1        |         | -                | 1      | -         | -           | -            | -                 | 1      | -            | -              | -                                     |
| 9     | Atypical MCNS                | 1        | 1       | 1                | 1      | -         | -           | 1            | -                 | -      | 1            | -              | -                                     |
| 10    | Pyogenic meningitis          | -        | -       | 1                | -      | -         | 1           | -            | 1                 | -      | -            | -              | -                                     |
| 11    | Pneumonia                    | -        | -       | 3                | -      | -         | 2           | -            | 1                 | 2      | -            | -              | -                                     |
| 12    | HUS                          | 1        | -       | 1                | 1      | 1         | -           | 1            | 1                 | 1      | -            | -              | 1                                     |
| 13    | NHL                          | 1        | -       | 1                | 1      | -         | -           | 1            | 1                 | 1      | 1            | -              | -                                     |
| 14    | Nephrocalcinosis             | 1        | 1       | 1                | 1      | -         | -           | 1            | 1                 | 1      | -            | -              | -                                     |
| 15    | Neuroblastoma                | 1        | -       | 1                | 1      | -         | -           | 1            | -                 | 1      | 1            | -              | -                                     |
| 16    | Falciparum malaria           | -        | -       | 1                | -      | 1         | -           | -            | 1                 | 1      | 1            | -              | 1                                     |
| 17    | Pyelonephritis               | 2        | 1       | 2                | 1      | 1         | -           | 2            | -                 | 1      | 2            |                | 1                                     |
| Total |                              | 27       | 8       | 38               | 26     | 19        | 7           | 17           | 20                | 23     | 15           | 6              | 10                                    |

**TABLE 5: Presentation of acute renal failure (ARF)**

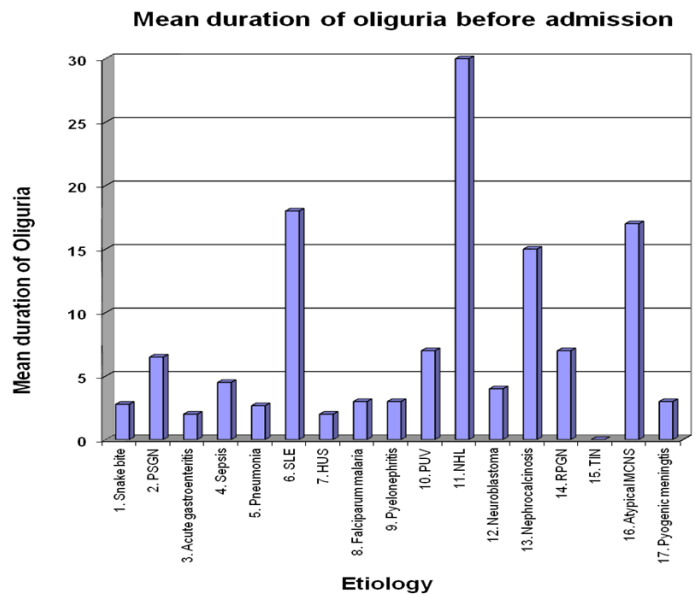


**FIGURE 4: Common clinical presenting features of acute renal failure in patients**

Mean duration of oliguria was less than 10 days in most etiological cases. Mean oliguria for more than 10 days was present in three etiological groups. A typical minimal change nephrotic patients had oliguria for 17 days. Mean oliguria of two SLE patients was 18 days. The non-Hodgkin lymphoma (NHL) child had oliguria for one month (Table 6-Figure 5).

| Etiology                               | Mean Duration of Oliguria |
|--|---------------------------|
| 1. Snake bite                          | 2.78 days                 |
| 2. PSGN                                | 6.5 days                  |
| 3. Acute gastroenteritis               | 2 days                    |
| 4. Sepsis                              | 4.5 days                  |
| 5. Pneumonia                           | 2.67 days                 |
| 6. SLE                                 | 18 days                   |
| 7. HUS                                 | 2 days                    |
| 8. Falciparum malaria                  | 3 days                    |
| 9. Pyelonephritis                      | 3 days                    |
| 10. PUV                                | 7 days                    |
| 11. NHL                                | 30 days                   |
| 12. Neuroblastoma                      | 4 days                    |
| 13. Nephrocalcinosis                   | 15 days                   |
| 14. RPGN                               | 7 days                    |
| 15. Tubulointerstitial nephritis (TIN) | No oliguria               |
| 16. Atypical MCNS                      | 17 days                   |
| 17. Pyogenic meningitis                | 3 days                    |

**TABLE 6: Duration of oliguria before admission**



**FIGURE 5: Mean duration of oliguria before admission in acute renal failure patients**

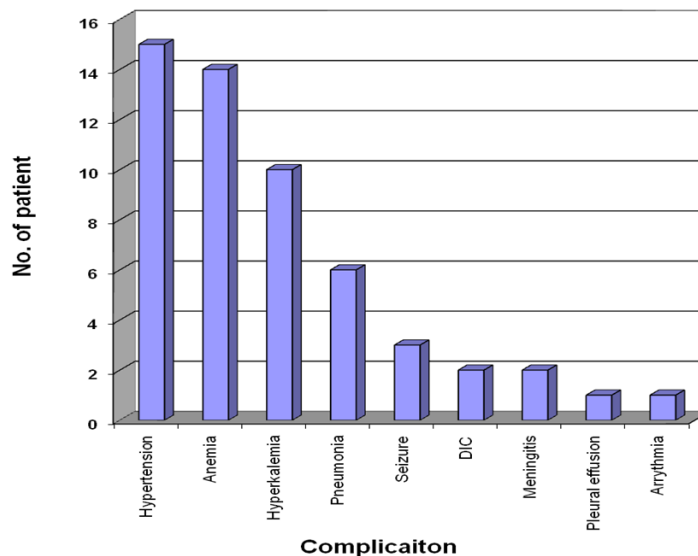
**Complication in the course of acute ARF in patients**

The most common complications among all during the course of acute illness from ARF in the children was



hypertension (15 cases, 53.6%). Other complications reported were anemia (14 cases, 50%), hyperkalemia (10 cases, 35.71%), pneumonia (six cases, 21.42%), seizure (three cases, 10.71%), disseminated intravascular coagulation (DIC) (7.14%), meningitis (two cases, 7.14%), arrhythmia (one case, 3.57%) and pleural effusion (3.57%). Eleven cases were reported without any complications (Figure 6).

**Complication observed among ARF in children**



**FIGURE 6: Complications in acute renal failure patients**

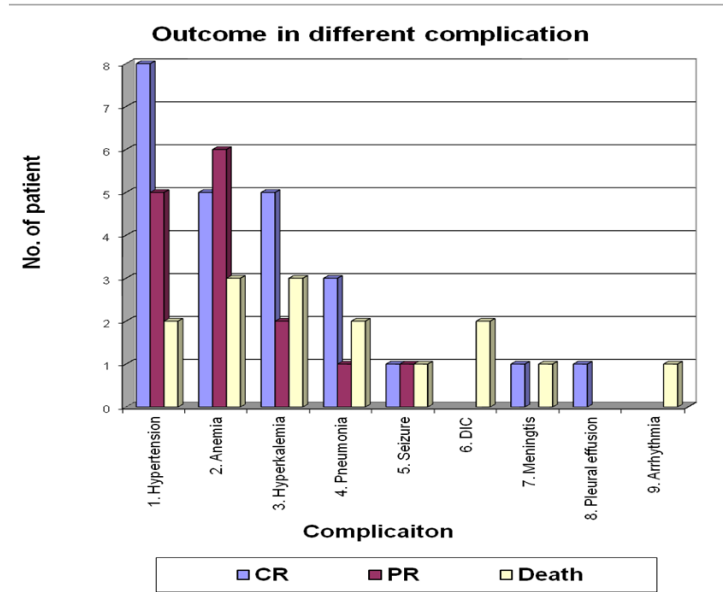
**Outcome of clinical complications in patients**

Among the children, who developed hypertension as a complication, 53.3% recovered completely, 33.3% recovered partially and 13.3% died. Anemia was common in the partially recovered group (42.85%). Among the 14 cases that developed anemia as a complication, five patients (35.7%) completely recovered and three cases (21.4%) died. Hyperkalemia developed in 10 cases of ARF. Fifty percent of hyperkalemia patient completely recovered, three patients (30%) died and two patients (20%) partially recovered. Two patients developed disseminated intravascular coagulation (DIC) and both of them died. Of the various infective complications, six patients (75%) developed pneumonia and two patients developed meningitis (25%). Other complications in ARF patient and their outcome are given in Table 7-Figure 7.

| Complication        | CR        | PR         | Death     | Total |
|---------------------|-----------|------------|-----------|-------|
| 1. Hypertension     | 8 (53.3%) | 5 (33.3%)  | 2 (13.3%) | 15    |
| 2. Anemia           | 5 (35.7%) | 6 (42.85%) | 3 (21.4%) | 14    |
| 3. Hyparkalemia     | 5 (50%)   | 2 (20%)    | 3 (30%)   | 10    |
| 4. Pneumonia        | 3 (50%)   | 1 (16.6%)  | 2 (33.3%) | 6     |
| 5. Seizure          | 1 (33.3%) | 1 (33.3%)  | 1 (33.3%) | 3     |
| 6. DIC              | -         | -          | 2 (100%)  | 2     |
| 7. Meningitis       | 1 (50%)   | -          | 1 (50%)   | 2     |
| 8. Pleural effusion | 1 (100%)  | -          | -         | 1     |
| 9. Arrhythmia       | -         | -          | 1 (100%)  | 1     |

**TABLE 7: Outcome in different complications**

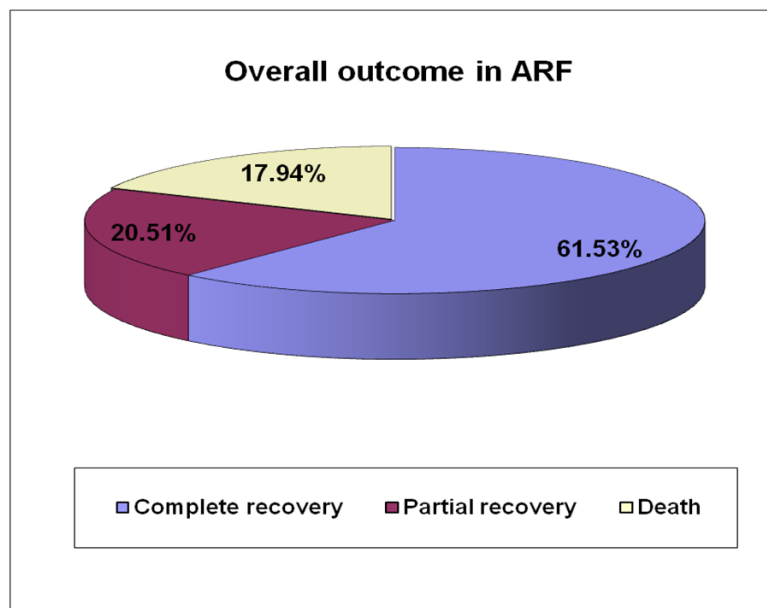
CR- complete recovery. PR- partial recovery.



**FIGURE 7: Outcome of different complications in acute renal failure patients**

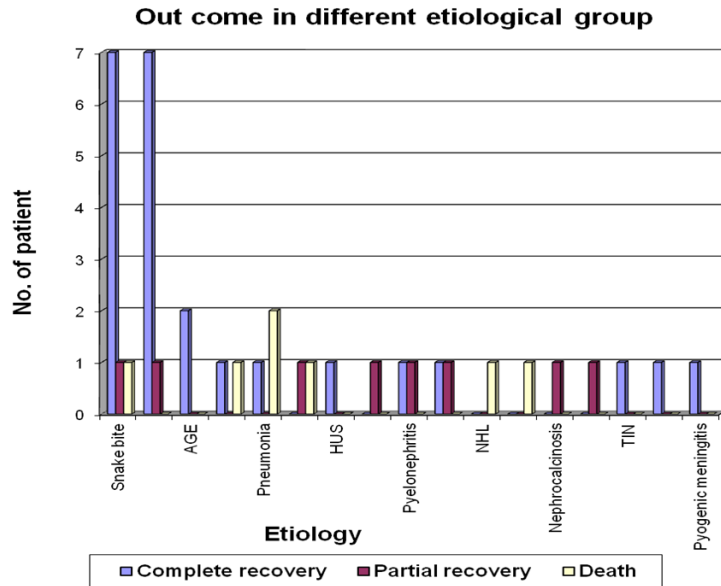
**Prognosis of treatment and follow-up of patients**

A total 39 cases were included and follow up has been done for a short period of two weeks. Among them, 24 cases (61.53%) recovered from ARF completely, and eight cases (20.51%) recovered partially with some persistent biochemical abnormality during discharge and follow-up. Unfortunately, seven cases died during their acute stage (17.94%) of disease (Figure 8).



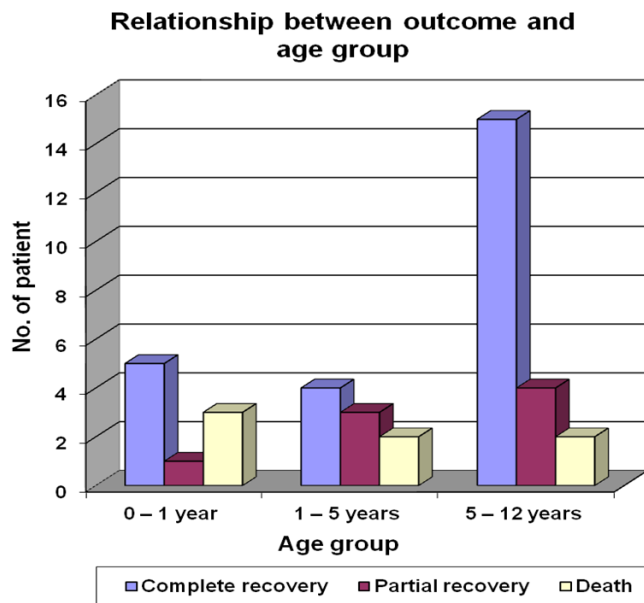
**FIGURE 8: Overall outcome in acute renal failure cases**

Out of total nine cases in snake envenomation group, seven cases (77.8%) recovered fully, one patient (11.1%) died during acute phase due to DIC and another one child (11.1%) had persistent biochemical abnormality during follow-up. Among the total eight cases of acute renal failure following PSGN, seven patients (87.5%) recovered completely. One child (12.5%) in this group however had persistent biochemical abnormality, though the child was improving until the last follow-up visit. No patient died in this group (Figure 9).



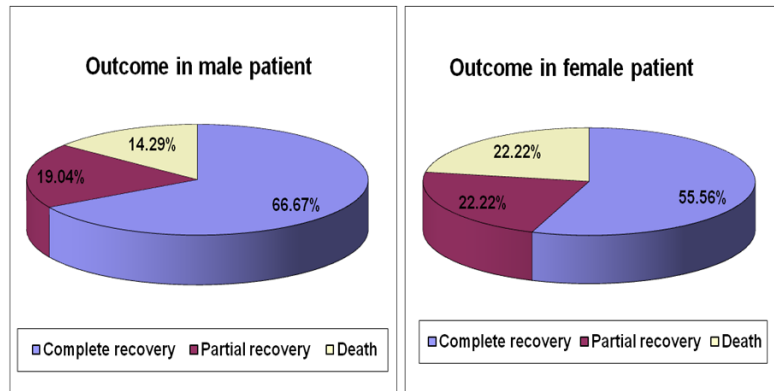
**FIGURE 9: Outcome of complications of acute renal failure in different etiological group**

The outcome in the different age group is depicted in Figure 10. Out of total nine patients in zero to one year's age group, five (55.5%) infants recovered completely, three (33.3%) cases died and one case (11.11%) had a partial recovery. Of the nine children in one to five years age group, four cases (44.4%) had the complete recovery, three cases (33.3%) had partial recovery and two cases (22.2%) died. Among the five to 12 years group, 15 cases (71.4%) recovered completely, four cases (19.04%) had the persistent biochemical abnormality and two cases (9.52%) died.



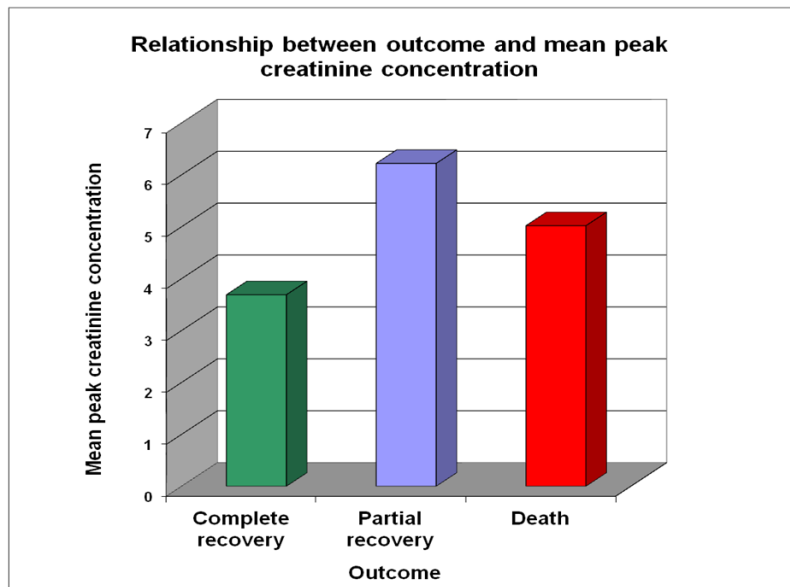
**FIGURE 10: Relationship between outcome and age group in acute renal failure patients**

The outcome in different sex group is given in Figure 11. Out of total 21 male children, 14 cases (66.67%) recovered completely, four cases (19.04%) had partial recovery and three patients died. Among the 18 female children with ARF, ten cases (55.56%) had a complete recovery, four cases (22.22%) had partial recovery and four cases (22.22%) died.



**FIGURE 11: Outcome of acute renal failure in different sex group**

The relationship between outcome and mean peak creatinine concentration during acute illness is given in Figure 12. In completely recovered group (24 cases), the mean peak creatinine concentration was 3.69 mg/dL. In partially recovered group (eight cases), the mean peak creatinine concentration was 6.22 mg/dL and in patients who died, mean peak creatinine concentration was 5.02 mg/dL.



**FIGURE 12: Relationship between outcome and mean creatinine concentration**

Out of 24 cases in the completely recovered group, 14 cases (58.3%) had one or more complications. Among the seven patients, who died during their acute illness, six cases (85.7%) had complications and all the patients (100%) in the partially recovered group had some complications.

### Discussion

ARF is not uncommon in a pediatric population and has significant morbidity and mortality. The emphasis on presentation remains cardinal, but early detection and appropriate treatment can also provide complete recovery in a large proportion of ARF in children, which is the major goal of ARF therapy. The incidence of ARF in NICUs reported in some previous studies ranges from 6% to 24% of newborns [9]. Although the precise incidence of acute renal failure in children is unknown, studies suggest that the incidence of acute renal failure in hospitalized children may be increasing [10]. In a 22 years study conducted [11], the incidence

rate of ARF among children admitted to hospital has dramatically increased from 0.5 – 3.3 cases for 1000 cases before 1995 to 4.6- 9.9 cases per 1000 after 1995. Even though other studies reported an incidence rate less than 1% in 2000 [12], our study showed a higher value of 2.6%, which may be due to the fact that our hospitals are tertiary care hospital and had the facility of renal replacement therapy.

In this study, out of total 39 cases, 21 cases were males and 18 cases were females, and the male-female ratio (M: F) was 1.2:1. This male preponderance was in consistent with previous studies, where always a higher incidence in males was reported [13-17]. ARF in children was most commonly found in five to 12 years age group (53.8%). Infant (zero to one year) and pre-school (one to five years) children contributed 23.08% each separately. Mean age of presentation was 6.14 years, which was in consistent with previously reported studies [14, 16- 17]. The youngest case in our study was a 12-day old newborn male presented with ARF due to PUV. Three children presented at the age of 12 years, two of them had SLE (both female) and the third one, a male child had ARF due to snake envenomation.

Most common cause of ARF in this study was snake envenomation (23.07%) followed by acute post-streptococcal glomerulonephritis (20.5%). Other causes included pneumonia (7.7%), SLE (5.1%), PUV (5.1%), acute gastroenteritis (AGE) (5.1%), hemolytic uremic syndrome HUS (2.6%) etc. In developing countries, volume depletion from diarrhea continues to be the most common cause of ARF [18]. Few previously published studies reported that the most commonly observed cause of ARF was hypovolemia associated mostly with either diarrhea or with HUS [15, 19]. But in the present study, we found only two cases of AGE resulting in 5.1% of ARF among the total 39 cases, which is far lower than the above-mentioned previous reports. This discrepancy may be due to the fact that, all previous studies were reported more than two decade before when the oral rehydration solution (ORS) therapy had not started or was in its nascent stage. As the awareness of ORS therapy from the early stage of diarrhea increased and after our National Diarrhea Control Program (NDCP) launched, there was a drastic decrease in the incidence of diarrhea with severe dehydration.

HUS was one of the common etiologies of ARF in children in many previous studies (12% to 24%), along with acute tubular necrosis and glomerulonephritis [13, 20]. In contrast to their reports, in our study, we found only one case (2.56%) of HUS leading to ARF in our study. This discrepancy could be due to the fact that, HUS is more commonly associated with *Escherichia coli* in developed countries and *Shigella dysenteriae* type 1 in developing country. So HUS is more common during the epidemic outbreak of diarrhea due to these organisms. Moreover, a seasonal variation and genetic difference in susceptibility of HUS are also reported in different ethnic groups. Another reason may be that prognosis among HUS is good and most post-diarrheal HUS recovered only by supportive therapy. As diarrheal cases are usually not referred to our hospital frequently and the large proportion of HUS induced mild renal dysfunction and are not recognized in most cases at peripheral level due to lack of familiarity with this etiology, many cases of HUS induced mild ARF are overlooked.

Snake envenomation has contributed a substantial bulk to the etiology of ARF and has been shown in other tropical countries like Asia and Africa [21-23]. In our study, snake bite was the most common etiology accounting for 23.07% of all cases of ARF and was most frequently seen in five-12 years age group (eight out of nine cases). In our country, Hawd region has the highest incidence of snake bite cases [24] and children as the common victims with an incidence rate of 7% to 22% [25-27]. Though ARF is a well-known complication of snakebite among children, snake envenomation has not frequently been mentioned as the major cause of ARF in children. As this study is done in a region where the incidence of snake bite is very high and most of the peripheral centers have the scarcity of snake anti-venom serum, patients often do not get adequate treatment. On the other hand, like most developing countries, a large proportion of rural cases first consult a traditional practitioner before visiting a medical center, which further enhances the chances of developing ARF due to delay in treatment. Lastly, most of the snake bite cases with ARF complications from peripheral centers are referred to our institution for dialysis and better management. Probably, all these factors are responsible for this large proportion case of ARF due to snake envenomation in our study.

The second most common etiological factor responsible for ARF in this study was acute post-streptococcal glomerulonephritis (APSGN), which contributed 20.5% and was in consistent with previous reports [15]. In our study, among the APSGN group, male were slightly predominant than female cases and most (75%) cases were in the five to 12 years age group, which is similar to a study conducted by Vachvanichsanong, et al. (71% in five to 13 year age group) [11], 87.5% cases recovered completely and only one patient had persistent renal dysfunction without any mortality.

Overall outcome in our study has been recorded in three categories as completely recovered, partially recovered (with some persistent clinical or biochemical abnormality) or the patient died during the acute stage of the disease. The overall mortality in our study (17.9%) was lower than many previously published reports [17, 28]. Although mortality depends mainly on the etiology, other factors such as study population, the age of patient, medical and dialysis facility also influenced the mortality rate. A large proportion of cases were due to APSGN (20.5%), which showed 100% survival rate, further contributed to lower mortality in our study. Contrarily, a short follow-up period of cases might have resulted in a low mortality recording, because partially recovered cases may ultimately develop the end-stage renal disease in long-term follow-up and died if transplantation not done.

Mortality in infants (zero to one year age group) was higher (33.3%) than the other two groups (22.2% in partially recovered cases and 9.5% in five to 12 years age group), which was consistent with other studies [29]. Mortality in the female child was slightly higher than the male child (14.3%). Similarly, mortality was higher in patients who had higher mean peak creatinine concentrations (6.22 mg/dl in the partially recovered group and 5.02 mg/dl in death group) and in children who developed complications during their hospital stay. Mortality was very high in children who had complications like DIC (100%), arrhythmia (100%), seizure (33.3%) and pneumonia (33.3%).

## Conclusions

The precise incidence of acute renal failure in the pediatric patient is difficult to define, as it largely depends on the referral patterns, proximity to pediatric renal unit and expertise within the unit. It also depends on the population studied and the geographic location of the study. A large number of pediatric patients in our country, mainly from rural areas are not adequately managed because of poverty and lack of facilities for dialysis. Many causes of ARF in our environment are preventable and it should be possible to reduce mortality and morbidity due to ARF through purposive preventive measure and availability of the better medical facility.

Our study was comparatively of short duration with the small number of cases. The follow-up was done for a very short period of time. Therefore, it was very difficult to conclude an incidence, long-term mortality, morbidity and other variables from the present study. So, it is essential to conduct a large multi-centric long-term follow-up assessment of children's clinical condition and renal function study.

## Additional Information

### Disclosures

**Animal subjects:** This study did not involve animal subjects or tissue. **Human subjects:** Consent was obtained by all participants in this study.

### Acknowledgements

The authors wish to sincerely appreciate the invaluable help from Dr. Jama Hodan M and her team of pediatricians and nephrologists and other specialty doctors working in all the four referral hospitals for assisting in the collection of patient clinical information and correlating with their clinical conditions and timely help in explaining the details.

## References

1. Stewart CL, Barnett R.: Acute renal failure in infants, children and adults. *Crit Care Clin.* 1997, 13:575-590.
2. Stapleton FB, Jones DP, Green RS: Acute renal failure in neonates: incidence, etiology and outcome. *Pediatr Nephrol.* 1987, 1:314-320.
3. Hui-Stickle S, Brewer ED, Goldstein SL: Pediatric ARF epidemiology at a tertiary care center from 1999 to 2001. *Am J Kidney Dis.* 2005, 45:96-101.
4. Bunchman TE, McBryde KD, Mottes TE, et al.: Pediatric acute renal failure: outcome by modality and disease. *Pediatr Nephrol.* 2001, 16:1067-1071.
5. Arora P, Kher V, Rai PK, et al.: Prognosis of acute renal failure in children: a multivariate analysis. *Pediatr Nephrol.* 1997, 11:153-155.
6. Wilkinson JD, Pollack MM, Ruttimann UE, et al.: Outcome of pediatric patients with multiple organ system failure. *Crit Care Med.* 1986, 14:271-274.
7. Mehta RL, Kellum JA, Shah SV, et al.: Acute Kidney Injury Network: report of an initiative to improve outcomes in acute kidney injury. *Crit Care.* 2007, 11:31.
8. Stapleton FB, Jones DP, Green RS: Acute renal failure in neonates: incidence, etiology and outcome. *Pediatr Nephrol.* 1987, 1:314-320.
9. Andreoli SP: Acute renal failure in the newborn. *Semin Perinatol.* 2004, 28:112-123.
10. Andreoli SP: Clinical Evaluation of Acute Kidney Injury in Children. *Pediatric Nephrology.* Avner E D, Harmon W E, Niaudet P, Yoshikawa N (ed): Springer Publishers, Berlin Heidelberg; 2009. 24:1603-1618.
11. Vachvanichsanong P, Dissaneewate P, Lim A, et al.: Childhood acute renal failure: 22-year experience in a university hospital in southern Thailand. *Pediatrics.* 2006, 118:786-791.
12. Assounga AG, Assambo-Kieli C, Mafoua A, et al.: Etiology and outcome of acute renal failure in children in congo-brazzaville. *Saudi J Kidney Dis Transpl.* 2000, 11:40-43.
13. A Ali, N. Mohammad, S. Z. Akhtar, et al.: Pediatric acute renal failure in frontier province. *J Postgrad Med Inst.* 2004, 18:308- 315.
14. Anochie IC, Eke FU: Acute renal failure in Nigerian children: Port Harcourt experience. *Pediatr Nephrol.* 2005, 20:1610-1614.
15. Kandoth PW, Agarwal GJ, Dharnidharka VR: Acute renal failure in children requiring dialysis therapy. *Indian Pediatr.* 1994, 31:305-309.
16. Olowu WA, Adelusola KA: Pediatric acute renal failure in southwestern Nigeria. *Kidney Int.* 2004, 66:1541-1548.
17. Bourquia A, Chakib F, Jennah A, et al.: Acute renal failure in moroccan children. *Saudi J Kidney Dis Transpl.* 2002, 13:66-70.
18. Barletta GM, Bunchman TE: Acute renal failure in children and infants. *Curr Opin Crit Care.* 2004, 10:499-504.
19. Choudhry VP, Srivastava RN, Vellodi A, et al.: A study of acute renal failure. *Indian Pediatr.* 1980, 17:405-410.
20. Srivastava RN, Bagga A: Hemolytic uremic syndrome: recent developments. *Indian Pediatr.* 1992, 29:11-24.
21. Chugh KS, Pal Y, Chakravarty RN, et al.: Acute renal failure following poisonous snakebite. *Am J Kidney Dis.* 1984, 4:30-38.
22. Chatterjee SC: Management of snake bite cases. *J Indian Med Assoc.* 1965, 45:654-659.
23. Reid HA, Theakston RD: The management of snake bite. *Bull World Health Organ.* 1983, 61:885-895.
24. Philip E: Snake bites and scorpion sting. *Indian Pediatr.* 1986, 23:181-188.
25. Gutierrez JM, Theakston RD, Warrell DA: Confronting the neglected problem of snakebite envenoming: the need for a global partnership. *PLoS Med.* 2006, 3:150.
26. Tekin R, Sula B, Cakir G, et al.: Comparison of snakebite cases in children and adults. *Eur Rev Med Pharmacol Sci.* 2015, 19:2711-2716.
27. Mittal BV: Acute renal failure following poisonous snake bite. *J Postgrad Med.* 1994, 40:123-126.
28. Kleinknecht D, Jungers P, Charad J, et al.: Factors influencing immediate prognosis in acute renal failure, with special reference to prophylactic hemodialysis. *Adv Nephrol Necker Hosp.* 1971, 1:207-230.
29. Shaheen IS, Watson AR, Harvey B: Acute renal failure in children: etiology, treatment and outcome. *Saudi J Kidney Dis Transpl.* 2006, 17:153-158.