

RESEARCH ARTICLE

Open Access



# Glucocorticoid induced adrenal insufficiency is common in steroid treated glomerular diseases - proposed strategy for screening and management

Alvin H. K. Karangizi<sup>1,2</sup>, May Al-Shaghana<sup>2</sup>, Sarah Logan<sup>2</sup>, Sherwin Criseno<sup>3</sup>, Rachel Webster<sup>4</sup>, Kristien Boelaert<sup>3,5</sup>, Peter Hewins<sup>2</sup> and Lorraine Harper<sup>1,2\*</sup>

## Abstract

**Background:** Glucocorticoids (GCs) are frequently used to treat glomerular diseases but are associated with multiple adverse effects including hypothalamic-pituitary-adrenal axis inhibition that can lead to adrenal insufficiency (AI) on withdrawal. There is no agreed GC tapering strategy to minimise this risk.

**Methods:** This is a single centre retrospective study, between 2013 to 2016, of patients with glomerular disease on GC therapy for more than 3 months screened for GC induced AI with short synacthen stimulation tests (SSTs) done prior to complete GC withdrawal. We investigated the prevalence of AI, predictors, choice of screening tool and recovery.

**Results:** Biochemical evidence of GC induced AI was found in 57 (46.3%) patients. Total duration of GC did not differ between those with and without AI ( $p = 0.711$ ). Patients with GC induced AI had a significantly lower pre-synacthen baseline cortisol as compared to patients without AI. A cut off pre-synacthen baseline cortisol of  $\geq 223.5$  nmol/l had a specificity of 100% for identifying individuals without biochemical AI. Patients with GC induced AI took a mean of  $8.7 \pm 4.6$  months (mean  $\pm$  SD) to recover. Patients with persistent AI had a significantly lower index post-synacthen cortisol measurement.

**Conclusions:** We demonstrate that biochemically proven GC induced AI is common in patients with glomerular diseases, is not predicted by daily dose or duration and takes a considerable time to recover. The study supports the use of morning basal cortisol testing as an appropriate means to avoid the need for SSTs in all patients and should be performed in all patients prior to consideration of GC withdrawal after 3 months duration.

**Keywords:** Steroids, Medication, Screening, Renal disease, Cortisol, Short synacthen test, Adrenal insufficiency

## Background

Glucocorticoids (GCs) are a widely used and effective treatment for glomerular diseases such as lupus nephritis, ANCA associated vasculitis and primary glomerular diseases. GCs are effective in managing these conditions but are associated with significant adverse effects such as weight gain, diabetes mellitus, stomach ulceration,

gastrointestinal bleeding, infection and osteoporosis. To minimise these risks, maintenance doses are generally kept as low as possible and cessation is considered in patients in stable remission [1].

GCs inhibit the hypothalamic-pituitary-adrenal (HPA) axis through negative feedback. Chronic inhibition can result in adrenal insufficiency (AI) which is unmasked on withdrawal. This can be serious and potentially life threatening as patients are unable to mount an adequate cortisol stress response. The prevalence of AI after oral administration of corticosteroids is common with estimates ranging from 14 to 63% [2]. The dose and duration related

\* Correspondence: [l.harper@bham.ac.uk](mailto:l.harper@bham.ac.uk)

<sup>1</sup>Institute of Clinical Sciences, College of Medical and Dental Sciences, University of Birmingham, Birmingham B15 2TT, UK

<sup>2</sup>Department of Renal Medicine, Queen Elizabeth Hospital Birmingham, University Hospitals Birmingham NHS Trust, Birmingham B15 2TH, UK  
Full list of author information is available at the end of the article



threshold for developing AI is unclear. Studies show a relationship between dose and duration of therapy, however this has not been replicated in all studies and AI may develop in those perceived to be at low risk with total cumulative doses of Prednisolone less than 500 mg and duration of therapy less than 4 weeks [2]. There are no evidence-based guidelines to support current practice on tapering of GCs [1]. Clinical practice in most centres is to gradually taper the dose of prednisolone with the expectation that this will enable adrenal recovery. To the contrary, a recent systematic review showed that adrenal suppression can persist after withdrawal with an absolute risk of 25.3% (CI 19.4 to 32.3%) at 6 months post cessation [3].

Existing literature is conflicting regarding strategies to mitigate this risk with some suggesting the need for a low index of suspicion to test patients following withdrawal and others advising switching to hydrocortisone during tapering [1, 3]. In order to minimise the risk of AI following steroid withdrawal, we adopted the approach of screening patients with a short synacthen stimulation test (SST) prior to GC withdrawal. We have now audited this practice to investigate its value in terms of, identifying prevalence of biochemical AI, recovery and screening tool choice. To the best of our knowledge, no previous studies have specifically investigated GC induced AI in glomerular disease.

## Methods

### Study design, settings and participants

This was a single-centre retrospective observational service evaluation carried out in the Renal Department at the Queen Elizabeth Hospital, Birmingham, UK. Patients were identified using data log of all SSTs carried out by our Kidney Assessment Team over a 3 year time period, between September 2013 and September 2016. We included all patients taking Prednisolone, for longer than 3 months, for glomerular disease who were screened for AI prior to intended complete withdrawal from GCs. We excluded patients on GCs for indications other than glomerular disease, and patients who had SSTs performed for indications other than planned GC withdrawal. This study received approval from the clinical audit department at the Queen Elizabeth Hospital Birmingham, UK in 2014 (Audit Code: CARMS-11451).

We collected data on patient age, sex, renal diagnosis, date of diagnosis, date when GC commenced, highest recorded dose of Prednisolone, use or non-use of Methylprednisolone on induction, Prednisolone dose at time of SST, duration of Prednisolone use, concurrent inhaled or topical GC use, SST result, time to retest and time to and result of subsequent SSTs where necessary. Data was collected from our electronic medical record system of test results and clinic letters.

### Adrenal insufficiency definition and assay

Adrenal function was assessed by a Short Synacthen stimulation Test (SST) performed between 08:30 am and 10:00 am after an overnight fast and 24 h Prednisolone pause. Cortisol levels were measured before and 30 min after a bolus of 250 µg tetracosactide (Synacthen, *Ciba-Geigy*) administered intramuscularly. Tetracosactide is a synthesized polypeptide with an amino acid sequence including 1 to 24 of the 1 to 39 chain of the naturally occurring corticotropin. It has adrenocortical stimulatory action similar to that of natural corticotropin [4]. It has previously been established that the 30-min cortisol level is used as the criterion to define adequate or inadequate adrenal cortisol reserve, and is the standard by which decisions are made to instigate (or terminate) glucocorticoid replacement [5]. The 30-min cortisol level provides reliable measure of adrenal function on the day of the test and whether this is adequate or not [5–7]. All synacthen tests were performed in the University Hospitals Birmingham NHS foundation Trust by trained nurses and the samples were analysed in the Biochemistry Laboratories. During the initial data collection period, our laboratory used the *Roche cobas e602 Gen 1 competitive immunoassay* which had a 30 min pass SST cut-off of cortisol  $\geq 550$  nmol/l derived using an in-house study of 100 healthy subjects. In January 2016 there was a switch to a new assay, *Roche cobas e602 Gen 2 competitive immunoassay*, due to restandardisation with cortisol mass spectrometry methodology and data quality assurance schemes to align more closely to reference material. The Gen 2 assay was shown to have a – 18.25% negative bias and the 30 min SST pass cut-off was changed to  $\geq 450$  nmol/l to reflect this. Following the change, an internal audit was performed to assess the number of failed SSTs following the assay change. There was no significant difference before or after. As of mid-2017 (because of a shortage of Synacthen supply), the endocrine department now recommends a morning 9 am basal cortisol as the baseline screening tool for adrenal insufficiency with an adequate cortisol defined as  $\geq 350$  nmol/l. Patients with a cortisol measurement of  $< 350$  nmol/l require a SST to confirm adrenal function. Basal ACTH was not measured in this study.

### Follow-up process

Patients who failed the SST were diagnosed with biochemical AI and referred for review by an endocrine specialist nurse. They were switched to hydrocortisone, a short-acting synthetic glucocorticoid dosed at 10 mg in the morning and 5 mg in the evening to try to mimic endogenous cortisol production. Patients were educated on sick day rules including the need to double their doses in times of illness. They were then retested at 6 months, with hydrocortisone withheld on the morning of the synacthen test. Patients were retested at 6 monthly intervals until recovery.

### Statistical analysis

Data are presented as mean  $\pm$  standard deviation for parametric variables and median (interquartile range) for non-parametric variables. Categorical variables have been expressed as counts (percentage). Between groups comparisons were performed using Mann Whitney U test, t-test or Chi squared test as appropriate. A receiver-operating characteristic (ROC) curve was performed to compute the sensitivity and specificity of the pre-synacthen baseline cortisol in predicting the outcome of the SST test. Statistical analysis has been performed using GraphPad Prism Version 5.00 (for Windows, 2007) and SPSS version 22 (IBM Corp, 2013).

## Results

### Patient characteristics

One hundred and twenty three patients were included in the study; the characteristics of the patients at the time of SST are shown in Table 1. Primary glomerular diseases represented in the study included IgA nephropathy, IgA vasculitis, minimal change disease, idiopathic membranous nephropathy, focal segmental glomerulosclerosis and C3d glomerulonephritis. At the time of SST testing, all patients were on Prednisolone doses of 5 mg or less. 80 (65%) of the patients had been on a dose of 5 mg or less for at least 6 months before the test with the remaining patients receiving higher doses during this period. The duration of Prednisolone use was available for 63 patients (51%) and ranged from 4 to 100 months (Table 1). Data on use or non-use of intravenous Methylprednisolone at induction was available for 93 patients

**Table 1** Baseline characteristics of all patients

Variable	Result (n = 123)
Age (years)	51.9 years $\pm$ 18.27
Sex (count)	
Male	63 (51.2%)
Female	60 (48.8%)
Renal diagnosis (count)	
ANCA-associated vasculitis	50 (35.7%)
Primary Glomerular disease	33 (26.8%)
Lupus nephritis	30 (24.4%)
Other	10 (13.0%)
Renal function (eGFR by MDRD <sup>a</sup> equation)	66 (39–90)
Duration of Prednisolone use (months) (data available for n = 63)	18 (9–35)
Induction with intravenous methylprednisolone (count) (data available for n = 93)	19 (20%)
Initial daily Prednisolone dose (mg) (data available for n = 79)	50 (30–60)
Concurrent GC inhaler use (count)	7 (5.7%)

<sup>a</sup>eGFR by MDRD – Estimated Glomerular Filtration Rate by Modification of Diet in Renal Disease Equation

(75%) (Table 1). The initial daily dose of Prednisolone was available for 79 patients (64%) (Table 1). 7 patients were concurrently using GC inhalers. There was no documented concurrent use of topical GCs.

### Adrenal function

57 (46.3%) patients had an insufficient adrenal response to the SST and were therefore diagnosed with biochemical AI. There were no documented clinical episodes of AI prior to the initial SST. The mean baseline cortisol of patients who passed the SST was significantly higher than those who failed with both assays (Table 2). There was no significant difference in age, sex, total duration of Prednisolone use, use of intravenous Methylprednisolone at induction, initial Prednisolone dose, concurrent GC inhaler use and degree of renal impairment between the adrenal sufficient and insufficient patients (Table 2). The outcome was also not influenced by whether or not the patient had been on Prednisolone of 5 mg or less for at least 6 months before the test. There was no significant correlation between duration of Prednisolone and pre-synacthen baseline cortisol (Fig. 1). Underlying glomerular disease did not influence SST outcome ( $p = 0.193$ ).

### Switch to morning 9 am cortisol test

A ROC curve was performed using results of SSTs performed with the Gen 2 assay ( $n = 27$ ) (Fig. 2). A pre-synacthen baseline cortisol (taken between 8:30 am and 10:00)  $\geq 223.5$  nmol/l had a specificity of 100% for passing the SST and a sensitivity of 72.73%. Values above this threshold had a negative predictive value (baseline result above this level indicates healthy individual) of 100% and a positive predictive value (baseline result below this level indicates AI) of 84.2%. A pre-synacthen baseline cortisol  $\leq 119.5$  nmol/l had a sensitivity of 100% for identifying patients with biochemical AI. Utilising this lower cut-off and the assay validated  $\geq 350$  nmol/l upper cut-off would have resulted in 33.3% ( $n = 9$ ) SSTs being avoided.

### Follow-up

Thirty-eight (66.6%) of the 57 patients that failed the SST have had follow-up re-testing. Of the 18 patients that have not been re-tested, 4 are currently waiting for the test, 1 patient died, 8 patients had disease relapse and clinical indication to continue Prednisolone, 3 patients have opted to continue Prednisolone and 3 patients have been lost to follow-up. Of the 38 patients that have been re-tested, 1 patient opted to go back on Prednisolone and a further 4 had disease relapse and indication to continue Prednisolone. Of the remaining 33 patients, 18 patients have recovered adrenal function with a mean time of recovery of  $8.7 \pm 4.6$  months and 15 patients have not recovered with latest testing at a mean of  $15.9 \pm 9.2$  months. Patients who have recovered from

**Table 2** Differences between patients who pass and fail SST

Variable	SST Pass	SST Fail	P value
Age (years)	53 ± 2.3	51 ± 2.4	0.664
Duration of Prednisolone use (months)	17 (8–44)	22 (12.3–34.5)	0.711
Induction with intravenous Methylprednisolone (count)	11 (22%)	8 (19%)	0.686
Initial daily Prednisolone dose (milligrams)	60 (30–60)	40 (30–60)	0.315
GC inhaler use (count)	2 (3.0%)	5 (8.9%)	0.163
Prednisolone 5 mg or less for at least 6 months (count)	42 (64%)	38 (69%)	0.528
Renal function (eGFR by MDRD <sup>1</sup> equation)	69 (40–90)	64 (37–89)	0.294
Pre synacthen baseline Cortisol (1st assay) (nmol/l)	380 ± 19 (n = 54)	200 ± 15 (n = 38)	< 0.001
Pre synacthen baseline Cortisol (2nd assay) (nmol/l)	269 ± 31 (n = 11)	133 ± 20 (n = 18)	< 0.001

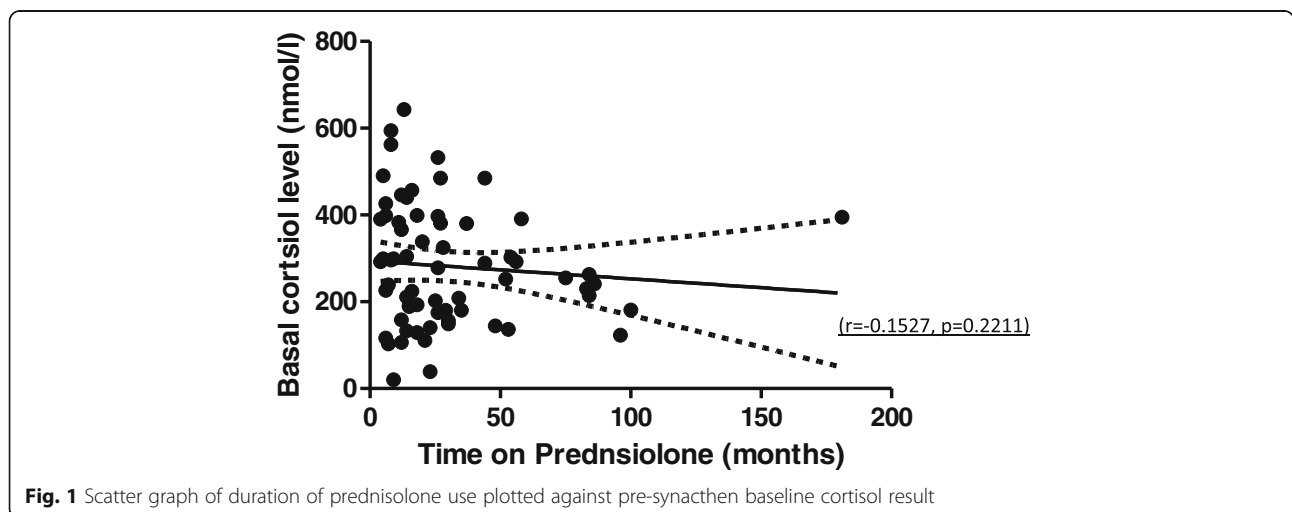
AI had a significantly higher post synacthen cortisol concentration at their initial SST screen than patients who have not recovered across both assays (Table 3). There was no significant difference in age, duration of prednisolone use, initial prednisolone dose and initial pre synacthen baseline cortisol between the two groups. The latest recovery was 23 months following discontinuation of prednisolone.

**Discussion**

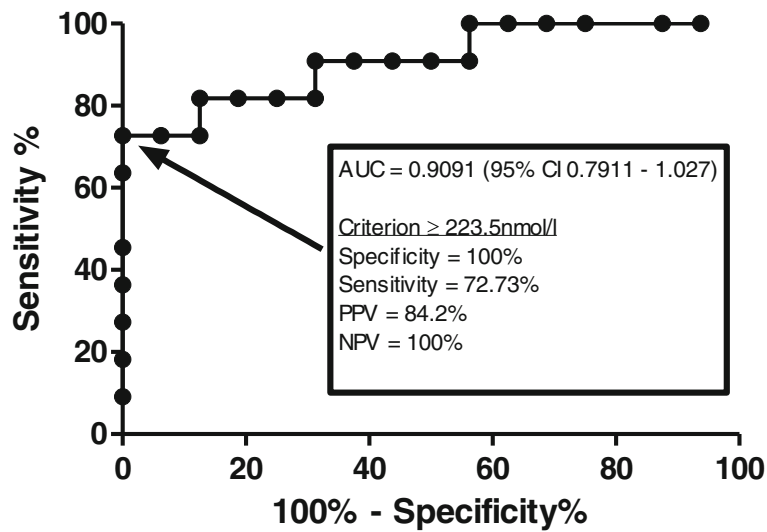
This study has demonstrated that GC induced AI is common (46.3%) in patients with glomerular disease and is present prior to complete withdrawal of Prednisolone. To the best of our knowledge, this has not previously been shown in a subgroup of patients on GCs for glomerular disease. Our results reflect similar prevalence of AI to patients with rheumatoid arthritis receiving low dose GCs [3]. Further analysis of this cohort has shown that age, gender, underlying renal disease, duration of Prednisolone use, use of intravenous Methylprednisolone at induction, starting Prednisolone dose, concurrent GC inhaler use and degree of renal impairment do not influence the risk of AI. We have also shown that keeping patients on

maintenance Prednisolone doses of 5 mg or less for at least 6 months does not lessen the risk. The literature is conflicting over the effect of renal impairment on the HPA axis [8, 9]. One study, with a limited number of subjects, found comparable responses to ACTH between patients with renal impairment and controls [10]. These results reinforce the need for a low index of suspicion when withdrawing GCs, even in patients on low doses.

Our study adds to the current understanding of AI by identifying thresholds of baseline cortisol levels for undertaking SSTs. Random cortisol measurements are not a reliable assessment of the HPA axis due to the diurnal rhythm variation of secretion. Production however peaks at around 08:00 to 09:00 am and previous studies have shown a strong correlation between the basal morning serum cortisol (08:00 to 09:00 am) and the peak cortisol level after ACTH administration [11]. The mean pre-synacthen baseline cortisol, taken between 8:30 am and 10:00 am, in this study was significantly lower in patients who failed the SST. ROC analysis showed that a pre-synacthen basal cortisol ≥223.5 nmol/l had a specificity of 100% for identifying individuals with preserved



**Fig. 1** Scatter graph of duration of prednisolone use plotted against pre-synacthen baseline cortisol result



**Fig. 2** Pre-synacthen cortisol level as a predictor of SST outcome. Receiver-operating characteristic curve with true positive rate (sensitivity %) plotted against false positive rate (100% - specificity%) for different cut-off levels

adrenal function and therefore supports the use of a morning 9 am basal cortisol as an initial screen for AI (validated cut off  $\geq 350$  nmol/l). In addition we found that a basal cortisol  $< 119.5$  mol/l adequately identified patients with biochemical AI. We found that utilising upper and lower limit cut offs would have avoided the need for a SST in a third of patients. Indeed a previous study found that the SST adds little value for a basal cortisol of less than 100 nmol/l or more than 500 nmol/l [12]. A worldwide shortage of Synacthen in 2014 led to a substantial increase in price and avoidance of use may provide a financial benefit [13].

A strength of our study is that we ensured that patients were off Prednisolone for 24 h prior to assessment of adrenal function. All common corticosteroids except Dexamethasone can cross-react with the assay to some degree. The half-life for these agents is approximately 0.5–4.0 h so it is important that Prednisolone is paused for at least 24 h prior to baseline cortisol measurements [14, 15]. We switched patients identified with AI to twice daily Hydrocortisone which has a shorter half-life

than Prednisolone as well as being more favourable on bone mineral density [16]. Patients are also educated on sick day rules and retested at 6 monthly intervals until recovery.

Our study also adds to current understanding by evaluating duration and predictors of recovery. We have shown that patients can take a considerable time to recover which raises concerns over the safety of conventional practice of unmonitored tapering. A higher initial post synacthen cortisol concentration can predict earlier recovery and therefore could inform prognosis discussions with patients. The latest recovery was 23 months after discontinuation of Prednisolone with not a single patient recovering more than 2 years following Prednisolone discontinuation (three patients with latest follow-up at 27, 33 and 36 months respectively). This finding suggests that there may be a cohort of patients that do not recover and have permanent AI. A similar study done in patients with inflammatory bowel disease found a longer time to recovery with a mean of  $3.1 \pm 2.5$  years (mean  $\pm$  SD) however comparison between this study and our findings is limited by the small

**Table 3** Differences between patients who have recovered from AI and those who have not

Variable	Recovered (n = 18)	Not recovered (n = 15)	P Value
Age (years)	53 $\pm$ 3.4	48 $\pm$ 4.8	0.451
Duration of Prednisolone use (months)	28 $\pm$ 25.7	25 $\pm$ 16	0.888
Initial Prednisolone dose (milligrams)	40 (IQR 30 to 60)	30 (IQR 25 to 55)	0.367
Index screen pre synacthen baseline cortisol 1st assay (nmol/l)	205 $\pm$ 30 (n = 14)	202 $\pm$ 31 (n = 9)	0.962
Index screen pre synacthen baseline cortisol 2nd assay (nmol/l)	208 $\pm$ 8.3 (n = 3)	134 $\pm$ 30 (n = 6)	0.148
Index screen post synacthen cortisol 1st assay (nmol/l)	439 $\pm$ 25 (n = 14)	343 $\pm$ 37 (n = 9)	0.034
Index screen post synacthen cortisol 2nd assay (nmol/l)	394 $\pm$ 24 (n = 3)	240 $\pm$ 38 (n = 6)	0.033

sample sizes in both cohorts. The longer time to recovery found in this study does however demonstrate delayed recovery and supports the need to continue re-testing patients with biochemical adrenal insufficiency even after 2 years of discontinuation [17].

One of the limitations of this study was its retrospective design, which led to incomplete access to data on duration of Prednisolone and initial dose, including use of intravenous glucocorticoids on induction. This design may have also led to inaccurate figures on concurrent use of alternate forms of GCs and selection bias due to inability to capture data on patients lost to follow-up. Patients were not instructed to withhold inhaled steroid preparations on the day of the synacthen test which may have suppressed the morning cortisol level, however, from the available data; only 7 patients were using concurrent steroid inhalers. We found no association between duration of GC use and AI, however it must be noted that all our patients had received at least 4 months of GC therapy. The risk of AI has been noted to increase with duration of therapy in many studies but there is considerable variation reported. The relatively small sample sizes in this study may have led to it being underpowered to investigate the impact of initial daily dose and duration of therapy. SST testing, although convenient, is not as accurate as testing the entire HPA axis with alternate tests such as the overnight metyrapone test or insulin tolerance test [18]. We used the standard dose SST (250 µg synacthen) rather than the low dose SST (1 µg synacthen). The later has shown a high inter-method variability in dilution strategies which may result in false positive rates impacting on test specificity [19]. There was a switch in assay towards the end of the data collection window, which consequently resulted in smaller sample sizes when analysing for differences in cortisol levels and outcomes separately for each of the assays. Despite this we still found significant relationships between a lower baseline cortisol in patients who failed the SST and a higher post synacthen cortisol in the recovery group across both assays. An in house audit found no significant difference in number of failed SSTs following the assay change and it is therefore unlikely that the change in assay had an effect on the results.

## Conclusions

In summary, we have demonstrated that biochemical GC induced AI is common in steroid treated glomerular diseases. Initial Prednisolone dose and duration of use did not predict the risk. 9 am basal cortisol is an appropriate first line screening tool and avoids the need for a SST in some patients. Our proposed approach of screening patients, hydrocortisone replacement and education aims to protect patients at risk of adrenal crisis.

## Abbreviations

ACTH: Adrenocorticotrophic hormone; AI: Adrenal Insufficiency; ANCA: Antineutrophil cytoplasmic antibodies; eGFR: estimated Glomerular Filtration Rate; GC: Glucocorticoids; GN: Glomerulonephritis; HPA: Hypothalamic-pituitary-adrenal axis; MDRD: Modification of Diet in Renal Disease equation; ROC: Receiver Operating Curve; SST: Short Synacthen Test

## Acknowledgements

We would like to acknowledge the support of staff in the renal, endocrine and biochemistry department at the Queen Elizabeth Hospital Birmingham, University Hospitals Birmingham, UK, the patients included in the study and the NIHR. We would also like to thank Dr. Dimitrios Chanouzas who provided support with the statistics.

## Funding

This study was supported by a National Institute for Health Research (NIHR) Academic Clinical Fellowship. The funding body had no role in the study conception, design, analysis, manuscript preparation or decision to publish. The views expressed in this article do not necessarily reflect those of the funding body.

## Availability of data and materials

The data that support the findings of this study are available from University Hospitals Birmingham, UK but restrictions apply to the availability of these data, which were used under license for the current study, and so are not publicly available. Data are however available from the authors upon reasonable request and with permission of University Hospitals Birmingham, UK.

## Authors' contributions

Conception and design: SL, PH and LH. Acquisition of data: AHKK, MA and SL. Analysis and interpretation of data: AHKK, MA, SL, KB, PH and LH. Drafting of article: AHKK and LH. Critical revision: AHKK, SC, RW, KB and LH. Final approval of the version to be published: AHKK, MA, SL, SC, RW, KB, PH and LH.

## Ethics approval and consent to participate

This is a service evaluation project that received approval from the clinical audit department at the Queen Elizabeth Hospital Birmingham, UK in 2014 (Audit Code: CARMS-11451).

## Consent for publication

Not applicable

## Competing interests

The authors declare that they have no competing interests.

## Publisher's Note

Springer Nature remains neutral with regard to jurisdictional claims in published maps and institutional affiliations.

## Author details

<sup>1</sup>Institute of Clinical Sciences, College of Medical and Dental Sciences, University of Birmingham, Birmingham B15 2TT, UK. <sup>2</sup>Department of Renal Medicine, Queen Elizabeth Hospital Birmingham, University Hospitals Birmingham NHS Trust, Birmingham B15 2TH, UK. <sup>3</sup>Department of Endocrinology, Queen Elizabeth Hospital Birmingham, University Hospitals Birmingham NHS Trust, Birmingham B15 2TH, UK. <sup>4</sup>Department of Biochemistry, Queen Elizabeth Hospital Birmingham, University Hospitals Birmingham NHS Trust, Birmingham B15 2TH, UK. <sup>5</sup>Institute of Metabolism and Systems Research, College of Medical and Dental Sciences, University of Birmingham, Birmingham B15 2TT, UK.

Received: 5 August 2018 Accepted: 24 April 2019

Published online: 06 May 2019

## References

1. Liu D, Ahmet A, Ward L, Krishnamoorthy P, Mandelcorn E, Leigh R, et al. A practical guide to the monitoring and management of the complications of systemic corticosteroid therapy. *Allergy, Asthma Clin Immunol.* 2013;9(1):30.

2. Joseph RM, Hunter AL, Ray DW, Dixon WG. Systemic glucocorticoid therapy and adrenal insufficiency in adults: a systematic review. *Semin Arthritis Rheum*. 2016;46(1):133–41.
3. Broersen LH, Pereira AM, Jørgensen JOL, Dekkers OM. Adrenal insufficiency in corticosteroids use: systematic review and meta-analysis. *J Clin Endocrinol Metab*. 2015;100(6):2171–80.
4. Sherlock M, Stewart PM. The short Synacthen test and its utility in assessing recovery of adrenal function in patients with central adrenal insufficiency. *J Clin Endocrinol Metab*. 2019;104(1):17–20.
5. Pofi R, Feliciano C, Sbardella E, Argese N, Woods CP, Grossman AB, Jafar-Mohammadi B, Gleeson H, Lenzi A, Isidori AM, Tomlinson JW. The short Synacthen (corticotropin) test can be used to predict recovery of hypothalamo-pituitary-adrenal axis function. *Journal Clin Endocrinol Metab*. 2018;103(8):3050–9.
6. Agha A, Tomlinson JW, Clark PM, Holder G, Stewart PM. The long-term predictive accuracy of the short synacthen (corticotropin) stimulation test for assessment of the hypothalamic-pituitary-adrenal axis. *J Clin Endocrinol Metab*. 2006;91:43–7.
7. Hurel SJ, Thompson CJ, Watson MJ, Harris MM, Baylis PH, Kendall-Taylor P. The short 405 Synacthen and insulin stress tests in the assessment of the hypothalamic-pituitary-adrenal axis. *Clin Endocrinol*. 1996;44:141–6.
8. Ramirez G, Bittle PA, Sanders H, Rabb HAA, Bercu B. The effects of corticotropin and growth hormone releasing hormones on their respective secretory axes in chronic hemodialysis patients before and after correction of anemia with recombinant human erythropoietin. *J Clin Endocrinol Metab*. 1994;78:63–9.
9. Siamopoulos KC, Dardamanis M, Kyriaki D, Pappas M, Sferopoulos G, Alevissou V. Pituitary adrenal responsiveness to corticotropin-releasing hormone in chronic uremic patients. *Peritoneal Dial Int*. 1990;10:153–6.
10. Clodi M, Riedl M, Schmaldienst S, Vychytil A, Kotzmann H, Kaider A, Bieglmayer C, Mayer G, Waldhäusl W, Luger A. Adrenal function in patients with chronic renal failure. *Am J Kidney Dis*. 1998;32(1):52–5.
11. Lee MT, Won JG, Lee TI, Yang HJ, Lin HD, Tang KT. The relationship between morning serum cortisol and the short ACTH test in the evaluation of adrenal insufficiency. *Zhonghua Yi Xue Za Zhi (Taipei)*. 2002;65(12):580–7.
12. Le Roux CW, Meeran K, Alaghband-Zadeh J. Is a 0900-h serum cortisol useful prior to a short Synacthen test in outpatient assessment? *Ann Clin Biochem*. 2002;39(2):148–50.
13. Woods CP, Argese N, Chapman M, Boot C, Webster R, Dabhi V. Adrenal suppression in patients taking inhaled glucocorticoids is highly prevalent and management can be guided by morning cortisol. *Eur J Endocrinol*. 2015;173(5):633–42.
14. Krasner AS. Glucocorticoid-induced adrenal insufficiency. *JAMA*. 1999;282(7):671–6.
15. Wallace I, Cunningham S, Lindsay J. The diagnosis and investigation of adrenal insufficiency in adults. *Ann Clin Biochem*. 2009;46:351–67.
16. Jodar E, Valdepenas MPR, Martinez G, Jara A, Hawkins F. Long-term follow-up of bone mineral density in Addison's disease. *Clin Endocrinol*. 2003;58(5):617–20.
17. Ibrahim A, Dahlqvist P, Olsson T, Lundgren D, Werner M, Suhr OB, Karling P. The clinical course after glucocorticoid treatment in patients with inflammatory bowel disease is linked to suppression of hypothalamic-pituitary-adrenal axis: a retrospective observational study. *Ther Adv Gastroenterol*. 2017;10(11):829–36.
18. Suliman AM, Smith TP, Labib M, Fiad TM, McKenna TJ. The low-dose ACTH test does not provide a useful assessment of the hypothalamic-pituitary-adrenal axis in secondary adrenal insufficiency. *Clin Endocrinol*. 2016;86(2):1365–2265.
19. Cross AS, Kemp EH, White A, Leanne W, Meredith S, Sachdev P, Krone NP, Ross RJ, Wright NP, Elder CJ. International survey on high- and low-dose synacthen test and assessment of accuracy in preparing low-dose synacthen. *Clin Endocrinol*. 2018;88:744–51.

**Ready to submit your research? Choose BMC and benefit from:**

- fast, convenient online submission
- thorough peer review by experienced researchers in your field
- rapid publication on acceptance
- support for research data, including large and complex data types
- gold Open Access which fosters wider collaboration and increased citations
- maximum visibility for your research: over 100M website views per year

**At BMC, research is always in progress.**

Learn more [biomedcentral.com/submissions](https://biomedcentral.com/submissions)

