



# Early initiation of breastfeeding and factors associated with its delay among mothers at discharge from a single hospital

J. Jenifer Florence Mary, MD<sup>1</sup>, R. Sindhuri, MD<sup>1</sup>, A. Arul Kumaran, MD<sup>2</sup>, Amol R. Dongre, MD, MPS, MHPE<sup>3</sup>

<sup>1</sup>Department of Community Medicine, Sri Manakula Vinayagar Medical College and Hospital, Puducherry, India; <sup>2</sup>Department of Pediatrics, Sri Manakula Vinayagar Medical College and Hospital, Puducherry, India; <sup>3</sup>Department of Extension Programmes, Pramukhswami Medical College, Bhaikaka University, Karamsad, Gujarat, India

**Background:** According to the National Family Health Survey–4, in India, 78.9% of deliveries occur in institutions, although only 42.6% of new mothers initiate breastfeeding within 1 hour of delivery.

**Purpose:** To estimate the proportion of early initiation of breastfeeding (EIBF) among new mothers at discharge from a tertiary care hospital and identify the determinants of delayed initiation of breastfeeding among them.

**Methods:** This was a hospital-based analytical cross-sectional study of 108 new mothers. After obtaining Institutional Review Board approval and informed consent, we interviewed the new mothers on the day of discharge. Multivariate logistic regression was performed using IBM SPSS Statistics ver. 24.

**Results:** The median breastfeeding initiation time was 90 minutes (interquartile range, 30–180 minutes). Overall, 43.5% of the mothers practiced EIBF, 77.4% practiced exclusive breastfeeding, and 43.5% were rooming in at discharge. Reasons for breastfeeding delays included extended recovery time from spinal anesthesia, maternal lassitude, and uncomfortable breastfeeding position due to post-cesarean pain. In the multivariate analysis, a birth weight less than 2,500 g (adjusted odds ratio [aOR], 4.33; 95% confidence interval [CI], 1.12–16.82;  $P=0.03$ ), cesarean section delivery (aOR, 4.68; 95% CI, 1.57–13.92;  $P=0.005$ ), and mother's poor knowledge of breastfeeding (aOR, 4.61; 95% CI, 1.44–14.72;  $P=0.010$ ) were more likely to delay the initiation of breastfeeding.

**Conclusion:** EIBF was practiced by less than half of the new mothers as determined by the cesarean section, baby's birth weight, and mothers' awareness of breastfeeding. Thus, it is vital to improve breastfeeding and nutritional counseling among mothers during the antenatal period and improve healthcare professionals' training to facilitate EIBF, even in circumstances such as cesarean section.

**Key words:** Breastfeeding, Postnatal care, Cesarean section

## Key message

**Question:** What are the reasons for the delay in the early initiation of breastfeeding in institutionally delivered babies?

**Finding:** Low birth weight, cesarean section, and low knowledge about breastfeeding were factors associated with breastfeeding initiation delays.

**Meaning:** These related maternal and healthcare providers' factors must be addressed by counseling of mothers during the antenatal period and training of healthcare staff for early breastfeeding initiation at the institutional level.

## Introduction

Early initiation of breastfeeding (EIBF) is defined as 'provision of mothers' breast milk to infants within the first hour of birth and ensures that the newborn receives colostrum.<sup>1</sup> EIBF is crucial as it ensures that the baby receives a colostrum, a yellow liquid contains crucial nutrients and antibodies to newborn acts as a first feed and first immunization.<sup>1</sup> EIBF provides a unique opportunity for the infants to obtain balanced nutrition and energy required for their growth and development at the earliest. Similarly, it creates the bonding between the infant and the mother, which enhances the cognitive development. It also reduces the risk of developing noncommunicable disease and obesity in prime of life.<sup>1,2</sup>

Not only that, EIBF also protects the infants during their critical window period from diseases like diarrhea, neonatal sepsis, and pneumonia and at the same time improves maternal-infant bonding.<sup>2-4</sup> It is evident from the previous studies that EIBF not only plays a crucial role in reducing neonatal mortality and also increases the chances of continuing exclusive breastfeeding at later months.<sup>3,4</sup>

It is expected that delivery conducted in a health institution escalates the chances that a newborn will be initiated on early breastfeeding.<sup>2,5,6</sup> But unexpectedly, though 7.9% of the babies were institutionally delivered in India, only 42.6% of them were breastfed within one hour of birth.<sup>7</sup> Subsequently, various

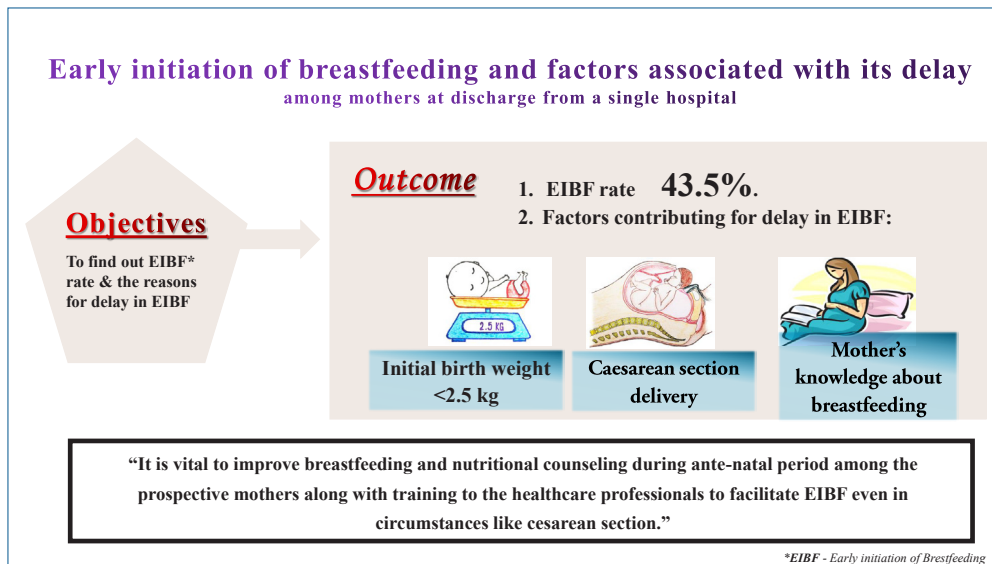
Corresponding author: R. Sindhuri, Department of Community Medicine, Sri Manakula Vinayagar Medical College and Hospital, Kalitheerthalkuppam, Madagadipet, Puducherry, India

✉ Email: mailmesindhuri@gmail.com, <https://orcid.org/0000-0001-8629-924X>

Received: 3 February, 2021, Revised: 1 September, 2021, Accepted: 28 September, 2021

This is an open-access article distributed under the terms of the Creative Commons Attribution Non-Commercial License (<http://creativecommons.org/licenses/by-nc/4.0/>) which permits unrestricted non-commercial use, distribution, and reproduction in any medium, provided the original work is properly cited.

Copyright © 2022 by The Korean Pediatric Society



**Graphical abstract**

maternal and facility-level factors have proven to have impact on EIBF.<sup>6,8)</sup> Our hospital is planning to move towards the baby-friendly hospital initiative (BFHI) policy, in which one of the key components is “to facilitate immediate and uninterrupted skin-to-skin contact and support mothers to initiate breastfeeding as soon as possible after birth.”<sup>9)</sup> Identifying these factors and intervening at an early stage will help to accentuate EIBF at the facility level.<sup>5)</sup> Hence, the current study was planned with the following objectives: (1) to estimate the proportion of EIBF among postnatal mothers at the point of discharge in a tertiary care hospital in Puducherry and (2) to find out the determinants of delayed initiation of breastfeeding among postnatal mothers.

## Methods

### 1. Study methods

The study was conducted in the postnatal ward by the Department of Community Medicine in collaboration with the Paediatrics Department in a tertiary care teaching hospital in Puducherry, India. This tertiary care institute is equipped with state-of-the-art equipment conducive to proficient stalwarts in conducting normal vaginal delivery and cesarean sections, followed by unmitigated postnatal care for both the mother and the newborn. The annual breastfeeding week celebration is organized by both departments, which has a beneficial response in elevating the breastfeeding habits in this hospital. It was a hospital-based analytical cross-sectional study. Data collection was done for 3 months. All postnatal mothers who delivered in the hospital (vaginal & cesarean delivery) during the study period were included in the study. Considering the prevalence of EIBF to be 14%<sup>10)</sup> with 6.5% absolute precision and 10% nonresponse rate, the sample size was 108 (calculated using OpenEpi software ver. 3.01; Open Source Epidemiologic Statistics for Public Health). Consecutive sampling technique was used to include all

the postnatal mothers for the study until the desired sample size was achieved.

### 2. Data collection procedure

After obtaining informed consent, data were collected using a pretested structured questionnaire. The questionnaire included demographic details, baby details, obstetric history, breastfeeding history, infant feeding practices, and rooming-in. Besides, open-ended questions were used to find out the reasons for delayed initiation of breastfeeding and rooming-in. A trained Community Medicine postgraduate paid visit to the postnatal mothers in the ward and conducted a face-to-face interview on the day before discharge. Confidentiality, anonymity, and privacy of the participants were guaranteed throughout the study.

### 3. Data analysis

The collected data were entered in Epi\_Info (ver. 7.2.2.6; Centers for Disease Control and Prevention, Atlanta, GA, USA, and World Health Organization) software and analysed using IBM SPSS Statistics ver. 24.0 (IBM Co., Armonk, NY, USA). Bivariate and multivariate analyses were done to find out the determinants of delay in EIBF. In the first stage, an association between the delayed initiation of breastfeeding (dependent variable) and 15 independent variables such as baby age, baby’s sex, birth weight of the baby, mother’s age, area of the respondent, mother’s occupation, mother’s education, family type, socioeconomic status, religion, birth order, delivery type, prelacteal feeds, rooming-in and breastfeeding knowledge in mothers were done using bivariate analysis. In the next stage, 11 variables, (4 variables with higher odds ratio and 7 significant variables) obtained from bivariate analysis were included for multivariate logistic regression. The level of significance was set at 5% ( $P < 0.05$ ). The multiple coefficient of determinance ( $R^2$ ) was used as a goodness-of-fit statistic for the model.

#### 4. Ethical consideration

Ethical clearance was obtained from the Institutional Ethics Committee (IEC) of Sri Mankula Vinayagar Medical College and Hospital, Puducherry (IEC Code no: 37/2019).

#### 5. Guidelines used for reporting the study

To ensure the present hospital-based cross-sectional study's systemic reporting, STROBE (Strengthening The Reporting of an OBservational study in Epidemiology) guideline was followed.<sup>11)</sup>

**Table 1. Sociodemographic details of postnatal mothers and infants before discharge (n=108)**

Variable	No. (%)
<b>Age of the baby (day)</b>	
≤7	65 (60.2)
>7	43 (39.8)
<b>Sex of the baby</b>	
Male	59 (54.6)
Female	49 (45.4)
<b>Birth weight of the baby (g)</b>	
<2,500	21 (19.5)
≥2,500	87 (80.5)
<b>Order of birth</b>	
First child	48 (44.4)
Second child	47 (43.5)
Three or more children	13 (12.1)
<b>Age of the mother (yr)</b>	
10–19	6 (5.6)
20–29	79 (73.1)
≥30	23 (21.3)
<b>Area of the respondent</b>	
Urban	55 (50.9)
Rural	53 (49.1)
<b>Mothers' education</b>	
Primary (1–8 yr)	11 (10.2)
Secondary (9–12 yr)	38 (35.2)
Graduate and professional (>13 yr)	59 (54.6)
<b>Mothers' occupation</b>	
Housewife	101 (93.5)
Working mothers	7 (6.5)
<b>Religion</b>	
Hindu	90 (83.3)
Muslim	14 (13.0)
Christian	4 (3.7)
<b>Type of the family</b>	
Joint or 3-generation	56 (51.9)
Nuclear	52 (48.1)
<b>Socioeconomic status of the family (BG Prasad scale 2019)</b>	
≥7008 (class 1)	16 (14.8)
3504–7007 (class 2)	33 (30.6)
2102–3503 (class 3)	26 (24.1)
1051–2101 (class 4)	21 (19.4)
≤1050 (class 5)	12 (11.1)

## Results

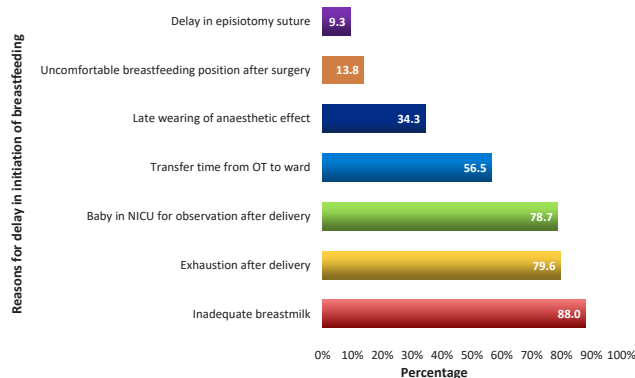
The sociodemographic details of the baby and the mothers were given in Table 1. The mean±standard deviation age of the postnatal mothers was 26.16±4.22 years.

### 1. Breastfeeding and related practices

The median breastfeeding initiation time was 90 minutes (interquartile range [IQR], 30–180 minutes) among the participants. Out of 108 respondents, about 47 mothers (43.5%) initiated breastfeeding within one hour of the delivery (vaginal and cesarean delivery). Nearly 107 of infants (99.1%) were breastfed. Of the infants, 84 (77.4%) were exclusively breast milk-fed (breast milk+expressed breast milk), and more than half 73 (67.6%) were exclusively breastfed by natural mothers from the day of birth until discharge. Only 1 of infants (0.9%) received bottled feed as the mother was on antiarrhythmia drug. Of 108 mother-baby pairs, only 47 (43.5%) practiced rooming-in, and the reasons stated for low rooming-in practice were cesarean section and the requirement of neonatal intensive care unit (NICU) admission for babies for their medical illness.

### 2. Reasons for delayed initiation of breastfeeding

Among 61 mothers who delayed initiation of breastfeeding, majority of them 95 (88.0%) stated that inadequate breast milk was the reasons for the delay. Other reasons stated by the mothers include that, about 86 mothers (79.6%) were exhausted after delivery, 37 participants (34.3%) said extended recovery time from anesthesia (late wearing of anaesthetic effect), 15 mothers (13.8%) explained the uncomfortable breastfeeding position after cesarean section and 10 mothers (9.3%) stated that delayed in episiotomy suture. Added to that, 85 of mothers (78.7%) quoted that their baby was in NICU observation after delivery and 61 mothers (56.5%) said there was an increased time for the transfer of baby form NICU after observation to ward or transfer of mother from operational theater to ward delayed the breastfeeding initiation (Fig. 1).



**Fig. 1.** Reasons for delay of early initiation of breastfeeding (n=61). Values are presented with percentages (%). OT, operating theater; NICU, neonatal intensive care unit.

### 3. Factors associated with delayed initiation of breastfeeding

In multivariate analysis, 3 variables emerged as significant predictors for the delay in EIBF. Mothers who had babies with a birth weight of less than 2,500 g had 4.33 times higher odds (95% confidence interval [CI], 1.12–16.82;  $P=0.034$ ) in delayed initiation of breastfeeding when compared to babies with birth weight more than or equal to 2,500 g. Mothers who had a cesarean section (95% CI, 1.57–13.92;  $P=0.005$ ) had

4.68 times higher odds of not initiating breastfeeding earlier than mothers who had a vaginal delivery. Similarly, the odds of delay in EIBF among mothers who had poor knowledge about breastfeeding was 4.61 times (95% CI, 1.44–14.72;  $P=0.010$ ) higher when compared to the mothers with breastfeeding knowledge. The Nagelkerke pseudo-R<sup>2</sup> value for the final model was 36.7 percentages (Table 2). The EIBF rates and associated factors from other studies were summarized in Table 3.

**Table 2. Bivariate and multivariate analyses of determinants of delayed initiation of breastfeeding among postnatal mothers at discharge (n=108)**

Variable	No. (%)	Delay in EIBF, n (%)	OR (95% CI)	
			Unadjusted	Adjusted
<b>Sex of the baby</b>				
Male	59 (54.6)	34 (57.6)	1.10 (0.51–2.37)	
Female	49 (45.4)	27 (55.1)	1	
<b>Birth weight of the baby (g)</b>				
<2,500	21 (19.5)	16 (76.2)	<b>2.98 (1.00–8.87)</b>	<b>4.33 (1.12–16.82)</b>
≥2,500	87 (80.5)	45 (51.7)	1	1
<b>Age of the mother (yr)</b>				
10–19	6 (5.6)	2 (33.3)	5.25 (0.56–48.95)	
20–29	79 (73.1)	21 (26.6)	3.80 (0.82–17.62)	
≥30	23 (21.3)	2 (8.7)	1	
<b>Area of the respondent</b>				
Urban	55 (50.9)	10 (18.2)	1.77 (0.71–4.40)	
Rural	53 (49.1)	15 (28.3)	1	
<b>Mothers' occupation</b>				
Housewife	101 (93.5)	22 (21.8)	1	
Working mothers	7 (6.5)	3 (42.9)	2.69 (0.56–12.94)	
<b>Mother's education</b>				
Primary	11 (10.2)	6 (54.5)	0.61 (0.16–2.26)	
Secondary	38 (35.2)	16 (42.1)	<b>0.37 (0.16–0.86)</b>	
Graduate & professional	59 (54.6)	39 (66.1)	1	
<b>Socioeconomic status of the family (BG Prasad scale 2019)</b>				
Upper class	16 (14.8)	10 (62.5)	5 (0.95–26.1)	
Middle class <sup>a)</sup>	80 (74.1)	47 (58.8)	<b>4.27 (1.07–16.99)</b>	
Lower class	12 (11.1)	3 (25.0)	1	
<b>Order of birth</b>				
First child	48 (44.4)	31 (64.6)	1	
Second child	47 (43.5)	26 (55.3)	0.67 (0.29–1.54)	
Three or more children	13 (12.1)	4 (30.8)	<b>0.24 (0.06–0.91)</b>	
<b>Type of delivery</b>				
Cesarean section	77 (71.3)	50 (64.9)	<b>3.36 (1.40–8.05)</b>	<b>4.68 (1.57–13.92)</b>
Vaginal delivery	31 (28.7)	11 (35.5)	1	1
<b>Prelacteal feeding</b>				
Yes	24 (22.2)	18 (75.0)	<b>3 (1.08–8.30)</b>	
No	84 (77.8)	42 (50.0)	1	
<b>Knowledge about breastfeeding</b>				
Yes	77 (71.3)	37 (48.1)	1	1
No	31 (28.7)	24 (77.4)	<b>3.70 (1.42–9.61)</b>	<b>4.61 (1.44–14.72)</b>

Bivariate and multivariate logistic regression analyses were used.

EIBF, early initiation of breastfeeding; OR, odds ratio; CI, confidence interval.

<sup>a)</sup>Middle class, upper middle class (class 2), middle class (class 3), and lower middle class (class 4).

Boldface indicates a statistically significant difference with  $P<0.05$ .

Adjusted variables: baby sex, birth weight, mother's age, area of resident, mother's occupation and education, socioeconomic status, birth order, delivery type, prelacteal feeding, and mother's knowledge about breastfeeding.

## Discussion

The present study showed that, out of 108 postnatal mothers, 47 (43.5%) initiated breastfeeding within 1 hour after delivery. The median breastfeeding initiation time was about 90 minutes (IQR, 30–180 minutes). Approximately 73 infants (67.6%)

were breastfed exclusively by their mothers, but the rooming-in rate was 47 (43.5%) only. Babies with birth weight less than 2,500 g; mothers who had cesarean section delivery and reduced awareness and knowledge about breastfeeding were found to be significant factors for delayed initiation of breastfeeding.

In the present study, EIBF rate was found to be 43.5%, despite

**Table 3. Summary of rate of early initiation of breastfeeding and factors associated with its delay**

Regions and year	Author	Type of study	EIBF	Factors associated with delayed initiation of breastfeeding
Studies with increased EIBF rate than our study prevalence of 43.5%				
International				
Ethiopia; 2016	Tewabe <sup>22)</sup>	Cross-sectional study	78.8%	Delivery at home, cesarean section, given prelacteal feeds
Guatemala; 2017	Atyeo et al. <sup>24)</sup>	Mixed method study	76%	Source of breastfeeding information from mother or relative, complementary food introduction, living area
Bahir Dar City, Ethiopia; 2019	Belachew <sup>23)</sup>	Cross-sectional study	75.4%	Delivery at home, cesarean section, no breastfeeding counseling during ANC visits
Bangladesh; 2019	Karim et al. <sup>6)</sup>	Secondary data analysis	51%	Cesarean section, mother who have not received PNC visit with babies
Northern Uganda; 2017	Mukunya et al. <sup>21)</sup>	National survey	48.2%	Cesarean delivery, discarding initial breast milk, delivery at home, education status of mother
Kathmandu; 2019	Acharya et al. <sup>20)</sup>	Cross-sectional study	47.3%	Cesarean delivery, low birth weight babies
Saudi Arabia; 2019	Ahmed and Salih <sup>28)</sup>	Cross-sectional study	43.6%	Cesarean section, reduced knowledge about breastfeeding, mother's educational status, do not know how to initiate breastfeeding
National				
Tamil Nadu; 2012	Jennifer and Muthukumar <sup>19)</sup>	Cross-sectional study	97.5%	-
Andhra Pradesh, 2019	Uppiretra et al. <sup>16)</sup>	Cross-sectional study	75.6%	-
Maharashtra, 2020	Jeyakumar et al. <sup>15)</sup>	Cross-sectional study	45.2%	Delivery at home, cesarean section, very low birth weight
Studies with reduced EIBF rate than our study prevalence of 43.5%				
International				
Nigeria; 2016	Berde and Yalcin <sup>2)</sup>	Cross-sectional study	34.7%	Delivery at home, cesarean section, first birth order, size of the baby at birth, mother's occupation, wealth index, residency type
Uganda; 2015	Kalisa et al. <sup>27)</sup>	Cross-sectional study	31.4%	Maternal HIV positive status, inadequate prenatal guidance, inadequate professional assistance to initiate breastfeeding, cesarean section, other reasons were perceived lack of breast milk, need of rest for both mother and baby after labor, and negative cultural beliefs.
Northwestern Romania; 2019	Cozma-Petru et al. <sup>26)</sup>	Cross-sectional study	24.3%	Public hospital delivery, Cesarean delivery, no mother-newborn skin-to-skin contact for one hour or more, no counseling during ANC visit
National				
Madhya Pradesh; 2015	Sharma et al. <sup>14)</sup>	Cross-sectional study	38.6%	Mother's education and occupation, reduced counseling of mother during ANC visits, home delivery, delivery conducted by untrained person, no postnatal advice received
Nagpur; 2013	Patel et al. <sup>13)</sup>	Cross-sectional study	36.4%	Education status of the mother, no counseling during ANC clinic visit, cesarean section, mothers with obstetric problems, gestational week
Odisha; 2021	Kuchi et al. <sup>18)</sup>	Observational study	36.4%	Cesarean sections, rooming-in, multiparous homemakers, nuclear families
Puducherry; 2018	Babu et al. <sup>30)</sup>	Mixed method study	1.39%	Time of rooming-in, mother's knowledge on importance of EIBF
Haryana; 2016	Majra and Silan <sup>8)</sup>	Qualitative study - FGD	-	Lack of awareness regarding proper technique of breastfeeding and benefits of colostrum, breast abnormality like inverted/retracted nipples, obstetric/neonatal complications requiring specialized care, cultural practices like giving prelacteal, gender discrimination

EIBF, early initiation of breastfeeding; ANC, antenatal care; PNC, postnatal care; HIV, human immunodeficiency virus; FGD, focus group discussion.



the breastfeeding rate of 99.1%, which was similar to the EIBF rate at the national level (42.6%); however, it was found to be lower than the Puducherry state-level report (64.6%).<sup>7,12</sup> Besides, the prevalence of EIBF observed in our study was lower than that observed in studies done in other states such as Maharashtra (45.2%), Andhra Pradesh (75.6%), and Tamil Nadu (97.5%) but higher than Madhya Pradesh (38.6%), Nagpur and Odisha (36.4%), and Bihar (24.86 percentage).<sup>13-19</sup> This deviations of the rate within nation might be owing to study setting, sampling procedures in other studies, and possible effects from cultural factors. Similar cross-sectional studies done outside India, in Africa, Central America, Nepal, and Bangladesh showed higher prevalence of EIBF ranging from 47.3% to 80% while results from Uganda, Nigeria, and Northwest Romania showed lower EIBF rate (range, 19.7%–34.7%) than our study findings.<sup>2,6,20-27</sup> (Table 3). The wide variation in EIBF rates may be due to disparities in social, cultural, and ethnographic factors, in breastfeeding practice.

Mothers who had delivered their baby by cesarean section were found to be associated with delay in initiation of breastfeeding (aOR, 4.68; 95% CI, 1.57–14.72;  $P=0.005$ ) as compared to those who had a vaginal delivery. This association has also been observed with the studies from India and other countries globally.<sup>2,6,13,15,18,20-23,26-28</sup> Maternal factors, such as maternal lassitude, inconvenient breastfeeding position due to post-cesarean pain, and insufficient breastmilk (due to reduced oxytocin release followed by anesthesia)<sup>29</sup> might have hampered the immediate direct skin-to-skin contact, was observed in this study also contributed for the delay.<sup>2,6,8,13,18,20-23,27,30</sup> This can be overcome by providing physical and psychological support to these mothers by their family members and healthcare providers immediately after cesarean section might improve the EIBF.

Institutional factors for EIBF among cesarean section mothers such as extended recovery time from spinal anesthesia and reduced rooming-in rate which were also found in our study might have contributed to this delay.<sup>2,6,8,13,18,20-23,27,30</sup> This reduced practice of EIBF in postoperative room immediately after C-section by healthcare professionals who assist in mother's recovery rather than initiating breastfeeding might lend to this factor.<sup>23</sup> This can be overcome by initiating maternal-infant skin-to-skin contact at the earliest through practices like breast-crawl that proven to have a major impact on EIBF even in cesarean deliveries.<sup>31,32</sup> Thus, healthcare providers and nursing staff need to be sensitized about these bottlenecks in initiating EIBF and need to be trained about the different breastfeeding positions, and practice of breast-crawl in cesarean sections. This also requires, appropriate guidelines and policy regarding the cesarean delivery at the healthcare center to improve the EIBF.

Baby's birth weight of less than 2,500 g was a significant factor for delayed breastfeeding initiation (aOR, 4.33; 95% CI, 1.12–16.82;  $P=0.034$ ) found in the study. Our findings were similar to the studies done in inside and outside India.<sup>2,13,15,20</sup> The possible explanation of the delay in EIBF could be due to poor suckling capacity, swallowing difficulty and poor co-ordination

of a premature baby and requirement of admission in a NICU due to medical conditions like respiratory distress, jaundice, meconium aspirations, and again low birth weight<sup>5,6,13,20</sup> were also asserted in our study. These barriers can be addressed by providing early skin-to-skin contact and initiating breastfeeding immediately after delivery to improve their suckling reflex and giving expressed breast milk to the babies admitted in NICU to improve their nutrition and well-being. This explicates the want of practice and training to healthcare providers in handling low birth weight babies and counseling to the prospective mothers during the antenatal care (ANC) clinic to achieve the early initiation and continuation of breast milk feeding in low birth weight babies.

The current study showed that mothers who had poor knowledge about breastfeeding had 4.61 times higher odds to delay initiation of breastfeeding than mothers with knowledge about breastfeeding (95% CI, 1.44–14.72;  $P=0.010$ ). This was consistent with the findings of the studies done previously.<sup>13,26,28</sup> ANC visit or appointments acts as a bridgehead of the mothers to have contact with the healthcare professionals.<sup>33</sup> Multiple researches have revealed that approaches like health promotion and breastfeeding counseling during the ANC visit can enhance the rate of timely initiation of breastfeeding.<sup>5,9,22,24,27,34,35</sup> Thus, scaling up of intervention programs among antenatal mothers at the institutional level helps the mothers to be more receptive and provide them good opportunity to acquire knowledge about it to prepare them for timely initiation of breastfeeding.<sup>5,34</sup> In addition to that, healthcare professionals need to be trained on skills requires for efficient initiation of breastfeeding for its promotion and support along with nutritional education. Furthermore, this explains the paramount importance of implementing the baby-friendly initiatives at the institution level.

The major strengths of the study are the use of pretested structured questionnaire and data collection by a single investigator throughout the study. Collection of data at the point of discharge helps to minimize the maternal recall bias. However, being a cross-sectional study, temporality of association could not be assessed. Also, this was a hospital-based single centric study, in which the results cannot be extrapolated to the general population.

EIBF was practiced by less than half of the postnatal mothers, determined by birth by cesarean section, the baby's birth weight and mothers' awareness about breastfeeding. We recommend that additional support, training, and education need to be provided to the healthcare practitioners to increase breastfeeding initiation to the mothers predominantly who had cesarean sections to enable early skin-to-skin contact. Overall, this study also implies that comprehensive breastfeeding education programs and counseling targeting antenatal mothers need to be scaled up at the institution level. Added to these, there is an imperative need to focus on full implementation of the BFHI and infant young child feeding policies at the institutional level to intensify the EIBF and child's well-being.

## Footnotes

Conflicts of interest: No potential conflict of interest relevant to this article was reported.

Funding: This study received no specific grants or funding from any funding agency in public, commercial, or not-for-profit sectors.

Acknowledgments: We thank all the staff, physicians, medical interns, and nurses in the Department of Paediatrics and Obstetrics for their generous assistance and support; we were also very thankful to all the postnatal mothers who participated in this study. I also extend my gratitude to the judges of poster presentation of AIIMS conference 2020, Mangalagiri, for their comments in improving the draft.

ORCID:

R. Sindhuri  <https://orcid.org/0000-0001-8629-924X>

J. Jenifer Florence Mary  <https://orcid.org/0000-0001-8869-2416>

## References

1. World Health Organization (WHO). Breastfeeding [Internet]. Geneva (Switzerland): WHO; c2022 [cited 2019 Feb 26]; Available from: [https://www.who.int/health-topics/breastfeeding#tab=tab\\_2](https://www.who.int/health-topics/breastfeeding#tab=tab_2).
2. Berde AS, Yalcin SS. Determinants of early initiation of breastfeeding in Nigeria: a population-based study using the 2013 demographic and health survey data. *BMC Pregnancy Childbirth* 2016;16:32.
3. Shane AL, Sánchez PJ, Stoll BJ. Neonatal sepsis. *Lancet* 2017;390:1770-80.
4. Debes AK, Kohli A, Walker N, Edmond K, Mullany LC. Time of initiation of breastfeeding and neonatal mortality and morbidity: a systematic review. *BMC Public Health* 2013;13:S19.
5. Forster DA, McLachlan HL. Breastfeeding initiation and birth setting practices: a review of the literature. *J Midwifery Womens Health* 2007;52:273-80.
6. Karim F, Billah SM, Chowdhury MAK, Zaka N, Manu A, Arifeen SE, et al. Initiation of breastfeeding within one hour of birth and its determinants among normal vaginal deliveries at primary and secondary health facilities in Bangladesh: a case-observation study. *PLoS One* 2018;13:e0202508.
7. United Nations Children's Fund (UNICEF). India (IND)—Demographics, Health and Infant Mortality—UNICEF DATA [Internet]. New York: UNICEF; 2019 [cited 2020 Mar 23]. Available from: <https://data.unicef.org/country/ind/>.
8. Majra JP, Silan VK. Barriers to early initiation and continuation of breastfeeding in a tertiary care institute of Haryana: a qualitative study in nursing care providers. *J Clin Diagn Res* 2016;10:LC16-20.
9. World Health Organization (WHO) & United Nations Children's Fund (UNICEF). Implementation guidance: protecting, promoting and supporting breastfeeding in facilities providing maternity and newborn services—the revised Baby-Friendly Hospital Initiative. Geneva (Switzerland): WHO; 2018.
10. Takahashi K, Ganchimeg T, Ota E, Vogel JP, Souza JP, Laopaiboon M, et al. Prevalence of early initiation of breastfeeding and determinants of delayed initiation of breastfeeding: secondary analysis of the WHO global survey. *Sci Rep* 2017;7:44868.
11. von Elm E, Altman DG, Egger M, Pocock SJ, Gøtzsche PC, Vandenbroucke JP, et al. statement: guidelines for reporting observational

- studies. *Ann Intern Med* 2007;147:573-7.
12. Senanayake P, O'Connor E, Ogbo FA. National and rural-urban prevalence and determinants of early initiation of breastfeeding in India. *BMC Public Health* 2019;19:896.
13. Patel A, Banerjee A, Kaletwad A. Factors associated with prelacteal feeding and timely initiation of breastfeeding in hospital-delivered infants in India. *J Hum Lact* 2013;29:572-8.
14. Sharma A, Thakur PS, Tiwari R, Kasar PK, Sharma R, Kabirpanthi V. Factors associated with early initiation of breastfeeding among mothers of tribal area of Madhya Pradesh, India: a community based cross sectional study. *Int J Community Med Public Health* 2016;3:194-9.
15. Jayakumar A, Jungari S, Nair R, Menon P, Babar P, Bhushan B, et al. Prevalence and determinants of early initiation (EI), exclusive breastfeeding (EBF), and prelacteal feeding among children aged 0-24 months in slums of Pune city, in Maharashtra. *Ecol Food Nutr* 2021;60: 377-93.
16. Uppiretla SB, Mishra SK, Rachakulla HK. Infant feeding practices among mothers in rural Rajamahendravaram, Andhra Pradesh. *I J Community Med Public Health* 2019;6:2121-6.
17. Randhawa A, Chaudhary N, Gill BS, Singh A, Garg V, Balgir RS. A population-based cross-sectional study to determine the practices of breastfeeding among the lactating mothers of Patiala city. *J Family Med Prim Care* 2019;8:3207-13.
18. Kuchi S, Sahu S, John J. Too little and too late. Initiation of breastfeeding in Odisha, India: an observational study. *J Family Med Prim Care* 2021; 10:1592-5.
19. Jennifer HG, Muthukumar K. A cross-sectional descriptive study to estimate the prevalence of early initiation and exclusive breast feeding in the rural health training centre of a medical college in Tamilnadu, Southern India. *J Clin Diagnostic Res* 2012;6:1514-7.
20. Acharya S, Khanal C, Dahal AS, Maharjan M. The determinants of early initiation of breastfeeding practice among mothers attending a tertiary hospital, Kathmandu. *J Nepal Paediatr Soc* 2019;39:168-73.
21. Mukunya D, Tumwine JK, Nankabirwa V, Ndeezi G, Odongo I, Tumuhameye J, et al. Factors associated with delayed initiation of breastfeeding: a survey in Northern Uganda. *Glob Health Action* 2017;10: 1410975.
22. Tewabe T. Timely initiation of breastfeeding and associated factors among mothers in Motta town, East Gojjam Zone, Amhara regional state, Ethiopia, 2015: a cross-sectional study. *BMC Pregnancy Childbirth* 2016;16:314.
23. Belachew A. Timely initiation of breastfeeding and associated factors among mothers of infants age 0-6 months old in Bahir Dar City, Northwest, Ethiopia, 2017: a community based cross-sectional study. *Int Breastfeed J* 2019;14:5.
24. Atyeo NN, Frank TD, Vail EF, Sperduto WAL, Boyd DL. Early initiation of breastfeeding among maya mothers in the Western Highlands of Guatemala: practices and beliefs. *J Hum Lact* 2017;33:781-9.
25. Ali F, Mgongo M, Mamsari R, George JM, Mboya IB, Msuya SE. Prevalence of and factors associated with early initiation of breastfeeding among women with children aged < 24 months in Kilimanjaro region, northern Tanzania: a community-based cross-sectional study. *Int Breastfeed J* 2020;15:80.
26. Cozma-Petruț A, Badiu-Tișa L, Stanciu O, Filip L, Banc R, Gavrilăș L, et al. Determinants of early initiation of breastfeeding among mothers of children aged less than 24 months in Northwestern Romania. *Nutrients* 2019;11:2988.
27. Kalisa R, Malande O, Nankunda J, Tumwine JK. Magnitude and factors associated with delayed initiation of breastfeeding among mothers who deliver in Mulago hospital, Uganda. *Afr Health Sci* 2015;15:1130-5.
28. Ahmed AE, Salih OA. Determinants of the early initiation of breastfeeding in the Kingdom of Saudi Arabia. *Int Breastfeed J* 2019;14:13.
29. Smith LJ, Kroeger M. Impact of birthing practices on breastfeeding. 2nd ed. Sudbury (MA): Jones & Barlett Learning, 2010:102-3.
30. Babu RA, Keepanasseril A, Kanimozhi K. Practice of early initiation of breastfeeding among postnatal mothers in a tertiary hospital in south India. *Int J Adv Med Health Res* 2018;5:18-20.
31. Girish M, Mujawar N, Gotmare P, Paul N, Punia S, Pandey P. Impact

- and feasibility of breast crawl in a tertiary care hospital. *J Perinatol* 2013; 33:288-91.
32. Thomas S, Mohanty N, Dasila PK. Effect of breast crawl on initiation of breastfeeding and initial weight loss among new-borns. *Manipal J Nurs Health Sci* 2018;4:1-5.
33. World Health Organization (WHO). Opportunities for Africa's Newborns Practical data, policy and programmatic support for newborn care in Africa [Internet]. Geneva (Switzerland): WHO; 2006 [cited 2021 Mar 28]; Available from: <https://www.who.int/pmnch/media/publications/oanfullreport.pdf>.
34. Fairbank L, O'Meara S, Renfrew MJ, Woolridge M, Sowden AJ, Lister-Sharp D. A systematic review to evaluate the effectiveness of interventions to promote the initiation of breastfeeding. *Health Technol Assess* 2000; 4:1-171.
35. Ninan B, Balakrishnan U, Mohamed A, Manjula M, Abiramalatha T, Chandrasekaran A, et al. Impact of lactation support program on initiation of breastfeeding in term infants. *Asian Pac Isl Nurs J* 2019;4:108-15.

**How to cite this article:** Mary JFF, Sindhuri R, Kumaran AA, Dongre AR. Early initiation of breastfeeding and factors associated with its delay among mothers at discharge from a single hospital. *Clin Exp Pediatr* 2022;65:201-8. <https://doi.org/10.3345/cep.2021.00129>