

## REVIEW



Cite this: *RSC Chem. Biol.*, 2024,  
5, 595

# Carbohydrate-active enzyme (CAZyme) discovery and engineering via (Ultra)high-throughput screening

Jacob F. Wardman <sup>ab</sup> and Stephen G. Withers <sup>\*abc</sup>

Carbohydrate-active enzymes (CAZymes) constitute a diverse set of enzymes that catalyze the assembly, degradation, and modification of carbohydrates. These enzymes have been fashioned into potent, selective catalysts by millennia of evolution, and yet are also highly adaptable and readily evolved in the laboratory. To identify and engineer CAZymes for different purposes, (ultra)high-throughput screening campaigns have been frequently utilized with great success. This review provides an overview of the different approaches taken in screening for CAZymes and how mechanistic understandings of CAZymes can enable new approaches to screening. Within, we also cover how cutting-edge techniques such as microfluidics, advances in computational approaches and synthetic biology, as well as novel assay designs are leading the field towards more informative and effective screening approaches.

Received 23rd January 2024,  
Accepted 16th May 2024

DOI: 10.1039/d4cb00024b

rsc.li/rsc-chembio

## Introduction

Carbohydrates are among the most stable biological polymers. Indeed, intact cellulose and chitin can be found in fossils dating back 45 million years.<sup>1,2</sup> At the same time, the combinations and permutations of carbohydrates far exceed the complexity that can be achieved with other polymers such as nucleic acids or polypeptides.<sup>3</sup> The surface of every cell is coated in carbohydrates, and it is this complexity that primes these carbohydrates – especially in the form of conjugates with lipids or proteins – for vital roles in cellular signaling.<sup>4</sup> To degrade, synthesize, or otherwise manipulate carbohydrates, Nature has developed and utilized a suite of enzymes known as carbohydrate-active enzymes (or CAZymes). CAZymes are a remarkable class of enzymes that carry out diverse reactions with often exquisite selectivity and large rate enhancements. As an example, glycoside hydrolases (GHs), the primary enzymes involved in carbohydrate degradation, commonly act with specificity both for the types of sugar(s), and the stereo- and regiochemistry of the linkage; while also offering up to 10<sup>17</sup>-fold rate enhancements compared to background hydrolysis.<sup>5</sup>

CAZymes have found a number of applications beyond what Nature has developed them for. At an industrial level, CAZymes

can play roles in biofuel production,<sup>6</sup> textile processing,<sup>7</sup> and the production of prebiotics<sup>8</sup> and other designer food sugars.<sup>9</sup> Applications in biomedical science include the re-modelling of blood and organ antigens,<sup>10–13</sup> development of longer lasting biopharmaceuticals,<sup>14,15</sup> and the manipulation and analysis of protein glycosylation patterns to provide more potent biopharmaceuticals.<sup>16,17</sup> In addition, CAZymes often provide useful fundamental research tools for deciphering the roles of specific carbohydrate and glycoconjugate structures in biological systems (often called the glyco-code).<sup>4,18,19</sup>

The central role of carbohydrates in cellular structure, signaling and metabolism at all levels of life has led to an incredible diversity of enzymes for glycan biosynthesis and degradation. Consequently, Nature can often provide us with ready-made enzymatic solutions for our specific needs since, in many instances, organisms have spent millennia evolving enzymes to carry out the exact reactions that a researcher is interested in. Such enzymatic diversity can be accessed through creation of synthetic gene libraries or through methods such as functional metagenomics (for which random fragments of bacterial DNA are cloned into laboratory strains of bacteria for expression and screening).<sup>20</sup> However, enzymes obtained from Nature may not always have the exact desired activity or specificity. Directed evolution – for which the Nobel Prize in chemistry was awarded in 2018 – has offered a useful way of modifying these enzymatic activities for different purposes.<sup>21</sup> In principle: the process of directed evolution subjects genes to accelerated evolution through mutagenesis and subsequent screening/selection for the transformations or properties of interest to the researcher.

<sup>a</sup> Department of Biochemistry and Molecular Biology, University of British Columbia, Vancouver, BC V6T 1Z3, Canada. E-mail: withers@chem.ubc.ca

<sup>b</sup> Michael Smith Laboratories, University of British Columbia, Vancouver, BC V6T 1Z4, Canada

<sup>c</sup> Department of Chemistry, University of British Columbia, Vancouver, BC V6T 1Z1, Canada



In order to find an enzyme for a desired purpose it is typically necessary to screen many different clones containing sequence variants. High-throughput screening is thus essential in CAZyme discovery and engineering campaigns. While differing in the source material, the screens applied in directed evolution, interrogation of synthetic gene libraries, and functional metagenomics are similar in their design and often interchangeable. This review will cover both recent advances and general principles in the field of (ultra)high-throughput screening for CAZymes. In so doing it will highlight both the scientific principles behind the approaches and the creativity of the authors in the development of these methods. Additionally, we will highlight underexplored reaction spaces and anticipated next steps in the field.

### CAZyme fundamentals – a primer

CAZymes are classified within the CAZy database according to their primary reaction type.<sup>22</sup> The largest and best studied of these are the glycoside hydrolases (GHs), which hydrolytically cleave glycosidic linkages (Fig. 1a–c). Also included are polysaccharide lyases (PLs) which degrade uronic acid-containing polysaccharides *via* a non-hydrolytic elimination mechanism (Fig. 1d). The enzymes primarily responsible for carbohydrate synthesis are the glycosyltransferases (GTs) which generally synthesize glycosides through transfer from activated nucleotide sugars or lipid phosphate sugars (Fig. 1e). Finally, the classification includes carbohydrate esterases (CEs) which hydrolyze ester and amide linkages on carbohydrates (Fig. 1f), and auxiliary enzymes (AAs) which catalyze diverse oxidative chemistries involved in the degradation of carbohydrates and associated structures such as lignin (Fig. 1g).<sup>23</sup> Carbohydrate binding modules (CBMs) are also classified within the CAZy database but do not themselves have catalytic activity. Rather they improve the activity of CAZymes against their substrates by improving binding, especially for polymeric substrates.<sup>24</sup> The general reactions carried out by these CAZymes and select mechanisms for these CAZymes are shown in Fig. 1. Where appropriate, the mechanisms will be discussed within this review as they are necessary to understand certain screening methodologies. For more detailed explanations of these enzymatic mechanisms and others not included here, interested readers are directed to other recent reviews.<sup>18,25,26</sup>

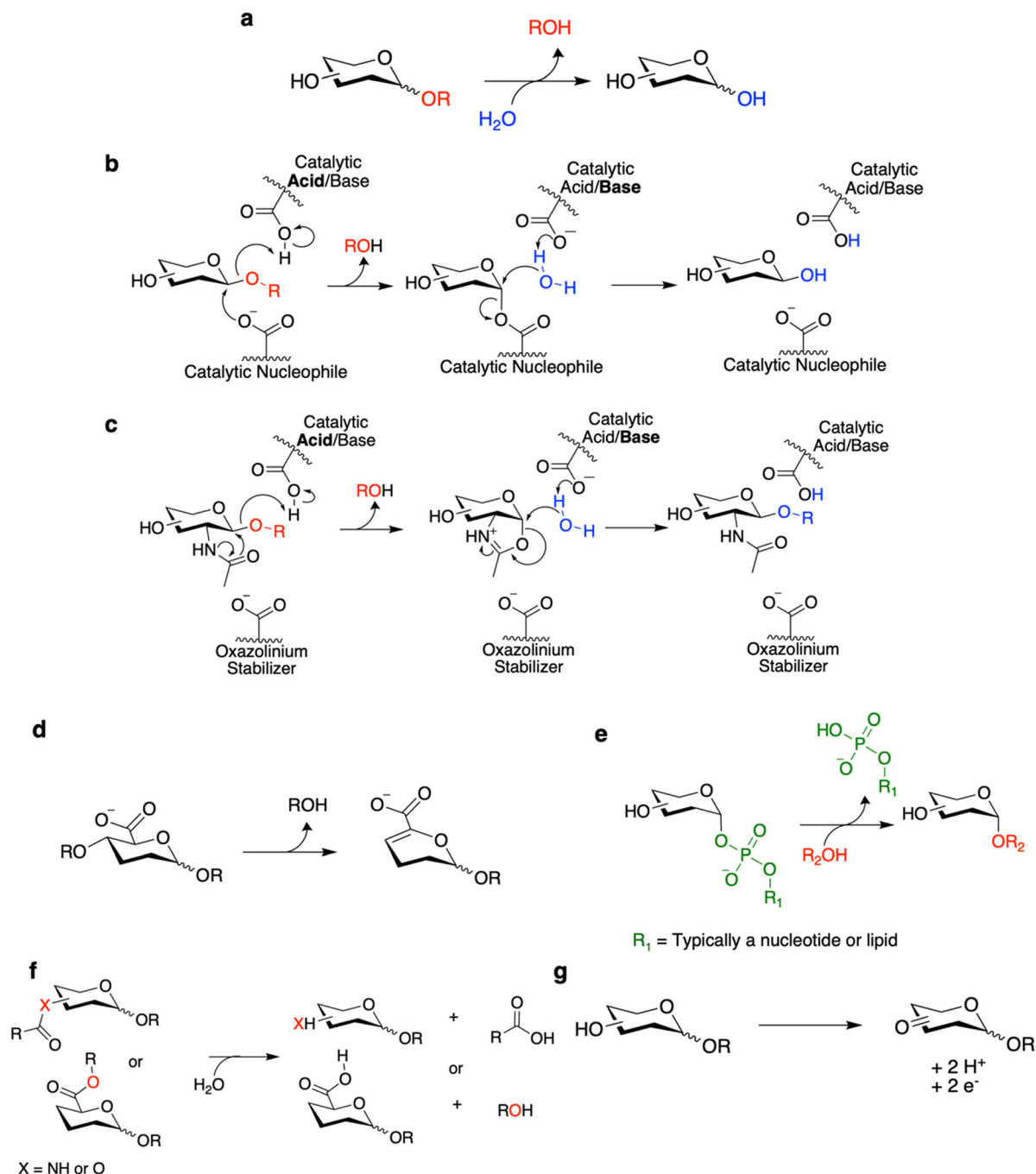
Outside of these primary classifications within the CAZy database are enzymes such as transglycosylases (TGs) and glycoside phosphorylases (GPs). TGs are mechanistically similar to GHs and classified within GH families. Rather than hydrolysis of glycosidic linkages, TGs preferentially catalyze the transfer of sugars to different non-water acceptors.<sup>27</sup> TGs have been of great interest for carbohydrate synthesis as they do not require the same costly sugar donors as GTs since they can often use relatively inexpensive feedstocks such as sucrose.<sup>9,27,28</sup> GPs catalyze the reversible phosphorolysis of carbohydrates and are found in several GH and GT families.<sup>29</sup> The reversibility of this reaction is of synthetic utility as one can drive glycan synthesis through use of an excess of relatively

accessible sugar-1-phosphates and/or removal of phosphate or glycan polymer product.<sup>30</sup>

While GHs are useful for a number of purposes – principally glycan degradation – the engineering of GHs as biosynthetic catalysts bestows additional utility. Towards this end, classes of redesigned enzymes such as glycosynthases<sup>31</sup> and (thio)glycoligases<sup>32</sup> have been developed (Fig. 2a and b). Both of these classes of enzymes were developed by the Withers laboratory based upon a mechanistic understanding of GHs in order to create mutants that are crippled hydrolytically but can perform glycan synthesis with the appropriate substrates.<sup>31,32</sup> Use of these engineered enzymes may be preferred over GTs – the natural enzymes for glycan synthesis – since these mutant GHs are typically easily expressed and do not need expensive nucleotide/lipid-linked donor sugars for glycan biosynthesis. While this may also be true of TGs, an advantage of these engineered enzymes is that they do not degrade their reaction products – and can thus offer improved yields.<sup>28</sup> Classically, glycosynthases and (thio)glycoligases can be developed from GHs through mutagenesis of the catalytic nucleophile and the catalytic acid/base residues respectively.<sup>31,32</sup>

Glycosynthases accomplish glycoside bond synthesis by using a glycosyl fluoride (1-fluoro sugar) of the opposite anomeric configuration to that of their native substrate (Fig. 2a).<sup>28,31</sup> This activated sugar mimics the glycosyl-enzyme covalent intermediate found in the mechanism for retaining GHs (Fig. 1b), setting the enzyme up to accept different nucleophiles and form new glycosidic linkages.<sup>28</sup> The glycosynthase concept has found widespread use for variants of Koshland GHs that carry out their reaction through a neighbouring group participation mechanism involving an oxazoline intermediate (Fig. 1c and 2b). Mutants of such enzymes lacking the oxazoline-stabilising residue can carry out glycosyl transfer using an oxazoline-bearing glycan donor, but are unable to hydrolyse the product so formed.<sup>28</sup> These oxazoline donors can be readily prepared from glycans bearing an *N*-acetyl sugar at the reducing end using a mild and selective chemical reagent.<sup>33</sup> And so, in this way, complex glycan donors – often derived from *N*-glycans that have been synthesised or isolated from natural sources – can be prepared and used in the synthesis of a variety of products, most notably glycoproteins.<sup>28</sup>

Thioglycoligases are mutant retaining glycosidases missing their acid/base residue. When reacted with a glycan donor containing a leaving group such as DNP or F that does not need acid catalysis, they rapidly form the glycosyl-enzyme intermediate (Fig. 2c).<sup>32,34–37</sup> However, in the absence of the catalytic base, these enzymes are unable to efficiently turn over the covalent intermediate through hydrolysis. However introduction of a good nucleophile – such as a thiol – that does not need base catalysis results in ready turnover and formation of new thioglycosidic bonds.<sup>32,34–37</sup> A further variation on this theme is that of the *O*-glycoligases, which are again mutants at the acid/base position.<sup>38,39</sup> To date only mutants of  $\alpha$ -glycosidases have been shown to react usefully with oxygen nucleophiles, thus to function as *O*-glycoligases. This is thought to be due to the higher reactivity of the



**Fig. 1** General reactions and mechanisms of CAZymes. (a) General reaction catalyzed by GHs. (b) The Koshland retaining GH mechanism which is generally followed by many GHs. (c) A variation upon the retaining GH mechanism utilized by certain hexosaminidases. General reactions catalyzed by (d) PLs, (e) GTs, (f) CEs, and (g) AAs. Note that there are variations upon these mechanisms depending upon the enzyme of interest. As well, for simplicity only a single stereochemical configuration is generally shown. In many cases, the initial stereochemistry of the reactants and the ultimate stereochemical outcome will differ depending upon the enzyme and the reaction catalyzed.

$\beta$ -glycosyl-enzyme intermediate than its alpha counterpart.<sup>38</sup> Further combining these approaches, thioglycosynthases have also been developed through mutation of both catalytic residues.<sup>40</sup> However, their application has been relatively limited due to their low reactivity. While this review covers efforts to evolve and improve these enzymes, interested readers are directed to other recent reviews for a more thorough

interrogation of the transformations which can be catalyzed by these enzymes.<sup>18,28</sup>

#### An overview of different modes of screening

Microtitre plate-based screening is the most common and widespread method for high-throughput screening of CAZymes. Most glycosidases can be screened for using

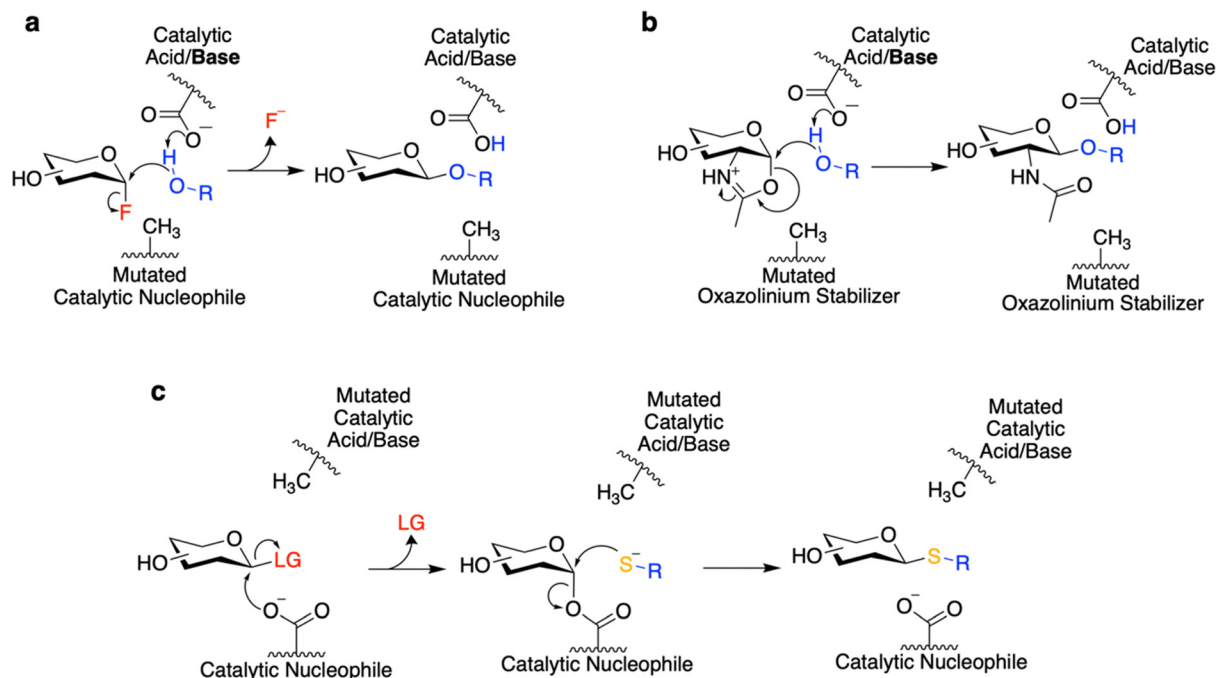


Fig. 2 Mechanisms of glycosynthases and thioglycosylases. (a) Mechanism utilized by the classical glycosynthases derived from a retaining GH. (b) Mechanism for a glycosynthase derived from an *N*-acetylhexosaminidase which uses neighboring group participation. (c) Mechanism of a thioglycosylase. Note that LG denotes a good leaving group.

commonly available substrates whereby the release of a chromophore from the anomeric position produces a change in absorbance and/or fluorescence.<sup>41–44</sup> Such substrates have been used extensively in functional metagenomic screening and directed evolution and form the bedrock for most GH screens. In the absence of available chromogenic glycoside substrates, variations upon this have also measured reducing end formation upon glycoside cleavage. This is commonly carried out with detection systems such as the DNS assay, allowing use of natural carbohydrates or glycoproteins as substrates.<sup>45–47</sup> One of the great benefits of plate-based screening is that many different methods of detection and sample manipulation are possible. While too numerous to list all examples, we have highlighted some interesting versions based upon this basic concept throughout this review.

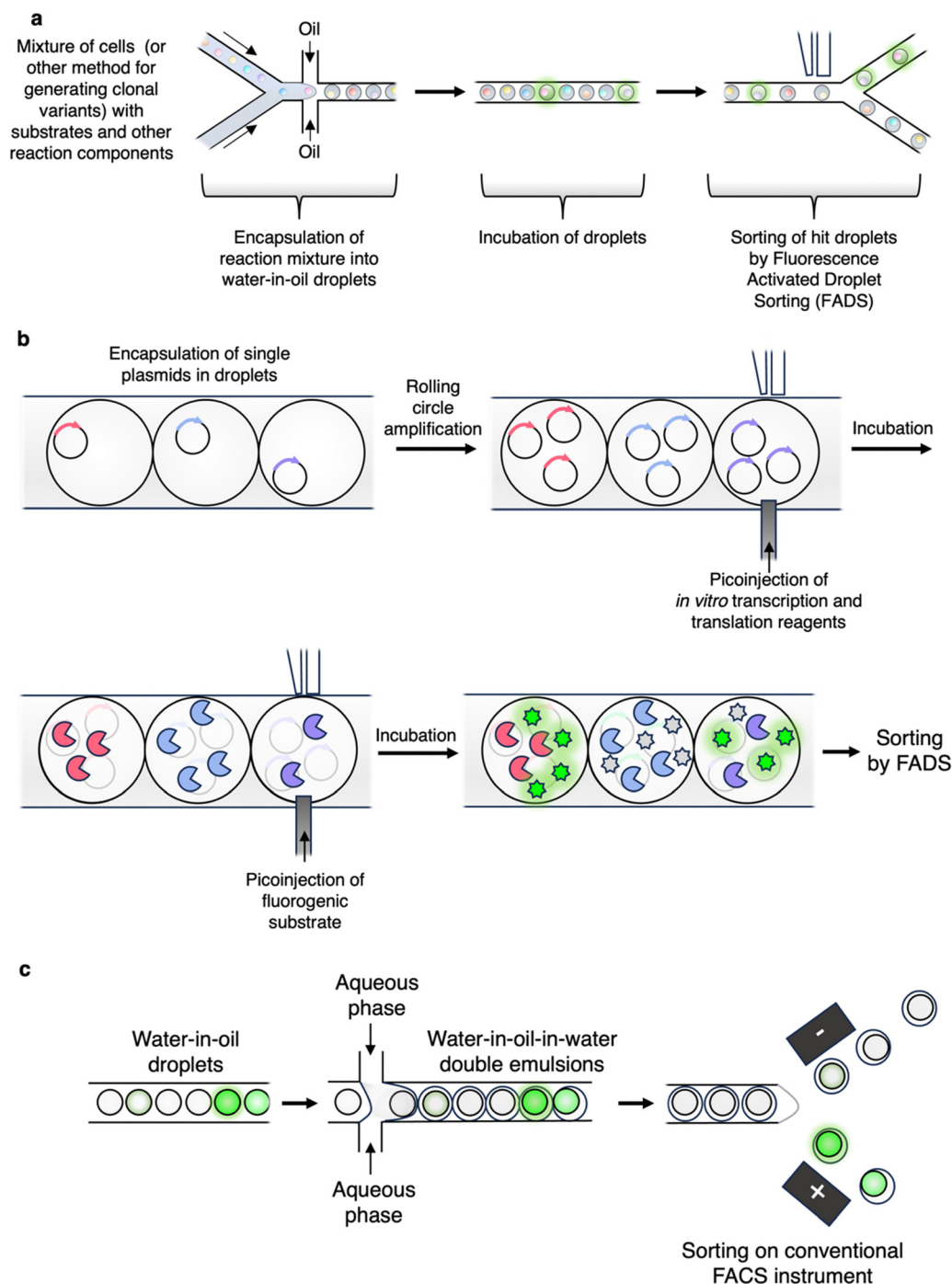
In the absence of a colorimetric screening method, HPLC offers a near universal (albeit time intensive) detection method for carbohydrate modification. Desmet and colleagues have shown the power of this technique for monitoring the effects of modification of TGs in the formation of rare sugars from sucrose.<sup>9,48</sup> These products are inherently difficult to screen for as the detection method must be able to distinguish the different stereo- and regioisomers which can be formed.<sup>9,48</sup>

Agar plate assays provide an accessible method for semi-quantitative screening. Many researchers will be familiar with the use of compounds such as X-Gal to detect  $\beta$ -galactosidase activity as part of blue-white screening. However, this approach can be extended for other CAZymes. As a nice example, an entirely new family of sialidases (GH156) was discovered through functional metagenomic screening of a hot spring

library using X-Neu5Ac-containing agar plates.<sup>49</sup> Other options exist such as halo assays with indicators such as Congo Red to detect polysaccharide degradation,<sup>50,51</sup> or through incorporation of dyed carbohydrates into the media (often carbohydrates with conjugated azo dyes).<sup>52–54</sup> An advantage of such screens is that they enable use of a near native substrate. While many approaches are purely qualitative, more quantitative screens have also been carried out using these methods. For example, transglycosylation activities have been engineered using screens based upon a comparison of reaction velocities in the presence/absence of a suitable acceptor.<sup>55</sup> While these agar plate screens tend to use a large amount of material, they do enable screening of many variants relatively easily.

With the availability and expertise of suitable core facilities in many institutes, FACS offers an accessible method for ultrahigh-throughput screening of many enzymatic activities. The throughputs of FACS are typically on the order of  $>10^3 \text{ s}^{-1}$  enabling ready screening of very large libraries.<sup>56</sup> Further benefits of FACS includes an ability to easily multiplex reactions, limited specialized equipment needed to conduct the screen, and quantitative results. A typical FACS screen will involve either production/trapping of a fluorescent signal within the cell or at its cell surface.<sup>56</sup> While this does make it amenable to many purposes, it does complicate certain screens as it can require efficient uptake of substrates or surface display and capture of enzymes/substrates, which can be non-trivial.

Of considerable recent interest in the CAZyme engineering space has been the use of microfluidic technologies, of which droplet-based microfluidics has been the most widely adopted.<sup>57</sup> In most studies, aqueous reaction mixtures



**Fig. 3** A selection of droplet microfluidic workflows used to screen for enzymatic activities. (a) Typical workflow employed for droplet microfluidic screening. Note that FADS requires specialized equipment. (b) Droplets can be readily manipulated as demonstrated in the workflow employed by Holstein *et al.* to screen for improved protease variants.<sup>60</sup> (c) A common workflow for generation of double emulsion droplets for subsequent sorting on widely available FACS instruments.<sup>59,66</sup>

containing single clones are encapsulated within an oil medium that acts in the same manner as the walls of a microtiter plate (Fig. 3a).<sup>58</sup> The assay is then allowed to proceed in the droplet with subsequent sorting of hits based upon formation of a fluorescent signal (Fig. 3a). A number of other methods (*e.g.* absorbance, fluorescence anisotropy, mass spectrometry,

*etc.*) to measure activity within droplets have also been developed.<sup>57</sup> As well, technologies such as pico-injection and controlled droplet merging allow for further manipulation of droplets and the performance of complex reactions and screens (Fig. 3b).<sup>57</sup> Thus, at least part of the promise of droplet microfluidics is that the plethora of assays developed for



plate-based screening can be readily adapted for microfluidics and thus conducted at much higher throughputs and with substantially less substrate.<sup>59</sup> A particular advantage of droplet screening is that entry of the substrate into the cell is not necessarily required if the cell can be lysed within the droplet. As an example of the assay complexity possible and the manipulations that can be performed with droplet microfluidics, in work by Holstein *et al.*, a cytotoxic protease was evolved *via* a multistep process (Fig. 3b). This involved encapsulation of single DNA molecules into droplets, followed by rolling circle amplification and *in vitro* transcription and translation steps, and then pico-injection of the substrate with subsequent sorting by FADS (Fig. 3b).<sup>60</sup> As a key point for screen adaptation, in general, it seems that charged substrates and products are required for effective retention within droplets.<sup>61,62</sup> While the exact mechanism of fluorophore exchange is not known, certain commonly used hydrophobic, un-charged fluorophores (*e.g.* hydroxycoumarin and resorufin derivatives) can diffuse into the oil or between droplets under certain conditions – thus leading to loss of genotype-phenotype linkage.<sup>61,62</sup> Besides changes to the fluorophore itself, optimization of screening conditions (*e.g.* pH, surfactant concentration, inclusion of other additives) can also improve fluorophore retention.<sup>57,59</sup>

It should be noted that, while microfluidic screens require more technical expertise and set-up compared to FACS assays, they also offer considerable flexibility and open the door to entirely new ways of screening and characterisation. For example, in a recent study, Markin *et al.* were able to carry out the near simultaneous high-throughput kinetic characterization ( $k_{\text{cat}}$ ,  $K_M$ ,  $K_i$ ) of thousands of enzyme variants with different substrates (albeit this was achieved using a complex microfluidic chip rather than droplets for compartmentalization).<sup>63</sup> Even absorbance-based assays, which cannot be done by FACS but are widely used in plate-based screens, are possible with microfluidics.<sup>64,65</sup>

While microfluidics does require some specialized expertise, strides towards democratization of the methodology and more widespread use have been made with the development of double-emulsion (water/oil/water) droplet systems (Fig. 3c).<sup>59,66</sup> These double emulsions are relatively straightforward to produce and can be sorted on widely available conventional FACS instruments – thus making droplet microfluidics available to those without experience in droplet sorter design or engineering.<sup>66</sup> A nice example of this being used for CAZyme discovery is the work by Tauzin *et al.* wherein they applied the approach to the discovery of new  $\beta$ -GalNAcases.<sup>59</sup> There are many further interesting examples of the applications of droplet microfluidics which are beyond the scope of this review. Interested readers are thus directed to the excellent recent review by Gantz *et al.* on the use of microfluidics for enzyme discovery and engineering.<sup>57</sup>

### Using mechanistic differences to identify enzymes

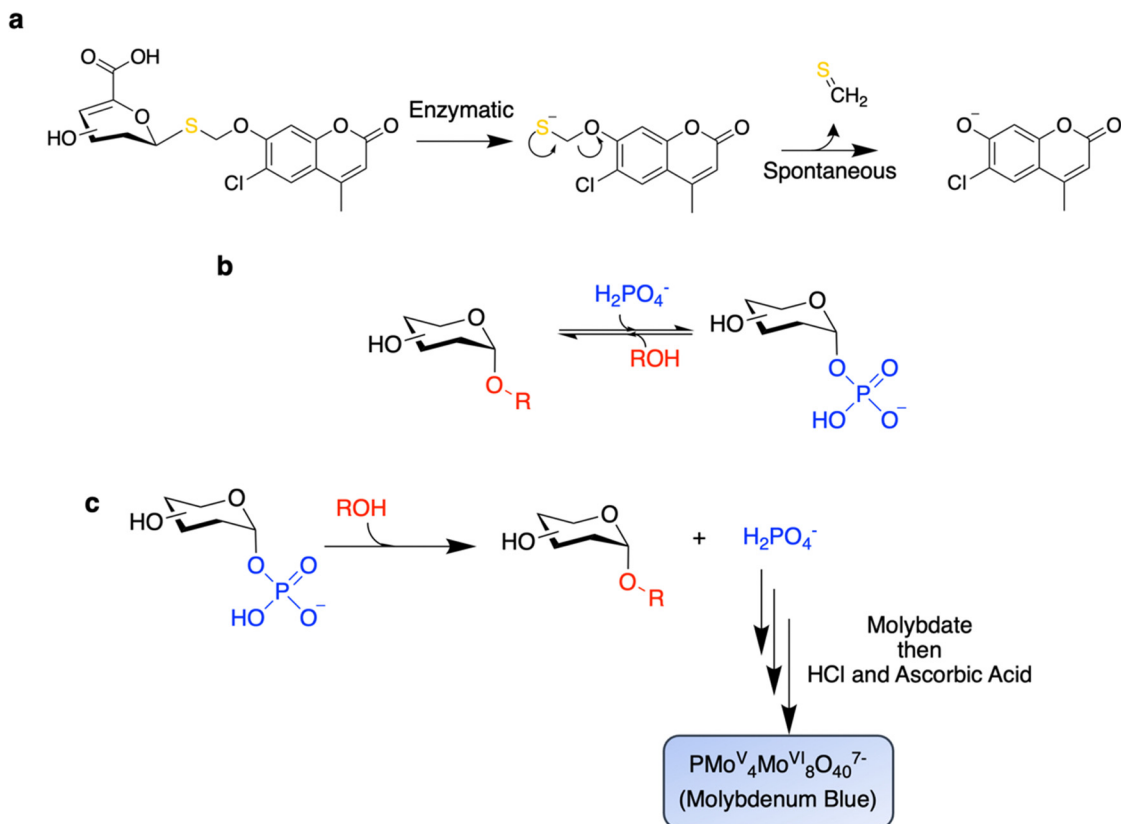
Nasseri and colleagues offered up an inventive method for the selective identification of GHs that do not follow the canonical Koshland mechanisms.<sup>67</sup> This strategy relies on the fact that

Koshland GHs do not catalyze the cleavage of non-activated thioglycosidic bonds.<sup>25,67</sup> In fact, in Nature, carbon-sulfur bonds are generally cleaved enzymatically by elimination mechanisms.<sup>68</sup> Indeed, this is true also for the cleavage of thioglycosides which is nicely carried out by glycosidases in GH4, GH88, GH105, and GH109, which use elimination mechanisms, as well as by PLs.<sup>25</sup> By use of a thioglycoside substrate in which the chromogen is linked to the 1-thiosugar *via* a self-immolative linker, the authors were able to selectively identify unsaturated glucuronidases (of GH88) in a functional metagenomic screen.<sup>67</sup> Particularly impressive is the fact that this campaign was successful even in the presence of high background activity from the *E. coli* host glucuronidase, which does indeed follow the canonical Koshland mechanism, thereby highlighting the selectivity of these reagents (Fig. 4a).<sup>67</sup> More recently, this approach has been used to identify a surprisingly widespread, but heretofore un-appreciated, set of gene clusters that carry out the degradation of carbohydrates using a mechanism akin to that used by glycosidases of GH4 or GH109.<sup>69</sup> However, intriguingly, each step of the mechanism is carried out by a different enzyme within these gene clusters rather than a single enzyme providing enzyme activities of unprecedentedly broad specificities.<sup>69</sup>

Other differences in enzyme mechanism can also be exploited in screening. Glycoside phosphorylases (GPs) differ from GHs in that inorganic phosphate acts as a nucleophile rather than H<sub>2</sub>O (Fig. 4b). Screens have been successfully applied for enhancements in the rate of substrate cleavage in the presence of phosphate in order to distinguish GPs from GHs.<sup>44,70</sup> In a remarkable demonstration of the power of this technique, Franceus and colleagues were able to readily convert a GH to a GP *via* site-saturation libraries at “gatekeeping” residues with screens for rate enhancement upon addition of Pi.<sup>70</sup>

Owing to the near equal free energies of sugar-1-phosphates and oligosaccharides, reactions catalyzed by GPs are also readily reversible (Fig. 4b). This reversibility also allows for screening by measurement of the release of inorganic phosphate from sugar phosphate substrates using the molybdenum blue assay (Fig. 4c).<sup>71,72</sup> This approach has been successfully applied to the directed evolution of a cellobiose phosphorylase to expand acceptor specificity,<sup>72</sup> as well as in the screening of metagenomic libraries<sup>71</sup> and synthetic gene libraries<sup>73</sup> for GP activity. A key benefit of screening for reverse phosphorolysis is that the acceptor and donor pairs can be readily varied to rapidly probe substrate specificities.<sup>73</sup> This approach enabled the discovery of the GlcNAc- $\beta$ 1,3-GlcNAc biopolymer – acholetin – from the activity of its corresponding GP from *Acholeplasma laidlawii*.<sup>73</sup>

PLs are a class of CAZyme that degrades uronic acid-containing substrates *via* a unique catalytic mechanism involving eliminative cleavage of the C4-oxygen bond to the sugar on the non-reducing side. However, they have been largely unexplored in protein engineering. PL activity can be assayed by monitoring the formation of the unsaturated uronic acid product *via* its absorbance at 235 nm (Fig. 1d).<sup>7</sup> This method, while allowing use of natural substrates, suffers from low

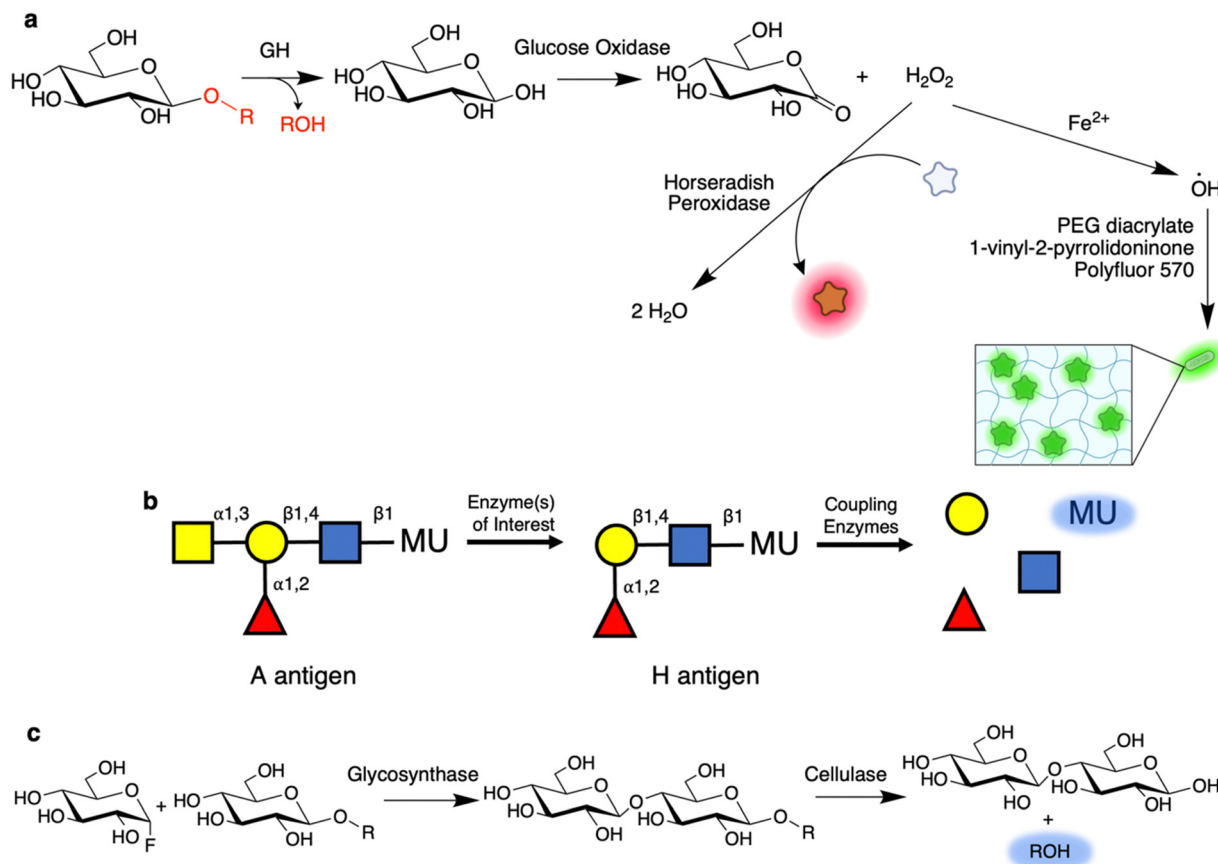


**Fig. 4** Applying mechanistic differences to screen for distinct enzyme activities. (a) Use of an unactivated thioglycoside substrate enables selective identification of non-Koshland GHs. In this screen, the released hemithioacetal undergoes a self-immolative reaction to produce a fluorescent signal. (b) GPs catalyze the reversible reaction between an oligosaccharide and the corresponding glycosyl phosphate. (c) GPs can be screened for production of free phosphate in the presence of a suitable glycosyl phosphate and glycan acceptor. In this assay, the released phosphate is detected via the Molybdenum Blue reaction.

sensitivity, and is likely susceptible to interference from other assay components. Agar plate-based assays based upon halo formation in carbohydrate-containing media are also frequently used, though these are not specific for PLs.<sup>50,54,74</sup> Nevertheless, combinations of these techniques have been used successfully. This is nicely demonstrated by Solbak *et al.*'s work in which they used azo-rhamnogalacturonan to detect pectinase and pectate lyase activity in an agar plate-based screen of a metagenomic library.<sup>54</sup> They subsequently applied directed evolution to the best pectate lyase to enhance its thermostability and activity by monitoring activity on polygalacturonic acid after heat treatment. This process yielded variants with up to 16 °C increases in protein  $T_M$  and 20 °C increases in temperature optima (from 50 °C to 70 °C).<sup>54</sup> Thermostable PLs could be useful in applications such as textile processing where harsh, environmentally damaging, alkali solutions are otherwise used.<sup>54</sup> Curiously, there has been limited application of artificial chromogenic substrates of PLs which might offer easier detection. Such substrates have been described by Rye *et al.* and were used in the determination of the catalytic mechanisms of these enzymes.<sup>75,76</sup> Moreover, these substrates are selective for PLs over GHs as the chromophore is attached to the C4 hydroxyl rather than at the anomeric position.<sup>75,76</sup>

### Coupled assays enable screening of (near)-native substrates

One of the principal benefits of coupled assays is that they enable the user to screen using substrates closer in structure to that of the natural substrate than to the simpler aryl glycosides. A fruitful line of work has been the use of oxidoreductases to screen for GH activity.<sup>77–80</sup> For example, cleavage of cellulose with the appropriate enzymes might result in production of free glucose. This glucose can then be readily oxidized by glucose oxidase to produce  $\text{H}_2\text{O}_2$  which can be detected by further reaction with horse radish peroxidase and a dye or by some other method of detection (Fig. 5a).<sup>77</sup> The Schwaneberg laboratory has further elaborated upon this with a FACS-based screen<sup>79,81</sup> wherein the production of  $\text{H}_2\text{O}_2$  by glucose oxidase initiates localized polymerization of PEG-diacrylate and *N*-vinyl-2-pyrrolidone along with fluorescent acrylic monomers (*e.g.* Polyfluor 570) to form a fluorescent hydrogel around the cell (Fig. 5a).<sup>79,81</sup> This can subsequently be sorted using a conventional cell sorter. In addition to cellulases, Lülldorf *et al.* showed that the method can be further used to screen for CEs through use of glucose pentaacetate as a substrate.<sup>81</sup> Alternatively, detection of  $\text{H}_2\text{O}_2$  production can be used to directly screen for oxidases. Many campaigns have applied this approach to evolve galactose-6-oxidase such that it is active



**Fig. 5** Coupled reactions enable high-throughput screening with highly relevant substrates. (a) Overview of a common coupled assay in which glucose is subsequently oxidized by glucose oxidase to form gluconolactone and  $\text{H}_2\text{O}_2$ .  $\text{H}_2\text{O}_2$  can then be detected by use as a substrate for horseradish peroxidase along with a dye co-substrate. Alternatively, the produced  $\text{H}_2\text{O}_2$  can also be used to initiate polymerization of a fluorescent hydrogel around the enzyme-producing cells for subsequent sorting.<sup>79,81</sup> (b) Coupled assay used to screen for blood group converting enzymes. In this, once the initial GalNAc is removed, thereby converting the A antigen to the H antigen found in O-type blood, a series of coupling enzymes sequentially degrade the remaining trisaccharide to produce a fluorescent signal. (c) A coupled assay for use in screening for glycosynthases. As shown, a glucosynthase is used to produce a chromogenic cellobioside substrate. This cellobioside, but not the parent glucoside, can then be cleaved by an endo-acting cellulase to produce a fluorescent signal.

against other sugars such as glucose, mannose, GlcNAc, and Neu5Gc.<sup>82–84</sup> Recently, it has been shown that this form of oxidase screening is also amenable to droplet microfluidics.<sup>85</sup>

More recent work by the Hollfelder laboratory has expanded this approach by using sugar dehydrogenases to enable measurement of the release of free sugars such as glucuronic acid, xylose, and galactose.<sup>78,86</sup> This method uses the reduction of NAD(P)H by these enzymes during sugar oxidation to initiate an enzymatic cascade that results in reduction of a tetrazolium derivative (WST-1) to form a UV/Vis absorbent formazan.<sup>78</sup> Ladeveze *et al.* show in their proof of concept that enzymes active on beechwood xylan, wheat arabinoxylan and xylobiose can be detected and that absorbance-activated droplet sorting can be used to sort active clones.<sup>78</sup> Innovative work from the same laboratory offers further improvement through development of a highly sensitive fluorescence assay which operates under similar principles. In brief, the production of NAD(P)H by the sugar dehydrogenase is then coupled to the reduction of glutathione disulfide to glutathione by glutathione reductase.<sup>86</sup>

This free reduced glutathione can then release a quenched carboxy-coumarin fluorophore through nucleophilic cleavage of a sulfonic ester.<sup>86</sup> The resulting fluorescent signal offers a much lower limit of detection compared to the absorbance based assay.<sup>86</sup> This approach should prove useful in enzyme discovery campaigns *via* methods such as functional metagenomics where low enzyme expression levels are common.

Many GHs derive specificity from key interactions with both the components at the non-reducing end of the glycan *and* the reducing end (within their +1, +2, *etc.* subsites). Consequently, certain enzymes do not effectively recognize common chromogenic substrates, even if the enzymes are exo-acting.<sup>10,87</sup> Such difficulties can be readily overcome through use of coupled assays with oligosaccharide substrates. An excellent example is in a screen utilized during the discovery of the blood group-cleaving GalNAc deacetylase and GH36 exo- $\alpha$ -GalNase by Rahfeld and colleagues (Fig. 5b).<sup>10</sup> In this coupled assay, the terminal GalNAc is removed to expose a trisaccharide substrate which can then be degraded by added enzymes, in this case a



fucosidase, galactosidase, and *N*-acetylhexosaminidase, to release the fluorophore. A similar approach had been previously applied by Kwan and colleagues for the directed evolution of a broad specificity blood group A cleaving enzyme from a *Streptococcus pneumoniae* GH98.<sup>11</sup> Notably for the GH36 GalNase, this enzyme has almost 1000-fold lower activity against GalN-pNP as compared to a more natural substrate based on a blood group antigen tetrasaccharide.<sup>10</sup>

Coupled assays have also found use in screening for enzymes that assemble glycosides. In the general scheme introduced by Mayer and colleagues, the chromogenic substrate is cleaved by the coupling enzyme(s) only when the desired product – with both correct stereo- and regio-chemistry – is produced (Fig. 5c).<sup>88</sup> This stands in contrast to indirect measurements such as enzymatic turnover or generalized product formation. This approach has been applied for the directed evolution of glycosynthases,<sup>89</sup> and thioglycoligases.<sup>34</sup> In both of these examples, the biosynthetic exo- $\beta$ -glucosidase mutant produces a substrate for an endo-cellulase, resulting in ultimate fluorophore release (Fig. 5c).<sup>34,89</sup> Interestingly, during the directed evolution of the Abg exo- $\beta$ -glucosynthase by this approach, the identified mutations recapitulated interactions lost in creation of the glycosynthase mutant.<sup>89</sup> It seems that by removing the catalytic nucleophile for creation of the glycosynthase, key interactions with the C2 hydroxyl (which are typically quite strong<sup>90</sup>) were also lost and only restored upon directed evolution.<sup>89</sup> Excitingly, the best mutant from this screen turned over the glycosyl fluoride substrate with Glc- $\beta$ -pNP as an acceptor with a  $k_{\text{cat}}$  value over 1000-fold higher than the starting mutant and comparable to that for the native enzyme's hydrolysis of Glc- $\beta$ -pNP.<sup>89,91</sup> Such work highlights the ability of directed evolution campaigns to provide new understanding of how enzymes work.

### Glycosyltransferase assays

While GHs are likely the best studied and engineered class of CAZymes, a number of assays for GTs have also been developed and implemented allowing high throughput engineering. In fact, some GT activities can be monitored using activated chromogenic substrates in a manner similar to those of many screens for GHs. In these assays, the GT of interest generates their nucleotide sugar donors *in situ* upon being presented with activated substrates of the opposite anomeric configuration to that of their nucleotide sugar donors (*e.g.* Neu5Ac- $\alpha$ -pNP and Neu5Ac- $\beta$ -CMP) and a catalytic amount of the corresponding nucleotide (Fig. 6a).<sup>92</sup> This *in situ* generation of nucleotide sugar donor results in the release of a small amount of chromophore. In the presence of a suitable acceptor, the required nucleotide can be regenerated, and so the enzyme can carry out repeated turnovers of the chromogenic substrate, thereby enabling direct detection of catalytic activity. Alternatively, GTs can also be used to glycosylate hydroxyl groups on fluorescent molecules (commonly 4-methylumbelliferone) such that the enzymatic modification results in loss of fluorescence.<sup>93,94</sup> This latter approach has been applied to both GTs<sup>94</sup> and *O*-glycoligases.<sup>95</sup> These methodologies have been

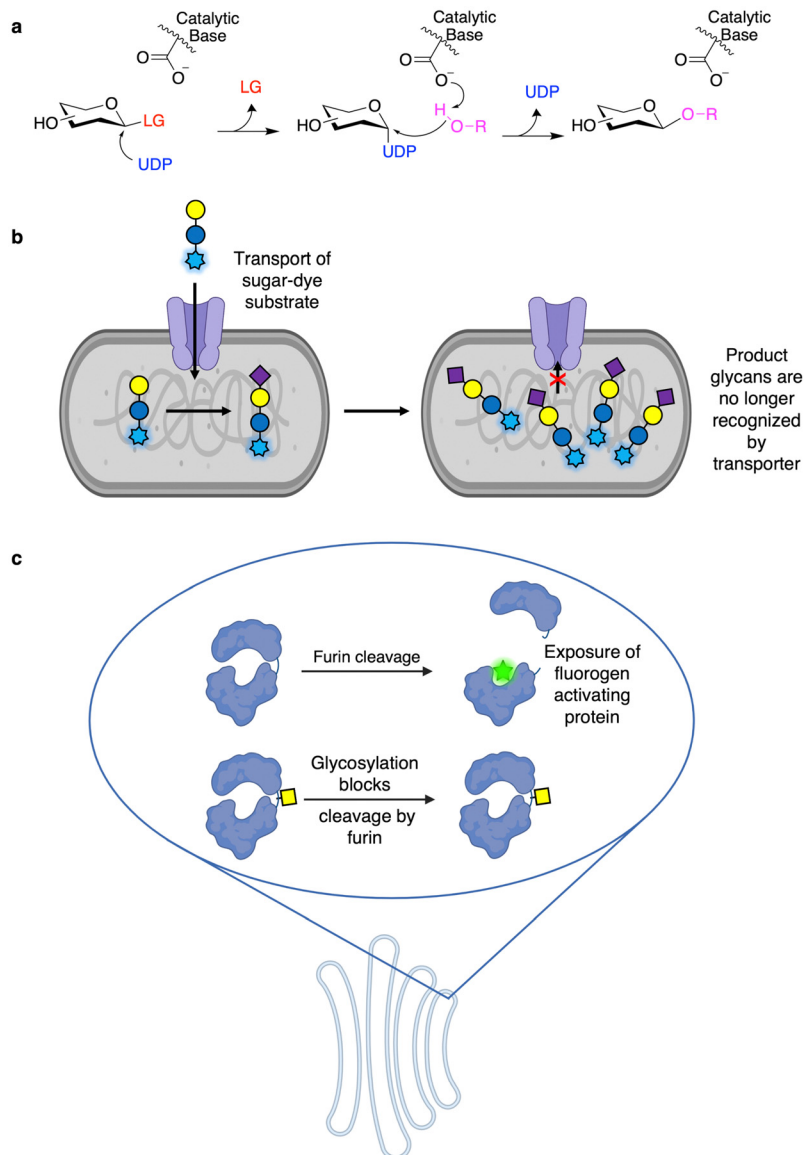
useful not only in screening the donor and acceptor specificity of GTs<sup>96,97</sup> but also in directed evolution. In particular, OleD from *Streptomyces antibioticus* has been evolved to produce diverse nucleotide sugars using this method.<sup>98</sup> As well, the approach has been further extended to GT evolution for the glycorandomization of natural products.<sup>93,94</sup>

Fundamental work on the screening of CAZymes by FACS includes the generalizable GT assay developed by Aharoni and colleagues.<sup>99</sup> In this method, a glycoside conjugated to a fluorophore is transported into the cell *via* a sugar transporter (Fig. 6b). The fluorescent substrate is then glycosylated in the cell by the GT of interest and, once so modified, is no longer recognized by the transporter, resulting in accumulation of fluorescent substrate within cells containing active enzymes, which can then be sorted by FACS.<sup>8,99,100</sup> This method has been applied to the directed evolution of sialyltransferases, galactosyltransferases, and fucosyltransferases.<sup>8,99,100</sup> In an example of “you get what you screen for”, the initial iteration of this methodology resulted in the development of a hydrophobic binding pocket on the enzyme to which the dye moiety could bind, thereby improving reaction rates.<sup>99</sup> This has been avoided in subsequent studies through the simultaneous use of two chemically distinct dyes such that the enzyme is not selected just through improved dye binding.<sup>100</sup> While thus far this method has only been applied towards galactoside substrates (as transported by LacY), expression of different sugar transporters may further enhance the substrate scope of this method.

In mammalian cells, processing steps in the protein export pathway can be exploited for screening. In the approach developed by the Lindstedt laboratory, loss of *O*-glycosylation can be detected by furin cleavage of the aglycosylated protein within the *trans* Golgi network to reveal a fluorogen-activating protein (Fig. 6c).<sup>101,102</sup> This has been used to probe compartmentalization of enzymes within the Golgi apparatus, the roles of different glycan biosynthesis genes, as well as in the identification of inhibitors of mucin-type *O*-glycosylation.<sup>101,102</sup> While this method has not been used for directed evolution – and directed evolution is typically much more difficult in mammalian cells compared to bacteria or yeast<sup>103</sup> – this does offer a useful method for engineering enzymes in a meaningful environment. This is especially the case since it offers access to enzymes which may be recalcitrant to recombinant expression in microbial systems.

### Glycan binding proteins for product detection

Most glycoconjugates are extracellular. This simple fact enables convenient screening methods through use of fluorescently labelled binding proteins. Such methods can readily use FACS for facile ultrahigh-throughput screening (Fig. 7). For example, polysialyltransferase activity can be screened by FACS through use of a GFP-fused inactive polysialic acid hydrolase for product detection.<sup>104</sup> Similarly, ultrahigh-throughput screening for enhanced production of eukaryotic *N*- and *O*-glycans in *E. coli* has also been explored by FACS.<sup>105,106</sup> In these methods, a



**Fig. 6** A selection of screens used for GTs. (a) Use of activated donors to screen for GT activities. In this assay, the GT catalyzes the formation of a nucleotide sugar when presented with a sufficiently activated glycan donor and a catalytic amount of nucleotide. This results in the release of a small amount of chromophore from the activated sugar. In the presence of a suitable glycan acceptor, the nucleotide can be regenerated multiple times resulting in readily detectable release of chromophore. (b) The general method for GT screening by FACS. In this method, fluorescently labeled sugars are taken up by a transporter-mediated mechanism. They are subsequently modified by the GT of interest resulting in a product that cannot be recognized by the transporter, hence the accumulation of a fluorescent product. This allows FACS sorting of cells containing active enzyme. (c). Use of mammalian processing pathways for GT activity screening. In this approach glycosylation of a furin cleavage site results in protection from furin cleavage within the Golgi apparatus. However, if no glycosylation occurs, the protein can be cleaved to expose a fluorogen-activating protein for subsequent labeling.

fluorescently labelled lectin or antibody is used to probe cell surface glycosylation.

The DeLisa group has also developed a method for improvement of bacterial oligosaccharyltransferases (OSTs) wherein secreted glycoproteins are detected by immunoblotting.<sup>107</sup> This offers a potential improvement over cell-based screens as the assay is not confounded by the build-up of lipid-linked oligosaccharides which may be present in the cell membrane. Bacterial OSTs are useful for *en bloc* transfer of a number of different glycan structures, including eukaryotic *N*-glycans,<sup>108</sup>

to Asn residues within a D/E-X-N-X-S/T consensus sequence.<sup>109</sup> Relaxation of this specificity is desirable as it allows for use of OSTs with more diverse protein targets including eukaryotic proteins. Ollis *et al.* were able to apply this immunoblot-based method for the directed evolution of an OST from *Campylobacter jejuni* (PglB) such that it had a more relaxed sequence specificity.<sup>107</sup> This was done through site-saturation mutagenesis of two Arg residues thought to form salt bridges with the D/E in the consensus sequence.<sup>107</sup> In applying this, they were able to engineer PglB such that it recognized the eukaryotic N-X-S/T

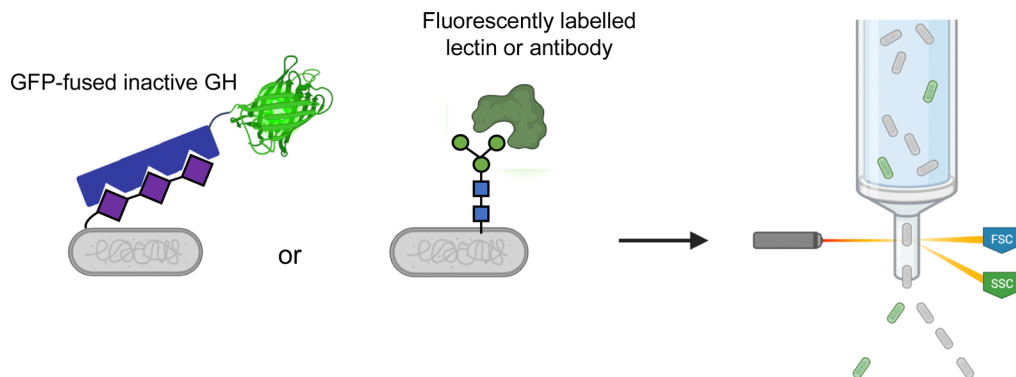


Fig. 7 Use of glycan-binding proteins for FACS-based screening. Inactivated GHs with appended GFP tags or fluorescently labeled lectins or antibodies can be used to label cells carrying the glycans of interest. These cells can then be sorted *via* FACS at ultrahigh-throughputs.

sequon and could carry out effective glycosylation of RNase A with limited activity against the canonical bacterial sequon.<sup>107</sup> This same immunoblotting approach has since been used to identify in-depth how insertion of different glycosylation sites (*via* inclusion of short sequons) affected the function and stability of a number of diverse proteins in a process they coined as “shotgun scanning glycomutagenesis”.<sup>110</sup> Intriguingly, Li *et al.* showed that when shotgun scanning glycomutagenesis was applied to the scFv of an anti-HER2 antibody, a number of sites could be glycosylated in a manner that readily increased the affinity of the scFv for HER2 and/or increased the stability of the protein.<sup>110</sup> Such results and methods open the door to new avenues in the glyco-optimization of therapeutics.

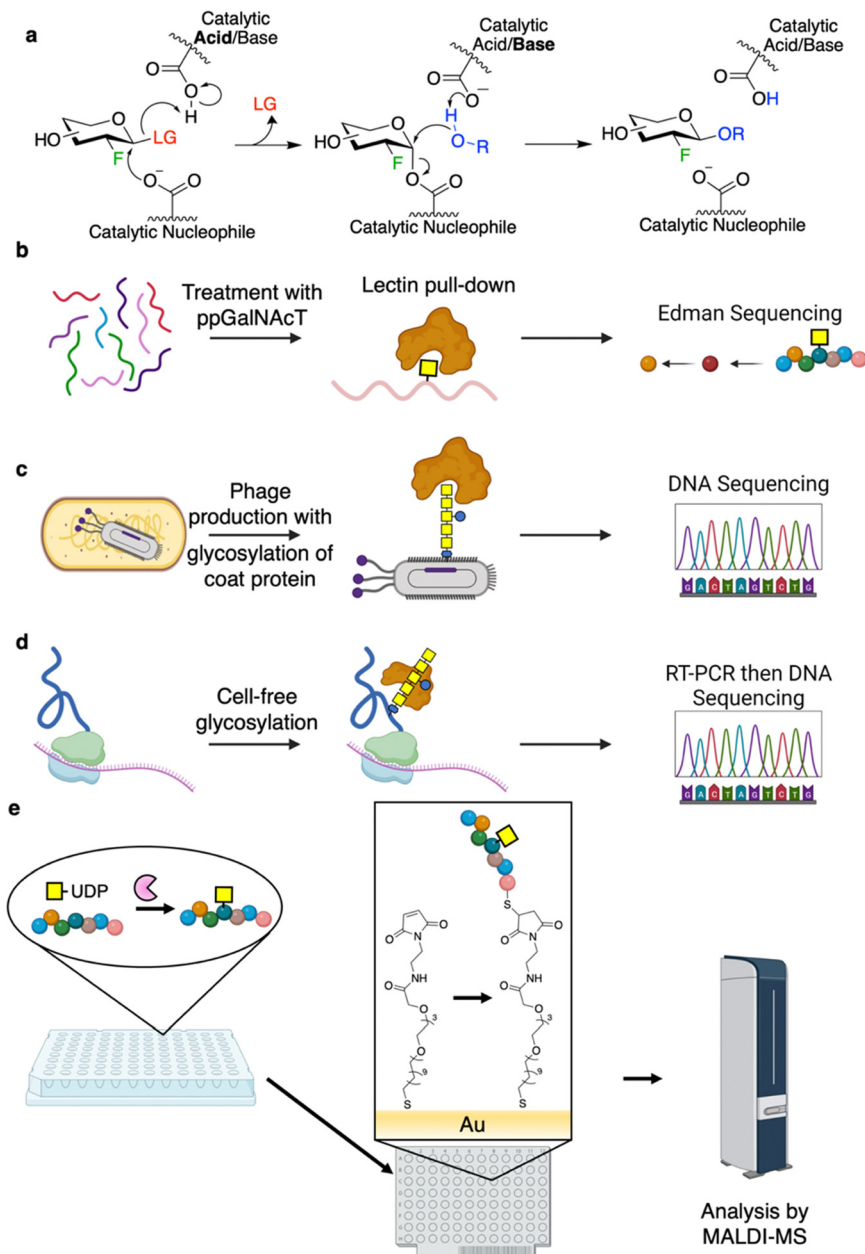
In an interesting case of combining different approaches, Keys and colleagues engineered a polysialyltransferase for the synthesis of well-defined polysialylated proteins with low dispersity.<sup>111</sup> Decreased product dispersity is a difficult enzymatic property to screen for as time-intensive HPLC analysis of the products is the only method with sufficient resolution for the task. To overcome this, Keys *et al.* employed an ingenious neutral drift approach which combined high-throughput screening with lower-throughput characterization by HPLC.<sup>111</sup> Neutral drift is a method for protein engineering in which after the introduction of mutations (often, but not necessarily, at a relatively high rate<sup>111,112</sup>) – rather than screening for variants with higher activity – the experimenter only screens for variants with similar activity to the WT enzyme.<sup>112</sup> Through rounds of neutral drift, one can thus generate a pool of variants that are both highly divergent but still functional – enabling efficient evolution with decreased screening burden.<sup>112</sup> As well, the produced protein scaffolds are often highly evolvable as the high mutational load frequently results in the enrichment of stabilizing mutations.<sup>111–113</sup> For each round of their campaign, Keys *et al.* employed a previously developed colony immunoblotting assay to identify active polysialyltransferases from screens of  $>10^4$  clones in each round.<sup>114</sup> This method does not allow for differentiation of polydispersity, and so for each round, they then analyzed the product profiles of just 100–200 clones by HPLC.<sup>111</sup> Ultimately, in their third round of screening, they characterized just 51 clones by HPLC and identified a

single residue which was able to dictate whether the polysialyltransferases produced products with small or large dispersity. This single residue switch was key in modulating the ability of the enzyme to bind elongated polysialic acid polymers – thus shifting the enzyme between processive and distributive modes of action (and high dispersity and low dispersity product profiles respectively).<sup>111</sup>

Screens using glycan-binding proteins have also been utilized in microtitre plate-based formats. For example, Hancock *et al.* carried out the directed evolution of glycosphingolipid synthase with product detection by use of an ELISA.<sup>115</sup> In this work, they sought to expand the lipid specificity of an endoglycoceramidase glycosynthase mutant originally derived from *Rhodococcus* sp. Strain M-777 (EGC-II). While the naïve glycosynthase is largely sphingosine-specific, they sought to expand this activity towards phytosphingosine, for which the native enzyme has 10 000-fold less activity. This enhancement in activity could then enable use of the enzyme for synthesis of diverse gangliosides. The authors used the GM1-specific Cholera toxin B subunit as the binding protein in the assay. The Cholera toxin B subunit, while specific for the glycan portion of the ganglioside, is promiscuous with respect to the lipid and so ideal for this purpose. Binding of the Cholera toxin B subunit could then be detected by antibody binding coupled to horse radish peroxidase activity. From a screen of 10 000 clones, a single mutation adjacent to the active site drove an 8100-fold increase in its activity towards phytosphingosine while maintaining activity against its native substrate. As a result, the mutant enzyme had near equal activity against sphingosine and phytosphingosine.<sup>115</sup>

### High-throughput substrate screening

While not a traditional aspect of high-throughput screening for CAZymes, the high-throughput identification of preferred substrates for CAZymes is an important component of better understanding the mechanisms and specificities of CAZymes. As well, it opens the possibility of engineering substrates such that they are better recognized by the desired enzymes. For GHs, it is generally easy to identify the preferred non-reducing end glycoside (–1 subsite and beyond), but considerably more



**Fig. 8** Methods for high-throughput substrate screening. (a) Use of a 2F-sugar inactivator to identify preferred reducing end substituent. In this assay, the enzyme is inactivated using a 2F-sugar inactivator, through accumulation of a glycosyl-enzyme intermediate. Enzyme activity can be recovered by transglycosylation in the presence of acceptors that bind productively in the aglycone site. (b)–(d) Affinity-based methods to identify preferred substrates for polypeptide glycosylating proteins. In (b) a pool of random peptides is glycosylated by a ppGalNAcT. The glycopeptides are then enriched using lectin affinity chromatography and analyzed by Edman sequencing. (c) and (d) Show phage display and mRNA display approaches for determination of preferred glycosylation sites/sequons. (e) Application of SAMDI-MS for identification of preferred sequons for GTs.

difficult to determine the identity and linkage of the leaving group at the reducing end (+1 subsite and beyond). At a low-throughput, different oligosaccharides can simply be assayed for activity. However, this depends upon the availability of diverse substrates with differing linkages and substituents; thus, introducing a challenge in terms of scope and scalability.

A useful method for identifying preferred substrates of retaining GHs is through the use of 2F-sugar GH inactivators (Fig. 8a).<sup>116,117</sup> In this approach, introduction of electronegative

fluorine at the C2 position of the substrate results in a great reduction in the rates of both steps of the reaction through destabilization of the oxocarbenium ion-like transition states *via* inductive effects.<sup>117</sup> When an activated leaving group is also incorporated to accelerate the first step, reaction of these inactivators with a GH results in accumulation of the covalent glycosyl-enzyme intermediate, thus inactivation of the enzyme. This intermediate is resistant to hydrolysis, but, remarkably, in the presence of a productively bound glycan acceptor, can be

reactivated *via* transglycosylation.<sup>116</sup> The identity of the preferred reducing end substituent can thus be identified by screening for (rates of) reactivation with libraries of different potential glycan acceptors in a method that is readily done in a plate-based format.<sup>116</sup> Moreover, the identity of the linkage can also be determined through subsequent analysis of the rescue product.<sup>116</sup> The initial study profiled the aglycone specificities of a number of GHs against a panel of glycosides and free sugars with the goal of using this information to guide GH-mediated glycoside synthesis.<sup>116</sup> The approach has also been applied to study the substrate scope of *E. coli* glucuronidase and to better understand which non-carbohydrate small molecule substrates it acts on.<sup>118</sup> Taking this even further, a synthetic gene library of GH1s was screened for their ability to cleave a library of glycosides modified individually with azide and amine substituents at the 3-, 4- and 6- positions.<sup>119</sup> The aglycone specificities of the top eight hits were then profiled at high-throughput using a total of 83 different potential acceptors, allowing the identification of optimal enzyme/substrate combinations for synthesis of specific glycosides using the glycosynthase technology.<sup>119</sup>

The substrate preferences of GTs that act on polypeptides are of interest, especially with respect to the production of glycoproteins. Of particular interest have been the polypeptide *N*-acetylgalactosaminyltransferases (ppGalNAcTs), *O*-linked GlcNAc transferase (OGT), OSTs, and *N*-glycosyltransferases (NGTs). In seminal studies on ppGalNAcTs, sequence specificities were assessed by incubation of the enzymes with UDP-GalNAc and randomized pools of peptides. Subsequent purification of the modified glycopeptides by lectin affinity chromatography followed by Edman sequencing enabled facile identification of preferred substrate sequences (Fig. 8b).<sup>120–126</sup> Results obtained have informed the software, IsoGlyP, which predicts ppGalNAcT glycosylation for a given sequence.<sup>127</sup> Correspondingly, IsoGlyP has found considerable use in the design of synthetic sequons to target ppGalNAcT activity.<sup>128,129</sup>

Phage and mRNA display offer new pathways for determining sequence preferences and engineering bacterial *N*-glycosylation.<sup>130,131</sup> In 2010, the Aebi group developed a method known as “GlycoPhage” (Fig. 8c).<sup>130</sup> In this, a bacterial *N*-glycoprotein (AcrA from *Campylobacter jejuni*) is genetically linked to a phage coat protein (pIII). The AcrA-pIII fusion is exported to the periplasm upon expression where it can be glycosylated by OST. It is then incorporated into the phage progeny to make glycophage. The glycophage can then be detected and/or pulled down by a number of different methods. In the proof of concept study, the authors were able to enrich for sequences that could be glycosylated by *C. jejuni* OST by varying the *N*-glycosylation sequons and panning for binding using a glycan-specific antibody.<sup>130</sup> This method should, in principle, be applicable to evolving any enzyme involved in glycan biosynthesis.<sup>130</sup> In 2022, the DeLisa group described an mRNA display screen for glycoprotein sequon engineering (Fig. 8d).<sup>131</sup> In this method, the protein of interest is fused to a short sequence which stalls the ribosome such that the nascent polypeptide and mRNA are still bound within the

ribosome.<sup>131</sup> The polypeptide can then be glycosylated through cell-free glycoprotein synthesis, the glycoprotein enriched by affinity purification, and the sequence of the RNA within the stalled ribosome determined by sequencing of the RT-PCR product.<sup>131</sup> While not described within the paper, this method should be applicable to engineering/determination of glycosylation sequons and other aspects of protein glycosylation and affords a much higher throughput than cell-based methods ( $>10^9$  clones per screen).<sup>131</sup>

A number of studies have applied self-assembled monolayers for matrix-assisted desorption/ionization mass spectrometry (SAMDI-MS) for determination of sequence specificities (Fig. 8e). The workflows for the campaigns outlined here are as follows: glycosylation reactions are carried out in microtitre plates, and the reaction mixtures are applied to a plate with a coating that immobilizes the substrate/products (*e.g.* reactive maleimide to couple to Cys-containing peptides or Ni-NTA for His-tagged protein binding).<sup>132–134</sup> Following this, the plates are washed and then analyzed by MALDI-TOF MS.<sup>132–134</sup> A series of studies by the Jewett and Mrksich groups have shown the utility of SAMDI for characterizing the specificities of OGT, ppGalNAcTs, and NGTs.<sup>132–134</sup> These experiments have enabled the identification of a number of “GlycTags” for modification using NGTs.<sup>133</sup> In fact, by profiling a number of different NGTs, and determining sequence preferences of these enzymes, semi-orthogonal GlycTags were identified. With this knowledge in hand, site-selective protein glycosylation was then carried out using these NGT-GlycTag pairs.<sup>133</sup> Such an approach is particularly useful since introduction of the Glc or GlcN handles by NGTs can allow for subsequent extension to produce a glycan of interest.<sup>28,133,135</sup> In this way, through cycles of handle attachment and glycan installation, proteins of defined glycosylation at different sites can be readily prepared.<sup>133</sup>

### Transcription factor biosensors for enzymatic activities

In principle, transcription factor-based biosensors offer a flexible method for monitoring the synthesis or degradation of different compounds.<sup>136</sup> Such approaches rely on co-opting the abilities of organisms to sense different small molecules. This is then often used to induce expression of a fluorescent protein, with subsequent sorting of active clones by FACS at ultrahigh-throughput.<sup>136</sup> In practice so far, most established screens for CAZymes actually detect the release of different artificial leaving groups.<sup>137,138</sup> The benefit of applying these methods over non-transcription factor-based screens, is that one can conceivably use less material compared to that needed for plate-based screens (including both substrates and consumables such as plates) while screening many more clones with the same substrate. For example, in a general method to screen for hydrolases, Choi *et al.* applied an engineered phenol-sensitive transcription factor to screen for release of nitrophenols.<sup>137</sup> Many available chromogenic glycoside substrates produce nitrophenols upon cleavage. And so, by using a GFP reporter under control of phenol-induced transcription, the authors were able to show that addition of pNP-cellobiose to the culture media enabled ready differentiation of cellulase-expressing



cells from non-expressers.<sup>137</sup> While the authors were able to apply this method for functional metagenomic screening for phosphatases, further work is required to show its applicability for GHs.<sup>137</sup>

### Catalyze or die – selections for better CAZymes

Owing to central roles of sugars in primary metabolism, the selection of clones on the basis of survival and/or improved growth when certain carbohydrates are used as the sole carbon source can be used to identify novel and improved enzyme variants.<sup>139–141</sup> Such selections are often used in conjunction with more quantitative methods in order to further distinguish improved clones.<sup>80,142,143</sup>

However, there have been a number of creative implementations of selections in the engineering of CAZymes beyond simple growth screens. As an example, the Cornish laboratory has shown the utility of chemical complementation for engineering of glycosynthases<sup>144</sup> and cellulases.<sup>145</sup> In brief, this method relies on the use of proteins that can recognize different chemical moieties. These are then fused to DNA-binding proteins such that gene expression is either activated or blocked when the small molecule of interest is present. While this approach has been used for glycosynthases and cellulases, and should be highly scalable, it has seen limited use since its first implementations.<sup>144,145</sup> Of recent note is also the use of a combined antibiotic selection and auxotroph complementation strategy by Bennet and colleagues for the evolution of a sialidase to specifically cleave deaminated neuraminic acid (Kdn).<sup>146</sup> In this, activity against Kdn was selected for in a tyrosine auxotroph line of *E. coli* by supplementation of the culture media with Kdn-caged tyrosine. Meanwhile, the native Neu5Acase activity of the sialidase was selected against by inclusion of Neu5Ac- $\alpha$ 2,6-Gal-chloramphenicol. In applying this they were able to identify variants with up to 20-fold enhancements in Kdnase activity and up to 60-fold change in specificity.<sup>146</sup>

### Into parts unknown

Enzyme discovery and engineering campaigns have offered not only improved enzymes, but also new understandings and insights into how known enzymes work and the evolutionary paths that have been undertaken in Nature. Progress has also come from computational approaches, especially in light of the success of programs such as AlphaFold in the sequence-based prediction of protein structures.<sup>147</sup> Design of enzymes has been a long sought-after goal that should allow the development of enzymes with precisely tuned reactivity.<sup>148</sup> Computational enzyme design, using programs for structure prediction such as RosETTA, especially when used in combination with directed evolution have scored a number of successes.<sup>148</sup> Recent advances have brought this goal closer to general use for CAZymes, as described below.

Artificial intelligence has yielded CAZymes that are not as yet found in Nature.<sup>149</sup> In a remarkable case, Madani *et al.* used a large language model – trained on sequence data from > 19 000 PFAM families with further tuning on lysozyme sequences from

CAZy families GH24, GH73, GH108, and others not yet classified within CAZyDB – to design a suite of lysozymes. These designed lysozymes were found to have similar activity profiles – both in the number of enzymes with activity (73% of designed enzymes) and the level of activity – to those of a set of random natural enzymes from the lysozyme families used for training. These screens used fluorescence-quenched fluorescein-labeled cell wall from *Micrococcus lysodeikticus* as a substrate. Further characterization showed that sequences with identity as low as 31% to any known enzyme were found to have activities and structural folds similar to those of known lysozymes.<sup>149</sup> While this does not yet offer the ability to explicitly encode/discover new activities, it does offer a means for exploration of sequences not found in Nature.

The inherent reactivities of metals have been utilized in a number of natural and engineered enzymatic activities.<sup>148,150,151</sup> For many hydrolytic enzymes, metals such as Zn<sup>2+</sup> act as Lewis acids and activate a water molecule for nucleophilic attack.<sup>152</sup> However, metals are not generally used for catalysis in this manner by GHs. In the closest instance, families GH127 and GH146 utilize a Zn<sup>2+</sup> ion to activate the thiol of a Cys residue that then acts as the nucleophile.<sup>153,154</sup> This leaves one to wonder whether there is a reason why Nature has not utilized “metalloglycosidases” more broadly. In recent work,  $\beta$ -glucosidase activity was introduced into OmpF (a porin) *via* introduction of a Zn<sup>2+</sup> binding site with an open coordination site.<sup>155</sup> Through rounds of directed evolution using a simple X-Glc and cellobiose-growth dependent agar plate assay, the authors were able to improve the activity of this enzyme against  $\beta$ -glucosides by two orders of magnitude.<sup>155</sup> Curiously, these enzymes show a strong but incomplete dependence upon Zn<sup>2+</sup> for hydrolysis with a competing non-metal dependent reaction.<sup>155</sup> While the best enzymes were still relatively slow ( $k_{\text{cat}}/K_{\text{M}}$  of 10 min<sup>-1</sup> M<sup>-1</sup>), it will be interesting to see how well metalloenzymes can be adapted to glycoside hydrolysis. Given the “late” transition states associated with glycosyl transfer *via* oxocarbenium ion-like transition states<sup>5</sup> it may be that there is little advantage to increasing the nucleophilicity of water in this way. Analogous work on phosphotriesterases has shown that promiscuous enzymes that operate by different mechanisms than those found in Nature, can be evolved to have the same catalytic efficiency as the natural enzymes.<sup>156</sup> Albeit in the case of phosphotriesterases, the natural enzymes are metal-dependent while the enzyme evolved in the laboratory does not use a metal for catalysis.<sup>156</sup>

### Recent advances in ultrahigh-throughput screening and beyond

Functional metagenomics combined with droplet microfluidics has proven to be a potent combination for enzyme discovery. If the given activity exists, identification of this activity *via* functional metagenomics is often a matter of screening a sufficient number of clones. With the appropriate source material, hit rates in fosmid screens for common activities such as cellulases are ~ 1 hit/384 fosmids (or ~ 15 000 genes),<sup>43</sup> but for more complex activities such as endo-O-glycan degradation, hit rates

can drop to  $\sim 1$  hit/5000 fosmids (or  $\sim 184\,000$  genes).<sup>157</sup> Thus, the ability to rapidly screen through the swathes of inactive clones is key. Droplet-based microfluidics offers a method to achieve the needed throughputs with minimal expenditure of material. Excellent work on this matter has been carried out by the Hollfelder laboratory and its collaborators.<sup>59,158,159</sup> For example, a single GH3 glucuronidase with distant relation to any characterized GH3 (37% sequence identity) was identified by screening a small insert library of  $\sim 10^6$  clones.<sup>158</sup> This was the first time that glucuronidase activity had been identified in the GH3 family despite its extensive study.<sup>158</sup> Indeed, such work highlights the ability of functional metagenomics to identify highly active catalysts which would not otherwise be explored.<sup>10,49,158,160</sup>

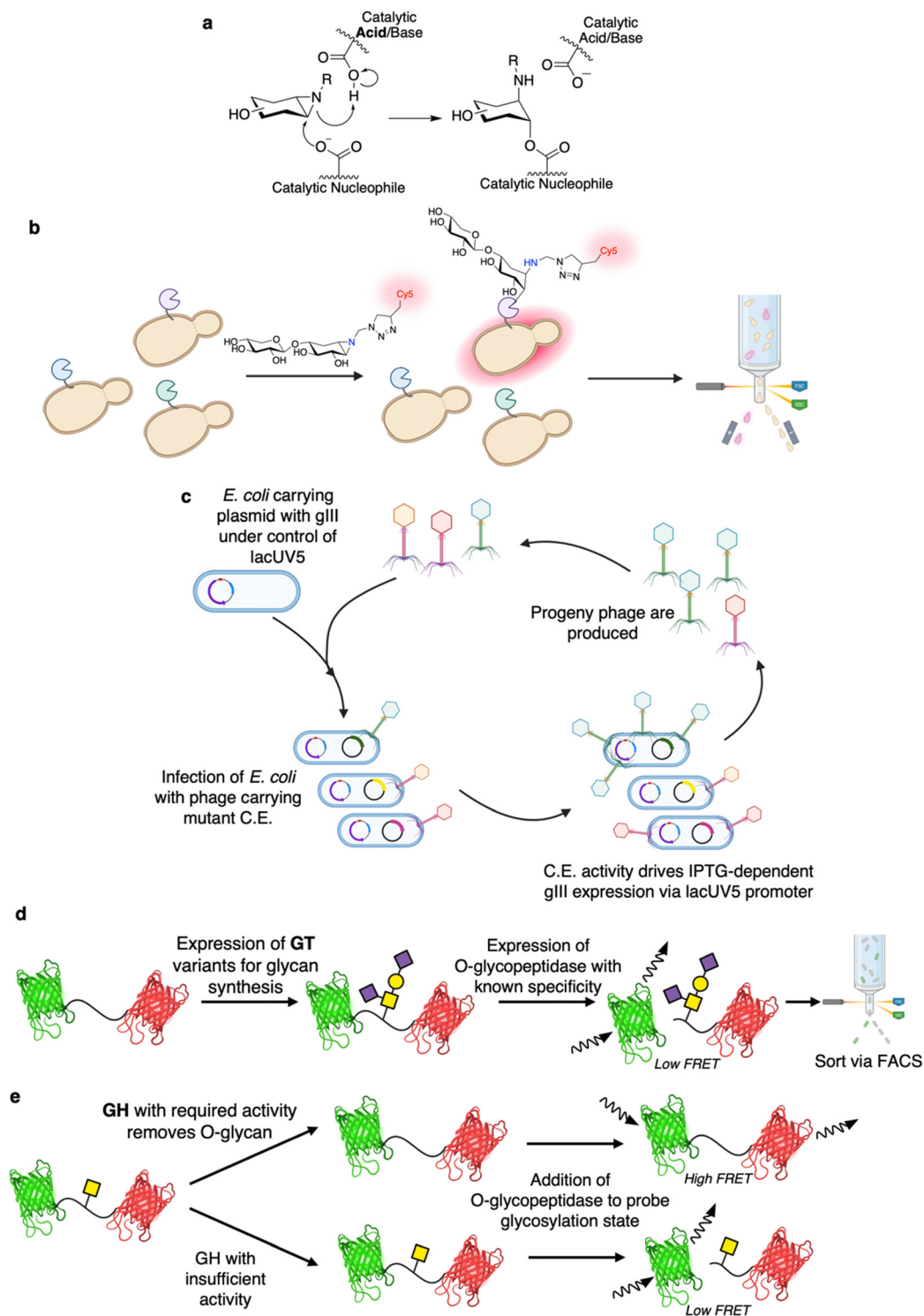
Directed evolution and deep characterization of GHs can also be carried out in droplets.<sup>161</sup> Romero and colleagues performed deep mutational scanning of a GH1 from *Streptomyces* sp. (Bgl3) in droplets and characterized millions of mutants in terms of activity and thermostability.<sup>161</sup> This was the first deep mutational scan of this class of enzyme. Curiously, it revealed residues essential for function which were distant from the active site and also non-conserved in other GH1 family members.<sup>161</sup> Such results provide clear indications that, even though highly conserved sites are indispensable for function, proteins acquire local adaptations and networks of residues required for enzyme function over the course of evolution.<sup>63</sup> The authors further show the utility of droplet microfluidics for characterizing variants by heat-treating the droplets and then screening for thermostable variants.<sup>161</sup>

In 2023, Lipsh-Sokolik *et al.* were able to show the utility of activity-based protein profiling for identification of highly active designed GH10 xylanases.<sup>162</sup> Activity based probes based upon epoxide and aziridine derivatives of glycosides have been developed extensively by the Overkleeft group.<sup>163</sup> These probes enable capture of retaining Koshland GHs *via* formation of an irreversibly linked cyclitol upon attack of the epoxide/aziridine by the enzyme's catalytic nucleophile (Fig. 9a).<sup>163</sup> In this screen, the probes carried a fluorophore and thus linkage of the probes to a yeast surface displayed enzyme allowed for separation of active variants *via* FACS (Fig. 9b).<sup>162</sup> Diverse xylanases were generated *in silico* *via* recombination of natural GH10 sequences with further re-design and optimization to eliminate incompatibilities due to epistasis. By applying this FACS-based approach, libraries of  $> 10^5$  variants could be readily screened, with  $10^3$ – $10^4$  active designed xylanases being identified in these screens. While the screen itself only requires the enzymes to carry out the first step in the retaining Koshland mechanism, most of the identified enzymes were capable of carrying out the full catalytic cycle. Moreover, by using different probes, the authors were able to further separate variants with activity on xylan, cellulose, or both. Further work using these activity-based probes for CAZyme engineering seems likely in addition to their previously established utility in identification of enzymes from complex mixtures,<sup>164</sup> and inhibitor discovery,<sup>165</sup> amongst a number of other applications.<sup>163</sup> While there may be concerns about the ability of the method to

identify highly active variants – as only a single, partial turnover can be achieved – a number of other successfully applied methodologies for enzyme engineering also only allow for a single turnover of the screening substrate.<sup>166,167</sup>

Phage assisted continuous evolution (PACE) has been a largely unexplored method for CAZyme engineering. One of the great benefits of continuous evolution strategies such as PACE is that they enable rapid, unsupervised, explorations of sequence space.<sup>168</sup> Indeed, depending upon the experimental setup, almost 200 rounds of evolution can be carried out in a single week whereas many directed evolution campaigns would only finish a single round in that time.<sup>169</sup> The basis on which PACE was developed is that the activity of interest must be linked to successful synthesis of the pIII coat protein (Fig. 9c).<sup>170</sup> In brief, *E. coli* are used as hosts for phage which lack the pIII gene (gIII) but carry the gene of interest.<sup>170</sup> These *E. coli* host cells carry gIII under the control of a genetic circuit that is activated by the activity of interest.<sup>170</sup> Replication of the phage is thus dependent upon the activity of interest.<sup>170</sup> The *E. coli* also carry a plasmid for increased rate of mutagenesis that enables continual diversification of the library.<sup>170</sup> And so, over time, phage encoded enzyme variants capable of driving pIII expression (and thus phage replication) are continually selected for and continually diversified.<sup>170</sup> PACE has been shown to be useful for evolution of for a number of enzymes including proteases, base editors, RNA polymerases, and aminoacyl-tRNA synthetases.<sup>170</sup> With respect to CAZymes, in the closest available example, PACE has been shown to theoretically enable screening for CEs capable of de-esterifying IPTG (Fig. 9c).<sup>171</sup> Note though that, while esterases with improved activity could be found by PACE, the authors actually had greater success with a non-continuous evolution approach (phage assisted continuous selection (PACS)). In PACS, mutants are mutagenized *in vitro* prior to introduction into phage rather than relying upon a mutagenesis-enhancing plasmid for continuous mutagenesis *in vivo*.<sup>171</sup> The study also identified a number of different esterified substrates with which one could readily apply PACE or PACS.<sup>171</sup> In principle, many more substrates could be employed as long as transcription factor-activator pairs with requisite specificities are known. And so, better understandings of the transcriptional activation in microbial carbohydrate degradation pathways (such as polysaccharide utilization loci) could offer further avenues for exploration.<sup>172</sup>

The Withers laboratory has developed the mucinase/O-glycopeptidase enabled linking of O-glycosylation and related activities (MELiORA) method for use in engineering of enzymes active on mucin-type O-glycoproteins (Fig. 9d and e).<sup>173</sup> With respect to CAZyme engineering, MELiORA uses O-glycopeptidases (a type of peptidase with absolute specificity for mucin-type O-glycosylated protein substrates<sup>174</sup>) to identify the glycosylation state of a fluorescent protein FRET probe. Using this, enzymes that add or remove glycans, such as GTs (Fig. 9d) and GHs (Fig. 9e), can be assayed with a read-out based upon the change in FRET arising from O-glycopeptidase-catalysed cleavage of the probe. Because all of the assay



**Fig. 9** Recent advances in ultrahigh-throughput screening for CAZymes. (a) Mechanism for inactivation and labeling of retaining Koshland GHs by aziridine bearing activity-based probes. (b) Use of fluorescent aziridine-bearing activity-based probes for screening of xylanases *via* yeast surface display and FACS. In this screen, active xylanase variants are fluorescently labeled as they are covalently inactivated by the aziridine substrate upon nucleophilic attack at the pseudo-anomeric centre. (c) Workflow for application of PACS in the directed evolution of CEs. Note that PACS differs from PACE only in that an additional mutagenesis plasmid is included in PACE compared to PACS. MELIORA can be applied for the engineering of GTs (panel (d)) and GHs (panel (e)). In brief, this method relies on linking of changes to the glycosylation state (through the activity of GHs or GTs) of a fluorescent protein FRET pair to proteolytic cleavage *via* the activity of O-glycopeptidases (peptidases that require certain O-glycan structures on the substrate for activity).

components can be expressed within the cell (*i.e.* the probe, the glycosyltransferases and other enzymes required for glycan synthesis,<sup>128,175</sup> the *O*-glycopeptidase, *etc.*), enzyme variants can also be readily screened at ultrahigh-throughput *via* FACS. Even for plate-based assays, the approach still enables screening using complex mucin-type *O*-glycoprotein substrates with minimal costs; as the glycoprotein substrates – with diverse, defined glycan structures – can be readily produced in *E. coli* with high yields.<sup>128,173,175</sup> In many ways MELiORA is ideal as the protein substrate is likely similar, at least locally, to that on which one would want the enzymes to ultimately act. When used in screens for glycan biosynthetic enzymes, MELiORA also offers the same benefits as in the coupled enzyme screen devised by Mayer and co-workers.<sup>88</sup> That is, with the use of the appropriate *O*-glycopeptidase, it is only when the glycan of interest is produced that there is any change in fluorescence. Moreover, the method is not limited to a FRET probe as initially described. Rather, almost any screening system for peptidase activities should be readily amenable to MELiORA, thus these screens can be converted such that they enable screening for CAZymes.<sup>176</sup> While MELiORA was only applied to the directed evolution of an *O*-glycopeptidase in the initial study, the broader applicability of the approach should be borne out by further work in the field.<sup>173</sup>

## Concluding remarks and the future of the field

Nature has evolved CAZymes to carry out diverse reactions with a high degree of specificity. In light of this, it is perhaps then even more remarkable that these enzymes can be so readily engineered to better suit human purposes. The implementation of high-throughput screens is a vital step in the engineering of these enzymes. However, as highlighted in this review, there are clear benefits and drawbacks to individual screens with respect to their scalability and applicability. The scalability of many methods is likely to improve over time as miniaturization using techniques such as droplet microfluidics becomes more widespread.<sup>57</sup> What is a remaining hurdle then is the fact that substantial discrepancies in screened activity as compared to desired activity have been observed in a number of CAZyme engineering and discovery campaigns.<sup>87,99,157,177</sup> As such, a few approaches stand out for their ability to use substrates with structures as close as possible to the natural/ultimate desired substrate, and be carried out in a manner similar to that ultimately required.

A great benefit of using natural substrates in screening is that the observed activity improvements should be readily translatable to the desired task and conditions. However, many of these screens suffer from the need for processing steps (*e.g.* addition of developing reagents, additional incubation steps, or elevated incubation temperatures to drive chemical reactions) that limit throughput and add difficulty. The creativity and ingenuity displayed within the field, particularly in the use of coupled assays and highly relevant substrates (or ideally the

desired substrate) to detect activity stand as highlights and portend future developments. In moving this forward there is likely to be synergy between the engineering of CAZymes and the engineering of the coupling enzymes used (whether they be oxidases,<sup>79,81</sup> dehydrogenases,<sup>78,86</sup> *O*-glycopeptidases<sup>173</sup> or whatever).

As is evident from their absence from this review, but widespread use within the field, there are a number of enzymes for which little high-throughput engineering has been carried out. Prominent examples of this are the ENGases – incredibly powerful enzymes for remodeling of *N*-glycans to produce designer glycoproteins.<sup>178</sup> The workflow for such glycoengineering often employs both a hydrolytic enzyme (to remove the native *N*-glycans) and then glycosynthase mutants to install the desired glycan structure. Serious engineering work could generate new enzymes of improved specificity, perhaps allowing simple site-selective glycosylations to be performed. In other enzyme classes, limited work has been performed on engineering enzymes such as PLs and lytic polysaccharide monoxygenases (LPMOs) (which are classified in the CAZY database in a number of auxiliary activity families<sup>179</sup> and have attracted attention due to their ability to initiate degradation of otherwise recalcitrant crystalline cellulose and chitin<sup>6,179</sup>). Indeed, there are only two reported LPMO directed evolution campaigns.<sup>180,181</sup> In a rather impressive study, Jensen *et al.* employed high-throughput mass spectrometry-based screening to almost completely shift an LMPO's substrate specificity from cellulose to chitin.<sup>180</sup> In light of these examples, it is clear that further work is needed within the field to expand the available assays for these enzymes and thereby enable improvement of what are already highly useful and in-demand enzymes.

## Conflicts of interest

There are no conflicts to declare.

## Acknowledgements

J. F. W. was supported by a four-year doctoral fellowship from UBC during the writing of this review. We would like to further thank the Canadian Glycomics Network (GlycoNet), the Natural Sciences and Engineering Research Council of Canada and the Canadian Institutes of Health Research for additional financial support. The table of contents graphic and Fig. 5–9 were created in part or in whole with Biorender.com.

## References

- 1 B. A. Stankiewicz, D. E. G. Briggs, R. P. Evershed, M. B. Flannery and M. Wuttke, *Science*, 1997, **276**, 1541–1543.
- 2 S. L. Richter, A. H. Johnson, M. M. Dranoff, B. A. LePage and C. J. Williams, *Geochim. Cosmochim. Acta*, 2008, **72**, 2744–2753.
- 3 R. A. Laine, *Glycobiology*, 1994, **4**, 759–767.



- 4 M. Critcher, A. A. Hassan and M. L. Huang, *Trends Biochem. Sci.*, 2022, **47**, 492–505.
- 5 D. L. Zechel and S. G. Withers, *Acc. Chem. Res.*, 2000, **33**, 11–18.
- 6 G. R. Hemsworth, G. Déjean, G. J. Davies and H. Brumer, *Biochem. Soc. Trans.*, 2016, **44**, 94–108.
- 7 S. Chakraborty, A. Rani, A. Dhillon and A. Goyal, in *Current Developments in Biotechnology and Bioengineering*, eds. A. Pandey, S. Negi and C. R. Soccol, Elsevier, 2017, pp. 527–539.
- 8 Y. Tan, Y. Zhang, Y. Han, H. Liu, H. Chen, F. Ma, S. G. Withers, Y. Feng and G. Yang, *Sci. Adv.*, 2019, **5**, eaaw8451.
- 9 T. Verhaeghe, K. De Winter, M. Berland, R. De Vreese, M. D'Hooghe, B. Offmann and T. Desmet, *Chem. Commun.*, 2016, **52**, 3687–3689.
- 10 P. Rahfeld, L. Sim, H. Moon, I. Constantinescu, C. Morgan-Lang, S. J. Hallam, J. N. Kizhakkedathu and S. G. Withers, *Nat. Microbiol.*, 2019, **4**, 1475–1485.
- 11 D. H. Kwan, I. Constantinescu, R. Chapanian, M. A. Higgins, M. P. Kötzler, E. Samain, A. B. Boraston, J. N. Kizhakkedathu and S. G. Withers, *J. Am. Chem. Soc.*, 2015, **137**, 5695–5705.
- 12 Q. P. Y. P. Liu, G. Sulzenbacher, H. P. Yuan, E. P. Bennett, G. Pietz, K. Saunders, J. Spence, E. Nudelman, S. B. Levery, T. White, J. M. Neveu, W. S. Lane, Y. Bourne, M. L. Olsson, B. Henrissat and H. Clausen, *Nat. Biotechnol.*, 2007, **25**, 454–464.
- 13 A. Wang, R. V. P. Ribeiro, A. Ali, E. Brambate, E. Abdelnour-Berchtold, V. Michaelsen, Y. Zhang, P. Rahfeld, H. Moon, H. Gokhale, A. Gazzalle, P. Pal, M. Liu, T. K. Waddell, C. Cserti-Gazdewich, K. Tinckam, J. N. Kizhakkedathu, L. West, S. Keshavjee, S. G. Withers and M. Cypel, *Sci. Transl. Med.*, 2022, **14**, eabm7190.
- 14 T. Lindhout, U. Iqbal, L. M. Willis, A. N. Reid, J. Li, X. Liu, M. Moreno and W. W. Wakarchuk, *Proc. Natl. Acad. Sci. U. S. A.*, 2011, **108**, 7397–7402.
- 15 A. Geissner, L. Baumann, T. J. Morley, A. K. O. Wong, L. Sim, J. R. Rich, P. P. L. So, E. M. Dullaghan, E. Lessard, U. Iqbal, M. Moreno, W. W. Wakarchuk and S. G. Withers, *ACS Cent. Sci.*, 2021, **7**, 345–354.
- 16 T. B. Parsons, W. B. Struwe, J. Gault, K. Yamamoto, T. A. Taylor, R. Raj, K. Wals, S. Mohammed, C. V. Robinson, J. L. P. Benesch and B. G. Davis, *Angew. Chem., Int. Ed.*, 2016, **55**, 2361–2367.
- 17 C. Li, G. Chong, G. Zong, D. A. Knorr, S. Bournazos, A. H. Aytenfisu, G. K. Henry, J. V. Ravetch, A. D. MacKerell and L.-X. Wang, *J. Am. Chem. Soc.*, 2021, **143**, 7828–7838.
- 18 J. F. Wardman, R. K. Bains, P. Rahfeld and S. G. Withers, *Nat. Rev. Microbiol.*, 2022, **20**, 542–556.
- 19 M. Critcher, T. O'Leary and M. L. Huang, *Biochem. J.*, 2021, **478**, 703–719.
- 20 M. Taupp, K. Mewis and S. J. Hallam, *Curr. Opin. Biotechnol.*, 2011, **22**, 465–472.
- 21 F. H. Arnold, *Angew. Chem., Int. Ed.*, 2019, **58**, 14420–14426.
- 22 E. Drula, M.-L. Garron, S. Dogan, V. Lombard, B. Henrissat and N. Terrapon, *Nucleic Acids Res.*, 2022, **50**, D571–D577.
- 23 A. Lévassieur, E. Drula, V. Lombard, P. M. Coutinho and B. Henrissat, *Biotechnol. Biofuels*, 2013, **6**, 41.
- 24 A. B. Boraston, D. N. Bolam, H. J. Gilbert and G. J. Davies, *Biochem. J.*, 2004, **382**, 769–781.
- 25 S. A. K. Jongkees and S. G. Withers, *Acc. Chem. Res.*, 2014, **47**, 226–235.
- 26 L. L. Lairson, B. Henrissat, G. J. Davies and S. G. Withers, *Annu. Rev. Biochem.*, 2008, **77**, 521–555.
- 27 B. Bissaro, P. Monsan, R. Fauré and M. J. O'Donohue, *Biochem. J.*, 2015, **467**, 17–35.
- 28 P. M. Danby and S. G. Withers, *ACS Chem. Biol.*, 2016, **11**, 1784–1794.
- 29 H. Nakai, M. Kitaoka, B. Svensson and K. Ohtsubo, *Curr. Opin. Chem. Biol.*, 2013, **17**, 301–309.
- 30 E. C. O'Neill and R. A. Field, *Carbohydr. Res.*, 2015, **403**, 23–37.
- 31 L. F. Mackenzie, Q. Wang, R. A. J. Warren and S. G. Withers, *J. Am. Chem. Soc.*, 1998, **120**, 5583–5584.
- 32 M. Jahn, J. Marles, R. A. J. Warren and S. G. Withers, *Angew. Chem., Int. Ed.*, 2003, **42**, 352–354.
- 33 M. Noguchi, T. Tanaka, H. Gyakushi, A. Kobayashi and S. I. Shoda, *J. Org. Chem.*, 2009, **74**, 2210–2212.
- 34 J. Müllegger, M. Jahn, H. M. Chen, R. A. J. Warren and S. G. Withers, *Protein Eng., Des. Sel.*, 2005, **18**, 33–40.
- 35 Z. Armstrong, S. Reitingger, T. Kantner and S. G. Withers, *ChemBioChem*, 2010, **11**, 533–538.
- 36 Y. W. Kim, A. L. Lovering, H. Chen, T. Kantner, L. P. McIntosh, N. C. J. Strynadka and S. G. Withers, *J. Am. Chem. Soc.*, 2006, **128**, 2202–2203.
- 37 M. Nieto-Domínguez, B. Fernández de Toro, L. I. de Eugenio, A. G. Santana, L. Bejarano-Muñoz, Z. Armstrong, J. A. Méndez-Liter, J. L. Asensio, A. Prieto, S. G. Withers, F. J. Cañada and M. J. Martínez, *Nat. Commun.*, 2020, **11**, 4864.
- 38 Y. W. Kim, R. Zhang, H. Chen and S. G. Withers, *Chem. Commun.*, 2010, **46**, 8725–8727.
- 39 C. Li, H. J. Ahn, J. H. Kim and Y. W. Kim, *Carbohydr. Polym.*, 2014, **99**, 39–46.
- 40 M. Jahn, H. Chen, J. Müllegger, J. Marles, R. A. J. Warren and S. G. Withers, *Chem. Commun.*, 2004, 274–275.
- 41 H. M. Chen, Z. Armstrong, S. J. Hallam and S. G. Withers, *Carbohydr. Res.*, 2016, **421**, 33–39.
- 42 Z. Armstrong, K. Mewis, F. Liu, C. Morgan-Lang, M. Scofield, E. Durno, H. M. Chen, K. Mehr, S. G. Withers and S. J. Hallam, *ISME J.*, 2018, **12**, 2757–2769.
- 43 K. Mewis, Z. Armstrong, Y. C. Song, S. A. Baldwin, S. G. Withers and S. J. Hallam, *J. Biotechnol.*, 2013, **167**, 462–471.
- 44 S. S. Macdonald, A. Patel, V. L. C. Larmour, C. Morgan-Lang, S. J. Hallam, B. L. Mark and S. G. Withers, *J. Biol. Chem.*, 2018, **293**, 3451–3467.
- 45 D. K. Hansen, J. R. Winther and M. Willemoës, *Carbohydr. Res.*, 2019, **480**, 54–60.



- 46 D. K. Hansen, A. L. Hansen, J. M. Koivisto, B. Shuoker, M. Abou Hachem, J. R. Winther and M. Willemoës, *Arch. Biochem. Biophys.*, 2022, **725**, 109280.
- 47 I. P. Wood, A. Elliston, P. Ryden, I. Bancroft, I. N. Roberts and K. W. Waldron, *Biomass Bioenergy*, 2012, **44**, 117–121.
- 48 J. Franceus, S. Dhaene, H. Decadt, J. Vandepitte, J. Caroen, J. Van Der Eycken, K. Beerens and T. Desmet, *Chem. Commun.*, 2019, **55**, 4531–4533.
- 49 L. Chuzel, M. B. Ganatra, E. Rapp, B. Henrissat and C. H. Taron, *J. Biol. Chem.*, 2018, **293**, 18138–18150.
- 50 P. Gacesa and F. S. Wusteman, *Appl. Environ. Microbiol.*, 1990, **56**, 2265–2267.
- 51 F. Meddeb-Mouelhi, J. K. Moisan and M. Beauregard, *Enzyme Microb. Technol.*, 2014, **66**, 16–19.
- 52 G. Bastien, G. Arnal, S. Bozonnet, S. Laguerre, F. Ferreira, R. Fauré, B. Henrissat, F. Lefèvre, P. Robe, O. Bouchez, C. Noirot, C. Dumon and M. O'Donohue, *Biotechnol. Biofuels*, 2013, **6**, 78.
- 53 L. Tasse, J. Bercovici, S. Pizzut-Serin, P. Robe, J. Tap, C. Klopp, B. L. Cantarel, P. M. Coutinho, B. Henrissat, M. Leclerc, J. Doré, P. Monsan, M. Remaud-Simeon and G. Potocki-Veronese, *Genome Res.*, 2010, **20**, 1605–1612.
- 54 A. I. Solbak, T. H. Richardson, R. T. McCann, K. A. Kline, F. Bartnek, G. Tomlinson, X. Tan, L. Parra-Gessert, G. J. Frey, M. Podar, P. Luginbühl, K. A. Gray, E. J. Mathur, D. E. Robertson, M. J. Burk, G. P. Hazlewood, J. M. Short and J. Kerovuo, *J. Biol. Chem.*, 2005, **280**, 9431–9438.
- 55 F. M. T. Koné, M. Le Béhec, J. P. Sine, M. Dion and C. Tellier, *Protein Eng., Des. Sel.*, 2009, **22**, 37–44.
- 56 G. Yang and S. G. Withers, *ChemBioChem*, 2009, **10**, 2704–2715.
- 57 M. Gantz, S. Neun, E. J. Medcalf, L. D. van Vliet and F. Hollfelder, *Chem. Rev.*, 2023, **123**, 5571–5611.
- 58 A. Autour and M. Ryckelynck, *Micromachines*, 2017, **8**, 128.
- 59 A. S. Tauzin, M. R. Pereira, L. D. Van Vliet, P.-Y. Colin, E. Laville, J. Esque, S. Laguerre, B. Henrissat, N. Terrapon, V. Lombard, M. Leclerc, J. Doré, F. Hollfelder and G. Potocki-Veronese, *Microbiome*, 2020, **8**, 141.
- 60 J. M. Holstein, C. Gylstorff and F. Hollfelder, *ACS Synth. Biol.*, 2021, **10**, 252–257.
- 61 H. M. Chen, S. A. Nasser, P. Rahfeld, J. F. Wardman, M. Kohsiek and S. G. Withers, *Org. Biomol. Chem.*, 2021, **19**, 789–793.
- 62 G. Woronoff, A. El Harrak, E. Mayot, O. Schicke, O. J. Miller, P. Soumillion, A. D. Griffiths and M. Ryckelynck, *Anal. Chem.*, 2011, **83**, 2852–2857.
- 63 C. J. Markin, D. A. Mokhtari, F. Sunden, M. J. Appel, E. Akiva, S. A. Longwell, C. Sabatti, D. Herschlag and P. M. Fordyce, *Science*, 2021, **373**, eabf8761.
- 64 E. J. Medcalf, M. Gantz, T. S. Kaminski and F. Hollfelder, *Anal. Chem.*, 2023, **95**, 4597–4604.
- 65 F. Gielen, R. Hours, S. Emond, M. Fischlechner, U. Schell and F. Hollfelder, *Proc. Natl. Acad. Sci. U. S. A.*, 2016, **113**, E7383–E7389.
- 66 A. Zinchenko, S. R. A. Devenish, B. Kintsjes, P. Y. Colin, M. Fischlechner and F. Hollfelder, *Anal. Chem.*, 2014, **86**, 2526–2533.
- 67 S. A. Nasser, L. Betschart, D. Opaleva, P. Rahfeld and S. G. Withers, *Angew. Chem., Int. Ed.*, 2018, **130**, 11529–11534.
- 68 X. Chen and B. Li, *Curr. Opin. Chem. Biol.*, 2023, **76**, 102377.
- 69 S. A. Nasser, A. C. Lazarski, I. L. Lemmer, C. Y. Zhang, E. Brencher, H.-M. Chen, L. Sim, L. Betschart, L. J. Worrall, N. C. J. Strynadka and S. G. Withers, *bioRxiv*, 2024, preprint, DOI: [10.1101/2024.03.25.586180](https://doi.org/10.1101/2024.03.25.586180).
- 70 J. Franceus, J. Lormans, L. Cools, M. D'Hooghe and T. Desmet, *ACS Catal.*, 2021, **11**, 6225–6233.
- 71 S. S. Macdonald, Z. Armstrong, C. Morgan-Lang, M. Osowiecka, K. Robinson, S. J. Hallam and S. G. Withers, *Cell Chem. Biol.*, 2019, **26**, 1001–1012.
- 72 M. R. M. De Groeve, G. H. Tran, A. Van Hoorebeke, J. Stout, T. Desmet, S. N. Savvides and W. Soetaert, *Anal. Biochem.*, 2010, **401**, 162–167.
- 73 S. S. MacDonald, J. H. Pereira, F. Liu, G. Tegl, A. Degiovanni, J. F. Wardman, S. Deutsch, Y. Yoshikuni, P. D. Adams and S. G. Withers, *ACS Cent. Sci.*, 2022, **8**, 430–440.
- 74 L. C. MacDonald and B. W. Berger, *J. Biol. Chem.*, 2014, **289**, 312–325.
- 75 C. S. Rye and S. G. Withers, *J. Am. Chem. Soc.*, 2002, **124**, 9756–9767.
- 76 C. S. Rye, A. Matte, M. Cygler and S. G. Withers, *ChemBioChem*, 2006, **7**, 631–637.
- 77 D. F. Day and W. E. Workman, *Anal. Biochem.*, 1982, **126**, 205–207.
- 78 S. Ladeveze, P. J. Zurek, T. S. Kaminski, S. Emond and F. Hollfelder, *ACS Catal.*, 2023, **13**, 10232–10243.
- 79 C. Pitzler, G. Wirtz, L. Vojcic, S. Hiltl, A. Böker, R. Martinez and U. Schwaneberg, *Chem. Biol.*, 2014, **21**, 1733–1742.
- 80 M. R. M. De Groeve, M. De Baere, L. Hoflack, T. Desmet, E. J. Vandamme and W. Soetaert, *Protein Eng., Des. Sel.*, 2009, **22**, 393–399.
- 81 N. Lülsdorf, C. Pitzler, M. Biggel, R. Martinez, L. Vojcic and U. Schwaneberg, *Chem. Commun.*, 2015, **51**, 8679–8682.
- 82 A. P. Matthey, W. R. Birmingham, P. Both, N. Kress, K. Huang, J. M. Van Munster, G. S. Bulmer, F. Parmeggiani, J. Voglmeir, J. E. R. Martinez, N. J. Turner and S. L. Flitsch, *ACS Catal.*, 2019, **9**, 8208–8212.
- 83 J. B. Rannes, A. Ioannou, S. C. Willies, G. Grogan, C. Behrens, S. L. Flitsch and N. J. Turner, *J. Am. Chem. Soc.*, 2011, **133**, 8436–8439.
- 84 L. Sun, T. Bulter, M. Alcalde, I. P. Petrounia and F. H. Arnold, *ChemBioChem*, 2002, **3**, 781–783.
- 85 A. Debon, M. Pott, R. Obexer, A. P. Green, L. Friedrich, A. D. Griffiths and D. Hilvert, *Nat. Catal.*, 2019, **2**, 740–747.
- 86 M. Penner, O. J. Klein, M. Gantz, S. Boss, P. Barker, P. Dupree and F. Hollfelder, *bioRxiv*, 2023, preprint, DOI: [10.1101/2023.11.22.568356](https://doi.org/10.1101/2023.11.22.568356).
- 87 V. N. Perna, K. Barrett, A. S. Meyer and B. Zeuner, *Glycobiology*, 2023, **33**, 396–410.

- 88 C. Mayer, D. L. Jakeman, M. Mah, G. Karjala, L. Gal, R. A. J. Warren and S. G. Withers, *Chem. Biol.*, 2001, **8**, 437–443.
- 89 Y. W. Kim, S. S. Lee, R. A. J. Warren and S. G. Withers, *J. Biol. Chem.*, 2004, **279**, 42787–42793.
- 90 M. N. Namchuk and S. G. Withers, *Biochemistry*, 1995, **34**, 16194.
- 91 J. B. Kempton and S. G. Withers, *Biochemistry*, 1992, **31**, 9961–9969.
- 92 L. L. Lairson, W. W. Wakarchuk and S. G. Withers, *Chem. Commun.*, 2007, 365–367.
- 93 G. J. Williams and J. S. Thorson, *Nat. Protoc.*, 2008, **3**, 357–362.
- 94 G. J. Williams, C. Zhang and J. S. Thorson, *Nat. Chem. Biol.*, 2007, **3**, 657–662.
- 95 J. K. Roy, H.-W. Ahn, J. Lee, J.-H. Kim, S.-H. Yoo and Y.-W. Kim, *Food Chem.*, 2024, **437**, 137898.
- 96 S. M. Forget, S. B. Shepard, E. Soleimani and D. L. Jakeman, *J. Org. Chem.*, 2019, **84**, 11482–11492.
- 97 R. W. Gantt, P. Peltier-Pain, W. J. Cournoyer and J. S. Thorson, *Nat. Chem. Biol.*, 2011, **7**, 685–691.
- 98 R. W. Gantt, P. Peltier-Pain, S. Singh, M. Zhou and J. S. Thorson, *Proc. Natl. Acad. Sci. U. S. A.*, 2013, **110**, 7648–7653.
- 99 A. Aharoni, K. Thieme, C. P. C. Chiu, S. Buchini, L. L. Lairson, H. Chen, N. C. J. Strynadka, W. W. Wakarchuk and S. G. Withers, *Nat. Methods*, 2006, **3**, 609–614.
- 100 G. Yang, J. R. Rich, M. Gilbert, W. W. Wakarchuk, Y. Feng and S. G. Withers, *J. Am. Chem. Soc.*, 2010, **132**, 10570–10577.
- 101 C. Bachert and A. D. Linstedt, *Traffic*, 2013, **14**, 47–56.
- 102 L. Song, C. Bachert, K. T. Schjoldager, H. Clausen and A. D. Linstedt, *J. Biol. Chem.*, 2014, **289**, 30556–30566.
- 103 S. J. Hendel and M. D. Shoulders, *Nat. Methods*, 2021, **18**, 346–357.
- 104 B. Janesch, L. Baumann, A. Mark, N. Thompson, S. Rahmani, L. Sim, S. G. Withers and W. W. Wakarchuk, *Glycobiology*, 2019, **29**, 588–598.
- 105 C. J. Glasscock, L. E. Yates, T. Jaroentomeechai, J. D. Wilson, J. H. Merritt, J. B. Lucks and M. P. DeLisa, *Metab. Eng.*, 2018, **47**, 488–495.
- 106 A. Natarajan, T. Jaroentomeechai, M. Cabrera-Sánchez, J. C. Mohammed, E. C. Cox, O. Young, A. Shajahan, M. Vilkhovoy, S. Vadhin, J. D. Varner, P. Azadi and M. P. DeLisa, *Nat. Chem. Biol.*, 2020, **16**, 1062–1070.
- 107 A. A. Ollis, S. Zhang, A. C. Fisher and M. P. DeLisa, *Nat. Chem. Biol.*, 2014, **10**, 816–822.
- 108 J. D. Valderrama-Rincon, A. C. Fisher, J. H. Merritt, Y. Y. Fan, C. A. Reading, K. Chhiba, C. Heiss, P. Azadi, M. Aebi and M. P. DeLisa, *Nat. Chem. Biol.*, 2012, **8**, 434–436.
- 109 W. Kightlinger, K. F. Warfel, M. P. DeLisa and M. C. Jewett, *ACS Synth. Biol.*, 2020, **9**, 1534–1562.
- 110 M. Li, X. Zheng, S. Shanker, T. Jaroentomeechai, T. D. Moeller, S. W. Hulbert, I. Koçer, J. Byrne, E. C. Cox, Q. Fu, S. Zhang, J. W. Labonte, J. J. Gray and M. P. DeLisa, *Proc. Natl. Acad. Sci. U. S. A.*, 2021, **118**, e2107440118.
- 111 T. G. Keys, H. L. S. Fuchs, J. Ehrlich, J. Alves, F. Freiberger and R. Gerardy-Schahn, *Nat. Chem. Biol.*, 2014, **10**, 437–442.
- 112 R. D. Gupta and D. S. Tawfik, *Nat. Methods*, 2008, **5**, 939–942.
- 113 S. Bershtein, K. Goldin and D. S. Tawfik, *J. Mol. Biol.*, 2008, **379**, 1029–1044.
- 114 T. G. Keys, M. Berger and R. Gerardy-Schahn, *Anal. Biochem.*, 2012, **427**, 60–68.
- 115 S. M. Hancock, J. R. Rich, M. E. C. Caines, N. C. J. Strynadka and S. G. Withers, *Nat. Chem. Biol.*, 2009, **5**, 508–514.
- 116 J. E. Blanchard and S. G. Withers, *Chem. Biol.*, 2001, **8**, 627–633.
- 117 S. G. Withers, K. Rupitz and I. P. Street, *J. Biol. Chem.*, 1988, **263**, 7929–7932.
- 118 S. M. Wilkinson, C. W. Liew, J. P. Mackay, H. M. Salleh, S. G. Withers and M. D. McLeod, *Org. Lett.*, 2008, **10**, 1585–1588.
- 119 Z. Armstrong, F. Liu, H.-M. Chen, S. J. Hallam and S. G. Withers, *ACS Catal.*, 2019, **9**, 3219–3227.
- 120 C. L. Perrine, A. Ganguli, P. Wu, C. R. Bertozzi, T. A. Fritz, J. Raman, L. A. Tabak and T. A. Gerken, *J. Biol. Chem.*, 2009, **284**, 20387–20397.
- 121 J. Raman, T. A. Fritz, T. A. Gerken, O. Jamison, D. Live, M. Liu and L. A. Tabak, *J. Biol. Chem.*, 2008, **283**, 22942–22951.
- 122 M. De Las Rivas, E. J. Paul Daniel, H. Coelho, E. Lira-Navarrete, L. Raich, I. Compañón, A. Diniz, L. Lagartera, J. Jiménez-Barbero, H. Clausen, C. Rovira, F. Marcelo, F. Corzana, T. A. Gerken and R. Hurtado-Guerrero, *ACS Cent. Sci.*, 2018, **4**, 1274–1290.
- 123 M. F. Festari, F. Trajtenberg, N. Berois, S. Pantano, L. Revoredo, Y. Kong, P. Solari-Saquieres, Y. Narimatsu, T. Freire, S. Bay, C. Robello, J. Bénard, T. A. Gerken, H. Clausen and E. Osinaga, *Glycobiology*, 2017, **27**, 140–153.
- 124 T. A. Gerken, K. G. Ten Hagen and O. Jamison, *Glycobiology*, 2008, **18**, 861–870.
- 125 T. A. Gerken, O. Jamison, C. L. Perrine, J. C. Collette, H. Moinova, L. Ravi, S. D. Markowitz, W. Shen, H. Patel and L. A. Tabak, *J. Biol. Chem.*, 2011, **286**, 14493–14507.
- 126 E. J. P. Daniel, M. Las Rivas, E. Lira-Navarrete, A. García-García, R. Hurtado-Guerrero, H. Clausen and T. A. Gerken, *Glycobiology*, 2020, **30**, 910–922.
- 127 J. E. Mohl, T. A. Gerken and M. Y. Leung, *Glycobiology*, 2021, **31**, 168–172.
- 128 T. Du, N. Buenbrazo, L. Kell, S. Rahmani, L. Sim, S. G. Withers, S. DeFrees and W. W. Wakarchuk, *Cell Chem. Biol.*, 2019, **26**, 203–212.
- 129 N. K. Thompson, L. T. N. Leclair, S. R. Perez and W. W. Wakarchuk, *Biochem. J.*, 2021, **478**, 3527–3537.
- 130 C. Durr, H. Nothhaft, C. Lizak, R. Glockshuber and M. Aebi, *Glycobiology*, 2010, **20**, 1366–1372.
- 131 S. S. Chung, E. J. Bidstrup, J. M. Hershewe, K. F. Warfel, M. C. Jewett and M. P. DeLisa, *ACS Synth. Biol.*, 2022, **11**, 3892–3899.

- 132 W. Kightlinger, L. Lin, M. Rosztoczy, W. Li, M. P. Delisa, M. Mrksich and M. C. Jewett, *Nat. Chem. Biol.*, 2018, **14**, 627–635.
- 133 L. Lin, W. Kightlinger, S. K. Prabhu, A. J. Hockenberry, C. Li, L. X. Wang, M. C. Jewett and M. Mrksich, *ACS Cent. Sci.*, 2020, **6**, 144–154.
- 134 J.-M. Techner, W. Kightlinger, L. Lin, J. Hershewe, A. Ramesh, M. P. DeLisa, M. C. Jewett and M. Mrksich, *Anal. Chem.*, 2020, **92**, 1963–1971.
- 135 W. Kightlinger, K. E. Duncker, A. Ramesh, A. H. Thames, A. Natarajan, J. C. Stark, A. Yang, L. Lin, M. Mrksich, M. P. DeLisa and M. C. Jewett, *Nat. Commun.*, 2019, **10**, 5404.
- 136 J. Zhang, M. K. Jensen and J. D. Keasling, *Curr. Opin. Chem. Biol.*, 2015, **28**, 1–8.
- 137 S. L. Choi, E. Rha, S. J. Lee, H. Kim, K. Kwon, Y. S. Jeong, Y. H. Rhee, J. J. Song, H. S. Kim and S. G. Lee, *ACS Synth. Biol.*, 2014, **3**, 163–171.
- 138 C. K. Bandi, K. S. Skalenko, A. Agrawal, N. Sivaneri, M. Thiry and S. P. S. Chundawat, *ACS Synth. Biol.*, 2021, **10**, 682–689.
- 139 D. A. Cecchini, E. Laville, S. Laguerre, P. Robe, M. Leclerc, J. Doré, B. Henrissat, M. Remaud-Siméon, P. Monsan and G. Potocki-Véronèse, *PLoS One*, 2013, **8**, e72766.
- 140 S. M. Lee, T. Jellison and H. S. Alper, *Appl. Environ. Microbiol.*, 2012, **78**, 5708–5716.
- 141 Y.-S. Kim, H.-C. Jung and J.-G. Pan, *Appl. Environ. Microbiol.*, 2000, **66**, 788–793.
- 142 W. Liu, J. Hong, D. R. Bevan and Y. H. P. Zhang, *Biotechnol. Bioeng.*, 2009, **103**, 1087–1094.
- 143 B. A. Van Der Veen, G. Potocki-Véronèse, C. Albenne, G. Joucla, P. Monsan and M. Remaud-Simeon, *FEBS Lett.*, 2004, **560**, 91–97.
- 144 H. Lin, H. Tao and V. W. Cornish, *J. Am. Chem. Soc.*, 2004, **126**, 15051–15059.
- 145 P. Peralta-Yahya, B. T. Carter, H. Lin, H. Tao and V. W. Cornish, *J. Am. Chem. Soc.*, 2008, **130**, 17445–17452.
- 146 S. S. K. Abadi, M. C. Deen, J. N. Watson, F. S. Shidmoosavee and A. J. Bennet, *Glycobiology*, 2020, **30**, 325–333.
- 147 J. Jumper, R. Evans, A. Pritzel, T. Green, M. Figurnov, O. Ronneberger, K. Tunyasuvunakool, R. Bates, A. Židek, A. Potapenko, A. Bridgland, C. Meyer, S. A. A. Kohl, A. J. Ballard, A. Cowie, B. Romera-Paredes, S. Nikolov, R. Jain, J. Adler, T. Back, S. Petersen, D. Reiman, E. Clancy, M. Zielinski, M. Steinegger, M. Pacholska, T. Berghammer, S. Bodenstein, D. Silver, O. Vinyals, A. W. Senior, K. Kavukcuoglu, P. Kohli and D. Hassabis, *Nature*, 2021, **596**, 583–589.
- 148 S. L. Lovelock, R. Crawshaw, S. Basler, C. Levy, D. Baker, D. Hilvert and A. P. Green, *Nature*, 2022, **606**, 49–58.
- 149 A. Madani, B. Krause, E. R. Greene, S. Subramanian, B. P. Mohr, J. M. Holton, J. L. Olmos, C. Xiong, Z. Z. Sun, R. Socher, J. S. Fraser and N. Naik, *Nat. Biotechnol.*, 2023, **41**, 1099–1106.
- 150 S. Studer, D. A. Hansen, Z. L. Pianowski, P. R. E. Mittl, A. Debon, S. L. Guffy, B. S. Der, B. Kuhlman and D. Hilvert, *Science*, 2018, **362**, 1285–1288.
- 151 S. Basler, S. Studer, Y. Zou, T. Mori, Y. Ota, A. Camus, H. A. Bunzel, R. C. Helgeson, K. N. Houk, G. Jiménez-Osés and D. Hilvert, *Nat. Chem.*, 2021, **13**, 231–235.
- 152 M. L. Zastrow and V. L. Pecoraro, *Biochemistry*, 2014, **53**, 957–978.
- 153 N. G. S. McGregor, J. Coines, V. Borlandelli, S. Amaki, M. Artola, A. Nin-Hill, D. Linzel, C. Yamada, T. Arakawa, A. Ishiwata, Y. Ito, G. A. Van Der Marel, J. D. C. Codée, S. Fushinobu, H. S. Overkleeft, C. Rovira and G. J. Davies, *Angew. Chem., Int. Ed.*, 2021, **60**, 5754–5758.
- 154 T. Ito, K. Saikawa, S. Kim, K. Fujita, A. Ishiwata, S. Kaeothip, T. Arakawa, T. Wakagi, G. T. Beckham, Y. Ito and S. Fushinobu, *Biochem. Biophys. Res. Commun.*, 2014, **447**, 32–37.
- 155 W. J. Jeong and W. J. Song, *Nat. Commun.*, 2022, **13**, 6844.
- 156 J. D. Schnettler, O. J. Klein, T. S. Kaminski, P.-Y. Colin and F. Hollfelder, *J. Am. Chem. Soc.*, 2023, **145**, 1083–1096.
- 157 J. F. Wardman, P. Rahfeld, F. Liu, C. Morgan-Lang, L. Sim, S. J. Hallam and S. G. Withers, *ACS Chem. Biol.*, 2021, **16**, 2004–2015.
- 158 S. Neun, P. Brear, E. Campbell, T. Tryfona, K. El Omari, A. Wagner, P. Dupree, M. Hyvönen and F. Hollfelder, *Nat. Chem. Biol.*, 2022, **18**, 1096–1103.
- 159 P.-Y. Colin, B. Kintsjes, F. Gielen, C. M. Miton, G. Fischer, M. F. Mohamed, M. Hyvönen, D. P. Morgavi, D. B. Janssen and F. Hollfelder, *Nat. Commun.*, 2015, **6**, 10008.
- 160 P. Rahfeld, J. F. Wardman, K. Mehr, D. Huff, C. Morgan-Lang, H. M. Chen, S. J. Hallam and S. G. Withers, *J. Biol. Chem.*, 2019, **294**, 16400–16415.
- 161 P. A. Romero, T. M. Tran and A. R. Abate, *Proc. Natl. Acad. Sci. U. S. A.*, 2015, **112**, 7159–7164.
- 162 R. Lipsh-Sokolik, O. Khersonsky, S. P. Schröder, C. de Boer, H. S. Overkleeft and S. J. Fleishman, *Science*, 2023, **379**, 195–201.
- 163 L. Wu, Z. Armstrong, S. P. Schro, C. D. Boer, M. Artola, J. M. F. G. Aerts, H. S. Overkleeft and G. J. Davies, *Curr. Opin. Chem. Biol.*, 2019, **53**, 25–36.
- 164 Y. Chen, Z. Armstrong, M. Artola, B. I. Florea, C.-L. Kuo, C. De Boer, M. S. Rasmussen, M. Abou Hachem, G. A. Van Der Marel, J. D. C. Codée, J. M. F. G. Aerts, G. J. Davies and H. S. Overkleeft, *J. Am. Chem. Soc.*, 2021, **143**, 2423–2432.
- 165 Z. Armstrong, C. Kuo, D. Lahav, B. Liu, R. Johnson, T. J. M. Beenakker, C. D. Boer, C. Wong, E. R. V. Rijssel, M. F. Debets, B. I. Florea, R. G. Boot, P. P. Geurink, H. Ovaa, M. V. D. Stelt, G. A. V. D. Marel, J. D. C. Codée, J. M. F. G. Aerts, L. Wu, H. S. Overkleeft and G. J. Davies, *J. Am. Chem. Soc.*, 2020, **142**, 13021–13029.
- 166 I. Chen, B. M. Dorr and D. R. Liu, *Proc. Natl. Acad. Sci. U. S. A.*, 2011, **108**, 11399–11404.
- 167 P. Knyphausen, M. Rangel Pereira, P. Brear, M. Hyvönen, L. Jermutus and F. Hollfelder, *Nat. Commun.*, 2023, **14**, 768.
- 168 R. S. Molina, G. Rix, A. A. Mengiste, B. Álvarez, D. Seo, H. Chen, J. E. Hurtado, Q. Zhang, J. D. García-García,

- Z. J. Heins, P. J. Almhjell, F. H. Arnold, A. S. Khalil, A. D. Hanson, J. E. Dueber, D. V. Schaffer, F. Chen, S. Kim, L. Á. Fernández, M. D. Shoulders and C. C. Liu, *Nat. Rev. Methods Primer*, 2022, **2**, 36.
- 169 K. M. Esvelt, J. C. Carlson and D. R. Liu, *Nature*, 2011, **472**, 499–503.
- 170 M. S. Morrison, C. J. Podracky and D. R. Liu, *Nat. Chem. Biol.*, 2020, **16**, 610–619.
- 171 K. A. Jones, H. M. Snodgrass, K. Belsare, B. C. Dickinson and J. C. Lewis, *ACS Cent. Sci.*, 2021, **7**, 1581–1590.
- 172 J. M. Grondin, K. Tamura, G. Déjean, D. W. Abbott and H. Brumer, *J. Bacteriol.*, 2017, **199**, e00860–e00816.
- 173 J. F. Wardman, L. Sim, J. Liu, T. A. Howard, A. Geissner, P. M. Danby, A. B. Boraston, W. W. Wakarchuk and S. G. Withers, *Nat. Chem. Biol.*, 2023, **19**, 1246–1255.
- 174 D. J. Shon, A. Kuo, M. J. Ferracane and S. A. Malaker, *Biochem. J.*, 2021, **478**, 1585–1603.
- 175 L. Sim, N. Thompson, A. Geissner, S. G. Withers and W. W. Wakarchuk, *Glycobiology*, 2022, **32**, 429–440.
- 176 R. P. Dyer and G. A. Weiss, *Cell Chem. Biol.*, 2022, **29**, 177–190.
- 177 E. Hardiman, M. Gibbs, R. Reeves and P. Bergquist, *Appl. Biochem. Biotechnol.*, 2010, **161**, 301–312.
- 178 A. J. Fairbanks, *Chem. Soc. Rev.*, 2017, **46**, 5128–5146.
- 179 K. S. Johansen, K. E. H. Frandsen, L. Lo Leggio, T. Tandrup and J.-G. Berrin, *Biochem. Soc. Trans.*, 2018, **46**, 1431–1447.
- 180 M. S. Jensen, G. Klinkenberg, B. Bissaro, P. Chylenski, G. Vaaje-Kolstad, H. F. Kvitvang, G. K. Nærdal, H. Sletta, Z. Forsberg and V. G. H. Eijsink, *J. Biol. Chem.*, 2019, **294**, 19349–19364.
- 181 C. Cheng, J. Haider, P. Liu, J. Yang, Z. Tan, T. Huang, J. Lin, M. Jiang, H. Liu and L. Zhu, *J. Agric. Food Chem.*, 2020, **68**, 15257–15266.