



## ORIGINAL ARTICLE

# Anterior fontanelle closure and diagnosis of non-syndromic craniosynostosis: a comparative study using computed tomography



Leopoldo Mandic Ferreira Furtado <sup>a,\*</sup>, José Aloysio da Costa Val Filho <sup>a</sup>,  
Leticia Silveira Freitas <sup>b</sup>, Aieska Kellen Dantas dos Santos <sup>a</sup>

<sup>a</sup> Vila da Serra Hospital e Biocor Instituto, Departamento de Neurocirurgia Pediátrica, Nova Lima, MG, Brazil

<sup>b</sup> Vila da Serra Hospital, Departamento de Pediatria, Nova Lima, MG, Brazil

Received 29 June 2021; accepted 26 October 2021

Available online 30 November 2021

### KEYWORDS

Anterior fontanel;  
Computed tomography;  
Suture;  
Craniosynostosis;  
Growth and development

### Abstract

**Objective:** Suspicion of early anterior fontanel (AF) closure is a common reason for referral to a pediatric neurosurgeon because of the suspected increased risk of developing craniosynostosis (CS) in spite of the absence of evidence in the literature. The aim of this study was to analyze the association between AF closure and the diagnosis of non-syndromic CS in Brazilian children.

**Methods:** An observational and case-cohort study was conducted to compare the incidence of closed AF between healthy children (group 1) and children diagnosed with non-syndromic CS (group 2) at a pediatric neurosurgery referral center. The accuracies of completely closed AF and diagnosis of CS were assessed.

**Results:** High-resolution three-dimensional reconstruction computed tomography scans were obtained for 140 children aged < 13 months, of whom 62.9% were boys and 37.1% were girls ( $p < 0.001$ ). The most common types of non-syndromic CS were trigonocephaly (34, 48%) and scaphocephaly (25, 35.7%). Closed fontanel (27, 38.6%) was observed in both groups, and a sensitivity of 36.1%, specificity of 72%, the positive predictive value of 59%, and negative predictive value of 51% were observed in the patients diagnosed with CS when AF closure occurred before the age of 6 months.

**Conclusion:** The results of this comparative study of AF closure and CS diagnosis suggest that early AF closure does not imply a diagnosis of CS. Pediatricians should be aware of the risk of misdiagnosis of CS in cases with a widely open AF in spite of the presence of CS.

© 2022 Sociedade Brasileira de Pediatria. Published by Elsevier Editora Ltda. This is an open access article under the CC BY-NC-ND license (<http://creativecommons.org/licenses/by-nc-nd/4.0/>).

## Introduction

The anterior fontanel (AF) is the largest and most important of the six fontanels in the newborn skull. Embryologically, it is composed of a connective tissue derived from the neural

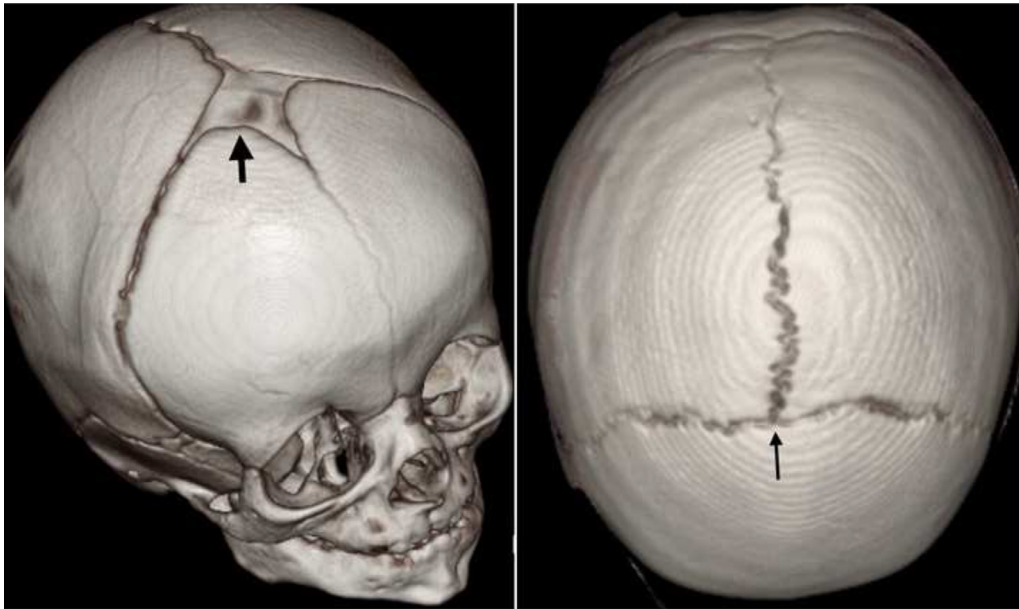
Study conducted at the Vila da Serra Hospital, Nova Lima, MG, Brazil.

\* Corresponding author.

E-mail: [lmandicster@gmail.com](mailto:lmandicster@gmail.com) (L.M. Furtado).

<https://doi.org/10.1016/j.jpmed.2021.10.004>

0021-7557/© 2022 Sociedade Brasileira de Pediatria. Published by Elsevier Editora Ltda. This is an open access article under the CC BY-NC-ND license (<http://creativecommons.org/licenses/by-nc-nd/4.0/>).



**Figure 1** Computed tomography image with three-dimensional reconstruction of the skull in healthy children. The anterior fontanel could be opened (thick black arrow; left) or closed or fused (thin black arrow) in a 4-month-old boy (right).

crest, that is, the ectomeninx, which has membranous remnants.<sup>1,2</sup> Anatomically, AF is described as a diamond-shaped structure on the cranial vault at the convergence of the metopic, sagittal, and coronal sutures (Figure 1).<sup>3,4</sup> Traditionally, the primary function of the fontanels is to allow the overlap of the cranial vault bones during birth, but the fontanels play no role during skull growth. This function has been attributed to the sutures of the skull, whose early fusion could lead to craniosynostosis (CS). CS is classified as either syndromic if associated with craniofacial syndromic conditions such as Crouzon and Apert syndrome and commonly presents with skull base restriction and midface hypoplasia (incidence: 1 in 30,000 live births) or non-syndromic if no such syndromes are identified (incidence: 1 in 2,000 live births).<sup>5-7</sup>

Although AF closure before six months of age has been considered rare in several reports and is an indication of abnormal conditions such as hyperthyroidism, aberrant cerebral development, microcephaly, and even CS, no strong evidence of the association between CS and early AF closure has been obtained thus far. The judgment of fontanel abnormality in such patients is a common reason for referral to a pediatric neurosurgeon, which could lead to unnecessary radiation exposure due to computed tomography (CT) scanning.<sup>8-12</sup> Furthermore, AF closure is dependent on factors such as ethnicity and sex, and several studies have considered it to occur during the first 24 months after birth, more specifically within 13 and 16 months of age.<sup>10,13-15</sup> By contrast, other studies found healthy children with AF closure at ages < 76 days.<sup>15,16</sup> Thus far, the association between CS and AF closure has not been proven in large series, and no study has examined this yet.

Therefore, the aim of this study was to examine the relationship between AF closure and CS diagnosis in the Brazilian population in the state of Minas Gerais.

## Materials and methods

### Study design

Data for this single-institution retrospective observational study were obtained from a prospectively maintained database and hospital charts and images of patients who attended a reference institute for pediatric neurosurgery in Nova Lima, Minas Gerais, Brazil between January 2020 and January 2021. This study was approved by the institutional ethics board and received appreciation from the government of Brazil (Plataforma Brasil; CAAE: 30620120.7.0000.5134). Furthermore, the manuscript adheres to the Strengthening the Reporting of Observational Studies in Epidemiology (STROBE) guidelines.<sup>17</sup>

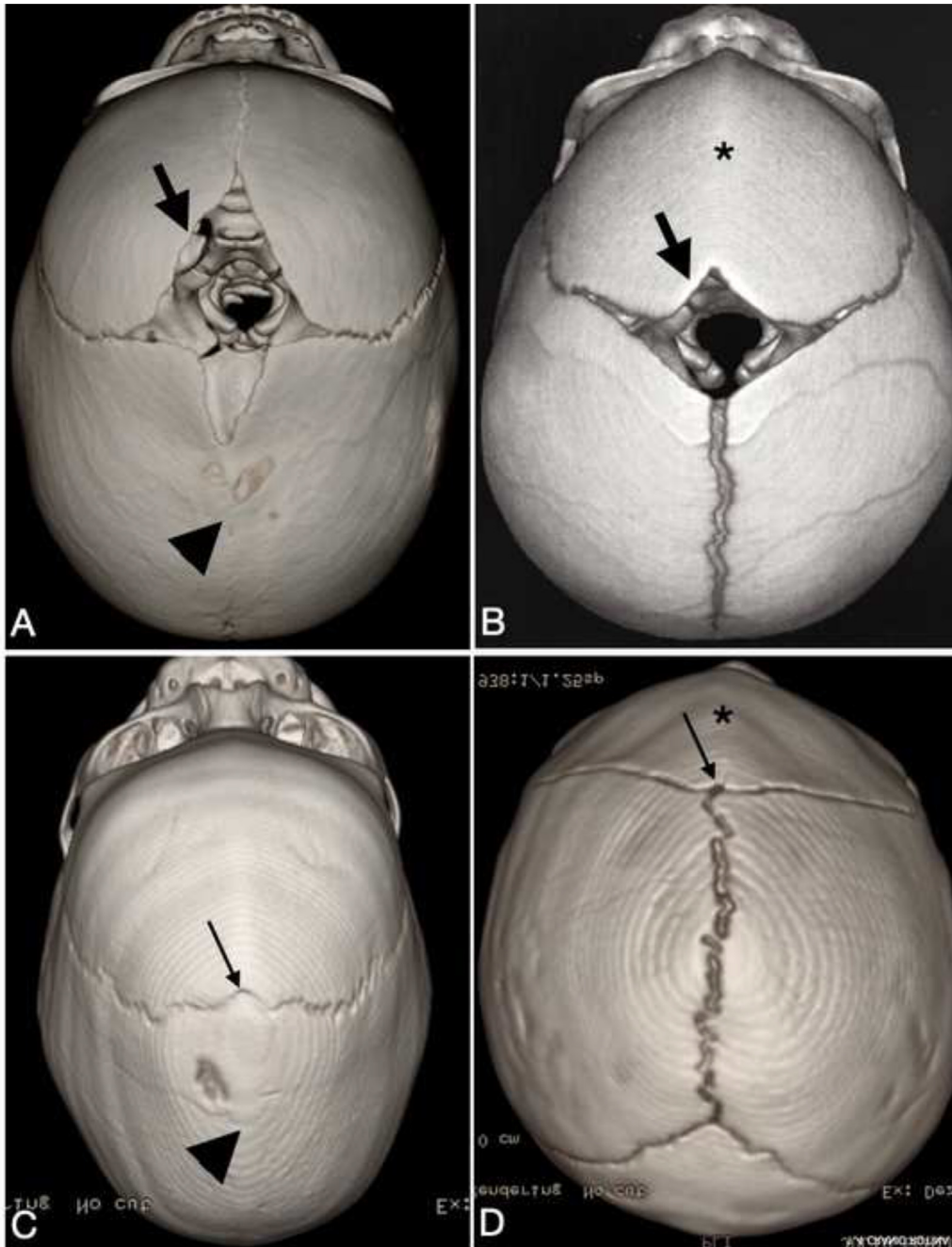
### Eligibility criteria

Children aged <13 months who were assessed at the institution between January 2020 and January 2021 were included in the study and divided into two groups. Group 1 was composed of children with no CS and no suspected diseases (e.g., microcephaly, hyperthyroidism, infection, hypoxia-ischemia sequelae, metabolic disorders, achondroplasia, osteogenesis imperfecta, intracranial hemorrhage, epilepsy, malnutrition, and oncological diseases) who have undergone neurosurgical procedures and were evaluated in the emergency department because of accidental mild head trauma and elected for CT scan in accordance with the protocol adopted for mild head trauma.<sup>18</sup> All CT scans were of high resolution. Three-dimensional reconstruction images were obtained to rule out skull fractures, and the intracranial compartment was examined to exclude intracranial bleeding due to trauma. Group 2 included patients with non-syndromic CS who underwent skull reconstructive neurosurgery

procedures during the study period by the same pediatric neurosurgery team and a CT scan with three-dimensional (3-D) reconstruction at the same institution.

For patients with suspected syndromic CS due to classical physical features such as exorbitism and maxillary hypoplasia, abnormalities of the ears, and syndactyly or fusion of multiple sutures on CT imaging or even early fusion of single sutures more likely associated with mutations such as anterior coronal and bicoronal CS, a consultation with the

geneticist and evaluation for gene mutations were required. If any mutation was identified, the patient was excluded from the study even without physical features of syndromic forms. Therefore, patients with classical syndromic forms such as Crouzon, Apert, Pfeiffer, and Saethre-Chotzen syndromes and other syndromes were excluded. Furthermore, patients with brain disorders such as hydrocephalus, other brain malformations, or skull fractures and Wormian bones in the AF were excluded.<sup>8</sup>



**Figure 2** Computed tomography image with three-dimensional reconstruction of the skull image in children with non-syndromic craniosynostosis, demonstrating that anterior fontanel (AF) could present as open (thick black arrow) or closed (thin black arrow). (A) A widely open AF is depicted in patients with (A) scaphocephaly and (B) trigonocephaly or (C) a completely fused AF in scaphocephaly and (D) trigonocephaly. The metopic suture is fused in trigonocephaly (\*). The sagittal suture is fused in the scaphocephaly (arrowhead).

**Table 1** Characteristics of the 70 children with non-syndromic craniosynostosis and their relative anterior fontanel (AF) closure proportions.

| Type of craniosynostosis                | Open AF | Closed AF | Total %   |
|---|---------|-----------|-----------|
| Trigonocephaly                          | 15      | 19        | 34 (48.6) |
| Scaphocephaly                           | 19      | 6         | 25 (35.7) |
| Anterior coronal craniosynostosis       | 4       | 1         | 5 (7.1)   |
| Brachycephaly                           | 2       | 0         | 2 (2.9)   |
| Lambdoid unilateral craniosynostosis    | 2       | 1         | 3 (4.3)   |
| Metopic + coronal unilateral synostosis | 0       | 1         | 1 (1.4)   |
| Total                                   | 42 (60) | 28 (40.0) | 70        |

## Data collection

The authors of the present study assessed data from the medical records of the hospital and private clinic where the interventions of the patients with CS ensued, such as age at attendance, sex, and those that warrant no exclusion factors. In addition, the patients' images were obtained in the DICOM format and transferred to the OsiriX imaging program (OsiriX, Geneva, Switzerland),<sup>19</sup> which was validated using ANVISA to ensure the use of the medical findings. The images were assessed by the senior author of this study, who assessed the normality of the brain and analyzed the skull surface using the 3-D reconstruction images in accordance with the following parameters: (1) if the AF was open or closed (open, all visible AFs independent of the size; closed, completely ossified or no fontanel in spite of all the sutures remaining open) and (2) the type of CS (Figure 1 and 2).

## Statistical analysis

The SPSS version 20 (IBM Corp., Armonk, NY), Minitab 16 (Minitab Inc., State College, PA, USA), and Excel Office 2010 software programs (Microsoft, Redmond, WA, USA) were used for the statistical analyses. A confidence interval of 95% was applied. The two-proportion equality test (chi-square) was used to compare the rates among the covariates of age and sex. P values < 0.005 were considered statistically significant.

To calculate the sensibility, specificity, positive predictive value, and negative predictive value of AF closure in relation to the non-syndromic CS diagnosis, the authors considered

the CT scan and clinical findings of CS as gold standards for the diagnosis of CS. Accordingly, the authors categorized the population of this study into those who were positive and those who were negative for CS and AF closure.

## Results

### Study population

During the study period, 140 children were assessed and distributed into the two groups. The overall sex distribution was as follows: 88 boys (62.9%) and 52 girls (37.1%) overall ( $p < 0.001$ ), with 44 (62.1%) and 43 boys (61.4%) boys in groups 1 and 2, respectively ( $p > 0.005$ ). The mean ages in groups 1 and 2 were 11.06 and 6.53 months, respectively ( $p = 0.047$ ). In addition, the incidence of trigonocephaly was highest, followed by scaphocephaly, in group 2, as shown in Table 1.

### AF closure

A completely open AF was observed in 86 patients (61.4%;  $p < 0.001$ ; Table 1). The distributions of open and closed fontanels were identical in the two groups, wherein 43 patients (61.4%) had open fontanels ( $p = 1.00$ ).

For closed AF, different age distribution was observed between the two groups; however, the CS group tended to have earlier AF closure (Table 2). The mean age at AF closure was 9.8 months (range, 3–13 months) in group 1 and 6.8 months (range, 1–13 months) in group 2. AF closure was found in 7 (26%) of the 27 children aged <3 months, in 27 patients (47.2%) between 3 and 8 months of age, and in 24 patients (40%) aged >8 months.

Despite the aforementioned high proportion of boys in both groups, no statistically significant differences were observed regarding AF closure and sex between groups 1 ( $p = 0.189$ ) and 2 ( $p = 0.688$ ).

The children with trigonocephaly were more susceptible to AF closure, accounting for 67.8% of this study population. Conversely, the children with scaphocephaly were less susceptible to AF closure, with 76% of them having an open AF at diagnosis.

### AF fusion and accuracy of CS diagnosis

Fontanel closure in the patients aged <13 months presented a sensitivity of 38%, specificity of 61%, positive predictive value of 50%, and negative predictive value of 50% for predicting a CS diagnosis. In the patients aged <6 months, early

**Table 2** Closure of anterior fontanel (AF) according to age in the two groups.

|         | Age (months) | n  | AF closure, n (%) | AF open, n (%) |
|---------|--------------|----|-------------------|----------------|
| Group 1 | ≤3           | 13 | 2 (15.4)          | 11 (84.6)      |
|         | >3 to <6     | 10 | 7 (70.0)          | 3 (30.0)       |
|         | 6 to <13     | 47 | 19 (40.4)         | 28 (59.6)      |
| Group 2 | ≤3           | 14 | 5 (35.7)          | 9 (64.3)       |
|         | >3 to <6     | 22 | 8 (36.4)          | 14 (63.6)      |
|         | 6 to <13     | 34 | 15 (44.1)         | 19 (55.9)      |

fontanel closure presented a sensitivity of 36.1%, specificity of 72%, the positive predictive value of 59%, and a negative predictive value of 51% for the same purpose.

## Discussion

### Demographic influences of AF closure

Historically, although six months have been considered the cutoff age for early AF closure, no consensus has been reached as to the specific age for normal AF closure, and great variability has been reported. AF closure might occur after days,<sup>15,16</sup> during the second month,<sup>20</sup> after 3.7 months,<sup>21</sup> after 6 months,<sup>2</sup> and even after 13.8 months.<sup>11</sup> In addition, this variability was attributed to ethnicity, sex, and ancestry.<sup>1,2,5,12,14,15</sup> In the present study, normal Brazilian children presented an overall closure rate of 40%, with a mean age of 9.8 months. Likewise, the AF fusion rate in the Maōri/Pacifican population of New Zealand was 47% at 12 months compared with 24% in the English population. Boran et al.<sup>22</sup> found a similar AF closure rate at a mean of 9.7 months in Turkish children. This pattern of closure could reinforce the role of ethnicity, especially in the Brazilian population, which consists of a mixture of Africans, Europeans, and indigenous Brazilians, displaying a trend toward early AF closure compared with European, Iranian, and Chinese children.<sup>2,13,23-25</sup>

Several studies have reported the influence of sex on AF closure in boys who presented with AF closure at an average of 1 month earlier than girls.<sup>26</sup> By contrast, the present study adopted head trauma and CS as the inclusion criteria, with higher incidence rates in males than in females according to the literature, which explains the disparity between the sexes.<sup>18,27</sup> Despite this fact, in a population that consisted mostly of boys, like other studies, our study did not show a statistically significant impact of sex on AF closure.<sup>2</sup>

### AF closure and CS diagnosis

Early AF closure was observed in the CS group compared with the healthy population, explaining the abnormal ossification on the four sutures in association with AF, which was mainly found in the children with trigonocephaly and the most common type of CS in this study. In addition, this higher incidence rate is different from most studies, which showed scaphocephaly as the most common CS. The result of this study is in accordance with previous observations of changes in the epidemiology of CS with increasing incidence of trigonocephaly in the last two decades. Several risk factors have been reported, such as less folic acid intake, under the assumption that folic acid could prevent midline defects such as early metopic fusion. Another factor is valproic acid use during pregnancy and other environmental risk factors such as external pressure on the fetal skull, birth presentation, birth weight, gestational age, and mode of delivery.<sup>27-29</sup>

This discrepancy in AF closure pattern between patients with trigonocephaly and those with scaphocephaly reveals the different directions of suture fusion in the two conditions. Indeed, in most children with scaphocephaly, fusion begins on the posterior segment of the suture toward the AF. During diagnosis, due to the

abnormal skull shape, the AF remains completely open. Otherwise, the metopic suture starts to close in the proximity of the AF, which greatly impacts early closure. This directionality of fusion was corroborated by Lottering et al.,<sup>26</sup> who investigated the temporal closure of AF in 256 healthy children aged <30 months by using multislice cranial CT scans and observed the posteroanterior pattern of sagittal suture ossification and metopic closure near the AF and the coronal sutures synchronously.

Although AF assessment is initially performed using the examiner's index fingers,<sup>30</sup> currently, CT scanning is considered the gold standard for measuring the AF size and confirming the closure.<sup>2</sup> In addition, our study used high-resolution CT images to examine AF closure and diagnose CS after closure appearance in 65.5% of the patients but low sensitivity and specificity were obtained. In addition, this was the first study to show that AF fusion was not highly associated with CS diagnosis, with 38% sensitivity and 61% specificity. Nonetheless, if the authors considered patients aged <6 months, the sensitivity would increase to 61%, reinforcing the awareness of this phenomenon as a sign of skull ossification abnormality. Hence, pediatricians should consider the risk of CT radiation after judging an AF closure, pointing out mild head trauma.<sup>18</sup> Conversely, pediatric neurosurgeons should evaluate patients before performing a CT scan to diagnose a potential CS.

To the best of our knowledge, a major risk is the misdiagnosis of the absence of CS based on the perception of a widely open AF. This false-negative interpretation might have occurred in 30% of our sample, and half of the patients who presented with an open AF had CS (Figure 2). Thus far, no information regarding this fact is available in the literature, and the authors surmise that the risk is crucial in cases with scaphocephaly. Therefore, pediatricians should be aware of this fact and focus on the existence of skull deformities that are characteristic of CS to reduce the possibility of a misdiagnosis.

### Limitations and future directions

This study has some limitations, such as the absence of data regarding the measurement sizes of the AFs and retrospective data. Moreover, evaluation by the senior author might have caused a bias. However, the main strength of this study was the valid comparison between healthy children and those with non-syndromic CS based on representative population data, thereby highlighting the considerable number of children with CS presenting with open AF. Furthermore, further studies comparing fontanel sizes could reveal the cutoff for AF closure in Brazilian children and clarify this relationship.

### Conclusion

In spite of the overall low accuracy of closed AF in the diagnosis of CS, AF closure remains a concern, showing different patterns worldwide. To our knowledge, early suture fusion in CS is clearly associated with closed AF in some conditions, especially in trigonocephaly. Moreover, to avoid misdiagnosis, pediatricians should be aware of the risk of wide-open AF concomitantly in children with a true CS. Therefore, the

best practical suggestion is primarily to gather information regarding skull deformity patterns and rule out classical non-syndromic CS before referring to a pediatric neurosurgeon for concern of closed AF, thereby avoiding unnecessary CT scan procedures.

## Conflicts of interest

The authors declare no conflicts of interest.

## References

- Omotade OO, Kayode CM, Adeyemo AA. Anterior fontanelle size in Nigerian children. *Ann Trop Paediatr*. 1995;15:89–91.
- Kirkpatrick J, Bowie S, Mirjalili SA. Closure of the anterior and posterior fontanelle in the New Zealand population: A computed tomography study. *J Paediatr Child Health*. 2019;55:588–93.
- Moffett EA, Aldridge K. Size of the anterior fontanelle: three-dimensional measurement of a key trait in human evolution. *Anat Rec (Hoboken)*. 2014;297:234–9.
- Sundaresan M, Wright M, Price AB. Anatomy and development of the fontanelle. *Arch Dis Child*. 1990;65:386–7.
- D'Antoni AV, Donaldson OI, Schmidt C, Macchi V, De Caro R, Oskouian RJ, et al. A comprehensive review of the anterior fontanelle: embryology, anatomy, and clinical considerations. *Childs Nerv Syst*. 2017;33:909–14.
- Da Costa AC, Anderson VA, Holmes AD, Lo P, Wray AC, Chong DK, et al. Longitudinal study of the neurodevelopmental characteristics of treated and untreated non-syndromic craniosynostosis in infancy. *Childs Nerv Syst*. 2013;29:985–95.
- Wang JC, Nagy L, Demke JC. Syndromic craniosynostosis. *Facial Plast Surg Clin North Am*. 2016;24:531–43.
- Woods RH, Johnson D. Absence of the anterior fontanelle due to a fontanelle bone. *J Craniofac Surg*. 2010;21:448–9.
- Uzura M, Furuya Y, Akashi K, Sekino H. The persistence of an open anterior fontanel in a 4-year-old girl. *Childs Nerv Syst*. 2005;21:83–5.
- Duc G, Largo RH. Anterior fontanel: size and closure in term and preterm infants. *Pediatrics*. 1986;78:904–8.
- Kiesler J, Ricer R. The abnormal fontanel. *Am Fam Phys*. 2003;67:2547–52.
- Pindrik J, Ye X, BG Ji, Pendleton C, Ahn ES. Anterior fontanelle closure and size in full-term children based on head computed tomography. *Clin Pediatr (Phila)*. 2014;53:1149–57.
- Acheson RM, Jefferson E. Some observations on the closure of the anterior fontanelle. *Arch Dis Child*. 1954;29:196–8.
- Wu T, Li HQ. Changes of anterior fontanel size in children aged 0-2 years. *Zhonghua Er Ke Za Zhi*. 2012;50:493–7.
- Aisenson MR. Closing of the anterior fontanelle. *Pediatrics*. 1950;6:223–6.
- G/meskel T, Kinfu Y, Worku B. The size of anterior fontanel in neonates and infants in Addis Ababa. *Ethiop Med J*. 2008;46:47–53.
- von Elm E, Altman DG, Egger M, Pocock SJ, Gøtzsche PC, Vandenbroucke JP, STROBE Initiative. The Strengthening of Reporting of Observational Studies in Epidemiology (STROBE) statement: guidelines for reporting observational studies. *J Clin Epidemiol*. 2008;61:344–9.
- Furtado LM, da Costa Val Filho JA, Dos Santos AR, E Sá RF, Sandes BL, Hon Y, et al. Pediatric minor head trauma in Brazil and external validation of PECARN rules with a cost-effectiveness analysis. *Brain Inj*. 2020;34:1467–71.
- Rosset A, Spadola L, Ratib O. OsiriX: an open-source software for navigating in multidimensional DICOM images. *J Digit Imaging*. 2004;17:205–16.
- Bajwa M, Srinivasan D, Nishikawa H, Rodrigues D, Solanki G, White N. Normal fusion of the metopic suture. *J Craniofac Surg*. 2013;24:1201–5.
- Sarigecili E, Makharoblidze K, Çobanogullari MD, Yildirim DD, Komur M, Okuyaz C. Neurodevelopmental risk evaluation of premature closure of the anterior fontanelle. *Childs Nerv Syst*. 2021;37:561–6.
- Boran P, Oğuz F, Furman A, Sakarya S. Evaluation of fontanel size variation and closure time in children followed up from birth to 24 months. *J Neurosurg Pediatr*. 2018;22:323–9.
- Chang BF, Hung KL. Measurements of anterior fontanels in Chinese. *Zhonghua Min Guo Xiao Er Ke Yi Xue Hui Za Zhi*. 1990;31:307–12.
- Esmaili M, Esmaili M, Ghane Sharbaf F, Bokharaie S. Fontanel size from birth to 24 months of age in Iranian children. *Iran J Child Neurol*. 2015;9:15–23.
- Pedroso FS, Rotta N, Quintal A, Giordani G. Evolution of anterior fontanel size in normal infants in the first year of life. *J Child Neurol*. 2008;23:1419–23.
- Lottering N, Alston CL, Barry MD, MacGregor DM, Gregory LS. Temporal mapping of the closure of the anterior fontanelle and contiguous sutures using computed tomography, in silico models of modern infants. *J Anat*. 2020;237:379–90.
- Lee HQ, Hutson JM, Wray AC, Lo PA, Chong DK, Holmes AD, et al. Changing epidemiology of non-syndromic craniosynostosis and revisiting the risk factors. *J Craniofac Surg*. 2012;23:1245–51.
- Mocquard C, Aillet S, Riffaud L. Recent advances in trigonocephaly. *Neurochirurgie*. 2019;65:246–51.
- Furtado LM, da Costa Val Filho JA, Hon YP, Sandes BL, Brandão Vianna BS, Valadares FW, et al. A technique for minimizing the need for hemotransfusion in non-syndromic craniosynostosis surgery. *J Craniofac Surg*. 2021;32:247–51.
- Popich GA, Smith DW. Fontanels: range of normal size. *J Pediatr*. 1972;80:749–52.