

Acta Crystallographica Section E

Structure Reports

Online

ISSN 1600-5368

rac-(3*S*,4*Z*)-3-Chloro-4-[2-(3-fluorobenzylidene)hydrazinylidene]-1-methyl-3,4-dihydro-1*H*-2λ⁶,1-benzothiazine-2,2-dione

 Muhammad Shafiq,^a M. Nawaz Tahir,^{b*} Islam Ullah Khan^c and Saeed Ahmad^d
^aDepartment of Chemistry, Government College University, Faisalabad, Pakistan,

^bUniversity of Sargodha, Department of Physics, Sargodha, Pakistan, ^cMaterials Chemistry Laboratory, Department of Chemistry, Government College University, Lahore, Pakistan, and ^dDepartment of Chemistry, Gomal University, Dera Ismail Khan, K.P.K, Pakistan

Correspondence e-mail: dmntahir_uos@yahoo.com

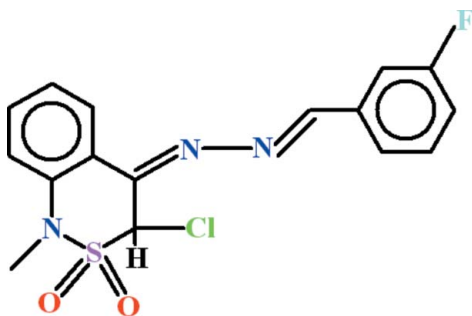
Received 6 May 2012; accepted 13 May 2012

 Key indicators: single-crystal X-ray study; $T = 296$ K; mean $\sigma(\text{C}-\text{C}) = 0.005$ Å; R factor = 0.050; wR factor = 0.120; data-to-parameter ratio = 13.5.

In the title compound, $\text{C}_{16}\text{H}_{13}\text{ClFN}_3\text{O}_2\text{S}$, the dihedral angle between the benzene rings is $4.47(3)^\circ$. The conformation of the thiazine ring is a half-chair and the Cl atom is in an axial orientation. In the crystal, molecules are linked by $\text{C}-\text{H}\cdots\text{F}$ interactions, generating $C(12)$ chains propagating in $[011]$. Aromatic $\pi-\pi$ stacking interactions [centroid-centroid separations = $3.753(2)$ and $3.758(2)$ Å] also occur.

Related literature

For a related structure and background references, see: Shafiq *et al.* (2012). For further synthetic details, see: Shafiq *et al.* (2011*a,b*). For ring conformations, see: Cremer & Pople (1975).



Experimental

Crystal data

 $\text{C}_{16}\text{H}_{13}\text{ClFN}_3\text{O}_2\text{S}$
 $M_r = 365.80$

 Triclinic, $P\bar{1}$
 $a = 7.0072(3)$ Å
 $b = 8.9402(4)$ Å
 $c = 13.3438(6)$ Å
 $\alpha = 98.184(3)^\circ$
 $\beta = 90.510(2)^\circ$
 $\gamma = 98.389(3)^\circ$
 $V = 818.19(6)$ Å³
 $Z = 2$
 Mo $K\alpha$ radiation
 $\mu = 0.39$ mm⁻¹
 $T = 296$ K
 $0.26 \times 0.18 \times 0.12$ mm

Data collection

 Bruker Kappa APEXII CCD diffractometer
 Absorption correction: multi-scan (SADABS; Bruker, 2005)
 $T_{\min} = 0.930$, $T_{\max} = 0.960$

 11874 measured reflections
 2941 independent reflections
 1744 reflections with $I > 2\sigma(I)$
 $R_{\text{int}} = 0.065$

Refinement

 $R[F^2 > 2\sigma(F^2)] = 0.050$
 $wR(F^2) = 0.120$
 $S = 1.00$
 2941 reflections

 218 parameters
 H-atom parameters constrained
 $\Delta\rho_{\text{max}} = 0.33$ e Å⁻³
 $\Delta\rho_{\text{min}} = -0.32$ e Å⁻³

Table 1

Hydrogen-bond geometry (Å, °).

$D-\text{H}\cdots A$	$D-\text{H}$	$\text{H}\cdots A$	$D\cdots A$	$D-\text{H}\cdots A$
$\text{C5}-\text{H5}\cdots\text{F1}^i$	0.93	2.53	3.442 (5)	167

 Symmetry code: (i) $x, y - 1, z - 1$.

Data collection: APEX2 (Bruker, 2009); cell refinement: SAINT (Bruker, 2009); data reduction: SAINT; program(s) used to solve structure: SHELXS97 (Sheldrick, 2008); program(s) used to refine structure: SHELXL97 (Sheldrick, 2008); molecular graphics: ORTEP-3 for Windows (Farrugia, 1997) and PLATON (Spek, 2009); software used to prepare material for publication: WinGX (Farrugia, 1999) and PLATON.

MS gratefully acknowledges the Higher Education Commission, Islamabad, Pakistan, for providing a scholarship under the Indigenous PhD Program (PIN 042-120567-PS2-276).

Supplementary data and figures for this paper are available from the IUCr electronic archives (Reference: HB6778).

References

- Bruker (2005). SADABS. Bruker AXS Inc., Madison, Wisconsin, USA.
 Bruker (2009). APEX2 and SAINT. Bruker AXS Inc., Madison, Wisconsin, USA.
 Cremer, D. & Pople, J. A. (1975). *J. Am. Chem. Soc.* **97**, 1354-1358.
 Farrugia, L. J. (1997). *J. Appl. Cryst.* **30**, 565.
 Farrugia, L. J. (1999). *J. Appl. Cryst.* **32**, 837-838.
 Shafiq, M., Khan, I. U., Arshad, M. N. & Siddiqui, W. A. (2011*a*). *Asian J. Chem.* **23**, 2101-2106.
 Shafiq, M., Tahir, M. N., Khan, I. U. & Zia-Ur-Rehman, M. (2012). *Acta Cryst. E* **68**, o338.
 Shafiq, M., Zia-ur-rehman, M., Khan, I. U., Arshad, M. N. & Khan, S. A. (2011*b*). *J. Chil. Chem. Soc.* **56**, 527-531.
 Sheldrick, G. M. (2008). *Acta Cryst. A* **64**, 112-122.
 Spek, A. L. (2009). *Acta Cryst. D* **65**, 148-155.

supplementary materials

Acta Cryst. (2012). E68, o1787 [doi:10.1107/S1600536812021654]

***rac*-(3*S*,4*Z*)-3-Chloro-4-[2-(3-fluorobenzylidene)hydrazinylidene]-1-methyl-3,4-dihydro-1*H*-2λ⁶,1-benzothiazine-2,2-dione**

Muhammad Shafiq, M. Nawaz Tahir, Islam Ullah Khan and Saeed Ahmad

Comment

As part of our ongoing synthetic and structural studies of thiazine derivatives (Shafiq *et al.*, 2012), we now describe the title compound, (I), (Fig. 1).

In (I), the benzene rings A (C1—C6) and B (C10—C15) are planar with r. m. s. deviation of 0.0040 and 0.0012 Å, respectively. The dihedral angle between A/B is 4.47 (3)°. The central group C (N2/N3/C9) is of course planar. The dihedral angle between A/C and B/C is 5.87 (7) and 1.48 (8)°, respectively. The thiazine ring D (C1/C6/N1/S1/C7/C8) is in the half-chair form, with the maximum puckering amplitude (Cremer & Pople, 1975), $Q = 0.563$ (3) Å. In the crystal, the molecules form chains due to H-bonding of C—H...F type (Table 1, Fig. 2). There exist π – π interactions between $CgA \cdots CgB^i$ [$i = 1 - x, -y, 1 - z$] and $CgB \cdots CgA^{ii}$ [$ii = 2 - x, -y, 1 - z$] at a distance of 3.758 (2) and 3.753 (2) Å, where CgA and CgB are the centroids of benzene rings A and B, respectively.

Experimental

The Schiff base derivative of (4*Z*)-4-hydrazinylidene-1-methyl-3,4-dihydro-1*H*-2,1-benzothiazine 2,2-dioxide and 3-fluorobenzaldehyde was prepared using the method reported previously (Shafiq *et al.* 2011*b*). The chlorination of the schiff base was undertaken using *N*-chloro succinimide and dibenzoylperoxide (Shafiq *et al.*, 2011*a*). The crude product of (I) was re-crystallized in ethyl acetate to obtain yellow needles of the title compound.

Refinement

The H-atoms were positioned geometrically (C–H = 0.93–0.96 Å) and refined as riding with $U_{iso}(H) = xU_{eq}(C)$, where $x = 1.5$ for methyl and $x = 1.2$ for aryl H-atoms.

Computing details

Data collection: *APEX2* (Bruker, 2009); cell refinement: *SAINTE* (Bruker, 2009); data reduction: *SAINTE* (Bruker, 2009); program(s) used to solve structure: *SHELXS97* (Sheldrick, 2008); program(s) used to refine structure: *SHELXL97* (Sheldrick, 2008); molecular graphics: *ORTEP-3 for Windows* (Farrugia, 1997) and *PLATON* (Spek, 2009); software used to prepare material for publication: *WinGX* (Farrugia, 1999) and *PLATON* (Spek, 2009).

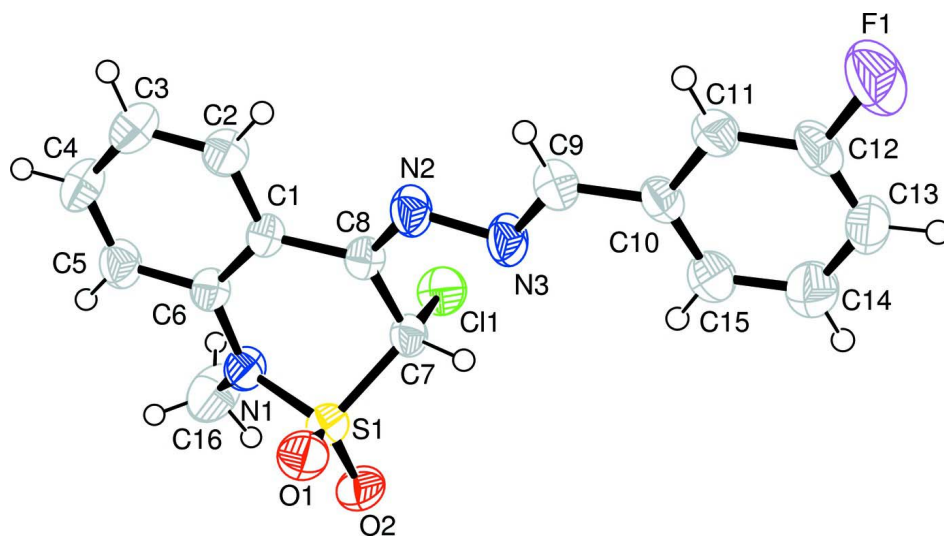


Figure 1

View of the title compound with displacement ellipsoids drawn at the 50% probability level.

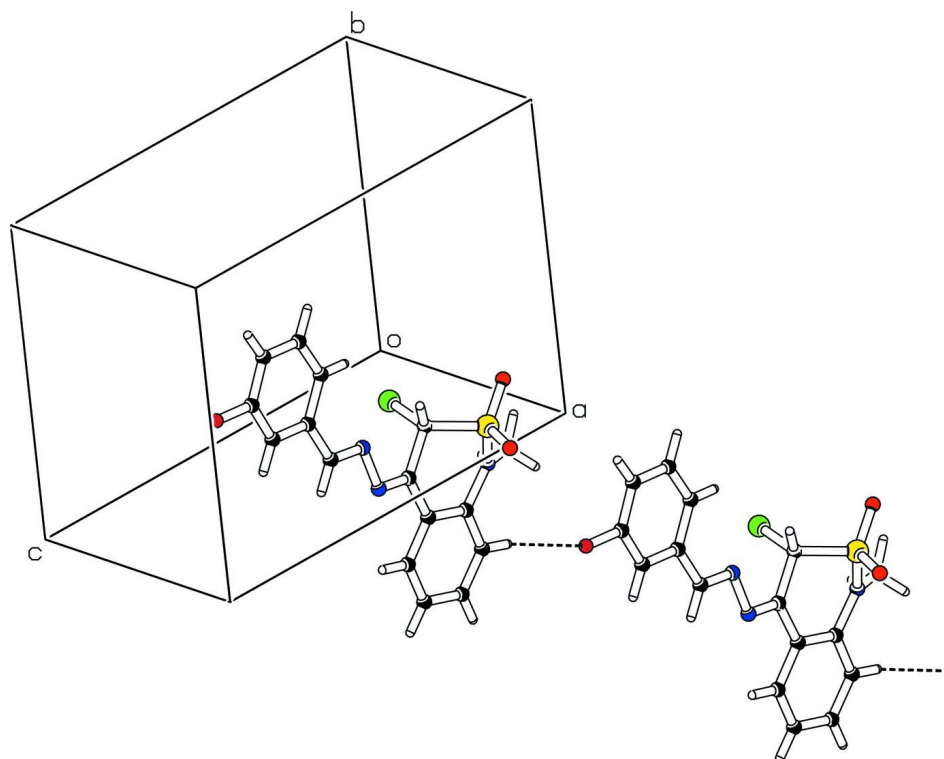


Figure 2

Partial packing diagram showing polymeric chains.

rac-(3*S*,4*Z*)-3-Chloro-4-[2-(3-fluorobenzylidene)hydrazinylidene]-3-chloro-1-methyl-3,4-dihydro-1*H*-2λ⁶,1-benzothiazine-2,2-dione

Crystal data

C₁₆H₁₃ClFN₃O₂S
M_r = 365.80
 Triclinic, *P* $\bar{1}$
 Hall symbol: -P 1
a = 7.0072 (3) Å
b = 8.9402 (4) Å
c = 13.3438 (6) Å
 α = 98.184 (3)°
 β = 90.510 (2)°
 γ = 98.389 (3)°
V = 818.19 (6) Å³

Z = 2
F(000) = 376
D_x = 1.485 Mg m⁻³
 Mo *K*α radiation, λ = 0.71073 Å
 Cell parameters from 1744 reflections
 θ = 2.3–25.3°
 μ = 0.39 mm⁻¹
T = 296 K
 Needle, yellow
 0.26 × 0.18 × 0.12 mm

Data collection

Bruker Kappa APEXII CCD
 diffractometer
 Radiation source: fine-focus sealed tube
 Graphite monochromator
 Detector resolution: 8.10 pixels mm⁻¹
 ω scans
 Absorption correction: multi-scan
 (*SADABS*; Bruker, 2005)
T_{min} = 0.930, *T_{max}* = 0.960

11874 measured reflections
 2941 independent reflections
 1744 reflections with *I* > 2σ(*I*)
R_{int} = 0.065
 θ_{\max} = 25.3°, θ_{\min} = 2.3°
h = -8→8
k = -10→10
l = -16→16

Refinement

Refinement on *F*²
 Least-squares matrix: full
R[*F*² > 2σ(*F*²)] = 0.050
wR(*F*²) = 0.120
S = 1.00
 2941 reflections
 218 parameters
 0 restraints
 Primary atom site location: structure-invariant
 direct methods

Secondary atom site location: difference Fourier
 map
 Hydrogen site location: inferred from
 neighbouring sites
 H-atom parameters constrained
 $w = 1/[\sigma^2(F_o^2) + (0.0478P)^2 + 0.0889P]$
 where $P = (F_o^2 + 2F_c^2)/3$
 $(\Delta/\sigma)_{\max} < 0.001$
 $\Delta\rho_{\max} = 0.33 \text{ e \AA}^{-3}$
 $\Delta\rho_{\min} = -0.32 \text{ e \AA}^{-3}$

Special details

Geometry. Bond distances, angles *etc.* have been calculated using the rounded fractional coordinates. All su's are estimated from the variances of the (full) variance-covariance matrix. The cell e.s.d.'s are taken into account in the estimation of distances, angles and torsion angles

Refinement. Refinement of *F*² against ALL reflections. The weighted *R*-factor *wR* and goodness of fit *S* are based on *F*², conventional *R*-factors *R* are based on *F*, with *F* set to zero for negative *F*². The threshold expression of *F*² > σ(*F*²) is used only for calculating *R*-factors(gt) *etc.* and is not relevant to the choice of reflections for refinement. *R*-factors based on *F*² are statistically about twice as large as those based on *F*, and *R*-factors based on ALL data will be even larger.

Fractional atomic coordinates and isotropic or equivalent isotropic displacement parameters (Å²)

	<i>x</i>	<i>y</i>	<i>z</i>	<i>U_{iso}</i> */ <i>U_{eq}</i>
Cl1	0.49246 (13)	0.08066 (10)	0.23725 (7)	0.0532 (4)
S1	0.86510 (13)	0.02559 (10)	0.15593 (7)	0.0428 (3)
F1	0.8027 (4)	0.4684 (3)	0.88468 (18)	0.0894 (11)

O1	1.0538 (3)	0.0163 (3)	0.19335 (18)	0.0532 (9)
O2	0.8416 (4)	0.1283 (3)	0.08580 (18)	0.0561 (10)
N1	0.7533 (4)	-0.1425 (3)	0.1110 (2)	0.0426 (10)
N2	0.7629 (4)	-0.0292 (3)	0.4293 (2)	0.0459 (11)
N3	0.7744 (4)	0.1263 (3)	0.4676 (2)	0.0483 (11)
C1	0.7272 (4)	-0.2167 (3)	0.2815 (3)	0.0336 (11)
C2	0.7020 (5)	-0.3359 (4)	0.3404 (3)	0.0450 (12)
C3	0.6839 (5)	-0.4857 (4)	0.2968 (3)	0.0516 (16)
C4	0.6917 (5)	-0.5215 (4)	0.1934 (3)	0.0523 (16)
C5	0.7157 (5)	-0.4082 (4)	0.1340 (3)	0.0478 (12)
C6	0.7322 (4)	-0.2558 (4)	0.1761 (3)	0.0365 (12)
C7	0.7362 (4)	0.0683 (4)	0.2675 (2)	0.0369 (12)
C8	0.7431 (4)	-0.0574 (3)	0.3326 (3)	0.0349 (11)
C9	0.7800 (5)	0.1472 (4)	0.5641 (3)	0.0460 (14)
C10	0.7926 (5)	0.2996 (4)	0.6232 (3)	0.0403 (12)
C11	0.7939 (5)	0.3134 (4)	0.7280 (3)	0.0446 (12)
C12	0.8044 (5)	0.4569 (5)	0.7816 (3)	0.0509 (14)
C13	0.8143 (5)	0.5861 (4)	0.7388 (3)	0.0555 (16)
C14	0.8139 (6)	0.5733 (5)	0.6347 (3)	0.0616 (17)
C15	0.8029 (5)	0.4312 (4)	0.5773 (3)	0.0520 (16)
C16	0.6640 (7)	-0.1733 (4)	0.0094 (3)	0.0738 (19)
H2	0.69751	-0.31273	0.41045	0.0537*
H3	0.66630	-0.56307	0.33701	0.0617*
H4	0.68056	-0.62314	0.16378	0.0630*
H5	0.72107	-0.43369	0.06412	0.0575*
H7	0.79712	0.16603	0.30513	0.0445*
H9	0.77593	0.06299	0.59809	0.0550*
H11	0.78773	0.22787	0.76088	0.0531*
H13	0.82112	0.68101	0.77869	0.0670*
H14	0.82110	0.66031	0.60328	0.0737*
H15	0.80241	0.42290	0.50700	0.0627*
H16A	0.73119	-0.24304	-0.03305	0.1104*
H16B	0.67065	-0.07948	-0.01841	0.1104*
H16C	0.53138	-0.21768	0.01300	0.1104*

Atomic displacement parameters (\AA^2)

	U^{11}	U^{22}	U^{33}	U^{12}	U^{13}	U^{23}
Cl1	0.0468 (6)	0.0544 (6)	0.0638 (7)	0.0169 (5)	0.0014 (5)	0.0171 (5)
S1	0.0479 (6)	0.0375 (6)	0.0431 (6)	0.0047 (4)	0.0054 (4)	0.0072 (4)
F1	0.118 (2)	0.096 (2)	0.0487 (17)	0.0188 (16)	0.0047 (15)	-0.0117 (13)
O1	0.0366 (14)	0.0522 (16)	0.0688 (18)	0.0026 (12)	0.0021 (13)	0.0062 (14)
O2	0.0778 (19)	0.0452 (16)	0.0494 (17)	0.0094 (13)	0.0105 (14)	0.0197 (13)
N1	0.0589 (19)	0.0380 (18)	0.0290 (17)	0.0038 (14)	-0.0007 (14)	0.0021 (14)
N2	0.062 (2)	0.0408 (19)	0.0339 (19)	0.0118 (15)	-0.0019 (15)	-0.0016 (14)
N3	0.070 (2)	0.0406 (19)	0.0321 (19)	0.0104 (16)	-0.0009 (16)	-0.0043 (14)
C1	0.0342 (19)	0.031 (2)	0.035 (2)	0.0057 (15)	-0.0041 (16)	0.0025 (16)
C2	0.049 (2)	0.044 (2)	0.042 (2)	0.0071 (18)	-0.0016 (18)	0.0060 (19)
C3	0.059 (3)	0.038 (2)	0.059 (3)	0.0051 (19)	-0.007 (2)	0.014 (2)
C4	0.064 (3)	0.032 (2)	0.059 (3)	0.0044 (19)	-0.007 (2)	0.004 (2)

C5	0.057 (2)	0.044 (2)	0.040 (2)	0.0084 (19)	0.0006 (19)	-0.0031 (19)
C6	0.038 (2)	0.036 (2)	0.035 (2)	0.0062 (16)	-0.0027 (16)	0.0032 (17)
C7	0.040 (2)	0.034 (2)	0.034 (2)	0.0038 (16)	0.0010 (16)	-0.0024 (16)
C8	0.0325 (19)	0.035 (2)	0.036 (2)	0.0037 (15)	-0.0034 (16)	0.0025 (16)
C9	0.048 (2)	0.047 (2)	0.043 (3)	0.0120 (18)	0.0026 (19)	0.0019 (19)
C10	0.041 (2)	0.046 (2)	0.032 (2)	0.0069 (17)	0.0038 (16)	-0.0009 (18)
C11	0.049 (2)	0.047 (2)	0.036 (2)	0.0043 (18)	0.0045 (18)	0.0031 (18)
C12	0.054 (2)	0.066 (3)	0.027 (2)	0.006 (2)	0.0025 (18)	-0.010 (2)
C13	0.055 (3)	0.042 (2)	0.065 (3)	0.007 (2)	0.006 (2)	-0.008 (2)
C14	0.071 (3)	0.056 (3)	0.056 (3)	0.007 (2)	0.003 (2)	0.005 (2)
C15	0.062 (3)	0.053 (3)	0.039 (2)	0.006 (2)	0.0028 (19)	0.002 (2)
C16	0.123 (4)	0.056 (3)	0.039 (3)	0.002 (3)	-0.016 (3)	0.008 (2)

Geometric parameters (Å, °)

C11—C7	1.774 (3)	C10—C11	1.386 (6)
S1—O1	1.427 (2)	C10—C15	1.395 (5)
S1—O2	1.426 (3)	C11—C12	1.369 (6)
S1—N1	1.620 (3)	C12—C13	1.353 (6)
S1—C7	1.772 (3)	C13—C14	1.377 (6)
F1—C12	1.365 (5)	C14—C15	1.378 (6)
N1—C6	1.418 (5)	C2—H2	0.9300
N1—C16	1.461 (5)	C3—H3	0.9300
N2—N3	1.402 (4)	C4—H4	0.9300
N2—C8	1.281 (5)	C5—H5	0.9300
N3—C9	1.274 (5)	C7—H7	0.9800
C1—C2	1.404 (5)	C9—H9	0.9300
C1—C6	1.402 (6)	C11—H11	0.9300
C1—C8	1.477 (4)	C13—H13	0.9300
C2—C3	1.370 (5)	C14—H14	0.9300
C3—C4	1.375 (6)	C15—H15	0.9300
C4—C5	1.365 (5)	C16—H16A	0.9600
C5—C6	1.386 (5)	C16—H16B	0.9600
C7—C8	1.521 (5)	C16—H16C	0.9600
C9—C10	1.464 (5)		
O1—S1—O2	119.60 (17)	F1—C12—C13	118.7 (4)
O1—S1—N1	110.77 (16)	C11—C12—C13	124.2 (4)
O1—S1—C7	103.50 (14)	C12—C13—C14	118.3 (4)
O2—S1—N1	108.96 (15)	C13—C14—C15	119.8 (4)
O2—S1—C7	111.18 (16)	C10—C15—C14	120.9 (4)
N1—S1—C7	101.18 (15)	C1—C2—H2	119.00
S1—N1—C6	117.9 (2)	C3—C2—H2	119.00
S1—N1—C16	121.1 (2)	C2—C3—H3	120.00
C6—N1—C16	120.9 (3)	C4—C3—H3	120.00
N3—N2—C8	113.5 (3)	C3—C4—H4	120.00
N2—N3—C9	111.1 (3)	C5—C4—H4	120.00
C2—C1—C6	117.8 (3)	C4—C5—H5	119.00
C2—C1—C8	118.9 (3)	C6—C5—H5	119.00
C6—C1—C8	123.2 (3)	C11—C7—H7	109.00

C1—C2—C3	121.3 (4)	S1—C7—H7	109.00
C2—C3—C4	119.9 (3)	C8—C7—H7	109.00
C3—C4—C5	120.2 (3)	N3—C9—H9	119.00
C4—C5—C6	121.1 (4)	C10—C9—H9	119.00
N1—C6—C1	121.4 (3)	C10—C11—H11	121.00
N1—C6—C5	118.9 (3)	C12—C11—H11	121.00
C1—C6—C5	119.7 (3)	C12—C13—H13	121.00
C11—C7—S1	110.70 (15)	C14—C13—H13	121.00
C11—C7—C8	109.6 (2)	C13—C14—H14	120.00
S1—C7—C8	108.8 (2)	C15—C14—H14	120.00
N2—C8—C1	119.6 (3)	C10—C15—H15	120.00
N2—C8—C7	122.2 (3)	C14—C15—H15	120.00
C1—C8—C7	118.2 (3)	N1—C16—H16A	109.00
N3—C9—C10	122.1 (3)	N1—C16—H16B	109.00
C9—C10—C11	118.9 (3)	N1—C16—H16C	109.00
C9—C10—C15	122.0 (4)	H16A—C16—H16B	110.00
C11—C10—C15	119.0 (3)	H16A—C16—H16C	109.00
C10—C11—C12	117.9 (3)	H16B—C16—H16C	109.00
F1—C12—C11	117.2 (4)		
O1—S1—N1—C6	56.5 (3)	C2—C1—C8—C7	-169.8 (3)
O2—S1—N1—C6	-170.0 (2)	C8—C1—C2—C3	179.1 (3)
C7—S1—N1—C6	-52.8 (3)	C6—C1—C2—C3	0.4 (5)
O1—S1—N1—C16	-128.2 (3)	C6—C1—C8—N2	-170.9 (3)
O2—S1—N1—C16	5.4 (3)	C1—C2—C3—C4	0.5 (5)
C7—S1—N1—C16	122.6 (3)	C2—C3—C4—C5	-0.6 (5)
N1—S1—C7—C11	-63.9 (2)	C3—C4—C5—C6	-0.1 (5)
O1—S1—C7—C8	-58.3 (2)	C4—C5—C6—N1	-178.8 (3)
O2—S1—C7—C8	172.1 (2)	C4—C5—C6—C1	1.0 (5)
N1—S1—C7—C8	56.5 (2)	C11—C7—C8—N2	-97.9 (3)
O1—S1—C7—C11	-178.68 (18)	C11—C7—C8—C1	82.4 (3)
O2—S1—C7—C11	51.7 (2)	S1—C7—C8—N2	141.0 (3)
C16—N1—C6—C5	31.8 (5)	S1—C7—C8—C1	-38.7 (3)
S1—N1—C6—C5	-152.9 (3)	N3—C9—C10—C11	178.6 (3)
S1—N1—C6—C1	27.3 (4)	N3—C9—C10—C15	-1.2 (5)
C16—N1—C6—C1	-148.0 (3)	C9—C10—C11—C12	-179.6 (3)
C8—N2—N3—C9	175.3 (3)	C15—C10—C11—C12	0.3 (5)
N3—N2—C8—C1	-179.5 (3)	C9—C10—C15—C14	179.7 (4)
N3—N2—C8—C7	0.9 (4)	C11—C10—C15—C14	-0.1 (5)
N2—N3—C9—C10	179.9 (3)	C10—C11—C12—F1	179.1 (3)
C2—C1—C6—N1	178.7 (3)	C10—C11—C12—C13	-0.3 (6)
C2—C1—C6—C5	-1.1 (4)	F1—C12—C13—C14	-179.3 (3)
C8—C1—C6—N1	0.0 (4)	C11—C12—C13—C14	0.0 (6)
C8—C1—C6—C5	-179.8 (3)	C12—C13—C14—C15	0.2 (6)
C6—C1—C8—C7	8.9 (4)	C13—C14—C15—C10	-0.2 (6)
C2—C1—C8—N2	10.5 (4)		

Hydrogen-bond geometry (Å, °)

$D-H\cdots A$	$D-H$	$H\cdots A$	$D\cdots A$	$D-H\cdots A$
$C5-H5\cdots F1^i$	0.93	2.53	3.442 (5)	167

Symmetry code: (i) $x, y-1, z-1$.