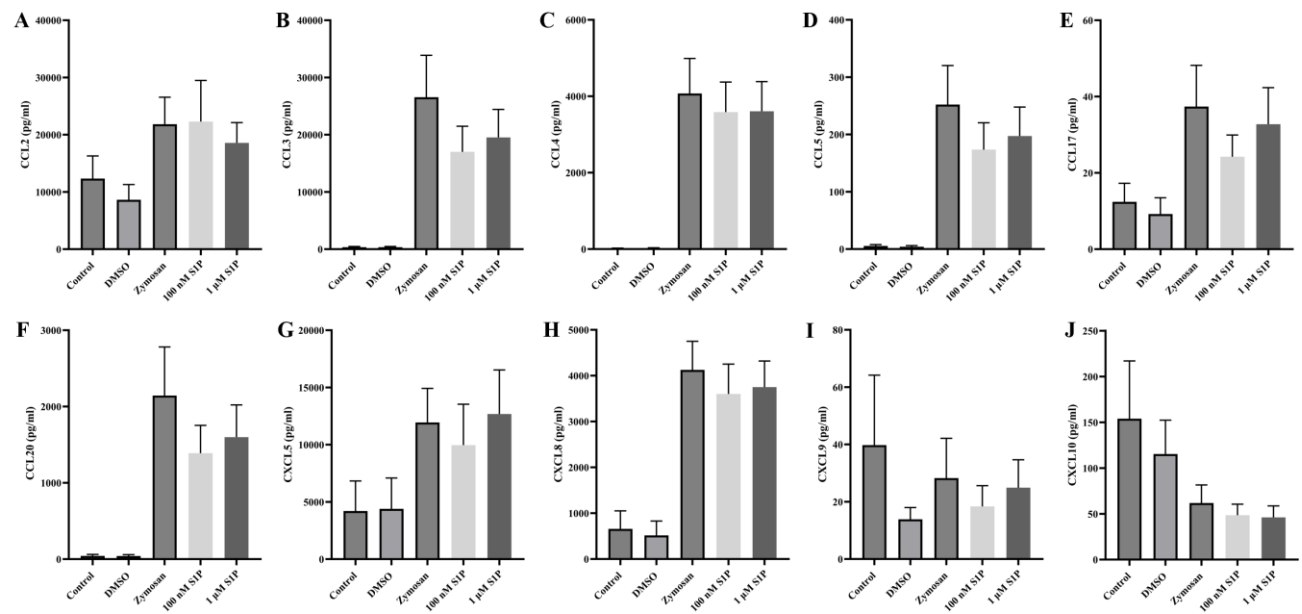
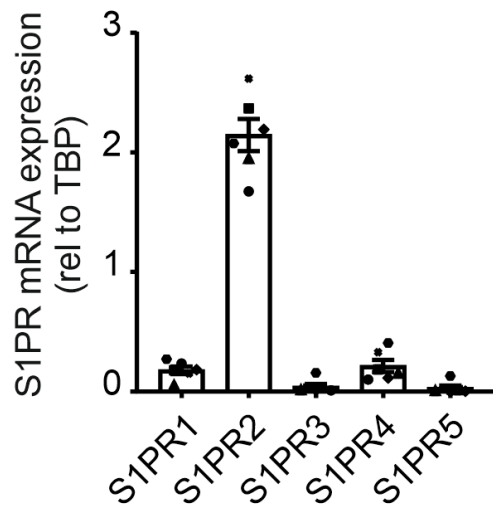


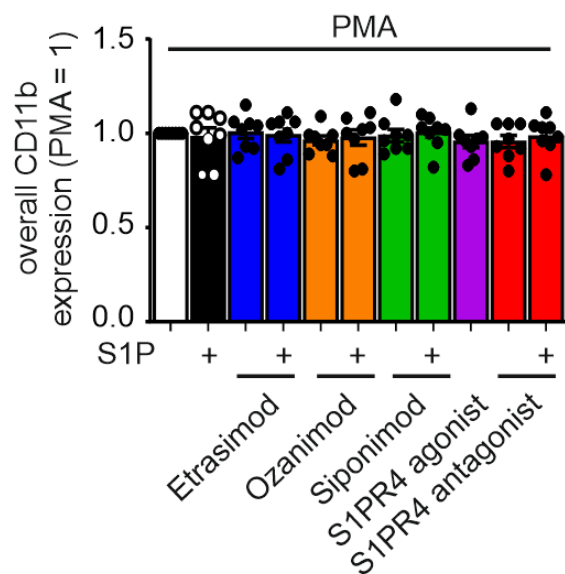
Supplementary Materials



Supplementary Figure 2: (A)-(J) Chemokine secretion by macrophages after addition of S1P (100 nM or 1 μM) and stimulation with Zymosan A (50 μg/ml) for 24 h (data shown: mean + SEM, n = 8).

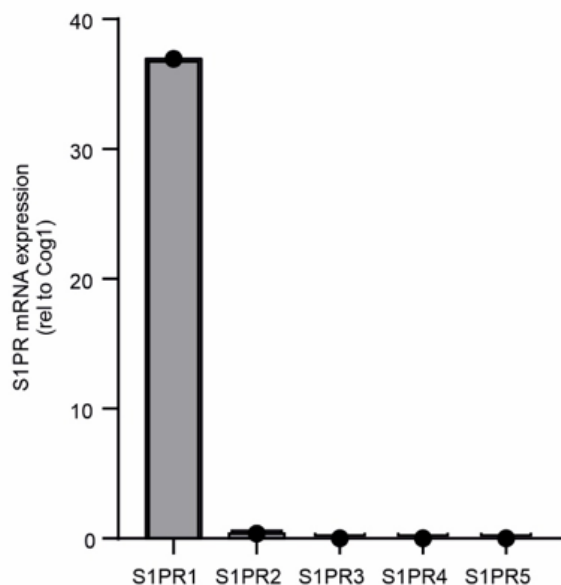


Supplementary Figure 3: mRNA expression levels of S1PR1-5 in macrophages (data shown: mean + SEM, n = 6).

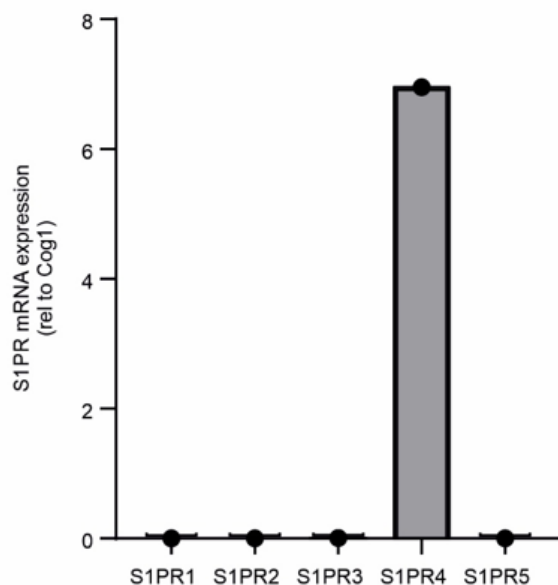


Supplementary Figure 4: Expression level of overall CD11b in PMA-stimulated neutrophils (data shown: mean + SEM, n = 8).

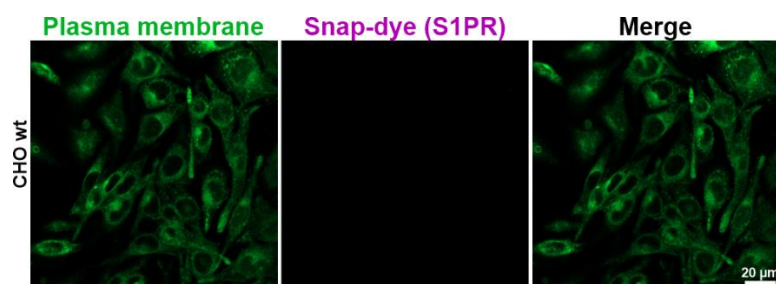
A



B



Supplementary Figure 5: Expression level of human S1PR in (A) the CHO_S1PR1 and (B) the CHO_S1PR4 cell lines.



Supplementary Figure 6: Representative image of confocal microscopy of CHO-K1 wt cells. Plasma membrane staining is shown in the first column, SNAP-tag dye in the second, and the composite of both channels in the third.