

## CRISPR-Knockout Screen Identifies Dmap1 as a Regulator of Chemically Induced Reprogramming and Differentiation of Cardiac Progenitors

JASON S. L. YU<sup>1b</sup>,<sup>a,f</sup> GIORGIA PALANO,<sup>b</sup> CINDY LIM,<sup>c</sup> ALDO MOGGIO,<sup>b</sup> LAUREN DROWLEY,<sup>c</sup> ALLEYN T. PLOWRIGHT,<sup>d</sup> MOHAMMAD BOHLOOLY-Y,<sup>e</sup> BARRY S. ROSEN,<sup>e</sup> EMIL M. HANSSON,<sup>b,\*</sup> QING-DONG WANG,<sup>c,\*</sup> KOSUKE YUSA<sup>a,g</sup>

**Key Words.** Cardiac progenitors • Chemical reprogramming • Clustered regularly interspaced short palindromic repeats-Cas9 • Genome-wide screen • CpG methylation

<sup>a</sup>Stem Cell Genetics, Wellcome Sanger Institute, Hinxton, Cambridge, United Kingdom; <sup>b</sup>KI/AZ Integrated CardioMetabolic Center (ICMC), Department of Medicine, Karolinska Institutet, Huddinge, Sweden; <sup>c</sup>Bioscience Heart Failure, Cardiovascular, Renal and Metabolism, IMED Biotech Unit, AstraZeneca, Gothenburg, Sweden; <sup>d</sup>Medicinal Chemistry, Cardiovascular, Renal and Metabolism, IMED Biotech Unit, AstraZeneca, Gothenburg, Sweden; <sup>e</sup>Discovery Sciences, IMED Biotech Unit, AstraZeneca, Gothenburg, Sweden; <sup>f</sup>Department of Cell Biology, The Francis Crick Institute, London, United Kingdom; <sup>g</sup>Stem Cell Genetics, Institute for Frontier Life and Medical Sciences, Kyoto University, Kyoto, Japan

Correspondence: Kosuke Yusa, Ph.D., Stem Cell Genetics, Institute for Frontier Life and Medical Sciences, Kyoto University, Kyoto, 606-8507 Japan. Telephone: 81-75-751-4005; e-mail: k.yusa@infront.kyoto-u.ac.jp

Received August 23, 2018; accepted for publication March 2, 2019; first published online April 1, 2019.

<http://dx.doi.org/10.1002/stem.3012>

\*Contributed equally.

This is an open access article under the terms of the Creative Commons Attribution License, which permits use, distribution and reproduction in any medium, provided the original work is properly cited.

### ABSTRACT

Direct *in vivo* reprogramming of cardiac fibroblasts into myocytes is an attractive therapeutic intervention in resolving myogenic deterioration. Current transgene-dependent approaches can restore cardiac function, but dependence on retroviral delivery and persistent retention of transgenic sequences are significant therapeutic hurdles. Chemical reprogramming has been established as a legitimate method to generate functional cell types, including those of the cardiac lineage. Here, we have extended this approach to generate progenitor cells that can differentiate into endothelial cells and cardiomyocytes using a single inhibitor protocol. Depletion of terminally differentiated cells and enrichment for proliferative cells result in a second expandable progenitor population that can robustly give rise to myofibroblasts and smooth muscle. Deployment of a genome-wide knockout screen with clustered regularly interspaced short palindromic repeats-guide RNA library to identify novel mediators that regulate the reprogramming revealed the involvement of DNA methyltransferase 1-associated protein 1 (Dmap1). Loss of Dmap1 reduced promoter methylation, increased the expression of Nkx2-5, and enhanced the retention of self-renewal, although further differentiation is inhibited because of the sustained expression of Cdh1. Our results hence establish Dmap1 as a modulator of cardiac reprogramming and myocytic induction. *STEM CELLS* 2019;37:958–972

### SIGNIFICANCE STATEMENT

The present study demonstrates the chemically induced conversion of mouse cardiac fibroblasts into progenitors using transforming growth factor- $\beta$ /Alk5 inhibition coupled with hypoxia. Utilizing this protocol, two progenitor populations of differing potency were generated: an initial population that could give rise to endothelial and cardiomyocyte lineages and a second population that is more lineage restricted toward myofibroblast and smooth muscle. In characterizing the biology behind this reprogramming using a clustered regularly interspaced short palindromic repeats-knockout-based genome-wide screen, this study aims to drive the development of novel therapeutics that can improve cardiac function by promoting the *in situ* induction of cardiac progenitors.

### INTRODUCTION

Cardiovascular disease (CVD) represents the single leading cause of mortality throughout the world [1]. Myocardial infarction is the most common consequence of CVD, whereby acute coronary thrombosis leads to large-scale cardiomyocyte (CM) death and fibrotic scarring. Fibrotic repair is inadequate reparation for CM loss, weakening the contractile properties of the heart and increasing the risk of heart failure and mortality.

Although the mammalian heart has some, albeit limited capacity for cardiomyogenesis, this largely restricted to early developmental stages [2–4] and is insufficient in replacing the large amounts of CM lost following infarction. Transplantation of pluripotent stem cells (PSCs)-derived CM has been shown to improve cardiac function in primate models, but low engraftment efficiency coupled with the sheer number required to restore cardiac function represents significant therapeutic hurdles [5, 6]. Consequently, there is

a dire need to derive cardiac cell types that are more amenable for regenerative therapies.

Analogous to many other organs, cardiac progenitors (CPs) have been identified in the rodent and human adult heart, which upon isolation and transplantation have varying levels of success in ameliorating cardiac dysfunction [7–11]. However, there is currently a lack of consensus as to the exact molecular identity that define CP [12]. Moreover, these cells have either no or limited cardiomyogenic potential [13,14], and their beneficial effects upon the heart post-transplantation is likely because of paracrine effects rather than true restoration of CM [15]. Furthermore, their relative scarcity and difficulty of isolation precludes any meaningful use as regenerative therapy. In contrast, *Nkx2-5*<sup>+</sup> CPs, which emerge during embryogenesis, are bipotent and can differentiate into CM and smooth muscle (SM), thus possessing a greater regenerative capacity and serving as a useful marker of progenitor properties [16]. However, these cells are unable to sustain these properties in vitro and are unsuitable for direct therapeutic use. Nonetheless, direct reprogramming approaches converting terminally differentiated mouse cardiac fibroblast (CF) into multipotent CP by transient expression of cardiogenic factors and chemically defined expansion have been reported [17,18]. However, such approaches ultimately depend on exogenous gene expression and genomic integration of transgenes, which compromises their use in a therapeutic setting.

Fully chemically induced approaches have the potential to generate efficacious progenitor populations that are more suited for therapeutic use. Small molecules are more readily amenable to drug development, potentiating the in situ regeneration of the heart and other organs. Chemical reprogramming has already permitted the derivation of induced PSCs, hepatocytes, neurons, and CM from mouse and human fibroblasts, utilizing a variety of chemical compounds that act to alter the epigenetic and gene expression networks to redirect cells to a new fate [19–22]. Although this approach is capable of generating terminally differentiated cell types in vitro, whether these cells are truly fully functional remains unknown. Furthermore, it is also unclear whether such an approach can generate progenitor populations that retain differentiation potency concurrent with self-renewal, as the genetic and epigenetic pathways regulating these processes are undefined.

Murine CF demonstrates remarkable plasticity as forced expression of cardiogenic factors *Gata4*, *Mef2c*, and *Tbx5* induces in vivo conversion into CM [23]. Suppression of fibrotic signaling via small molecules improves the kinetics of this reprogramming, whereas targeted suppression of transforming growth factor- $\beta$  (TGF- $\beta$ ) receptors *Alk4,5,7* increases the CM yield [24,25], establishing TGF- $\beta$  signaling as a key axis regulating conversion toward the cardiac lineage [26]. Additionally, there is evidence supporting the ability of hypoxic conditions to stimulate cardiac regeneration via decreased myocardial fibrosis [27], thereby defining the conditions through which small molecules are able to induce the formation of regenerative progenitors in a transgene-free context.

In this study, we have developed a robust chemically induced reprogramming protocol that permits the derivation of progenitor populations from mouse CF independent of transgene-mediated approaches. Initially, the resultant progenitor colonies can spontaneously give rise to endothelial cells (ECs) and CM; however, depletion of these differentiated cells leads

to the emergence of a second progenitor population that is readily expandable, although differentiation potency appears restricted to the myofibroblast and SM lineages. Consequently, we performed a genome-wide clustered regularly interspaced short palindromic repeats (CRISPR)-Cas9 knockout screen to uncover the factors and pathways that could potentiate this reprogramming process. Our data further extend the utility of chemical-induced derivation of progenitor populations and constitutes a proof-of-principle demonstration of the power of forward genetic screens in uncovering the molecular basis behind this approach.

## MATERIALS AND METHODS

### Lineage Tracing and Reporter Mouse Lines

All animal experiments conducted in the United Kingdom were carried out in accordance with the Animals (Scientific Procedures) Acts 1986 and approved by the Wellcome Sanger Institute Ethics Committee. All animal experiments conducted in Sweden were performed in accordance with Swedish legislation and approved by the Stockholm South Animal Ethics Committee and the Gothenburg Ethics Committee for Experimental Animals (permit 47/15, 91-2013 and 95-2014, respectively). Cas9-expressing mouse line was generated by inserting the human *EF1a* promoter-driven Cas9 expression cassette into the *Rosa26* locus in mouse embryonic stem cell (ESC) line JM8 and is kept in the C57BL/6N background and used for CF isolation. ROSA26<sup>NKX2-5 Enhancer-BP-EGFP</sup> reporter mice were used to inform on *Nkx2-5* enhancer activity (generated in house, AstraZeneca). B6N.Cg-Tg(Pdgfra-cre/ERT)467Dbe/J mice (018280, Bar Harbor, Jackson Labs) were crossed with reporter mice Gt(ROSA)26Sor<sup>tm1.1(CAG-EGFP)<sup>Fsh</sup></sup> (32037-JAX, Jackson Labs). Recombination was induced via gavage of 2 mg tamoxifen (Sigma-Aldrich), resuspended in corn oil (20 mg/ml, Sigma-Aldrich), 1 day before heart isolation in 12-week-old mice. Immediately before sacrifice, heparin (1,000 IU, LEO Pharma) was injected intraperitoneally. The hearts were rinsed in ice-cold Dulbecco's phosphate-buffered saline (without Ca<sup>2+</sup> and Mg<sup>2+</sup>, Thermo Fisher Scientific) and processed for either fixation in paraformaldehyde (PFA), sectioning, and immunofluorescence using standard protocols or CF isolation, fluorescence-activated cell sorting (FACS) of enhanced green fluorescent protein positive (EGFP<sup>+</sup>) cells, and chemically induced reprogramming and differentiation experiments as described below. For sectioning, fixed hearts were incubated in 30% sucrose solution for 24 hours at 4°C and then embedded in OCT (Tissue-Tek O.C.T. Compound, Sakura Finetek) for cryopreservation and cryostat sectioning. Sections (10  $\mu$ m thick) were rinsed in phosphate-buffered saline (PBS), permeabilized in PBS containing 0.3% Triton-X100, and then incubated in 5% bovine serum albumin (BSA; Sigma-Aldrich) solution at room temperature (RT). Primary antibodies were diluted in PBS supplemented with 0.1% BSA and Triton-X100 and incubated overnight at 4°C. After PBS wash, fluorescently labeled secondary antibodies (Thermo Fisher Scientific) were diluted in staining buffer and incubated for 1 hour at RT. Hoechst 33342 solution (Sigma-Aldrich) was added for nuclear staining. Images were acquired using a Zeiss Axio Observer Z1-Axiocam 506 mono microscope (Zeiss). A list of antibodies and dilutions are available in Supporting Information Table S3.

### Cardiac Fibroblast Isolation

The hearts were isolated from 8- to 12 -week-old Cas9<sup>+</sup> mice and transferred to sterile cold Hank's balanced salt solution (HBBS; Sigma) + 2x Pen/Strep (Life Technologies). The hearts were then dissected, rinsed, and finely minced before transfer into digestion buffer prewarmed to 37°C (980 U/ml collagenase II [Life Technologies], 20 KU/ml DNase I [Stem Cell Technologies] in HBSS + 1x Pen/Strep) for 10 minutes. Digestion was then centrifuged for 5 minutes at 600g and incubated with 5 ml TryPLE (Life Technologies) for 5 minutes. Entire pellet was resuspended in 4.5 ml prewarmed CF media (15% fetal bovine serum [FBS], 1% NEAA, 1x Pen/Strep in Dulbecco's modified Eagle's medium [DMEM]+GlutaMAX [Life Technologies]) and passed through a 40 µm filter to remove any large undigested pieces. Cell suspension was plated onto four wells of a 0.1% gelatin-coated six-well plate. Plate was incubated overnight at 37°C and media was exchanged the following day. When confluent, cells were passaged once with 0.5% trypsin-EDTA (Life Technologies) before being frozen down at  $3 \times 10^5$  cells per milliliter in 90% FBS + 10% dimethyl sulfoxide (DMSO; Sigma-Aldrich).

### Chemically Induced Reprogramming and Maintenance of Progenitors

Plates were coated overnight with laminin-211 (BioLamina, 10 µg/ml). CF were trypsinized, washed twice with PBS, and plated onto laminin-211-coated plates at 1140 cells per centimeter square in reprogramming media (5% Knockout™ Serum Replacement, 15% ESC qualified FBS, 1% non-essential amino acid, and 0.1 mM β-mercaptoethanol in DMEM+GlutMAX [Life Technologies] supplemented with 2 µM SB431542 [Selleck Chem] or RepSox/AZ12799734 [AstraZeneca] under 5% O<sub>2</sub>). Reprogramming was conducted for 17 days during which colonies of CP emerge and proliferate. Upon completion, individual colonies were picked and expanded under reprogramming conditions to enrich for chemically induced smooth muscle progenitor (ciSMP). Cells were passaged at least five times to ensure complete depletion of nonreprogrammed/differentiated cells. ciSMPs were routinely maintained in reprogramming media and frozen at  $1 \times 10^6$  cells in 90% ESC-qualified FBS + 10% DMSO.

### Differentiation of ciSMP

Growth factor reduced Matrigel (BD Biosciences)-coated plates were prepared at 1:30 dilution in DMEM+GlutaMAX to provide a prodifferentiation matrix. SM differentiation was initiated by passaging ciSMP onto these plates in differentiation media (2% FBS in DMEM+GlutaMAX) supplemented with 5 ng/ml TGF-β (Cambridge Bioscience) and cultured in a humidified incubator at 37°C with 5% CO<sub>2</sub> for 3–7 days with media change every 2 days.

### CRISPR-Knockout Screening and Hit Validation

Screening was conducted as previously described [28] with modifications. In brief, upon validation of Cas9 activity using self-targeting green fluorescent protein (GFP) reporter (Supporting Information Fig. S2A), CFs (p1) were trypsinized and transduced with mouse genome-wide lentiviral CRISPR-guide RNA (gRNA) library 2 (Addgene, 67,988) at a multiplicity of infection of 0.3, which was confirmed by flow cytometry for BFP expression 2 days post-transduction. Mutant CF library (p2) was then

selected with 3 µg/ml puromycin (Sigma-Aldrich) for 4 days and then passaged into reprogramming conditions for 17 days. Following reprogramming, cells were trypsinized and subjected to nuclear extraction and immunostaining for Nkx2-5 before FACS to isolate Nkx2-5<sup>LOW</sup> and Nkx2-5<sup>HIGH</sup> populations. Following decrosslinking and genomic DNA extraction, gRNA-containing regions were amplified via two rounds of polymerase chain reaction (PCR), before submission for sequencing. Statistical analysis and generation of hit list was conducted via model-based analysis of genome-wide CRISPR-Cas9-knockout (MAGeCK). For validation experiments, single guides were cloned into lentiviral CRISPR backbone (pPGK-U6gRNA[BbsI]-Puro-2A-BFP, Addgene 50,946) and transduced into CF before reprogramming following the same timescale. A list of raw gRNA read-counts and MAGeCK output is available in Supporting Information Table S1. A list of gRNA is available in Supporting Information Table S2.

### Intracellular Staining and FACS

In brief, trypsinized cells were incubated on ice for 10 minutes in hypotonic buffer (20 mM Tris-HCl, 0.1 mM EDTA, 5 mM MgCl<sub>2</sub>; Sigma-Aldrich) before the addition of 1% Triton-X-100 (Sigma-Aldrich) to induce plasma membrane lysis. Solution was then centrifuged for 3 minutes at 500g and washed twice with hypotonic buffer +0.5% Triton-X-100 to further purify nuclei. Nuclear pellet was then fixed for 10 minutes at RT with 4% PFA (Thermo Fisher) with agitation. Nuclei were then washed once with cold PBS and subjected to immunostaining with Nkx2-5 antibody (Santa Cruz) followed by FACS.

### Immunostaining

Cells were fixed in 4% PFA for 10 minutes at RT. Fixed cells were then blocked and permeabilized with the appropriate buffer (10% goat/donkey serum [Sigma-Aldrich], 0.5% Triton-X-100, 2.5% IgG-free BSA [Jackson Labs]) in PBS for 1 hour at RT. Cells were then incubated with primary antibody overnight at 4°C with agitation in blocking/permeabilizing buffer without Triton-X-100. Next day, cells were washed thrice and incubated with PBS-diluted secondary 1 hour at RT in darkness. Cells were then incubated for 30 minutes with 1:1,000 dilution 4',6-diamidino-2-phenylindole (DAPI; Sigma-Aldrich) and phalloidin (PL) counterstain (Life Technologies), and imaged via confocal microscopy (LM700, Zeiss).

### Immunoblotting

Cells were lysed in RIPA buffer (Sigma-Aldrich) supplemented with protease and phosphatase inhibitor cocktails at 1:100 dilution (Sigma-Aldrich). Protein quantification (BCA kit) and immunoblotting (NuPage system) was performed as per manufacturer's instructions (Thermo Fisher Scientific, Life Technologies). Proteins were transferred onto polyvinylidene difluoride membranes via electroblotting following manufacturer's instructions (BioRad). Membranes were incubated overnight with primary antibody in 5% BSA/milk in tris-buffered saline with 0.1% Tween 20, followed by 1 hour incubation at RT with the appropriate secondary antibody. Membranes were developed using enhanced chemiluminescence substrate (Thermo Fisher Scientific) onto radiographic film (Amersham). A list of antibodies is available in Supporting Information Table S3.

### Semiquantitative and Quantitative PCR

Total RNA was extracted using RNA Plus Mini Kit (Qiagen) following manufacturer's instructions. About 0.5–2  $\mu\text{g}$  of RNA was used for subsequent cDNA synthesis via Superscript III (Life Technologies). For semiquantitative PCR, standard PCR was performed using Platinum Taq Polymerase High Fidelity (Life Technologies) for the appropriate number of cycles for each gene, which was determined empirically. For quantitative real-time PCR, 3 microliter per reaction of 1:20 dilution of cDNA was used and real-time amplification performed following manufacturer's instructions (Brilliant III Ultra-Fast SYBR Green PCR Mix with Low ROX, Agilent). Data obtained are from three biological replicates ( $n = 3$ ), each consisting of two technical replicates. A list of primers used is available in Supporting Information Table S4.

### Bisulfite Sequencing and Promoter Methylation Analysis

Genomic DNA was extracted and converted via bisulfite reaction following manufacturer's instructions (DNasey Blood & Tissue kit, EpiTect Fast Bisulfite Conversion kit, Qiagen). Primers were designed to amplify CpG island regions adjacent or flanking the transcription start site (TSS) to gauge levels of promoter methylation. Regions were amplified from using 200 ng of bisulfite-treated template and DNA polymerase (EpiMark Hot Start Taq Polymerase, NEB). Resultant PCR product was cloned into a sequencing plasmid following manufacturer's instruction (PCR Cloning Kit, NEB) and submitted for Sanger sequencing. A list of primers used is available in Supporting Information Table S5.

### Cloning and Generation of Cas9-Resistant DNA Methyltransferase 1-Associated Protein 1 Rescue Mutant

Primers were designed to clone out the wild-type DNA methyltransferase 1-associated protein 1 (Dmap1) coding sequence from cDNA using high-fidelity PCR (Q5 Hot Start Taq Polymerase, NEB). Subsequent PCR product was cloned into lentiviral vector encoding for blastocystin resistance and BFP (EF1 $\alpha$ -BFP-2A-Bsd-2A-Dmap1). To ensure that Dmap1 can be encoded in the presence of Cas9 activity and g4 gRNA expression, site directed mutagenesis was performed to mutagenize the g4-gRNA binding site while retaining the native amino acid encoding sequence (5'-CCTTTTACTAACCCAGCTCGAAA-3' to 5'-CCCTTACC AATCCCGCCGCAA-3') following manufacturer's instructions (Q5 Site Directed Mutagenesis Kit, NEB). Transgene was introduced into Dmap1-knockout (KO) cells via lentiviral transduction. Plasmids used in this study are available from [https://www.addgene.org/Kosuke\\_Yusa/](https://www.addgene.org/Kosuke_Yusa/).

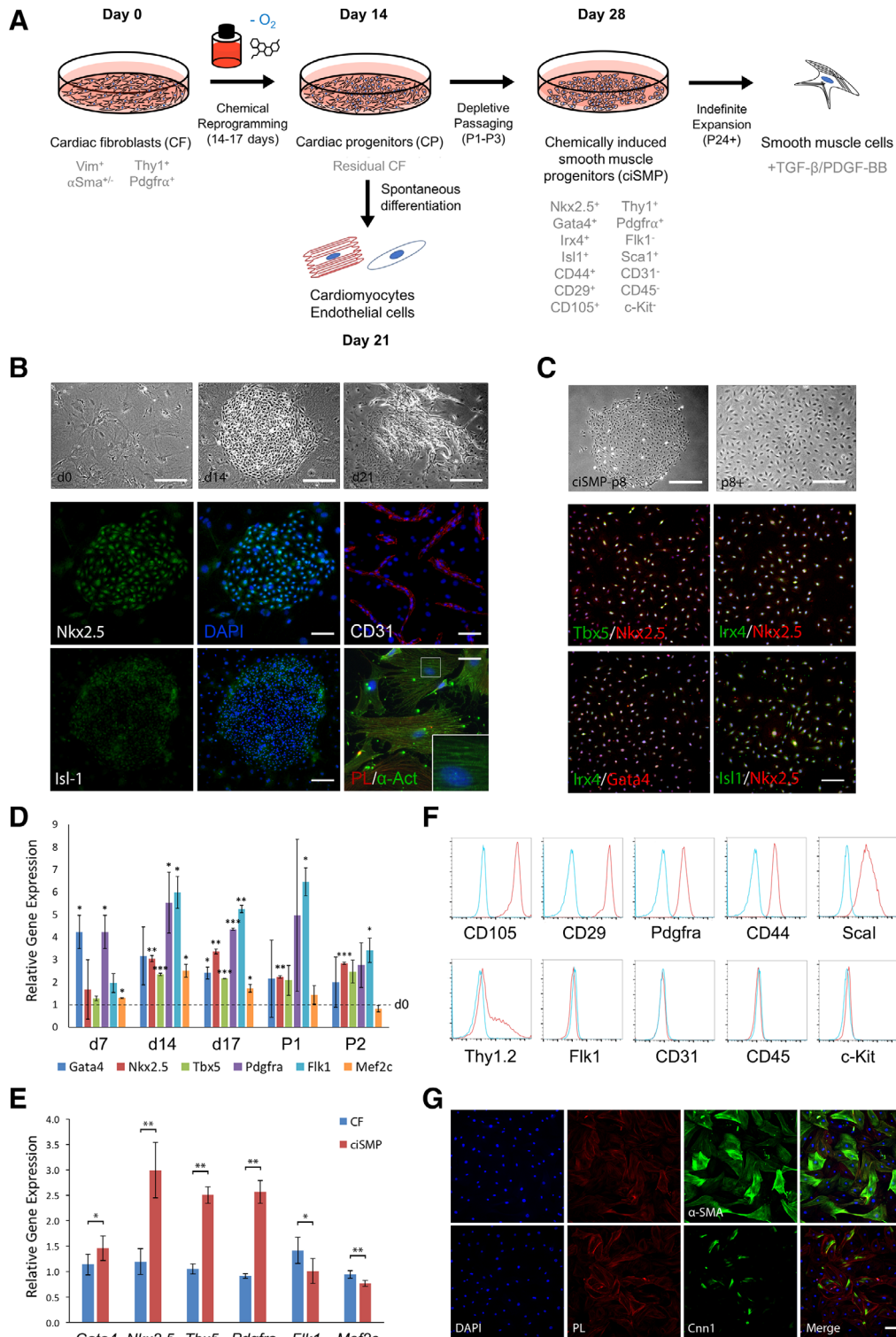
## RESULTS

### Alk5 Inhibition Efficiently Promotes the Derivation of Cardiac Progenitors

To explore the rationale by which small molecules are able to induce the derivation of the progenitor populations, we designed and implemented a robust protocol to convert CF into potential CP (Fig. 1A). Based on the importance of TGF- $\beta$  signaling and hypoxia in mediating cardiac reprogramming and organ regeneration [24, 25, 27, 29], we reasoned that TGF- $\beta$  pathway inhibition

under sustained hypoxia may potentiate the reprogramming of fibroblasts into progenitor populations. As a basal matrix, we used laminin-211 as this has been documented to support development of the heart and to drive the expansion of CP derived from mesenchymal stromal cells (MSCs) [30, 31]. Upregulation of CP marker expression, particularly *Nkx2-5*, is a key hallmark of progenitor identity during development [16, 32] and has therefore been used as the metric to assess reprogramming efficiency [16–18]. Validation of the initial isolation step confirmed the purification of fibroblasts as evidenced by pervasive vimentin (VIM) staining (Supporting Information Fig. S1A). Concurrently, the majority of cells expressed Thy1.2 and PDGFR $\alpha$  cell surface markers which are characteristically associated with fibroblasts and subpopulations of CP (Supporting Information Fig. S1B) [11, 33]. However, isolated cells also displayed heterogeneous expression of alpha-SM actin ( $\alpha$ -SMA), suggesting the presence of a mixed cell population of both fibroblasts and myofibroblasts. Nonetheless, when these cells are subjected to reprogramming conditions (5% O<sub>2</sub>, 2  $\mu\text{M}$  SB431542/Alk5i), morphological examination revealed the emergence of several highly proliferative, colony-like structures (Fig. 1B). Immunostaining of d14 colonies showed that they were positive for *Nkx2-5* and *Isl-1* (Fig. 1B, 1C). Although hypoxic conditions alone (i.e., in the DMSO control) remained largely monolayer and generated far fewer colonies compared with Alk5i (Supporting Information Fig. S1C), when cultured up to and beyond 3 weeks under the same conditions, we observed spontaneous differentiation of some colonies into EC and CM lineages as evidenced by clear morphological changes and positive CD31 or  $\alpha$ -actinin staining (Fig. 1B, 1D; Supporting Information S1D). The ability of these colonies to undergo further differentiation suggests the presence of true CP populations. When d21 colonies were subsequently dissociated and replated, cells adopted characteristic CM features such as  $\alpha$ -actinin<sup>+</sup> staining and formation of striated myofibrils (Fig. 1B, insert). Further depletive passaging successively enriched and promoted the expansion of a second presumptive progenitor population and loss of terminally differentiated cells from the culture. When seeded at low density, these cells expanded and reformed colonies, which when further passaged, resulted in largely homogenous monolayers. These cells could be passaged up to and beyond p24 (equivalent to 30 days), with no change in proliferative ability and growth kinetics, while maintaining homogenous expression of *Nkx2-5* and *Tbx5*, along with *Ir4* and *Gata4* that was not restricted to any specific subpopulation (Fig. 1C). Gene expression analysis (GEA) across the reprogramming time course confirmed the sustained upregulation of CP markers when compared with CF, further indicating the formation and expansion of progenitors (Fig. 1D).

Although an expandable progenitor population was obtained, it was unclear which subpopulation they originated from, be it from truly reprogrammed fibroblasts/myofibroblasts or simply expansion of pre-existing CPs, which although scarce, may exist in coculture with fibroblast cultures. Given that PDGFR $\alpha$  is highly expressed in CFs, we performed lineage tracing using *Pdgfra-CreER-ROSA26R*<sup>CAG-LSL-EGFP</sup> mouse line (Supporting Information Fig. S1E). Immunostaining of the heart sections confirmed PDGFR $\alpha$  expression exclusive of SM-myosin heavy chain (SM-MHC), indicating that PDGFR $\alpha$  can be used to mark CF populations, permitting their isolation without nascent SM contamination (Supporting Information Fig. S1F). Quantification of PDGFR $\alpha$ -GFP<sup>+</sup> cells by flow cytometry also revealed a



**Figure 1.** Single factor reprogramming induces formation of CP and ciSMP from CF. **(A):** Schematic depicting reprogramming protocol and markers associated with each stage. **(B):** Phase contrast of d0 CF and d14 ciSMP colonies and subsequent immunostain for  $Nkx2.5$  and  $Isl-1$ . Phase contrast of endothelial tubules emerging from a differentiated colony at d21 confirmed by  $CD31$  staining. Cells from passaged d21 differentiated colonies were stained with  $\alpha$ -actinin, confirming the presence of cardiomyocyte. Inserts indicate magnified region showing striated myofibrils. **(C):** Phase contrast of enriched ciSMP and subsequent immunostain for indicated CP markers demonstrating homogenous coexpression. Cells are counterstained with DAPI (blue channel). **(D):** Timecourse GEA of CP markers across the reprogramming process. Dotted line indicates d0, whereby relative gene expression (RGE) = 1. Statistical significance is with respect to d0. **(E):** Gene expression analysis of CP markers relative to CF in ciSMP. Error bars indicate SD. \*, \*\*, and \*\*\* indicate  $p < .05$ ,  $p < .01$ , and  $p < .001$ , respectively, as calculated by Student's  $t$  test, where  $n = 3$ . **(F):** Fluorescence-activated cell sorting staining for CP surface (Figure legend continues on next page.)

near-identical distribution of PDGFR $\alpha$ <sup>+</sup> cells as the wild type that also do not express SM-MHC (Supporting Information Fig. S1B vs. S1G). Treatment of PDGFR $\alpha$ -GFP<sup>+</sup> cells with SB431542 generated Nkx2-5<sup>+</sup> colonies, which are also GFP<sup>+</sup>, confirming that the likely origin of Nkx2-5<sup>+</sup> putative progenitors is a PDGFR $\alpha$ <sup>+</sup>/SM-MHC<sup>-</sup> CF population (Supporting Information Fig. S1H).

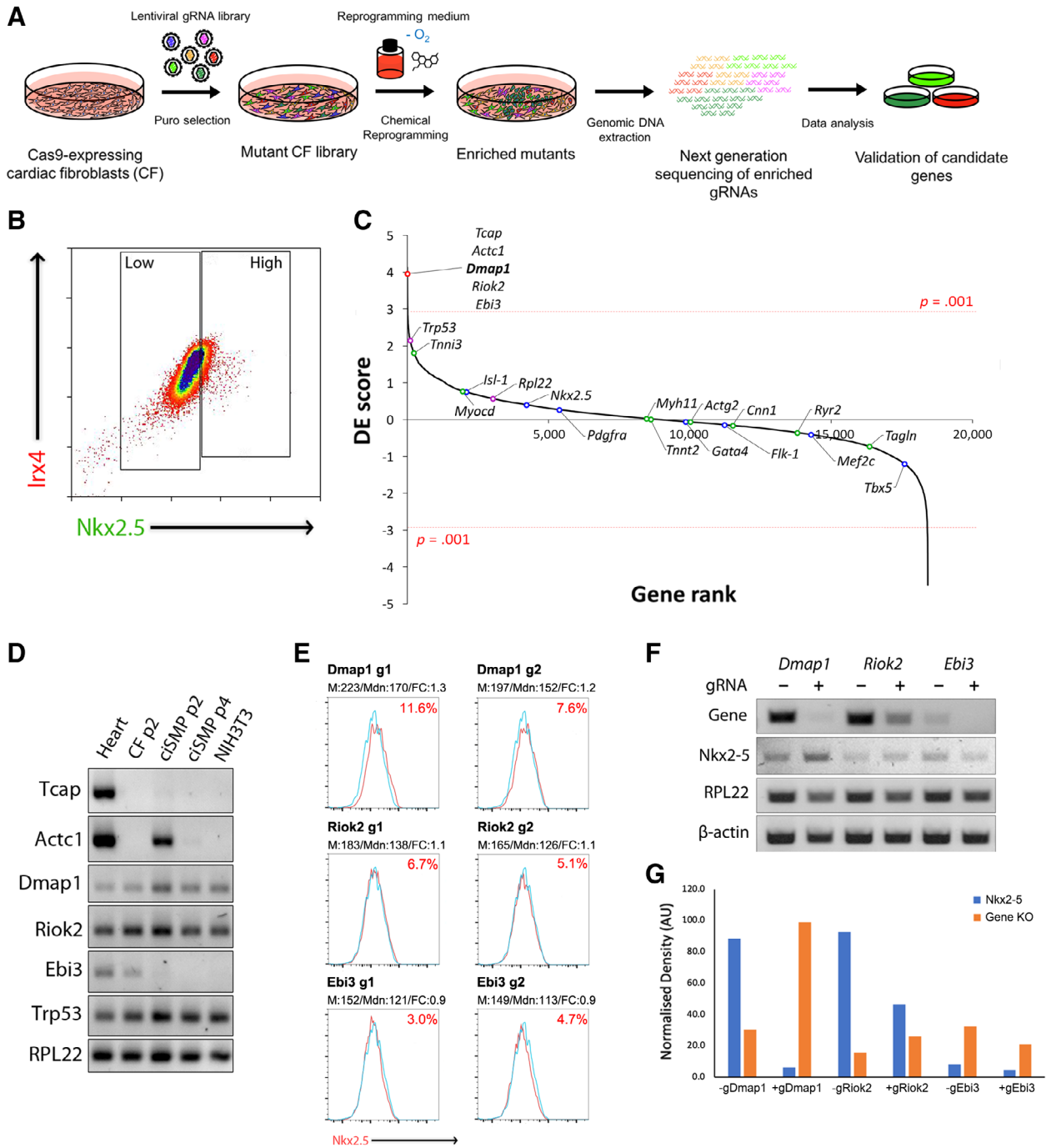
We next assessed the progenitor properties and differentiation potency of this second presumptive progenitor population in generating more mature cell types. GEA using a more comprehensive set of CP markers between these cells and the original fibroblasts revealed significant increases in the expression of key transcription factors and cell surface receptors with the exception of Flk1 and Mef2c (Fig. 1E). Analysis of cell surface markers by flow cytometry confirmed the increased expression of PDGFR $\alpha$ , CD105, CD44, CD29, and notably, Sca1 although increase in Flk1 protein expression was not detected (Fig. 1F). Consistent with the previous reports on CP marker expression, our cells did not express c-Kit [17, 18]. These results suggest that the progenitor cells we obtained are equivalent to MSCs or cardiac colony-forming unit fibroblasts (cCFU-F), [34]. To further explore the differentiation potential of these progenitors, we induced differentiation by culturing the cells in low serum media supplemented with 5 ng/ml TGF- $\beta$  for 7 days. Morphological changes and positive staining for  $\alpha$ -SMA and calponin (Cnn1) revealed a propensity for the progenitors to undergo both myofibroblast and SM differentiation (Fig. 1G). Myofibroblasts possess features of both CF and SM, indicating that despite homogenous CP marker expression, there is heterogeneity in response to TGF- $\beta$  signaling within the population. Reassuringly, sorted Pdgfr $\alpha$ -GFP<sup>+</sup> fibroblasts that do not originally express SM-MHC could give rise to SM-MHC<sup>+</sup> SM cells following reprogramming (Supporting Information Fig. S1I, S1J). Quantification of the number of colonies obtained from Alk5i reprogrammed cells further demonstrated a statistically significant increase compared with DMSO control (~12 fold; Supporting Information Fig. S1K). Surprisingly, when the reprogramming was repeated with fibroblasts isolated from a ROSA26R<sup>NKX2-5-Enhancer-EGFP</sup> reporter mouse that carried a cardiac-specific Nkx2-5 enhancer, no GFP expression was detected, suggesting that the upregulation of Nkx2-5 expression in this putative progenitor population is independent of CP-specific enhancer activity (Supporting Information Fig. S1L). However, despite clear Nkx2-5 upregulation, these cells were unable to convert into EC or CM, suggesting that this second progenitor population we generated is more restricted in its lineage commitment potential. This was confirmed in additional experiments using Alk5-specific inhibitors RepSox or AZ12799734 [35, 36] (Supporting Information Fig. S2A–S2E). Notably, ciSMPs retain expression of VIM, suggesting maintenance of mesenchymal properties, again indicative of an MSC/cCFU-F identity albeit more lineage-restricted (Supporting Information Fig. S2B). Thus, given the propensity for differentiation of these cells toward the SM lineage, either partially to myofibroblasts or directly to SM, we termed these cells as ciSMPs.

### CRISPR-KO Screen Identifies Dmap1 as a Key Factor Regulating Reprogramming

CRISPR-Cas9 knockout screens are well suited to deciphering the molecular intricacies behind the phenotypic changes associated with reprogramming. Therefore, we optimized and scaled up our reprogramming protocol to conduct a genome-wide screen to identify factors or pathways that regulate this process (Fig. 2A). Following isolation of Cas9-CF from Cas9 mice, we first confirmed that Cas9 activity was preserved by transducing the cells with a lentiviral construct, which encoded for BFP-2A-GFP concurrent with self-targeting GFP-gRNA. Robust Cas9 activity was demonstrated by a complete shift in cell population from BFP<sup>+</sup>/GFP<sup>+</sup> to BFP<sup>+</sup> alone when compared with control (Supporting Information Fig. S3A). Hence, delivery of the fully optimized gRNA library followed by selection permitted the generation of a mutant CF library, which was then subjected to reprogramming. Given that Nkx2-5 upregulation was the most clear and consistent hallmark indicating reprogramming, we defined our phenotypic parameter in sorting reprogrammed (Nkx2-5<sup>HIGH</sup>) and non-reprogrammed (Nkx2-5<sup>LOW</sup>) cells via intracellular staining followed by flow cytometry analysis (Fig. 2B). Additionally, we verified that our antibody was capable of detecting the protein in formaldehyde-fixed NIH3T3 cells overexpressing Nkx2-5 (Supporting Information Fig. S3B). Cells were also stained with Irx4, which is expressed at high levels in both fibroblast and progenitor populations and was used as a costain to mark intact nuclei. Sorted cells were then subjected genomic DNA extraction and then gRNA read-counts were obtained via next-generation sequencing. The data were subsequently processed via MAGeCK, a computational tool that statistically evaluates whether certain guides are significantly enriched or depleted between two populations. Combining the enrichment and depletion *p* values for each gene allowed the computation of the depletion-enrichment (DE) score (Supporting Information Fig. S3C). A positive DE score indicates that loss of that particular gene is advantageous for reprogramming, whereas conversely a negative score identifies genes that are essential for the process (Fig. 2C; Supporting Information Fig. S3C). In assuming that Nkx2-5 expression accurately reflects reprogramming efficacy, guides against known CP, SM, and CM markers were neither significantly enriched nor depleted, implying that although enhanced and sustained CP marker expression is a hallmark of progenitor derivation, loss of their expression does not hinder nor influence progenitor formation. Loss of the classic tumor suppressor gene *Trp53* enhances cell proliferation in CF leading to enrichment of *Trp53*-targeting gRNA, yet had no significant impact on Nkx2-5 expression, and hence reprogramming. Equally, suppression of markers and structural proteins attributed to further differentiated stages does not affect the reprogramming efficiency as indicated by Nkx2-5 expression levels. To assess whether the top five hits were truly relevant to the observed phenotype, we performed semiquantitative GEA to gauge their expression in the heart

(Figure legend continued from previous page.)

markers in ciSMP (red) versus isotype control (blue). (G): Further differentiation to smooth muscle. Scale bars indicate 400  $\mu$ m (Isl-1 immunostain), 200  $\mu$ m (Nkx2-5 immunostain, d10, d14, d21 ciSMP-p8), 100  $\mu$ m (P8+, CD31 immunostain), or 50  $\mu$ m ( $\alpha$ -actinin immunostain). See also Supporting Information Figures S1 and S2. Abbreviations:  $\alpha$ -SMA, alpha-smooth muscle actin; CF, cardiac fibroblast; ciSMP, chemically induced smooth muscle progenitor; Cnn1, calponin/calponin; CP, cardiac progenitor; DAPI, 4',6-diamidino-2-phenylindole; PL, phalloidin; TGF- $\beta$ , transforming growth factor- $\beta$ .



**Figure 2.** Clustered regularly interspaced short palindromic repeats (CRISPR)-knockout screen for factors that enhance reprogramming. **(A):** Schematic outlining screening design and approach. **(B):** Fluorescence-activated cell sorting (FACS) plot indicating markers used to distinguish nonreprogrammed ( $Nkx2.5^{LOW}$ ) and reprogrammed ( $Nkx2.5^{HIGH}$ ) cells with *Irx4* as a costain for intact nuclei. Bulk population was gated as indicated, and genomic DNA was extracted from sorted populations for sequencing. **(C):** Ranking of genes based on depletion/enrichment (DE) score calculated from  $p$  values generated by model-based analysis of genome-wide CRISPR-Cas9-knockout. Top three hits are highlighted in red, CP markers are highlighted in blue, smooth muscle/cardiomyocyte marker highlighted in green, and housekeeping genes in purple.  $p$ -value cutoffs where  $p < .001$  were used to distinguish statistically significant hits, where  $n = 3$ . **(D):** Semiquantitative gene analysis of expression of top hits and housekeeping controls in heart tissue, CF, cardiac progenitor, and NIH3T3 cells. **(E):** FACS staining for *Nkx2.5* in cells with single gRNAs against top hits (red) versus nontargeting control (blue). M and Mdn represent mean and median values, respectively. FC represents fold change calculated using M and Mdn values from the empty control (M: 167, Mdn: 131). **(F):** Semiquantitative gene expression analysis in cells with single gRNAs against *Dmap1*, *Riok2*, and *Ebi3*. "Gene" indicates expression of gene targeted by respective gRNA. **(G):** Corresponding densitometry analysis of data in **(F)** normalized to *RPL22*. See also Supporting Information Figure S3. Abbreviation: CF, cardiac fibroblast; ciSMP, chemically induced smooth muscle progenitor; *Dmap1*, DNA methyltransferase 1-associated protein 1; gRNA, guide RNA.

and across the reprogramming process (Fig. 2D). *Tcap* and *Actc1* expression was primarily restricted to the heart and, by inference, CM alone, suggesting that as structural proteins, they do not play a significant role in the conversion process. Detection of *Actc1* expression during early enrichment was expected given that the colonies can spontaneously give rise to both EC and CM upon prolonged reprogramming (Fig. 1B; Supporting Information Fig. S1C). However, *Dmap1* and *Riok2* were found to have sustained expression before and after the reprogramming process, suggesting that loss of function may have an effect in enhancing *Nkx2-5* expression. To further validate the data from our screen, we performed experiments using two individual gRNAs for each of the top three candidates with the highest positive DE score that did not encode for structural proteins. Genes that when lost lead to an increase in *Nkx2-5*<sup>+</sup> cells of greater than 5% when compared with the empty control was used to demonstrate improved reprogramming efficiency. Out of the top three hits, guides which target *Dmap1* (g2 and g3) consistently enhanced *Nkx2-5* expression by 7.6% and 11% compared with a baseline elevated expression of 5% during routine reprogramming (Fig. 2E). Assessing the effectiveness of the gRNAs used against *Dmap1*, *Riok2*, and *Ebi3* by semiquantitative PCR further confirmed both the effectiveness of *Dmap1* gRNA-mediated gene knockout and effects upon *Nkx2-5* expression (Fig. 2F, 2G), prompting us to further investigate the contribution of *Dmap1* to progenitor properties.

### Loss of *Dmap1* Enhances the Expression of CP Genes in ciSMP

We elected to analyze the effects of *Dmap1* loss in ciSMP given that we could not maintain the potency of the initial progenitors under reprogramming conditions. To rule out the possibility of off-target effects, we first repeated the reprogramming process using three additional guides (g1, g4, and g5) against *Dmap1*. *Dmap1* loss was confirmed both on the mRNA and protein level as indicated for all guides (Fig. 3A, 3C). GEA of CP markers within the first five passages following reprogramming revealed an overall increase in the expression of specific marker genes, most significantly in *Nkx2-5* relative to original CF although other markers appeared more variable (Fig. 3A). Given that multiple gRNAs against *Dmap1* were able to reproduce the same phenotype, we concluded that the observed *Nkx2-5* upregulation was a genuine consequence of *Dmap1* loss and focused on the use of ciSMP derived from CF that were transduced with g4 for subsequent analyses (henceforth g4-ciSMP vs. empty). CRISPR-Cas9 editing of the *Dmap1* locus via g4-gRNA was confirmed via tracking of indels by decompositions sequencing (Supporting Information Fig. S4A) and enhanced *Nkx2-5* expression was again confirmed via intracellular flow cytometry, with 8.5% of the cells being *Nkx2-5*<sup>HIGH</sup> (Fig. 3B). A more robust assessment of CP gene expression across the first three passages in g4-ciSMP revealed a significant increase in all markers again with the exception of *Flk1* and *Mef2c* when compared with empty control (Fig. 3C). Furthermore, these markers are uniformly coexpressed in both control and knockout ciSMP, indicating that the difference observed is not because of the expansion of a subpopulation that highly express *Gata4* or *Tbx5* (Fig. 3D).

In identifying *Nkx2-5* upregulation as the defining and most consistent effect of *Dmap1* loss, we next explored the

mechanism by which this is achieved. *Dmap1* is known to associate with and regulate the activity of DNA methyltransferase-1, which in turn regulates gene expression through promoter methylation. In assessing the methylation status of the *Nkx2-5* promoter in CF, empty and g4-ciSMP, we observed that loss of *Dmap1* significantly decreased *Nkx2-5* promoter methylation (Fig. 3E, 3F). The overall methylation reduced by 50% when compared with empty control and decreased from an average of 4 to 2 CpG methylated residues per sequence. Notably, this decrease appears to be driven by an overall reduction of moderately methylated sequences (33%–66% to 1%–33%) rather than a complete loss in methylation across all CpG residues (Fig. 3F). Loss of *Dmap1* does not reduce the methylation of the deleted in azoospermia-like 1, a prenatal, germ-cell-specific gene whose expression is strongly repressed by promoter methylation in somatic cells (Supporting Information Fig. S4B), suggesting locus-specific promoter methylation changes. Overall, these data suggest that modulation of *Nkx2-5* via promoter methylation is a key mechanism by which ciSMP properties are controlled.

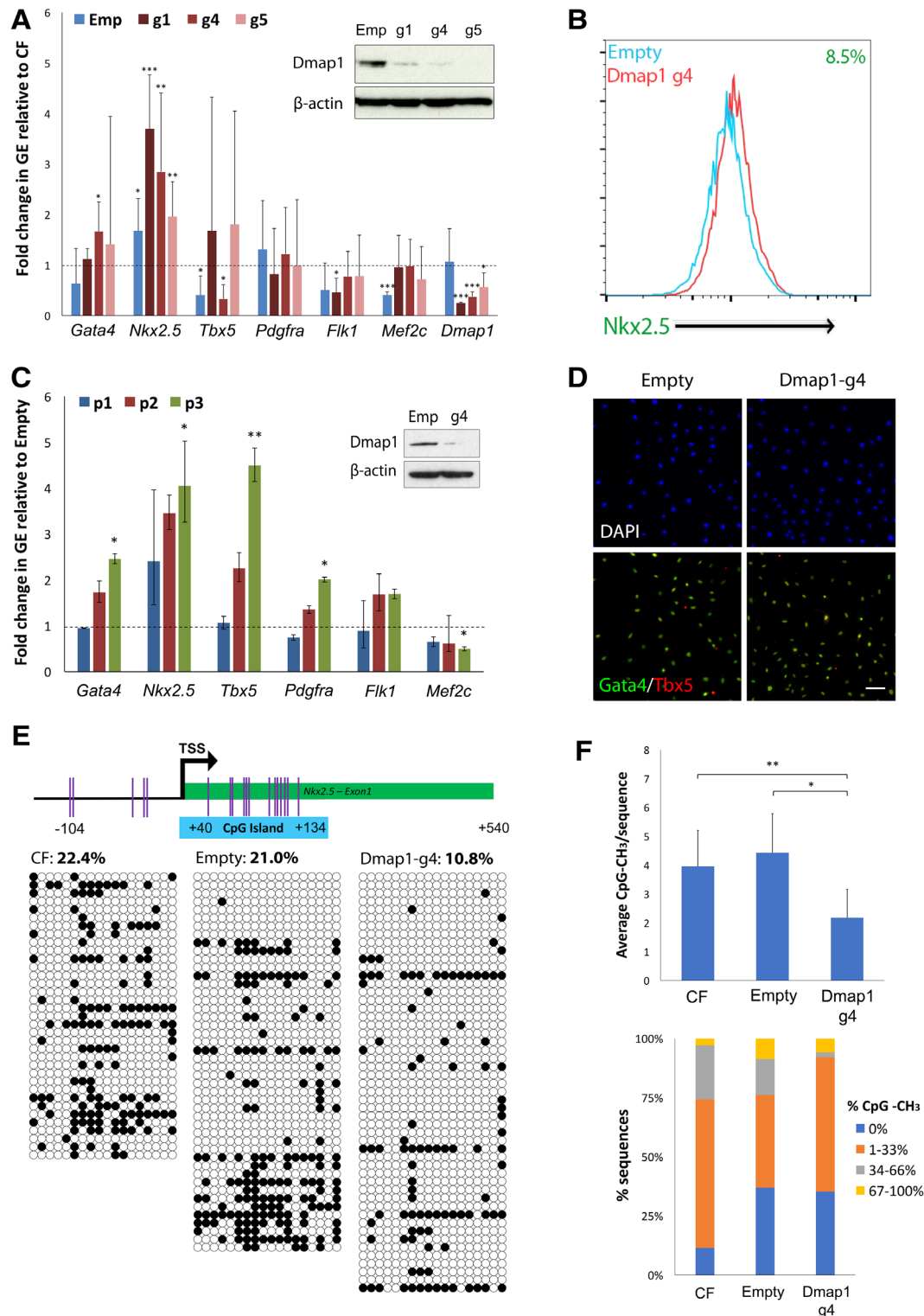
### Loss of *Dmap1* Attenuates Myofibroblast and SM Differentiation

We next explored whether *Dmap1* loss impacts ciSMP differentiation. Although cells expressing control gRNA underwent consistent morphological changes upon induction, g4-ciSMP failed to form the characteristic actin filaments associated with myofibroblast and SM induction (Fig. 4A). Correspondingly, GEA for SM markers revealed a significant decrease in MHC 11 (*Myh11*) and transgelin (*Tagln*) expression when compared with SM derived from empty ciSMP, which was further confirmed by SM-MHC immunoblot (Fig. 4B). Although not significantly reduced on the mRNA level, there was clear reduction in both  $\alpha$ -SMA and *Cnn1* expression at the protein level as evidenced by immunostaining (Fig. 4C). To demonstrate that this defect is because of the absence of *Dmap1*, we introduced cDNA encoding Cas9-resistant *Dmap1* into g4-ciSMP and analyzed whether the defect in SM differentiation could be rescued (Fig. 4D). GEA of ciSMP transduced with *Dmap1* cDNA revealed a significant suppression of CP markers, notably of *Nkx2.5*, although differentiated cells derived from both g4 and g4 + cDNA ciSMP revealed a partial restoration of differentiation efficacy, particularly in *Acta2* and *Tagln* expression (Fig. 4E). Immunostaining of g4 + cDNA-derived SM demonstrated restoration of  $\alpha$ -SMA and *Cnn1* expression, albeit to the lesser extent than empty control (Fig. 4C, 4F).

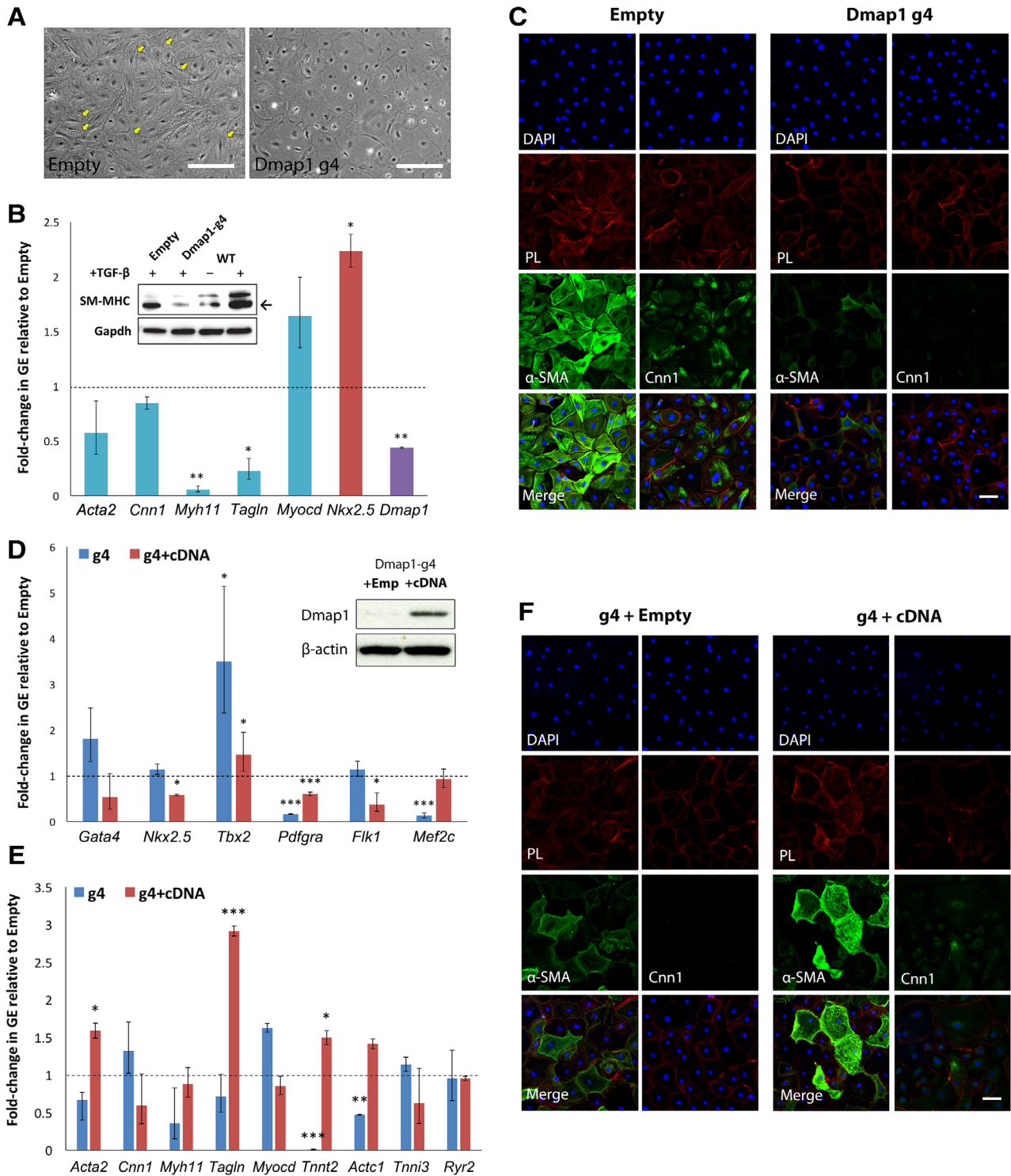
### *Dmap1* Promotes Retention of SM Potency via Suppression of E-Cadherin

During routine propagation of both control and g4-ciSMP, we observed that there were noticeable differences in terms of their cell morphology, with control cells generally adopting a more mesenchymal appearance, opposed to the more epithelial features observed in the knockout cells (Fig. 5A). Given that proper regulation of epithelial-mesenchymal transition (EMT) is required for proepicardial cells to form SM [37, 38], we analyzed E-cadherin (E-cad) and *Snai1* expression and found significant upregulation of E-cad in *Dmap1*-KO cells, which was maintained across passages (Fig. 5B). Restoration of *Dmap1* expression in the knockout line reduced E-cad expression, clearly demonstrating the suppression of E-cad in the

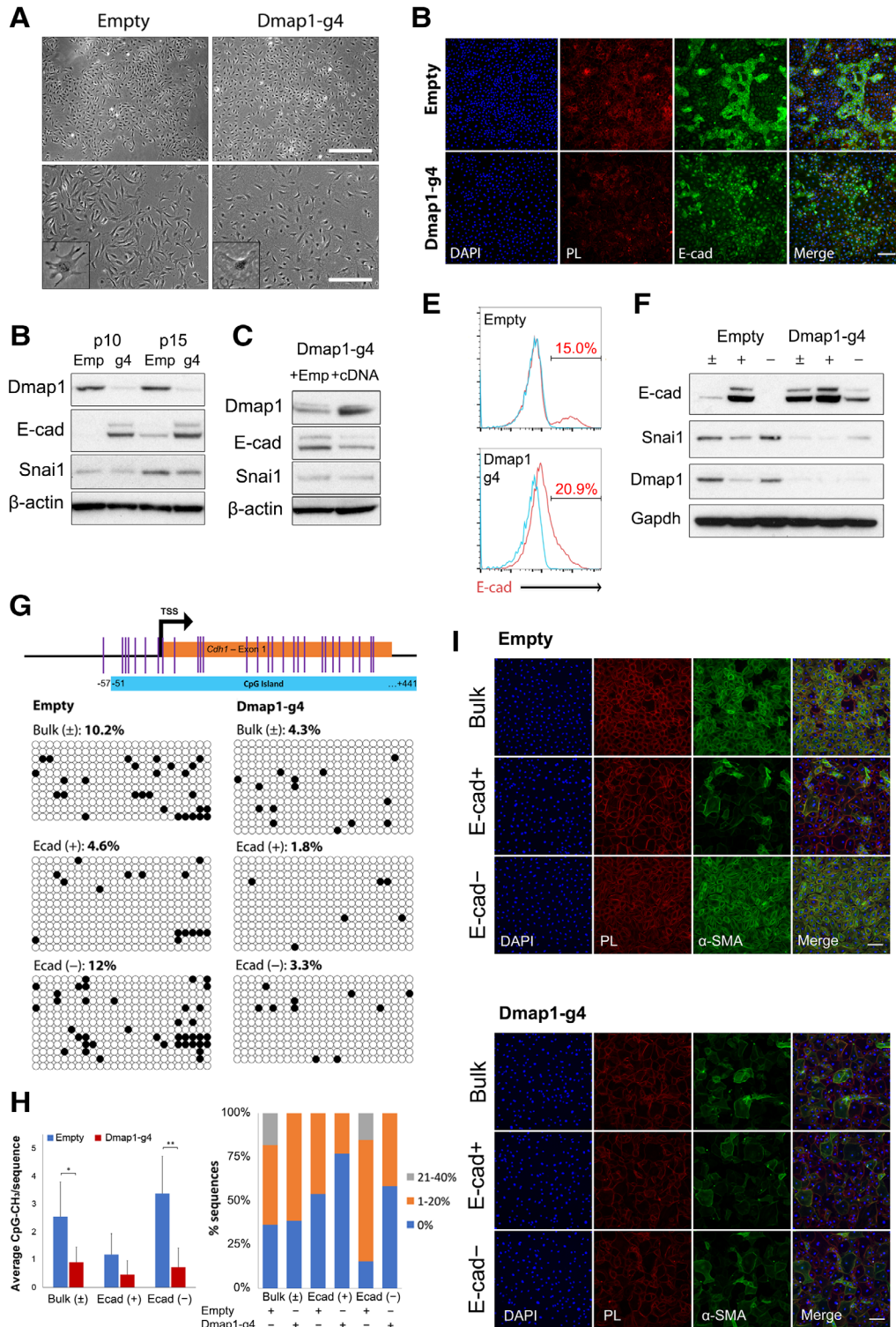




**Figure 3.** Characterization of Dmap1-knockout phenotype in chemically induced smooth muscle progenitors (ciSMPs). **(A):** Immunoblot of ciSMP carrying three different guides against Dmap1 relative to empty control and average gene expression of CP genes in these ciSMP over the first five passages relative to CF. Dotted line indicates relative fold change in expression in CF, where RGE = 1. Error bars indicate SD. **(B):** Fluorescence-activated cell sorting staining for Nkx2.5 in ciSMP carrying g4-guide RNA (red) versus empty control (blue). Percentage shift in Nkx2.5 expression as indicated. **(C):** Gene expression analysis of cardiac progenitor markers in Dmap1-g4 cells relative to empty control across the first three passages. Immunoblot confirms sustained loss of Dmap1 expression in Dmap1-g4 ciSMP. **(D):** Immunostain of cells in **(B)** depicting costaining of Gata4 and Tbx5. Scale bar indicates 100  $\mu$ m. **(E):** Methylation analysis of the *Nkx2.5* promoter region in CF, empty, and Dmap1-g4 ciSMP. **(F):** Summary of data in **(E)** depicting average number of methylated CpG/sequence and frequency of total methylation across all sequences. \* and \*\* indicate  $p < .05$  and  $p < .01$ , respectively, as calculated by Student's *t* test, where  $n = 3$ . See also Supporting Information Figure S4. Abbreviations: CF, cardiac fibroblast; DAPI, 4',6-diamidino-2-phenylindole; Dmap1, DNA methyltransferase 1-associated protein 1; GE, gene expression; TSS, transcription start site.



**Figure 4.** Effect of Dmap1-knockout (KO) on the further differentiation of chemically induced smooth muscle progenitor (ciSMP). **(A):** Phase contrast of control and Dmap1-KO ciSMP differentiated to smooth muscle (SM). Arrows indicate cells that display formation of contractile filaments that are absent in g4-derived SM. **(B):** Gene expression analysis (GEA) of SM markers (blue) in KO-derived SM relative to empty control (dotted line). Error bars indicate SD. Immunoblot confirming induction of SM-MHC in WT cells upon TGF- $\beta$  treatment and loss of SM-MHC expression in absence of Dmap1. **(C):** Immunostain of SM derived from empty and KO-ciSMP for  $\alpha$ -SMA and Cnn1. **(D):** GEA of CP markers KO-ciSMP (g4) and g4-ciSMP transduced with Cas9-resistant Dmap1-cDNA (g4 + cDNA) relative to respective empty controls. Immunoblot confirming restoration of Dmap1 expression. **(E):** GEA of SM and cardiomyocyte markers in g4 and g4 + cDNA cells relative to respective empty controls. **(F):** Immunostain of SM derived from ciSMP outlined in **(D)** for  $\alpha$ -SMA and Cnn1. Scale bars indicate 100  $\mu$ m. \*, \*\*, and \*\*\* represent  $p < .05$ ,  $p < .01$ , and  $p < .001$ , respectively, when compared with relative empty control, where  $n = 3$ . Abbreviations:  $\alpha$ -SMA, alpha-smooth muscle actin; Cnn1, calponin1; DAPI, 4',6-diamidino-2-phenylindole; Dmap1, DNA methyltransferase 1-associated protein 1; GE, gene expression; PL, phalloidin; SM-MHC, smooth muscle-myosin heavy chain; TGF- $\beta$ , transforming growth factor- $\beta$ ; WT, wild type.



**Figure 5.** Dmap1 attenuates smooth muscle (SM) induction via suppression of EMT. **(A)**: Phase contrast of control and Dmap1-knockout (KO) chemically induced smooth muscle progenitor (ciSMP). Inserts detail single cells demonstrating contrasting morphologies. **(B)**: Immunoblot assessing the expression of Dmap1 and EMT modulators E-cad and Snai1. **(C)**: Immunoblot of rescue experiment and impact on EMT-related protein expression **(D)**: Immunostain of ciSMP derived from empty and g4-cardiac fibroblast for E-cad. **(E)**: Flow cytometry of cells stained for E-cad in **(D)**. **(F)**: Immunoblot of cells sorted from **(E)** for Dmap1 and EMT-related proteins. ±, bulk; -, E-cad<sup>-</sup> or E-cad<sup>LOW</sup>; and +, E-cad<sup>+</sup> or E-cad<sup>HIGH</sup> populations in empty and Dmap1-KO. **(G)**: Methylation analysis of E-cad promoter region from cells sorted in **(E)**. **(H)**: Summary of data in **(G)** depicting average number of methylated CpG/sequence and frequency of total methylation across all sequences. \* and \*\* indicate  $p < .05$  and  $p < .01$ , respectively, as calculated by Student's  $t$  test. **(I)**: Immunostain of cells sorted from **(E)** that have been subjected to SM differentiation and stained for  $\alpha$ -SMA. Scale bars indicate 100  $\mu$ m. See also Supporting Information Figure S5. Abbreviations:  $\alpha$ -SMA, alpha-smooth muscle actin; DAPI, 4',6-diamidino-2-phenylindole; Dmap1, DNA methyltransferase 1-associated protein 1; E-cad, E-cadherin; PL, phalloidin; TSS, transcription start site.

presence of *Dmap1*, although this is independent of *Snai1* activity which remained unchanged (Fig. 5C). Equally, further analysis of the signaling dynamics downstream of TGF- $\beta$  signaling strongly correlates decreased expression of E-cad with TGF- $\beta$  activity, particularly evident in control cells (Supporting Information Fig. S5A, S5B). Indeed, although *Dmap1*-KO *g4* cells are still responsive to TGF- $\beta$  signaling, this effect is nonetheless blunted, sustaining high levels of E-cad expression despite the presence of active TGF- $\beta$  signaling (Supporting Information Fig. S5B, S5C). Immunostaining and flow cytometry revealed that specific E-cad<sup>+</sup> populations did exist in the largely E-cad<sup>-</sup> control cells, whereas *Dmap1*-KO cells were all E-cad<sup>+</sup> and demonstrated a broad range of expression (Fig. 5D, 5E). To further investigate the properties of the E-cad<sup>+</sup> subpopulation, we sorted E-cad<sup>+</sup> cells and compared the expression of E-cad, *Snai1*, and *Dmap1* (Fig. 5F). The E-cad<sup>+</sup> fraction from control cells showed decreased expression not only of *Snai1* but also *Dmap1*, suggesting an implicit role for *Dmap1* in repressing E-cad expression. However, cells appear to revert toward bulk distribution levels in terms of E-cad expression following passaging, suggesting the presence of dynamic processes that regulate *Dmap1* expression (Supporting Information Fig. S5D). Notably, in the control population, 43% of the original E-cad<sup>+</sup> cells had lost expression of E-cad, although only 2.5% of the original E-cad<sup>-</sup> population became E-cad<sup>+</sup>, suggesting an inclination toward an E-cad<sup>-</sup> state when *Dmap1* is present. Methylation analysis of the *Cdh1* promoter region showed the overall decrease in methylation in *g4*-ciSMPs as well as a decrease in E-cad<sup>+</sup> cells sorted from empty ciSMP, confirming the correlation of promoter methylation with E-cad expression (Fig. 5G vs. 5F). Sorted cells were subjected to SM differentiation, which further confirmed the role *Dmap1* plays in suppressing mesenchymal properties (Fig. 5I). Control E-cad<sup>-</sup> cells were able to fully differentiate into SM, whereas E-cad<sup>+</sup> progenitors isolated from the same bulk population failed to differentiate, akin to *Dmap1*-KO progenitors. Full suppression of *Cdh1* expression by *Dmap1* appears to be required for commitment to the SM fate, as even E-cad<sup>-</sup> *Dmap1*-KO cells that have a relatively low level of E-cad expression could not form SM. Together, these data suggest a critical role for *Dmap1* not only in the preservation of ciSMP properties via *Nkx2-5* but also in regulating the latter commitment of progenitors into SM.

## DISCUSSION

### Chemical Reprogramming Induction of Progenitors

The defining properties of progenitors that ensure self-renewal while maintaining a differentiation permissive state also define their prospects for therapeutic use. However, in terms of cardiac regeneration, this approach has been hampered by a lack of consensus as to what constitutes a true CP and whether such progenitors can be generated without transgene-dependent induction of the cardiac transcriptional program. Both direct and indirect chemical reprogramming approaches have clearly demonstrated that it is entirely possible to induce reprogramming in the absence of transgenes, and as we have shown, it is also capable of generating progenitor populations. Early on in the reprogramming process, these cells display potency in generating EC and CM, although the functionality of these cells requires further investigation. However, sustained culture under

reprogramming conditions compromise the potency of these cells as certain markers such as *Flk1* and *Mef2c* become down-regulated, thus explaining the inability of this second population of progenitors to generate CM or EC despite retaining the capacity for SM differentiation. The spontaneous nature of differentiation late in the reprogramming process suggests that culture conditions will need to be further optimized in order to preserve both progenitor potency and self-renewal.

### ciSMP Identity in Relation to MSC and cCFU-F

We have found that ciSMP share many similar features to cCFU-F, such as maintenance of *VIM*, *CD44* expression, and mesenchymal morphology, albeit with a more restricted repertoire for further differentiation. cCFU-Fs are of proepicardial origin and demonstrate a broad spectrum of germ layer potency, including those beyond the cardiac lineage [34]. Although our protocol may have the potential of facilitating direct expansion of pre-existing cCFU-F in the primary culture, this appears highly unlikely, given that cCFU-Fs are exceptionally rare (<0.1% of *Sca1*<sup>+</sup>/*PDGFR $\alpha$* <sup>+</sup> population) and more importantly, that TGF- $\beta$  signaling rather promotes cCFU-F colony formation and self-renewal while maintaining lineage potency [39]. Our reprogramming conditions are heavily dependent upon TGF- $\beta$  suppression. Thus, given the different responses to TGF- $\beta$  signaling and capacity for differentiation, cCFU-F and ciSMP cannot be regarded as equivalent, despite sharing key molecular features. Although ciSMPs are more lineage-restricted, they retain some degree of plasticity, given that cells sorted for either positive or negative E-cad expression demonstrate a tendency for reversion back to bulk population distribution after passaging. It remains unclear how *Dmap1* expression is dynamically regulated; however, there is a clear inverse correlation between *Dmap1* and E-cad expression, further suggesting that promoter methylation is also a dynamic process, at least with regard to *Cdh1*.

### Promoter Methylation and Regulation of Gene Expression

We have consistently observed that even seemingly subtle changes in promoter methylation appear to have significant effects on gene expression and hence resultant phenotype. In the case of *Dmap1*, a 50% reduction in this methylation resulted in a two- to fourfold increase in the expression of *Nkx2-5*. Equally, a 75% reduction in *Cdh1* methylation was observed in the E-cad<sup>-</sup> population between empty and *Dmap1* knockout cells, strongly implicating *Dmap1* activity in the regulation of *Cdh1* promoter methylation. In both cases, this results in a strong phenotype, namely the inability to differentiate toward the SM lineage in the absence of *Dmap1* and vice versa in the case of E-cad<sup>-</sup> ciSMP and *Cdh1* expression. Similarly, subtle changes linked to strong phenotypes have also been observed in transcription-factor-based approaches, whereby CM-specific genes such as *Myh6* and *Nppa* remain at least 50% methylated even after 3 days of reprogramming to CM [40]. Comparison between empty and transduced cells also revealed that despite an overall promoter methylation change of only 5% to 10%, specific CpG islands demonstrate up to 40% demethylation when compared with control, suggesting that changes at specific islands can have a disproportionate and perhaps cumulative influence on the gene expression [40]. Furthermore, it has been demonstrated that there is a strong correlation among CpG

island methylation, distance from the TSS, and gene expression, and therefore, analysis of these regions is most likely to reveal the methylation associated changes in the gene of interest [41]. We have observed that this is indeed the case for *Nkx2-5* and *Cdh1*, which correspondingly have a clearly defined CpG island flanking the TSS. It is however important to note that promoter methylation is only one of many factors influencing gene expression during reprogramming and that complete resolution of epigenetic suppression mechanisms is required to fully unlock progenitor potency.

### TGF- $\beta$ Signaling and Reprogramming

The basis of the chemical reprogramming approach is that small molecules can act to alter the signaling and epigenetic environment that facilitates the upregulation of lineage-specific genes that establish a new cell identity. TGF- $\beta$  signaling has been extensively studied both in the cancer and developmental context, playing key roles in the control of tumor metastasis, cell differentiation, and epithelial-mesenchymal interconversion [42]. Suppression of this pathway sustains the mesenchymal properties of both fibroblasts and ciSMP as reflected by retention of fibroblast properties (*CD44*<sup>+</sup>, *VIM*<sup>+</sup>) concurrent with increased *Nkx2-5* expression. However, the effectiveness of this process is dependent on the activity of *Dmap1*, as *Dmap1* acts to promote this process via the downregulation of E-cad expression. Concurrently, absence of *Dmap1* antagonizes ciSMP mesenchymal properties because of the aberrant E-cad expression, detrimentally inhibiting further differentiation into SM. Although the *Cdh1* promoter is not heavily methylated under ciSMP culture conditions, *Dmap1* is nonetheless required for full and sustained suppression of E-cad before SM induction. Consequently, although *Dmap1*-KO cells do demonstrate features that imply improved progenitor properties akin to embryonic equivalents (i.e., increased *Nkx2-5*), this might actually represent ciSMPs that are trapped in a nondifferentiation permissive, yet self-renewing state. Indeed, a similar population of ciSMP can be found in cells where *Dmap1* expression is low, indicating the necessity of *Dmap1*-mediated suppression of E-cad before SM induction. This reflects the limitations of our screening approach, as although factors can be uncovered that enhance progenitor properties in terms of CP marker expression, the same factors could be required for access to further differentiation and is indistinguishable by a single selection criterion. Additionally, it is well established that induction of TGF- $\beta$  enhances myofibroblast differentiation and deposition of extracellular matrix that ultimately leads to fibrotic scar deposition in vivo [43]. Therefore, suppression of TGF- $\beta$  signaling may act to preferentially stimulate fibroblast transdifferentiation into progenitor cells that can then terminally differentiate to restore the normal tissue architecture. In most cell and tissue culture studies, atmospheric oxygen concentration (21%) has been used. Although this is usually termed “normoxic,” it is in actuality hyperoxic as the oxygen concentration is much lower in situ in most tissues. For example, in the well-perfused normal heart, the oxygen concentration ranges from 4% to 14% and is lower in the ischemic and border areas of the diseased heart [44, 45]. We observe that normoxic conditions are detrimental to the reprogramming process, suggesting that hypoxic conditions that mimic physiological levels may also act to stimulate and stabilize the

formation of CP when TGF- $\beta$  signaling is suppressed. This certainly appears to be the case for ciSMP expansion, which additionally possess many markers of MSC that are known to demonstrate improved proliferation and self-renewal properties under hypoxia.

### *Dmap1* and Preservation of Mesenchymal Potency

*Dmap1* was originally identified as a cofactor that regulates *Dnmt-1*-mediated DNA methylation and has been documented to have distinctive roles in reshaping the epigenetic environment during development [46], whereas *Dnmt-1* itself has been found to be essential in preserving progenitor function, notably in somatic tissues [47]. Correspondingly, we have shown that *Dmap1* acts directly to repress E-cad expression, which is fundamental in preserving mesenchymal potency and access to latter SM fates. This is independent of classical EMT suppression via *Snai1/2*, as altering *Dmap1* expression does not induce significant changes in *Snai1* expression. However, there is clear correlation in that low levels or loss of *Dmap1* expression is typically concurrent with reduced *Snai1* expression. This suggests that *Dmap1* is a key component in the regulative pathways that suppress epithelial properties in conjunction with *Snai1*. In addition to *Dnmt-1* regulation, *Dmap1* is also an integral part of the NuA4 histone acetyltransferase complex [48, 49] and may predictably have other repressive functions beyond promoter methylation, although in this context, suppression of E-cad alone is sufficient in preventing loss of mesenchymal properties. Indeed, we have shown that specific and subtle changes to promoter methylation can have a significant impact on progenitor state maintenance and differentiation. Given the importance of *Dmap1* in inhibiting aberrant gene expression and tumorigenesis, induction of progenitor reprogramming via chemically induced epigenetic modification warrants further investigation.

### SUMMARY

This study validates the use of a chemical reprogramming approach in generating CP populations of varying potency. Although initial progenitor populations are capable of differentiation toward CM and EC lineages, this is rapidly lost upon extended culture under reprogramming conditions, resulting in an expandable progenitor population that can only give rise to myofibroblast and SM lineages, termed ciSMP. Utilizing CRISPR-KO screening, we uncovered a role for *Dmap1* in mediating both progenitor induction and differentiation of ciSMP via regulation of promoter methylation of *Nkx2-5* and *Cdh1*, respectively. In order to realize the use of this approach in therapeutic reprogramming, further studies will be required to uncover the correct conditions needed to retain maximal progenitor potency while retaining self-renewal. We have demonstrated that promoter methylation is critical for this process, and predictively, envision that it plays a broader role in sustaining progenitor potency.

### ACKNOWLEDGMENTS

We thank Prof. Pentao Liu, Prof. Sarah Teichmann, and Dr. George S. Vassiliou for their discussions and Dr. Goncalo Castelo-Branco

for providing us with Pdgfra-CreER-ROSA26R<sup>CAG-LSL-EGFP</sup> mice. We also thank Bee Ling Ng, Jennifer Graham, Christopher Hall, and Sam Thompson for FACS and the Sanger Institute DNA pipeline for Illumina sequencing. This work was supported by AstraZeneca-Sanger Institute collaboration grant, Wellcome Trust (WT206194) and the Karolinska Institute (KI/AZ ICMC source grant). J.S.L.Y. is currently affiliated with the Francis Crick Institute, London, United Kingdom; K.Y. is currently affiliated with the Institute for Frontier Life and Medical Sciences, Kyoto University, Kyoto, Japan.

#### AUTHOR CONTRIBUTIONS

J.S.L.Y.: conception/design, collection and assembly of data, data analysis and interpretation, manuscript writing, final approval of manuscript; G.P.: conception/design, collection of data, data analysis and interpretation; C.L.: conception/design, data analysis and interpretation; A.M.: collection of data, data analysis and interpretation; L.D.: provision of study material or patients, data analysis and interpretation; A.T.P.: administrative support, provision

of study material or patients; M.B.-Y., B.S.R.: administrative support, data analysis and interpretation; E.M.H.: conception/design, assembly of data, financial support, data analysis and interpretation, final approval of manuscript; Q.-D.W., K.Y.: conception/design, financial support, data analysis and interpretation, manuscript writing, final approval of manuscript.

#### DISCLOSURE OF POTENTIAL CONFLICTS OF INTEREST

C.L., L.D., A.T.P., M.B.-Y., B.S.R., Q.-D.W. are former or current employees of AstraZeneca. A.T.P. is now currently employed at Sanofi. E.M.H. declared research funding from Karolinska Institutet/AstraZeneca Integrated CardioMetabolic Centre. The other authors indicated no potential conflicts of interest.

#### DATA AVAILABILITY STATEMENT

The data that support the findings of this study are available from the corresponding author upon reasonable request.

#### REFERENCES

- Roth GA, Johnson C, Abajobir A et al. Global, regional, and national burden of cardiovascular diseases for 10 causes, 1990 to 2015. *J Am Coll Cardiol* 2017;70:1–25.
- Bergmann O, Bhardwaj RD, Bernard S et al. Evidence for cardiomyocyte renewal in humans. *Science* 2009;324:98–102.
- Porrello ER, Mahmoud AI, Simpson E et al. Transient regenerative potential of the neonatal mouse heart. *Science* 2011;331:1078–1080.
- Senyo SE, Steinhilber ML, Pizzimenti CL et al. Mammalian heart renewal by pre-existing cardiomyocytes. *Nature* 2012;493:433–436.
- Chong JH, Yang X, Don CW et al. Human embryonic-stem-cell-derived cardiomyocytes regenerate non-human primate hearts. *Nature* 2014;510:273–277.
- Shiba Y, Gomibuchi T, Seto T et al. Allogeneic transplantation of iPS cell-derived cardiomyocytes regenerates primate hearts. *Nature* 2016;538:388–391.
- Beltrami AP, Barlucchi L, Torella D et al. Adult cardiac stem cells are multipotent and support myocardial regeneration. *Cell* 2003;114:763–776.
- Hsieh PCH, Segers VFM, Davis ME et al. Evidence from a genetic fate-mapping study that stem cells refresh adult mammalian cardiomyocytes after injury. *Nat Med* 2007;13:970–974.
- Bolli R, Chugh AR, D'Amario D et al. Cardiac stem cells in patients with ischaemic cardiomyopathy (SCIPIO): Initial results of a randomized phase 1 trial. *Lancet* 2011;378:1847–1857.
- Makkar RR, Smith RR, Cheng K et al. Intracoronary cardiosphere-derived cells for heart regeneration after myocardial infarction (CADUCEUS): A prospective, randomised phase 1 trial. *Lancet* 2012;379:895–904.
- Nosedá M, Harada M, McSweeney S et al. PDGFR $\alpha$  demarcates the cardiogenic clonogenic Sca1+ stem/progenitor cell in adult murine myocardium. *Nat Commun* 2015;6:6930.
- Le T, Chong J. Cardiac progenitor cells for heart repair. *Cell Death Dis* 2016;2:16052.
- He L, Li Y, Li Y et al. Enhancing the precision of genetic lineage tracing using dual recombinases. *Nat Med* 2017;23:1488–1498.
- van Berlo JH, Kanisicak O, Maillet M et al. c-kit+ cells minimally contribute cardiomyocytes to the heart. *Nature* 2014;509:337–341.
- Sharma S, Mishra R, Bigham GE et al. A deep proteome analysis identifies the complete secretome as the functional unit of human cardiac progenitor cells novelty and significance. *Circ Res* 2016;120:816–834.
- Wu SM, Fujiwara Y, Cibulsky SM et al. Developmental origin of a bipotential myocardial and smooth muscle cell precursor in the mammalian heart. *Cell* 2006;127:1137–1150.
- Lalit PA, Salick MR, Nelson DO et al. Lineage reprogramming of fibroblasts into proliferative induced cardiac progenitor cells by defined factors. *Cell Stem Cell* 2016;18:354–367.
- Zhang Y, Cao N, Huang Y et al. Expandable cardiovascular progenitor cells reprogrammed from fibroblasts. *Cell Stem Cell* 2016;18:368–381.
- Cao N, Huang Y, Zheng J et al. Conversion of human fibroblasts into functional cardiomyocytes by small molecules. *Science* 2016;352:1216–1220.
- Hou P, Li Y, Zhang X et al. Pluripotent stem cells induced from mouse somatic cells by small-molecule compounds. *Science* 2013;341:651–654.
- Li X, Zuo X, Jing J et al. Small-molecule-driven direct reprogramming of mouse fibroblasts into functional neurons. *Cell Stem Cell* 2015;17:195–203.
- Zhang L, Yin J-C, Yeh H et al. Small molecules efficiently reprogram human astroglial cells into functional neurons. *Cell Stem Cell* 2015;17:735–747.
- Qian L, Huang Y, Spencer CI et al. In vivo reprogramming of murine cardiac fibroblasts into induced cardiomyocytes. *Nature* 2012;485:593–598.
- Ifkovits JL, Addis RC, Epstein JA et al. Inhibition of TGF $\beta$  signaling increases direct conversion of fibroblasts to induced cardiomyocytes. *PLoS ONE* 2014;9:e89678.
- Zhao Y, Londono P, Cao Y et al. High-efficiency reprogramming of fibroblasts into cardiomyocytes requires suppression of profibrotic signalling. *Nat Commun* 2015;6:8243.
- Dobaczewski M, Chen W, Frangogiannis NG. Transforming growth factor (TGF)- $\beta$  signaling in cardiac remodeling. *J Mol Cell Cardiol* 2011;51:600–606.
- Nakada Y, Canseco DC, Thet S et al. Hypoxia induces heart regeneration in adult mice. *Nature* 2017;541:222–227.
- Tzelepis K, Koike-Yusa H, De Braekeleer E et al. A CRISPR dropout screen identifies genetic vulnerabilities and therapeutic targets in acute myeloid leukemia. *Cell Rep* 2016;17:1193–1205.
- Van Pham P, Vu NB, Nguyen HT et al. Significant improvement of direct reprogramming efficacy of fibroblasts into progenitor endothelial cells by ETV2 and hypoxia. *Stem Cell Res Ther* 2016;7:104.
- Månsson-Broberg A, Rodin S, Bulatovic I et al. Wnt/ $\beta$ -catenin stimulation and laminins support cardiovascular cell progenitor expansion from human fetal cardiac mesenchymal stromal cells. *Stem Cell Res* 2016;6:607–617.
- Roediger M, Miosge N, Gersdorff N. Tissue distribution of the laminin  $\beta$ 1 and  $\beta$ 2 chain during embryonic and fetal human development. *J Mol Histol* 2010;41:177–184.
- Tanaka M, Chen Z, Bartunkova S et al. The cardiac homeobox gene *Csx/Nkx2.5* lies genetically upstream of multiple genes

essential for heart development. *Development* 1999;6:1269–1280.

**33** Furtado MB, Costa MW, Pranoto EA et al. Cardiogenic genes expressed in cardiac fibroblasts contribute to heart development and repair novelty and significance. *Circ Res* 2014;114:1422–1434.

**34** Chong JJH, Chandrakanthan V, Xaymardan M et al. Adult cardiac-resident MSC-like stem cells with a proepicardial origin. *Cell Stem Cell* 2011;9:527–540.

**35** Anderton MJ, Mellor HR, Bell A et al. Induction of heart valve lesions by small-molecule ALK5 inhibitors. *Toxicol Pathol* 2011;39:916–924.

**36** Ichida JK, Blanchard J, Lam K et al. A small-molecule inhibitor of Tgf- $\beta$  signaling replaces Sox2 in reprogramming by inducing Nanog. *Cell Stem Cell* 2009;5:491–503.

**37** Landerholm TE, Dong XR, Lu J et al. A role for serum response factor in coronary smooth muscle differentiation from proepicardial cells. *Development* 1999;10:2053–2062.

**38** Lu J, Landerholm TE, Wei JS et al. Coronary smooth muscle differentiation from proepicardial cells requires RhoA-mediated

actin reorganization and p160 Rho-kinase activity. *Dev Biol* 2001;240:404–418.

**39** Cornwell JA, Nordon RE, Harvey RP. Analysis of cardiac stem cell self-renewal dynamics in serum-free medium by single cell lineage tracking. *Stem Cell Res* 2018;28:115–124.

**40** Liu Z, Chen O, Zheng M et al. Repatterning of H3K27me3, H3K4me3 and DNA methylation during fibroblast conversion into induced cardiomyocytes. *Stem Cell Res* 2016;16:507–518.

**41** Wagner JR, Busche S, Ge B et al. The relationship between DNA methylation, genetic and expression inter-individual variation in untransformed human fibroblasts. *Genome Biol* 2014;15:R37.

**42** Massagué J. TGF $\beta$  signalling in context. *Nat Rev Mol Cell Biol* 2012;13:616–630.

**43** Desmoulière A, Geinoz A, Gabbiani F et al. Transforming growth factor-beta 1 induced alpha smooth muscle actin expression in granulation tissue myofibroblasts and in quiescent and growing cultured fibroblasts. *J Cell Biol* 1993;122:103–111.

**44** Ivanovic Z. Hypoxia or in situ normoxia: The stem cell paradigm. *J Cell Physiol* 2009;219:271–275.

**45** Roy S, Khanna S, Wallace WA et al. Characterization of perceived hyperoxia in isolated primary cardiac fibroblasts and in the reoxygenated heart. *J Biol Chem* 2003;278:47129–47135.

**46** Mohan KN, Ding F, Chaillet JR. Distinct roles of DMAP1 in mouse development. *Mol Cell Biol* 2011;31:1861–1869.

**47** Sen GL, Reuter JA, Webster DE et al. DNMT1 maintains progenitor function in self-renewing somatic tissue. *Nature* 2010;463:563–567.

**48** Doyon Y, Selleck W, Lane WS et al. Structural and functional conservation of the NuA4 histone acetyltransferase complex from yeast to humans. *Mol Cell Biol* 2004;24:1884–1896.

**49** Kang BG, Shin JH, Yi JK et al. Corepressor MIMTR/DMAP1 is involved in both histone deacetylase 1- and TFIID-mediated transcriptional repression. *Mol Cell Biol* 2007;27:3578–3588.



See [www.StemCells.com](http://www.StemCells.com) for supporting information available online.