

RESEARCH

Open Access



# A high-flow nasal cannula system with relatively low flow effectively washes out CO<sub>2</sub> from the anatomical dead space in a sophisticated respiratory model made by a 3D printer

Yu Onodera<sup>\*</sup> , Ryo Akimoto, Hiroto Suzuki, Masayuki Okada, Masaki Nakane and Kaneyuki Kawamae

\* Correspondence: [yu1983624@yahoo.co.jp](mailto:yu1983624@yahoo.co.jp)  
Department of Anesthesiology,  
Faculty of Medicine, Yamagata  
University, 2-2-2 Iidanishi, Yamagata  
City, Yamagata Prefecture 990-9585,  
Japan

## Abstract

**Background:** Although clinical studies of the high-flow nasal cannula (HFNC) and its effect on positive end-expiratory pressure (PEEP) have been done, the washout effect has not been well evaluated. Therefore, we made an experimental respiratory model to evaluate the respiratory physiological effect of HFNC.

**Methods:** An airway model was made by a 3D printer using the craniocervical 3D-CT data of a healthy 32-year-old male. CO<sub>2</sub> was infused into four respiratory lung models (normal-lung, open- and closed-mouth models; restrictive- and obstructive-lung, open-mouth models) to maintain the partial pressure of end-tidal CO<sub>2</sub> (P<sub>ET</sub>CO<sub>2</sub>) at 40 mmHg. HFNC flow was changed from 10 to 60 L/min. Capnograms were recorded at the upper pharynx, oral cavity, subglottic, and inlet sites of each lung model.

**Results:** With the normal-lung, open-mouth model, 10 L/min of HFNC flow decreased the subglottic P<sub>ET</sub>CO<sub>2</sub> to 30 mmHg. Increasing the HFNC flow did not further decrease the subglottic P<sub>ET</sub>CO<sub>2</sub>. With the normal-lung, closed-mouth model, HFNC flow of 40 L/min was required to decrease the P<sub>ET</sub>CO<sub>2</sub> at all sites. Subglottic P<sub>ET</sub>CO<sub>2</sub> reached 30 mmHg with an HFNC flow of 60 L/min. In the obstructive-lung, open-mouth model, P<sub>ET</sub>CO<sub>2</sub> at all sites had the same trend as in the normal-lung, open-mouth model. In the restrictive-lung, open-mouth model, 20 L/min of HFNC flow decreased the subglottic P<sub>ET</sub>CO<sub>2</sub> to 25 mmHg, and it did not decrease further. As HFNC flow was increased, PEEP up to 7 cmH<sub>2</sub>O was gradually generated in the open-mouth models and up to 17 cmH<sub>2</sub>O in the normal-lung, closed-mouth model.

**Conclusions:** The washout effect of the HFNC was effective with relatively low flow in the open-mouth models. The closed-mouth model needed more flow to generate a washout effect. Therefore, HFNC flow should be considered based on the need for the washout effect or PEEP.

**Keywords:** High-flow nasal cannula, Washout effect, Rebreathing, Ventilation, Work of breathing, PEEP

## Background

The recently invented high-flow nasal cannula (HFNC) system, which is used in respiratory therapy, is easier than noninvasive positive-pressure ventilation (NPPV) and is more effective than conventional oxygen therapies [1, 2]. The initial assumptions about HFNC for adults were that it allowed humidification and accurate  $F_{I}O_2$  management; therefore, HFNC's respiratory physiological effects did not become well understood. Those respiratory physiological effects are estimated to include the following: washout of the anatomical dead space of the respiratory tract, a positive end-expiratory pressure (PEEP) effect, and reduction of the metabolic cost of gas conditioning by humidification. The effect of PEEP has been evaluated by measuring airway pressure [3, 4] or by using electrical impedance tomography [5, 6]. The effects of HFNC on ventilation include a reduction of the respiratory rate [1] and minute ventilation [7] plus an improvement in thoraco-abdominal synchrony [8]. However, the mechanism has been surmised either from the study of tracheal gas insufflation (TGI) [9, 10], which is quite a different system from HFNC with "high flow" less than 8 L/min [10], or from a simple respiratory model, which had a larger dead space than the actual value in humans [11].

Thus, there is no sophisticated study that focused on the mechanism of the washout effect and was performed with an HFNC system. In clinical practice, the usage of HFNC relieves dyspnea, but the contributions of the washout effect and PEEP are unknown. Therefore, we conducted this study to evaluate the relationship between HFNC flow, the washout effect, and PEEP.

## Objective

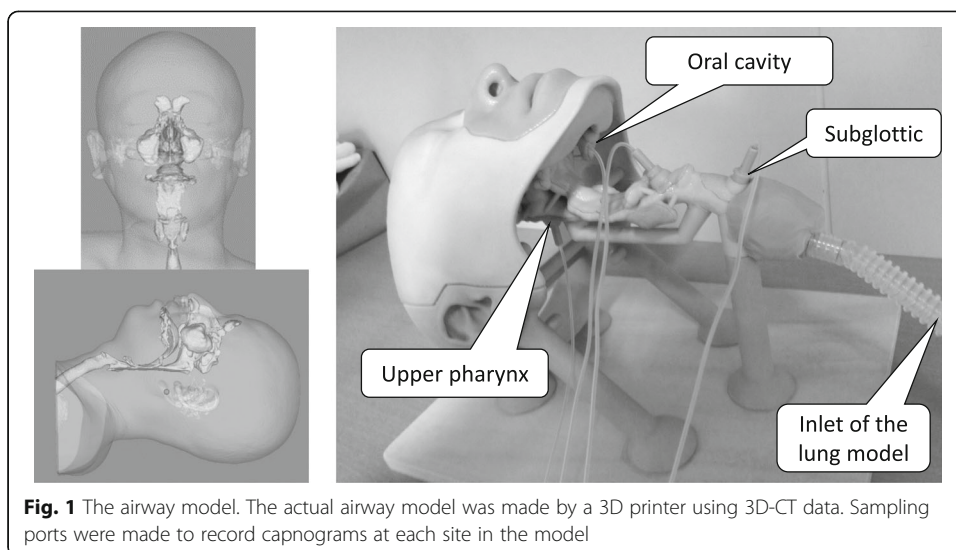
The objective of this study is to evaluate the respiratory physiological effects of HFNC.

## Methods

Optiflow™ (Fisher and Paykel Healthcare, Auckland, NZ) was used as the HFNC system.

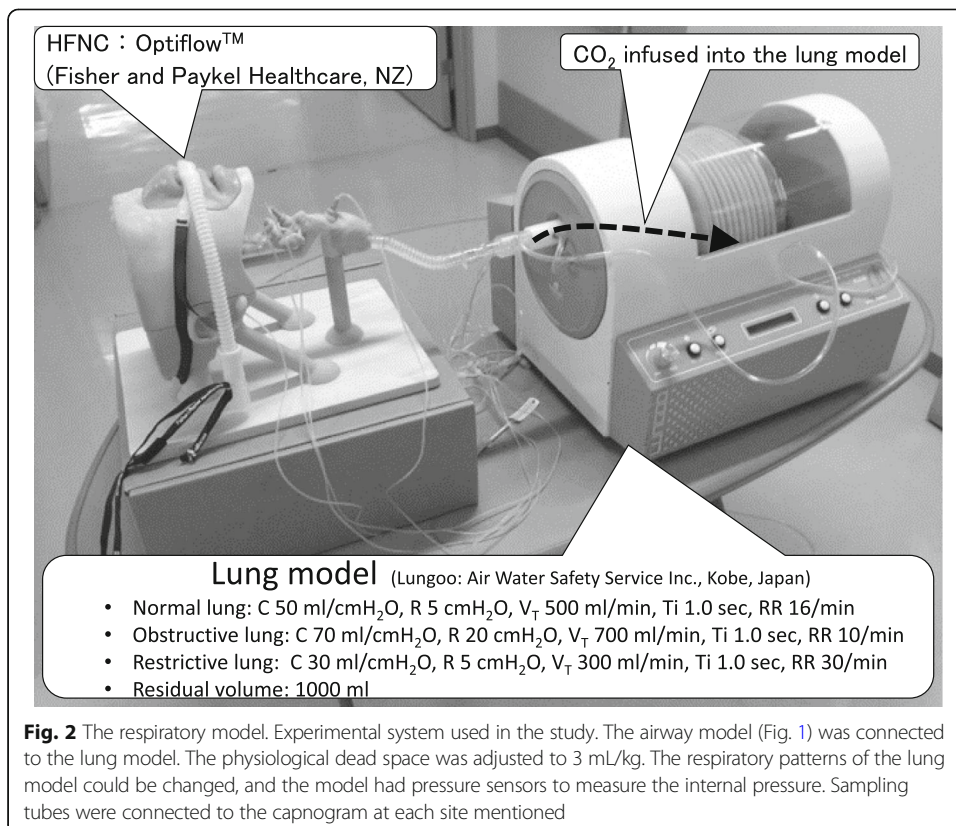
An airway model was made by a 3D printer (ZPrinter® 450: Z Corporation, Rock Hill, South Carolina, USA) using the craniocervical 3D-CT data of a 32-year-old, healthy male (height, 170 cm; weight, 65 kg); the volunteer was equipped with HFNC (flow, 35 L/min and  $F_{I}O_2$ , 0.21), and CT images were obtained during the exhalation phase (Fig. 1). The materials used to make the airway model were mainly calcium sulfate hemihydrate and 2-pyrrolidone, which was solid in the finished product. The anatomical dead space was 2 mL/kg, and the physiological dead space was adjusted to 3 mL/kg. Sampling ports were inserted into the model's upper pharynx, oral cavity, subglottic area, and inlet to measure a capnogram at each site.

Lungoo (Air Water Safety Service Inc., Kobe, Japan) was used as the lung model. Lungoo consists of a bellows, a motor, and a spring. The inspiratory effort was generated by the motor, and passive exhalation was done by the spring. Resistance and compliance were controlled by the motor regulated by the controller. The lung model settings were as follows: normal (compliance [C], 50 mL/cmH<sub>2</sub>O; resistance [R], 5 cmH<sub>2</sub>O/L/s; tidal volume [Vt], 500 mL; and respiratory rate [RR], 16 breaths/min), obstructive (C, 70 mL/cmH<sub>2</sub>O; R, 20 cmH<sub>2</sub>O/L/s; Vt, 700 mL; and RR, 10/min), and



restrictive (C, 30 mL/cmH<sub>2</sub>O; R, 5 cmH<sub>2</sub>O/L/s; V<sub>t</sub>, 300 mL; and RR, 30/min). In all models, the inspiratory time (Ti) was 1.0 s and the residual volume was 1000 mL. CO<sub>2</sub> was infused into the lung model to reach 40 mmHg of partial pressure of end-tidal CO<sub>2</sub> (P<sub>ET</sub>-CO<sub>2</sub>) measured at the upper pharynx in each model without HFNC (Fig. 2).

Two sequences (with an open and closed mouth) were performed in the normal lung model, and one sequence (with an open mouth) was performed in the obstructive and restrictive lung models. The HFNC flow was changed from 10 to 60 L/min, and the



capnograms at each sampling site were measured 3 min after each HFNC flow was changed by using a bedside patient monitor (IntelliVue MP30: Royal Philips, Eindhoven, Netherlands). The generated PEEP and the pressure developed by the respiratory muscles (Pmus) that was needed to maintain the Vt were also recorded from sensors inside the lung model (Fig. 2).

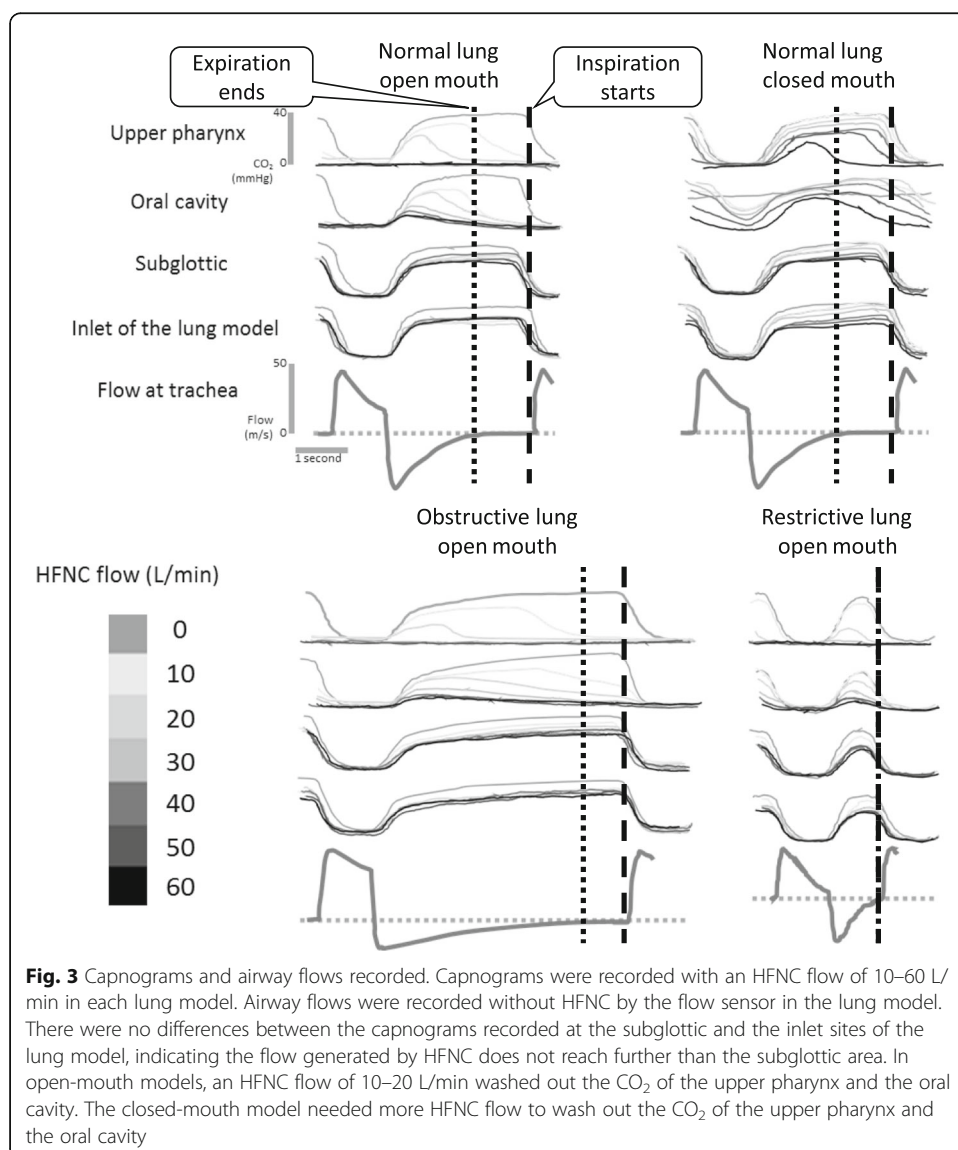
## Results

### Capnograms in each lung model

Capnograms in each lung model and HFNC flow are shown in Fig. 3.

#### Normal-lung, open-mouth model

Capnograms recorded at the subglottic area and the inlet of the lung model had flat phase 3 waveforms, which demonstrated that the gas delivered by HFNC does not reach and wash out the dead space below the subglottic area. With capnograms



**Fig. 3** Capnograms and airway flows recorded. Capnograms were recorded with an HFNC flow of 10–60 L/min in each lung model. Airway flows were recorded without HFNC by the flow sensor in the lung model. There were no differences between the capnograms recorded at the subglottic and the inlet sites of the lung model, indicating the flow generated by HFNC does not reach further than the subglottic area. In open-mouth models, an HFNC flow of 10–20 L/min washed out the CO<sub>2</sub> of the upper pharynx and the oral cavity. The closed-mouth model needed more HFNC flow to wash out the CO<sub>2</sub> of the upper pharynx and the oral cavity

recorded at the upper pharynx and oral cavity,  $PCO_2$  started to decrease before phase 3 ends. An HFNC flow of 10 L/min was able to totally wash out  $CO_2$  by the end of phase 3 at these upper two sampling ports.

Based on these results, an HFNC flow of 10 L/min was able to fully wash out  $CO_2$  from the areas reached by the gas delivered by HFNC before the next inspiration started. Therefore, with the normal-lung, mouth-open condition, an HFNC setting with flow of 10 L/min was adequate to reach the maximum washout effect.

#### ***Normal-lung, closed-mouth model***

Capnograms recorded at the subglottic area and at the inlet of the normal-lung, closed-mouth model had the same pattern as the open-mouth model, which also demonstrated that the gas delivered by HFNC does not reach and wash out the dead space below the subglottic area. Capnograms recorded at the upper pharynx and oral cavity of the normal-lung, closed-mouth model show that  $PCO_2$  starts to decrease before phase 3 ends, which differed from the open-mouth model in which  $PCO_2$  at the end of phase 3 did not reach zero until HFNC flow was raised to 40 L/min at the upper pharynx and 50 L/min in the oral cavity.

These results show that HFNC flow of 10 to 50 L/min was not able to fully wash out the  $CO_2$  in areas reached by the gas delivered by HFNC before the next inspiration started. Therefore, with the normal-lung, closed-mouth model as opposed to the open-mouth model, an HFNC flow of more than 50 L/min was needed to reach a maximum washout effect.

#### ***Obstructive-lung, open-mouth model***

Capnograms recorded with an obstructive-lung, open-mouth model showed the same patterns as the normal-lung, open-mouth model at each sampling site.

#### ***Restrictive-lung, open-mouth model***

The restrictive-lung, open-mouth model had a short phase 3; therefore, this model had less time for  $CO_2$  to be washed out. Contrary to other open-mouth models, this model had  $PCO_2$  remaining at the upper pharynx by the end of phase 3 with an HFNC flow of 10 L/min.

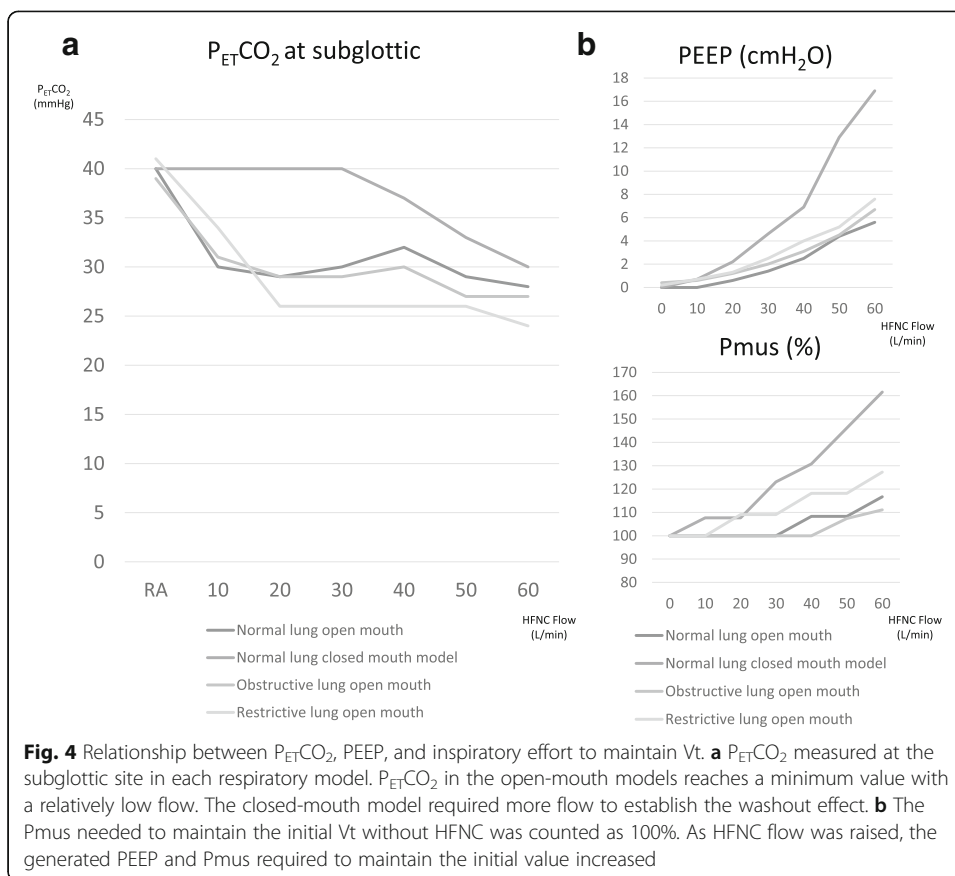
#### **Efficiency of the washout effect**

Estimated from capnograms recorded at the subglottic site and the inlet of the lung model, the flow generated from HFNC did not reach below the subglottic area. Therefore, the efficiency of the washout effect can be estimated from the reduction of  $P_{ET}CO_2$  measured at the subglottic site.

The normal-lung, open-mouth model and the obstructive-lung, open-mouth model showed the same pattern and also had the same trend, reaching 30 mmHg with an HFNC flow of 10 L/min. With the normal-lung, closed-mouth model,  $P_{ET}CO_2$  began to decrease with an HFNC flow of 40 L/min, but 60 L/min of HFNC flow was required to reach a  $P_{ET}CO_2$  of 30 mmHg. With the restrictive-lung, open-mouth model,  $P_{ET}CO_2$  continued to decrease to 26 mmHg with a higher HFNC flow of 20 L/min (Fig. 4a).

#### **PEEP and $P_{mus}$**

As the HFNC flow increased, PEEP up to 7 cmH<sub>2</sub>O was generated with each open-mouth model and up to 17 cmH<sub>2</sub>O with the normal-lung, closed-mouth model. The



$P_{mus}$  that was required to maintain a  $V_t$  of 500 mL with a normal lung, a  $V_t$  of 700 mL with an obstructive lung, and a  $V_t$  of 300 mL with a restrictive lung increased as the HFNC flow was raised. The normal-lung, closed-mouth model required  $P_{mus}$  up to 160% of the initial value, and other models required  $P_{mus}$  up to around 110 to 130% (Fig. 4b).

### Discussion

This is the first study that focused on HFNC's washout effect using a sophisticated respiratory model. In summary, the washout effect does not need a higher flow of HFNC, but PEEP requires a higher flow; however, a higher flow may increase the work of breathing (WOB). Therefore, from our study, we may say that optimal flow for each patient may differ according to the need for ventilation or oxygenation support, which was also purported by a previous clinical study [12].

The improvement of oxygenation by HFNC has been studied clinically by airway pressure and electrical impedance tomography, and all studies concluded that HFNCs are able to generate PEEP [4–6]. Prior studies found that a higher HFNC flow generates a higher PEEP, which is compatible with the results of our study (Fig. 4b) [3, 12]. On the other hand, the effect of the HFNC on ventilation has been detected by some precise clinical studies [7, 12] and a bench study with a simple respiratory model [11]; however, the mechanism has not been well described. Therefore, we now do not know how HFNC contributes to ventilation. Also, a study addressing the failure of HFNC

and increased mortality has been recently published [13]. The reasons that a failure of HFNC increases mortality are still unknown: this may be caused by HFNC giving comfort and relief of dyspnea without improving the lung condition or by masking the signs of deterioration of the lung itself or even the patient's general condition, which may mislead clinical decision-making. A study of the respiratory physiological effect of HFNC needs to be done to determine the indication for and settings of the HFNC.

Our study found that the washout effect of HFNC is effective with a relatively low flow of 10 L/min except in the normal-lung, closed-mouth model and the restrictive-lung, open-mouth model. These results were compatible with the clinical data from a previous publication that stated "most of the reduction in the effort and work of breathing can be obtained at even the lowest flow rate of 30 L/min" [12].

An HFNC flow of 10 L/min delivers 166 mL/s of fresh gas and washes out the anatomical dead space of 130 mL in only 0.78 s. In normal- and obstructive-lung, open-mouth models, there was enough time after exhalation and before the beginning of the next inspiration (Fig. 4) to reach the maximum washout effect with an HFNC flow of 10 L/min. With the restrictive-lung, open-mouth model, inspiration started right after exhalation ended; therefore, HFNC of 10 L/min was not enough, and 20 L/min was required to totally wash out the anatomical dead space and reach the maximum washout effect in this condition. A high respiratory rate and a shorter time after exhalation make the HFNC washout effect less efficient: a higher HFNC flow is required to reach the maximum effect. The normal-lung, closed-mouth model requires more HFNC flow to reduce  $P_{ET}CO_2$  than open-mouth models. This phenomenon was thought to be because delivered gas from the HFNC must enter and exit from only the nostrils with the closed-mouth condition; thus, the closed-mouth condition is much less efficient than the open-mouth condition in which delivered gas enters through the nostrils and exits from the oral cavity. In a past study recording capnograms with TGI, intubated and mechanically ventilated patients showed a decrease of  $PCO_2$  during phase 3, and this reduction was said to be associated with the efficiency of reducing dead space ventilation [9, 14]. In our study, capnograms recorded at the upper pharynx and oral cavity showed the same  $PCO_2$  decrease at phase 3 but not at the trachea, which meant that HFNC-delivered gas was not able to reach down to the trachea. This would be a difference between HFNC and TGI, in which the gas delivered in the trachea causes turbulence for the alveolar dead space effect.

The restrictive-lung model, which had a smaller  $V_t$ , tended to have a greater drop in  $P_{ET}CO_2$  with HFNC than other lung models (Fig. 4a). This was estimated to be due to the inversely proportional ratio of the dead space to the  $V_t$ . Because of this inverse proportion, the ratio of dead space ventilation progressively increases as  $V_t$  decreases; therefore, the magnitude of the washout effect increased, as our study showed.

The PEEP generated by HFNC had a linear correlation with HFNC flow, which was also compatible with previously published studies [3, 6, 12]. The level of generated PEEP differed dramatically between the open-mouth and closed-mouth models, which was opposite of the washout effect. Adding to this PEEP effect, another interesting finding from our study was that the  $P_{mus}$  needed to maintain the  $V_t$  increased as HFNC flow increased. This phenomenon meant that increasing the HFNC flow might increase the work of breathing inversely to the washout effect. Although we were not able to clarify the mechanism of this increase of the WOB from our results, the study

done by Spence et al. showed that there is flow against inspiration even at the peak of inspiration due to turbulence in the nasal cavity [15]. This study did not show the change of inspiratory effort, but this counter flow may be one of the reasons for the increasing inspiratory effort.

### Limitations

One limitation of our study is that our model is not able to combine the effects of HFNC: the washout effect occurs with a relatively low HFNC flow, PEEP is generated as HFNC flow is increased, and the WOB is increased by a higher HFNC flow. All of these respiratory physiological effects demonstrated in our study would be combined in clinical practice. Additionally, the respiratory physiological condition would vary by patient, and each respiratory effect of HFNC would have a different impact. Therefore, ideal HFNC flow may differ by etiology in each patient based on the need for reduction of the WOB or PEEP.

Another limitation of our study is that our model is made from solid materials, and it was not able to replicate the change of resistance caused by airway pressure, as would occur in actual patients. Also, the lung model was not able to replicate the change in airway resistance and compliance caused by generated airway pressure. Although we made our airway model with a CT image scanned at the exhalation phase with an HFNC flow of 35 L/min to replicate an airway expanded by HFNC, the resistance of the airway is thought to be different during inspiration, exhalation, and HFNC flow. Adding to these limitations, anatomical traits vary widely in patients, affecting the impact of each respiratory physiological effect. Although it was done in a pediatric model, a study by Sivieri et al. found that the size of the nares and prong affected the PEEP generated [16]. Our model had the same trend but higher PEEP than other clinical studies done previously [3, 4]. This phenomenon may have been caused by the anatomical traits of our volunteer.

To resolve these limitations, further clinical studies are needed to investigate the different effects of HFNC flow in different patient conditions.

### Conclusions

HFNC's washout effect occurs with a relatively low HFNC flow in contrast to PEEP, and it was also influenced by the exhalation time and  $V_t$ . Raising the HFNC flow might increase the WOB; therefore, a clinical investigation is required to determine how these respiratory physiological effects of HFNC combine in humans.

### Abbreviations

C: Compliance; HFNC: High-flow nasal cannula; NPPV: Noninvasive positive-pressure ventilation; PEEP: Positive end-expiratory pressure;  $P_{Et}CO_2$ : Partial pressure of end-tidal  $CO_2$ ;  $P_{mus}$ : Pressure developed by the respiratory muscles; R: Resistance; RR: Respiratory rate; TGI: Tracheal gas insufflation;  $V_t$ : Tidal volume; WOB: Work of breathing

### Acknowledgements

We thank Akira Takagi, dental technician of the Division of Dentistry and Oral Surgery, Yamagata University School of Medicine, who designed and made the airway model.

### Funding

Nothing to declare.

### Availability of data and materials

Data can be requested from the corresponding author.



**Authors' contributions**

YO contributed to the manuscript preparation and data collection. RA contributed to the literature search, study design, and analysis of data. HS contributed to the study design. MO contributed to the study design and review of the manuscript. MN contributed to the literature search, study design, analysis of data, and review of the manuscript. KK contributed to the literature search, study design, analysis of data, and review of the manuscript. All authors read and approved the final manuscript.

**Ethics approval and consent to participate**

This study was approved by the Yamagata University Faculty of Medicine's Ethical Committee.

**Consent for publication**

Not applicable.

**Competing interests**

The authors declare that they have no competing interests.

**Publisher's Note**

Springer Nature remains neutral with regard to jurisdictional claims in published maps and institutional affiliations.

Received: 21 December 2017 Accepted: 7 March 2018

Published online: 15 March 2018

**References**

1. Roca O, Riera J, Torres F, Masclans JR (2010) High-flow oxygen therapy in acute respiratory failure. *Respir Care* 55:408–413
2. Ricard JD (2012) High flow nasal oxygen in acute respiratory failure. *Minerva Anesthesiol* 78:836–841
3. Groves N, Tobin A (2007) High flow nasal oxygen generates positive airway pressure in adult volunteers. *Aust Crit Care* 20:126–131
4. Parke R, McGuinness S, Eccleston M (2009) Nasal high-flow therapy delivers low level positive airway pressure. *Br J Anaesth* 103:886–890
5. Riera J, Pérez P, Cortés J, Roca O, Masclans JR, Rello J (2013) Effect of high-flow nasal cannula and body position on end-expiratory lung volume: a cohort study using electrical impedance tomography. *Respir Care* 58:589–596
6. Corley A, Caruana LR, Barnett AG, Tronstad O, Fraser JF (2011) Oxygen delivery through high-flow nasal cannulae increase end-expiratory lung volume and reduce respiratory rate in post-cardiac surgical patients. *Br J Anaesth* 107:998–1004
7. Bräunlich J, Beyer D, Mai D, Hammerschmidt S, Seyfarth HJ, Wirtz H (2013) Effects of nasal high flow on ventilation in volunteers, COPD and idiopathic pulmonary fibrosis patients. *Respiration* 85:319–325
8. Itagaki T, Okuda N, Tsunano Y, Kohata H, Nakataki E, Onodera M, Imanaka H, Nishimura M (2014) Effect of high-flow nasal cannula on thoraco-abdominal synchrony in adult critically ill patients. *Respir Care* 59:70–74
9. Ravenscraft SA, Burke WC, Nahum A, Adams AB, Nakos G, Marcy TW, Marini JJ (1993) Tracheal gas insufflation augments CO<sub>2</sub> clearance during mechanical ventilation. *Am Rev Respir Dis* 148:345–351
10. Dewan NA, Bell CW (1994) Effect of low flow and high flow oxygen delivery on exercise tolerance and sensation of dyspnea. A study comparing the transtracheal catheter and nasal prongs. *Chest* 105:1061–1065
11. Onodera Y, Akimoto R, Suzuki H, Nakane M, Kawamae K (2017) A high-flow nasal cannula system set at relatively low flow effectively washes out CO<sub>2</sub> from the anatomical dead space of a respiratory-system model. *Korean J Anesthesiol* 70:105–106
12. Mauri T, Alban L, Turrini C, Cambiaghi B, Carlesso E, Taccone P, Bottino N, Lissoni A, Spadaro S, Volta CA, Gattinoni L, Pesenti A, Grasselli G (2017) Optimum support by high-flow nasal cannula in acute hypoxemic respiratory failure: effects of increasing flow rates. *Intensive Care Med* 43:1453–1463
13. Kang BJ, Koh Y, Lim CM, Huh JW, Baek S, Han M, Seo HS, Suh HJ, Seo GJ, Kim EY, Hong SB (2015) Failure of high-flow nasal cannula therapy may delay intubation and increase mortality. *Intensive Care Med* 41:623–632
14. Nahum A (1998) Equipment review: tracheal gas insufflation. *Crit Care* 2:43–47
15. Spence CJT, Buchmann NA, Jermy MC (2012) Unsteady flow in the nasal cavity with high flow therapy measured by stereoscopic PIV. *Exp Fluids* 52:569–579
16. Sivieri EM, Gerdes JS, Abbasi S (2013) Effect of HFNC flow rate, cannula size, and nares diameter on generated airway pressures: an in vitro study. *Pediatr Pulmonol* 48:506–514