



## Research article

# Ginseng total saponin attenuates myocardial injury via anti-oxidative and anti-inflammatory properties



Adithan Aravinthan<sup>1</sup>, Jong Han Kim<sup>2</sup>, Paulrayer Antonisamy<sup>1</sup>, Chang-Won Kang<sup>1</sup>,  
Jonghee Choi<sup>3</sup>, Nam Soo Kim<sup>1</sup>, Jong-Hoon Kim<sup>1,\*</sup>

<sup>1</sup> College of Veterinary Medicine, Biosafety Research Institute, Chonbuk National University, Jeonju City, Korea

<sup>2</sup> Innovative Technology Research Laboratory, Korean Ginseng Corporation, Daejeon, Korea

<sup>3</sup> Department of Convergence Medical Science, College of Oriental Medicine, Kyung Hee University, Seoul, Korea

## ARTICLE INFO

## Article history:

Received 14 November 2014

Received in Revised form

27 November 2014

Accepted 1 December 2014

Available online 23 December 2014

## Keywords:

antioxidative enzymes

cardioprotection

hemodynamics

myocardial infarction

*Panax ginseng*

## ABSTRACT

**Background:** Ginseng total saponin (GTS) contains various ginsenosides. These ginsenosides are widely used for treating cardiovascular diseases in Asian communities. The aim of this study was to study the effects of GTS on cardiac injury after global ischemia and reperfusion (I/R) in isolated guinea pig hearts. **Methods:** Animals were subjected to normothermic ischemia for 60 minutes, followed by 120 minutes of reperfusion. GTS significantly increased aortic flow, coronary flow, and cardiac output. Moreover, GTS significantly increased left ventricular systolic pressure and the maximal rate of contraction ( $+dP/dt_{max}$ ) and relaxation ( $-dP/dt_{max}$ ). In addition, GTS has been shown to ameliorate electrocardiographic changes such as the QRS complex, QT interval, and RR interval.

**Results:** GTS significantly suppressed the biochemical parameters (i.e., lactate dehydrogenase, creatine kinase-MB fraction, and cardiac troponin I levels) and normalized the oxidative stress markers (i.e., malondialdehyde, glutathione, and nitrite). In addition, GTS also markedly inhibits the expression of interleukin-1 $\beta$  (IL-1 $\beta$ ), IL-6, and nuclear factor- $\kappa$ B, and improves the expression of IL-10 in cardiac tissue. **Conclusion:** These data indicate that GTS mitigates myocardial damage by modulating the biochemical and oxidative stress related to cardiac I/R injury.

Copyright © 2015, The Korean Society of Ginseng, Published by Elsevier. All rights reserved.

## 1. Introduction

According to the World Health Organization, myocardial infarction (MI) is the leading cause of mortality worldwide [1]. The primary manifestations of myocardial ischemia and reperfusion (I/R) are myocyte death and contractile dysfunction [2,3]. Numerous studies have suggested that treatment with cardioprotective drugs can significantly reduce MI [4,5]. Recently, traditional herbs have been suggested to improve heart disease [6,7].

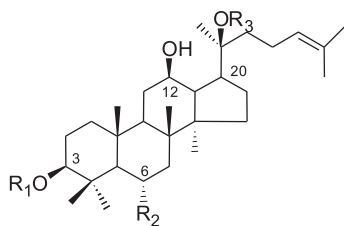
*Panax ginseng* Meyer belongs to the Araliaceae family and is a perennial herbal medicine [8]. Ginseng has been used as a folk medicine for several thousand years: *P. ginseng* is extensively used for preventing cardiovascular diseases in Asian countries [9,10]. We had previously reported that ginseng total saponin (GTS) protects against I/R-induced injury in isolated rat hearts [11].

However, to our knowledge, there is no study that evaluated the effects of GTS in guinea pigs. Therefore, this study was designed to examine the effects of GTS on I/R injury in isolated guinea pig hearts. The primary aim of this study was to evaluate hemodynamic functions such as aortic flow, coronary flow, and cardiac output and, in particular, the left ventricular systolic pressure (LVSP) and the maximal rate of contraction ( $+dP/dt_{max}$ ) and relaxation ( $-dP/dt_{max}$ ). We also aimed to determine whether GTS reduces abnormal electrocardiographic (ECG) changes such as QRS complex, QT interval, and RR interval, and whether GTS inhibits the levels of biochemical markers such as lactate dehydrogenase (LDH), creatine kinase-MB (CK-MB), cardiac troponin I (cTnI), and malondialdehyde (MDA). In addition, we established whether GTS increases antioxidant parameters, such as glutathione (GSH) and nitrite, and protects cardiomyocytes through the regulation of

\* Corresponding author. College of Veterinary Medicine, Biosafety Research Institute, Chonbuk National University, 567 Baekje-daero, Deokjin-gu, Jeonju City 561-756, Korea.

E-mail address: [jhkim1@jbnu.ac.kr](mailto:jhkim1@jbnu.ac.kr) (J.-H. Kim).

This is an Open Access article distributed under the terms of the Creative Commons Attribution Non-Commercial License (<http://creativecommons.org/licenses/by-nc/3.0>) which permits unrestricted non-commercial use, distribution, and reproduction in any medium, provided the original work is properly cited.



Ginsenosides	R <sub>1</sub>	R <sub>2</sub>	R <sub>3</sub>
Rb <sub>1</sub>	-Glc <sub>2</sub> -Glc	-H	-Glc <sub>6</sub> -Glc
Rb <sub>2</sub>	-Glc <sub>2</sub> -Glc	-H	-Glu <sub>6</sub> -Ara(pyr)
Rc	-Glc <sub>2</sub> -Glc	-H	-Glc <sub>6</sub> -Ara(fur)
Rd	-Glc <sub>2</sub> -Glc	-H	-Glc
Re	-H	-O-Glc <sub>2</sub> -Rha	-Glc
Rf	-H	-O-Glc <sub>2</sub> -Glc	-H
Rg <sub>1</sub>	-H	-O-Glc	-Glc
Rg <sub>2</sub>	-H	-O-Glc <sub>2</sub> -Rha	-H
Rg <sub>3</sub>	-Glc <sub>2</sub> -Glc	-H	-H

**Fig. 1.** Structures of the nine representative ginsenosides. They differ at three side chains attached to the common steroid ring. Superscript numbers indicate the carbon in the glucose ring that links the two carbohydrates. Ara (pyr), arabinopyranoside; Glc, glucopyranoside; Rha, rhamnopyranoside.

inflammatory cytokines and nuclear factor-kappa B (NF- $\kappa$ B) activity.

## 2. Materials and methods

### 2.1. Animals

Forty-five male Duncan-Hartley guinea pigs weighing 300–350 g were purchased from Samtako (Seoul, Korea) and used in this study. All animals were housed in colony cages at an ambient temperature of  $22 \pm 2^\circ\text{C}$  and humidity of  $45 \pm 10^\circ\text{C}$  with alternating 12-hour light and dark cycle. All animals had access to standard food and water *ad libitum* for 1 week prior to the experiment. All animal experiments were conducted in accordance with the National Institutes of Health guidelines for the care and use of laboratory animals.

### 2.2. Test drugs

GTS was obtained from Korea Ginseng Corporation (Daejeon, Korea; Fig. 1). Ginsenosides Rg<sub>1</sub>, Re, Rf, Rh<sub>1</sub>, Rb<sub>1</sub>, Rc, Rb<sub>2</sub>, Rd, Rg<sub>3s</sub>, and Rg<sub>3r</sub> were purchased from Chromadex Co. (Irvine, CA, USA) and ginsenosides Rg<sub>2s</sub> and Rg<sub>2r</sub> were obtained from Embo Laboratory (Seoul, Korea; Fig. 2). Modified Krebs–Henseleit bicarbonate (KH) solution consisted of NaCl 120.0mM, NaHCO<sub>3</sub> 25mM, KCl 4.8mM, KH<sub>2</sub>PO<sub>4</sub> 1.2mM, CaCl<sub>2</sub> 1.25mM, MgSO<sub>4</sub> 1.2mM, and glucose 11.0mM. All reagents were guaranteed grade, and high-performance liquid chromatography-grade acetonitrile and methanol were purchased from Merck (Darmstadt, Germany).

### 2.3. Preparation of GTS and liquid chromatography

The ultraperformance liquid chromatography was performed using a Waters ACQUITY system equipped with a binary solvent delivery pump, an auto sampler, and a photodiode array detector. The mobile phase consisted of acetonitrile and water at a flow rate of 0.6 mL/min. Gradient elution was as follows: isocratic elution with 15% for 0.5 minutes, followed by a 14-minute gradient to 30%, 2 2-minute gradients to 40%, 3.5-minute gradient minutes to 90%,

then isocratic elution with 90% in for 2 minutes, and then finally returned to 15% in 4 minutes.

### 2.4. Experimental protocols

The animals were divided into the following five groups ( $n = 9$  in each group): Normal control (N/C), guinea pigs orally received 0.2% (vol/vol) starch in tap water once daily for 14 days and their hearts were not subjected to I/R; GTS control, animals were fed with 200 mg/kg GTS orally once per day for 14 days and their hearts were not subjected to I/R; I/R control, animals received 0.2% starch for 14 days and then I/R was induced for 60 minutes and 120 minutes, respectively; 100GTS + I/R, animals were treated with 100 mg/kg GTS for 14 days and then I/R was induced for 60 minutes and 120 minutes, respectively; 200GTS + I/R, animals received 200 mg/kg GTS and then I/R was induced for 60 minutes and 120 minutes, respectively. At the end of reperfusion, the coronary effluents and left ventricle tissues were quickly frozen and fixed in 10% formalin ( $-80^\circ\text{C}$ ) for biochemical examination, respectively.

### 2.5. Preparation of isolated heart

After GTS administration for 14 days, animals were anesthetized with pentobarbital (30 mg/kg) intraperitoneally. The heart was excised as described previously [12]. In brief, standard perfusion was carried out at  $37^\circ\text{C}$  with a modified KH solution. The veins entering the right atrium were ligated, so that coronary sinus effluent passed into the right ventricle and was ejected through the pulmonary artery. Coronary flow was continuously recorded with a flow meter. The left atrium was cannulated through an opening by uniting the pulmonary orifices. This allowed for the natural filling and contraction of the left atrial appendage [13].

### 2.6. Measurement of hemodynamic parameters

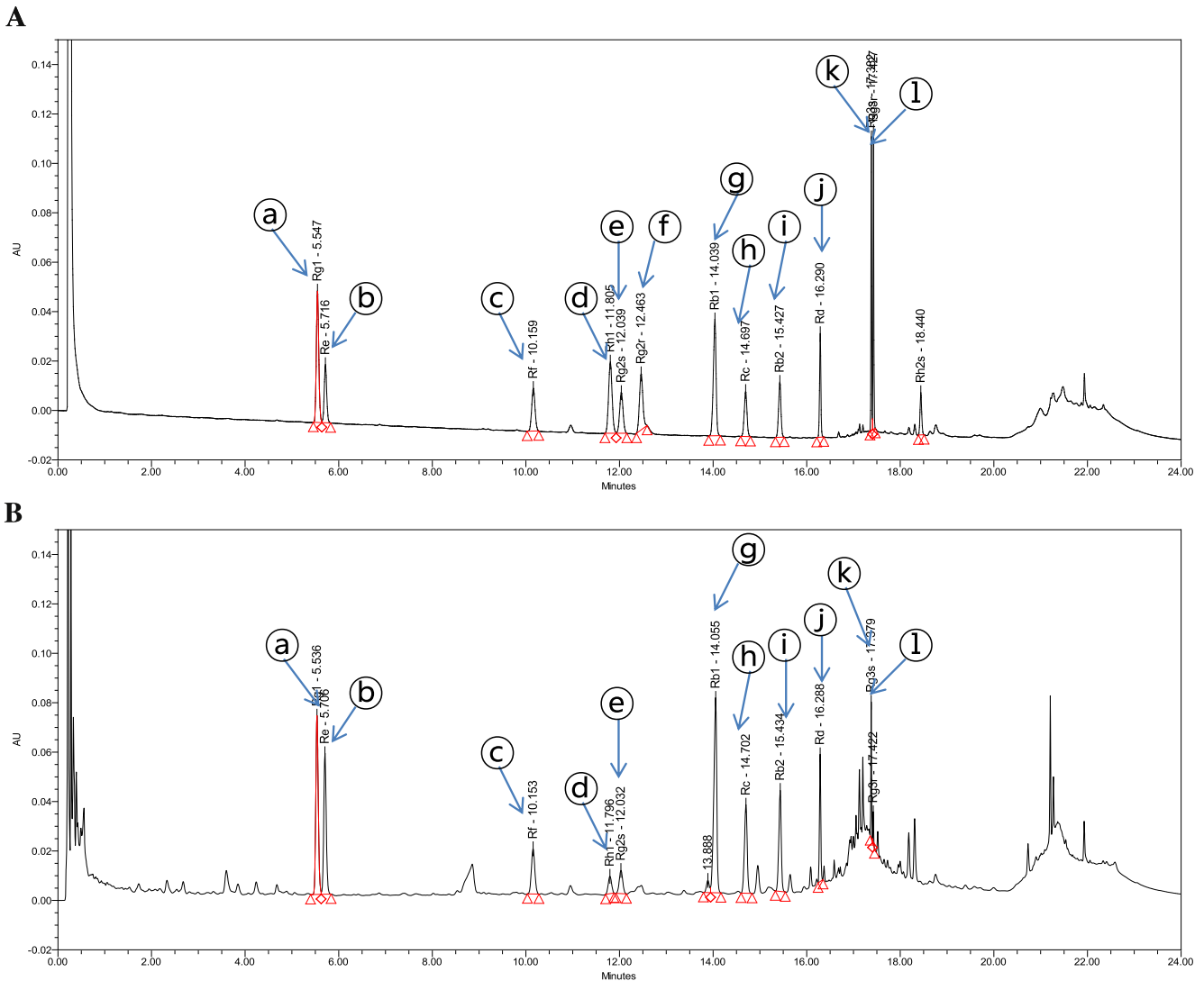
To evaluate the effects of GTS, hemodynamic data after reperfusion were compared for changes in aortic flow, coronary flow, cardiac output, and LVSP. Aortic flow was measured by the flow volume ejected from the cannula located 100 cm above the heart. Coronary flow was measured by the collection of perfusate from the pulmonary trunk (mL/min). Cardiac output was evaluated by summing the aortic and coronary effluents. LVSP was evaluated by a pressure transducer connected to the aortic cannula. In this study, the maximal rate of contraction ( $+dp/dt_{\text{max}}$ ) and relaxation ( $-dp/dt_{\text{max}}$ ) are considered indices of ventricular contractility [14]. The  $+dp/dt_{\text{max}}$  and  $-dp/dt_{\text{max}}$  values were analyzed at 30-minute intervals for reperfusion.

### 2.7. Preparation of ECG recording

For ECG recording, electrodes were placed on the epicardial surface and signals from electrodes were amplified by an electric amplifier (AB-621G; Nihon Kohden, Tokyo, Japan), evaluated on a computer (PC-9801VX; NEC, Tokyo, Japan) through an A/D converter (Analog-Pro Jr., Canopus Electric, Kobe, Japan), and analyzed with WAVE MASTER II and WM Read (Canopus Electric) as described previously [15,16]. If rhythm is irregular during the equilibration, the heart was discarded.

### 2.8. Biochemical, oxidative stress, and anti-inflammatory assays

The coronary effluent was collected after reperfusion. Myocardial injury was assessed using the LDH level [17], CK-MB activity



**Fig. 2.** Ultra-performance liquid chromatography chromatogram of the (A) ginsenosides and (B) ginseng total saponin. Peak identification: ⓐ, Rg1; ⓑ, Re; ⓒ, Rf; ⓓ, Rh1; ⓔ, Rg2s; ⓕ, Rg2r; ⓖ, Rb1; ⓗ, Rc; ⓘ, Rb2; ⓘ, Rd; ⓙ, Rg3s; and ⓚ, Rg3r.

[18], and cTnI level [19]. Evidence of oxidative stress was evaluated from left ventricle tissue using MDA and GSH analyses. In brief, tissues were homogenized in 0.1M phosphate buffer (pH 7.4) with ULTRA TURRAX homogenizer (IKA T18 basic; Wilmington, NC, USA). The homogenates were centrifuged at  $2,000 \times g$  for 10 minutes, and the supernatants were removed and assayed for MDA, GSH, and inflammatory cytokines [i.e., interleukin-1 $\beta$  (IL-1 $\beta$ ), IL-6, and IL-10] and NF- $\kappa$ B. The levels of MDA [20], GSH [21], and inflammatory cytokines [22] were measured using the methods referenced. The tissue nitric oxide (NO) levels were correlated with the nitrite levels determined from myocardial homogenates using the diazotization method [23].

### 2.9. Statistical analysis

All statistics were calculated using SigmaPlot for Windows version 12.0 (SYSTAT Software, Inc., IL, USA). Data were subjected to one-way analysis of variance (ANOVA) and one-way repeated measures ANOVA. If a statistical significance was established, the values from the control group and those from the remaining groups

were compared using the Bonferroni *t* test. For all studies, statistical significance was considered at  $p < 0.05$ .

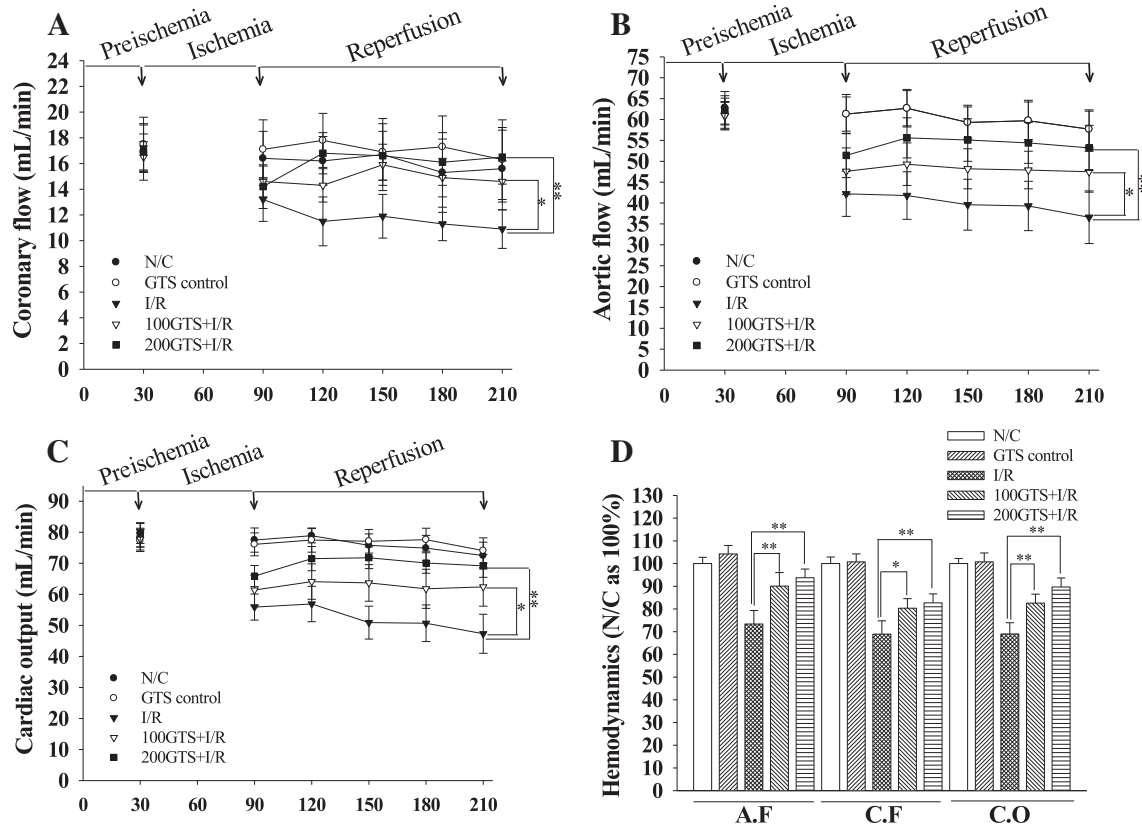
## 3. Results

### 3.1. Ultra-performance liquid chromatography analysis for ginsenosides contents

The contents of ginsenosides in GTS were as follows: Rg1, 46.17 mg/g; Re, 38.05 mg/g; Rf, 14.04 mg/g; Rh1, 4.57 mg/g; Rg2s, 7.36 mg/g; Rb1, 83.92 mg/g; Rc, 33.74 mg/g; Rb2, 35.31 mg/g; Rd, 18.67 mg/g; Rg3s, 9.09 mg/g; Rg3r, 2.35 mg/g; in addition, other minor ginsenosides and components were also present (Fig. 2).

### 3.2. Effect of GTS on the hemodynamics

Aortic flow, coronary flow, and cardiac output were significantly decreased by reperfusion for 120 minutes to an average of  $68.91 \pm 3.81\%$ ,  $73.75 \pm 2.95\%$ , and  $68.99 \pm 4.97\%$ , respectively. However, administration of GTS increased aortic flow, coronary



**Fig. 3.** Effects of 100 mg/kg and 200 mg/kg ginseng total saponin (GTS) between (A) coronary flow, (B) aortic flow, (C) cardiac output, and (D) average percent for 120-minute reperfusion on these hemodynamic parameters. Each histogram represents the mean  $\pm$  standard deviation ( $n = 9$ ). \* $p < 0.05$ , \*\* $p < 0.01$  compared with the ischemia and reperfusion (I/R) group, respectively. N/C, normal control.

flow, and cardiac output to an average of  $82.54 \pm 4.23\%$ ,  $89.94 \pm 3.97\%$ , and  $82.56 \pm 3.95\%$  in 100GTS + I/R, and to an average of  $82.69 \pm 3.97\%$ ,  $93.76 \pm 3.84\%$ , and  $82.69 \pm 3.77\%$  in 200GTS + I/R, respectively (Fig. 3). Furthermore, I/R induction significantly decreased average LVSP values to  $60.1 \pm 3.5$  mmHg as compared with N/C ( $84.6 \pm 3.0$  mmHg). However, administration of GTS increased LVSP to an average of  $67.6 \pm 3.3$  mmHg in 100GTS + I/R and to an average of  $71.1 \pm 3.1$  mmHg in 200GTS + I/R, respectively (Fig. 4A). Likewise, compared with an average  $+dP/dt_{\max}$  value of  $1,507.6 \pm 97.4$  mmHg in the N/C group, I/R induction resulted in a significant decrease in average  $+dP/dt_{\max}$  values to  $836.1 \pm 97.9$  mmHg, but administration of GTS significantly increased the  $+dP/dt_{\max}$  values to  $1,056.5 \pm 89.2$  mmHg in 100GTS + I/R and to  $1,212.0 \pm 94.9$  mmHg in 200GTS + I/R, respectively (Fig. 4B). Under the same conditions, the  $-dP/dt_{\max}$  values were  $1,292.7 \pm 98.8$  mmHg and  $787.3 \pm 87.5$  mmHg in the N/C and I/R control, respectively. Whereas administration of GTS increased  $-dP/dt_{\max}$  to an average of  $969.6 \pm 101.5$  mmHg and  $1,078.5 \pm 106.8$  mmHg in 100GTS + I/R and 200GTS + I/R, respectively (Fig. 4C). As shown in Fig. 5, there was no difference between hemodynamic parameters such as LVSP and  $\pm dP/dt_{\max}$  between the N/C and GTS control. These results suggest that GTS itself did not influence heart function.

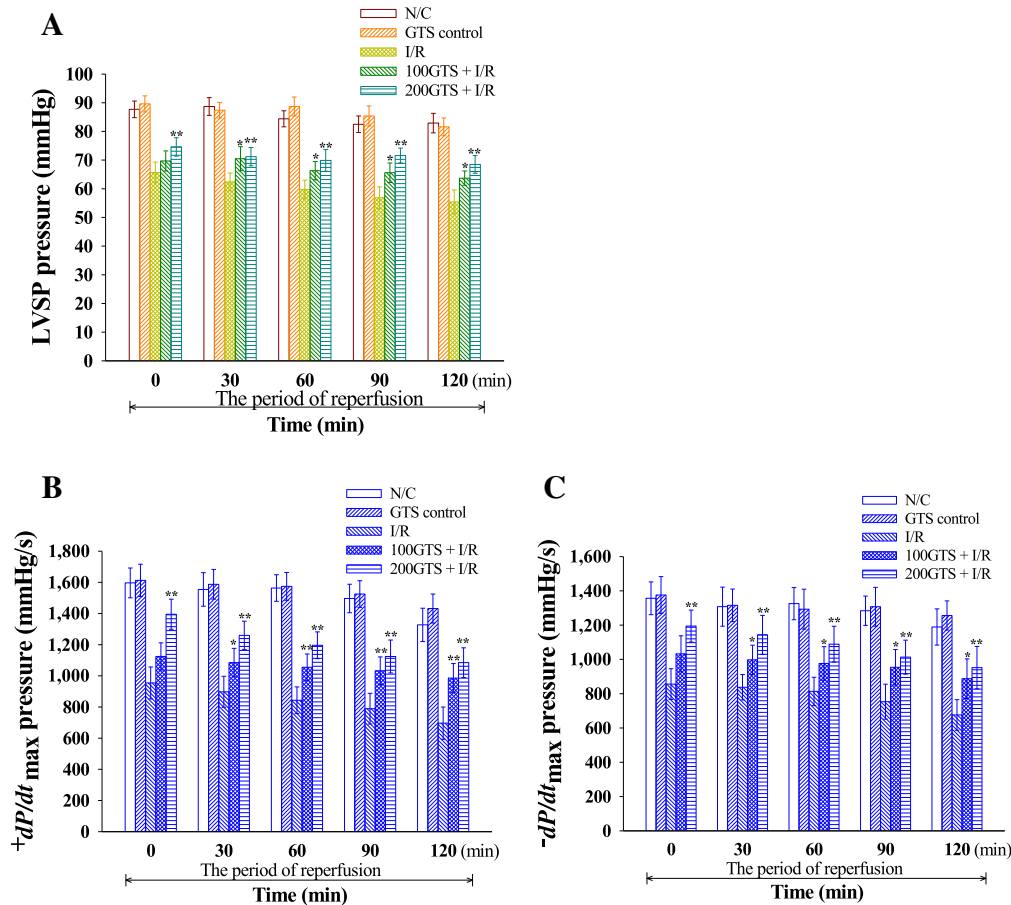
### 3.3. Effects of GTS on QRS, QT, and RR intervals

The N/C group represents a normal ECG pattern. The GTS control also did not show any changes in the ECG pattern compared with N/C (Fig. 5A). On ECG patterns in I/R control, the QRS interval,

representative of the atrioventricular conduction time, tends to be significantly prolonged compared with N/C (Fig. 5B). In I/R control, the average QRS values were  $142.88 \pm 5.32\%$  during reperfusion. However, the QRS interval was decreased in 100GTS + I/R and 200GTS + I/R. The average values of the QRS interval were  $131.54 \pm 4.08\%$  in 100GTS + I/R and  $128.76 \pm 3.84\%$  in 200GTS + I/R compared with  $142.88 \pm 5.32\%$  in I/R control. In addition, the average QT interval in I/R control was  $130.0 \pm 3.47\%$ . Whereas the average values of QT interval were  $124.1 \pm 2.85\%$  in 100GTS + I/R and  $114.84 \pm 2.9\%$  in 200GTS + I/R compared with I/R control (i.e.,  $130.0 \pm 3.47\%$ ; Fig. 5C). In addition, the average RR interval in the I/R group was  $143.02 \pm 3.85\%$  compared with 100% in the N/C group. The RR interval in the 100GTS + I/R and 200GTS + I/R groups was shorter than that in the I/R control group (Fig. 5D). Average values of RR interval were  $125.0 \pm 4.77\%$  and  $114.5 \pm 3.8\%$  in 100GTS + I/R and 200GTS + I/R, respectively.

### 3.4. Effects on biochemical, oxidative stress, and inflammatory indicators

In the 100 mg/kg GTS group, the LDH, CK-MB, and cTnI levels were significantly lower than I/R control. The MDA levels in the I/R group were higher than in the N/C group, whereas administration of GTS decreases the MDA level. In addition, the GSH and nitrite levels were significantly increased in 100GTS + I/R and 200GTS + I/R than in I/R control. However, the nitrite levels in 200GTS + I/R were not statistically significantly different from 100GTS + I/R (Table 1). Meanwhile, the expressions of IL-1 $\beta$ , IL-6, and NF- $\kappa$ B were significantly lower in the 100GTS + I/R and 200GTS + I/R groups



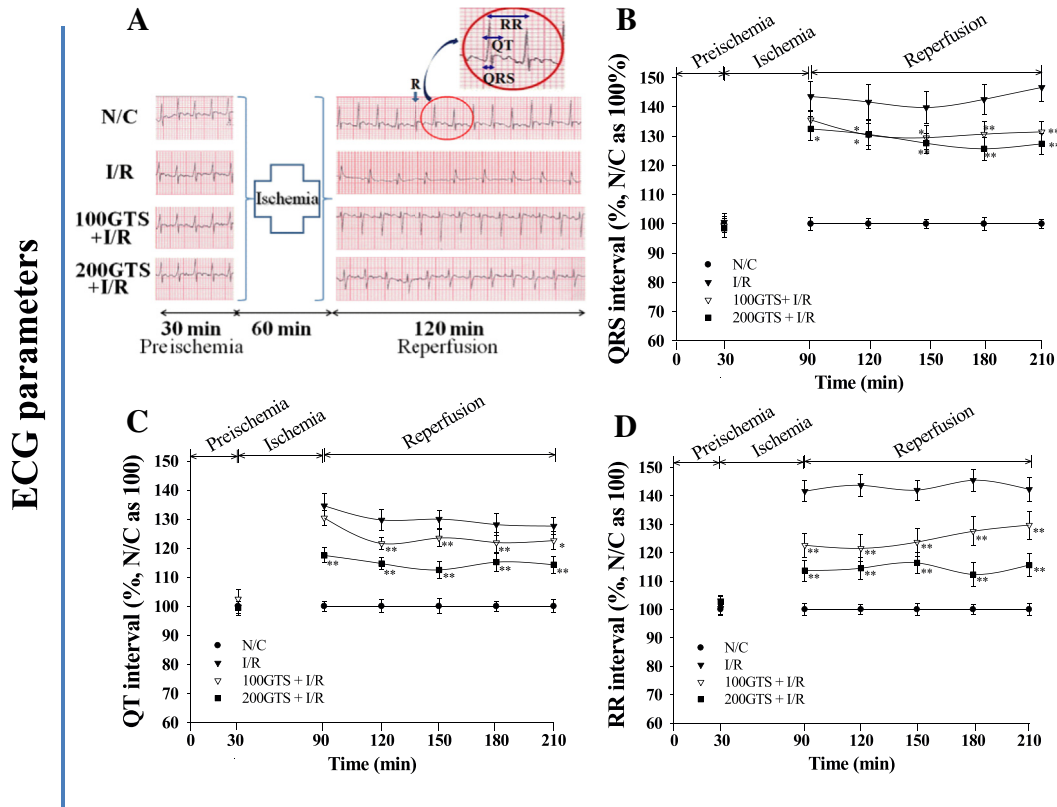
**Fig. 4.** Effects of 100 mg/kg and 200 mg/kg ginseng total saponin (GTS) on (A) left ventricular systolic pressure (LVSP), (B)  $+dP/dt_{max}$ , and (C)  $-dP/dt_{max}$ . These hemodynamic parameters were estimated at 30-minute intervals throughout the 120-minute reperfusion period. Results were representative of nine independent experiments. Values are expressed as mean  $\pm$  standard deviation. \* $p < 0.05$ , \*\* $p < 0.01$  compared with ischemia and reperfusion (I/R). N/C, normal control.

than in the I/R control group. Moreover, the expression of IL-10 in 100GTS + I/R and 200GTS + I/R was significantly increased compared with I/R control, respectively (Table 2).

#### 4. Discussion

We examined the influence of GTS on cardiac I/R injury on isolated guinea pig hearts and evaluated its cardioprotective effects. A previous report demonstrated that GTS provides cardioprotection against I/R injury in rats [11], but to the best of our knowledge, there is no study that evaluated the effects of GTS in guinea pigs. The results of this study can be divided into three points. First, GTS increases coronary flow, aortic flow, and LVSP in a dose-dependent manner. However, there was no significant difference in cardiac output between 100 mg/kg GTS and 200 mg/kg GTS. The reason for no difference in cardiac output may be attributed to the fact that cardiac output is calculated by the summation of coronary flow and aortic flow. The increase in coronary flow may be due to the “preconditioning-like role” of GTS. Second, GTS inhibited ventricular dysfunction as proved by the improvements in  $-dP/dt_{max}$ , which indicates diastolic function, and  $+dP/dt_{max}$ , which indicates systolic function. In addition, we examined I/R-induced changes in the QRS complex, QT interval, and RR interval. These differences may be due to cardiac injury induced by I/R, because the QT interval indicates the ventricular depolarization and repolarization times [24]. Therefore, these results suggest that I/R injury can change the

repolarization time. These differences between QT and RR intervals may have important meaning from a clinical point of view [24]. Administration of GTS decreased the production of pathological ECG patterns, suggesting the cardioprotective action of GTS. Third, the occurrence of I/R injury as a result of various processes leads to the formation of reactive oxygen species (ROS), which causes severe tissue damage [25], eventually leading to cell death [26]. It is well-known that ROS are eliminated by antioxidant mechanisms [25]. In our study, MDA, which is an index of lipid damage by ROS, was found to be decreased in the GTS groups. In addition, GSH provides a defense mechanism against ROS, and in the GTS groups a decrease in ROS production was noted. Decreased levels of LDH, CK-MB, and cTnI in the GTS groups suggested that there is lower cardiac I/R injury. In this study, GTS also increased the nitrite level, which is an index of NO production [27]. The increased nitrite level might induce cardioprotective effects by a preconditioning role related to NO production [9]. Furthermore, administration of GTS elevated the expression of IL-10, anti-inflammatory cytokine, and inhibited the activation of some proinflammatory cytokines including IL-1 $\beta$  and IL-6. NF- $\kappa$ B serves as an upstream signaling factor to modulate the expression of apoptotic genes [22]. Yang et al [28] found that the NF- $\kappa$ B mediated apoptosis, which was a crucial parameter for cardiac injury. In addition, it was reported that inhibition of NF- $\kappa$ B increases the myocardial function [22]. In this regard, we found that GTS decreased the expression of NF- $\kappa$ B against I/R injury. This result was consistent with those reported



**Fig. 5.** Effects of 100 mg/kg and 200 mg/kg ginseng total saponin (GTS) on representative electrocardiogram tracings. (A) Enlarged electrocardiographic (ECG) patterns such as QRS complex, QT interval, and RR interval are shown (circled area on ECG of the N/C lane). These pictures were representative of ECG patterns in each group. Effects of 100 mg/kg and 200 mg/kg GTS on (B) QRS, (C) QT interval, and (D) RR interval. Values are expressed as mean  $\pm$  standard deviation for eight independent experiments in each group. \* $p < 0.05$ , \*\* $p < 0.01$  compared with I/R. I/R, ischemia and reperfusion; N/C, normal control.

**Table 1**  
Effect of GTS on cardiac markers and oxidative stress, and nitrite levels after I/R-induced myocardial injury

Periods	Group	LDH (IU/L)	CK-MB (IU/L)	cTnI (mg/L)	MDA (nmol/g protein)	GSH (nmol/g protein)	Nitrite (mmol/g protein)
After reperfusion	N/C	54.5 $\pm$ 11.3	41.3 $\pm$ 7.2	1.12 $\pm$ 0.13	18.7 $\pm$ 2.2	37.35 $\pm$ 1.98	264.68 $\pm$ 29.2
	I/R	313.8 $\pm$ 26.4 <sup>1)</sup>	153.5 $\pm$ 13.6 <sup>1)</sup>	4.35 $\pm$ 0.24 <sup>1)</sup>	143.8 $\pm$ 12.4 <sup>1)</sup>	9.34 $\pm$ 2.22 <sup>1)</sup>	119.73 $\pm$ 39.8 <sup>1)</sup>
	100GTS + I/R	254.2 $\pm$ 32.7 <sup>3)</sup>	114.7 $\pm$ 15.8 <sup>3)</sup>	3.56 $\pm$ 0.25 <sup>3)</sup>	106.5 $\pm$ 19.6 <sup>2)</sup>	14.32 $\pm$ 3.87 <sup>2)</sup>	176.3 $\pm$ 42.7 <sup>2)</sup>
	200GTS + I/R	186.3 $\pm$ 29.8 <sup>3)</sup>	91.5 $\pm$ 12.9 <sup>3)</sup>	2.91 $\pm$ 0.18 <sup>3)</sup>	95.7 $\pm$ 17.4 <sup>3)</sup>	19.65 $\pm$ 1.96 <sup>3)</sup>	247.6 $\pm$ 32.7 <sup>3)</sup>

Results are expressed as the mean  $\pm$  standard deviation in each group.

<sup>1)</sup> Significantly different ( $p < 0.01$ ) from N/C.

<sup>2)</sup> Significantly different ( $p < 0.05$ ) from I/R control.

<sup>3)</sup> Significantly different ( $p < 0.01$ ) from I/R control.

CK-MB, creatine kinase-MB; cTnI, cardiac troponin I; GSH, glutathione; GTS, ginseng total saponin; I/R, ischemia and reperfusion; LDH, lactate dehydrogenase; MDA, malondialdehyde; N/C, normal control.

**Table 2**  
Effect of GTS on inflammation and apoptosis in left ventricle tissues of guinea pig

Periods	Group	IL-1 $\beta$ (pg/mL)	IL-6 (pg/mL)	IL-10 (pg/mL)	NF- $\kappa$ B (IOD)	B-actin (IOD)	IOD ratio
After reperfusion	N/C	13.86 $\pm$ 3.79	5.42 $\pm$ 1.97	514.86 $\pm$ 87.7	34,764.52 $\pm$ 2,965.7	10,263.71 $\pm$ 379.65	3.17 $\pm$ 0.32
	I/R	35.96 $\pm$ 6.84 <sup>1)</sup>	16.56 $\pm$ 3.75 <sup>1)</sup>	628.63 $\pm$ 92.1 <sup>1)</sup>	52,569.91 $\pm$ 3,267.1 <sup>1)</sup>	10,735.91 $\pm$ 543.72 <sup>1)</sup>	4.97 $\pm$ 0.43 <sup>1)</sup>
	100GTS + I/R	26.19 $\pm$ 4.52 <sup>2)</sup>	11.07 $\pm$ 2.43 <sup>2)</sup>	714.32 $\pm$ 106.5 <sup>2)</sup>	48,219.53 $\pm$ 3,154.9 <sup>2)</sup>	10,549.17 $\pm$ 515.26 <sup>2)</sup>	4.23 $\pm$ 0.39 <sup>2)</sup>
	200GTS + I/R	22.62 $\pm$ 4.17 <sup>3)</sup>	9.64 $\pm$ 2.07 <sup>3)</sup>	784.37 $\pm$ 78.2 <sup>3)</sup>	43,854.27 $\pm$ 3,269.9 <sup>3)</sup>	10,583.92 $\pm$ 437.65 <sup>3)</sup>	3.88 $\pm$ 0.35 <sup>3)</sup>

Results are expressed as the mean  $\pm$  standard deviation in each group.

<sup>1)</sup> Significantly different ( $p < 0.01$ ) from N/C.

<sup>2)</sup> Significantly different ( $p < 0.05$ ) from I/R control.

<sup>3)</sup> Significantly different ( $p < 0.01$ ) from I/R control.

GTS, ginseng total saponin; I/R, ischemia and reperfusion; IL, interleukin; IOD, integrated optical density; N/C, normal control; NF- $\kappa$ B, nuclear factor-kappa B.

previously [5,29]. Taken together, it can be suggested that the beneficial influences of inflammatory cytokines and NF- $\kappa$ B play a role in myocardial protection. In conclusion, the results of this study suggest a cardioprotective effect for GTS.

### Conflicts of interest

The authors declare that there is no conflict of interests regarding the publication of this paper.

### Acknowledgments

This research was supported by the Basic Science Research Program through the National Research Foundation of Korea funded by the Ministry of Education, Science and Technology (2012R1A1A4A01011658) and, this work was supported by the 2012 grant from the Korean Society of Ginseng.

### References

- [1] Ostadal B. The past, the present and the future of experimental research on myocardial ischemia and protection. *Pharmacol Rep* 2009;61:3–12.
- [2] Gross GJ, Kersten JR, Warltier DC. Mechanisms of postischemic contractile dysfunction. *Ann Thorac Surg* 1999;68:1898–904.
- [3] Verma S, Fedak PW, Weisel RD, Butany J, Rao V, Maitland A, Li RK, Dhillon B, Yau TM. Fundamentals of reperfusion injury for the clinical cardiologist. *Circulation* 2002;105:2332–6.
- [4] Buja LM. Myocardial ischemia and reperfusion injury. *Cardiovasc Pathol* 2005;14:170–5.
- [5] Kim JH. Cardiovascular diseases and *Panax ginseng*: a review on molecular mechanisms and medical applications. *J Ginseng Res* 2012;36:16–26.
- [6] Dhar ML, Dhar MM, Dhawan BN, Mehrotra BN, Ray C. Screening of Indian plants for biological activity. *Indian J Exp Biol* 1968;6:232–47.
- [7] Hertog MG, Feskens EJ, Hollman PC, Katan MB, Kromhout D. Dietary antioxidant flavonoids and risk of coronary heart diseases. The Zutphen Elderly Study. *Lancet* 1993;342:1007–11.
- [8] Park YH, Kim YC, Park SU, Lim HS, Kim JB, Cho BK, Bae HH. Age-dependent distribution of fungal endophytes in *Panax ginseng* roots cultivated in Korea. *J Ginseng Res* 2012;36:327–33.
- [9] Zhou H, Hou SZ, Luo P, Zeng B, Wang JR, Wong YF, Jiang ZH, Liu L. Ginseng protects rodent hearts from acute myocardial ischemia-reperfusion injury through GR/ER-activated RISK pathway in an endothelial NOS-dependent mechanism. *J Ethnopharmacol* 2011;17:135:287–98.
- [10] Kim TH, Lee SM. The effects of ginseng total saponin, panaxadiol and panaxatriol on ischemia/reperfusion injury in isolated rat heart. *Food Chem Toxicol* 2010;48:1516–20.
- [11] Kim JH. Protective roles of ginseng saponin in cardiac ischemia and reperfusion injury. *J Ginseng Res* 2009;33:283–93.
- [12] Massoudy P, Becker BF, Gerlach E. Bradykinin accounts for improved post-ischemic function and decreased glutathione release of guinea pig heart treated with the angiotensin-converting enzyme inhibitor ramiprilat. *J Cardiovasc Pharmacol* 1994;23:632–9.
- [13] Massoudy P, Beblo S, Raschke P, Zahler S, Becker BF. Influence of intact left atrial appendage on hemodynamic parameters of isolated guinea pig heart. *Eur J Med Res* 1998;3:470–4.
- [14] Guo L, Dong Z, Guthrie H. Validation of a guinea pig Langendorff heart model for assessing potential cardiovascular liability of drug candidates. *J Pharmacol Toxicol Methods* 2009;60:130–51.
- [15] Minematsu T, Ohtani H, Yamada Y, Sawada Y, Sato H, Iga T. Quantitative relationship between myocardial concentration of tacrolimus and QT prolongation in guinea pigs: pharmacokinetic/pharmacodynamic model incorporating a site of adverse effect. *J Pharmacokinetic Pharmacodyn* 2001;28:533–54.
- [16] Ohtani H, Hanada E, Yamamoto K, Sawada Y, Iga T. Pharmacokinetic pharmacodynamic analysis of the electrocardiographic effects of terfenadine and quinidine in rats. *Biol Pharm Bull* 1996;19:1189–96.
- [17] Asha S, Radha E. Effect of age and myocardial infarction on serum and heart lactic dehydrogenase. *Exp Gerontol* 1985;20:67–70.
- [18] Gerhardt W, Ljungdahl L, Herbert AK. Troponin T and CK-MB (mass) in early diagnosis of ischemic myocardial injury. *Clin Biochem* 1993;26:231–40.
- [19] Bertinchant JP, Larue C, Pernel I, Ledermann B, Fabbro-Peray P, Beck L, Calzolari C, Trinquier S, Nigond J, Pau B. Release kinetics of serum cardiac troponin I in ischemic myocardial injury. *Clin Biochem* 1996;29:587–94.
- [20] Ohkawa H, Ohishi N, Yagi K. Assay for lipid peroxidase in animal tissues by thiobarbituric acid reaction. *Anal Biochem* 1979;95:351–8.
- [21] Beutler E. The glutathione instability of drug sensitive red cells: a new method for the *in vitro* detection of drug sensitivity. *J Lab Clin Med* 1957;49:84–95.
- [22] Chen Z, Wu Z, Huang C, Zhao Y, Zhou Y, Zhou X, Lu X, Mao L, Li S. Effect of lipoxin A4 on myocardial ischemia reperfusion injury following cardiac arrest in a rabbit model. *Inflammation* 2013;36:468–75.
- [23] Wang GF, Satake M, Horita K. Spectrophotometric determination of nitrate and nitrite in water and some fruit samples using column preconcentration. *Talanta* 1998;46:671–8.
- [24] Yi P, Zhongwei S. Characterization of QT and RR interval series during acute myocardial ischemia by means of recurrence quantification analysis. *Med Biol Eng Comput* 2011;49:25–31.
- [25] Kaul N, Siveski-Illiskovic N, Hill M, Slezak J, Singal PK. Free radicals and the heart. *J Pharmacol Toxicol Methods* 1993;30:55–67.
- [26] Robicsek F, Schaper J. Reperfusion injury: fact or myth? *J Card Surg* 1997;12:133–7.
- [27] Ikkizler M, Erkasap N, Dernek S, Kural T, Kaygisiz Z. Dietary polyphenol quercetin protects rat hearts during reperfusion: enhanced antioxidant capacity with chronic treatment. *Anadolu Kardiyol Derg* 2007;7:404–10.
- [28] Yang J, Jiang H, Yang J, Ding JW, Chen LH, Li S, Zhang XD. Valsartan preconditioning protects against myocardial ischemia-reperfusion injury through TLR4/NF- $\kappa$ B signaling pathway. *Mol Cell Biochem* 2009;330:39–46.
- [29] Liu Q, Kou JP, Yu BY. Ginsenoside Rg1 protects against hydrogen peroxide-induced cell death in PC12 cells via inhibiting NF- $\kappa$ B activation. *Neurochem Int* 2011;58:119–25.