



The Provincial Baseline of PM_{2.5} in China and Its Hierarchical Management Strategy

Doudou Jin¹, Shaojie Kong², Changhong Ou², Anwei Chen^{1*} and Fei Li^{2*}

¹ College of Resources and Environment, Hunan Agricultural University, Changsha, China, ² School of Information and Safety Engineering, Zhongnan University of Economics and Law, Wuhan, China

Keywords: cumulative frequency curve method, PM_{2.5} baseline, hierarchical management strategy, China, air quality

INTRODUCTION

Atmospheric PM_{2.5} pollution has become a challenge worldwide, especially in some developing countries (1–3). PM_{2.5} has become the primary pollutant in most cities in China (4) and attracted more and more scholars' attention (5–8). In recent years, although the PM_{2.5} pollution in some areas of China shows a slight decrease, which does not alleviate this serious problem (9). If more accurate and effective control measures are taken, the PM_{2.5} concentration (population-weighted) will gradually reduce to 35 $\mu\text{g}/\text{m}^3$ (China's current air quality standard) in 2030 (10). Although the Chinese government has taken many ways to deal with PM_{2.5} pollution, air quality is still not optimistic, especially in winter (4). The definitions of pollution in China are based on the air quality standard value (10 $\mu\text{g}/\text{m}^3$) formulated by the World Health Organization (WHO) or national level I concentration limit (15 $\mu\text{g}/\text{m}^3$) and national secondary concentration limit (35 $\mu\text{g}/\text{m}^3$). However, the size of the human population and their activities, and the level of economic development in each region are quite different. Therefore, using the "One-Size Fits All" policy for PM_{2.5} control on a relatively large scale is obviously unscientific (11, 12).

The introduction of baseline value in PM_{2.5} control can effectively overcome the shortcomings mentioned above. The baseline is the upper limit of element content in a certain area under the influence of human activities (calculated under low human activities). There are similarities and differences between baseline, background, and standard values. The background value is the statistical average of the quality parameters obtained from monitoring relatively clean areas in a region. The standard value is formulated by relevant national laws and regulations to protect and improve the living environment and ecological environment to ensure human health. However, environmental standards cannot replace the baseline due to the different geological conditions, geochemical characteristics, and human activities in different regions. In baselines investigation, the methods in geochemical baseline investigation are widely referenced. However, the geochemical background and geochemical baseline are often confused or replaced by each other in concept and application in many situations. For many people, the differences between them are ignored. Cannon, head of the Yellowstone geochemical baseline research project in the United States, once pointed out that the geochemical background represents the concentration of elements in natural substances, excluding the impact of human activities (13). On the contrary, the baseline represents the concentration of elements measured in time in some places in areas disturbed by human activities, which is usually not the actual background. A geochemical baseline is a natural change in the concentration of chemical elements in the earth's surface materials. However, this natural change does not exclude the impact of human activities. It aims to describe the current supergene environmental conditions and is a benchmark material to measure future environmental changes.

OPEN ACCESS

Edited by:

Mohiuddin Md. Taimur Khan,
Washington State University Tri-Cities,
United States

Reviewed by:

Shani Tiwari,
Council of Scientific and Industrial
Research (CSIR), India
Junyuan Guo,
Chengdu University of Information
Technology, China

*Correspondence:

Anwei Chen
a.chen@hunau.edu.cn
Fei Li
lfei@zuel.edu.cn

Specialty section:

This article was submitted to
Environmental Health and Exposome,
a section of the journal
Frontiers in Public Health

Received: 31 March 2022

Accepted: 17 June 2022

Published: 12 July 2022

Citation:

Jin D, Kong S, Ou C, Chen A and Li F
(2022) The Provincial Baseline of
PM_{2.5} in China and Its Hierarchical
Management Strategy.
Front. Public Health 10:908760.
doi: 10.3389/fpubh.2022.908760

It has greater practical significance and can provide an essential basis for future environmental risk assessment. The normalization method and cumulative frequency curve method are the most commonly used methods for determining geochemical baseline (14). At first, many scientists used the normalization method to study the concentration of elements in marine and estuarine sediments. Later, it was introduced into the study of geochemical baseline, so its scope of application is limited. The cumulative frequency curve method has a long history. It can determine the baseline value of any substance. Therefore, this paper uses the cumulative frequency curve method to explore determining the Chinese baseline values of PM_{2.5} on a provincial scale.

The primary aims of this work are to establish the baseline values of PM_{2.5} in 31 provinces across China using the cumulative frequency curve method. Then, the provinces are classified according to the relationship between baseline values, monitoring values, and standard values. Finally, the PM_{2.5} hierarchical management strategy is proposed for the three types of provinces obtained.

METHODS OF THE CUMULATIVE FREQUENCY CURVE

Bauer et al. devised the cumulative frequency curve approach to assess geochemical baselines (15, 16). The method involves plotting the distribution curve on the decimal axis with the element concentration as the X-axis and the cumulative frequency as the Y-axis. A curve usually has one or two inflection points (points where the curve has a significant deflection). Below the inflection point represents the lower limit of human activities, and the baseline value was obtained by averaging the data less than the inflection point. If the cumulative frequency curve was nearly straight without an inflection point, the average of all data was utilized as the baseline value (17). Certainly, when the cumulative frequency curve method is used in establishing the PM_{2.5} baseline, some uncertainties or differences need to be explained. Firstly, according to the relevant research, the calculation of element geochemical baseline value using this method requires long time-series data. While, due to Spatio-temporal pollution characteristics of PM_{2.5}, the daily data for 2018 and 2019 is preliminarily selected and the effect of time series length can be further discussed. Secondly, this work selected the provincial scale, so we should later consider whether the application details of this method will change if the scale changes under different environmental control decision needs.

DATA SOURCES

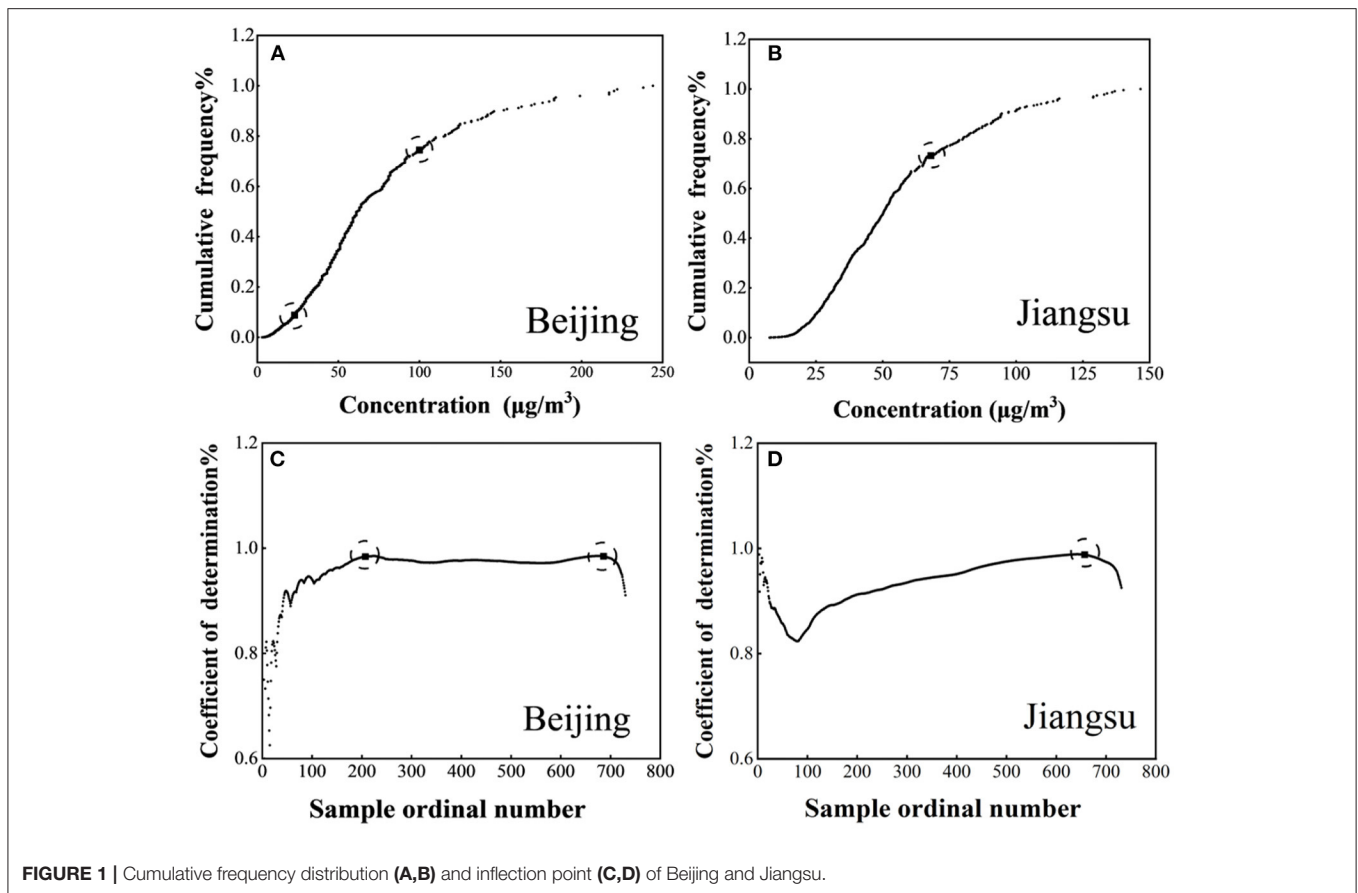
PM_{2.5} data are obtained from China National Environmental Monitoring Center (<http://www.cnemc.cn/>). Due to the unavailability of data from Hong Kong, Macao, and Taiwan, data from 31 provinces on the mainland were analyzed.

PM_{2.5} DETERMINATION OF BASELINE VALUE

The first step is to draw the cumulative frequency curve. The second step is gradually calculating the fitting curve's determination coefficient between each point and the first point. Then, a chart was obtained using the ordinal number as the x-axis and the determination coefficient as the y-axis. First, the determination coefficient will fluctuate and then reach the relatively high point (higher than the data surroundings), the first inflection point of the cumulative frequency curve. Subsequently, the determination coefficient may reach the highest point and the second inflection point again. Take Beijing and Jiangsu for examples (Figures 1C,D). Beijing's coefficient of determination began with a series of fluctuations and then gradually rose to the highest point, the first inflection point of Beijing's cumulative frequency curve. Starting from the first inflection point, the second inflection point can be obtained in the same way. The coefficient of determination of Jiangsu also has a series of fluctuations at first and then increases to a maximum point, and then there is no increase in fluctuation. Therefore, the cumulative frequency curve of Jiangsu has only one inflection point. The cumulative frequency curves of Beijing and Jiangsu are shown in Figures 1A,B.

After determining the inflection point, the next step is to determine which inflection point is used as the upper limit of the baseline value. When the cumulative frequency curve has only one inflection point, the average value of all points below the inflection point shall be taken as the baseline value. When the cumulative frequency curve has two inflection points, compare the similarity between the frequency distribution between the two inflection points and the frequency distribution before and after the first inflection point. If it is close to the first inflection point, select the first inflection point as the upper limit of the calculated baseline value. Otherwise, select the second inflection point.

It can be seen from Table 1 that the cumulative frequency curve of 93.55% of provinces (29 provinces) has two inflection points, indicating that human activities have a significant impact on PM_{2.5} emission. It can be known from the provincial population data (which could be found from the data availability link), that the population of these provinces in 2018 and 2019 is also relatively large. The annual average concentrations limit of China air quality standard (GB3095-2012) and WHO phase I target (IT1) are 35 µg/m³. Comparing the baseline value, monitoring value, and the standard value of each province one by one, it is found that the average value of 2-year monitoring value of 61.29% of provinces and the baseline value of 29.03% of provinces exceed this value. All baseline values are lower than the average value of the 2-year monitoring value. Based on this, it is very unscientific to adopt the same standard requirements for different provinces. In addition, since the baseline value is obtained under the condition of low human activities, it is tough to directly require PM_{2.5} emissions to be reduced to the same standard value for some provinces where the baseline value exceeds the standard value. For example, the baseline value of Anhui Province (39.44 µg/m³) is greater than the standard



value. Therefore, it is being challenged to directly require it to reduce PM_{2.5} emissions to the standard value. Anhui Province can implement “step-by-step” measures to reduce the emission of PM_{2.5} to the baseline value first and then to the standard value.

CLASSIFICATION CONTROL BASED ON THREE VALUES

According to the relationship between baseline, monitoring, and standard values, 31 provinces are divided into three categories for classified control (Figure 2). As shown in Figure 2, Guangxi, Zhejiang, Gansu, Jilin, Guangdong, Inner Mongolia, Guizhou, Qinghai, Fujian, Yunnan, Hainan, and Tibet belong to the first category. Henan, Tianjin, Hebei, Shanxi, Anhui, Beijing, Jiangsu, and Shandong belong to the second category; Shaanxi, Liaoning, Hubei, Hunan, Jiangxi, Xinjiang, Ningxia, Chongqing, Sichuan, Shanghai, and Heilongjiang belong to the third category. The first category’s monitoring value and baseline value are all lower than the standard value. Among them, the baseline value of Zhejiang, Guangdong, Fujian, and Tibet is not much different from the average value of the 2 years. Therefore, while these provinces continue to maintain this state, they can further move closer to the baseline value and strive to minimize the emission of PM_{2.5}. The baseline value

and monitoring value of the second category are all higher than the standard value. Combined with the above, it can be seen that the baseline value is calculated under low human activities. If these provinces are directly required to reduce the emission of PM_{2.5} to the standard value, it is complicated and unscientific. Therefore, provinces belonging to this category can implement “step-by-step” measures, that is, reduce to the baseline value first and then reduce to the standard value. For provinces belonging to the third category, it is necessary to reduce the emission of PM_{2.5} to the national standard first and then strive to promote the green and high-quality development of the economy further to reduce the emission of PM_{2.5} to the baseline value.

CONCLUSION

The baseline value of PM_{2.5} is determined by the cumulative frequency curve method. According to the relationship between baseline value, monitoring value, and national standard value (35 µg/m³), the PM_{2.5} hierarchical management strategy is proposed. Ninety-three percent of the provinces’ PM_{2.5} emissions are significantly affected by different degrees of human activities. The provinces are divided into three categories, and different compliance requirements are put forward. The monitoring

TABLE 1 | PM_{2.5} in each province baseline and two-year mean (μg/m³).

Province	Inflection point	Baseline value	Average annual value	Difference	Province	Inflection point	Baseline value	Average annual value	Difference
Guangxi	2	26.70	33.52	6.82	Anhui	2	39.48	47.64	8.16
Zhejiang	2	30.23	33.04	2.81	Beijing	2	37.38	46.12	8.74
Gansu	2	28.78	32.01	3.23	Jiangsu	1	36.41	43.48	7.07
Jilin	2	23.22	31.67	8.45	Shandong	2	36.01	45.91	9.9
Guangdong	2	27.40	28.95	1.55	Shaanxi	1	34.94	47.79	12.85
Inner Mongolia	2	23.31	27.24	3.93	Liaoning	2	34.42	39.45	5.03
Guizhou	2	23.56	26.95	3.39	Hubei	2	34.41	45.12	10.71
Qinghai	2	22.87	26.07	3.2	Hunan	2	32.92	40.65	7.73
Fujian	2	23.37	24.78	1.41	Jiangxi	2	32.17	36.12	3.95
Yunnan	2	19.22	22.67	3.45	Xinjiang	2	46.77	50.51	3.74
Hainan	2	13.07	15.86	2.79	Ningxia	2	30.94	34.65	3.71
Tibet	2	11.74	13.32	1.58	Chongqing	2	31	38.31	7.31
Henan	2	42.64	60.68	18.04	Sichuan	2	30.04	36.09	6.05
Tianjin	2	41.17	51.5	10.33	Shanghai	2	27.61	34.42	6.81
Hebei	2	40.78	52.91	12.13	Heilongjiang	2	21.68	37.97	16.29
Shanxi	2	39.77	50.64	10.87					

1-one inflection point, 2-two inflection points; the difference between the baseline value and the annual mean value.

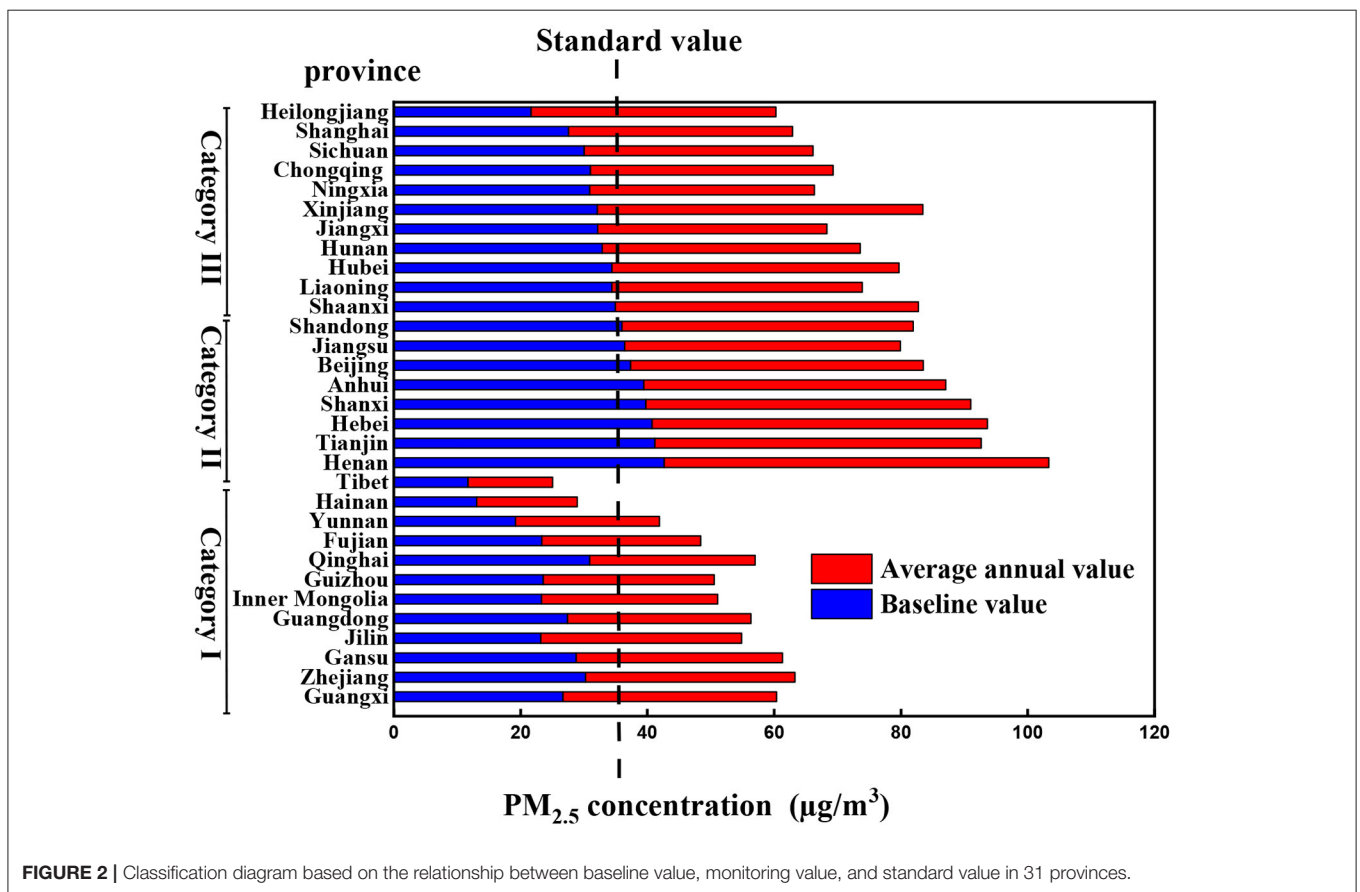


FIGURE 2 | Classification diagram based on the relationship between baseline value, monitoring value, and standard value in 31 provinces.

value and baseline value of the first category of provinces are all lower than the standard value. While these provinces continue to maintain this state, they can further move closer

to the baseline value and strive to minimize the emission of PM_{2.5}. The baseline value and monitoring value of the second category of provinces are higher than the standard

value. Provinces in this category can implement “step-by-step” measures that are first reduced to the baseline value and then reduced to the standard value. The baseline value for the third category of provinces is lower than the standard value, while the monitoring value is higher. These provinces can first reduce the emission of PM_{2.5} to the national standard and then strive to promote the development of a green and high-quality economy to reduce the emission of PM_{2.5} further to reach the baseline value.

DATA AVAILABILITY STATEMENT

The original contributions presented in the study are publicly available. This data can be found here: <https://doi.org/10.6084/m9.figshare.19779688.v1>.

REFERENCES

- Maji KJ, Arora M, Dikshit AK. Premature mortality attributable to PM_{2.5} exposure and future policy roadmap for “air apocalypse” affected Asian megacities. *Process Safe Environ.* (2018) 118:371–83. doi: 10.1016/j.psep.2018.07.009
- Zhou Z, Tan ZB, Yu XH, Zhang RT, Wei YM, Zhang MJ, et al. The health benefits and economic effects of cooperative PM_{2.5} control: a cost-effectiveness game model. *J Clean Prod.* (2019) 228:1572–85. doi: 10.1016/j.jclepro.2019.04.381
- Chen XY, Li F, Zhang JD, Zhou W, Wang XY, Fu HJ. Spatiotemporal mapping and multiple driving forces identifying PM_{2.5} variation and its joint management strategies across China. *J Clean Prod.* (2020) 250:119–534. doi: 10.1016/j.jclepro.2019.119534
- Li JC, Gao QX, Li L, Zheng YF, Gao WK. Enlightenment and suggestions on the air quality of Beijing Tianjin and Hebei were revealed by primary pollutants. *Res Environ Sci.* (2018) 31:1651–61. doi: 10.13198/j.issn/1001-6929.2018.07.07
- Fan H, Zhao CF, Yang YK, Yang XC. Spatio-temporal variations of the PM_{2.5}/PM₁₀ ratios and its application to air pollution type classification in China. *Front Environ Sci.* (2021) 9:218. doi: 10.3389/fenvs.2021.692440
- An Z, Huang RJ, Zhang R, Tie X, Li G, Cao J, et al. Severe haze in Northern China: a synergy of anthropogenic emissions and atmospheric processes. *Proc Natl Acad USA.* (2019) 116:8657–66. doi: 10.1073/pnas.1900125116
- Chen R, Yang C, Li P, Wang JW, Liang Z, Wang WZ, et al. Long-term exposure to ambient PM_{2.5} sunlight and obesity: a nationwide study in China. *Front Endocrinol.* (2021) 12:790294. doi: 10.3389/fendo.2021.790294
- Mao LX, Wang L, Pan X, Zhang M, Wu X, Zhang W. A study on the dynamic spatial spillover effect of urban form on PM_{2.5} concentration at county scale in China. *Atmos Res.* (2022) 269:2022269. doi: 10.1016/j.atmosres.2022.106046
- Zhang YH, Yang XY, Cheng H, Zhang LH, Zhao AM, Zhou CY, et al. Remote sensing monitoring and analysis of PM_{2.5} and NO₂ concentration changes in China and key regions in the first quarter of 2018–2020. In: *Proceedings of the Annual Conference of Science and Technology of the Chinese Society of Environmental Sciences (Volume I)*. Nanjing (2020). p. 1239–44.
- Yue H, He C, Huang Q, Yin D, Bryan BA. The stronger policy is required to substantially reduce deaths from PM_{2.5} pollution in China. *Nat Commun.* (2020) 11:1–10. doi: 10.1038/s41467-020-15319-4
- Chen J, Zhou CS, Wang SJ, Hu JC. Identifying the socioeconomic determinants of population exposure to particulate matter (PM_{2.5}) in China

AUTHOR CONTRIBUTIONS

DJ and SK structured and wrote the manuscript. CO and SK analyzed the data and contributed with descriptive analysis. FL and AC reviewed the manuscript. All authors contributed to manuscript revision, read, and approved the submitted version.

FUNDING

This study was funded by the National Natural Science Foundation of China (51879105), Hubei Provincial Outstanding Young Science and Technology Innovation Team Project (T2021032), and Fundamental Research Funds for the Central Universities from Zhongnan University of Economics and Law (2722021AJ007, 202151414, 202151408).

- using geographically weighted regression modeling. *Environ Pollut.* (2018) 241:494–503. doi: 10.1016/j.envpol.2018.05.083
- Wang JY, Wang SJ, Li SJ. Examining the spatially varying effects of factors on PM_{2.5} concentrations in Chinese cities using geographically weighted 34 regression modeling. *Environ Pollut.* (2019) 248:792–803. doi: 10.1016/j.envpol.2019.02.081
- Darnley A G. A global geochemical reference network: the foundation for geochemical baselines. *J Geochem Explor.* (1997) 60:1–5. doi: 10.1016/S0375-6742(97)00020-4
- Xuan H, Teng YG, Ni SJ, Wang JS, Zhang CJ. Potential ecological risk assessment on heavy metal in the soil of indexing area based on the geochemical baseline. *Mineral Rock.* (2005) 4: 69–72. doi: 10.19719/j.cnki.1001-6872.2005.04.011
- Teng YG, Ni SJ. *Theory and Practice of Geochemical Baseline*. Beijing: Chemical Industry Press (2007).
- Bauer I, Bor J. Lithogene, geogene und anthropogene Schwermetallgehalte von Lößböden an den Beispielen von Cu, Zn, Ni, Pb, Hg und Cd. *Mainzer Geowiss Mitt.* (1995) 24:47–70.
- Wei CY, Wen HL. Geochemical baselines of heavy metals in the sediments of two large freshwater lakes in China: implications for contamination character and history. *Environ Geochem Health.* (2012) 34:737–48. doi: 10.1007/s10653-012-9492-9

Conflict of Interest: The authors declare that the research was conducted in the absence of any commercial or financial relationships that could be construed as a potential conflict of interest.

Publisher’s Note: All claims expressed in this article are solely those of the authors and do not necessarily represent those of their affiliated organizations, or those of the publisher, the editors and the reviewers. Any product that may be evaluated in this article, or claim that may be made by its manufacturer, is not guaranteed or endorsed by the publisher.

Copyright © 2022 Jin, Kong, Ou, Chen and Li. This is an open-access article distributed under the terms of the Creative Commons Attribution License (CC BY). The use, distribution or reproduction in other forums is permitted, provided the original author(s) and the copyright owner(s) are credited and that the original publication in this journal is cited, in accordance with accepted academic practice. No use, distribution or reproduction is permitted which does not comply with these terms.