


ERRATUM

Open Access



Erratum to: A Bayesian network meta-analysis: Comparing the clinical effectiveness of local corticosteroid injections using different treatment strategies for carpal tunnel syndrome

Po-Cheng Chen¹, Ching-Hui Chuang^{2,7*} , Yu-Kang Tu³, Chyi-Huey Bai⁴, Chieh-Feng Chen^{4,5,6} and Mei-Yun Liaw¹

Erratum

During production of the original article [1], an oversight occurred which resulted in the omission of the Figures files from the published item. The original article has now been updated to include Figs. 1, 2, 3, 4, 5, 6, 7 and 8, as they appear below.

Author details

¹Department of Rehabilitation, Kaohsiung Chang Gung Memorial Hospital, Kaohsiung, Taiwan. ²Department of Nursing, Kaohsiung Chang Gung Memorial Hospital, No.123, Dapi Road, Niasong District, Kaohsiung 83301, Taiwan. ³Institute of Epidemiology and Preventive Medicine, College of Public Health, National Taiwan University, Taipei, Taiwan. ⁴School of Public Health, Taipei Medical University, Taipei, Taiwan. ⁵Division of Plastic Surgery, Department of Surgery, Wan Fang Hospital, Taipei Medical University, Taipei, Taiwan. ⁶Cochrane Taiwan, Taipei Medical University, Taipei, Taiwan. ⁷School of Nursing, Chang Gung University of Science and Technology, Chiayi, Taiwan.

Published online: 22 December 2015

Reference

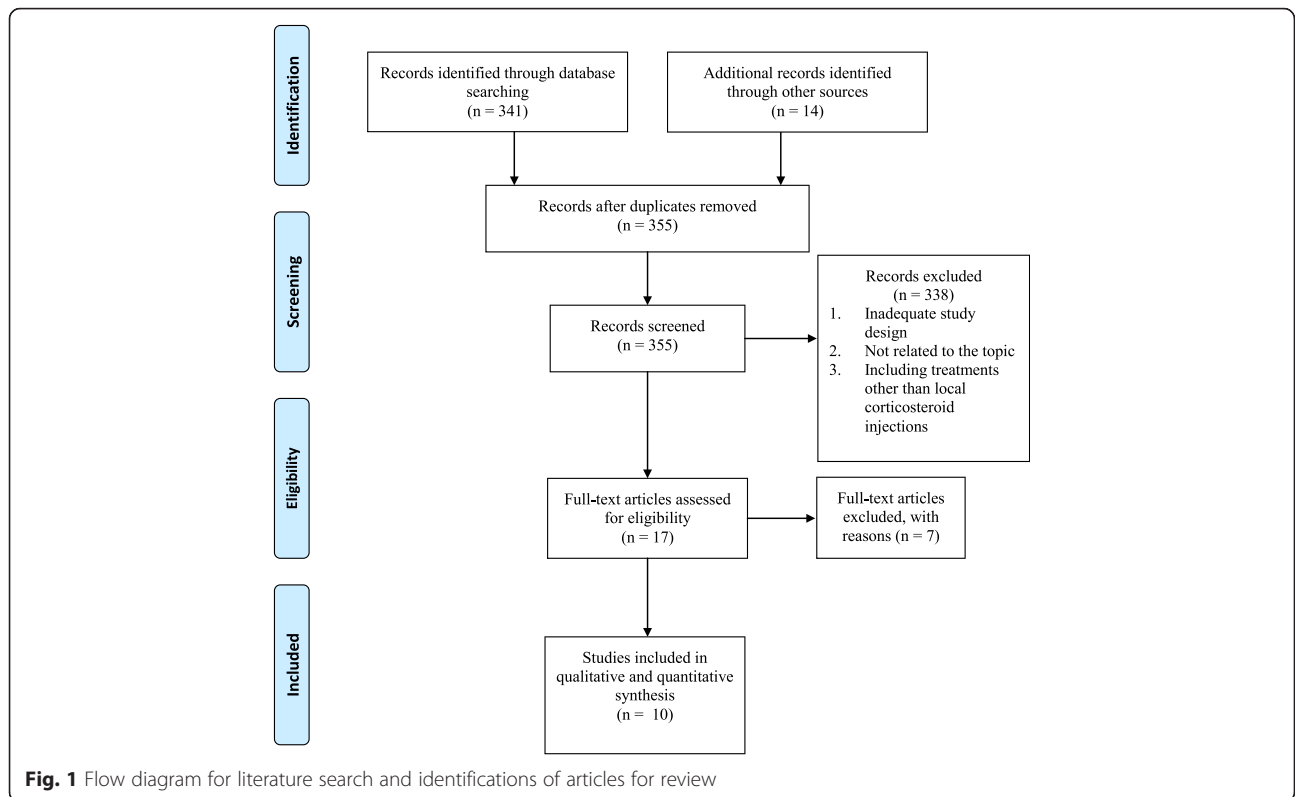
1. Chen PC, Chuang CH, Tu YK, Bai CH, Chen CF, Liaw M. A Bayesian network meta-analysis: comparing the clinical effectiveness of local corticosteroid injections using different treatment strategies for carpal tunnel syndrome. *BMC Musculoskelet Disord*. 2015;16:363. doi:10.1186/s12891-015-0815-8.

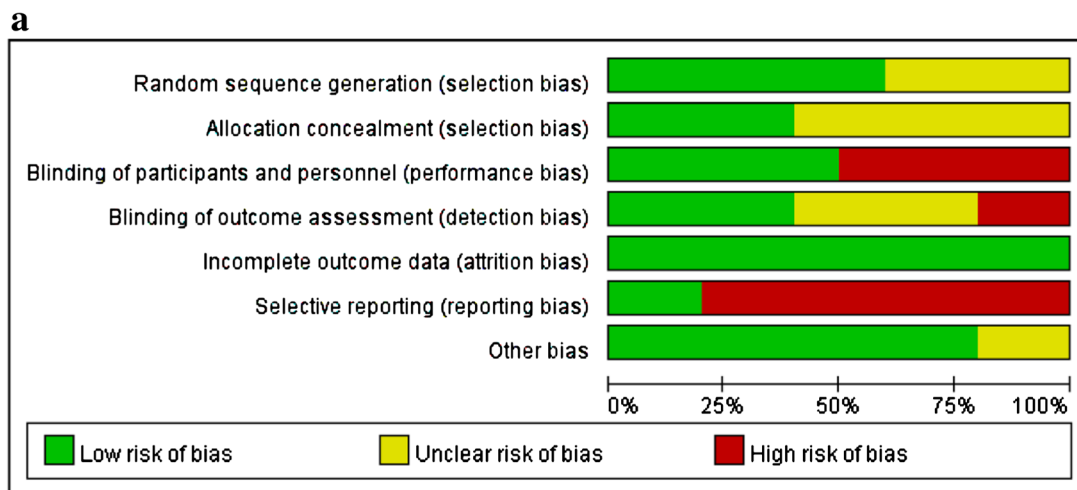
* Correspondence: chinhui@cgmh.org.tw

²Department of Nursing, Kaohsiung Chang Gung Memorial Hospital, No.123, Dapi Road, Niasong District, Kaohsiung 83301, Taiwan

⁷School of Nursing, Chang Gung University of Science and Technology, Chiayi, Taiwan

Full list of author information is available at the end of the article





b

	Random sequence generation (selection bias)	Allocation concealment (selection bias)	Blinding of participants and personnel (performance bias)	Blinding of outcome assessment (detection bias)	Incomplete outcome data (attrition bias)	Selective reporting (reporting bias)	Other bias
Armstrong et al. 2004	+	+	+	+	+	+	?
Atroshi et al. 2013	+	+	+	+	+	-	+
Dammers et al. 1999	+	+	+	+	+	-	+
Habib et al. 2006	?	?	-	-	+	-	+
Karadas et al. 2012	?	?	-	?	+	-	+
Lee et al. 2014	?	?	-	?	+	-	+
Makhlouf et al. 2014	+	?	-	?	+	-	+
O' Gradaigh et al. 2000	?	?	+	-	+	-	?
Peters et al. 2010	+	+	+	+	+	+	+
Ustun et al. 2013	+	?	-	?	+	-	+

Fig. 2 Risk of bias (a) graph and (b) summary: review authors' judgements about each risk of bias item

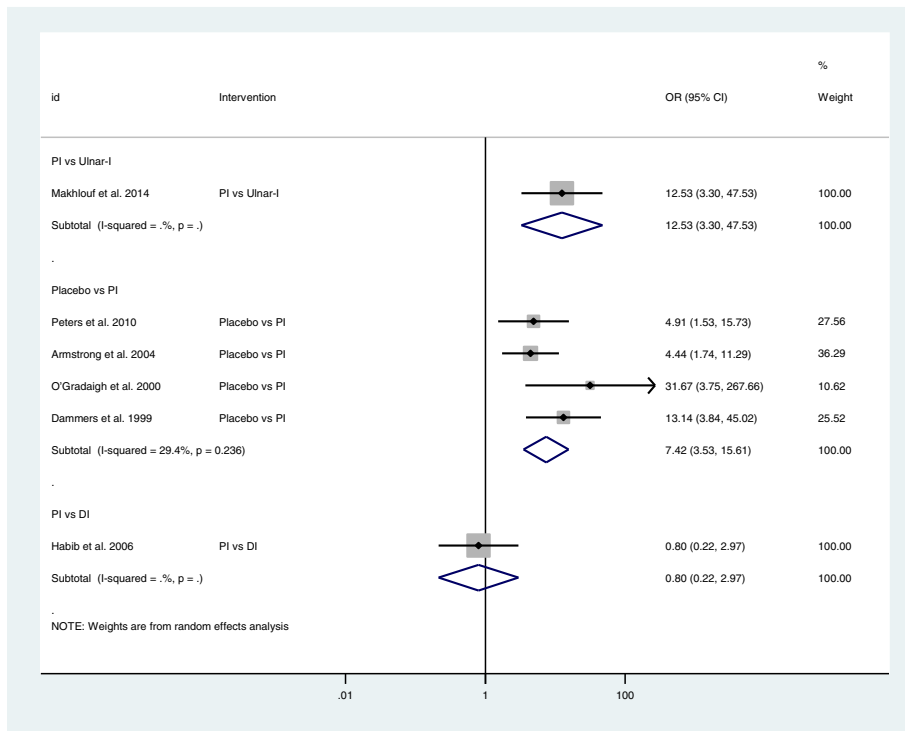


Fig. 3 Forest plot of the standard pair-wise meta-analysis for clinical response of local corticosteroid injections for carpal tunnel syndrome. Abbreviations: OR = odds ratio, CI= confidence interval, DI = distal approach corticosteroid injection, PI = proximal approach corticosteroid injection, Ulnar-I = ultrasound-guided in-plane approach

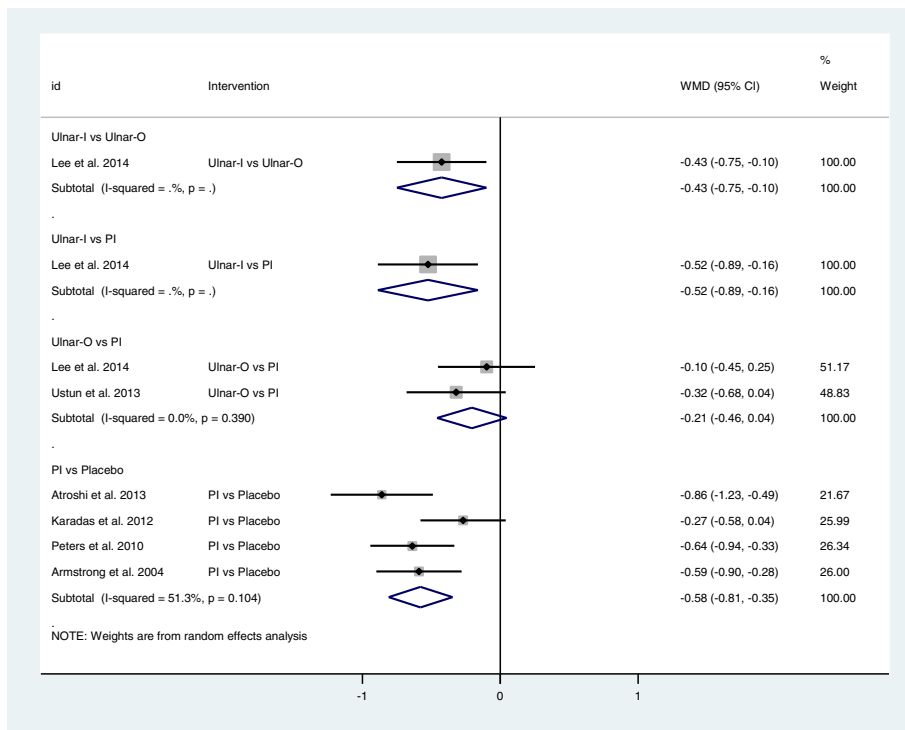


Fig. 4 Forest plot of the standard pair-wise meta-analysis for change in symptom severity scale of local corticosteroid injections for carpal tunnel syndrome. Abbreviations: WMD = weighted mean difference, CI= confidence interval, PI = proximal approach corticosteroid injection, Ulnar-I = ultrasound-guided in-plane injection, Ulnar-O = ultrasound-guided out-plane injection

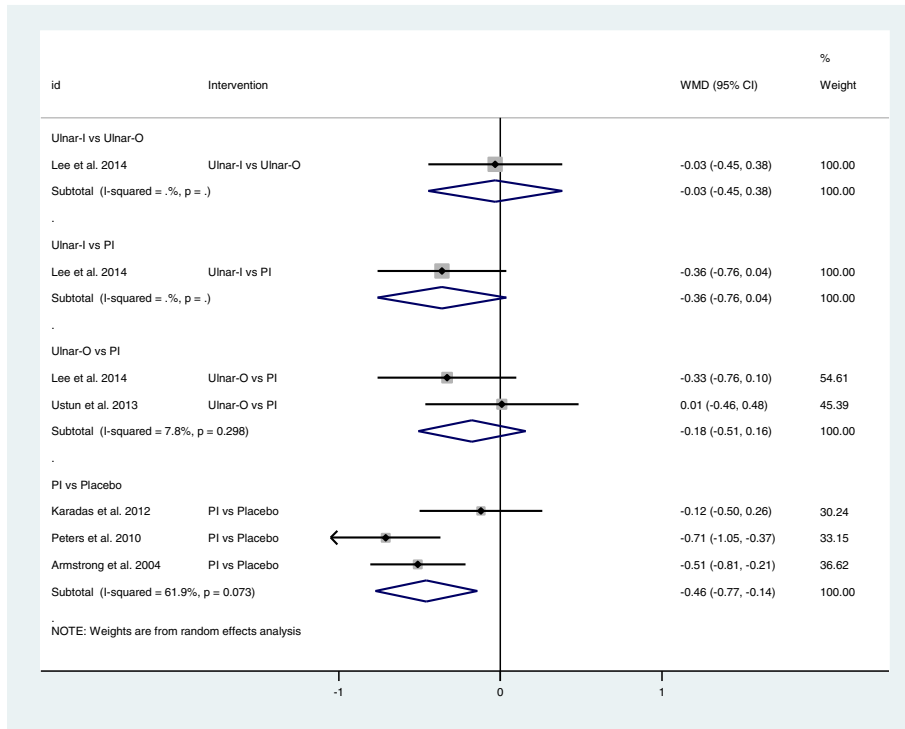


Fig. 5 Forest plot of the standard pair-wise meta-analysis for change in functional status scale of local corticosteroid injections for carpal tunnel syndrome. Abbreviations: WMD = weighted mean difference, CI= confidence interval, PI = proximal approach corticosteroid injection, Ulnar-I = ultrasound-guided in-plane injection, Ulnar-O = ultrasound-guided out-plane injection

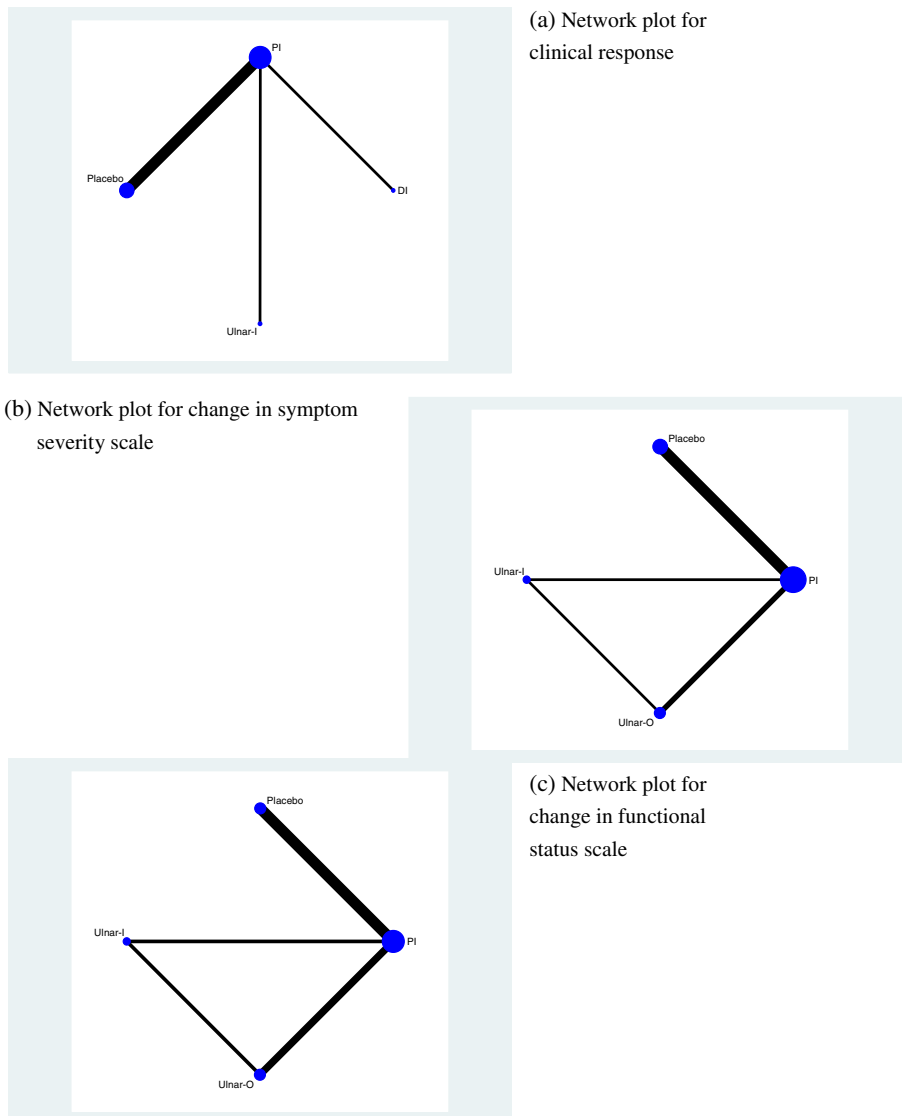
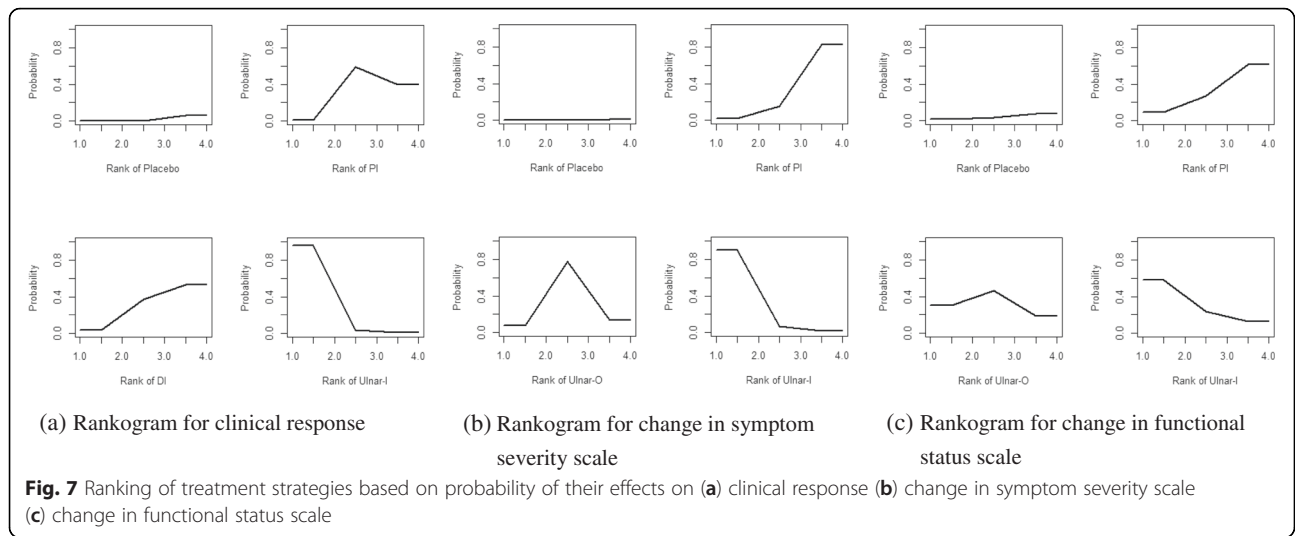


Fig. 6 Network plots of the treatments for (a) clinical response, (b) change in symptom severity scale (c) change in functional status scale



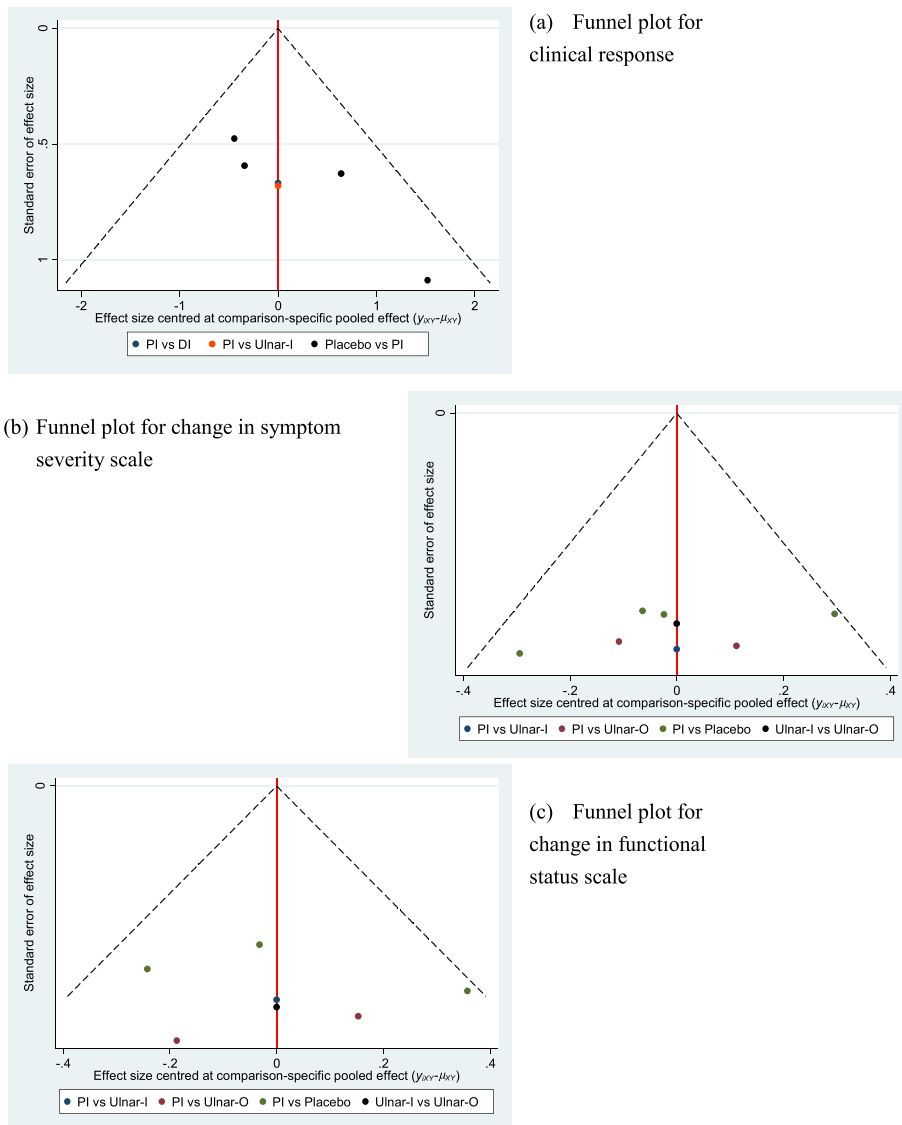


Fig. 8 Comparison-adjusted funnel plots for (a) clinical response (b) change in symptom severity scale (c) change in functional status scale