




In view of a clinical suspicion, the diagnosis can be made with brain evoked response audiometry (BERA).<sup>2,4</sup> In these cases, the hearing loss should be differentiated from lupus dysacusia, characterized by sudden or rapidly progressing neurosensory hypacusis, with reduced response on the audiometry evaluations. Inflammatory tests and the presence of antibodies will help in the differentiation.<sup>5</sup>

There are reports in the literature of partial improvement after early therapy with steroids and vasodilators.<sup>3,4</sup> The drugs used have anti-inflammatory effects and could control the hypersensitivity reaction of the vessels to antimalarials, restoring the blood supply for the inner ear.<sup>3,4</sup> Thus, one must be vigilant regarding any sign or symptom related to hearing changes in patients using these medications, so that the diagnosis can be made early enough to allow for the reversal of the picture. Although rare, HCQ ototoxicity is a severe complication that impairs functional activities and quality of life of the patients and can appear after relatively short periods of use and in low doses. With this study, we aim to alert for the ototoxic potential of the antimalarials and suggest that patients be carefully advised about this complication when they start treatment. We also suggest a periodic audiology assessment of the patients using antimalarials for a prolonged and regular period so that eventual ototoxic changes can be detected early, therefore avoiding possible irreversible damage. □

#### REFERENCES

1. Seçkin U, Ozoran K, İkinciogullari A, Borman P, Bostan EE. Hydroxychloroquine ototoxicity in a patient with rheumatoid arthritis. *Rheumatol Int.* 2000;19:203-4.
2. Figueiredo MC, Atherino CCCT, Monteiro CV, Levy RA. Antimaláricos e Ototoxicidade. *Rev Bras Reumatol.* 2004;44:212-4.
3. Jourde-Chiche N, Mancini J, Dagher N, Taugourdeau S, Thomas G, Brunet C, et al. Antimalarial ototoxicity: an underdiagnosed complication? A study of spontaneous reports to the French Pharmacovigilance Network. *Ann Rheum Dis.* 2012;71:1586.
4. Bortoli R, Santiago M. Chloroquine ototoxicity. *Clin Rheumatol.* 2007;26:1809-10.
5. Cecatto SB, Garcia RID, Costa KS, Anti SMA, Longone E, Rapoport PB. Sensorineural hearing loss in systemic lupus erythematosus: report of three cases. *Rev Bras Otorrinolaringol.* 2004;70:398-403.

Mariana Rita de Novaes Fernandes  ORCID 0000-0003-1359-7187  
 Débora Bergami Rosa Soares  ORCID 0000-0001-7425-9128  
 Chan I Thien  ORCID 0000-0002-3188-959x  
 Sueli Carneiro  ORCID 0000-0001-7515-2365

**How to cite this article:** Fernandes MRN, Soares DBR, Chan IT, Carneiro S. Hydroxychloroquine ototoxicity in a patient with systemic lupus erythematosus. *An Bras Dermatol.* 2018;93(3):474-5.

## CASE LETTERS ▼

### Fixed drug eruption to nimesulide: an exuberant presentation confirmed by patch testing\*

Lidiane Pereira Marques<sup>1</sup>  
 Ana Luiza Castro Fernandes Villarinho<sup>2</sup>  
 Maria das Graças Mota Melo<sup>2</sup>  
 Marília Gabriela Senra Torre<sup>3</sup>

DOI: <http://dx.doi.org/10.1590/abd1806-4841.20187338>

Dear Editor,

Currently, cutaneous adverse drug reactions are a growing problem in which diagnosis can be challenging due to the existence of multiple drugs, diverse pharmacological interactions and symptoms that mimic a large variety of skin diseases. We report a case of a 23-year-old female patient that presented a 3-year history of dysuria, vulvar bleeding and painful oral ulcerations that healed spontaneously in approximately 10 days (Figure 1). The episodes were sporadic, but the symptoms became more exuberant with every relapse, leading to conjunctival hyperemia and eyelid edema. Systemic lupus erythematosus and Behçet's disease were considered. Laboratory tests, including viral serologies, ANF, ESR and ANCA showed normal results and pathergy test was negative.

Although a definite diagnosis was not reached, the patient was started on prednisone 0.5mg/kg/day and azathioprine 150mg/day with partial clinical control. Even though the patient was on immunosuppressant drugs, erythematous macules appeared on the lower limbs, which regressed within a few hours. However, in every recurrence, the lesions extended to the trunk and became more numerous, pruritic, erythematous and violaceous, leaving residual pigmentation (Figure 2). At this moment, we hypothesized fixed drug eruption with cutaneous and mucous involvement. The patient reported occasional use of nimesulide to treat a possible viral infection of the upper respiratory tract.

Received 07 July 2017.

Accepted 26 November 2017.

\* Work conducted at Fundação Oswaldo Cruz (Fiocruz), Rio de Janeiro (RJ), Brazil.

Financial support: None.

Conflict of interests: None.

<sup>1</sup> Dermatology Department, Hospital de Força Aérea do Galeão, Rio de Janeiro (RJ), Brazil.

<sup>2</sup> Occupational Dermatology Department, Occupational Health Studies and Human Ecology Center, Escola Nacional de Saúde Pública Sergio Arouca, Fundação Oswaldo Cruz (Cesteh-Ensp- Fiocruz), Rio de Janeiro (RJ), Brazil.

<sup>3</sup> Emergency Unit, Hospital Copa D'Or, Rio de Janeiro (RJ), Brazil.

MAILING ADDRESS:

Lidiane Pereira Marques

E-mail: lidmarques2@yahoo.com.br

Skin biopsy revealed hypergranulosis, necrosis of keratinocytes, acrosyringium adjacent to the luminal region, and infundibular keratinocytes immediately adjacent to the follicular ducts. It also revealed a mild lymphocytic infiltrate, with few eosinophils and numerous melanophages located around superficial vessels of the papillary dermis, compatible with the hypothesis of drug eruption.

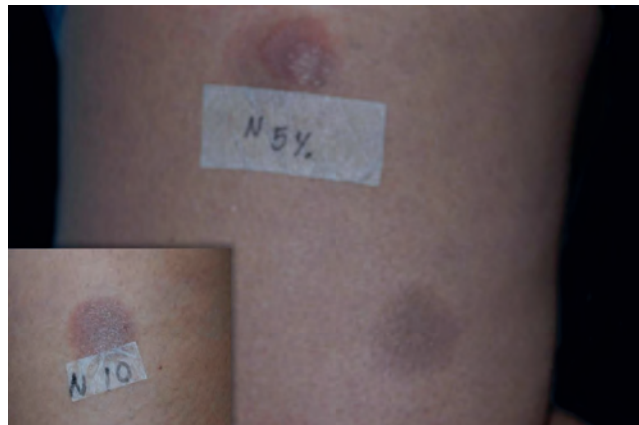
Once the anti-inflammatory was withdrawn, the patient showed significant clinical improvement, which allowed the corticosteroid and azathioprine to be discontinued. In order to confirm the diagnosis, the patient was submitted to patch tests with Brazilian's standard and cosmetic battery, as well as 1%, 5% and 10% nimesulide in vaseline. Since nimesulide is not available for patch tests in Brazil, the drug was manipulated to fit the criteria described above. Both the drug concentrations and the vehicle used were obtained from the literature.<sup>1</sup> The drug was applied on the skin of both the patient's back and on residual lesions on the lower limbs. Among the standard substances used, patch tests were positive for cobalt chloride (+++) and nickel sulfate (++); among the nimesulide concentrations used, patch tests were positive only for those applied on residual lesions at both 5% and 10% (Figure 3).



**FIGURE 1:** Blisters and ulcerations on the tongue and lips



**FIGURE 2:** Oval lesions with a violaceous center and erythematous halo on the lower limb. In detail, residual violaceous lesion on the face



**FIGURE 3:** Patch tests with nimesulide: positive reaction (+++) with nimesulide 5% and residual lesion. In detail, positive reaction (+++) with nimesulide 10%

The diagnosis of fixed drug eruption relies on a thorough medical history as it allows the correlation between clinical symptoms and drug use. The anatomopathological exam is not specific. Although reexposure tests are considered gold-standard for diagnosis, the harmful effects caused can be avoided by performing patch tests.<sup>1-3</sup> Patch test efficiency can be variable, however it does yield good results for cases induced by nonsteroidal anti-inflammatory drugs (NSAIDs).<sup>1,2</sup>

Given that the pathophysiology of fixed drug eruption is most likely related to the persistence of memory T cells on affected regions of the skin, patch tests can be improved by applying the suspected drug on residual lesions.<sup>1,2</sup> False negative tests are most likely caused by a reduced drug absorption through stratum corneum or the inability of the original form of the drug to activate the immune system, which would be accomplished only by systemic metabolism into immunologically active metabolites.<sup>1</sup>




The most common cutaneous side effects of nimesulide are itching and exanthema. However, few case reports of fixed drug eruption associated to nimesulide have been published, and even less showing mucous involvement.<sup>4,5</sup> The most effective intervention is discontinuing the drug. Nimesulide may present crossed-reactions to sulfonamides and to other COX-2 enzyme inhibitors, and thus their use should be avoided or preceded by therapeutic testing.<sup>4</sup>

We report the diagnostic challenges related to the exuberant initial presentation of mucous membranes only. It is also worth mentioning that the symptoms did not improve with the use of immunosuppressant drugs while the intermittent exposure to the NSAID continued. Additionally, we point out that the patch test results were positive only on residual lesions and on the higher concentrations of the drug, indicating the most adequate concentrations and testing areas for the patch test with this medication. □

#### REFERENCES

1. Andrade P, Brinca A, Gonçalves M. Patch testing in fixed drug eruptions—a 20-year review. *Contact Dermatitis*. 2011;65:195-201.
2. Sousa AS, Cardoso JC, Gouveia MP, Gameiro AR, Teixeira VB, Gonçalves M. Fixed drug eruption by etoricoxib confirmed by patch test. *An Bras Dermatol*.

- 2016;91:652-654.
- Rallis E, Stavropoulou E, Paraskevopoulos I. Nimesulide-induced, multifocal, urticarial fixed drug eruption confirmed by oral provocation test. *Indian J Dermatol Venereol Leprol.* 2008;74:403-4.
  - Sarkar R, Kaur C, Kanwar AJ. Extensive fixed drug eruption to nimesulide with cross-sensitivity to sulfonamides in a child. *Pediatr Dermatol.* 2002;19:553-4.
  - Kumaran S, Sandhu K, Saikia UN, Handa S. Nimesulide induced bullous fixed drug eruption of the labial mucosa. *Indian J Dermatol Venereol Leprol.* 2004;70:44-5.

Lidiane Pereira Marques	 ORCID 0000-0002-5308-6261
Ana Luiza Castro Fernandes Villarinho	 ORCID 0000-0002-4049-6114
Maria das Graças Mota Melo	 ORCID 0000-0003-2874-6771
Marília Gabriela Senra Torre	 ORCID 0000-0001-5151-3736

**How to cite this article:** Marques LP, Villarinho ALCF, Melo MGM, Torre MGS. Fixed drug eruption to nimesulide: an exuberant presentation confirmed by patch testing. *An Bras Dermatol.* 2017;93(3):470-2.

## Extradigital glomus tumor mimicking osteomuscular disease\*

DOI: <http://dx.doi.org/10.1590/abd1806-4841.20187559>

Bruno de Castro e Souza<sup>1</sup>  
 Maria Cláudia Alves Luce<sup>1</sup>  
 José Alexandre de Souza Sittart<sup>1</sup>  
 Neusa Yuriko Sakai Valente<sup>1</sup>

Dear Editor,

We present a case of glomus tumor located on the lower third of the right thigh in a patient who presented with pain in the knee region for many years. Investigation for osteomuscular disorders was not successful.

A 50-year-old man sought dermatological consultation reporting an intense, episodic shooting pain in the right knee for 4.5

Received 21 August 2017.

Accepted 13 October 2017.

\* Work conducted at Hospital do Servidor Público Estadual de São Paulo, São Paulo (SP), Brazil.

Financial support: None.

Conflict of interest: None.

<sup>1</sup> Department of Dermatology, Hospital do Servidor Público Estadual de São Paulo, São Paulo (SP), Brazil.

MAILING ADDRESS:

Bruno de Castro e Souza

E-mail: brunocastro1990@hotmail.com

©2018 by Anais Brasileiros de Dermatologia

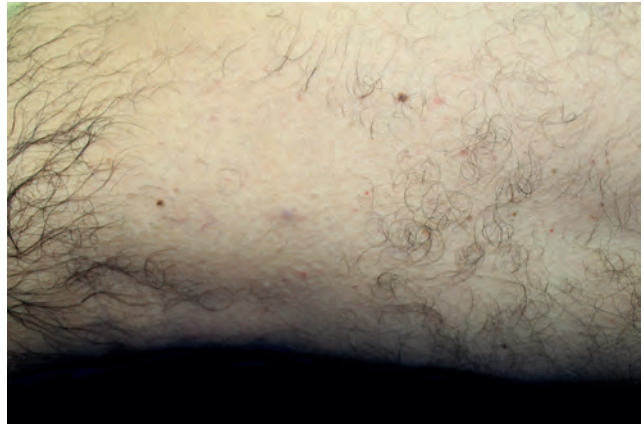


FIGURE 1: Violaceous papule on the left thigh

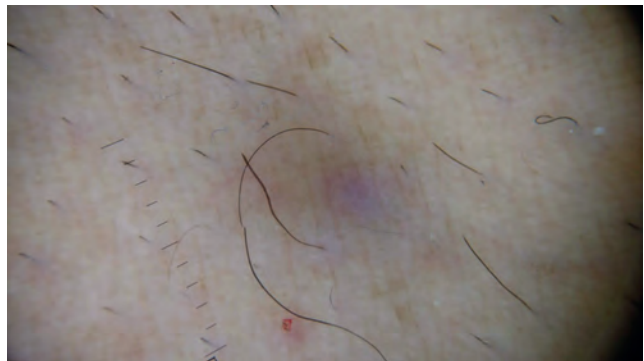


FIGURE 2: Non-contact polarized dermoscopy showing a violaceous, homogeneous, structureless and patternless lesion

years, that worsened with movement or mild touch, including with simple touch of clothes. He denied worsening with cold. He had seen many orthopedists with such complaint and underwent multiple imaging studies, among them 5 nuclear magnetic resonance (NMR) and 3 ultrasounds (US) of the knee and lower third of the right thigh. In only one US, a small subcutaneous nodule on the left thigh was described, however, such finding was not taken into consideration by the physicians then. The tumor was not described in any of the reports from NMR. In view of the undefined diagnosis, he still underwent electroneuromyography, which did not show any abnormalities.

The osteomuscular examination did not reveal edema, heat or crackling of the knee. Dermatological examination revealed a violaceous papule, measuring 4 mm, close to the femur lateral condyle, which triggered a sharp pain upon minimal contact (Figure 1). Non-contact dermoscopic examination with polarized light showed a violaceous, homogeneous lesion with no structures or patterns (Figure 2). Because of the clinical aspect and peculiar symptoms, we raised the hypothesis of extradigital glomus tumor and proceed to surgical excision.

Histopathology revealed a proliferation of blood vessels