


Dry Season *Eimeria* Infection in Dairy Cattle and Sheep in and Around Adama and Bishoftu Towns, Oromia, Ethiopia

Dinka Ayana, Kebene Temesgen, Bersissa Kumsa, Gebayehu Alkadir 

Department of Pathology and Parasitology, College of Veterinary Medicine and Agriculture, Addis Ababa University, Bishoftu, Ethiopia

Correspondence: Dinka Ayana, Email dinka_ayana@yahoo.com; dinka.ayana@aau.edu.et

Introduction: *Eimeria* infection is one of the protozoal diseases of animals caused by various species of *Eimeria* (intracellular parasite) and causes reduced productivity and mortality in ruminants, especially in young ones. Despite the fact that the disease is one of the leading causes of economic losses, there is little information in Ethiopia on the occurrence of the infection in cattle and sheep.

Methods: A cross-sectional study was conducted from December 2021 to April 2022 in and around Adama and Bishoftu towns with the objectives to estimate the prevalence of *Eimeria* infection; identify circulating *Eimeria* oocysts, the intensity/burden of infection and associated risk factors of *Eimeria* infection in cattle and sheep. A total of 384 randomly selected (265 cattle and 119 sheep) fecal samples were collected from the rectum and examined by flotation technique using sheather's sugar solution to detect the oocysts of *Eimeria*. A 2.5% potassium dichromate solution was added to the positive fecal samples for sporulation of the oocysts.

Results and discussion: The overall prevalence of 48.95% *Eimeria* infection was recorded during the study. 45.0% and 58% prevalence of the infection was registered in cattle and sheep, respectively. There was a statistically significant difference ($P < 0.05$) in *Eimeria* infection between the study animal species, age of the animals, breed, farm hygiene and management system. However, there was no significant difference in *Eimeria* infection ($P > 0.05$) in sex, body condition of the animals and fecal consistency. The maximum oocysts per gram of feces was found to be 10,000. *Eimeria* infection is of great importance to livestock producers and requires serious control and prevention initiatives.

Keywords: Adama, Bishoftu, cattle, sheep, *Eimeria*, prevalence, risk factors

Introduction

Ethiopia is home to the greatest livestock population in Africa, with an estimated about 65.35 million cattle, 39.89 million sheep and 50.50 million goats. Local breeds account for 97.76% of the overall cattle population, with hybrid and exotic types accounting for the remainder. Almost all of the sheep and goats (99.56% and 99.88%, respectively) are indigenous.¹⁹ The livestock sector makes a significant contribution to Ethiopia's national economy and the livelihoods of many Ethiopians and it continues to promise to rally behind the country's economic progress.⁶⁵ Livestock contributes to asset, social, cultural and environmental values, as well as generating revenue for farmers, creating jobs, maintaining food security and providing services.^{36,65}

Despite possessing the world's largest livestock population, livestock diseases continue to be a serious constraint on productivity and production, resulting in losses for Ethiopian dairy farmers.⁵⁷ Pneumonia and diarrhea are the most common illness concerns among newborn calves in the area. *Rotavirus*, *Coronavirus*, *E. coli*, *Salmonella* species and protozoan parasites: *Eimeria* and *Cryptosporidium*, are the most common causes of infections related to calf diarrhea.⁶⁴

Eimeria species oocysts are found in small amounts in the feces of healthy sheep of all ages. When susceptible animals are exposed to pathogenic species, disease outbreaks, also known as coccidiosis, occur. The intensity of the symptoms is determined by the magnitude of the infectious dosage and the host's sensitivity.⁵⁵ In calves, Coccidiosis has been identified as a major cause of diarrhea.^{16,61,62,66}

Eimeria infection is one of the protozoal diseases of animals caused by various species of *Eimeria* (intracellular parasite) and causes reduced productivity and mortality in ruminants, especially in young ones. The disease affects cattle, sheep, goats and other domestic ruminants and is an economically significant disease.²² Coccidiosis is a pathogenic intestinal disease caused by various *Eimeria* species belonging Protozoa of the phylum Apicomplexa, family *Eimeriidae* and genus *Eimeria*.^{15,20,39}

Coccidiosis affects cattle of all ages, but it is more prevalent and serious in young animals. They cause significant financial losses to the cattle industry because of death and morbidity in young animals.²⁶ Adult animals are usually asymptomatic, though they can serve as a reservoir for younger animals.⁴² Cattle of all ages can become infected, but symptomatic *Eimeriosis* is most common in young animals.⁵¹ The disease is spread through the consumption of contaminated food and water and symptoms include diarrhea with mucus and blood, lack of appetite, weight loss, anemia, fatigue, wool breaking and eventually death of the animal.⁴⁰

The infections occur in acute, subacute and chronic forms.¹⁴ Clinical Coccidiosis in cattle is mostly determined by parameters, such as *Eimeria* species, age of the diseased animal, number of oocysts consumed, presence of concurrent infections and management approaches. Infection risks are increased by overcrowding and a lack of sanitation²⁰. Since oocysts build up in the environment of confined animals with poor hygiene in the calf pens, *Eimeria* infections are more common in confined animals than those on pastures. Due to the immunosuppression that inadequate diet and overcrowding create, the disease's prevalence rises.⁴⁷ Until recently, more than twelve distinct species of *Eimeria* have been identified in cattle, among which *E. bovis* and *E. zuernii* are highly pathogenic, causing mortality and morbidity.⁵⁸

The genus *Eimeria* causes Coccidiosis in sheep; the majority of the animals have coccidia, but no clinical indications. Subclinical Coccidiosis is a type of Coccidiosis that causes significant economic losses due to weight loss, increased susceptibility to certain infections and inefficient feeding. Coccidiosis results in significant financial losses due to treatment expenditures, growth reductions and high mortality.⁷ Only *E. ovinoidalis* and *E. crandallis*, of the several species capable of infecting sheep, cause clinical symptomatology of *Eimeriosis*; there is minimal evidence that other species are harmful.⁵⁶

Despite the fact that the disease is one of the leading causes of economic losses, there is little information in Ethiopia on the occurrence of the infection in cattle and sheep. There are no comprehensive data on the prevalence and risk factors of *Eimeria* infection in dairy cattle and sheep in the study areas; additionally, there is no record of *Eimeria* infection and prevalence in different breeds, age, sex and management system or agro ecology in both cattle and sheep in the study areas. Therefore, this study was initiated to estimate the prevalence of *Eimeria* infection, identify *Eimeria* species and associated risk factors and to estimate the intensity of *Eimeria* infection in Cattle and Sheep.

Materials and Methods

Description of Study Areas

The study was conducted in Adama and Bishoftu towns and their surroundings, both of which are found in Oromia region, central Ethiopia.

The geographical location of Bishoftu town (Ada'a district) is 9°N latitude and 40°E longitudes, 47 km South-East of Addis Ababa, at an elevation of 1850 meter above sea level. A bimodal rainfall pattern exists in the area, with a short rainy season from March to May and a longer wet season from June to September. It has an annual rainfall of 866 mm of which 84% is in the long rainy season and the remaining in the short rainy season. The dry season extends from October to February. The area's average annual maximum and lowest temperatures are 26°C and 14°C, respectively, with a 61.3% relative humidity.⁴ The population of livestock on the basis of species are 160,697 cattle; 22,181 sheep; 37,510 goats; 1660 equines and 191,380 poultry¹⁷ (Figure 1).

The second study area was Adama, and it is located 95 km South Eastern from Addis Ababa at 39.17°N and 8.33°E with an altitude of 1770 meter above sea level, latitude 8.31°N and 39.16°E longitude. Adama is situated in the well-known East African rift valley. It has annual rainfall and temperatures ranging from 400 mm to 800 mm and 13.9°C to 27.7°C, respectively.⁴⁴ The livestock population on the basis of species are 70, 662 cattle; 36, 142 sheep; 42, 968 goats; 31, 905 equines; 42 camels and 195, 155 poultry³(Figure 1).

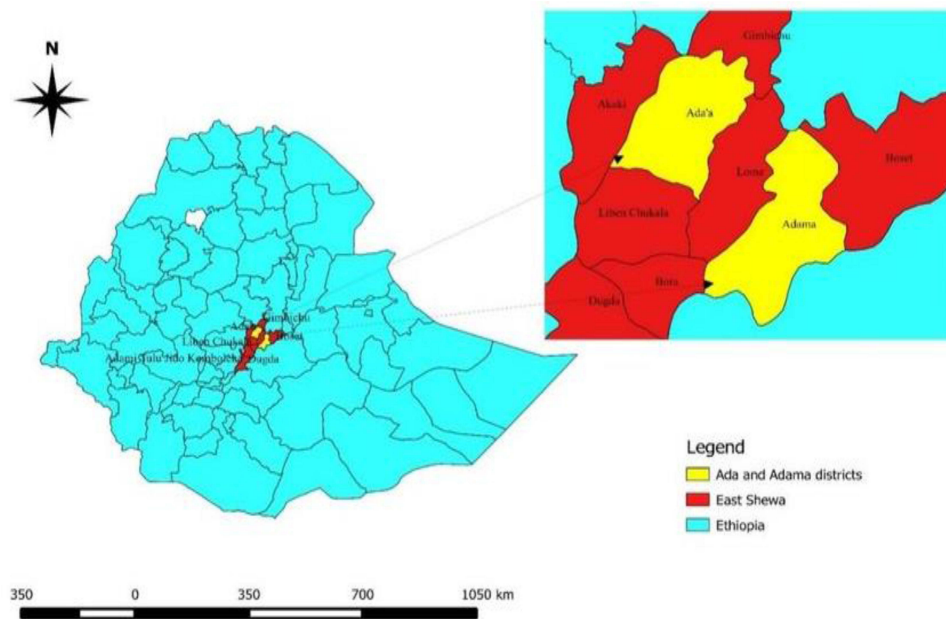


Figure 1 Map of Ethiopia showing location of the study areas.

Note: Reproduced from Woldemariam T, Mohammed T, Mamo G, Ameni G. An abattoir based study of Bovine Tuberculosis in Adama and Bishoftu Abattoirs, Central Ethiopia. *J Sci Dev.* 2018;6:1.⁶⁵

Study Animals

The study animals were cattle and sheep, including both sexes and breeds (exotic, cross and local breeds). The animals that were examined were divided into two age groups: group I (young) and group II (adult);²⁷ which was determined by asking the animal owners and records in the farms. The body conditions of the examined animals were also categorized into three: good, medium and poor. It is based on different body structure, visible bone parts and fat deposit.¹²

Ethics Approval

The approval on animal handling ethics was received before the commencement of the study. All the animal handling and sample collection methods were performed in accordance with the Addis Ababa University College of Veterinary Medicine Research Ethics (AAU-CVMA-REC) and animal welfare guide for the care and use of animals (Ref. No. 01225/2021).

Study Design

A cross-sectional study design was used to determine the prevalence and associated risk factors of *Eimeria* infection in cattle and sheep from December 2021 to April 2022 on the selected dairy farms and veterinary clinics in the study areas.

Sampling Technique and Sample Size Determination

The sampling method employed for the study involving dairy farms was a purposive sampling technique based on the willingness of farm owners. Systematic random sampling technique was used for animals to be sampled from veterinary clinics. The sample size required for this study was calculated based on sample size determination method for systematic random sampling of infinite population after⁵⁹ as follows:

$$n = \frac{1.96^2 P_{exp} (1 - P_{exp})}{d^2}$$

Where

n = required sample size

P_{exp} = expected prevalence

d = desired absolute precision

1.962 = z-value for 95% confidence interval

Since there was no previous study conducted in the study areas, the expected prevalence was 50%. Accordingly, with 5% absolute precision at 95% confidence level, as a result, the required sample size for the study was found to be 384. Since the number of sheep coming to veterinary clinics was few compared to cattle, we collected fecal samples from 265 cattle and 119 sheep.

Sample Collection and Transportation

Fresh fecal samples were collected from the rectum of the animals using a rectal glove. Then, the collected samples were placed in labeled clean plastic containers (universal bottles) and preserved in 2% potassium dichromate or 10% formalin then transported in icebox to CVMA parasitology laboratory, for further processing on the same day of collection. The sample left unprocessed on the first day was stored in the refrigerator at 4°C to be processed in the following days. At the time of sampling, the species, breed, sex, age, fecal consistency, body condition, study site/farm, agro ecology, management system and farm hygiene were recorded on a data recording format. The fecal consistency was determined by physical observation of the feces during sample collection. Hygiene of the dairy farms was assessed based on the frequency of disposal of feces, hygienic status of the dairy cattle and calves, and the frequency at which the farms were cleaned.

Sample Processing

Fecal flotation technique was conducted by using Sheather's sugar solution to detect the oocysts of *Eimeria* as depicted by.²⁸ The coprological procedure is described as follows: taking three grams of faeces from each animal and mix with 42 mL of floatation fluid by using pistil and mortar thoroughly, then the suspension was poured through tea strainer. Then, the suspension was poured into the test tube, and the test tube was placed in a rack and the test tube with the suspension was left a convex meniscus at the top of the test tube and cover slip was carefully placed at the top of the tube and let it stand for 15 minutes. Finally, the cover slip was removed with the drop of fluid adhered to it, and immediately the cover slip was put on microscopic slide and examined by 40x magnification to identify *Eimeria* oocysts.

Estimation of Intensity of *Eimeria* Infection (Oocyst per Gram of Feces/OPG)

Quantitative fecal examination was performed by floatation technique to determine the number of oocysts per gram of feces (OPG) using Mac master technique. Samples with more than 400 OPG were mixed thoroughly with 2.5% potassium dichromate solution and allowed to sporulate for 10–14 days at room temperature to allow sporulation of *Eimeria* oocyst and used for oocyst identification. After sporulation, the fecal mixture was processed using the simple test tube flotation procedure using Sheather's sugar solution with specific gravity of (1.18) to recover the oocysts. The *Eimeria* oocyst were identified based on the morphology of oocysts and sporocysts (shape, color, micropyle and its cap, presence or absence of residual, polar granule). The size of the oocysts was measured using a calibrated microscope under a 40x objective.²⁵

Data Analysis

Data obtained from all the study were coded and stored in a Microsoft excel spread sheet program v2010 (Microsoft, Redmond WA, USA) and analyzed using IBM SPSS version 20 computer Statistical software for windows. For every data, the prevalence was estimated by dividing the number of infected individual animal by the number of animals sampled and multiplying by 100. Pearson's chi-square (χ^2) was used to assess the relationship between *Eimeria* infection and the hypothesized risk factors. P-value less than 0.05 (at 5% level of significance) was considered as significant and final results were displayed in the form of tables and figures.

Results

Prevalence and Risk Factors of *Eimeria* Infection in Cattle and Sheep

Of the total 384 animals examined (48.9%) were found to be infected with *Eimeria*. The prevalence of *Eimeria* infection in cattle and sheep was 45% and 58%, respectively. There was a statistically significant ($P = 0.003$) difference in *Eimeria* infection between study animal species (cattle and sheep). There was also a significant difference in *Eimeria* infection between the study sites/farms ($P = 0.000$) and between agro ecologies ($P = 0.000$). Similarly, there was a significant difference ($P = 0.000$) in *Eimeria* infection among the breeds of cattle with higher prevalence in local cattle (57.4%) than Exotic cattle (49.9%) and cross-bred cattle (18.2%) (Table 1).

Among the 384 animals examined, 118 (47.4%) and 70 (51.8%) of female and male animals, were positive with *Eimeria* infections. Accordingly, the prevalence of *Eimeria* infection was higher in males than in females; however, the difference was not statistically significant ($P = 0.417$). The age of the animal was strongly associated with the infection ($P = 0.05$). Similarly, there was a statistically significant difference in *Eimeria* infection between breeds of the animals, farm hygiene, between management systems, and between agro ecologies of the study areas.

The intensity of infection, as measured by the number of OPGs in feces, is an important factor that describes the severity of the infection in a particular animal. The mean oocyst per gram of feces ranges from zero to 10,000 in both study animals (Figures 2 and 3).

Table 1 Overall Prevalence of *Eimeria* Infection with Respect to Risk Factors

Risk Factor		No. Examined	No. Positive (%)	χ^2	p-value
Species	Bovine	265	119(45.0%)	11.574	0.003*
	Ovine	119	69(58.0%)		
Sex	Female	249	118(47.4%)	18.603	0.417
	Male	135	70(51.8%)		
Age	Adult	267	127(47.5%)	5.905	0.05
	Young	117	61(52.1%)		
Breed	Local	202	116(57.4%)	30.535	0.000*
	Cross	11	2(18.2%)		
	Exotic	171	70(40.9%)		
Body condition	Good	291	137(47.1%)	2.223	0.695
	Medium	66	36(54.5%)		
	Poor	27	15(55.6%)		
Fecal consistency	Dry	242	119(49.2%)	5.250	0.512
	Moist	118	57(48.3%)		
	Diarrheic	24	12(50.0%)		
Study site and farms	Adama farm	7	3(42.9%)	48.388	0.000*
	Adama clinic	89	44(49.4%)		
	ARPC block 1	42	20(47.6%)		
	ARPC block 2	21	9(42.9%)		
	EMDIDI	126	66(52.4%)		
	Tasew farm	24	3(12.5%)		
	VTH	75	43(57.3%)		
Farm hygiene	Good	199	92(46.2%)	11.895	0.018
	Poor	21	9(42.9%)		
Agroecology	Low land	96	47(49.0%)	30.535	0.000*
	Mid land	288	141(48.9%)		
Management system	Intensive	224	104(46.4%)	9.290	0.05
	Extensive	135	70(51.9%)		
	Semi-intensive	25	14(56.0%)		

Note: *Statistically significant difference.

Abbreviations: ARPC, Animal Research and Production Center; EMIDIDI, Ethiopian Meat and Dairy Industry and Development Institute; VTH, Veterinary Teaching Hospital.

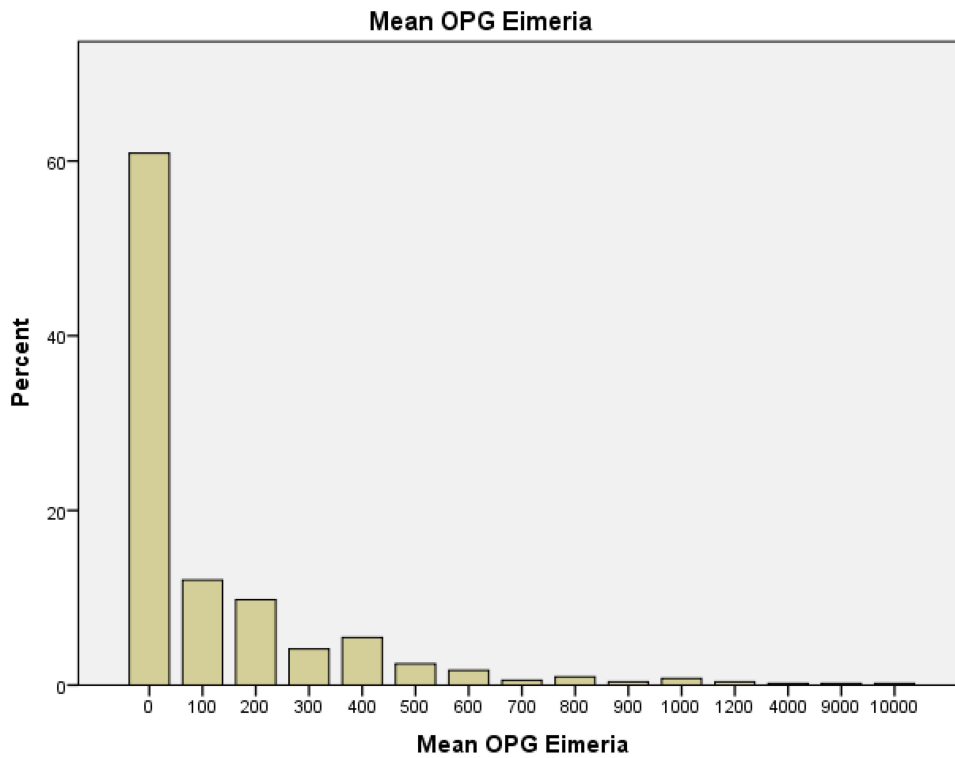


Figure 2 Mean oocysts per gram of feces (OPG) of *Eimeria* infection in cattle.

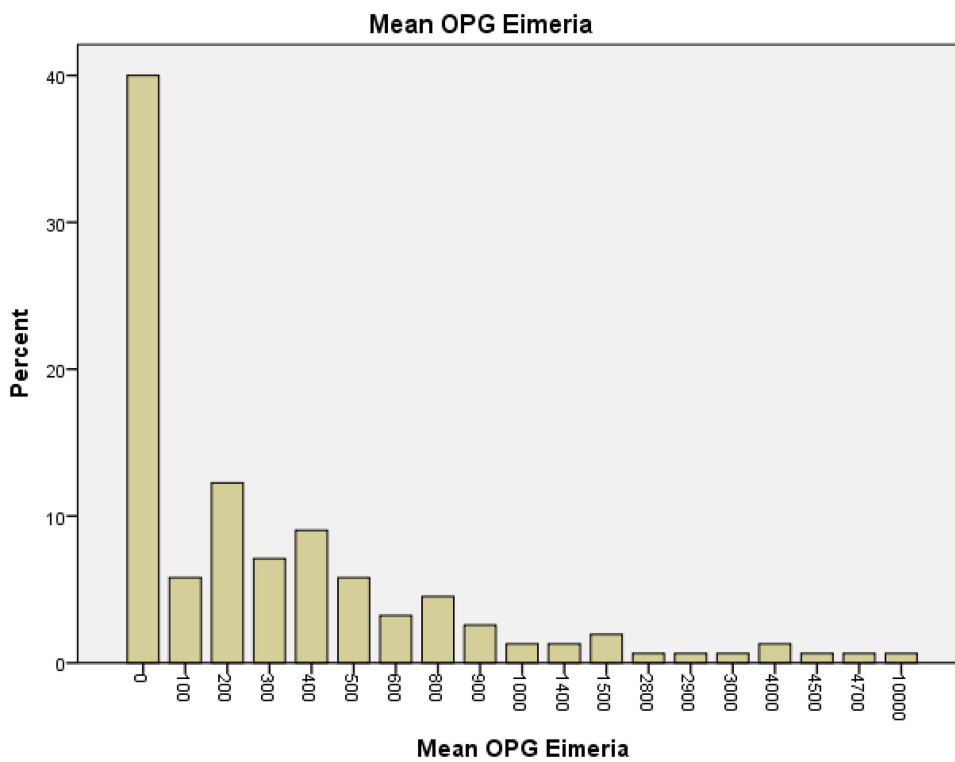


Figure 3 Mean oocysts per gram of feces (OPG) of *Eimeria* infection in sheep.

Table 2 *Eimeria* Species Identified from Sheep and Cattle Based on Oocyst Morphology

Serial No.	<i>Eimeria</i> Species	Shape	Size (µm)	Micropyle	Sheep (n = 69)	Cattle (n = 119)
					Number of Positive Samples (%)	Number of Positive Samples (%)
1	<i>E. ovinoidalis</i>	Ovoidal	23x16	Present	20(21.7)	-
2	<i>E. ahasta</i>	Ellipsoidal	33.4x22.6	Present	12(13)	-
3	<i>E. parva</i>	Spherical	16.5x14.1	Absent	13(14)	-
4	<i>E. crandallis</i>	Spherical	23x19	Present	18(19.6)	-
5	<i>E. granulosa</i>	Urn -shaped	29.4x20.9	Present	11(11.9)	-
6	<i>E. hawkinsi</i>	Subspherical	20x15	Present	3(3.3)	-
7	<i>E. intericata</i>	Ellipsoidal	47x32	Present	2(2.2)	-
8	<i>E. pallida</i>	Ellipsoidal	12x8	Absent	3(3.3)	-
	Mixed infections				10(10.9)	
1	<i>E. bovis</i>	Ovoidal	25.4x17.2	Present	-	37(17.5)
2	<i>E. zurni</i>	Spherical	18.8x17.9	Absent	-	29(13.7)
3	<i>E. alabamensis</i>	Subspherical	20.8x13.6	Absent	-	23(10.9)
4	<i>E. ellipsoidal</i>	Ellipsoidal	17.2x12.4	Absent	-	21(9.9)
5	<i>E. subspherica</i>	Subspherical	11.7x11	Absent	-	33(15.6)
6	<i>E. auburnensis</i>	Ellipsoidal to tapering	33.9x20	Present	-	25(11.8)
7	<i>E. wyomingensis</i>	Ellipsoidal	29.2x24.1	Present	-	30(14.2)
	Mixed infections					13(6.2)

Species Identification of *Eimeria* in Cattle and Sheep

Eimeria species was identified based on the morphological features of the oocysts ([Annex 1](#)) as per the guidelines provided by.³⁷ Accordingly, eight *Eimeria* species were identified in sheep. The three dominant species were *Eimeria ovinoidalis* (21.7%), *Eimeria crandallis* (19.6%) and *Eimeria parva* (14%). While seven *Eimeria* species were identified in cattle, *Eimeria bovis* (17.5%), *Eimeria subspherica* (15.6%) and *Eimeria wyomingensis* (14.2%) were the dominant species ([Table 2](#)).

Discussion

Eimeria spp. infections are most commonly found in the subclinical stage, without causing clinical diarrhea. Coccidiosis causes economic losses as a result of damage to the intestinal lining resulting in reduced feed consumption, malnutrition, poor growth and weight loss, even though the animals appear healthy.²⁸

Various prevalences of *Eimeria* infection in cattle and sheep have been reported in different parts of the world. The prevalence of cattle *Eimeria* infection recorded in Ethiopia was within the range of 5.99% and 72.8%.^{24,25} In Poland, the prevalence of *Eimeria* species in cattle was estimated to range from 17.9% to 93%,^{34,48,49} between 50% and 52% in South Africa;⁴¹ 29% of infection was reported in Iraq,⁶ 75.5% in Colombia,³⁷ 11.97% in India (Assam),²⁰ 29–52% in South Africa, 25.9% in Korea,⁴⁵ 46.7% in Egypt.³⁸

The current prevalence of cattle *Eimeria* infection (45.0%) was lower than the previous reports of 55.0% in Akaki Kality Subcity of Addis Ababa, Ethiopia;¹⁰ 68.1% in Addis Ababa and Bishoftu, Ethiopia¹ and 72.8% in Mekelle, Ethiopia.²⁵ Our current finding was also lower than the reports from different countries including 75.5% prevalence from Colombia³⁷ 93% reported in Poland⁴⁸ and 50% and 52% in South Africa.⁴¹ However, the present prevalence of cattle *Eimeria* infection is higher than 5.99%, 22.7% and 31.9% reported, respectively, by.^{8,21,24} Previous prevalence reports in Ethiopia were also higher than 29% prevalence which was reported in Iraq;^{6,33} 11.97% in India;²⁰ 25.9% in Korea^{38,45} and 46.7% from Egypt.³⁸

Various reports on the prevalence of *Eimeria* in sheep were also reported in different parts of Ethiopia. For instance, 66.8% in Bishoftu and central Ethiopia;¹⁰ 22.4%³⁵ in Addis Zemen, Gondar, Ethiopia and 62.7% in and around

Haramaya, Eastern Hararghe, Ethiopia.⁴³ In cattle and sheep; 57.3% *Eimeria* infection was also reported from Akaki Kaliti Subcity of Addis Ababa by.¹⁰

The present prevalence of sheep *Eimeria* infection (58.0%) was lower than 66.8% prevalence in Bishoftu and central Ethiopia^{10,11} and 62.7% in and around Haramaya, Eastern Hararghe, Ethiopia,^{43,46} 68.3% prevalence reported from Brazil,⁵⁶ 97.5% in Tanzania,^{31,32} 91.5% in Western Iran,³⁰ 92.9% in Northeastern China.² However, the present prevalence of sheep *Eimeria* infection was higher than the one reported by^{35,60} (22.4%) in Addis Zemen, Gondar, Ethiopia and also higher than the report from India (12.7%).⁵⁴

The present prevalence of both cattle and sheep *Eimeria* infection (48.95%) was lower than 57.3% prevalence recorded in Akaki Kaliti Subcity of Addis Ababa.¹⁰ The number of ingested oocysts, the existence of a concurrent microbial infection, weather conditions and seasons, management, the level of immunity and age, techniques of diagnostics and agro-ecology could all have a role in the differences in prevalence estimates.⁵⁴

The prevalence of *Eimeria* infection in the present study in the males (51.8%) was slightly higher than in females (47.4%). However, the sex of the animals was not significantly associated ($P > 0.05$) with the infection by coccidian. This is in agreement with the finding of^{8,10}. There was no evidence of a significant association between sex and the outcome. The lack of a significant association between infection and animal sex could indicate that *Eimeria* infection affects both male and female animals relatively equally.

There was a statistically significant difference in *Eimeria* infection between the age categories with higher prevalence in the young (52.1%) than the adult (47.5%). This is in agreement with the findings of other researchers who reported a strong significant association between the age and the infection^{1,9,10,63}. This justifies that young animals are more susceptible to infection than older animals as a result of their lower immunity. If the habitat is heavily contaminated, repeated oocyst uptake could explain the findings, resulting in low frequency from mature animals who would otherwise have developed immunity. Age is a major risk factor in the spread of coccidiosis; morbidity and the risk of infection are greater in young animals. Similarly, there was a significant difference in *Eimeria* infection among the breeds of cattle with higher prevalence in local cattle (57.4%) than Exotic cattle (49.9%) and cross-bred cattle (18.2%). This could be associated with the low attention given to local cattle in terms of feeding and other management activities compared to the exotic and cross-bred cattle because of the fact that local cattle have lower production potential than the improved breeds.

The prevalence of the present study in young (52.1%) is lower than that of previous prevalence (68.1%) which was overall prevalence of the research conducted in both Addis Ababa (highland) and Bishoftu (midland) by¹ and higher than 22.7% and 31.9% previous prevalence reported in Ethiopia by²¹ in Dire Dawa, Eastern Ethiopia and⁸ in Kombolcha town, which is located in the North East of Ethiopia in Amhara regional state, respectively. This variation could be due to the differences in climatic conditions of the various study areas.

There was no statistically significant difference in the prevalence of *Eimeria* between fecal consistency. This was not in agreement with the finding by¹³. The reason behind could be due to the fact that Coccidiosis mostly occurs in a subclinical form and the thickness of the feces may be related to diet or other infections.

There was a significant difference in *Eimeria* infection between the dairy farms and agro ecologies where samples were collected. This is most likely due to Bishoftu's increased rainfall and relative humidity, which provides a far better climatic environment for survival, sporulation and development of the oocysts in Bishoftu than Adama. This observation is in agreement with the work of,^{1,53} who reported higher infection rates of *Eimeria* in cattle in high rainfall zones in Addis Ababa and Mexico, respectively.

Eimeria infection was strongly associated with farm hygiene. High prevalence was recorded in good farm than poor farms. Normally, there is more *Eimeria* infection in poor farms than good farms. The current findings disagree with that of^{23,50,52} who reported Coccidiosis in cattle is more common in confined herds than animals kept on pastures. This could be related to sampling errors where the samples for the study were not proportional. In the present study, a strong association was also found between *Eimeria* infection and animal feeding systems. Coccidiosis was also more common in stall fed animals than in free pasture grazing animals.

The *Eimeria* infection and management system also have a significant association. Previous studies reported 92.7% prevalence of *Eimeria* species oocysts in an intensive system,¹ 78.3% in a semi-intensive system,²⁹ and in extensive

system 58.9%⁵) and 90%.⁵⁶ In extensive systems, limiting factors, such as temperature and management, as well as genetic and immunologic states of the animal, can promote coccidia dissemination and enhance prevalence.¹⁸

Conclusion and Recommendations

The current study found a high prevalence of *Eimeria* infection in cattle and sheep, with an overall prevalence of 48.95%, indicating that *Eimeria* infection is still prevalent enough to affect domestic ruminant production in the study areas, causing mortality, morbidity, and body condition losses in these animals. This result also indicates that young animals are the most impacted, and that the parasite causes clinical diarrhea in young animals more frequently. There was a significant difference in *Eimeria* infection in the different agro ecologies. However, no difference was found in *Eimeria* infection between sex, body condition and fecal consistency.

Therefore, further research is needed to fully understand the economic impact of subclinical infection by *Eimeria* species in cattle and sheep. More epidemiological investigation involving both the dry and rainy seasons is also required to see the seasonal oocyst shedding of the parasite. Similarly, awareness creation of farmers, dairy personnel and veterinary clinic workers about the occurrence of the parasites is very important.

Disclosure

The authors report no conflicts of interest in this work.

References

1. Abebe R, Wossene A, Kumsa B. Epidemiology of *Eimeria* infections in calves in Addis-Ababa and Debre-Zeit dairy farms, Ethiopia. *Int J Appl Res Vet Med*. 2008;6:24–30.
2. Abo-Shehada MN, Abo-Farieha HA. Prevalence of *Eimeria* species among goats in northern Jordan. *Small Rumin Res*. 2003;49(2):109–113. doi:10.1016/S0921-4488(03)00078-6
3. ADAO. Adama district Agriculture office, 2003; 2003.
4. ADARDO (Ada' a District Agricultural and Rural Development Office); 2007.11–12.
5. Ahid SMM, Medeiros VMC, Bezerra ACD, Maia MB, Xavier VM, Vieira LS. Especies de genero *Eimeria* Schneider,1875. (*Apicomplexa: Eimeriidae*) empequenosruminantesna mesorregiaoeste do estado do Rio Grande do Norte, Brasil. *CiêncAnim Bras*. 2009;10(3):984–989.
6. Al-Bakry HS. Diagnosis and classification of *Eimeria* species in cattle in Mosul. *Iraqi Journal of Veterinary Sciences*. 2009;23(1):17–21. doi:10.33899/ijvs.2009.5686
7. Albayati HH, Jarad NI, Al-Difaie RS, Albayati HH. Microscopic and molecular diagnosis of *Eimeria* spp. in sheep as a model of health investigation. *Microscope*. 2020;12:13.
8. Alemayehu A, Mohammed N, Timketa B. Prevalence of bovine coccidia in Kombolcha district of South Wollo, Ethiopia. *J Vet Med Anim Health*. 2013;5(2):41–45.
9. Almeida VDA, Magalhaes VCS, Muniz-Neta ES, Munhoz AD. Frequency of species of the genus *Eimeria* in naturally infected cattle in Southern Bahia, North-east Brazil. *Rev Bras Parasitol Vet*. 2011;20:78–81. doi:10.1590/s1984-29612011000100017
10. Ayana D, Ayele A, Ashenafi H, Waktole H, Abunna F. *Eimeria* infection in sheep and dairy cattle in Akaki Kality Subcity of Addis Ababa, Ethiopia. *Adv Biol Res*. 2017;11(5):233–241.
11. Ayana D, Tilahun G, Wossene A. Study on *Eimeria* and Cryptosporidium infections in sheep and goats at Elfora export abattoir, Debre-Zeit, Ethiopia. *Turkish J Vet Anim*. 2009;33(5):367–371.
12. Bajer A. Cryptosporidium and Giardia spp. infections in humans, animals and the environment in Poland. *Parasitol Res*. 2008;104:1–17. doi:10.1007/s00436-008-1179-x
13. Bangoura B, Mundt HC, Schmäsckhe R, Westphal B, Dausgshies A. Prevalence of *Eimeria bovis* and *Eimeria zuernii* in German cattle herds and factors influencing oocyst excretion. *Parasitol Res*. 2012;110(2):875–881. doi:10.1007/s00436-011-2569-z
14. Bastianetto E, Filho EJJ, Lana AMQ, et al. Epidemiology of *Eimeria* sp. infection in buffaloes (*Bubalus bubalis*) bred in Minas Gerais, Brazil. *Ital J Anim Sci*. 2007;6(sup2):911–914. doi:10.4081/ijas.2007.s2.911
15. Bruhn FRP, Lopes MA, Demeu FA, Perazza CA, Pedrosa MF, Guimarães AM. Frequency of species of *Eimeria* in females of the Holstein-Friesian breed at the post-weaning stage during autumn and winter. *Rev Bras Parasitol Vet*. 2011;20(4):303–307. doi:10.1590/S1984-29612011000400008
16. Conway P, McKenzie E. *Poultry Coccidiosis and Effect of Coccidiosis Diagnostic and Testing Procedures*. 3rd Ed. Ames, Iowa: Blackwell Publishing; 2007:5.
17. CACC (Central Agricultural Census Commission of Ethiopia); 2003.14–16
18. Chartier C, Paraud C. *Coccidiosis* due to *Eimeria* in sheep and goats, a review. *Small Rumin Res*. 2012;103(1):84–92. doi:10.1016/j.smallrumres.2011.10.022
19. CSA. Central statistical authority of Ethiopia: report on livestock and livestock characteristics (private peasant holdings); 2020. 1–228.
20. Das M, Deka DK, Sarmah PC, Islam S, Sarma, S. Diversity of *Eimeria* spp. in dairy cattle of Guwahati, Assam, India. *Vet World*. 2015;8(8):941. doi:10.14202/vetworld.2015.941-945
21. Dawid F, Amede Y, Bekele M. Calf *Coccidiosis* in selected dairy farms of Dire Dawa, Eastern Ethiopia. *Glob Vet*. 2012;9:460–464.
22. Debelu N, Habtamu Y, Getachew S. *Coccidiosis* in domestic ruminants: review, federal Democratic Republic of Ethiopia, Ministry of Agriculture, Addis Ababa, Ethiopia. *Acta Parasitol Globalis*. 2020;11(3):133–141.

23. Ernst JV, Stewart TB, Witlock DR. Quantitative determination of coccidian oocysts in beef calves from the coastal plain area of Georgia (USA). *VetParasitol.* 1987;23:1–10.
24. Girma M. Prevalence of Eimeria infection in calves in and around Sekota town, North Wollo. *Ethiopia.* 2017;4:169–175.
25. Gebeyehu B, Kebede E, Kiflejohnannes T, Abebe N, Kumar N. Prevalence of calf *Coccidiosis* in Mekelle, northern Ethiopia. *Ethiop Vet J.* 2018;22(2):1–13. doi:10.4314/evj.v22i2.1
26. Hazarika A, Das M. Therapeutic management of winter *Coccidiosis* in cattle calves of Morigaon, Assam. *North-East Vet.* 2018;18(1):25–28.
27. Heidari H, Gharekhani J. Detection of Eimeria species in Iranian native cattle. *Inter J Adv Res.* 2014;2:731–734.
28. Hendrix CM. *Diagnostic Veterinary Parasitology.* 2nd ed. Mosby, Inc; 1998:281–282.
29. Hamid PH, Kristianingrum YP, Prastowo S. Bovine *Coccidiosis* cases of beef and dairy cattle in Indonesia. *Vet Parasitol.* 2019;17:100298.
30. Hassum IC, Menezes RCA. Infecção natural por espécies do gênero *Eimeria* em pequenos ruminantes criados em municípios do estado do Rio de Janeiro. *Rev Bras Parasitol Vet.* 2005;14(3):95–100.
31. Hashemnia M, Rezaei F, Chalechale A, Kakaei S, Gheichivand S. Prevalence and intensity of Eimeria infection in sheep in Western Iran. *Int J Livest Res.* 2014;4(1):107–112. doi:10.5455/ijlr.20140109084416
32. Kambarage DM, Kimera SI, Kusiluka LJM, Matambo MMA. Prevalence of Eimeria and Cryptosporidium oocysts in cattle, sheep and goats in Morogoro region, Tanzania. *J Appl Anim Res.* 1996;9:73–78. doi:10.1080/09712119.1996.9706106
33. Kareem SI, Yücel ŞY. Prevalence of Eimeria species in sheep in Sulaimaniya province, Iraq. *J Entomol Zool Stud.* 2015;3(4):317–322.
34. Kim HC, Choe C, Kim S, et al. Epidemiological survey on Eimeria spp. associated with diarrhea in pre-weaned native Korean calves. *Korean J Parasitol.* 2018;56(6):619. doi:10.3347/kjp.2018.56.6.619
35. Klockiewicz M, Kaba J, Tomczuk K, et al. The epidemiology of calf *Coccidiosis* (Eimeria spp.) in Poland. *Parasitol Res.* 2007;101:121–128. doi:10.1007/s00436-007-0619-3
36. Lakew A, Seyoum Z. Ovine *Coccidiosis*: prevalence and associated risk factors in and around Addis-Zemen, Northwest Ethiopia. *Turk J Vet Anim Sci.* 2016;40:645–650. doi:10.3906/vet-1509-18
37. Leta S, Mesele F. Spatial analysis of cattle and goat population in Ethiopia: growth trend, distribution and market access. *SpringerPlus.* 2014;3(1):1–10. doi:10.1186/2193-1801-3-310
38. Levine D. *Veterinary Protozoology.* Ames: Protozoan parasites of domestic animal and man; Iowa state university press; 1985:150–162.
39. Lopez-Osorio S, Villar D, Failing K, Taubert A, Hermosilla C, Chaparro-Gutierrez JJ. Epidemiological survey and risk factor analysis on Eimeria infections in calves and young cattle up to 1 year old in Colombia. *Parasitol Res.* 2020;119(1):255–266. doi:10.1007/s00436-019-06481-w
40. Malek SS, Kuraa HM. Detection and identification of Eimeria species in naturally infected calves at Assiut Governorate. *Zagazig Vet J.* 2018;46(1):60–69. doi:10.21608/zvz.2018.7624
41. Makau DN, Gitau GK, Muchemi GK, et al. Environmental predictors of bovine Eimeria infection in western Kenya. *Trop Anim Health Prod.* 2017;49(2):409–416. doi:10.1007/s11250-016-1209-0
42. Majeed NM, Aaiz NN, Neama AJ. Molecular study to detect the Eimeria species in sheep in Al-Diwaniyah province, Iraq. *Iraqi J Vet Sci.* 2020;34(2):377–381. doi:10.33899/ijvs.2019.126064.1225
43. Matjila PT, Penzhorn BL. Occurrence and diversity of bovine coccidia at three localities in South Africa. *Vet Parasitol.* 2002;104:93–102. doi:10.1016/S0304-4017(01)00605-7
44. Morgoglione ME, Bosco A, Maurelli MP, et al. A 10-year surveillance of Eimeria spp. in cattle and buffaloes in a Mediterranean area. *Front Vet Sci.* 2020;7:410. doi:10.3389/fvets.2020.00410
45. Muktar Y, Kiltu G, Keffale M. Study on prevalence of small ruminant coccidiosis in and around Haramaya, Eastern Hararge, Ethiopia. *ActaParasitol Glob.* 2016;7:07–11.
46. Munyua WK, Ngotho JW. Prevalence of Eimeria species in cattle in Kenya. *Vet Parasitol.* 1990;35(1–2):163–168. doi:10.1016/0304-4017(90)90126-V
47. NMSA. *National Metrology Service Agency Adama.* Ethiopia; 2006.
48. Oda K, Nishida Y. Prevalence and distribution of bovine coccidia in Japan, Nippon juigaku. *Zasshi.* 1990;52(1):71–77.
49. Oddsdóttir C, Pálsdóttir GR. Patterns of Eimeria excretion in young Icelandic calves. *Icel Agric Sci.* 2021;34:29–39. doi:10.16886/IAS.2021.03
50. Peter SG, Gitau GK, Richards S, et al. Risk factors associated with Cryptosporidia, Eimeria, and diarrhea in smallholder dairy farms in Mukurwe-ini Sub-County, Nyeri County, Kenya. *Vet World.* 2016;9(8):811–819. doi:10.14202/vetworld.2016.811-819
51. Pilarczyk B, Balicka-Ramisz A, Ramisz A. Studies on *Coccidiosis* in cattle in Northwest Poland. *Electro J Polish Agr Univ.* 2000;3:101–103.
52. Pilarczyk B, Balicka-Ramisz A, Kozak W, Ramisz A. Occurrence of endoparasites in heifers imported to Poland from the Netherlands. *ArchivTierzucht.* 2009;52:265–271.
53. Radostits OM, Gay CC, Hinchcliff KW, Constable PD. Veterinary Medicine. In: *A Text Book on Disease of Cattle, Sheep, Pigs and Horse.* 10th ed. Edinburgh: Saunders Elsevier; 2007:262–263.
54. Rehman TU, Khan MN, Sajid MS, et al. Epidemiology of Eimeria and associated risk factors in cattle of district Toba Tek Singh, Pakistan. *Parasitol Res.* 2011;108(5):1171–1177. doi:10.1007/s00436-010-2159-5
55. Rodriguez-Vivas RI, Dominguez-Alpizar JL, Torres-Acosta JF. Epidemiological factors associated to bovine *Coccidiosis* in calves (*Bos indicus*) in a sub humid tropical climate. *Rev Biomed.* 1996;7:211–218.
56. Saratsis A, Joachim A, Alexandros S, Sotiraki S. Lamb *Coccidiosis* dynamics in different dairy production systems. *Vet Parasitol.* 2011;181(2–4):131–138. doi:10.1016/j.vetpar.2011.04.027
57. Sisodia SL, Pathak KML, Kapoor M, Chauhan PPS. Prevalence and seasonal variation in Eimeria infection in sheep in Western Rajasthan, India. *J Vet Parasitol.* 1997;11:95–98.
58. Skirnisson KARL. Eimeria spp. (Coccidia, Protozoa) infections in a flock of sheep in Iceland: species composition and seasonal abundance. *Icel Agric Sci.* 2007;20:73–80.
59. Souza LEBD, Cruz JFD, Teixeira MR, Albuquerque GR, Melo ADB, Tapia DMT. Epidemiology of Eimeria infections in sheep raised extensively in a semiarid region of Brazil. *Revista Brasileira de Parasitologia Veterinária.* 2015;24:410–415.
60. Tamrat H, Mekonnen N, Ferede Y, Cassini R, Belayneh N. Epidemiological study on calf diarrhea and *Coccidiosis* in dairy farms in Bahir Dar, North West Ethiopia. *Ir Vet J.* 2020;73(1):1–8. doi:10.1186/s13620-020-00168-w

61. Tigist T, Merzuk H, Gobu B, Mukarim A. Study on prevalence of calves Coccidiosis in and around Jimma town, Ethiopia. *J Vet Med Res.* 2017;4(3):1077.
62. Thrusfield M. *Veterinary Epidemiology*. 3rd ed. Oxford, UK: Blackwell Science Ltd; 2007:233–261.
63. Urquhart NS, Paulsen SG, Larsen DP. Monitoring for policy-relevant regional trends over time. *Ecol Appl.* 1998;8(2):246–257.
64. Verma R, Das G, Saiyam R, Bendigeri S. Clinical *Coccidiosis* in calves and its treatment. *J Entomol Zool Stud.* 2018;6(2):2964–2967.
65. Woldemariam T, Mohammed T, Mamo G, Ameni G. An abattoir based study of Bovine Tuberculosis in Adama and Bishoftu Abattoirs, Central Ethiopia. *J Sci Dev.* 2018;6:1.
66. Yu SK, Gao M, Huang N, Jia YQ, Lin Q. Prevalence of coccidial infection in cattle in Shaanxi province, Northwestern China. *J Anim Vet Adv.* 2011;1:2716–2719.

Veterinary Medicine: Research and Reports

Dovepress

Publish your work in this journal

Veterinary Medicine: Research and Reports is an international, peer-reviewed, open access journal publishing original research, case reports, editorials, reviews and commentaries on all areas of veterinary medicine. The manuscript management system is completely online and includes a very quick and fair peer-review system. Visit <http://www.dovepress.com/testimonials.php> to read real quotes from published authors.

Submit your manuscript here: <http://www.dovepress.com/veterinary-medicine-research-and-reports-journal>