






CryoEM structure of the low-complexity domain of hnRNPA2 and its conversion to pathogenic amyloid

Jiahui Lu^{1,2}, Qin Cao ^{1,2}, Michael P. Hughes^{1,2,3}, Michael R. Sawaya ^{1,2}, David R. Boyer ^{1,2},
Dulio Cascio ^{1,2} & David S. Eisenberg ^{1,2}✉

hnRNPA2 is a human ribonucleoprotein (RNP) involved in RNA metabolism. It forms fibrils both under cellular stress and in mutated form in neurodegenerative conditions. Previous work established that the C-terminal low-complexity domain (LCD) of hnRNPA2 fibrillizes under stress, and missense mutations in this domain are found in the disease multisystem proteinopathy (MSP). However, little is known at the atomic level about the hnRNPA2 LCD structure that is involved in those processes and how disease mutations cause structural change. Here we present the cryo-electron microscopy (cryoEM) structure of the hnRNPA2 LCD fibril core and demonstrate its capability to form a reversible hydrogel in vitro containing amyloid-like fibrils. Whereas these fibrils, like pathogenic amyloid, are formed from protein chains stacked into β -sheets by backbone hydrogen bonds, they display distinct structural differences: the chains are kinked, enabling non-covalent cross-linking of fibrils and disfavoring formation of pathogenic steric zippers. Both reversibility and energetic calculations suggest these fibrils are less stable than pathogenic amyloid. Moreover, the crystal structure of the disease-mutation-containing segment (D290V) of hnRNPA2 suggests that the replacement fundamentally alters the fibril structure to a more stable energetic state. These findings illuminate how molecular interactions promote protein fibril networks and how mutation can transform fibril structure from functional to a pathogenic form.

¹Departments of Chemistry and Biochemistry and Biological Chemistry, University of California, Los Angeles, Los Angeles, CA, USA. ²UCLA-DOE Institute, Molecular Biology Institute, Howard Hughes Medical Institute, Los Angeles, CA, USA. ³Present address: Department of Cell and Molecular Biology, St. Jude Children's Research Hospital, Memphis, TN, USA. ✉email: david@mbi.ucla.edu

The protein hnRNPA2 functions in RNA stabilization, splicing, trafficking, and translation^{1–4}. In its role in protecting mRNAs, it is a component of cytoplasmic stress granules, one of the so-called membraneless organelles (MLOs)^{1,5}. Its 341 amino-acid-residue sequence contains an RNA-binding domain (RBD) with two RNA recognition motifs (RRMs) and a 161-residue C-terminal low-complexity domain (LCD). The LCD is rich in Gly, Tyr, Phe, Asn, and Asp residues, and poor in hydrophobes, with Val, Ala, Leu, and Ile entirely absent. Regions of biased amino acid composition, such as this, allow transient interactions between the many known MLO-forming proteins^{1,5–8}.

Aggregated hnRNPA2 has been found to have nuclear clearance and cytoplasmic inclusions under cellular stress², and in vitro its LCD forms fibrils with the capacity to interact with each other to make hydrogels of the sort observed in MLOs^{1,6}. In vitro studies have shown evidence of liquid droplets over time turning into hydrogels containing fibrils^{9,10}. The hnRNPA2-LCD hydrogel can trap other functional proteins such as hnRNPA1 and CIRBP¹, suggesting a functional role for the hydrogel.

The fibrils of MLOs are functional in contrast to pathogenic fibrils associated with neurodegenerative conditions. One such condition is the disease MultiSystem Proteinopathy (MSP) with symptoms indistinguishable from ALS and FTD. Patients with this disease present with aggregated hnRNPA2 in cytoplasmic inclusions² and the variant sequence D290V in the LCD of hnRNPA2. Other mutations found in the RNP LCDs were previously shown to impede MLO and hydrogel formation^{1,11,12}.

Informing both functional MLO-associated fibrils and pathogenic disease-associated fibrils, hnRNPA2 is similar to other RNA-binding proteins, including hnRNPA1¹³, FUS^{7,9,12,14}, TIA1¹¹, and TDP-43^{15,16}. For this reason, knowledge of the structures of these proteins, and of their LCDs in particular, may uncover general principles of how proteins can form both functional and pathogenic fibrils. Near-atomic structures are already available for the ordered fibril cores of the LCDs of FUS¹⁴ and TDP-43¹⁵.

Here we determined the cryoEM structure of the LCD of hnRNPA2 and the crystal structure of the segment containing the variant sequence D290V. These structures help to answer the questions: (1) What sequence features account for the formation of the functional fibrils? (2) What structural features of the functional fibrils drive them to bind non-covalently with each other to form the networks that underlie hydrogels? And (3) How does a single residue mutation convert functional to pathogenic fibrils?

Results

Hydrogel and fibril formation of mC-hnRNPA2-LCD.

Purified recombinant mC-hnRNPA2-LCD was concentrated to ~60 mg ml⁻¹ and incubated at 4 °C to test its ability to form a hydrogel. Determination of whether the sample exists in a liquid or gel phase is assayed by the mobility of a bubble through the sample. We inverted a 1.5 ml silicon tube containing freshly purified mCherry-tagged (purple color) hnRNPA2-LCD (termed mC-hnRNPA2-LCD), and then introduced a bubble at the lower surface. The bubble rose to the top of the tube, indicating a homogenous solution rather than a gel (Fig. 1a, left). Within a week, the protein solution converted into a gel, indicated by the retention of bubbles at the lower surface (Fig. 1a, right). Negative-stain transmission electron microscopy (TEM) of the diluted hydrogel showed a network of uniform amyloid-like fibrils with an average width of 20 nm (Fig. 1b). The X-ray diffraction pattern is consistent with cross- β architecture: two reflections at 4.7 and 10 Å corresponding to the inter-strand and inter-sheet spacing, respectively¹⁷, of amyloid fibrils (Fig. 1c).

Reversibility of mC-hnRNPA2-LCD hydrogel. To test whether the hnRNPA2-LCD hydrogel is reversible, we performed a reversibility assay on purified mC-hnRNPA2-LCD incubated at 4 °C for either 2 days or 2 weeks. After heating the 2-day hydrogel to 45 °C, the bubbles introduced stayed at the bottom of the sample, indicating maintenance of a hydrogel state (Supplementary Fig. 1a, left). TEM images showed networks of uniform, twisted, and unbranched amyloid-like fibrils similar to those observed before heating (Supplementary Fig. 1b, left). However, after heating to 55 °C, introduced bubbles slowly rose and stalled in the middle of the hydrogel (Supplementary Fig. 1a, middle). TEM of these samples showed fragmented fibrils and partial disruption of fibril networks (Supplementary Fig. 1b, middle). After heating to 65 °C and above, the hydrogel transitioned to a homogenous protein solution where bubbles introduced quickly rose to the top of the silicon tube (Supplementary Fig. 1a, right), indicating the 2-day hydrogel is reversible. TEM revealed that over 80% of the fibrils are dissolved, leaving behind amorphous aggregates (Supplementary Fig. 1b, right). For the 2-week hydrogel, bubbles introduced remained immobile up to 75 °C heating (Supplementary Fig. 1c) and TEM images (Supplementary Fig. 1d) revealed a fibril morphology similar to the 2-day hydrogel. Hence, the 2-week hydrogel appears less reversible than the 2-day hydrogel. Moreover, the 2-week fibrils at 65 °C were more bundled than the remnant of 2-day hydrogel fibrils at 65 °C. We infer that the young hnRNPA2 fibrils are mostly reversible, but aging makes the fibrils irreversible, possibly by the evolution of fibril bundling. We also purified and concentrated the mCherry tag alone as a negative control, and we found that fibril networks and the amorphous aggregates were not the result of mCherry itself (Supplementary Fig. 2).

CryoEM structure of the mC-hnRNPA2-LCD fibrils. To answer the question of why the mC-hnRNPA2-LCD hydrogel exhibits reversibility, we determined the cryoEM structure of mC-hnRNPA2-LCD fibrils to a resolution of 3.1 Å (Fig. 2c). During cryoEM data collection and processing, we found that the mC-hnRNPA2-LCD fibrils have only a single morphology, which consists of one asymmetric protofilament with a pitch of 600 Å, a left-handed helical twist of -2.88° and a helical rise of 4.81 Å (Fig. 2b and Supplementary Fig. 3). Contrary to the globular proteins which form 3D structures, the mC-hnRNPA2-LCD structure is confined to 2D layers which stack on top of each other, forming a twisted in-register β -sheet that runs along the fibril axis. Out of 161 residues in the LCD, 57 residues from Gly263 to Tyr319 form a fibril core (Fig. 2a). The mC-hnRNPA2-LCD fibril encompasses a PY-nuclear localization signal (PY-NLS) and the core hexamer segment containing the site for a disease-causing mutation that was identified by Kim et al. in 2013² (Fig. 2d). Previous studies have shown that mutations in the PY-NLS can lead to ALS¹⁸. An aromatic triad composed of two Tyr (Y275 and Y283) residues and one Phe (F309) residue is buried in the center of the fibril, stabilizing the structure through π - π interactions (Supplementary Fig. 4). Data collection and refinement statistics are summarized in Table 1.

Energy analysis explains hnRNPA2-LCD fibrils' reversibility.

To quantify the structural features that led to the reversibility of hnRNPA2-LCD fibrils, we calculated the solvation energy for our mC-hnRNPA2-LCD fibril structure (details in “Methods” section). We obtained the solvation energy per layer of the fibril and an averaged solvation energy per residue. We illustrated these energies in a solvation energy map where each residue is colored according to its energy. The solvation energy for mC-hnRNPA2-LCD fibril core (-19.5 kcal mol⁻¹ per chain and -0.34 kcal mol⁻¹

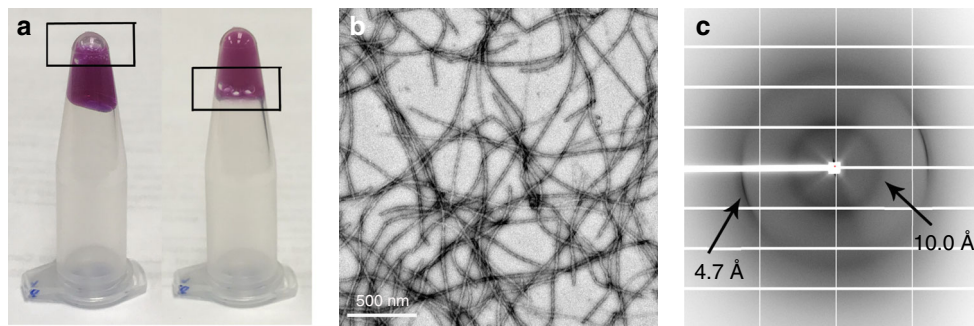


Fig. 1 mC-hnRNP2-LCD forms a reversible hydrogel that contains amyloid-like fibrils displaying the cross- β diffraction pattern. **a** Left microcentrifuge tube holds a homogenous solution of freshly purified mC-hnRNP2-LCD. A bubble (box) rises to the top of the tube. The right tube contains the hydrogel formed by concentrated mC-hnRNP2-LCD; the bubble is trapped by the hydrogel. **b** Hydrogel formed by mC-hnRNP2-LCD visualized by transmission electron microscopy shows uniform, amyloid-like fibrils. Scale bar: 500 nm. **c** X-ray diffraction pattern of the hydrogel formed by mC-hnRNP2-LCD. The two reflections characteristic of amyloid are visible at 4.7 and 10 Å spacings.

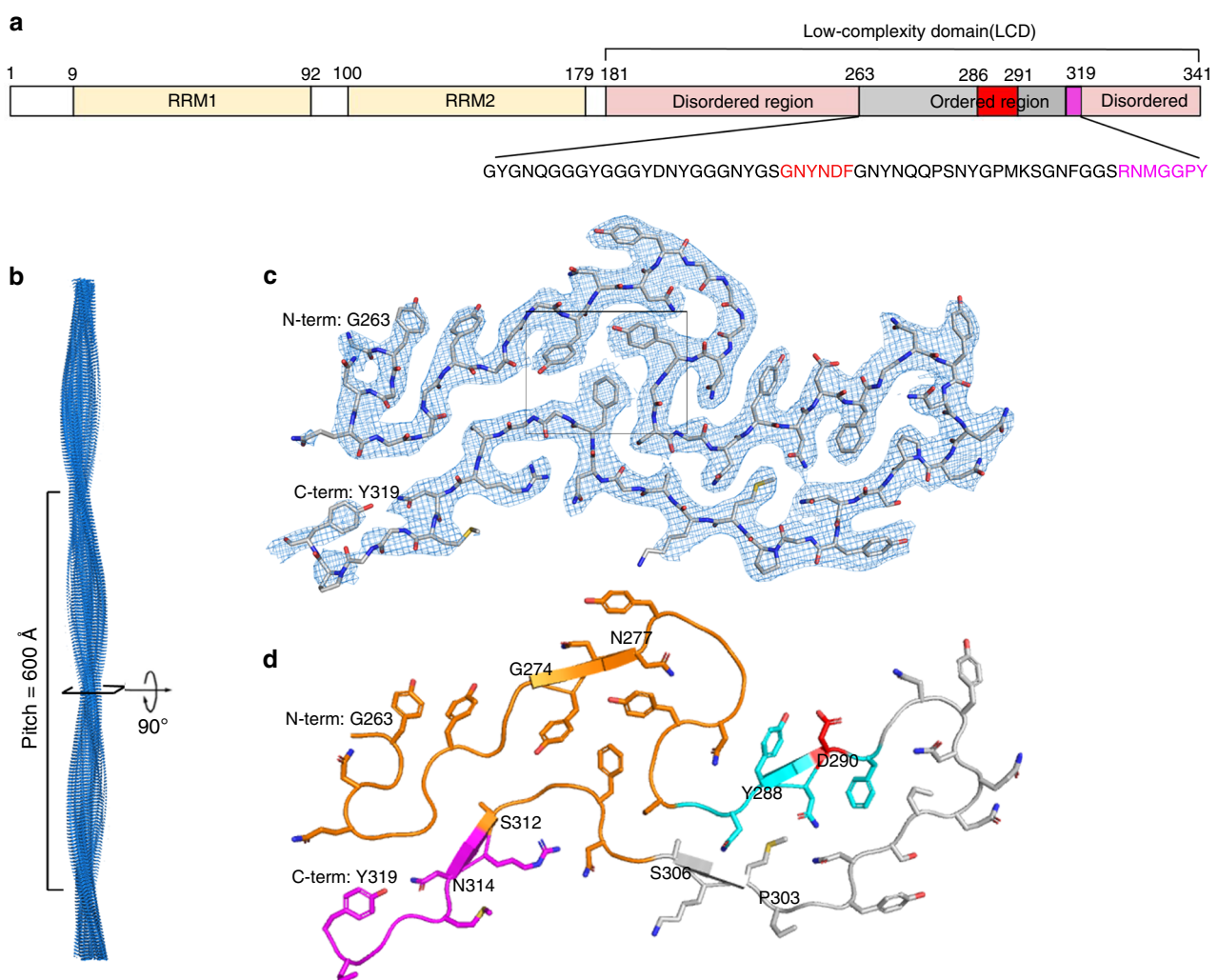


Fig. 2 The Cryo-EM structure of the mC-hnRNP2-LCD fibril core. **a** Domain structure of full-length hnRNP2. The LCD (residues 181–341) is identified for structural determination. The gray bar shows the range of the ordered fibril core of the cryoEM structure. The red bar shows the core segment (crystal structure described below) containing the site of a disease-causing mutation. The magenta bar shows the nuclear localization signal, PY-NLS. The sequence of the ordered region is shown below with corresponding colors. **b** The mC-hnRNP2-LCD fibril reconstruction, showing its left-handed twist and pitch. **c** Density and atomic model of one cross-sectional layer of the fibril. The box shows the aromatic triad. **d** Atomic model of one cross-sectional layer of the fibril. The predicted LARKS domain (contains 7 LARKS motifs) (above) and the shorter LARKS motif (below) are colored orange; the core segment is colored cyan, with its disease-causing mutation site colored red; the nuclear localization signal is colored magenta (lower left). β -sheet-forming residues are G274–N277, Y288–D290, P303–S306, S312–N314, indicated by arrows.

per residue) is comparable to another well-known reversible protein fibril, FUS ($-12.2 \text{ kcal mol}^{-1}$ per chain and $-0.20 \text{ kcal mol}^{-1}$ per residue) (Fig. 3a, b). In contrast the solvation energy of pathogenic irreversible amyloid structures such as human serum

amyloid A¹⁹ ($-34.4 \text{ kcal mol}^{-1}$ per chain and $-0.64 \text{ kcal mol}^{-1}$ per residue) has a more negative value per chain and residue (Fig. 3c), indicating that compared to the pathogenic amyloid fibrils, mC-hnRNPA2-LCD fibrils form less stable structures. Solvation energies of other proteins are compared in Table 2.

Table 1 Statistics of cryoEM data collection, refinement, and validation.

	HnRNPA2-LCD (EMD-21871) (PDB: 6WQK)
<i>Data collection and processing</i>	
Magnification	×130,000
Voltage (kV)	300
Electron exposure ($e^- \text{ \AA}^{-2}$)	34.5
Defocus range (μm)	0.8–5.1
Pixel size (\AA)	1.064
Symmetry imposed	C1; Helical
Initial particle images (no.)	529,821
Final particle images (no.)	132,571
Map resolution (\AA)	3.1
FSC threshold	0.143
Map resolution range (\AA)	200–3.1
<i>Refinement</i>	
Initial model used	De Novo
Model resolution (\AA)	3.2
FSC threshold	0.5
Model resolution range (\AA)	200–3.2
Map sharpening <i>B</i> factor (\AA^2)	−120
<i>Model composition</i>	
Non-hydrogen atoms	2070
Protein residues	285
<i>B</i> factors (\AA^2)	
Protein	55.3
<i>R.m.s. deviations</i>	
Bond lengths (\AA)	0.006
Bond angles ($^\circ$)	0.89
<i>Validation</i>	
MolProbity score	1.70
Clashscore	5.59
Poor rotamers (%)	0.00
<i>Ramachandran plot</i>	
Favored (%)	94
Allowed (%)	6
Disallowed (%)	0.00

The disease-causing mutant core segment. Muscle biopsies have found atrophic hnRNPA2 fibrils in patients diagnosed with inclusion body myositis (IBM)². A missense point mutation that converts a conserved aspartic acid to a valine (D290V) in hnRNPA2-LCD was identified in 2013 as being associated with ALS and MSP². To investigate the structural differences between the wildtype and the mutant, we crystallized the hexamer segment 286^{GNYNVF}291 (Supplementary Fig. 5) containing the disease-causing mutation and determined its structure by X-ray crystallography (Fig. 4a and Statistics in Table 3). As expected, the crystal structure of the mutant segment forms a steric zipper motif and the sidechains of the two β -sheets mate tightly with each other in a dry interface. The area buried (Ab) and shape complementarity (Sc) for the mutant segment are 104 \AA^2 per chain and 0.86, respectively. The mutant segment structure forms in-register, parallel β -sheets. To compare this mutant segment crystal structure with our cryoEM wildtype mC-hnRNPA2-LCD structure, we overlaid the two structures (Fig. 4b). The backbones of the wildtype structure and the mutant segment fit well with each other, whereas the sidechain of Asp290 in the wildtype structure clashes with Asn289 of the mating sheet of mutant steric zipper, disrupting the steric zipper formation. On the other hand, forming the steric zipper in the mutant structure causes Asn287 and Tyr288 sidechains to adopt different conformations, which create steric clashes with nearby Asn282 and Met304 residues in the wildtype fibril structure. Moreover, Phe291 from the mating sheet of the steric zipper clashes with the backbone of Gly281 in the wildtype fibril structure. Based on this structural analysis, we speculate that the D290V mutation converts the reversible hnRNPA2 fibrils to irreversible fibrils. When the conserved Asp290 residue is mutated to a Val, the mutation enables a more stable steric zipper interaction that was previously prevented by the Asp290 sidechain. Meanwhile, the formation of a steric zipper causes multiple steric clashes and disrupts the wildtype fibril structure, shifting the aggregation of hnRNPA2 from reversible to irreversible.

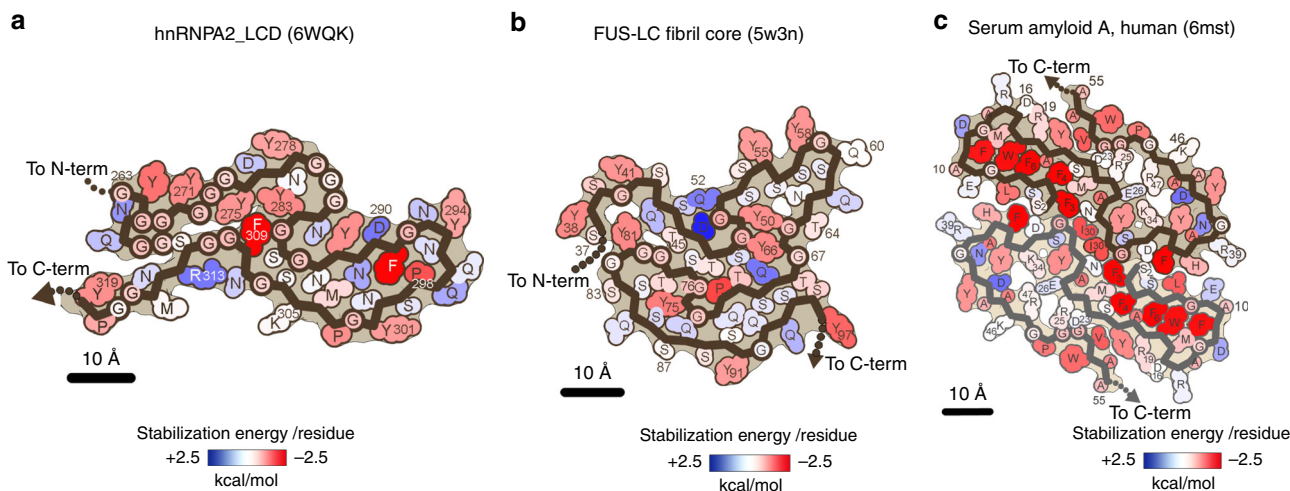


Fig. 3 Solvation energy maps of mC-hnRNPA2-LCD, FUS-LCD, and serum Amyloid A. Residues are colored according to their stabilization energies from unfavorable (blue, $+2.5 \text{ kcal mol}^{-1}$) to favorable (red, $-2.5 \text{ kcal mol}^{-1}$). **a** Solvation energy map of mC-hnRNPA2-LCD ordered fibril core. **b** Solvation energy map of FUS-LCD¹⁴ ordered region. **c** Solvation energy map of human serum amyloid A¹⁹, ordered region.

Table 2 Comparative values of solvation standard free energies of functional and pathogenic fibrils.

	Ordered residues	Method	Resolution (Å)	Energy/chain (kcal mol ⁻¹)	Energy/residue (kcal mol ⁻¹)
hnRNPA2-LCD (functional)	57	CryoEM	3.1	-19.5	-0.34
FUS-LCD (functional)	61	ssNMR	2.7	-12.2	-0.20
Serum amyloid A Human (pathogenic)	54	CryoEM	2.7	-34.4	-0.64
Tau PHFs AD patient (pathogenic)	73	CryoEM	3.4	-28.9	-0.40
Aβ42 (pathogenic)	42	CryoEM	4.0	-24.8	-0.59

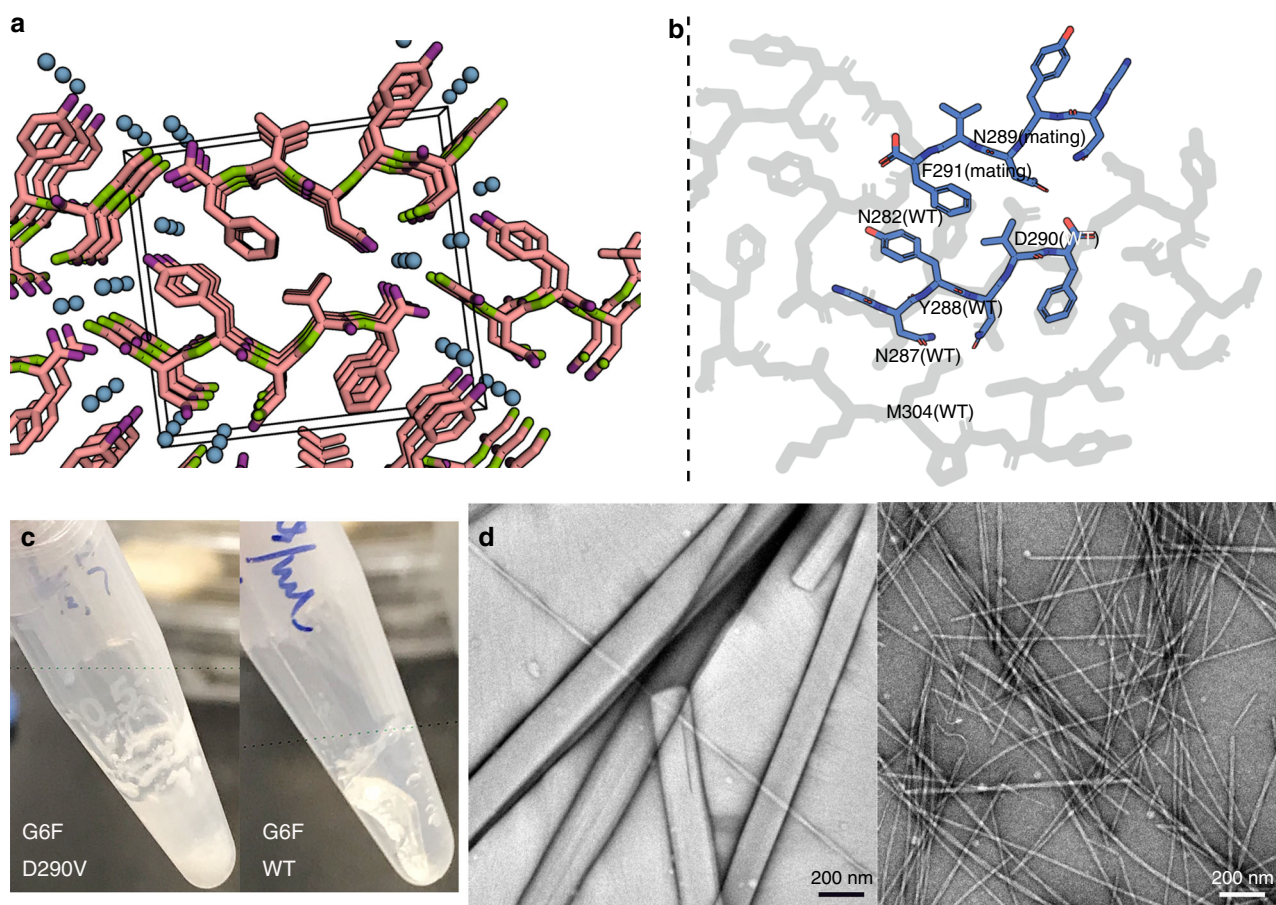


Fig. 4 Mutant core segment and the corresponding wildtype segment show distinct features. **a** The steric zipper structure determined for mutant segment GNYNVF, viewed down the fibril axis. Water molecules within the structures are shown as aqua spheres. The unit cell is shown as a box. **b** A superimposition of the mutant steric zipper structure of GNYNVF (blue) on the cryoEM mC-hnRNPA2-LCD structure (gray) shows the incompatibility of the mutant structure with the fold of the wildtype fibril. Only the corresponding part of the wildtype structure is shown. The sidechains of Asn287, Tyr288, and Asn289 of the mutant structure experience steric clashes with the sidechains of Asn282, Asp290, and Met304 of the wildtype structure. **c** Left: Mutant segment GNYNVF shaken after 4 days forms a white precipitate. Right: Wildtype segment GNYNDF shaken after 4 days forms a hydrogel. **d** Left: The mutant segment GNYNVF (from **c**) visualized by transmission electron microscopy, shows wide needle crystals. Scale bar: 200 nm; Right: Wildtype segment GNYNDF (from **c**) visualized by transmission electron microscopy, shows thin fibrils.

To compare the effects on aggregate formation of the wildtype core segment GNYNDF and the mutant segment GNYNVF, both were shaken for 4 days and the samples were checked using negative stain TEM (details in “Methods” section). The mutant segment, as we expected, precipitated after shaking (Fig. 4c, left), and TEM images showed that the precipitates were composed of micro-crystals (Fig. 4d, left). The wildtype segment forms a hydrogel (Fig. 4c, right), which to our knowledge is the shortest segment that forms a hydrogel, and TEM images indicated that the gel was composed of thin fibrils (Fig. 4d, right). The results suggest that the mutant segment with the pathogenic mutation forms a

more stable structure than the WT segment, and converts a gel-promoting segment into an aggregation-promoting segment.

Discussion

mC-hnRNPA2 LCD fibrils reveal distinctly different structural and energetic properties from pathogenic amyloid (Table 4). Our TEM and X-ray diffraction data show that mC-hnRNPA2-LCD forms fibril networks with cross-β structures (Fig. 1). Unlike pathogenic amyloid fibrils, which are usually not crosslinked and are stable at high temperatures^{15,16,20}, mC-hnRNPA2-LCD fibrils form 3-dimensional networks and are sensitive to even mild heat

(Supplementary Fig. 1). Heated mC-hnRNPA2-LCD, instead of remaining as a fibril network, is broken into oligomer-like material, and does not reform a hydrogel upon cooling. We hypothesize that in this *in vitro* experiment, the environment lacks biological factors such as chaperones to achieve reversibility. Nevertheless, the smaller stabilization solvation energy compared to pathogenic amyloid indicates the reversibility of hnRNPA2 LCD fibrils (Fig. 3). Amyloid-like fibrils have also been reported for other granule-associated, LCD-containing proteins, such as FUS^{1,21} and hnRNPA1¹³, those being heat-sensitive and SDS-sensitive, and being capable of forming a reversible hydrogel.

Our cryoEM structure of mC-hnRNPA2-LCD fibrils reveals local structural motifs that distinguish reversible from pathogenic amyloid: mC-hnRNPA2-LCD fibrils contain multiple weakly binding LARKS motifs²² and only a single short steric zipper motif²³. LARKS are low-complexity amyloid-like, reversible kinked segments which enable amyloid-like assembly with reduced stability compared to steric zippers²². Steric zippers are pairs of β -sheets in which the sidechains of one β -sheet interdigitate with those of the opposing sheet to form a tight, dry interface^{23,24}. Unlike steric zippers, the β -sheets formed by LARKS are often kinked either at a Gly or aromatic residues²², limiting the size of interacting surfaces. Consequently, LARKS are

less stabilizing than steric zippers. Within the mC-hnRNPA2-LCD fibril core there are eight predicted LARKS (Hughes et al., *in preparation*), seven grouped together (Supplementary Fig. 6a and Fig. 2d), each corresponding to a kink in the protein backbone. The structure contains only four short β -sheets, reducing the possibility of steric zippers (Fig. 2d). The multiple LARKS motifs introduce kinks into the backbone of the structure, disrupting stabilizing β -sheets into segments shorter than the six residues of most steric zippers, thus contributing to the reversibility of the hnRNPA2-LCD fibrils. Pathogenic amyloid typically houses a high content of β -sheets capable of forming steric zippers, for example Tau PHFs²⁵ (78%) and A β 42²⁶ (74%) in contrast to reversible amyloid-like fibrils hnRNPA2 (23%) and FUS¹⁴ (26%). We note the location of the short β -sheets in hnRNPA2-LCD are consistent with the secondary structure prediction of Murray et al.²⁷ (Fig. 2d). We regard LARKS and steric zippers as the structural basis of “stickers”^{28,29} in reversible, amyloid-like fibrils and pathogenic amyloid fibrils, enabling inter-protein and intra-protein interactions.

A further feature that distinguishes reversible amyloid-like fibrils from irreversible, pathogenic fibrils is the enrichment of polar residues in the fibril core. As shown in the mC-hnRNPA2-LCD residue polarity map, almost 50% of the residues are hydrophilic and only 12% are hydrophobic (Supplementary Fig. 6b), and the core contains a high content of Gly (35%), Asn (18%), and Tyr (16%) compared to tau PHFs²⁵ (Gly:12%, Asn:4%, Tyr:1.4%) and A β 42²⁶ (Gly:14%, Asn:2%, Tyr:2%). Furthermore, hnRNPA2-LCD lacks any instance of the hydrophobic residues Val, Ala, Ile, and Leu. In contrast, tau PHFs²⁵ and A β 42²⁶ contain 24% and 36%, respectively, of these residue types (Table 5). The high content of Gly contributes to hnRNPA2-LCD flexibility. 3D environment profiling³⁰ also suggests a higher percentage of residues exposed to solvent (35%) and a lower content of nonpolar residues (4%) compared to tau PHFs²⁵ (12% and 13%) and A β 42²⁶ (14% and 18%) (Table 6). These differences are also manifested in solvation energy maps (Fig. 3). Our results indicate that hnRNPA2-LCD adopts a cross- β fibril assembly that morphologically resembles pathogenic amyloid. However, quantitative examination shows that reversible amyloid-like fibrils differ from pathogenic amyloid by having a smaller solvation stabilization energy and a greater enrichment of LARKS and polar residues. These features facilitate hydrogen-bonding with water molecules and contribute to LCD flexibility and capacity for assembly and disassembly in stress granules.

hnRNPA2 and FUS¹⁴, both proteins that function in stress granules, form fibrils which share four structural features. First, both are mainly stabilized by hydrogen-bonding and polar interactions rather than hydrophobic effects. Both hnRNPA2-LCD and FUS-LCD fibril cores are enriched in Tyr residues that stabilize structures by π -stacking interactions^{14,24,31}. Similar to hnRNPA2-LCD, the FUS-LCD fibril core has ample polar

Table 3 Statistics of X-ray crystallography data collection and refinement.

	GNYNVF PDB: 6WPQ
<i>Data collection</i>	
Space group	P2 ₁
<i>Cell dimensions</i>	
<i>a</i> , <i>b</i> , <i>c</i> (Å)	4.78, 19.00, 20.74
α , β , γ (°)	90.00, 95.71, 90.00
Resolution (Å)	1.1
<i>R</i> _{merge} (%)	11.6 (21.8)
<i>I</i> / σ <i>I</i>	10.4 (5.7)
Completeness (%)	86.5 (41.7)
Redundancy	5.6 (3.5)
<i>Refinement</i>	
Resolution (Å)	20.64–1.10
No. of reflections	1196
<i>R</i> _{work} / <i>R</i> _{free} (%)	7.5/10.7
<i>No. of atoms</i>	
Protein	51
Water	3
<i>B-factors</i> (Å ²)	
Protein	4.8
Water	7.4
<i>R.m.s. deviations</i>	
Bond lengths (Å)	0.014
Bond angles (°)	1.804

Table 4 Comparative properties of functional amyloid-like fibrils and pathogenic amyloid fibrils.

	Functional amyloid-like fibrils	Pathogenic amyloid fibrils
Variety	Monomorphic	Tend to be polymorphic
Stability	Tend to be labile and reversible	Tend to be stable and irreversible
ΔG° of stabilization	~ -0.2 kcal mol-of-residue ⁻¹	~ -0.4 kcal mol-of-residue ⁻¹
Protein chains stack into β -sheets by backbone H-bonds	Yes	Yes
Sheets pair	Yes, by LARKS	Yes, by steric zippers
Residues that drive sheet pairing	Often Asn, Gln, Tyr, Phe, Ser, Gly, Pro in low-complexity domains	Varied, but frequently alternating polar and apolar especially Val, Ile, Val
Fiber diffraction pattern	Cross- β	Cross- β
Morphology	Crosslinked networks of fibrils	Non-crosslinked deposits of fibrils

residues (Table 5, columns 2 and 3), and FUS-LCD has a high content of glutamine residues that are either exposed to solvent or form stabilizing hydrogen-bonded ladders along the fibril axis. The abundance of residues with hydroxyl groups in both hnRNPA2 and FUS (Table 5, column 3) allows post-translational modifications, such as phosphorylation³², to modulate the stability of the fibrils, affecting stress granule assembly. Compared to hnRNPA2-LCD, the FUS-LCD has a relatively high content of Ser and Thr residues, allowing additional stabilization of the core structure through sidechain hydrogen bonding.

Second, solvation energy calculations suggest that the stability of the mC-hnRNPA2-LCD fibril structure is nearly as poor as FUS-LCD. Because the LCDs in hnRNPA2 and FUS are reversible fibrils associated with stress granules, we expect both to have lower stability than pathogenic amyloid fibrils. And this is confirmed by our solvation energy calculation (Fig. 3b and Table 2). The relatively small solvation stabilization energy explains why hnRNPA2 and FUS are sensitive to mild heat and denaturing condition such as 2% SDS¹⁶.

Third, hnRNPA2 and FUS fibrils exhibit only a single morphology. In contrast, a majority of the studied structures of pathogenic irreversible amyloid have shown polymorphism, whether the fibrils were produced *ex vivo* or *in vitro*. For example, so far, cryoEM and ssNMR studies have identified nine morphologies for different isoforms of pathogenic protein tau^{25,33}, three morphologies for TDP-43¹⁵, and six morphologies for A β 42^{26,34–38}. Moreover, multiple fibril polymorphs have been structurally determined under a single set of conditions from the same EM grid^{15,39}. Unlike the polymorphism seen in the pathogenic irreversible fibril structures, our cryoEM structure of mC-hnRNPA2-LCD fibril shows only a single morphology under the condition tested. This lack of polymorphism is also seen in the FUS-LCD structure that was determined by ssNMR¹⁴. As suggested previously, monomorphic structure is essential for proper biological functions of proteins¹⁴. Similar to globular proteins, reversible amyloid-like fibrils have apparently been honed by evolution to adopt a single structure to support a given function. Reversible fibrils such as hnRNPA2 can undergo folding and unfolding to find a kinetically accessible global free energy minimum, leading to an optimal structure of lowest accessible free energy. The hnRNPA2-LCD is conserved among distantly related organisms (Supplementary Fig. 7), further evidence of its

functional role. Fourth, both FUS-LCD and mC-hnRNPA2-LCD fibrils are composed of a single protofilament rather than two or more, as is the case with more than 70% of pathological fibrils structurally determined.

Enrichment in LARKS motifs also diminishes the tendency for polymorphism. Interactions between two LARKS motifs are more specific than steric zippers since complementarity between kinked surfaces requires a particular sequence, whereas complementarity between two canonical flat β -sheets can be achieved by more sequences. Furthermore, a kinked sheet of a given sequence has few plausible ways to fit with a partner kinked sheet, whereas two flat β -sheets have a range of plausible registrations with respect to each other to achieve different low-energy structures. The polymorphism seen in pathogenic irreversible fibrils represents different structures that are trapped in multiple local free energy minimum. The hnRNPA2 being reversible and functional *in vivo* implies that it should also follow the Anfinsen's dogma⁴⁰ that the native full-length hnRNPA2 fibrils *in vivo* should have the same structure as the recombinant protein structure we report here.

Our cryoEM hnRNPA2-LCD structure is consistent with previous biochemical and NMR studies. Xiang et al. in 2015⁶ reported that the hnRNPA2-LCD adopts a similar structure in hydrogels and in liquid droplets as evidenced by conservation of NAI footprints which probed 23 residues of hnRNPA2-LCD from Ser219 to Ser335. They found the N-terminal portion was unprotected from NAI labeling, but the C-terminal portion encompassing N282–Y324 was protected. This protected region overlaps well with our ordered core spanning residues G263–Y319. The identity of the only unprotected probe residue in this range, Lys305, agrees with our cryoEM structure showing that the sidechain of Lys305 points toward the solvent. There is also agreement between the partial protection of residues Asn282, Tyr288, and Ser312 and our observation that all three are partially buried in the fibril core. Similar consistency is found between the strong protection of Ser285, Ser306, and Ty319 and our observation that these residues are completely buried (Fig. 2c). The structural consistency among different structural studies of hnRNPA2-LCD, specifically our cryoEM, Murray et al.'s NMR²⁷, and Xiang et al.'s NAI footprinting⁶, suggests two important points: (1) the fibril core structure of hnRNPA2-LCD is identical or closely similar among three studies, (2) the interactions of residue sidechains we report are closely similar as Xiang et al.'s observations in both hydrogel and liquid droplets.

We offer a speculative hypothesis of how a single-point missense mutation can alter the fibril structure. This hypothesis is consistent with the data we have. As indicated by its greater stabilization energy, the mutant segment GNYNVF is more prone to form crystals than the wild type segment GNYNDF (Fig. 4). In addition, we calculated the stabilization energy of the mutant segment and all hexamer segments that constitute the wild type hnRNPA2 LCD fibril, FUS LCD fibril, and pathogenic amyloids. Unsurprisingly, the mutant segment is an outlier in terms of having greater energetic stability than any hexameric segment in either hnRNPA2 or FUS (Supplementary Fig. 8a). This energetic analysis supports our hypothesis that when this mutation forms, the mutant segment can drive the assembly of a more stable fibril.

If the wild type segment GNYNDF of full-length hnRNPA2 assembles as it does in the peptide crystal structure, the remaining

Table 5 Comparative sequence composition of functional and pathogenic amyloid fibril cores.

	Gly (%)	Asn+Gln (%)	Tyr+Ser+Thr (%)	Val+Ala+Ile+Leu (%)
hnRNPA2-LCD (functional)	35.1	22.8	22.8	0.0
FUS-LCD (functional)	19.7	18.0	59.1	0.0
Tau PHFs (pathogenic)	12.3	8.2	15.1	24.4
A β 42 (pathogenic)	14.3	4.8	7.2	35.7

Table 6 Comparative 3D-1D environmental profiles of hnRNPA2-LCD with pathogenic amyloids.

Protein	Exposed to solvent (%)	Partially buried with high fractional environmental polarity (%)	Nonpolar buried (%)
hnRNPA2-LCD	35	32	4
Tau PHFs	12	30	13
A β 42	14	24	18

residues would necessarily adopt a different conformation than the wild type fibril in order to avoid steric clash with the hexapeptide assembly. Our cryoEM images offer evidence that the mC-hnRNPA2-D290V-LCD fibrils are more heterogeneous and thicker than the wild type mC-hnRNPA2-LCD fibrils (Supplementary Fig. 8b, c). This supports our hypothesis that the D290V mutation drives the mutant segment GNYNVF to adopt a homo-zipper conformation and drives the fibril assembly into a different structure with two protofilaments.

Previous studies by Guo et al.⁴¹ showed that over half of the LCD-containing RNPs such as FUS, TAF15, hnRNPA1, and hnRNPA2 possess a PY-NLS. They found that the import receptor karyopherin- β 2 (Kap β 2) binds the PYNLS signal of these RNPs and then, once bound, acts as chaperones that dissolve pre-formed fibrils. The PYNLS of hnRNPA2 (residues 296–319), containing two epitopes: a hydrophobic/basic residue stretch (residue 196–312) and a consensus sequence R/K/H-X_(2–5)-PY (residue 313–316), is located right after a central steric zipper motif (segment ²⁸⁶GNYNDF²⁹¹) that drives hnRNPA2 fibrillization². Our structure of hnRNPA2 provides insight into how this interaction of Kap β 2 with hnRNPA2 functions to prevent fibrillization from occurring.

The hnRNPA2 fibril core is essentially a highly kinked, branched β -arch. The potential fibril-driving steric zipper motif (286–291) forms the only extended (unkinked) β -strand in the fibril structure and contributes to the upper half of the β -arch (Fig. 2d). The lower half of the β -arch is part of the PYNLS signal (residues 296–319). The PYNLS signal forms a hydrophobic pocket between P298 and N300 that buries the terminal aromatic residue of the steric zipper F291 in the fibril core, yielding a significant amount of the stabilization energy (Fig. 3a). We infer that if Kap β 2 binds to the PYNLS signal, the bottom half of the β -arch is unavailable to make the hydrophobic environment necessary to sequester F291 to stabilize the central steric zipper and form fibrils. In addition, we propose that owing to the labile nature of the hnRNPA2 fibrils, monomers may more easily dissociate from the fibril and be sequestered by Kap β 2. This is supported by the relatively weak stabilization energy of hnRNPA2 fibrils compared to irreversible amyloid as the energy barrier between monomers associated with the fibril end or freely floating is much lower. The mechanism of action that our structure suggests is that hnRNPA2 fibrils cannot form when associated with the Kap β 2 via the PYNLS⁴¹ because the PYNLS is required to support the steric zipper motif that drives fibril formation².

Our cryoEM mC-hnRNPA2-LCD structure is consistent with and presents more evidence to support Guo et al.'s⁴¹ discovery that the PYNLS is included in the structure yet not completely buried in the middle of the fibril core (Fig. 2c, d), which could allow chaperones such as Kap β 2⁴² to engage and melt the hnRNPA2-LCD hydrogel.

Does the mCherry-tag affect the structure of mC-hnRNPA2-LCD fibrils? We actively sought to characterize the hnRNPA2 LCD fibril structure without the mCherry tag; however, we found that hnRNPA2 LCD alone is highly insoluble and tends to aggregate. We thus included the mCherry tag in our experiments. mCherry is visible during cryoEM processing. As shown by EM images, the width of the mC-hnRNPA2-LCD fibril (~20 nm) (Supplementary Fig. 9a) is significantly larger than that of our hnRNPA2-LCD fibril core model (2.6–6.7 nm) (Supplementary Fig. 9d, e). During cryoEM data processing, we found globular densities surrounding the fibrils in low-resolution 2D classifications (Supplementary Fig. 9b), and these globular densities were averaged into a fuzzy coat in high-resolution 2D classifications and 3D reconstruction (Supplementary Figs. 3c and 9d). The width of the fibril including the globular densities or fuzzy coat in 2D classification is about 22 nm which matches the width of the

fibrils measured in EM micrographs. The average diameter of each globular density is about 2.9 nm and is compatible with the diameter of the crystal structure of mCherry protein⁴³ (2.8 nm, PDB 2H5Q), which suggests these globular densities correspond to mCherry (Supplementary Fig. 9c), as shown by the in-scale fitting of our model of mC-hnRNPA2-LCD fibril and the crystal structure of mCherry to the averaged 2D class image (Supplementary Fig. 9c). There are three reasons that we consider innocuous the effect of such a large tag on the core structure. First, there are 86 amino acids between the mCherry-tag and the start of the fibril core (N-terminal G263), including a four-residue linker and the beginning segment of the LCD. We think that an 86-residue-long flexible peptide allows enough freedom to accommodate the mCherry tags without distorting the fibril core structure. When the fluorescent tag is sufficiently separated from the fibril core, the tag can freely fold around the fibril core as a “fuzzy coat”, so that fibrillization and core packing are not disturbed⁴⁴. Second, the biological, full-length hnRNPA2 contains two globular N-terminal RRM domains totaling 193 residues. Although the mCherry-tag is a little larger than the RRM domains, it is possible that the mCherry tag provides a mimic of the natural RRM domains in the full-length fibril. Protein–RNA interactions are important for assembling RNP granules in that RNA molecules act as scaffolds for multivalent RNA-binding proteins⁴⁵ such as hnRNPA2. These globular densities of mCherry suggest a potential arrangement of the RRM domains as they wrap around the hnRNPA2-LCD fibril in vivo. With enough sequence length between the RRM domains and the fibril core-forming region, the RRM domains could interact with RNA molecules to facilitate the RNP granule assemblies⁴⁶. Third, the mCherry tag “fuzzy coat” is not visible in the cryoEM 3D classification (Supplementary Fig. 9d), suggesting there are no disruptive interactions between the large mCherry tag and the hnRNPA2 LCD fibril core. Thus, the mCherry tag may suggest a model for fibril function.

Our studies indicate that hnRNPA2 fibrils together with other RNPs such as FUS share intrinsic structural and energetic properties that distinguish them from pathogenic amyloid in two major ways: (1) more LARKS motifs and fewer steric zippers, (2) enrichment of polar residues and scarcity in hydrophobic residues. These functional amyloid-like fibrils are likely the constituents of liquid condensates that contain proteins with LCDs. Experiments to detect the cross- β diffraction signal from fibrils of hnRNPA2 in solution are ongoing and made challenging due to background scattering arising from solvent and the β -sheet-rich mCherry tag (Supplementary Fig. 9). High protein concentration or mutations can drive such functional fibrils into more stable pathogenic amyloid fibrils. Cells need to maintain a delicate thermodynamic balance: biomolecules need to be concentrated enough to overcome the entropic loss associated with assembly into cellular condensates. Yet condensates can be easily converted by mutations, crossing a high kinetic barrier⁴⁷ to form irreversible fibrils in MLOs that feed forward into disease states.

Methods

Materials and purification of mCh-hnRNPA2-LCD fusion protein. The construct for overexpression of mCherry-hnRNPA2-LCD fusion protein was provided by Dr. Masato Kato of University of Texas, Southwestern, and has the sequence shown in Supplementary Fig. 10. Protein overexpression and purification procedure was adapted from the protocol by Kato et al. (2012)¹. Protein was overexpressed in *E. coli* BL21(DE3) cells with 0.5 mM IPTG at 25 °C for overnight. LB media with 0.1 mg ml⁻¹ ampicillin was used for cell culture. Harvested cells were resuspended in lysis buffer containing 50 mM Tris–HCl pH 8.0, 500 mM NaCl, 2 M guanidinium HCl, 2 mM TCEP, and HaltTM protease inhibitor cocktail (Thermo Scientific) for 30 min on ice, and then sonicated. The cell lysate was centrifuged at 32,000 \times g for an hour. The supernatant was filtered and loaded onto a HisTrap HP column (GE healthcare) for purification. The HisTrap column was pre-equilibrated with the lysis buffer. After proteins were loaded onto the column, proteins were washed with the lysis buffer until the UV280 spectrum line became flat. The sample then

was washed with a gradient from 100% wash buffer containing 25 mM Tris-HCl pH 8.0, 150 mM NaCl, 2 M Guanidine HCl, 20 mM imidazole, and 2 mM TCEP to 100% elution buffer containing 25 mM Tris-HCl pH 8.0, 150 mM NaCl, 2 M Guanidine HCl, 300 mM imidazole, and 2 mM TCEP. Eluted proteins were flash frozen by liquid nitrogen and stored at -80°C for future use.

Formation of mCherry-hnRNP2-LCD hydrogels. Purified mCherry-hnRNP2-LCD fusion proteins were dialyzed overnight at room temperature against a dialyzing buffer containing 20 mM Tris-HCl pH 7.5, 200 mM NaCl, 20 mM BME, 0.5 mM EDTA, and 0.1 mM PMSF. The protein solutions were concentrated to 40–80 mg ml⁻¹. The protein solutions (~100 μl) were filled into tightly sealed 1.5 ml silicon tubes, and the tubes were incubated at 4°C for 1–3 days.

Negative stain TEM and X-ray diffraction. All protein samples for TEM were diluted 10 times using dialysis buffer. Samples for TEM were prepared by applying 4 μl of sample on glow-discharged 400 mesh carbon-coated formvar support films mounted on copper grids (Ted Pella, Inc.). The samples were allowed to adhere for 2 min and 30 s, and washed twice with water. The samples were then stained for 2 min with 2% uranyl acetate and allowed to dry for 1 min. Each grid was inspected using a T12(FEI) electron microscope.

For fiber diffraction, the procedure followed the protocol described by Rodriguez et al.⁴⁸. The hydrogel sample placed between two capillary glass rods, and allowed to air dry. When the fibrils are completely dry, the glass rods with fibrils aligned in between were mounted on a brass pin for x-ray diffraction. For homogenous solution, 10 μl of 60 mg ml⁻¹ protein solution is pipetted into a PET sleeve and then mounted on a brass pin. Buffer was used as a control and used for background subtraction. X-ray diffraction data were collected at beamline 24-ID-E of the Advanced Photon Source, Argonne National Laboratory, Argonne, IL, USA, at a wavelength of 0.979 Å and temperature of 100 K. Data were collected using 2.5° oscillations and 450 mm detector distance with an EIGER detector. The results were analyzed using the Adxv software⁴⁹.

The 3D classification of mCherry-hnRNP2-LCD structure indicates the helical rise of the fibrils is 4.8 Å. This is different from the results we got from the hydrogel fiber diffraction, showing the inter-strand spacing to be 4.7 Å. We speculated that this difference is due to the sample preparation. For fiber diffraction, fibrils are dried between the two glass rods at room temperature for hours before being shot with X-ray. Yet CryoEM samples are dried by being blotted for only several seconds. Fibrils being drier might lead to a denser packing of the structures. Therefore in vitro experiments, attentions should be given to the sample preparation steps.

Reversibility assay of mCherry-hnRNP2-LCD hydrogels. Bubbles were introduced to the hydrogels as a way to tell if the hydrogels are reversible. Hydrogels were heated up from 4 to 75°C with a 10°C increment, at each temperature samples were incubated for 10 min in a PCR machine. 2 μl of samples at each temperature were taken and diluted 10 times with the dialysis buffer, and checked by negative stain EM.

CryoEM data collection, reconstruction, and model building. 2.5 μl of diluted hydrogel samples at a concentration of 0.43 mg ml⁻¹ were applied to glow-discharged Quantifoil Cu R1.2/1.3, 300 mesh carbon grids. Samples were blotted with filter paper to remove excess sample and then plunge-frozen in liquid ethane using a Vitrobot Mark IV (FEI). Cryo-EM data were collected on a Gatan K2 Summit direct electron detector on a Titan Krios (FEI) microscope equipped with a Gatan Quantum LS/K2 Summit direct electron detection camera (operated with 300 kV acceleration voltage and slit width of 20 eV). Super-resolution movies were acquired with a pixel size of 1.07 Å pixel⁻¹ (0.535 Å pixel⁻¹ in super-resolution movie frame). Thirty movie frames were recorded each with a frame rate of 5 Hz using a dose rate of 1.15 e⁻ Å⁻² frame⁻¹ for a final dose of 34.5 e⁻ Å⁻² on the sample. Automated data collection was driven by the Leginon automation software package⁵⁰. 2935 micrographs were collected with a defocus range from 0.8 to 5.1 μm .

Micrographs summing all frames were all corrected for gain reference and then micrographs with a group of three frames were used to estimate the contrast transfer function using CTFIND 4.1.8⁵¹. Unblur⁵² was then used to correct beam-induced motion with dose weighting and anisotropic magnification correction, leading to a physical pixel size of 1.064 Å pixel⁻¹. Micrographs with crystalline ice, severe astigmatism, or obvious drift were discarded. All subsequent data processing were performed using RELION 2.0^{53,54}.

All filaments were picked manually using EMAN2 e2heliboxer.py⁵⁵. Particles were first extracted using a box size of 1024 and 686 pixels with an inter-box distance of 10% of the box length. 2D classification using 1024 pixel particles was used to estimate the fibril pitch and helical parameters. We also performed 2D classifications with 686 pixel particles to select particles for future 3D classification. We performed Class3D jobs with three classes and manually controlled the tau_fudge factor and healpix_order to obtain resolutions around 6–7 Å, using an elongated Gaussian blob as an initial reference. We selected particles that contribute to the highest resolution class and generated an initial 3D reconstruction by running Class3D with 1 class. To obtain a higher resolution reconstruction, we

re-extracted particles with a box size of 224 pixels from the fibril tubes containing the Class3D-selected 686 pixel particles. All 224 pixel particles were used directly for two rounds of 3D classification. The final subset of selected particles was used for high-resolution gold-standard refinement as described previously⁵⁴. The final overall resolution estimate was evaluated to be 3.1 Å based on the 0.143 FSC cutoff⁵⁶. Projections from the final reconstruction closely match the 2D class averages, helping to validate the reconstruction.

The refined map was sharpened using phenix.auto_sharpen at the resolution cutoff⁵⁷, and a near-atomic resolution model was built de novo into the sharpened map using COOT⁵⁸. We generated a five-layer model using the helical parameters from the final 3D refinement and then refined the structure using phenix.real_space_refine⁵⁹. After the last round of refinement, we adjusted the residue's phi/psi angles to facilitate main chain hydrogen-bonding, and the final model was validated using phenix.comprehensive_validation^{60,61}. All the statistics are summarized in Table 1.

Solvation energy calculation. The solvation energy was calculated based on work published previously⁶². The solvation energy for each residue was calculated by the sum of the products of the area buried for each atom and the corresponding atomic solvation parameters. The overall energy was calculated by the sum of energies of all residues. Different colors were assigned to each residue, instead of each atom, in the solvation energy map. The energy reported for FUS in Table 2 is the average over 20 NMR models.

3D environment compatibility search. 3D environment profiling is performed based on the method described previously³⁰. Briefly, an environment category was assigned for the side chains of each residue, and a profile was created using the model structure and its homologous structures based on three features: (1) the secondary structure the residue is in, (2) the fraction of side chain that is covered by polar atoms, and (3) the area buried. A 3D environment profile was created using our mCherry-hnRNP2-LCD fibril core structure.

Peptides stabilization energy calculation. The hnRNP2 fibril structure is divided into β -sheets composed of six-residue long contiguous segments. Then the surface area buried between all pairwise combinations of these sheets is measured. If the area buried in the dry interface is $>80 \text{ \AA}^2$, the pair of segments is kept as a potential zipper. If the area is $<80 \text{ \AA}^2$, the pair of segments is discarded due to a lack of enough overlap. The energy of the overlapping pairwise segments is measured using our solvation energy calculation described above. The histogram summarizes the energies of 1657 potential zippers extracted from 12 PDB entries of 5 disease-related amyloid protein: amyloid- β (PDB: 5KK3), α -synuclein (PDB: 2N0A, 6CU7, 6CU8), Serum amyloid A (PDB: 6DSO), tau (PDB: 5O3L, 5O3T, 6GX5), and TDP-43 (PDB: 6N37, 6N3A, 6N3B, 6N3C).

Peptide aggregation formation. Both wildtype and mutant peptide segments are dissolved in water to a final concentration of 10 mg ml⁻¹ in 1.5 ml silicon tubes with parafilm seal. Samples were incubated at 25°C in a Torrey Pine Scientific shaker at level 9 for 90 h and then examined by TEM.

Segment crystallization. Crystals of the mutant peptide segment were grown by hanging-drop vapor diffusion. The segment was dissolved in water to a final concentration of 9.69 mg ml⁻¹ with 31 mM lithium hydroxide. The reservoir solution contains 0.15 M ammonium acetate, 35% MPD, and 0.1 M Bis-Tris pH 5.5, which is optimized based on the original hit in the commercial kit JCSG 96-well block platescreen from Molecular Dimensions, well H5. Hanging drop contains a 1:1 solution of protein:reservoir.

X-ray data collection, processing, and structural analysis. X-ray diffraction data from GNYNVF segment crystals were collected at beamline 24-ID-E of the Advanced Photon Source, Argonne National Laboratory, Argonne, IL, USA, at a wavelength of 0.979 Å and temperature of 100 K. Data were collected using 2.5° oscillations and 150 mm detector distance with an EIGER detector. Indexing and integration of the reflections were done using XDS in space group P2₁ and scaled with XSCALE to a resolution of 1.1 Å⁶³. The structure was solved by direct method using SHELXD⁶⁴. The atomic-resolution model was manually built and adjusted using COOT⁵⁸. The model is then refined by Refmac⁶⁵ with a final $R_{\text{work}}/R_{\text{free}}$ of 7.5/10.7(%) and 100% of Ramachandran angles favored. The crystal structure image was generated using Pymol. Area buried (Ab) and shape complementarity (Sc) were calculated based on work published previously^{66,67}. All the statistics are summarized in Table 3.

Reporting summary. Further information on research design is available in the Nature Research Reporting Summary linked to this article.

Data availability

Atomic coordinates and cryoEM map of the hnRNP2 LCD fibril were deposited in the Protein Data Bank and Electron Microscopy Data Bank with entry codes: 6WQK and

EMD-21871. The crystal structure GNYNVF was deposited in the Protein Data Bank with entry code: [6WPQ](https://www.rcsb.org/entry/6WPQ). Other data are available from the corresponding author upon reasonable request.

Received: 21 April 2020; Accepted: 14 July 2020;

Published online: 14 August 2020

References

- Kato, M. et al. Cell-free formation of RNA granules: low complexity sequence domains form dynamic fibers within hydrogels. *Cell* **149**, 753–767 (2012).
- Kim, H. J. et al. Mutations in prion-like domains in hnRNPA2B1 and hnRNPA1 cause multisystem proteinopathy and ALS. *Nature* **495**, 467–473 (2013).
- Amaya, J., Ryan, V. H. & Fawzi, N. L. The SH3 domain of Fyn kinase interacts with and induces liquid–liquid phase separation of the low-complexity domain of hnRNPA2. *J. Biol. Chem.* **293**, 19522–19531 (2018).
- White, R. et al. Activation of oligodendroglial Fyn kinase enhances translation of mRNAs transported in hnRNP A2-dependent RNA granules. *J. Cell Biol.* **181**, 579–586 (2008).
- Gomes, E. & Shorter, J. The molecular language of membraneless organelles. *J. Biol. Chem.* **294**, 7115–7127 (2019).
- Xiang, S. et al. The LC domain of hnRNPA2 adopts similar conformations in hydrogel polymers, liquid-like droplets and nuclei. *Cell* **163**, 829–839 (2015).
- Wang, J. et al. A molecular grammar governing the driving forces for phase separation of prion-like RNA binding proteins. *Cell* **174**, 688–699.e16 (2018).
- Ryan, V. H. et al. Mechanistic view of hnRNPA2 low-complexity domain structure, interactions, and phase separation altered by mutation and arginine methylation. *Mol. Cell* **69**, 465–479.e7 (2018).
- Patel, A. et al. A liquid-to-solid phase transition of the ALS protein FUS accelerated by disease mutation. *Cell* **162**, 1066–1077 (2015).
- Lin, Y., Protter, D. S. W., Rosen, M. K. & Parker, R. Formation and maturation of phase separated liquid droplets by RNA binding proteins. *Mol. Cell* **60**, 208–219 (2015).
- Mackenzie, I. R. et al. TIA1 mutations in amyotrophic lateral sclerosis and frontotemporal dementia promote phase separation and alter stress granule dynamics. *Neuron* **95**, 808–816.e9 (2017).
- Murakami, T. et al. ALS/FTD mutation-induced phase transition of FUS liquid droplets and reversible hydrogels into irreversible hydrogels impairs RNP granule function. *Neuron* **88**, 678–690 (2015).
- Gui, X. et al. Structural basis for reversible amyloids of hnRNPA1 elucidates their role in stress granule assembly. *Nat. Commun.* **10**, 1–12 (2019).
- Murray, D. T. et al. Structure of FUS protein fibrils and its relevance to self-assembly and phase separation of low-complexity domains. *Cell* **171**, 615–627.e16 (2017).
- Cao, Q., Boyer, D. R., Sawaya, M. R., Ge, P. & Eisenberg, D. S. Cryo-EM structures of four polymorphic TDP-43 amyloid cores. *Nat. Struct. Mol. Biol.* **26**, 619–627 (2019).
- Guenther, E. L. et al. Atomic structures of TDP-43 LCD segments and insights into reversible or pathogenic aggregation. *Nat. Struct. Mol. Biol.* **25**, 463–471 (2018).
- Eisenberg, D. S. & Sawaya, M. R. Structural studies of amyloid proteins at the molecular level. *Annu. Rev. Biochem.* **86**, 69–95 (2017).
- Zhang, Z. C. & Chook, Y. M. Structural and energetic basis of ALS-causing mutations in the atypical proline–tyrosine nuclear localization signal of the Fused in Sarcoma protein (FUS). *Proc. Natl Acad. Sci. USA* **109**, 12017–12021 (2012).
- Liberta, F. et al. Cryo-EM fibril structures from systemic AA amyloidosis reveal the species complementarity of pathological amyloids. *Nat. Commun.* **10**, 1104 (2019).
- Kollmer, M., Close, W., Funk, L. et al. Cryo-EM structure and polymorphism of A β amyloid fibrils purified from Alzheimer’s brain tissue. *Nat Commun* **10**, 4760 (2019).
- Luo, F. et al. Atomic structures of FUS LC domain segments reveal bases for reversible amyloid fibril formation. *Nat. Struct. Mol. Biol.* **25**, 341–346 (2018).
- Hughes, M. P. et al. Atomic structures of low-complexity protein segments reveal kinked β sheets that assemble networks. *Science* **359**, 698–701 (2018).
- Goldschmidt, L., Teng, P. K., Riek, R. & Eisenberg, D. Identifying the amyloids, proteins capable of forming amyloid-like fibrils. *Proc. Natl Acad. Sci. USA* **107**, 3487–3492 (2010).
- Sawaya, M. R. et al. Atomic structures of amyloid cross-beta spines reveal varied steric zippers. *Nature* **447**, 453–457 (2007).
- Fitzpatrick, A. W. P. et al. Cryo-EM structures of tau filaments from Alzheimer’s disease. *Nature* **547**, 185–190 (2017).
- Gremer, L. et al. Fibril structure of amyloid- β (1–42) by cryo-electron microscopy. *Science* **358**, 116–119 (2017).
- Murray, D. T. et al. Structural characterization of the D290V mutation site in hnRNPA2 low-complexity-domain polymers. *Proc. Natl Acad. Sci. USA* **115**, E9782–E9791 (2018).
- Semenov, A. N. & Rubinstein, M. Thermoreversible gelation in solutions of associative polymers. 1. Statics. *Macromolecules* **31**, 1373–1385 (1998).
- Rubinstein, M. & Semenov, A. N. Thermoreversible gelation in solutions of associating polymers. 2. Linear dynamics. *Macromolecules* **31**, 1386–1397 (1998).
- Bowie, J. U., Lüthy, R. & Eisenberg, D. A method to identify protein sequences that fold into a known three-dimensional structure. *Science* **253**, 164–170 (1991).
- Nelson, R. et al. Structure of the cross- β spine of amyloid-like fibrils. *Nature* **435**, 773–778 (2005).
- Ding, X. et al. Amyloid-forming segment induces aggregation of FUS-LC domain from phase separation modulated by site-specific phosphorylation. *J. Mol. Biol.* **432**, 467–483 (2020).
- Falcon, B. et al. Structures of filaments from Pick’s disease reveal a novel tau protein fold. *Nature* **561**, 137–140 (2018).
- Colvin, M. T. et al. Atomic resolution structure of monomeric A β 42 amyloid fibrils. *J. Am. Chem. Soc.* **138**, 9663–9674 (2016).
- Lührs, T. et al. 3D structure of Alzheimer’s amyloid-beta(1–42) fibrils. *Proc. Natl Acad. Sci. USA* **102**, 17342–17347 (2005).
- Schmidt, M. et al. Peptide dimer structure in an A β (1–42) fibril visualized with cryo-EM. *Proc. Natl Acad. Sci. USA* **112**, 11858–11863 (2015).
- Wälti, M. A. et al. Atomic-resolution structure of a disease-relevant A β (1–42) amyloid fibril. *Proc. Natl Acad. Sci. USA* **113**, E4976–E4984 (2016).
- Xiao, Y. et al. A β (1–42) fibril structure illuminates self-recognition and replication of amyloid in Alzheimer’s disease. *Nat. Struct. Mol. Biol.* **22**, 499–505 (2015).
- Li, B. et al. Cryo-EM of full-length α -synuclein reveals fibril polymorphs with a common structural kernel. *Nat. Commun.* **9**, 1–10 (2018).
- Anfinsen, C. B. Principles that govern the folding of protein chains. *Science* **181**, 223–230 (1973).
- Guo, L. et al. Nuclear-import receptors reverse aberrant phase transitions of RNA-binding proteins with prion-like domains. *Cell* **173**, 677–692.e20 (2018).
- Lee, B. J. et al. Rules for nuclear localization sequence recognition by karyopherin beta 2. *Cell* **126**, 543–558 (2006).
- Shu, X., Shaner, N. C., Yarbrough, C. A., Tsiens, R. Y. & Remington, S. J. Novel chromophores and buried charges control color in mFruits. *Biochemistry* **45**, 9639–9647 (2006).
- Kaniyappan, S. et al. FRET-based Tau seeding assay does not represent prion-like templated assembly of Tau filaments. *Mol. Neurodegener.* **15**, 39 (2020).
- Van Treck, B. & Parker, R. Emerging roles for intermolecular RNA–RNA interactions in RNP assemblies. *Cell* **174**, 791–802 (2018).
- Protter, D. S. W. et al. Intrinsically disordered regions can contribute promiscuous interactions to RNP granule assembly. *Cell Rep.* **22**, 1401–1412 (2018).
- Franzmann, T. M. & Alberti, S. Prion-like low-complexity sequences: Key regulators of protein solubility and phase behavior. *J. Biol. Chem.* **294**, 7128–7136 (2019).
- Rodriguez, J. A. et al. Structure of the toxic core of α -synuclein from invisible crystals. *Nature* **525**, 486–490 (2015).
- Arvai, A. Adxv. *Adxv—A Program to Display X-Ray diffraction Images* <https://www.scripps.edu/tainer/arvai/adxv.html> (2015).
- Suloway, C. et al. Automated molecular microscopy: the new Legimon system. *J. Struct. Biol.* **151**, 41–60 (2005).
- Rohou, A. & Grigorieff, N. CTFFIND4: fast and accurate defocus estimation from electron micrographs. *J. Struct. Biol.* **192**, 216–221 (2015).
- Grant, T. & Grigorieff, N. Measuring the optimal exposure for single particle cryo-EM using a 2.6 Å reconstruction of rotavirus VP6. *eLife* **4**, e06980 (2015).
- He, S. & Scheres, S. H. W. Helical reconstruction in RELION. *J. Struct. Biol.* **198**, 163–176 (2017).
- Scheres, S. H. W. RELION: implementation of a Bayesian approach to cryo-EM structure determination. *J. Struct. Biol.* **180**, 519–530 (2012).
- Tang, G. et al. EMAN2: an extensible image processing suite for electron microscopy. *J. Struct. Biol.* **157**, 38–46 (2007).
- Chen, S. et al. High-resolution noise substitution to measure overfitting and validate resolution in 3D structure determination by single particle electron cryomicroscopy. *Ultramicroscopy* **135**, 24–35 (2013).
- Terwilliger, T. C., Sobolev, O. V., Afonine, P. V. & Adams, P. D. Automated map sharpening by maximization of detail and connectivity. *Acta Crystallogr. Sect. Struct. Biol.* **74**, 545–559 (2018).
- Emsley, P., Lohkamp, B., Scott, W. G. & Cowtan, K. Features and development of Coot. *Acta Crystallogr. D* **66**, 486–501 (2010).
- Afonine, P. V. et al. Real-space refinement in PHENIX for cryo-EM and crystallography. *Acta Crystallogr. Sect. Struct. Biol.* **74**, 531–544 (2018).
- Adams, P. D. et al. PHENIX: a comprehensive Python-based system for macromolecular structure solution. *Acta Crystallogr. D* **66**, 213–221 (2010).
- Chen, V. B. et al. MolProbity: all-atom structure validation for macromolecular crystallography. *Acta Crystallogr. D* **66**, 12–21 (2010).

62. Eisenberg, D., Wesson, M. & Yamashita, M. Interpretation of protein folding and binding with atomic solvation parameters. *Chem. Scr.* <https://eurekamag.com/research/032/001/032001963.php> (1989).
63. Kabsch, W. Integration, scaling, space-group assignment and post-refinement. *Acta Crystallogr. D* **66**, 133–144 (2010).
64. Sheldrick, G. M. A short history of SHELX. *Acta Crystallogr. A* **64**, 112–122 (2008).
65. Murshudov, G. N., Vagin, A. A. & Dodson, E. J. Refinement of macromolecular structures by the maximum-likelihood method. *Acta Crystallogr. D* **53**, 240–255 (1997).
66. Lawrence, M. C. & Colman, P. M. Shape complementarity at protein/protein interfaces. *J. Mol. Biol.* **234**, 946–950 (1993).
67. Collaborative Computational Project, Number 4. The CCP4 suite: programs for protein crystallography. *Acta Crystallogr. D* **50**, 760–763 (1994).

Acknowledgements

We thank Peng Ge of the Electron Imaging Center for NanoMachines (EICN) for help with cryoEM data collection and processing; We are grateful to Dr. Masato Kato and Dr. Steven L. McKnight from University of Texas, Southwestern Medical Center for sending us the construct of mCherry-hnRNP2-LCD and their advice on sample preparation and we thank the Whitcome Pre-doctoral Training Program, UCLA Molecular Biology Institute for funding, NSF MCB 1616265, and NIH RF1 AG054022 for support. This work used NE-CAT beamline 24-ID-E (GM124165) and an Eiger detector (OD021527) at the APS (DE-AC02-06CH11357).

Author contributions

J.L. designed experiments, purified constructs, crystallized peptides, prepared cryo-EM samples, performed X-ray and cryo-EM data collection and processing, and performed data analysis. Q.C. performed cryoEM data processing. D.R.B. assisted in cryoEM data collection and processing. M.P.H. performed LARKS prediction and assisted in model building. M.R.S. performed solvation energy calculation. M.R.S. and D.C. assisted in X-ray data collection and processing and model building. All authors analyzed the results and wrote the manuscript. D.S.E. supervised and guided the project.

Competing interests

D.S.E. is an advisor and equity shareholder in ADRx, Inc. The other authors declare no competing interests.

Additional information

Supplementary information is available for this paper at <https://doi.org/10.1038/s41467-020-17905-y>.

Correspondence and requests for materials should be addressed to D.S.E.

Peer review information *Nature Communications* thanks the anonymous reviewer(s) for their contribution to the peer review of this work. Peer reviewer reports are available.

Reprints and permission information is available at <http://www.nature.com/reprints>

Publisher's note Springer Nature remains neutral with regard to jurisdictional claims in published maps and institutional affiliations.



Open Access This article is licensed under a Creative Commons Attribution 4.0 International License, which permits use, sharing, adaptation, distribution and reproduction in any medium or format, as long as you give appropriate credit to the original author(s) and the source, provide a link to the Creative Commons license, and indicate if changes were made. The images or other third party material in this article are included in the article's Creative Commons license, unless indicated otherwise in a credit line to the material. If material is not included in the article's Creative Commons license and your intended use is not permitted by statutory regulation or exceeds the permitted use, you will need to obtain permission directly from the copyright holder. To view a copy of this license, visit <http://creativecommons.org/licenses/by/4.0/>.

© The Author(s) 2020