

ORIGINAL INVESTIGATION

Open Access



# Inflammatory cytokines in type 2 diabetes mellitus as facilitators of hypercoagulation and abnormal clot formation

Shehan N. Randeria<sup>1</sup>, Greig J. A. Thomson<sup>1</sup> , Theo A. Nell<sup>1</sup> , Timothy Roberts<sup>1,2\*</sup> and Ethersia Pretorius<sup>1\*</sup>

## Abstract

**Background:** The global burden of type 2 diabetes mellitus (T2DM), together with the presence of cardiovascular risk in this population, is reaching pandemic levels. A prominent feature of T2DM is chronic and systemic inflammation, with the accompanying presence of circulating and dysregulated inflammatory biomarkers; which in turn is associated with abnormal clot formation.

**Methods:** Here, we investigate the correlation between abnormal blood clotting, using thromboelastography (TEG), clot ultrastructure using scanning electron microscopy (SEM) and the presence of a dysregulated inflammatory cytokine profile, by examining various circulating biomarkers.

**Results:** Our results show that many biomarkers, across TEG, cytokine and lipid groups, were greatly dysregulated in the T2DM sample. Furthermore, our T2DM sample's coagulation profiles were significantly more hypercoagulable when compared to our healthy sample, and ultrastructural analysis confirmed a matted and denser clot structure in the T2DM sample.

**Conclusions:** We suggest that dysregulated circulating molecules may in part be responsible for a hypercoagulable state and vascular dysfunction in the T2DM sample. We propose further that a personalized approach could be of great value when planning treatment and tracking the patient health status after embarking on a treatment regimes, and that looking to novel inflammatory and vascular biomarkers might be crucial.

**Keywords:** Type 2 diabetes mellitus, Vascular dysfunction, Biomarkers, Systemic inflammation

## Background

The global burden of diabetes was estimated at ~420 million during 2014 and has doubled since 1980 where the prevalence was ~5% compared to ~9% for adults diagnosed with type-2 diabetes mellitus (T2DM) [1]. Premature mortality rates resulting from T2DM and thromboembolic cardiovascular disease, are estimated to be as high as 43% in both men and women before the age of 70 years [2–5]. A most prominent feature of this condition is chronic (low-grade) inflammation, with the accompanying presence of circulating and dysregulated

inflammatory biomarkers. Such a dysregulated circulating inflammatory marker profile is associated both with a hypercoagulable state and hypofibrinolysis [6, 7]. Obesity, which is strongly associated with the prevalence and incidence of T2DM, has been shown to induce low grade (chronic) inflammation [8–10] and insulin resistance (IR) [11, 12]. Chronic multifactorial inflammation originating mostly from an imbalanced diet and lack of physical exercise, contribute towards the development of T2DM, and is well-known in known inflammatory disease [13]. Therefore, the complications as a result of low-grade inflammation and diet in T2DM, include mainly cardiovascular disease (CVD), mainly due to hyperglycaemia, and in turn might enhance dysregulated coagulation [2, 14]. Ultimately, an important determinant behind the

\*Correspondence: timothy-roberts@outlook.com; resiap@sun.ac.za

<sup>1</sup> Department of Physiological Sciences, Stellenbosch University, Private Bag X1, Matieland 7602, South Africa

Full list of author information is available at the end of the article



current global T2DM epidemic is IR in overweight and obese individuals [15].

For T2DM patients disease profiling, clinicians typically measure C-reactive protein (CRP or highly sensitive (hs)-CRP), blood lipid profiles and glucose/Hb1Ac levels. Measuring CRP and lipid profiles have been shown to predict the development of T2DM in non-diabetics irrespective of adiposity and IR [16]. Traditionally, chronically elevated blood glucose concentrations are indicative of T2DM risk [15] and both a persistent dysregulated blood glucose level and abnormal lipid profile would typically confirm T2DM. Type 2 diabetic individuals also have a greater risk for cardiovascular complications [17]. Other measures such as blood pressure and BMI would typically also be taken into consideration when a treatment regime is planned. There is a plethora of evidence describing the correlation between CRP, monocyte chemoattractant protein-1 (MCP-1), tumor necrosis factor- $\alpha$  (TNF- $\alpha$ ) and IL-1 $\beta$  in obese T2DM patients [18, 19].

Due to the pandemic nature of T2DM, and increased cardiovascular risk, there is a growing need for innovative strategies to change our approach in both the identification and successful treatment of such individuals. A much more focussed approach is therefore needed in patient care of T2DM, by regularly assessing systemic inflammation and cardiovascular risk in this population, and one such approach would be to turn to the use of circulating biomarkers to track disease progression, as well as medication effectiveness.

Inflammatory (circulating) biomarkers, when dysregulated, have been identified as key players in causing abnormal clot formation (see Additional file 1: Tables S1 and S2, for a summary of inflammatory biomarkers as well as their role in blood dysregulated blood clotting (both aberrant hypercoagulation and hypofibrinolysis) both in disease and experimental inquisition.

Mutie et al. [15] argue that the emergence of biomarker technologies has allowed more targeted therapeutic strategies (precision medicine) for diabetes prevention; however, currently, the use of such technologies are largely confined to pharmacotherapy. Although precision diabetes medicine is confined to pharmacotherapy, using biomarkers to personalise lifestyle recommendations, in T2DM treatment is becoming a real possibility [20]. Both personalised and precision medicine approaches in T2DM should therefore be an important and urgent consideration, as many individuals with T2DM have multiple (cardiovascular) comorbidities [21].

The current paper investigates hypercoagulation, using thromboelastography of platelet poor plasma (PPP), and PPP clot ultrastructure, using clots prepared with thrombin, and viewed with a scanning electron microscope in healthy and T2DM individuals. Furthermore, we study

levels of 20 circulating cytokine biomarkers and how they might differ between healthy individuals, and individuals with T2DM. We also look at intercellular adhesion molecule-1 (ICAM-1), vascular adhesion molecule-1 (VCAM-1), and serum amyloid A (SAA). The increase in the concentrations of (soluble) sVCAM-1 and sICAM-1 reflects the degree of endothelial damage, and ultimately may impact on cardiovascular risk if it is chronically increased. Levels of SAA, which is a major acute phase protein in humans, are increased up to 1000-fold upon infection, trauma, cancer or other inflammatory events, and it plays a key role in regulating the inflammatory response [22]. Dysregulation of the circulating cytokines that we measure in this paper, are also closely linked to dysregulation of sICAM-1, sVCAM-1 and SAA. The pro-inflammatory cytokines we included in this study, have also been associated with platelet (hyper) activation, as well as erythrocyte dysfunction, while CRP dysregulation is directly linked to dysregulation of some of these molecules, and a strong indication of systemic inflammation. CRP is a part of the member of the pentraxin family which are pattern recognition proteins that play an integral role in the innate immune system [23]. When secreted from the liver in response to IL-6, CRP forms an annular pentameric protein shape which then circulates throughout the body in blood plasma [24]. Interleukin-6 (IL-6) and its downstream product, CRP, are therefore both well-known inflammatory molecules. Importantly, due to an increase in IL-6, circulating CRP levels can increase up to 1000 times during disease or inflammation [25]. We also included analysis of levels of HbA1c and lipid profiles, as these are markers that can confirm hyperglycemia and systemic inflammation.

The following paragraphs briefly discuss some of the main interactions between circulating cytokines and sICAM-1, sVCAM-1 and SAA. *ICAM-1* is referred to as Cluster of Differentiation 54 (CD54), is a protein encoded by the *ICAM1* gene which encodes for a glycoprotein located on the cell surface of endothelial cells, as well as cells of the immune system, such as leukocytes [26, 27]. These cells continuously present with ICAM-1 at low levels on their cell membranes, however, when stimulated via TNF- $\alpha$  [28, 29], IL-1 $\beta$ , lipopolysaccharide (LPS) [30] and the presence of reactive oxygen species (ROS) [31], ICAM-1 concentrations greatly increase. ICAM-1 levels have been found to be significantly elevated in T2DM [32], and elevated ICAM-1 may be as a result of elevated TNF- $\alpha$  and IL-1 $\beta$  found in T2DM. However, the increased ICAM-1 may influence T2DM pathogenesis via the binding of monocytes/leukocytes to activated vascular endothelium preceding macrophage and foam cell development [33], a crucial event potentially resulting in T2DM.

VCAM-1, otherwise known as cluster of differentiation 106 (CD106) is a 90-kDa glycoprotein encoded by the VCAM-1 gene [34], may also be of importance in inflammation. VCAM-1 expression similar to ICAM-1, is activated and expressed on the cell membrane of endothelial cells [35] in the presence of various pro-inflammatory cytokines such as TNF- $\alpha$  as well as the presence of ROS [36]. When stimulated by circulating inflammatory cytokines, various ligands bind to the externalised VCAM-1, causing leukocyte to endothelial cell binding which starts a cascade effect whereby ending in VCAM-1-dependent leukocyte trans-endothelial migration [37]. VCAM-1 is also significantly elevated in T2DM [38, 39] and may be one of the leading causes of the abnormal endothelial function and activation that occurs in T2DM [40, 41]. CRP levels are significantly elevated in T2DM and is a strong biomarker for T2DM disease progression and management [42]. SAA presence is also associated with the pathogenesis of chronic inflammatory diseases, such as T2DM, as well as atherosclerosis [43, 44].

Platelet (dys)function and both ICAM-1 and VCAM-1 are also closely linked. Platelet activation and endothelial damage play essential roles in atherosclerosis and thrombin-activated platelet-derived exosomes regulate endothelial cell expression of ICAM-1 [45]. Proteins that are essential for platelet adhesion include P-selectin, von Willebrand factor (vWF), and ICAM-1 [45]. During activation, platelets release thromboxane A<sub>2</sub> (TXA<sub>2</sub>), which may also bind to receptors on platelet membranes. Also binding of locally produced TXA<sub>2</sub> to thromboxane receptors on endothelial cells causes upregulation of ICAM-1 on the cell surface [46]. P-selectin mediates platelet rolling on vascular wall endothelial cells [47], furthermore von Willebrand factor (vWF) is required for platelet adhesion through the platelet receptor GPIIb<sub>a</sub>, and ICAM-1 has been reported to mediate the platelet receptor GPIIb/IIIa-dependent bridging mechanism through fibrinogen [48, 49]. Another platelet receptor of interest is GPVI, which is a collagen receptor on platelets, and it is known that collagen is exposed from endothelial cells, in cardiovascular diseases, and conditions like T2DM. It has been found that there is a positive correlation between a dysregulation between surface expression of platelet GPVI and with the level of ICAM-1 in endothelial cells in disease [50]. Furthermore, platelets tether and roll on P-selectin presented on activated endothelium via P-selectin GP ligand-1 (PSGL)-1 and GPIIb, and arrest via GPIIb–IIIa and fibronectin on endothelial  $\alpha\beta 3$  and ICAM-1 [46]. Platelets constitute the main source of soluble CD40 ligand (sCD40L), expressed on the platelet surface under basal conditions and additionally

translocates to the plasma membrane upon activation. sCD40L induces endothelial upregulation of ICAM-1, VCAM-1, and E-selectin, and thus supports leukocyte recruitment.

Serum amyloid A (SAA) is a generic term for a highly conserved family of acute-phase apolipoproteins synthesised by the liver [43, 51]. The SAA molecules can be divided into two groups, namely the acute phase SAAs that associate with HDL during inflammation; and constitutive SAA, including human SAA4 [52]. Human apo-SAA is a 104 amino acid polypeptide that circulates in plasma bound to high density lipoprotein-3 (HDL3) [53]. However, SAA has an important effect on HDL structure and function during inflammation, as the majority of SAA is an apolipoprotein of high-density lipoprotein HDL [54, 55]. During acute inflammation, SAA secreted from the liver displaces apolipoprotein A-I bound to HDL, with each HDL particle being able to bind and carry several copies of SAA [56], thus becoming the major apolipoprotein of circulating HDL3 [43]. Acute-phase SAA also modifies the biological effects of HDL-C in several conditions [57]. Depending on the extent of inflammation, it has been seen that SAA may increase up to 1000-fold, compared to those in the non-inflammatory state [43]. Consequently, SAA is a well-established (and potent) biomarker for infection and sepsis [58–60]. However, increased SAA is also an important plasma biomarker for predicting future cardiovascular events, and is associated with an increase in thrombotic risk [61, 62] as it is an active participant in the early atherogenic process [63].

CRP is also a known (hyper) activating ligand via platelet receptors and various platelet receptors form complexes on ligand binding, including GPVI with FcR $\gamma$  (chain) after fibrin (ogen) [64–67], collagen, CRP and thrombin binding [68]. After CRP binds to the GPVI/FcR $\gamma$  (chain) complex, a cascade follows, resulting in shedding by metalloproteases such as  $\alpha$ -disintegrin-and-metalloproteinase 10 (ADAM10) [69]. SAA may also cause platelet (hyper) activation. We established that free SAA, added at low physiological levels (30  $\mu\text{g mL}^{-1}$ ), representing a modest acute phase response, caused red blood cell agglutination, platelet activation and aggregation, but without platelet spreading [70]. It was suggested that the highly lipophilic SAA interacts within the platelet cell surface phospholipids (analogous to HDL) to produce these effects. The correlations between vascular injury, circulating dysregulated cytokines and hypercoagulation may therefore be of great importance and point to greater cardiovascular risk in T2DM, and might be used to track disease severity for a more individualized approach in T2DM care.

## Material and materials

### Ethics, consent and permissions

The study received ethical clearance from the Health Research Ethics Committee (HREC) of Stellenbosch University (South Africa) (approval number N17/01/008\_RECIP\_UP.298/2016: E Pretorius) and S18/02/036: G Thomson and E Pretorius. Prior to the commencement of the study, all volunteers were informed of procedures and data collection. Written informed consent was obtained from all participants followed by whole blood sampling in citrated tubes. All participants received a unique number that was used to ensure confidentiality throughout the study. All investigators were certified in Good Clinical Practice and ethical codes of conduct.

### Study design, setting and study population

A cross-sectional design was followed in collaboration with an endocrinologist and physician, who provided whole blood (WB) from T2DM private patients.

### Healthy control sample

Whole blood from healthy controls were collected by a Health Professions Council of South Africa (HPCSA) registered Medical Biological Scientist and phlebotomist (MW: 0010782) at the Department of Physiological Sciences, Stellenbosch University. The total study population consisted of  $n = 87$  volunteers ( $n = 46$  healthy controls, and  $n = 41$  T2DM patients), from which the 20-Plex cytokine analysis, thromboelastography, lipogram and V-Plex vascular injury analysis were conducted.

### Type 2 diabetes mellitus sample

Whole-blood samples were also collected from individuals diagnosed with T2DM and cardiovascular disease at least 3 months prior to screening and without any clinical indication of infection (Society for Endocrinology, Metabolism and Diabetes of South Africa (SEMSDA) guidelines based on American Diabetes Association (ADA) criteria). Diabetic volunteers were recruited with the following inclusion criteria: (i) a confirmed diagnosis of T2DM with cardiovascular disease (ii) males and females older than 35 years. Similarly, healthy controls were included if they were (iii) non-smokers, (iv) not on any contraceptives, (v) not pregnant and/or lactating. Participants who were unable to provide written consent were excluded from the study. To limit and exclude confounding factors, both healthy and diabetic volunteers were only included if they are not diagnosed with tuberculosis, human immunodeficiency virus (HIV) or any malignancies. The inclusion criteria for healthy age-matched volunteers included: (i) no use of chronic medication (ii) no prior history of thrombotic disease or

inflammatory conditions (iii) non-smokers, (iv) not on any chronic antiplatelet therapy/anticoagulant medication or any contraceptive/hormone replacement therapy (v) were not pregnant and/or lactating. Participants who were unable to provide written consent were also excluded from the study.

### Collection of whole blood (WB) and preparation of platelet poor plasma (PPP) samples from healthy controls and T2DM patients

Whole blood from healthy controls and T2DM patients were collected using sterile sampling techniques in citrate and ethylenediaminetetraacetic acid (EDTA) tubes, as well as serum separating tubes (SST) that were kept at room temperature (22 °C) for 30 min. Platelet poor plasma (PPP) were prepared from citrate tubes that were centrifuged at  $3000 \times g$  for 10 min at room temperature ( $\sim 22$  °C). The PPP was subsequently aliquotted into labelled 1.5 mL Eppendorf tubes, and stored at  $-80$  °C until laboratory analysis. EDTA whole blood and SST were analysed by the local PathCare laboratory (Stellenbosch) for glycosylated haemoglobin (HbA1c).

### Thromboelastography (TEG) of platelet poor plasma (PPP)

Clot kinetics/property studies was performed using Thromboelastography (TEG) (Thromboelastograph 5000 Hemostasis Analyzer System), on both control ( $n = 23$ ) and T2DM ( $n = 25$ ) PPP samples. After collection and PPP preparation, all samples were stored at  $-80$  °C until TEG analysis. At the time of TEG analysis, PPP samples were thawed from  $-80$  °C to room temperature. Once samples were completely thawed, 340  $\mu\text{L}$  of PPP were placed in a disposable TEG cup to which 20  $\mu\text{L}$  of  $0.2 \text{ mol L}^{-1} \text{ CaCl}_2$  was added.  $\text{CaCl}_2$  is necessary to reverse the effect of the sodium citrate anticoagulant in the collection tube (i.e. recalcification of blood) and consequently initiate coagulation. The samples were then loaded in the TEG for analysis. The clot parameters that were assessed are presented in Table 1.

### Scanning electron microscopy

In order to form the fibrin clots, 5  $\mu\text{L}$  of purified thrombin (provided by the South African National Blood Service) was added into 10  $\mu\text{L}$  of PPP from healthy controls ( $n = 10$ ) and T2DM ( $n = 10$ ) individuals on 10 mm round glass slides. Immediately after adding the thrombin, the glass slides were washed with  $10 \times$  Gibco™ PBS (phosphate-buffered saline), pH 7.4 (ThermoFisher Scientific, 11594516) before fixing with 4% paraformaldehyde for a minimum of 30 min. Once fixed, samples were washed  $3 \times 3$  min with PBS before a further 30-min fixation step in 1% osmium tetroxide (Sigma-Aldrich, 75632). A final  $3 \times 3$  min PBS wash step was performed before samples

**Table 1 Thromboelastography clot parameters for WB and PPP**

Parameters	Explanation
R value: reaction time; measured in minutes	Time of latency from start of test to initial fibrin formation (amplitude of 2 mm); i.e. initiation time
K value: kinetics; measured in minutes	Time taken to achieve a certain level of clot strength (amplitude of 20 mm); i.e. amplification
Angle (A/Alpha): slope between the traces represented by R and K; measured in degrees	The angle measures the speed at which fibrin build up and cross linking takes place, hence assesses the rate of clot formation; i.e. thrombin burst
Maximal amplitude (MA): measured in mm	Maximum strength/stiffness of clot. Reflects the ultimate strength of the fibrin clot, i.e. overall stability of the clot
Maximum rate of thrombus generation (MRTG): measured in $\text{Dyn cm}^{-2} \text{s}^{-1}$	The maximum velocity of clot growth observed or maximum rate of thrombus generation using G, where G is the elastic modulus strength of the thrombus in dynes per $\text{cm}^{-2}$
Time to maximum rate of thrombus generation (TMRTG): measured in minutes	The time interval observed before the maximum speed of the clot growth
Total thrombus generation (TTG): measured in $\text{Dyn cm}^{-2}$	The clot strength: the amount of total resistance (to movement of the cup and pin) generated during clot formation. This is the total area under the velocity curve during clot growth, representing the amount of clot strength generated during clot growth
Coagulation index (CI)	Overall assessment of coagulability

were serially dehydrated in ethanol (30%, 50%, 70%, 90% and 100%) with a final 30-min dehydration step occurring using 99.9% hexamethyldisilazane (HMDS) ReagentPlus<sup>®</sup> (Sigma-Aldrich, 379212). Samples were left in a fume hood to air-dry overnight before being mounted onto a microscope slide covered in double sided carbon tape. Samples were then carbon coated before being imaged on Zeiss MERLIN<sup>™</sup> field emission scanning microscope located in the Central Analytical Facility (CAF) Electron Microbeam Unit, Stellenbosch University in order to determine fibrin(ogen) ultrastructure. All Micrographs were captured using the high resolution InLens capabilities at 1 kV.

### 20-Plex cytokine analysis

Stored PPP samples from control (n=23) and T2DM (n=25) volunteers were transferred from  $-80$  to  $-20$  °C 24 h prior to multiplex analysis. The samples were analysed in duplicate by means of Invitrogen's Inflammation 20-Plex Human ProcartaPlex<sup>™</sup> Panel (#EPX200-12185-901) and read on the Bio-Plex<sup>®</sup> 200 system (Bio-Rad, 2016). The data is expressed in  $\text{pg mL}^{-1}$ . See Table 2 for the list of pro-and anti-inflammatory cytokines that were analysed.

### V-Plex vascular injury analysis

This ELISA measures sICAM-1, sVCAM-1, SAA and CRP. Stored PPP samples from control (n=36) and T2DM (n=38) volunteers were transferred from  $-80$  to  $-20$  °C 24 h prior to multiplex analysis. The samples were analysed in duplicate by means of Meso Scale Discover Vascular Injury Panel 2 (human) Kits (catalogue

**Table 2 List of pro- and anti-inflammatory biomarkers analyses with 20-plex multiplex kit**

Anti-inflammatory biomarkers	
IFN- $\alpha$	Interferon-alpha
IL-10	Interleukin-10
IL-13	Interleukin-13
IL-4	Interleukin-4
Pro-inflammatory biomarkers	
E-Selectin	E-Selectin
GM-CSF	Granulocyte-macrophage colony-stimulating factor
IFN- $\gamma$	Interferon-gamma
IL-1 $\alpha$	Interleukin-1 alpha
IL-1 $\beta$	Interleukin-1 beta
IL-12p70	Interleukin-12p70
IL-17A	Interleukin-17A
IL-6	Interleukin-6
IL-8	Interleukin-8
IP-10	Interferon gamma-induced protein-10
MCP-1	Monocyte chemoattractant protein-1
MIP-1 $\alpha$	macrophage inflammatory protein-1 alpha
MIP-1 $\beta$	macrophage inflammatory protein-1 beta
P-Selectin	P-Selectin
sICAM-1	Soluble intercellular adhesion molecule-1
TNF- $\alpha$	Tumor necrosis factor-alpha

number: K15198D-1) and read on the MSD Discovery Workbench 4 machine. The data is expressed in  $\text{pg mL}^{-1}$ .

**Table 3 Sample demographics of study population, healthy and diabetic, and medication profile of diabetic volunteers****(a) Sample demographics of 20-Plex cytokine analysis, thromboelastography and lipogram analysis, healthy (n = 23) and diabetic (n = 25) volunteers**

	Healthy individuals (n = 23)	Diabetic individuals (n = 25)	P-values
Gender	Male (n = 14) Female (n = 9)	Male (n = 13) Female (n = 12)	
Age (years)	55.30 ± 3.59	59.75 ± 3.07	
HbA1c (%)	5.43 ± 0.10	9.05 ± 0.58	< 0.0001
Diabetic medication			
Hyperglycaemia medication	–	n = 17 (68.00%)	
Hypertension medication	–	n = 16 (64.00%)	
Hyperlipidaemia medication	–	n = 9 (36.00%)	
Anticoagulant medication	–	n = 12 (48.00%)	

**(b) Sample demographics of V-Plex vascular injury analysis, healthy (n = 36) and diabetic (n = 38) volunteers**

	Healthy individuals (n = 36)	Diabetic individuals (n = 38)	P-values
Gender	Male (n = 16) Female (n = 20)	Male (n = 19) Female (n = 19)	
Age (years)	58.11 ± 10.98	64.58 ± 12.42	
HbA1c (%)	5.25 ± 0.09	8.96 ± 0.46	< 0.0001
Diabetic medication			
Hyperglycaemia medication	–	n = 30 (83.33%)	
Hypertension medication	–	n = 25 (69.44%)	
Hyperlipidaemia medication	–	n = 18 (50.00%)	
Anticoagulant medication	–	n = 19 (52.78%)	

Data expressed as mean ± SEM. No significant correlation was observed between age and HbA1c between the healthy and diabetic samples (Spearman-test) of both 20-Plex (and V-Plex analysis). Medications prescribed and used by diabetic volunteers were recorded, where *n* is the number of diabetic individuals on specific medication. Medication prescribed for hyperglycaemia included; Diamacron, Diagluclide Metformin, Diaphage, Pioglitazone, Galvus and insulin injections (Optisulin, Actraphane, Protaphane, Novomix, Apidra, Lantus, Actrapid, LEVEMIR®, Humulin). Medication prescribed for blood pressure regulation included; Zartan, Ridaq, Coversyl, Amlodipine, Pritor, LASIX® Retard, Ciplavasc, Adco-Zetomax, Indapamide, Carvedilol, Carloc, Amloc Tareg, Adalat, Ciplazar, Spiractin, Irbesartan, Verahexal SR. Medication prescribed for cholesterol regulation included; Simvas, Adco Simvastatintatin, Atorvastatin, Vusor, Aspavor, Bezafibrate.; anticoagulant medication consisted of; Xarelto, Clexane, Aspirin, Heparin, Clopidogrel, Clexane, Ecotrin, novel oral anticoagulants

### Blood lipid analysis

Blood lipids of PPP samples from control (n = 23) and T2DM (n = 25) volunteers were analysed using the CardioChek Plus Professional Cholesterol/Glucose Analyzer (CardioChek Version 1.09, Polymer Technology Systems, United States of America). Total cholesterol (TC), LDL cholesterol, high-density lipoprotein (HDL) cholesterol, triglycerides (TG) and non-high-density lipoprotein (non-HDL) were measured, and TC/HDL ratio was calculated as a marker of cardiovascular disease (CVD) risk.

### Statistical analysis

All statistical analyses were performed using R version 3.5.3 and the built-in glm package. An age and gender adjusted logistic regression model was fit to both the main and expanded vascular injury datasets. Odds ratios (OR) and 95% confidence intervals, calculated using profiling, are reported. Mann–Whitney non-parametric tests were also performed, and P-values reported alongside

logistic OR values. P-values of < 0.05 were accepted as statistically significant.

### Results

Demographic data including age, gender and medication used for typical comorbidities of T2DM patients were recorded by the medical professional on-hand on the day of blood sampling at the clinic. Similar demographic data for healthy controls were recorded prior to blood sampling (refer to Table 3 for sample demographics and data on medication usage) and TEG results of PPP samples are shown in Table 4.

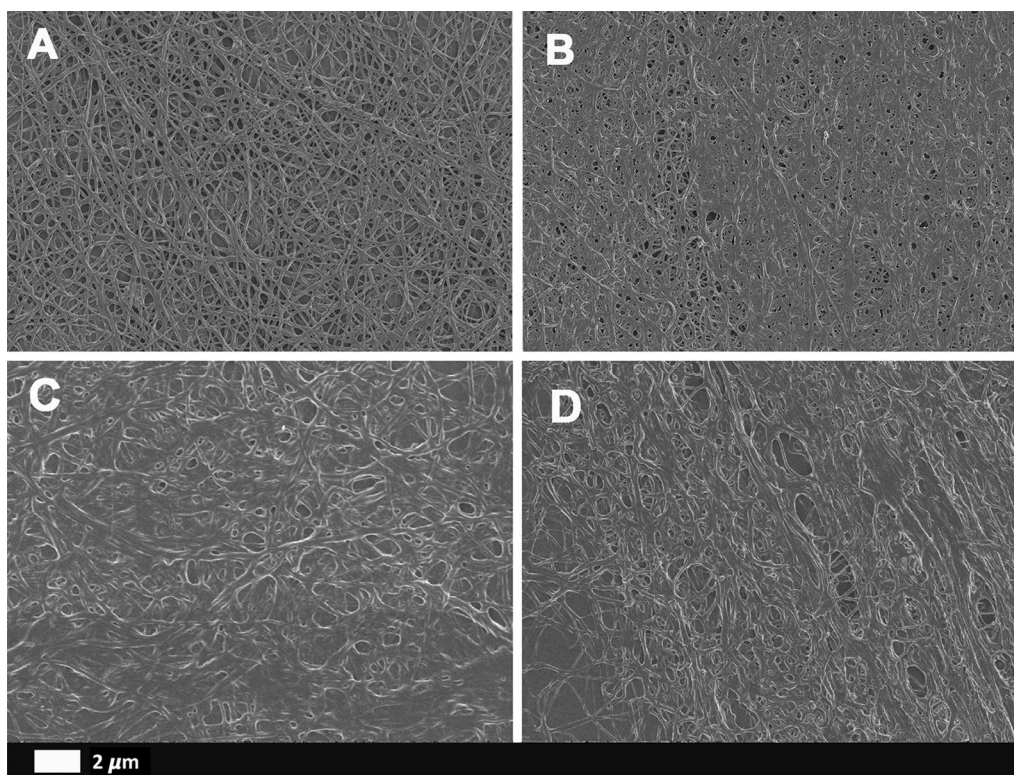
The results of the TEG analysis showed significant differences between the populations for six of the eight assessed parameters (Table 4, final column) and strong associations based on the adjusted logistic model in four of the parameters (4th column).

It is important to note that a subset of our T2DM samples were on anticoagulant medication, such as heparin

**Table 4 Thromboelastography results of eight viscoelastic parameters assessing coagulation efficiency in naïve platelet poor plasma samples of healthy (n = 23) and T2DM (n = 25) volunteers**

TEG clot parameters	Controls (n = 23)	T2DM (n = 25)	Adjusted OR (95% CI)	Mann-Whitney P-value
R-value (min)	9.6 [7.4 to 12.3]	7.5 [5.8 to 9.5]	0.787 (0.616, 0.969)	0.032
K-value (min)	3.75 [2.7 to 5.35]	2.15 [1.8 to 3.1]	0.765 (0.538, 1.03)	0.011
A angle (°)	61 [55.7 to 66.4]	68.1 [61.6 to 70.7]	1.06 (0.966, 1.17)	0.060
MA (mm)	23 [20.2 to 27.5]	30.3 [24.7 to 36.5]	1.12 (1.03, 1.25)	0.011
MRTG (Dyn cm <sup>-2</sup> s <sup>-1</sup> )	3.25 [2.72 to 4.6]	5.45 [3.5 to 7.]	1.59 (1.14, 2.39)	0.014
TMRTG (min)	11.5 [8.5 to 14.7]	8.83 [7.5 to 12.2]	0.867 (0.714, 1.03)	0.100
TTG (Dyn cm <sup>-2</sup> )	149.4 [127 to 191]	218 [165 to 288]	1.01 (1, 1.02)	0.011
CI	-4.55 [-4.9 to -4]	-3.3 [-4.1 to -2.3]	3.44 (1.55, 10.8)	0.006

Summary statistics are given as median and IQR. Significant differences are shown in italics for both models



**Fig. 1** Representative fibrin clot structure of a control (A) versus a T2DM individual (B-D)

and aspirin (see Table 3). Despite this, the diabetic individuals showed a significantly increased rate of clot formation (R-value), the initial rate of thrombus formation, as well as the K-value, which indicates the clot kinetics. Furthermore, in comparison to the healthy control group the T2DM individuals presented with a significantly elevated alpha angle (A angle), maximum amplitude (MA), maximal rate of thrombus generation (MRTG) as well

total thrombus generation (TTG) values. This significant difference indicates that the clots formed faster in the diabetic sample with an overall hypercoagulability that is aligned with previous research [13, 71–73].

To further elucidate what contributes towards the altered TEG results in T2DM individuals (n=10) compared to controls (n=10), SEM was used to visualise fibrin ultrastructure. Figure 1 displays representative

**Table 5 Anti-inflammatory and pro-inflammatory cytokine profiles and results for healthy and T2DM volunteers**

Multiplex cytokine results				
Cytokines (pg mL <sup>-1</sup> )	Healthy (n = 23)	T2DM (n = 25)	Adjusted OR (95% CI)	Mann-Whitney P-value
Anti-inflammatory markers				
IFN-α	1.35 [0.74–1.63]	2.28 [1.94–2.49]	1.03 (0.75, 1.45)	0.003
IL-10	2.74 [1.89–5.29]	9.6 [4.62–16.27]	<i>1.17 (1.05, 1.36)</i>	0.0002
IL-13	2.25 [0.665–7.03]	5.75 [2.56–10.01]	1.03 (0.93, 1.15)	0.045
IL-4	7.09 [2.3–20.6]	29.63 [15.3–78.5]	1.01 (1, 1.03)	0.004
Pro-inflammatory markers				
E-Selectin	25,885 [19,418–30,622]	24,782 [18,633–35,779]	1 (1, 1)	0.902
GM-CSF	0.001 [0.001–18]	29.18 [15.61–60]	1.02 (1, 1.04)	0.001
IFN-γ	4.12 [0.001–12.6]	12.03 [7.1–19.3]	1.02 (0.98, 1.08)	0.007
IL-1α	3.49 [2.45–5.2]	11.33 [3.6–24.9]	<i>1.12 (1.04, 1.23)</i>	0.003
IL-1β	16.47 [11.4–30.3]	48.98 [33.8–76.6]	<i>1.02 (1, 1.05)</i>	0.00005
IL-12p70	12.03 [6.7–15.4]	22.92 [16.4–30.8]	<i>1.16 (1.06, 1.3)</i>	0.00015
IL-17A	0.001 [0.001–0.97]	4.11 [1.05–8.47]	1.09 (0.99, 1.24)	0.0005
IL-6	8.43 [0.44–21.18]	239.41 [31–1018]	<i>1 (1, 1.01)</i>	0.00005
IL-8	1.33 [0.001–15.6]	36.32 [3.83–69.5]	1.02 (1, 1.04)	0.003
IP-10	18.12 [15.2–27.1]	30.8 [23.0–149.6]	1.01 (1, 1.03)	0.005
MCP-1	39.98 [24.8–54.4]	65.3 [43.4–134.2]	<i>1.04 (1.02, 1.08)</i>	0.0002
MIP-1α	20.94 [4.31–70.7]	63.82 [14.7–108]	1.01 (1, 1.02)	0.083
MIP-1β	39.9 [20.7–424.6]	317.1 [65.2–565.4]	1 (1, 1)	0.016
P-Selectin	9080 [6318–12,792]	11,967 [9626–16,135]	1 (1, 1)	0.03
sICAM-1	39,140 [27,732–59,821]	47,253 [29,219–58,020]	1 (1, 1)	0.79
TNF-α	86.3 [68.9–121.5]	161.7 [98.6–197.5]	<i>1.01 (1, 1.03)</i>	0.012

Summary statistics are given as median and [IQR]. Significant differences are shown in italics for both models

**Table 6 V-Plex vascular injury profiles and results for healthy and T2DM volunteers**

V-Plex vascular injury results				
Biomarker (pg mL <sup>-1</sup> )	Healthy (n = 36)	T2DM (n = 39)	Adjusted OR (95% CI)	Mann-Whitney P-value
CRP	1113 [550–2373]	7166 [1749–38,086]	<i>1.23 (1.09, 1.5)</i>	< 0.0001
SAA	1532 [807–2876]	8433 [2527–91,382]	<i>1.02 (1.01, 1.05)</i>	< 0.0001
sICAM-1	312 [266–357]	367 [300–438]	<i>447 (4.69, 121,580)</i>	0.009
sVCAM-1	387 [327–451]	472 [383–552]	71 (1.55, 9787)	0.004

Summary statistics are given as median and [IQR]. Significant differences are shown in italics for both models

images of fibrin clots formed from both control and diabetics individuals imaged at 5000- and 10,000-times machine magnification. Through qualitative analysis, it is evident to see that aberrant fibrin clots form in diabetic samples as these clots have fibrin fibres with a greater diameter, multiple fibres meshing together resulting in significantly fewer open spaces between fibres as well as the formation of “dense matted deposits” within the

fibrin clots. All of which result in a stronger more stable clots which was concurrently observed in the TEG analysis.

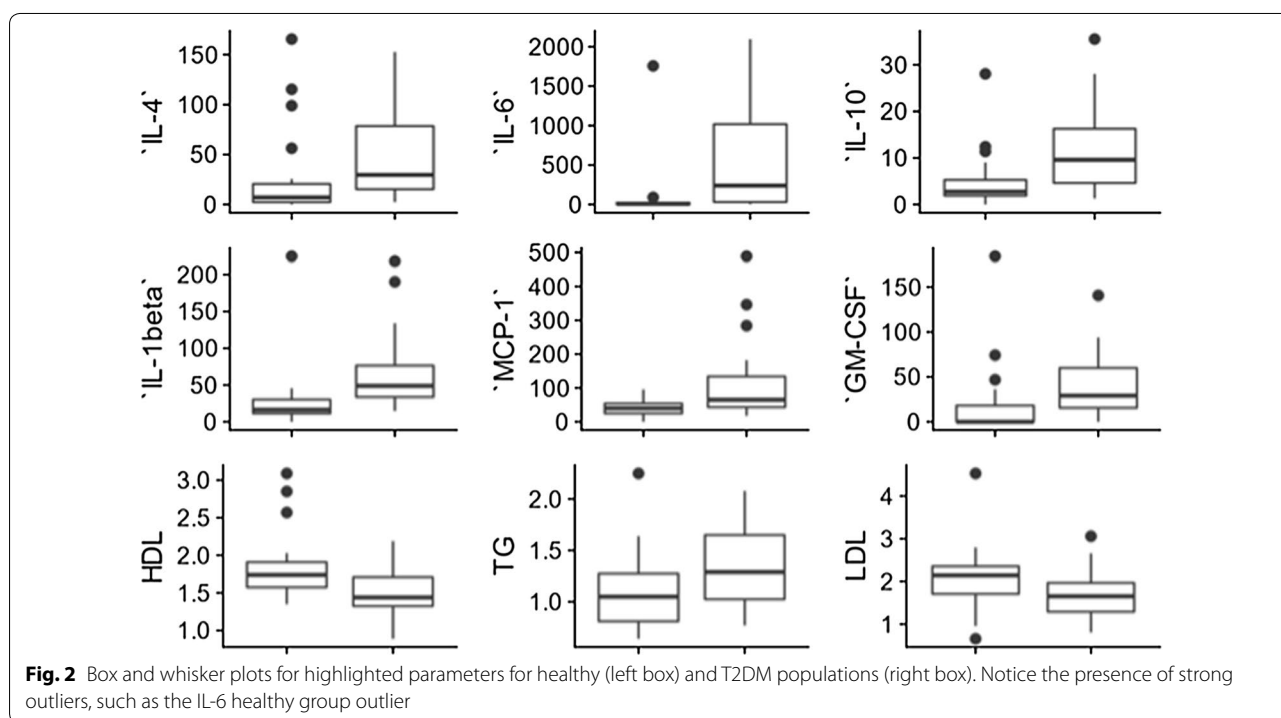
Tables 5 and 6 contain multiplex cytokine and V-Plex vascular injury profile analyses respectively. Note that the vascular injury profile population was a super-set of the cytokine profile population. One can observe many statistically significant differences across the anti-inflammatory, pro-inflammatory and vascular injury marker



**Table 7 Platelet poor plasma blood lipid profile of healthy and T2DM volunteers**

Lipid profile results				
Lipogram parameters (mmol L <sup>-1</sup> )	Healthy (n = 23)	T2DM (n = 25)	Adjusted OR (95% CI)	Mann-Whitney P-value
TC	4.19 [3.66–4.79]	3.83 [3.11–4.3]	0.524 (0.223, 1.08)	0.09
HDL	1.74 [1.57–1.91]	1.44 [1.32–1.71]	<i>0.114 (0.012, 0.64)</i>	<i>0.0047</i>
TG	1.05 [0.81–1.27]	1.29 [1.025–1.65]	<i>8.34 (1.55, 64.3)</i>	<i>0.0139</i>
LDL	2.14 [1.71–2.36]	1.65 [1.29–1.97]	0.419 (0.128, 1.11)	0.07
Non-HDL	2.51 [2.12–2.88]	2.34 [1.88–2.56]	0.55 (0.159, 1.7)	0.35

Summary statistics are given as median and IQR. Significant differences are shown in italics for both models

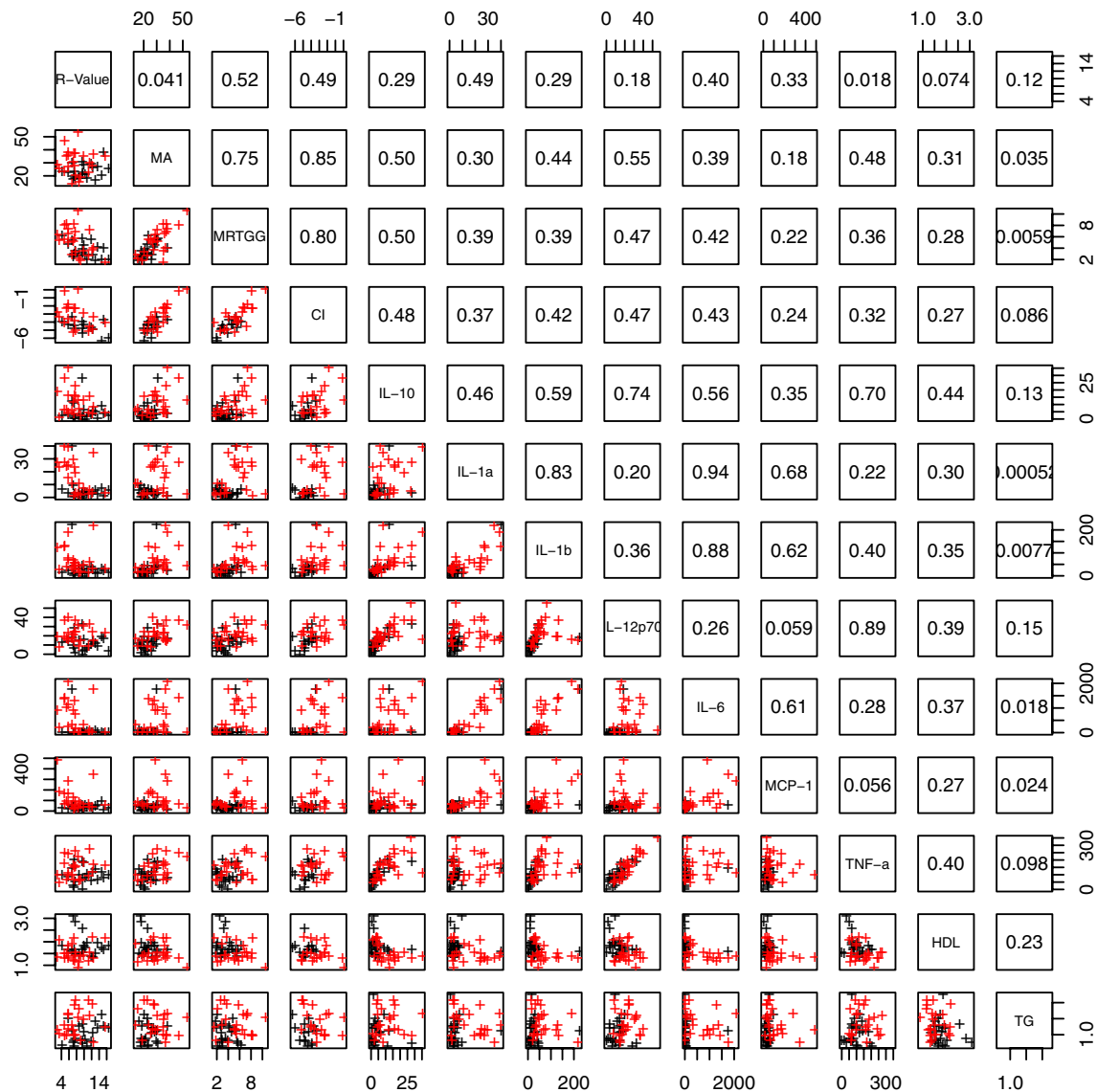


groups. As with the TEG parameters we see the non-parametric test identifies a (strictly) larger set of parameters as significant, with differences between the models explain by outliers in the control group.

Platelet poor plasma lipid levels are shown in Table 7. Healthy controls exhibited significantly higher HDL cholesterol levels compared to T2DM individuals (OR=0.114). An important consideration is that a subset of our T2DM samples were on lipid-lowering medication (statins) (see Table 3). Conversely, TG concentrations were significantly higher in the diabetic group (OR=8.34). A trend towards statistical significance was apparent for both TC and LDL, favouring higher levels in healthy individuals relative to diabetes patients.

The differences between the logistic and non-parametric test significance results (also present in the unadjusted fit) are due to the presence of significant outliers, often in the control group, leading to weaker logistic trends. These outliers can be seen in the box and whisker plots in Fig. 2 (IL-6 is a particularly illustrative example). Both models are presented here in order to illustrate both the presence of population differences and regressive trends and finally to highlight consistent parameters across multiple techniques. Future studies on a larger population sizes should attempt to model the outlier behaviour, particularly with regards to outliers in the control population, using a multi-variate model.

Figures 3 and 4 present lattice plots that illustrated the distribution of, and correlations between, the significant



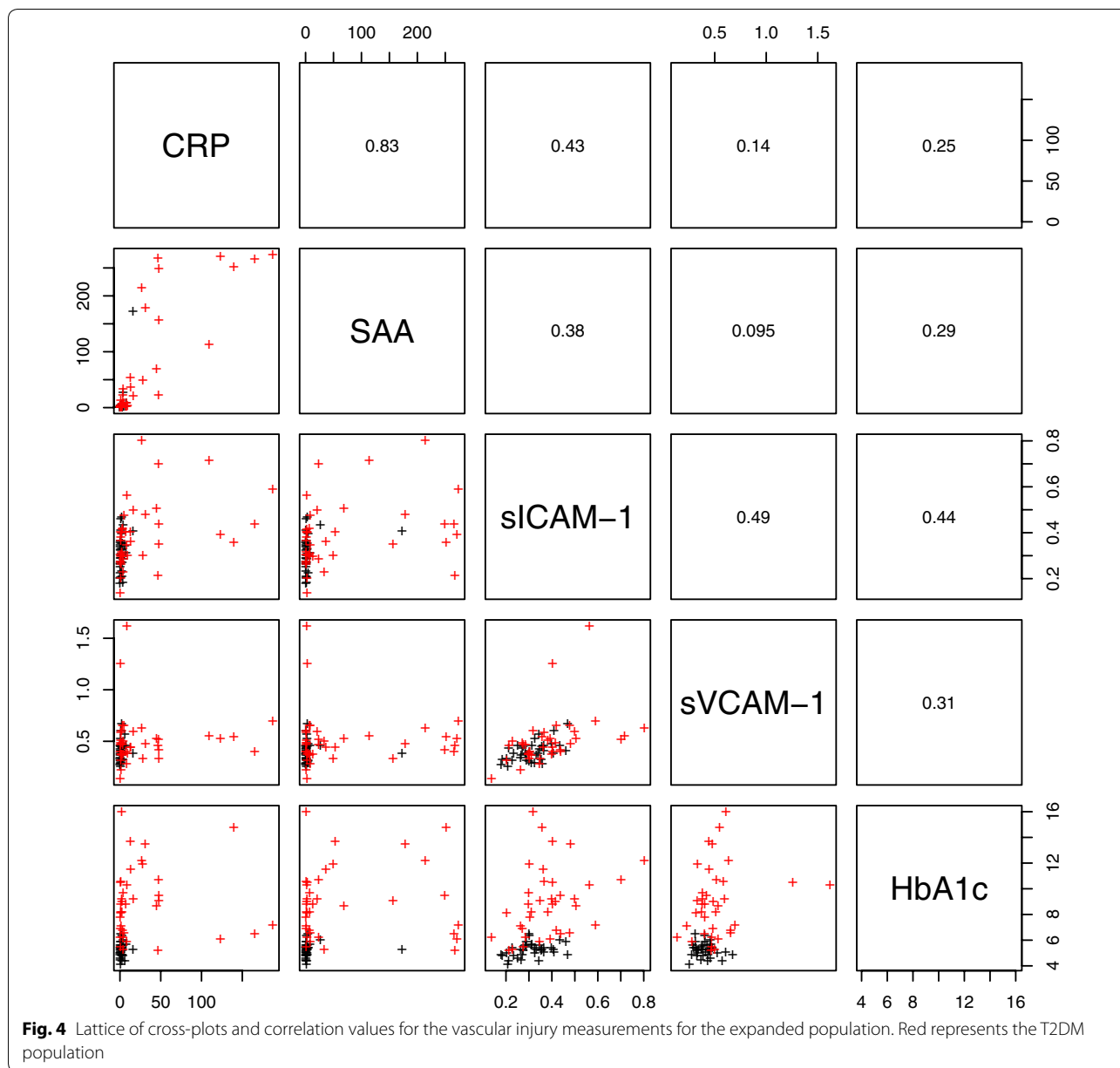
**Fig. 3** Lattice of cross-plots and correlation values across statistically significant TEG, cytokine and lipid measurements (with groups separated by blue lines). Red represents the T2DM population

parameters. One can observe some strong correlations between parameters both within and between parameter groups. One notable example, as shown in Fig. 5, is the strong correlation between CRP and SAA and sICAM. This correlation is of great importance, as it shows a fundamental relationship between the presence of systemic inflammation, as measured with CRP, and vascular injury, as measured with sICAM. It is known that endothelium overlying atherosclerotic lesions expresses both ICAM-1 (and also VCAM-1 and P-selectin, which are both significantly upregulated in our T2DM sample) [74]. It is also

known that ICAM-1, is expressed on endothelium in regions not prone to plaque development.

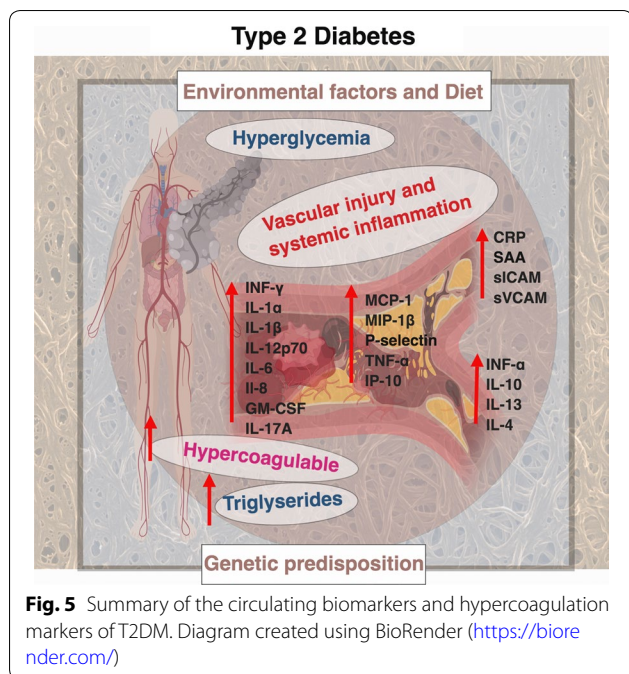
### Discussion

Analysis of viscoelastic parameters measured by TEG in PPP of control and T2DM individuals showed significant differences between the two groups. Importantly, a decrease clot reaction time (R-value) and decreased clot kinetics (K-value) was observed in the T2DM samples indicating an accelerated initial rate of thrombus generation as well as elevated clot amplification. Furthermore, a statistical trend was seen in the A-angle value indicating



that the rate of fibrin build-up and crosslinking is elevated in diabetes, which can be attributed to an elevated thrombin burst in compared to the healthy aged controls. Similarly, a significantly increased maximum clot amplitude (MA) in conjunction with elevated maximal rate of thrombus generation (MRTG) observed in T2DM indicates the formation of a more rigid and stable clot in a significantly accelerated manner. Finally, the significant change in the total thrombus generation (TTG) further indicates the overall elevated strength and stability of the

diabetic clots in comparison to that of the healthy controls. The noted aberrant parameters indicate a hypercoagulable state in T2DM which has been previously noted in literature [71–73, 75]. These structural changes in the diabetic fibrin clots were also confirmed using SEM. In future, a comprehensive analysis on fibre structure and thickness measurement could add valuable information, particularly with regards to how fibre structure and thickness may relate to a compromised lytic potential.



The T2DM clots were rich in dense matted deposits, previously shown to correspond to amyloidogenic regions in the fibrin clots [75]. Furthermore, multiple fine fibrin fibres meshes were noticed in the diabetic clots compared to the controls. These findings align with previous evidence. The TEG and SEM results taken together with the circulating biomarker results (Fig. 2) point to a dysregulated circulating molecule presence that might have a direct effect on the development of abnormal clot structure and formation, resulting in a dysregulated coagulation system in T2DM.

Although evidence involving the aberrant role of inflammatory mediators in both communicable and non-communicable disease is indisputable, limited evidence exists regarding the role of inflammatory cytokines in coagulation and fibrinolytic processes in T2DM. Researchers have predominantly investigated relationships through various cell culture models of LPS-induced disease, relating to bacterial and viral infection on hemodynamic processes (see Additional file 1: Tables). Here, we confirm the physiological effect of dysregulated circulating cytokines, and confirm that their presence is accompanied by a hypercoagulable phenotype. These dysregulated circulating cytokines therefore are a direct link between hypercoagulation and inflammation and it manifests in T2DM as a bidirectional relationship between (hyper)coagulation and inflammation. We provide evidence that the majority of inflammatory molecules were elevated in T2DM patients relative to

healthy controls a phenomenon that is consistent with established literature (see Additional file 1: Tables S1) particularly with regards to their role in T2DM pathogenesis. Many of the biomarkers studied here, are also known to act as ligands to e.g. platelet, as well as red blood cell (RBC) membrane receptors; examples include e.g. IL-1 $\beta$ , IL-6 and IL-8, where their binding to platelet receptors are known to activate various inflammatory pathways, resulting in platelet hyperactivity, aggregation and spreading, as well as contributing to the circulating inflammatory milieu [76, 77]. Furthermore, the presence of p-selectin, which is a prominent platelet product, is directly indicative of dysregulated platelet aggregation and activation, which can directly drive and actively participate in the development of hypercoagulation [78].

A somewhat salient finding of the present study involves the increased levels of anti-inflammatory cytokines (IFN- $\alpha$ , IL-10, IL-4, IL-13) observed in T2DM patients relative to controls. These molecules are known anti-inflammatory cytokines, but their increased presence in our T2DM sample might be indicative of the very complex interplay between these molecules and their pro-inflammatory counterparts; where the elevated expression of anti-inflammatory cytokines might point to their part as compensatory and counter regulatory molecules, that might aim to limit damage by pro-inflammatory environment. Notably, evidence of elevated anti-inflammatory molecules in disease is by no means an anomaly, and has been observed and interpreted in previous research, however not in the context of T2DM. Consistent with this, a study on IL-10 and risk of cardiovascular events observed circulating IL-10 concentrations to be positively associated with pro-inflammatory mediators including CRP and IL-6 [79]. Additionally, elevated pro-inflammatory cytokines, such as IL-6 and TNF- $\alpha$ , have been observed to accompany anti-inflammatory IL-10 production in certain inflammatory conditions to compensate for inflammation [80]. The physiological role of IL-10 is to limit the inflammatory response by limiting pro-inflammatory cytokine production and suppressing pro-inflammatory T-helper 1 cells natural killer cells and macrophages activity [81]. Thus, it stands to reason that the anti-inflammatory response serves to limit pro-inflammatory activity mediated by elevated pro-inflammatory cytokines, thus eliciting a counter-regulatory role to inflammatory stimuli. We also would like to point out that both our kits, analyzed s-ICAM-1. The Procarta panel is a Luminex system, which uses a fluorescent bead system and a 2-LOG ratio, while the MSD panel uses a 4-LOG ratio. The detection ranges are also as follows: MSD (ICAM-1: 1.94–32,700 pg mL<sup>-1</sup>) and Procarta Luminex (ICAM-1: 151.85–622,000 pg mL<sup>-1</sup>). Our

Luminex panel analysis showed a *p* value of 0.79, while our MSD panel analysis showed a *P*-value of 0.009. Taking this into account, we also suggest that the choice of panels and their sensitivity should be considered if they are used in a clinical setting. Figure 5 shows a summary diagram of the main findings of this paper.

## Conclusion

In conclusion, T2DM is an extremely complex and multifaceted inflammatory disease. These results point to the fact that a personalized approach urgently needs to be followed when planning treatment and tracking the patient health status after embarking on a treatment regime, and that looking to novel biomarkers might be crucial. Our patient sample were all on various medication interventions, but still their biomarker profiles are significantly different from that of healthy individuals. Diabetes management following a uniform treatment algorithm is often associated with progressive treatment failure and development of diabetic complications [82]. Importantly, a better risk stratification and more precise options for treatment need to be developed and included in clinical practice guidelines [83]. The growing T2DM patient numbers discussed earlier in this paper, suggest that the only way forward is to follow innovative approaches to curb the pandemic we are facing. Perhaps the only option will be to follow an individualized precision medicine approach by using a panel of biomarkers and combining it with e.g. thromboelastography as part of a regular clinical evaluation. By tracking the inflammatory status of T2DM using various biomarkers, before and after embarking on a treatment regime, might allow for a more focussed treatment regime.

## Additional file

**Additional file 1: Table S1.** Summary of inflammatory biomarkers indicating their role in blood clotting (aberrant hypercoagulation and hypofibrinolysis), both in disease and experimental inquisition (\*not specific to T2DM). **Table S2.** Inflammatory markers and how their dysregulation contributes towards the development, and/or pathogenesis of T2DM.

## Abbreviations

A angle: alpha angle; ADA: American Diabetes Association; ADP: adenosine diphosphate; AP-1: activator protein 1; CaCl<sub>2</sub>: calcium chloride; CAF: Central Analytical Facility; CCL3: chemokine (C–C motif) ligand 3; CCL4: chemokine (C–C motif) ligand 4; CLS: crown-like structure; CRP: C-reactive protein; CVD: cardiovascular disease; EDTA: ethylenediaminetetraacetic acid; FFA: free fatty acid; G6P: glucose-6-phosphatase; GLUT: glucose transporter; GM-CSF: granulocyte–macrophage colony-stimulating factor; GPCR: G-protein coupled receptor; GSK-3β: glycogen synthase kinase-3β; HbA<sub>1c</sub>: glycosylated haemoglobin; HDL: high-density lipoprotein; HMDS: hexamethylsilazane; HREC: Health Research Ethics Committee; hs-CRP: high sensitivity CRP; HSL: hormone sensitive lipase; HIV: human immunodeficiency virus; IDF: International Diabetes Federation; IFN: interferon; IL: interleukin; iNOS: inducible NO synthase;

IP-10: interferon gamma-induced protein 10; IQR: interquartile ranges; IR: insulin resistance; IRS: insulin receptor substrate; JAK-STAT: Janus kinase-Signal Transducer and Activator of Transcription; JNK: c-Jun N-terminal kinase; K: clot kinetics; LDL: low-density lipoprotein; LpL: lipoprotein lipase; LPS: lipopolysaccharide; MA: maximal amplitude; MAPK: mitogen-activated protein kinases; MCP-1: monocyte chemoattractant protein-1; MIP: Macrophage Inflammatory Protein; MRTG: maximum rate of thrombus generation; NF-κB: nuclear factor kappa-light-chain-enhancer of activated B cells; NK: natural killer; NO: nitric oxide; non-HDL: non-high-density lipoprotein; PAI-1: plasminogen activator inhibitor-1; PBS: phosphate-buffered saline; PCA: principal component analysis; PEPCK: phosphoenolpyruvate carboxykinase; PI3-K: phosphatidylinositolide-3 kinase; PKA: protein kinase A; PPP: platelet-poor plasma; PRP: platelet-rich plasma; RBC: red blood cell; ROS: reactive oxygen species; RTK: receptor tyrosine kinase; R-value: clot reaction time; SEM: scanning electron microscopy; SEMSDA: Society for Endocrinology, Metabolism and Diabetes of South Africa; SHIP1: Src homology 2 (SH2) domain containing inositol polyphosphate 5-phosphatase 1; sICAM-1: soluble intercellular adhesion molecule-1; SOCS: suppressor of cytokine signaling; sP-selectin: soluble P-selectin; SST: serum separating tubes; T2DM: type 2 diabetes mellitus; TC: total cholesterol; TEG: thromboelastography; TF: tissue factor; TG: triglyceride; TLR: toll-like receptor; TMRTG: time to maximum rate of thrombus generation; TNF-α: tumor necrosis factor-alpha; tPA: tissue-type plasminogen activator; TTG: total thrombus generation; TXA<sub>2</sub>: thromboxane A<sub>2</sub>; VLDL: very low-density lipoprotein; vWF: von Willebrand Factor; WB: whole blood.

## Acknowledgements

We thank Prof. Martin Kidd, Centre for Statistical Consultation, Stellenbosch University for the PCA analysis.

## Authors' contributions

GJAT: TEG, multiplex cytokine analysis; sample handling; SR: TEG, multiplex cytokine analysis and statistics; TAN: Co-study leader, phlebotomy: controls, and co-editing of paper; TR: statistical analysis; EP: study leader and corresponding author, editing and writing of paper. All authors read and approved the final manuscript.

## Funding

We thank the National Research Foundation (NRF) of South Africa (91548: Competitive Program) and the Medical Research Council of South Africa (MRC) (Self-Initiated Research Program) for supporting this collaboration. The funders had no role in study design, data collection and analysis, decision to publish, or preparation of the manuscript.

## Availability of data and materials

All raw data is available <https://1drv.ms/f/s!AgoCOmY3bkKHibUfoOXKPHxT28Ly1w>.

## Ethics approval and consent to participate

Ethical clearance was obtained from the Health Research Ethics Committee (HREC) of Stellenbosch University. A written form of informed consent was obtained from all donors. Blood was collected, and methods were carried out in accordance with the relevant guidelines of the ethics committees. We adhered strictly to the Declaration of Helsinki.

## Consent for publication

All authors have read the paper and agree that it can be published.

## Competing interests

The authors declare that they have no competing interests.

## Author details

<sup>1</sup> Department of Physiological Sciences, Stellenbosch University, Private Bag X1, Matieland 7602, South Africa. <sup>2</sup> Department of Biochemistry, Institute of Integrative Biology, Faculty of Health and Life Sciences, University of Liverpool, Crown St, Liverpool L69 7ZB, UK.

Received: 27 March 2019 Accepted: 16 May 2019

Published online: 04 June 2019

## References

- NCD Risk Factor Collaboration (NCD-RISC). Worldwide trends in diabetes since 1980: a pooled analysis of 751 population-based studies with 4.4 million participants. *Lancet*. 2016;387(10027):1513–30.
- Donadello K, Piagnerelli M, Reggiori G, Gottin L, Scolletta S, Occhipinti G, Zouaoui Boudjeltia K, Vincent JL. Reduced red blood cell deformability over time is associated with a poor outcome in septic patients. *Microvasc Res*. 2015;101:8–14.
- Karim F, Akter QS, Jahan S, Khanom A, Haque S, Yeasmin T, Siddika T, Sinha S. Coagulation Impairment in type 2 diabetes mellitus. *J. Bangladesh Soc Physiol*. 2015;10(1):26–9.
- Nguyen-Chi M, Laplace-Builhe B, Travnickova J, Luz-Crawford P, Tejedor G, Phan QT, Duroux-Richard I, Levraud JP, Kissa K, Lutfalla G, et al. Identification of polarized macrophage subsets in zebrafish. *eLife*. 2015;4:e07288.
- Colwell JA, Nesto RW. The platelet in diabetes: focus on prevention of ischemic events. *Diabetes Care*. 2003;26(7):2181–8.
- Pretorius E, Kell DB. Diagnostic morphology: biophysical indicators for iron-driven inflammatory diseases. *Integr Biol*. 2014;6(5):486–510.
- Kell DB, Pretorius E. The simultaneous occurrence of both hypercoagulability and hypofibrinolysis in blood and serum during systemic inflammation, and the roles of iron and fibrin(ogen). *Integr Biol*. 2015;7:24–52.
- Goldberg RB. Cytokine and cytokine-like inflammation markers, endothelial dysfunction, and imbalanced coagulation in development of diabetes and its complications. *J Clin Endocrinol Metab*. 2009;94(9):3171–82.
- Stolar MW, Chilton RJ. Type 2 diabetes, cardiovascular risk, and the link to insulin resistance. *Clin Ther*. 2003;25(Suppl B):B4–31.
- Wellen KE, Hotamisligil GS. Inflammation, stress, and diabetes. *J Clin Investig*. 2005;115(5):1111–9.
- Glatz JF, Dyck JR, Des Rosiers C. Cardiac adaptations to obesity, diabetes and insulin resistance. New York: Elsevier; 2018.
- Bril F, Cusi K. Basic concepts in insulin resistance and diabetes treatment. *Dermatology and diabetes*. Berlin: Springer; 2018. p. 19–35.
- Pretorius E, Bester J, Vermeulen N, Alummoottil S, Soma P, Buys AV, Kell DB. Poorly controlled type 2 diabetes is accompanied by significant morphological and ultrastructural changes in both erythrocytes and in thrombin-generated fibrin: implications for diagnostics. *Cardiovasc Diabetol*. 2015;14:30.
- Domingueti CP, Dusse LMSA, das Graças Carvalho M, de Sousa LP, Gomes KB, Fernandes AP. Diabetes mellitus: the linkage between oxidative stress, inflammation, hypercoagulability and vascular complications. *J Diab Compl*. 2016;30(4):738–45.
- Mutie PM, Giordano GN, Franks PW. Lifestyle precision medicine: the next generation in type 2 diabetes prevention? *BMC Med*. 2017;15(1):171.
- Esser N, Legrand-Poels S, Piette J, Scheen AJ, Paquot N. Inflammation as a link between obesity, metabolic syndrome and type 2 diabetes. *Diabetes Res Clin Pract*. 2014;105(2):141–50.
- van der Leeuw J, Beulens JW, van Dieren S, Schalkwijk CG, Glatz JF, Hofker MH, Verschuren WM, Boer JM, van der Graaf Y, Visseren FL, et al. Novel biomarkers to improve the prediction of cardiovascular event risk in type 2 diabetes mellitus. *J Am Heart Assoc*. 2016;5:6.
- Hotamisligil GS, Arner P, Caro JF, Atkinson RL, Spiegelman BM. Increased adipose tissue expression of tumor necrosis factor- $\alpha$  in human obesity and insulin resistance. *J Clin Investig*. 1995;95(5):2409–15.
- Keane KN, Calton EK, Carllessi R, Hart PH, Newsholme P. The bioenergetics of inflammation: insights into obesity and type 2 diabetes. *Eur J Clin Nutr*. 2017;71(7):904–12.
- Franks PW, Poveda A. Lifestyle and precision diabetes medicine: will genomics help optimise the prediction, prevention and treatment of type 2 diabetes through lifestyle therapy? *Diabetologia*. 2017;60(5):784–92.
- McCarthy ML. Painting a new picture of personalised medicine for diabetes. *Diabetologia*. 2017;60(5):793–9.
- De Buck M, Gouwy M, Wang JM, Van Snick J, Proost P, Struyf S, Van Damme J. The cytokine-serum amyloid A-chemokine network. *Cytokine Growth Factor Rev*. 2016;30:55–69.
- Bray C, Bell LN, Liang H, Haykal R, Kaikow S, Mazza JJ, Yale SH. Erythrocyte sedimentation rate and C-reactive protein measurements and their relevance in clinical medicine. *Off Publ State Med Soc Wisconsin*. 2016;115(6):317–21.
- Pepys MB, Hirschfield GM. C-reactive protein: a critical update. *J Clin Investig*. 2003;111(12):1805–12.
- Pradhan S, Ghimire A, Bhattarai B, Khanal B, Pokharel K, Lamsal M, Koirala S. The role of C-reactive protein as a diagnostic predictor of sepsis in a multidisciplinary Intensive Care Unit of a tertiary care center in Nepal. *Indian J Crit Care Med*. 2016;20(7):417–20.
- Katz FE, Parkar M, Stanley K, Murray LJ, Clark EA, Greaves MF. Chromosome mapping of cell membrane antigens expressed on activated B cells. *Eur J Immunol*. 1985;15(1):103–6.
- Hubbard AK, Rothlein R. Intercellular adhesion molecule-1 (ICAM-1) expression and cell signaling cascades. *Free Radical Biol Med*. 2000;28(9):1379–86.
- Fingar VH, Taber SW, Buschemeyer WC, ten Tije A, Cerrito PB, Tseng M, Guo H, Johnston MN, Wieman TJ. Constitutive and stimulated expression of ICAM-1 protein on pulmonary endothelial cells in vivo. *Microvasc Res*. 1997;54(2):135–44.
- Javadi K, Rahman A, Anwar KN, Frey RS, Minshall RD, Malik AB. Tumor necrosis factor- $\alpha$  induces early-onset endothelial adhesivity by protein kinase C- $\zeta$ -dependent activation of intercellular adhesion molecule-1. *Circ Res*. 2003;92(10):1089–97.
- Myers CL, Wertheimer SJ, Schembri-King J, Parks T, Wallace RW. Induction of ICAM-1 by TNF- $\alpha$ , IL-1  $\beta$ , and LPS in human endothelial cells after downregulation of PKC. *Am J Physiol*. 1992;263(4 Pt 1):C767–72.
- Chiu JJ, Wung BS, Shyy JY, Hsieh HJ, Wang DL. Reactive oxygen species are involved in shear stress-induced intercellular adhesion molecule-1 expression in endothelial cells. *Arterioscler Thromb Vasc Biol*. 1997;17(12):3570–7.
- Karimi Z, Kahe F, Jamil A, Marszalek J, Ghanbari A, Afarideh M, Khajeh E, Noshad S, Esteghamati A, Chi G. Intercellular adhesion molecule-1 in diabetic patients with and without microalbuminuria. *Diabetes Metab Syndr*. 2018;12(3):365–8.
- Price DT, Loscalzo J. Cellular adhesion molecules and atherogenesis. *Am J Med*. 1999;107(1):85–97.
- Osborn L, Hession C, Tizard R, Vassallo C, Luhowskyj S, Chi-Rosso G, Lobb R. Direct expression cloning of vascular cell adhesion molecule 1, a cytokine-induced endothelial protein that binds to lymphocytes. *Cell*. 1989;59(6):1203–11.
- Rice GE, Bevilacqua MP. An inducible endothelial cell surface glycoprotein mediates melanoma adhesion. *Science (New York, NY)*. 1989;246(4935):1303–6.
- Cook-Mills JM, Marchese ME, Abdala-Valencia H. Vascular cell adhesion molecule-1 expression and signaling during disease: regulation by reactive oxygen species and antioxidants. *Antioxid Redox Signal*. 2011;15(6):1607–38.
- Wittchen ES. Endothelial signaling in paracellular and transcellular leukocyte transmigration. *Front Biosci (Landmark edition)*. 2009;14:2522–45.
- Liu JJ, Yeoh LY, Sum CF, Tavintharan S, Ng XW, Liu S, Lee SB, Tang WE, Lim SC. Vascular cell adhesion molecule-1, but not intercellular adhesion molecule-1, is associated with diabetic kidney disease in Asians with type 2 diabetes. *J Diabetes Complications*. 2015;29(5):707–12.
- Braatvedt GD, Gamble G, Ockelford P, Bagg W, Ferri C, Desideri G. The influences of obesity and glycemic control on endothelial activation in patients with type 2 diabetes. *J Clin Endocrinol Metab*. 2001;86(11):5491–7.
- De Vriese AS, Verbeuren TJ, Van de Voorde J, Lameire NH, Vanhoutte PM. Endothelial dysfunction in diabetes. *Br J Pharmacol*. 2000;130(5):963–74.
- Devaraj S, Jialal I. Low-density lipoprotein postsecretory modification, monocyte function, and circulating adhesion molecules in type 2 diabetic patients with and without macrovascular complications: the effect of alpha-tocopherol supplementation. *Circulation*. 2000;102(2):191–6.
- Wang X, Bao W, Liu J, Ouyang YY, Wang D, Rong S, Xiao X, Shan ZL, Zhang Y, Yao P, et al. Inflammatory markers and risk of type 2 diabetes: a systematic review and meta-analysis. *Diabetes Care*. 2013;36(1):166–75.
- Eklund KK, Niemi K, Kovanen PT. Immune functions of serum amyloid A. *Crit Rev Immunol*. 2012;32(4):335–48.
- Thompson JC, Jayne C, Thompson J, Wilson PG, Yoder MH, Webb N, Tannock LR. A brief elevation of serum amyloid A is sufficient to increase atherosclerosis. *J Lipid Res*. 2015;56(2):286–93.
- Li J, Tan M, Xiang Q, Zhou Z, Yan H. Thrombin-activated platelet-derived exosomes regulate endothelial cell expression of ICAM-1 via micro-RNA-223 during the thrombosis-inflammation response. *Thromb Res*. 2017;154:96–105.

46. Herter JM, Rossaint J, Zarbock A. Platelets in inflammation and immunity. *J Thromb Haemost*. 2014;12(11):1764–75.
47. Olumuyiwa-Akeredolu OO, Page MJ, Soma P, Pretorius E. Platelets: emerging facilitators of cellular crosstalk in rheumatoid arthritis. *Nat Rev Rheumatol*. 2019;15:237–48.
48. Bombelli T, Schwartz BR, Harlan JM. Adhesion of activated platelets to endothelial cells: evidence for a GPIIb/IIIa-dependent bridging mechanism and novel roles for endothelial intercellular adhesion molecule 1 (ICAM-1), alphavbeta3 integrin, and GPIIb/IIIa. *J Exp Med*. 1998;187(3):329–39.
49. Meza D, Shanmugavelayudam SK, Mendoza A, Sanchez C, Rubenstein DA, Yin W. Platelets modulate endothelial cell response to dynamic shear stress through PECAM-1. *Thromb Res*. 2017;150:44–50.
50. Shi J, Zhu N, Wang J, Wang Y, Geng Z, Gao S, Li Z. Expression of platelet collagen receptor glycoprotein VI in coronary heart disease: interaction between platelets and endothelial cells. *Clinical laboratory*. 2016;62(7):1279–86.
51. Ye RD, Sun L. Emerging functions of serum amyloid A in inflammation. *J Leukoc Biol*. 2015;98(6):923–9.
52. de Beer MC, Yuan T, Kindy MS, Asztalos BF, Roheim PS, de Beer FC. Characterization of constitutive human serum amyloid A protein (SAA4) as an apolipoprotein. *J Lipid Res*. 1995;36(3):526–34.
53. Cabana VG, Reardon CA, Wei B, Lukens JR, Getz GS. SAA-only HDL formed during the acute phase response in apoA-I+/+ and apoA-I-/- mice. *J Lipid Res*. 1999;40(6):1090–103.
54. Kisilevsky R, Manley PN. Acute-phase serum amyloid A: perspectives on its physiological and pathological roles. *Amyloid*. 2012;19(1):5–14.
55. Hua S, Song C, Geczy CL, Freedman SB, Witting PK. A role for acute-phase serum amyloid A and high-density lipoprotein in oxidative stress, endothelial dysfunction and atherosclerosis. *Redox Rep*. 2009;14(5):187–96.
56. Jayaraman S, Haupt C, Gursky O. Thermal transitions in serum amyloid A in solution and on the lipid: implications for structure and stability of acute-phase HDL. *J Lipid Res*. 2015;56(8):1531–42.
57. Zewinger S, Drechsler C, Kleber ME, Dressel A, Riffel J, Triem S, Lehmann M, Kopecky C, Saemann MD, Lepper PM, et al. Serum amyloid A: high-density lipoproteins interaction and cardiovascular risk. *Eur Heart J*. 2015;36(43):3007–16.
58. Malle E, De Beer FC. Human serum amyloid A (SAA) protein: a prominent acute-phase reactant for clinical practice. *Eur J Clin Invest*. 1996;26(6):427–35.
59. Bozinovski S, Hutchinson A, Thompson M, Macgregor L, Black J, Giannakis E, Karlsson AS, Silvestrini R, Smallwood D, Vlahos R, et al. Serum amyloid A is a biomarker of acute exacerbations of chronic obstructive pulmonary disease. *Am J Respir Crit Care Med*. 2008;177(3):269–78.
60. Cicarelli DD, Vieira JE, Benseñor FE. Comparison of C-reactive protein and serum amyloid A protein in septic shock patients. *Mediators Inflamm*. 2008;2008:631414.
61. Delanghe JR, Langlois MR, De Bacquer D, Mak R, Capel P, Van Rent-erghem L, De Backer G. Discriminative value of serum amyloid A and other acute-phase proteins for coronary heart disease. *Atherosclerosis*. 2002;160(2):471–6.
62. Johnson BD, Kip KE, Marroquin OC, Ridker PM, Kelsey SF, Shaw LJ, Pepine CJ, Sharaf B, Bairey Merz CN, Sopko G, et al. Serum amyloid A as a predictor of coronary artery disease and cardiovascular outcome in women: the National Heart, Lung, and Blood Institute-Sponsored Women's Ischemia Syndrome Evaluation (WISE). *Circulation*. 2004;109(6):726–32.
63. Getz GS, Krishack PA, Reardon CA. Serum amyloid A and atherosclerosis. *Curr Opin Lipidol*. 2016;27(5):531–5.
64. Slater A, Perrella G, Onselar MB, Martin EM, Gauer JS, Xu RG, Heemskerck JW, Ariens RAS, Watson SP. Does fibrin(ogen) bind to monomeric or dimeric GPVI, or not at all? *Platelets*. 2018;30:28.
65. Alshehri OM, Hughes CE, Montague S, Watson SK, Frampton J, Bender M, Watson SP. Fibrin activates GPVI in human and mouse platelets. *Blood*. 2015;126(13):1601–8.
66. Lee SJ, Hong JM, Lee SE, Kang DR, Ovbiagele B, Demchuk AM, Lee JS. Association of fibrinogen level with early neurological deterioration among acute ischemic stroke patients with diabetes. *BMC Neurol*. 2017;17(1):101.
67. Mammadova-Bach E, Ollivier V, Loyau S, Schaff M, Dumont B, Favier R, Freyburger G, Latger-Cannard V, Nieswandt B, Gachet C, et al. Platelet glycoprotein VI binds to polymerized fibrin and promotes thrombin generation. *Blood*. 2015;126(5):683–91.
68. Estevez B, Du X. New concepts and mechanisms of platelet activation signaling. *Physiology (Bethesda, Md)*. 2017;32(2):162–77.
69. Lee MY, Verni CC, Herbig BA, Diamond SL. Soluble fibrin causes an acquired platelet glycoprotein VI signaling defect: implications for coagulopathy. *J Thromb Haemost*. 2017;15(12):2396–407.
70. Page MJ, Thomson GJA, Nunes JM, Engelbrecht AM, Nell TA, de Villiers WJS, de Beer MC, Engelbrecht L, Kell DB, Pretorius E. Serum amyloid A binds to fibrin(ogen), promoting fibrin amyloid formation. *Sci Rep*. 2019;9(1):3102.
71. Pretorius E, Page MJ, Engelbrecht L, Ellis GC, Kell DB. Substantial fibrin amyloidogenesis in type 2 diabetes assessed using amyloid-selective fluorescent stains. *Cardiovasc Diabetol*. 2017;16(1):141.
72. Pretorius E, Mbotwe S, Kell DB. Lipopolysaccharide-binding protein (LBP) reverses the amyloid state of fibrin seen in plasma of type 2 diabetics with cardiovascular co-morbidities. *Sci Rep*. 2017;7(1):9680.
73. Pretorius E, Bester J. Viscoelasticity as a measurement of clot structure in poorly controlled type 2 diabetes patients: towards a precision and personalized medicine approach. *Oncotarget*. 2016;7(32):50895–907.
74. Huo Y, Ley K. Adhesion molecules and atherogenesis. *Acta Physiol Scand*. 2001;173(1):35–43.
75. de Waal GM, Engelbrecht L, Davis T, de Villiers WJS, Kell DB, Pretorius E. Correlative light-electron microscopy detects lipopolysaccharide and its association with fibrin fibres in Parkinson's Disease, Alzheimer's Disease and Type 2 Diabetes Mellitus. *Sci Rep*. 2018;8(1):16798.
76. Bester J, Matshailwe C, Pretorius E. Simultaneous presence of hypercoagulation and increased clot lysis time due to IL-1beta, IL-6 and IL-8. *Cytokine*. 2018;110:237–42.
77. Bester J, Pretorius E. Effects of IL-1beta, IL-6 and IL-8 on erythrocytes, platelets and clot viscoelasticity. *Sci Rep*. 2016;6:32188.
78. Pretorius L, Thomson GJA, Adams RCM, Nell TA, Laubscher WA, Pretorius E. Platelet activity and hypercoagulation in type 2 diabetes. *Cardiovasc Diabetol*. 2018;17(1):141.
79. Welsh P, Murray HM, Ford I, Trompet S, de Craen AJ, Jukema JW, Stott DJ, McInnes IB, Packard CJ, Westendorp RG, et al. Circulating interleukin-10 and risk of cardiovascular events: a prospective study in the elderly at risk. *Arterioscler Thromb Vasc Biol*. 2011;31(10):2338–44.
80. Botha-Scheepers S, Watt I, Slagboom E, de Craen AJ, Meulenbelt I, Rosendaal FR, Breedveld FC, Huizinga TW, Kloppenburg M. Innate production of tumour necrosis factor alpha and interleukin 10 is associated with radiological progression of knee osteoarthritis. *Ann Rheum Dis*. 2008;67(8):1165–9.
81. Moore KW, de Waal Malefyt R, Coffman RL, O'Garra A. Interleukin-10 and the interleukin-10 receptor. *Annu Rev Immunol*. 2001;19:683–765.
82. Xie F, Chan JC, Ma RC. Precision medicine in diabetes prevention, classification and management. *J Diabetes Invest*. 2018;9(5):998–1015.
83. de Vries JK, Levin A, Loud F, Adler A, Mayer G, Pena MJ. Implementing personalized medicine in diabetic kidney disease: stakeholders' perspectives. *Diabetes Obes Metab*. 2018;20(Suppl 3):24–9.

## Publisher's Note

Springer Nature remains neutral with regard to jurisdictional claims in published maps and institutional affiliations.