

A real-time PCR assay to accurately quantify polar bear DNA in fecal extracts

Kristen M. Hayward^{1,*}, Michelle P. Harwood^{1,2,*},
Stephen C. Lougheed¹, Zhengxin Sun¹, Peter Van Coeverden de Groot¹
and Evelyn L. Jensen^{1,3}

¹ Department of Biology, Queen's University, Kingston, ON, Canada

² Department of Molecular Genetics, University of Toronto, Toronto, ON, Canada

³ Department of Ecology and Evolutionary Biology, Yale University, New Haven, CT, USA

* These authors contributed equally to this work.

ABSTRACT

DNA extracted from fecal samples contains DNA from the focal species, food, bacteria and pathogens. Most DNA quantification methods measure total DNA and cannot differentiate among sources. Despite the desirability of noninvasive fecal sampling for studying wildlife populations, low amounts of focal species DNA make it difficult to use for next-generation sequencing (NGS), where accurate DNA quantification is critical for normalization. Two factors are required prior to using fecal samples in NGS libraries: (1) an accurate quantification method for the amount of target DNA and (2) a determination of the relative amount of target DNA needed for successful single nucleotide polymorphism genotyping assays. Here, we address these needs by developing primers to amplify a 101 bp region of the nuclear *F2* gene and a quantitative PCR (qPCR) assay that allows the accurate quantification of the amount of polar bear (*Ursus maritimus*) DNA in fecal extracts. We test the assay on pure polar bear DNA extracted from muscle tissue and find a high correlation between fluorometric and qPCR quantifications. The qPCR assay was also successfully used to quantify the amount of DNA derived from polar bears in fecal extractions. Orthologs of the *F2* gene have been identified across vertebrates; thus, similar qPCR assays could be developed for other species to enable noninvasive studies.

Subjects Biochemistry, Evolutionary Studies, Genetics, Molecular Biology, Zoology

Keywords qPCR, Population genetics, Noninvasive sampling, *Ursus maritimus*

INTRODUCTION

Molecular scatology, the use of fecal samples for genetic analyses, is increasingly being used in ecological and conservation studies of wild animals. Traditionally, scat was used for documenting the abundance and distribution of focal species, or for studying diet based on bone fragments and other prey hard parts (*Robertshaw & Harden, 1985*). *Putman (1984)* was among the first to recognize the value of scat as a source of DNA. Since then, scat-derived DNA has been applied to study various animals, including brown bears (*Ursus arctos*; *Taberlet et al., 1997*), chimpanzees (*Pan troglodytes verus*; *Morin et al., 2001*), seals (*Halichoerus grypus* and *Phoca vitulina*; *Reed et al., 1997*), and gray wolves (*Canis lupus*; *Stenglein et al., 2010*). Scat samples are one means of obtaining DNA for threatened

Submitted 15 October 2019

Accepted 11 March 2020

Published 7 April 2020

Corresponding author

Evelyn L. Jensen,
evelyn.jensen@yale.edu

Academic editor

Xavier Pochon

Additional Information and
Declarations can be found on
page 9

DOI [10.7717/peerj.8884](https://doi.org/10.7717/peerj.8884)

© Copyright
2020 Hayward et al.

Distributed under
Creative Commons CC-BY-NC 4.0

OPEN ACCESS

or endangered species when capture or handling is undesirable ([Stenglein et al., 2010](#)). Data from noninvasive DNA sampling can provide important insights on sex ratios, population size, demography, mating and breeding system, population structure, gene flow, diet and disease ([Frankham, 2010](#)), and can help address important questions in conservation.

Many important questions in conservation genetics are investigated using next generation sequencing (NGS). To reliably use fecal samples for NGS libraries, we first must have a method to quantify the amount of target DNA. Fecal samples contain DNA from both the focal species via cells shed from the intestinal lining and potentially from food/prey items, bacteria, pathogens and parasites ([Kohn & Wayne, 1997](#)). Quantifying DNA amounts from each of these sources poses a challenge. Common DNA quantification tools, including spectrophotometry and fluorometry, measure the total DNA present and cannot apportion contributions from each source. Not knowing the concentration of focal species DNA becomes a critical problem when preparing NGS libraries, as poor normalization across samples can result in uneven sequence depth among individuals, low confidence in scoring genotypes and inaccurate estimates of allele frequency ([Simbolo et al., 2013](#)). Successful and accurate quantification may also identify samples that are unlikely to yield sufficient data, allowing researchers to focus on more promising samples. Thus, there is a need to develop a quick, cost-effective and accurate protocol to quantify focal species DNA in fecal extractions that will allow for normalization.

In this study, we address the challenge of using fecal samples in NGS studies by developing a quantitative PCR (qPCR) assay to quantify the amount of polar bear (*Ursus maritimus*) DNA in extractions from polar bear fecal samples. We show that our method performs well for polar bear DNA quantification in fecal DNA and suggest that similar assays could be useful tools for monitoring programs for other taxa that require noninvasive sampling.

MATERIALS AND METHODS

Primer design, optimization and specificity testing

For our qPCR assay, we selected coagulation factor II (*F2*), a protein coding gene implicated in formation of fibrin clots that is conserved across vertebrates ([Rallapalli et al., 2014](#)). The *F2* gene has been used to assess the species composition of ground meat products because variation in the intronic sequence can allow for species-specific detection ([Floren et al., 2015](#)). We designed three pairs of primers to amplify ~100 base pair (bp) segments of three different introns ([Table 1](#)) using the polar bear genome annotation (accession no. [XM_008701092.1](#)) and Primer3 software (version 0.4.0, [Untergasser et al., 2012](#)). All oligonucleotides were supplied by Eurofins Genomics (TO, Canada) and purified using standard desalting.

To determine the optimal annealing temperature for each primer pair and if there was nonspecific amplification, we ran test PCR using DNA extracted from a single sample of polar bear muscle tissue on an Eppendorf Mastercycler Gradient thermocycler. In a 20 μ L reaction mixture, 0.2 ng of DNA was amplified with 10 μ L GoTaq[®] mastermix (Promega, Madison, WI, USA) and 0.5 μ L 10 μ M of each primer. The PCR cycling profile

Table 1 Primer pairs tested for amplification of F2 gene introns.

Region	Amplicon length (base pairs)	Primer direction	Primer sequence (5'-3')	Primer location on NW_007907185.1
Intron 01	103	F	CAGTGAGCCAGGAGGTCTTGG	2114209.. 2114229
		R	TTTAGGGTTCTGCCACCATCC	2114291.. 2114311
Intron 06	106	F	TCAAGCAGGAAGGAAAGCAT	2111091.. 2111110
		R	GTGAAGGCAGGAGACCAGAG	2111177.. 2111196
Intron 12	101	F	AGGGTAAAGTCCAAGGCATGAC	2099674.. 2099694
		R	GCTGGTGGGTAGAGCTTCTGG	2099754.. 2099774

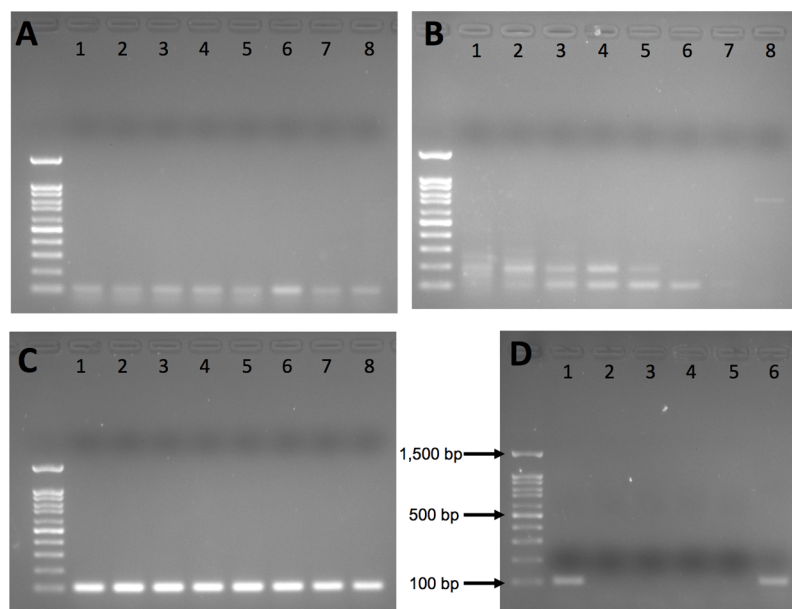


Figure 1 Agarose gel results from initial gradient PCR tests of the three primer pairs. (A) F2_Intron_01, (B) F2_Intron_06 and (C) F2_Intron_12. From lane 1 to lane 8, the annealing temperatures are 54.8 °C, 55.9 °C, 57.3 °C, 58.9 °C, 60.5 °C, 62.2 °C, 63.4 °C and 65 °C, respectively. (D) Amplification results of different DNA templates for F2_intron_12 using 60 °C as the annealing temperature. Lane 1: polar bear muscle DNA; lane 2: seal DNA; lane 3: Arctic char DNA; lane 4: human DNA; lane 5: water (negative control); lane 6: grizzly bear DNA. All gels were run using 100 base pair ladder (Frogga Bio); bands for 100, 500 and 1,500 base pairs (bp) are indicated on (D).

Full-size DOI: 10.7717/peerj.8884/fig-1

was as follows: initial denaturation at 95 °C for 5 min, then 40 cycles of amplification with 95 °C for 10 s, annealing temperatures from 55 °C to 65 °C for 10 s and 72 °C for 10 s, followed by elongation at 72 °C for 5 min. Successful PCR results were confirmed by 2% agarose gel electrophoresis, stained with RedSafe™ Nucleic Acid Staining Solution.

Intron 1 and intron 6 both exhibited nonspecific amplification (Figs. 1A and 1B) and were dropped from further testing. Intron 12 yielded a clean single band on agarose gel for polar bear DNA samples with no nonspecific amplification at any annealing temperature (Fig. 1C); thus, we used 60 °C for all further PCR.

We next tested the species specificity of the intron 12 primers using both in silico and in vitro approaches. We used Primer-BLAST ([Ye et al., 2012](#)) and BLAST ([Altschul et al., 1990](#)) to search for sequence similarity to the genomes of non-target species, including humans and polar bear prey species, such as various small mammals, seals and fish present in the Arctic environment, for which cross-amplification was a concern. We also included closely related bear species, *Ursus arctos* (grizzly bear) and *Ursus americanus* (American black bear), whose ranges partially overlap with polar bears. We directly tested for amplification of human, Arctic char and grizzly bear DNA using the regular PCR with conditions as described above. Human DNA was from an A2780 cell line; grizzly bear and Arctic char DNA was provided by collaborators.

Pure polar bear DNA extraction

To assess the accuracy of the qPCR method, we used “pure” polar bear DNA from eight bears sampled from three subpopulations (Southern Hudson Bay, Gulf of Boothia and Foxe Basin), using tissue samples provided to us by the Government of Nunavut. DNA was extracted from muscle tissue using a salt extraction protocol ([Aljanabi & Martinez, 1997](#)). DNA quantification was performed using a DeNovix DS-11 FX Series fluorometer with DeNovix dsDNA Broad Range Assay Kit (DeNovix Inc., Wilmington, DE, USA) according to the manufacturer’s protocol. We compared the qPCR and fluorometric quantifications using a Pearson’s correlation ([Pearson, 1895](#)) in R ([R Development Core Team, 2010](#)).

Fecal DNA extraction

We used DNA extracted from feces collected directly from inside the colon of bears that had been harvested by hunters ($n = 25$) provided to us by the Government of Nunavut (Wildlife Research Permit WL 2018-006). After harvesting, the colons were stored at $-20\text{ }^{\circ}\text{C}$ until they were thawed for dissection. Colons were cut open and feces were removed, with care taken to not disturb the epithelium of the intestine. Genomic DNA was extracted from the fecal samples (approximately 180–220 mg) in a Biosafety Level 2 laboratory using a Qiagen QIAmp Fast DNA Stool Mini Kit (Qiagen Inc., Hilden, Germany) according to manufacturer’s protocol. DNA quantification was performed as for the muscle tissue samples.

Quantification with qPCR

qPCR reactions were done on a CFX96 TouchTM Real-Time PCR Detection System (Bio-Rad Laboratories Canada, Mississauga, ON, Canada) in 20 μL reaction mixture with 10 μL PowerUpTM SYBR[®] Green Master Mix (Thermo Fisher Scientific, Toronto, ON, Canada), 0.5 μL 10 μM final concentration of forward and reverse primers respectively and 2.5 μL of DNA template. The cycling profile was as follows: initial incubation at $50\text{ }^{\circ}\text{C}$ for 2 min and $95\text{ }^{\circ}\text{C}$ for 2 min, followed by 40 cycles of $95\text{ }^{\circ}\text{C}$ for 15 s and $60\text{ }^{\circ}\text{C}$ for 60 s. A final melt curve step was added after the amplification cycles, from $65\text{ }^{\circ}\text{C}$ to $95\text{ }^{\circ}\text{C}$ with incubation for 5 s at each temperature and temperature increased by $0.5\text{ }^{\circ}\text{C}$ increments each cycle. Standard curves were created using high-quality pure DNA samples

Table 2 Primer-BLAST and BLASTN results of amplicons expected from the F2 intron 12 primer pair for Arctic species. Included in the table are hits that would produce amplicons. Species that were evaluated with no amplicon producing hits: *Alces alces* (American moose), *Anser caerulescens* (Snow goose), *Balaena mysticetus* (Bowhead whale), *Balaenoptera acutorostrata* (Minke whale), *Balaenoptera physalus* (Fin whale), *Boreogadus saida* (Polar cod), *Branta canadensis* (Canada goose), *Canis lupus arctos* (Arctic wolf), *Cystophora cristata* (Hooded seal), *Delphinapterus leucas* (Beluga whale), *Dicrostonyx groenlandicus* (Lemming), *Dicrostonyx hudsonius* (Lemming), *Erignathus barbatus* (Bearded seal), *Eschrichtius robustus* (Grey whale), *Histiophoca fasciata* (Ribbon seal), *Homo sapiens* (Human), *Larus argentatus* (Herring gull), *Lemmus sibiricus* (Siberian brown lemming), *Lepus arcticus* (Arctic hare), *Monodon monoceros* (Narwhal), *Mustela erminea* (Ermine), *Myoxocephalus quadricornis* (Fourhorn sculpin), *Ondatra zibethicus* (Muskrat), *Ovibos moschatus* (Muskox), *Pagophilus groenlandicus* (Harp seal), *Phoca largha* (Spotted seal), *Pusa hispida* (Ringed seal), *Rangifer tarandus* (Caribou/reindeer), *Reinhardtius hippoglossoides* (Greenland halibut), *Salmo salar* (Atlantic salmon), *Somateria mollissima* (Common eider), *Somniosus microcephalus* (Greenland shark), *Vulpes lagopus* (Arctic fox).

Species	Gene name/chromosome location	Forward primer mismatches	Reverse primer mismatches	Amplicon length (base pairs)
<i>Ursus maritimus</i> (Polar bear)	F2/NW_007907185.1 (2099674.. 2099774)	0	0	101
<i>Ursus arctos</i> (Grizzly bear)	F2/NW_020656153.1 (1273581.. 1273681)	0	0	101
<i>Ursus americanus</i> (American black bear)	LZNR01006541.1 (2577..2675)	0	0	99
<i>Odobenus rosmarus</i> (Walrus)	F2/NW_004450361.1 (1452127.. 1452228)	3	4	102
	NW_004451026.1 (978853.. 979724)	5	5	872
<i>Physeter catodon</i> (Sperm whale)	NC_041218.1 (20318453.. 20320,487)	4	5	2,035
	NC_041216.1 (17373001.. 17373563)	5	4	563
<i>Microtus ochrogaster</i> (Meadow vole)	LOC101993482I/NW_004949111.1 (7953849.. 7955477)	4	5	1,629
<i>Salvelinus alpinus</i> (Arctic char)	NC_036855.1 (58986567.. 58987750)	5	5	1,184
	NC_036850.1 (14661252.. 14664675)	5	5	3,424

extracted from polar bear muscle tissues. Muscle DNA was quantified with Denovix first, after which we did a serial dilution: 17.4 ng, 1.74 ng, 0.174 ng, 0.0174 ng and 0.00174 ng per μL . The standard curve and the concentration of DNA samples were analyzed using the CFX Manager Software ver. 3.1 (Bio-Rad Laboratories Canada, Mississauga, ON, Canada). All qPCR amplifications were performed in triplicate for each sample, including the standards and negative controls.

RESULTS

Our in silico and in vivo assessments of the specificity of the intron 12 primers indicate that they will not produce amplicons near the target size for polar bear prey species or human DNA (Table 2; Fig. 1D). However, the primers are not species-specific, as they also amplified a ~100 bp fragment in the PCR with grizzly bear DNA (Fig. 1D), and would be expected to work equally well for American black bear, given that there are no mismatches between the primer sequences and the reference genomes (Table 2). Despite having several mismatches, it is possible that the primers may also amplify a region in F2 gene based on alignment to the walrus (*Odobenus rosmarus*) genome, but this would require additional testing to determine.

For all qPCR reactions with polar bear DNA, all standard curves had R^2 greater than 0.97. No template negative controls had detectable SYBR[®] Green fluorescence signal until

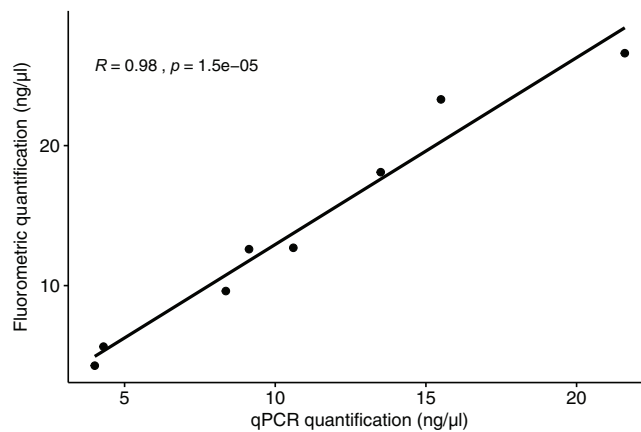


Figure 2 Correlation between the quantification results for polar bear muscle DNA from the qPCR assay and the fluorometric method. *R* value is based on a Pearson correlation.

Full-size DOI: 10.7717/peerj.8884/fig-2

the end of the 40-cycle qPCR reaction. For all samples used for standard curves, the melt curves had a single peak at 81.5 °C, confirming the amplification of a single PCR product consistent with the agarose gel electrophoresis results.

Some fecal DNA samples (3 of 25 or 12%) had no signal throughout the 40-cycle reaction, indicating low polar bear genomic DNA (not detectable) in these samples. When there were fluorescence signals, qPCR reactions showed a single peak at 81.5 °C on the melt curve.

The qPCR results for polar bear DNA extracted from muscle closely matched our expected quantifications based on fluorometry (Fig. 2). The fluorometric quantification of the total DNA in the fecal extracts ranged from 493 to 0.5 ng/μL, while the qPCR quantification of polar bear DNA ranged from 381 to 0.1 ng/μL (Fig. 3). The proportion of polar bear DNA in fecal extractions (i.e., the ratio of polar bear DNA measured in the qPCR to the total DNA from the fluorometric quantification) ranged from 0.02 to 1.02 (mean = 0.5, Standard Deviation = 0.32).

DISCUSSION

Our goal in developing a qPCR assay was to quantify the amount of polar bear DNA in extractions from fecal samples, so that we can accurately normalize DNA in downstream reactions and identify samples that are unlikely to have enough focal species DNA to yield usable data. The high correlation between the quantifications from qPCR and fluorometry for the polar bear tissue DNA (Fig. 2) demonstrates that the assay does quantify polar bear DNA accurately. We found that the primers will also amplify a similar sized amplicon for grizzly bear DNA and is likely to work similarly for American black bear DNA based on analysis of the genome sequence. These results suggest that the assay may be useful for quantification of DNA from all three species of bear in North America, which are each of conservation and management interest. Despite having slight portions of their ranges overlapping with those of polar bears, grizzly and American black bears demonstrate temporal differences in resource and habitat use

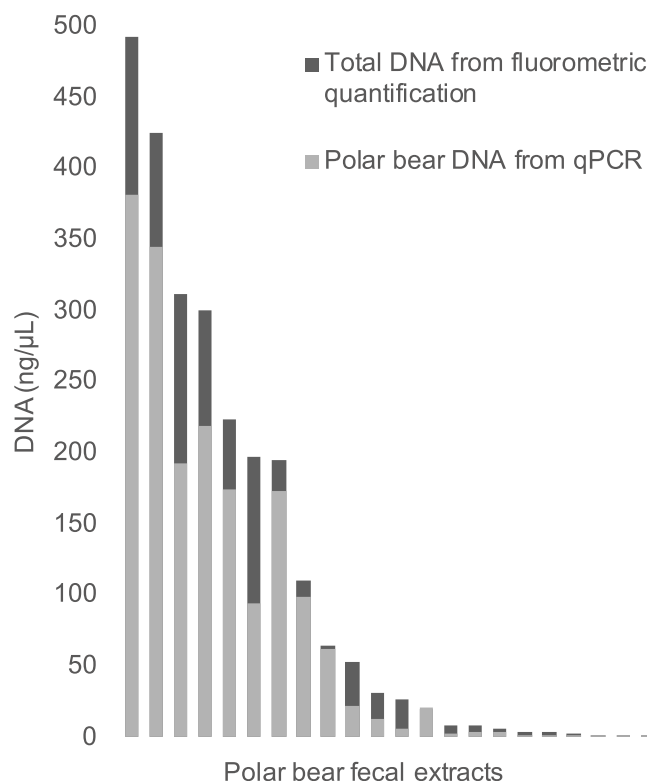


Figure 3 The total DNA in fecal extractions as measured by fluorometry and the portion identified to be polar bear DNA using the qPCR assay. [Full-size !\[\]\(fd7fe780e8fd8eece60268c87d0c3e04_img.jpg\) DOI: 10.7717/peerj.8884/fig-3](https://doi.org/10.7717/peerj.8884/fig-3)

(Clark *et al.*, 2019; Miller, Wilder & Wilson, 2015), and thus their feces are not likely to be mistaken for that of polar bears. Even if samples were to be accidentally collected from a non-target species, these would be detected in the downstream NGS genotyping step.

Although the proportion of polar bear DNA detected in the fecal extractions varied widely (Fig. 3), this reflects the heterogeneous nature of feces, which has been an ongoing challenge in molecular scatology. Across a wide range of species diet, meal size, contaminants and sampling conditions all have been shown to influence DNA detectability (Hofreiter *et al.*, 2010; Oehm *et al.*, 2011; Thalinger *et al.*, 2017). Additionally, DNA in fecal samples is typically highly degraded and a robust method for determining DNA quality from these samples is highly sought after, as reflected by the numerous approaches developed to measure DNA quality in various situations (Ayala-Torres *et al.*, 2000; Deagle, Eveson & Jarman, 2006; Mitchell, Willerslev & Hansen, 2005). Our method contributes to these approaches, as we provide a method to directly measure the amount of polar bear DNA in an extraction, allowing for the comparison of various extraction methods to increase the yield of target DNA. It should be noted that in this study we have used feces dissected directly from colons, not droppings collected in the field, which may be why the proportions of DNA are so high for some samples. The qPCR assay developed here will be used as part of a protocol to genotype feces using targeted amplicon sequencing, as part of an effort to develop a new means to assess polar bear demography and population health in near real time across the Canadian Arctic.

This method for quantifying polar bear DNA in fecal samples could readily be adapted for other species. In general, primers targeting intronic regions are more likely to be taxon specific, due to high sequence variability among homologous introns. qPCR works best with amplicons between 100 and 120 bp long, with primers ~20 bp long. Testing the taxon specificity of primers using *in silico* and *in vivo* approaches is important, as we demonstrate in this study. Because the sensitivity, detection and quantitation limits will differ across primers, it will also be important to explore these variables to validate any qPCR assay (Bunce, Oskam & Allentoft, 2012).

F2 orthologs have been identified in 120 mammalian species, including humans (*Homo sapiens*), house mice (*Mus musculus*), pigs (*Sus scrofa*), dogs (*Canis lupus familiaris*) and horses (*Equus caballus*) (NCBI, 2019). Among these are numerous endangered species, according to the IUCN Red List of Threatened Species, such as Sumatran orangutan (*Pongo abelii*), Western gorilla (*Gorilla gorilla*), and Amur tiger (*Panthera tigris altaica*) (IUCN, 2019). Field-based scat sampling could thus be coupled with assays similar to ours to allow for accurate and noninvasive sampling techniques to aid in investigating population dynamics related to species conservation. In addition to mammals, 124 other vertebrates have an *F2* ortholog identified in their genomes, making a total of 244 taxa (IUCN, 2019). These species span the tree of life and include birds, bony fishes, lizards, turtles, amphibians and cartilaginous fishes. In addition to quantifying target species DNA in fecal extractions, such quantification assays could be used to identify contamination in other sample types, as well as identify the relative proportions of species in mixed samples, such as ground meats (Floren *et al.*, 2015 who used droplet digital PCR) or powdered animal products used in traditional medicine.

CONCLUSIONS

In this work we have developed a quantitative PCR assay that can be used to accurately determine the amount of polar bear DNA in a mixed extract, such as that from feces. We tested the species specificity of the assay using both *in silico* and *in vitro* approaches and found that the assay will not amplify non-target species likely to be found in the polar bear's environment, but may work just as well for other North American bear species as it does for polar bears. We have outlined how similar assays could be readily be developed for other target species using orthologs of the *F2* gene.

ACKNOWLEDGEMENTS

We thank the BEARWATCH team of collaborators for their support, as well as the Inuvialuit Game Council, Gjoa Haven Hunters and Trappers Association, Canadian Rangers and all of the communities participating in BEARWATCH. We further acknowledge the support of Markus Dyck, Marsha Branigan and the Governments of Nunavut and Northwest Territories. Thanks to Michael Russello and Danielle Schmidt for their input on the assay design, Kristy Moniz for supplying the seal DNA, John Paczkowski for supplying the grizzly bear DNA, Peter Truesdell for providing the human DNA, Rute Clemente-Carvalo and Almira Siew for lending us their expertise in the lab,

Jacqueline Monaghan for allowing us access to her Real Time PCR machine, and Kimberly McClintock Flock for administrative support.

ADDITIONAL INFORMATION AND DECLARATIONS

Funding

This work was funded by the Government of Canada through Genome Canada and the Ontario Genomics Institute (OGI-123). Evelyn L. Jensen was supported by a Natural Science and Engineering Council of Canada (NSERC) postdoctoral fellowship. Michelle P. Harwood and Kristen M. Hayward were supported by Undergraduate Student Research Awards from NSERC. The funders had no role in study design, data collection and analysis, decision to publish, or preparation of the manuscript.

Grant Disclosures

The following grant information was disclosed by the authors:
Genome Canada and the Ontario Genomics Institute: OGI-123.
Natural Science and Engineering Council of Canada (NSERC).
Undergraduate Student Research Awards from NSERC.

Competing Interests

The authors declare that they have no competing interests.

Author Contributions

- Kristen M. Hayward performed the experiments, analyzed the data, prepared figures and/or tables, authored or reviewed drafts of the paper, and approved the final draft.
- Michelle P. Harwood conceived and designed the experiments, performed the experiments, analyzed the data, authored or reviewed drafts of the paper, and approved the final draft.
- Stephen C. Lougheed conceived and designed the experiments, authored or reviewed drafts of the paper, and approved the final draft.
- Zhengxin Sun conceived and designed the experiments, performed the experiments, analyzed the data, prepared figures and/or tables, authored or reviewed drafts of the paper, and approved the final draft.
- Peter Van Coeverden de Groot conceived and designed the experiments, authored or reviewed drafts of the paper, and approved the final draft.
- Evelyn L. Jensen conceived and designed the experiments, performed the experiments, analyzed the data, prepared figures and/or tables, authored or reviewed drafts of the paper, and approved the final draft.

Animal Ethics

The following information was supplied relating to ethical approvals (i.e., approving body and any reference numbers):

We used DNA extracted from feces collected directly from inside the colon of bears that had been harvested by hunters ($n = 25$) provided to us by the Government of Nunavut (Wildlife Research Permit WL 2018-006).

Data Availability

The following information was supplied regarding data availability:

Raw data is available in the [Supplemental Files](#), including the uncropped images of the gels used in [Fig. 1](#).

Supplemental Information

Supplemental information for this article can be found online at <http://dx.doi.org/10.7717/peerj.8884#supplemental-information>.

REFERENCES

- Aljanabi SM, Martinez I. 1997.** Universal and rapid salt-extraction of high quality genomic DNA for PCR-based techniques. *Nucleic Acids Research* **25(22)**:4692–4693
DOI [10.1093/nar/25.22.4692](https://doi.org/10.1093/nar/25.22.4692).
- Altschul SF, Gish W, Miller W, Myers EW, Lipman DJ. 1990.** Basic local alignment search tool. *Journal of Molecular Biology* **215(3)**:403–410 DOI [10.1016/S0022-2836\(05\)80360-2](https://doi.org/10.1016/S0022-2836(05)80360-2).
- Ayala-Torres S, Chen Y, Svoboda T, Rosenblatt J, Van Houten B. 2000.** Analysis of gene-specific DNA damage and repair using quantitative polymerase chain reaction. *Methods* **22(2)**:135–147
DOI [10.1006/meth.2000.1054](https://doi.org/10.1006/meth.2000.1054).
- Bunce M, Oskam CL, Allentoft ME. 2012.** Quantitative real-time PCR in aDNA research. *Methods in Molecular Biology* **840**:121–132 DOI [10.1007/978-1-61779-516-9_16](https://doi.org/10.1007/978-1-61779-516-9_16).
- Clark DA, Brook R, Oliphant-Reskanski C, Laforge MP, Olson K, Rivet D. 2019.** Novel range overlap of three ursids in the Canadian subarctic. *Arctic Science* **5(1)**:62–70
DOI [10.1139/as-2018-0013](https://doi.org/10.1139/as-2018-0013).
- Deagle BE, Eveson JP, Jarman SN. 2006.** Quantification of damage in DNA recovered from highly degraded samples—a case study on DNA in faeces. *Frontiers in Zoology* **3(1)**:11
DOI [10.1186/1742-9994-3-11](https://doi.org/10.1186/1742-9994-3-11).
- Floren C, Wiedemann I, Brenig B, Schutz E, Beck J. 2015.** Species identification and quantification in meat and meat products using droplet digital PCR (ddPCR). *Food Chemistry* **173**:1054–1058 DOI [10.1016/j.foodchem.2014.10.138](https://doi.org/10.1016/j.foodchem.2014.10.138).
- Frankham R. 2010.** Challenges and opportunities of genetic approaches to biological conservation. *Biological Conservation* **143(9)**:1919–1927 DOI [10.1016/j.biocon.2010.05.011](https://doi.org/10.1016/j.biocon.2010.05.011).
- Hofreiter M, Kreuz E, Eriksson J, Schubert G, Hohmann G. 2010.** Vertebrate DNA in fecal samples from bonobos and gorillas: evidence for meat consumption or artefact? *PLOS ONE* **5(2)**:e9419 DOI [10.1371/journal.pone.0009419](https://doi.org/10.1371/journal.pone.0009419).
- IUCN. 2019.** *IUCN red list of threatened species*. Version 2018-2. Available at <http://www.iucnredlist.org>.
- Kohn MH, Wayne RK. 1997.** Facts from feces revisited. *Trends in Ecology & Evolution* **12(6)**:223–227 DOI [10.1016/S0169-5347\(97\)01050-1](https://doi.org/10.1016/S0169-5347(97)01050-1).
- Miller S, Wilder J, Wilson RR. 2015.** Polar bear–grizzly bear interactions during the autumn open-water period in Alaska. *Journal of Mammalogy* **96(6)**:1317–1325
DOI [10.1093/jmammal/gyv140](https://doi.org/10.1093/jmammal/gyv140).
- Mitchell D, Willerslev E, Hansen A. 2005.** Damage and repair of ancient DNA. *Mutation Research/Fundamental and Molecular Mechanisms of Mutagenesis* **571(1–2)**:265–276
DOI [10.1016/j.mrfmmm.2004.06.060](https://doi.org/10.1016/j.mrfmmm.2004.06.060).
- Morin PA, Chambers KE, Boesch C, Vigilant L. 2001.** Quantitative polymerase chain reaction analysis of DNA from noninvasive samples for accurate microsatellite genotyping of wild

- chimpanzees (*Pan troglodytes verus*). *Molecular Ecology* **10**(7):1835–1844
DOI 10.1046/j.0962-1083.2001.01308.x.
- NCBI. 2019. National Center for Biotechnology Information. Available at <https://www.ncbi.nlm.nih.gov/>.
- Oehm J, Juen A, Nagiller K, Neuhauser S, Traugott M. 2011. Molecular scatology: how to improve prey DNA detection success in avian faeces? *Molecular Ecology Resources* **11**(4):620–628 DOI 10.1111/j.1755-0998.2011.03001.x.
- Pearson K. 1895. Notes on regression and inheritance in the case of two parents. *Proceedings of the Royal Society of London* **58**:240–242 DOI 10.1098/rspl.1895.0041.
- Putman RJ. 1984. Facts from faeces. *Mammal Review* **14**(2):79–97
DOI 10.1111/j.1365-2907.1984.tb00341.x.
- R Development Core Team. 2010. *R: a language and environment for statistical computing*. Vienna: The R Foundation for Statistical Computing. Available at <http://www.R-project.org/>.
- Rallapalli PM, Orengo CA, Studer RA, Perkins SJ. 2014. Positive selection during the evolution of the blood coagulation factors in the context of their disease-causing mutations. *Molecular Biology and Evolution* **31**(11):3040–3056 DOI 10.1093/molbev/msu248.
- Reed JZ, Tollit DJ, Thompson PM, Amos W. 1997. Molecular scatology: the use of molecular genetic analysis to assign species, sex and individual identity to seal faeces. *Molecular Ecology* **6**(3):225–234 DOI 10.1046/j.1365-294X.1997.00175.x.
- Robertshaw JD, Harden RH. 1985. The ecology of the dingo in North-Eastern New South Wales. 3. analysis of Macropod bone fragments found in Dingo scats. *Wildlife Research* **12**(2):163
DOI 10.1071/WR9850163.
- Simbolo M, Gottardi M, Corbo V, Fassan M, Mafficini A, Malpeli G, Lawlor RT, Scarpa A. 2013. DNA qualification workflow for next generation sequencing of histopathological samples. *PLOS ONE* **8**(6):e62692 DOI 10.1371/journal.pone.0062692.
- Stenglein JL, De Barba M, Ausband DE, Waits LP. 2010. Impacts of sampling location within a faeces on DNA quality in two carnivore species. *Molecular Ecology Resources* **10**(1):109–114
DOI 10.1111/j.1755-0998.2009.02670.x.
- Taberlet P, Camarra JJ, Griffin S, Uhres E, Hanotte O, Waits LP, Dubois-Paganon C, Burke T, Bouvet J. 1997. Noninvasive genetic tracking of the endangered Pyrenean brown bear population. *Molecular Ecology* **6**(9):869–876 DOI 10.1111/j.1365-294X.1997.tb00141.x.
- Thalinger B, Oehm J, Obwexer A, Traugott M. 2017. The influence of meal size on prey DNA detectability in piscivorous birds. *Molecular Ecology Resources* **17**(6):e174–e186
DOI 10.1111/1755-0998.12706.
- Untergasser A, Cutcutache I, Koressaar T, Ye J, Faircloth BC, Remm M, Rozen SG. 2012. Primer3—new capabilities and interfaces. *Nucleic Acids Research* **40**(15):e115
DOI 10.1093/nar/gks596.
- Ye J, Coulouris G, Zaretskaya I, Cutcutache I, Rozen S, Madden TL. 2012. Primer-BLAST: a tool to design target-specific primers for polymerase chain reaction. *BMC Bioinformatics* **13**(1):134
DOI 10.1186/1471-2105-13-134.