



Prospective Study

Do preoperative pancreatic computed tomography attenuation index and enhancement ratio predict pancreatic fistula after pancreaticoduodenectomy?

Senthil Gnanasekaran, Satish Durgesh, Ramprakash Gurram, Raja Kalayarasan, Biju Pottakkat, M Rajeswari, Bheemanathi Hanuman Srinivas, A Ramesh, Jayaprakash Sahoo

Specialty type: Radiology, nuclear medicine and medical imaging

Provenance and peer review: Invited article; Externally peer reviewed.

Peer-review model: Single blind

Peer-review report's scientific quality classification

Grade A (Excellent): 0
Grade B (Very good): 0
Grade C (Good): 0
Grade D (Fair): 0
Grade E (Poor): 0

P-Reviewer: Bencini L, Italy; Yang F, China

A-Editor: Morozov S

Received: January 29, 2022

Peer-review started: January 29, 2022

First decision: April 10, 2022

Revised: April 26, 2022

Accepted: June 20, 2022

Article in press: June 20, 2022

Published online: June 28, 2022



Senthil Gnanasekaran, Satish Durgesh, Ramprakash Gurram, Raja Kalayarasan, Biju Pottakkat, Department of Surgical Gastroenterology, Jawaharlal Institute of Postgraduate Medical Education and Research, Puducherry 605006, India

M Rajeswari, Department of Biostatistics, Jawaharlal Institute of Postgraduate Medical Education and Research, Puducherry 605006, India

Bheemanathi Hanuman Srinivas, Department of Pathology, Jawaharlal Institute of Postgraduate Medical Education and Research, Puducherry 605006, India

A Ramesh, Department of Radiodiagnosis, Jawaharlal Institute of Postgraduate Medical Education and Research, Puducherry 605006, India

Jayaprakash Sahoo, Department of Endocrinology, Jawaharlal Institute of Postgraduate Medical Education and Research, Puducherry 605006, India

Corresponding author: Raja Kalayarasan, DNB, MCh, MS, Additional Professor, Department of Surgical Gastroenterology, Jawaharlal Institute of Postgraduate Medical Education and Research, Room No. 5442, 4th Floor, Super Specialty Block, Puducherry-605006, India.

kalayarasanraja@yahoo.com

Abstract

BACKGROUND

The commonly used predictors of clinically relevant postoperative pancreatic fistula (CR-POPF) following pancreaticoduodenectomy (PD) have subjective assessment components and can be used only in the postoperative setting. Also, the available objective predictors based on preoperative cross-sectional imaging were not prospectively studied.

AIM

To evaluate the accuracy of the pancreatic attenuation index (PAI) and pancreatic enhancement ratio (PER) for predicting CR-POPF following PD and its correlation with pancreatic fat fraction and fibrosis.

METHODS

A prospective observational study included patients who underwent PD for benign and malignant pathology of the periampullary region or pancreatic head between February 2019 and February 2021. Patients undergoing extended or total pancreatectomy and those with severe atrophy of pancreatic tissue or extensive parenchymal calcifications in the pancreatic head and neck precluding calculation of PAI and PER were excluded from the study. Preoperatively PAI was measured in the neck of the pancreas by marking regions of interest (ROI) in the non-contrast computed tomography (CT), and PER was measured during the contrast phase of the CT abdomen. Also, the fibrosis score and fat fraction of the pancreatic neck were assessed during the histopathological examination. Demographic, clinical and preoperative radiological indices (PAI, PER) were evaluated to predict CR-POPF. Preoperative pancreatic neck CT indices were correlated with the histopathological assessment of fat fraction and fibrosis.

RESULTS

Of the 70 patients who underwent PD, 61 patients fulfilling the inclusion criteria were included in the analysis. The incidence of CR-POPF was 29.5% (18/61). PAI had no association with the development of CR-POPF. Of the preoperative parameters, PER (mean \pm standard deviation [SD]) was significantly lower in patients developing CR-POPF (0.58 ± 0.20 vs 0.81 ± 0.44 , $P = 0.006$). The area under the curve for the PER was 0.661 (95%CI: 0.517-0.804), which was significant ($P = 0.049$). PER cut-off of 0.673 predicts CR-POPF with 77.8% sensitivity and 55.8% specificity. PAI and PER had a weak negative correlation (Strength-0.26, $P = 0.037$). Also, PER showed a moderately positive correlation with fibrosis (Strength 0.50, $P < 0.001$). Patients with CR-POPF had a significantly higher incidence of the intraabdominal abscess (50% vs 2.3%, $P < 0.001$), delayed gastric emptying (83.3% vs 30.2, $P < 0.001$), and prolonged mean (\pm SD) postoperative hospital stay (26.8 ± 13.9 vs 9.6 ± 3.6 , $P = 0.001$).

CONCLUSION

PER exhibited good accuracy in predicting the development of CR-POPF. PER additionally showed a good correlation with PAI and fibrosis scores and may be used as an objective preoperative surrogate for assessing pancreatic texture. However, ROI-based PAI did not show any association with CR-POPF and pancreatic fat fraction.

Key Words: Pancreatic fistula; Minimally invasive; Pancreaticoduodenectomy; Pancreatic cancer; Neoplasms; Computed tomography

©The Author(s) 2022. Published by Baishideng Publishing Group Inc. All rights reserved.

Core Tip: The prospective observational study evaluated the accuracy of the pancreatic computed tomography indices in predicting clinically relevant pancreatic fistula after pancreaticoduodenectomy. Though the predictive accuracy of pancreatic attenuation index (PAI) was low, pancreatic enhancement ratio (PER) exhibited good accuracy in predicting the development of clinically relevant postoperative pancreatic fistula (CR-POPF). Also, PER showed a statistically significant weak negative correlation with PAI and moderately positive correlation with fibrosis scores suggesting that PER may be an objective preoperative surrogate for assessing pancreatic texture. Preoperative quantification of PER can improve the risk stratification and management of patients at high risk of CR-POPF.

Citation: Gnanasekaran S, Durgesh S, Gurram R, Kalayarsan R, Pottakkat B, Rajeswari M, Srinivas BH, Ramesh A, Sahoo J. Do preoperative pancreatic computed tomography attenuation index and enhancement ratio predict pancreatic fistula after pancreaticoduodenectomy? *World J Radiol* 2022; 14(6): 165-176

URL: <https://www.wjgnet.com/1949-8470/full/v14/i6/165.htm>

DOI: <https://dx.doi.org/10.4329/wjr.v14.i6.165>

INTRODUCTION

Pancreaticoduodenectomy (PD) has been established as the standard surgical treatment for resectable pancreatic head cancer and periampullary tumors. Advances in surgical technology and perioperative care have reduced PD-related mortality from roughly 20% to less than 5%[1]. But the morbidity following a PD continues to remain high[2]. Hence, the focus has shifted to make PD a less morbid procedure. The most feared consequence of PD is postoperative pancreatic fistula (POPF)[1,2]. POPF is frequently linked to a lengthy and challenging hospital stay that imposes a significant social and

financial burden. Despite numerous novel perioperative therapies, there has been no substantial reduction in reported POPF rates[2,3].

The implications of identifying patients at risk of clinically relevant POPF (CR-POPF) are manifold. To begin, we can tailor surgical procedures to high-risk factors by making modifications that have been demonstrated to reduce the occurrence of CR-POPF. Second, high-risk patients can be closely assessed for the need for early intervention to avoid the disastrous consequences of POPF. Finally, it helps identify low-risk patients in whom the enhanced recovery after surgery (ERAS) pathway may be implemented confidently. Commonly used predictive models for POPF, such as the Fistula Risk Score (FRS), modified FRS, and Day 1 Drain Fluid Amylase estimation, can be used only in the postoperative setting[4-6]. Attenuation and enhancement patterns of pancreatic parenchyma on computed tomography (CT) were studied as preoperative predictors of CR-POPF[7-11]. While pancreatic attenuation index (PAI) can quantify pancreatic fat, pancreatic enhancement ratio (PER) has been correlated with pancreatic fibrosis. Therefore, the presence of a higher preoperative mean PER and lower PAI can be considered protective against the development of CR-POPF after PD[7-11]. However, the predictive accuracy of these indices for CR-POPF was not prospectively studied. Also, the distribution of fat and fibrosis within the pancreas varies, with pancreatic neck fat and fibrosis assuming relevance since it is the site of anastomosis, which previous studies have not addressed. Also, no previous research has prospectively correlated preoperative PAI and PER with histological pancreatic fat fraction and fibrosis, particularly in the neck. The present study aims to calculate the accuracy of the pancreatic neck PAI and PER in predicting CR-POPF and its correlation with histological pancreatic neck fat fraction and fibrosis scoring.

MATERIALS AND METHODS

Patient selection

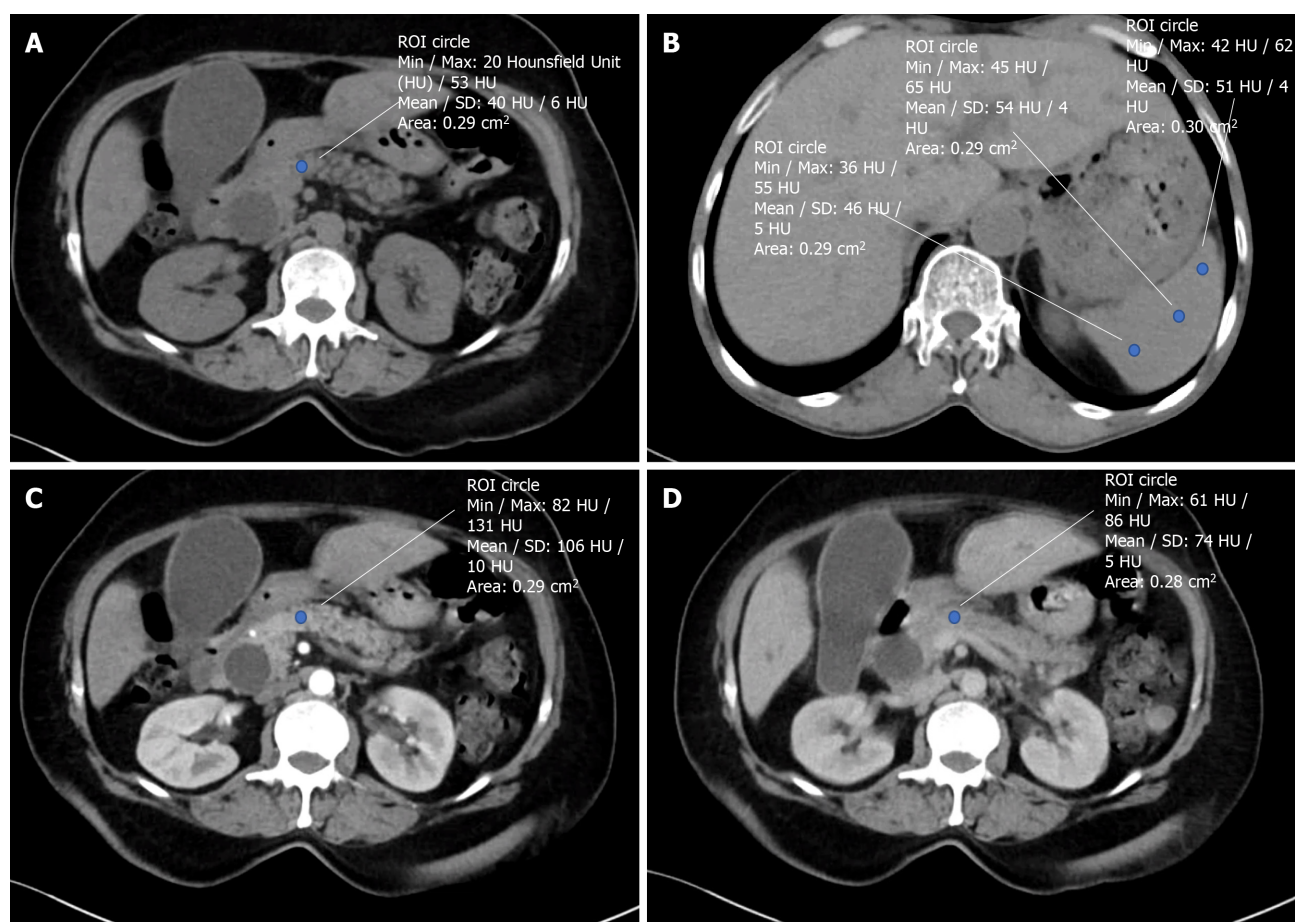
Patients above 18 years of age who underwent elective PD for both benign and malignant pathology involving periampullary and pancreatic head from February 2019 to February 2021 and consented to participate were assessed for inclusion in the prospective observational study. Patients undergoing extended or total pancreatectomy and those with contraindication to undergo preoperative contrast-enhanced CT (CECT) or severe atrophy of pancreatic tissue or extensive parenchymal calcifications in the pancreatic head and neck precluding calculation of PAI and PER were excluded from the study. Also, patients who died in the immediate postoperative period (< 48 h) were excluded from the analysis. The study was approved by the Institute's scientific advisory and Ethics Committee (JIP/IEC/2018/500 dated 25-01-2019).

Preoperative CT protocol

As part of the routine evaluation, all patients underwent a pancreatic protocol CECT. Non-contrast and CECT of the abdomen and pelvis were performed using a 128 slice CT scanner (Somatom™ Definition Edge, M/s Siemens, Erlangen, Germany). Intravenous iodinated contrast media Iohexol with 300mg Iodine concentration (Contrapaque™300, JB chemicals and pharmaceuticals limited, India) was administered at a dose of 1.5 mL/ kg body weight at the rate of 3-4 mL/s followed by 20 mL of the saline chase at 3 mL/s. A dual head pressure injector (Medrad®Stellant D pedestal-mount with Certegra® Workstation) was used for contrast injection. Scans were triggered using the Bolus tracking technique when the threshold of 150HU was reached in the upper abdominal aorta. Contrast-enhanced scans included late arterial phase at 30-40 sec from the start of contrast injection (12-15 sec after bolus tracking), portal venous phase at 60-70 sec (25-30 secs delay after the arterial phase) and equilibrium phase at 3 min from contrast injection. The plain and contrast-enhanced images were reconstructed at 3 mm thickness and viewed in a picture archiving and communication system workstation using Centricity™ Universal Viewer Zero Footprint (GE, United States). On non-enhanced CT images, Hounsfield Units (HU) represents tissue density, while on contrast-enhanced CT images, it represents a measure of combination involving density and vascularity (18). Attenuation (HU) was measured in the neck of the pancreas and spleen, and attenuation values were calculated with regions of interest (ROI) of 0.2-0.3 cm². The mean of 3 ROI values obtained in the neck region divided by splenic attenuation gave the PAI of the pancreatic neck (Figure 1). PER was calculated in the neck of the pancreas as (EP-Pre)/(AP-Pre) (AP-arterial phase, pre-nonenhanced phase, EP-equilibrium phase)[11].

Surgery

All patients underwent pylorus resecting PD at the surgeon's discretion using an open, laparoscopic, or robot-assisted technique. All operations were performed by three qualified surgeons with extensive experience in pancreatobiliary surgery. Pancreaticojejunostomy (PJ) was performed using modified Blumgart or a modified invagination technique depending on the size of the pancreatic duct at the surgeon's discretion. Hepaticojejunostomy (HJ) was done 15 cm distal to PJ by Blumgart Kelly technique. Antecolic Gastrojejunostomy was done about 50 cm distal to the HJ. Two abdominal drains were placed, one in the subhepatic space near HJ and the other one adjacent to the PJ. Feeding



DOI: 10.4329/wjr.v14.i6.165 Copyright © The Author(s) 2022.

Figure 1 Calculation of preoperative radiological indices. A: Hounsfield unit (HU) of the pancreatic neck in plain phase; B: HU of the spleen in plain phase; C: HU of the pancreatic neck in the arterial phase; D: HU of the pancreatic neck in the equilibrium phase. ROI: Region of interest.

jejunostomy was done routinely for early postoperative enteral feeding.

Histopathological evaluation

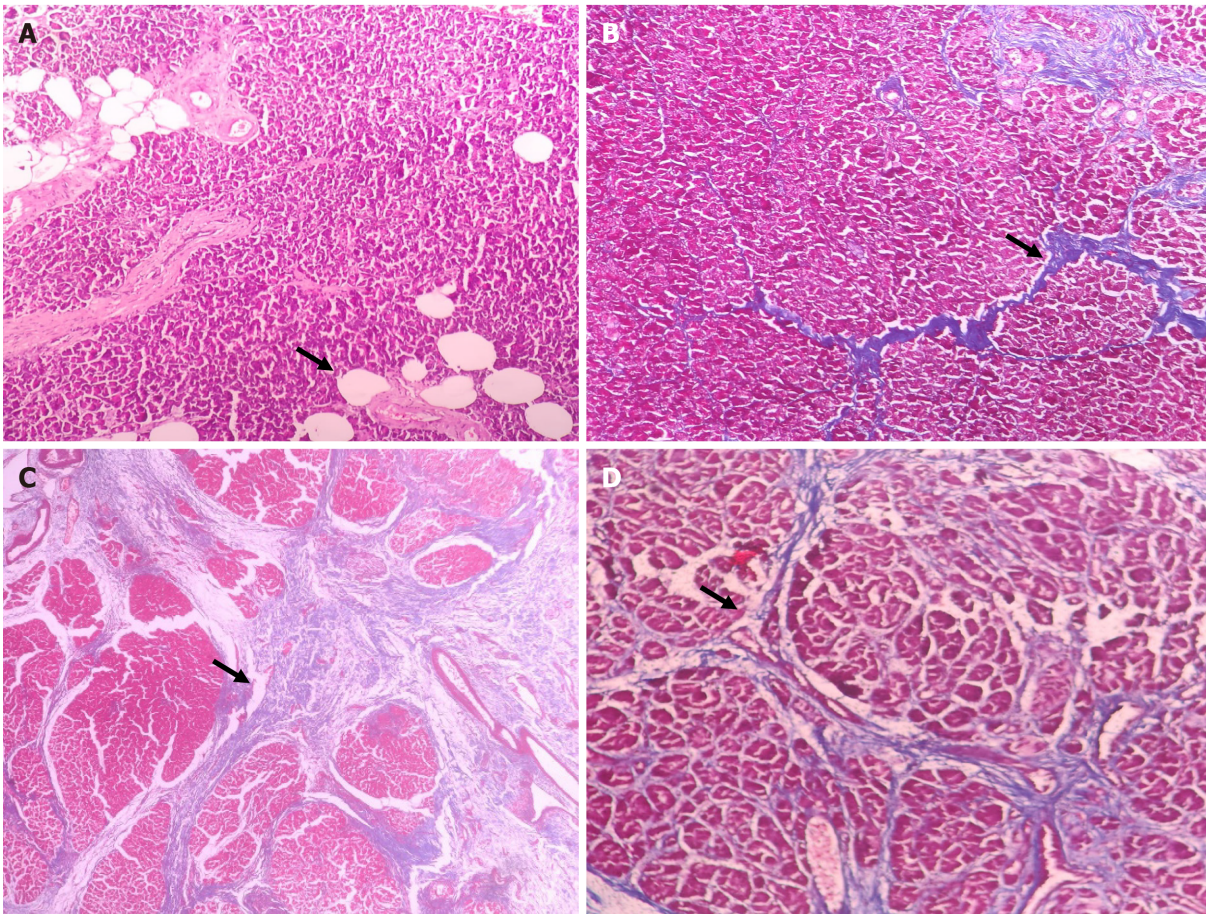
A pancreatic neck tissue specimen was sent for histopathological evaluation. The pathologist, blinded to CT data and pancreatic texture, performed histological analysis. The existence of Langerhans' islets confirmed the Pancreatic tissue. Only tissue free of inflammatory lesions and calcifications was evaluated. The histologic pancreatic fat fraction was defined as the area ratio of pancreatic intraparenchymal fat to that of the total tissue times 100% (< 5%-mildly fatty; 5-15%-moderately fatty, > 15%-heavily fatty) using hematoxylin and eosin stain[12]. The degree of fibrosis was studied using Masson's trichome stain. The extent of intralobular and interlobular fibrosis was separately measured, and the total score (0-6) was calculated (Figure 2). According to the total score, fibrosis was classified as weak (score 0-3) and heavy (score 4-6)[13].

Outcome measures

The primary objective of this prospective observational study was to determine the predictive accuracy of PAI and PER for CR-POPF following PD. The patients' demographic and clinical data, including age, sex, body mass index, bilirubin level, preoperative biliary drainage, comorbidities (diabetes mellitus and hypertension), weight loss and radiological indices (PAI and PER) were collected to determine the preoperative factors predictive of CR-POPF. Also, the operative outcomes, including operative time, estimated blood loss, need for blood transfusion, pancreatic texture and postoperative complications, were compared between patients with and without CR-POPF. Delayed gastric emptying [DGE], Post pancrectomy hemorrhage (PPH) and Postoperative pancreatic fistula [POPF] were graded as per the International Study Group for Pancreatic Surgery [ISGPS] definition[14-16]. To correlate preoperative CT indices (PAI and PER) with histopathological features, pancreatic neck fat fraction and fibrosis were measured in the pancreatic neck tissue specimen.

Statistical analysis

The statistical analysis was done using IBM SPSS Statistics for Windows, Version 28.0. (Armonk, NY,



DOI: 10.4329/wjrv.14.i6.165 Copyright © The Author(s) 2022.

Figure 2 Histopathological evaluation of pancreatic neck fat fraction and fibrosis. A: Photomicrograph showing moderate fat inclusion (hematoxylin and eosin [H&E], × 100); B: Photomicrograph showing heavy intralobular fibrosis (Masson's trichrome stain, H&E, × 100); C: Photomicrograph showing heavy interlobular fibrosis (Masson's trichrome stain, × 40); D: Photomicrograph showing weak intra and interlobular fibrosis (Masson's trichrome stain, × 200).

United States). The estimated sample size was calculated, anticipating an AUC of 0.75 for PER in predicting CR-POPF with 90% power and a 5% level of significance. The required sample size was calculated as 60. Both descriptive and inferential statistics were used to analyze the data. Baseline characteristics of the patients are presented by descriptive statistics. Categorical data (sex, clinical factors, presence or absence of DGE, CRPOPF, PPH, Intraabdominal abscess, pancreatic gland texture, pathological diagnosis) was described using percentages and frequencies and compared by using Fischer exact test or Chi-square test. The normality of continuous data was assessed by the Kolmogorov-Smirnov test. The normally distributed data were described by mean \pm standard deviation (SD). Median and interquartile range was used for non-Gaussian data. Comparison of the continuous data (age, duct size, serum bilirubin) between the two groups was done by independent Student's *t*-test for parametric data and Mann-Whitney U-test for nonparametric data. The ability of PAI and PER to predict CR-POPF was assessed using receiver operating characteristic (ROC) analysis. A perfect test will have an AUC equaling 1. A 95% confidence interval was calculated and reported for the outcome measures. Statistical analysis was carried out at a 5% significance level, and $P < 0.05$ was considered statistically significant. The Pearson correlation coefficient (*r*) was used to examine the association of the histologic pancreatic fibrosis score and fat fraction with PAI and PER independently. A perfect positive correlation will show a value of +1, and a value of -1 indicates a perfect negative correlation.

RESULTS

Of the 70 patients who underwent PD during the study period, 61 patients fulfilling the inclusion criteria were included in the analysis. Five patients did not achieve the required ROI (0.2-0.3 cm²), three patients who could not undergo histopathological analysis due to insufficient or other pathological changes in the sample and one patient who died during the immediate postoperative period were excluded from the analysis.

Preoperative predictive factors for CR-POPF

The overall incidence of CR-POPF in the study cohort was 29.5% (18/61). The demographic variables, history of weight loss, presence of comorbidities, preoperative hemoglobin, serum bilirubin and preoperative biliary drainage were comparable between groups with and without CR-POPF (Table 1). While PAI was similar between the two groups, the mean (\pm SD) PER was significantly lower in patients developing CR-POPF (0.58 ± 0.20 vs 0.81 ± 0.44 , $P = 0.006$). The ROC analysis was done to determine the accuracy of PAI and PER in predicting CR-POPF (Figure 3). The area under the curve for the PAI was 0.461 (95%CI: 0.304-0.617), which was not significant ($P = 0.630$). At the same time, the area under the curve for the PER was 0.661 (95%CI: 0.517-0.804), which was significant ($P = 0.049$). We can predict whether a randomly chosen case will develop CR-POPF with a probability of 66.1%. With a cut-off of $PER = 0.673$, PER can predict those with CR-POPF with 77.8% sensitivity and 55.8% specificity (Figure 3).

Correlation between radiological indices (PAI, PER) and histopathological findings

There was no significant correlation between PAI and fat fraction or fibrosis score (Table 2). Pearson correlation coefficient between PER and fibrosis score was moderately positive and statistically significant with a strength of 0.504 and a P value of < 0.001 . The positive correlation between PER and fibrosis score suggests that an increase in the intraparenchymal fibrosis results in the delayed pancreatic enhancement on CT, reflected as an increased PER. The correlation coefficient between PER and PAI was low negative and statistically significant, with a strength of -0.267 and a P -value of 0.037. The negative correlation between PER and PAI signifies that as the fibrosis increases, resulting in an increased delayed pancreatic enhancement, the fat fraction within the pancreas decreases, represented by a lower PAI.

Perioperative outcomes

The operative time, blood loss, intraoperative blood transfusion, surgical approach and pancreatic duct size was comparable between the two groups (Table 3). The proportion of patients with soft pancreas was significantly higher in the CR-POPF group. Postoperatively patients with CR-POPF had a significantly higher incidence of delayed gastric emptying (83.3% vs 30.2%, $P < 0.001$) and intra-abdominal abscess (50% vs 2.3%, $P < 0.001$). Also, Patients with CR-POPF had a prolonged postoperative hospital stay. There was no significant difference in the pancreatic fat fraction and fibrosis score between the two groups.

DISCUSSION

The present study documents the role of preoperative CT indices, especially PER, in predicting CR-POPF. Despite improved surgical techniques and perioperative management, PD remains a morbid procedure with a 30-50% estimated morbidity rate[1,2]. POPF is the critical cause of post-PD morbidity, and pancreatic texture has been reported as an important predictive parameter for POPF[17,18]. A soft pancreatic texture has been associated with an increased risk, while a firm pancreas protects against POPF. However, intraoperative assessment of gland consistency by the surgeon's digital palpation is highly subjective[18]. In recent years, laparoscopic and robotic approaches for PD have increased globally. Assessment of pancreatic texture during minimally invasive PD, especially the robotic approach, is challenging. Hence, parameters like acinar cell density and fibrosis score on histopathological examination were evaluated as objective criteria for pancreatic texture[19]. However, these parameters are not helpful for the preoperative prediction of POPF. Preoperative CR-POPF prediction using dependable parameters can assist in implementing intraoperative and postoperative measures to reduce CR-POPF-related morbidity. Hence, attempts have been made to correlate preoperative cross-sectional imaging (CECT and MRI) with pancreatic texture[7-11,20]. Most studies evaluating PAI and PER on the CECT abdomen were retrospective, which precludes assessment and correlation of pancreatic neck fat fraction and fibrosis[7-11].

PAI

The high fat fraction in the pancreas makes the pancreas softer, which might increase the risk of POPF following PD. Liver Attenuation Index is the widely used radiological index to measure liver fat fraction [21]. Similarly, Yardimci *et al*[22] proposed PAI as a simple tool to assess pancreatic fat fraction based on the study of 76 patients who underwent PD. The PAI cut-off value of 0.67 was valuable for risk calculation in their research. Other studies also reported the usefulness of PAI in assessing pancreatic fat fraction[7,8]. Although PAI was proposed as a simple tool that can be quickly evaluated, the lack of adequate external validation remains the primary impediment to its widespread adoption. In the present study, PAI was not useful for predicting CR-POPF. Also, PAI did not correlate with histological pancreatic fat fraction. On the other hand, PAI correlated negatively with PER, indicating an inverse relationship between pancreatic fat content with fibrosis and pancreatic texture. According to our analysis, PAI may not accurately reflect pancreas fat fraction and softness. However, the lack of predict-

Table 1 Comparison of demographic, clinical and preoperative radiological parameters between patients with and without clinically relevant postoperative pancreatic fistula

Parameter	CR-POPF, <i>n</i> = 18	No CR-POPF, <i>n</i> = 43	<i>P</i> value
Age in yr, mean \pm SD	53.7 \pm 10.8	54.7 \pm 11.5	0.746
Sex, <i>n</i> (%)			
Male	10 (55.6)	28 (65.1)	0.567
Female	8 (44.4)	15 (34.9)	
BMI in kg/m ² , mean \pm SD	21.1 \pm 4.4	20.1 \pm 3.9	0.388
Weight loss, <i>n</i> (%)	15 (83.3)	32 (74.4)	0.525
Comorbidities, <i>n</i> (%)	11 (61.1)	22 (51.2)	0.578
Hemoglobin in gm%, mean \pm SD	10.7 \pm 1.4	10.8 \pm 1.5	0.735
Preoperative serum bilirubin (mg/dL), median (IQR)	2 (1.8-6)	3 (1-7)	0.848
Preoperative biliary drainage, <i>n</i> (%)	10 (55.6)	22 (51.2)	0.786
Pancreatic attenuation index, mean \pm SD	0.8 \pm 0.2	0.8 \pm 0.2	0.741
Pancreatic enhancement ratio, mean \pm SD	0.6 \pm 0.2	0.8 \pm 0.4	0.006

CR-POPF: Clinically relevant postoperative pancreatic fistula; gm: Gram; IQR: Inter quartile range; SD: Standard deviation.

Table 2 Correlation between preoperative radiological indices and histopathological pancreatic neck fat fraction and fibrosis

	Pancreatic attenuation index	Pancreatic enhancement ratio	Pancreatic fat fraction	Fibrosis score
Pancreatic attenuation index	-	-0.27 ^a	0.21	-0.20
Pancreatic enhancement ratio	-0.27 ^a	-	-0.10	0.50 ^b
Pancreatic fat fraction	0.21	-0.10	-	-0.12
Fibrosis score	-0.20	0.50 ^b	-0.12	-

^aCorrelation is significant at the 0.05 level (2-tailed).

^bCorrelation is significant at the 0.01 level (2-tailed).

ability and correlation may be due to the small sample size and the underpowered study.

PER

An increase in the fibrosis of the pancreas makes the gland firmer, decreasing the incidence of POPF. It is technically straightforward to perform a pancreatoenteric anastomosis on a firmer gland. Maehira *et al* [9], in a retrospective analysis of 115 patients, reported that the pattern of pancreatic enhancement could be a reliable predictor for the development of CR-POPF. Also, Kang *et al* [11] documented that PER cut-off of 1.100 might be a valuable predictor for the risk of developing a CR-POPF following PD. In the present study, the PER cut-off value of 0.661 had a sensitivity of 78% and a specificity of 55% in predicting CR-POPF. Also, PER had a positive correlation with pancreatic fibrosis. The main drawback of using PER as a predictor for CR-POPF is that the perfusion of organs with injected contrast depends upon the patient's hemodynamic status, influencing the final indices values, unlike PAI, which is independent of contrast.

Correlation between the CT indices and Histopathological analysis

With pancreatic fibrosis known for the protection of CR-POPF and pancreatic fatty infiltration being a concern, it is prudent that radiological indices be correlated with histopathological findings to determine their predictive accuracy. While multiple studies have evaluated different CT parameters, a few have tried to link with histology. However, no previous studies have looked at both contrast and non-contrast indices and their relationship with pancreatic neck fat fraction and fibrosis. The present study results are similar to the study by Hashimoto *et al* [10], which reported a correlation between PER and pancreatic fibrosis. However, in contrast to the current study, bolus tracking was not used in their imaging protocol. Hence, the timing differences between the scan performance and arrival of injected contrast in the structures were not considered. Further, the iodine concentration of the contrast used

Table 3 Comparison of perioperative and pathological parameters between patients with and without clinically relevant postoperative pancreatic fistula

Parameter	CR-POPF, n = 18	No CR-POPF, n = 43	P value
Operative time in min, mean \pm SD	521.9 \pm 123	463.9 \pm 101.2	0.275
Blood loss in mL, median (IQR)	550 (350-725)	475 (350-800)	0.830
Intraoperative blood transfusion, n (%)	6 (33.3)	17 (39.5)	0.775
Pancreatic texture, n (%)			
Firm	1 (5.6)	20 (47.6)	0.002
Soft	17 (94.4)	22 (52.4)	
Pancreatic duct size in mm, mean \pm SD	2.8 \pm 1.1	3.4 \pm 1.6	0.169
Surgical approach, n (%)			
Open	9 (50)	24 (55.8)	0.927
Laparoscopic	6 (33.3)	12 (27.9)	
Robot assisted	3 (16.7)	7 (16.3)	
Delayed gastric emptying, n (%)	15 (83.3)	13 (30.2)	< 0.001
Postpancreatectomy hemorrhage, n (%)	3 (16.7)	4 (9.3)	0.662
Intra-abdominal abscess, n (%)	9 (50)	1 (2.3)	< 0.001
Hospital stay in d, mean \pm SD	26.8 \pm 13.9	9.6 \pm 6	0.001
Pathology, n (%)			
Malignant	17 (94.4)	35 (81.4)	0.259
Benign	1 (5.6)	8 (18.6)	
Fat fraction, n (%)			
Absent	6 (33.3)	20 (46.5)	0.669
Mild	9 (50.0)	17 (39.6)	
Moderate	3 (16.7)	6 (13.9)	
Fibrosis score, n (%)			
Weak	16 (88.9)	27 (62.8)	0.063
Heavy	2 (11.1)	16 (37.2)	

CR-POPF: Clinically relevant postoperative pancreatic fistula; IQR: Inter quartile range; SD: Standard deviation.

could affect the magnitude of enhancement. Kang *et al*[11] reported that the CT enhancement ratio was a more powerful predictor of pancreatic fistula than fecal elastase-1 Levels. However, in contrast to the current study, their study was a retrospective analysis, with no reference standards of the pathological fibrosis data to correlate with the CT enhancement ratios.

Our study did not show any correlation of PAI with pancreatic fat fraction. Kim *et al*[12] reported a significant correlation between the PAI and histopathological fat fraction. However, the clinical parameter that was assessed was post PD glycemic control, unlike CR-POPF in our study. Though the study was able to show a positive correlation, it was a retrospective study, with a small sample size and lack of clarity on whether the histological fat fraction corresponded with the area of ROI. Hori *et al*[23] have recently shown that area-based assessment on unenhanced CT showed higher correlation and concordance with histopathology-based fat fraction in the pancreas than the ROI-based CT attenuation assessment. A few studies have reported the usefulness of MRI for analyzing pancreatic fat content[20]. As MRI is not widely available and routinely used for preoperative workup of patients undergoing PD, its use as a predictor tool for CR-POPF has a limited application. The different CT attenuation and enhancement values reported in the present study could be due to the calculation of CT indices precisely at the pancreatic neck. In contrast, previous studies measured randomly across the pancreas.

Limitations

Our study is limited by a few factors that require attention. Firstly, the small sample size may not

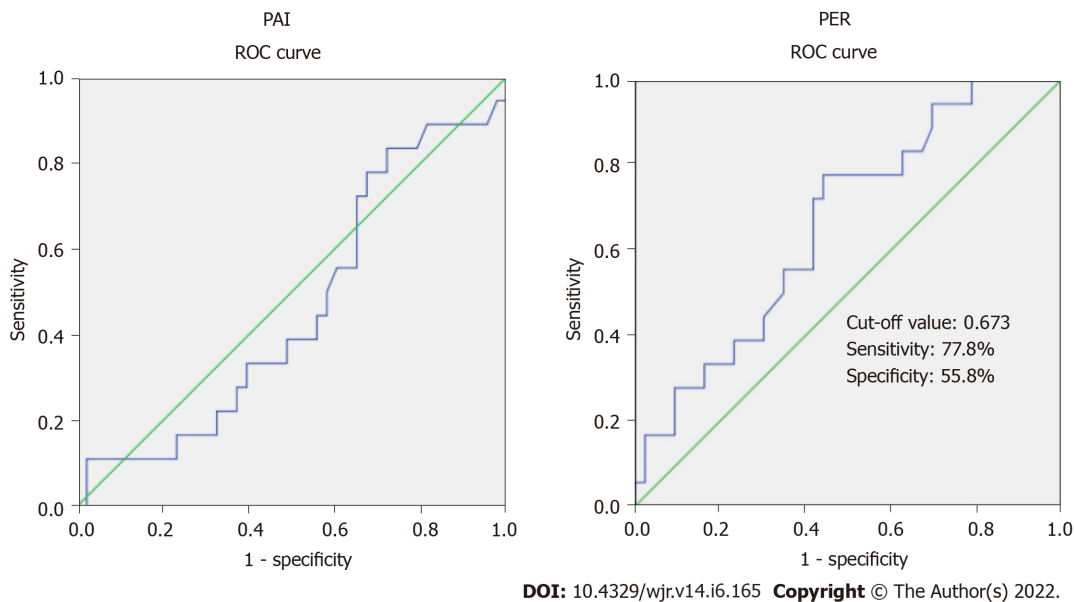


Figure 3 Receiver operating characteristic curve of the computed tomography indices for predicting clinically relevant postoperative fistula. The area under curve for the pancreatic attenuation index is 0.461 (95%CI: 0.304-0.617), which is not significant ($P = 0.630$). The area under curve for the pancreatic enhancement ratio is 0.661 (95%CI: 0.517-0.804), which is significant ($P = 0.049$). ROC: Receiver operating characteristic; PAI: Pancreatic attenuation index; PER: Pancreatic enhancement ratio.

represent the entire patient cohort. A future study with a larger sample size is needed to determine PAI's predictability accurately. The reliable prediction of CR-POPF preoperatively is challenging in patients undergoing PD as it is a mix of a heterogeneous population of patients subjected to different heterogeneous surgical approaches. In PD, with various reconstructive options available and each Institute and each surgeon adopting a technique of their own choice, creating a standardized operative technique is nearly impossible. A homogenous population of patients and standardized uniform surgical techniques are prerequisites for any preoperative prediction models to show good predictive ability, both of which are difficult to achieve in the case of PD. The patient characteristics, the surgeon's expertise and surgical techniques are vital in deciding the risk of a patient developing CR-POPF. With all these factors coming into play, it is expected that accurate preoperative prediction of CR-POPF is not always possible. Even if some studies show a single or group of parameters as predictors for CR-POPF, external validation might not offer the same result because of the factors mentioned above.

Nevertheless, identifying potential preoperative predictors for CR-POPF is a vital step in our journey to decrease the morbidity associated with PD. Our study failed to demonstrate any association of PAI with CR-POPF and postoperative fat fraction, which may be explained apart from the small sample size to the restrictive ROI. Area-based assessment for the pancreatic fat fraction in future studies may better correlate with histopathological fat fraction.

CONCLUSION

The PER showed good accuracy in predicting the development of CR-POPF and a PER ratio of 0.673 or below increased the likelihood of CR-POPF. The positive correlation of PER with fibrosis and negative correlation with PAI suggest that PER may be an objective surrogate for assessing pancreatic texture, especially in minimally invasive surgery, where pancreatic texture assessment could be challenging. ROI-based PAI has a poor prediction for CR-POPF and does not correlate with a pancreatic fat fraction or fibrosis scores. Preoperative quantification of PER can improve the risk stratification and management of patients at high risk of CR-POPF. A multi-center trial with a larger sample size is necessary to validate PAI and PER reliably.

ARTICLE HIGHLIGHTS

Research background

Postoperative pancreatic fistula is the critical cause of morbidity after pancreaticoduodenectomy. Identifying patients at risk of clinically relevant postoperative pancreatic fistula can potentially improve

clinical outcomes after pancreaticoduodenectomy.

Research motivation

Most of the available models to predict postoperative pancreatic fistula can be used only in the postoperative setting.

Research objectives

To calculate the accuracy of the pancreatic neck pancreatic attenuation index (PAI) and pancreatic enhancement ratio (PER) in predicting clinically relevant postoperative pancreatic fistula and its correlation with histological pancreatic neck fat fraction and fibrosis scoring.

Research methods

Patients who underwent pancreaticoduodenectomy for benign and malignant pathology of the periampullary region or pancreatic head between February 2019 and February 2021 were included in the prospective observational study. The PAI was measured in the neck of the pancreas by marking regions of interest in the preoperative non-contrast computed tomography (CT), and the PER was measured during the contrast phase of the CT abdomen. Preoperative pancreatic neck CT indices were correlated with histopathological evaluation of Fibrosis score and the fat fraction of the pancreatic neck and clinically relevant postoperative pancreatic fistula.

Research results

The PAI had no significant association with the development of clinically relevant postoperative pancreatic fistula (CR-POPF). However, PER was significantly lower in patients developing CR-POPF (0.58 ± 0.20 vs 0.81 ± 0.44 , $P = 0.006$). Also, PER cut-off of 0.673 predicts CR-POPF with 77.8% sensitivity and 55.8% specificity. The PER showed a moderately positive correlation with fibrosis (Strength 0.50, $P < 0.001$).

Research conclusions

PER showed good accuracy in predicting CR-POPF. Also, PER showed a good correlation with fibrosis scores and may be used as an objective preoperative surrogate for assessing pancreatic texture.

Research perspectives

Quantifying PER on preoperative computed tomography can improve the risk stratification and management of patients at high risk of clinically relevant postoperative pancreatic fistula. Failure to demonstrate an association of PAI with clinically relevant postoperative pancreatic fistula and postoperative fat fraction suggests that area-based assessment for the pancreatic fat fraction may be better than the region of interest-based estimation.

FOOTNOTES

Author contributions: Gnanasekaran S and Kalayarasan R conceptualized the study; Durgesh S and Gurram R performed the research work; Rajeswari M performed the data analysis; Srinivas BH reviewed the histopathological slides for postoperative analysis; Ramesh A performed a preoperative radiological assessment of study participants; Durgesh S and Gurram R wrote the first draft of the manuscript; Gnanasekaran S, Kalayarasan R, Pottakkat B and Sahoo J gave intellectual input and critically revised the manuscript.

Institutional review board statement: The study was reviewed and approved by the institutional ethics committee (Human studies) of Jawaharlal Institute of Postgraduate Medical Education and Research (JIPMER), Puducherry, India (JIP/IEC/2018/500 dated 25-01-2019). The study protocol can be fully accessed at <https://jipmer.edu.in/>.

Informed consent statement: All study participants, or their legal guardian, provided written consent prior to study enrolment.

Conflict-of-interest statement: All authors of this manuscript have no financial relationships to disclose.

Data sharing statement: No additional data are available.

CONSORT 2010 statement: The authors have read the CONSORT 2010 Statement, and the manuscript was prepared and revised according to the CONSORT 2010 Statement.

Open-Access: This article is an open-access article that was selected by an in-house editor and fully peer-reviewed by external reviewers. It is distributed in accordance with the Creative Commons Attribution NonCommercial (CC BY-NC 4.0) license, which permits others to distribute, remix, adapt, build upon this work non-commercially, and license their derivative works on different terms, provided the original work is properly cited and the use is non-

commercial. See: <https://creativecommons.org/licenses/by-nc/4.0/>

Country/Territory of origin: India

ORCID number: Senthil Gnanasekaran 0000-0002-8639-5423; Satish Durgesh 0000-0001-8601-1576; Ramprakash Gurram 0000-0001-7106-2178; Raja Kalayarasan 0000-0003-4056-8672; Biju Pottakkat 0000-0002-8474-0270; M Rajeswari 0000-0003-1620-7359; BH Srinivas 0000-0002-9619-6719; A Ramesh 0000-0002-1404-6400; Jayaprakash Sahoo 0000-0002-8805-143X.

Corresponding Author's Membership in Professional Societies: Indian chapter of International Hepatopancreatobiliary Association, 563; Indian Association of Surgical Gastroenterology, K-65; International Hepatopancreatobiliary association, M02056.

S-Editor: Wang LL

L-Editor: Filipodia

P-Editor: Wang LL

REFERENCES

- 1 **Greenblatt DY**, Kelly KJ, Rajamanickam V, Wan Y, Hanson T, Rettammel R, Winslow ER, Cho CS, Weber SM. Preoperative factors predict perioperative morbidity and mortality after pancreaticoduodenectomy. *Ann Surg Oncol* 2011; **18**: 2126-2135 [PMID: 21336514 DOI: 10.1245/s10434-011-1594-6]
- 2 **Tzeng CW**, Katz MH, Fleming JB, Lee JE, Pisters PW, Holmes HM, Varadhachary GR, Wolff RA, Abbruzzese JL, Vauthey JN, Aloia TA. Morbidity and mortality after pancreaticoduodenectomy in patients with borderline resectable type C clinical classification. *J Gastrointest Surg* 2014; **18**: 146-55; discussion 155 [PMID: 24129825 DOI: 10.1007/s11605-013-2371-6]
- 3 **Berger AC**, Howard TJ, Kennedy EP, Sauter PK, Bower-Cherry M, Dutkevitch S, Hyslop T, Schmidt CM, Rosato EL, Lavu H, Nakeeb A, Pitt HA, Lillemoe KD, Yeo CJ. Does type of pancreaticojejunostomy after pancreaticoduodenectomy decrease rate of pancreatic fistula? *J Am Coll Surg* 2009; **208**: 738-47; discussion 747 [PMID: 19476827 DOI: 10.1016/j.jamcollsurg.2008.12.031]
- 4 **Callery MP**, Pratt WB, Kent TS, Chaikof EL, Vollmer CM Jr. A prospectively validated clinical risk score accurately predicts pancreatic fistula after pancreatoduodenectomy. *J Am Coll Surg* 2013; **216**: 1-14 [PMID: 23122535 DOI: 10.1016/j.jamcollsurg.2012.09.002]
- 5 **Kantor O**, Talamonti MS, Pitt HA, Vollmer CM, Riall TS, Hall BL, Wang CH, Baker MS. Using the NSQIP Pancreatic Demonstration Project to Derive a Modified Fistula Risk Score for Preoperative Risk Stratification in Patients Undergoing Pancreaticoduodenectomy. *J Am Coll Surg* 2017; **224**: 816-825 [PMID: 28408176 DOI: 10.1016/j.jamcollsurg.2017.01.054]
- 6 **Liu Y**, Li Y, Wang L, Peng CJ. Predictive value of drain pancreatic amylase concentration for postoperative pancreatic fistula on postoperative day 1 after pancreatic resection: An updated meta-analysis. *Medicine (Baltimore)* 2018; **97**: e12487 [PMID: 30235751 DOI: 10.1097/MD.00000000000012487]
- 7 **Tranchart H**, Gaujoux S, Rebours V, Vullierme MP, Dokmak S, Levy P, Couvelard A, Belghiti J, Sauvanet A. Preoperative CT scan helps to predict the occurrence of severe pancreatic fistula after pancreaticoduodenectomy. *Ann Surg* 2012; **256**: 139-145 [PMID: 22609844 DOI: 10.1097/SLA.0b013e318256c32e]
- 8 **Lim S**, Bae JH, Chun EJ, Kim H, Kim SY, Kim KM, Choi SH, Park KS, Florez JC, Jang HC. Differences in pancreatic volume, fat content, and fat density measured by multidetector-row computed tomography according to the duration of diabetes. *Acta Diabetol* 2014; **51**: 739-748 [PMID: 24671510 DOI: 10.1007/s00592-014-0581-3]
- 9 **Maehira H**, Iida H, Mori H, Kitamura N, Miyake T, Shimizu T, Tani M. Computed Tomography Enhancement Pattern of the Pancreatic Parenchyma Predicts Postoperative Pancreatic Fistula After Pancreaticoduodenectomy. *Pancreas* 2019; **48**: 209-215 [PMID: 30589830 DOI: 10.1097/MPA.0000000000001229]
- 10 **Hashimoto Y**, Sclabas GM, Takahashi N, Kiriha Y, Smyrk TC, Huebner M, Farnell MB. Dual-phase computed tomography for assessment of pancreatic fibrosis and anastomotic failure risk following pancreatoduodenectomy. *J Gastrointest Surg* 2011; **15**: 2193-2204 [PMID: 21948179 DOI: 10.1007/s11605-011-1687-3]
- 11 **Kang JH**, Park JS, Yu JS, Chung JJ, Kim JH, Cho ES, Yoon DS. Prediction of pancreatic fistula after pancreatoduodenectomy by preoperative dynamic CT and fecal elastase-1 Levels. *PLoS One* 2017; **12**: e0177052 [PMID: 28493949 DOI: 10.1371/journal.pone.0177052]
- 12 **Kim SY**, Kim H, Cho JY, Lim S, Cha K, Lee KH, Kim YH, Kim JH, Yoon YS, Han HS, Kang HS. Quantitative assessment of pancreatic fat by using unenhanced CT: pathologic correlation and clinical implications. *Radiology* 2014; **271**: 104-112 [PMID: 24475851 DOI: 10.1148/radiol.13122883]
- 13 **Klöppel G**, Maillet B. Pseudocysts in chronic pancreatitis: a morphological analysis of 57 resection specimens and 9 autopsy pancreata. *Pancreas* 1991; **6**: 266-274 [PMID: 1862065]
- 14 **Bassi C**, Marchegiani G, Dervenis C, Sarr M, Abu Hilal M, Adham M, Allen P, Andersson R, Asbun HJ, Besselink MG, Conlon K, Del Chiaro M, Falconi M, Fernandez-Cruz L, Fernandez-Del Castillo C, Fingerhut A, Friess H, Gouma DJ, Hackert T, Izbicki J, Lillemoe KD, Neoptolemos JP, Olah A, Schulick R, Shrikhande SV, Takada T, Takaori K, Traverso W, Vollmer CR, Wolfgang CL, Yeo CJ, Salvia R, Buchler M; International Study Group on Pancreatic Surgery (ISGPS). The 2016 update of the International Study Group (ISGPS) definition and grading of postoperative pancreatic fistula: 11 Years After. *Surgery* 2017; **161**: 584-591 [PMID: 28040257 DOI: 10.1016/j.surg.2016.11.014]
- 15 **Wente MN**, Bassi C, Dervenis C, Fingerhut A, Gouma DJ, Izbicki JR, Neoptolemos JP, Padbury RT, Sarr MG, Traverso

- LW, Yeo CJ, Büchler MW. Delayed gastric emptying (DGE) after pancreatic surgery: a suggested definition by the International Study Group of Pancreatic Surgery (ISGPS). *Surgery* 2007; **142**: 761-768 [PMID: [17981197](#) DOI: [10.1016/j.surg.2007.05.005](#)]
- 16 **Wente MN**, Veit JA, Bassi C, Dervenis C, Fingerhut A, Gouma DJ, Izbicki JR, Neoptolemos JP, Padbury RT, Sarr MG, Yeo CJ, Büchler MW. Postpancreatectomy hemorrhage (PPH): an International Study Group of Pancreatic Surgery (ISGPS) definition. *Surgery* 2007; **142**: 20-25 [PMID: [17629996](#) DOI: [10.1016/j.surg.2007.02.001](#)]
- 17 **Lin JW**, Cameron JL, Yeo CJ, Riall TS, Lillemoe KD. Risk factors and outcomes in postpancreaticoduodenectomy pancreaticocutaneous fistula. *J Gastrointest Surg* 2004; **8**: 951-959 [PMID: [15585382](#) DOI: [10.1016/j.gassur.2004.09.044](#)]
- 18 **Hu BY**, Wan T, Zhang WZ, Dong JH. Risk factors for postoperative pancreatic fistula: Analysis of 539 successive cases of pancreaticoduodenectomy. *World J Gastroenterol* 2016; **22**: 7797-7805 [PMID: [27678363](#) DOI: [10.3748/wjg.v22.i34.7797](#)]
- 19 **Laaninen M**, Bläuer M, Vasama K, Jin H, Rätty S, Sand J, Nordback I, Laukkarinen J. The risk for immediate postoperative complications after pancreaticoduodenectomy is increased by high frequency of acinar cells and decreased by prevalent fibrosis of the cut edge of pancreas. *Pancreas* 2012; **41**: 957-961 [PMID: [22699198](#) DOI: [10.1097/MPA.0b013e3182480b81](#)]
- 20 **Kim Z**, Kim MJ, Kim JH, Jin SY, Kim YB, Seo D, Choi D, Hur KY, Kim JJ, Lee MH, Moon C. Prediction of post-operative pancreatic fistula in pancreaticoduodenectomy patients using pre-operative MRI: a pilot study. *HPB (Oxford)* 2009; **11**: 215-221 [PMID: [19590650](#) DOI: [10.1111/j.1477-2574.2009.00011.x](#)]
- 21 **Adali G**, Bozkurt B, Ceyhan Ö, Server S, Doğusoy GB, Yüzer Y, Tokat Y. Body Mass Index and Unenhanced CT as a Predictor of Hepatic Steatosis in Potential Liver Donors. *Transplant Proc* 2019; **51**: 2373-2378 [PMID: [31402250](#) DOI: [10.1016/j.transproceed.2019.02.047](#)]
- 22 **Yardimci S**, Kara YB, Tuney D, Attaallah W, Ugurlu MU, Dulundu E, Yegen ŞC. A Simple Method to Evaluate Whether Pancreas Texture Can Be Used to Predict Pancreatic Fistula Risk After Pancreatoduodenectomy. *J Gastrointest Surg* 2015; **19**: 1625-1631 [PMID: [25982120](#) DOI: [10.1007/s11605-015-2855-7](#)]
- 23 **Hori M**, Onaya H, Hiraoka N, Yamaji T, Kobayashi H, Takahashi M, Mutoh M, Shimada K, Nakagama H. Evaluation of the degree of pancreatic fatty infiltration by area-based assessment of CT images: comparison with histopathology-based and CT attenuation index-based assessments. *Jpn J Radiol* 2016; **34**: 667-676 [PMID: [27581428](#) DOI: [10.1007/s11604-016-0572-0](#)]



Published by **Baishideng Publishing Group Inc**
7041 Koll Center Parkway, Suite 160, Pleasanton, CA 94566, USA

Telephone: +1-925-3991568

E-mail: bpgoffice@wjgnet.com

Help Desk: <https://www.f6publishing.com/helpdesk>

<https://www.wjgnet.com>

