

Research Article

A Nomogram Based on Apelin-12 for the Prediction of Major Adverse Cardiovascular Events after Percutaneous Coronary Intervention among Patients with ST-Segment Elevation Myocardial Infarction

Enfa Zhao , Hang Xie, and Yushun Zhang 

Department of Structural Heart Disease, The First Affiliated Hospital of Xi'an Jiaotong University, Xi'an 710061, China

Correspondence should be addressed to Yushun Zhang; zys2889@mail.xjtu.edu.cn

Received 15 July 2019; Revised 3 January 2020; Accepted 14 January 2020; Published 6 February 2020

Academic Editor: Brian Tomlinson

Copyright © 2020 Enfa Zhao et al. This is an open access article distributed under the Creative Commons Attribution License, which permits unrestricted use, distribution, and reproduction in any medium, provided the original work is properly cited.

Objective. This study aimed to establish a clinical prognostic nomogram for predicting major adverse cardiovascular events (MACEs) after primary percutaneous coronary intervention (PCI) among patients with ST-segment elevation myocardial infarction (STEMI). **Methods.** Information on 464 patients with STEMI who performed PCI procedures was included. After removing patients with incomplete clinical information, a total of 460 patients followed for 2.5 years were randomly divided into evaluation ($n = 324$) and validation ($n = 136$) cohorts. A multivariate Cox proportional hazards regression model was used to identify the significant factors associated with MACEs in the evaluation cohort, and then they were incorporated into the nomogram. The performance of the nomogram was evaluated by the discrimination, calibration, and clinical usefulness. **Results.** Apelin-12 change rate, apelin-12 level, age, pathological Q wave, myocardial infarction history, anterior wall myocardial infarction, Killip's classification $> I$, uric acid, total cholesterol, cTnI, and the left atrial diameter were independently associated with MACEs (all $P < 0.05$). After incorporating these 11 factors, the nomogram achieved good concordance indexes of 0.758 (95% CI = 0.707–0.809) and 0.763 (95% CI = 0.689–0.837) in predicting MACEs in the evaluation and validation cohorts, respectively, and had well-fitted calibration curves. The decision curve analysis (DCA) revealed that the nomogram was clinically useful. **Conclusions.** We established and validated a novel nomogram that can provide individual prediction of MACEs for patients with STEMI after PCI procedures in a Chinese population. This practical prognostic nomogram may help clinicians in decision making and enable a more accurate risk assessment.

1. Introduction

Cardiovascular disease (CVD) is the main cause of death and disease burden in China and throughout the world, despite the technological advancement and the increasing level of awareness [1, 2]. Percutaneous coronary intervention (PCI) provides normal blood flow in the responsible artery in patients with STEMI, contributing remarkably to the regression of symptoms and better prognosis [3]. The preferred reperfusion therapy for STEMI is primary PCI [4]. It was reported that STEMI following successful PCI is the primary cause of mortality and morbidity worldwide in MACEs as a consequence of acute heart failure, mechanical

complications, and cardiac shock after procedure [5]. It was revealed that many clinical, biochemical, and echocardiographic factors influenced the prognosis of STEMI following PCI [6]. Several tools for cardiovascular disease risk and prognosis evaluation in different populations have been established to guide clinical practice. The widely used tools included the Framingham general CVD equations in the United States, the QRISK in the United Kingdom, the Systematic Coronary Risk Evaluation model in Europe, and the Pooled Cohort Equations for atherosclerotic CVD (ASCVD) released in the American Heart Association guideline, as well as Thrombolysis in Myocardial Infarction (TIMI) risk score, TIMI risk index, Evaluation of Methods

and Management of Acute Coronary Events (EMMACE), Global Registry of Acute Coronary Events (GRACE), Primary Angioplasty in Myocardial Infarction (PAMI), and Canada Acute Coronary Syndrome (C-ACS) Risk Score [7–16]. However, these equations presented above were all derived from Western populations, which limited their application to other populations. It is known that various lifestyle factors, an aging population, and longer life spans among different populations have led to distinct CVD outcome during the past decade [8, 17, 18].

In recent years, numerous novel markers of cardiovascular disease have been used in clinical practice. Novel and reliable biomarkers are urgently needed to incorporate within clinical model to help clinicians to both identify patients at high risk for adverse clinical prognosis and provide them with proper prevention program by more accurate prognosis estimation. Apelin, a 77-amino acid peptide secreted by white adipose tissue, functions as the endogenous ligand for the human orphan G protein-coupled receptor (APJ) [19]. It was revealed that the apelin-APJ system plays an essential role in the cardiovascular system, heart development, and was related inversely to the process of arterial atherosclerosis [20–23]. Apelin-12, one of the most potent apelin peptides, is involved in the regulation of body fluid homeostasis and has a positive inotropic action in failing myocardium [24, 25]. A clinical study indicated that the plasma apelin-12 concentration is decreased early after acute myocardial infarction (AMI) and remains remarkably below baseline at 24 weeks [26]. It was suggested that the apelin-APJ system may be a promising tool in the diagnosis and treatment of CVD. However, the present models seldom incorporated the apelin-12 into prediction equations. Therefore, the objective of this study was to develop and validate a clinical nomogram after incorporating the apelin-12 for prediction of MACEs in patients with STEMI after primary PCI using publicly data repository.

2. Materials and Methods

2.1. Data Sources and Study Population. The Dryad Digital Repository (<https://datadryad.org/>) is a curated resource that allows the data underlying scientific publications to be discoverable, citable, and freely reusable to create knowledge. Clinical information of 464 patients with STEMI who performed PCI procedures was downloaded from Dryad data repository (<https://doi.org/10.5061/dryad.pf56m>). The original study was published previously to explore factors predicting the probability of MACEs after primary PCI in patients with STEMI [6]. After screening the original data, a total of 32 variables were selected for further analysis. Four patients with incomplete clinical information were excluded from this study, and 460 remained. Patients followed up for 2.5 years were randomly divided into evaluation ($n = 324$) and validation ($n = 136$) cohorts based on a computer-generated allocation sequence. Since the application of data complied with the Dryad publication guidelines, the approval of institutional ethics committees was not required in this study.

2.2. Clinical Outcomes Definitions. A MACE is defined as the end point of this study, which referred to the composite of cardiac death, clinically driven target lesion revascularisation, recurrent target vessel myocardial infarction, cardiogenic shock, or demonstrated congestive heart failure. The apelin change rate was defined as the level of apelin-12 at 72 hours after PCI compared with that immediately before PCI. The other clinical outcomes were defined in a previous study [6]. All patients had a clinical follow-up for a 30-month period after operation.

2.3. Identification of Candidate Clinicopathological Variables and Nomogram Development. A total of 32 potential variables were included in this study. The associations of these variables with MACEs were identified using Cox proportional hazards regression models. Backward stepwise selection with the Akaike information criterion (AIC) was used to select variables for the multivariable Cox proportional hazards regression models [27]. Results are reported as hazard ratios (HRs) and 95% CIs. Clinicopathological variables with the P -value of ≤ 0.05 were included in the model. The identified variables based on the results of multivariate analysis were incorporated in the nomogram to predict the risk of 1-year and 2-year MACEs after PCI using statistical software (rms in R, version 3.5.1; <http://www.r-project.org>). The fitted nomogram used the covariates as input and generated a risk score for each patient.

2.4. Assessment and Validation of the Nomogram. The discrimination and calibration power are two important aspects of the performance of the established nomograms, and they were evaluated by using the concordance index (C-index) and calibration curves, both in evaluation and validation cohorts, respectively. The calibration of the nomogram was assessed by comparing the nomogram-predicted MACEs probability with the observed Kaplan-Meier estimates of MACEs probability. In a perfectly calibrated curve, the predictions should fall on the diagonal 45° line of the calibration plot. Calibration estimates how close the nomogram estimated probability is to the observed probability. A risk score for each patient was generated from the nomogram, which was calculated as a linear combination of the selected variables that were weighted by their respective regression coefficients of the multivariate Cox proportional hazards regression analysis conducted in the evaluation cohort to reflect the probability of MACEs. All patients were divided into two groups (a high-risk group and a low-risk group) according to the median risk score. Patients were further stratified into two subgroups according to the median value of apelin-12 level on admission. The Kaplan-Meier method was used to compare the difference in prognosis between the high- and low-risk groups using the evaluation and validation cohorts.

2.5. Clinical Usefulness of the Nomogram. The clinical usefulness of the nomogram was estimated using the decision curve analysis (DCA) by quantifying the net benefits for a

range of threshold probabilities using the combined evaluation and validation cohorts [28]. The net benefit was calculated by subtracting the ratio of all patients who are false positive from the fraction of the individuals who are true positive and by weighing the relative harm of forgoing interventions compared with the negative results of an unnecessary intervention.

3. Results

3.1. Clinicopathologic Characteristics. The basic characteristics of the patients in the evaluation and validation cohorts are summarized in Table 1. There are no significant differences between the two cohorts in MACEs prevalence ($P = 0.3634$). MACEs were presented in 26.85% and 22.79% in the evaluation and validation cohorts, respectively. The baseline clinicopathologic characteristics were similar between the two cohorts, except for Killip's classification $> I$ ($P = 0.0018$).

3.2. Nomogram Building. According to the multivariate Cox proportional hazards regression analysis, 11 candidate clinical variables were found to meet the threshold of $P < 0.05$. The multivariate logistic regression analysis showed that apelin-12 change rate (HR = 0.970, 95% CI = 0.943–0.999, $P = 0.042$), apelin-12 level (HR = 0.105, 95% CI = 0.041–0.268, $P < 0.001$), age (HR = 1.042, 95% CI = 1.018–1.066, $P < 0.001$), pathological Q wave (HR = 0.521, 95% CI = 0.324–0.836, $P = 0.007$), myocardial infarction history (HR = 0.406, 95% CI = 0.207–0.797, $P = 0.009$), anterior wall myocardial infarction (HR = 0.477, 95% CI = 0.271–0.841, $P = 0.010$), Killip's classification $> I$ (HR = 1.921, 95% CI = 1.154–3.198, $P = 0.012$), uric acid (HR = 0.996, 95% CI = 0.992–0.999, $P = 0.009$), total cholesterol (HR = 1.465, 95% CI = 1.139–1.885, $P = 0.003$), cTnI (HR = 1.025, 95% CI = 1.005–1.045, $P = 0.015$), and the left atrial diameter (HR = 1.072, 95% CI = 1.022–1.123, $P = 0.004$) were independently associated with MACEs (Figure 1). The predictive nomogram that integrated all the significant independent predictors for the MACEs rate was then developed in the evaluation cohort (Figure 2). The formula for calculating the total point of the nomogram is as follows: $1.0304 * (\text{apelin change rate}) + 9.5522 * (\text{apelin}) + 0.9600 * (\text{age}) + 1.9201 * I (\text{pathological Q wave}) + 2.4603 * I (\text{myocardial infarction history}) + 2.0949 * I (\text{anterior wall myocardial infarction}) + 0.5206 * I (\text{Killip's classification } > I) + 1.0043 * (\text{uric acid}) + 0.6826 * (\text{total cholesterol}) + 0.9756 * (\text{cTnI}) + 0.9332 * (\text{left atrial diameter})$. The indicator function (I) equals 1 if the statement in the parentheses is true and is equal to 0 otherwise.

3.3. Assessment of the Nomogram Performance. The nomogram yielded a C-index of 0.758 (95% CI = 0.707 to 0.809) using the evaluation cohort. A widely accepted approach demonstrates that a C-index of more than 0.75 reveals clearly useful discrimination [29, 30]. Therefore, the established nomogram presented satisfactory discrimination in the evaluation cohort. The calibration curves for the MACEs probability at 1 and 2 years after PCI showed

favorable agreement between the nomogram-based prediction and actual observation, demonstrating good calibration of the nomogram (Figures 3(a)–3(b)).

3.4. Validation of the Nomogram in the Validation Cohort. The fitted nomogram used the covariates as input and generated a risk score for each patient in both cohorts. The formula for calculating the risk score is as follows: $0.4215 * (\text{apelin}) - 0.3589 * (\text{apelin change rate}) + 0.4587 * (\text{age}) - 0.7173 * I (\text{pathological Q wave}) - 0.6211 * I (\text{myocardial infarction history}) - 0.6143 * I (\text{anterior wall myocardial infarction}) + 0.5037 * I (\text{Killip's classification } > I) - 0.3868 * (\text{uric acid}) + 0.4065 * (\text{total cholesterol}) + 1.2534 * (\text{cTnI}) + 0.7149 * (\text{left atrial diameter})$. The indicator function (I) equals 1 if the statement in the parentheses is true and is equal to 0 otherwise. The favorable calibration of the nomogram was confirmed in the validation cohort (Figures 3(c)–3(d)). Furthermore, the nomogram also exhibited good discrimination with a C-index of 0.763 (95% CI, 0.689–0.837) in the validation cohort. As a result, the nomogram performed well using both the evaluation and validation cohorts. We further compare the performance of the developed risk score if apelin levels (apelin and Δ apelin) are not incorporated in the calculation. The nomogram without including apelin levels (apelin and apelin change rate) yielded a C-index of 0.722 (95% CI = 0.671 to 0.772), which was inferior to that obtained from the C-index of 0.758 (95% CI = 0.707 to 0.809) in the evaluation cohort and the C-index of 0.763 (95% CI, 0.689–0.837) in the validation cohort in the present nomogram. This revealed that apelin levels improve the predictive power of the risk score.

3.5. Survival Analysis between High- and Low-Risk Groups. After gaining the risk scores from the nomogram, the patients were classified into a low-risk group or a high-risk group using the median risk score as the cutoff value. Kaplan-Meier curves and log-rank test analysis in patients of the low-risk group and high-risk group during 2.5-year follow-up are shown in Figure 4. As revealed in Figure 4(a), clear discrimination between the MACEs of the high- and low-risk patients was observed in the evaluation cohort, which was confirmed in the validation cohort (Figure 4(b)). Based on the median value of apelin-12 on admission, patients were classified into a higher group (>0.76 ng/mL) and a lower group (≤ 0.76 ng/mL). Significant differences in survival curves were noted between patients with different apelin-12 ($P = 0.0103$, Figure 4(c)). However, such differences were not observed in the validation cohort (Figure 4(d)), which may be due to the relatively small sample size. Therefore, our nomogram can successfully distinguish patients with high risk of MACEs after PCI from those with low risk.

3.6. Clinical Usefulness of the Nomogram and Comparing the Performance of the Newly Developed Risk Score with the Already Available Risk Scores. The decision curve analysis is a novel method that evaluates predictive models from the perspective of clinical consequences. The threshold probability is where the expected benefit of treatment balances the

TABLE 1: Participant characteristics in evaluation and validation cohorts.

Variables	Evaluation cohort ($n = 324$)	Validation cohort ($n = 136$)	P-value
Age (years)	62.60 \pm 12.00	63.73 \pm 11.70	0.3537
Male, n (%)	250 (77.16%)	103 (75.74%)	0.7425
Killip's classification > I, n (%)	92 (28.40%)	20 (14.71%)	0.0018
Diabetes mellitus, n (%)	99 (30.56%)	49 (36.03%)	0.2523
Hypertension, n (%)	195 (60.19%)	69 (50.74%)	0.0617
Myocardial infarction history, n (%)	37 (11.42%)	18 (13.24%)	0.5834
Anterior wall myocardial infarction, n (%)	160 (49.38%)	69 (50.74%)	0.7903
Apelin-12 (ng/mL)	0.82 \pm 0.33	0.84 \pm 0.35	0.5605
Apelin-12 change rate (%)	13.74 \pm 8.98	12.94 \pm 8.63	0.3783
SBP(mmHg)	131.34 \pm 27.20	133.13 \pm 27.10	0.5194
Albumin (g/L)	37.95 \pm 3.92	37.87 \pm 3.64	0.8385
Haemoglobin (g/L)	143.46 \pm 17.39	144.65 \pm 16.79	0.499
Total cholesterol (mmol/L)	5.67 \pm 1.11	5.65 \pm 1.06	0.8583
Triglyceride (mmol/L)	1.09 \pm 0.85	1.16 \pm 0.82	0.4159
High-density lipoprotein-C (mmol/L)	1.19 \pm 0.27	1.24 \pm 0.26	0.0676
Low-density lipoprotein-C (mmol/L)	3.06 \pm 0.71	3.00 \pm 0.76	0.4184
Fasting blood glucose (mmol/L)	7.63 \pm 2.52	7.76 \pm 2.57	0.6159
White blood cells $\times 10^9/L$	9.95 \pm 3.72	10.40 \pm 3.44	0.2269
Heart rate	77.54 \pm 16.97	75.42 \pm 17.56	0.2268
Neutrophil (%)	75.2 \pm 11.71	76.89 \pm 11.03	0.1515
Creatinine (mmol/L)	75.40 \pm 25.20	72.91 \pm 15.58	0.2855
Uric acid (mmol/L)	339.19 \pm 75.20	332.5 \pm 70.63	0.376
Platelet $\times 10^9/L$	232.59 \pm 56.05	231.14 \pm 57.02	0.8012
Blood urea nitrogen (mmol/L)	6.66 \pm 2.05	6.89 \pm 2.12	0.2776
Peak creatine kinase MB (U/L)	126.83 \pm 91.26	130.85 \pm 85.75	0.661
Peak cTnI (ng/mL)	16.66 \pm 12.87	16.47 \pm 12.86	0.8852
Pathological Q wave, n (%)	154 (47.53%)	67 (49.26%)	0.735
GENSINI score	72.92 \pm 32.17	70.18 \pm 32.18	0.405
Left atrial diameter (mm)	37.53 \pm 5.59	37.17 \pm 5.90	0.5356
Left ventricular diastolic diameter (mm)	50.36 \pm 6.24	50.51 \pm 6.36	0.8151

expected benefit of avoiding treatment. When the threshold probability ranged from 0.01 to 0.86 in the combined evaluation and validation cohorts, using the apelin-12 based nomogram to predict MACEs yields a greater net benefit than the treat-all or treat-none strategies. For example, if the possibility of MACEs in a patient is over the threshold probability, then a treatment strategy should be adopted. Therefore, the decision curve analysis indicated that the nomogram is clinically useful. Moreover, the newly developed nomogram in this study also displayed more powerful efficiency of the discrimination for MACEs prediction in the whole cohort compared with the other available risk scores systems (Figure 5).

In addition, we compared the discrimination of the nomogram with that of other already available risk scores to predict MACEs in the evaluation and validation data sets. The apelin-12 based nomogram discrimination for MACEs prediction was superior to that of the other already available risk scores in the evaluation cohort. The discrimination of the nomogram for MACEs prediction was also enhanced compared with the available risk scores in the validation cohort (Table 2).

4. Discussion

Apelin is the endogenous ligand of APJ, which is commonly expressed in several organs and tissues, such as the heart, kidney, lung, and adipose tissue [31]. Apelin and APJ

receptor play a vital role in the cardiovascular development and may also be involved in the cardiovascular pathological processes [32–34]. A recent study found that apelin had biological functions such as peripheral and coronary vasodilation [35]. It was shown that intravenous apelin administration in rodents decreases systemic venous tone and mean arterial pressure [36, 37]. In patients with stable angina, plasma apelin was found to be negatively correlated with the coronary artery stenosis severity independent of other cardiovascular risk factors [38]. The clinical prognosis in patients with STEMI after PCI is closely associated with the apelin-12 concentration on admission [6]. All of the above studies indicated that apelin may play an important role in cardiovascular diseases. However, as far as we know, at present there is no clinical prediction model which incorporated apelin-12 to predict MACEs in patients with STEMI after PCI. Therefore, a well-performed risk prediction tool incorporating apelin-12 is greatly needed.

It was known that nomograms are commonly used as a prognostic tool in oncology and medicine. They provided individual predictions of future clinical outcomes by combining the effects of various variables associated with these events. As far as we know, this is the first clinical prediction model incorporating apelin-12 for predicting MACEs in patients with STEMI after PCI in a Chinese population. In this study, we have constructed and validated a relatively accurate clinical nomogram, which demonstrated adequate

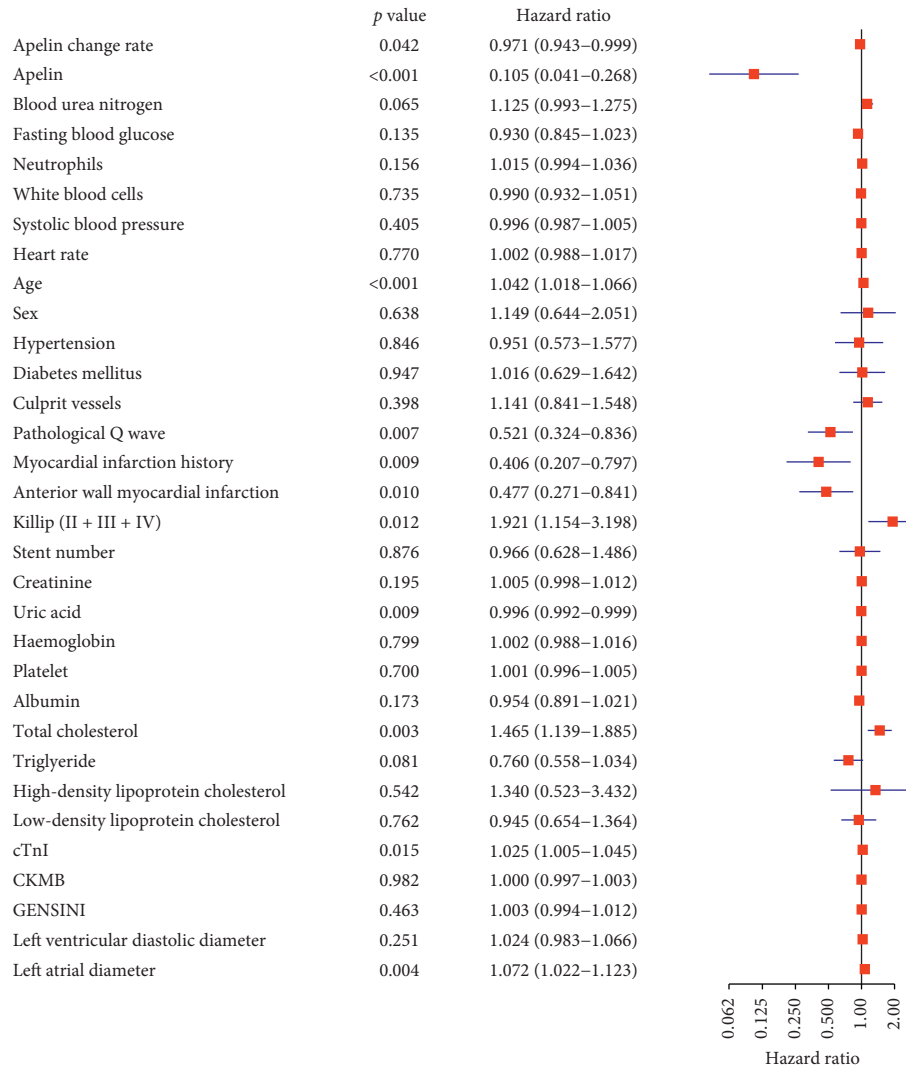


FIGURE 1: Multivariate Cox proportional hazards regression analysis showing the association of variables with major adverse cardiovascular events.

discrimination and calibration power to provide an individualized estimation for the MACEs risk at 1 and 2 years in STEMI patients after PCI. For the construction of the nomogram, 11 significant predictors were screened by the multivariate Cox proportional hazards regression analysis. They were also used to construct the apelin-related nomogram and has presented favorable discrimination and diagnostic value to predict the MACEs risk of patients with STEMI after PCI in the evaluation cohort (C-index: 0.758, 95%CI: 0.707–0.809). The validation cohort further confirmed the clinical significance of the nomogram with the C-index of 0.763 (95CI%: 0.689–0.837), which demonstrated an advantage of individual prediction of the MACEs risk in STEMI patients after PCI. We further compared the discrimination of the nomogram with that of the other already available risk scores to predict MACEs in the two cohorts. The apelin-12 based nomogram discrimination for MACEs prediction was superior to that of the other already available risk scores in both cohorts. These results indicate that these risk scores being derived from Western populations may

limit their application in Chinese populations. However, it is still not easy to choose when to use the nomogram. The role of the clinical decision curve analysis is to select the optimal schedule of treatment via analyzing all potential behaviors and outcomes in the clinical decision making process. In the study, according to the results of the DCA related to the apelin-based nomogram, when the threshold probability is >1% and <86%, the use of the nomogram would provide more benefit than either the treat-all-patients approach or the treat-none approach. Furthermore, the newly developed nomogram also displayed more powerful efficiency of discrimination for MACEs prediction in the whole cohort compared with the other available risk scores systems.

When it comes to the clinical application of the nomogram, we can take a 65-year-old male patient who has recently been diagnosed with STEMI with Killip’s classification of III and then performed PCI procedure. The patient presented a history of pathological Q wave, anterior wall myocardial infarction, and left atrial diameter of 35 mm. His apelin-12 level immediately before PCI was 0.79 ng/mL and

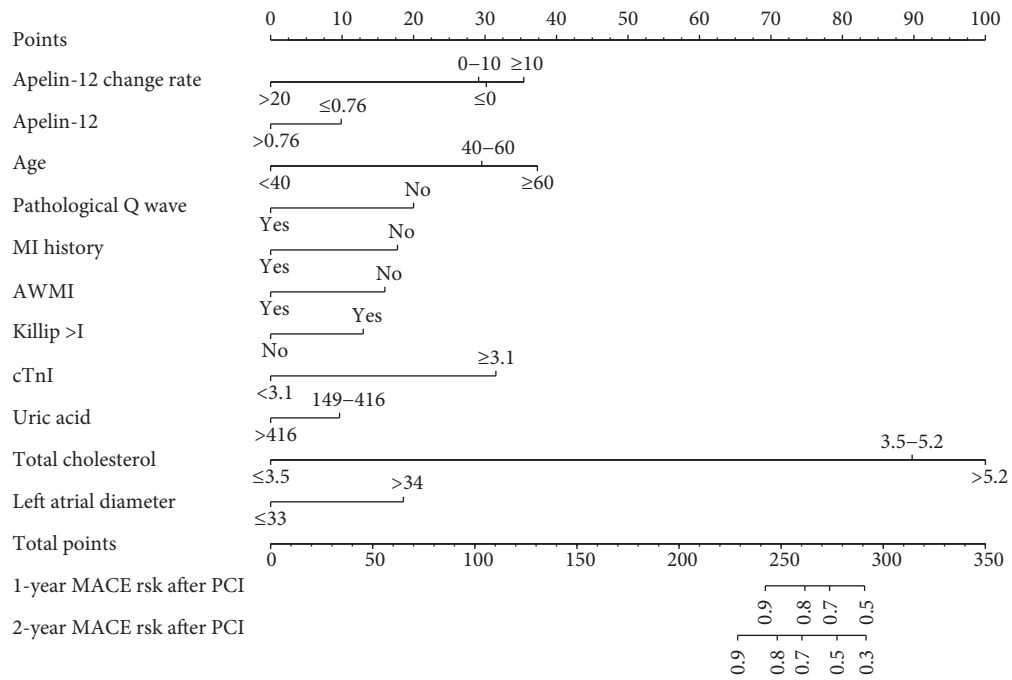


FIGURE 2: Nomogram predicting 1- and 2-year major adverse cardiovascular events probability for patients with ST-segment elevation myocardial infarction after primary percutaneous coronary intervention. The nomogram allows the clinician to determine the probability of the 1-year and 2-year risk for an individual patient using a combination of covariates. Using the patient’s age, you can draw a vertical line from that variable to the points scale. After repeating the process for each variable, the scores for each variable can be summed and located on the “Total Points” axis. Finally, a vertical line can be drawn straight down from the plotted total point axis to the probability axis to locate the likelihood of 1-year and 2-year risk.

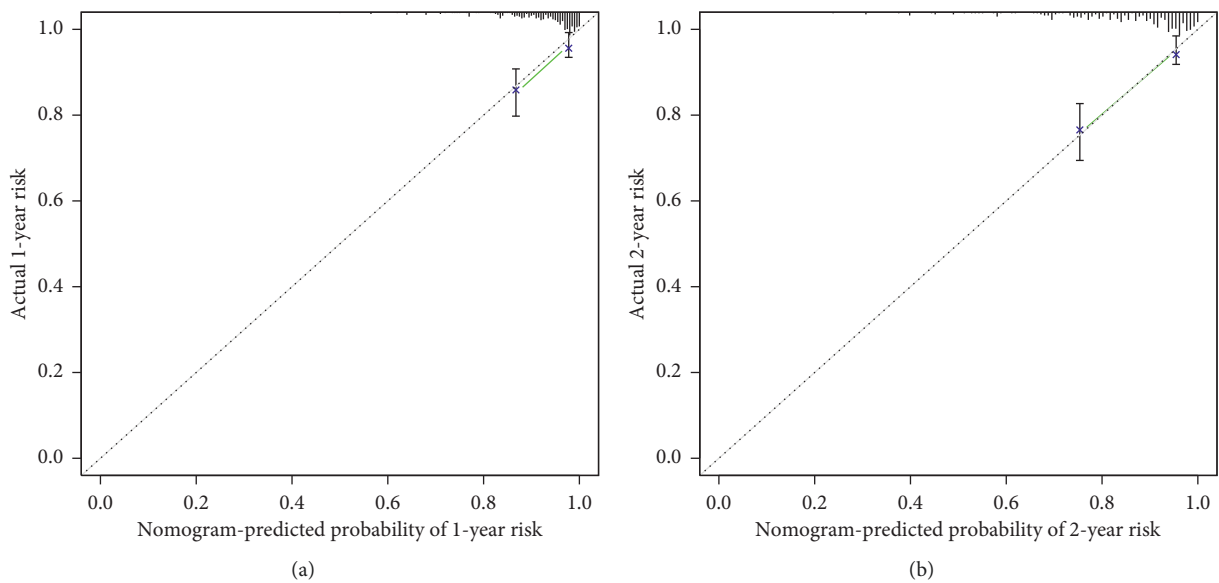


FIGURE 3: Continued.

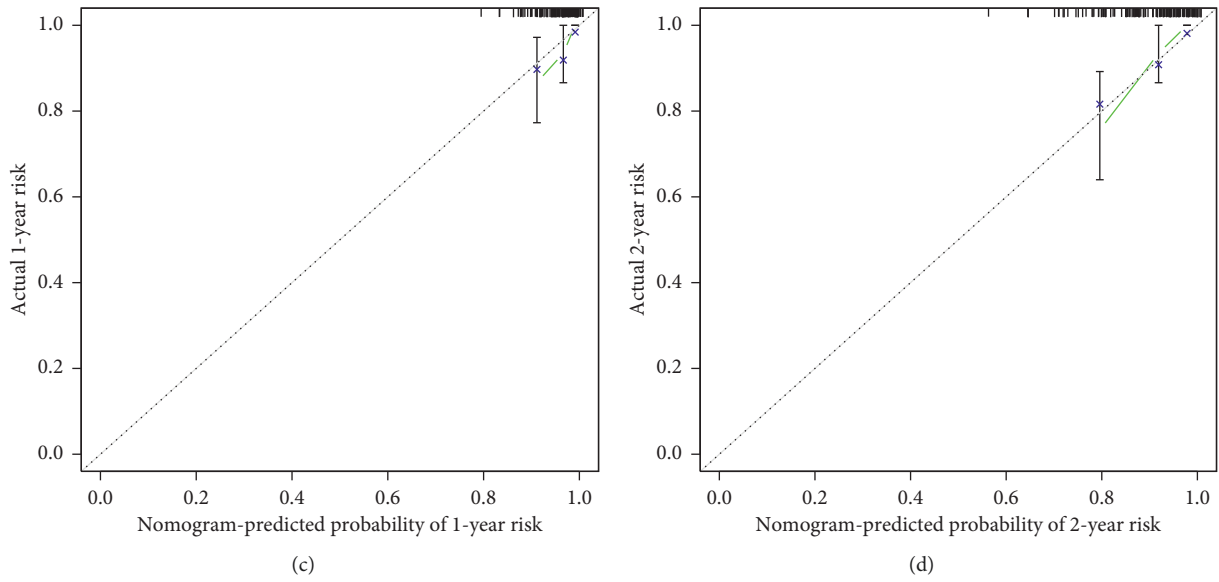


FIGURE 3: The calibration curve for predicting major adverse cardiovascular events probability at (a) 1 year and (b) 2 years in the evaluation cohort and at (c) 1 year and (d) 2 years in the validation cohort. Nomogram-predicted probability of major adverse cardiovascular events is plotted on the X-axis; actual probability is plotted on the Y-axis.

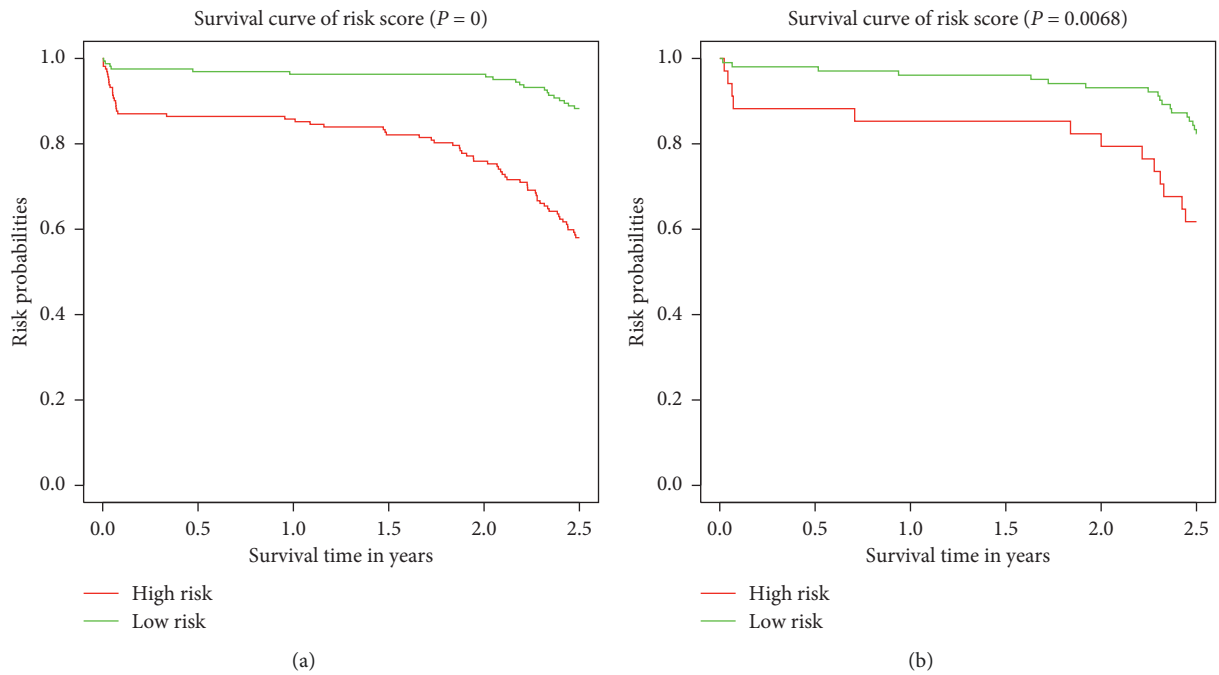


FIGURE 4: Continued.

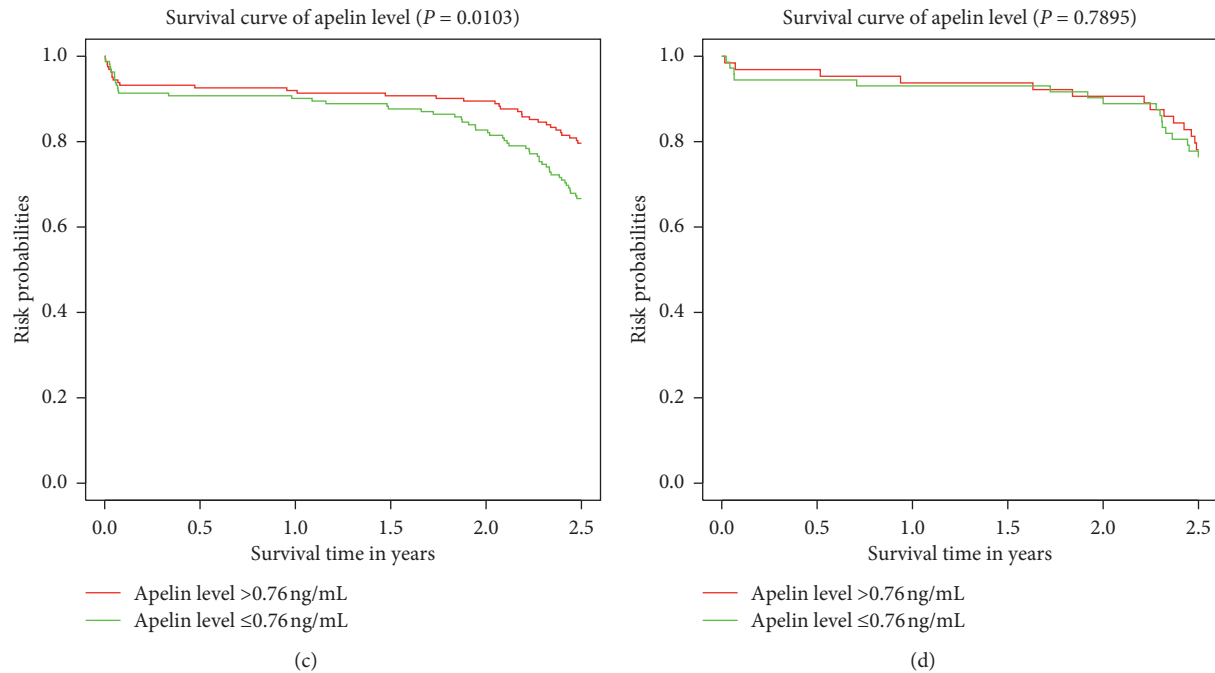


FIGURE 4: Kaplan-Meier survival curves of the evaluation and validation cohorts categorized into low- and high-risk groups. A significant association between the risk score and MACEs was observed in the evaluation cohort (a) and confirmed in the validation cohort (b). Survival curves between the higher apelin-12 group (>0.76 ng/mL) and lower apelin-12 group (≤ 0.76 ng/mL) in the evaluation cohort (c) and the validation cohort (d).

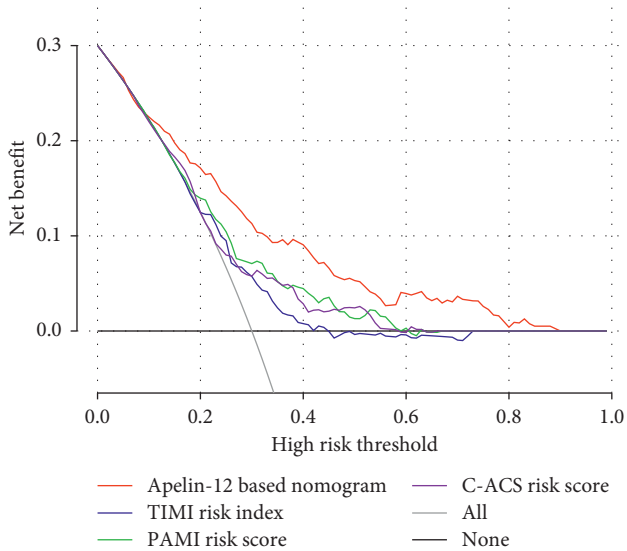


FIGURE 5: Decision curve analysis of apelin-12 based nomogram and other already available risk scores in terms of major adverse cardiovascular events risk in the whole cohort. The X-axis represents the threshold probability. The Y-axis measures the net benefit. The red line illustrates the major adverse cardiovascular events risk nomogram. The threshold probability is where the expected benefit of treatment balances the expected benefit of avoiding treatment.

72 hours after PCI was 12.36 ng/mL. The lab examination parameters of uric acid, triglyceride, and peak cTnI were 452 mmol/L, 7.66 mmol/L, and 38.5 ng/mL, respectively. He wonders about the probability of MACEs of 1-year and 2-year

TABLE 2: Comparisons of C-indexes of the present risk score with other already available risk scores to predict major adverse cardiovascular events in the evaluation and validation data sets.

Risk scores	Evaluation cohort		Validation cohort	
	C-index	95%CI	C-index	95%CI
Apelin-12 based nomogram	0.758	0.707–0.809	0.763	0.689–0.837
TIMI risk index	0.625	0.568–0.682	0.587	0.489–0.685
PAMI risk score	0.652	0.593–0.711	0.657	0.559–0.755
C-ACS risk score	0.638	0.579–0.697	0.614	0.514–0.714

TIMI = thrombolysis in myocardial infarction; PAMI = primary angioplasty in myocardial infarction; C-ACS = Canada acute coronary syndrome; CI = confidence interval.

risk. Using the patient's age, you can draw a vertical line from that variable to the points scale. After repeating the process for each variable, the scores for each variable can be summed and located on the "Total Points" axis. Finally, a vertical line can be drawn straight down from the plotted total point axis to the survival axis to locate the likelihood of 1-year and 2-year probability. Furthermore, the nomogram successfully stratified STEMI patients into high- and low-risk groups, and the high-risk group revealed a significantly lower probability of MACEs. Therefore, our nomogram may act as a precise and reliable predictive model for MACEs in patients with STEMI after PCI in Chinese populations, which may contribute to patient management.

To improve the primary prevention and management of cardiovascular diseases, several tools have been developed to

predict the probability of cardiovascular disease risk in different populations [8, 9, 18, 39]. However, they were mainly related to prevention of atherosclerotic cardiovascular disease, prediction of total fatal cardiovascular risk, and development of a cardiovascular disease risk algorithm. Besides, the variables varied in different models, and apelin-12 especially has never been used in a clinical nomogram. Therefore, we developed such nomogram for predicting the MACEs of STEMI patients after PCI. However, the limitations of the study should be considered. Firstly, the clinical variables used as potential predictors for MACEs were based on the Dryad data repository. It was difficult to acquire detailed information of all patients. Therefore, we failed to include other potential risk factors in our study, such as left ventricular ejection fraction. Besides, although our apelin-based prediction model confirmed favorable predictive power for MACEs, a multicenter validation study should be conducted to confirm the performance of the clinical nomogram in future investigations.

5. Conclusions

In summary, we developed and validated a nomogram incorporating both apelin-12 and clinical risk factors to predict MACEs in patients with STEMI after PCI in a Chinese population. Our nomogram showed a satisfactory performance, with a C-index of 0.763. This nomogram can be a precisely individualized predictive tool for prognosis. However, additional studies are needed to determine whether it can be applied to other populations before its implementation into clinical practice.

Data Availability

The data used to support the findings of this study are available from the corresponding author upon request.

Disclosure

Enfa Zhao and Hang Xie contributed equally to this work and should be considered co-first authors.

Conflicts of Interest

The authors declare that they have no conflicts of interest.

Authors' Contributions

Enfa Zhao, Hang Xie, and Yushun Zhang were responsible for the conception and design of the study, interpretation of data, drafting, and writing of the article. Enfa Zhao and Hang Xie were responsible for interpretation of data and revision of the intellectual content. All authors participated in final approval of the manuscript and agreed to be accountable for all aspects of the work.

Acknowledgments

The authors acknowledge the efforts of the Dryad data repository in providing high-quality open resources for researchers.

References

- [1] M. Zhou, H. Wang, J. Zhu et al., "Cause-specific mortality for 240 causes in China during 1990-2013: a systematic subnational analysis for the Global Burden of Disease Study 2013," *The Lancet*, vol. 387, no. 10015, pp. 251-272, 2016.
- [2] J. He, D. Gu, X. Wu et al., "Major causes of death among men and women in China," *New England Journal of Medicine*, vol. 353, no. 11, pp. 1124-1134, 2005.
- [3] L. The, "40 years of percutaneous coronary intervention: where next?" *The Lancet*, vol. 390, no. 10096, p. 715, 2017.
- [4] Y. L. Gu, M. A. Kampinga, W. G. Wieringa et al., "Intra-coronary versus intravenous administration of abciximab in patients with ST-segment elevation myocardial infarction undergoing primary percutaneous coronary intervention with thrombus aspiration," *Circulation*, vol. 122, no. 25, pp. 2709-2717, 2010.
- [5] S. Kilic, J. P. Ottervanger, J.-H. E. Dambrink et al., "The effect of thrombus aspiration during primary percutaneous coronary intervention on clinical outcome in daily clinical practice," *Thrombosis and Haemostasis*, vol. 111, no. 1, pp. 165-171, 2014.
- [6] L. Yang, T. Zheng, H. Wu et al., "Predictive value of apelin-12 in patients with ST-elevation myocardial infarction with different renal function: a prospective observational study," *BMJ Open*, vol. 7, no. 11, Article ID e018595, 2017.
- [7] R. B. D'Agostino Sr., R. S. Vasan, M. J. Pencina et al., "General cardiovascular risk profile for use in primary care: the Framingham Heart Study," *Circulation*, vol. 117, no. 6, pp. 743-753, 2008.
- [8] R. Conroy, K. Pyorala, A. P. Fitzgerald et al., "Estimation of ten-year risk of fatal cardiovascular disease in Europe: the SCORE project," *European Heart Journal*, vol. 24, no. 11, pp. 987-1003, 2003.
- [9] J. Hippisley-Cox, C. Coupland, Y. Vinogradova, J. Robson, M. May, and P. Brindle, "Derivation and validation of QRISK, a new cardiovascular disease risk score for the United Kingdom: prospective open cohort study," *BMJ*, vol. 335, no. 7611, p. 136, 2007.
- [10] D. C. Goff Jr., D. M. Lloyd-Jones, G. Bennett et al., "2013 ACC/AHA guideline on the assessment of cardiovascular risk," *Circulation*, vol. 129, no. 25S2, pp. S49-S73, 2014.
- [11] D. A. Morrow, E. M. Antman, A. Charlesworth et al., "TIMI risk score for ST-elevation myocardial infarction: a convenient, bedside, clinical score for risk assessment at presentation," *Circulation*, vol. 102, no. 17, pp. 2031-2037, 2000.
- [12] D. A. Morrow, E. M. Antman, R. P. Giugliano et al., "A simple risk index for rapid initial triage of patients with ST-elevation myocardial infarction: an InTIME II substudy," *The Lancet*, vol. 358, no. 9293, pp. 1571-1575, 2001.
- [13] M. F. Dorsch, R. A. Lawrance, R. J. Sapsford et al., "A simple benchmark for evaluating quality of care of patients following acute myocardial infarction," *Heart*, vol. 86, no. 2, pp. 150-154, 2001.
- [14] S. T. Vernon, S. Coffey, M. D'Souza et al., "ST-Segment-Elevation myocardial infarction (STEMI) patients without standard modifiable cardiovascular risk factors-how common are they, and what are their outcomes?" *Journal of the American Heart Association*, vol. 8, no. 21, p. e013296, 2019.
- [15] T. Huynh, S. Kouz, A. Yan et al., "Canada Acute Coronary Syndrome Risk Score: a new risk score for early prognostication in acute coronary syndromes," *American Heart Journal*, vol. 166, no. 1, pp. 58-63, 2013.

- [16] S. Addala, C. L. Grines, S. R. Dixon et al., "Predicting mortality in patients with ST-elevation myocardial infarction treated with primary percutaneous coronary intervention (PAMI risk score)," *The American Journal of Cardiology*, vol. 93, no. 5, pp. 629–632, 2004.
- [17] Y. Xin, Y. Zhao, X. Chen et al., "Derivation and evaluation of the ischemic risk model in high-risk Chinese patients undergoing percutaneous coronary intervention for acute coronary syndrome," *Clinical Therapeutics*, vol. 41, no. 4, pp. 754–765, 2019.
- [18] X. Yang, J. Li, D. Hu et al., "Predicting the 10-year risks of atherosclerotic cardiovascular disease in Chinese population," *Circulation*, vol. 134, no. 19, pp. 1430–1440, 2016.
- [19] I. Falcao-Pires and A. F. Leite-Moreira, "Apelin: a novel neurohumoral modulator of the cardiovascular system. Pathophysiologic importance and potential use as a therapeutic target," *Revista Portuguesa de Cardiologia*, vol. 24, no. 10, pp. 1263–1276, 2005.
- [20] M. J. Kleinz, J. N. Skepper, and A. P. Davenport, "Immunocytochemical localisation of the apelin receptor, APJ, to human cardiomyocytes, vascular smooth muscle and endothelial cells," *Regulatory Peptides*, vol. 126, no. 3, pp. 233–240, 2005.
- [21] Z. Ying, Y. Jiansong, W. Yong, and Q. Shubin, "Serum apelin predicts spontaneous reperfusion of infarct-related artery in patients with ST-segment elevation myocardial infarction," *Coronary Artery Disease*, vol. 30, no. 2, pp. 103–108, 2019.
- [22] Q. Zhou, L. Chen, M. Tang, Y. Guo, and L. Li, "Apelin/APJ system: a novel promising target for anti-aging intervention," *Clinica Chimica Acta*, vol. 487, pp. 233–240, 2018.
- [23] Y. Zhou, Y. Wang, and S. Qiao, "Apelin," *International Heart Journal*, vol. 55, no. 3, pp. 204–212, 2014.
- [24] A. G. Japp and D. E. Newby, "The apelin-APJ system in heart failure," *Biochemical Pharmacology*, vol. 75, no. 10, pp. 1882–1892, 2008.
- [25] T. Dai, G. Ramirez-Correa, and W. D. Gao, "Apelin increases contractility in failing cardiac muscle," *Eur J Pharmacol*, vol. 553, no. 1-3, pp. 222–228, 2006.
- [26] R. A. P. Weir, K. S. Chong, J. R. Dalzell et al., "Plasma apelin concentration is depressed following acute myocardial infarction in man," *European Journal of Heart Failure*, vol. 11, no. 6, pp. 551–558, 2009.
- [27] F. E. Harrell Jr., K. L. Lee, and D. B. Mark, "Multivariable prognostic models: issues in developing models, evaluating assumptions and adequacy, and measuring and reducing errors," *Statistics in Medicine*, vol. 15, no. 4, pp. 361–387, 1996.
- [28] A. J. Vickers and E. B. Elkin, "Decision curve analysis: a novel method for evaluating prediction models," *Medical Decision Making*, vol. 26, no. 6, pp. 565–574, 2006.
- [29] M. S. Rahman, G. Ambler, B. Choodari-Oskoei, and R. Z. Omar, "Review and evaluation of performance measures for survival prediction models in external validation settings," *BMC Medical Research Methodology*, vol. 17, no. 1, p. 60, 2017.
- [30] J. Cai, J. Cheng, H. Li et al., "A nomogram for the prediction of cerebrovascular disease among patients with brain necrosis after radiotherapy for nasopharyngeal carcinoma," *Radiotherapy and Oncology*, vol. 132, pp. 34–41, 2019.
- [31] D. K. Lee, R. Cheng, T. Nguyen et al., "Characterization of apelin, the ligand for the APJ receptor," *Journal of Neurochemistry*, vol. 74, no. 74, pp. 34–41, 2000.
- [32] O. Kunduzova, N. Alet, N. Delesque-Touchard et al., "Apelin/APJ signaling system: a potential link between adipose tissue and endothelial angiogenic processes," *The FASEB Journal*, vol. 22, no. 12, pp. 4146–4153, 2008.
- [33] I. Szokodi, P. Tavi, G. Földes et al., "Apelin, the novel endogenous ligand of the orphan receptor APJ, regulates cardiac contractility," *Circulation Research*, vol. 91, no. 5, pp. 434–440, 2002.
- [34] A. G. Japp, N. L. Cruden, D. A. B. Amer et al., "Vascular effects of apelin in vivo in man," *Journal of the American College of Cardiology*, vol. 52, no. 11, pp. 908–913, 2008.
- [35] A. G. Japp, N. L. Cruden, G. Barnes et al., "Acute cardiovascular effects of apelin in humans," *Circulation*, vol. 121, no. 16, pp. 1818–1827, 2010.
- [36] J. Ishida, T. Hashimoto, Y. Hashimoto et al., "Regulatory roles for APJ, a seven-transmembrane receptor related to angiotensin-type 1 receptor in blood pressure in vivo," *Journal of Biological Chemistry*, vol. 279, no. 25, pp. 26274–26279, 2004.
- [37] X. Cheng, X. S. Cheng, and C. C. Y. Pang, "Venous dilator effect of apelin, an endogenous peptide ligand for the orphan APJ receptor, in conscious rats," *European Journal of Pharmacology*, vol. 470, no. 3, pp. 171–175, 2003.
- [38] N. P. E. Kadoglou, S. Lampropoulos, A. Kapelouzou et al., "Serum levels of apelin and ghrelin in patients with acute coronary syndromes and established coronary artery disease-KOZANI STUDY," *Translational Research*, vol. 155, no. 5, pp. 238–246, 2010.
- [39] W. B. Kannel, D. McGee, and T. Gordon, "A general cardiovascular risk profile: the Framingham Study," *The American Journal of Cardiology*, vol. 38, no. 1, pp. 46–51, 1976.