

SCIENTIFIC REPORTS



OPEN

Novel green tissue-specific synthetic promoters and *cis*-regulatory elements in rice

Rui Wang¹, Menglin Zhu¹, Rongjian Ye¹, Zuoxiong Liu², Fei Zhou¹, Hao Chen¹ & Yongjun Lin¹

Received: 26 June 2015
Accepted: 16 November 2015
Published: 11 December 2015

As an important part of synthetic biology, synthetic promoter has gradually become a hotspot in current biology. The purposes of the present study were to synthesize green tissue-specific promoters and to discover green tissue-specific *cis*-elements. We first assembled several regulatory sequences related to tissue-specific expression in different combinations, aiming to obtain novel green tissue-specific synthetic promoters. GUS assays of the transgenic plants indicated 5 synthetic promoters showed green tissue-specific expression patterns and different expression efficiencies in various tissues. Subsequently, we scanned and counted the *cis*-elements in different tissue-specific promoters based on the plant *cis*-elements database PLACE and the rice cDNA microarray database CREP for green tissue-specific *cis*-element discovery, resulting in 10 potential *cis*-elements. The flanking sequence of one potential core element (GEAT) was predicted by bioinformatics. Then, the combination of GEAT and its flanking sequence was functionally identified with synthetic promoter. GUS assays of the transgenic plants proved its green tissue-specificity. Furthermore, the function of GEAT flanking sequence was analyzed in detail with site-directed mutagenesis. Our study provides an example for the synthesis of rice tissue-specific promoters and develops a feasible method for screening and functional identification of tissue-specific *cis*-elements with their flanking sequences at the genome-wide level in rice.

Synthetic biology, which combines biology and engineering to design and construct new biological parts, devices and systems, has shown great application potentials in many fields¹, such as the creation of cells controlled by synthetic genomes², acquisition of biofuels and pharmaceuticals produced by synthetic gene circuits³, and induction of the precise expression of target genes driven by synthetic promoters^{4,5}. As an important part of synthetic biology, synthetic promoter has gradually become a hotspot in current biology⁶.

As the most important tool of gene expression regulation in genetic engineering and synthetic biology, promoters can precisely regulate the expression of target genes to expected patterns and levels^{7,8} and are also crucial for exploring the mechanism of transcriptional regulation^{7,9–11}. More and more studies of synthetic promoters have been reported with the development of synthetic biology. Great efforts have been made to construct synthetic promoters in microorganisms. The major strategy is to fuse numerous *cis*-elements or random sequences with the core promoters and subsequently screen the synthetic promoters whose expression efficiencies are suitable for experimental purposes^{12–14}. However, this approach is both labor- and time-consuming for the study of synthetic promoters in plants, especially in crops with long growth periods, such as rice. In animals, recent studies have been focused on combining different promoters to construct synthetic promoter with higher expression efficiency and specificity^{15,16}.

Studies of synthetic promoters in plants are fewer and are mainly based on fusing *cis*-elements with core promoters. In 2012, Koschmann *et al.* applied BEST to discover conserved sequence motifs in the promoters of Arabidopsis genes up-regulated by multiple pathogenic stimuli. Then, they compared these motifs with the known *cis*-regulatory sequences in AthaMap, PLACE and AGRIS databases. The sequences showing no or only low similarity to the already-described regulatory sequences were analyzed with synthetic promoters¹⁷. This study provides an enlightening approach for seeking and identifying inducible *cis*-elements in other species. Another important work was conducted by Liu *et al.* in 2013, in which pathogen/defense signaling inducible *cis*-elements were fused with cauliflower mosaic virus (CaMV) 35S/Minimal CaMV 35S to drive a fluorescent protein reporter gene in stable transgenic tobacco and Arabidopsis. The expression of the reporter gene in transgenic plants with

¹National Key Laboratory of Crop Genetic Improvement and National Centre of Plant Gene Research, Huazhong Agricultural University, Wuhan, China. ²College of Foreign Language, Huazhong Agricultural University, Wuhan, China. Correspondence and requests for materials should be addressed to Y.L. (email: yongjunlin@mail.hzau.edu.cn)

bacterial pathogens or phytohormone treatments demonstrated that inducible synthetic promoters can function in transgenic tobacco and Arabidopsis⁵. A recent progress of synthetic promoters achieved by this team is that they conducted a comprehensive bioinformatic analysis for *de novo* soybean cyst nematode-inducible motif discovery in the soybean genome and then applied synthetic promoters to identify the candidate motifs in transgenic soybean hairy roots¹⁸. This study proves that the new high-throughput screening method has a high application potential in the discovery of inducible *cis*-elements. Much work in plants has been focused on inducible synthetic promoters, while studies of tissue-specific synthetic promoters have been rarely reported, and there is still no report of any tissue-specific synthetic promoter in rice. The main reason is that few *cis*-elements with clear functions which are involved in tissue-specific expression have been reported and no effective method for screening these *cis*-elements has been developed. Therefore, a high-throughput method for screening and identifying *cis*-elements related to tissue-specific expression is critical to the development of tissue-specific synthetic promoters.

Rice is one of the most important food crops in the world and a model plant for functional genomic researches in cereals¹⁹. More complete genomic information^{20–22} and more explicit gene expression information²³ greatly facilitate the studies of tissue-specific promoters. Much work has been done to clone tissue-specific promoters and to use them in genetic improvement of rice and gene functional analysis^{24–28}. The above studies lay a solid foundation for seeking tissue-specific *cis*-elements and constructing tissue-specific synthetic promoters in rice.

In this study, we assembled several short promoters and *cis*-elements related to tissue-specific expression ($P_{D540-544}$, $P_{Osrbc5-550}$, $P_{Osrbc5-62}$, *EnP3-110*, G box and GT1) as well as the first intron of rice *Act1* in different combinations, resulting in 5 novel green tissue-specific synthetic promoters which showed different expression efficiencies in various green tissues. Meanwhile, the functions of these expression regulatory sequences in synthetic promoters were also analyzed. As the feasibility of synthesizing tissue-specific promoters in rice was proved, an available method for the discovery of tissue-specific *cis*-elements is important to the development of tissue-specific synthetic promoters. Subsequently, we scanned and counted the *cis*-elements in different tissue-specific promoters based on the plant *cis*-elements database PLACE and the rice cDNA microarray database CREP, resulting in 10 *cis*-elements whose frequencies in green tissue-specific promoters were relatively higher. Finally, we identified a general regulatory sequence 5'-AAAATATTTTAT-3' (the underlined sequence indicates the core element), which can be applied in the synthesis of green tissue-specific promoters. As flanking sequence may influence the activity of the core element¹⁷, we applied site-directed mutagenesis to further analyze the function of the flanking sequence in detail. Our study provides an example for developing tissue-specific synthetic promoters in rice, and proposes a feasible method for screening and functional identification of tissue-specific *cis*-elements with their flanking sequences at the genome-wide level in rice.

Results

Creation of 5 novel green tissue-specific synthetic promoters (GSSPs). Several regulatory sequences ($P_{D540-544}$, $P_{Osrbc5-550}$, $P_{Osrbc5-62}$, *EnP3-110*, the first intron of rice *Act1*, G box and GT1) (Supplementary Fig. S1) related to tissue-specific expression according to previous reports^{7,29–33} were used for designing synthetic promoters. As the first intron of rice *Act1* is not a promoter but can increase the activity of the promoters adjacent to its upstream²⁹, it was placed in the 3' region of the synthetic promoters. Considering that the promoter module in the 3' region of the combinations might be more important to its expression specificity and $P_{D540-544}$ has activity not only in green tissues but also in root⁷, $P_{D540-544}$ was placed away from the 3' region of the synthetic promoters. If a single *cis*-element is added in the combinations, it should be quadrupled to increase its effect and placed upstream of a promoter, which is better to be a minimal promoter to avoid the interference from numerous *cis*-elements^{5,17}. Therefore, G Box or GT1 was quadrupled and placed upstream of $P_{Osrbc5-62}$ minimal promoter as the schemes of GSSP4 or GSSP6 showed (Fig. 1). Meanwhile, the specific combinations were designed for creating new synthetic promoters with desirable expression efficiencies and analyzing the functions of the regulatory sequences in synthetic promoters as well. GSSP1, GSSP3, GSSP5 and GSSP7 were designed to analyze the functions of $P_{D540-544}$, $P_{Osrbc5-550}$ and the first intron of rice *Act1* by comparing the activities of these synthetic promoters simultaneously. Likewise, GSSP2 and GSSP8 were selected to discover the function of *EnP3-110* by comparing the activities of GSSP2 and GSSP7 as well as GSSP8 and GSSP3. The schemes of all the synthetic promoters are shown in Fig. 1.

After GUS assays in transgenic plants, the results of histochemical staining in different tissues showed that 5 novel green tissue-specific synthetic promoters (GSSP1, GSSP3, GSSP5, GSSP6, GSSP7) were obtained, which only showed expression efficiencies in all or some of the 4 green tissues: leaf, sheath, panicle and stem (Fig. 2). The GUS fluorometric activities of various tissues in GSSPs transgenic plants (Fig. 3) were in accordance with the histochemical staining results. The expression efficiencies of the 5 synthetic promoters in leaf were ranked as GSSP3 > GSSP5 > GSSP1 > GSSP7 > GSSP6; while in sheath, they were ranked as GSSP1 > GSSP5 > GSSP3 > GSSP6 > GSSP7; in panicle, they were ranked as GSSP5 > GSSP6 > GSSP7 > GSSP3 > GSSP1; in stem, they were ranked as GSSP6 > GSSP5 > GSSP7 > GSSP3 > GSSP1. These synthetic promoters showed different expression efficiencies in various green tissues: GSSP3 and GSSP5 showed higher expression efficiencies than the positive control (CaMV 35S) in leaf, especially GSSP3, whose expression efficiency was 1.5-fold that of the positive control; GSSP1 and GSSP5 showed high expression efficiencies in sheath; while GSSP5 and GSSP6 showed high expression efficiencies in panicle; and only GSSP6 showed high expression efficiency in stem (Fig. 3). Therefore, these green tissue-specific synthetic promoters can be used for realizing efficient expression of different target genes to meet the requirements of various applications. Moreover, they overcome the defects of original regulatory sequences in tissue-specific expression: $P_{Osrbc5-62}$ had no activity in stem³², while GSSP6, in which the GT1 and the first intron of rice *Act1* were respectively added to the upstream and downstream of $P_{Osrbc5-62}$, showed sharply increased activity in stem; $P_{D540-544}$ had activity not only in green tissues but also in root⁷, while GSSP5, in which $P_{Osrbc5-550}$ and the first intron of rice *Act1* were inserted to the downstream of $P_{D540-544}$, abolished the activity of $P_{D540-544}$ in root.

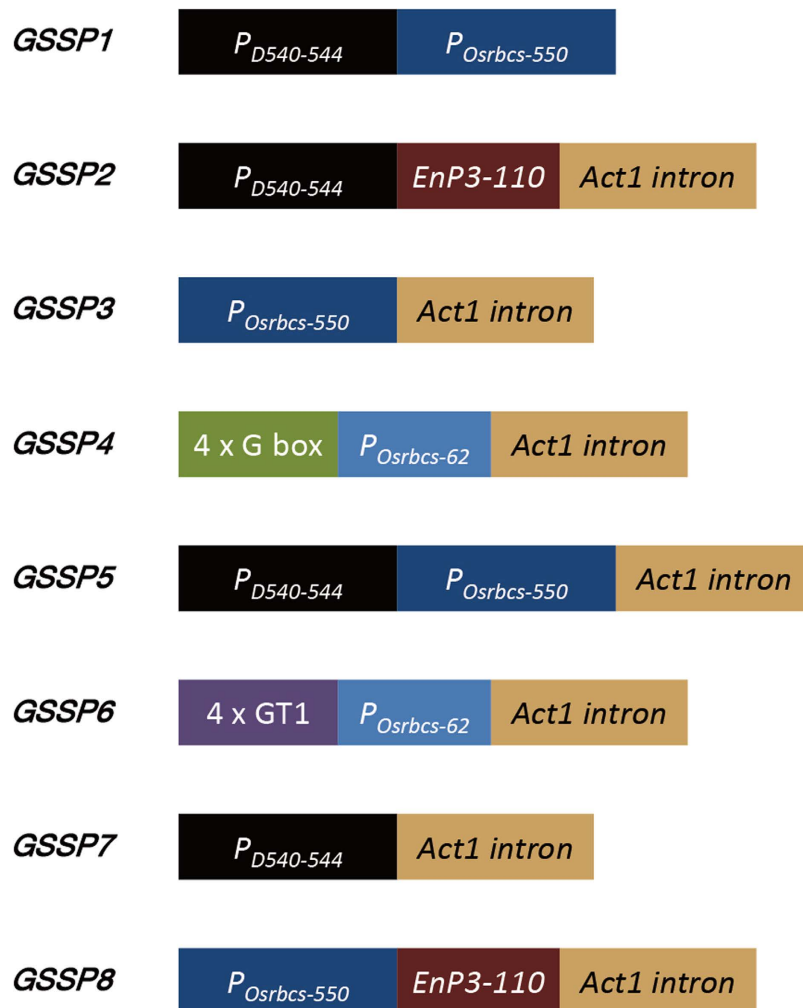


Figure 1. Schemes of 8 synthetic promoters assembled with different expression regulatory sequences.

Functions of tissue-specific expression related regulatory sequences in synthetic promoters. $P_{Osrbc5-550}$ has been reported to be a truncated green tissue-specific promoter³². According to Fig. 3, by comparing the GUS activity in leaf between GSSP2 and GSSP8 as well as between GSSP3 and GSSP7 transgenic plants, we found that when $P_{Osrbc5-550}$ was used to replace $P_{D540-544}$, the expression efficiency of the synthetic promoter in leaf was obviously increased. In addition, compared with that of the plants containing GSSP1, the GUS activity of GSSP3, GSSP5 and GSSP8 transgenic plants was more than twice in leaf. Based on the structures of the synthetic promoters, GSSP3, GSSP5 and GSSP8 contained both $P_{Osrbc5-550}$ and the first intron of rice *Act1*, while GSSP1 did not contain the first intron of rice *Act1*. Hence, it can be inferred that the coexistence of $P_{Osrbc5-550}$ and the first intron of rice *Act1* can sharply increase the activity of synthetic promoters in leaf. According to the GUS activity of GSSP1, GSSP3, GSSP5 and GSSP8 transgenic plants, the synthetic promoters containing $P_{Osrbc5-550}$ showed quite low expression efficiencies in stem. It can be inferred that $P_{Osrbc5-550}$ has suppressive effects on the activity of synthetic promoters in stem, suggesting that $P_{Osrbc5-550}$ contains the *cis*-elements which inhibit promoter activity in stem.

$P_{Osrbc5-62}$, a further truncated version of $P_{Osrbc5-550}$, had no activity in stem³². However, if it was placed between green tissue-specific *cis*-elements and the first intron of rice *Act1* (GSSP4 and GSSP6), the synthetic promoters showed high expression efficiencies in stem. Compared with the plants containing any synthetic promoters with $P_{Osrbc5-550}$ (GSSP1, GSSP3, GSSP5 and GSSP8), GSSP4 and GSSP6 transgenic plants showed much higher GUS activity in stem. The above results indicate that although $P_{Osrbc5-62}$ had no activity in stem (ie. $P_{Osrbc5-62}$ contained no *cis*-element which provided promoter activity in stem), the suppressive effect of $P_{Osrbc5-550}$ on promoter activity in stem was also eliminated when being truncated to $P_{Osrbc5-62}$, suggesting that the *cis*-elements which inhibit promoter activity in stem are present in the region between $P_{Osrbc5-550}$ and $P_{Osrbc5-62}$.

EnP3-110 has been reported to be a short green tissue-specific promoter³¹. By comparing the GUS activity in GSSP2 and GSSP7 transgenic plants, we found that when *EnP3-110* was added in the synthetic promoter, the expression level of the target gene in sheath, stem and root was sharply increased.

$P_{D540-544}$ was an expression regulatory sequence which had activity in green tissues as well as in root⁷. GUS activity in the root of GSSP1, GSSP5 and GSSP7 transgenic plants indicated that the activity of $P_{D540-544}$ in root can be abolished by $P_{Osrbc5-550}$ or the first intron of rice *Act1* adjacent to its downstream. The comparison of GUS activity in panicle between GSSP3 and GSSP5 transgenic plants indicated that when $P_{D540-544}$ was added in the synthetic

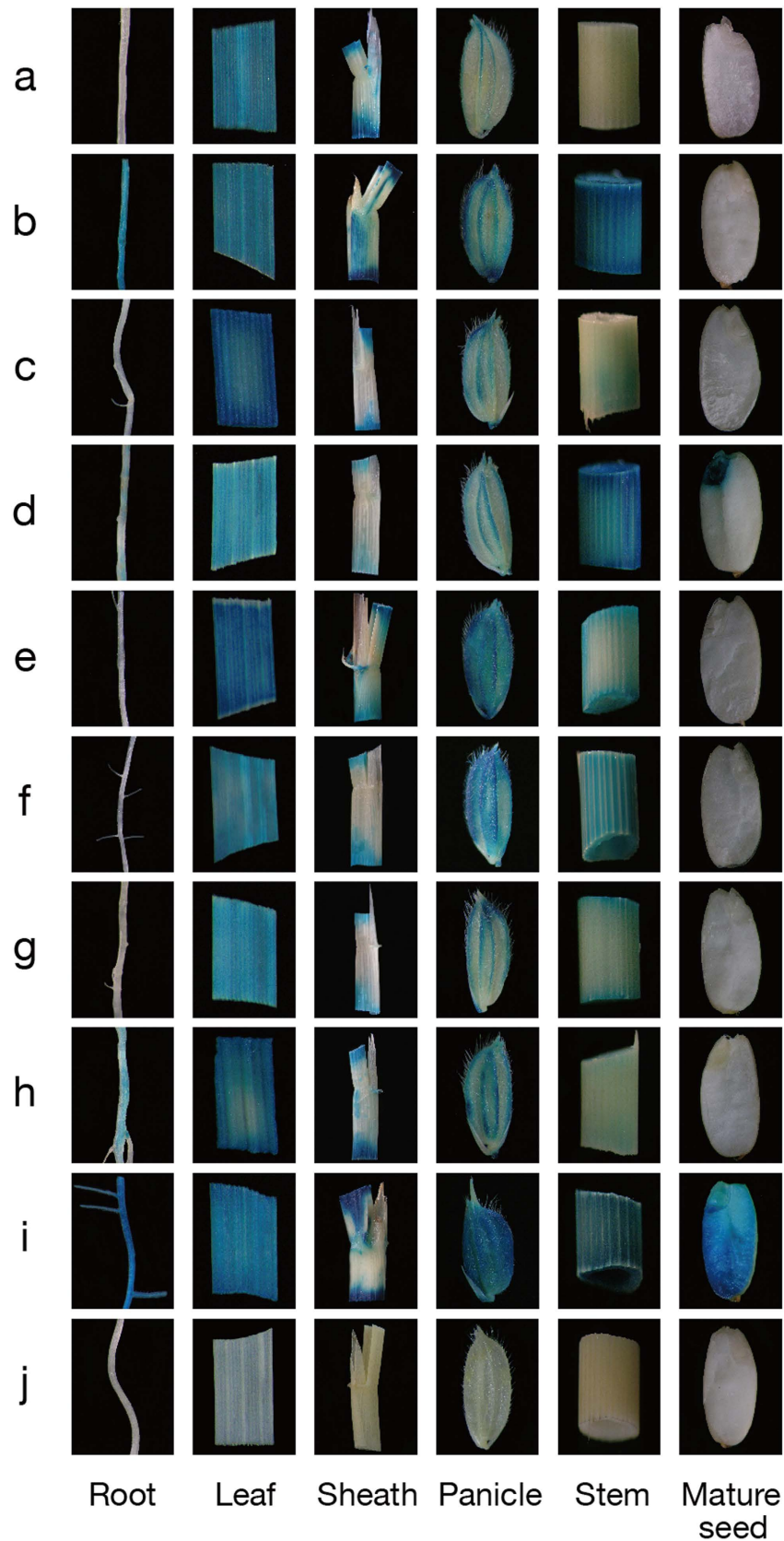


Figure 2. Histochemical analysis of *GUS* expression in various tissues of the transgenic plants containing different synthetic promoters/*GUS* fusions. (a–h) plants containing GSSP1-GSSP8::*GUS*; (i) positive control, plants containing CaMV 35S::*GUS*; (j) negative control, plants containing pDX2181 empty vector.

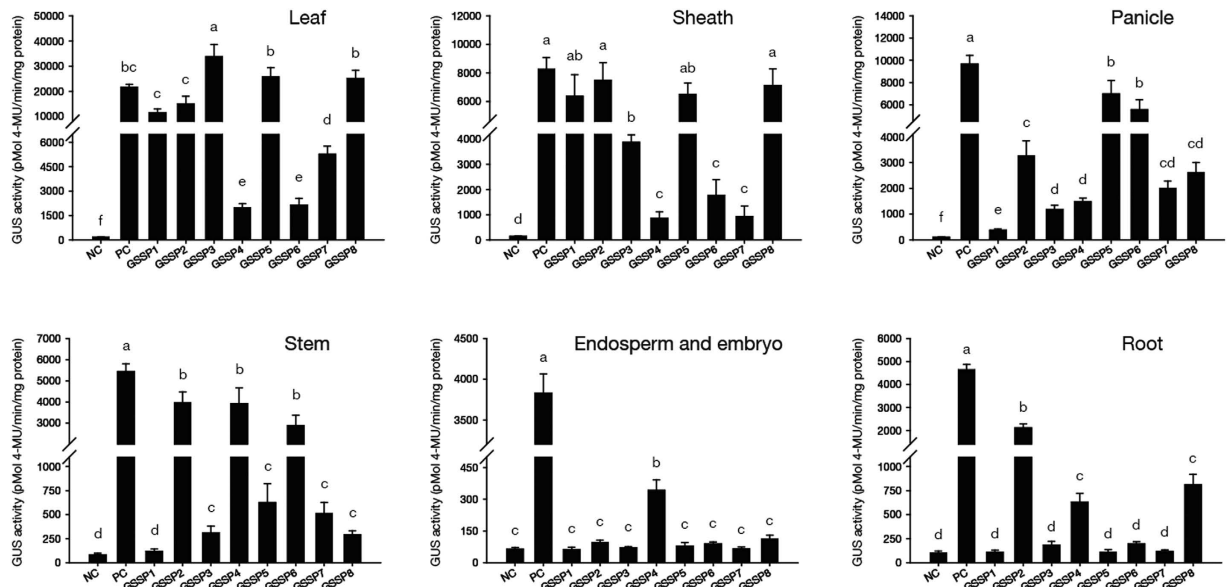


Figure 3. Quantitative analysis of GUS activity in various tissues of the transgenic plants containing different synthetic promoters/GUS fusions. NC, negative control, plants containing pDX2181 empty vector; PC, positive control, plants containing CaMV 35S::GUS; (a–f): significant difference ($P < 0.05$). Error bars indicate SE based on five independent biological replicates.

promoter, the expression level of the target gene in panicle was increased. However, the plants containing *GSSP1*, which was only composed of $P_{D540-544}$ and $P_{Osrbc5-550}$ showed quite low GUS activity in panicle. These results indicate that the coexistence of $P_{D540-544}$ and the first intron of rice *Act1* can dramatically increase the activity of synthetic promoters in panicle.

The G Box has been reported as a *cis*-element related to green tissue expression³⁰. However, by comparing GUS activity in *GSSP4* and *GSSP6* transgenic plants, we found that when the G Box was placed in the upstream of ' $P_{Osrbc5-62}$ + the first intron of rice *Act1*', activity of the synthetic promoter in non-green tissues embryo and root was observed. If GT1 was used to replace G Box, the expression pattern of the synthetic promoter could be restored to green tissue-specificity and the expression efficiency of the promoter in sheath and panicle was also obviously increased.

The first intron of rice *Act1* is an expression regulatory sequence, which can increase the activity of adjacent promoter²⁹. The above results indicate that the coexistence of the first intron of rice *Act1* and $P_{Osrbc5-550}/P_{D540-544}$ can greatly increase the activity of the synthetic promoter in leaf/panicle. Meanwhile, analysis of GUS activity in *GSSP1* and *GSSP5* transgenic plants suggested that the first intron of rice *Act1* can not increase the activity of the promoter in sheath, endosperm, embryo and root. These results imply that the increase of expression efficiency by the first intron of rice *Act1* shows some tissue-specificity, which might be related to the adjacent promoter³⁴.

Screening of *cis*-elements involved in green tissue-specific expression. According to the method described in Fig. 4, 10 potential *cis*-elements involved in green tissue-specific expression were obtained (Table 1). The frequencies and total numbers of these *cis*-elements in bioinformatic identification are shown in Table 2. Among them, GT1 and GATABOX are known *cis*-elements for light-regulation and green tissue-specific expression^{30,33}; CACTFTPPCA1 is involved in mesophyll-specific expression³⁵; MYCCONSENSUSAT was reported to be involved in green tissue-specific expression and cold-induction³⁶; and WBOXNTERF3 is related to the activation of gene expression by wounding in leaf³⁷. Besides, RAV1AAT might be related to high expression of transcription factor in leaf and root³⁸. Half of the 10 candidate *cis*-elements have been reported to be involved in green tissue expression, which proves the availability of our method. In order to find a novel *cis*-element involved in green tissue-specific expression, core element ROOTMOTIFTAPOX1 (5'-ATATT-3', here designated as GEAT which stands for Green tissue-specifically Expressed AT-rich element), which is not related to green tissue-specific expression based on the existing annotation, was selected for further study.

Bioinformatic analysis, identification and site-directed mutagenesis of GEAT flanking sequence. According to the scanning and statistical results of GEAT in GSPs and ESPs (Fig. 5a), GEAT and its flanking sequence (GEATFLK) was determined as 5'-A₁A₂A₃ATATTT₄A₅T₆-3' (The underlined sequence indicates GEAT). The method for the determination of GEAT flanking sequence was described in Methods. As the presence of TATABOX-like sequence led to the increase of frequency of T at the third site, A was set as the optimal base of the third site in order to avoid interference. Tetramer of GEATFLK was placed upstream of -46 Minimal 35S to promote the expression of *GUS* (Fig. 5b). The results of GUS assays in transgenic plants showed that the target gene was specifically expressed in leaf, sheath, panicle and stem (Fig. 5c). Thus, it can be confirmed that we successfully identified a novel green tissue-specific *cis*-element (GEAT) with its flanking sequence.

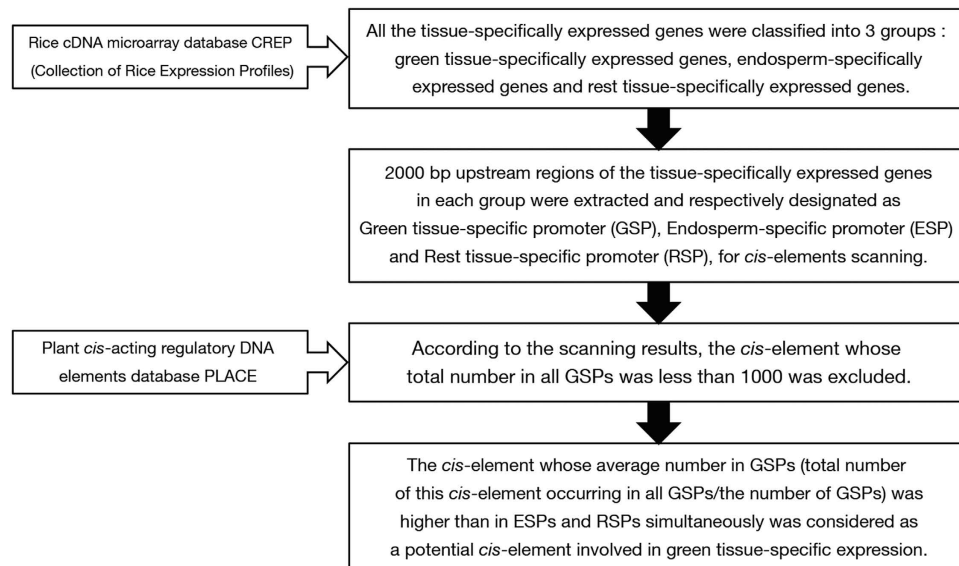


Figure 4. Bioinformatic identification of *cis*-elements involved in green tissue-specific expression.

<i>Cis</i> -elements	Sequence	Existing Annotation
GATABOX ³⁰	GATA	Involved in light-regulation and green tissue-specific expression
GT1 ³³	GRWAAW	Involved in light-regulated expression
CACTFTPPCA1 ³⁵	YACT	Involved in mesophyll-specific expression
MYCONSENSUSAT ³⁶	CANN TG	Involved in leaf and silique-specific expression and cold-induction
WBOXNTERF3 ³⁷	TGACY	Involved in activation of gene expression by wounding in tobacco leaf
ROOTMOTIFTAPOX1 ⁴⁸	ATATT	Involved in gene expression in root
RAVIAAT ³⁸	CAACA	Binding site of RAV1, which were highly expressed in rosette leaf and root
ARRIAT ⁵⁶	NGATT	Involved in activation of gene expression by the cytokinin-regulated transcription factor
WRKY71OS ⁵⁷	TGAC	Binding site of rice WRKY71, a transcriptional repressor of the gibberellin signaling pathway
CURECORECR ⁵⁸	GTAC	Involved in copper- and oxygen-response

Table 1. Sequences and annotations of 10 potential green tissue-specific *cis*-elements. *Cis*-elements which have been reported to be involved in green tissue-specific expression are indicated in bold.

Flanking sequence may influence the activity of core element¹⁷. Therefore, the function of GEAT flanking sequence was further analyzed by mutation assays (Fig. 5b). According to the results of GUS assays in single mutation transgenic plants, mutation at any of A₃, T₄ and T₆ could completely abolish the activity of GEAT, indicating that A₃, T₄ and T₆ are critical for the function of GEAT. Mutation at A₁ or A₅ could not eliminate the activity of GEAT in green tissues except for the stem, in which GEAT activity was lost (Fig. 5c). It can be inferred that A₁ and A₅ are important for maintaining the activity of GEAT in stem, and mutation at any of them can change the functional pattern of GEAT.

Since GEAT with single mutation at A₁ or A₅ still had activity in green tissues except for the stem, A₁ and A₅ were mutated simultaneously to find if double mutation can influence the functions of GEAT in other tissues. The results indicate that double mutation at A₁ and A₅ of GEAT resulted in the same expression pattern of the target gene with single mutation at A₁ or A₅. Hence, it can be inferred that multiple mutations at different flanking bases which have similar effects on GEAT can not produce a different functional pattern of GEAT with single mutation at one of these bases. As the mutation at A₅ could still maintain the activity of GEAT but the mutation at A₃ could not, A₃ and A₅ were mutated simultaneously to find out whether mutation at A₅ can restore the activity abolished by mutation at A₃. The result indicated that the activity of GEAT can not be restored by mutation at A₅. Therefore, it can be inferred that the mutation at any critical base results in an irreversible abolishment of GEAT activity, which can not be restored by mutation at other bases. Finally, the result of quadruple mutation in GEAT was consistent with our anticipation: when A₁, A₃, A₅ and T₆ were mutated simultaneously, the activity of GEAT was completely abolished.

According to the above results, the flanking sequence which supports the activity of GEAT was identified as 5'-AAAATATTTAT-3' (the dotted bases are critical for maintaining the function of GEAT).

Cis-elements	ANs			TNs
	GSPs	ESPs	RSPs	
CACTFTPPCA1	28.5	26.9	25.9	5980
ARRIAT	17.9	16.3	16.5	3749
MYCCONSENSUSAT	16.9	15.9	15.7	3556
GT1	14.7	13.9	13.5	3078
GATABOX	14.6	13.9	13.3	3073
WRKY71OS	12.7	11.7	11	2658
CURECORECR	11.3	10.6	10.2	2366
ROOTMOTIFTAPOX1	10.9	9.1	9.3	2296
WBOXNTERF3	6.4	5.3	5.0	1337
RAV1AAT	5.3	4.9	4.8	1111

Table 2. Average numbers (ANs) in GSPs, ESPs and RSPs and total numbers (TNs) in GSPs of 10 potential green tissue-specific cis-elements. (AN of a cis-element in GSPs = TN of this cis-element occurring in all GSPs/the number of GSPs).

Discussion

In this study, we fused several regulatory sequences related to tissue-specific expression in 8 different combinations. The GUS assays of transgenic plants confirmed that we successfully created 5 green tissue-specific synthetic promoters and proved the feasibility of synthesizing tissue-specific promoters in rice as well. Meanwhile, these novel synthetic promoters can overcome the defects of original regulatory sequences in tissue-specific expression. They also showed different expression efficiencies in various green tissues and thus can meet the requirements of various applications. GSSP3 showed the highest expression efficiency in leaf, which was 1.5-fold that of the positive control. Therefore, it can be applied to transgenic breeding for improving disease/pest resistance in rice leaf^{28,39}, as well as to the studies of the genes related to leaf senescence and other leaf traits⁴⁰. GSSP5 showed high expression efficiency in leaf, sheath and panicle. Hence, it can be used for efficient expression of the genes related to blast resistance in rice⁴¹ as well as for the studies of photosynthesis-related genes⁴². Although GSSP2 had activity in root, it showed the highest expression efficiency in sheath and stem among all the synthetic promoters and had no activity in endosperm and embryo. Therefore, it can be used for efficient expression of target genes for resistance to pest (such as striped stem borer, brown planthopper and rice plant weevil) and disease (such as rice sheath blight) in rice^{43–46}, and it is also helpful to the studies of height-related genes⁴⁷.

Subsequently, the functions of these expression regulatory sequences in synthetic promoters were analyzed. The results are highly valuable for the theoretical and applied research of synthetic promoters. For example, ' $P_{Osrbc5-550}$ + the first intron of rice *Act1*' or ' $P_{D540-544}$ + the first intron of rice *Act1*' can be added to the target promoter to achieve a great increase of promoter activity in leaf or in panicle, respectively; *EnP3-110* can be added to increase promoter activity in sheath, stem and root; and ' $GT1 + P_{Osrbc62}$ + the first intron of rice *Act1*' can be used to enhance promoter activity in sheath, stem and panicle. However, some functions of these expression regulatory sequences were different from those in previous reports. For example, $P_{Osrbc5-550}$, *EnP3-110* and G Box are green tissue-specific regulatory sequences. However, $P_{Osrbc5-550}$ shows suppressive effects on the synthetic promoter activity in stem; *EnP3-110* can greatly increase promoter activity in root; and when G Box is placed in the upstream of ' $P_{Osrbc62}$ + the first intron of rice *Act1*', it may increase promoter activity in non-green tissues embryo and root. These instances may arise from the interactions of cis-elements and should be explored in future studies.

Cis-element is an essential part of the synthetic promoter. As the feasibility of synthesizing tissue-specific promoters in rice was proved, an available method for the discovery of tissue-specific cis-elements is significant to the development of tissue-specific synthetic promoters. Therefore, another major aim of the present study was to screen and identify cis-elements related to green tissue-specific expression. With the screening method designed in this study, we obtained 10 potential cis-elements involved in green tissue-specific expression based on the information from the rice cDNA microarray database CREP. Half of the 10 candidate cis-elements have been reported to be involved in green tissue expression, which proves the availability of our method. In order to find a novel cis-element involved in green tissue-specific expression, a core element ROOTMOTIFTAPOX1, which is not related to green tissue-specific expression, was chosen and named as GEAT for further study. The results of GUS assays in *GEATFLK_MINI::GUS* transgenic plants showed that the target gene was specifically expressed in green tissues. This result demonstrates that we successfully identified a novel green tissue-specific expression related cis-element GEAT with its flanking sequence. Moreover, it further proves the reliability of this screening method.

As flanking sequence may influence the activity of core element¹⁷, the function of GEAT flanking sequence was analyzed specifically in this work. We found several bases which were indispensable to the whole function or functional pattern of GEAT: A₃, T₄ and T₆ are critical for the whole function of GEAT, and mutation at any of them can completely abolish the activity of GEAT; A₁ and A₅ are indispensable for the activity of GEAT in stem, and mutation at either of them can change the functional pattern of GEAT. Furthermore, based on the results of double mutation, we found that multiple mutations at different flanking bases which have similar effects on GEAT can not produce a different functional pattern of GEAT with single mutation at one of these bases, and mutation at a critical base will irreversibly abolish the activity of GEAT.

According to the statistical analysis of flanking bases, the frequency of T₄ was 44% in ESPs, while it reached up to 48% in GSPs. This result suggests that T₄ is important to GEAT, and is even more important to the function of

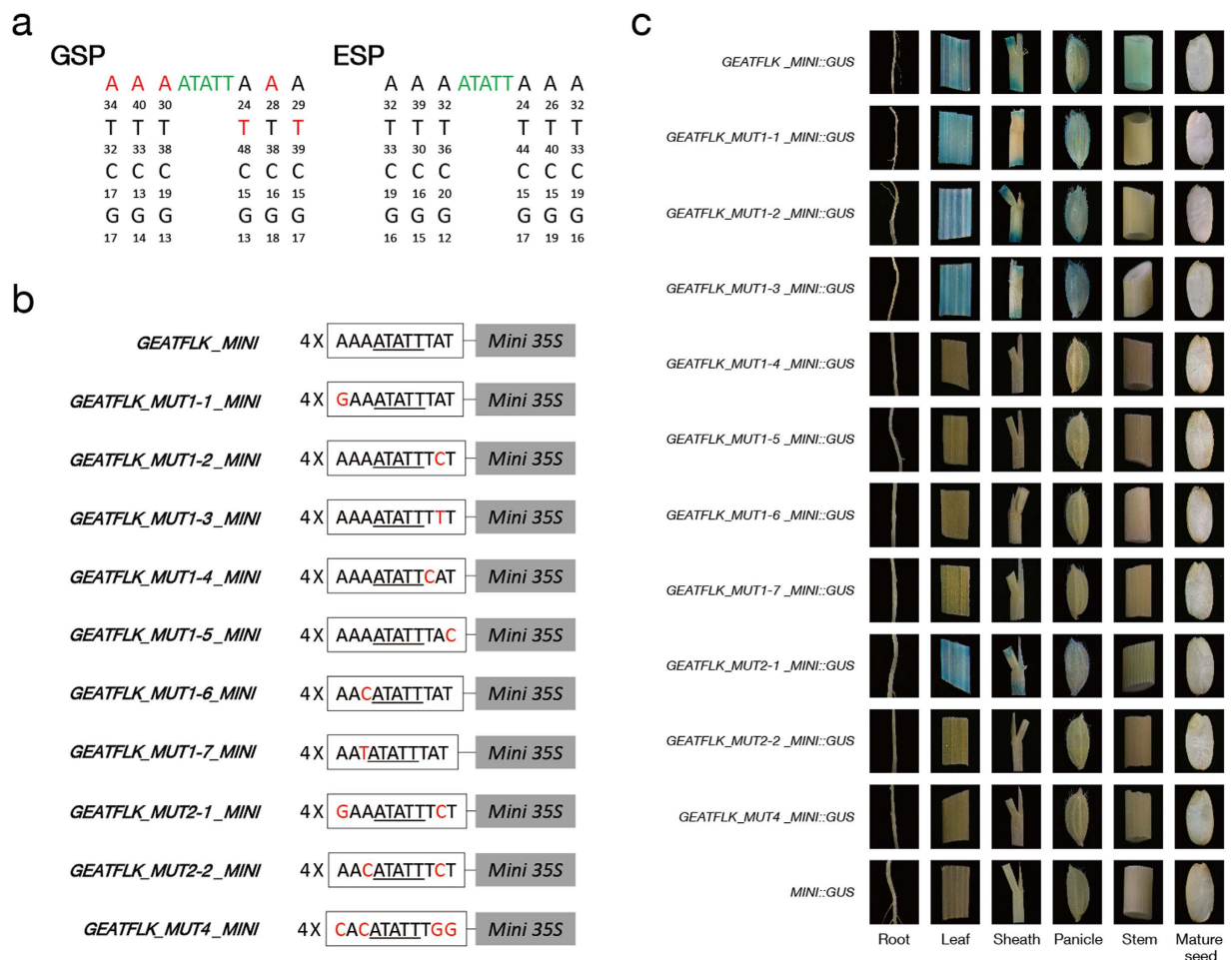


Figure 5. Bioinformatic and experimental analysis of GEAT flanking sequence. (a) Frequencies (%) of GEAT flanking sequence bases (3 left and 3 right) in GSPs and ESPs, respectively. Red letters indicate the bases chosen as optimal bases. (b) Schemes of synthetic promoters for functional identification of GEAT with its flanking sequence. Tetramer of GEAT and its flanking sequence ($4 \times$ GEATFLK / $4 \times$ GEATFLK_MUT) was placed upstream of -46 Minimal 35S. The underlined sequences indicate the core element GEAT. Mutation sites are indicated by red letters. (c) Histochemical analysis of *GUS* expression in transgenic plants for functional identification of GEAT with its flanking sequence. *MINI::GUS*, negative control, plants containing -46 Minimal 35S-pDX2181.

GEAT in GSPs. Mutation assays also proved that it is indispensable for the function of GEAT. T_6 showed similar characteristics with T_4 : its frequency was 33% in ESPs, and was 39% in GSPs. Our results also indicate that when T_6 is mutated, GEAT will completely lose its activity. These results verify the reliability of our method for flanking sequence analysis. We did not perform mutation assay at A_2 because whatever bases it was mutated to, several additional expression-promoting *cis*-elements will be formed in the mutant. Based on its frequency (39% in ESPs and 40% in GSPs), we infer that A_2 may play a role in the function of GEAT.

The original annotation of GEAT is a *cis*-element related to gene expression in root⁴⁸. However, the previous study only predicted its function with bioinformatic analysis, and did not identify this *cis*-element with transgenic approach. Besides, for the reason that flanking sequence may influence the activity of the core element¹⁷, we speculate that even if GEAT can function in root, its activity still needs the support from some specific flanking sequences. In this work, when we mutated A_1 or A_5 , GEAT could not maintain its activity in stem and the expression pattern of the target gene was changed, which also supports our hypothesis.

The traditional experimental approach for seeking and identifying *cis*-elements is mainly based on electrophoretic mobility shift assay (EMSA). However, either the weak binding capacity of *cis*-element and TFs or the low content of the target TFs in nuclear proteins may lead to the dissociation of the complex in gel electrophoresis. Besides, even if the TFs-binding activity of a *cis*-element has been proved, it remains unknown whether its interaction with TFs activates or represses transcription of genes, and whether the interaction functions constitutively or acts in specific tissues and stages. Therefore, it is still necessary to identify the *cis*-element with transgenic approaches. There are several instances in our study showing that some active *cis*-elements can not drive the expression of the target gene. For example, both TATABOX and SEF1MOTIF in *GEATFLK_MUT1-6_MINI* and *GEATFLK_MUT1-7_MINI* have been proved to possess TFs-binding activity^{49,50}, but even with these *cis*-elements,

GEATFLK_MUT1-6_MINI and *GEATFLK_MUT1-7_MINI* still had no activity. Meanwhile, when A_1 or A_5 was mutated, GEAT still showed activity in green tissues except for the stem, suggesting that even if the *cis*-element has TFs-binding and expression promoting activity, it is still uncertain whether the function pattern of the *cis*-element is changed. Therefore, EMSA is not sufficient to clarify the functions of *cis*-elements in gene expression. In this study, we initially applied synthetic promoters for the identification of tissue-specific *cis*-elements. This approach overcomes the limitation of EMSA in *cis*-element analysis and has been successfully applied to identify the function patterns of *cis*-elements combined with different flanking sequences. Overall, we obtained 5 novel green tissue-specific synthetic promoters which can be widely applied in genetic engineering, and provided an example for the synthesis of tissue-specific promoters in rice. We also developed a feasible method for screening and functional identification of tissue-specific *cis*-elements with their flanking sequences at the genome-wide level in rice.

Methods

Synthetic promoters vector construction. Sequences of $P_{D540-544}$, $P_{Osrbc5-550}$, $P_{Osrbc5-62}$, *EnP3-110*, the first intron of rice *Act1*, G box and GT1 used here were the same as previous reports^{7,29–33} (see Supplementary Fig. S1). The above regulatory sequences were respectively derived from: LOC_Os08g10020 ($P_{D540-544}$), LOC_Os12g17600 ($P_{Osrbc5-550}$), LOC_Os12g17600 ($P_{Osrbc5-62}$), LOC_Os03g55734 (*EnP3-110*) and LOC_Os03g50885 (the first intron of rice *Act1*). All of the regulatory sequences above were used to synthesize promoters, and their schemes are shown in Fig. 1. These constructs were synthesized by GenScript and ligated into the promoter functional analysis vector pDX2181 after digesting with *Hind* III and *Pst* I¹¹.

Agrobacterium-mediated transformation to rice callus. The sequence-confirmed clones were transformed into the *Agrobacterium tumefaciens* strain *EHA105* by electroporation. Subsequently, all the constructs were introduced into Zhonghua11 (*Oryza sativa* L. ssp. *japonica*) by *Agrobacterium*-mediated transformation. pDX2181 (the negative control) and CaMV 35S-pDX2181 (the positive control) were also introduced into Zhonghua11 in the same way. The callus culture and transformation procedures were carried out as previously described⁵¹.

Histochemical and fluorometric analysis of GUS activity. Histochemical staining of GUS activity in rice tissues was conducted essentially as described previously⁵². Various tissues of T_0 transgenic-positive transformants (root, leaf, sheath, panicle, stem and mature seed) were incubated in GUS staining solution (50 mM sodium phosphate at pH 7.0, 10 mM Na₂-EDTA, 0.1% Triton X-100, 1 mg/mL X-Gluc, 100 µg/ml chloramphenicol, 1 mM potassium ferricyanide, 1 mM potassium ferrocyanide and 20% methanol) at 37 °C for 2–10 h after 15-min vacuum filtration. After GUS staining, the samples were incubated in 70% ethanol to remove chlorophyll and photographs were taken under a dissecting microscope (Leica MZFLIII).

Quantitative analysis of GUS activity was conducted as previously described⁵³. The total protein concentration in the supernatant was quantified using the Bradford assay⁵⁴. GUS protein in the supernatant was determined fluorometrically with an INFINITE 200 photometer (Tecan Austria GmbH, Ltd, Grodig, Austria). GUS activity was determined fluorometrically by measuring the amount of 4-methylumbelliferone (Mu) produced under the catalysis of GUS in 1 mg of total protein per minute.

Screening of *cis*-elements involved in green tissue-specific expression. The information of various tissue-specifically expressed genes in rice was derived from the rice cDNA microarray database CREP (Collection of Rice Expression Profiles, <http://crep.ncpgr.cn>)²³. All the tissue-specifically expressed genes can be divided into 2 groups based on their expression patterns: green tissue-specifically expressed genes (expressed only in green tissues, such as shoot, leaf, sheath, spikelet, panicle (stage 5) and stem) and other tissue-specifically expressed genes. However, although other tissues are not green tissues, part of them are related to green tissues to some extent, such as panicle (stages 1–4) and plumule²³. Among the identified tissues in this study, endosperm has no relationship with green tissues and the number of endosperm-specifically expressed genes is sufficient to exclude the influence of the random arrangement of bases in *cis*-elements analysis. Therefore, we separated endosperm-specifically expressed genes from other tissue-specifically expressed genes as an independent control in order to avoid the interference from numerous non-green tissue-specifically expressed genes. Hence, we divided all the tissue-specifically expressed genes into 3 groups: green tissue-specifically expressed genes ($n = 210$), endosperm-specifically expressed genes ($n = 164$) and rest tissue-specifically expressed genes ($n = 1019$). 2000 bp upstream regions of these genes were extracted and set as promoters for analysis of *cis*-elements, which were designated as Green tissue-specific promoter (GSP), Endosperm-specific promoter (ESP) and Rest tissue-specific promoter (RSP), respectively. Based on the information of *cis*-elements in PLACE database⁵⁵, frequencies of various *cis*-elements in GSPs, ESPs and RSPs were scanned and subsequently counted. According to the results, the total number of a single *cis*-element occurring in all GSPs ranged from 1 to 6000. In order to exclude the influence of random events, the *cis*-element whose total number in all GSPs was less than 1000 was abandoned. Among the rest *cis*-elements, the one whose average number in GSPs (total number of this *cis*-element occurring in all GSPs/the number of GSPs) was simultaneously higher than in ESPs and RSPs was considered as a potential *cis*-element involved in green tissue-specific expression (Fig. 4).

Bioinformatic analysis, identification and site-directed mutagenesis of GEAT flanking sequence. GEAT flanking sequence composed of six 'optimal bases' (3 left and 3 right) was determined based on the scanning and statistical results of GEAT in GSPs and ESPs. A GEAT flanking sequence base was set as an optimal base if its frequency at one site in GSPs was higher than at the corresponding site in ESPs and was also higher than 25%.

Tetramer of GEAT and its flanking sequence (4 × GEATFLK) was placed upstream of –46 Minimal 35S to promote the expression of *GUS* (*GEATFLK_MINI::GUS*) (Fig. 5b). Under the premise of no formation of additional

expression-promoting *cis*-elements, the flanking sequence of GEAT was treated with single, double and quadruple mutation. Tetramer of GEAT and its mutant flanking sequence was placed upstream of −46 Minimal 35S to promote the expression of *GUS* (*GEATFLK_MUT_MINI::GUS*) (Fig. 5b). All the constructs above and −46 Minimal 35S-pDX2181 (*MINI::GUS*, the negative control) were transformed into Zhonghua 11, respectively. Vector construction, callus culture and transformation as well as histochemical staining of *GUS* activity were performed as described above.

References

- Baltes, N. J. & Voytas, D. F. Enabling plant synthetic biology through genome engineering. *Trends Biotechnol.* **33**, 120–131 (2014).
- Gibson, D. G. *et al.* Creation of a bacterial cell controlled by a chemically synthesized genome. *Science* **329**, 52–56 (2010).
- Slusarczyk, A. L., Lin, A. & Weiss, R. Foundations for the design and implementation of synthetic genetic circuits. *Nat. Rev. Genet.* **13**, 406–420 (2012).
- Chen, Y. S. *et al.* A late embryogenesis abundant protein HVA1 regulated by an inducible promoter enhances root growth and abiotic stress tolerance in rice without yield penalty. *Plant Biotechnol. J.* **13**, 105–116 (2015).
- Liu, W. *et al.* Bacterial pathogen phyto-sensing in transgenic tobacco and *Arabidopsis* plants. *Plant Biotechnol. J.* **11**, 43–52 (2013).
- Venter, M. Synthetic promoters: genetic control through *cis* engineering. *Trends Plant Sci.* **12**, 118–124 (2007).
- Cai, M., Wei, J., Li, X., Xu, C. & Wang, S. A rice promoter containing both novel positive and negative *cis*-elements for regulation of green tissue-specific gene expression in transgenic plants. *Plant Biotechnol. J.* **5**, 664–674 (2007).
- Yi, N. *et al.* Analysis of the *Wsi18*, a stress-inducible promoter that is active in the whole grain of transgenic rice. *Transgenic Res.* **20**, 153–163 (2011).
- Balasubramani, A. *et al.* Deletion of a Conserved *cis*-Element in the *Ifng* Locus Highlights the Role of Acute Histone Acetylation in Modulating Inducible Gene Transcription. *PLoS Genet.* **10**, e1003969 (2014).
- Walcher, C. L. & Nemhauser, J. L. Bipartite promoter element required for auxin response. *Plant Physiol.* **158**, 273–282 (2012).
- Ye, R., Zhou, F. & Lin, Y. Two novel positive *cis*-regulatory elements involved in green tissue-specific promoter activity in rice (*Oryza sativa* L. ssp.). *Plant Cell Rep.* **31**, 1159–1172 (2012).
- Rytter, J. V. *et al.* Synthetic promoter libraries for *Corynebacterium glutamicum*. *Appl. Microbiol. Biotechnol.* **98**, 2617–2623 (2014).
- Sohoni, S. V., Fazio, A., Workman, C. T., Mijakovic, I. & Lantz, A. E. Synthetic Promoter Library for modulation of actinorhodin production in *Streptomyces coelicolor* A3 (2). *PLoS one* **9**, e99701 (2014).
- Yim, S. S., An, S. J., Kang, M., Lee, J. & Jeong, K. J. Isolation of fully synthetic promoters for high-level gene expression in *Corynebacterium glutamicum*. *Biotechnol. Bioeng.* **110**, 2959–2969 (2013).
- Dai, J. *et al.* The combination of a synthetic promoter and a CMV promoter improves foreign gene expression efficiency in myocytes. *J. Biotechnol.* **158**, 91–96 (2012).
- Kang, W. *et al.* A macrophage-specific synthetic promoter for therapeutic application of adiponectin. *Gene Ther.* **21**, 353–362 (2014).
- Koschmann, J. *et al.* Integration of bioinformatics and synthetic promoters leads to the discovery of novel elicitor-responsive *cis*-regulatory sequences in *Arabidopsis*. *Plant Physiol.* **160**, 178–191 (2012).
- Liu, W. *et al.* Computational discovery of soybean promoter *cis*-regulatory elements for the construction of soybean cyst nematode-inducible synthetic promoters. *Plant Biotechnol. J.* **12**, 1015–1026 (2014).
- Zhang, Q. Strategies for developing green super rice. *Proc. Natl Acad. Sci. USA* **104**, 16402–16409 (2007).
- Goff, S. A. *et al.* A draft sequence of the rice genome (*Oryza sativa* L. ssp. *japonica*). *Science* **296**, 92–100 (2002).
- Yu, J. *et al.* A draft sequence of the rice genome (*Oryza sativa* L. ssp. *indica*). *Science* **296**, 79–92 (2002).
- Pan, Y. *et al.* Comparative BAC-based physical mapping of *Oryza sativa* ssp. *indica* var. 93-11 and evaluation of the two rice reference sequence assemblies. *Plant J.* **77**, 795–805 (2014).
- Wang, L. *et al.* A dynamic gene expression atlas covering the entire life cycle of rice. *Plant J.* **61**, 752–766 (2010).
- Azria, D. & Bhalla, P. L. *Agrobacterium*-mediated transformation of Australian rice varieties and promoter analysis of major pollen allergen gene, *Ory s 1*. *Plant cell rep.* **30**, 1673–1681 (2011).
- Ha, S. H. *et al.* Application of two bicistronic systems involving 2A and IRES sequences to the biosynthesis of carotenoids in rice endosperm. *Plant Biotechnol. J.* **8**, 928–938 (2010).
- Jeong, J. S. *et al.* *OsNAC5* overexpression enlarges root diameter in rice plants leading to enhanced drought tolerance and increased grain yield in the field. *Plant Biotechnol. J.* **11**, 101–114 (2013).
- Molla, K. A. *et al.* Rice *oxalate oxidase* gene driven by green tissue-specific promoter increases tolerance to sheath blight pathogen (*Rhizoctonia solani*) in transgenic rice. *Mol. Plant Pathol.* **14**, 910–922 (2013).
- Ye, R. *et al.* Development of insect-resistant transgenic rice with Cry1C⁺-free endosperm. *Pest Manag. Sci.* **65**, 1015–1020 (2009).
- McElroy, D., Zhang, W., Cao, J. & Wu, R. Isolation of an efficient actin promoter for use in rice transformation. *Plant cell* **2**, 163–171 (1990).
- Donald, R. & Cashmore, A. R. Mutation of either G box or I box sequences profoundly affects expression from the *Arabidopsis rbcS-LA* promoter. *EMBO J.* **9**, 1717–1726 (1990).
- Ye, R. Isolation, functional characterization and application of the tissue specific expression promoters from rice. Ph.D. Dissertation, Huazhong Agricultural University, (2012).
- Huang, H. & Lin, Y. Cloning and functional analysis of the rice *rbcS* gene promoter. *J. Huazhong Agr. Univ.* **15**, 451–458 (2007).
- Lam, E. & Chua, N. H. GT-1 binding site confers light responsive expression in transgenic tobacco. *Science* **248**, 471–474 (1990).
- Oszvald, M. *et al.* Development and characterization of a chimaeric tissue-specific promoter in wheat and rice endosperm. *In Vitro Cell. Dev. Biol. Plant* **44**, 1–7 (2008).
- Gowik, U. *et al.* *Cis*-Regulatory Elements for Mesophyll-Specific Gene Expression in the C₄ Plant *Flaveria trinervia*, the Promoter of the C₄ Phosphoenolpyruvate Carboxylase Gene. *Plant cell* **16**, 1077–1090 (2004).
- Hartmann, U., Sagasser, M., Mehrrens, F., Stracke, R. & Weisshaar, B. Differential combinatorial interactions of *cis*-acting elements recognized by R2R3-MYB, BZIP, and BHLH factors control light-responsive and tissue-specific activation of phenylpropanoid biosynthesis genes. *Plant Mol. Biol.* **57**, 155–171 (2005).
- Nishiuchi, T., Shinshi, H. & Suzuki, K. Rapid and Transient Activation of Transcription of the *ERF3* Gene by Wounding in Tobacco Leaves. *J. Biol. Chem.* **279**, 55355–55361 (2004).
- Kagaya, Y., Ohmiya, K. & Hattori, T. RAV1, a novel DNA-binding protein, binds to bipartite recognition sequence through two distinct DNA-binding domains uniquely found in higher plants. *Nucleic Acids Res.* **27**, 470–478 (1999).
- Chen, F. *et al.* Plasma membrane localization and potential endocytosis of constitutively expressed XA21 proteins in transgenic rice. *Mol. Plant* **3**, 917–926 (2010).
- Zhou, Y. *et al.* Identification and functional characterization of a rice NAC gene involved in the regulation of leaf senescence. *BMC Plant Biol.* **13**, 132 (2013).
- Hua, L. *et al.* The isolation of *Pi1*, an allele at the *Pik* locus which confers broad spectrum resistance to rice blast. *Theor. Appl. Genet.* **125**, 1047–1055 (2012).
- Li, C. *et al.* A rice plastidial nucleotide sugar epimerase is involved in galactolipid biosynthesis and improves photosynthetic efficiency. *PLoS Genet.* **7**, e1002196 (2011).

43. Du, B. *et al.* Identification and characterization of *Bph14*, a gene conferring resistance to brown planthopper in rice. *Proc. Natl Acad. Sci. USA* **106**, 22163–22168 (2009).
44. Shah, J. M., Raghupathy, V. & Veluthambi, K. Enhanced sheath blight resistance in transgenic rice expressing an endochitinase gene from *Trichoderma virens*. *Biotechnol. Lett.* **31**, 239–244 (2009).
45. Wang, R. *et al.* Functional analysis of *OsPGIP1* in rice sheath blight resistance. *Plant Mol. Biol.* **87**, 181–191 (2015).
46. Yang, Z., Chen, H., Tang, W., Hua, H. & Lin, Y. Development and characterisation of transgenic rice expressing two *Bacillus thuringiensis* genes. *Pest Manag. Sci.* **67**, 414–422 (2011).
47. Zhu, L. *et al.* Identification and characterization of *SHORTENED UPPERMOST INTERNODE 1*, a gene negatively regulating uppermost internode elongation in rice. *Plant Mol. Biol.* **77**, 475–487 (2011).
48. Elmayan, T. & Tepfer, M. Evaluation in tobacco of the organ specificity and strength of the *rolD* promoter, domain A of the 35S promoter and the 35S² promoter. *Transgenic Res.* **4**, 388–396 (1995).
49. Grace, M. L., Chandrasekharan, M. B., Hall, T. C. & Crowe, A. J. Sequence and spacing of TATA box elements are critical for accurate initiation from the β -phaseolin promoter. *J. Biol. Chem.* **279**, 8102–8110 (2004).
50. Lessard, P. A. *et al.* Multiple nuclear factors interact with upstream sequences of differentially regulated β -conglycinin genes. *Plant Mol. Biol.* **16**, 397–413 (1991).
51. Hiei, Y., Ohta, S., Komari, T. & Kumashiro, T. Efficient transformation of rice (*Oryza sativa* L.) mediated by *Agrobacterium* and sequence analysis of the boundaries of the T-DNA. *Plant J.* **6**, 271–282 (1994).
52. Jefferson, R. A., Kavanagh, T. A. & Bevan, M. W. GUS fusions: β -glucuronidase as a sensitive and versatile gene fusion marker in higher plants. *EMBO J.* **6**, 3901–3907 (1987).
53. Xu, L. *et al.* Isolation of the endosperm-specific *LPAAT* gene promoter from coconut (*Cocos nucifera* L.) and its functional analysis in transgenic rice plants. *Plant Cell Rep.* **29**, 1061–1068 (2010).
54. Bradford, M. M. A rapid and sensitive method for the quantitation of microgram quantities of protein utilizing the principle of protein-dye binding. *Anal. Biochem.* **72**, 248–254 (1976).
55. Higo, K., Ugawa, Y., Iwamoto, M. & Korenaga, T. Plant *cis*-acting regulatory DNA elements (PLACE) database: 1999. *Nucleic Acids Res.* **27**, 297–300 (1999).
56. Ross, E. J. *et al.* Activation of the *Oryza sativa* non-symbiotic haemoglobin-2 promoter by the cytokinin-regulated transcription factor, ARR1. *J. Exp. Bot.* **55**, 1721–1731 (2004).
57. Zhang, Z. L. *et al.* A rice *WRKY* gene encodes a transcriptional repressor of the gibberellin signaling pathway in aleurone cells. *Plant Physiol.* **134**, 1500–1513 (2004).
58. Kropat, J. *et al.* A regulator of nutritional copper signaling in *Chlamydomonas* is an SBP domain protein that recognizes the GTAC core of copper response element. *Proc. Natl Acad. Sci. USA* **102**, 18730–18735 (2005).

Acknowledgements

This research was supported by the National Program of Transgenic Variety Development of China (2014ZX08001001), the National High Technology Research and Development Program of China (863 Program) and the National Natural Science Foundation of China.

Author Contributions

Y.L. and R.W. conceived and designed the experiments. R.W. and M.Z. performed the experiments. R.W. performed the data analysis. R.W., Y.L. and R.Y. wrote the paper. Z.L., F.Z. and H.C. revised the paper. Y.L. secured the funds to support this research.

Additional Information

Supplementary information accompanies this paper at <http://www.nature.com/srep>

Competing financial interests: The authors declare no competing financial interests.

How to cite this article: Wang, R. *et al.* Novel green tissue-specific synthetic promoters and *cis*-regulatory elements in rice. *Sci. Rep.* **5**, 18256; doi: 10.1038/srep18256 (2015).



This work is licensed under a Creative Commons Attribution 4.0 International License. The images or other third party material in this article are included in the article's Creative Commons license, unless indicated otherwise in the credit line; if the material is not included under the Creative Commons license, users will need to obtain permission from the license holder to reproduce the material. To view a copy of this license, visit <http://creativecommons.org/licenses/by/4.0/>