

# Retrograde stenting of the superior mesenteric artery is the procedure of choice for dissection of the aorta with mesenteric compromise

Dipankar Mukherjee, MD, FACS,<sup>a</sup> Devon T. Collins, MPH, CPH, CHES,<sup>b,c</sup> and Liam Ryan, MD, FACS,<sup>d</sup>  
*Falls Church and Fairfax, Va*

## ABSTRACT

Acute mesenteric ischemia secondary to aortic dissection in type A and type B is a true vascular surgical emergency. Presentation can be subtle or dramatic, and time to revascularization is limited before irreversible changes occur. The literature recognizes the catastrophic consequences of acute superior mesenteric artery occlusion and the need for urgent revascularization, often before central aortic repair in type A. There is no optimal revascularization technique described in this scenario. We present a case of type A aortic dissection with acute dynamic and static superior mesenteric artery occlusion and describe treatment that resulted in successful salvage of the bowel and the patient's life. (*J Vasc Surg Cases and Innovative Techniques* 2019;5:431-4.)

**Keywords:** Mesenteric ischemia; Aortic dissection; Type A; Revascularization; Superior mesenteric artery; Laparotomy

## CASE REPORT

A 36-year-old woman presented to an outside hospital with sudden onset of severe abdominal pain, vomiting, and bowel evacuation. Physical examination demonstrated extreme hypertension; abdominal pain disproportionate to physical findings, which revealed mild tenderness in all quadrants without rebound tenderness; no evidence of lactic acidosis; and marginally elevated white blood cell count. Lower extremity pulse examination revealed diminished femoral and popliteal pulses and absent dorsalis pedis and posterior tibial pulses. Biphasic Doppler signals were heard over both dorsalis pedis and posterior tibial vessels. Renal function appeared intact as evidenced by satisfactory urine output and serum creatinine concentration. Computed tomography angiography (CTA) revealed type A aortic dissection (TAAD) with nearly total obliteration of the true lumen of the thoracoabdominal aorta with occlusion of the origin of the superior mesenteric artery (SMA; [Fig 1](#)). To further demonstrate the obstruction, [Fig 2](#) shows dynamic and static SMA obstruction.

Measures to control blood pressure and anti-impulse therapy were initiated at the outside facility, and the patient was

transferred to our tertiary medical center. At the time of our assessment, 24 hours had elapsed since symptom onset. The patient remained hemodynamically stable; she had a preoperative lactate level of 1.9 mmol/L and an intraoperative white blood cell count of  $19.62 \times 10^9/L$  (only available white blood cell count for this admission), and she reported no chest pain. The complaint of abdominal pain was out of proportion to physical findings. CTA revealed a nearly total occlusion of the true lumen of the thoracoabdominal aorta and SMA. The celiac, SMA, and right renal artery arose from the true lumen of the aorta, and the proximal SMA was thrombosed.

We decided that restoration of mesenteric flow was the priority before TAAD repair. At the time of initial laparotomy, the small bowel was gray in appearance but viable. No pulse in the SMA at the root mesentery was felt; in addition, there was an absence of Doppler signals at the mesenteric border of the small bowel. There was no evidence of mesenteric venous thrombosis. The SMA was exposed at the root of the mesentery, and a distinct transition from the thrombosed vessel proximally to a patent vessel in the mid-SMA was seen. The SMA was accessed in the patent segment of the vessel under direct vision after isolating the SMA through laparotomy. To prevent distal embolization, the SMA was accessed in a segment that was free of thrombus as evidenced by the external appearance of the vessel.

Revascularization of the SMA by retrograde stenting is demonstrated in [Fig 3](#). The SMA was accessed in the patent segment and a 7F sheath placed. The patient was then systemically anticoagulated with intravenous heparin at 100 units per kilogram of body weight. The size of the stent was based on the physician's clinical judgment and the size of the vessel relative to the 7F sheath placed in the SMA. A Glidewire (Terumo Interventional Systems, Somerset, NJ) was advanced under fluoroscopy guidance and entered the true lumen of the dissected aorta. The course of the wire could be followed in the true lumen proximally in the descending thoracic aorta, which followed the

---

From the Vascular Surgery, Department of Surgery,<sup>a</sup> and Cardiac Surgery, Department of Surgery,<sup>d</sup> Inova Fairfax Hospital, Falls Church; the Department of Surgery,<sup>b</sup> Inova Fairfax Hospital, College of Health and Human Services, Fairfax; and the Department of Community and Global Health, George Mason University, Fairfax.<sup>c</sup>

Author conflict of interest: none.

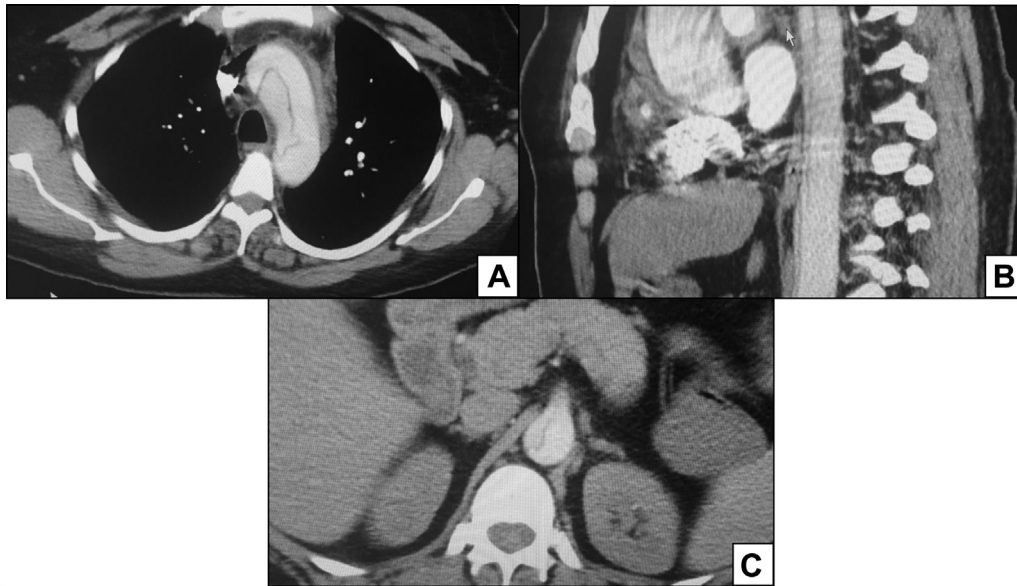
Correspondence: Dipankar Mukherjee, MD, FACS, Department of Surgery, Inova Fairfax Hospital, 3300 Gallows Rd, Falls Church, VA 22042 (e-mail: [muki1953@aol.com](mailto:muki1953@aol.com)).

The editors and reviewers of this article have no relevant financial relationships to disclose per the Journal policy that requires reviewers to decline review of any manuscript for which they may have a conflict of interest.

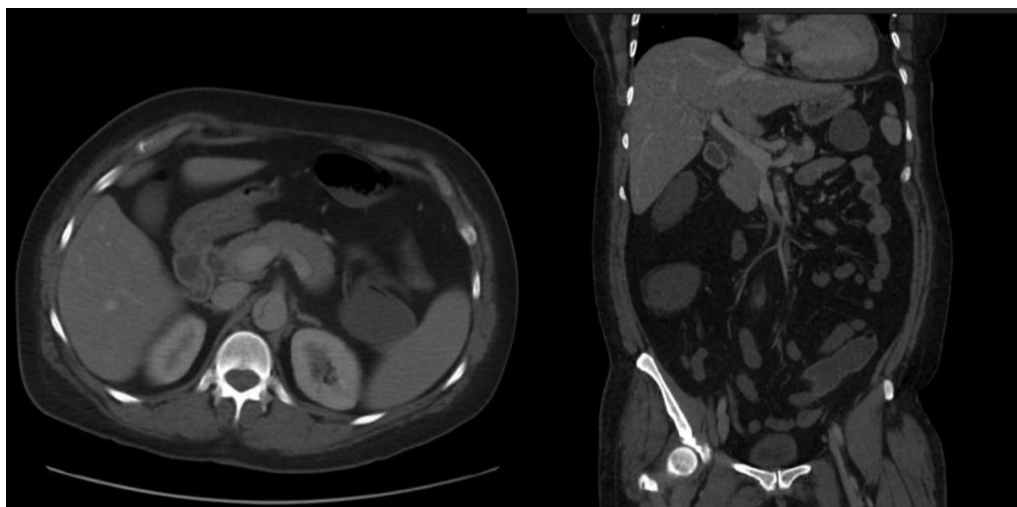
2468-4287

© 2019 Published by Elsevier Inc. on behalf of Society for Vascular Surgery. This is an open access article under the CC BY-NC-ND license (<http://creativecommons.org/licenses/by-nc-nd/4.0/>).

<https://doi.org/10.1016/j.jvscit.2019.06.014>



**Fig 1.** Computed tomography angiography (CTA) imaging on initial assessment of the patient. **A**, Dissection in the aortic arch. **B**, Severely narrowed true lumen in the descending thoracic aorta (coronal). **C**, Dissection extending into the superior mesenteric artery (SMA).



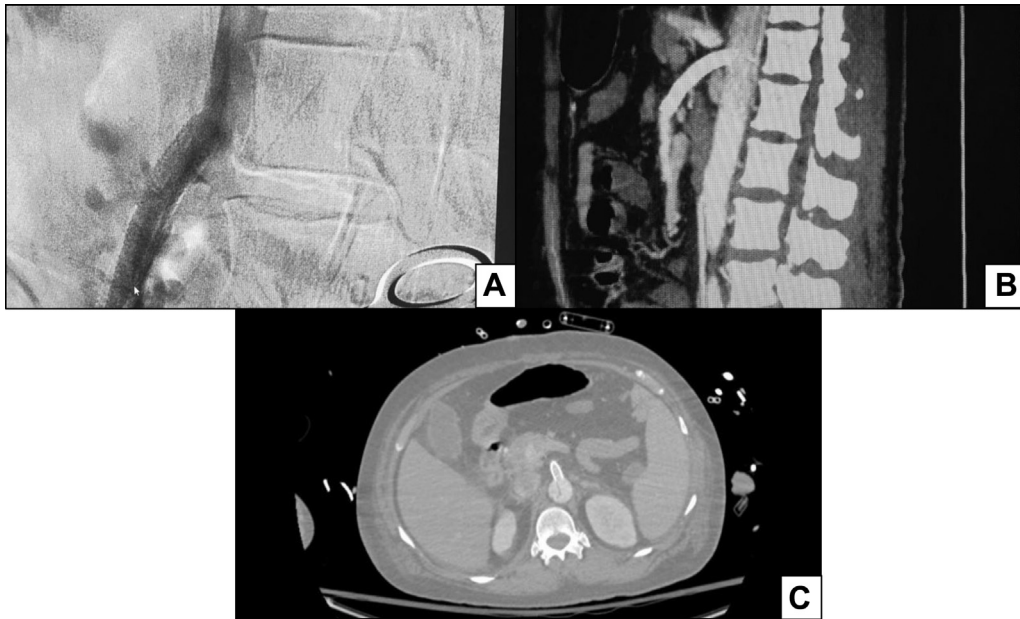
**Fig 2.** Computed tomography angiography (CTA) imaging of both dynamic and static obstruction of the superior mesenteric artery (SMA).

same course as had been noted on CTA. An 8- × 57-mm Express LD (Boston Scientific, Marlborough, Mass) balloon-expandable stent was placed from the origin of the SMA to the patent segment of the vessel. Immediate restoration of pulsatile flow to the bowel was achieved; it turned a normal pink color and had active peristalsis.

On postoperative day 1 (POD 1), the patient returned to the operating room for a second-look laparotomy. The bowel and SMA pulse were normal, and the abdomen was closed. On POD 2, the patient underwent ascending aorta and proximal hemiarch replacement with resuspension of the aortic valve for TAAD. Cardiopulmonary bypass (CPB) was initiated through a 10-mm conduit sewn to the right axillary artery. Cerebral

perfusion on bypass was satisfactory by cerebral oximetry, remaining unchanged before and after establishment of CPB. Flow in the common femoral artery dropped significantly on CPB, suggesting some degree of limb malperfusion. This was corrected after central aortic reconstruction.

The subsequent postoperative course was uneventful except for abdominal pain on POD 1. The abdominal pain prompted another CTA study, which confirmed a widely patent stented SMA with normal bowel perfusion. She was discharged a week later in good condition. Her course at home during the following 3 months has been smooth, with no evidence of mesenteric ischemia. The patient gave consent to publication of this report.



**Fig 3.** Imaging of intraoperative and postoperative findings for revascularization of the superior mesenteric artery (SMA) by retrograde stenting. **A**, Intraoperative angiogram. **B**, Postoperative computed tomography angiography (CTA) image. **C**, True lumen expansion after hemiarch replacement.

## DISCUSSION

Timing of aortic repair in the setting of visceral malperfusion remains a matter of some controversy.<sup>1</sup> Approximately 30% of patients presenting with TAAD and ~20% of patients presenting with type B aortic dissection (TBAD) suffer from malperfusion syndrome.<sup>2,3</sup> The incidence of mesenteric ischemia is ~5.0% to 7.0% in TAAD and TBAD, respectively.<sup>4</sup> Visceral malperfusion is usually associated with renal and limb malperfusion. In individual studies, the incidence of visceral ischemia in complicated TBAD is between 13.8% and 25.0%.<sup>5-12</sup> In-hospital mortality rates specifically from visceral ischemia range between 1.9% and 11.0%.<sup>5,8,9,11,12</sup> The International Registry of Acute Aortic Dissection reported an incidence of visceral ischemia in 7.1% of patients with TBAD, with highly significant difference in in-hospital mortality rate of 30.8% in patients with visceral ischemia vs 9.1% without.<sup>4</sup>

Thoracic endovascular aortic repair has largely replaced open fenestration procedures, which were previously used in malperfusion syndrome resolution. The goal of thoracic endovascular aortic repair is to seal the proximal entry tear, to recapture the true lumen, and to promote false lumen thrombosis. Therefore, the procedure overcomes dynamic obstruction of the branch vessels. When static obstruction of the branch vessels is additionally present, focal stenting or surgical revascularization techniques must be used to relieve ischemia around the branch vessel. Dramatic improvement in outcomes has been reported with endovascular interventions compared with open repair for malperfusion syndromes.<sup>13,14</sup>

Fann et al<sup>13</sup> reported a 31% incidence of malperfusion with a 5% incidence of visceral ischemia in a series of patients with TAAD. Operative mortality was 43% in patients with visceral ischemia.<sup>13</sup> The International Registry of Acute Aortic Dissection reported an incidence of 3.7% of mesenteric ischemia in >1800 patients presenting with TAAD.<sup>14</sup> A mortality rate of 63% vs 23.8% has been reported after central aortic repair in TAAD patients with visceral malperfusion vs those without.<sup>14</sup> For this case, the physicians made the decision to restore mesenteric flow first because of the severe and advanced condition of mesenteric ischemia and the significantly increased risk for overall negative outcomes. In the opinion of the cardiac surgeon involved, in the time that it would take to repair the TAAD, the patient would suffer infarction of the bowel from SMA occlusion and probably die. In situations in which the clinical manifestation of mesenteric ischemia is not at an advanced stage, it would be reasonable to perform repair of the TAAD first and to observe whether this resolves the associated problem of mesenteric ischemia.

Retrograde stenting of the SMA was independently introduced by a single institution and subsequently validated as a treatment option by other reports, including the present author.<sup>15</sup> The distinct advantage is being able to inspect bowel viability and rapidly re-establish mesenteric perfusion. In the absence of prosthetic material for bypass, the risk of graft infection is eliminated, particularly for compromised bowels. The short distance between the access point in the SMA and the point of obstruction gives greater maneuverability and the wire enters the true lumen, which is eccentrically

compromised. The fact that the SMA almost always arises from the true lumen of the aorta speaks to the success of the intervention. In addition, the stent's ability to traverse the length of the obstruction can overcome the component of static obstruction that may be present, as was the case in our patient.

## CONCLUSIONS

We believe from our experience and with the support of other reports that retrograde stenting of the SMA is the preferred approach for patients with visceral malperfusion in the setting of TAAD and TBAD, where there is both dynamic and static obstruction of the SMA.

## REFERENCES

- Hiratzka LF, Bakris GL, Beckman JA, Bersin RM, Carr VF, Casey DE Jr, et al. 2010 ACCF/AHA/AATS/ACR/ASA/SCA/SCAI/SIR/STS/SVM guidelines for the diagnosis and management of patients with thoracic aortic disease. A report of the American College of Cardiology Foundation/American Heart Association Task Force on Practice Guidelines, American Association for Thoracic Surgery, American College of Radiology, American Stroke Association, Society of Cardiovascular Anesthesiologists, Society for Cardiovascular Angiography and Interventions, Society of Interventional Radiology, Society of Thoracic Surgeons, and Society for Vascular Medicine. *J Am Coll Cardiol* 2010;55:e27-129.
- Geirsson A, Szeto WY, Pochettino A, McGarvey ML, Keane MG, Woo YJ, et al. Significance of malperfusion syndromes prior to contemporary surgical repair for acute type A dissection: outcomes and need for additional revascularizations. *Eur J Cardiothorac Surg* 2007;32:255-62.
- Suzuki T, Mehta RH, Ince H, Huseyin I, Ryoza N, Yasunari S, et al. Clinical profiles and outcomes of acute type B aortic dissection in the current era: lessons from the International Registry of Aortic Dissection (IRAD). *Circulation* 2003;108(Suppl 1):II312-7.
- Jonker FH, Patel HJ, Upchurch GR, Williams DM, Montgomery DG, Gleason TG, et al. Acute type B aortic dissection complicated by visceral ischemia. *J Thorac Cardiovasc Surg* 2015;149:1081-6.e1.
- Ehrlich MP, Rousseau H, Heijmen R, Piquet P, Beregi JP, Neinaber CA, et al. Midterm results after endovascular treatment of acute, complicated type B aortic dissection: the Talent Thoracic Registry. *J Thorac Cardiovasc Surg* 2013;145:159-65.
- Feezor RJ, Martin TD, Hess PJ, Beaver TM, Klodell CT, Lee WA. Early outcomes after endovascular management of acute, complicated type B aortic dissection. *J Vasc Surg* 2009;49:561-6; discussion: 566-7.
- Hanna JM, Andersen ND, Ganapathi AM, McCann RL, Hughes GC. Five-year results for endovascular repair of acute complicated type B aortic dissection. *J Vasc Surg* 2014;59:96-106.
- Khoynezhad A, Donayre CE, Omari BO, Kopchok GE, Walot I, White RA. Midterm results of endovascular treatment of complicated acute type B aortic dissection. *J Thorac Cardiovasc Surg* 2009;138:625-31.
- Sobocinski J, Dias NV, Berger L, Midulla M, Hertault A, Sonesson B, et al. Endograft repair of complicated acute type B aortic dissections. *Eur J Vasc Endovasc Surg* 2013;45:468-74.
- Steuer J, Eriksson MO, Nyman R, Björck M, Wanhainen A. Early and long-term outcome after thoracic endovascular aortic repair (TEVAR) for acute complicated type B aortic dissection. *Eur J Vasc Endovasc Surg* 2011;41:318-23.
- Szeberin Z, Dósa E, Fehérvári M, Csobay-Novák C, Pintér N, Entz L. Early and long-term outcome after open surgical suprarenal aortic fenestration in patients with complicated acute type B aortic dissection. *Eur J Vasc Endovasc Surg* 2015;50:44-50.
- Trimarchi S, Jonker FH, Muhs BE, Grassi V, Righini P, Upchurch GR, et al. Long-term outcomes of surgical aortic fenestration for complicated acute type B aortic dissections. *J Vasc Surg* 2010;52:261-6.
- Fann JI, Sarris GE, Mitchell RS, Shumway NE, Stinson EB, Oyer PE, et al. Treatment of patients with aortic dissection presenting with peripheral vascular complications. *Ann Surg* 1990;212:705-13.
- Di Eusanio M, Trimarchi S, Patel HJ, Hutchison S, Suzuki T, Peterson MD, et al. Clinical presentation, management, and short-term outcome of patients with type A acute dissection complicated by mesenteric malperfusion: observations from the International Registry of Acute Aortic Dissection. *J Thorac Cardiovasc Surg* 2013;145:385-90.e1.
- Mukherjee D, Hashemi H, Lee L. Hybrid open and endovascular treatment of type A and type B aortic dissection with mesenteric malperfusion. *Vasc Dis Manag* 2011;8:E105-8.

Submitted Apr 18, 2019; accepted Jun 19, 2019.