

CASE REPORT

Gastric lanthanosis (lanthanum deposition) in an immunosuppressed patient that discontinued lanthanum carbonate seven years ago

Joana M. Ullmann  | Andreas Erbersdobler

Institute of Pathology, University Medicine Rostock, Strepelstr. 14, Rostock, 18057, Germany

Correspondence

Joana M. Ullmann, Institute of Pathology, University Medicine Rostock, Strepelstr. 14, 18057, Rostock, Germany.
Email: joanaMaria.ullmann@med.uni-rostock.de

Funding information

Open Access funding enabled and organized by Projekt DEAL. WOA Institution: N/A Blended DEAL : Projekt DEAL

Abstract

A 72-year-old female patient used the oral phosphate binder lanthanum carbonate for 6 years, before discontinuing it after receiving a pancreas and kidney transplant. Now, 7 years after discontinuation, the patient developed bilious emesis. An upper gastrointestinal endoscopy showed an unspecific gastritis. Biopsies showed subepithelial crystalline deposits consistent with gastric lanthanosis.

KEYWORDS

chronic kidney disease, gastritis, immunosuppressants, kidney transplant, lanthanum carbonate, phosphate binder

1 | INTRODUCTION

Lanthanum carbonate is one of the most potent phosphate binders. It binds dietary phosphate and forms insoluble complexes, which are eliminated through the gastrointestinal tract. It is used to prevent elevation of serum phosphate especially in dialysis-dependent patients.¹ Patients treated with lanthanum carbonate show depositions predominantly in the gastric mucosa.² Those depositions can be seen on gross examination as white spots, ring-like white discoloration, or diffuse white discoloration of the mucosa.³ Scanning electron microscopy and energy dispersive X-ray can be used to further identify lanthanum and phosphate deposition in the mucosa.⁴ The whitish depositions can be seen as early as three months after first taking lanthanum carbonate. They also seem to intensify over time.⁵⁻⁸ There is a positive correlation between the amount of lanthanum intake and its accumulation.⁸ The

depositions seem to persist for a long time.^{9,10} We herein report a case of gastric lanthanosis in a patient with a cessation of lanthanum carbonate over 7 years, supporting the concept of permanent depositions. This could suggest that the depositions are irreversible or at least persist for a long time. It might be possible they could cause symptoms even years after cessation. Clinicians should be aware of this fact and specifically look for specific endoscopic changes and take biopsies if they have a patient with epigastric discomfort and a history of lanthanum medication.

2 | CASE REPORT

A 72-year-old female patient was admitted to the nephrology department due to inadequately controlled arterial hypertension, non-dipper type, and declined function of a renal transplant. The patient has chronic renal failure secondary

This is an open access article under the terms of the Creative Commons Attribution-NonCommercial-NoDerivs License, which permits use and distribution in any medium, provided the original work is properly cited, the use is non-commercial and no modifications or adaptations are made.

© 2021 The Authors. *Clinical Case Reports* published by John Wiley & Sons Ltd.

to type 1 diabetes. The patient began hemodialysis when she was 49 years old. She was treated with the phosphate binder lanthanum carbonate for 6 years, with a daily dose of 2000 mg/day orally. The patient received a combined pancreas and renal transplant at age 55. After the transplantation, immunosuppressive therapy with tacrolimus (0.5 mg/d) and mycophenolate (1000 mg/d) was started, and lanthanum carbonate was no longer taken. The pancreas transplant was explanted due to a T cell-mediated rejection.

During the inpatient stay, the patient developed bilious emesis without enteritis and without signs for an infectious genesis. A sonography of the abdomen was performed. It showed an empty stomach and distended, up to 31 mm, small bowel filled with fluids. An abdominal radiograph showed the bowel to be filled with stool and little gas with few air-fluid levels in the central and right upper abdomen. No free abdominal gas was seen. The patient showed signs of coprostitis, and the diagnosis of a subileus was suspected. An upper gastrointestinal endoscopy was performed the next day. A reddened mucosa and hematin fragments were seen, and a hemorrhagic gastritis was described. Biopsies were taken from the antrum and corpus of the stomach. Histologic evaluation of gastric biopsies showed near normal antral mucosa without significant inflammation. Notably, *Helicobacter*-associated gastritis was not present. Gastric biopsies from the fundus displayed patchy fibrotic areas, preferentially underneath and between the foveolar epithelium. Here, histiocytes containing crystalline material were present without significant infiltrates of lymphocytes, plasma cells, or granulocytes (Figures 1 and 2). The specialized fundic glands were well preserved. The findings were considered typical for lanthanum-induced gastropathy.

After an enema the gastrointestinal symptoms were reduced, so clinically coprostitis was suspected as the cause

of the subileus. During the inpatient stay, the arterial hypertension was successfully managed, and thus, the edema and proteinuria could be reduced.

3 | DISCUSSION

To reduce hyperphosphatemia in dialysis-dependent patients there are different oral phosphate binders available. As compared with other phosphate binders, lanthanum carbonate does not show an increased risk for all-cause mortality or malignancy while maintaining a similar effect of reducing serum phosphate levels. However, 17.8% of patients showed gastrointestinal symptoms that required hospitalization. Unspecific gastrointestinal symptoms, like emesis, are the most common adverse effects. The oral bioavailability is 0.001% and is mostly eliminated through the gastrointestinal tract where it forms insoluble complexes with ingested phosphate.^{11,12} Since 2015, numerous case reports and a few studies showed an association between lanthanum carbonate intake and lanthanum phosphate deposition especially in the gastric mucosa.^{1,3,5,7,9,13-29} Nevertheless, the accumulation mechanism is not entirely understood. Lanthanum carbonate is soluble at resting gastric pH levels, which could be a way of penetrating the gastric mucosa.^{20,30} Chronic kidney disease patients also have a disruption of the epithelial tight junctions in the gastrointestinal tract, which leads to a higher permeability for substances like lanthanum.³¹ Lanthanum carbonate is radiopaque. In abdominal CT, a high-density linear appearance (HD-LA) can be found in 60% - 79% and is seen as a correlate for gastric lanthanum depositions.^{9,20} Yabuki et al. suggest using the HD-LA as a screening criterion.² Whereas Namie et al. described a

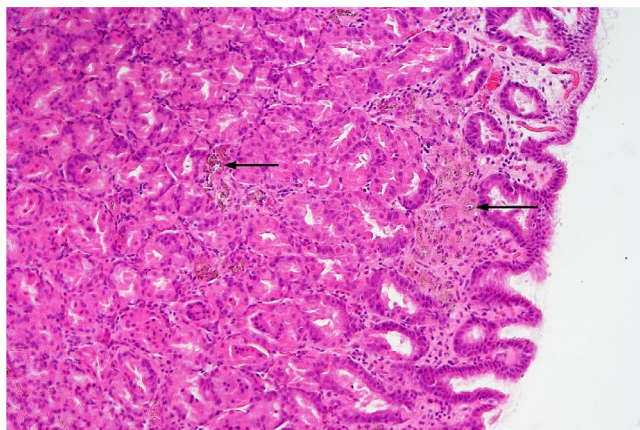


FIGURE 1 Hematoxylin and eosin-stained sections from the fundic mucosa showing lanthanum-induced gastropathy. Arrows showing accumulation of histiocytes containing brownish crystalline material. (Original magnifications: x100)

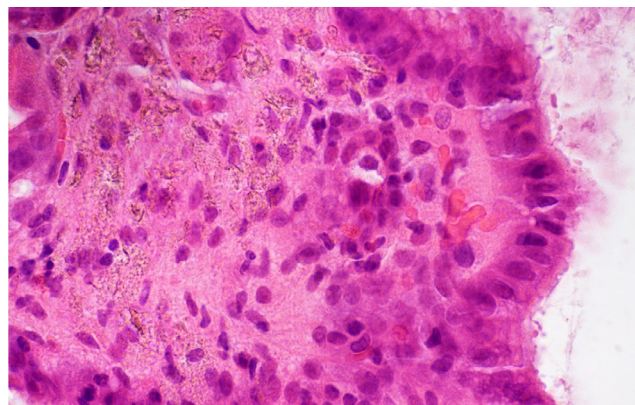


FIGURE 2 Hematoxylin and eosin-stained sections from the fundic mucosa showing lanthanum-induced gastropathy. Numerous histiocytes containing brownish crystalline material can be seen. (Original magnifications: x400)

continuing HD-LA in CT after 8 months of discontinuation, our patient did not show radiopaque objects in an abdominal radiograph, but radiographs may not be as sensitive to slight lanthanum depositions as a CT might be.⁹ Further studies are needed to investigate whether abdominal radiographs and CTs can be used as a screening method.^{3,4,20,21} Endoscopically, the depositions appear as whitish mucosal lesions that vary in shape and size,³³ although Shitomi et al. found that those distinctive endoscopic observations might be difficult to detect in a case with slight depositions.²⁰ This is why Iwamuro et al. suggest taking biopsies also in cases without an endoscopic correlate because they found lanthanum depositions by histology in endoscopically normal mucosa.³²

The histologic correlate to the endoscopically seen whitish discoloration are histiocytes containing brownish foreign bodies in the lamina propria. In an early stage of deposition, the macrophages are arranged singly or in small clusters, whereas in later stages, they diffusely infiltrate the mucosa.^{2,4,20,21} The macrophages in our specimen showed a diffuse infiltration pattern, which fits with a later stage accumulation. Nakamura et al. suggest that M2-polarized macrophages play a crucial role for the clearance of lanthanum.³³ Lanthanum is likely to be resistible to intracellular digestion, so histiocytic activation with following tissue damage is conceivable. The endoscopic features show a significant relationship with the degree of histiocytic infiltration.³⁴ Hattori et al. found that the histiocytic infiltration is specific for lanthanum deposition.⁸ The daily dose of lanthanum carbonate positively correlates with lanthanum deposition in the mucosa.³⁴ Various histopathological changes are described with lanthanum depositions. Most often metaplastic changes, regenerative changes, foveolar hyperplasia, and chronic or active inflammation are described.^{21,27,28} Nishida et al. found no association between the range of atrophic changes and lanthanum depositions.³⁴ Our patient also showed no atrophic changes in the mucosa, which would be concordant with Nishida's observations. Haratake et al. and Valika et al. found that preformed ulcers and underlying pathologies induced by NSAIDs aggravate the entry of lanthanum.^{25,26} As those mucosal changes are often described with a *Helicobacter pylori*-positive gastritis, several authors looked for a relationship between *Helicobacter* infection and lanthanum deposition. Namie et al. suggest that a *Helicobacter pylori* infection may aggravate lanthanum entry through the compromised mucosal barrier.⁹ Shitomi et al. did not find *Helicobacter pylori* infection in patients with a lanthanosis and propose that a *Helicobacter* infection might prevent accumulation of lanthanum in the mucosa through a higher pH and a disturbed histiocytic infiltration in the setting of an inflammation.²⁰ Iwamuro et al. suggest that the gastric body is predominantly affected by lanthanum

deposition, which was also true for our patient, because of the prolonged contact time of lanthanum with the mucosa.²⁴

Another reason why it is important that endoscopist should know about gastric lanthanosis is that it can endoscopically imitate early gastric cancer.²³ Yabuki et al. even described squamous cell carcinoma associated with lanthanum deposition in a rat model. They also found that other mucosal lesions such as chronic inflammation and intestinal metaplasia were more frequent in mucosa with lanthanum depositions. So, they conclude that lanthanum could indirectly induce metaplasia.² Tabushi et al. described the first case of early gastric cancer in association with gastric lanthanosis.²² Shitomi et al. and Takatsuna et al. described gastric cancer in gastric lanthanosis patients, but they found less or any lanthanum depositions in the neoplasia itself. They suggest that the neoplastic mucosa has a malfunctioning absorption mechanism, which leads to lesser lanthanum deposition in that area.^{19,20} With this in mind, it is crucial to know how those depositions develop over time and if they are reversible. Lanthanum depositions seem to gradually expand over time, while taking lanthanum carbonate, in humans and in a rat model.^{2,5} While Rothenberg et al. observed a reduction in symptoms and histological findings after cessation of lanthanum carbonate, Awad et al. found only a reduction of symptoms.^{14,29} Namie et al. and Hoda et al. described persisting depositions after cessation.^{1,9} Hoda et al. reported one patient that received a kidney transplant and discontinued lanthanum carbonate. What this patient has in common with our patient is the discontinuation of lanthanum carbonate due to kidney transplant and continuing lanthanum deposition in the gastric mucosa. We found no other cases in the literature that described a long cessation of lanthanum carbonate with lanthanum deposits. A limitation of our case report is that we have no preceding endoscopies or biopsies, so we do not know how the lanthanum deposition changed over time. We think that the immunosuppressants our patient takes could be involved in the long duration of the deposition. As tacrolimus and mycophenolate inhibit mainly lymphocytes, but also macrophage immune response one could postulate that this leads to a prolonged clearance of lanthanum.^{35,36} But neither the accumulation-, nor the clearance mechanism of lanthanum are understood, so we can only speculate at this moment.

4 | CONCLUSION

It is important to be aware of the diagnosis of gastric lanthanosis and to keep in mind the long persistence of

lanthanum carbonate in the gastric mucosa, which can be detected even years after cessation of lanthanum intake.

ACKNOWLEDGMENTS

No acknowledgments.

AUTHOR CONTRIBUTIONS

Joana Maria Ullmann (joanaMaria.ullmann@med.uni-rostock.de; Universitätsmedizin Rostock, Institute of Pathology, Strepelstraße 14, 18055 Germany) involved in drafting of the article and substantial contributions to the conception of the work. **Prof. Dr. med. Andreas Erbersdobler** (andreas.erbersdobler@med.uni-rostock.de; Universitätsmedizin Rostock, Institute of Pathology, Strepelstraße 14, 18055 Germany) involved in diagnostic responsibility, critical revision of the article, and substantial contributions to the conception of the work.

CONFLICT OF INTEREST

The authors have no conflict of interests to disclose.

ETHICAL APPROVAL

This case report did not include experiments on humans or animals. The patient gave consent for the publication of this case report.

CONSENT

Written informed consent was obtained from the patient for the publication of this case report and accompanying images.

ORCID

Joana M. Ullmann  <https://orcid.org/0000-0002-9369-6451>

REFERENCES

- Hoda RS, Sanyal S, Abraham JL, et al. Lanthanum deposition from oral lanthanum carbonate in the upper gastrointestinal tract. *Histopathology*. 2017;70(7):1072-1078. <https://doi.org/10.1111/his.13178>
- Yabuki K, Haratake J, Tsuda Y, et al. Lanthanum-Induced Mucosal Alterations in the Stomach (Lanthanum Gastropathy): A Comparative Study Using an Animal Model. *Biol Trace Elem Res*. 2018;185(1):36-47. <https://doi.org/10.1007/s12011-017-1235-4>
- Iwamuro M, Urata H, Tanaka T, et al. Lanthanum deposition corresponds to white lesions in the stomach. *Pathol Res Pract*. 2018;214(7):934-939. <https://doi.org/10.1016/j.prp.2018.05.024>
- Iwamuro M, Urata H, Tanaka T, Okada H. Review of the diagnosis of gastrointestinal lanthanum deposition. *World J Gastroenterol*. 2020;26(13):1439-1449. <https://doi.org/10.3748/wjg.v26.i13.1439>
- Ohno A, Miyoshi J, Tanabe H, et al. Gastropathy associated with lanthanum phosphate deposition that was endoscopically tracked for 3 years. A case report. *BMC Gastroenterol*. 2020;20(1):292. <https://doi.org/10.1186/s12876-020-01424-7>
- Yabuki K, Shiba E, Harada H, et al. Lanthanum deposition in the gastrointestinal mucosa and regional lymph nodes in dialysis patients: Analysis of surgically excised specimens and review of the literature. *Pathol Res Pract*. 2016;212(10):919-926. <https://doi.org/10.1016/j.prp.2016.07.017>
- Murakami N, Yoshioka M, Iwamuro M, et al. Clinical Characteristics of Seven Patients with Lanthanum Phosphate Deposition in the Stomach. *Intern Med*. 2017;56(16):2089-2095. <https://doi.org/10.2169/internalmedicine.8720-16>
- Hattori K, Maeda T, Nishida S, et al. Correlation of lanthanum dosage with lanthanum deposition in the gastroduodenal mucosa of dialysis patients. *Pathol Int*. 2017;67(9):447-452. <https://doi.org/10.1111/pin.12564>
- Namie S, Hamabe S, Kawatomi M, et al. Investigation of deposition of lanthanum on gastric mucosa in hemodialysis patients with lanthanum therapy. *Nihon Toseki Igakkai Zasshi*. 2015;48(3):169-177. <https://doi.org/10.4009/jstd.48.169>
- Bücker P, Richter H, Radbruch A, et al. Deposition patterns of iatrogenic lanthanum and gadolinium in the human body depend on delivered chemical binding forms. *J Trace Elem Med Biol*. 2021;63: <https://doi.org/10.1016/j.jtemb.2020.126665>
- Hutchison AJ, Wilson RJ, Garafola S, Copley JB. Lanthanum carbonate: safety data after 10 years. *Nephrology*. 2016;21(12):987-994. <https://doi.org/10.1111/nep.12864>
- Hutchison A, Whelton A, Thadhani R, et al. Long-Term Mortality and Bone Safety in Patients with End-Stage Renal Disease Receiving Lanthanum Carbonate. *Nephron*. 2018;140:265-274. <https://doi.org/10.1159/000492603>
- Makino M, Kawaguchi K, Shimojo H, Nakamura H, Nagasawa M, Kodama R. Extensive lanthanum deposition in the gastric mucosa: The first histopathological report. *Pathol Int*. 2015;65(1):33-37. <https://doi.org/10.1111/pin.12227>
- Rothenberg ME, Araya H, Longacre TA, Pasricha PJ. Lanthanum-Induced Gastrointestinal Histiocytosis. *ACG Case Rep J*. 2015;2(3):187-189. <https://doi.org/10.14309/crj.2015.50>
- Nishikawa Y, Yokoi H, Sakurai T, Horimatsu T, Miyamoto S. Lanthanum deposition in the gastric mucosa in a patient undergoing hemodialysis. *QJM: An Int J Med*. 2018;111(5):347-348. <https://doi.org/10.1093/qjmed/hcx250>
- Galo J, Madrid B, Kupin W. Lanthanum-Induced Radiopaque Intestinal Precipitates: A Potential Cause of Intestinal Foreign Bodies. *Case Rep Nephrol*. 2019;2019:1-3. <https://doi.org/10.1155/2019/1298674>
- Goto K, Ogawa K. Lanthanum Deposition Is Frequently Observed in the Gastric Mucosa of Dialysis Patients With Lanthanum Carbonate Therapy. *Int J Surg Pathol*. 2016;24(1):89-92. <https://doi.org/10.1177/1066896915613434>
- Araki M, Asano K, Taniuchi N. Foreign-body reaction to lanthanum on gastric mucosa. *Clin Exp Nephrol*. 2019;23(4):569-570. <https://doi.org/10.1007/s10157-018-1664-1>
- Takatsuna M, Takeuchi M, Usuda H, Terai S. Case of early-stage gastric cancer identified in the gastric mucosa with lanthanum phosphate deposition. *Endoscopy International Open*. 2019;07(07):E893-E895. <https://doi.org/10.1055/a-0918-5804>
- Shitomi Y, Nishida H, Kusaba T, et al. Gastric lanthanosis (lanthanum deposition) in dialysis patients treated with lanthanum carbonate. *Pathol Int*. 2017;67(8):389-397. <https://doi.org/10.1111/pin.12558>

21. Yabuki K, Haratake J, Hisaoka M. Lanthanum Deposition in the Gastroduodenal Mucosa of Dialysis Patients. *J UOEH*. 2019;41(4):387-395. <https://doi.org/10.7888/juoeh.41.387>
22. Tabuchi M, Takeshima F, Akazawa Y, Nakao K. Early Gastric Cancer with Diffuse Lanthanum Deposition. *Intern Med*. 2019;58:447-448. <https://doi.org/10.2169/internalmedicine.1543-18>
23. Iwamuro M, Urata H, Tanaka T, Okada H. Gastric lanthanum phosphate deposition masquerading as white globe appearance. *Dig Liver Dis*. 2019;51(1):168. <https://doi.org/10.1016/j.dld.2018.07.031>
24. Iwamuro M, Urata H, Tanaka T, et al. Lanthanum Deposition in the Stomach in the Absence of Helicobacter pylori Infection. *Intern Med*. 2018;57:801-806. <https://doi.org/10.2169/internalmedicine.9665-17>
25. Valika AK, Jain D, Jaffe PE, Moeckel G, Brewster UC. A Nodular Foreign Body Reaction in a Dialysis Patient Receiving Long-term Treatment with Lanthanum Carbonate. *Am J Kidney Dis*. 2016;67(1):128-132. <https://doi.org/10.1053/j.ajkd.2015.07.033>
26. Haratake J, Yasunaga C, Ootani A, Shimajiri S, Matsuyama A, Hisaoka M. Peculiar Histiocytic Lesions With Massive Lanthanum Deposition in Dialysis Patients Treated With Lanthanum Carbonate. *Am J Surg Pathol*. 2015;39(6):767-771. <https://doi.org/10.1097/PAS.0000000000000385>
27. Ban S, Suzuki S, Kubota K, et al. Gastric mucosal status susceptible to lanthanum deposition in patients treated with dialysis and lanthanum carbonate. *Ann Diagn Pathol*. 2017;26:6-9. <https://doi.org/10.1016/j.anndiagpath.2016.10.001>
28. Tonooka A, Uda S, Tanaka H, Yao A, Uekusa T. Possibility of lanthanum absorption in the stomach. *Clinical Kidney Journal*. 2015;8(5):572-575. <https://doi.org/10.1093/ckj/sfv062>
29. Awad C, Gilkison K, Shaw E. Lanthanum phosphate binder-induced iron deficiency anaemia. *BMJ Case Rep*. 2019;12(3):e226157. <https://doi.org/10.1136/bcr-2018-226157>
30. Damment SJP, Pennick M. Clinical Pharmacokinetics of the Phosphate Binder Lanthanum Carbonate. *Clin Pharmacokinet*. 2008; 47:553-63.
31. Vaziri ND, Yuan J, Nazertehrani S, Ni Z, Liu S. Chronic Kidney Disease Causes Disruption of Gastric and Small Intestinal Epithelial Tight Junction. *Am J Nephrol*. 2013;38(2):99-103. <https://doi.org/10.1159/000353764>
32. Iwamuro M, Urata H, Tanaka T, Kawano S, Kawahara Y, Okada H. Frequent Involvement of the Duodenum with Lanthanum Deposition: A Retrospective Observational Study. *Intern Med*. 2019;58:2283-2289. <https://doi.org/10.2169/internalmedicine.2398-18>
33. Nakamura T, Tsuchiya A, Kobayashi M, Naito M, Terai S. M2-polarized macrophages relate the clearance of gastric lanthanum deposition. *Clin Case Rep*. 2019;7(3):570-572. <https://doi.org/10.1002/ccr3.1989>
34. Nishida S, Ota K, Hattori K, et al. Investigation of the clinical significance and pathological features of lanthanum deposition in the gastric mucosa. *BMC Gastroenterol*. 2020;20(1): <https://doi.org/10.1186/s12876-020-01545-z>
35. Staatz CE, Tett SE. Pharmacology and toxicology of mycophenolate in organ transplant recipients: an update. *Arch Toxicol*. 2014;3:1351-1389. <https://doi.org/10.1007/s00204-014-1247-137>
36. The US. Multicenter FK506 Liver Study Group. A Comparison of Tacrolimus (FK 506) and Cyclosporine for Immunosuppression in Liver Transplantation. *N Engl J Med*. 1994;331(17):1110-1115. <https://doi.org/10.1056/nejm199410273311702>

How to cite this article: Ullmann JM, Erbersdobler A. Gastric lanthanosis (lanthanum deposition) in an immunosuppressed patient that discontinued lanthanum carbonate seven years ago. *Clin Case Rep*. 2021;9:e05075. <https://doi.org/10.1002/ccr3.5075>