



ASO VISUAL ABSTRACT

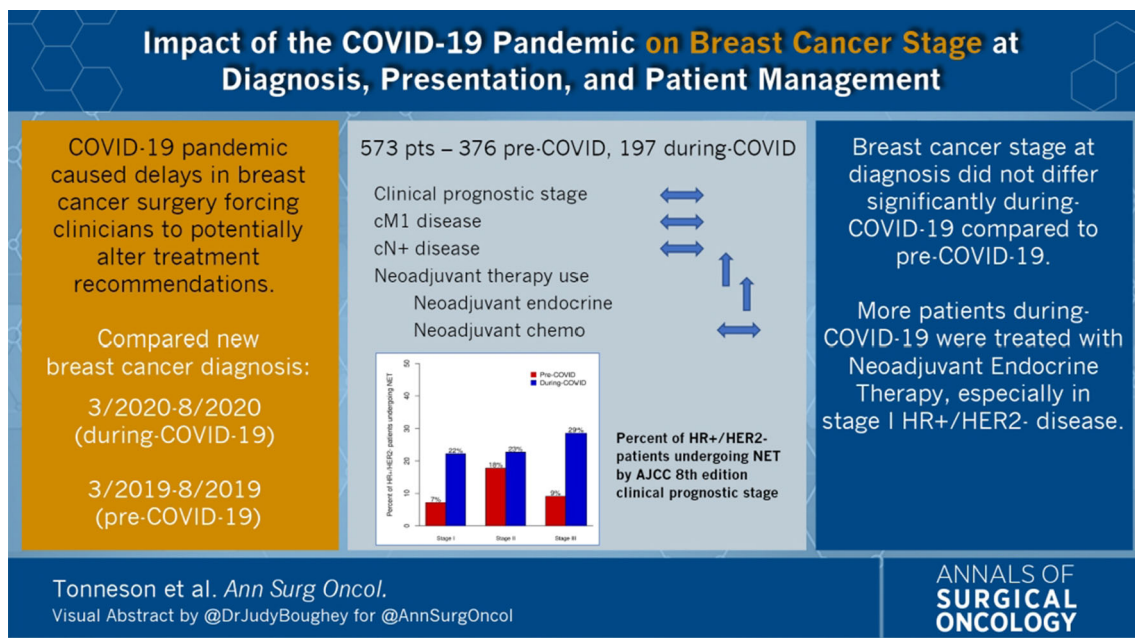
ASO Visual Abstract: Impact of the COVID-19 Pandemic on Breast Cancer Stage at Diagnosis, Presentation, and Patient Management

Jennifer E. Tonneson, MD, FACS¹, Tanya L. Hoskin, MS², Courtney N. Day, BS², Diane M. Durgan, MD, MPH¹, Christina A. Dilaveri, MD³, and Judy C. Boughey, MD, FACS¹

¹Division of Breast and Melanoma Surgical Oncology, Department of Surgery, Mayo Clinic, Rochester, MN; ²Division of Clinical Trials and Biostatistics, Mayo Clinic, Rochester, MN; ³Division of General Internal Medicine, Department of Medicine, Mayo Clinic, Rochester, MN

The COVID-19 pandemic forced clinicians to change the way that they thought about breast cancer management when screening programs were temporarily suspended and elective procedures postponed. This paper (<https://doi.org/10.1245/s10434-021-11088-6>) examined stage at breast cancer diagnosis and subsequent breast cancer

management comparing patients presenting before and during the COVID-19 pandemic. We found that stage at diagnosis, method of cancer detection, and tumor biology did not differ before or during the COVID-19 pandemic, but that use of neoadjuvant endocrine therapy increased



significantly, with significant increased NET use in stage I HR+/HER2- patients and nonsignificant increases in stage II and III HR+/HER2- patients.

DISCLOSURES Dr. Boughey receives research funding from Lilly for a clinical trial and is on a DSMB for Cairns Surgical.

Publisher's Note Springer Nature remains neutral with regard to jurisdictional claims in published maps and institutional affiliations.