

Original Article



# Trends of uterine carcinosarcoma in the United States

Koji Matsuo ,<sup>1,2</sup> Malcolm S. Ross ,<sup>3</sup> Hiroko Machida ,<sup>4</sup> Erin A. Blake ,<sup>1</sup>  
Lynda D. Roman <sup>1,2</sup>

<sup>1</sup>Division of Gynecologic Oncology, Department of Obstetrics and Gynecology, University of Southern California, Los Angeles, CA, USA

<sup>2</sup>Norris Comprehensive Cancer Center, University of Southern California, Los Angeles, CA, USA

<sup>3</sup>Division of Gynecologic Oncology, Department of Obstetrics and Gynecology, Magee-Womens Hospital, University of Pittsburgh, Pittsburgh, PA, USA

<sup>4</sup>Department of Obstetrics and Gynecology, Tokai University School of Medicine, Isehara, Japan

OPEN ACCESS

Received: Nov 19, 2017

Accepted: Dec 8, 2017

Correspondence to

Koji Matsuo

Division of Gynecologic Oncology, Department of Obstetrics and Gynecology, University of Southern California, 2020 Zonal Avenue, IRD520, Los Angeles, CA 90033, USA.  
E-mail: koji.matsuo@med.usc.edu

Copyright © 2018. Asian Society of Gynecologic Oncology, Korean Society of Gynecologic Oncology

This is an Open Access article distributed under the terms of the Creative Commons Attribution Non-Commercial License (<https://creativecommons.org/licenses/by-nc/4.0/>) which permits unrestricted non-commercial use, distribution, and reproduction in any medium, provided the original work is properly cited.

ORCID iDs

Koji Matsuo

<https://orcid.org/0000-0002-6232-8701>

Malcolm S. Ross

<https://orcid.org/0000-0001-7696-0663>

Hiroko Machida

<https://orcid.org/0000-0003-2252-3577>

Erin A. Blake

<https://orcid.org/0000-0002-5097-4837>

Lynda D. Roman

<https://orcid.org/0000-0002-6960-4414>

Funding

This research was supported by Ensign Endowment for Gynecologic Cancer Research (K.M.).

## ABSTRACT

**Objective:** Uterine carcinosarcoma (UCS) is a rare type of high-grade endometrial cancer (EC) that has been understudied with population-based statistics due to its rarity. This study examined temporal trends in the proportion of UCS among women with EC.

**Methods:** This is a retrospective observational study examining The Surveillance, Epidemiology, and End Results program between 1973–2013. Primary EC cases were eligible for analysis, and a time-specific proportion of UCS was examined during the study period.

**Results:** UCS was seen in 11,000 (4.7%) women among 235,849 primary EC cases. Mean age at UCS diagnosis increased from 65.9 to 71.7 years between 1973–1989 and then decreased from 71.7 to 67.0 years between 1989–2013 (both,  $p < 0.001$ ). Proportion of Black women significantly increased during the study period (11.9%–20.0%,  $p < 0.001$ ), whereas the proportion of White women decreased from 86.0% to 60.5% between 1987–2013 ( $p < 0.001$ ). There was a significant increase in the proportion of UCS among primary EC from 1.7% to 5.6% between 1973–2013 ( $p < 0.001$ ). Among type II ECs ( $n = 76,118$ ), the proportion of UCS also increased significantly from 6.0% to 17.5% between 1973–2013 ( $p < 0.001$ ). An increasing proportion of UCS was seen in both young and older women but the magnitude of interval increase was larger in the older age group between 1973–2013 (<60 years, from 1.3% to 3.3%,  $p < 0.001$ ; and  $\geq 60$  years, from 2.6% to 7.0%,  $p < 0.001$ ).

**Conclusion:** Our study demonstrated that the proportion of UCS has significantly increased among EC, accounting for more than 5% in recent years.

**Keywords:** Carcinosarcoma; Trends; Endometrial Neoplasms

## INTRODUCTION

Uterine carcinosarcoma (UCS) is classified as a high-grade endometrial carcinoma [1]. UCS is histologically composed of 2 cell type components: a carcinoma and a sarcoma [1]. Recent leading-opinion on clonal origin favors that UCS is as a metaplastic tumor with the sarcoma component being dedifferentiated from the carcinoma component [2,3]. More recent comprehensive high throughput analyses not only showed similar gene signatures to endometrial cancer (EC) but also demonstrated strong evidence of an epithelial-mesenchymal transition in UCS [4,5].

**Conflict of Interest**

No potential conflict of interest relevant to this article was reported.

**Author Contributions**

Conceptualization: M.K.; Data curation: M.H.; Formal analysis: M.H.; Funding acquisition: M.K.; Investigation: M.K., R.M.S., M.H., B.E.A., R.L.D.; Methodology: M.K., M.H.; Project administration: M.K.; Resources: M.H., M.K.; Software: M.H.; Supervision: M.K.; Validation: M.H.; Visualization: M.H.; Writing - original draft: M.K.; Writing - review & editing: M.K., R.M.S., M.H., B.E.A., R.L.D.

UCS is characterized by older age of onset, typically in the 7th decade of life [6]. Black women have a disproportionately increased risk compared to other races/ethnicities [6,7]. Exposure to tamoxifen and pelvic radiation are recognized risk factors for UCS [8-10]. When compared to other types of high-grade endometrial carcinoma or even uterine sarcoma, UCS is more likely to present with metastatic disease especially in lymph nodes, and is associated with worse survival outcomes [11-13]. The carcinoma component is the main prognostic indicator in UCS but the sarcoma component also has a major impact on survival and treatment response [14,15].

UCS is considered a rare tumor. The incidence of UCS in the general population ranges from 5.1 to 6.9 per 1,000,000 person-years [16]. UCS comprises less than 5% of uterine tumors [1,17,18]; however, this statistic was based on studies mixed with uterine sarcoma or conducted several decades ago. Due to its rarity, UCS has been understudied, and recent population-based statistics solely in the EC population are missing. Given a recent change in demographics in the U.S., providing trends and changes in the characteristics of UCS will be useful in understanding its epidemiology of this disease. The objective of this study is to examine temporal trends in the proportion of UCS among women with EC.

## MATERIALS AND METHODS

### 1. Data source

This is a retrospective observational study examining The Surveillance, Epidemiology, and End Results (SEER) program between 1973 and 2013. The SEER program is a population-based database launched in 1973 that is supported and managed by the National Cancer Institute in the U.S. [19]. SEER covers approximately 27.8% of the US population from 11 states and 7 areas. SEER data are publicly available and deidentified. Data entry into the tumor registry was performed by certified trained personnel with vigorous quality control [20]. The current study was deemed exempt by the University of Southern California Institutional Review Board.

### 2. Eligibility

The SEER\*Stat 8.3.2 (IMS Inc., Calverton, MD, USA) was used to extract the dataset for the SEER18 covering cases between 1973 and 2013. Cases were identified by searching “Uteri Corpus” limited to malignancy and female sex. Primary EC cases were eligible for the analysis, and uterine sarcoma and metastatic tumor to the uterus from another origin were excluded from the analysis. The 3rd edition of International Classification of Diseases for Oncology site/histology validation and World Health Organization (WHO) histological classification codes for 8950-3, 8951-3, 8980-3, and 8981-3 were used for the surrogates for UCS cases.

### 3. Clinical information

Among eligible cases, calendar year of diagnosis (1973–2013), age at diagnosis (continuous), race (White, Black, Hispanic, Asian, and others), marital status (single, married, divorced, and widow), registry area (west, central, and east), histology types (endometrioid, serous, clear cell, mucinous, mixed, carcinosarcoma, squamous, and undifferentiated), and tumor grade (1, 2, and 3) were abstracted from the database.

#### 4. Study definition

Based on a prior study, an age cutoff of 60 years was used to group young women (<60 years) and old women ( $\geq 60$  years) for our analysis [14]. Type II EC was defined as grade 3 endometrioid, serous, clear cell, mucinous, mixed, carcinosarcoma, squamous, and undifferentiated types. Whereas, type I EC was defined as grade 1–2 endometrioid types as described previously [21,22].

#### 5. Statistical consideration

The primary interest of analysis was to examine temporal trends in the proportion of UCS among primary EC. The secondary interest of the analysis was to examine the temporal trends based on age, cancer type, and race. In addition, trends in age at UCS diagnosis were examined.

The Joinpoint Regression Program 4.2.0.2 provided by the National Cancer Institute was used for the temporal trends analysis to determine potential changes in temporal trends [23]. Time duration was grouped every calendar year or every year of patient age, and the time-specific proportion of UCS was examined during the study period. A linear segmented regression test was utilized for the model, and log-transformation was performed to determine annual percent change (APC) of the slope with 95% confidence interval (CI) [24]. All hypotheses were 2-tailed, and a p-value of less than 0.05 was considered statistically significant.

## RESULTS

### 1. Patient demographics

During the study period, there were 246,737 cases of uterine malignancies recorded in the tumor registry. Of those, 10,578 cases of uterine sarcoma and 309 cases of metastatic tumors to the uterus from other origin were excluded from the analysis. The final study population comprised 235,849 cases of primary EC.

UCS were seen in 11,000 (4.7%, 95% CI=4.6, 4.8) women during the study period. The patient demographics of UCS are shown in **Table 1**. Mean age at diagnosis was 68.2 years, with 8,603 (78.2%) women aged 60 years or older. When compared to those who had other histology types, women with UCS were more likely to be older, Black, live in the eastern U.S., and divorced/widowed (all,  $p < 0.001$ ). Uterine UCS was more likely to present with distant metastatic disease than other histology types (27.6% vs. 8.0%,  $p < 0.001$ ).

### 2. Trends in age at cancer diagnosis

Because age represents a key risk factor for UCS, trends in age at diagnosis were examined during the study period (**Fig. 1**). Mean age at UCS diagnosis increased from 65.9 to 71.7 years between 1973 and 1988 (APC=0.50; 95% CI=0.37, 0.62;  $p < 0.001$ ) and then decreased from 71.7 to 67.0 years between 1988 and 2013 (APC=-0.19; 95% CI=-0.26, -0.13,  $p < 0.001$ ). Mean age at diagnosis was also examined in the entire cohort of primary EC (**Fig. 1**). Similar to the UCS cohort, there seems to be a recent decrease in the mean age at diagnosis in the entire cohort of primary EC from 65.3 to 62.6 years between 1993 and 2007 (APC=-0.33; 95% CI=-0.38, -0.28;  $p < 0.001$ ).

**Trends of uterine carcinosarcoma**

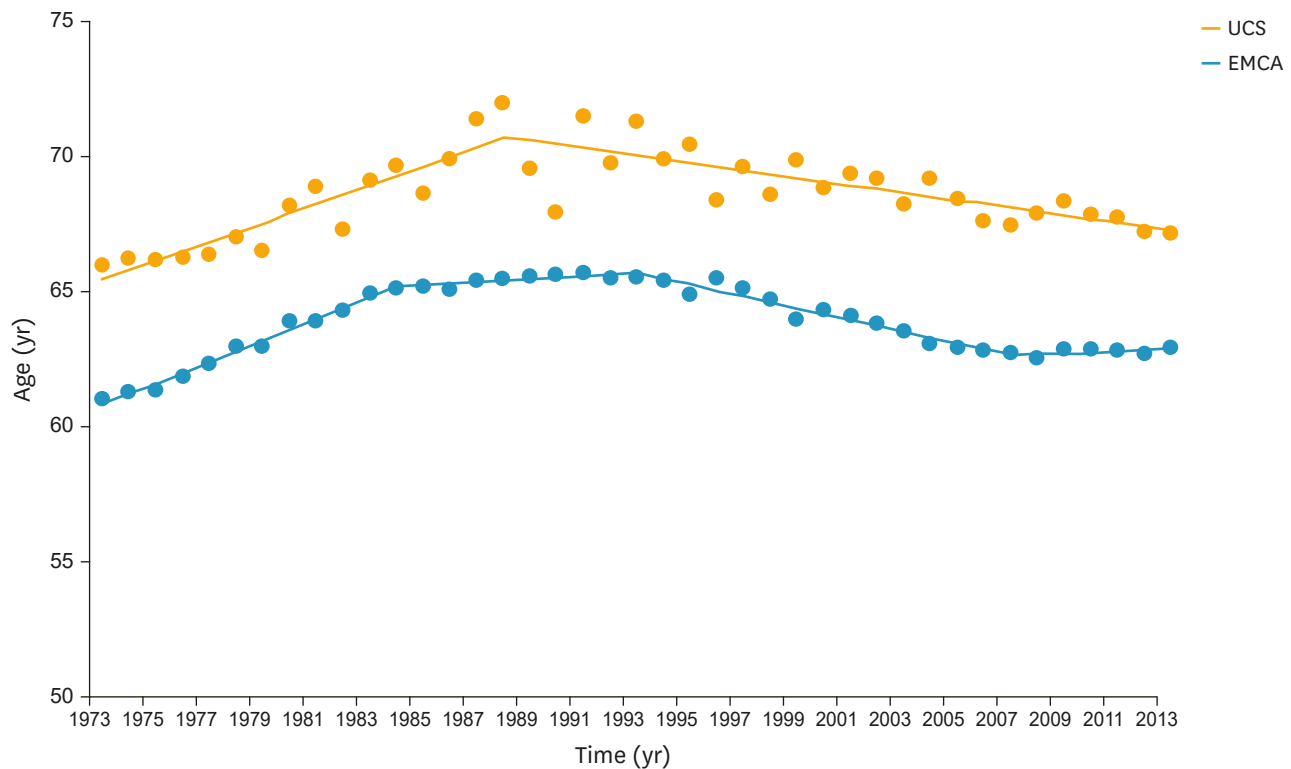
**Table 1.** Patient demographics of UCS

Characteristic	UCS	Other histology types	p-values*	Other type II cancers	p-values†
No. of patients	11,000	224,849		65,118	
Age (yr)			<0.001		<0.001
Mean±SD	68.2±11.5	63.1±12.5		65.5±12.1	
<60	2,397 (21.8)	88,058 (39.2)		20,088 (30.8)	
≥60	8,603 (78.2)	136,791 (60.8)		45,030 (69.2)	
Race			<0.001		<0.001
White	7,322 (66.6)	176,284 (78.4)		48,826 (75.0)	
Black	2,145 (19.5)	15,268 (6.8)		6,673 (10.2)	
Hispanic	838 (7.6)	17,212 (7.7)		5,006 (7.7)	
Asian	532 (4.8)	11,717 (5.2)		3,526 (5.4)	
Others	163 (1.5)	4,368 (1.9)		1,087 (1.7)	
Registry			<0.001		<0.001
West	5,335 (48.5)	115,863 (51.5)		34,047 (52.3)	
Central	2,471 (22.5)	53,001 (23.6)		15,222 (23.4)	
East	3,194 (29.0)	55,985 (23.6)		15,849 (24.3)	
Marital status			<0.001		<0.001
Single	1,556 (14.1)	32,410 (14.4)		9,150 (14.1)	
Married	4,821 (43.8)	116,913 (52.0)		31,760 (48.8)	
Divorced	1,021 (9.3)	19,279 (8.6)		5,668 (8.7)	
Widow	3,042 (27.7)	43,460 (19.3)		15,105 (23.2)	
Others	560 (5.1)	12,787 (5.7)		3,435 (5.2)	
Stage			<0.001		<0.001
Localized	4,346 (39.5)	160,897 (71.6)		35,527 (54.6)	
Regional	3,120 (28.4)	34,979 (15.6)		15,955 (24.5)	
Distant	3,036 (27.6)	17,912 (8.0)		11,258 (17.3)	
Unstaged	498 (4.5)	11,061 (4.9)		2,378 (3.7)	

Percent per column. Student's t-test or  $\chi^2$  test for p-values. Data shown are number (%) not otherwise specified.

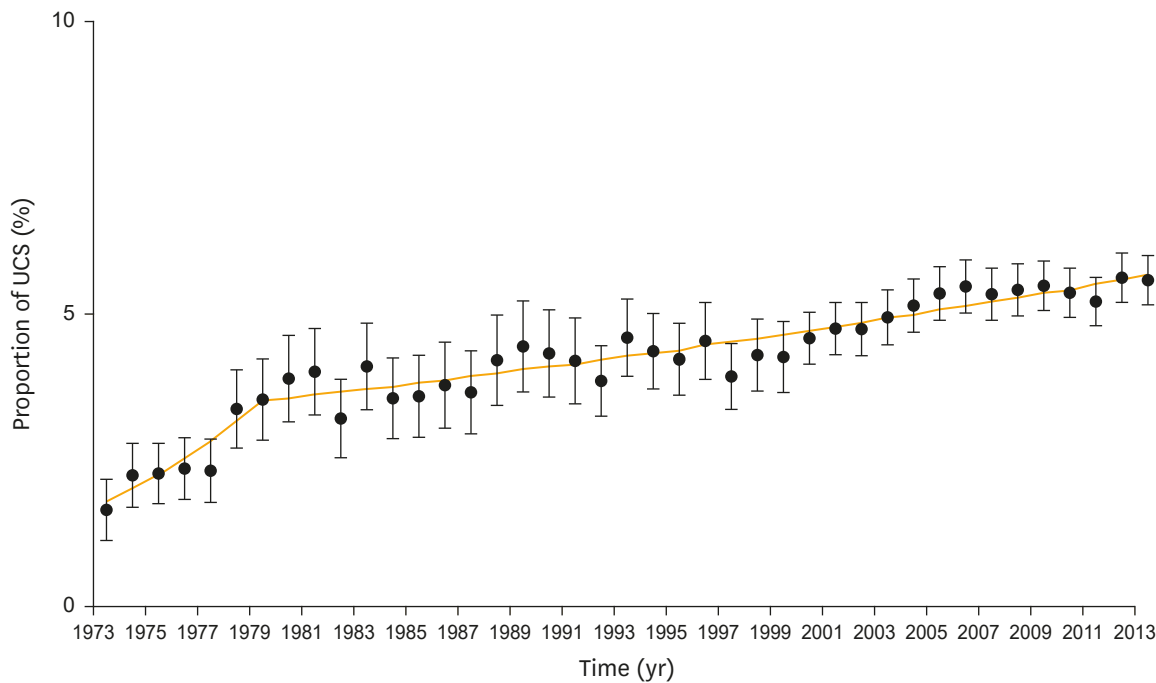
SD, standard deviation; UCS, uterine carcinosarcoma.

\*Comparison between UCS vs. other histology types; †Comparison between UCS vs. other type II cancers.



**Fig. 1.** Trends of age at cancer diagnosis. Y-axis is truncated to 50%–75%. The yellow and blue lines are modeled estimates and the dots represent actual observed values.

EC, endometrial cancer; UCS, uterine carcinosarcoma.



**Fig. 2.** Trends of UCS (among all histology types). Proportion of UCS per calendar year is shown for all primary EC. The yellow line is modeled estimates and dot with 95% CI are actual observed values.  
CI, confidence interval; EC, endometrial cancer; UCS, uterine carcinosarcoma.

### 3. Trends of UCS (all histology types)

We first examined the temporal trends of the proportion of UCS in the entire cohort of primary EC (n=235,849). In the past 4 decades, there was a significant increase in the proportion of UCS throughout the study period as demonstrated in **Fig. 2**. These significant increases were seen between 1973 and 1979 from 1.7% to 3.5% (APC=11.6; 95% CI=9.6, 13.6; p<0.001) and between 1979 and 2013 from 3.5% to 5.6% (APC=1.4; 95% CI=1.4, 1.5; p<0.001).

### 4. Trends of UCS in type II cancer

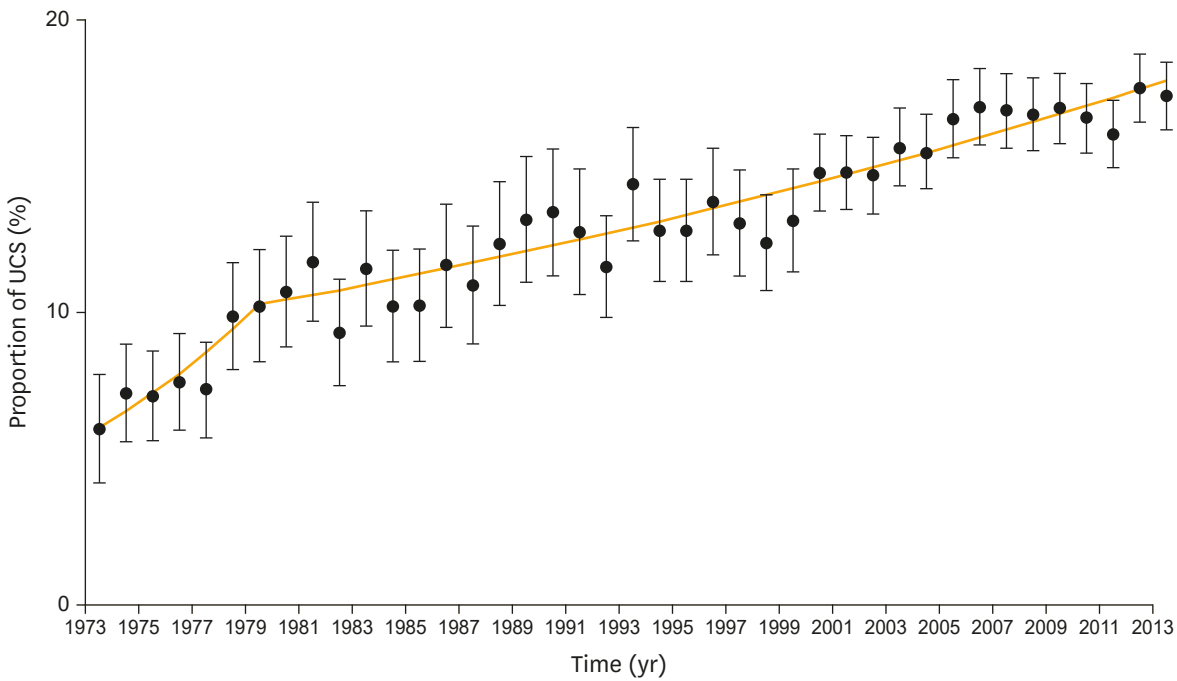
Because UCS is considered a high-grade EC, we compared the carcinosarcoma cases to other type II ECs, including grade 3 endometrioid, serous, clear cell, mucinous, mixed, carcinosarcoma, and undifferentiated types (n=65,118). Compared to other histology types among type II EC, women with UCS were more likely to be old, Black, live in the eastern U.S., and be divorced/widowed (**Table 1**).

Among type II ECs, the proportion of UCS has increased significantly throughout the study duration as shown in **Fig. 3**. Specifically, there was an increase in the proportion of UCS from 6.0% to 10.2% between 1973 and 1979 (APC=9.2; 95% CI=7.2, 11.2; p<0.001). Additionally, there was a significant increase in the proportion of UCS from 10.2% to 17.5% between 1979 and 2013 (APC=1.7; 95% CI=1.6, 1.7; p<0.001).

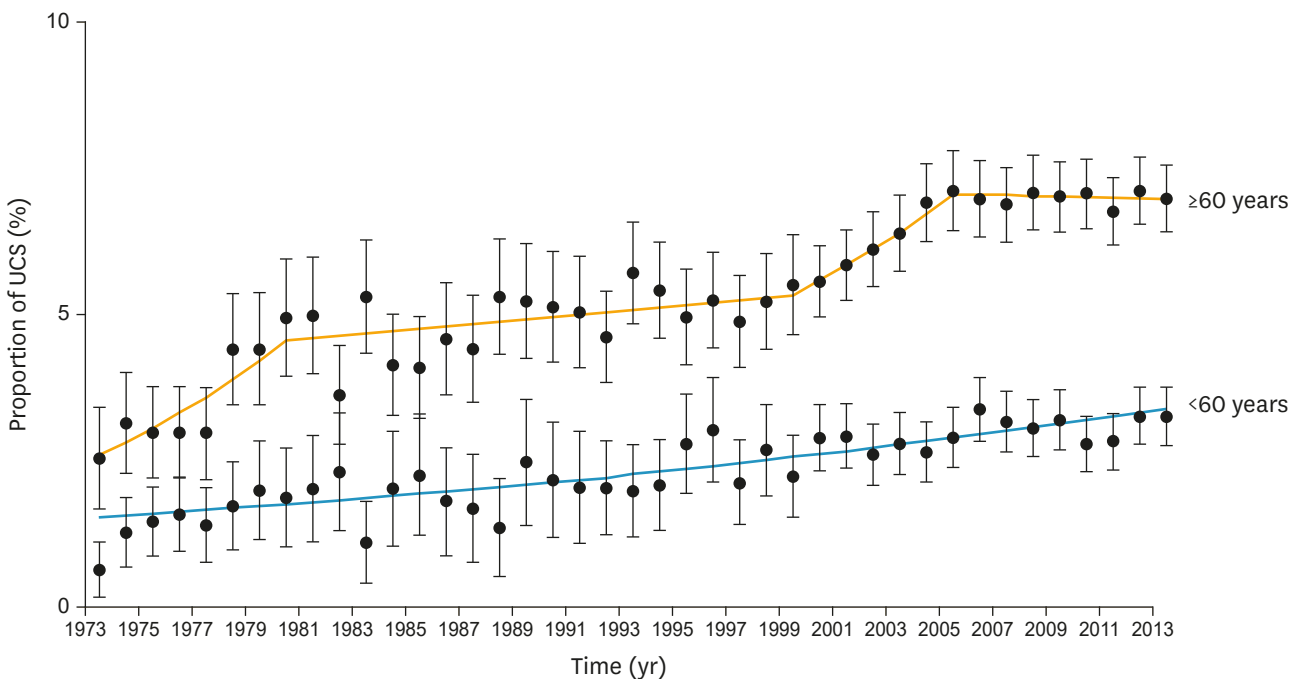
### 5. Trends of UCS in young or old women

UCS is a disease of the elderly. Thus, we examined the trends of UCS in young and old women. An increasing proportion of UCS among primary EC was seen in both young and older women as shown in **Fig. 4**. Among women aged <60 years (n=90,455), the increase in the proportion of UCS was steady throughout the study period without flexion points in temporal trends from 1.3% in 1973 and 3.3% in 2013 (APC=2.02; 95% CI=1.63, 2.40;

Trends of uterine carcinosarcoma

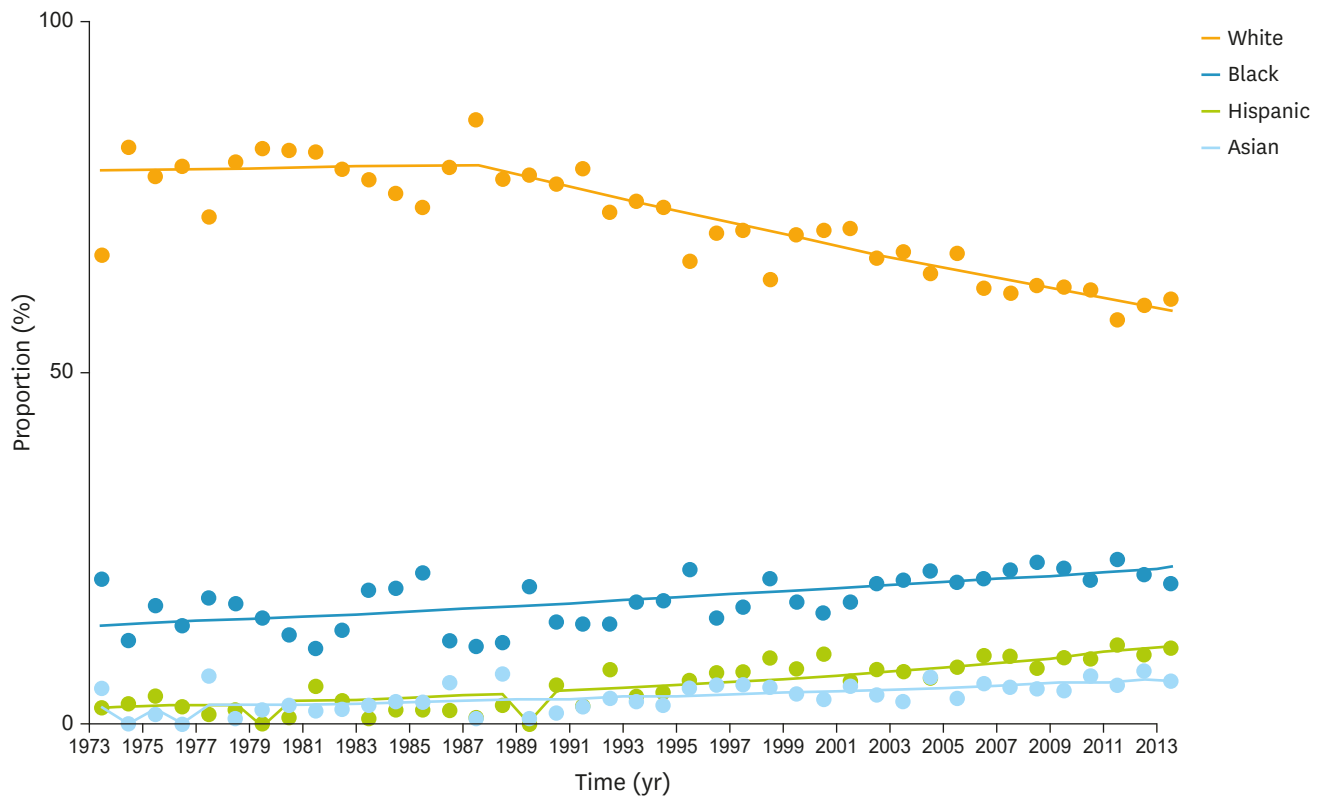


**Fig. 3.** Trends of UCS (among type II histology). Proportion of UCS per calendar year is shown for all primary EC. The yellow line is modeled estimates and dot with 95% CI are actual observed values. CI, confidence interval; EC, endometrial cancer; UCS, uterine carcinosarcoma.



**Fig. 4.** Trends of UCS (age stratification). Proportion of UCS per calendar year is shown for age stratification. The yellow and blue lines are modeled estimates and dot with 95% CI are actual observed values. CI, confidence interval; UCS, uterine carcinosarcoma.

$p < 0.001$ ). Among women aged  $\geq 60$  years ( $n=145,394$ ), there was a significant increase in the proportion of UCS during the study period but the magnitude of increase was larger in the older women compared to the younger women (2.6% in 1973 to 7.0% in 2013).



**Fig. 5.** Trends of race among UCS. Proportion of race per calendar year is shown. The 4 lines are modeled estimates and the dots for actual observed values. UCS, uterine carcinosarcoma.

### 6. Trends per race

Because race is a salient risk factor for UCS, we examined trends of race during the study period (**Fig. 5**). Among women with UCS, there was a significant decrease in the proportion of White women during the study period from 86.0% to 60.5% between 1987 and 2013 (APC=-1.16; 95% CI=-1.3, -0.99; p<0.001). Conversely, there was a significant increase in proportion of Black women during the study period from 11.9% to 20.3% between 1974 and 2013 (APC=1.15; 95% CI=0.76, 1.54; p<0.001). Similar trends were seen in the entire cohort of primary EC, with a steady decrease in the proportion of White women from 90.6% to 67.5% and an increase in the proportion of Black women from 2.9% to 10.0% between 1973 and 2013.

## DISCUSSION

Our study demonstrated that the proportion of carcinosarcoma among ECs has significantly increased over time in the U.S. This increase in proportion of UCS was also seen among women with high-grade EC. Possible causalities to link these trends include demographic changes in age, race, and the obesity in the U.S.

This study found that there is a marked change in the race distribution among women with UCS, with a decrease in the proportion of White women and an increase in the proportion of Black women. This trend was also seen in the entire EC cohort. Because Black women have substantially increased risks of developing UCS compared to other races or ethnicities [6,7], this



increase in the proportion of Black women with UCS may be due to an increase in the proportion of UCS in EC.

Some may argue that our observation of racial distribution changes may not reflect the general population because this tumor registry, SEER program, only covers less than one third of the U.S. population and is composed of unique geographic areas related to racial distribution [19]. However, a recent U.S. census indicates a similar trend in racial distribution in this country as a population, with a decrease in White proportion and an increase in Black proportion [25]. Therefore, it is most likely that the racial distribution changes seen in the SEER program reflect the demographic changes in the U.S. population.

UCS is generally a disease of the elderly, leading us to postulate that the increase in the proportion of UCS may be due to the increase in the number of older women in the U.S. society [26]. In fact, the age at diagnosis of UCS increased significantly until the late-1980s, and the proportion of UCS continues to increase in older women. However, in the past few decades, the age of diagnosis for women with UCS became younger. Moreover, an increasing proportion of UCS within ECs was also seen in the younger age group, suggesting other factors such as obesity as a cause for the increasing proportion of UCS.

The obese population continues to increase in the U.S. In the year 2013–2014, more than one third of the adult population was estimated to be obese (37.7%). This has increased by more than several percentage points since the year 1999–2000 (30.5%) [27]. We thus speculate that an increasing obese population in the U.S. may be one possible cause linking these temporal trends of recent younger age at diagnosis of UCS and an increase in proportion of UCS among young women.

Obesity is known to be a state of chronic systemic inflammation related to the excess adipose tissues [28]. Pro-inflammatory cytokines related to obesity are associated with an increased risk of EC [28]. Inflammation increases the epithelial-mesenchymal transition in tumor via induction of adhesion molecules and transcription factors [29–31]. Free fatty acid related to obesity can be an alternative pathway inducing the epithelial-mesenchymal transition in tumors [32]. The epithelial-mesenchymal transition is a unique characteristic in UCS [1]. Recent high-throughput molecular analyses have shown that UCS not only has genetic similarities to endometrial carcinoma but also has increased expression of epithelial-mesenchymal transition markers [4,5]. Therefore, it may be speculated that obesity not only increases the risk of EC but also increases the epithelial-mesenchymal transition in endometrial tumors to further form UCS.

Obesity is also a risk factor for developing breast cancer [33], for which tamoxifen is commonly used as an adjuvant therapy. Tamoxifen use is known to be associated with an increased risk of UCS [8–10]. There is a global increase in the incidence of breast cancer [34], with a concordant increase in tamoxifen use [35]. These increases in the rate of tamoxifen use may be associated with the increased incidence of UCS.

UCS has been previously considered as a member of uterine sarcoma until recently, and thus, this may possibly attribute to the increase in proportion of UCS. However, when trends in the proportion of uterine sarcoma among uterine malignancies were examined in a post hoc analysis, there was no counter-decrease in the proportion of uterine sarcoma among uterine malignancies during the study period (3.8% in 1973 and 4.0% in 2013). Therefore, misclassification between these 2 categories is unlikely.



Strengths of this study are that this is likely the first study demonstrating increasing trends of UCS by utilizing a population-based tumor registry. A weakness of this study is its retrospective nature, and thus the inherent possibility of missing confounding factors. For instance, this database does not have other salient information such as tamoxifen use to support our hypotheses. Moreover, this study only examined proportional changes among women who developed EC, as we do not have information on cancer incidence in the general population.

A critical limitation of the study is that central pathology review to confirm UCS was not performed. As this study covers a long time, it is likely that reliability of histopathology diagnosis has changed over time, in part related to evolving use of immunohistochemistry. Lastly, while the aforementioned hypothesis linking increasing obese population and increasing trends of UCS sounds plausible, this database does not have information for body mass index to prove this.

The clinical implications of our results may lie in the prevention, diagnosis, and treatment for UCS. The increasing trend in the diagnosis of UCS is particularly applicable to treatment strategy as prognosis of UCS is generally poor even in early-stage disease [14,15]. There are currently limited treatment choices for chemotherapeutic agents for UCS, and therefore, developing effective treatment agents and strategies should be of paramount importance.

In conclusion, there seems to be a significant increase in proportion of UCS among EC. Previously, the proportion of UCS was recognized to comprise less than 5% of all uterine tumors [1,17,18]. However, the proportion of UCS now exceeds 5% with a continuous increase. Based on our observation, we respectfully suggest that UCS is no longer considered to be a rare tumor in the era of 21st century.

## REFERENCES

1. Cantrell LA, Blank SV, Duska LR. Uterine carcinosarcoma: a review of the literature. *Gynecol Oncol* 2015;137:581-8.  
[PUBMED](#) | [CROSSREF](#)
2. Wada H, Enomoto T, Fujita M, Yoshino K, Nakashima R, Kurachi H, et al. Molecular evidence that most but not all carcinosarcomas of the uterus are combination tumors. *Cancer Res* 1997;57:5379-85.  
[PUBMED](#)
3. Kernochan LE, Garcia RL. Carcinosarcomas (malignant mixed Müllerian tumor) of the uterus: advances in elucidation of biologic and clinical characteristics. *J Natl Compr Canc Netw* 2009;7:550-6.  
[PUBMED](#) | [CROSSREF](#)
4. Zhao S, Bellone S, Lopez S, Thakral D, Schwab C, English DP, et al. Mutational landscape of uterine and ovarian carcinosarcomas implicates histone genes in epithelial-mesenchymal transition. *Proc Natl Acad Sci U S A* 2016;113:12238-43.  
[PUBMED](#) | [CROSSREF](#)
5. Cherniack AD, Shen H, Walter V, Stewart C, Murray BA, Bowlby R, et al. Integrated molecular characterization of uterine carcinosarcoma. *Cancer Cell* 2017;31:411-23.  
[PUBMED](#) | [CROSSREF](#)
6. Sutton G. Uterine sarcomas 2013. *Gynecol Oncol* 2013;130:3-5.  
[PUBMED](#) | [CROSSREF](#)
7. Brooks SE, Zhan M, Cote T, Baquet CR. Surveillance, epidemiology, and end results analysis of 2677 cases of uterine sarcoma 1989–1999. *Gynecol Oncol* 2004;93:204-8.  
[PUBMED](#) | [CROSSREF](#)
8. Meredith RF, Eisert DR, Kaka Z, Hodgson SE, Johnston GA Jr, Boutselis JG. An excess of uterine sarcomas after pelvic irradiation. *Cancer* 1986;58:2003-7.  
[PUBMED](#) | [CROSSREF](#)

9. McCluggage WG, McManus DT, Lioe TF, Hill CM. Uterine carcinosarcoma in association with tamoxifen therapy. *Br J Obstet Gynaecol* 1997;104:748-50.  
[PUBMED](#) | [CROSSREF](#)
10. Matsuo K, Ross MS, Bush SH, Yunokawa M, Blake EA, Takano T, et al. Tumor characteristics and survival outcomes of women with tamoxifen-related uterine carcinosarcoma. *Gynecol Oncol* 2017;144:329-35.  
[PUBMED](#) | [CROSSREF](#)
11. Shah SH, Jagannathan JP, Krajewski K, O'Regan KN, George S, Ramaiya NH. Uterine sarcomas: then and now. *AJR Am J Roentgenol* 2012;199:213-23.  
[PUBMED](#) | [CROSSREF](#)
12. Amant F, Cadron I, Fuso L, Berteloot P, de Jonge E, Jacomen G, et al. Endometrial carcinosarcomas have a different prognosis and pattern of spread compared to high-risk epithelial endometrial cancer. *Gynecol Oncol* 2005;98:274-80.  
[PUBMED](#) | [CROSSREF](#)
13. Pacaut C, Bourmaud A, Rivoirard R, Moriceau G, Guy JB, Collard O, et al. Uterine and ovary carcinosarcomas: outcome, prognosis factors, and adjuvant therapy. *Am J Clin Oncol* 2015;38:272-7.  
[PUBMED](#) | [CROSSREF](#)
14. Matsuo K, Takazawa Y, Ross MS, Elishaev E, Podzielinski I, Yunokawa M, et al. Significance of histologic pattern of carcinoma and sarcoma components on survival outcomes of uterine carcinosarcoma. *Ann Oncol* 2016;27:1257-66.  
[PUBMED](#) | [CROSSREF](#)
15. Matsuo K, Omatsu K, Ross MS, Johnson MS, Yunokawa M, Klobocista MM, et al. Impact of adjuvant therapy on recurrence patterns in stage I uterine carcinosarcoma. *Gynecol Oncol* 2017;145:78-87.  
[PUBMED](#) | [CROSSREF](#)
16. Boll D, Verhoeven RH, van der Aa MA, Pauwels P, Karim-Kos HE, Coebergh JW, et al. Incidence and survival trends of uncommon corpus uteri malignancies in the Netherlands, 1989–2008. *Int J Gynecol Cancer* 2012;22:599-606.  
[PUBMED](#) | [CROSSREF](#)
17. Arrastia CD, Fruchter RG, Clark M, Maiman M, Remy JC, Macasaet M, et al. Uterine carcinosarcomas: incidence and trends in management and survival. *Gynecol Oncol* 1997;65:158-63.  
[PUBMED](#) | [CROSSREF](#)
18. Nordal RR, Thoresen SO. Uterine sarcomas in Norway 1956–1992: incidence, survival and mortality. *Eur J Cancer* 1997;33:907-11.  
[PUBMED](#) | [CROSSREF](#)
19. National Cancer Institute (US). The Surveillance, Epidemiology, and End Result Program [Internet]. Bethesda, MD: National Cancer Institute; [cited 2017 Oct 16]. Available from: <http://seer.cancer.gov/>.
20. National Cancer Registrars Association (US). [Internet]. Alexandria, VA: National Cancer Registrars Association; [cited 2017 Oct 16]. Available from: <http://www.ncra-usa.org>.
21. Matsuo K, Opper NR, Ciccone MA, Garcia J, Tierney KE, Baba T, et al. Time interval between endometrial biopsy and surgical staging for type I endometrial cancer: association between tumor characteristics and survival outcome. *Obstet Gynecol* 2015;125:424-33.  
[PUBMED](#) | [CROSSREF](#)
22. Matsuo K, Machida H, Ragab OM, Takiuchi T, Pham HQ, Roman LD. Extent of pelvic lymphadenectomy and use of adjuvant vaginal brachytherapy for early-stage endometrial cancer. *Gynecol Oncol* 2017;144:515-23.  
[PUBMED](#) | [CROSSREF](#)
23. National Cancer Institute (US). Joinpoint trend analysis software [Internet]. Bethesda, MD: National Cancer Institute; 2017 [cited 2017 Oct 16]. Available from: <http://surveillance.cancer.gov/joinpoint>.
24. Kim HJ, Fay MP, Feuer EJ, Midthune DN. Permutation tests for joinpoint regression with applications to cancer rates. *Stat Med* 2000;19:335-51.  
[PUBMED](#) | [CROSSREF](#)
25. U.S. Census Bureau. [Internet]. Washington, D.C.: U.S. Census Bureau; [cited 2017 Oct 16]. Available from: <https://www.census.gov/topics/population/race/data/tables.All.html>.
26. Kontis V, Bennett JE, Mathers CD, Li G, Foreman K, Ezzati M. Future life expectancy in 35 industrialised countries: projections with a Bayesian model ensemble. *Lancet* 2017;389:1323-35.  
[PUBMED](#) | [CROSSREF](#)
27. Ogden CL, Carroll MD, Fryar CD, Flegal KM. Prevalence of obesity among adults and youth: United States, 2011–2014 [Internet]. Atlanta, GA: U.S. Centers for Disease Control and Prevention; 2015 [cited 2017 Oct 16]. Available from: <https://www.cdc.gov/nchs/data/databriefs/db219.pdf>.

28. Onstad MA, Schmandt RE, Lu KH. Addressing the role of obesity in endometrial cancer risk, prevention, and treatment. *J Clin Oncol* 2016;34:4225-30.  
[PUBMED](#) | [CROSSREF](#)
29. Jung HY, Fattet L, Yang J. Molecular pathways: linking tumor microenvironment to epithelial-mesenchymal transition in metastasis. *Clin Cancer Res* 2015;21:962-8.  
[PUBMED](#) | [CROSSREF](#)
30. Yeung KT, Yang J. Epithelial-mesenchymal transition in tumor metastasis. *Mol Oncol* 2017;11:28-39.  
[PUBMED](#) | [CROSSREF](#)
31. Karlsson MC, Gonzalez SF, Welin J, Fuxe J. Epithelial-mesenchymal transition in cancer metastasis through the lymphatic system. *Mol Oncol* 2017;11:781-91.  
[PUBMED](#) | [CROSSREF](#)
32. Nath A, Li I, Roberts LR, Chan C. Elevated free fatty acid uptake via CD36 promotes epithelial-mesenchymal transition in hepatocellular carcinoma. *Sci Rep* 2015;5:14752.  
[PUBMED](#) | [CROSSREF](#)
33. Picon-Ruiz M, Morata-Tarifa C, Valle-Goffin JJ, Friedman ER, Slingerland JM. Obesity and adverse breast cancer risk and outcome: mechanistic insights and strategies for intervention. *CA Cancer J Clin* 2017;67:378-97.  
[PUBMED](#) | [CROSSREF](#)
34. Forouzanfar MH, Foreman KJ, Delossantos AM, Lozano R, Lopez AD, Murray CJ, et al. Breast and cervical cancer in 187 countries between 1980 and 2010: a systematic analysis. *Lancet* 2011;378:1461-84.  
[PUBMED](#) | [CROSSREF](#)
35. Palda VA, Goel V, Sawka CA. The rise of tamoxifen: temporal and geographical trends of tamoxifen use in Ontario. *Breast Cancer Res Treat* 1997;43:33-41.  
[PUBMED](#) | [CROSSREF](#)