


RESEARCH

Open Access



Dietary glycemic index and dietary glycemic load is associated with apelin gene expression in visceral and subcutaneous adipose tissues of adults

Emad Yuzbashian¹, Golaleh Asghari^{1,2}, Maryam Aghayan¹, Mehdi Hedayati³, Maryam Zarkesh^{3*}, Parvin Mirmiran^{1,2*}  and Alireza Khalaj⁴

Abstract

Background: Apelin, as an adipokine, plays an important role in the pathogenesis of insulin resistance and type 2 diabetes. This study aimed to determine whether the quality and quantity of dietary carbohydrates were associated with apelin gene expression in subcutaneous and visceral adipose tissues.

Methods: In this cross-sectional study, 102 adults who underwent minor abdominal surgery were selected. Approximately 100 mg of subcutaneous and visceral adipose tissues were collected during the surgery to measure apelin gene expression. Anthropometric measurement, blood samples, and dietary intakes were collected before surgery. The dietary carbohydrate intake, glycemic index (GI), and glycemic load (GL) were determined.

Results: The average apelin concentration was 269.6 ± 98.5 (pg/mL), and 16.3% of participants were insulin resistant. There was a correlation between insulin (p -value = 0.043), Homeostatic Model Assessment for Insulin Resistance (HOMA-IR) (p -value = 0.045) and apelin gene expression in visceral adipose tissue. There was a positive association of apelin gene expression with dietary GI and GL after adjustment for age, sex, and waist circumference in visceral and subcutaneous adipose tissues ($p < 0.05$). Apelin gene expression in visceral ($p = 0.002$) and subcutaneous ($p = 0.003$) adipose tissues was directly associated with foods with a higher GI. There was no association between total carbohydrate intake and apelin gene expression in both visceral and subcutaneous adipose tissues.

Conclusions: Dietary GI and GL, not total carbohydrate intake, were positively associated with apelin gene expression in both visceral and subcutaneous adipose tissues. Future studies are warranted to illustrate the chronic and acute effect of carbohydrate quality on apelin homeostasis.

Keywords: Glycemic index, Glycemic load, Carbohydrate, gene expression, Visceral and subcutaneous adipose tissue

Background

More attention has been paid to the role of adipocytes in the body homeostasis in the recent decade. Adipose tissue acts as an endocrine organ which has an important effect on insulin sensitivity and regulates energy

homeostasis through adipocyte-derived regulatory hormones termed adipokines [1, 2]. Apelin, as an adipokine, is a 36 amino-acid bioactive peptide that in humans is encoded by the apelin gene and located on chromosome Xq25–26.1. It is a key regulator in glucose and lipid metabolism [3] and plays an important role in the pathogenesis of insulin resistance and type 2 diabetes [4, 5]. Apelin regulates glucose homeostasis by increasing glucose uptake, enhancing insulin sensitivity in adipocytes [3] and inhibiting adipocyte lipolysis [6, 7].

Carbohydrates are the primary source of energy in the human diet. Glycemic index (GI) and glycemic load (GL),

* Correspondence: Zarkesh@endocrine.ac.ir; zarkesh1388@gmail.com; mirmiran@endocrine.ac.ir; mirmiran@enocrine.ac.ir

³Cellular and Molecular Endocrine Research Center, Research Institute for Endocrine Sciences, Shahid Beheshti University of Medical Sciences, P.O. Box: 19395-4763, Tehran, Iran

¹Nutrition and Endocrine Research Center, Research Institute for Endocrine Sciences, Shahid Beheshti University of Medical Sciences, Tehran, Iran
Full list of author information is available at the end of the article



as measurements of carbohydrate quality, provide an additional benefit compared to carbohydrate counting alone [8]. Dietary glycemic measures may affect body homeostasis [9] and contribute to the adipose-related pathways [10].

In our previous systematic review, we concluded that diet could alter apelin gene expression and concentration by mediating on plasma insulin levels [11]. It is well-established that insulin concentration is the important stimulator of apelin gene expression in adipose tissue [12]. Thus, we hypothesized that habitual dietary intake of carbohydrates, including quality and quantity, might have a distinguishing role in the prediction of apelin gene expression in adipose tissue by chronic manipulating of insulin concentration.

According to recent studies, apelin concentration may be affected by dietary intake in both human and animals [13, 14]. However, these studies mostly focused on dietary fatty acid, and data regarding dietary carbohydrate was rare. Thus, this study aimed to determine whether quality and quantity of dietary carbohydrates were associated with apelin gene expression of in subcutaneous and visceral adipose tissues.

Materials and methods

Participants

In this cross-sectional study, 102 participants aged more than 20-years, who had been admitted for elective abdominal surgery including appendectomy and hernia repair, were selected from Mostafa Khomeini and Khatam Al-Anbia Hospitals, Tehran, Iran. All participants were hospitalized for less than three days. Individuals were eligible for inclusion if they had no known medical illnesses such as diabetes mellitus or cancer, did not take lipid-lowering or anti-obesity medications, were not pregnant or lactating woman, and not on special diets. Approximately 100 mg of subcutaneous and visceral adipose tissues were collected during the surgery. All information and questionnaires were completed before surgery.

The ethics committee of the Research Institute for Endocrine Sciences (RIES) of Shahid Beheshti University of Medical Sciences approved the study (NO: IR.SB-MU.ENDOCRINE.REC.1395.372), and the study was conducted in accordance with the Declaration of Helsinki, as well as our institutional guidelines. Written informed consent was obtained from all participants.

Dietary measurement

Using a valid and reliable semi-quantitative food frequency questionnaire (FFQ), expert interviewers gathered regular dietary intakes of each participant during the past year, on a daily, weekly, or monthly basis, and according to household measures. Then, portion sizes of consumed foods were converted to grams. Energy and nutrient

contents were obtained from the US Department of Agriculture (USDA) food composition tables (FCT) because the Iranian FCTs were incomplete; although, the Iranian FCTs were used for traditional food items (like Kashk). The reliability and validity of the FFQ was evaluated in a previous study and indicated that the FFQ provides reasonably valid measures of the long-term average [15].

In the current study, we considered total carbohydrate intake and dietary GI and GL. Then, the food types were categorized based on their GI and GL into three different groups including high (≥ 70), medium (56–69) and low (≤ 55) GI foods (Additional file 1: Table S1) [16].

Dietary GI and GL were derived from the FFQ as follow [16]:

$$\text{Dietary GI} = \left[\frac{\sum (\text{carbohydrate content of each food item}) \times (\text{number of servings/d}) \times (\text{GI})}{\text{total daily carbohydrate intake}} \right]$$

$$\text{Dietary GL} = \left[\frac{\sum (\text{carbohydrate content of each food item}) \times (\text{number of servings/d}) \times (\text{GI})}{\text{total daily carbohydrate intake}} \right]$$

Quantitative real-time polymerase chain reaction analysis of gene expression

We extracted total RNA from visceral and subcutaneous fat tissues according to the manufacturer's protocol by using RNX-plus solution (Cinnagen, Iran). The quality of the extracted RNA was assessed by NanoDrop spectrophotometer (Thermo Fisher Scientific, Waltham, USA) and the ratio of absorption (260/280 nm) of all preparations were in an acceptable range.

In order to remove traces of genomic DNA before complementary DNA (cDNA) synthesis, total RNA was treated with DNase I. The cDNA synthesis kit (Thermo Scientific, USA) was used according to the manufacturer's recommendations. The product was stored at -20°C for further investigations.

Primers based on the sequences of the National Center for Biotechnology Information (NCBI) GenBank database were checked by Genrunner Software (version 3.05). The glyceraldehyde-3-phosphate dehydrogenase GAPDH gene was used as the reference gene for normalization across samples. Primer sequences of apelin were as follows:

apelin Forward: 5'- TCT GAC CCC CAA AGA TGA TG-3';

apelin Reverse: 5'- CTC GGA GAA TTA GTT TAG GAT ATT TCA-3';

The Real-Time quantitative PCR (qPCR), carried out using a Real-Time PCR instrument (Rotor-Gene 6000, Sydney, Australia), was performed in 25 μL volumes

containing 12.5 μ L 2X SYBR Green Master mix (Thermo Scientific, USA), 0.3 μ L forward primers, 0.3 μ L reverse primers, 8.9 μ L RNase-free water, and 3 μ L of the cDNA. For each gene, samples were run in duplicate for inter assay control along with GAPDH (housekeeping) and the non-template control (NTC); qPCR amplification was performed with the following thermal cycling conditions: 5 min at 95 °C for denaturation, followed by 45 cycles at 95 °C for 30 s, 60 °C for 30 s and 72 °C for 30 s for annealing, amplification, and quantification. The relative expression of apelin in each sample was calculated based on its threshold cycle (Ct), normalized to the Ct of the reference gene. All qPCR laboratory procedures were performed according to the MIQE guidelines [17].

Anthropometric and laboratory measurements

Weight was measured in minimum clothing to the precision of 0.1 kg on a SECA digital weighing scale (Seca 707; Seca Corporation, Hanover, Maryland; range 0.1–200 kg), and height was measured to the nearest 0.1 cm while barefoot. Body mass index (BMI) was calculated as weight (kg) divided by square of height (m^2). Waist circumference (WC) was measured to the nearest 0.5 cm, using a measuring tape while in standing position and after a gentle respiration, at the level of the umbilicus.

Physical activity was assessed during interviews, using the long forms of the reliable and validated Persian version of the International Physical Activity Questionnaire (IPAQ) [18]. The concept of metabolic equivalents (MET) was used to measure energy expenditure. Low level of physical activity was considered as equivalent metabolic task < 600 min/wk.

Arterial blood pressure (BP) was measured for each participant using a mercury sphygmomanometer. Systolic blood pressure (SBP) was determined by the onset of the tapping Korotkoff sound and diastolic blood pressure (DBP) as the disappearance of this sound. Blood pressure was measured twice, and the average was considered as the participant's BP.

Blood samples were drawn from all study participants between 7:00 and 9:00 AM after 12–14 h of overnight fasting. All the blood analyses were done at the TLGS research laboratory on the day of blood collection. Fasting plasma glucose (FPG) was measured by the enzymatic colorimetric method using glucose oxidase. Inter- and intra-assay coefficients of variation (CV) were both 1.0% for FPG. Serum triglycerides (TGs) were assayed using an enzymatic colorimetric method with glycerol phosphate oxidase. Inter- and intra-assay CV for TGs were 0.4 and 2.1%, respectively. These analyses were performed using commercial kits (Pars Azmoon, Tehran, Iran) and a Selectra 2 autoanalyzer (Vital Scientific, Spankeren, The Netherlands). Insulin was measured using the enzyme-linked immunosorbent assay (ELISA) with

Merckodia kits (Uppsala, Sweden). Inter- and intra-assay CVs of insulin were 1.7 and 2.3, respectively.

Statistical analysis

Normality of variables was tested by the histogram and Kolmogorov-Smirnov test. Because plasma TGs and insulin were skewed, log transformation was used. Quantitative variables were described as mean \pm standard deviation (SD) or median with interquartile range, and qualitative variables were reported as percentage. Relative mRNA expression levels were determined for each sample separately using internal reference genes GAPDH with the formula $2^{-(\Delta Ct)}$, where ΔCt is Ct (target gene) – mean of Ct (reference genes) [19]. In order to adjust energy, we used the residual method for all dietary exposures including total carbohydrate, GI, GL, and food groups. Then, these variables were used for all statistical analysis [20].

The association of apelin gene expression according to tertiles of energy-adjusted dietary GI in visceral and subcutaneous adipose tissues was determined using LSD. The correlation of apelin gene expression in visceral and subcutaneous adipose tissues with energy-adjusted dietary carbohydrate was performed by bivariate correlation. To investigate the trend of variables according to tertiles of GI, the linear regression and chi-square test was used for continuous and categorical variables, respectively. Adjusted linear regression tests were performed in two models (model 1 adjusted for age and sex, and model 2 additionally adjusted for WC) to evaluate possible associations of dietary carbohydrates, GI, GL, and high, medium and low glycemic foods with apelin gene expression. Both unstandardized (95% confidence interval) and standardized β (STZ β) were reported. Before running multivariable linear models, the interaction terms between age, sex and WC, and dietary exposures were examined. No interaction was observed between considered covariates and dietary carbohydrates, GI, GL, and high, medium and low glycemic foods. All data were analyzed using the Statistical Package for Social Sciences program (SPSS) (version 15.0; SPSS Inc., Chicago IL) and *P*-values < 0.05 were considered statistically significant.

Results

The current study consisted of 102 non-diabetic participants characterized by a mean age of 41.7 ± 14.6 years, and mean BMI of 35.2 ± 10.7 kg/ m^2 . The average apelin concentration was 269.6 ± 98.5 (pg/mL). Among participants, 16.3% presented insulin resistance.

The biochemical, anthropometric, and dietary characteristics of participants according to tertiles of dietary GI are summarized in Table 1. Insulin concentration, HOMA-IR, and prevalence of insulin resistance were significantly increased in subjects across the tertiles of dietary GI.

Table 1 Demographic, anthropometric, dietary intake and serum biochemical parameters according to the tertiles of dietary glycemic index^a

	Dietary glycemic index tertiles			P value ^b
	T1	T2	T3	
Age (years)	43.3 ± 14.4	43.4 ± 14.2	38.3 ± 14.2	0.252
Female (%)	85.3	70.6	78.8	0.514
Low physical activity (%)	47.1	44.1	42.4	0.882
Body mass index (kg/m ²)	33.8 ± 10.7	36.6 ± 10.8	35.3 ± 10.6	0.561
Waist Circumference	107.1 ± 22.5	113.2 ± 22.0	107.6 ± 24.3	0.491
Fasting plasma glucose (mg/dl)	86.7 ± 12.1	86.7 ± 10.9	87.6 ± 8.3	0.925
Insulin (μU/mL)	6.0 (4.4–9.8)	5.8 (3.1–8.1)	9.4 (5.6–19.6)	0.007
HOMA-IR	1.74 ± 1.5	1.47 ± 1.1	3.3 ± 4.3	0.012
Insulin resistant (%)	11.8	5.9	22.3	0.020
Triglycerides (mg/dl)	68.0 (61.7–90.2)	66.5 (60.2–83.7)	72.5(65.0–87.5)	0.463
Apelin (pg/mL)	263.2 ± 68.9	244.4 ± 82.6	302.6 ± 120.6	0.048
Total energy intake (kcal)	2778 ± 628	2951 ± 849	2896 ± 1027	0.694
Total carbohydrate (% of energy)	54.6 ± 6.1	57.8 ± 8.2	57.7 ± 6.7	0.121
Total carbohydrate (g/d)	397.9 ± 53.1	403.4 ± 53.2	421.4 ± 54.9	0.181
Dietary glycemic index	48.1 ± 5.5	56.5 ± 1.7	65.7 ± 6.8	< 0.001
Dietary glycemic load	188.8 ± 33.4	232.3 ± 40.8	275.8 ± 47.5	< 0.001
High glycemic foods (serv/d)	6.9 ± 2.2	8.8 ± 3.6	11.7 ± 4.1	< 0.001
Medium glycemic foods (serv/d)	1.3 ± 0.6	0.9 ± 1.9	1.1 ± 1.5	0.258
Low glycemic foods (serv/d)	11.3 ± 4.6	11.3 ± 6.0	8.4 ± 11.0	0.006
Protein (% of energy)	14.7 ± 2.8	14.2 ± 2.5	13.7 ± 2.7	0.328
Fat (% of energy)	33.6 ± 5.9	30.8 ± 6.7	30.7 ± 5.1	0.090

^aData are represented as mean ± standard deviation or median (interquartile range) for continuous variables and percent for categorically distributed variables

^blinear regression was used for continuous variables and chi-square test for categorical variables

The residual model was used to adjust total energy intake for dietary exposures

Participants in the highest tertile of dietary GI had more apelin gene expression in visceral and subcutaneous adipose tissue (Fig. 1). No significant differences were observed in mean BMI across dietary GI groups. There was a significant correlation of insulin ($r = 0.201$, p -value = 0.043) and HOMA-IR ($r = 0.210$, P value = 0.045) with apelin gene expression only in visceral adipose tissue (data not shown).

Energy-adjusted dietary GI was positively correlated with apelin gene expression in visceral ($r = 0.495$, $P < 0.001$) and subcutaneous ($r = 0.437$, $P < 0.001$) adipose tissues. Furthermore, dietary GL had a significant direct correlation with both visceral ($r = 0.421$, $P < 0.001$) and subcutaneous ($r = 0.262$, $P = 0.0008$) apelin gene expression. A positive correlation was also observed between intake of high GI foods and apelin gene expression in both visceral and subcutaneous adipose tissues (Fig. 2).

The association between dietary GI and apelin gene expression remained significant upon adjustment for age, sex and WC in the visceral (STZ $\beta = 0.402$, $P < 0.001$) and subcutaneous (STZ $\beta = 0.477$, $P < 0.001$) adipose tissues. Furthermore, there was a significant positive association

between dietary GL and apelin gene expression in both visceral (STZ $\beta = 0.224$, $P = 0.005$) and subcutaneous (STZ $\beta = 0.350$, $P = 0.029$) adipose tissue. After adjusting for confounders, each standard deviation higher intake of foods with higher GI, was directly associated with apelin gene expression in visceral (STZ $\beta = 0.253$, $P = 0.002$) and subcutaneous (STZ $\beta = 0.255$, $P = 0.003$) adipose tissue (Table 2). Foods which were mainly contributed to high GI category including date and Lavash were directly associated with apelin gene expression in both adipose tissues (Additional file 1: Table S2).

Discussion

In the present study, dietary GI and dietary GL were directly associated with the apelin gene expression in both visceral and subcutaneous adipose tissue after controlling for age, sex, and WC. Moreover, habitual intake of high GI food had a positive association with subcutaneous and visceral apelin gene expression; per 3.9 serv/d increase in intake of high GI foods, apelin gene expression in subcutaneous and visceral adipose tissues increased 0.253 and 0.255 unit, respectively.

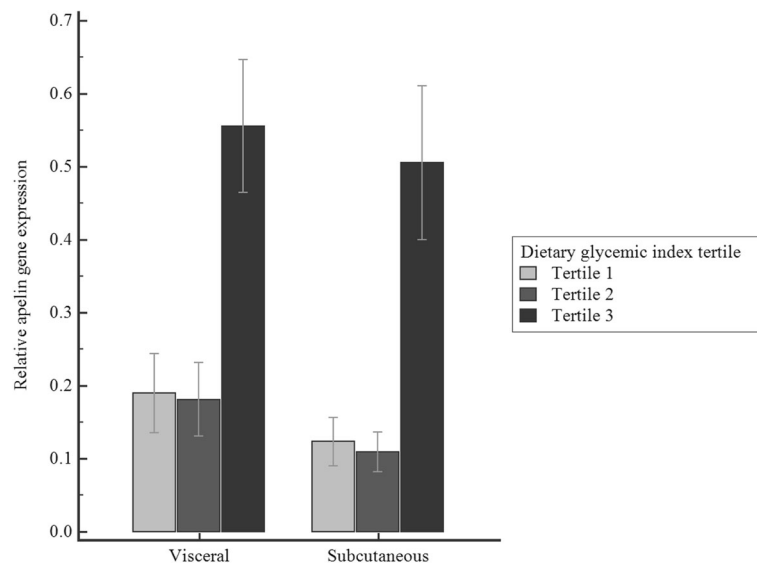


Fig. 1 Distribution of relative apelin gene expression in visceral and subcutaneous adipose tissues according to the tertile of energy-adjusted dietary glycemic index (GI). Results are expressed as mean \pm SEM. *P*-values for the association of apelin gene expression in the lowest tertile in comparison with medium and highest tertile of energy adjusted dietary GI in visceral adipose tissue were 0.928 and < 0.001 , respectively. *p*-values for the association of apelin gene expression in the lowest tertile in comparison with the medium and highest tertile of energy-adjusted dietary GI in subcutaneous adipose tissue were 0.878 and < 0.001 , respectively

To the best of our knowledge, this was the first study which focused on the association of dietary quality and quantity of carbohydrate with apelin gene expression in human fat depots. However, a number of studies have investigated the relationship between different feeding patterns and apelin concentration and gene expression in both human and animals [13, 21–23]. In interventional studies, a caloric-restricted diet could decrease both the apelin concentration and gene expression in human [13, 21]. Castan laurel et al., have found that 12 weeks hypocaloric weight-reducing diet in 20 obese women was associated with increased plasma and adipose tissue expression of apelin gene [21]. Nevertheless, Celik et al., found that Ramadan fasting did not affect the apelin concentration in healthy men [22]. Moreover, apelin gene expression increased in the subcutaneous adipose tissue in response to a high-fat diet in rats [23]. It seems that the results of these studies are inconsistent and most of them had focused on the restricted calorie intakes and dietary fatty acids, and none of them had considered the dietary carbohydrate content as a probable factor which affects apelin concentration and gene expression.

Carbohydrates are the primary nutrient contributing to the supply of energy requirements; constituting 45–65% of the energy intake in a regular diet. It should be noted that dietary GI and GL imply some other aspects of dietary quality, which can partly reflect dietary characteristics. It is possible that higher carbohydrate intake may be substituted with dietary fat or protein while maintaining a constant energy intake [24]. Therefore,

dietary composition might be a factor which can influence adiposities. An interesting point of our study was that carbohydrate quality, not total carbohydrate intake, was significantly associated with apelin gene expression, and emphasizing the importance of food quality instead of quantity.

The GI and GL represent different aspects of this macronutrient and are used to characterize the capability of food increasing serum glucose concentrations [25]. Foods with a relatively high GI can potentially affect body composition [26], and impact on specific metabolic processes, (such as lipolysis and lipogenesis) by increasing insulin to a greater extent or for a longer time [27, 28]. In the current study, we observed that high dietary GI foods had a positive relationship with apelin gene expression in both adipose tissues. Physiological alteration in response to low GI against high GI dietary intervention indicated that white adipose tissue gene expression was altered in pathways involving insulin sensitivity and fatty acid metabolism [28]. Furthermore, it was revealed that peroxisome proliferator-activated receptor-gamma (PPAR- γ), an important transcription factor in the regulation of apelin [29], showed an increase with high GI diet [28].

Although none of the participants in the current study had diabetes, by increasing the tertiles of dietary GI, insulin resistance significantly increased in the study population. Evidence showed that insulin resistance induced by a high-fat diet caused an increase in both apelin concentration and gene expression in adipose tissues [14, 30]. Moreover, apelin concentration and gene expression in mice

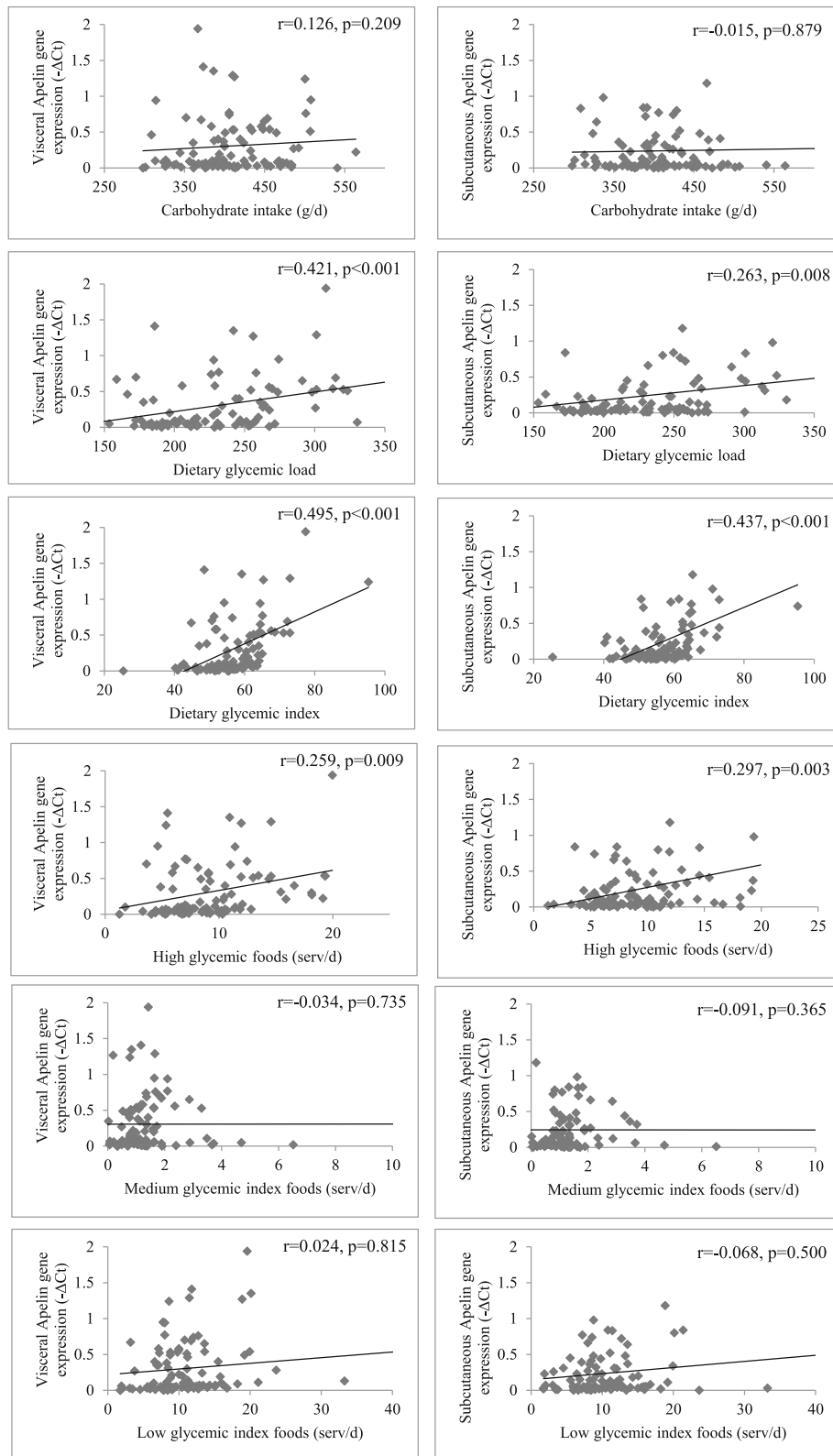


Fig. 2 Correlation between apelin gene expression in visceral and subcutaneous adipose tissues and energy-adjusted dietary carbohydrate intake throughout the study participants

Table 2 Regression coefficient of total carbohydrate, dietary glycemic index, and dietary glycemic load with apelin gene expression in adipose tissues

	Subcutaneous			Visceral		
	B (95% CI)	STZ β	<i>P</i> value	B (95% CI)	STZ β	<i>P</i> value
Total carbohydrate (per 54.1 g/d)						
Age and sex adjusted	0.000 (−0.002 to 0.002)	−0.006	0.952	0.001 (−0.001 to 0.002)	0.081	0.426
Age, sex, and WC Adjusted	0.000 (−0.002 to 0.002)	−0.022	0.839	0.000 (−0.002 to 0.002)	−0.018	0.865
The dietary glycemic index (per 8.8)						
Age and sex adjusted	0.020 (0.011 to 0.029)	0.419	< 0.001	0.023 (0.015 to 0.035)	0.481	< 0.001
Age, sex, and WC Adjusted	0.024 (0.013 to 0.034)	0.428	< 0.001	0.024 (0.013 to 0.034)	0.437	< 0.001
Dietary glycemic load (per 53.9)						
Age and sex adjusted	0.002 (0.000 to 0.003)	0.257	0.010	0.003 (0.001 to 0.004)	0.349	< 0.001
Age, sex, and WC Adjusted	0.002 (0.000 to 0.004)	0.246	0.029	0.003 (0.001 to 0.004)	0.395	0.005
High glycemic foods (per 3.9 serv/d)						
Age and sex adjusted	0.030 (0.010 to 0.051)	0.284	0.004	0.028 (0.007 to 0.049)	0.261	0.009
Age, sex, and WC Adjusted	0.034 (0.012 to 0.056)	0.306	0.003	0.036 (0.014 to 0.049)	0.328	0.002
Medium glycemic foods (per 1.5 serv/d)						
Age and sex adjusted	−0.012 (−0.070 to 0.047)	−0.041	0.692	−0.015 (−0.075 to 0.044)	−0.053	0.607
Age, sex, and WC Adjusted	−0.018 (−0.083 to 0.047)	−0.060	0.578	−0.018 (−0.082 to 0.047)	−0.059	0.588
Low glycemic foods (per 7.6 serv/d)						
Age and sex adjusted	−0.004 (−0.015 to 0.007)	−0.076	0.455	0.000 (−0.011 to 0.012)	0.009	0.933
Age, sex, and WC Adjusted	−0.004 (−0.011 to 0.005)	−0.142	0.180	0.002 (−0.017 to 0.011)	0.072	0.492

STZ β ; standardized β , WC; waist circumference

The residual model was used to adjust total energy intake for dietary exposures

has been reported to be regulated according to the severity of insulin resistance, suggesting a link between apelin and glucose homeostasis [31]. Dray et al. have shown that exogenous glucose promotes the luminal secretion of apelin, when administered to mice by gavage [32]. Regular consumption of meals with high GI increased 24-h blood glucose and insulin levels [33]. Since apelin concentration might be regulated by insulin concentration, dietary factors which influence glucose homeostasis can up-regulate apelin gene expression.

Our study has some limitations. Because of the cross-sectional design of the study, we could not assess the causality of the study. However, as it is less likely that apelin gene expression in fat depots influences the quality and quantity of carbohydrate intakes, we consider our inference that carbohydrate intakes may have primary effects on apelin gene expression plausible. Secondly, since there was no complete Iranian FCT, we had to use the USDA FCT. Third, another limitation of this study was the non-random selection of participants. Therefore, the results may not be representative of the population. The nature of the non-random sample in our study may also lead to a selection bias which warrants caution in interpreting the results. Presence of convenience sampling can prevent generalization of the findings to the broader population and become less

representative of the intended population as time goes on. In order to be comparable and generalizable, the findings in future studies must consider recruitment of samples. Fourth, despite controlling critical potential confounders, several other confounders may still affect the association between dietary carbohydrate intake and apelin gene expression. This study also has its strength; it was the first study to provide data on dietary GI and its association with apelin gene expression. Also, the observational design of the current study reflected long-term habitual high GI food on apelin gene expression.

Conclusion

In conclusion, dietary GI and GL, not total carbohydrate intake, was associated with apelin gene expression in both visceral and subcutaneous adipose tissues. Future studies are warranted to illustrate the chronic and accurate effect of carbohydrate quality on apelin homeostasis.

Additional file

Additional file 1: Table S1. Foods contributed to making up different glycemic categories. **Table S2.** Foods substantially contributed to each GI category and apelin gene expression in adipose tissues. (DOCX 17 kb)

Abbreviations

BMI: body mass index; BP: blood pressure; CV: coefficients of variation; DBP: diastolic blood pressure; ELISA: enzyme-linked immunosorbent assay; FCT: food composition tables; FFO: food frequency questionnaire; FPG: Fasting plasma glucose; GI: glycemic index; GL: glycemic load; IPAC: International Physical Activity Questionnaire; MET: metabolic equivalents task; SBP: Systolic blood pressure; SD: standard deviation; SPSS: Statistical Package for the Social Sciences program; STZ β : standardized β ; TGs: triglycerides; USDA: US Department of Agriculture; WC: waist circumference

Acknowledgements

We would like to acknowledge Dr. Forough Ghanbari for a critical edition of English grammar and syntax of the manuscript.

Authors' contributions

E.Y. conceptualized and designed the study, gathered adipose tissue, performed RNA extraction and Real-time PCR, analyzed and interpreted the data, prepared the manuscript and approved the final manuscript as submitted. G.A. entered data, drafted the initial manuscript, and approved the final manuscript as submitted. M.A. analyzed and interpreted the data, prepared the manuscript and approved the final manuscript as submitted. M.H. supervised the project, consulted lab protocol, and approved the final manuscript as submitted. M.Z. prepared the lab materials; cDNA synthesized, prepared the manuscript and approved the final manuscript as submitted. P.M. drafted the initial manuscript and approved the final manuscript as submitted. A.Kh. biopsied the patients during the abdominal surgery and approved the final manuscript as submitted.

Funding

This study was supported by the Shahid Beheshti University of Medical Sciences, Tehran, Iran (Grant no. 10490-43).

Availability of data and materials

All data generated or analyzed during this study are included in this published article.

Ethics approval and consent to participate

The design of this study was approved by the institutional ethics committee of the Research Institute for Endocrine Sciences, affiliated to the Shahid Beheshti University of Medical Sciences, and a written informed consent was obtained from participants.

Consent for publication

Not applicable

Competing interests

The authors declare that they have no competing interests.

Author details

¹Nutrition and Endocrine Research Center, Research Institute for Endocrine Sciences, Shahid Beheshti University of Medical Sciences, Tehran, Iran. ²Department of Clinical Nutrition and Dietetics, Faculty of Nutrition Sciences and Food Technology, National Nutrition and Food Technology Research Institute, Shahid Beheshti University of Medical Sciences, P.O.Box: 19816-19573, Tehran, Iran. ³Cellular and Molecular Endocrine Research Center, Research Institute for Endocrine Sciences, Shahid Beheshti University of Medical Sciences, P.O. Box: 19395-4763, Tehran, Iran. ⁴Tehran Obesity Treatment Center, Department of Surgery, Shahed University, Tehran, Iran.

Received: 17 April 2019 Accepted: 6 September 2019

Published online: 18 September 2019

References

- Lago F, Gómez R, Gómez-Reino JJ, Dieguez C, Gualillo O. Adipokines as novel modulators of lipid metabolism. *Trends Biochem Sci*. 2009;34:500–10.
- Matsuzawa Y. The metabolic syndrome and adipocytokines. *Expert Rev Clin Immunol*. 2007;3:39–46.
- Dray C, Knauf C, Daviaud D, Waget A, Boucher J, Buléon M, Cani PD, Attané C, Guigné C, Carpené C. Apelin stimulates glucose utilization in normal and obese insulin-resistant mice. *Cell Metab*. 2008;8:437–45.
- Li L, Yang G, Li Q, Tang Y, Yang M, Yang H, Li K. Changes and relations of circulating visfatin, apelin, and resistin levels in normal, impaired glucose tolerance, and type 2 diabetic subjects. *Exp Clin Endocrinol Diabetes*. 2006;114:544–8.
- Przewlocka-Kosmala M, Kotwica T, Mysiak A, Kosmala W. Reduced circulating apelin in essential hypertension and its association with cardiac dysfunction. *J Hypertens*. 2011;29:971–9.
- Yue P, Jin H, Xu S, Aillaud M, Deng AC, Azuma J, Kundu RK, Reaven GM, Quertermous T, Tsao PS. Apelin decreases lipolysis via Gq, Gi, and AMPK-dependent mechanisms. *Endocrinology*. 2011;152:59–68.
- Tatemoto K, Hosoya M, Habata Y, Fujii R, Kakegawa T, Zou M-X, Kawamata Y, Fukusumi S, Hinuma S, Kitada C. Isolation and characterization of a novel endogenous peptide ligand for the human APJ receptor. *Biochem Biophys Res Commun*. 1998;251:471–6.
- Jenkins D, Wolever T, Taylor RH, Barker H, Fielden H, Baldwin JM, Bowling AC, Newman HC, Jenkins AL, Goff DV. Glycemic index of foods: a physiological basis for carbohydrate exchange. *Am J Clin Nutr*. 1981;34:362–6.
- Howarth NC, Saltzman E, Roberts SB. Dietary fiber and weight regulation. *Nutr Rev*. 2001;59:129–39.
- Hotta K, Funahashi T, Arita Y, Takahashi M, Matsuda M, Okamoto Y, Iwahashi H, Kuriyama H, Ouchi N, Maeda K. Plasma concentrations of a novel, adipose-specific protein, adiponectin, in type 2 diabetic patients. *Arterioscler Thromb Vasc Biol*. 2000;20:1595–9.
- Yuzbashian E, Zarkesh M, Asghari G, Hedayati M, Safarian M, Mirmiran P, Khalaj A. Is apelin gene expression and concentration affected by dietary intakes? A systematic review. *Crit Rev Food Sci Nutr*. 2018;58:680–8.
- Glassford AJ, Yue P, Sheikh AY, Chun HJ, Zarafshar S, Chan DA, Reaven GM, Quertermous T, Tsao PS. HIF-1 regulates hypoxia- and insulin-induced expression of apelin in adipocytes. *Am J Physiol Endocrinol Metab*. 2007;293:E1590–6.
- Krist J, Wieder K, Klötting N, Oberbach A, Kralisch S, Wiesner T, Schön MR, Gärtner D, Dietrich A, Shang E. Effects of weight loss and exercise on apelin serum concentrations and adipose tissue expression in human obesity. *Obesity facts*. 2013;6:57–69.
- Yang H, Zhao L, Zhang J, Tang C-S, Qi Y-F. Effect of treadmill running on apelin and APJ expression in adipose tissue and skeletal muscle in rats fed a high-fat diet. *Int J Sports Med*. 2015;36:535–41.
- Mirmiran P, Esfahani FH, Mehrabi Y, Hedayati M, Azizi F. Reliability and relative validity of an FFO for nutrients in the Tehran lipid and glucose study. *Public Health Nutr*. 2010;13:654–62.
- Foster-Powell K, Holt SH, Brand-Miller JC. International table of glycemic index and glycemic load values: 2002. *Am J Clin Nutr*. 2002;76:5–56.
- Bustin SA, Benes V, Garson JA, Hellems J, Huggett J, Kubista M, Mueller R, Nolan T, Pfaffl MW, Shipley GL. The MIQE guidelines: minimum information for publication of quantitative real-time PCR experiments. *Clin Chem*. 2009;55:611–22.
- Vasheghani-Farahani A, Tahmasbi M, Asheri H, Ashraf H, Nedjat S, Kordi R. The Persian, last 7-day, long form of the International Physical Activity Questionnaire: translation and validation study. *Asian J Sports Med*. 2011;2:106.
- Livak KJ, Schmittgen TD. Analysis of relative gene expression data using real-time quantitative PCR and the 2⁻ $\Delta\Delta$ CT method. *Methods*. 2001;25:402–8.
- Willett W, Stampfer MJ. Total energy intake: implications for epidemiologic analyses. *Am J Epidemiol*. 1986;124:17–27.
- Castan-Laurell I, Vítková M, Daviaud D, Dray C, Kováčiková M, Kovacova Z, Hejnova J, Stich V, Valet P. Effect of hypocaloric diet-induced weight loss in obese women on plasma apelin and adipose tissue expression of apelin and APJ. *Eur J Endocrinol*. 2008;158:905–10.
- Celik A, Saricicek E, Saricicek V, Sahin E, Ozdemir G, Bozkurt S, Okumus M, Sucakli MH, Cikim G, Coskun Y. Effect of Ramadan fasting on serum concentration of apelin-13 and new obesity indices in healthy adult men. *Med Sci Monit*. 2014;20:337.
- García-Díaz D, Campión J, Milagro FI, Martínez JA. Adiposity dependent apelin gene expression: relationships with oxidative and inflammation markers. *Mol Cell Biochem*. 2007;305:87–94.
- Greenwood DC, Threapleton DE, Evans CE, Cleghorn CL, Nykjaer C, Woodhead C, Burley VJ. Glycemic index, glycemic load, carbohydrates, and type 2 diabetes: systematic review and dose-response meta-analysis of prospective studies. *Diabetes Care*. 2013;36:4166–71.
- Trumbo P, Schlicker S, Yates AA, Poos M. Dietary reference intakes for energy, carbohydrate, fiber, fat, fatty acids, cholesterol, protein and amino acids. *J Acad Nutr Diet*. 2002;102:1621.

26. Ludwig DS. Dietary glycemic index and the regulation of body weight. *Lipids*. 2003;38:117–21.
27. Armendáriz-Anguiano AL, Jimenez-Cruz A, Bacardi-Gascon M, Hurtado-Ayala L. Effect of a low glycemic load on body composition and homeostasis model assessment (HOMA) in overweight and obese subjects. *Nutricion hospitalaria*. 2011;26.
28. Van Schothorst EM, Bunschoten A, Verlinde E, Schrauwen P, Keijer J. Glycemic index differences of high-fat diets modulate primarily lipid metabolism in murine adipose tissue. *Am J Phys Heart Circ Phys*. 2011; 43(15):942–9.
29. Wysocka MB, Pietraszek-Gremplewicz K, Nowak D. The role of apelin in cardiovascular diseases, obesity and cancer. *Front Physiol*. 2018;9.
30. Bertrand C, Pignalosa A, Wanecq E, Rancoule C, Batut A, Deleruyelle S, Lionetti L, Valet P, Castan-Laurell I. Effects of dietary eicosapentaenoic acid (EPA) supplementation in high-fat fed mice on lipid metabolism and apelin/APJ system in skeletal muscle. *PLoS One*. 2013;8:e78874.
31. Castan-Laurell I, Boucher J, Dray C, Daviaud D, Guigné C, Valet P. Apelin, a novel adipokine over-produced in obesity: friend or foe? *Mol Cell Endocrinol*. 2005;245:7–9.
32. Dray C, Sakar Y, Vinel C, Daviaud D, Masri B, Garrigues L, Wanecq E, Galvani S, Negre-Salvayre a, Barak LS: the intestinal glucose–Apelin cycle controls carbohydrate absorption in mice. *Gastroenterology*. 2013;144:771–80.
33. Azizi F. Dietary glycemic index, glycemic load, and cardiovascular disease risk factors: Tehran lipid and glucose study. *Archives of Iranian medicine*. 2013;16:401.

Publisher's Note

Springer Nature remains neutral with regard to jurisdictional claims in published maps and institutional affiliations.

Ready to submit your research? Choose BMC and benefit from:

- fast, convenient online submission
- thorough peer review by experienced researchers in your field
- rapid publication on acceptance
- support for research data, including large and complex data types
- gold Open Access which fosters wider collaboration and increased citations
- maximum visibility for your research: over 100M website views per year

At BMC, research is always in progress.

Learn more biomedcentral.com/submissions

