

RESEARCH

Open Access

GPCR-like signaling mediated by smoothed contributes to acquired chemoresistance through activating Gli

Xia Zhan, Juan Wang, Yuan Liu, Yuanqiu Peng and Wenfu Tan*

Abstract

Background: Smoothed (Smo), which possesses a structural similarity with classic G-protein coupled receptors (GPCR), is the most important molecular target in Hedgehog (Hh) signaling system for developing anticancer drugs; however, whether Smo may transmit GPCR-like signaling to activate the canonical transcriptional factor Gli of Hh signaling system and consequently to be involved in the Gli-dependent biological events remains controversial.

Results: In this study, using the acquired chemoresistant cancer cell lines and their respective parental cells, we found that Smo may activate Gli through Gai, G β γ -JNK signaling axis, thereby promoting the Gli-dependent acquired chemoresistance. These observations were further complementarily strengthened by data obtained from chemosensitive cancer cells with artificially elevated Hh pathway activity.

Conclusions: Hence, our data demonstrate that GPCR-like signaling mediated by Smo contributes to the acquired chemoresistance through activating the canonical Hh transcriptional factor Gli; therefore improving our knowledge of the nature of the signal transduction of Smo and the molecular mechanisms responsible for the acquired chemoresistance maintained by Hh pathway. Moreover, our data that JNK after activated by Smo-G β γ signaling axis may stimulate the Gli activity and consequently promotes acquired chemoresistance expose a promising and potential target for developing anti-cancer drugs aimed at Hh pathway and for combating the acquired resistance raised by using of anti-cancer drugs targeting Smo.

Keywords: Smoothed, GPCR, JNK, Gli, Acquired chemoresistance

Introduction

The Hedgehog (Hh) signaling pathway plays critical roles for embryonic development and postnatal tissue homeostasis in organisms ranging from insects to mammals [1]. The activation Hh pathway is initiated by binding of the secreted Hh proteins, including Sonic, Indian and Desert Hedgehog (SHh, IHh and DHh, respectively) to the 12-transmembrane receptor Patched (Ptch), thereby liberating the Ptch-mediated inhibitory effect on Smoothed (Smo), a 7-pass transmembrane protein and a key component in the Hh signaling pathway. This subsequently causes the accumulation of Smo in the primary cilium and a series of consequent intracellular events, finally resulting in the activation of the canonical transcriptional factor Gli which consists of Gli1, Gli2

and Gli3 [2]. Analogous to other pathways active during embryonic development, inappropriate Hh pathway activity has been demonstrated to be critical for the initiation and progression of various kinds of tumors. Aberrant Hh pathway activity for tumors may occur either by mutations in key components of Hh pathway or by the production of Hh ligands in tumor cells in an autonomous and non-autonomous manner [3].

Given that the addiction of many types of tumors to aberrant Hh pathway activity, a variety of antagonists targeting Hh pathway have been developed for the treatment of cancers. Among them, the majority function as inhibitors of Hh pathway by targeting Smo, a critical component for canonical Hh pathway [4]. In this regard, dissecting the characteristics of signal transduction elicited from Smo is crucial and an area of intense investigation, as it may help us with the development of antagonists targeting Smo and its downstream effectors.

* Correspondence: wftan@fudan.edu.cn
Department of Pharmacology, School of Pharmacy, Fudan University, 826 Zhangheng Road, Shanghai 201203, P.R. China

Smo, which possesses a structural similarity with classic G-protein coupled receptors (GPCR), has long been suggested to couple with heterotrimeric G proteins [5-7]. Indeed, it has been shown that Smo may interact with G α i and subsequently activate the transcriptional activity of Gli (Ci in *Drosophila* cells) in *Drosophila* C18 cells, Sf9 cells, and NIH3T3 cells, indicating the requirement of G α i for the activation of Gli mediated by Smo [8,9]. However, this argument is challenged by the observations that *pertussis toxin* (PTX), which may ADP-ribosylate and consequently uncouple Gi from GPCR, fails to impact the Gli-dependent biological events such as chick neural tube patterning and some patterning events in zebrafish embryonic development [5,10]. On the other hand, after coupled to G α i, Smo may exert a variety of biological activities independently of Gli, such as migration of murine embryonic fibroblasts, tubulogenesis of endothelial cells, and calcium spike activity of embryonic spinal cells [11-13]. Moreover, recent study indicate that Smo may contribute to the survival of diffuse large B-cell lymphoma cells by coupling to G α i and G α 12 and subsequently activate NF- κ B independently of Gli [14]. These studies suggest that the association between heterotrimeric G α i proteins and Smo remains far from being fully understood, especially in the context of cancer biology. Meanwhile, in the case of canonical signal transduction of GPCR, ligand binding causes conformational changes in the structure of GPCRs, endowing them with abilities to function as a guanine nucleotide exchange factor (GEF). The exchange of GDP for GTP at the G α subunit induces its dissociation from G $\beta\gamma$ dimer [15]. To our knowledge, whether and how G $\beta\gamma$, after dissociated from G α subunit, may impact the Smo dependent Gli activity remains as well unclear.

Although great achievements have been made for the molecular-targeted anti-cancer drugs, traditional chemotherapy is still one of the most efficient approaches for treatments of cancers. Many studies have shown that Hh signaling pathway activity plays critical roles in maintaining the chemoresistant phenotype of acquired chemoresistant cancer cells [16-23]. In this study, utilizing well established acquired chemoresistant cancer cell lines and their respective parental ones, we provide a series of complementary evidences to show that Smo may promote acquired chemoresistance by activating Gli through G α i and G $\beta\gamma$ -JNK signaling axis, therefore revealing that GPCR-like signaling elicited from Smo is involved in the canonical Hedgehog-Gli signaling pathway activation and the acquired chemoresistance.

Materials and methods

Drugs

Doxorubicin (Dox), Vincristine (VCR), Etoposide (VP16), Imatinib were purchased from Sigma-Aldrich (St. Louis,

MO). The Hedgehog pathway antagonists cyclopamine (cyc), Robotnikinin (Robo) and GANT58 were obtained from Biovision (Milpitas, CA). The Gi antagonist Pertussis Toxin (PTX) was obtained from Invitrogen (Grand Island, NY). The JNK pathway antagonist TAT-TI-JIP was obtained from Calbiochem (Darmstadt, Germany). The agonist of Hh pathway SAG was obtained from Selleck Chemicals (Houston, TX).

Cell culture

The K562 human chronic myelogenous leukemia cell line, KB human epidermoid carcinoma cell line, NIH-3 T3 mouse embryo fibroblast cells, and HEK293T human epithelial kidney cells were purchased from the American Type Culture Collection and cultured according to the manufacturer's instructions. The Dox selected multidrug tolerant K562/A02 subline was obtained from the Institute of Hematology, Chinese Academy of Medical Sciences (Tianjin, China), which was routinely maintained in medium containing 200 ng/ml of Dox [24]. The VCR selected multidrug tolerant KB/VCR subline was obtained from Zhongshan University of Medical Sciences (Guangzhou, China) and was routinely maintained in medium containing 200 ng/ml of VCR [25]. Both resistant cells were authenticated by comparing their fold resistance with that of the parental cells and examining the expression levels of ABC transporters. All experiments using K562/A02, and KB/VCR cells were performed with cells growing in the absence of Dox or VCR for at least 5-7 days to avoid drug associated secondary effects.

Plasmid constructions and lentivirus

8 \times Gli-binding site luciferase reporter (8 \times GBS-luciferase) and 8 \times mutant Gli-binding site luciferase reporter (8 \times GBS-luciferase mutant) plasmids were kindly provided by Dr. Hiroshi Sasaki. pRL-*Renilla* luciferase plasmid was purchased from Promega (Madison, WI). The mutant mouse plasmids SmoA1 (W539L) was generated from pEGFP-mSmo (a kind gift from Dr. Philip Beachy) using QuikChange Site-Directed Mutagenesis kit from Agilent (Santa Clara, CA) and confirmed by sequencing. The SmoA1 was next engineered into pLVX-EGFP-3FLAG-Puro lentivector. The pCDNA3 Flag MKK7-JNK1, pCDNA3 Flag JNK1(APF) and pCDNA3 Flag MKK7-JNK1 (APF) plasmids were purchased from Addgene (Cambridge, MA) and confirmed by sequencing. These three plasmids were engineered into pLVX-EGFP-3FLAG-Puro lentivector. The PIRES2-ZsGreen1-G β 1, PIRES2-ZsGreen1-G γ 2, and PIRES2-ZsGreen1-G α transducin plasmids were purchased from Yrbio (Changsha, China) and were confirmed by sequencing. The G α transducin (Gat) plasmid was engineered into pLVX-EGFP-3FLAG-Puro lentivector.

Transient transfections were performed using Lipofectamine 2000 reagent (Invitrogen, Grand Island, NY) according to the manufacturer's instructions. The viral stocks were prepared and infections were performed according to previously reported [26].

Cell viability assay

The MTT assay was conducted as previously described to determine the sensitivity of cells to chemotherapeutic drugs [27].

Reverse transcription PCR (RT-PCR) and quantitative RT-PCR (QT-PCR)

Total RNA was extracted from cells by RNAiso Plus Kit from TaKaRa (Dalian, China) as the instructions provided by the manufacturer and processed directly to cDNA by reverse transcription using SuperScript III kit (TaKaRa). Semi-quantitative PCR amplification was carried out using Stratagene mx3005p (Agilent Technologies). The quantitative PCR reactions were performed in triplicate with the SYBR-Green kit (TaKaRa) in iCycler iQ system (Bio-Rad; Hercules, CA). After reaction, the PCR products were subjected to electrophoresis to ensure the amplification from mRNA but not contaminated genomic DNA. The mRNA levels of interested genes were normalized to that of *TATA*. Primers for the genes tested were obtained from Invitrogen (Shanghai, China): *SHh*: 5'-CAAGCAGTTTATCCCCAATGTG-3', 5'-TCACCCGCAGTTTCACTC-3'; *IHh*: 5'-TCAGCGA TGTGCTCATTTTC-3'; 5'-AGCCGTAAAGAGCAGG TGAG-3'; *DHh*: 5'-TGCCGCTACTCTACAAGCAA-3', 5'-GTTGTAGTTGGGCACGAGGT-3'; *Gli1*: 5'-GTGG GAAAGGTCTGGGATGT-3', 5'-TGCGCCTGTCTCA GAGTAAA-3'; *TATA*: 5'-ACCCTTCACCAATGACT CCTATG-3', 5'-TGACTGCAGCAAATCGCTTGG-3'.

Western blot analysis

Cells were lysed in lysis buffer (50 mM Tris, pH 7.4, 150 mM NaCl, 1% NP-40, 1 mM sodium vanadate, 1 mM PMSE, 1 mM DTT, 10 mg/ml of leupeptin and aprotinin) and subjected to immunoblot analysis. Primary antibodies against JNK, c-Jun, p-JNK, p-c-Jun, HA (Cell Signaling Technology; Beverly, MA), Flag, GAPDH (Santa Cruz Biotechnology; Santa Cruz, CA) were used for immunoblot analysis as standard procedure.

Dual-luciferase reporter assay

Cells were seeded into 48-well plates. Twenty-four hours later, cells were cotransfected with luciferase expression constructs as indicated and *Renilla* luciferase using Lipofectamine 2000 (Invitrogen). Luciferase activities present in cellular lysates after indicated treatments were measured using a Dual-Luciferase reporter assay system from Promega (Madison, WI) according to the manu-

facturer's instructions and a luminometer (Molecular Device; Sunnyvale, CA). The firefly luciferase values were normalized to *Renilla* values.

Statistical analysis

Statistical differences were analyzed by the two-tailed Student's t test and $P < 0.05$ was considered as significant. Asterisks denote statistical significance (* $P < 0.05$; ** $P < 0.01$; and *** $P < 0.001$).

Results

Acquired chemoresistant cancer cells exhibit aberrant cell-autonomous Hh pathway activity

The requirement of Hh pathway activity for maintaining the acquired chemoresistance indicates that acquired chemoresistant cancer cells may harbor aberrant Hh pathway activity via cell autonomous manner [3]. Elaborate verification of this argument is a prerequisite for dissecting the nature of the signal transduction from Smo to Gli in acquired chemoresistant cancer cells. In this regard, we first examined the expressions of ligands of Hh pathway in acquired chemoresistant cancer cells compared to their respective parental ones. Using two well established acquired chemoresistant cancer cells K562/A02, KB/VCR and their respective parental cells human chronic myelogenous leukemia cell line K562, human epidermoid carcinoma cell line KB, we found that the abundance of Hh ligands *SHh*, *IHh* and *DHh* were all obviously elevated when compared to their respective parental cancer cells as revealed by QT-PCR analysis (Figure 1A), suggesting the possibility of cell-autonomous Hh pathway activity harbored by acquired chemoresistant cancer cells. Next, we set out to evaluate whether the elevated production of Hh ligands correlates with the aberrant Hh pathway activity in acquired chemoresistant cancer cells using Gli-luciferase assay to rule out the non-cell autonomous Gli activation [3]. We observed that the chemoresistant cancer cells harbored aberrant Hh pathway activity relative to respective parental cells (Figure 1B). Meanwhile, treatment of acquired chemoresistant cancer cells with Robo and cyc, specific small molecular inhibitors targeting SHh and Smo, respectively [28,29], caused significant reductions of the aberrant Hh pathway activity in acquired chemoresistant cancer cells K562/A02 and KB/VCR, whereas both Robo and cyc did not affect Hh pathway activity in respective chemosensitive cells (Figure 1B). Moreover, tomatidine, a steroidal alkaloid structurally similar to cyc and lacking activity against Hh pathway [30], exhibited no effect on the Hh pathway activity in both chemoresistant and respective chemosensitive cancer cells (Figure 1B). These observations derived from Gli-luciferase reporter assay were faithfully recapitulated by QT-PCR analysis of the *Gli1* (Figure 1C), a transcriptional target of Hh pathway

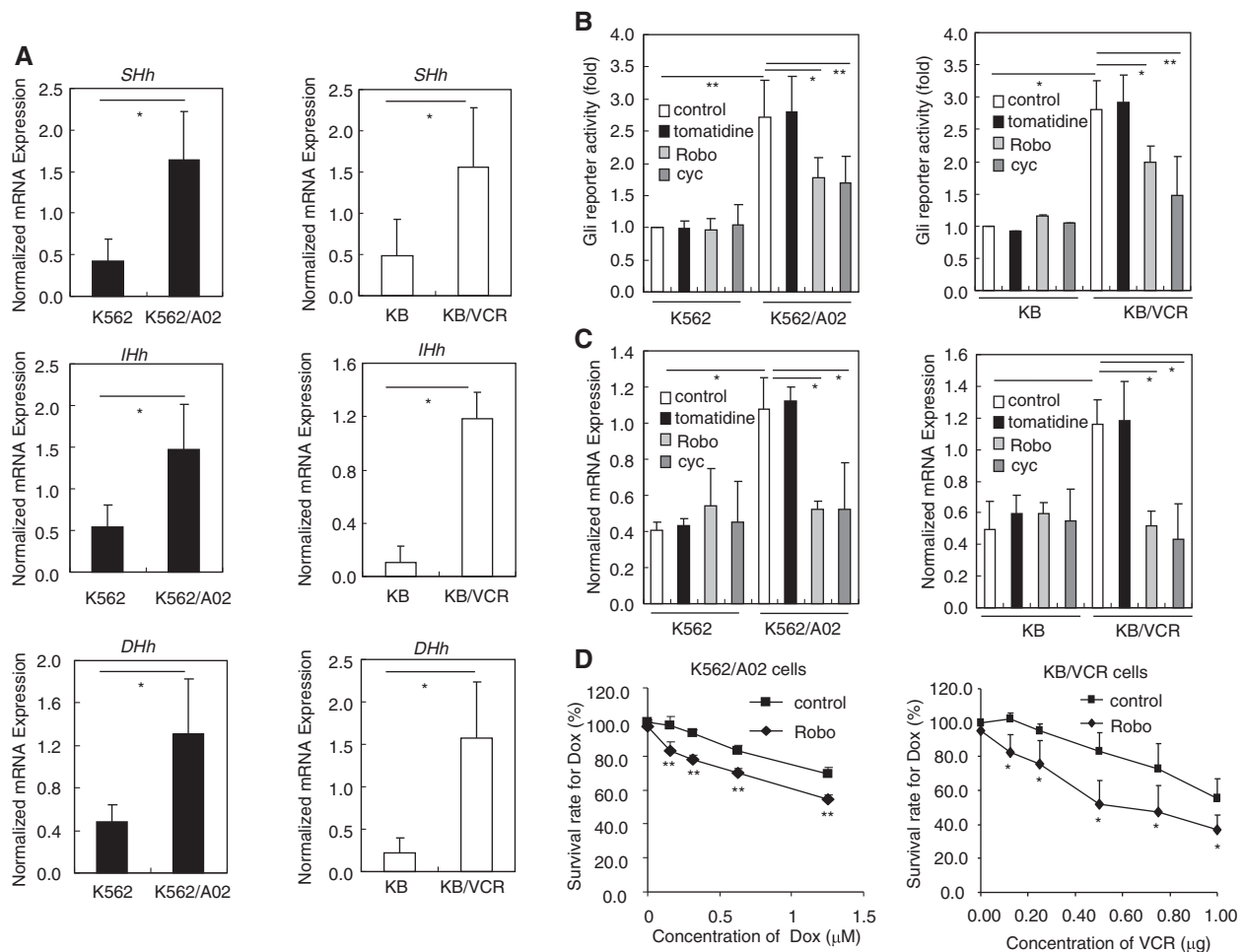


Figure 1 Acquired chemoresistant cancer cells exhibit aberrant cell-autonomous Hh pathway activity. Representative data from three independent experiments are expressed as mean \pm s.d. **A**, Expressions of Hh pathway ligands *SHh*, *IHh* and *DHh* in acquired chemoresistant cancer cells K562/A02 and KB/VCR compared to their respective parental cancer cells K562 and KB respectively by QT-PCR analysis. **B**, Gli Luciferase reporter activity in chemoresistant K562/A02 and KB/VCR cancer cells and their respective parental cancer cells K562 and KB determined by luciferase reporter assay. The cells (4×10^4) seeded into 48-well plates were transfected with Gli luciferase reporter and pRL-Renilla luciferase plasmids. After transfectinos for 24 h, the cells (around 100% confluency of adherent cells) in culture medium with 10% serum were further treated with tomatidine (10 μ M), Robo (10 μ M) and cyc (3 μ M) for 24 h. **C**, Expressions of the Hh pathway target genes *Gli1* in acquired chemoresistant K562/A02 and KB/VCR cancer cells and their respective parental cancer cells K562 and KB. The cells (2×10^5) were seeded into 6-well plates. After 24 h, the cells (around 100% confluency of adherent cells) in normal culture conditions were treated with tomatidine (10 μ M), Robo (10 μ M) and cyc (3 μ M) for 24 h were collected for examined by QT-PCR analysis. **D**, Treatment with the Robo circumvents the chemoresistance of K562/A02 cells and KB/VCR cells to Dox and VCR respectively. K562/A02 cells and KB/VCR cells were seeded into 96-well plates and incubated with Dox or VCR supplemented with or without various concentrations of Robo for 72 h.

and served as readout of the Hh pathway activity. Considering that the chemoresistant cancer cells harbor aberrant cell-autonomous Hh pathway activity, it is conceivable that interference Hh pathway by targeting its ligands may sensitize acquired chemoresistant cancer cells to chemotherapy. Indeed, we found that exposure of chemoresistant cancer cells K562/A02, KB/VCR to Robo resulted in obviously sensitizing them to Dox and VCR, respectively (Figure 1D), while Robo treatment failed to impact the sensitivity of K562 and KB cells to Dox and VCR (data not

shown). Hence, these data together clearly demonstrate that chemoresistant cancer cells harbor cell-autonomous Hh pathway activity.

Gai and G β y are involved in mediating the Hh pathway activity in chemoresistant cancer cells

Having established that acquired chemoresistant cancer cells harbor cell-autonomous Hh pathway activation and represent ideal models for dissecting the signal transduction nature of Hh pathway, we then asked whether and

how Smo may transmit GPCR-like signaling and consequently promote chemoresistance by activating Gli. Considering that Smo may couple to G α i in *Drosophila* Cl8 cells, Sf9 cells, and NIH3T3 cells [8,9], we first set out to examine whether interference with G α i may repress the Gli activity in chemoresistant cancer cells. Exposure of chemoresistant cancer cells to PTX, which may uncouple G α i from receptor activation by ADP-ribosylating G α i [31], obviously suppressed the transcriptional activity of Gli in K562/A02 cells and KB/VCR cells as revealed by Gli-luciferase reporter assay (Figure 2A), indicating the involvement of G α i in the Gli activation mediated by Smo in chemoresistant cancer cells. We next investigated the contribution of G $\beta\gamma$ to the activation of Gli in chemoresistant cancer cells by ectopic expression of Gat, which may quench G $\beta\gamma$ upon dissociated from G α i, thereby blocking the function of G $\beta\gamma$ [32]. As expected, ectopic expression of Gat in K562/A02 cells and KB/VCR cells obviously suppressed the Gli-luciferase reporter activity (Figure 2B), thus indicating the participation of G $\beta\gamma$ in Gli activation. To further provide direct evidences for the argument that both G α i and G $\beta\gamma$ are involved in mediating the signal from Smo to Gli, we asked whether intervention of G α i and G $\beta\gamma$ may inhibit the Gli activation in response to SAG, a specific small molecular agonist of Smo [33]. SAG exposure provoked abundant Gli-luciferase reporter activity in KB/VCR cells (Figure 2C,D), whereas PTX (Figure 2C) and Gat (Figure 2D) obviously reduced the Gli-luciferase activity in response to SAG. These observations obtained by using KB/VCR cells were well recapitulated in NIH-3 T3 cells exposed to SAG (Figure 2E-F). Moreover, we observed that transfection of G β 1 and G γ 2 plasmids into NIH-3 T3 cells remarkably stimulated the Gli-luciferase reporter activity (Figure 2G); further demonstrating that G α i and G $\beta\gamma$ upon dissociated from G α i may transmit the signal from Smo to Gli. Taking these results together, we can conclude that Smo may couple to G α i and both G α i and G $\beta\gamma$ are involved in activating Gli mediated by Smo in chemoresistant cancer cells.

Next, we examined whether interference with G α i and G $\beta\gamma$ may circumvent the chemoresistance of acquired chemoresistant cancer cells. We found that treatment of KB/VCR cells (Figure 2H) with PTX or ectopic expression of Gat into K562/A02 cells (Figure 2I) by lenti-virus approach resulted in remarkably sensitizing the KB/VCR cells and K562/A02 cells to chemotherapeutic drugs VCR and Dox, respectively. Moreover, these reversals of acquired chemoresistance elicited by PTX and Gat were accompanied by the repressions of Hh pathway activity in KB/VCR cells and K562/A02 cells as reflected by the reductions of transcript levels of *Gli1* (Figure 2J-K). Meanwhile, we observed that treatment of

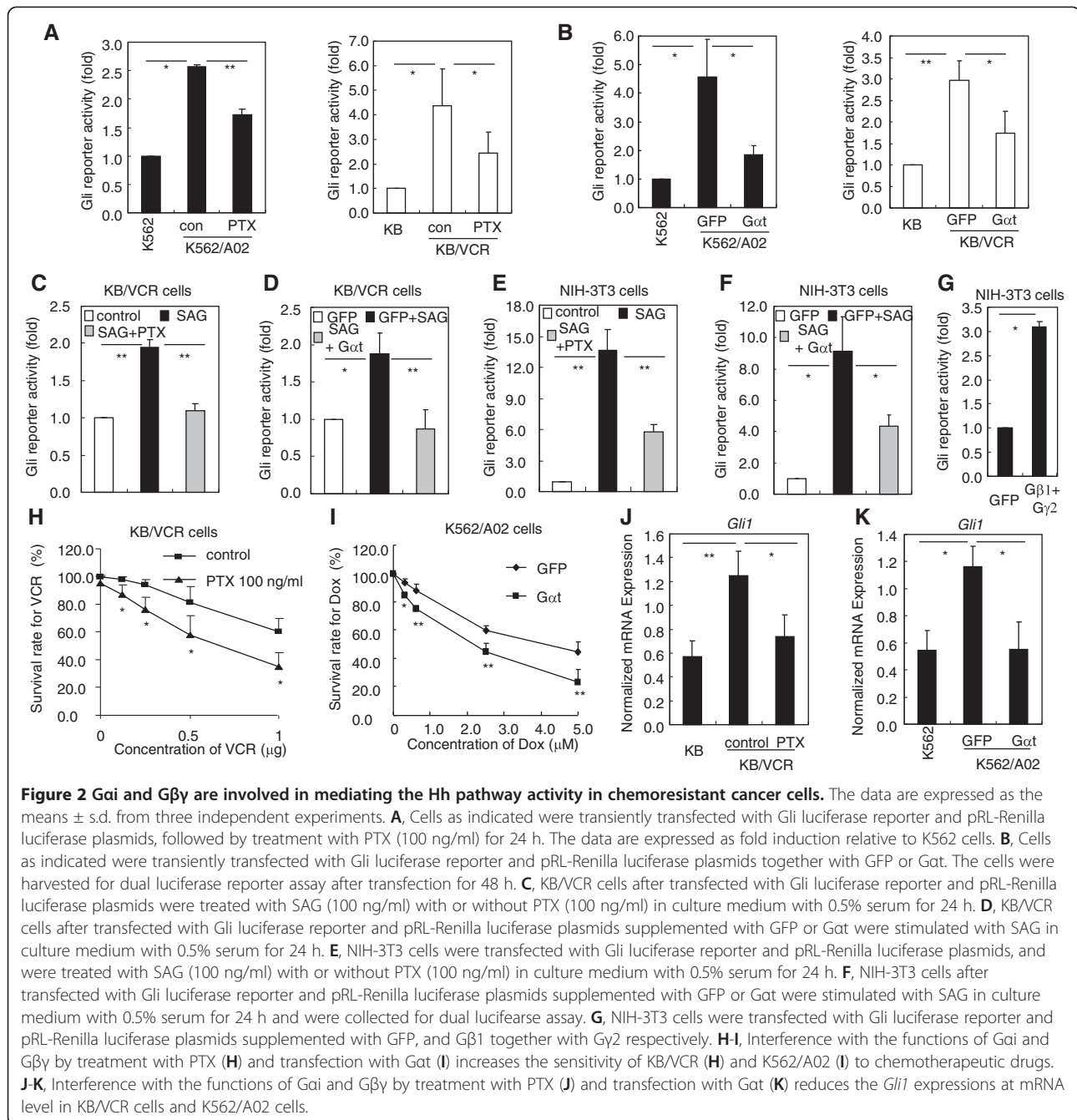
K562 and KB cells with PTX or transfection of Gat did not increase the sensitivity of K562 and KB cells to chemotherapy (data not shown). Therefore, these data further demonstrate that G α i and G $\beta\gamma$ are required for Smo-mediated Gli activation and consequently for Gli-dependent chemoresistance in acquired chemoresistant cancer cells.

G α i and G $\beta\gamma$ are required for the chemoresistance promoted by reconstituted Hh pathway activity in KB cells

We next set out to provide complementary evidences for the notion that Smo may couple to G α i and both G α i and G $\beta\gamma$ may be involved in the Gli-dependent acquired chemoresistance mediated by Smo in chemoresistant cancer cells. Taking advantage of the lenti-virus approach, we constitutively activated the Hh pathway activity in chemosensitive cancer cells KB by ectopic expression of a Flag-tagged mouse mutant plasmid Smo (W539L, SmoA1), a frequent mutation in Smo which causes constitutive activation of Hh pathway in medulloblastoma cancers [34]. Ectopic expression of Flag-tagged SmoA1 in KB cells (Figure 3A) caused the KB cells insensitive to VCR treatment (Figure 3B), and concomitant activation of the Hh pathway activity in KB cells as judged by the increased expression of *Gli1* at mRNA level (Figure 3C). Of interest, PTX treatment or expression of HA-tagged Gat by lenti-virus approach (Figure 3A) restored the sensitivity of KB cells with forced expression of SmoA1 to VCR (Figure 3B,D), paralleling the reductions of expression of *Gli1* at mRNA level (Figure 3C,E). Thus, these results together further strengthen that G α i is coupled to Smo and both G α i and G $\beta\gamma$ are involved in the Gli activation mediated by Smo and subsequently in maintaining the chemoresistance phenotype.

G $\beta\gamma$ may promote Gli activity through JNK in chemoresistant cancer cells

JNK is a well known downstream effector of G $\beta\gamma$ [35]. We then asked whether G $\beta\gamma$, when released from G α i after Smo activation, may activate Gli via JNK. To this end, we first tested whether inhibition of the Hh pathway may repress JNK activation in chemoresistant cancer cells. Exposure of K562/A02 cells with Robo (Figure 4A) or treatment of K562/A02 cells and KB/VCR cells with cyc (Figure 4B) led to reductions of the phosphorylation of JNK, indicating that Hh signaling may activate JNK in chemoresistant cancer cells. This was further supported by the observation that SHh significantly provoked JNK activation in 293 T cells, reaching a maximum at 10 min (Figure 4C). Next, we set out to determine the requirement of JNK activation for Gli activity in chemoresistant cancer cells. Inhibition of JNK in K562/A02 cells by JIP (Figure 4D), a peptide inhibitor specifically targeting JNK [36,37], or by transfection



K562/A02 and KB/VCR cells (Figure 4E) with JNK1 (APF), a plasmid of dominant negative mutant of JNK [38], abundantly impaired the Gli activity in chemoresistant cancer cells as judged by Gli-luciferase reporter assay, therefore suggesting that JNK is required for maintaining the cell-autonomous Gli activation in acquired chemoresistant cancer cells. This argument was further confirmed by the results that JIP obviously abolished the Gli activity provoked by SAG in KB/VCR cells (Figure 4F). Together, these findings suggest that JNK is

involved in the cell-autonomous Gli activation in chemoresistant cancer cells.

We next set out to examine whether *Gβγ* may activate Gli though JNK in acquired chemoresistant cancer cells. We observed that treatment of chemoresistant cancer cells K562/A02 (Figure 5A) and KB/VCR (Figure 5B) with PTX or with transfection of *Gat* resulted in decreasing the phosphorylation of JNK. Furthermore, PTX and *Gat* remarkably abolished the phosphorylation of JNK in response to SAG in chemoresistant cancer cells

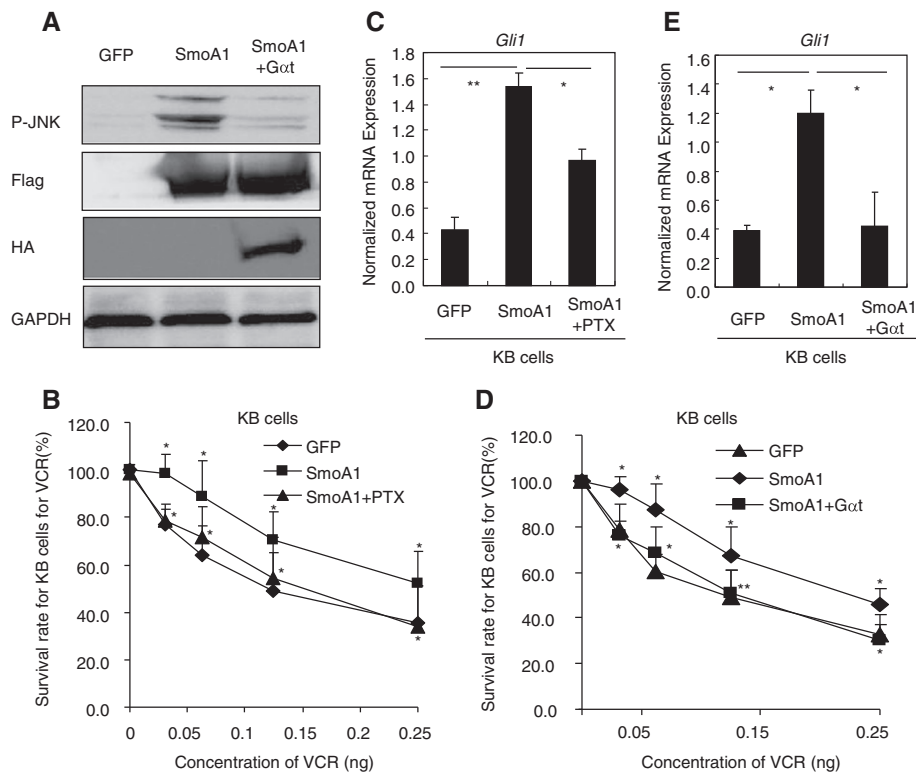


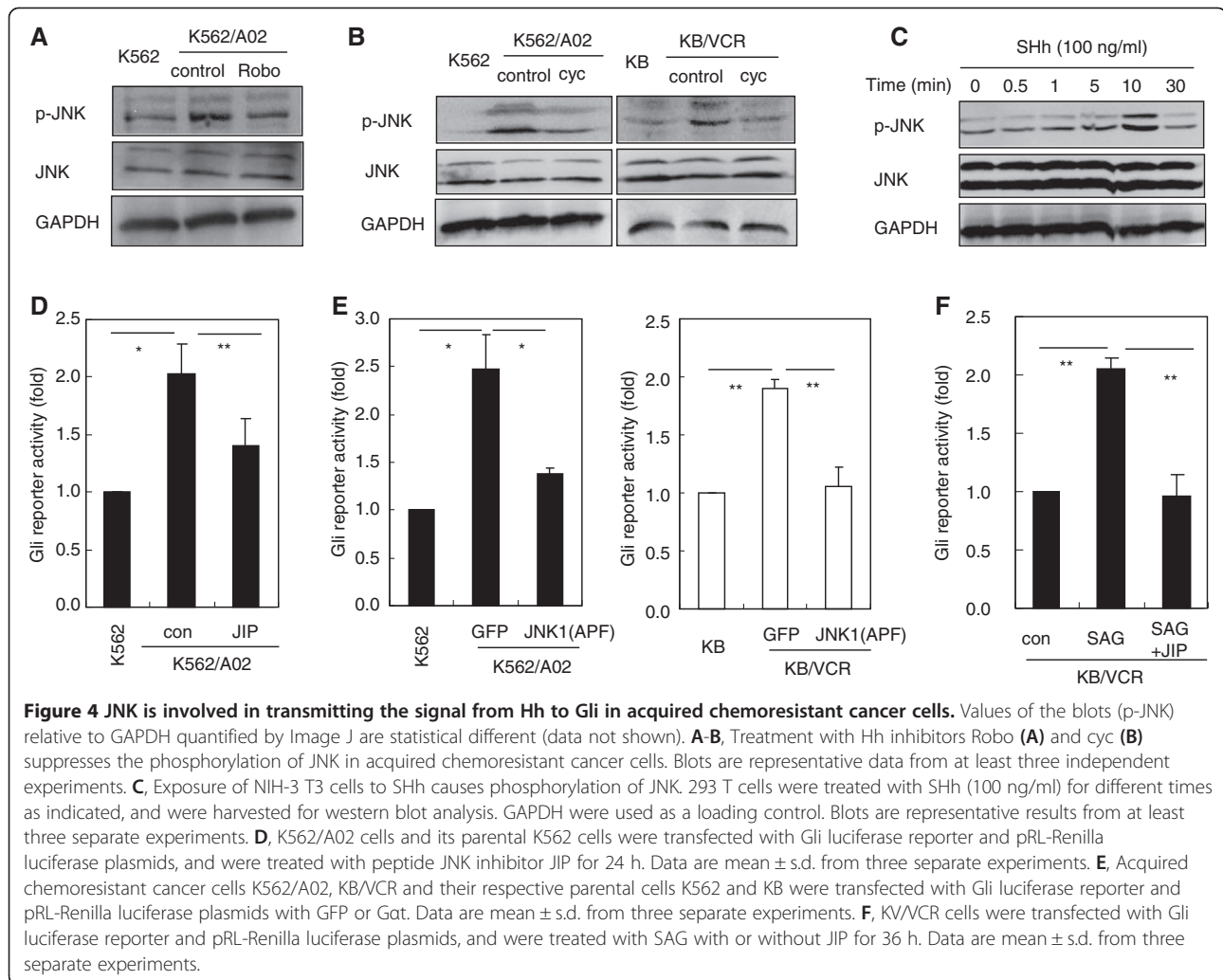
Figure 3 *Gai* and *Gβγ* are involved in the chemoresistance of KB cells with forced expression of SmoA1 by activating Gli. KB cells were infected with lenti-virus harboring GFP, Flag-tagged SmoA1, and Flag-tagged SmoA1 plus Gat with a HA tag. **A**, Western blot analysis of p-JNK, Flag tagged SmoA1 and HA tagged Gat. **B**, SmoA1 causes KB cells insensitive to VCR, while PTX (100 ng/ml) treatment recovers the sensitivity of KB cells with forced expression of SmoA1 to VCR. Data are expressed as average \pm s.d. from three separate experiments. **C**, SmoA1 enhances the expression of *Gli1* at mRNA level, while PTX treatment for 24 h abolishes this enhancement of *Gli1* expression at mRNA level. The results are expressed as the means \pm s.d. from three to four independent experiments. **D**, SmoA1 causes KB cells insensitive to VCR, while co-expression of Gat with SmoA1 by lenti-virus approach circumvents this tolerance to VCR. Data are expressed as average \pm s.d. from three separate experiments. **E**, SmoA1 increases the expression of *Gli1* at mRNA level in KB cells compared to GFP cohort, while co-expression of Gat with SmoA1 reduces the expression of *Gli1*. The results are expressed as the means \pm s.d. from three to four independent experiments.

K562/A02 (Figure 5C,D). Hence, these results suggest that *Gβγ* may mediate Gli activation elicited by Smo through JNK. This argument was further strengthened by the observation that JIP significantly inhibited the Gli-luciferase reporter activity provoked by transfection of *Gβ1* and *Gγ2* subunits into NIH-3T3 cells (Figure 5E). Collectively, our findings demonstrate that after released from *Gαi*, *Gβγ* may activate Gli via JNK in chemoresistant cancer cells.

JNK activity is required for maintaining the chemoresistance maintained by Hh pathway

Having established that *Gβγ* may transduce the signaling from Smo to Gli via activating JNK in chemoresistant cancer cells, we next tested the biological relevance of Gli activation mediated by JNK to chemoresistance using acquired chemoresistant cancer cells. We saw that interference of JNK function with JIP or with forced expression of JNK dominant negative mutant JNK1a1 (APF) by

lenti-virus approach significantly sensitized the K562/A02 cells to Dox (Figure 6A,C), concomitantly accompanying the reductions of the expressions of *Gli1* at mRNA level (Figure 6B,D). Given that JNK may promote chemoresistance through activating Gli, it is conceivable that artificial activation of JNK in chemosensitive cancer cells may result in Gli activation and subsequently chemoresistance. Indeed, taking advantage of the MKK7 and JNK1 fusion plasmid (MKK7-JNK1) engineered into a lenti-virus vector, which may activate JNK activity [39], we observed that artificial JNK activation rendered chemosensitive cancer cells K562 tolerant to Dox (Figure 6E), simultaneously increasing the Gli activity as reflected by QT-PCR analysis of the *Gli1* expression (Figure 6F); while the negative control MKK7-JNK1(APF) for MKK7-JNK1 did not impact either the sensitivity of K562 cells to Dox (Figure 6E) or the expression of *Gli1* at mRNA level (Figure 6F). Interestingly, GANT58, a small molecular antagonist specifically targeting Gli [40], restored the sensi-



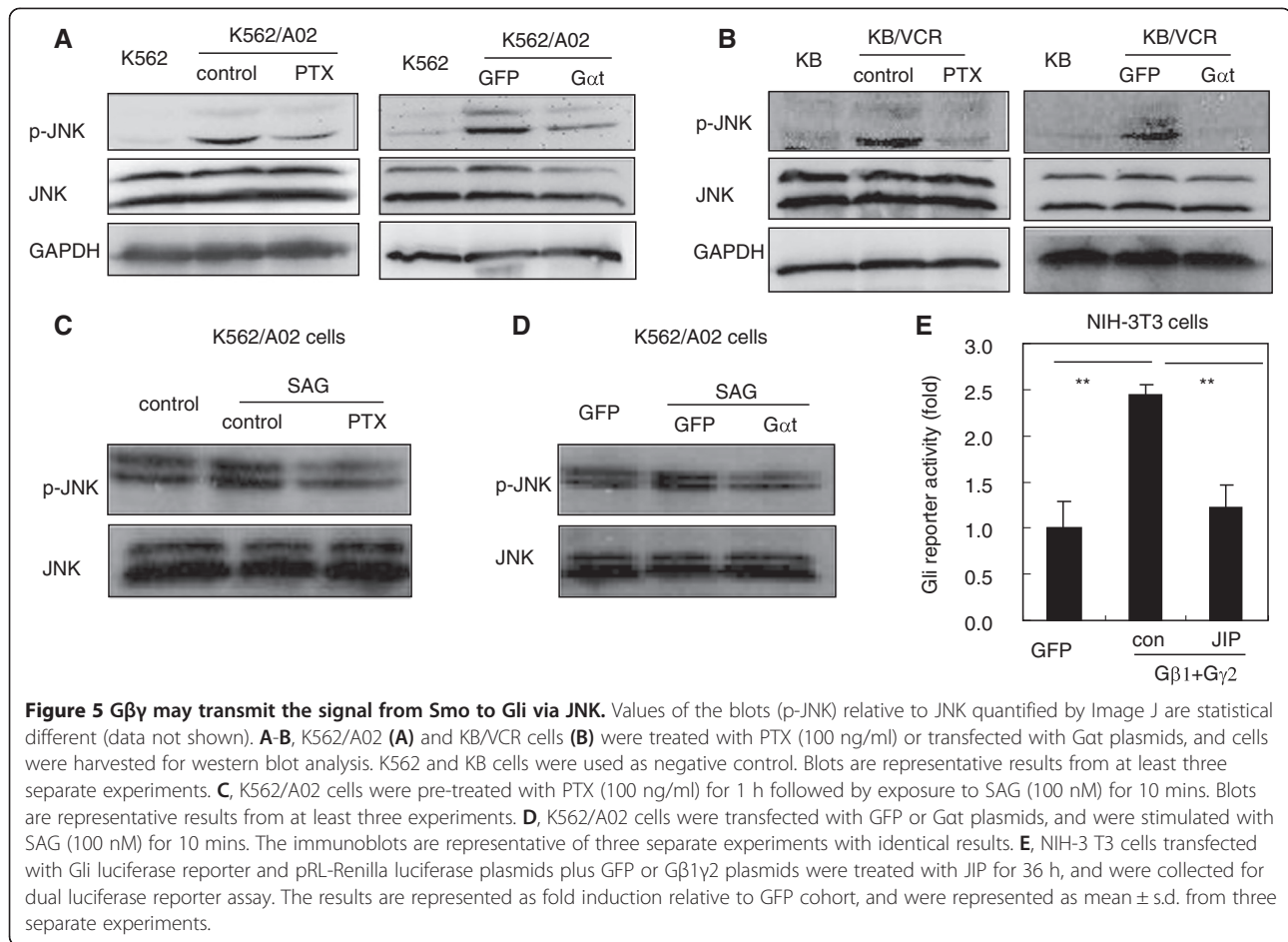
vity of K562 cells with ectopic expression of MKK7-JNK1 to Dox (Figure 6E). Taken together, these results complementarily demonstrate that JNK may activate Gli in chemoresistant cancer cells, thereby maintaining the chemoresistance phenotype.

We next investigated whether the JNK activation is required for the chemoresistance promoted by ectopic expression of SmoA1. To this end, we artificially activated the Hh pathway activity using SmoA1 in K562 cells by lenti-virus approaches, like did in KB cells. Ectopic expression of SmoA1 in K562 cells resulted in obvious phosphorylations of JNK and its canonical downstream effector c-Jun, whereas JNK dominant negative mutant JNK1(APF) diminished these phosphorylations (Figure 7A), confirming the inhibitory effect of JNK1(APF) on the function of JNK. Similar to the observations obtained in KB cells, SmoA1 caused chemoresistance of K562 cells to Dox (Figure 7B), VP16 (Figure 7C) and BCR-ABL tyrosine kinase inhibitors Imatinib (Figure 7D), simultaneously accompanying increased Hh pathway activity as reflected by

enhancement of *Gli1* mRNA expression (Figure 7E). Moreover, JNK1 (APF) restored the sensitivity of the K562 cells with artificial elevated Hh pathway to Dox, VP16 and Imatinib (Figure 7C-D), concomitantly reducing the expression of Gli1 provoked by SmoA1 (Figure 7E). Collectively, our findings further confirm that JNK is involved in the chemoresistance mediated by Hh pathway and that after dissociation from Gai initiated by Smo activation, Gβγ may stimulate the Gli activity through JNK and subsequently promote chemoresistance.

Discussion

Hh signaling pathway has been shown to be critical for a variety of physiological and pathological conditions, such as embryonic patterning, maintenance of postnatal tissue homeostasis, as well as initiation and progression of cancers [41], whereas the molecular mechanisms responsible for its signaling transduction remain to be fully understood. Because of the structural homology with classical GPCRs, Smo has been suspected to have the



ability to couple with heterotrimeric G proteins Gai [5-7]. However, the contribution of Gai to the Hh signaling transduction is quite controversial and unclear, especially in the cancer biology. Information available so far suggests that it is context-dependent and cell-type dependent for the ability of Smo coupling to Gai and for the subsequent participation of Gli in the biological significance initiated by the interaction of Smo and Gai [42,43]. In the present study, we provide complementary evidences to show that both Gai and Gβγ are required for the Hh pathway activity and the subsequent acquired chemoresistance by activating its canonical transcriptional factor Gli, confirming the ability of Smo coupling to Gai and the requirement of Gai for the Gli-dependent biological significance in the context of acquired chemoresistance. Moreover, we found that Gβγ, after released from Gai, are also be involved in the Gli activation and acquired chemoresistance through activating JNK. Indeed, by artificially increasing the Hh pathway activity in chemosensitive cancer cells, we determined that both Gai and Gβγ-JNK signaling axis are required for the Gli activity and Gli-dependent acquired chemoresistance mediated by SmoA1. Our data that

GPCR-like signaling mediated by Smo contributes to the acquired chemoresistance by activating Gli improve our interpretations of the underlying mechanisms for the acquired chemoresistance promoted by Hh pathway and help us with improving the chemotherapeutic efficiency by using Hh inhibitors [44]. Meanwhile, this study shed light on the understanding the nature of signaling transduction of Smo in cancer biology.

Deregulated Hh signaling has been implicated in a wide range of cancers, such as medulloblastoma, basal cell carcinoma, glioblastoma, leukemia, breast cancer, pancreatic cancer, prostate cancer, lung cancer, colon cancer, to name a few [45]. Aberrant Hh pathway activity may result from gain-of-function and loss-of-function mutations in key components in Hh pathway, such as PTCH, Smo, and Sufu [3]. Hh pathway may as well be activated in tumors by overexpression of Hh ligands functioning in a cell-autonomous or non-cell autonomous manner. However, the activation of Hh pathway in tumor cells via a cell-autonomous manner is challenged by many controversial observations and remains to be fully elucidated [3], for example, the inability of mutationally activated Smo expressed in pancreatic epithelial

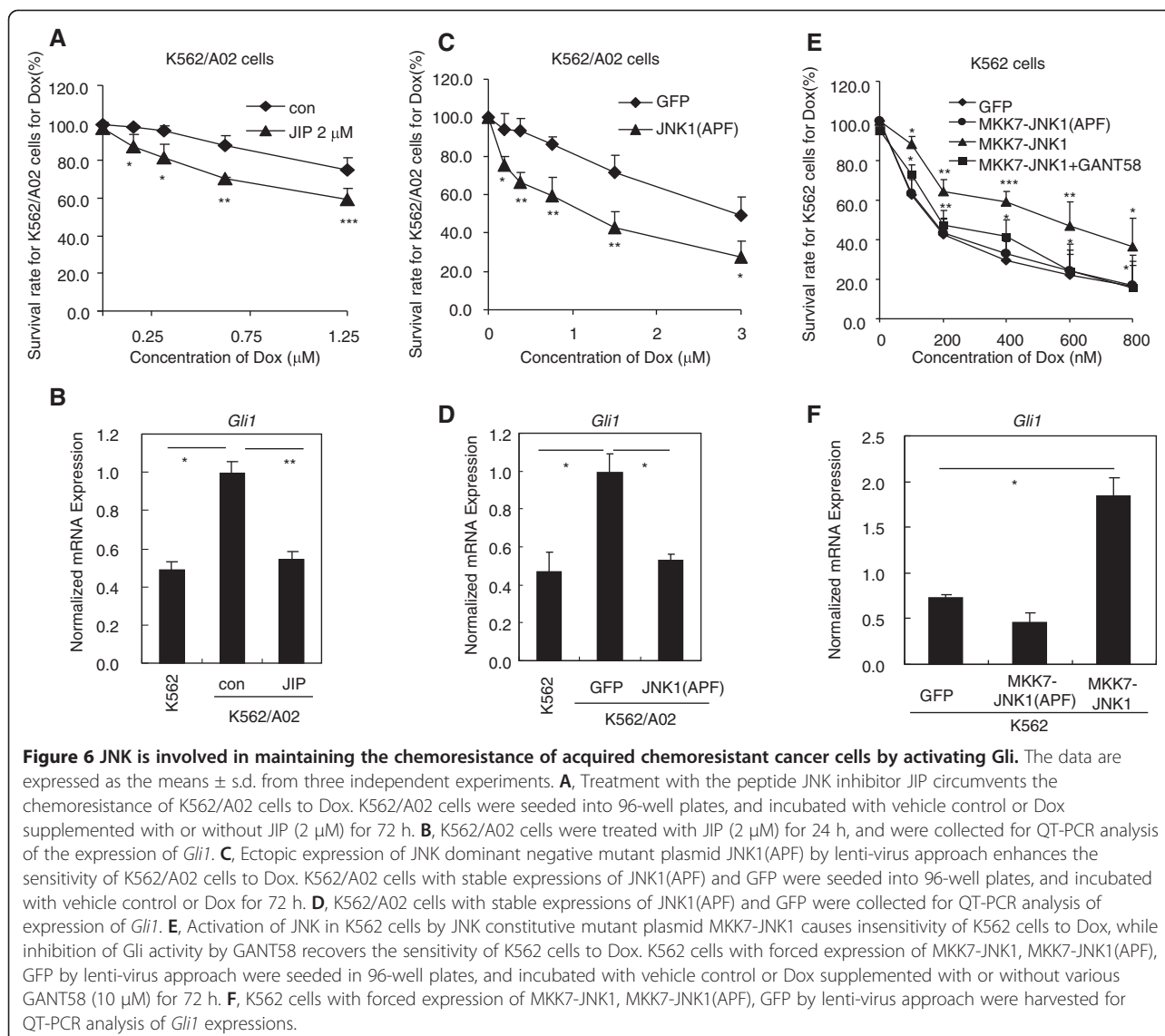
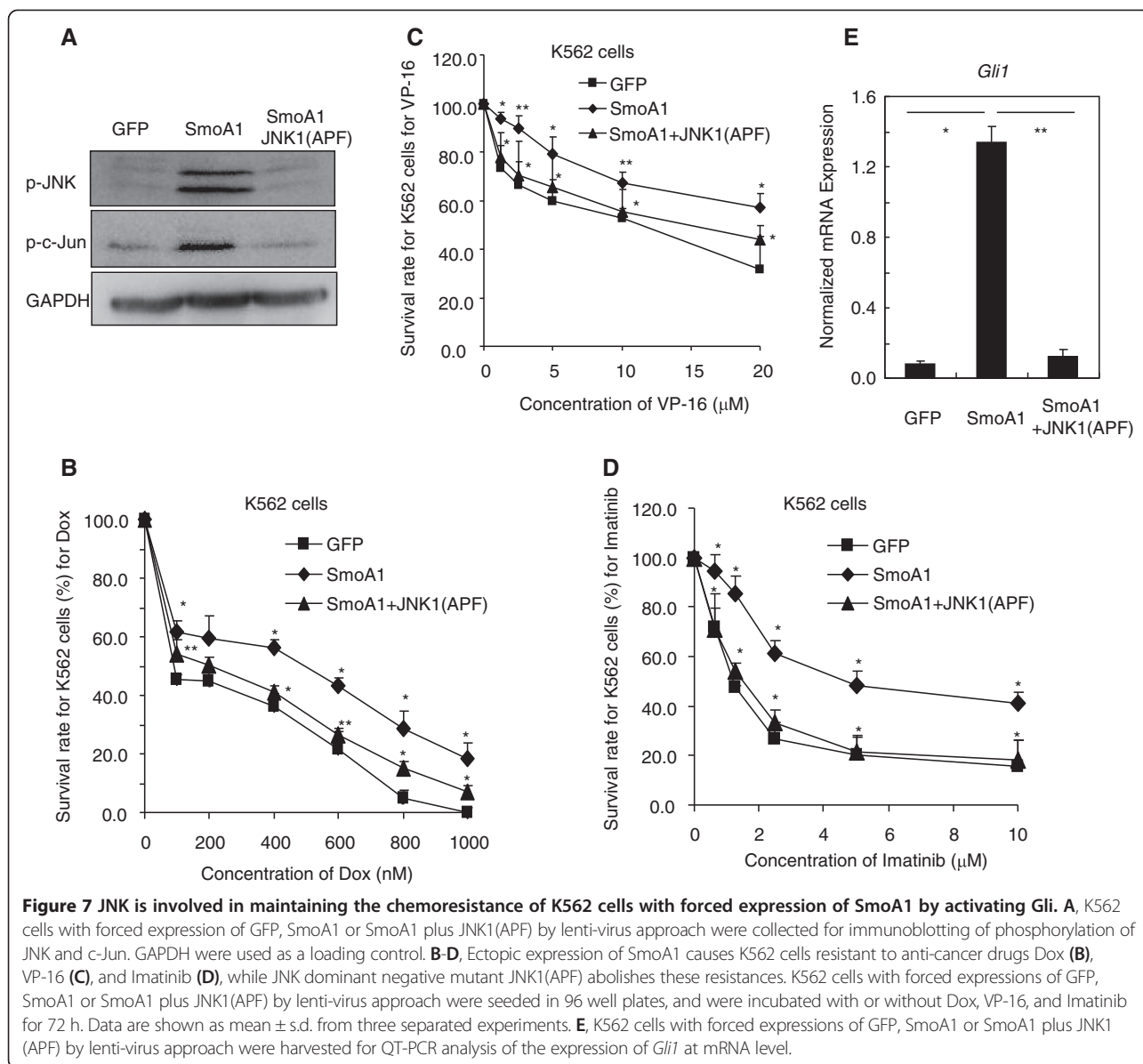


Figure 6 JNK is involved in maintaining the chemoresistance of acquired chemoresistant cancer cells by activating Gli. The data are expressed as the means \pm s.d. from three independent experiments. **A**, Treatment with the peptide JNK inhibitor JIP circumvents the chemoresistance of K562/A02 cells to Dox. K562/A02 cells were seeded into 96-well plates, and incubated with vehicle control or Dox supplemented with or without JIP (2 μ M) for 72 h. **B**, K562/A02 cells were treated with JIP (2 μ M) for 24 h, and were collected for QT-PCR analysis of the expression of *Gli1*. **C**, Ectopic expression of JNK dominant negative mutant plasmid JNK1(APF) by lenti-virus approach enhances the sensitivity of K562/A02 cells to Dox. K562/A02 cells with stable expressions of JNK1(APF) and GFP were seeded into 96-well plates, and incubated with vehicle control or Dox for 72 h. **D**, K562/A02 cells with stable expressions of JNK1(APF) and GFP were collected for QT-PCR analysis of expression of *Gli1*. **E**, Activation of JNK in K562 cells by JNK constitutive mutant plasmid MKK7-JNK1 causes insensitivity of K562 cells to Dox, while inhibition of Gli activity by GANT58 recovers the sensitivity of K562 cells to Dox. K562 cells with forced expression of MKK7-JNK1 (APF), GFP by lenti-virus approach were seeded in 96-well plates, and incubated with vehicle control or Dox supplemented with or without various GANT58 (10 μ M) for 72 h. **F**, K562 cells with forced expression of MKK7-JNK1, MKK7-JNK1(APF), GFP by lenti-virus approach were harvested for QT-PCR analysis of *Gli1* expressions.

to initiate pancreatic cancer [46]. In this study, we used the well established acquired chemoresistant cancer cell lines as an experimental model system for investigating the contribution of heterotrimeric G proteins and their downstream effectors to Gli activation mediated by Smo. Our data clearly demonstrate that acquired chemoresistant cancer cells harbor aberrant Hh pathway activity in a cell-autonomous manner, thus increasing our knowledge about the mechanisms behind Hh activation in cancers. On the other hand, many studies have shown the loss of Hh pathway activity in cancer cells possessing elevated Hh pathway activity after cultured *in vitro* [47-49], arguing against the use of *in vitro* cultured cancer cell lines for many kinds of investigations related to Hh pathway in cancer biology, ranging from dissecting molecular mechanisms underlying Hh signaling transduction to pre-clinical evaluation of Hh inhibitors. In this regard, our data

that acquired chemoresistant cancer cells harbor aberrant Hh pathway activity in a cell-autonomous manner identify acquired chemoresistant cancer cell lines as potential and useful *in vitro* experimental model systems for investigations related to Hh pathway in cancer biology.

How does the Smo-coupled *Gai* signaling link the transcriptional factor Gli in chemoresistant cancer cells? In the case of classical GPCR signaling transduction, the exchange of GDP for GTP at *Gai* subunit results in the activation of *Gai*, thereby repressing the adenylyl cyclase and subsequently decreasing the conversion of ATP to cAMP. Reduced cAMP level implies downregulation of the activity of PKA [15]. Considering that PKA is the key determinant for proteasome proteolysis of Gli by phosphorylating it at multiple sites [50,51], we can envision that *Gai* after activated by Smo signaling may protect Gli from proteasome degradation by inhibiting the



activity of PKA in chemoresistant cancer cells in despite of required further verifications. On the other hand, in the case of classic GPCR signaling transduction, the $G\beta\gamma$ dimer after releasing from $G\alpha_i$ may stimulate a couple of downstream effectors, such as PKC, PI3K and JNK [35]. Data from other labs indicate that dissociated $G\beta\gamma$ dimer initiated by Smo signaling may potentially promote the activation of Gli via PKC and PI3K in chemoresistant cancer cells [52-55]. However, in the present study, we provide complementary evidences showing that Smo may as well promote the activation of Gli via $G\beta\gamma$ -JNK signaling axis. Hence, our data together with that from other labs suggest that Smo utilizes the G protein signaling to its full potential for activating the transcriptional factor Gli.

JNK, a key member of the family of MAPKs, is also called stress activated protein kinase (SAPK) and can be activated by environmental and genotoxic stress and other extracellular stimulus [56]. JNK activation has also been linked to acquired chemoresistance by promotion of chemoresistance or by reversal of chemoresistance, relying on the duration and strength of the signaling [56,57]. Here, we show that JNK may function as a downstream effector of $G\beta\gamma$ for transmitting the signaling from Smo to Gli, thereby promoting the Gli-dependent acquired chemoresistance. Thus, this finding will help us with better understanding the role of JNK in acquired chemoresistance. Similar to ERK1/2, another critical member of MAPKs, JNK signaling is as well deregulated in many types of cancers [56,58]. However,

the contribution of JNK in cancer development is complex and far from being fully elucidated, in other words, exhibiting context-specific and cell type-specific manner. JNK has been well known to confer the positive impact on proliferation and survival of cancer cells via its target AP1, a transcriptional factor composing Jun and Fos [59]. Of interest, data in our study imply that Gli represents a putative downstream target of JNK, thus facilitating our better interpretation of the molecular mechanisms responsible for promoting the development of cancers by JNK. Although inhibitors of membrane protein Smo have been approved for treatment of basal cell carcinoma, the early acquired resistance to such inhibitors proposes the need for additional downstream targets [60]. Hence, our data imply JNK as a new target for the treatment of the tumors with acquired resistance to Smo inhibitors. In this regard, how JNK promotes the activation of Gli is quite interesting, and is currently being investigated in our lab.

Conclusions

In this study, we demonstrate that GPCR-like signaling mediated by Smo contributes to the acquired chemoresistance through activating the canonical Hh transcriptional factor Gli. Our data improve our knowledge of the nature of the signal transduction of Smo and the molecular mechanisms responsible for the acquired chemoresistance maintained by Hh pathway. Moreover, the findings that JNK after activated by Smo-G β γ signaling axis may stimulate the Gli activity and consequently promote acquired chemoresistance expose a promising and potential target for developing anti-cancer drugs aimed at Hh pathway and for combating the acquired resistance raised by using of anti-cancer drugs targeting Smo.

Competing interests

The authors declare that they have no competing interests.

Authors' contributions

XZ, JW, YL and YP conducted the experiments and were involved in data analysis. XZ helped with drafting the manuscript. WT designed the study, analyzed, and interpreted data, and drafted the manuscript. All authors read and approved the final manuscript.

Acknowledgements

This work was financially supported by National Natural Science Foundation of China (81173077), and the "Interdisciplinary Cooperation Team" Program for Science and Technology Innovation of the Chinese Academy of Sciences.

Received: 7 October 2013 Accepted: 3 January 2014

Published: 7 January 2014

References

1. Ingham PW, McMahon AP: Hedgehog signaling in animal development: paradigms and principles. *Genes Dev* 2001, **15**:3059–3087.
2. Varjosalo M, Taipale J: Hedgehog: functions and mechanisms. *Genes Dev* 2008, **22**:2454–2472.
3. Scales SJ, de Sauvage FJ: Mechanisms of hedgehog pathway activation in cancer and implications for therapy. *Trends Pharmacol Sci* 2009, **30**:303–312.
4. Guha M: Hedgehog inhibitor gets landmark skin cancer approval, but questions remain for wider potential. *Nat Rev Drug Discov* 2012, **11**:257–258.
5. Hammerschmidt M, McMahon AP: The effect of pertussis toxin on zebrafish development: a possible role for inhibitory G-proteins in hedgehog signaling. *Dev Biol* 1998, **194**:166–171.
6. DeCamp DL, Thompson TM, de Sauvage FJ, Lerner MR: Smoothed activators Galphai-mediated signaling in frog melanophores. *J Biol Chem* 2000, **275**:26322–26327.
7. Wang C, Wu H, Katritch V, Han GW, Huang XP, Liu W, Siu FY, Roth BL, Cherezov V, Stevens RC: Structure of the human smoothed receptor bound to an antitumour agent. *Nature* 2013, **497**:338–343.
8. Ogden SK, Fei DL, Schilling NS, Ahmed YF, Hwa J, Robbins DJ: G protein galphai functions immediately downstream of smoothed in hedgehog signalling. *Nature* 2008, **456**:967–970.
9. Riobo NA, Saucy B, Dilizio C, Manning DR: Activation of heterotrimeric G proteins by smoothed. *Proc Natl Acad Sci USA* 2006, **103**:12607–12612.
10. Low WC, Wang C, Pan Y, Huang XY, Chen JK, Wang B: The decoupling of smoothed from galphai proteins has little effect on Gli3 protein processing and hedgehog-regulated chick neural tube patterning. *Dev Biol* 2008, **321**:188–196.
11. Polizio AH, Chinchilla P, Chen X, Kim S, Manning DR, Riobo NA: Heterotrimeric Gi proteins link hedgehog signaling to activation of Rho small GTPases to promote fibroblast migration. *J Biol Chem* 2011, **286**:19589–19596.
12. Chinchilla P, Xiao L, Kazanietz MG, Riobo NA: Hedgehog proteins activate pro-angiogenic responses in endothelial cells through non-canonical signaling pathways. *Cell Cycle* 2010, **9**:570–579.
13. Belgacem YH, Borodinsky LN: Sonic hedgehog signaling is decoded by calcium spike activity in the developing spinal cord. *Proc Natl Acad Sci USA* 2011, **108**:4482–4487.
14. Qu C, Liu Y, Kunkalla K, Singh RR, Blonska M, Lin X, Agarwal NK, Vega F: Trimeric G protein-CARMA1 axis links smoothed, the hedgehog receptor transducer, to NF-kappaB activation in diffuse large B-cell lymphoma. *Blood* 2013, **121**:4718–4728.
15. Pierce KL, Premont RT, Lefkowitz RJ: Seven-transmembrane receptors. *Nat Rev Mol Cell Biol* 2002, **3**:639–650.
16. Domingo-Domenech J, Vidal SJ, Rodriguez-Bravo V, Castillo-Martin M, Quinn SA, Rodriguez-Barrueco R, Bonal DM, Charytonowicz E, Gladoun N, de la Iglesia-Vicente J, et al: Suppression of acquired docetaxel resistance in prostate cancer through depletion of notch- and hedgehog-dependent tumor-initiating cells. *Cancer Cell* 2012, **22**:373–388.
17. Sims-Mourtada J, Izzo JG, Ajani J, Chao KS: Sonic hedgehog promotes multiple drug resistance by regulation of drug transport. *Oncogene* 2007, **26**:5674–5679.
18. Zhang Y, Lattera J, Pomper MG: Hedgehog pathway inhibitor HhAntag691 is a potent inhibitor of ABCG2/BCRP and ABCB1/Pgp. *Neoplasia* 2009, **11**:96–101.
19. Queiroz KC, Ruela-de-Sousa RR, Fuhler GM, Aberson HL, Ferreira CV, Peppelenbosch MP, Spek CA: Hedgehog signaling maintains chemoresistance in myeloid leukemic cells. *Oncogene* 2010, **29**:6314–6322.
20. Singh RR, Kunkalla K, Qu C, Schlette E, Neelapu SS, Samaniego F, Vega F: ABCG2 is a direct transcriptional target of hedgehog signaling and involved in stroma-induced drug tolerance in diffuse large B-cell lymphoma. *Oncogene* 2011, **30**:4874–4886.
21. Park KS, Martelotto LG, Peifer M, Sos ML, Karnezis AN, Mahjoub MR, Bernard K, Conklin JF, Szczepny A, Yuan J, et al: A crucial requirement for hedgehog signaling in small cell lung cancer. *Nat Med* 2011, **17**:1504–1508.
22. Varnat F, Duquet A, Malerba M, Zbinden M, Mas C, Gervaz P, Ruiz i Altaba A: Human colon cancer epithelial cells harbour active HEDGEHOG-GLI signalling that is essential for tumour growth, recurrence, metastasis and stem cell survival and expansion. *EMBO Mol Med* 2009, **1**:338–351.
23. Bidet M, Tomico A, Martin P, Guizouarn H, Mollat P, Mus-Veteau I: The Hedgehog receptor patched functions in multidrug transport and chemotherapy resistance. *Mol Cancer Res* 2012, **10**:1496–1508.
24. Luan FJ: Establishment of the multidrug-resistant cell line K562/A02 and its drug-resistant properties. *Zhonghua Zhong Liu Za Zhi* 1993, **15**:101–103.
25. Zhang XH, Zhang FY, Ji XJ, Li ZY: [Vincristine-resistant human KB cell line and mechanism of multidrug resistance]. *Yao Xue Xue Bao* 1994, **29**:246–251.
26. Tan W, Martin D, Gutkind JS: The Galphai3-Rho signaling axis is required for SDF-1-induced migration through CXCR4. *J Biol Chem* 2006, **281**:39542–39549.

27. Mosmann T: **Rapid colorimetric assay for cellular growth and survival: application to proliferation and cytotoxicity assays.** *J Immunol Methods* 1983, **65**:55–63.
28. Stanton BZ, Peng LF, Maloof N, Nakai K, Wang X, Duffner JL, Taveras KM, Hyman JM, Lee SW, Koehler AN, et al: **A small molecule that binds hedgehog and blocks its signaling in human cells.** *Nat Chem Biol* 2009, **5**:154–156.
29. Chen JK, Taipale J, Cooper MK, Beachy PA: **Inhibition of hedgehog signaling by direct binding of cyclopamine to smoothened.** *Genes Dev* 2002, **16**:2743–2748.
30. Watkins DN, Berman DM, Burkholder SG, Wang B, Beachy PA, Baylin SB: **Hedgehog signalling within airway epithelial progenitors and in small-cell lung cancer.** *Nature* 2003, **422**:313–317.
31. Bokoch GM, Katada T, Northup JK, Hewlett EL, Gilman AG: **Identification of the predominant substrate for ADP-ribosylation by islet activating protein.** *J Biol Chem* 1983, **258**:2072–2075.
32. Federman AD, Conklin BR, Schrader KA, Reed RR, Bourne HR: **Hormonal stimulation of adenylyl cyclase through Gi-protein beta gamma subunits.** *Nature* 1992, **356**:159–161.
33. Chen JK, Taipale J, Young KE, Maiti T, Beachy PA: **Small molecule modulation of smoothened activity.** *Proc Natl Acad Sci USA* 2002, **99**:14071–14076.
34. Xie J, Murone M, Luoh SM, Ryan A, Gu Q, Zhang C, Bonifas JM, Lam CW, Hynes M, Goddard A, et al: **Activating Smoothened mutations in sporadic basal-cell carcinoma.** *Nature* 1998, **391**:90–92.
35. Gutkind JS: **Regulation of mitogen-activated protein kinase signaling networks by G protein-coupled receptors.** *Sci STKE* 2000, **2000**:re1.
36. Bonny C, Oberson A, Negri S, Sausser C, Schorderet DF: **Cell-permeable peptide inhibitors of JNK: novel blockers of beta-cell death.** *Diabetes* 2001, **50**:77–82.
37. Stebbins JL, De SK, Machleidt T, Becattini B, Vazquez J, Kuntzen C, Chen LH, Cellitti JF, Riel-Mehan M, Emdadi A, et al: **Identification of a new JNK inhibitor targeting the JNK-JIP interaction site.** *Proc Natl Acad Sci USA* 2008, **105**:16809–16813.
38. Derijard B, Hibi M, Wu IH, Barrett T, Su B, Deng T, Karin M, Davis RJ: **JNK1: a protein kinase stimulated by UV light and Ha-Ras that binds and phosphorylates the c-Jun activation domain.** *Cell* 1994, **76**:1025–1037.
39. Lei K, Nimmual A, Zong WX, Kennedy NJ, Flavell RA, Thompson CB, Bar-Sagi D, Davis RJ: **The Bax subfamily of Bcl2-related proteins is essential for apoptotic signal transduction by c-Jun NH(2)-terminal kinase.** *Mol Cell Biol* 2002, **22**:4929–4942.
40. Lauth M, Bergstrom A, Shimokawa T, Toftgard R: **Inhibition of GLI-mediated transcription and tumor cell growth by small-molecule antagonists.** *Proc Natl Acad Sci USA* 2007, **104**:8455–8460.
41. Jiang J, Hui CC: **Hedgehog signaling in development and cancer.** *Dev Cell* 2008, **15**:801–812.
42. Ayers KL, Therond PP: **Evaluating Smoothened as a G-protein-coupled receptor for Hedgehog signalling.** *Trends Cell Biol* 2010, **20**:287–298.
43. Brennan D, Chen X, Cheng L, Mahoney M, Riobo NA: **Noncanonical hedgehog signaling.** *Vitam Horm* 2012, **88**:55–72.
44. Amakye D, Jagani Z, Dorsch M: **Unraveling the therapeutic potential of the Hedgehog pathway in cancer.** *Nat Med* 2013, **19**:1410–1422.
45. Teglund S, Toftgard R: **Hedgehog beyond medulloblastoma and basal cell carcinoma.** *Biochim Biophys Acta* 1805, **2010**:181–208.
46. Tian H, Callahan CA, DuPree KJ, Darbonne WC, Ahn CP, Scales SJ, de Sauvage FJ: **Hedgehog signaling is restricted to the stromal compartment during pancreatic carcinogenesis.** *Proc Natl Acad Sci USA* 2009, **106**:4254–4259.
47. Romer JT, Kimura H, Magdaleno S, Sasai K, Fuller C, Baines H, Connelly M, Stewart CF, Gould S, Rubin LL, Curran T: **Suppression of the Shh pathway using a small molecule inhibitor eliminates medulloblastoma in Ptc1(+/-)p53(-/-) mice.** *Cancer Cell* 2004, **6**:229–240.
48. Sasai K, Romer JT, Lee Y, Finkelstein D, Fuller C, McKinnon PJ, Curran T: **Shh pathway activity is down-regulated in cultured medulloblastoma cells: implications for preclinical studies.** *Cancer Res* 2006, **66**:4215–4222.
49. Becher OJ, Hambardzumyan D, Fomchenko EI, Momota H, Mainwaring L, Bleau AM, Katz AM, Edgar M, Kenney AM, Cordon-Cardo C, et al: **Gli activity correlates with tumor grade in platelet-derived growth factor-induced gliomas.** *Cancer Res* 2008, **68**:2241–2249.
50. Tuson M, He M, Anderson KV: **Protein kinase A acts at the basal body of the primary cilium to prevent Gli2 activation and ventralization of the mouse neural tube.** *Development* 2011, **138**:4921–4930.
51. Wang B, Fallon JF, Beachy PA: **Hedgehog-regulated processing of Gli3 produces an anterior/posterior repressor gradient in the developing vertebrate limb.** *Cell* 2000, **100**:423–434.
52. Riobo NA, Lu K, Ai X, Haines GM, Emerson CP Jr: **Phosphoinositide 3-kinase and Akt are essential for sonic hedgehog signaling.** *Proc Natl Acad Sci USA* 2006, **103**:4505–4510.
53. Riobo NA, Haines GM, Emerson CP Jr: **Protein kinase C-delta and mitogen-activated protein/extracellular signal-regulated kinase-1 control GLI activation in hedgehog signaling.** *Cancer Res* 2006, **66**:839–845.
54. Atwood SX, Li M, Lee A, Tang JY, Oro AE: **GLI activation by atypical protein kinase C iota/lambda regulates the growth of basal cell carcinomas.** *Nature* 2013, **494**:484–488.
55. Wang Y, Ding Q, Yen CJ, Xia W, Izzo JG, Lang JY, Li CW, Hsu JL, Miller SA, Wang X, et al: **The crosstalk of mTOR/S6K1 and hedgehog pathways.** *Cancer Cell* 2012, **21**:374–387.
56. Wagner EF, Nebreda AR: **Signal integration by JNK and p38 MAPK pathways in cancer development.** *Nat Rev Cancer* 2009, **9**:537–549.
57. Vasilevska I, O'Dwyer PJ: **Role of Jun and Jun kinase in resistance of cancer cells to therapy.** *Drug Resist Updat* 2003, **6**:147–156.
58. Huang P, Han J, Hui L: **MAPK signaling in inflammation-associated cancer development.** *Protein Cell* 2010, **1**:218–226.
59. Shaulian E: **AP-1—the Jun proteins: oncogenes or tumor suppressors in disguise?** *Cell Signal* 2010, **22**:894–899.
60. Dijkgraaf GJ, Alick B, Weinmann L, Januario T, West K, Modrusan Z, Burdick D, Goldsmith R, Robarge K, Sutherland D, et al: **Small molecule inhibition of GDC-0449 refractory smoothened mutants and downstream mechanisms of drug resistance.** *Cancer Res* 2011, **71**:435–444.

doi:10.1186/1476-4598-13-4

Cite this article as: Zhan et al.: GPCR-like signaling mediated by smoothened contributes to acquired chemoresistance through activating Gli. *Molecular Cancer* 2014 **13**:4.

Submit your next manuscript to BioMed Central and take full advantage of:

- Convenient online submission
- Thorough peer review
- No space constraints or color figure charges
- Immediate publication on acceptance
- Inclusion in PubMed, CAS, Scopus and Google Scholar
- Research which is freely available for redistribution

Submit your manuscript at
www.biomedcentral.com/submit

