

# Choice of fluorophore affects dynamic DNA nanostructures

Kevin Jahnke<sup>1,2</sup>, Helmut Grubmüller<sup>3</sup>, Maxim Igaev<sup>3,\*</sup> and Kerstin Göpfrich<sup>1,2,\*</sup>

<sup>1</sup>Max Planck Institute for Medical Research, Biophysical Engineering Group, Jahnstraße 29, 69120 Heidelberg, Germany, <sup>2</sup>Department of Physics and Astronomy, Heidelberg University, 69120 Heidelberg, Germany and <sup>3</sup>Max Planck Institute for Biophysical Chemistry, Department of Theoretical and Computational Biophysics, Am Fassberg 11, 37077 Göttingen, Germany

Received December 15, 2020; Revised February 15, 2021; Editorial Decision March 09, 2021; Accepted March 10, 2021

## ABSTRACT

**The ability to dynamically remodel DNA origami structures or functional nanodevices is highly desired in the field of DNA nanotechnology. Concomitantly, the use of fluorophores to track and validate the dynamics of such DNA-based architectures is commonplace and often unavoidable. It is therefore crucial to be aware of the side effects of popular fluorophores, which are often exchanged without considering the potential impact on the system. Here, we show that the choice of fluorophore can strongly affect the reconfiguration of DNA nanostructures. To this end, we encapsulate a triple-stranded DNA (tsDNA) into water-in-oil compartments and functionalize their periphery with a single-stranded DNA handle (ssDNA). Thus, the tsDNA can bind and unbind from the periphery by reversible opening of the triplex and subsequent strand displacement. Using a combination of experiments, molecular dynamics (MD) simulations, and reaction-diffusion modelling, we demonstrate for 12 different fluorophore combinations that it is possible to alter or even inhibit the DNA nanostructure formation—without changing the DNA sequence. Besides its immediate importance for the design of pH-responsive switches and fluorophore labelling, our work presents a strategy to precisely tune the energy landscape of dynamic DNA nanodevices.**

## INTRODUCTION

DNA nanotechnology has been highly successful in repurposing the iconic DNA double helix to create programmable molecular architectures. Once focused on static shapes, dynamic and stimuli-responsive DNA nanoscale devices are gaining a large surge of interest for various applica-

tions (1)—from sensors (2–4), biocomputing algorithms (5), and drug delivery systems (6,7) to programmable robotic modules (8,9) and functional components for synthetic cells (10–12). In a vast majority of such reconfigurable systems, dynamics are achieved using strand displacement reactions (13,14), flexible single-stranded hinges (15), stimuli-responsive DNA modifications (16,17) or sequence motifs (4,18). The ability to reversibly actuate artificial structures at the nanoscale is therefore at the core of dynamic DNA nanotechnology. Direct measurements of conformational changes in aqueous solutions are often conducted with Förster resonance energy transfer (FRET) or fluorescence microscopy (19–21). These methods can provide a readout of the overall conformational state of the structure, for example, open versus closed, or bound versus unbound. Hence, the use of fluorescent dyes is commonplace to validate and quantify the functionality of the DNA-based devices. Fluorophore-tagged DNA nanostructures have also been used as nanoscopic rulers for fluorescence microscopy (22) and to enable the acquisition of super-resolution images with DNA-PAINT (23). Factors like solubility, photostability and excitation/emission spectra usually play the decisive role in choosing a suitable dye, while potential side effects on the DNA conformation such as overstabilization of DNA duplexes (24) or specific fluorophore-DNA interactions (25) are not the main concern.

Here, we show that the choice of the fluorophore itself can alter the equilibrium conformation and even inhibit a desired dynamic response. We use a pH-responsive triple-stranded DNA motif (tsDNA) combined with a strand-displacement reaction to exemplify that the dynamics can be strongly influenced by the choice of the fluorophore. With all-atom molecular dynamics (MD) simulations, we show that fluorophore-dependent conformational dynamics of the single-stranded DNA (ssDNA) contribute to this observation. By releasing caged protons inside droplet-based confinement, we find that also the duplex dissociation is affected by the fluorophore. Using a reaction-diffusion

\*To whom correspondence should be addressed. Tel: +49 6221 486 443; Email: kerstin.goepfrich@mr.mpg.de  
Correspondence may also be addressed to Maxim Igaev. Tel: +49 5512 012 334; Email: migaev@mpibpc.mpg.de

model, we derive the apparent dissociation constant for 12 different experimentally tested fluorophore combinations. A profound knowledge about the effect that fluorophores and other chemical modifications have on the dynamics of a DNA-based system can be leveraged to realize the desired functionality.

## MATERIALS AND METHODS

### DNA sequence design

The DNA sequences were adapted from Green *et al.* (4). To enable self-assembly at the droplet-periphery, the ssDNA (termed ‘Regulator’ in Green *et al.*) was modified with a cholesterol-tag (sequence: 5′ Cy3/Alexa488/Cy5/-ACCAGACAATACCACACAATTTT-CholTEG 3′, HPLC purified). The tsDNA (termed ‘Sensor’ in Green *et al.*) contained the triple-stranded DNA motif as well as a stem loop complementary to the ssDNA. A fluorophore modification was added to its 5′ end (sequence: 5′ Cy5/Cy3/Atto488/Atto647-TTCTCTTCTCGTTTGC TCTTCTTGTGTGGTATTGTCTAAGAGAAGAG 3′, HPLC purified). Both DNA sequences were purchased from Biomers or Integrated DNA Technologies and dissolved in ultrapure water (Milli-Q) to exclude the impact of DNA storage buffer on the pH.

### Formation of DNA-containing water-in-oil droplets

For the formation of water-in-oil droplets, the DNA-containing aqueous phase was layered on top of the oil phase in a volumetric ratio of 1:3 within a microtube (Eppendorf). Droplet formation was induced by manual shaking for about 4 s as described earlier (26). For the oil-phase, 1.4 vol% of perfluoro-polyether-polyethylene glycol (PFPE-PEG) block-copolymer fluorosurfactants (008-PEG-based fluorosurfactant, Ran Biotechnologies, Inc.) dissolved in HFE-7500 oil (DuPont) was used. The interfacially active surfactants stabilize the droplets. The aqueous phase was composed of 10 mM MgCl<sub>2</sub> and 250 mM potassium phosphate buffer adjusted to pH values from 4.3 to 8.0. Cholesterol-tagged ssDNA and the tsDNA were added to the aqueous phase at concentrations of 1.66 and 1.25 μM, respectively, if not stated otherwise. ssDNA was added in excess to ensure that there are sufficient binding sites for the tsDNA. Other contents were encapsulated by adding them to the aqueous phase as described in text.

### Confocal fluorescence microscopy

For confocal microscopy, the DNA-containing droplets were sealed in a custom-built observation chamber and imaged 10 min after encapsulation using a confocal laser scanning microscope LSM 880 or LSM 800 (Carl Zeiss AG). The pinhole aperture was set to one Airy Unit and experiments were performed at room temperature. The images were acquired using a 20× objective (Plan-Apochromat 20×/0.8 M27, Carl Zeiss AG). Images were analysed and processed with ImageJ (NIH, brightness and contrast adjusted).

### Light-triggered proton release

To dynamically decrease the pH inside individual compartments, we co-encapsulated 40 mM NPE-caged sulfate (Santa Cruz Biotechnology), which undergoes photolysis upon illumination with light of the wavelength 405 nm and releases a proton. For the investigation of the detachment kinetics, 2 μM ssDNA and 1.5 μM tsDNA were mixed with 20 mM potassium phosphate buffer at pH 8 and 5 mM MgCl<sub>2</sub>. The use of the buffer ensures the same starting conditions and delays the acidification, which facilitates the imaging and analysis of the tsDNA fluorescence. After encapsulation, a subset of droplets was illuminated with 20% of the power of a 5 mW 405 nm laser diode while simultaneously recording the detachment of the Cy5-labelled tsDNA. The field of view, the laser intensity and all additional imaging conditions were kept the same.

### Image analysis

The tsDNA fluorescence inside the droplet and at the droplet periphery was analysed with a custom-written ImageJ macro (27). Droplets were identified and assigned a circular region of interest from which the droplet radius  $r_0$  was calculated. We first selected droplets of similar size in the range of 40–50 μm. Afterwards, we manually removed droplets which were in contact with each other and only analysed droplets without direct neighbours to avoid crosstalk of their fluorescent signals. Analysis of almost identical droplets reduces the variance in the measured quantities and allows for statistical robustness. Second, it unifies the acquired data such that mathematical modelling is possible. The intensity within the droplet center,  $I_{in}$ , was defined as the mean intensity within a circle of radius  $r_{in} = 0.5r_0$ . The intensity at the droplet periphery  $I_{peri}$  was quantified by measuring the maximum intensity along a line orthogonal to the droplet circumference. This analysis was repeated 20 times every 18° along the droplet circumference, and the mean value taken as  $I_{peri}$ . Following the determination of the droplet intensities  $I_{in}$ , they were plotted with Prism 8 (GraphPad) and fitted using a sigmoidal function of the form:  $I_{in} = I_{min} + (I_{min} - I_{max}) / (1 + 10^{-\alpha(pH_{turn} - pH)})$ , with  $\alpha$  being the decay constant and  $pH_{turn}$  the  $pK_a$  and the turning point of the fit.

### Atomistic simulations of unlabelled ssDNA

To provide a realistic description of ssDNA dynamics both in the presence and in the absence of fluorescent dyes, we first performed a series of simulations for the dye-free ssDNA using the Parmbsc1 flavour (28) of the standard Amber 99SB force field (29) with CUFIX non-bonded corrections (30) and ion parameter corrections by Joung and Cheatham (31). We also used TIP3P as the water model in our simulations (32). The simulations were initiated from single-stranded helical structures built with Chimera (v. 1.14) (33). The starting structures were solvated in TIP3P water in a dodecahedron box with an edge length of 9.0 nm, yielding a system with ~50 000 atoms. Ion concentrations were set to 250 mM NaCl and 10 mM MgCl<sub>2</sub> to mimic the experimental conditions.

Subsequent MD simulations were performed with GRO-MACS 2019.6 (34). Lennard-Jones and short-range electrostatic interactions were calculated with a 1.0-nm cutoff, while long-range electrostatics was treated using particle-mesh Ewald summation (35) with a 0.12-nm grid spacing. Hydrogen bond lengths were constrained using the LINCS algorithm (36). Velocity rescaling (37) with a heat bath coupling constant of 1.0 ps was used to control the temperature for solute and solvent separately. Center-of-mass correction was applied to solute and solvent separately every 100 steps. Energy minimization was followed by a short equilibration for 1 ns in the NVT ensemble ( $T = 100$  K) and with position restraints applied to the solute's heavy atoms and a 1-fs integration time step. Next, the temperature was increased to  $T = 300$  K, and the system was equilibrated for 5 ns (2-fs time step), while keeping the pressure at 1 atm using the Berendsen barostat (38) with a 1-ps coupling constant. The position restraints were then slowly released during 20 ns of equilibration in the NPT ensemble ( $T = 300$  K,  $p = 1$  atm, 2-fs time step) using the Parrinello-Rahman barostat (39). This initial equilibration step was followed by a total of 17 independent production runs, each being 5  $\mu$ s long. The first  $\sim 1$   $\mu$ s of the trajectories were discarded to exclude the initial relaxation towards the equilibrium state. Unless specified differently, all trajectory analyses were performed with Python (v. 2.7 available at <https://www.python.org/>), VMD (v. 1.9.2) (40) and Chimera (v. 1.14) (33).

### ssDNA simulations with fluorescent dyes covalently attached

Parameters and energy-minimized structures for common Alexa and Cy fluorescent dye families were derived from the AMBER-DYES library (41) that is compatible with most Amber force fields. Alexa488, Cy3 (water-soluble) and Cy5 (water-soluble) dyes were attached to the 5' end of the ssDNA via a neutral lysine linker. To this end, the capping H5T atom of the 5' nucleotide was removed, and the C atom of the linker backbone was bonded with the O5' atom of the 5' nucleotide. Since in the Amber formalism, the 5' and 3' nucleotides possess non-integer charges ( $-0.3e$  and  $-0.7e$ , respectively; unlike the regular nucleotides that have a charge of  $-1.0e$ ), the resulting dye-ssDNA construct had a slightly non-integer charge. To account for this, the residual small charge was redistributed over the O5', C5', C4', C3', O4', C1' and C2' atoms of the 5' nucleotide (sugar backbone).

To accommodate the larger dye-ssDNA, the size of the simulation box was increased to 12 nm, yielding a system with about 120 000 atoms. All subsequent simulations were done under the same conditions as for the unlabelled ssDNA. For the dye-free simulations, multiple 6  $\mu$ s production runs were performed and the first  $\sim 1$   $\mu$ s were discarded as equilibration time. A summary of the simulated systems is given in Table 1.

### Determination of the apparent dissociation constant

The equilibrium distribution of ssDNA and tsDNA molecules in a droplet can be described mathematically using a reaction-diffusion system of equations in which the binding sites (ssDNA attached to the droplet periphery),

**Table 1.** Summary of dye-free and dye-labelled ssDNA simulations

Force field	System	Duration
Parmbsc1 + TIP3P	No dye	$17 \times 5 \mu$ s
Parmbsc1 + TIP3P	Cy3	$6 \times 6 \mu$ s
Parmbsc1 + TIP3P	Cy5	$6 \times 6 \mu$ s
Parmbsc1 + TIP3P	Alexa 488	$6 \times 6 \mu$ s

and hence also the binding and dissociation reactions, are localized in a narrow volumetric layer near the spherical droplet surface (42,43). Briefly, if  $S_{\text{tot}}$  and  $T_{\text{tot}}$  are the total concentrations of ssDNA and tsDNA in the droplet, respectively,  $T_{\text{eq}}$  is the steady-state concentration of tsDNA in equilibrium, and  $K_D$  is the dissociation constant defining the ssDNA/tsDNA binding equilibrium, the ratio between the peripheral and inner intensity of tsDNA fluorescence can be expressed as:

$$\frac{I_{\text{peri}}}{I_{\text{in}}} = 1 + \frac{S_{\text{tot}}}{T_{\text{eq}} + K_D}. \quad (1)$$

Here, both  $I_{\text{in}}$  and  $I_{\text{peri}}$  are per-area intensities averaged over  $\pi r_{\text{in}}^2$  and  $2\pi r_0 \epsilon$ , respectively, where  $\epsilon$  is the apparent thickness of the reaction layer (determined from confocal images as described in the Supplementary Text S1). The steady-state concentration  $T_{\text{eq}}$ ,

$$T_{\text{eq}} = \frac{1}{2} \left[ - (3\epsilon/r_0 S_{\text{tot}} + K_D - T_{\text{tot}}) + \sqrt{(3\epsilon/r_0 S_{\text{tot}} + K_D - T_{\text{tot}})^2 + 4T_{\text{tot}}K_D} \right], \quad (2)$$

is obtained by simultaneously requiring that the ssDNA/tsDNA binding has attained equilibrium and that the number of tsDNA molecules in the droplet is conserved. The apparent  $K_D$  values presented in Figure 4 were determined using Equations (1) and (2), and the corresponding errors were calculated using basic error propagation rules and measured uncertainties of  $I_{\text{peri}}$ ,  $I_{\text{in}}$ ,  $r_0$  and  $\epsilon$ . A detailed mathematical description of the model, estimation of  $\epsilon$ , and error analysis are given in the Supplementary Texts S1 and S2.

### Radius of gyration distributions and estimations of confidence intervals

The gyration radii ( $R_g$ ) of ssDNA were calculated using the `gmx gyrate` tool included in the GROMACS package. The probability distributions  $p(R_g)$  shown in Figure 2 were then computed by binning the corresponding data sets and normalizing the histograms. Confidence intervals for  $p(R_g)$  were estimated using bootstrap analysis (44). To this end, we used the obtained distributions to bootstrap  $10^6$  new random  $R_g$  samples (each consisting of  $10^5$  data points) such that the newly generated data is distributed according to  $p(R_g)$  and properly correlated with the autocorrelation time estimated from the original  $R_g$  trajectories.

## RESULTS

### Fluorophore modification influences pH response

We set out to test the impact of fluorophores on the dynamics of DNA nanostructures. For this purpose, we employed

a popular triple-stranded DNA motif (tsDNA) (4) as an example. Its reversible pH-responsive actuation works as follows: At basic pH, the Hoogsteen-interactions which stabilize the triple-stranded configuration are weaker than at acidic pH. Therefore, an increase in pH leads to unwrapping of the third strand which previously stabilized the duplex. This, in turn, lowers the energy barrier for a strand displacement reaction with a single-stranded DNA (ssDNA), which was designed to be complementary to the hairpin loop of the tsDNA. Thus, a stable DNA duplex can form between the tsDNA and the ssDNA (Figure 1A) (4). To monitor this process, we modified the ssDNA with a cholesterol-tag and encapsulated it together with the tsDNA into water-in-oil droplets. Upon encapsulation, the ssDNA self-assembled at the droplet periphery due to hydrophobic interactions between the cholesterol-tag and the droplet-stabilizing surfactants (11). Thereby, we obtained an attachment handle, which reversibly recruits the tsDNA to the periphery at basic pH (Figure 1B). In contrast to Förster Resonance Energy Transfer (FRET), which is commonly employed to monitor the pH dynamics (21), our system provides freedom regarding the choice of fluorophores—which is absolutely necessary for us to study the impact of different fluorophore combinations. We directly visualized tsDNA binding and investigated the impact of fluorophore modifications on the pH dynamics. At the same time, this system provides a strategic blueprint for the pH-sensitive recruitment of components to the membrane—an interesting function in itself, in particular concerning the bottom-up construction of synthetic cells (45).

Confocal imaging revealed that attachment of the tsDNA to the compartment periphery is shifted to higher pH values if the ssDNA carries a Cy3 compared to the unlabelled ssDNA (Figure 1C, D). The images show the equilibrated state (Supplementary Figure S1) and we confirmed that the shift is neither due to interactions of the Cy3 with the surfactant layer (Supplementary Figure S2) nor an artefact of the droplet size (Supplementary Figure S3). We quantified this effect by extracting the normalized intensity inside the droplets ( $I_{in}$ , periphery excluded) from the confocal images (Figure 1E). Importantly, we could reproduce the sigmoidal pH response curve that was reported for FRET-based detection (46). The turning-point of the pH-sensitive ssDNA-tsDNA binding curve for unlabelled ssDNA was around  $5.80 \pm 0.09$ , whereas it shifted significantly to  $6.05 \pm 0.04$  for the Cy3-modified ssDNA ( $2.53\sigma$ ). Even at pH 8 not all tsDNA was bound to the droplet periphery for the Cy3-modified ssDNA. Importantly, we confirmed our results with polyacrylamide gel electrophoresis (PAGE) as an independent bulk measurement. Also with PAGE we find that the binding between ssDNA and tsDNA is enhanced if the ssDNA does not carry a fluorophore (Supplementary Figure S4). This confirms that our observations are not just an artifact of the measurement system itself, for example, due to unspecific interactions at the water-oil interface. Note that the  $pK_a$  of the DNA itself is far below the pH-range considered here and Cy3 is uncharged throughout the pH-range relevant for ssDNA-tsDNA binding with a  $pK_a$  of 7.8 (Supplementary Table S1).

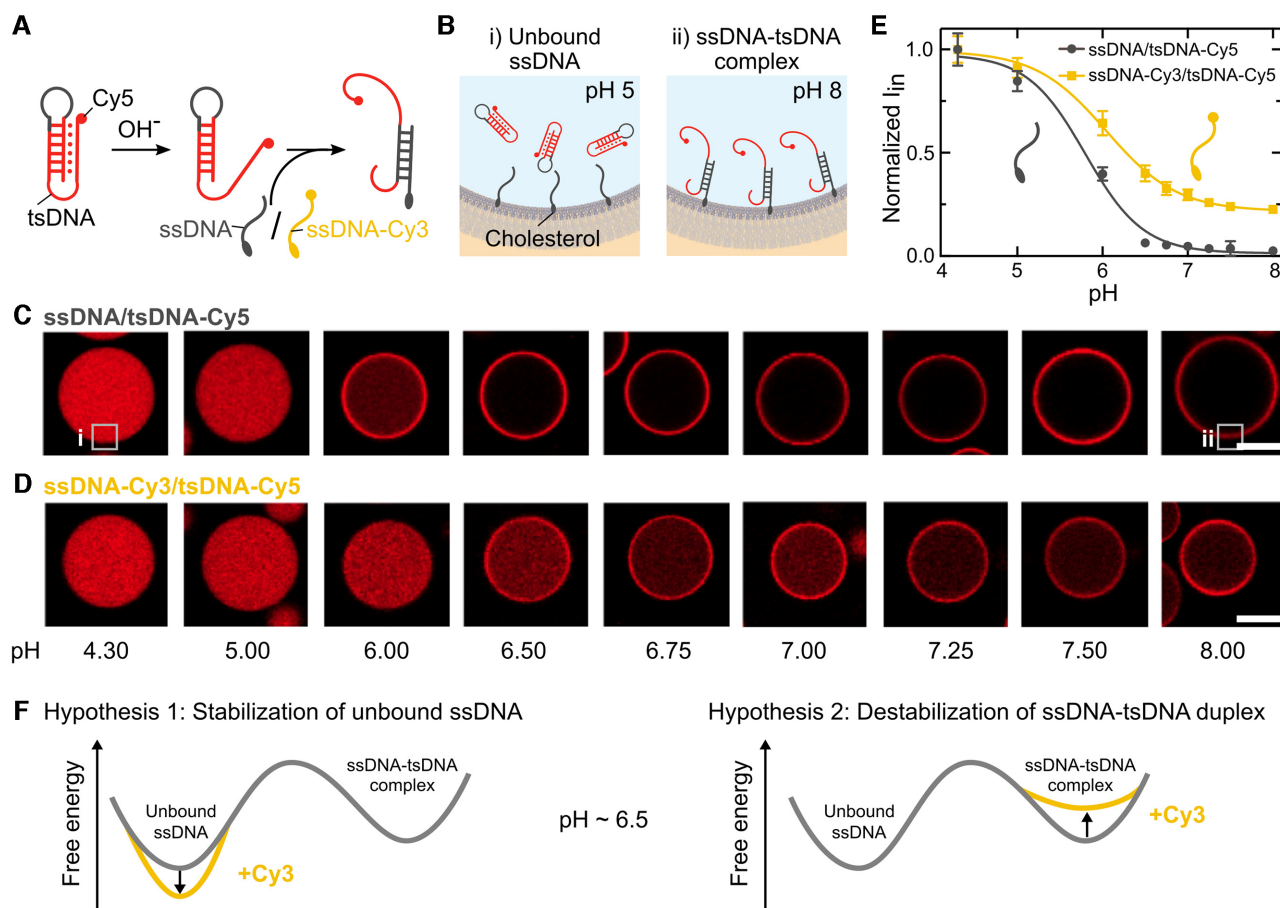
While it is well known that the pH turning point can be shifted by changing the DNA sequence (46), it was not

known that the same can be achieved by changing the fluorophore modification alone. This striking observation can be explained by either of the two following hypotheses as illustrated in Figure 1F: (i) a fluorophore modification on the ssDNA causes overstabilization of the free ssDNA state by making its equilibrium ensemble more compact and, therefore, less accessible for base pairing. (ii) The fluorophore modification destabilizes the ssDNA-tsDNA complex, thereby raising the bound state in free energy (relative to the unbound one). First, we tested Hypothesis 1 with all-atom molecular dynamics (MD) simulations. Subsequently we examined Hypothesis 2 with experiments.

### MD simulations reveal reduction of ssDNA accessibility by fluorophore modification

To test Hypothesis 1, we used all-atom MD simulations to probe the secondary structure of the Cy3-labelled ssDNA (Figure 2A) and compared it to the unlabelled ssDNA. First of all, the unlabelled ssDNA yielded a very broad probability density distributions for the radius of gyration (Figure 2B), which is a direct measure of the DNA's compactness. The distributions for the unlabelled ssDNA show a significant fraction of extended structures, in which the DNA bases are accessible for complementary base pairing (see also representative snapshots in Figure 2C and Video S1). On the contrary, the Cy3-labelled ssDNA (Figure 2A) yielded a distinctively different probability density distribution for the radius of gyration (Figure 2D), which reflects a much lower propensity for extended conformations. The bases of the Cy3-labelled ssDNA were found to be wrapped around the fluorophore, most likely due to pi-pi stacking interactions between the ssDNA bases and the aromatic groups of Cy3 (Video S2). This entangled conformation renders the ssDNA less accessible for complementary base pairing. An overstabilization of the unbound ssDNA means a lower free energy of the ssDNA compared to the ssDNA-tsDNA complex. This would explain our experimental observations in line with Hypothesis 1. Note that Cy5-labelled ssDNA favored similarly compact conformations wrapped around the dye, which further indicates that the aromatic groups of Cy dyes tend to interact with ssDNA base pairs (Supplementary Figure S5, Video S3).

To test if weaker dye-ssDNA interactions would restore expanded conformations of the ssDNA in our simulations, we used an Alexa488 dye. We selected an Alexa dye (Figure 2F), because its chemical structure is considerably different compared to Cy3, which may render it less prone to base stacking interactions. Moreover, in contrast to the hydrophobic and highly planar Cy dyes, Alexa dyes are more hydrophilic due to their negative charge (Supplementary Table S1) (47) and smaller in size. We thus believe that a combination of electrostatic, steric and hydrophobicity-related effects could render Alexa dyes less prone to unspecific interactions with ssDNA, hence reducing the influence on the conformational ensemble of the ssDNA. We found that the mean radius of gyration for an Alexa488-modified ssDNA laid between that of the unmodified and the Cy3-modified ssDNA (Figure 2G). The MD snapshots show that the fully extended conformation, where the bases are accessible, was partially recovered (Figure 2H, Video S4),



**Figure 1.** Fluorophore modification influences pH response. (A) Sketch of the pH responsive DNA motif. A Cy5-labelled triple-stranded DNA (tsDNA) opens up at basic pH, lowering the energy barrier for strand displacement and hence for complementary base pairing with a cholesterol-tagged single-stranded DNA (ssDNA). (B) This process can be monitored in water-in-oil droplets. The cholesterol-tagged ssDNA self-assembles at the droplet periphery, whereas cholesterol-free tsDNA remains homogeneously distributed within the droplet at acidic pH and attaches to the droplet periphery at higher pH values. (C, D) Representative confocal images of water-in-oil droplets containing Cy5-labelled tsDNA (red,  $\lambda_{ex} = 647$  nm) and unlabelled ssDNA (C) or Cy3-labelled ssDNA (D) at different pH values. Attachment of the tsDNA is shifted to higher pH values if the ssDNA is labelled with Cy3. Scale bars: 20  $\mu\text{m}$ . (E) Normalized steady-state fluorescence intensity of the Cy5-labelled tsDNA inside the droplet (periphery excluded) at different pH values for unlabelled (gray) and Cy3-labelled ssDNA (yellow). Error bars correspond to the standard deviation of the intensities of  $n = 20$  droplets per condition. Solid lines represent sigmoidal fits revealing a turning point at  $\text{pH } 5.80 \pm 0.09$  and  $6.05 \pm 0.04$ , respectively. (F) Free energy profile illustrating potential hypotheses for the altered behaviour of the Cy3-tagged ssDNA compared to the unlabelled ssDNA.

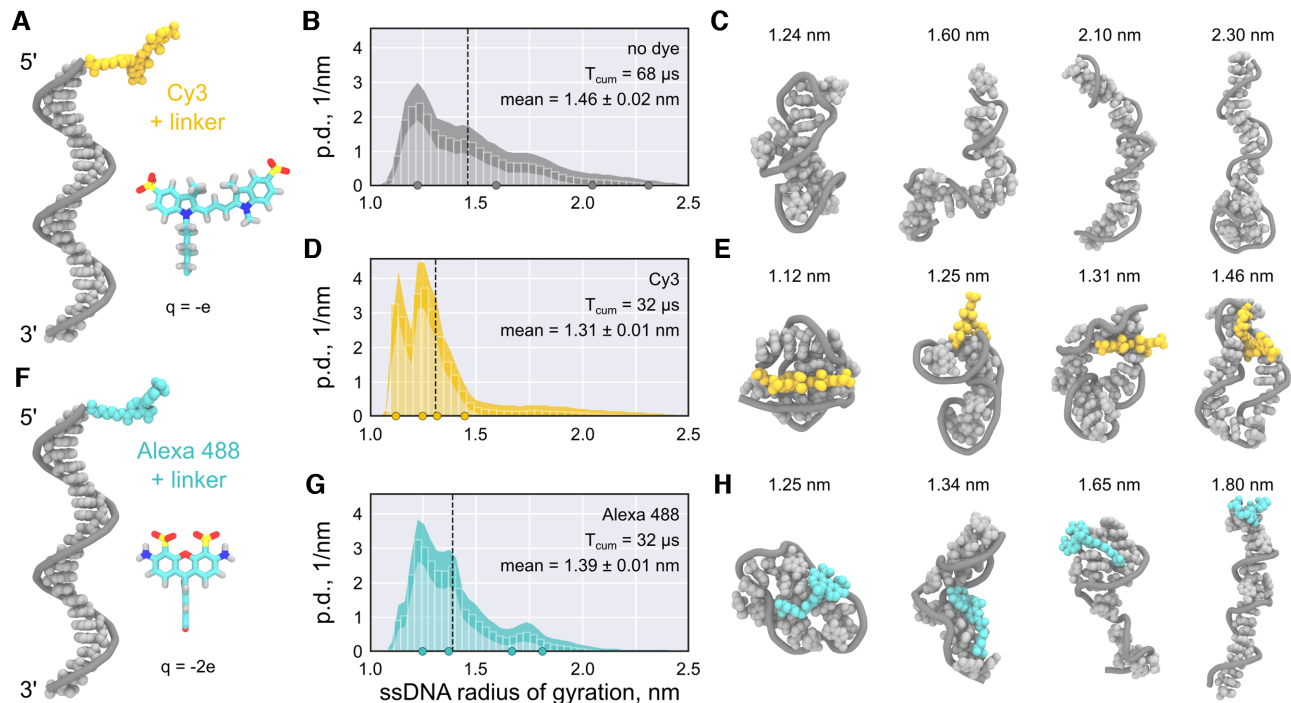
improving the accessibility of the strand for complementary base pairing.

Taken together, our simulations suggest that a single fluorophore modification on ssDNA can significantly change the DNA's conformation. The more compact conformation of dye-labelled ssDNA effectively increases the free energy cost for expansion required for duplex formation with tsDNA. Thus, our simulations support Hypothesis 1. Importantly, the ssDNA sequence is random such that the observations can likely be generalized for a broad spectrum of DNA sequences.

#### Dissociation kinetics show fluorophore dependence

As a next step, we investigated the duplex dissociation process to see if the fluorophore modification affects the dissociation constant after duplex formation (Hypothesis 2). Since all-atom MD simulations cannot describe this re-

action due to the limited timescales, we studied the detachment of the tsDNA from the compartment periphery experimentally. We implemented an approach where we achieved light-triggered release of protons in individual compartments—providing full spatio-temporal control over the acidification process. For this purpose, we used NPE-caged-sulfate, which breaks up into a sulfate and a proton upon photolysis (48). To prove that NPE-caged sulfate can be used to decrease the pH inside the droplets, we first encapsulated it together with the pH-sensitive dye pyranine at pH 8 and locally illuminated individual droplets with a 405 nm laser (Figure 3A). The pyranine emission upon 488 nm excitation decreased, confirming the successful pH decrease inside the droplets from initially pH 8 to under pH 5. The buffer kept the pH constant until its capacity is exceeded after  $\sim 20$  s. Then, the pH decreased until most of the NPE-caged sulfate underwent photolysis and hence the pH approached a constant value after  $\sim 50$  s. We used this



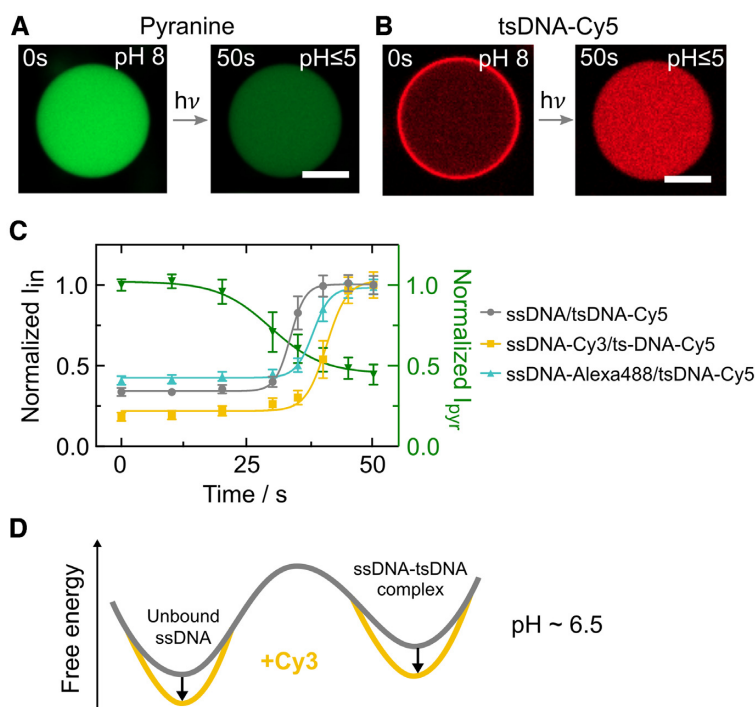
**Figure 2.** MD simulations suggest that fluorophore labelling can stabilize more compact ssDNA conformations. (A, F) Starting conformation of Cy3- (A, yellow) and Alexa488-labelled (F, turquoise) ssDNA (gray). The chemical structure of the fluorophore and its net charge are shown as an inset. (B, D, G) Probability density (p.d.) distributions of the gyration radius of ssDNA without dye (B), labelled with Cy3 (D), and labelled with Alexa488 (G). The shaded areas indicate the 95% confidence intervals estimated using bootstrapping (see Materials and Methods). The black dashed lines indicate the means of the distributions,  $T_{cum}$  the cumulative simulation time. (C, E, H) Representative structure snapshots of the unlabelled ssDNA (C), the Cy3-ssDNA (E) and the Alexa488-ssDNA (H). Positions of the selected snapshots within the corresponding distributions are marked with dots in the probability density distributions.

dynamic light-mediated acidification mechanism to detach the tsDNA from the droplet periphery and to probe dissociation kinetics rather than the steady-state. At  $t = 0$  s, the tsDNA was bound to the ssDNA at the droplet periphery (Figure 3B) and completely detached within 50 s of illumination. Upon detachment, the triplex conformation of the tsDNA was restored. In order to assess the detachment kinetics, we monitored the normalized tsDNA–Cy5 intensity for unmodified, Cy3-modified and Alexa488-modified ssDNA inside the droplet over time (Figure 3C). Following proton-release, the tsDNA detached from the ssDNA for all tested fluorophore modifications (Video S5). The decay times  $t_d = 1/\alpha$  of the sigmoidal fits were comparable for all three fluorophore modifications, indicating similar detachment kinetics. However, detachment (i.e. duplex dissociation) occurred at different time points, hence at different pH values – again pointing towards an altered binding equilibrium. Detachment from the unlabelled ssDNA happened earlier (i.e. at higher pH) indicating that a fluorophore label is stabilizing the ssDNA–tsDNA complex. Taken together, the results obtained so far suggest that fluorophore modifications, in particular Cy-dyes, stabilize not only the unbound ssDNA (Hypothesis 1) but also the ssDNA–tsDNA duplex as illustrated in the free energy profile in Figure 3D. However, the stabilization of compact ssDNA conformations is likely stronger, which explains the observed shift of the pH switching point. This is effectively increasing the energy barrier for the dynamic switching of fluorophore-labelled DNA.

### Reaction-diffusion modelling reveals impact of fluorophores on apparent dissociation constant

Finally, having shown that a fluorophore modification on the ssDNA has a significant influence on the pH switching point, we now additionally tested the impact of fluorophore modifications on tsDNA. For this purpose, we investigated twelve different fluorophore combinations on ssDNA and tsDNA. To quantitatively compare the impact of different fluorophores, we developed an analytical model to derive the apparent dissociation equilibrium constant  $K_D = k_{off}/k_{on}$  at a fixed pH for each individual fluorophore combination. For this purpose, we derived a reaction-diffusion model for spherical compartments (Text S2). It allowed us to determine the apparent dissociation constant  $K_D$  by extracting the droplet radius, the peripheral and the inner intensity of the tsDNA from confocal images with known total concentrations of DNA. We tested combinations of five different fluorophores, namely Cy3, Cy5, Alexa488, Atto488 and Atto647 as well as unlabelled ssDNA on the apparent  $K_D$  (Figure 4). Note that the use of an unlabelled tsDNA was not possible because it would inhibit the monitoring with confocal microscopy.

Remarkably,  $K_D$  varied dramatically for the different combinations. Most striking was the fact that binding is almost fully inhibited for certain fluorophore combinations, like ssDNA/tsDNA–Atto647, ssDNA–Cy5/tsDNA–Atto488 and ssDNA–Alexa488/tsDNA–Atto647 with  $K_D \gg 1$ . On the other hand combinations like ssDNA–Cy3/ts–



**Figure 3.** Light-mediated acidification of water-in-oil droplets reveals fluorophore-dependent duplex dissociation kinetics. (A) Confocal images of the pH-sensitive dye pyranine ( $50 \mu\text{M}$ ,  $\lambda_{\text{ex}} = 488 \text{ nm}$ , not coupled to DNA) encapsulated into water-in-oil droplets at pH 8. Light-triggered uncaging of NPE-caged sulfate ( $\lambda_{\text{ex}} = 405 \text{ nm}$ ) leads to proton release causing a rapid pH drop from 8 to under 5 within 50 s. The pH drop can be monitored as a decrease in pyranine fluorescence. (B) Representative confocal images of Cy5-labelled tsDNA ( $\lambda_{\text{ex}} = 647 \text{ nm}$ ) encapsulated together with cholesterol-tagged ssDNA into water-in-oil droplets at pH 8. During acidification, the tsDNA detaches from the droplet periphery as the triple state is energetically favoured. Scale bars:  $20 \mu\text{m}$ . (C) Normalized fluorescence intensity of the tsDNA inside the droplet (periphery excluded) over time for unlabelled, Cy3-labelled and Alexa488-labelled ssDNA as well as pyranine (right axis). Error bars correspond to the standard deviation of the intensities of  $n = 26$  droplets for the ssDNA/tsDNA-Cy5 condition,  $n = 23$  droplets for the ssDNA-Cy3/tsDNA-Cy5 condition,  $n = 24$  droplets for the ssDNA-Alexa488/tsDNA-Cy5 condition and  $n = 5$  droplets containing pyranine. Solid lines represent sigmoidal fits with turning points at  $33.5 \pm 0.1 \text{ s}$  (unmodified ssDNA),  $40.7 \pm 0.5 \text{ s}$  (ssDNA-Cy3) and  $38.0 \text{ s} \pm 0.3 \text{ s}$  (ssDNA-Alexa488). Note that the decay times  $t_d = 1/\alpha$  are similar for all fluorophores  $3.45 \pm 0.24 \text{ s}$  (unmodified ssDNA),  $4.76 \text{ s} \pm 1.13 \text{ s}$  (ssDNA-Cy3) and  $4.00 \text{ s} \pm 0.48 \text{ s}$  (ssDNA-Alexa488). (D) Free energy profile illustrating our conclusion that both equilibrium states are stabilized by the presence of a dye on the ssDNA.

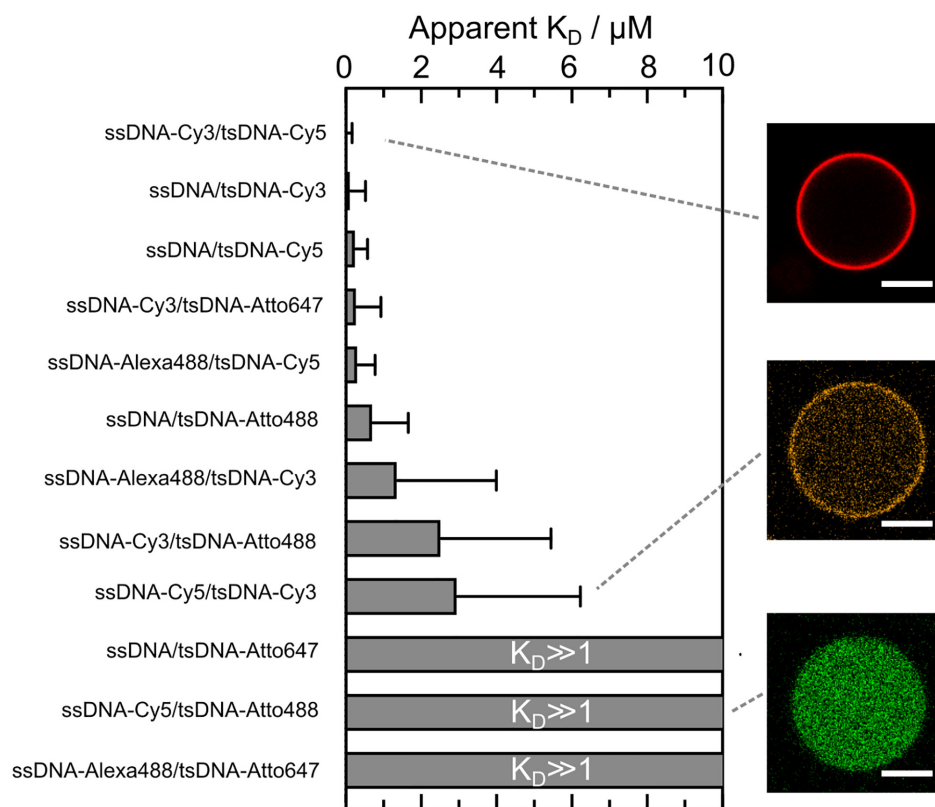
DNACy5, ssDNA/tsDNA-Cy3 and ssDNA/tsDNA-Cy5 bound very efficiently as expected at pH 8. As a general trend, we deduce that Cy-dyes on the tsDNA seemed to lead to a lower apparent  $K_D$  compared to Atto-dyes. Furthermore, it is surprising that the permutation of two Cy-dyes on ssDNA and tsDNA lead to a different apparent  $K_D$ . While ssDNA-Cy3/tsDNA-Cy5 attached very efficiently, we obtained intermediate  $K_D$ 's for ssDNA-Cy5/tsDNA-Cy3. This could be due to the fact that the larger Cy5 dye can interact with multiple bases and therefore stabilize the unbound ssDNA conformation more efficiently. Confirming our observations, the permutation of the tsDNA fluorophore influenced the pH hysteresis (Supplementary Figure S6) and the dynamic detachment in experiments using NPE-caged sulfate (Supplementary Figure S7). Moreover, if we move the fluorophore modification of the tsDNA from the 5' end to the 3' end, binding to the unlabelled ssDNA was enhanced (Supplementary Figure S8). This is likely due to the fact that the dye is placed further away from the stem loop, making the stem loop better accessible for complementary base-pairing with the ssDNA. In addition, a fluorophore modification on the 3' end of the tsDNA may destabilize the triple-stranded state, hence increasing the binding affinity for ssDNA. Indeed, due to the much smaller loop

on that side, steric effects may come into play, which would equally contribute to the lower intensity inside the droplet for tsDNA-Cy5-3'.

Taking all these observations into account, we propose that not only a fluorophore modification on the ssDNA but also on the tsDNA affects the dynamics of pH-responsive DNA nanostructures up to a point that binding is inhibited. The choice of fluorescent dyes can thus be exploited to shape the energy landscape for dynamic DNA nanostructures and to shift the equilibrium towards the bound or the unbound state.

## DISCUSSION

One of the most exciting tasks in the field of DNA nanotechnology is the construction of dynamic molecular devices that can perform mechanical motion upon stimulation. The foundation for this work is an experimental readout, which is suitable to track dynamic reconfiguration in space and time. Fluorescence microscopy techniques, such as superresolution imaging or FRET, are ideally suited for *in situ* measurements on active DNA origami structures. The fluorophore is normally selected to match the optical setup rather than the DNA nanostructure itself and



**Figure 4.** Histogram depicting the apparent dissociation constants  $K_D$  for 12 different ssDNA/tsDNA combinations at pH 8 with variable fluorophore modifications including Alexa488 ( $\lambda_{ex} = 488$  nm), Atto488 ( $\lambda_{ex} = 488$  nm), Cy3 ( $\lambda_{ex} = 561$  nm), Cy5 ( $\lambda_{ex} = 647$  nm) and Atto647 ( $\lambda_{ex} = 647$  nm). Confocal images of three fluorophore combinations depicting strong (ssDNA-Cy3/tsDNA-Cy5), intermediate (ssDNA-Cy5/tsDNA-Cy3) and almost no binding to the droplet periphery (ssDNA-Cy5/tsDNA-Atto488). The apparent  $K_D$  is strongly influenced by fluorophore modifications on ssDNA and tsDNA up to the point of almost full inhibition of binding, which results in  $K_D \gg 1$ . Error bars correspond to the standard deviation of  $n = 41$  droplets for ssDNA/tsDNA-Cy5,  $n = 32$  for ssDNA/tsDNA-Cy3,  $n = 11$  for ssDNA/tsDNA-Atto488,  $n = 49$  for ssDNA/tsDNA-Atto647,  $n = 73$  for ssDNA-Cy3/tsDNA-Cy5,  $n = 29$  for ssDNA-Cy3/tsDNA-Atto488,  $n = 67$  for ssDNA-Cy3/tsDNA-Atto647,  $n = 27$  for ssDNA-Cy5/tsDNA-Cy3,  $n = 31$  for ssDNA-Cy5/tsDNA-Atto488,  $n = 72$  for ssDNA-Alexa488/tsDNA-Cy5,  $n = 29$  for ssDNA-Alexa488/tsDNA-Cy3 and  $n = 68$  for ssDNA-Alexa488/tsDNA-Atto647.

exchanged as required by the experiment. Here, we determined why the exchange of fluorophores on dynamic DNA nanostructures can lead to a considerably different experimental outcome. We used a popular pH-sensitive DNA motif combined with a strand displacement reaction as an example to show that the fluorophore alone can alter the steady-state and even completely inhibit the dynamics. Strand-displacement is one of the best understood and highly specific methods of actuating large DNA devices, but still has a large potential for improvement with respect to kinetics (49). Addressing this challenge, we find that fluorophores tend to stabilize the equilibrium states of the system with different effects on its dynamics, whereby Cy-dyes are more prone to inhibit dynamics compared to Atto-dyes. Beyond fluorophore labelling, DNA nanotechnology uses a myriad of other chemical modifications on the DNA, from reactive amine or thiol groups, hydrophobic tags, spacers, photocleavable groups or modifications for click chemistry (50). We anticipate that our observations are not limited to dye molecules – these other chemical modification would very likely have similar effects. It is thus generally possible to shape the energy landscape for dynamic reconfiguration as well as the equilibrium configuration without changing the DNA sequence.

Our results are directly relevant for various applications that capitalize on dynamic DNA systems, from bottom-up synthetic biology to biosensing and the increasingly popular superresolution technique DNA-PAINT (23). Without doubt, the possibility to precisely shape energy landscapes for dynamic DNA nanostructures will lead to metastable DNA nanostructures and fully reversible DNA devices with unprecedented complexity – mimicking the intricate workings of natural nanomachines.

#### DATA AVAILABILITY

The experimental data sets were appended to this submission. The MD trajectories, encompassing several TB of data, are available from the authors upon request.

#### SUPPLEMENTARY DATA

Supplementary Data are available at NAR Online.

#### ACKNOWLEDGEMENTS

The authors acknowledge Tobias Abele for help with the analysis of the droplet's peripheral intensity.



## FUNDING

K.G. acknowledges funding from the Deutsche Forschungsgemeinschaft (DFG, German Research Foundation) under Germany's Excellence Strategy via the Excellence Cluster 3D Matter Made to Order [EXC-2082/1 – 390761711]; DFG via the principal investigator grant [IG 109/1-1 to M.I.]; Computational resources were provided by the Max Planck Computing and Data Facility and the Leibniz Supercomputing Centre (Garching, Germany); K.J. thanks the Carl Zeiss Foundation for financial support; all authors acknowledge the Max Planck Society for its general support. Funding for open access charge: Max Planck Vorhaben [M.TN.A.MEFO0001].

*Conflict of interest statement.* None declared.

## REFERENCES

- Ramezani, H. and Dietz, H. (2020) Building machines with DNA molecules. *Nat. Rev. Genet.*, **21**, 5–26.
- Nickels, P.C., Wunsch, B., Holzmeister, P., Bae, W., Kneer, L.M., Grohmann, D., Tinnefeld, P. and Liedl, T. (2016) Molecular force spectroscopy with a DNA origami-based nanoscopic force clamp. *Science*, **354**, 305–307.
- Dutta, P.K., Zhang, Y., Blanchard, A.T., Ge, C., Rushdi, M., Weiss, K., Zhu, C., Ke, Y. and Salaita, K. (2018) Programmable multivalent DNA-origami tension probes for reporting cellular traction forces. *Nano Lett.*, **18**, 4803–4811.
- Green, L.N., Amodio, A., Subramanian, H. K.K., Ricci, F. and Franco, E. (2017) pH-driven reversible self-assembly of micron-scale DNA scaffolds. *Nano Lett.*, **17**, 7283–7288.
- Ausländer, S., Ausländer, D. and Fussenegger, M. (2017) Synthetic biology—the synthesis of biology. *Angew. Chem. Int. Ed.*, **56**, 6396–6419.
- Jiang, Q., Song, C., Nangreave, J., Liu, X., Lin, L., Qiu, D., Wang, Z.-G., Zou, G., Liang, X., Yan, H. and Ding, B. (2012) DNA origami as a carrier for circumvention of drug resistance. *J. Am. Chem. Soc.*, **134**, 13396–13403.
- Wang, C., Vázquez-González, M., Fadeev, M., Sohn, Y.S., Nechushtai, R. and Willner, I. (2020) Thermoplasmonic-triggered release of loads from DNA-modified hydrogel microcapsules functionalized with Au nanoparticles or Au nanorods. *Small*, **16**, 2000880.
- Marras, A.E., Zhou, L., Su, H.-J. and Castro, C.E. (2015) Programmable motion of DNA origami mechanisms. *Proc. Natl. Acad. Sci. U.S.A.*, **112**, 713–718.
- Simmel, F.C. and Schulman, R. (2017) Self-organizing materials built with DNA. *MRS Bull.*, **42**, 913–919.
- Franquelim, H.G., Dietz, H. and Schwill, P. (2021) Reversible membrane deformations by straight DNA origami filaments. *Soft Matter*, **17**, 276–287.
- Jahnke, K., Weiss, M., Frey, C., Antona, S., Janiesch, J.-W., Platzman, I., Göpfrich, K. and Spatz, J.P. (2019) Programmable functionalization of surfactant-stabilized microfluidic droplets via DNA-tags. *Adv. Funct. Mater.*, **29**, 1808647.
- Jahnke, K., Weiss, M., Weber, C., Platzman, I., Göpfrich, K. and Spatz, J.P. (2020) Engineering light-responsive contractile actomyosin networks with DNA nanotechnology. *Adv. Biosyst.*, **4**, 2000102.
- Zhang, D.Y. and Winfree, E. (2009) Control of DNA strand displacement kinetics using toehold exchange. *J. Am. Chem. Soc.*, **131**, 17303–17314.
- Irmisch, P., Ouldrige, T.E. and Seidel, R. (2020) Modeling DNA-strand displacement reactions in the presence of base-pair mismatches. *J. Am. Chem. Soc.*, **142**, 11451–11463.
- Kopperger, E., List, J., Madhira, S., Rothfischer, F., Lamb, D.C. and Simmel, F.C. (2018) A self-assembled nanoscale robotic arm controlled by electric fields. *Science*, **359**, 296–301.
- Hernández-Ainsa, S., Ricci, M., Hilton, L., Aviñó, A., Eritja, R. and Keyser, U.F. (2016) Controlling the reversible assembly of liposomes through a multistimuli responsive anchored DNA. *Nano Lett.*, **16**, 4462–4466.
- Turek, V.A., Chikkaraddy, R., Cormier, S., Stockham, B., Ding, T., Keyser, U.F. and Baumberg, J.J. (2018) Thermo-responsive actuation of a DNA origami flexor. *Adv. Funct. Mater.*, **28**, 1706410.
- Wang, J., Yue, L., Wang, S. and Willner, I. (2018) Triggered reversible reconfiguration of G-quadruplex-bridged 'Domino'-type origami dimers: application of the systems for programmed catalysis. *ACS Nano*, **12**, 12324–12336.
- Chen, Y., Lee, S.-H. and Mao, C. (2004) A DNA nanomachine based on a duplex–triple transition. *Angewandte Chemie*, **116**, 5449–5452.
- Yang, M., Zhang, X., Liu, H., Kang, H., Zhu, Z., Yang, W. and Tan, W. (2015) Stable DNA nanomachine based on duplex–triple transition for ratiometric imaging instantaneous pH changes in living cells. *Anal. Chem.*, **87**, 5854–5859.
- Patino, T., Porchetta, A., Jannasch, A., Lladó, A., Stumpp, T., Schäffer, E., Ricci, F. and Sánchez, S. (2019) Self-sensing enzyme-powered micromotors equipped with pH-responsive DNA nanoswitches. *Nano Lett.*, **19**, 3440–3447.
- Weiss, L.E., Ezra, Y.S., Goldberg, S., Ferdman, B., Adir, O., Schroeder, A., Alalouf, O. and Shechtman, Y. (2020) Three-dimensional localization microscopy in live flowing cells. *Nat. Nanotechnol.*, **15**, 500–506.
- Cnossen, J., Hinsdale, T., Thorsen, R.Ø., Siemons, M., Schueder, F., Jungmann, R., Smith, C.S., Rieger, B. and Stallinga, S. (2020) Localization microscopy at doubled precision with patterned illumination. *Nat. Methods*, **17**, 59–63.
- Moreira, B.G., You, Y. and Owczarzy, R. (2015) Cy3 and Cy5 dyes attached to oligonucleotide terminus stabilize DNA duplexes: predictive thermodynamic model. *Biophys. Chem.*, **198**, 36–44.
- Kaji, T., Ito, S., Iwai, S. and Miyasaka, H. (2009) Nanosecond to submillisecond dynamics in dye-labeled single-stranded DNA, as revealed by ensemble measurements and photon statistics at single-molecule level. *J. Phys. Chem. B*, **113**, 13917–13925.
- Göpfrich, K., Haller, B., Stauer, O., Dreher, Y., Mersdorf, U., Platzman, I. and Spatz, J.P. (2019) One-pot assembly of complex giant unilamellar vesicle-based synthetic cells. *ACS Synth. Biol.*, **8**, 937–947.
- Jahnke, K., Ritzmann, N., Fichtler, J., Nitschke, A., Dreher, Y., Abele, T., Hofhaus, G., Platzman, I., Schröder, R., Müller, D. et al. (2020) Actuation of synthetic cells with proton gradients generated by light-harvesting *E. coli*. doi:10.21203/rs.3.rs-82114/v1.
- Ivani, I., Dans, P.D., Noy, A., Pérez, A., Faustino, I., Hospital, A., Walther, J., Andrio, P., Goñi, R., Balaceanu, A. et al. (2015) Parmbsc1: a refined force field for DNA simulations. *Nat. Methods*, **13**, 55–58.
- Hornak, V., Abel, R., Okur, A., Strockbine, B., Roitberg, A. and Simmerling, C. (2006) Comparison of multiple Amber force fields and development of improved protein backbone parameters. *Proteins: Struct. Funct. Bioinformatics*, **65**, 712–725.
- Yoo, J. and Aksimentiev, A. (2018) New tricks for old dogs: Improving the accuracy of biomolecular force fields by pair-specific corrections to non-bonded interactions. *Phys. Chem. Chem. Phys.*, **20**, 8432–8449.
- Joung, I.S. and Cheatham, T.E. (2008) Determination of alkali and halide monovalent ion parameters for use in explicitly solvated biomolecular simulations. *J. Phys. Chem. B*, **112**, 9020–9041.
- Chatterjee, S., Debenedetti, P.G., Stillinger, F.H. and Lynden-Bell, R.M. (2008) A computational investigation of thermodynamics, structure, dynamics and solvation behavior in modified water models. *J. Chem. Phys.*, **128**, 124511.
- Pettersen, E.F., Goddard, T.D., Huang, C.C., Couch, G.S., Greenblatt, D.M., Meng, E.C. and Ferrin, T.E. (2004) UCSF chimera - a visualization system for exploratory research and analysis. *J. Comput. Chem.*, **25**, 1605–1612.
- Abraham, M., van der Spoel, D., Lindahl, E. and Hess, B. (2019) GROMACS user manual version 2019. <http://doi.org/10.5281/zenodo.2424486>.
- Essmann, U., Perera, L., Berkowitz, M.L., Darden, T., Lee, H. and Pedersen, L.G. (1995) A smooth particle mesh Ewald method. *J. Chem. Phys.*, **103**, 8577–8593.
- Hess, B., Kutzner, C., van der Spoel, D. and Lindahl, E. (2008) GROMACS 4: algorithms for highly efficient, load-balanced, and scalable molecular simulation. *J. Chem. Theory. Comput.*, **4**, 435–47.
- Bussi, G., Donadio, D. and Parrinello, M. (2007) Canonical sampling through velocity rescaling. *J. Chem. Phys.*, **126**, 014101.

38. Berendsen, H. J.C., Postma, J. P.M., van Gunsteren, W.F., DiNola, A. and Haak, J.R. (1984) Molecular dynamics with coupling to an external bath. *J. Chem. Phys.*, **81**, 3684–3690.
39. Parrinello, M. and Rahman, A. (1981) Polymorphic transitions in single crystals: a new molecular dynamics method. *J. Appl. Phys.*, **52**, 7182–7190.
40. Humphrey, W., Dalke, A. and Schulten, K. (1996) VMD: visual molecular dynamics. *J. Mol. Graphics*, **14**, 33–38.
41. Graen, T., Hoefling, M. and Grubmüller, H. (2014) AMBER-DYES: characterization of charge fluctuations and force field parameterization of fluorescent dyes for molecular dynamics simulations. *J. Chem. Theory. Comput.*, **10**, 5505–5512.
42. Hale, J. and Raugel, G. (1992) Partial differential equations on thin domains. In: *Mathematics in Science and Engineering*. pp. 63–97.
43. Fibich, G., Gannot, I., Hammer, A. and Schochet, S. (2007) Chemical kinetics on surfaces: a singular limit of a reaction-diffusion system. *SIAM J. Math. Anal.*, **38**, 1371–1388.
44. Hub, J.S., De Groot, B.L. and van der Spoel, D. (2010) g\_wham - a free weighted histogram analysis implementation including robust error and autocorrelation estimates. *J. Chem. Theory. Comput.*, **6**, 3713–3720.
45. Czogalla, A., Franquelim, H.G. and Schwille, P. (2016) DNA nanostructures on membranes as tools for synthetic biology. *Biophys. J.*, **110**, 1698–707.
46. Idili, A., Vallée-Bélisle, A. and Ricci, F. (2014) Programmable pH-triggered DNA nanoswitches. *J. Am. Chem. Soc.*, **136**, 5836–5839.
47. Zanetti-Domingues, L.C., Tynan, C.J., Rolfe, D.J., Clarke, D.T. and Martin-Fernandez, M. (2013) Hydrophobic fluorescent probes introduce artifacts into single molecule tracking experiments due to non-specific binding. *PLoS ONE*, **8**, e74200.
48. Abbruzzetti, S., Sottini, S., Viappiani, C. and Corrie, J. E.T. (2005) Kinetics of proton release after flash photolysis of 1-(2-nitrophenyl)ethyl sulfate (caged sulfate) in aqueous solution. *J. Am. Chem. Soc.*, **127**, 9865–9874.
49. DeLuca, M., Shi, Z., Castro, C.E. and Arya, G. (2020) Dynamic DNA nanotechnology: toward functional nanoscale devices. *Nanoscale Horiz.*, **5**, 182–201.
50. Madsen, M. and Gothelf, K.V. (2019) Chemistries for DNA nanotechnology. *Chem. Rev.*, **119**, 6384–6458.