

RESEARCH ARTICLE

Acanthamoeba profilin elicits allergic airway inflammation in mice

So Myung Song¹, Shin Ae Kang¹, Hye Kyung Park², Dong Hee Kim³, So Young Park^{1,4}, Se Bok Jang⁴, Hak Sun Yu^{1*}

1 Department of Parasitology School of Medicine, Pusan National University, Yangsan, Gyeongsangnam-do, South Korea, **2** Department of Internal Medicine, School of Medicine, Pusan National University, Yangsan, Gyeongsangnam-do, South Korea, **3** Department of Nursing, College of Nursing, Pusan National University, Yangsan, Gyeongsangnam-do, South Korea, **4** Department of Molecular Biology, College of Natural Sciences, Pusan National University, Busan, South Korea

* hsyu@pusan.ac.kr



Abstract

Background

In previous studies, we suggested that *Acanthamoeba* is a new aero-allergen and that patients who showed positive results for the skin-prick test response to *Acanthamoeba* cross-reacted with several pollen allergens. Additionally, patients with common antibodies reacted to the 13–15 kDa *Acanthamoeba* unknown allergen.

Objective

We examined whether profilin of *Acanthamoeba* is a human airway allergic agent because of its molecular weight.

Methods

We expressed recombinant Ac-PF (rAc-PF) protein using an *Escherichia coli* expression system and evaluated whether Ac-PF is an airway allergic agent using an allergic airway inflammation animal model.

Results

Airway hyperresponsiveness was increased in rAc-PF-inoculated mice. The number of eosinophils and levels of Th2 cytokines, interleukin (IL)-4, IL-5, and IL-13 were increased in the bronchial alveolar lavage fluid of rAc-PF-treated mice. The lungs of the rAc-PF-treated mice group showed enhanced mucin production and metaplasia of lung epithelial cells and goblet cells.

Conclusion

In this study, we demonstrated that rAc-PF may be an allergen in *Acanthamoeba*, but further studies needed to identify the mechanisms of allergenic reactions induced by Ac-PF.

OPEN ACCESS

Citation: Song SM, Kang SA, Park HK, Kim DH, Park SY, Jang SB, et al. (2018) *Acanthamoeba* profilin elicits allergic airway inflammation in mice. PLoS Negl Trop Dis 12(12): e0006979. <https://doi.org/10.1371/journal.pntd.0006979>

Editor: Kenji Hirayama, Institute of Tropical Medicine (NEKKEN), Nagasaki University, JAPAN

Received: June 6, 2018

Accepted: November 8, 2018

Published: December 17, 2018

Copyright: © 2018 Song et al. This is an open access article distributed under the terms of the [Creative Commons Attribution License](https://creativecommons.org/licenses/by/4.0/), which permits unrestricted use, distribution, and reproduction in any medium, provided the original author and source are credited.

Data Availability Statement: All relevant data are within the paper.

Funding: This work was supported by a 2-Year Research Grant of Pusan National University. The funders had no role in study design, data collection and analysis, decision to publish, or preparation of the manuscript.

Competing interests: The authors have declared that no competing interests exist.

Author summary

Recently, the number of asthma patients have increased sharply. Among patients with asthma have a high serum IgE titer, but despite this, some of these patients do not react to known allergens in skin prick tests, that suggests the presence of unknown environmental allergens. The protozoa *Acanthamoeba* live in very diverse environment including water, soil, air and even human nasal cavities, throat, pharynx and lung. In previous study, *Acanthamoeba* could be a new aero-allergen. Patients who showed positive results for the skin-prick test response to *Acanthamoeba*, their serum could be cross-reacted with several pollen allergens as well as *Acanthamoeba* total proteins. Additionally, the patients have common antibodies reacted to the 13–15 kDa *Acanthamoeba* unknown allergen. Profilin, which is found in all eukaryotic organisms in most cells, is an actin-binding protein that interferes with nucleation and restructuring of new filaments. Recent studies showed that profilin functions as a pan-allergen recognized by IgE in approximately 20% of birch pollen and plant food allergic patients. In *Acanthamoeba*, two isoforms of profilin (Ac-PF) have been identified: profilin-I and profilin-II. We examined profilin from *Acanthamoeba* as a potential human airway allergic agent because of its molecular weight (13–14 kDa) and cross-reactivity with several pollen allergens in the skin prick test showing positive results for *Acanthamoeba* in chronic cough patients. In this study, we expressed recombinant Ac-PF (rAc-PF) protein using an *Escherichia coli* expression system and evaluated whether Ac-PF is an airway allergic agent using an asthma animal model. Our study showed that rAc-PF may be an allergen in *Acanthamoeba*, but further studies needed to identify the mechanisms of allergenic reactions induced by Ac-PF.

Introduction

Allergic airway inflammation is characterized by the production of allergen-specific immunoglobulin (Ig) E and Th2 cytokines including interleukin (IL)-4, IL-5, and IL-13 which lead to the immune cell recruitment and sensitization of effector cells such as eosinophils, basophils, and mast cells [1]. These allergic reactions are typically induced by allergens. Marsh *et al.* described highly purified and well-characterized allergens such as the pollen of grasses, weeds, and trees, as well as house dust mites, fungal spores, and dander from animals [2].

Acanthamoeba, pathogenic and opportunistic free-living amoebae [3], is protozoa genus that can survive in various environments and is isolated from the soil, dust, air, water seawater, swimming pools, domestic tap water, and contact lenses and cases [4]. Additionally, excretory-secretory (ES) proteins from *Acanthamoeba* species contain strong proteases [5, 6]. Our previous studies demonstrated that *Acanthamoeba* may be aero-allergens [7, 8]. Six *Acanthamoeba* trophozoite intranasal (I.N.) treatments induced allergic airway inflammation in mice [7]. Moreover, patients showing positive results to the skin-prick test response to *Acanthamoeba* exhibited higher *Acanthamoeba*-specific IgE levels compared to other patients and healthy persons [8]. Interestingly, patients who showed a positive skin-prick test response to *Acanthamoeba* exhibited cross-reactivity with several pollen allergens, including willow tree, poplar, elm, oak, velvet grass, and cockroach. In western blot analysis, chronic cough patients IgE antibodies reacted with ~15-kDa components of *Acanthamoeba* [8]. We examined profilin from *Acanthamoeba* as a potential human airway allergic agent because of its molecular weight (13–14 kDa) and cross-reactivity with several pollen allergens in the skin prick test showing positive results for *Acanthamoeba* in chronic cough patients [8]. In *Acanthamoeba*, two isoforms of profilin (Ac-PF) have been identified: profilin-I and profilin-II [9, 10].

Profilin, which is found in all eukaryotic organisms in most cells, is an actin-binding protein that interferes with nucleation and restructuring of new filaments [11–13]. Recent studies showed that profilin functions as a pan-allergen recognized by IgE in approximately 20% of birch pollen and plant food allergic patients [14]. *BetvI*, which is one of the main causes of Type I allergic reactions, is an allergenic protein from the pollen of the white birch (*Betula verrucosa*) and related to IgE binding in more than 95% of birch pollen allergic patients [15, 16]. Valenta *et al.* prepared cDNAs encoding IgE-binding birch pollen protein that differed from *BetvI*. This protein appeared to act as an allergen in individuals allergic to pollens of grasses and weeds. Furthermore, IgE antibodies from birch allergic individuals showed cross-reactivity with human profilin [17]. Another study confirmed that 23% of 30 celery allergic patients were sensitive to profilin [18, 19].

In this study, we expressed recombinant Ac-PF (rAc-PF) protein using an *Escherichia coli* expression system and evaluated whether Ac-PF is an airway allergic agent using an asthma animal model.

Methods

Acanthamoeba cultivation and total protein extraction

Acanthamoeba lugdunensis KA/E2 strain, isolated from human cornea inflammation patient in Korea, it was maintained in PYG medium. The KA/E2 strain has the same molecular characteristics as the *A. lugdunensis* L3A strain (ATCC 50240) [20]. To obtain total protein, live trophozoites were incubated in PYG medium for one week at 25°C. Following centrifugation at 12,000g for 30 min, the total protein was extracted from the pellet according to protocol of manufacture (Cell lysis, ThermoFisher Scientific Co. Waltham, MA USA). After obtaining total proteins, the ToxinSensor Gel Clot Endotoxin Assay Kit (Gen-Script, Piscataway, New Jersey, USA) was used to eliminate endotoxins.

Cloning, expression, and extraction of Ac-RF

To amplify full-length Ac-RF, we designed primers based on the *A. castellanii* profilin I gene (GenBank No. XP_004351646.1). The primer sequences were as follows: Forward; 5'-GGA ATT CCA TAT GTC CTG GCA GAC GTA CG-3' Reverse; 5'-CCG CTC GAG AAA GCC CTG ACC GAT GA-3'. Total RNA was extracted from *Acanthamoeba sp.* KA/E2 trophozoite using 1 mL of LPS Solution (Biozol, Eching, Germany), and cDNA was synthesized using MMLV reverse transcriptase (Promega, Madison, WI, USA) according to the manufacturer's protocols. After confirming the PCR product, the fragment was subcloned into the C-terminal His-tagged fusion protein vector pET-26b. The constructs were transformed into the expression host *E. coli* BL21 (DE3). Expression of rAc-PF was induced with 0.5 mM isopropyl-thio-β-D-galactopyranoside for 4 h. The *E. coli* cell pellets were resuspended in lysis buffer [50 mM Tris-HCl (pH 7.5), 200 mM NaCl, and 1 mM dithiothreitol]. After sonication cell suspensions on ice (Branson Sonifier 450, Branson Ultrasonics, Danbury, CT, USA), the resulting cell lysates were centrifuged at 10,000 ×g for 45 min to remove insoluble cellular debris. The soluble and insoluble portions were fractionated on 15% SDS-polyacrylamide gel electrophoresis (SDS-PAGE) gels and visualized by Coomassie blue staining. The supernatants were collected and used for protein purification. The His-tagged profilin fusion protein was applied to a Ni-NTA (Amersham Pharmacia Biotech, Amersham, UK) column for purification.

Protease activity

To evaluate the protease activity of rAc-PF, zymogram analysis was performed according to a previous study [7]. Briefly, rAc-PF and KA/E2 crude extract samples were mixed with 5× zymogram loading buffer and loaded on gelatin-gel, and electrophoresis was performed at 125 V for 60 min at 4°C. After electrophoresis, the gelatin-gel was incubated 30 min in zymogram renaturation buffer. After development, the gel was stained with Coomassie Brilliant Blue R-250 overnight and then destained.

Production of polyclonal antisera for rAc-PF

Four-week-old female Wistar rat was purchased from Samtako Co. (Gyeonggi-do, Korea). Rats were immunized subcutaneously with a combination of 500 µg (in 0.5 mL PBS) of rAc-PF and 0.5 mL Freund's complete adjuvant (Sigma-Aldrich, St. Louis, MO, USA). After 2 weeks, a 2nd subcutaneous injection was performed with the same dose of rAc-PF and 0.5 mL Freund's incomplete adjuvant. Two weeks after the final booster, rats were sacrificed and the serum was obtained.

Western blotting

The rAc-PF and KA/E2 total proteins were loaded each well of a 12% acrylamide SDS-PAGE gel. The loaded proteins were transferred onto nitrocellulose membranes (Amersham Biosciences, Amersham, UK), and then blocked with 5% skim milk in TBS-T at 4°C overnight. After one day, the membrane was incubated with primary antibody in 5% skim milk in TBS-T at 4°C overnight. The secondary antibody, anti-rat IgG-horseradish peroxidase conjugate (Sigma) was reacted for 1 h at 24°C. Reactants were analyzed using ECL kit (Amersham Biosciences) using the LAS-3000 program.

Experimental design for inducing allergic airway inflammation by rAc-PF

Six-week-old female C57BL/6 mice were purchased from Orient-bio Co. (Gyeonggi-do, Korea). The mice were maintained in a specific pathogen-free facility at the Institute for Laboratory Animals of Pusan National University during the experimental period. The mice were divided into 4 groups. Mice in the positive control group were intra-nasally administered 10 µg of *Aspergillus* protease (Sigma-Aldrich), a well-known substance that provoke allergic airway inflammation, 6 times at intervals of 2 days. Using the same protocol, mice in the other two groups were treated with each 10 and 50 µg of rAc-PF. On the day before sacrifice, airway hyperresponsiveness (AHR) was measured, and then the animals were sacrificed.

AHR measurements

At 24 h after the last challenge, airway responsiveness was evaluated by measuring the change in lung resistance in response to aerosolized methacholine (Sigma-Aldrich) according to Kang et al. [21]. Briefly, to measure bronchoconstriction, the enhanced pause (PenH) was measured at baseline (PBS aerosol; control) and after exposure to increasing doses of aerosolized methacholine (0–50 mg/mL) using whole-body plethysmography (Allmedicus, Korea). In the plethysmography procedure, the mice were acclimated for 3 min, exposed to nebulized saline for 10 min, and treated with increasing concentrations (0, 12.5, 25, and 50 mg/mL) of methacholine using an ultrasonic nebulizer (Omron, Japan). After each nebulization, the PenH values measured every three minutes during the experimental period were averaged. Graphs were generated showing the PenH values in response to increasing methacholine concentrations for each dose-matched group of mice.

Analysis of bronchoalveolar lavage fluid (BALF) and differential cell counting

To obtain the BALF, the tracheas of the anesthetized mice were exposed and cut just below the larynx. A flexible polyurethane tube (outer diameter; 0.4 mm, length; 4 cm; BD Biosciences, San Jose, CA, USA) attached to a blunt 24-gauge needle (Boin Medical Co., Seoul, Korea) was placed inside the trachea. Next, the lungs were lavaged once with 800 μ L of sterile cooling phosphate-buffered saline (PBS). The BALF samples were centrifuged for 5 min at 1500 \times g 4°C. The supernatants were moved to new microcentrifuge tube and frozen at -70°C; the remaining cell pellets were resuspended in 100 μ L of PBS. Total cells were counted using a hemacytometer. To observe the differential cell counts, the same number of BALF cells was centrifuged on the slides at 500 rpm for 5 min using a Cytospin apparatus (Micro 12TM, Hanil Co., Seoul, Korea). The slides were dried and stained with Diff-Quick solution (Sysmex Co., Kobe, Japan). At least 500 cells per slide were evaluated to analyze differential leukocyte counts.

Lymphocyte and splenocyte preparation

Following sacrifice, the blood serum of mice was obtained by cardiac puncture and lung-draining lymph nodes (LLNs) and spleen were collected. The LLN in normal mouse (PBS treated mouse) is too small to get enough number of lymphocytes for ELISA experiment, therefore we used only LLN of rAc-PF and *Aspergillus* protease treated group for ELISA experiment. Each LLN and spleen were ground with MONOJECT and treated with ammonium chloride potassium (ACK) hypotonic lysis solution (Sigma-Aldrich) for 1 min at room temperature for red blood cells lysis. After lysis, lymphocytes and splenocytes were filtered through 100- μ m meshes (Small Parts, Inc., Miramar, FL, USA) and then washed three times. Next, the cells were counted with a hemacytometer and plated in 48-well plate as 5×10^6 cells/mL in RPMI 1640 containing 10% fetal bovine serum and penicillin/streptomycin. For CD3 stimulation analysis, 0.5 μ g/mL anti-CD3 antibody was added to the plated cells. The plate was incubated at 37°C with 5% CO₂. After 72 h incubation, the culture supernatants were collected and stored at -20°C for enzyme-linked immunosorbent assay (ELISA) [22].

ELISA

ELISA was conducted to analyze the changes in IL-4, IL-5, and IL-13 levels in the BALF supernatant and stimulated culture supernatant of lymphocytes and splenocytes with an ELISA kit (ebioscience, San Diego, CA, USA). according to the manufacturer's protocols. A 96-well immunoplate was coated with capture antibody and incubated overnight at 4°C. Plates were blocked with 1% bovine serum albumin for 1 h at 37°C. Test samples and standards were added to the wells and incubated overnight at 4°C. The plates were washed with 200 μ L of PBS containing 0.1% Tween-20 5 times. Next, 100 μ L of biotin-conjugated anti-mouse detection antibodies were added to each well and incubated for 1 h at room-temperature. The plates were washed as described above and avidin-conjugated horseradish peroxidase was added for 30 min incubation at room temperature in the dark. Tetra-methyl-benzidine (100 μ L) was used to reveal the blue color and 100 μ L of diluted H₂SO₄ was added as the stop solution (Merck, Darmstadt, Germany). The solution in each well changed from blue to yellow. The absorbance of the final reactant was measured at 450 nm using an ELISA plate reader.

Lung histopathology and immunohistology scoring

Lung tissues were fixed in formalin solution for 24 h and embedded in paraffin wax. Thin sections of embedded lungs were stained with hematoxylin and eosin (H&E) to analyze

inflammatory cell infiltration and periodic acid-Schiff (PAS) reagent was used to quantify goblet cells. The sections were visualized by microscopy. The prevalence and severity of peribronchial and perivascular inflammation were scored by as previously described [23, 24]. A grade of 0 was assigned when no inflammation was detectable, while grade 4 indicated a high percentage of airways and blood vessels in the section cuffing by inflammatory cells (0 = normal tissue; 1 = <25%; 2 = 25–50%; 3 = 51–75%; 4 = >75%). Severity scoring was based on the thickness of the bronchi or vessels surrounded inflammatory cells (0 = no cells; 1 = 1–3; 2 = 4–6; 3 = 7–9 cells thickness; 4 = 10 or more cells thick). To quantify goblet cell metaplasia, the percentage of PAS-positive cells in hyperplasia areas was examined from 8 tissue sections per mouse.

***In vitro* stimulation to analyze Th2-related gene expression**

Mouse lung epithelial cells (MLE12) were obtained from ATCC (Manassas, VA, USA); 3×10^5 MLE12 cells were plated in 24-well plates and incubated overnight at 37°C. The cells were stimulated with rAc-PF and *Aspergillus* proteins for 3 h. Next, MLE12 cells were collected with 1 mL of QIAzol (Qiagen, Hilden, Germany), and RNA extraction was conducted in accordance with the manufacturer's protocols for transcription of 2 µg of RNA. Real-time PCR was performed to determine the levels of macrophage-derived chemokine (MDC; CCL22), eotaxin (CCL11), thymic stromal lymphopoietin (TSLP), and IL-25 RNA. GAPDH was used as an internal reference. The primers and PCR conditions used have been described previously [25, 26].

Statistical analysis

All experiments were conducted three times for statistical analysis. The mean ± SD was calculated from data collected from different mice. Significant differences were determined using *t*-tests (and nonparametric tests) of variance. Statistical analysis was performed with GraphPad Prism 5.0 software (GraphPad Software Inc., La Jolla, CA, USA).

Ethics statement

The study was performed with approval from the Pusan National University Animal Care and Use Committee (IACUC protocol approval; PNU-2016-1358), in compliance with “The Act for the Care and Use of Laboratory Animals” of the Ministry of Food and Drug Safety, Korea. All animal procedures were conducted in a specific pathogen-free facility at the Institute for Laboratory Animals of Pusan National University.

Results

Expression of recombinant Ac-PF (rAc-PF) using *E. coli* expression system

After expression of rAc-PF, an approximately 15-kDa recombinant protein was detected by SDS-PAGE (Fig 1A). To confirm the expression of Ac-PF in *Acanthamoeba*, a polyclonal anti-rAc-PF antibody was produced and reacted with *Acanthamoeba* total proteins. An approximately 13-kDa protein in the *Acanthamoeba* total protein reacted with the anti-rAc-PF antibody. Because rAc-PF has 6 histidine tags, the size was slightly larger than Ac-PF alone (Fig 1B). To evaluate the protease activities of rAc-PF, we conducted zymogram analysis and compared the results with those of the total protein of *Acanthamoeba* KA/E2. The KA/E2 total protein showed strong protease activity, while rAc-PF did not show this activity (Fig 1C).

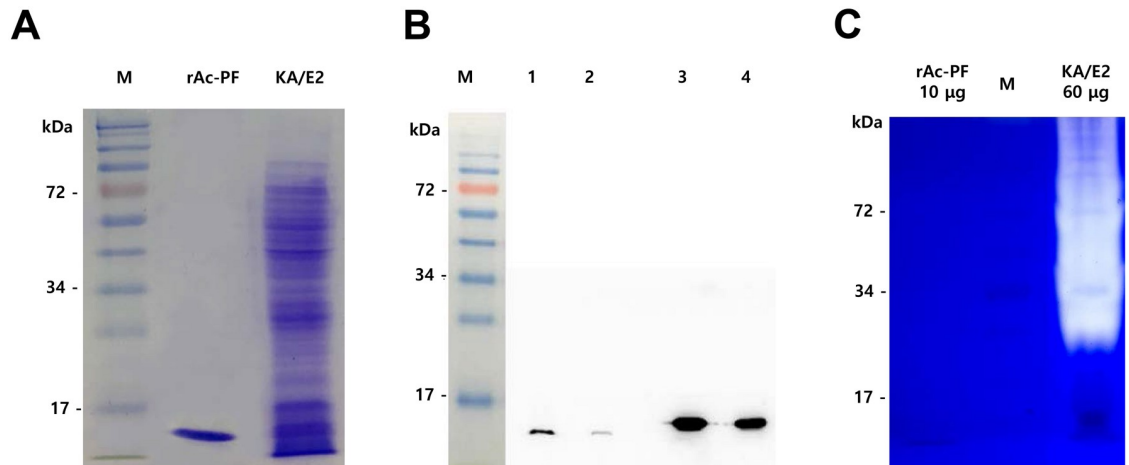


Fig 1. Expression of rAc-PF and evaluation of Ac-PF expression in *Acanthamoeba*. (A) First, 3 µg of rAc-PF and 120 µg of KA/E2 total proteins were loaded into each well for 12% acrylamide SDS-PAGE. (B) After separation, the proteins were transferred to a nitrocellulose membrane and anti-rAc-PF and Rat IgG-horseradish peroxidase were reacted as primary and secondary antibodies (each 1:1000 diluted). Lane M; protein molecular marker, lane 1; 100 µg of KA/E2 total proteins, lane 2; 20 µg of KA/E2 total proteins, lane 3; 5 µg rAc-PF, lane 4; 2 µg rAc-PF. (C) The samples were incubated for 2 h and assayed by zymography by 0.1% gelatin SDS-PAGE. A clear background against dark-blue where the protease digested the substrate indicated protease activity, (M; protein molecular marker, rAc-PF, recombinant Ac-PF, KA/E2, total protein of KA/E2).

<https://doi.org/10.1371/journal.pntd.0006979.g001>

rAc-PF provoked allergic airway inflammation

To evaluate the effect of Ac-PF on allergic airway inflammation in mice, *Aspergillus* protease (Sigma-Aldrich), which is well known as a strong allergen, and rAc-PF were treated intranasally 6 times in each mouse. Airway hyperresponsiveness to a 0–50 mg/mL dose of methacholine was increased in the rAc-PF inoculated mouse group (Fig 2A). Additionally, the numbers of eosinophils, neutrophils, and lymphocytes were increased in the BALF of rAc-PF-treated

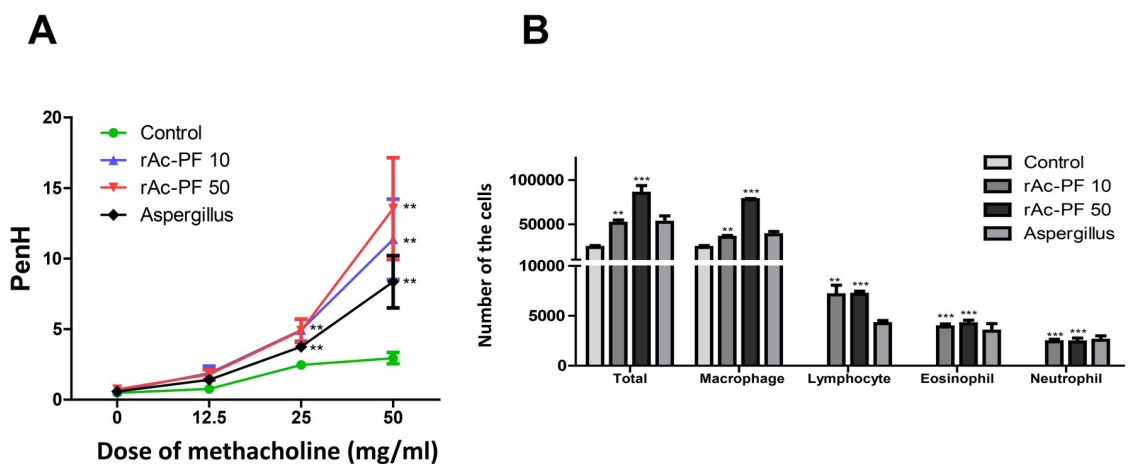


Fig 2. Airway hyperresponsiveness and differential cell counts in BALF. Allergic airway inflammation was induced by 6 intranasal (I.N.) administrations of 10 or 50 µg rAc-PF in mice. (A) Measurement of airway hyperresponsiveness to methacholine (0–50 mg/mL). (B) After the BALF was obtained by lavage through the tracheas with 800 µL of sterile PBS using a blunt 24-gauge needle, cells were isolated by centrifugation. Cells were stained with Diff-Quick solution (Sysmex Co., Shanghai, China) and then differential cells were counted. (Control; PBS I.N. treatment, rAc-PF 10; 10 µg rAc-PF I.N. treatment, rAc-PF 50; 50 µg rAc-PF I.N. treatment, *Aspergillus*; 10 µg *Aspergillus* protease I.N. treatment, **p* < 0.05, ***p* < 0.01, ****p* < 0.001, *n* = 6 mice/group, 3 independent experiments).

<https://doi.org/10.1371/journal.pntd.0006979.g002>

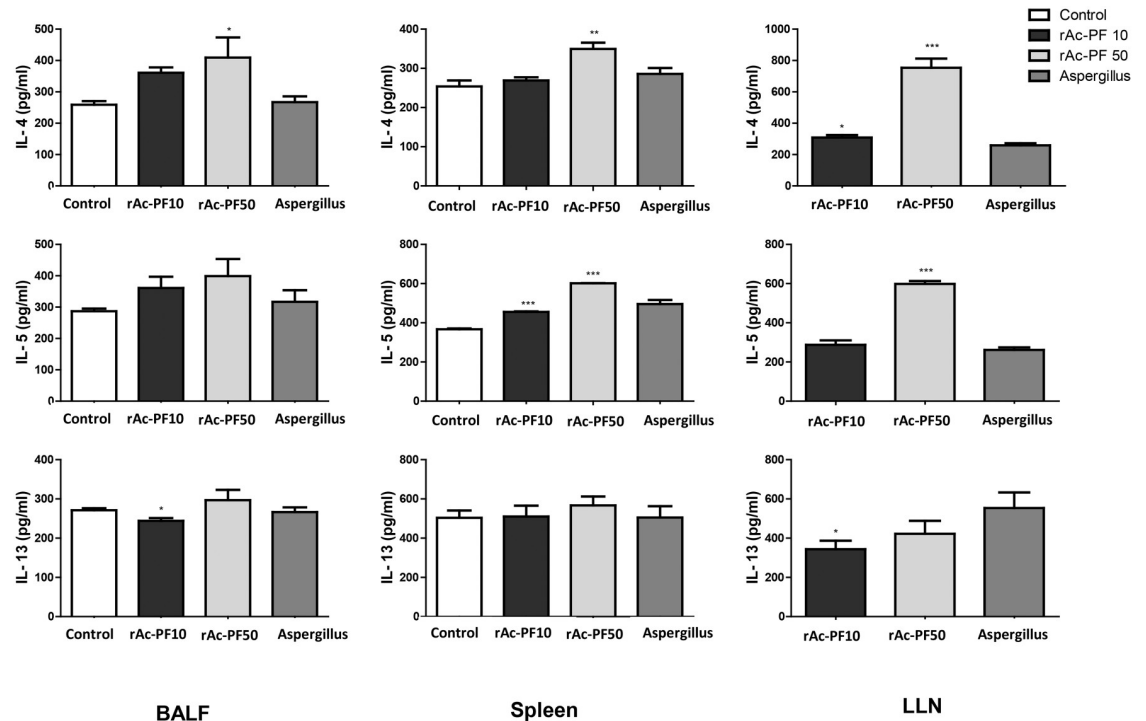


Fig 3. Expression levels of Th2 cytokines in various immune organs after treatment with rAc-PF. Th2 cytokine (IL-4, IL-5, and IL-13) concentrations in the BALF and culture supernatants of CD3-stimulated lymphocytes from LLN and splenocytes were measured by ELISA. The plates were read at 450 nm on a standard ELISA reader, VICTOR 3 (Each *p*-value was determined based on *t*-test methods compared to control. **p* < 0.05, ***p* < 0.01, ****p* < 0.001, n = 6 mice/group, 3 independent experiments, Control; PBS I.N. treatment, rAc-PF 10; 10 μg rAc-PF I.N. treatment, rAc-PF 50; 50 μg rAc-PF I.N. treatment, *Aspergillus*; 10 μg *Aspergillus* protease I.N. treatment).

<https://doi.org/10.1371/journal.pntd.0006979.g003>

mice (Fig 2B). The levels of Th2 cytokines, IL-4, IL-5, and IL-13, in the BALF and culture supernatants of the LLN and spleen were increased in the rAc-PF-treated groups compared to in the control group (Fig 3).

Treatment of rAc-PF induced inflammatory cell infiltration and hyperplasia of goblet cells in the lungs

To examine whether Ac-PF influences bronchial trees, we focused on histological changes in the lung tissue. Lungs from treated and non-treated mice were isolated and stained with H&E to analyze inflammatory cell infiltration and PAS to quantify goblet cells. The lungs of rAc-PF and *Aspergillus* protease-treated group mice showed dramatic immune cell infiltration surrounding the bronchial trees and vessels, enhanced mucin production, and metaplasia of lung epithelial cells and goblet cells (Fig 4A). For histopathological analysis, the inflammation score was determined as the prevalence and severity of inflammation. Peri-bronchiolar and peri-vascular inflammation scores were significantly higher compared to in non-treated mice. Additionally, PAS-positive cells (goblet cells) were significantly increased compared to in the control group (Fig 4B).

Treatment of rAc-PF induced Th2 chemokines gene expression in mouse lung

To evaluate whether rAc-PF influences lung epithelial cells, Th2 chemokine gene expression levels were examined after treating MLE12 cells with rAc-PF. After 3hr later, the treatment

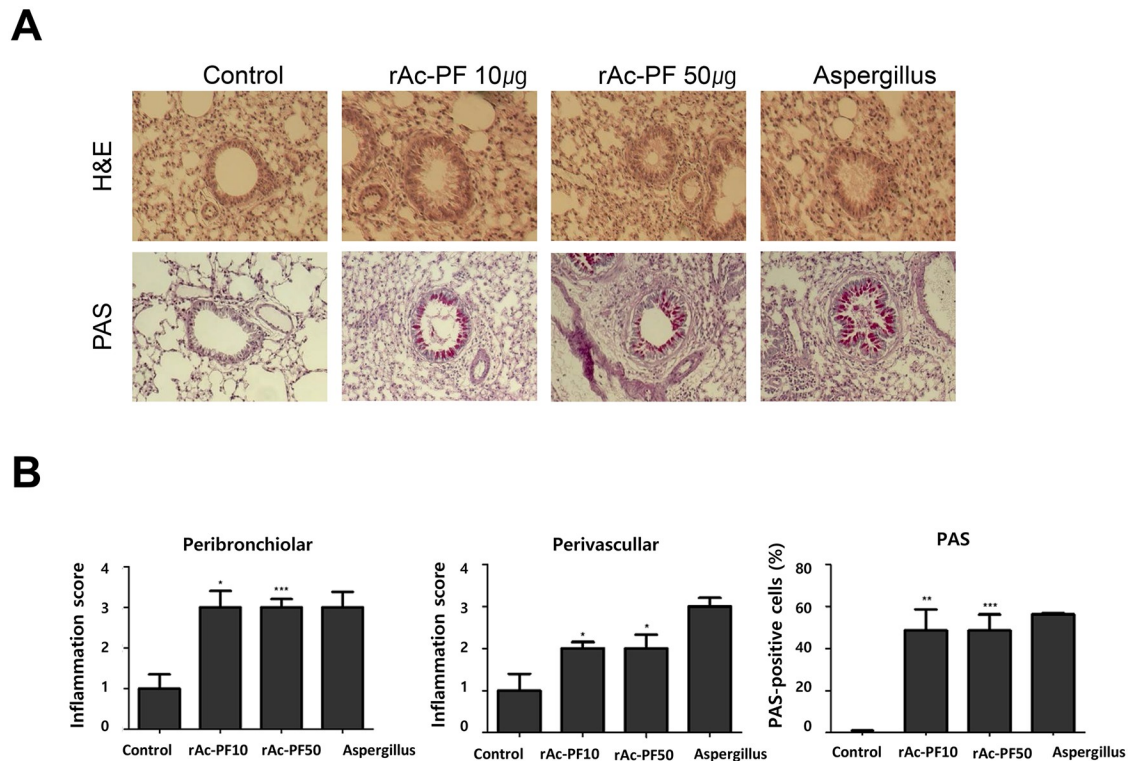


Fig 4. Representative histopathological changes after rAc-PF treatment. (A) Lung tissue inflammation observed on images of lung sections after H&E and PAS staining. (B) Representative of inflammation scoring and PAS-positive cells (mean \pm SEM). A grade of 0, when no inflammation was detectable, to a grade 4 for high percentages of airways and blood vessels in section cuffing by inflammatory cells (0 = normal tissue; 1 = <25%; 2 = 25–50%; 3 = 51–75%; 4 = >75%). Severity scoring was based on the thickness of bronchi or vessels surrounded inflammatory cells (0 = no cells; 1 = 1–3; 2 = 4–6; 3 = 7–9 cells thick; 4 = 10 or more cells thick). Means of p -value was measured to compare to control (* p < 0.05, ** p < 0.01, *** p < 0.001, n = 6 mice/group, 3 independent experiments, Control; PBS I.N. treatment, rAc-PF 10; 10 μ g rAc-PF I.N. treatment, rAc-PF 50; 50 μ g rAc-PF I.N. treatment, *Aspergillus*; 10 μ g *Aspergillus* protease I.N. treatment).

<https://doi.org/10.1371/journal.pntd.0006979.g004>

significantly increased the levels of MDC, TSLP, eotaxin, and IL-25 gene expression (Fig 5). However, expression levels of those genes of *Apergillus* protease treated cell were not increased at that time point. These chemokines are known as essential for the initiation and expansion of the Th2 response in lung epithelial cells.

Discussion

In this study, we investigated the ability of Ac-PF to provoke allergic airway inflammation in an animal model. Ac-PF-treated mice showed similar symptoms to asthma, including goblet cell and immune cell infiltration, increased mucin production, and hyperplasia of respiratory epithelial cells, which causes the airway tract to become narrow, leading to increased airway hyperresponsiveness in a methacholine dose-dependent manner.

Acanthamoeba are free-living, amphizoic and opportunistic protozoa that are common in nature [27]. A previous study demonstrated that *Acanthamoeba* trophozoites induced allergic airway inflammation in mice by inducing a Th2 response [28]. These allergic airway inflammation effects were closely related to the protease activity of excretory-secretory proteins (ESP) of *Acanthamoeba* [7]. Several studies showed that protease activity was related to allergens and led to morphologic changes and cytokine production [29]. Kheradmand et al. found that inactivated protease allergen fragments showed no allergenic potency, demonstrating that

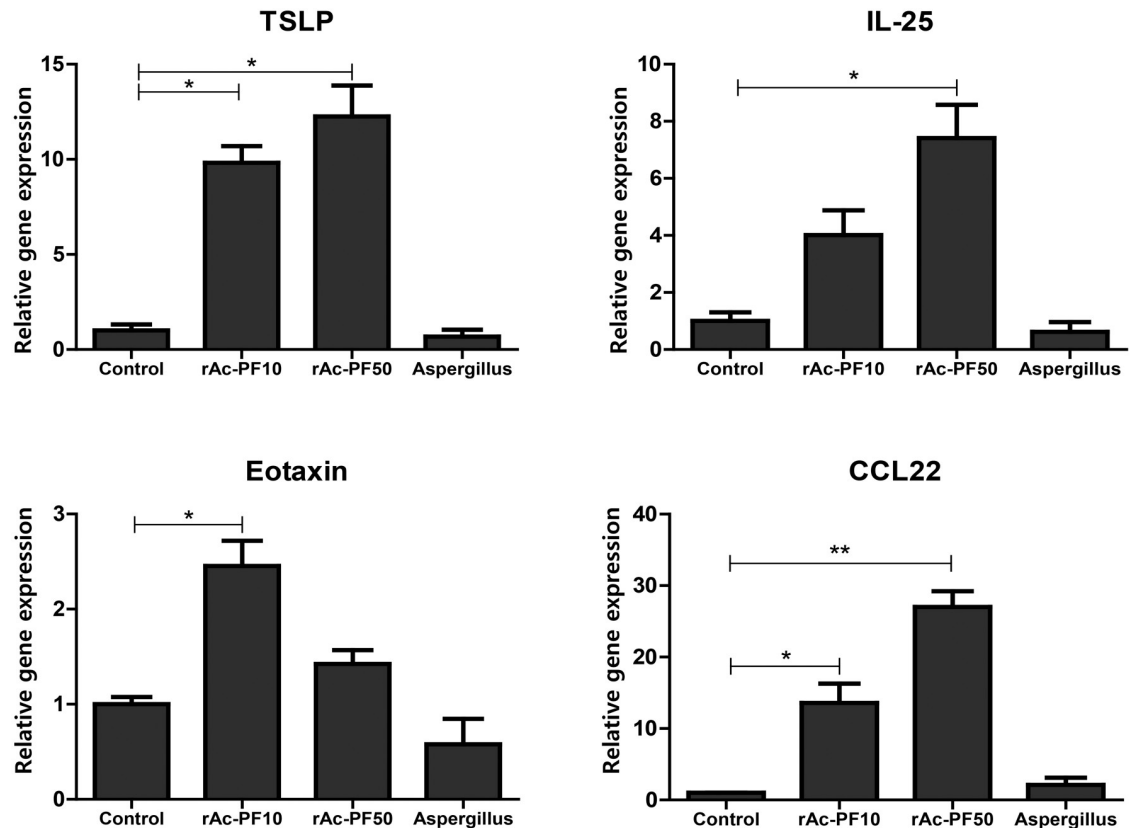


Fig 5. Treatment with rAc-PF elicited Th2-related chemokine gene expression. Th2-related chemokine gene expression levels of TSLP, MDC, eotaxin, and IL-25 were measured in MLE12 cells after incubation with rAc-PF protein and *Aspergillus* proteins for 3 h. Means of *p*-value were measured for comparison to control (Control; PBS treatment, rAc-PF 10; 10 μg rAc-PF treatment, rAc-PF 50; 50 μg rAc-PF treatment, Aspergillus; 10 μg *Aspergillus* protease treatment, **p* < 0.05, ***p* < 0.01, ****p* < 0.001, 3 independent experiments).

<https://doi.org/10.1371/journal.pntd.0006979.g005>

active protease is essential for the allergic effects [30]. However, we found that protease activity was not the only essential factor in the allergic airway inflammation effect of *Acanthamoeba*. Although most effects were significantly reduced after blocking the protease activity of ESP, some allergic symptoms and effects were observed after treatment with boiled ESP [9]. We predicted that protease activity acts as one of the strongest allergic factors, and other allergens may be present in *Acanthamoeba* ESP or their extracts. rAc-PF may be one of the protease activity free allergens, as some agents did not exhibit protease activity, but still exhibited allergic inflammation ability (Fig 1C).

Profilin is intermediate or major allergen in pollen and foods [31, 32]. Carlsson et al. first identified profilin as a profilamentous complex of actin-associated protein essential for the spatial regulation of actin microfilament growth. This is an essential process in cellular movement and cell shape changes [33–35]. It was also proposed that profilin elicits Type I allergic reactions because of the three-dimensional structures of some allergenic profilins [36, 37]. Fedorov et al. reported the allergen cross-reactivity, crystal structure, and IgE-epitope mapping of birch pollen profilin. The epitopes reside in conserved sequences, thus providing an explanation for the cross-reactivity [38]. Park et al. detected IgE antibodies in patients with a positive skin-prick test to pollen who also reacted with *Acanthamoeba* ES proteins and showed positive results in patients positive to *Acanthamoeba* [8]. Although profilin is regarded as an

allergen, its role in allergic symptoms is controversial. Many studies have described sensitization to profilin and cross-reactivity of IgE with this allergen [16, 17, 31, 38–40], but the sensitization and immunological cross-reactivity do not always lead to allergy.

Allergic airway inflammation is induced by allergens through several mechanisms. For example, an allergenic substrate can activate dendritic cells and induce IL-25, TSLP, and allergy-related chemokines [41]. In this study, we found that Th2 chemokine gene expression in mouse lung epithelial cells was significantly increased on 3hr after rAc-PF treatment (Fig 5), and Th2 cytokine expression levels in the BALF, MLN, and spleen were increased by repeated nasal treatment with rAc-PF in mice (Fig 3). In previous studies, *Aspergillus* can elicit Th2 chemokine genes *in vivo* experiments, we also found airway inflammation by *Aspergillus* treatment (Figs 3 and 4). Although the level of chemokine genes related with Th2 in *Aspergillus* proteinase treated mouse lung epithelial cell was not elevated on 3 hrs after treatment in this study, they could elevate the gene expression on more early time [25]. Previous studies revealed that *Acanthamoeba* ESP activated dendritic cells, increasing the differentiation of naïve CD4⁺ T cells into T helper type 2 (Th2) cells [28].

In conclusion, rAc-PF increased the numbers of lymphocytes, eosinophils, and neutrophils in the BALF and levels of Th2 cytokines. Further studies are needed to determine the mechanisms used by Ac-PF to enhance allergic reactions. Additionally, alterations in immunocytes *in vitro* and how Ac-PF influences activation of innate immunity should be examined, which may facilitate diagnosis and the development of new treatments for allergic diseases in the future.

Author Contributions

Conceptualization: Hak Sun Yu.

Data curation: So Myung Song, Shin Ae Kang.

Formal analysis: Shin Ae Kang, Dong Hee Kim, So Young Park, Se Bok Jang.

Funding acquisition: Hak Sun Yu.

Investigation: So Myung Song, Shin Ae Kang.

Methodology: Shin Ae Kang, So Young Park, Se Bok Jang.

Project administration: Hak Sun Yu.

Resources: Hak Sun Yu.

Software: So Myung Song.

Supervision: Hak Sun Yu.

Validation: So Myung Song.

Visualization: Hye Kyung Park, Se Bok Jang.

Writing – original draft: So Myung Song.

Writing – review & editing: Hak Sun Yu.

References

1. Paul WE, Zhu J. (2010) How are TH2-type immune responses initiated and amplified? *Nature Reviews Immunology*. 10:225–35. <https://doi.org/10.1038/nri2735> PMID: 20336151
2. Marsh D, Goodfriend L, King T, Lowenstein H, Platts-Mills T. (1986) Allergen nomenclature. *Bulletin of the World Health Organization*. 64:767. PMID: 3492310

3. Visvesvara GS, Moura H, Schuster FL. (2007) Pathogenic and opportunistic free-living amoebae: *Acanthamoeba* spp., *Balamuthia mandrillaris*, *Naegleria fowleri*, and *Sappinia diploidea*. *FEMS Immunology & Medical Microbiology*. 50:1–26.
4. Khan NA. (2006) *Acanthamoeba*: biology and increasing importance in human health. *FEMS microbiology reviews*. 30:564–95. <https://doi.org/10.1111/j.1574-6976.2006.00023.x> PMID: 16774587
5. Serrano-Luna JdJ, Cervantes-Sandoval I, Calderón J, Navarro-García F, Tsutsumi V, Shibayama M. (2006) Protease activities of *Acanthamoeba polyphaga* and *Acanthamoeba castellanii*. *Canadian journal of microbiology*. 52:16–23. <https://doi.org/10.1139/w05-114> PMID: 16541155
6. Marciano-Cabral F, Cabral G. (2003) *Acanthamoeba* spp. as agents of disease in humans. *Clinical microbiology reviews*. 16:273–307. <https://doi.org/10.1128/CMR.16.2.273-307.2003> PMID: 12692099
7. Park MK, Cho MK, Kang SA, Park HK, Kim DH, Yu HS. (2014) *Acanthamoeba* protease activity promotes allergic airway inflammation via protease-activated receptor 2. *PLoS One*. 9:e92726. <https://doi.org/10.1371/journal.pone.0092726> PMID: 24658532
8. Park HK, Park MK, Kim KU, Kang SA, Park SK, Ahn SC, et al. (2016) Evaluation of allergic sensitivity to *Acanthamoeba* allergen in patients with chronic cough. *Allergy Asthma Proc*. 37:141–7. <https://doi.org/10.2500/aap.2016.37.3922> PMID: 26932171
9. Kaiser DA, Sato M, Ebert RF, Pollard TD. (1986) Purification and characterization of two isoforms of *Acanthamoeba* profilin. *J Cell Biol*. 102:221–6. PMID: 3941153
10. Reichstein E, Korn ED. (1979) *Acanthamoeba* profilin. A protein of low molecular weight from *Acanthamoeba castellanii* that inhibits actin nucleation. *J Biol Chem*. 254:6174–9. PMID: 447705
11. Gunning PW, Ghoshdastider U, Whitaker S, Popp D, Robinson RC. (2015) The evolution of compositionally and functionally distinct actin filaments. *J Cell Sci*. 128:2009–19. <https://doi.org/10.1242/jcs.165563> PMID: 25788699
12. Vinson VK, De La Cruz EM, Higgs HN, Pollard TD. (1998) Interactions of *Acanthamoeba* profilin with actin and nucleotides bound to actin. *Biochemistry*. 37:10871–80. <https://doi.org/10.1021/bi980093l> PMID: 9692980
13. Alvarado M, Jimeno L, De La Torre F, Boissy P, Rivas B, Lázaro M, et al. (2014) Profilin as a severe food allergen in allergic patients overexposed to grass pollen. *Allergy*. 69:1610–6. <https://doi.org/10.1111/all.12509> PMID: 25123397
14. Scheurer S, Wangorsch A, Hausteiner D, Vieths S. (2000) Cloning of the minor allergen Api g 4 profilin from celery (*Apium graveolens*) and its cross-reactivity with birch pollen profilin Bet v 2. *Clinical and experimental Allergy*. 30:962–71. PMID: 10848918
15. Breiteneder H, Pettenburger K, Bito A, Valenta R, Kraft D, Rumpold H, et al. (1989) The gene coding for the major birch pollen allergen Betv1, is highly homologous to a pea disease resistance response gene. *The EMBO journal*. 8:1935. PMID: 2571499
16. Menz G, Dolecek C, SCHÖNHEIT-KENN U, Ferreira F, Moser M, Schneider T, et al. (1996) Serological and skin-test diagnosis of birch pollen allergy with recombinant Bet v I, the major birch pollen allergen. *Clinical & Experimental Allergy*. 26:50–60.
17. Valenta R, Duchene M, Pettenburger K, Sillaber C, Valent P, Bettelheim P, et al. (1991) Identification of profilin as a novel pollen allergen; IgE autoreactivity in sensitized individuals. *Science*. 253:557–60. PMID: 1857985
18. Ebner C, Hirschwehr R, Bauer L, Breiteneder H, Valenta R, Ebner H, et al. (1995) Identification of allergens in fruits and vegetables: IgE cross-reactivities with the important birch pollen allergens Bet v 1 and Bet v 2 (birch profilin). *Journal of Allergy and Clinical Immunology*. 95:962–9. PMID: 7751517
19. Vallier P, Dechamp C, Valenta R, Vial O, Deviller P. (1992) Purification and characterization of an allergen from celery immunochemically related to an allergen present in several other plant species. Identification as a profilin. *Clinical & Experimental Allergy*. 22:774–82.
20. Yu HS, Kong HH, Kim SY, Hahn YH, Hahn TW, Chung DI. (2004) Laboratory investigation of *Acanthamoeba lugdunensis* from patients with keratitis. *Invest Ophthalmol Vis Sci*. 45:1418–26. PMID: 15111597
21. Kang SA, Park MK, Cho MK, Park SK, Jang MS, Yang BG, et al. (2014) Parasitic nematode-induced CD4+Foxp3+ T cells can ameliorate allergic airway inflammation. *PLoS Negl Trop Dis*. 8:e3410. <https://doi.org/10.1371/journal.pntd.0003410> PMID: 25522145
22. Park H-K, Cho MK, Choi SH, Kim YS, Yu HS. (2011) *Trichinella spiralis*: infection reduces airway allergic inflammation in mice. *Experimental parasitology*. 127:539–44. <https://doi.org/10.1016/j.exppara.2010.10.004> PMID: 21044628
23. Yu HS, Park MK, Kang SA, Cho KS, Mun SJ, Roh HJ. (2017) Culture supernatant of adipose stem cells can ameliorate allergic airway inflammation via recruitment of CD4(+)CD25(+)Foxp3 T cells. *Stem cell research & therapy*. 8:8.

24. Dahm PH, Richards JB, Karmouty-Quintana H, Cromar KR, Sur S, Price RE, et al. (2014) Effect of antigen sensitization and challenge on oscillatory mechanics of the lung and pulmonary inflammation in obese carboxypeptidase E-deficient mice. *American journal of physiology Regulatory, integrative and comparative physiology*. 307:R621–33. <https://doi.org/10.1152/ajpregu.00205.2014> PMID: 25009214
25. Yu HS, Angkasekwinai P, Chang SH, Chung Y, Dong C. (2010) Protease allergens induce the expression of IL-25 via Erk and p38 MAPK pathway. *J Korean Med Sci*. 25:829–34. <https://doi.org/10.3346/jkms.2010.25.6.829> PMID: 20514301
26. Ritter M, Goggel R, Chaudhary N, Wiedenmann A, Jung B, Weith A, et al. (2005) Elevated expression of TARC (CCL17) and MDC (CCL22) in models of cigarette smoke-induced pulmonary inflammation. *Biochem Biophys Res Commun*. 334:254–62. <https://doi.org/10.1016/j.bbrc.2005.06.084> PMID: 15993846
27. Martinez AJ, Visvesvara GS. (1997) Free-living, amphizoic and opportunistic amebas. *Brain Pathology*. 7:583–98. PMID: 9034567
28. Park MK, Cho MK, Kang SA, Park H-K, Kim D-H, Yu HS. (2014) *Acanthamoeba* protease activity promotes allergic airway inflammation via protease-activated receptor 2. *PloS one*. 9:e92726. <https://doi.org/10.1371/journal.pone.0092726> PMID: 24658532
29. Kauffman HF, Tomee JC, van de Riet MA, Timmerman AJ, Borger P. (2000) Protease-dependent activation of epithelial cells by fungal allergens leads to morphologic changes and cytokine production. *Journal of Allergy and Clinical Immunology*. 105:1185–93. PMID: 10856154
30. Kheradmand F, Kiss A, Xu J, Lee S-H, Kolattukudy PE, Corry DB. (2002) A protease-activated pathway underlying Th cell type 2 activation and allergic lung disease. *The Journal of Immunology*. 169:5904–11. PMID: 12421974
31. Van Ree R, Voitenko V, Van Leeuwen W, Aalberse R. (1992) Profilin is a cross-reactive allergen in pollen and vegetable foods. *International archives of allergy and immunology*. 98:97–104. <https://doi.org/10.1159/000236171> PMID: 1643445
32. Valenta R, Duchene M, Ebner C, Valent P, Sillaber C, Deviller P, et al. (1992) Profilins constitute a novel family of functional plant pan-allergens. *The Journal of experimental medicine*. 175:377–85. PMID: 1370681
33. Carlsson L, Nyström L-E, Sundkvist I, Markey F, Lindberg U. (1977) Actin polymerizability is influenced by profilin, a low molecular weight protein in non-muscle cells. *Journal of molecular biology*. 115:465–83. PMID: 563468
34. Hartwig JH, Chambers KA, Hopcia KL, Kwiatkowski DJ. (1989) Association of profilin with filament-free regions of human leukocyte and platelet membranes and reversible membrane binding during platelet activation. *The Journal of cell biology*. 109:1571–9. PMID: 2793934
35. Buß F, Temm-Grove C, Henning S, Jockusch BM. (1992) Distribution of profilin in fibroblasts correlates with the presence of highly dynamic actin filaments. *Cell motility and the cytoskeleton*. 22:51–61. <https://doi.org/10.1002/cm.970220106> PMID: 1581979
36. Thorn KS, Christensen HE, Shigeta R, Huddler D, Shalaby L, Lindberg U, et al. (1997) The crystal structure of a major allergen from plants. *Structure*. 5:19–32. PMID: 9016723
37. Derewenda U, Li J, Derewenda Z, Dauter Z, Mueller G, Rule GS, et al. (2002) The crystal structure of a major dust mite allergen Der p 2, and its biological implications. *Journal of molecular biology*. 318:189–97. [https://doi.org/10.1016/S0022-2836\(02\)00027-X](https://doi.org/10.1016/S0022-2836(02)00027-X) PMID: 12054778
38. Fedorov AA, Ball T, Mahoney NM, Valenta R, Almo SC. (1997) The molecular basis for allergen cross-reactivity: crystal structure and IgE-epitope mapping of birch pollen profilin. *Structure*. 5:33–45. PMID: 9016715
39. Pauli G, Oster JP, Deviller P, Heiss S, Bessot JC, Susani M, et al. (1996) Skin testing with recombinant allergens rBet v 1 and birch profilin, rBet v 2: diagnostic value for birch pollen and associated allergies. *Journal of allergy and clinical immunology*. 97:1100–9. PMID: 8626988
40. Heiss S, Valenta R, Mahler V, Steiner R, Spitzauer S, Schweiger C, et al. (1999) Component-resolved diagnosis (CRD) of type I allergy with recombinant grass and tree pollen allergens by skin testing. *Journal of investigative dermatology*. 113:830–7. <https://doi.org/10.1046/j.1523-1747.1999.00796.x> PMID: 10571741
41. Kim HY, DeKruyff RH, Umetsu DT. (2010) The many paths to asthma: phenotype shaped by innate and adaptive immunity. *Nature immunology*. 11:577–84. <https://doi.org/10.1038/ni.1892> PMID: 20562844