

Sensitivity of Volume-regulated Anion Current to Cholesterol Structural Analogues

VICTOR G. ROMANENKO,¹ GEORGE H. ROTHBLAT,² and IRENA LEVITAN¹

¹Department of Pathology and Laboratory Medicine, Institute for Medicine and Engineering, University of Pennsylvania, Philadelphia, PA 19104

²Department of Pediatrics, The Children's Hospital of Philadelphia, Philadelphia, PA 19104

ABSTRACT Depletion of membrane cholesterol and substitution of endogenous cholesterol with its structural analogues was used to analyze the mechanism by which cholesterol regulates volume-regulated anion current (VRAC) in endothelial cells. Depletion of membrane cholesterol enhanced the development of VRAC activated in a swelling-independent way by dialyzing the cells either with GTP γ S or with low ionic strength solution. Using M β CD-sterol complexes, 50–80% of endogenous cholesterol was substituted with a specific analogue, as verified by gas-liquid chromatography. The effects of cholesterol depletion were reversed by the substitution of endogenous cholesterol with its chiral analogue, epicholesterol, or with a plant sterol, β -sitosterol, two analogues that mimic the effect of cholesterol on the physical properties of the membrane bilayer. Alternatively, when cholesterol was substituted with coprostanol that has only minimal effect on the membrane physical properties it resulted in VRAC enhancement, similar to cholesterol depletion. In summary, our data show that these channels do not discriminate between the two chiral analogues of cholesterol, as well as between the two cholesterol and β -sitosterol, but discriminate between cholesterol and coprostanol. These observations suggest that endothelial VRAC is regulated by the physical properties of the membrane.

KEY WORDS: Cl⁻ channels • cholesterol analogues • physical properties of the membrane • cell swelling • vascular endothelial cells

INTRODUCTION

Changes in the level of cellular cholesterol are known to affect numerous membrane proteins, including several types of ion channels (e.g., Bolotina et al., 1989; Barrantes, 1993; Chang et al., 1995; Lundbaek et al., 1996; Romanenko et al., 2002b). Two general mechanisms have been proposed for the regulation of membrane proteins by cholesterol: (a) changing the physical properties of the membrane or (b) direct binding between cholesterol and the proteins (for reviews see Barrantes, 1993; Bastiaanse et al., 1997; Burger et al., 2000). The basis for the first mechanism is a well-known observation that an increase in membrane cholesterol restricts the motion of phospholipids, resulting in lipid ordering (e.g., Demel et al., 1972; Stockton and Smith, 1976), decrease in membrane fluidity (e.g., Brulet and McConnell, 1976; Cooper, 1978; Xu and London, 2000), and increase in membrane stiffness (Evans and Needham, 1987; Needham and Nunn, 1990). The latter was proposed to increase membrane deformation energy altering the energetic cost of the transitions between the conformational states of the ion channels

(Lundbaek et al., 1996). This hypothesis is supported by the studies showing that in model membranes, increase in spontaneous monolayer curvature and thickness of the membrane bilayer, factors that are among the determinants of the membrane deformation energy (Huang, 1986; Nielsen et al., 1998), affect open probability of antibiotic ion channels, gramicidin (Lundbaek et al., 1997), and alamethicin (Keller et al., 1993), and of bacterial mechanosensitive MscL channels (Perozo et al., 2002). There is little evidence, however, for the regulation of mammalian anion channels by cholesterol-induced changes in the physical properties of the membrane bilayer in living cells.

We focus on endothelial volume-regulated Cl⁻ current, a key process in cell volume homeostasis (for review see Nilius et al., 1996) that is also implicated in the regulation of cell cycle (Shen et al., 2000), cell proliferation (Manolopoulos et al., 1997; Voets et al., 1997), and angiogenesis (Manolopoulos et al., 2000). In addition, more recent studies show that VRAC is sensitive to mechanical fluid shear stress (Barakat et al., 1999; Romanenko et al., 2002a), suggesting that it may contrib-

Address correspondence to Irena Levitan, Department of Pathology and Laboratory Medicine, Institute for Medicine and Engineering, 3340 Smith Walk Philadelphia, PA 19104. Fax: (215) 573-7227; email: ilevitan@mail.med.upenn.edu

Abbreviations used in this paper: BAEC, bovine aortic endothelial cell; GTP γ S, guanosine 5'-O-(3-thiotriphosphate); M β CD, methyl- β -cyclodextrin; VRAC, volume-regulated anion current; F_i , intracellular ionic strength.

ute to shear stress-induced regulation of the endothelium. Our earlier study has shown that VRAC is inversely dependent on the level of cellular cholesterol (Levitan et al., 2000). The first goal of this study is to determine whether the effect of cholesterol on VRAC may be accounted for by altering the mechanical constraint to cell swelling that is due to cytoskeleton. This possibility has to be considered because cholesterol depletion has been shown to release several cytoskeletal proteins, such as actin, α -actinin, and ezrin, from the cellular membrane fractions (Harder et al., 1997), suggesting that it may uncouple the membrane from the underlying cytoskeleton and, consequently, decrease cell stiffness and allow cells to swell more. In this study, however, we show that cholesterol depletion enhances VRAC in a swelling-independent way.

The second question addressed in this study is whether the sensitivity of VRAC to cholesterol is due to cholesterol-induced changes in the physical properties of the membrane bilayer or due to specific sterol-protein interactions defined as direct binding between cholesterol and the channel protein or a modulatory protein. Development of β -cyclodextrin-cholesterol donor/acceptor system that allows precise adjustment of the level of cellular cholesterol to different levels (Christian et al., 1997) and the substitution of cholesterol with its structural analogues (Gimpl et al., 1997) has provided strong tools to discriminate between the specific and nonspecific effects of cholesterol. In our recent study, we have shown that this method can be used to substitute $\sim 50\%$ of endogenous cholesterol with its chiral isomer epicholesterol in intact vascular endothelial cells without apparent cell damage (Romanenko et al., 2002b). Here, we extend this approach to demonstrate a strong correlation between the effects of cholesterol structural analogues on VRAC and their known effects on the physical properties of the membrane lipid bilayer providing the first evidence that VRAC is regulated by membrane physical properties.

MATERIALS AND METHODS

Modulation of Cellular Cholesterol Level and Substitution of Cholesterol with Sterol Analogues

Bovine aortic endothelial cells (BAECs) between passages 10 and 30 were grown in DMEM (Cell Grow) supplemented with 10% FBS (GIBCO BRL). BAECs were enriched with or depleted of cholesterol by incubating them with methyl- β -cyclodextrin (M β CD) saturated with cholesterol or with empty M β CD (not complexed with cholesterol), as described previously (Levitan et al., 2000). Briefly, a small volume of cholesterol stock solution in chloroform:methanol (1:1, vol:vol) was added to a glass tube and the solvent was evaporated. Then, 2.5 or 5 mM M β CD solution in DMEM medium without serum was added to the dried cholesterol. The tube was vortexed, sonicated, and incubated overnight in a shaking bath at 37°C. M β CD was saturated with cholesterol at an M β CD:cholesterol molar ratio of 8:1, the saturation limit of

TABLE I
Levels of Sterols in BAECs Treated with M β CD and M β CD-cholesterol Complexes

Conditions	Cholesterol, $\mu\text{g}/\text{mg}$ protein
5 mM M β CD, 2 h	7.45 \pm 0.45
2.5 mM M β CD, 1 h	14.91 \pm 0.96
Control	22.62 \pm 2.02
2.5 mM M β CD-cholesterol, 1 h	31.92 \pm 2.16
5 mM M β CD-cholesterol, 2 h	46.44 \pm 1.46

Cholesterol levels in BAECs exposed to M β CD and M β CD-cholesterol complexes for indicated periods and in control cells measured by GLC ($n = 8-12$).

M β CD (Christian et al., 1997). In preparation for an experiment, cells were washed three times with serum-free DMEM to remove the serum from the growth medium. Cells were then incubated with M β CD saturated solution or with M β CD solution containing no cholesterol (empty M β CD) for 60 or 120 min. During the incubation, cells were maintained in a humidified CO₂ incubator at 37°C. Control cells were treated similarly and incubated with serum-free DMEM solution without any M β CD. After exposure to M β CD, cells were washed three times with serum-free medium and returned to the incubator. After treatment, cells were kept in serum-free medium and were found to maintain the elevated or the decreased level of cholesterol for at least 48 h, providing the time window for the electrophysiological recordings (Table I). Analogous procedure was used for substitution of membrane cholesterol with epicholesterol, β -sitosterol, and coprostanol using respective analogue instead of cholesterol for preparation of M β CD-sterol complex. M β CD and sterols were purchased from Sigma-Aldrich or Steraloids.

Measurement of Cellular Sterols

Quantitative analysis of membrane cholesterol and epicholesterol was done as described previously (Romanenko et al., 2002b). Briefly, total lipid was extracted from the cell monolayers using isopropanol with addition of known amount of cholesteryl methyl ether (CME) as an internal standard. The extracts were dried in the flow of N₂ at 35°C, reextracted with chloroform:methanol:water system (Bligh and Dyer, 1959), dissolved in CS₂, and analyzed by gas-liquid chromatography (GLC) as described previously (Ishikawa et al., 1974; Klansek et al., 1995). Cell protein was determined on the lipid-extracted monolayer using a modification (Markwell et al., 1978) of the method of Lowry (Lowry et al., 1951). All mass values were normalized on the basis of cell protein. Quantifications of membrane β -sitosterol and coprostanol were performed using the same procedure.

Electrophysiological Recording

Ionic currents were measured using the whole-cell and outside-out excised patch configurations (Hamill et al., 1981). Pipettes were pulled (SG10 glass; Richland Glass) to give a final resistance of 2-6 M Ω . A saturated salt agar bridge was used as the reference electrode. Currents were recorded using an EPC9 amplifier (HEKA Elektronik) and accompanying acquisition and analysis software (Pulse & PulseFit; HEKA Elektronik). Whole-cell capacitance and series resistance were compensated and monitored throughout the recording. Whole-cell currents were elicited by 500-ms linear voltage ramps from -60 to +60 mV with an interpulse interval of 5 s. The holding potential between the ramps was -60 mV. Excised patches were pulled from the cells after full VRAC development and single channel current was recorded using a voltage-step pro-

tolocol, as described previously by (Jackson and Strange, 1995). Single-channel recordings were done with a 50- μ s sampling interval and filtered at 500 Hz. The external recording solution contained (in mM): 150 NaCl, 1 EGTA, 2 CaCl₂, 10 HEPES, pH 7.3. The basic internal solution contained (in mM): 120 or 140 Cs-Glutamate, 10 HEPES, 4 ATP, pH 7.3 (CsOH), with free [Ca²⁺] ~10 nM (0.1 CaCl₂, 1.1 EGTA). VRAC was activated by either supplementing the internal solution with 100 μ M GTP γ S or by lowering the concentration of Cs-Glutamate to 90 mM. The osmolarities of all solutions were determined immediately before recording with a vapor pressure osmometer (Wescor, Inc.) and were adjusted by the addition of sucrose, as required. All chemicals for the recording solutions were obtained from Fisher Scientific or Sigma-Aldrich. Only cells that retained normal morphology after the M β CD treatments were taken for the analysis.

Analysis

Ionic strength (Γ_i) was calculated as: $\Gamma_i = 1/2 \sum m_i z_i^2$, half the sum of the molalities of each ion in the solution (m_i) multiplied by the square of its charge (z_i) (Moore, 1972). It was approximated that zwitterions of HEPES and glutamate contribute to ionic strength of the solutions as monoanionic acids with pKa 7.6 and 4.3, respectively. 120 Cs-Glutamate, 10 HEPES, 0.1 CaCl₂, 1.1 EGTA, 4 ATP, pH 7.3 (CsOH) has ionic strength 0.133 (ρ was 1.039 \pm 0.002 kg/l). Analogous solutions with 90 or 140 mM Cs-Glutamate have ionic strengths of 0.104 and 0.153, respectively (ρ were 1.041 \pm 0.004 kg/l and 1.036 \pm 0.002 kg/l, respectively). The calculations were performed using WINMAX v2.40 software (Bers et al., 1994).

Activation rates of VRAC were calculated as maximal slopes of the linear regression of the time-courses of the current increase normalized by the peak amplitude of the current and maximal current densities were calculated by normalizing peak VRAC currents by the cell capacitance. Analysis of the single-channel properties was performed using TAC software (Bruxton). Statistical analysis of the data was performed using a standard two-sample Student's *t* test and was considered significant if two-tailed *P* values were <0.05. All values are presented as means \pm SE.

RESULTS

Cholesterol Depletion Enhances VRAC in the Absence of Osmotic Stress

Two strategies were employed in this study to activate VRAC in the absence of osmotic stress: (a) dialyzing the cells with guanosine 5'-*O*-(3-thiotriphosphate) (GTP γ S) (Doroshenko et al., 1991; Nilius et al., 1999; Estevez et al., 2001), and (b) a decrease in the intracellular ionic strength (Γ_i) (Nilius et al., 1998; Voets et al., 1999; Sabirov et al., 2000). To test the sensitivity of GTP γ S-induced and Γ_i -induced VRAC to the level of cellular cholesterol, the cells were exposed to "empty" M β CD for 2 h resulting in removal of ~70% of cellular cholesterol (Fig. 1 A). Intracellular dialysis of the cells with GTP γ S (100 μ M) induced transient development of VRAC (Fig. 1 B), consistent with the earlier studies (Doroshenko et al., 1991; Nilius et al., 1999; Estevez et al., 2001). Depletion of cellular cholesterol resulted in a significant increase in current density (Fig. 1, B and C), indicating that the effect of cholesterol can occur in the absence of cell swelling and it cannot be accounted for

by an increase in cell swelling. The rate of current activation was not affected by cholesterol depletion.

To test whether the observed effect may be due to the effect of cholesterol depletion on the unitary conductance of VRAC channels, single-channel events were recorded in excised outside-out configurations after the current has developed (Fig. 1 D). After the excision, single-channel events can be observed under strong depolarization that induces channel closing. In most cases, when the channels close they stay closed for a prolonged period of time (Fig. 1 D, a), but in some cases the channels may flicker between the open and closed states for a short period of time before they close completely (Fig. 1 D, b). The amplitudes of the single-channel events were indistinguishable in cells depleted of cholesterol and in control cells (Fig. 1 E).

In our previous study we have shown that swelling-activated VRAC becomes insensitive to changes in the membrane cholesterol level when activated by strong osmotic gradient, indicating the maximal number of swelling-activated channels is not altered by changes in the membrane cholesterol (Levitan et al., 2000). Here we also tested whether the effect of cholesterol depletion on GTP γ S-induced VRAC is different at low and at saturating levels of GTP γ S. VRAC currents were recorded in BAECs dialyzed with increasing concentration of GTP γ S (Fig. 2 A). The figure shows that at 50–100 μ M GTP γ S VRAC reached an apparent maximum. To confirm that at 100 μ M GTP γ S the current indeed reaches the maximal value, average maximal current densities were compared at 100 μ M and 2 mM GTP γ S concentrations when recorded the same day and were found virtually indistinguishable (*P* = 0.96, *n* = 13–15). Fig. 2 B shows that the effect of cholesterol depletion on VRAC activated at low GTP γ S concentration is similar to that at saturating GTP γ S concentration.

Similarly to GTP γ S-activated VRAC, cholesterol depletion significantly enhanced VRAC development when the current was activated by decreasing the intracellular ionic strength (Fig. 3 A and B). The intracellular ionic strength was reduced by dialyzing the cells with low salt solution (Γ_i = 104 mM) where the solution was adjusted with sucrose to maintain normal osmolarity (310 mOsM). Furthermore, cholesterol depletion alone was sufficient to induce spontaneous VRAC activity (Fig. 3, C and D). When dialyzed with isosmotic intracellular solution with Γ_i = 153 mM, control cells develop only a low-amplitude, nonselective cation current and virtually no VRAC (Levitan and Garber, 1998). In contrast, cells depleted of cholesterol show clear VRAC development (Fig. 3 C) with the maximal current density in cholesterol depleted cells being ~4 times higher than the baseline current density (Fig. 3 D).

To analyze further the quantitative relationship between GTP γ S-induced and low Γ_i -induced VRAC and

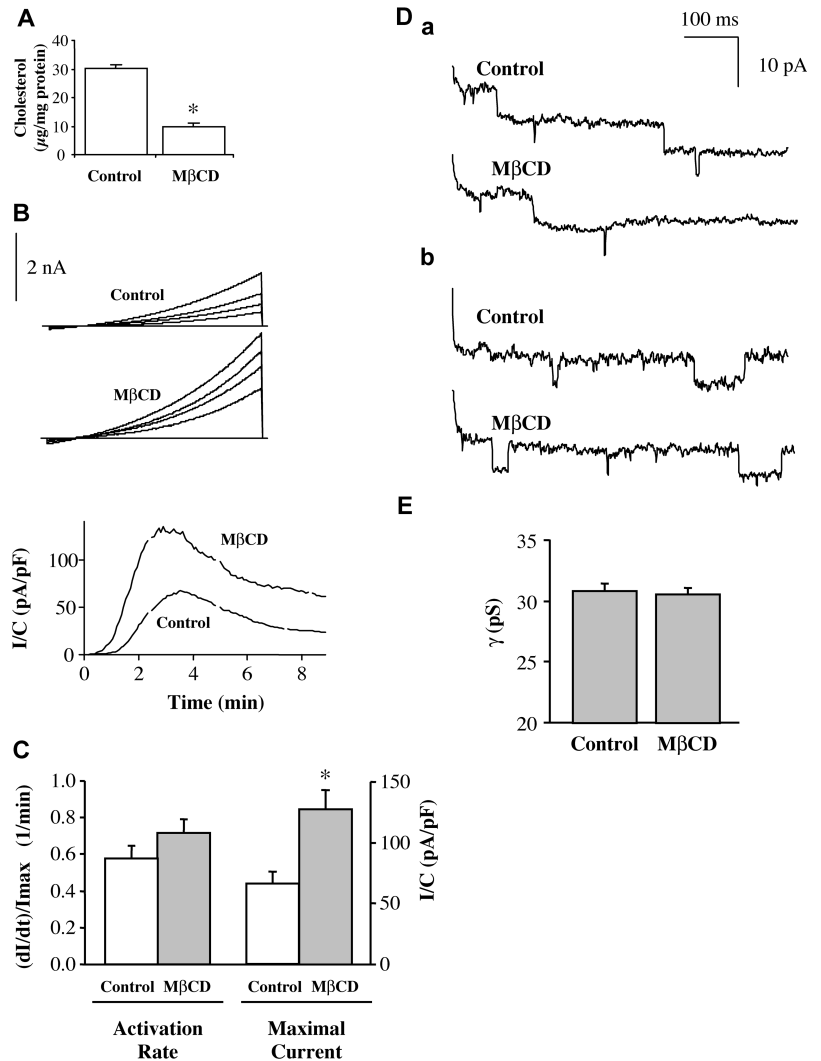


FIGURE 1. Effect of cholesterol depletion on whole-cell and single-channel VRAC induced by GTP γ S. (A) Cholesterol levels in BAECs exposed to 5 mM M β CD and in control cells measured by GLC ($n = 8$ –12; * $P < 0.01$). (B) Typical families of current traces recorded from individual cells dialyzed with 100 μ M GTP γ S elicited by application of linear voltage ramps. (C) The time-courses of VRAC current densities that developed in the same cells calculated by normalizing the maximal current amplitudes (+60 mV) of each individual ramp by the cell capacitance. (D) Single-channel currents recorded in the outside-out excised patch configuration after a depolarization step from -60 to $+140$ mV. Examples of recordings when the channels were closing for a prolonged period of time (a) and the channels that flickered between the open and closed states (b). (E) Unitary conductances of the channels recorded in the membranes of the cells depleted of cholesterol and control cells.

cellular cholesterol, the level of cellular cholesterol was titrated by exposing the cells to either 2.5 or 5 mM M β CD or M β CD–cholesterol complex. The level of free cholesterol was measured for every experimental condition and, as expected, the efficiency of cholesterol depletion/enrichment was proportional to M β CD concentration. Fig. 4 shows maximal current densities of GTP γ S-induced and low Γ_i -induced VRAC plotted as a function of free cellular cholesterol. The functional dependence of both GTP γ S-induced and low Γ_i -induced VRAC current densities on cellular-free cholesterol was fitted with a single exponential (correlation coefficients of 0.99 for both GTP γ S-induced and for low Γ_i -induced VRAC). While it is remarkable that the quantitative dependences of GTP γ S-induced and Γ_i -induced VRAC on the level of cellular cholesterol are virtually identical, they differ from the cholesterol dependence of swelling-induced VRAC. The main difference is that swelling-induced VRAC was sensitive to high levels of cholesterol (Levitan et al., 2000). These observations suggest that cholesterol may affect VRAC devel-

opment by more than one mechanism and while GTP γ S- and Γ_i -induced VRAC retains its sensitivity to the low levels of cholesterol, it loses the component that is sensitive to the high level of cellular cholesterol.

VRAC Development Is Not Sensitive to the Substitution of Cholesterol by Epicholesterol

As described in our previous study (Romanenko et al., 2002b), exposing the cells to 2.5 mM M β CD saturated with epicholesterol resulted in removal of $\sim 50\%$ of endogenous cholesterol, which was substituted with the similar amount of epicholesterol during the same exposure (Fig. 5 A). The effect of cholesterol/epicholesterol substitution on VRAC development was tested for both GTP γ S-induced and low Γ_i -induced currents (Fig. 5, B and D, respectively). Our observations show that substitution of 50% of endogenous cholesterol with epicholesterol had no significant effect on either GTP γ S-induced or low Γ_i -induced VRAC, indicating that the channels are insensitive to the chirality of the cholesterol isomer in the membrane (Fig. 5, C and D). In-

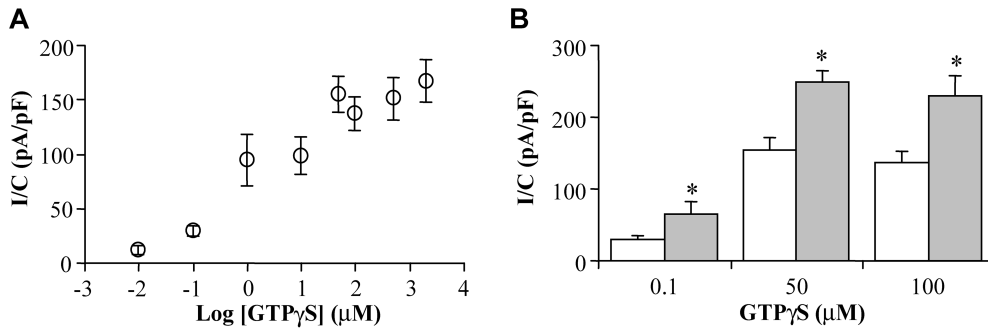


FIGURE 2. Effect of cholesterol depletion is conserved when VRAC is induced by various concentrations of GTP γ S. (A) Peak current densities of VRAC were measured in control cells ($n = 5-13$). (B) The mean peak current densities of VRAC in cells treated with M β CD or control cells ($n = 5-13$).

deed, when VRAC activity in M β CD-epicholesterol-treated cells was plotted as a function of total cellular sterol level it fell exactly on the same exponential curve that was obtained by titrating the levels of cellular cholesterol (Fig. 9). The equivalent result was observed when cells, depleted of cholesterol by exposing them to empty M β CD, were reloaded with epicholesterol by exposing them to M β CD complexed with epicholesterol. After the reloading, VRAC current density returned to the control level. Since the sensitivities of GTP γ S- and Γ_i -induced VRAC to both cholesterol depletion and to the substitution of cholesterol with epicholesterol appear to be very similar, the rest of the substitution experiments were performed only for GTP γ S-induced VRAC.

Substitution of Endogenous Cholesterol with β -sitosterol has a Small Effect on VRAC Activity

To verify further that VRAC activity is regulated by the physical properties of the membrane bilayer but not by specific cholesterol-protein interactions, we have substituted endogenous cholesterol with a plant sterol, β -sitosterol that, similarly to the two chiral forms of cholesterol, decreases membrane fluidity (Gimpl et al., 1997) and induces formation of the structural lipid domains (Xu and London, 2000). As with cholesterol/epicholesterol substitution, we have optimized the conditions of the exposure so that $\sim 50\%$ of endogenous cholesterol was substituted with the appropriate amount of β -sitos-

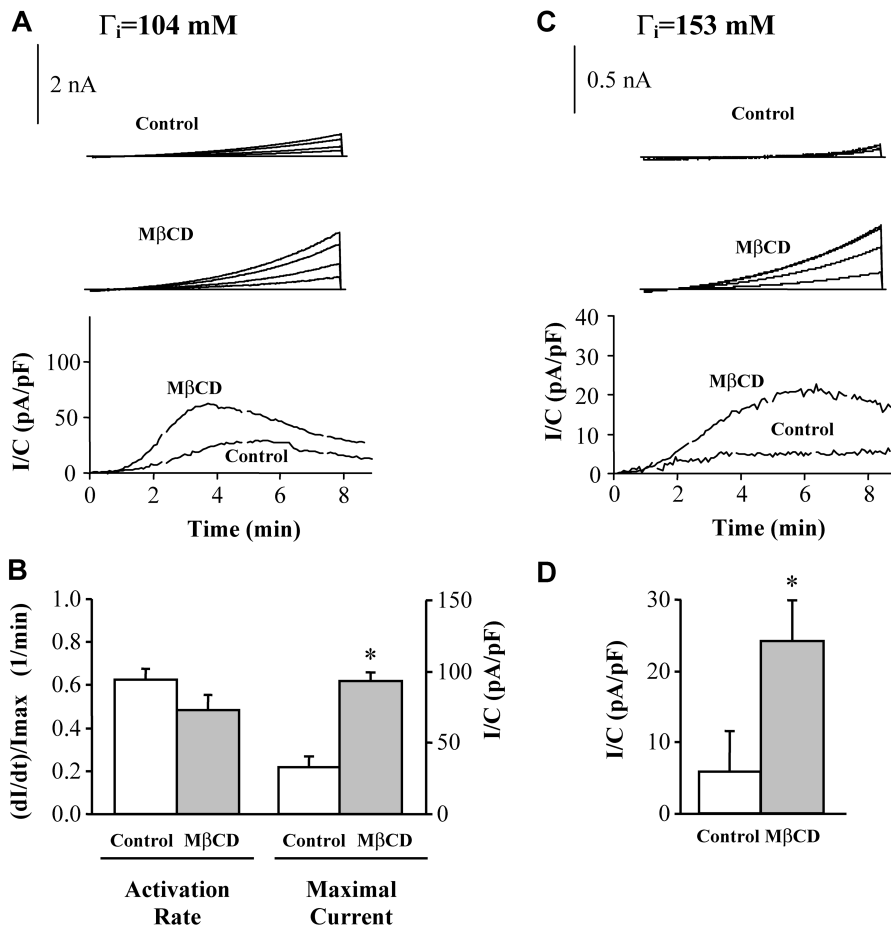


FIGURE 3. Cholesterol depletion up-regulates low Γ_i -induced VRAC and induces VRAC activation at high Γ_i . (A and C) Typical families of current traces and time courses recorded in cholesterol-depleted and control cells dialyzed with solution with either $\Gamma_i = 104$ mM (A) $\Gamma_i = 153$ mM (C). (B and D) The activation rates and the mean peak current densities in cells dialyzed with either low or high Γ_i solutions, respectively ($n = 3-10$).

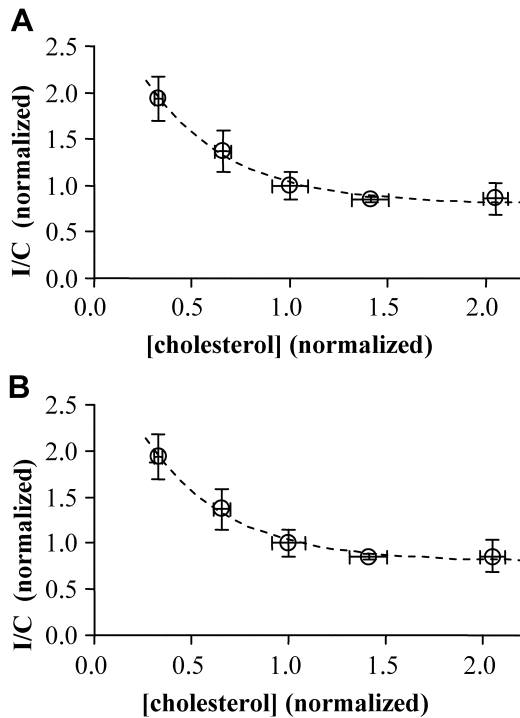


FIGURE 4. Functional dependence of GTP γ S-induced (A) and low Γ_i -induced (B) VRAC on the level of cellular cholesterol. Peak current densities were measured in cells treated with 5 mM or 2.5 mM M β CD or M β CD saturated with cholesterol. The curves were fit to a single exponent with correlation coefficients of 0.99 ($n = 8-15$).

terol. We have found, however, that cholesterol/ β -sitosterol substitution invariably resulted in some decrease in the total sterol level. Typically the level of total sterol was decreased by $\sim 20\%$ (Fig. 6 A). The reason for this partial depletion effect is probably based on the relative affinities of M β CD and of the membrane to the particular sterol. The level of VRAC current density in β -sitosterol-treated cells was slightly but not significantly higher than in control cells (Fig. 6, B and C). This increase, however, is accounted for by the decrease in the total sterol level in these cells, which is apparent from plotting VRAC current density as a function of the total sterol level for different experimental conditions (Fig. 9).

Effect of Cholesterol/coprostanol Substitution Is Similar to that of Cholesterol Depletion

Finally, we have substituted endogenous cholesterol with coprostanol that, in contrast to cholesterol, has only minimal effect on fluidity of the membrane (Gimpl et al., 1997; Xu and London, 2000). Coprostanol partitioned easily into the membrane resulting in 70% cholesterol/coprostanol substitution with no change in total sterol level (Fig. 7 A). Under these experimental conditions, VRAC activity was strongly facilitated (Fig. 7, B and C) and was almost identical to the current in cholesterol-depleted cells (Fig. 9).

Substitution of Endogenous Cholesterol with its Analogues has No Effect on VRAC Unitary Conductance

Similarly to cholesterol depletion, we tested whether partial substitution of cellular cholesterol with epicholesterol, β -sitosterol, or coprostanol affects the unitary conductance of VRAC channels (Fig. 8). We have found that the amplitudes of the single-channel events were indistinguishable in cells at all four conditions.

Dependence of VRAC on Total Sterol Level Versus Cholesterol Alone

Fig. 9 summarizes the findings of this study by showing maximal VRAC amplitudes in different substitution experiments as a function of total cellular sterol (Fig. 9 A) or as a function of cholesterol alone (Fig. 9 B). The figure shows that when cholesterol is substituted with epicholesterol or with β -sitosterol, VRAC current density is identical to the value predicted from the VRAC/total sterol curve but when cholesterol is substituted with coprostanol the level of VRAC current density is significantly higher than that predicted by the VRAC/total sterol curve. In contrast, if VRAC is plotted as a function of cholesterol alone, the picture reverses. When cholesterol is substituted with coprostanol, VRAC current density is identical to the value predicted by the VRAC/cholesterol curve, whereas when cholesterol is substituted with epicholesterol or β -sitosterol, it falls significantly lower than the predicted value. These observations lead to the conclusion that VRAC is regulated by the physical properties of the membrane bilayer and not by specific sterol-protein interactions.

DISCUSSION

The role of cholesterol in regulation of VRAC development was studied by analyzing the sensitivity of VRAC to changes in the cellular level of cholesterol and to substitution of endogenous cholesterol with its structural analogues. The main findings of this study are: (a) cholesterol depletion enhances VRAC activity in a swelling-independent way, (b) VRAC unitary conductance is not affected by changes in the membrane sterol composition, and (c) VRAC is insensitive to the substitution of cholesterol with the sterols whose effects on membrane fluidity were shown to be similar to that of cholesterol, but is strongly affected by the substitution of cholesterol with a sterol whose effect on membrane fluidity is similar to that of cholesterol depletion.

The fundamental question for understanding the mechanisms by which cholesterol affects the function of membrane proteins is whether cholesterol regulates protein function by specific sterol-protein interactions (direct binding to the protein of interest or to a modulatory protein) or by changing the physical properties of the lipid environment. Three experimental approaches are

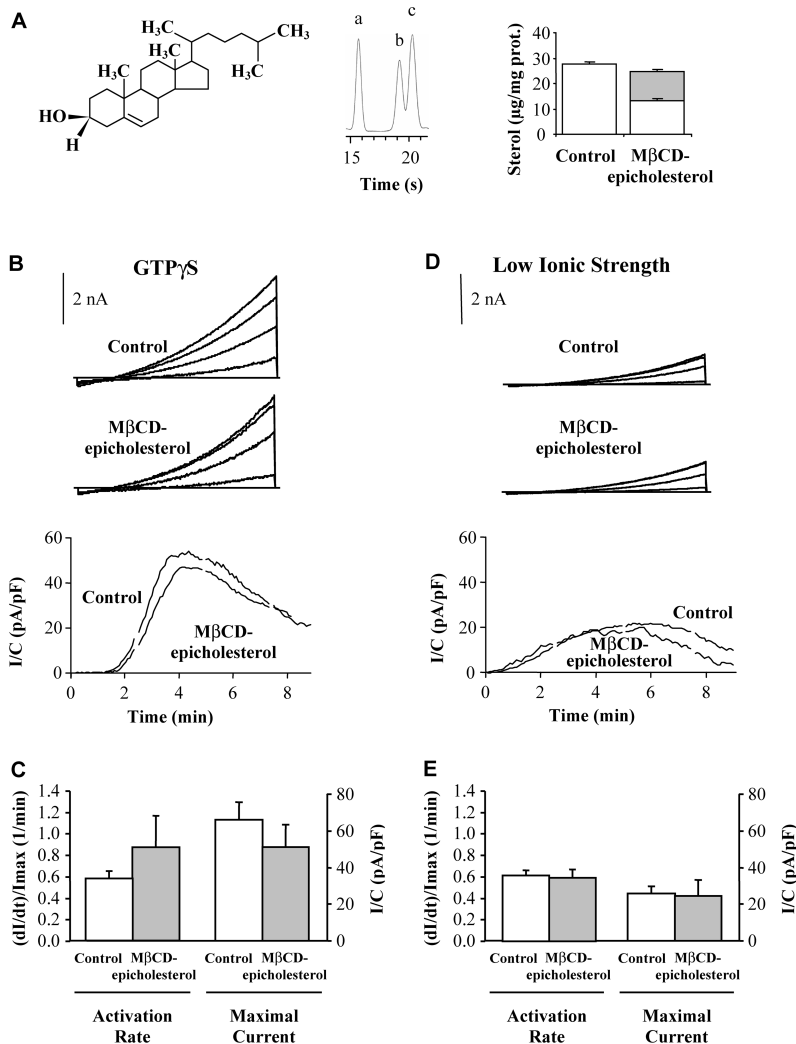


FIGURE 5. Substitution of cholesterol with epicholesterol has no effect on GTP γ S- and low Γ_i -induced VRAC. (A) Structure of epicholesterol (note α conformation of 3-OH group), GLC profile of the lipid extract of epicholesterol-treated cells [the peaks are of internal standard (CME) (a), epicholesterol (b) and cholesterol (c)], and the concentrations of cholesterol (lighter portion of the bar) and epicholesterol (darker portion) measured in cells treated with 2.5 mM M β CD saturated with epicholesterol and in control cells ($n = 8-9$). (B and D) Typical families of current traces and VRAC time courses in cells treated with 2.5 mM M β CD saturated with epicholesterol and in a control cell recorded upon activation of VRAC with GTP γ S (B) and low Γ_i (D). (C and E) The activation rates and the peak current densities in cells exposed to M β CD-epicholesterol and in control cells for both in GTP γ S- and Γ_i -induced VRAC ($n = 6-52$).

commonly used to test the effect of cholesterol on membrane proteins in living cells. The first approach is depleting the cells of or enriching them with cholesterol by exposing the cells to cyclodextrins, water-soluble cyclic carbohydrates with high specificity for cholesterol (e.g., Klein et al., 1995; Christian et al., 1997; Gimpl et al., 1997). As expected, cholesterol removal increases membrane fluidity (Gimpl et al., 1997) and decreases lipid ordering (Gidwani et al., 2001) but altering the level of cholesterol alone cannot discriminate between the two mechanisms because both the amount of cholesterol and the physical properties of the membrane are altered at the same time. Another approach is to sequester cholesterol with a polyene antibiotic filipin (e.g., (Gimpl et al., 1997; Scanlon et al., 2001; Mitter et al., 2003)). This treatment, however, decreases the local concentration of cholesterol and, therefore, bears the same limitations as cholesterol depletion. Finally, membrane cholesterol can be modified by its enzymatic degradation with cholesterol oxidase (e.g., Gimpl et al., 1997; Pang et al., 1999; Scanlon et al., 2001). This method has the advan-

tage of preserving membrane fluidity (Gimpl et al., 1997); however, it tests only the impact of one specific modification of cholesterol structure. In this study, we use an alternative approach of quantitative substitution of endogenous cholesterol by its structural analogues. This approach is based on application of cyclodextrin that was first used to titrate cellular cholesterol to different levels (Klein et al., 1995; Christian et al., 1997) and then developed further to introduce various sterols into membrane vesicles (Gimpl et al., 1997).

In this study, we substitute endogenous cellular cholesterol with three of its structural analogues: the cholesterol synthetic chiral analogue epicholesterol, the plant sterol β -sitosterol, and coprostanol. Comparing effects of cholesterol and epicholesterol is the most commonly used method to discriminate between specific and nonspecific effects of cholesterol on protein function (Mickus et al., 1992; Gimpl et al., 1997; Sookware and Simmonds, 2001). Indeed, cholesterol and epicholesterol are known to reside at significantly different angles in the membrane (Murari et al., 1986)

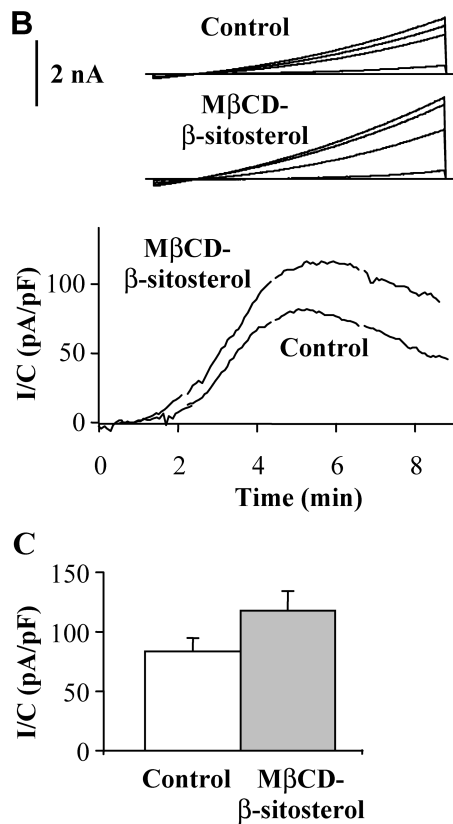
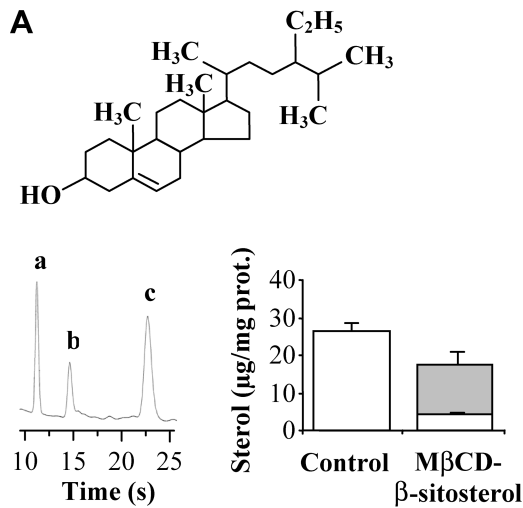


FIGURE 6. Substitution of cholesterol with β -sitosterol has no significant effect on GTP γ S-induced VRAC. (A) Structure of β -sitosterol (note the additional ethyl group at position 24), GLC profile of the lipid extract of β -sitosterol-treated cells [(a) CME, (b) cholesterol, and (c) β -sitosterol], and the concentrations of cholesterol (lighter portion of the bar) and of β -sitosterol (darker portion) measured in cells treated with 5 mM M β CD saturated with β -sitosterol and in control cells ($n = 6$). (B) Typical families of current traces and the time-courses of GTP γ S-induced VRAC recorded in a β -sitosterol-treated cell and in control cell. (C) The peak current densities in treated cells were not significantly different than in control cells ($n = 13$ –21).

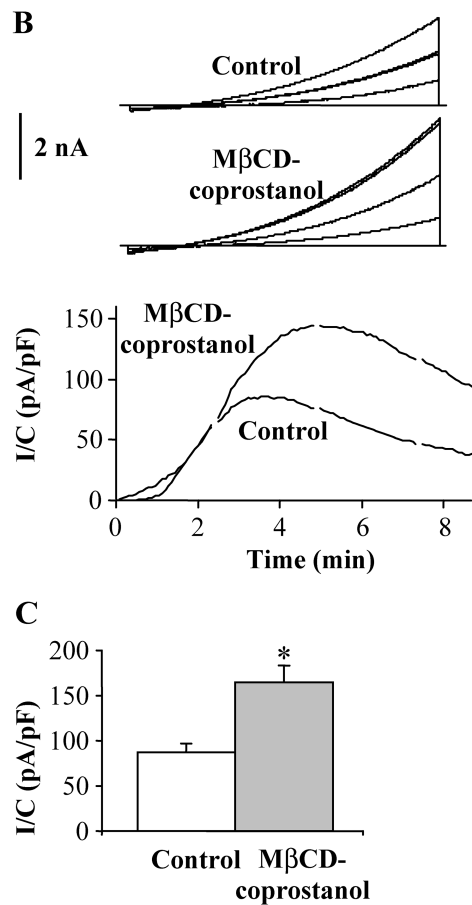
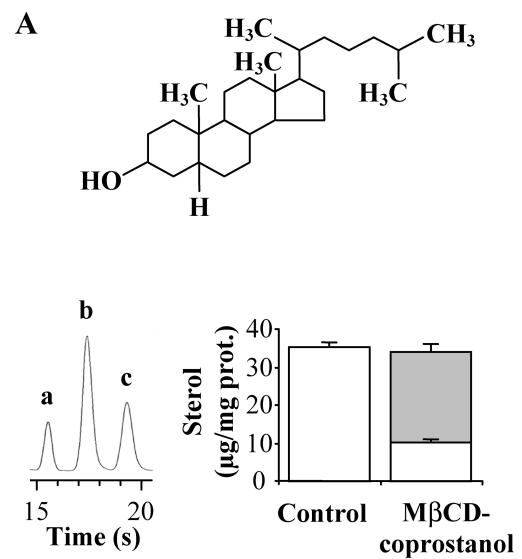


FIGURE 7. Substitution of cholesterol with coprostanol significantly enhances GTP γ S-induced VRAC. (A) Structure of coprostanol (note the reduced Δ^5 double bond), GLC profile of the lipid extract of 1 mM M β CD-coprostanol treated cells [(a) CME, (b) coprostanol, and (c) cholesterol], and the concentrations of the sterols cholesterol (lighter portion of the bar) and coprostanol (darker portion) ($n = 3$). (B) Typical families of current traces and VRAC time-courses of GTP γ S-induced VRAC in a coprostanol-treated cell and in a control cell. (C) The peak current densities ($n = 21$ –23; * $P < 0.01$).

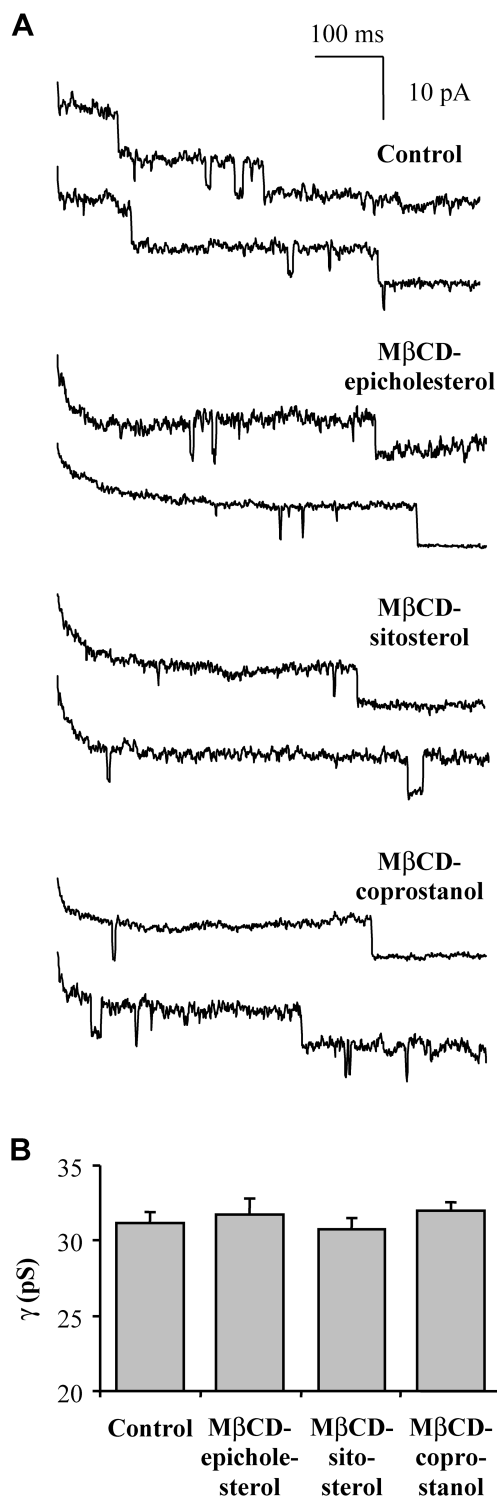


FIGURE 8. Substitution of cholesterol with its analogues does not affect unitary conductance of GTP γ S-induced VRAC. (A) Examples of single-channel currents recorded in the outside-out excised patch configuration after a depolarization step from -60 to $+140$ mV. (B) Unitary conductances of the channels recorded in the membranes of the cells substituted with cholesterol analogues and control cells ($n = 3-5$).

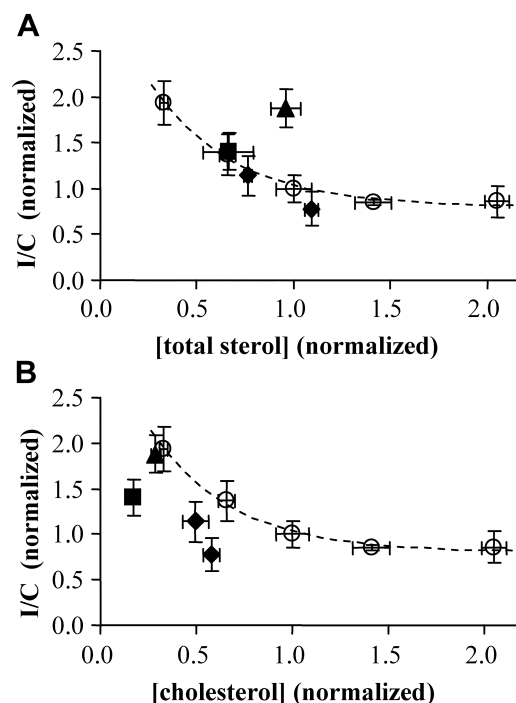


FIGURE 9. Functional dependence of GTP γ S-induced VRAC on the level of total sterol (A) and on the level of endogenous cholesterol (B) in sterol substitution experiments. (A) The mean peak current densities plotted as a function of total sterol level in cells treated with M β CD or M β CD saturated with cholesterol (\circ), in the cells treated with M β CD saturated with epicholesterol (\blacklozenge), in the cells treated with M β CD saturated with sitosterol (\blacksquare), and in the cells treated with M β CD saturated with coprostanol (\blacktriangle). All the values were normalized by their respective values in control cells. (B) The graph represents the same set of data as in A, plotted as a function of cellular cholesterol alone.

and therefore are expected to differ in direct binding to membrane proteins. In addition, cholesterol was substituted with β -sitosterol, which incorporates a structural modification at the opposite end of the cholesterol molecule than epicholesterol but, similarly to epicholesterol, is known to have an effect on membrane fluidity indistinguishable from that of cholesterol. Coprostanol, on the other hand, was chosen because its effect is similar to that of cholesterol depletion. Effects of these sterols on the physical properties of the membrane were measured both in simple reconstituted lipid systems (Xu and London, 2000) and in membrane vesicles isolated from epithelial cells HEK293 (Gimpl et al., 1997; Xu and London, 2000). The effects of the sterols on membrane fluidity in membrane vesicles are very similar to their effects in reconstituted lipid systems suggesting that these observations reflect general effects of the sterols on membrane properties. Our study shows that the effects of the three analogues on VRAC correlate closely to their effects on the physical properties of the membrane. Therefore, while it is not feasible to completely exclude the possibility that

the sterols regulate VRAC by directly binding to the channel because the molecular nature of VRAC is not yet identified, our current observations suggest that physical properties of the membrane play an important role in the regulation of VRAC activity.

What are the molecular mechanisms that may be responsible for the regulation of membrane proteins by the physical properties of the membrane? First, since the unitary conductance of VRAC is not affected, we can exclude the possibility that sterols affect VRAC pore properties. We also show that the effect of cholesterol depletion is not abolished at the saturating levels of GTP γ S, indicating that cholesterol does not affect the GTP γ S-dependent transition between the closed and the open states. If the effect is abolished, as we have demonstrated earlier for swelling-activated VRAC (Levitan et al., 2000), then it strongly suggests that it is not due to an increase in the number of the channels. If, however, the effect is not abolished at the saturating level of the stimulus, as is the case for GTP γ S-sensitive VRAC, it suggests that cholesterol affects the transition that is not dependent on GTP γ S and the simplest explanation is that cholesterol alters the distribution between the population of closed unavailable channels and the joint population of closed but available and open channels.

On a mechanistic level, one possibility is that cholesterol affects the distribution between different conformational states of the channels, as was proposed by the membrane deformation model. Specifically, the model suggests that changes in the lipid composition of the membrane that affect the structural stress of the membrane are expected to alter the energetic cost of the transition between the open and the closed states of the channels (Lundbaek and Andersen, 1994; Lundbaek et al., 1996). Indeed, sterols that increase the ordering of phospholipids (cholesterol, epicholesterol, and β -sitosterol) also inhibit the current, whereas cholesterol depletion that has a disordering effect on the membrane (Gidwani et al., 2001) as well as substitution of membrane cholesterol with an analogue, which does not increase ordering (Xu and London, 2000), facilitate channel activity. The correlation of the sterol effects on the transition between the nonavailable and the available channels with the change in bilayer physical properties suggests that this regulation involves a change in the cost of bilayer deformation. Another possible mechanism that may be responsible for the sensitivity of volume-regulated anion channels to cholesterol is segregation of the proteins into cholesterol-rich domains (lipid rafts). Organization of the lipid rafts is driven by lipid–lipid, protein–lipid, and protein–protein interactions (Lai, 2003), and these domains may serve as scaffolds for protein–protein interactions (Brown and London, 1998; Simons and Toomre, 2000). The two mechanisms are distinct but not mutu-

ally exclusive because segregation into a raft may affect channel function by altering its lipid environment.

We thank Drs. Frederick Sachs and Peter Davies for critical reading of this manuscript and for very helpful discussions.

This work was supported by the American Heart Association Scientist Development grant 0130254N (to I. Levitan), the AHA Postdoctoral fellowship 0225412U (to V.G. Romanenko), and the NIH grants HL22633 and HL63768 (to G. Rothblat), and HL64388-01A1 and PO1-HL-622-50 (to Dr. Peter Davies).

Olaf S. Andersen served as editor.

Submitted: 3 June 2003

Accepted: 4 December 2003

REFERENCES

- Barakat, A.I., E.V. Leaver, P.A. Pappone, and P.F. Davies. 1999. A flow-activated chloride-selective membrane current in vascular endothelial cells. *Circ. Res.* 85:820–828.
- Barrantes, F.J. 1993. Structural-functional correlates of the nicotinic acetylcholine receptor and its lipid microenvironment. *FASEB J.* 7:1460–1467.
- Bastiaanse, E.M., K.M. Hold, and A. Van der Laarse. 1997. The effect of membrane cholesterol content on ion transport processes in plasma membranes. *Cardiovasc. Res.* 33:272–283.
- Bers, D., C. Patton, and R. Nuccitelli. 1994. A practical guide to the preparation of Ca buffers. *Methods Cell Biol.* 40:3–29.
- Bligh, E.G., and W.J. Dyer. 1959. A rapid method of total lipid extraction and purification. *Can. J. Biochem. Physiol.* 37:911–917.
- Bolotina, V., V. Omelyanenko, B. Heyes, U. Ryan, and P. Bregetovski. 1989. Variations of membrane cholesterol alter the kinetics of Ca²⁺-dependent K⁺ channels and membrane fluidity in vascular smooth muscle cells. *Pflugers Arch.* 415:262–268.
- Brown, D.A., and E. London. 1998. Function of lipid rafts in biological membranes. *Annu. Rev. Cell Dev. Biol.* 14:111–136.
- Brulet, P., and H.M. McConnell. 1976. Lateral hapten mobility and immunochemistry of model membranes. *Proc. Natl. Acad. Sci. USA.* 73:2977–2981.
- Burger, K., G. Gimpl, and F. Fahrenholz. 2000. Regulation of receptor function by cholesterol. *Cell. Mol. Life Sci.* 57:1577–1592.
- Chang, H.M., R. Reistetter, R.P. Mason, and R. Gruener. 1995. Attenuation of channel kinetics and conductance by cholesterol: an interpretation using structural stress as a unifying concept. *J. Membr. Biol.* 143:51–63.
- Christian, A.E., M.P. Haynes, M.C. Phillips, and G.H. Rothblat. 1997. Use of cyclodextrins for manipulating cellular cholesterol content. *J. Lipid Res.* 38:2264–2272.
- Cooper, R.A. 1978. Influence of increased membrane cholesterol on membrane fluidity and cell function in human red blood cells. *J. Supramol. Struct.* 8:413–430.
- Demel, R.A., K.R. Bruckdorfer, and L.L.M. van Deenen. 1972. Structural requirements of sterols for the interaction with lecithin at the air-water interface. *Biochim. Biophys. Acta.* 255:311–320.
- Doroshenko, P., R. Penner, and E. Neher. 1991. A novel chloride conductance in the membrane of bovine chromaffin cells activated by intracellular GTP γ S. *J. Physiol.* 436:711–724.
- Estevez, A.Y., T. Bond, and K. Strange. 2001. Regulation of ICl_{swell} in neuroblastoma cells by G protein signaling pathways. *Am. J. Physiol. Cell Physiol.* 281:C89–C98.
- Evans, E., and D. Needham. 1987. Physical properties of surfactant bilayer membranes: thermal transition, elasticity, rigidity, cohesion and colloidal interactions. *J. Physiol. Chem.* 91:4219–4228.
- Gidwani, A., D. Holowka, and B. Baird. 2001. Fluorescence anisotropy measurements of lipid order in plasma membranes and

- lipid rafts from rbl-2h3 mast cells. *Biochemistry*. 40:12422–12429.
- Gimpl, G., K. Burger, and F. Fahrenholz. 1997. Cholesterol as modulator of receptor function. *Biochemistry*. 36:10959–10974.
- Hamill, O.P., A. Marty, E. Neher, B. Sakmann, and F.J. Sigworth. 1981. Improved patch-clamp techniques for high-resolution current recording from cells and cell-free membrane patches. *Pflugers Arch.* 391:85–100.
- Harder, T., R. Kellner, R.G. Parton, and J. Gruenberg. 1997. Specific release of membrane-bound annexin II and cortical cytoskeleton elements by sequestration of membrane cholesterol. *Mol. Biol. Cell.* 8:533–545.
- Huang, H.W. 1986. Deformation free energy of bilayer membrane and its effects on gramicidin channel lifetime. *Biophys. J.* 50:1061–1070.
- Ishikawa, T.T., J. MacGee, J.A. Morrison, and C.J. Glueck. 1974. Quantitative analysis of cholesterol in 5 to 20 μ L of plasma. *J. Lipid Res.* 15:286–291.
- Jackson, P.S., and K. Strange. 1995. Single-channel properties of a volume-sensitive anion conductance. Current activation occurs by abrupt switching of closed channels to an open state. *J. Gen. Physiol.* 105:643–660.
- Keller, S.L., S.M. Bezrukov, S.M. Gruner, M.W. Tate, I. Vodyanov, and V.A. Parsegian. 1993. Probability of alameticin conductance states varies with nonlamellar tendency of bilayer phospholipids. *Biophys. J.* 65:23–27.
- Klansek, J., P. Yancey, R.W. St. Clair, R.T. Fisher, W.J. Johnson, and J.M. Glick. 1995. Cholesterol quantification by GLC: artifactual formation of short-chain steryl esters. *J. Lipid Res.* 36:2261–2266.
- Klein, U., G. Gimple, and F. Fahrenholz. 1995. Alteration of the myometrial plasma membrane cholesterol with β -cyclodextrin modulates the binding affinity of the oxytocin receptor. *Biochemistry*. 34:13784–13793.
- Lai, E.C. 2003. Lipid rafts make for slippery platforms. *J. Cell Biol.* 162:365–370.
- Levitan, I., A.E. Christian, T.N. Tulenko, and G.H. Rothblat. 2000. Membrane cholesterol content modulates activation of volume-regulated anion current (VRAC) in bovine endothelial cells. *J. Gen. Physiol.* 115:405–416.
- Levitan, I., and S.S. Garber. 1998. Anion competition for a volume-regulated current. *Biophys. J.* 75:226–235.
- Lowry, O.H., N. Rosenbrough, A. Farr, and R. Randall. 1951. Protein measurements with folin phenol reagent. *J. Biol. Chem.* 193:265–275.
- Lundbaek, J.A., and O.S. Andersen. 1994. Lysophospholipids modulate channel function by altering the mechanical properties of lipid bilayers. *J. Gen. Physiol.* 104:645–673.
- Lundbaek, J.A., P. Birn, A.J. Hansen, and O.S. Andersen. 1996. Membrane stiffness and channel function. *Biochemistry*. 35:3825–3830.
- Lundbaek, J.A., A.M. Maer, and O.S. Andersen. 1997. Lipid bilayer electrostatic energy, curvature stress, and assembly of gramicidin channels. *Biochemistry*. 36:5695–5701.
- Manolopoulos, V.G., G. Droogmans, and B. Nilius. 1997. Hypotonicity and thrombin activate taurine efflux in BC3H1 and C2C12 myoblasts that is down regulated during differentiation. *Biochem. Biophys. Res. Commun.* 232:74–79.
- Manolopoulos, V.G., S. Liekens, P. Koolwijk, T. Voets, E. Peters, G. Droogmans, P.I. Lelkes, E. De Clercq, and B. Nilius. 2000. Inhibition of angiogenesis by blockers of volume-regulated anion channels. *Gen. Pharmacol.* 34:107–116.
- Markwell, M.A.K., S.M. Haas, L.L. Bieber, and N.E. Tolbert. 1978. A modification of the Lowry procedure to simplify protein determination in the membrane and lipoprotein samples. *Anal. Biochem.* 87:206–210.
- Mickus, D.E., D.G. Levitt, and S.D. Rychnovsky. 1992. Enantiomeric cholesterol as a probe for ion-channel structure. *J. Am. Chem. Soc.* 114:359–360.
- Mitter, D., C. Reisinger, B. Hinz, S. Hollmann, S.V. Yelamanchili, S. Treiber-Held, T.G. Ohm, A. Herrmann, and G. Ahnert-Hilger. 2003. The synaptophysin/synaptobrevin interaction critically depends on the cholesterol content. *J. Neurochem.* 84:35–42.
- Moore, W.J. 1972. Physical Chemistry. Prentice-Hall, Inc., Englewood Cliffs, NJ. 443 pp.
- Murari, R., M.P. Murari, and W.J. Baumann. 1986. Sterol orientations in phosphatidylcholine liposomes as determined by deuterium NMR. *Biochemistry*. 25:1062–1067.
- Needham, D., and R.S. Nunn. 1990. Elastic deformation and failure of lipid bilayer membranes containing cholesterol. *Biophys. J.* 58:997–1009.
- Nielsen, C., M. Goulian, and O.S. Andersen. 1998. Energetics of inclusion-induced bilayer deformations. *Biophys. J.* 74:1966–1983.
- Nilius, B., J. Eggermont, T. Voets, and G. Droogmans. 1996. Volume-activated Cl^- channels. *Gen. Pharmacol.* 27:1131–1140.
- Nilius, B., J. Prenen, T. Voets, and J. Eggermont. 1998. Activation of volume-regulated chloride currents by reduction of intracellular ionic strength in bovine endothelial cells. *J. Physiol.* 506:353–361.
- Nilius, B., T. Voets, J. Prenen, H. Barth, K. Aktories, K. Kaibuchi, G. Droogmans, and J. Eggermont. 1999. Role of Rho and Rho kinase in the activation of volume-regulated anion channels in bovine endothelial cells. *J. Physiol.* 516:67–74.
- Pang, L., M. Graziano, and S. Wang. 1999. Membrane cholesterol modulates galanin-GalR2 interaction. *Biochemistry*. 38:12003–12011.
- Perozo, E., A. Kloda, D.M. Cortes, and B. Martinac. 2002. Physical principles underlying the transduction of bilayer deformation forces during mechanosensitive channel gating. *Nat. Struct. Biol.* 9:696–703.
- Romanenko, V., P.F. Davies, and I. Levitan. 2002a. Dual effect of fluid shear stress on volume-regulated anion current in bovine aortic endothelial cells. *Am. J. Cell Physiol.* 282:C708–C718.
- Romanenko, V.G., G.H. Rothblat, and I. Levitan. 2002b. Modulation of endothelial inward rectifier K^+ current by optical isomers of cholesterol. *Biophys. J.* 83:3211–3222.
- Sabirov, R.Z., J. Prenen, T. Tomita, G. Droogmans, and B. Nilius. 2000. Reduction of ionic strength activates single volume-regulated anion channels (VRAC) in endothelial cells. *Pflugers Arch.* 439:315–320.
- Scanlon, S.M., D.C. Williams, and P. Schloss. 2001. Membrane cholesterol modulates serotonin transporter activity. *Biochemistry*. 40:10507–10513.
- Shen, M., G. Droogmans, J. Eggermont, T. Voets, J.C. Ellory, and B. Nilius. 2000. Differential expression of volume-regulated anion channels during cell cycle progression of human cervical cancer cells. *J. Physiol.* 529:385–394.
- Simons, K., and D. Toomre. 2000. Lipid rafts and signal transduction. *Nat. Rev. Mol. Cell Biol.* 1:31–39.
- Sooksaware, T., and M.A. Simmonds. 2001. Effects of membrane cholesterol on the sensitivity of the GABA_A receptor to GABA in acutely dissociated rat hippocampal neurones. *Neuropharmacology*. 40:178–184.
- Stockton, B.W., and I.C.P. Smith. 1976. A deuterium NMR study of the condensing effect of cholesterol on egg phosphatidylcholine bilayer membranes. *Chem. Phys. Lipids*. 17:251–263.
- Voets, T., G. Droogmans, G. Raskin, J. Eggermont, and B. Nilius. 1999. Reduced intracellular ionic strength as the initial trigger for activation of endothelial volume-regulated anion channels. *Proc. Natl. Acad. Sci. USA*. 96:5298–5303.
- Voets, T., L. Wei, P. De Smet, W. Van Driessche, J. Eggermont, G. Droogmans, and B. Nilius. 1997. Downregulation of volume-activated Cl^- currents during muscle differentiation. *Am. J. Physiol.* 272:C667–C674.
- Xu, X., and E. London. 2000. The effect of sterol structure on membrane lipid domains reveals how cholesterol can induce lipid domain formation. *Biochemistry*. 39:843–849.